

CLAREMONT BUSINESS PARK 2 FILING NO. 1
COUNTY OF EL PASO, STATE OF COLORADO
STREET IMPROVEMENT PLANS
(INCLUDING STORM SEWER)

OCTOBER 2020

AGENCIES:

OWNER/DEVELOPER: HAMMERS CONSTRUCTION, INC
1411 WOOLSEY HEIGHTS
COLORADO SPRINGS, CO 80915
(719) 570-1599

CIVIL ENGINEER: M & S CIVIL CONSULTANTS, INC.
102 E. PIKES PEAK, 5TH FLOOR
COLORADO SPRINGS, CO 80903
VIRGIL A. SANCHEZ P.E. (719) 955-5485

COUNTY ENGINEERING: EL PASO COUNTY PLANNING
AND COMMUNITY DEVELOPMENT
2880 INTERNATIONAL CIRCLE, SUITE 110
COLORADO SPRINGS, CO 80910
DANIEL TORRES P.E. (719) 520-6305

TRAFFIC ENGINEERING: EL PASO COUNTY DEPARTMENT OF PUBLIC WORKS
3275 AKERS DRIVE
COLORADO SPRINGS, CO 80922
JENNIFER IRVINE, P.E. (719) 520-6460

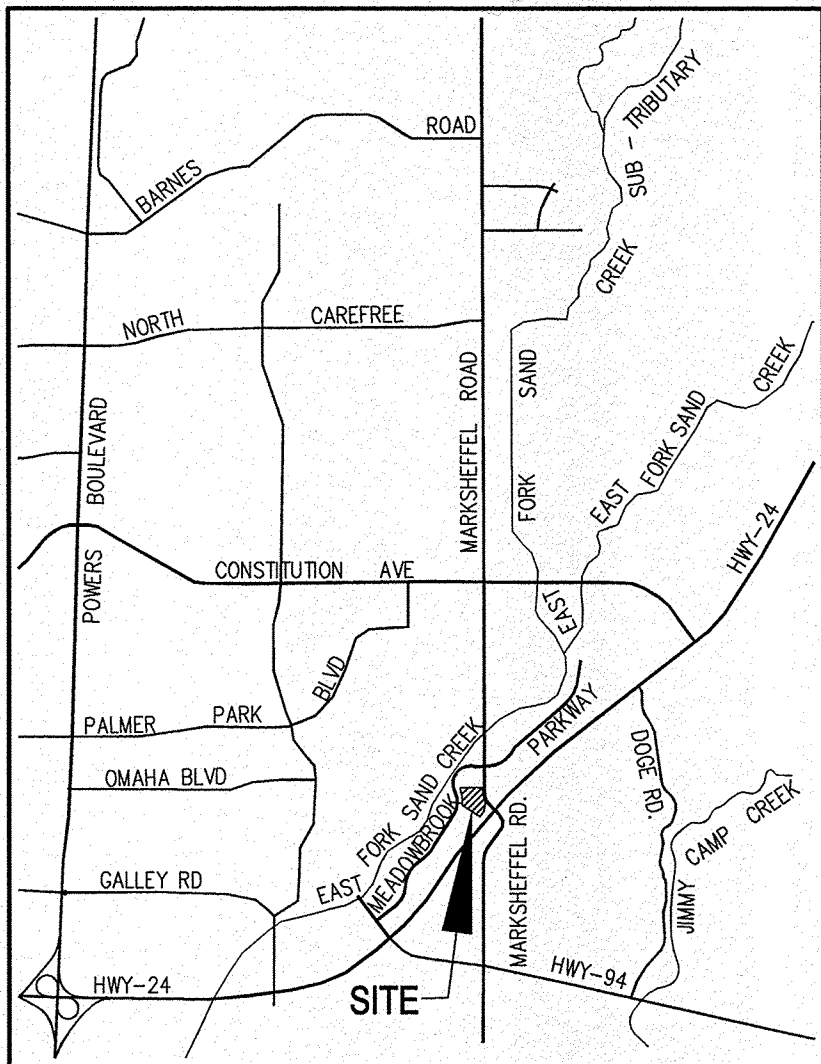
WATER RESOURCES: CHEROKEE METROPOLITAN DISTRICT
6250 PALMER PARK BOULEVARD
COLORADO SPRINGS, CO 80915-1721
JEFF MUNGER
(719) 597-5080

FIRE DISTRICT: CIMARRON HILLS FIRE DEPARTMENT
1835 TUSKEGEE PLACE
COLORADO SPRINGS, CO 80915
(719) 591-0960

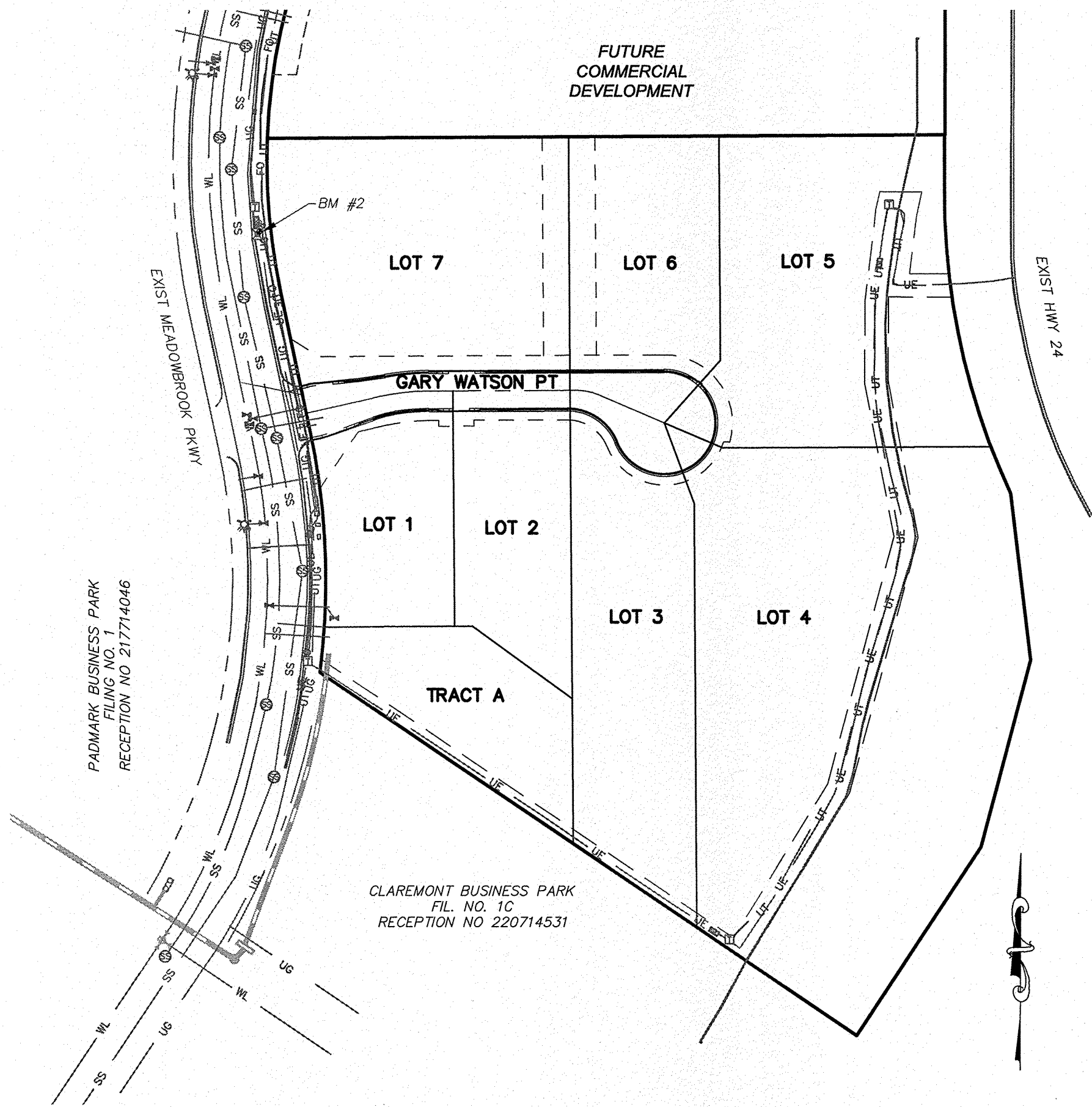
GAS DEPARTMENT: COLORADO SPRINGS UTILITIES
7710 DURANT DR.
COLORADO SPRINGS, CO 80947
TIM WENDT (719) 688-3556

ELECTRIC DEPARTMENT: MOUNTAIN VIEW ELECTRIC
11140 E. WOODMEN ROAD
FALCON, CO 80831
(719) 495-2283

COMMUNICATIONS: QWEST COMMUNICATIONS
(U.N.C.C. LOCATORS) (800) 922-1987
AT&T (LOCATORS) (719) 635-3674



VICINITY MAP
N.T.S.



SITE MAP
N.T.S.

BASIS OF BEARINGS

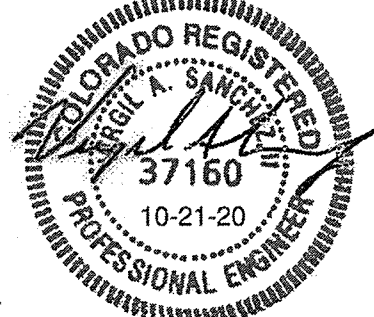
BASIS OF BEARINGS: THE CHORD OF THE WESTERLY LINE OF LOT 2, CLAREMONT BUSINESS PARK FILING NO. 1A" UNDER RECEPTION NO. 206712398, BEING MONUMENTED AT THE SOUTHERLY END WITH A NAIL AND WASHER, PLS NO ILLEGIBLE, AND AT THE NORTHERLY END WITH A REBAR AND ALUMINUM CAP PLS NO. 27605 IS ASSUMED TO BEAR N22°18'18"E, A DISTANCE OF 218.26 FEET.

BENCHMARKS

- BL33 BEING A BERNTSEN TOP SECURITY MONUMENT IN RANGE BOX 5" SOUTH OF SOUTH ROW FENCE OF HWY 24 UNDER CENTERLINE OF TRANSMISSION LINE. ELEVATION = 6455.17'
- CONTROL POINT 1, SET PK NAIL IN NE CORNER OF ELECTRIC TRANSFORMER PAD ELEVATION = 6372.26'

DESIGN ENGINEER'S STATEMENT

THESE DETAILED PLANS AND SPECIFICATIONS WERE PREPARED UNDER MY DIRECTION AND SUPERVISION. SAID PLANS AND SPECIFICATIONS HAVE BEEN PREPARED ACCORDING TO THE CRITERIA ESTABLISHED BY THE COUNTY FOR DETAILED ROADWAY, DRAINAGE, GRADING AND EROSION CONTROL PLANS AND SPECIFICATIONS, AND SAID PLANS AND SPECIFICATIONS ARE IN CONFORMITY WITH APPLICABLE MASTER DRAINAGE PLANS AND MASTER TRANSPORTATION PLANS. SAID PLANS AND SPECIFICATIONS MEET THE PURPOSES FOR WHICH THE PARTICULAR ROADWAY AND DRAINAGE FACILITIES ARE DESIGNED AND ARE CORRECT TO THE BEST OF MY KNOWLEDGE AND BELIEF. I ACCEPT RESPONSIBILITY FOR ANY LIABILITY CAUSED BY ANY NEGLIGENT ACTS, ERRORS OR OMISSIONS ON MY PART IN PREPARATION OF THESE DETAILED PLANS AND SPECIFICATIONS.



VIRGIL A. SANCHEZ, COLORADO P.E. #37160
FOR AND ON BEHALF OF M & S CIVIL CONSULTANTS, INC.

OWNER/DEVELOPER'S STATEMENT:

I, THE OWNER/DEVELOPER HAVE READ AND WILL COMPLY WITH THE REQUIREMENTS IN THESE DETAILED PLANS AND SPECIFICATIONS.

[Signature]
DATE: 1/18/2021
HAMMERS CONSTRUCTION, INC

ADDRESS: 1411 WOOLSEY HEIGHTS, COLORADO SPRINGS, CO 80915

EL PASO COUNTY:

COUNTY PLAN REVIEW IS PROVIDED ONLY FOR GENERAL CONFORMANCE WITH COUNTY DESIGN CRITERIA. THE COUNTY IS NOT RESPONSIBLE FOR THE ACCURACY AND ADEQUACY OF THE DESIGN, DIMENSIONS, AND/OR ELEVATIONS WHICH SHALL BE CONFIRMED AT THE JOB SITE. THE COUNTY THROUGH THE APPROVAL OF THIS DOCUMENT ASSUMES NO RESPONSIBILITY FOR COMPLETENESS AND/OR ACCURACY OF THIS DOCUMENT.

FILED IN ACCORDANCE WITH THE REQUIREMENTS OF THE EL PASO COUNTY LAND DEVELOPMENT CODE, DRAINAGE CRITERIA MANUAL, VOLUMES 1 AND 2, AND ENGINEERING CRITERIA MANUAL AS AMENDED.

IN ACCORDANCE WITH ECM SECTION 1.12, THESE CONSTRUCTION DOCUMENTS WILL BE VALID FOR CONSTRUCTION FOR A PERIOD OF 2 YEARS FROM THE DATE SIGNED BY THE EL PASO COUNTY ENGINEER. IF CONSTRUCTION HAS NOT STARTED WITHIN THOSE 2 YEARS, THE PLANS WILL NEED TO BE RESUBMITTED FOR APPROVAL, INCLUDING PAYMENT OF REVIEW FEES AT THE PLANNING AND COMMUNITY DEVELOPMENT DIRECTORS DISCRETION.

APPROVED
Engineering Department

JENNIFER IRVINE, P.E.
COUNTY ENGINEER / ECM ADMINISTRATOR

02/11/2021 7:51:15 AM
dsdnijkamp
EPC Planning & Community
Development Department

SHEET INDEX

SHEET	DESCRIPTION
SHEET 1	TITLE SHEET
SHEET 2	NOTE & DETAIL SHEET
SHEET 3	STREET IMPROVEMENT PLANS
SHEET 4	SIGNAGE AND STRIPING PLAN
SHEET 5	STORM SEWER NOTES
SHEET 6	STORM SEWER PLAN & PROFILE
SHEET 7	STORM SEWER PLAN & PROFILE
SHEET 8	WATER QUALITY POND 2 SITE PLAN
SHEET 9	OUTLET STRUCTURE POND 2 DETAILS
SHEET 10	WATER QUALITY POND 2 DETAILS & POND 1 TEMPORARY SEDIMENT POND
SHEET 11	STANDARD DETAILS
SHEET 12	STANDARD DETAILS

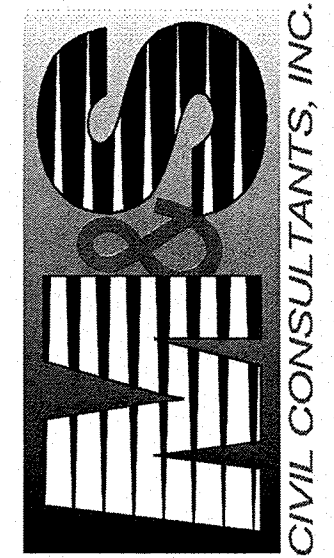
EL PASO COUNTY FILE NO. PCD # SF-20-014

CLAREMONT BUSINESS PARK 2 FILING NO. 1

STREET IMPROVEMENT PLANS

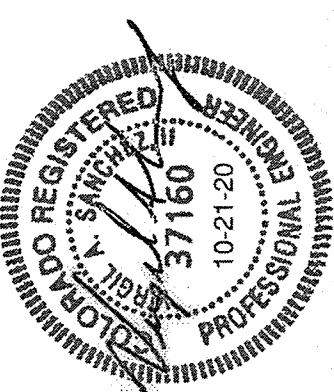
PROJECT NO. 44-037	SCALE: HORIZONTAL: N/A VERTICAL: N/A	DATE: 10/21/2020
DESIGNED BY: GW	DRAWN BY: CLP	CHECKED BY: WAS
SHEET 1 OF 12		S101

102 PIKES PEAK AVE, SUITE 500
COLORADO SPRINGS, CO 80903
PHONE: 719.955.5485



VIRGIL A. SANCHEZ, COLORADO P.E. NO. 37160

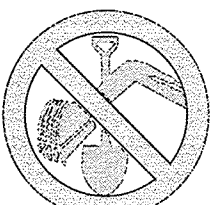
FOR AND ON
BEHALF OF
M & S CIVIL
CONSULTANTS,
INC.



REVISIONS: NO. DATE: BY: DESCRIPTION:

THE ENGINEER PREPARING THESE PLANS WILL NOT BE RESPONSIBLE OR LIABLE FOR UNAUTHORIZED CHANGES TO OR USES OF THESE PLANS. ALL CHANGES TO THE PLANS MUST BE IN WRITING AND MUST BE APPROVED BY THE PREPARER OF THESE PLANS.

CAUTION



FOR LOCATING
& MARKING
GAS,
ELECTRIC,
WATER &
TELEPHONE
LINES
FOR BURIED UTILITY INFORMATION
48 HRS BEFORE YOU DIG
CALL 1-800-922-1987

File: Q:\44037A-CBP F2-Lots 1-8.dwg\Const Dwg\STREET AND STORM\S02.dwg Plotstamp: 10/21/2020 10:49 AM

GENERAL CONSTRUCTION NOTES:

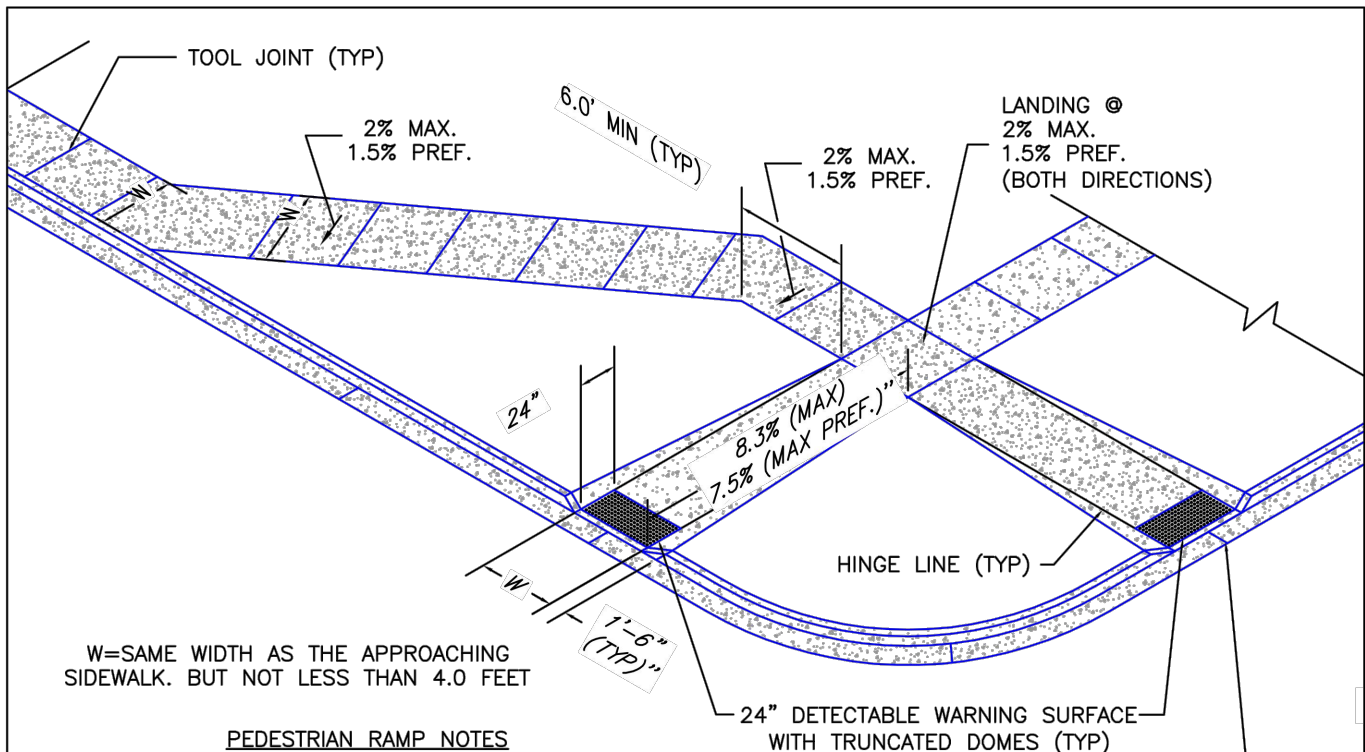
- IT SHALL BE THE RESPONSIBILITY OF THE CONTRACTOR TO VERIFY THE EXISTENCE AND LOCATION OF ALL UNDERGROUND UTILITIES ALONG THE ROUTE OF THE WORK. THE OMISSION FROM OR THE INCLUSION OF UTILITY LOCATIONS ON THE PLANS IS NOT TO BE CONSIDERED AS THE NONEXISTENCE OF OR A DEFINITE LOCATION OF EXISTING UNDERGROUND UTILITIES.
- THE CONTRACTOR WILL TAKE THE NECESSARY PRECAUTIONS TO PROTECT EXISTING UTILITIES FROM DAMAGE DUE TO THIS OPERATION. ANY DAMAGE TO THE UTILITIES WILL BE REPAIRED AT THE CONTRACTOR'S EXPENSE, AND ANY SERVICE DISRUPTION WILL BE SETTLED BY THE CONTRACTOR.
- ADDITIONAL EROSION CONTROL STRUCTURES MAY BE REQUIRED AT THE TIME OF CONSTRUCTION.
- ALL BACKFILL, SUB-BASE, AND/OR BASE COURSE (CLASS 6) MATERIAL SHALL BE COMPACTED PER THE SOILS ENGINEER'S RECOMMENDATIONS, AND APPROVED BY EL PASO COUNTY PCD.
- ALL STATIONING IS CENTERLINE OF IMPROVEMENTS UNLESS OTHERWISE INDICATED. ALL ELEVATIONS ARE FLOW LINE UNLESS OTHERWISE INDICATED AS TOP BACK OF CURB (TBC), ASPHALT (ASP), OR TOP OF INLET OR BOX (TOB).
- ALL DISTURBED PAVEMENT EDGES SHALL BE CUT TO NEAT LINES. REPAIR SHALL CONFORM TO EPC ECM APPENDIX K - 1.2C.
- ALL INTERSECTION ACCESSES TO BE CONSTRUCTED WITH A 25 FOOT SIGHT VISIBILITY TRIANGLES IS REQUIRED AND THERE SHALL BE NO OBSTRUCTIONS GREATER THAN 18" VERTICAL IN THIS AREA.
- ALL CULVERTS AND STORM DRAIN PIPES SHALL BE SMOOTH INTERIOR CORRUGATED POLYETHYLENE PIPE (HDPE), REINFORCED CONCRETE PIPE (RCP). ALL CULVERTS SHALL BE PLACED COMPLETE WITH FLARED END SECTIONS. ADEQUACY OF MATERIAL THICKNESS FOR ANY CSP INSTALLED SHALL BE VERIFIED BY OWNER'S GEOTECHNICAL ENGINEER TO SUPPORT MINIMUM 50 YEAR DESIGN LIFE. CULVERTS MUST CONFORM TO EPC ECM SECTION 3.32 - CULVERTS.
- ASPHALT THICKNESS AND BASE COURSE THICKNESS (COMPACTED) FOR ROADS SHALL BE PER DESIGN REPORT BY OWNER'S GEOTECHNICAL ENGINEER. OWNER'S GEOTECHNICAL ENGINEER TO BE ON SITE AT THE TIME OF ROAD CONSTRUCTION TO EVALUATE SOIL CONDITIONS AND DETERMINE IF ADDITIONAL MEASURES ARE NECESSARY TO ASSURE STABILITY OF THE NEW ROADS. PAVEMENT DESIGN SHALL BE APPROVED BY EL PASO COUNTY PCD PRIOR TO CONSTRUCTION.

SIGNING AND STRIPING NOTES:

- ALL SIGNS AND PAVEMENT MARKINGS SHALL BE IN COMPLIANCE WITH THE CURRENT MANUAL ON UNIFORM TRAFFIC CONTROL DEVICES (MUTCD).
- REMOVAL OF EXISTING PAVEMENT MARKINGS SHALL BE ACCOMPLISHED BY A METHOD THAT DOES NOT MATERIALLY DAMAGE THE PAVEMENT. THE PAVEMENT MARKINGS SHALL BE REMOVED TO THE EXTENT THAT THEY WILL NOT BE VISIBLE UNDER DAY OR NIGHT CONDITIONS. AT NO TIME WILL IT BE ACCEPTABLE TO PAINT OVER EXISTING PAVEMENT MARKINGS.
- ANY DEVIATION FROM THE STRIPING AND SIGNING PLAN SHALL BE APPROVED BY EL PASO COUNTY PCD.
- ALL SIGNS SHOWN ON THE SIGNING AND STRIPING PLAN SHALL BE NEW SIGNS. EXISTING SIGNS MAY REMAIN OR BE REUSED IF THEY MEET CURRENT EL PASO COUNTY AND MUTCD STANDARDS.
- STREET NAME AND REGULATORY STOP SIGNS SHALL BE ON THE SAME POST AT INTERSECTIONS.
- ALL REMOVED SIGNS SHALL BE DISPOSED OF IN A PROPER MANNER BY THE CONTRACTOR.
- ALL STREET NAME SIGNS SHALL HAVE "D" SERIES LETTERS, WITH LOCAL ROADWAY SIGNS BEING 4" UPPER-LOWER CASE LETTERING ON 8" BLANK AND NON-LOCAL ROADWAY SIGNS BEING 6" LETTERING, UPPER-LOWER CASE ON 12" BLANK, WITH A WHITE BORDER THAT IS NOT RECESSED. MULTI-LANE ROADWAYS WITH SPEED LIMITS OF 40 MPH OR HIGHER SHALL HAVE 8" UPPER-LOWER CASE LETTERING ON 18" BLANK WITH A WHITE BORDER THAT IS NOT RECESSED. THE WIDTH OF THE NON-RECESSED WHITE BORDERS SHALL MATCH PAGE 255 OF THE 2012 MUTCD "STANDARD HIGHWAY SIGNS"
- ALL TRAFFIC SIGNS SHALL HAVE A MINIMUM HIGH INTENSITY PRISMATIC GRADE SHEETING.
- ALL LOCAL RESIDENTIAL STREET SIGNS SHALL BE MOUNTED ON A 1.75" X 1.75" SQUARE TUBE SIGN POST AND STUB POST BASE. FOR OTHER APPLICATIONS, REFER TO THE CDOT STANDARD S-614-8 REGARDING USE OF THE P2 TUBULAR STEEL POST SLIPBASE DESIGN.
- ALL SIGNS SHALL BE SINGLE SHEET ALUMINUM WITH 0.100" MINIMUM THICKNESS.
- ALL LIMIT LINES/STOP LINES, CROSSWALK LINES, PAVEMENT LEGENDS, AND ARROWS SHALL BE A MINIMUM 125 MIL THICKNESS PREFORMED THERMOPLASTIC PAVEMENT MARKINGS WITH TAPERED EDGES PER CDOT STANDARD S-627-1. WORD AND SYMBOL MARKINGS SHALL BE THE NARROW TYPE. STOP BARS SHALL BE 24" IN WIDTH. CROSSWALKS LINES SHALL BE 12" WIDE AND 8' LONG PER CDOT S-627-1.
- ALL LONGITUDINAL LINES SHALL BE A MINIMUM 15MIL THICKNESS EPOXY PAINT. ALL NON-LOCAL RESIDENTIAL ROADWAYS SHALL INCLUDE BOTH RIGHT AND LEFT EDGE LINE STRIPING AND ANY ADDITIONAL STRIPING AS REQUIRED BY CDOT S-627-1.
- THE CONTRACTOR SHALL NOTIFY EL PASO COUNTY PLANNING AND COMMUNITY DEVELOPMENT (719) 520-6819 PRIOR TO AND UPON COMPLETION OF SIGNING AND STRIPING.
- THE CONTRACTOR SHALL OBTAIN A WORK IN THE RIGHT OF WAY PERMIT FROM THE EL PASO COUNTY DPW PRIOR TO ANY SIGNAGE OR STRIPING WORK WITHIN AN EXISTING EL PASO COUNTY ROADWAY.

STANDARD NOTES FOR EL PASO COUNTY CONSTRUCTION PLANS

- ALL DRAINAGE AND ROADWAY CONSTRUCTION SHALL MEET THE STANDARDS AND SPECIFICATIONS OF THE CITY OF COLORADO SPRINGS/EL PASO COUNTY DRAINAGE CRITERIA MANUAL, VOLUMES 1 AND 2, AND THE EL PASO COUNTY ENGINEERING CRITERIA MANUAL.
- CONTRACTOR SHALL BE RESPONSIBLE FOR THE NOTIFICATION AND FIELD NOTIFICATION OF ALL EXISTING UTILITIES, WHETHER SHOWN ON THE PLANS OR NOT, BEFORE BEGINNING CONSTRUCTION. LOCATION OF EXISTING UTILITIES SHALL BE VERIFIED BY THE CONTRACTOR PRIOR TO CONSTRUCTION. CALL 811 TO CONTACT THE UTILITY NOTIFICATION CENTER OF COLORADO (UNCC).
- CONTRACTOR SHALL KEEP A COPY OF THESE APPROVED PLANS, THE GRADING AND EROSION CONTROL PLAN, THE STORMWATER MANAGEMENT PLAN (SWMP), THE SOILS AND GEOTECHNICAL REPORT, AND THE APPROPRIATE DESIGN AND CONSTRUCTION STANDARDS AND SPECIFICATIONS AT ALL TIMES, INCLUDING THE FOLLOWING:
 - EL PASO COUNTY ENGINEERING CRITERIA MANUAL (ECM)
 - CITY OF COLORADO SPRINGS/EL PASO COUNTY DRAINAGE CRITERIA MANUAL, VOLUMES 1 AND 2
 - COLORADO DEPARTMENT OF TRANSPORTATION (CDOT) STANDARD SPECIFICATIONS FOR ROAD AND BRIDGE CONSTRUCTION
 - CDOT M & S STANDARDS
- NOTWITHSTANDING ANYTHING DEPICTED IN THESE PLANS IN WORDS OR GRAPHIC REPRESENTATION, ALL DESIGN AND CONSTRUCTION RELATED TO ROADS, STORM DRAINAGE AND EROSION CONTROL SHALL CONFORM TO THE STANDARDS AND REQUIREMENTS OF THE MOST RECENT VERSION OF THE RELEVANT ADOPTED EL PASO COUNTY STANDARDS, INCLUDING THE LAND DEVELOPMENT CODE, THE ENGINEERING CRITERIA MANUAL, THE DRAINAGE CRITERIA MANUAL, AND THE DRAINAGE CRITERIA MANUAL VOLUME 2. ANY DEVIATIONS FROM REGULATIONS AND STANDARDS MUST BE REQUESTED, AND APPROVED, IN WRITING. ANY MODIFICATIONS NECESSARY TO MEET CRITERIA AFTER-THE-FACT WILL BE ENTIRELY THE DEVELOPER'S RESPONSIBILITY TO RECTIFY.
- IT IS THE DESIGN ENGINEER'S RESPONSIBILITY TO ACCURATELY SHOW EXISTING CONDITIONS, BOTH ONSITE AND OFFSITE, ON THE CONSTRUCTION PLANS. ANY MODIFICATIONS NECESSARY DUE TO CONFLICTS, OMISSIONS, OR CHANGED CONDITIONS WILL BE ENTIRELY THE DEVELOPER'S RESPONSIBILITY TO RECTIFY.
- CONTRACTOR SHALL SCHEDULE A PRE-CONSTRUCTION MEETING WITH EL PASO COUNTY PCD - INSPECTIONS, PRIOR TO STARTING CONSTRUCTION.
- IT IS THE CONTRACTOR'S RESPONSIBILITY TO UNDERSTAND THE REQUIREMENTS OF ALL JURISDICTIONAL AGENCIES AND TO OBTAIN ALL REQUIRED PERMITS, INCLUDING BUT NOT LIMITED TO EL PASO COUNTY EROSION AND STORMWATER QUALITY CONTROL PERMIT (ESQCP), REGIONAL BUILDING FLOODPLAIN DEVELOPMENT PERMIT, U.S. ARMY CORPS OF ENGINEERS-ISSUED 401 AND/OR 404 PERMITS, AND COUNTY AND STATE FUGITIVE DUST PERMITS.
- CONTRACTOR SHALL NOT DEVIATE FROM THE PLANS WITHOUT FIRST OBTAINING WRITTEN APPROVAL FROM THE DESIGN ENGINEER AND PCD. CONTRACTOR SHALL NOTIFY THE DESIGN ENGINEER IMMEDIATELY UPON DISCOVERY OF ANY ERRORS OR INCONSISTENCIES.
- ALL STORM DRAIN PIPE SHALL BE CLASS III RCP UNLESS OTHERWISE NOTED AND APPROVED BY PCD.
- CONTRACTOR SHALL COORDINATE GEOTECHNICAL TESTING PER ECM STANDARDS. PAVEMENT DESIGN SHALL BE APPROVED BY EL PASO COUNTY PCD PRIOR TO PLACEMENT OF CURB AND GUTTER AND PAVEMENT.
- ALL CONSTRUCTION TRAFFIC MUST ENTER/EXIT THE SITE AT APPROVED CONSTRUCTION ACCESS POINTS.
- SIGHT VISIBILITY TRIANGLES AS IDENTIFIED IN THE PLANS SHALL BE PROVIDED AT ALL INTERSECTIONS. OBSTRUCTIONS GREATER THAN 18 INCHES ABOVE FLOWLINE ARE NOT ALLOWED WITHIN SIGHT TRIANGLES.
- SIGNING AND STRIPING SHALL COMPLY WITH EL PASO COUNTY DPW AND MUTCD CRITERIA. [IF APPLICABLE, ADDITIONAL SIGNING AND STRIPING NOTES WILL BE PROVIDED.]
- CONTRACTOR SHALL OBTAIN ANY PERMITS REQUIRED BY EL PASO COUNTY DPW, INCLUDING WORK WITHIN THE RIGHT-OF-WAY AND SPECIAL TRANSPORT PERMITS.
- THE LIMITS OF CONSTRUCTION SHALL REMAIN WITHIN THE PROPERTY LINE UNLESS OTHERWISE NOTED. THE OWNER/DEVELOPER SHALL OBTAIN WRITTEN PERMISSION AND EASEMENTS, WHERE REQUIRED, FROM ADJOINING PROPERTY OWNER(S) PRIOR TO ANY OFF-SITE DISTURBANCE, GRADING, OR CONSTRUCTION.

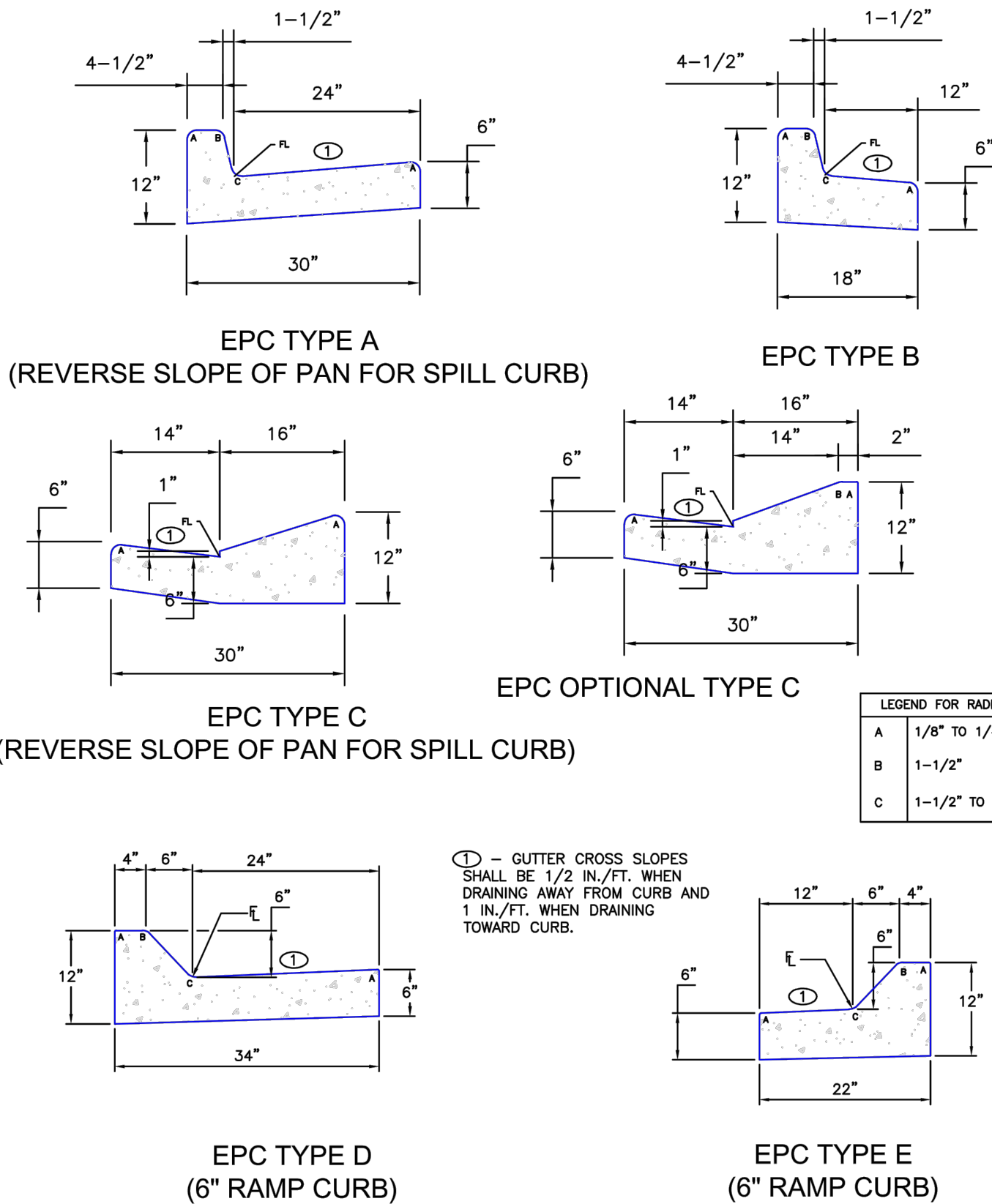


PEDESTRIAN RAMP NOTES		
1. ALL WORK SHALL BE DONE IN ACCORDANCE WITH THE CURRENT ENGINEERING CRITERIA MANUAL AND ADA REQUIREMENTS.		
2. CONTRACTOR TO NOTIFY ENGINEERING DIVISION INSPECTION STAFF 48 HOURS PRIOR TO CONCRETE PLACEMENT.		
3. PEDESTRIAN CURB RAMP CONSTRUCTION SHALL BE A MINIMUM 4,500 PSI CONCRETE, MINIMUM 4" THICK, NON-COLORED, NON-SCORED, COARSE BROOM FINISH.		
4. PEDESTRIAN CURB RAMP LOCATION AND LENGTH MAY REQUIRE MODIFICATION TO MAINTAIN THE 8.3% MAXIMUM RUNNING RAMP SLOPE DUE TO STREET INTERSECTION GRADES AND/OR ALIGNMENTS. SEE ECM SECTION 6.3.6 FOR PEDESTRIAN PUSHBUTTON LOCATION REQUIREMENTS.		
5. DETECTABLE WARNING SURFACE SHALL START A MINIMUM OF 6" BUT NOT MORE THAN 8" FROM THE FLOWLINE OF THE CURB AT ANY POINT.		
6. DETECTABLE WARNING SURFACE SHALL BE PREFABRICATED, CAST IRON (OPTIMA NATURAL FINISH) AND IN ACCORDANCE WITH ECM CHAPTER 8 AND SD.2-42. THERMOPLASTIC TRUNCATED DOMES AND PAVERS WILL NOT BE ACCEPTED.		
7. THE DETECTABLE WARNING SURFACE SHALL BE 24" IN LENGTH AND THE FULL WIDTH OF THE RAMP.		
8. PEDESTRIAN CURB RAMP WIDTH REQUIRED IS SAME AS APPROACHING SIDEWALK; 4' MINIMUM.		
9. ALL PEDESTRIAN CURB RAMP SHALL BE PERPENDICULAR TO TRAFFIC WITH THE EXCEPTION OF MID-BLOCK OR TERMINAL RAMP WHICH MAY BE PARALLEL SUBJECT TO APPROVAL.		
10. DRAINAGE STRUCTURES, TRAFFIC SIGNAL/SIGNAGE, UTILITIES/JUNCTION BOXES, OR OTHER OBSTRUCTIONS WITHIN PROPOSED PEDESTRIAN CURB RAMP AREAS AND LANDINGS ARE PROHIBITED.		
11. THE COUNTER SLOPE OF THE GUTTER OR ROAD AT THE FOOT OF A RAMP SHALL NOT EXCEED 5%.		

6/23/20	Pedestrian Curb Ramp Detail	
DATE APPROVED:	Standard Drawing	
Jennifer E. Irvine	REVISION DATE: 6/23/20	FILE NAME: SD_2-41
DEPARTMENT OF PUBLIC WORKS		

GENERAL NOTES

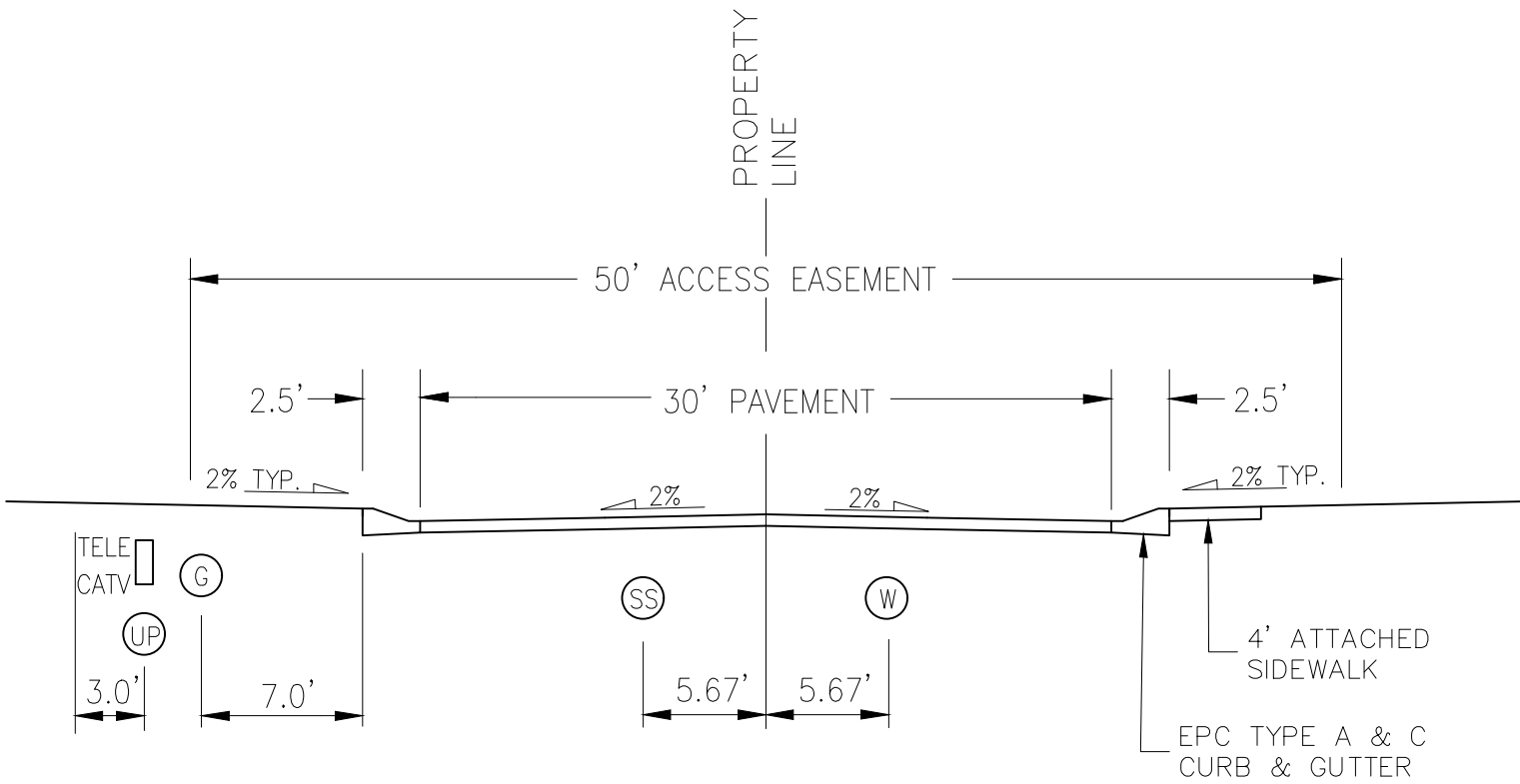
- WHERE THE 1'-6" FLARED SIDE(S) OF A PERPENDICULAR CURB RAMP IS (ARE) CONTIGUOUS WITH A PEDESTRIAN OR HARD SURFACE AREA (PEDESTRIAN CIRCULATION PATH), THE MAXIMUM FLARE SLOPE SHALL NOT EXCEED 10:1
- PEDESTRIAN WALKWAY (PEDESTRIAN ACCESS ROUTE) AND/OR LOCATION OF EXISTING OR FUTURE PEDESTRIAN RAMP ON OPPOSITE CORNERS SHALL BE REVIEWED BEFORE CONSTRUCTING NEW RAMP.
- AT MARKED PEDESTRIAN CROSSINGS, THE BOTTOM OF THE RAMPS, EXCLUSIVE OF THE FLARE SIDES, SHALL BE TOTALLY CONTAINED WITHIN THE MARKINGS.



SCALE: NOT TO SCALE

TYPICAL CURB AND GUTTER DETAIL (SD 2-20C)

SCALE: NTS



URBAN LOCAL CROSS SECTION (PRIVATE)

SCALE: NTS

POSTED SPEED 25 MPH

DESIGN SPEED 35 MPH



FOR LOCATING & MARKING GAS, ELECTRIC, WATER & TELEPHONE LINES

FOR BURIED UTILITY INFORMATION

48 HRS BEFORE YOU DIG

CALL 1-800-922-1987

EPC 2/11/21

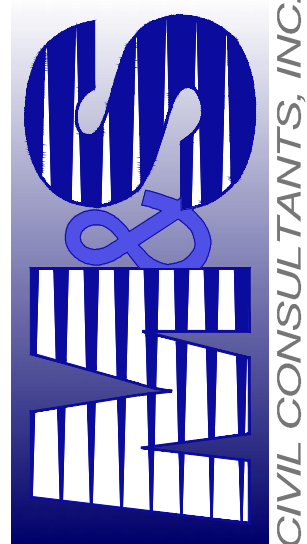
EL PASO COUNTY FILE NO. PCD # SF-20-014

CLAREMONT BUSINESS PARK 2 FILING NO. 1

NOTE & DETAIL SHEET

PROJECT NO. 44-037	FILE: Yang\Const Dwg\Street Plans\S02.dwg	SCALE	SHEET 2 OF 12	S102
DESIGNED BY: GW	DATE: 10/21/2020	HORIZ: N/A		
DRAWN BY: CLP		VERT: N/A		
CHECKED BY: VAS				

102 E. Pikes Peak Ave., Suite 500
Colorado Springs, CO 80903
PHONE: 719.555.485



CIVIL CONSULTANTS, INC.

MICHEL A. SANCHEZ, COLORADO P.E. NO. 37160

FOR AND ON BEHALF OF M&S CIVIL CONSULTANTS, INC.

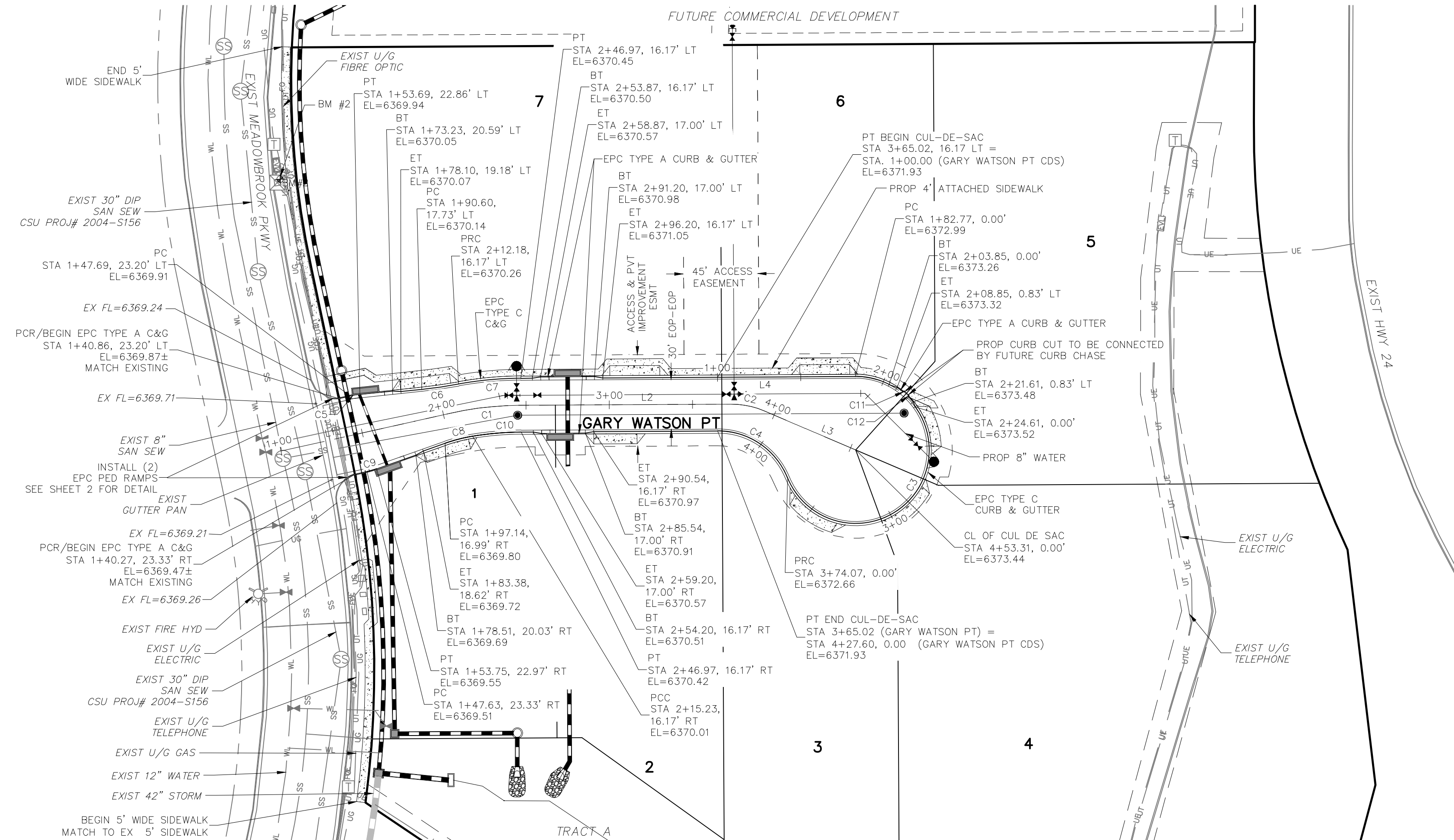


REVISIONS: NO. DATE: BY: DESCRIPTION:

THE ENGINEER PREPARED THESE PLANS WILL NOT BE RESPONSIBLE OR LIABLE FOR UNAUTHORIZED CHANGES TO OR USES OF THESE PLANS. ALL CHANGES TO THE PLANS MUST BE IN WRITING AND MUST BE APPROVED BY THE PREPARER OF THESE PLANS.

CAUTION

File: Q:\44037A-CBP F2-Lots 1-8\44037A-CBP F2-Lots 1-8.dwg Const Dwg\STREET AND STORM\S03.dwg Plotstamp: 10/21/2020 10:58 AM



**GARY WATSON PT
(PRIVATE)**

ABBREVIATION LEGEND

C-C CENTERLINE INTERSECTION
F-F FLOWLINE INTERSECTION
BT BEGIN TRANSITION
ET END TRANSITION
PC POINT OF CURVE
PCC POINT OF COMPOUND CURVE
PCR POINT OF CURB RETURN
PRC POINT OF REVERSE CURVE
PT POINT OF TANGENT
EL ELEVATION
LT LEFT
RT RIGHT

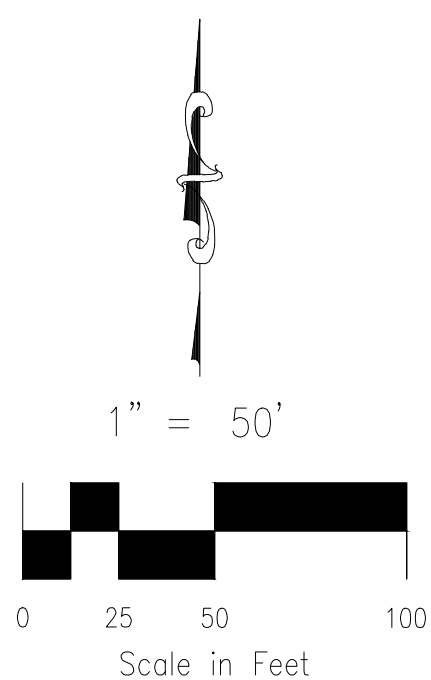
CENTERLINE LINE TABLE		
LINE	LENGTH	DIRECTION
L1	104.00'	N77°22'44"E
L2	125.98'	N89°41'23"E
L3	59.87'	S66°49'29"E

CENTERLINE CURVE TABLE			
CURVE	RADIUS	LENGTH	DELTA
C1	200.00'	42.97'	12°18'39"
C2	50.00'	20.50'	23°29'08"

CURB FLOWLINE LINE TABLE		
LINE	LENGTH	DIRECTION
L4	82.77'	N89°41'23"E

CURB FLOWLINE CURVE TABLE			
CURVE	RADIUS	LENGTH	DELTA
C3	44.17'	191.30'	248°09'48"
C4	45.00'	53.54'	68°09'48"

CURB FLOWLINE CURVE TABLE			
CURVE	RADIUS	LENGTH	DELTA
C5	52.00'	6.01'	6.62°
C6	298.83'	22.31'	4.28°
C7	216.17'	37.60'	9.97°
C8	98.83'	17.21'	9.98°
C9	52.00'	6.13'	6.76°
C10	183.83'	29.17'	9.09°
C11	1.00'	1.52'	86.88°
C12	1.00'	1.52'	86.88°



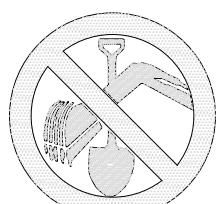
LEFT FLOWLINE

RIGHT FLOWLINE

CUL-DE-SAC STA 1+00.00 TO STA 4+27.60

EL PASO COUNTY FILE NO. PCD # SF-20-014

EPC 2/11/21



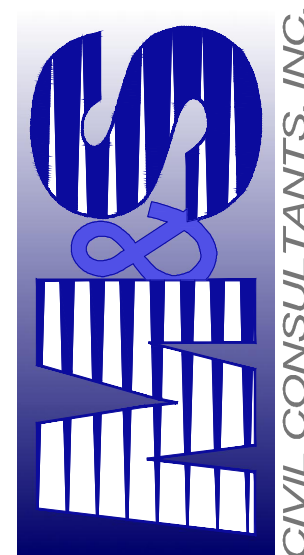
FOR LOCATING
& MARKING
GAS,
ELECTRIC,
WATER &
TELEPHONE
LINES
FOR BURIED UTILITY INFORMATION
48 HRS BEFORE YOU DIG
CALL 1-800-922-1987

CLAREMONT BUSINESS PARK 2 FILING NO. 1

STREET IMPROVEMENT PLANS

PROJECT NO. 44-037
FILE: Yang\Const Dwg\Street & Storm Plans\S03.dwg
DATE: 10/21/2020
DESIGNED BY: GW
DRAWN BY: CLP
CHECKED BY: VAS
SCALE: 1"=50'
SHEET 3 OF 12
SIO3

102 E. PIKES PEAK AVE. SUITE 500
COLORADO SPRINGS, CO 80903
PHONE: 719.555.5485



FOR AND ON
BEHALF OF
M&S CIVIL
CONSULTANTS,
INC.

VIRGIL A. SANCHEZ, COLORADO P.E. NO. 37160



REVISIONS:
NO. DATE BY DESCRIPTION APPROVED BY DATE

THE ENGINEER PREPARING THESE PLANS WILL NOT BE RESPONSIBLE FOR UNAUTHORIZED CHANGES TO OR
USES OF THESE PLANS. ALL CHANGES TO THE PLANS MUST BE IN WRITING AND MUST BE APPROVED BY THE PREPARER
OF THESE PLANS.

CAUTION

EX MEADOWBROOK PRVY

R1-1 (30" x 30")

MEADOWBROOK PARKWAY

GARY WATSON PT

D-3 (4" FONT)

0 OUTLET
W14-2

LOT 7

LOT 6

LOT 5

GARY WATSON PT

LOT 1

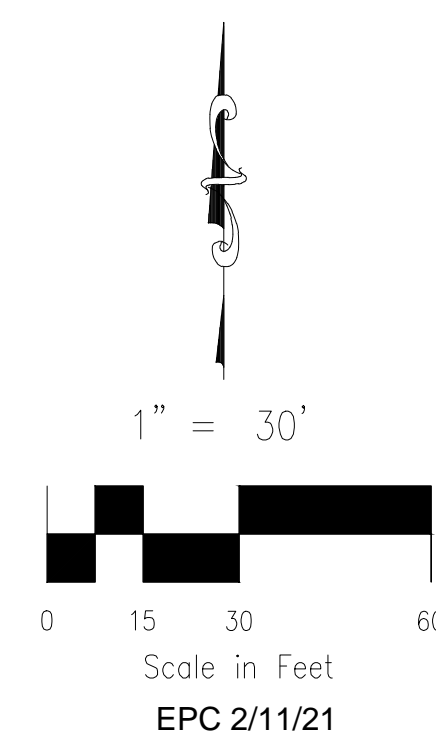
LOT 2

LOT 3

LOT 4

TRACT A

EX HMY 24



EL PASO COUNTY FILE NO. PCD # SF-20-01

VIRGIL A. SANCHEZ, COLORADO P.E. NO. 37160

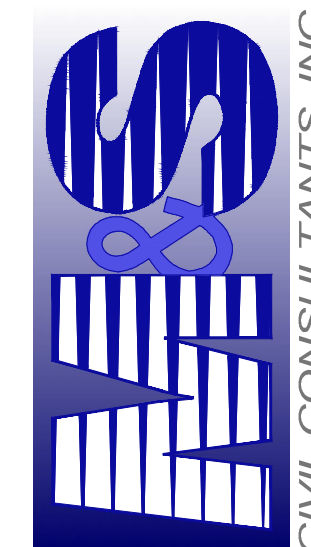
FOR AND ON
BEHALF OF
M&S CIVIL
CONSULTANTS,
INC.



THE ENGINEER PREPARING THESE PLANS WILL NOT BE RESPONSIBLE, OR LIABLE FOR, UNAUTHORIZED CHANGES TO OR USES OF THESE PLANS. ALL CHANGES TO THE PLANS MUST BE IN WRITING AND MUST BE APPROVED BY THE PREPARER OF THESE PLANS.

CAUTION

1102 E. PIKES PEAK AVE, SUITE 500
COLORADO SPRINGS, CO 80903
PHONE: 719.955.5485



CIVIL CONSULTANTS, INC.


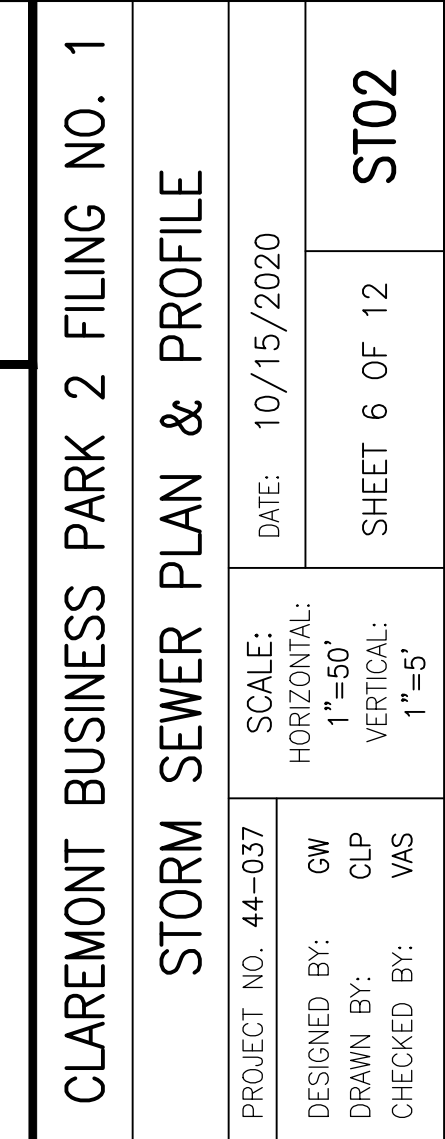
CLAREMONT BUSINESS PARK 2 FILING NO. 1

SIGNAGE AND STRIPING PLAN

PROJECT NO. 44-037	SCALE:	DATE: 10/21/2020
--------------------	--------	------------------

DESIGNED BY: GW	HORIZONTAL:	
	N/A	

SHEET 4 OF 12 S104



A. SANCHEZ, COLORADO P.E. NO. 37160

THE ENGINEER PREPARING THESE PLANS WILL NOT BE RESPONSIBLE, OR LIABLE FOR, UNAUTHORIZED CHANGES TO OR USES OF THESE PLANS. ALL CHANGES TO THE PLANS MUST BE IN WRITING AND MUST BE APPROVED BY THE PREPARER OF THESE PLANS.

[illegible]

PROPOSED GRADE
 Ⓢ STORM SEWER

EXISTING GRADE
 Ⓢ STORM SEWER

5.88 LF -
 24" ADS
 Ⓢ 0.50%
 Q100=18.3 CFS

100-YR
 WSEL 6367.38

100 YEAR HGL

193.46 LF - 24" ADS Ⓢ 0.50%
 Q100=18.3 CFS

35.33 LF -
 24" ADS
 Ⓢ 1.50%
 Q100=9.1 CFS

INSTALL LOW
 TAILWATER
 RIPRAP BASIN
 FIG. 9-37
 SEE SHEET
 ST06

STA. 1+00.00
 INSTALL 24" ES
 INV. = 6364.45

STA. 1+06.13
 BEGIN 24" ADS
 INV. = 6364.48

STA. 1+17.00
 BEGIN 24" ADS
 INV. = 6364.48

STA. 1+20.00
 20' 24" ADS HORIZ. BEND
 INV. = 6364.51

STA. 3+06.97
 STM INLET 2'
 15" D=108 INLET
 INV. (24")=6365.77 (E)
 INV. OUT(24")=6365.47 (E)

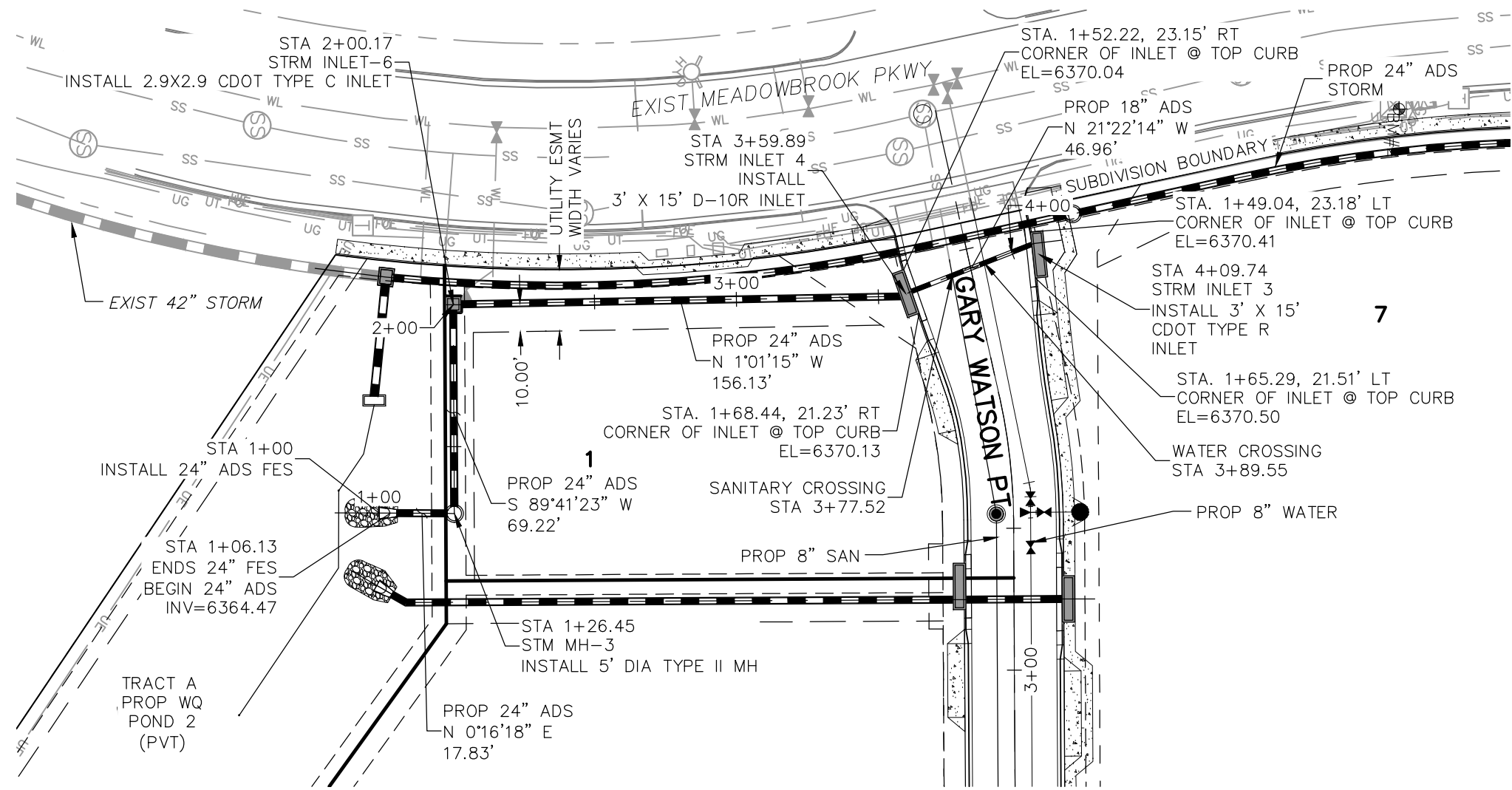
STA. 3+29.13
 8" SANITARY CROSSING
 BOP (STM)=6365.78
 BOP (S)=6360.57
 CLR=5.20'

STA. 3+32.13
 8" WATER CROSSING
 BOP (STM)=6365.96
 BOP (S)=6363.17
 CLR=2.79'

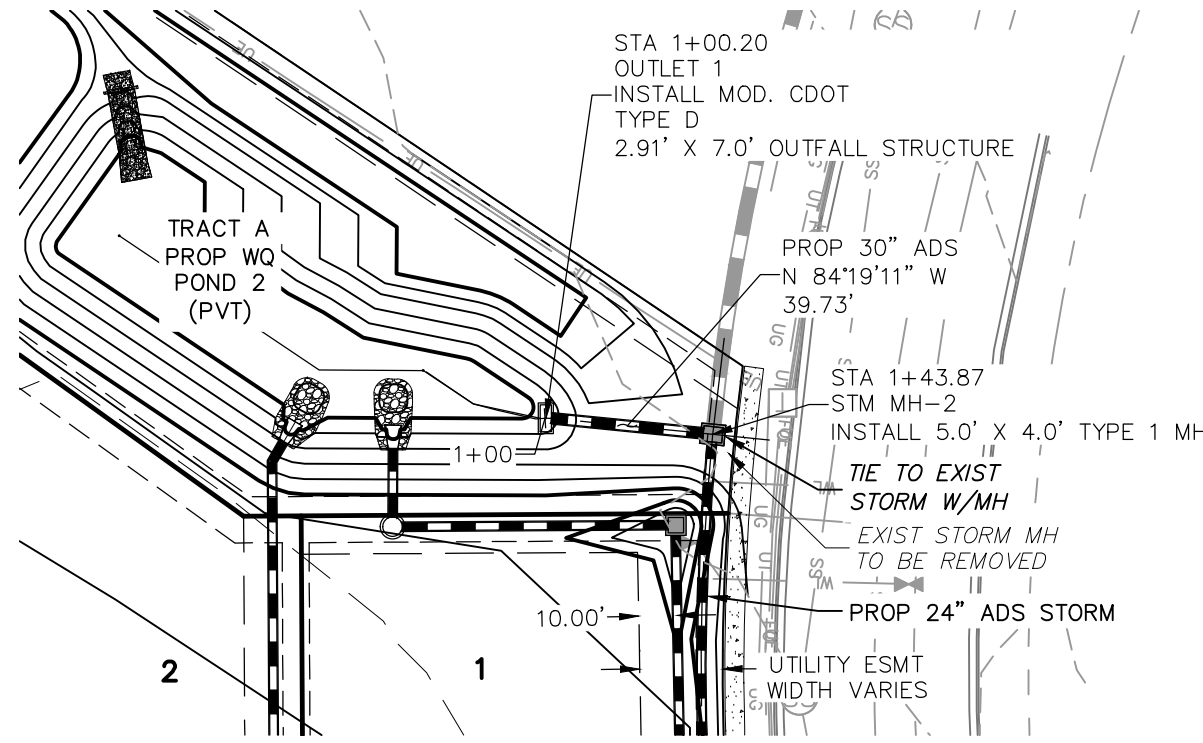
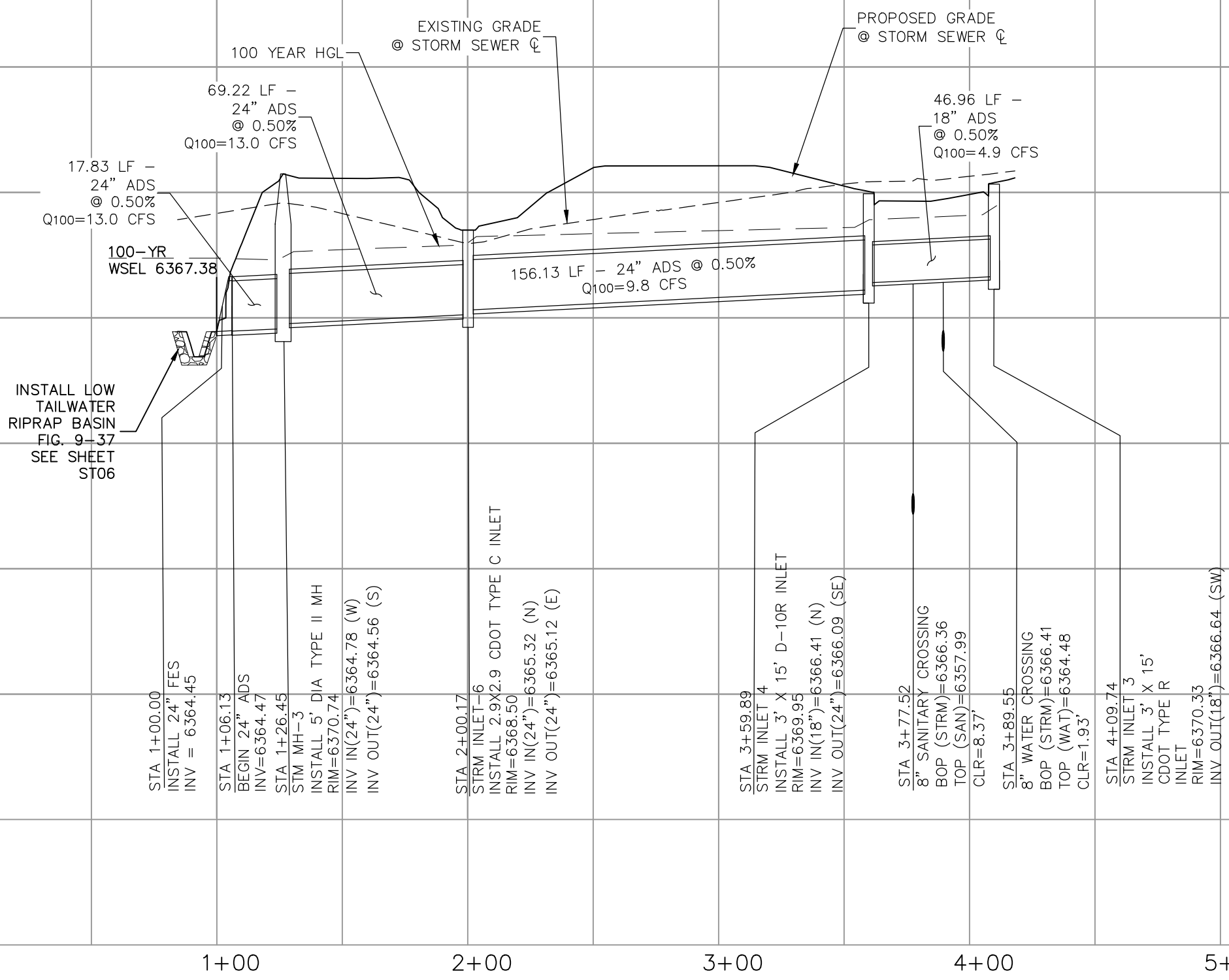
STA. 3+45.30
 INSTALL 3' x 15"
 INLET TYPE A
 INV. OUT(24")=6366.30 (S)

NO	DATE:
----	-------

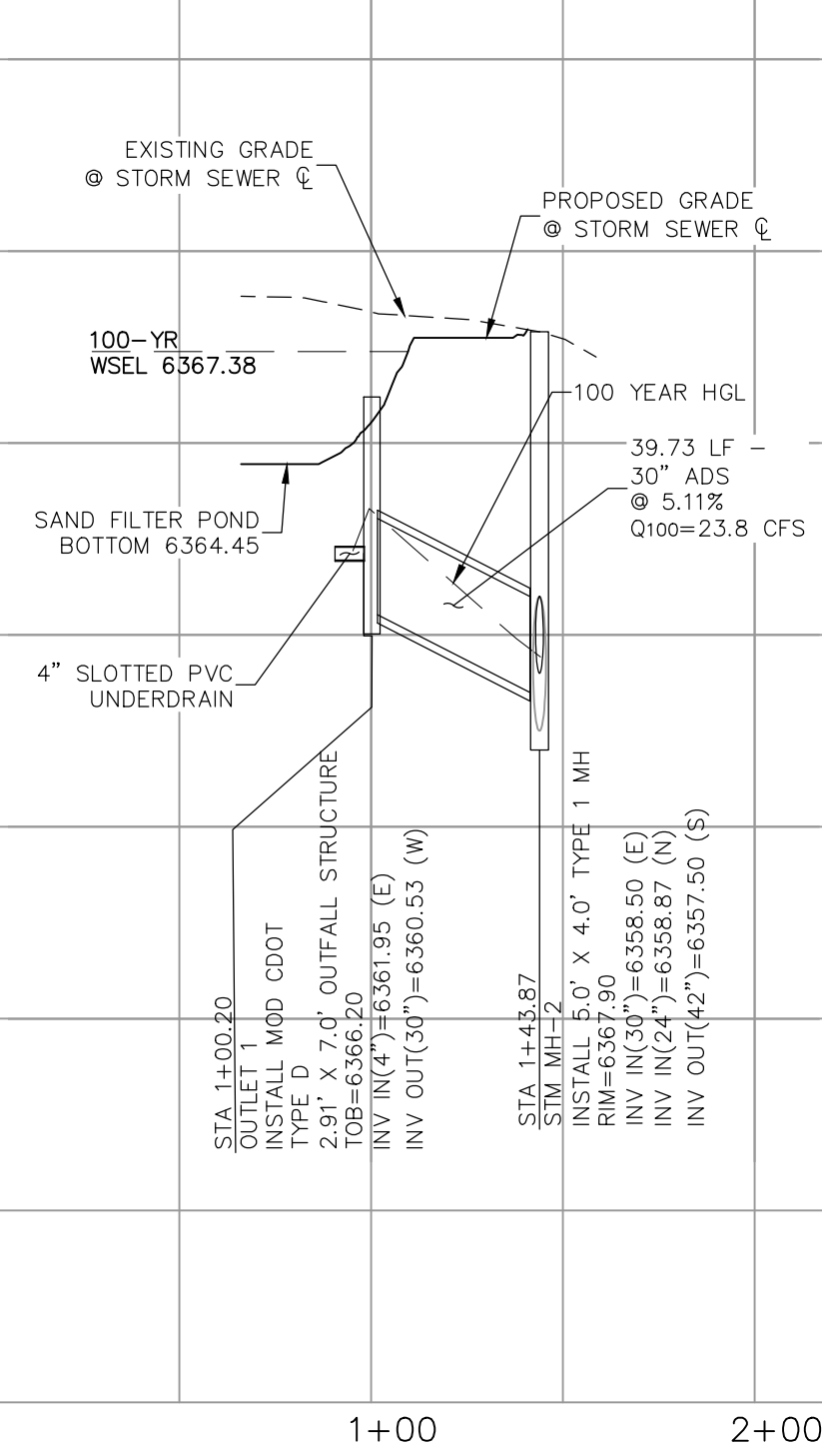
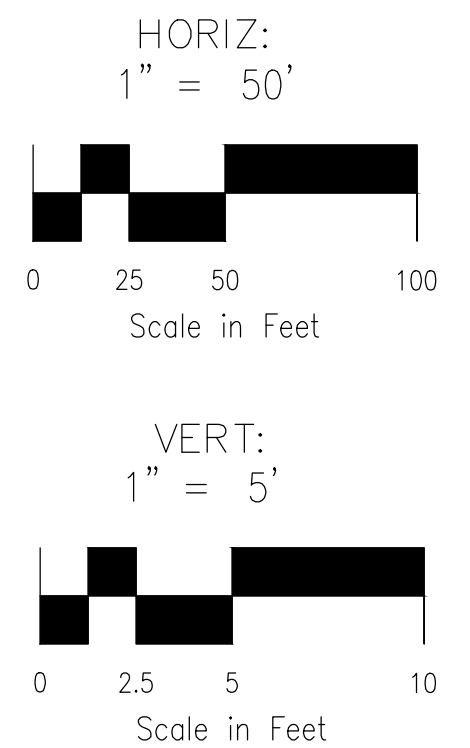




STORM 10
STA 1+00.00 TO STA 4+07.61
(PRIVATE)



STORM 11
STA 1+00.00 TO STA 1+43.87
(PRIVATE)

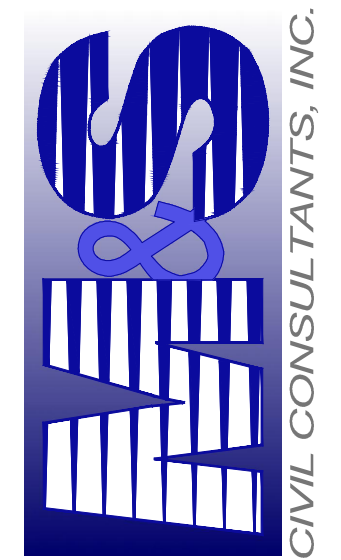


CLAREMONT BUSINESS PARK 2 FILING NO. 1

STORM SEWER PLAN AND PROFILE

T NO. 44-037 ID BY: GW BY: CLP BY: WAS	SCALE: HORIZONTAL: 1"=60' VERTICAL: 1"=5'	DATE: 10/15/2020 SHEET 7 OF 12 ST03
---	---	--

102 E. PIKES PEAK AVE., STE 500
COLORADO SPRINGS, CO 80903
PHONE: 719.955.5485



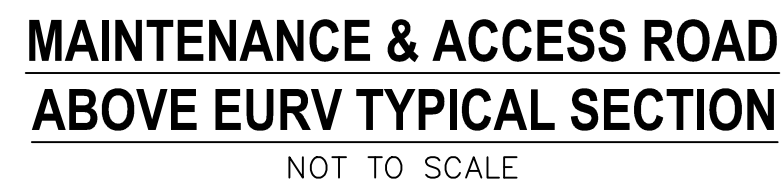
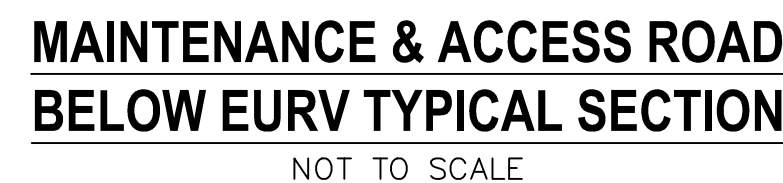
FOR AND ON
BEHALF OF
M&S CIVIL
CONSULTANTS,
INC.



VIRGIL A. SANCHEZ, COLORADO P.E. NO. 37160

[illegible]

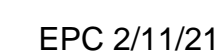
CAUTION THE ENGINEER PREPARING THESE PLANS WILL NOT BE RESPONSIBLE, OR LIABLE FOR, UNAUTHORIZED CHANGES TO OR USES OF THESE PLANS. ALL CHANGES TO THE PLANS MUST BE IN WRITING AND MUST BE APPROVED BY THE PREPARER OF THESE PLANS.

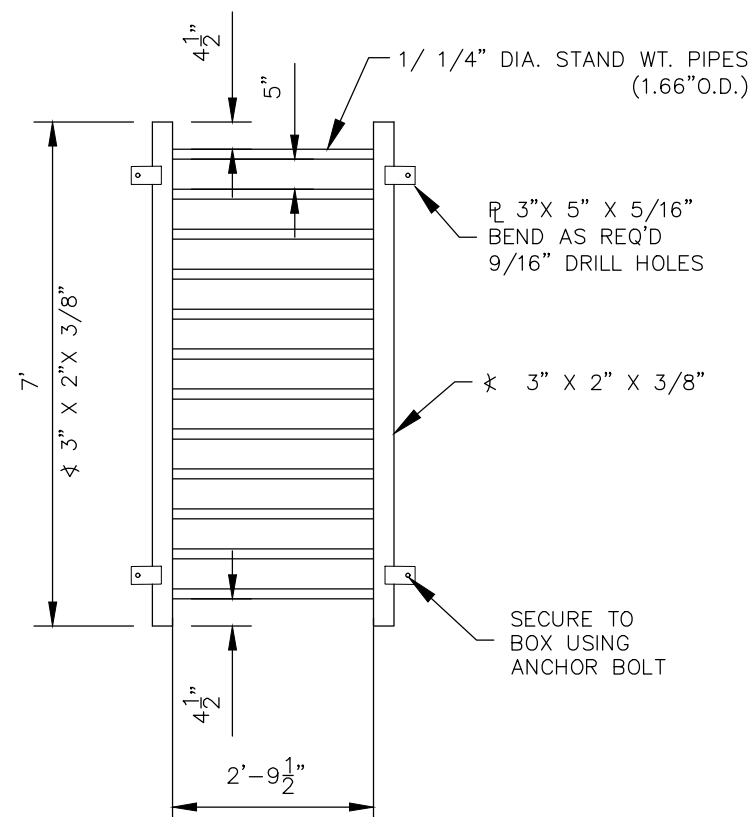
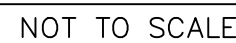


GRADING NOTES:

1. ALL PROPOSED CONTOURS ARE TO FINISHED GRADE.
2. EARTHEN CUT AND FILL SLOPES SHALL BE 3:1. MAXIMUM SLOPES IN EXCESS OF 4:1 SHALL BE COVERED WITH SOIL. MINIMUM SOIL COVER SHALL BE 4" MIN. THICKNESS OF TOPSOIL AND SEEDED.
3. IF THE PROJECT IS CONSTRUCTED DURING THE SUMMER WHEN SEEDING IS NOT ALLOWED, APPLY 1-1/2 TONS OF CERTIFIED WEED FREE MULCH PER ACRE TO TEMPORARILY GROWTH RETARD WEEDS. SOIL IN COMBINATION WITH AN ORGANIC MULCH TACKIFIER.
4. PRIOR TO ANY CONSTRUCTION ACTIVITIES THE PROPOSED SILT FENCE SHOWN ON THE EROSION CONTROL SHEET SHALL BE CONSTRUCTED. THE FENCE SHALL BE REMOVED AFTER THE EROSION CONTROL STABILIZATION OF THE SITE OR COMPLETION OF CONSTRUCTION.
5. TO REDUCE THE POTENTIAL FOR CLOGGING OF DEBRIS GRATES, NO STRAW MULCH SHALL BE USED WITHIN THE EIRV OR WOVC OF A DETENTION BASIN. INSTEAD, EROSION CONTROL BLANKETS SHALL BE INSTALLED FOR A WIDTH OF AT LEAST 6 FEET ON EITHER SIDE OF CONCRETE LOW-FLOW CHANNELS. THE BLANKETS SHALL COMPLY WITH THE EROSION CONTROL AND INSTALLATION REQUIREMENTS FOR EROSION CONTROL BLANKETS (STRAW COCONUT OR 100 PERCENT COCONUT). SITE-SPECIFIC CONDITIONS MAY REQUIRE ADDITIONAL BLANKET OR OTHER EROSION CONTROL MEASURES.

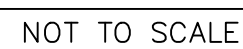
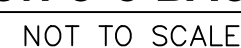
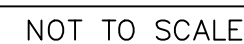
- GRADING NOTES:**
1. ALL PROPOSED CONTOURS ARE TO FINISHED GRADE.
 2. EARTHEN CUT AND FILL SLOPES SHALL BE 3:1. MAXIMUM SLOPES IN EXCESS OF 4:1 SHALL BE COVERED WITH SOIL. MINIMUM SOIL COVER SHALL BE 4" MIN. THICKNESS OF TOPSOIL AND SEEDED.
 3. IF THE PROJECT IS CONSTRUCTED DURING THE SUMMER WHEN SEEDING IS NOT ALLOWED, APPLY 1-1/2 TONS OF CERTIFIED WEED FREE MULCH PER ACRE TO TEMPORARILY GROWTH RETARD WEEDS. SOIL IN COMBINATION WITH AN ORGANIC MULCH TACKIFIER.
 4. PRIOR TO ANY CONSTRUCTION ACTIVITIES THE PROPOSED SILT FENCE SHOWN ON THE EROSION CONTROL SHEET SHALL BE CONSTRUCTED. THE FENCE SHALL BE REMOVED AFTER THE EROSION CONTROL STABILIZATION OF THE SITE OR COMPLETION OF CONSTRUCTION.
 5. TO REDUCE THE POTENTIAL FOR CLOGGING OF DEBRIS GRATES, NO STRAW MULCH SHALL BE USED WITHIN THE EIRV OR WOVC OF A DETENTION BASIN. INSTEAD, EROSION CONTROL BLANKETS SHALL BE INSTALLED FOR A WIDTH OF AT LEAST 6 FEET ON EITHER SIDE OF CONCRETE LOW-FLOW CHANNELS. THE BLANKETS SHALL COMPLY WITH THE EROSION CONTROL AND INSTALLATION REQUIREMENTS FOR EROSION CONTROL BLANKETS (STRAW COCONUT OR 100 PERCENT COCONUT). SITE-SPECIFIC CONDITIONS MAY REQUIRE ADDITIONAL BLANKET OR OTHER EROSION CONTROL MEASURES.





NOT TO SCALE

ALL GRATE
DIMENSIONS TO BE
FIELD VERIFIED
PRIOR TO
FABRICATION. ALL
GRATE MATERIAL
SHALL BE
GALVANIZED.

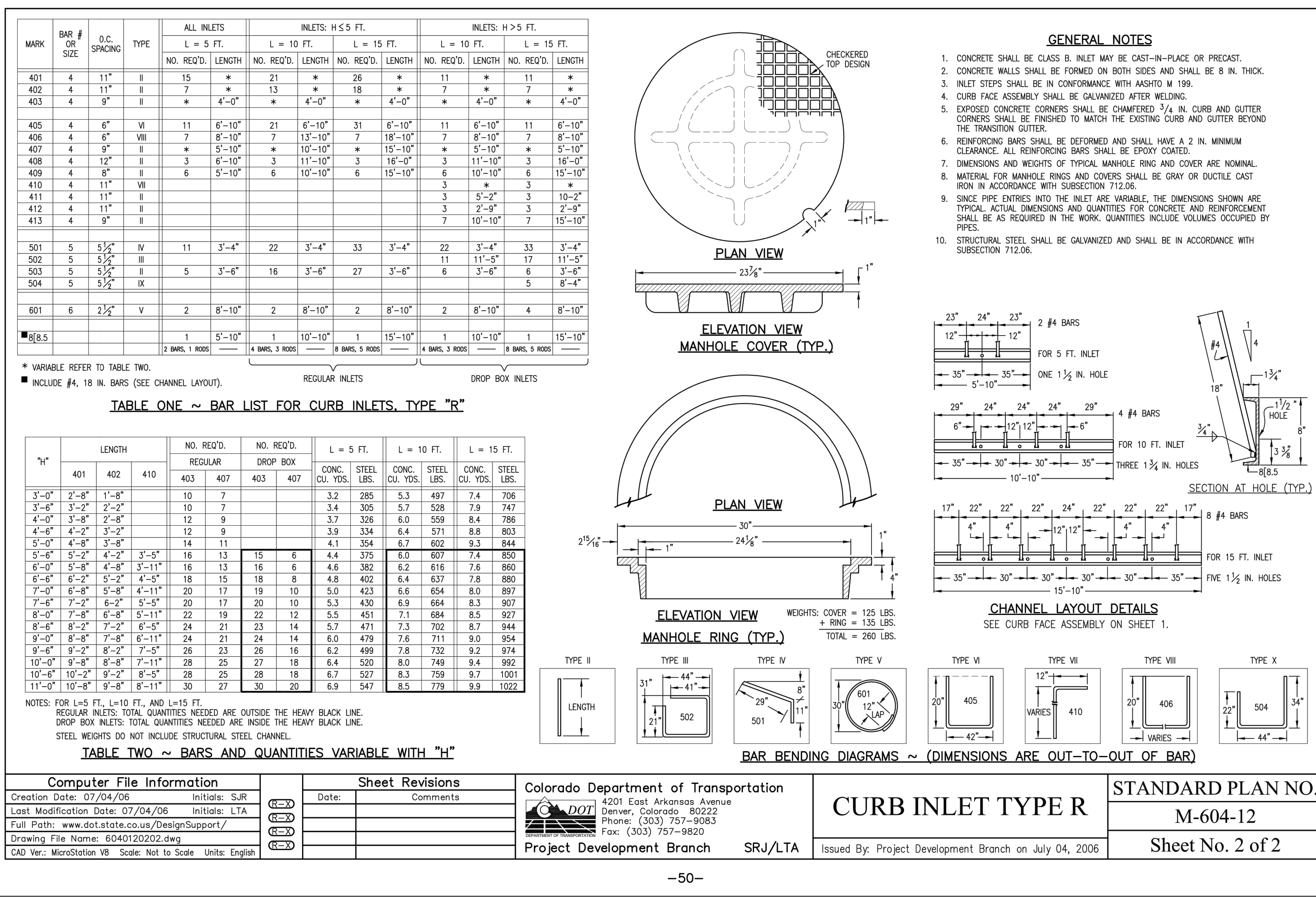
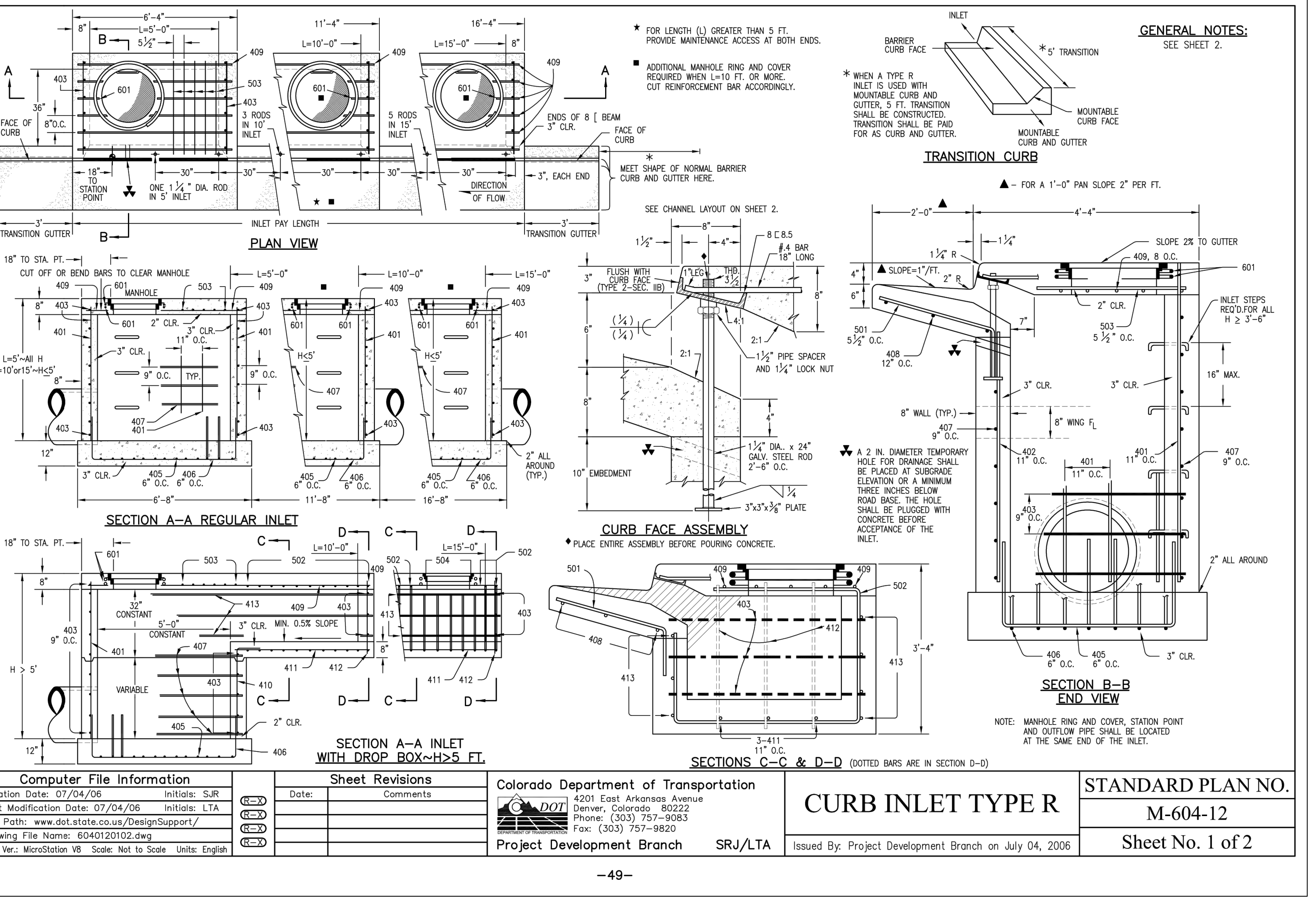
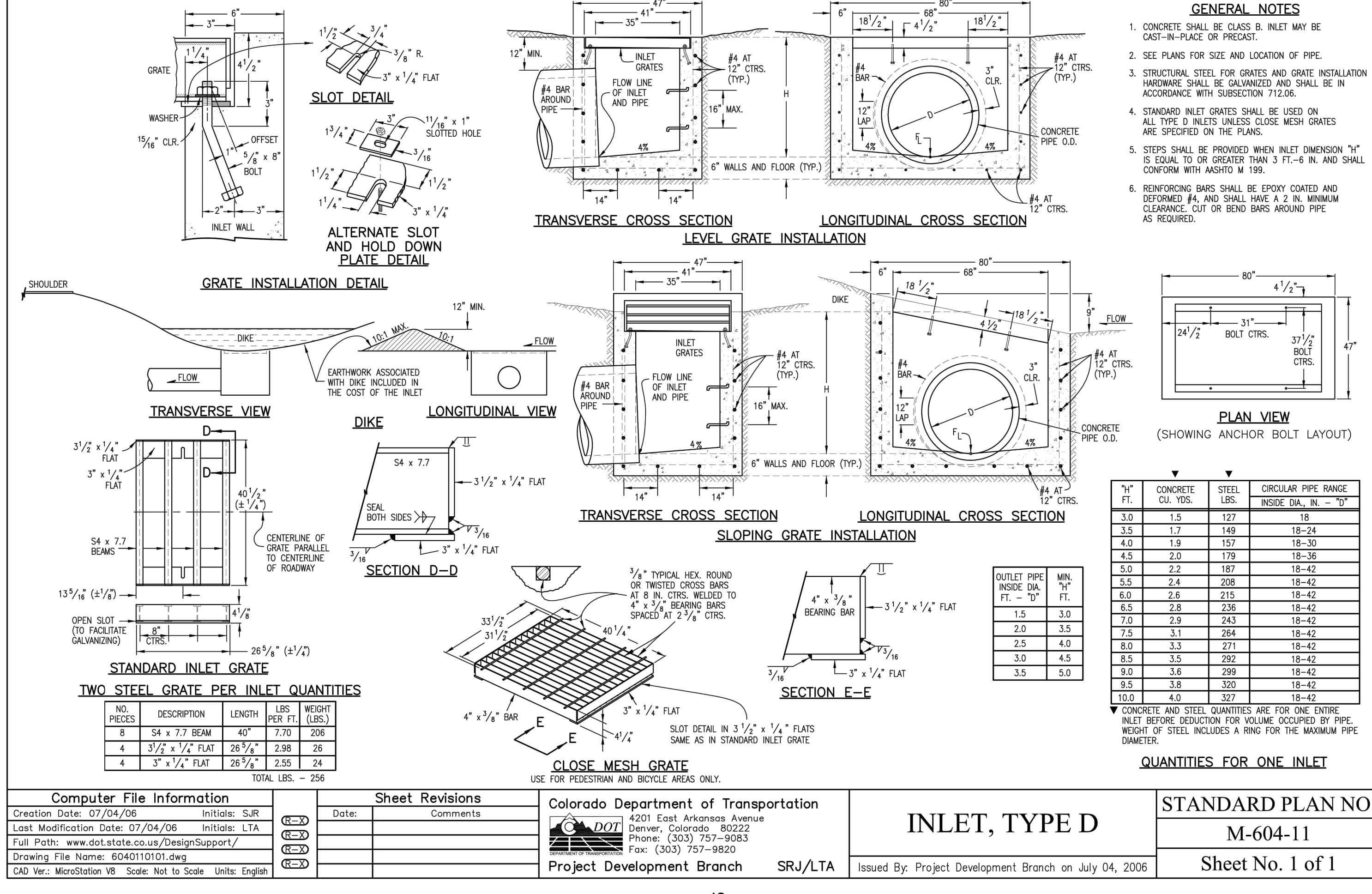
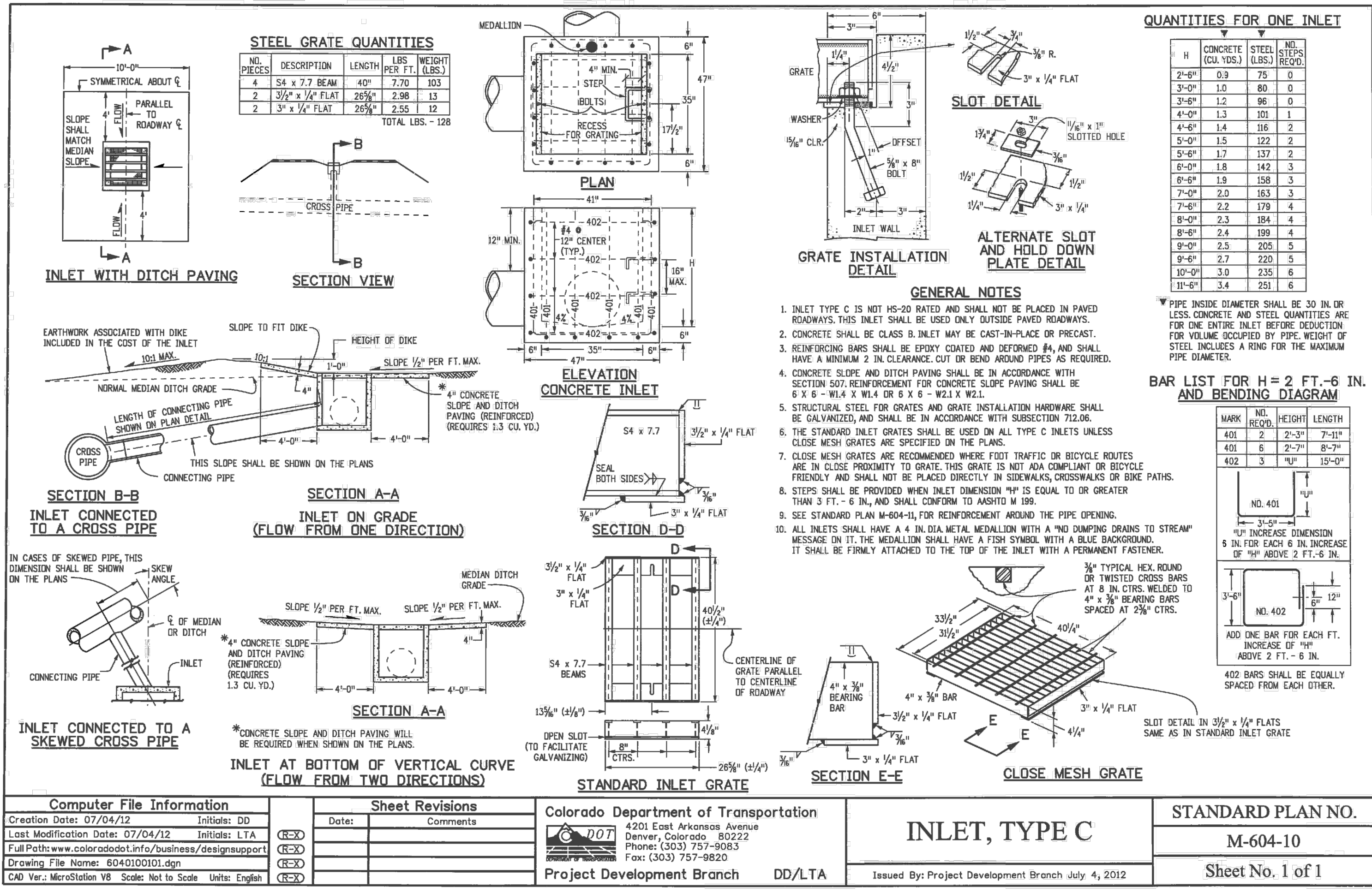


¹ Pipe must conform to requirements of ASTM designation F949. There shall be no evidence of splitting, cracking, or breaking when the pipe is tested per ASTM test method D2412 in accordance with F949 section 7.5 and ASTM F794 section 8.5. Contech A-2000 slotted pipe (or equal).

Sand Filter



SF-8 Urban Drainage and Flood Control District November 2015
Urban Storm Drainage Criteria Manual Volume 3



CLAREMONT BUSINESS PARK 2 FILING NO. 1

STANDARD DETAILS

PROJECT NO. 44-037

DESIGNED BY: GT

DRAWN BY: VAS

CHECKED BY:

DATE: 07/29/2020

SCALE: N/A

SHEET 11 OF 12

20 BOULDER CREST SUITE 110

COLOADO SPRINGS, CO 80903

PHONE: 719.555.5485

CIVIL CONSULTANTS, INC.

FOR AND ON BEHALF OF M&S CIVIL CONSULTANTS, INC.

REGISTERED PROFESSIONAL ENGINEER

NO. 37160

EXPIRATION DATE: 10-31-20

REVISIONS:

NO.	DATE:	BY:	DESCRIPTION:

THE ENGINEER PREPARING THESE PLANS WILL NOT BE RESPONSIBLE, OR LIABLE FOR UNAUTHORIZED CHANGES TO OR USES OF THESE PLANS. ALL CHANGES TO THE PLANS MUST BE IN WRITING AND MUST BE APPROVED BY THE PREPARER OF THESE PLANS.

CAUTION

