

[illegible]

MOUNTAIN VIEW ACADEMY

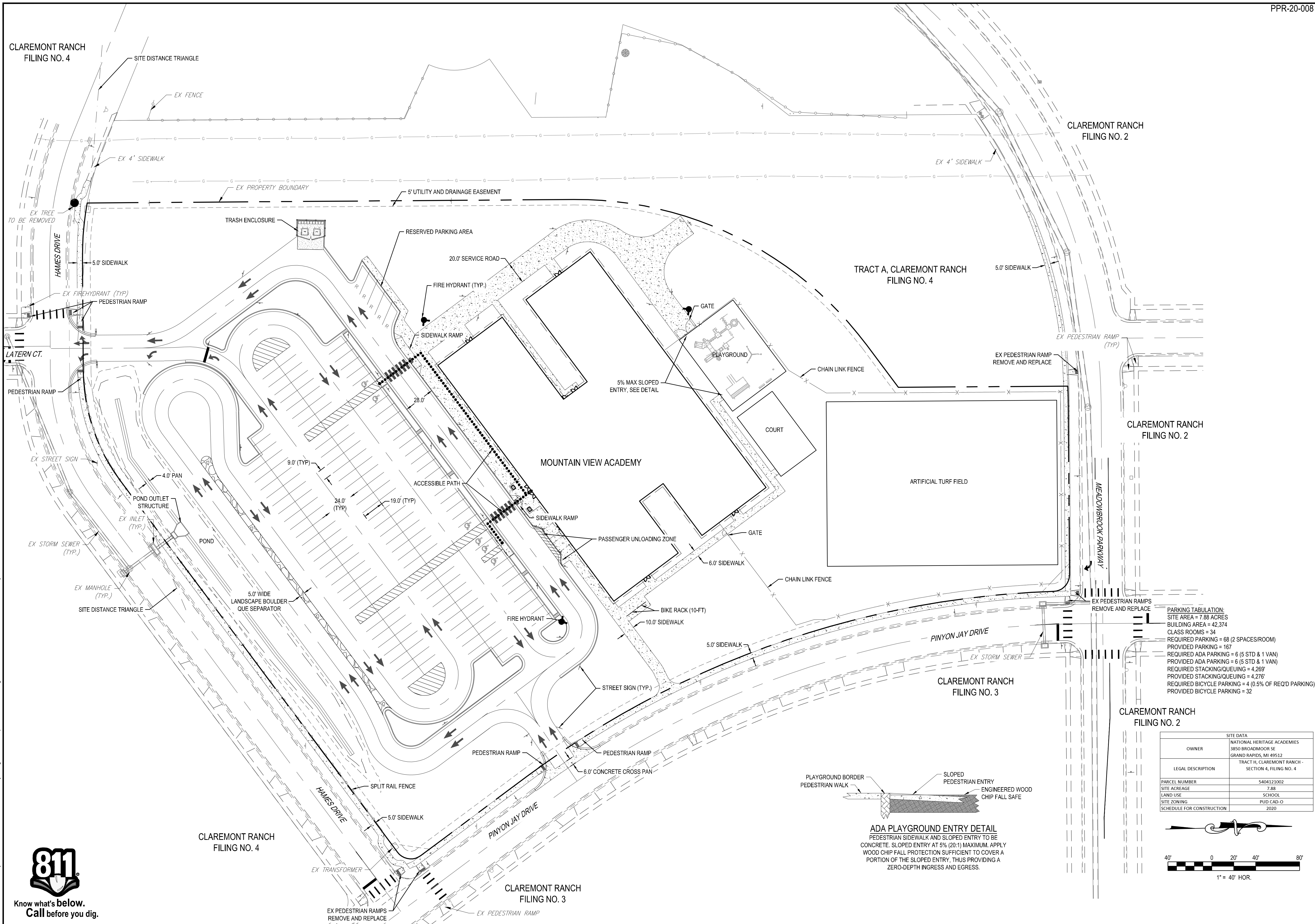
SITE DEVELOPMENT PLAN

SITE PLAN

JOB NUMBER 65120399	PRE STAMP	TITLE
DATE 02/07/2020		
SHEET SDP 1		
5 of 35		

FOR AND ON BEHALF OF MERRICK & COMPANY

File Location: Q:\DEN\Projects\0399-00 Mountain View Academy\Design\Site Development Plan\SITE.dwg Plot Date: 6/18/2020 3:24 PM Last Saved By: KW/EST

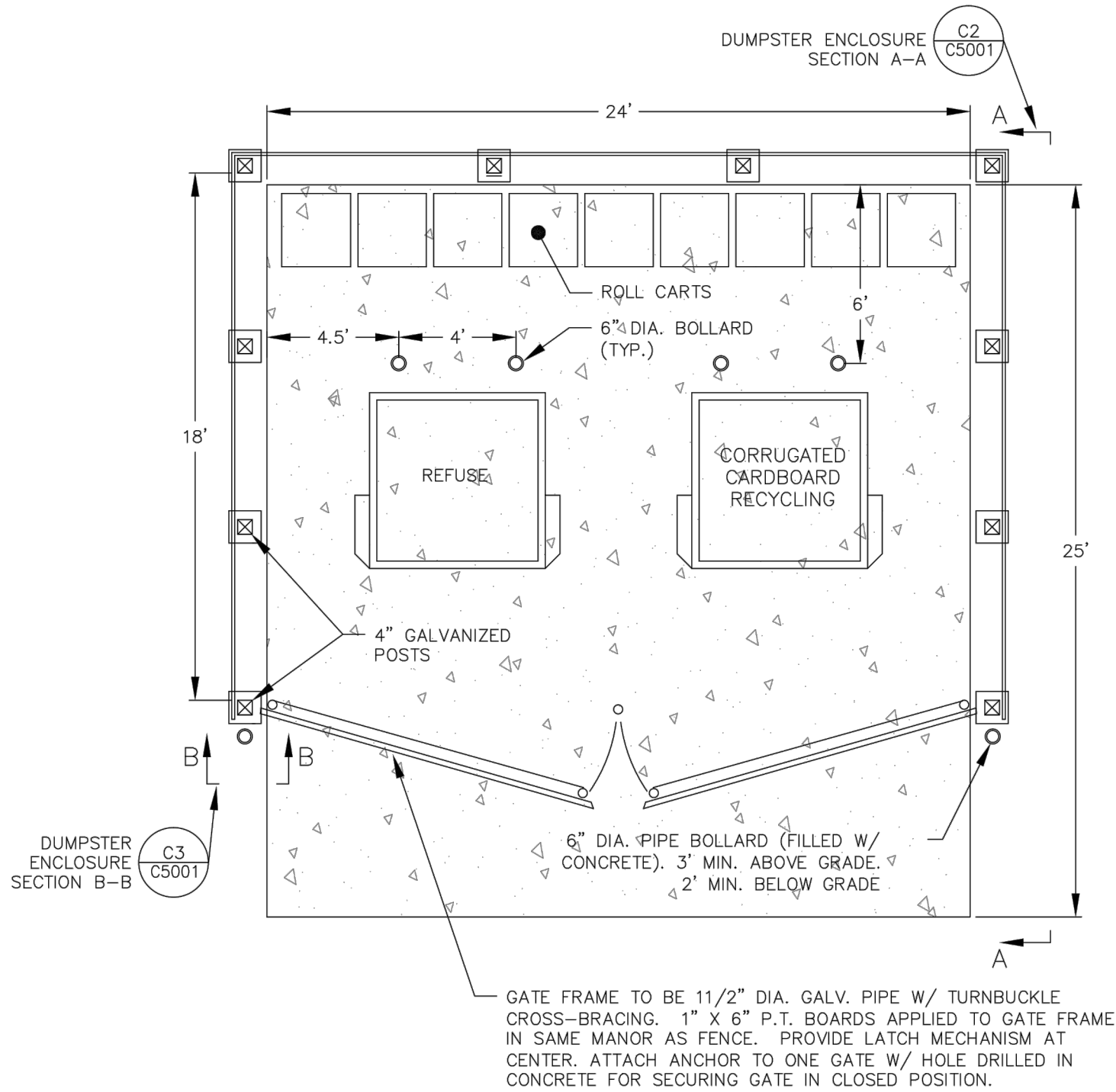


THE USE OF ANY OTHER ELECTRONIC MEDIA, INCLUDING BUT NOT LIMITED TO, FOR ANY PURPOSES, INCLUDING BUT NOT LIMITED TO, REPRODUCTION, DISTRIBUTION, OR ANY OTHER PROJECT, REUSE OR MODIFICATION, OF ANY INFORMATION, WITHOUT THE PRIOR WRITTEN CONSENT OF THE PROJECT OR ANY OTHER PROJECT, IS NOT PERMITTED OR REPRESENTED TO BE SUITABLE FOR REUSE IN WHOLE OR IN PART OR EXTENSION OF THE PROJECT OR ANY OTHER PROJECT, WITHOUT THE PRIOR WRITTEN CONSENT OF THE PROJECT OR ANY OTHER PROJECT.

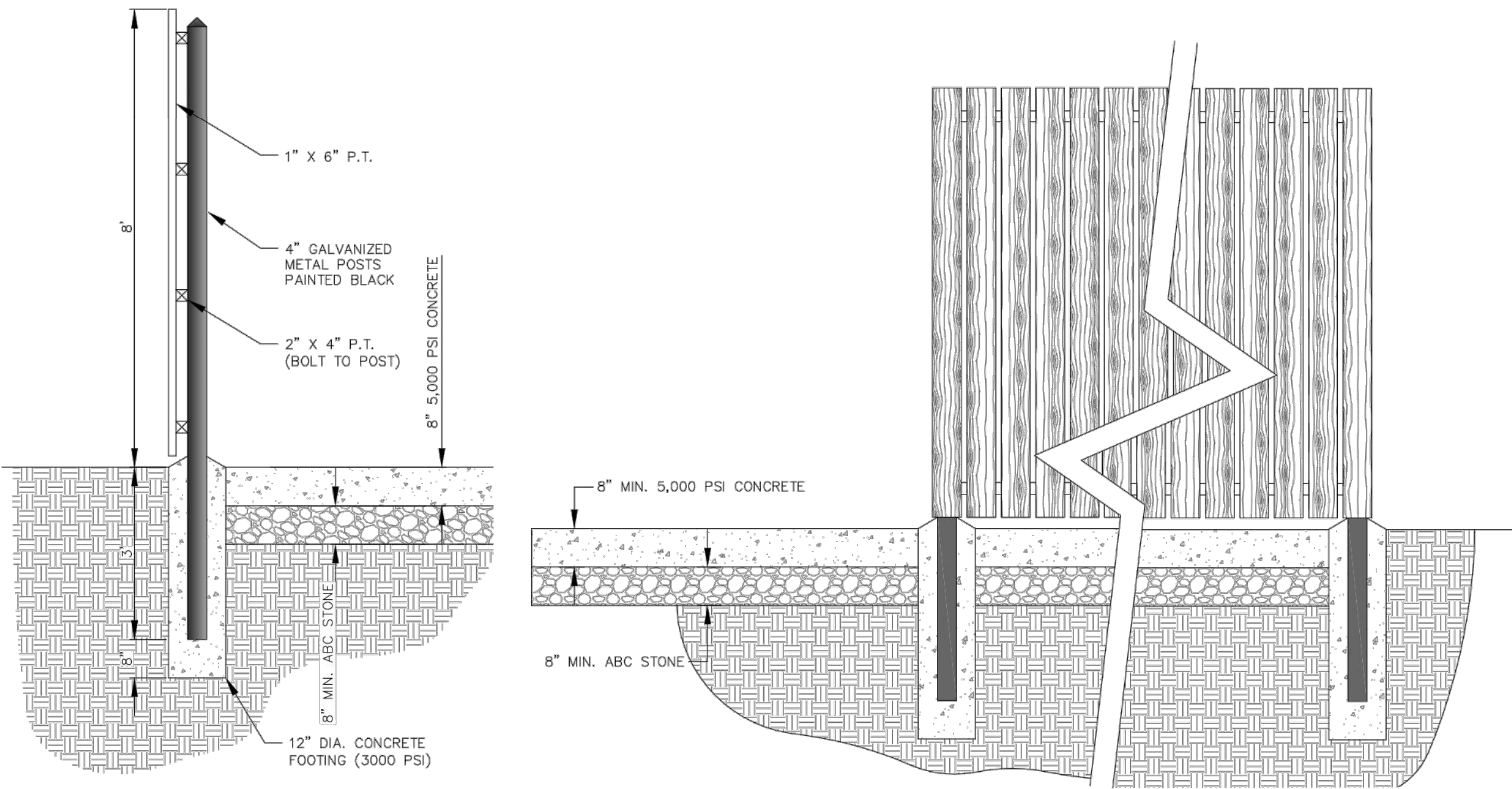
File Location: C:\DEN\Projects\0399-00 Mountain View Academy\Design\Site Development Plan\Site.dwg Plot Date: 6/19/2020 3:24 PM Last Saved By: KWLEST



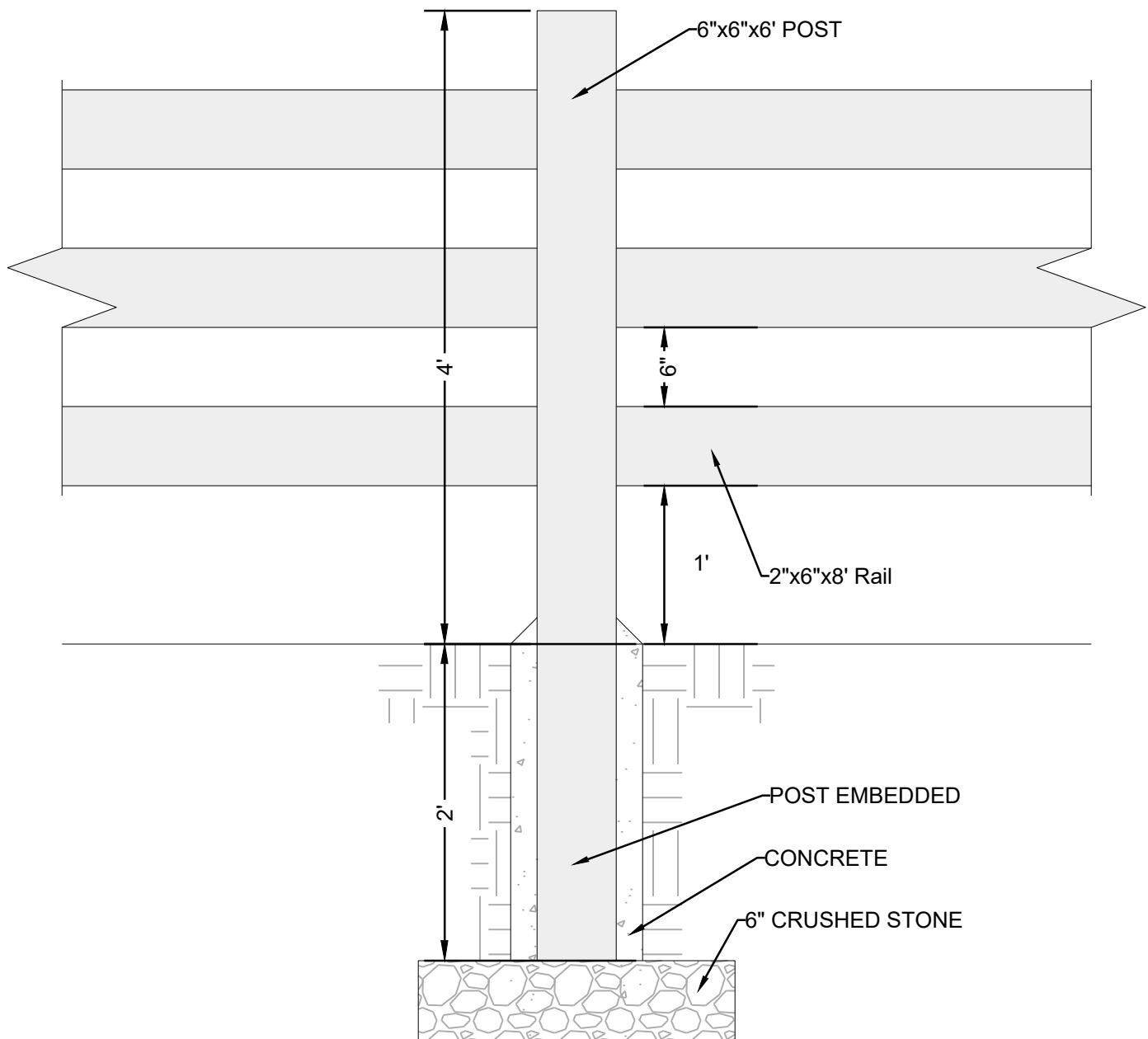
Know what's below.
Call before you dig.



TRASH ENCLOSURE DETAIL
NTS



TRASH ENCLOSURE ELEVATIONS
NTS



SPLIT RAIL FENCE DETAIL
NTS



Heavy Duty Bicycle Rack



The Heavy-Duty bicycle storage racks are made from galvanized, industrial grade steel that withstands years of outdoor use in high-traffic areas. Framing and tire rails are made of 1-11/16" galvanized pipe, and rungs are welded to both top and bottom rails to form a solid one-piece center section. GameTime's Heavy-Duty Bike Racks are available in 5', 10', 20' and 30' lengths...

Features and Benefits:

- 1-11/16" O.D. galvanized pipe end frames
- 1-11/16" O.D. galvanized pipe tire rails
- Solid, one-piece center section with H.R. steel 1/2" fabricated rungs
- 2" O.D. x 10 gauge galvanized tube sleeve
- High quality, durable hardware
- The Heavy-Duty rack is made to withstand years of outdoor use in high-traffic...

Model: 707

Limited Lifetime Warranty on uprights, hardware and connections. Visit gametime.com/warranty for full warranty information

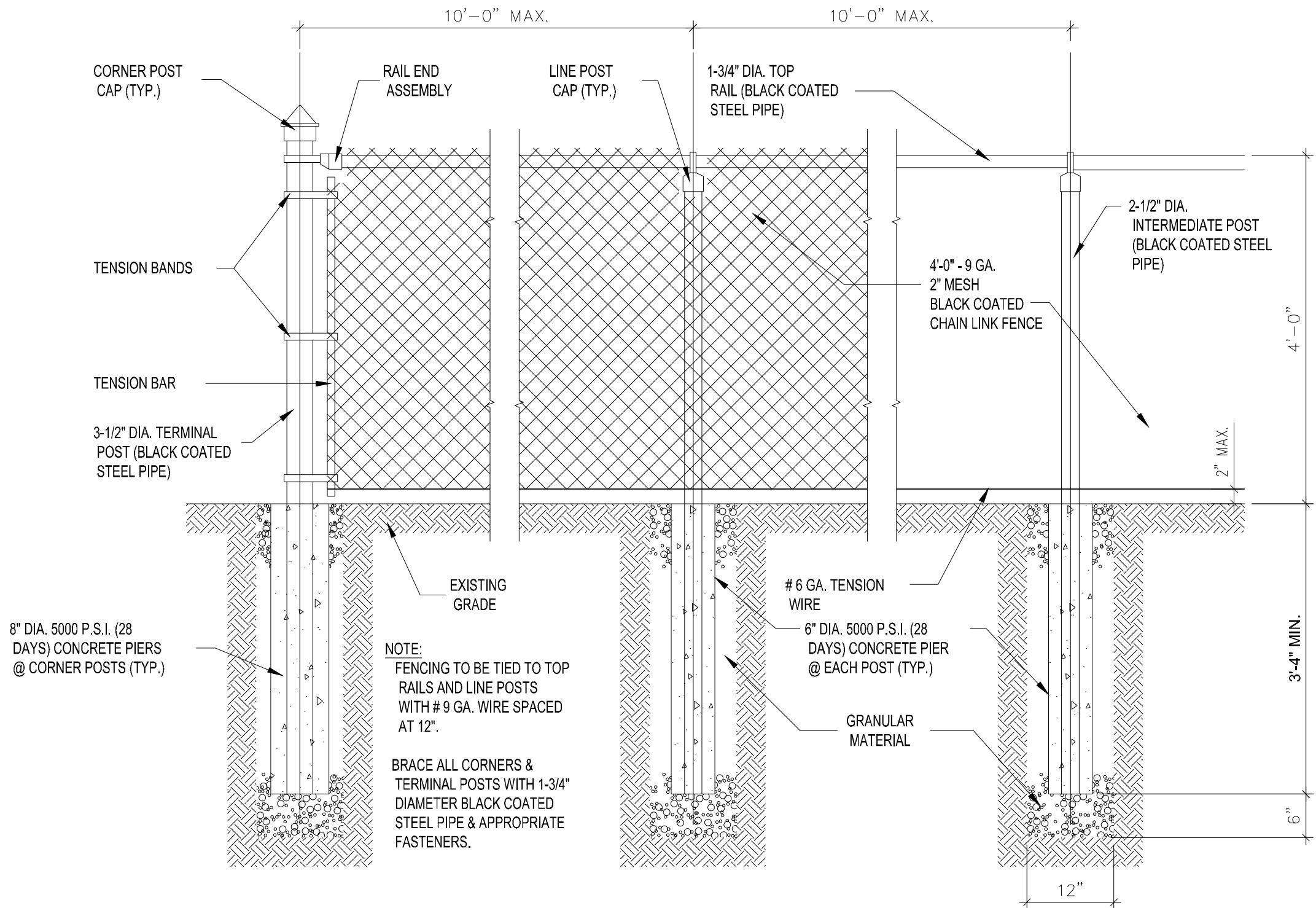
 Designing award-winning playgrounds since 1993.

 Certified installer Network - GameTime trained for GameTime playgrounds.

 Complies with ASTM standards before it leaves the factory.

BIKE RACK DETAIL

NTS



CHAIN LINK FENCE DETAIL
NTS

MOUNTAIN VIEW ACADEMY
SITE DEVELOPMENT PLAN
SITE DETAILS

TITLE

PREPARED

JOB NUMBER
65120399

DATE
02/07/2020

SHEET
SDP 2

of

FOR AND ON BEHALF OF MERRICK & COMPANY

REV/REVISION DESCRIPTION

DATE

CHND/CHKD/APPD



Engineering / Architecture / Design-Build / Surveying / Planning / Geospatial Solutions
5970 GREENWOOD PLAZA BLVD. GREENWOOD VILLAGE, CO. 80111
303-751-0741
www.merrick.com

PPR-20-008