

ISSUED FOR:

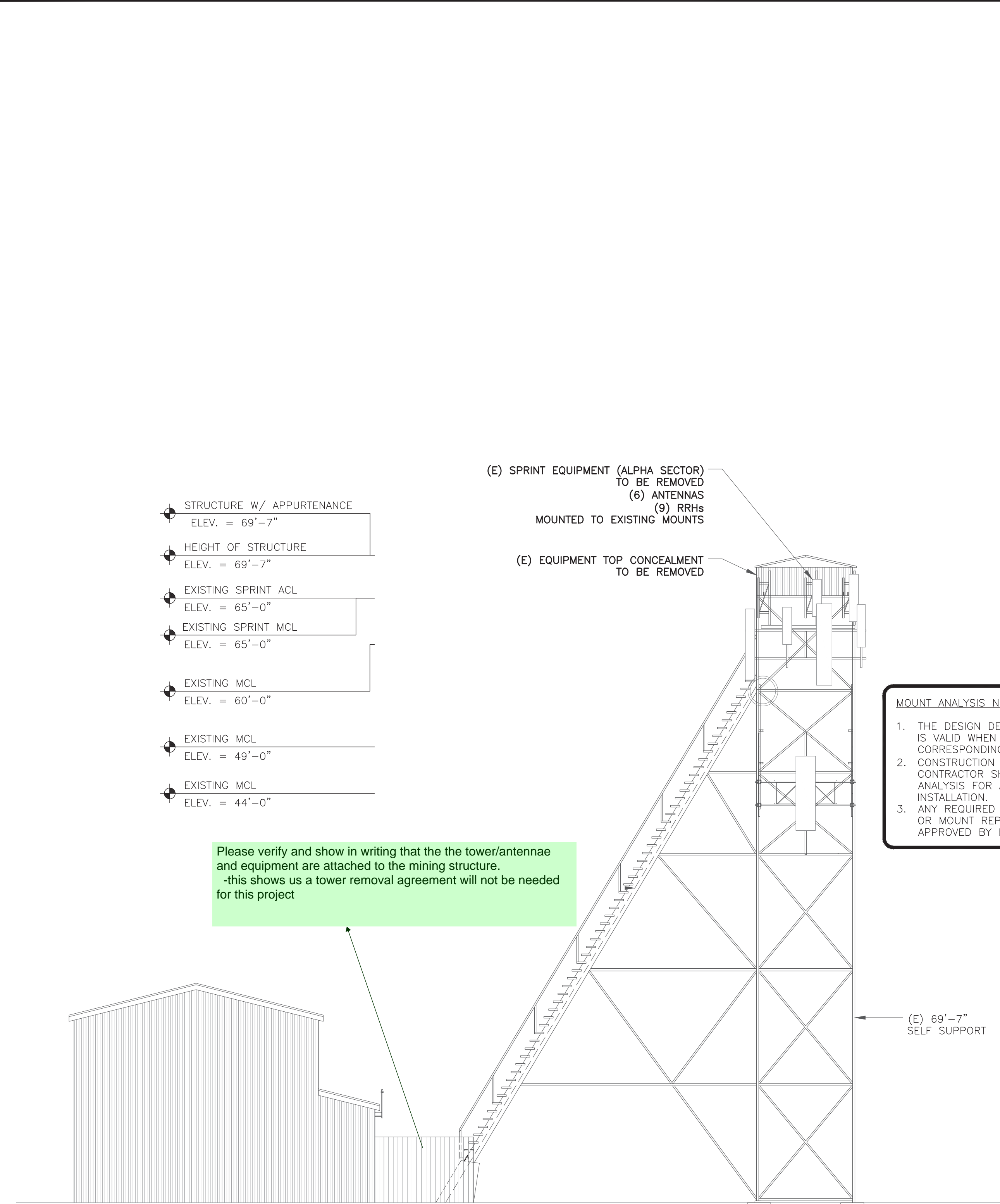
REV	DATE	DRWN	DESCRIPTION	DES./QA
0	05/05/21	VBP	CONSTRUCTION	JFJ
1	05/24/21	JLB	CONSTRUCTION	JFJ
2	06/21/21	AOW	CONSTRUCTION	JFJ
3	09/16/21	GVM	CONSTRUCTION	JFJ
4	04/14/22	PSS	CONSTRUCTION	JFJ



04/14/22

Andrew R. Berglund, P.E.
Professional Engineer License: #58272

IT IS A VIOLATION OF LAW FOR ANY PERSON,
UNLESS THEY ARE ACTING UNDER THE DIRECTION
OF A LICENSED PROFESSIONAL ENGINEER,
TO ALTER THIS DOCUMENT.



Please verify and show in writing that the tower/antennae and equipment are attached to the mining structure. -this shows us a tower removal agreement will not be needed for this project

MOUNT ANALYSIS NOTES:

1. THE DESIGN DEPICTED IN THESE DRAWINGS IS VALID WHEN ACCOMPANIED BY A CORRESPONDING PASSING MOUNT ANALYSIS. CONSTRUCTION MANAGER / GENERAL CONTRACTOR SHALL REVIEW THE MOUNT ANALYSIS FOR ANY CONDITIONS PRIOR TO INSTALLATION.
2. ANY REQUIRED MOUNT MODIFICATION DESIGN OR MOUNT REPLACEMENT SHALL BE APPROVED BY EOR.

