

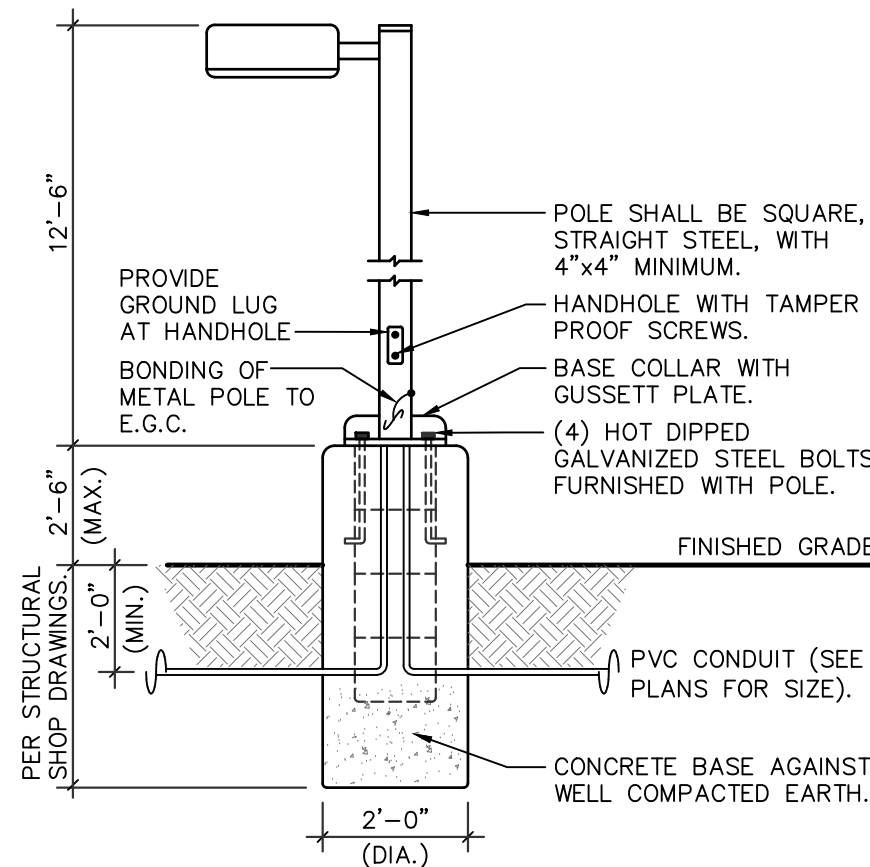
NOTE:
PRE-CURFEW DESIGN HOURS SHALL BE DEFINED FROM NOT LATER THAN ONE HOUR AFTER BUSINESS CLOSING AND POST-CURFEW DESIGN HOURS SHALL BE DEFINED AS NOT EARLIER THAN ONE HOUR BEFORE BUSINESS OPENING. ALL EXTERIOR LIGHTS SHALL BE DIMMED BY 60% DURING POST-CURFEW TO COMPLY WITH IECC 2018 C405.2.6. EXTERIOR LIGHTING CONTROLS.

NOTE:
ANY PROPOSED LIGHT FIXTURES INSTALLED ON PRIVATE PROPERTY, ADJACENT TO THE PUBLIC ROW, SHALL BE ORIENTED IN SUCH A MANNER OR LIMITED IN LUMEN OUTPUT TO PREVENT GLARE PROBLEMS AND SHALL NOT EXCEED NATIONAL I.E.S. LIGHTING STANDARDS FOR DISABILITY GLARE.

GENERAL NOTES - SITE

1. REFER TO ELECTRICAL SPECIFICATIONS FOR ADDITIONAL REQUIREMENTS AND COMPLETE CONTRACTUAL OBLIGATIONS.
2. ELECTRICAL CONTRACTOR SHALL CONTACT TELEPHONE COMPANY REGARDING EXACT LOCATION OF ALL PRIMARY SERVICE EQUIPMENT, TRENCH LOCATION, ETC.
3. ELECTRICAL CONTRACTOR SHALL PROVIDE ALL NECESSARY TELEPHONE TRENCHING, BACKFILL, AND CONDUIT STUBS INTO TRENCH AS REQUIRED BY TELEPHONE COMPANY AND TO THEIR SPECIFICATIONS.
4. ALL WIRING FOR OUTSIDE LIGHTING SHALL BE A MINIMUM OF #10 COPPER WITH TYPE THWN INSULATION. RUN UNDERGROUND CIRCUITS IN P.V.C. AND PROVIDE A #10 COPPER BOND IN ADDITION TO CIRCUIT CONDUCTORS. UNDERGROUND WIRING SHALL COMPLY WITH APPLICABLE CODES OF THE NEC.
5. ELECTRICAL CONTRACTOR SHALL PROVIDE NECESSARY SECONDARY CONDUCTORS, POWER TRENCHING, BACKFILL, AND CONCRETE PADS FOR TRANSFORMERS AND SERVICE EQUIPMENT. ADDITIONALLY PROVIDE CONDUIT STUBS INTO TRENCH PER POWER COMPANY SPECIFICATIONS AND REQUIREMENTS.
6. ALL WIRING SHALL BE COPPER. WIRING #4 AWG AND LARGER SHALL BE XHHW TYPE INSULATION.

POLE MOUNTED FIXTURE DETAIL



FIXTURE TYPE 'SA1' / 'SA2'

THE POLE CONCRETE BASE DETAIL IS SHOWN FOR ELECTRICAL ROUGH-IN AND SHALL NOT BE USED FOR THE ACTUAL BASE CONSTRUCTION. POLE BASE SHALL BE DESIGNED BY A REGISTERED STRUCTURAL PROFESSIONAL ENGINEER AND CONSTRUCTED PER STRUCTURAL ENGINEERS SEALED CONSTRUCTION DOCUMENT.

NOTE: ELECTRICAL CONTRACTOR SHALL BOND METAL POLE PER NEC 410.30(B)(5) AS SHOWN IN DETAIL.

LUMINAIRE SCHEDULE

1. PROVIDE 90 MINUTE EMERGENCY BATTERY BACK-UP FOR ALL EMERGENCY FIXTURES. SEE SCHEDULE BELOW FOR SPECIFICATIONS AND LUMEN REQUIREMENTS.
2. MODULAR WIRING SYSTEM FOR LIGHT FIXTURES IS AN ACCEPTABLE ALTERNATE.
3. BASE BID FOR LUMINAIRES SHALL BE BASED ON MANUFACTURERS LISTED IN CONTRACT DOCUMENTS. UPON AWARD OF PROJECT, ALTERNATES PROPOSED BY CONTRACTOR SHALL BE SUBMITTED WITH WRITTEN OWNER APPROVAL & AN INTENTED DEDUCT TO BASE BID.
4. ALTERNATE FIXTURE SELECTIONS MAY REQUIRE ADDITIONAL TIME FOR SUBMITTAL REVIEW & POSSIBLE ENGINEERING DESIGN CHANGES, TO BE BILLED TO THE CONTRACTOR.
5. PROVIDE MINIMUM 10 MINUTE TIME DELAY ON EMERGENCY FIXTURES WHEN HID AREA LIGHTING IS USED.

MARK	MANUFACTURER MODEL NUMBER	VOLTS	LAMPS CRI/CCT INPUT WATTS	REMARKS/MOUNTING
SA1	LITHONIA DSX0-LED-P1-40K- TSM-MVOLT-SSS	MVOLT	LED - 38W	POLE MOUNTED FIXTURE. REFER TO POLE MOUNTED FIXTURE DETAIL THIS SHEET.
SA2	LITHONIA DSX0-LED-P1-40K- T3M-MVOLT-HS-SSS	MVOLT	LED - 38W	POLE MOUNTED FIXTURE. REFER TO POLE MOUNTED FIXTURE DETAIL THIS SHEET.
SB-8	LITHONIA DMW2-2000LM-MD- PFL-MVOLT-40K-90CRI	MVOLT	LED - 19W	2' UNDER CANOPY FIXTURE.
SB-9	LITHONIA DMW2-2000LM-MD- PFL-MVOLT-40K-90CRI	MVOLT	LED - 19W	2' UNDER CANOPY FIXTURE.
SC-10	LITHONIA WST-LED-P1-40K -VW-MVOLT	MVOLT	LED 12W	WALL MOUNTED LED AREA LIGHT. PROVIDE WITH 90 MINUTE BATTERY BACKUP WHERE NOTED 'EM'.
SC-15	LITHONIA WST-LED-P1-40K -VW-MVOLT	MVOLT	LED 12W	WALL MOUNTED LED AREA LIGHT. PROVIDE WITH 90 MINUTE BATTERY BACKUP WHERE NOTED 'EM'.

PRELIMINARY NOT FOR CONSTRUCTION

DESIGN CODES
IBC, 2018 NEC, 2017

ELECTRICAL CONTRACTOR SHALL NOTIFY
DESIGNER/ENGINEER PRIOR TO ANY DEVIATION
FROM THIS SET OF ELECTRICAL DESIGN PLANS.
ANY CHANGES TO THE DESIGN, IF APPROVED
BY ENGINEER, WILL REQUIRE REVISIONS TO
PLANS AND POSSIBLE ADDITIONAL SERVICE
FEE.



Project Contact/Designer: **Chad Curry**
Project # **20473**
HAWKINS DESIGN GROUP INC.
ELECTRICAL CONSULTING ENGINEERS
140 WEST HARVEL ROAD
MESA, ARIZONA 85233
PH 480.813.9000 FAX 480.813.9001
EMAIL email@hawkinsdsg.com

All concepts, designs and data indicated on these drawings are the sole property of the Hawkins Design Group, Inc., and shall not be used for any other purpose other than originally intended without written permission of the engineer.

IF DRAWING IS NOT PLOTTED AT 24 X 36 THEY ARE NOT FULL SIZE

REVISIONS	DATE	DESCRIPTION
REVISION		

DESIGN SWK	DRAWN SWK	CHKD TOP
SCALE	H: V:	
JOB No.	020441-01-001	
DATE :	02/05/2021	
SHEET	DR1.0	

Schedule									
Symbol	Label	QTY	Manufacturer	Catalog Number	Description	Lamp	Lumens per Lamp	LLF	Wattage
	SA1	4	Lithonia Lighting	DSX0 LED P1 40K T5M MVOLT/ SSS POLE MOUNT AT15'	DSX0 LED P1 40K T5M MVOLT	LED	4891	0.65	38
	SA2	2	Lithonia Lighting	DSX0 LED P1 40K T3M MVOLT HS/ SSS POLE MOUNT AT15'	DSX0 LED P1 40K T3M MVOLT with houseside shield	LED	3708	0.65	38
	SB-8	34	Lithonia Lighting	DMW2 2000LM MD PFL MVOLT 40K 90CRI	DMW2 L24 2000LM MD PFL MVOLT GZ1 40K 90CRI (GLEDs), MOUNTED @ 8'-0" AFG	LED	1823	0.65	18.78
	SB-9	3	Lithonia Lighting	DMW2 2000LM MD PFL MVOLT 40K 90CRI	DMW2 L24 2000LM MD PFL MVOLT GZ1 40K 90CRI (GLEDs), MOUNTED @ 9'-0" AFG	LED	1823	0.65	18.78
	SC-10	5	Lithonia Lighting	WST LED P1 40K VW MVOLT (FINISH)	WST LED, Performance package 1, 4000 K, visual comfort wide, MVOLT. MOUNTED @ 10'-0" AFG	LED	1659	0.65	12
	SC-15	2	Lithonia Lighting	WST LED P1 40K VW MVOLT (FINISH)	WST LED, Performance package 1, 4000 K, visual comfort wide, MVOLT. MOUNTED @ 15'-0" AFG	LED	1659	0.65	12

Statistics						
Description	Symbol	Avg	Max	Min	Max/Min	Avg/Min
PROPERTY LINE - FC @ GRADE	X	0.1 fc	0.3 fc	0.0 fc	N/A	N/A
SITE - FC @ GRADE	+	2.6 fc	11.3 fc	0.2 fc	56.5:1	13.0:1

POLE MOUNTED FIXTURE DETAIL

PER STRUCTURAL SHOP DRAWINGS: 2'-0" (MAX.)
2'-0" (MIN.)
12'-6"

PROVIDE GROUND LUG AT HANDHOLE.
BONDING OF METAL POLE TO E.G.C.

POLE SHALL BE SQUARE, STRAIGHT STEEL, WITH 4"x4" MINIMUM.
HANDHOLE WITH TAMPER PROOF SCREWS.
BASE COLLAR WITH GUSSETT PLATE.
(4) HOT DIPPED GALVANIZED STEEL BOLTS FURNISHED WITH POLE.

FINISHED GRADE

PVC CONDUIT (SEE PLANS FOR SIZE).

CONCRETE BASE AGAINST WELL COMPACTED EARTH.

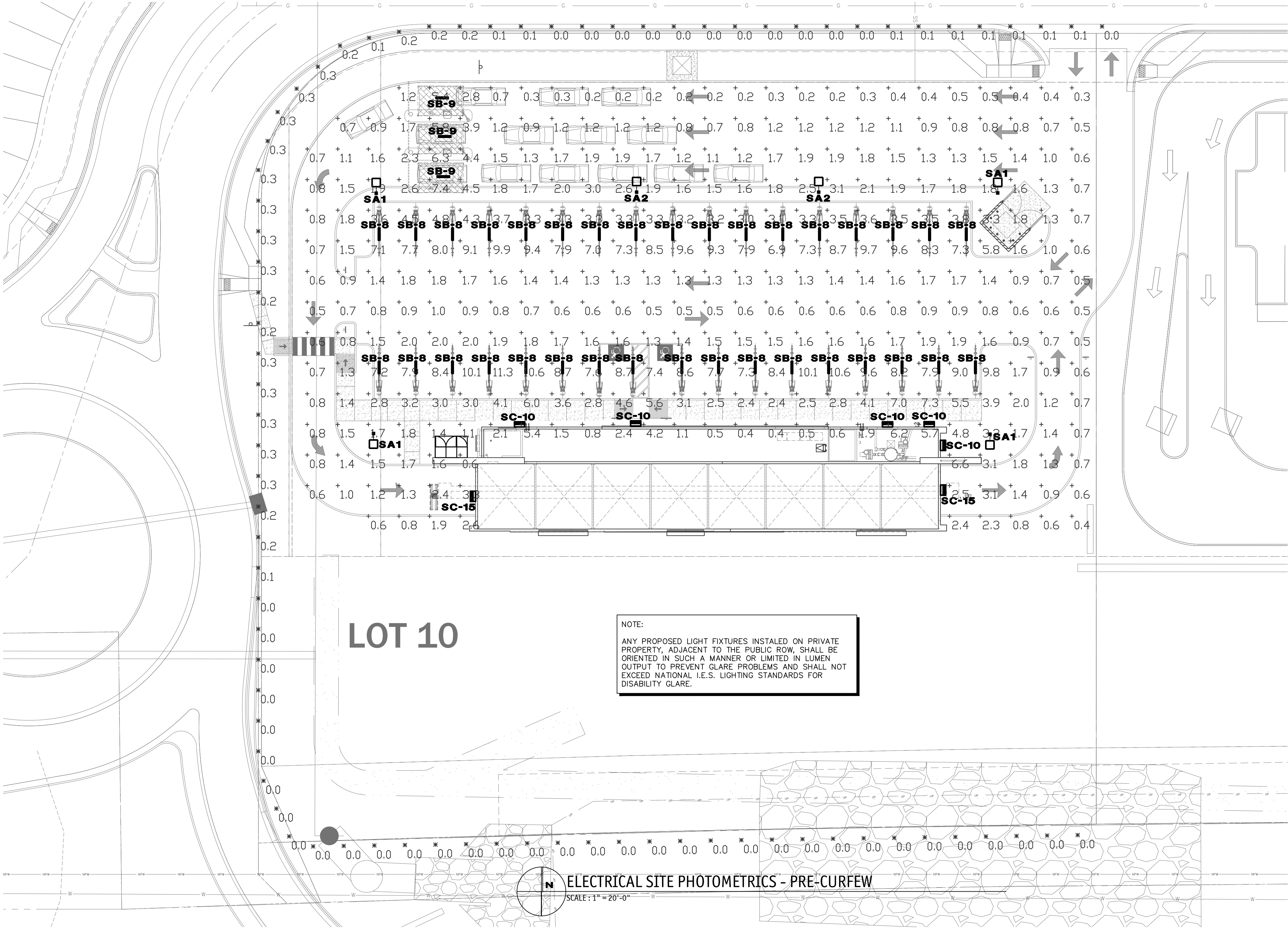
2'-0" (DIA.)

FIXTURE TYPE 'SA1' / 'SA2'

THE POLE CONCRETE BASE DETAIL IS SHOWN FOR ELECTRICAL ROUGH-IN AND SHALL NOT BE USED FOR THE ACTUAL BASE CONSTRUCTION. POLE BASE SHALL BE DESIGNED BY A REGISTERED STRUCTURAL PROFESSIONAL ENGINEER AND CONSTRUCTED PER STRUCTURAL ENGINEERS SEALED CONSTRUCTION DOCUMENT.

NOTE: ELECTRICAL CONTRACTOR SHALL BOND METAL POLE PER NEC 410.30(B)(5) AS SHOWN IN DETAIL.

NOTE:
PRE-CURFEW DESIGN HOURS SHALL BE DEFINED FROM NOT LATER THAN ONE HOUR AFTER BUSINESS CLOSING AND POST-CURFEW DESIGN HOURS SHALL BE DEFINED AS NOT EARLIER THAN ONE HOUR BEFORE BUSINESS OPENING. ALL EXTERIOR LIGHTS SHALL BE DIMMED BY 60% DURING POST-CURFEW TO COMPLY WITH IECC 2018 C405.2.6. EXTERIOR LIGHTING CONTROLS.



PRELIMINARY
NOT FOR CONSTRUCTION

DESIGN CODES
IBC, 2018 NEC, 2017

ELECTRICAL CONTRACTOR SHALL NOTIFY DESIGNER/ENGINEER PRIOR TO ANY DEVIATION FROM THIS SET OF ELECTRICAL DESIGN PLANS. ANY CHANGES TO THE DESIGN, IF APPROVED BY ENGINEER, WILL REQUIRE REVISIONS TO PLANS AND POSSIBLE ADDITIONAL SERVICE FEE.

Project Contact/Designer: **Chad Curry**
Project # **20473**
HAWKINS DESIGN GROUP INC.
ELECTRICAL CONSULTING ENGINEERS
140 WEST HARVEL ROAD
MESA, ARIZONA 85233
Ph 480.813.9000 Fax 480.813.9001
EMAIL: email@hawkinsdg.com

All concepts, designs and data indicated on these drawings are the sole property of the Hawkins Design Group, Inc., and shall not be used for any other purpose other than originally intended without written permission of the engineer.

IF DRAWING IS NOT PLOTTED AT 24 X 36 THEY ARE NOT FULL SIZE

Phone: (303) 801-2900
www.bowmanconsulting.com

DATE	
REVISION	
DESCRIPTION	

SEAL

PRELIMINARY NOT FOR CONSTRUCTION
Expires: XX/XX/XX

DESIGN SWK	DRAWN SWK	CHKD TOP
SCALE:	H: V:	
JOB No.	202441-01-001	
DATE :	02/05/2021	
SHEET	DR2.0	

SUPER STAR CAR WASH - FALCON MARKETPLACE LOT 10
SITE DEVELOPMENT PLAN

COLORADO

EL PASO COUNTY

