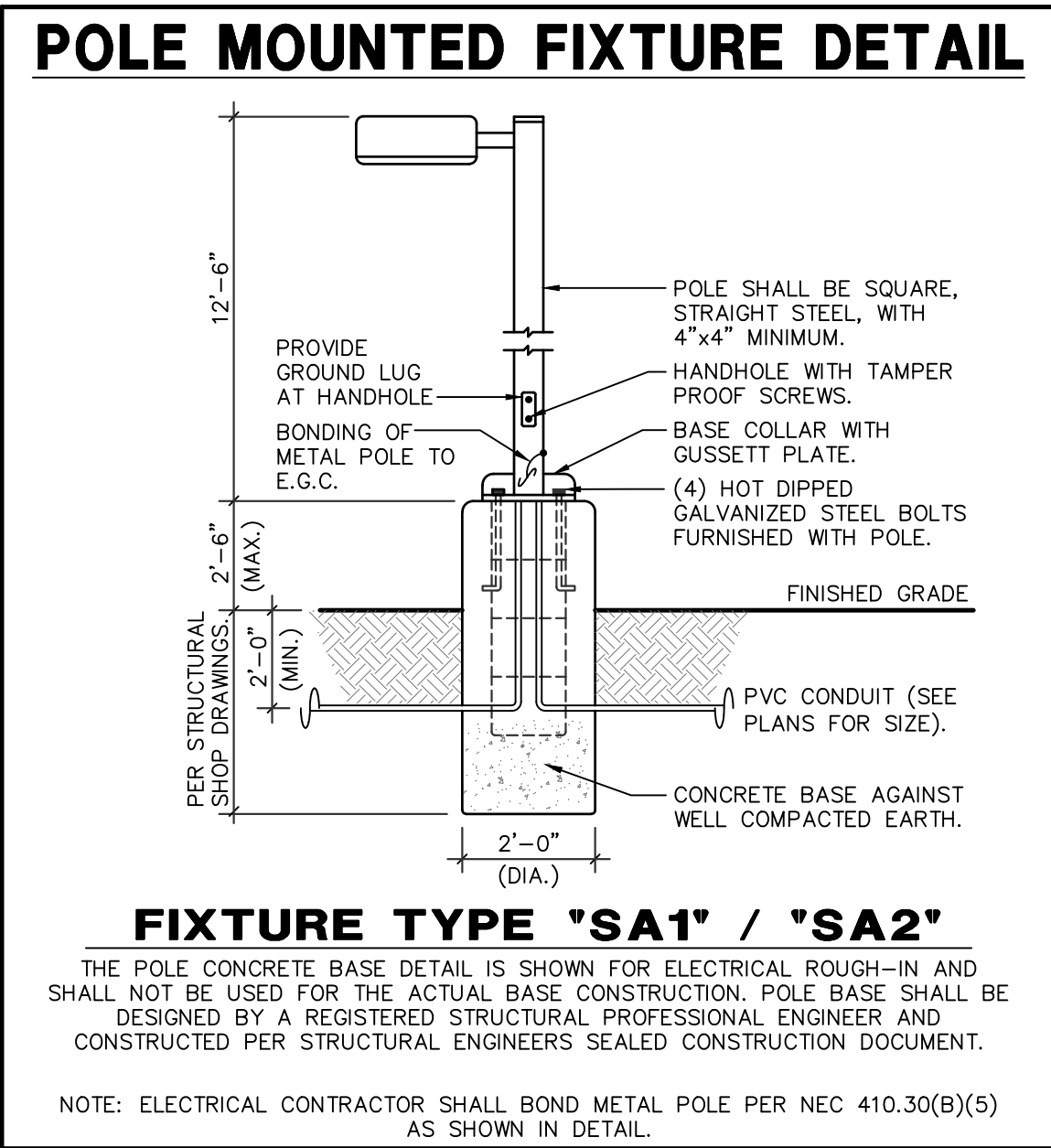


| LUMINAIRE SCHEDULE | | | | |
|--|--|-------|---------------------------------|--|
| 1. PROVIDE 90 MINUTE EMERGENCY BATTERY BACK-UP FOR ALL EMERGENCY FIXTURES. SEE SCHEDULE BELOW FOR SPECIFICATIONS AND LUMEN REQUIREMENTS. | | | | |
| 2. MODULAR WIRING SYSTEM FOR LIGHT FIXTURES IS AN ACCEPTABLE ALTERNATE. | | | | |
| 3. BASE BID FOR LUMINAIRES SHALL BE BASED ON MANUFACTURERS LISTED IN CONTRACT DOCUMENTS. UPON AWARD OF PROJECT, ALTERNATES PROPOSED BY CONTRACTOR SHALL BE SUBMITTED WITH WRITTEN OWNER APPROVAL & AN ITEMIZED DEDUCT TO BASE BID. | | | | |
| 4. ALTERNATE FIXTURE SELECTIONS MAY REQUIRE ADDITIONAL TIME FOR SUBMITTAL REVIEW & POSSIBLE ENGINEERING DESIGN CHANGES, TO BE BILLED TO THE CONTRACTOR. | | | | |
| 5. PROVIDE MINIMUM 10 MINUTE TIME DELAY ON EMERGENCY FIXTURES WHEN HID AREA LIGHTING IS USED. | | | | |
| MARK | MANUFACTURER MODEL NUMBER | VOLTS | LAMPS CRI/CCT INPUT WATTS | REMARKS/MOUNTING |
| SA1 | LITHONIA DSX0-LED-P1-40K-TSM-MVOLT-SSS | MVOLT | LED - 38W | POLE MOUNTED FIXTURE. REFER TO POLE MOUNTED FIXTURE DETAIL THIS SHEET. |
| SA2 | LITHONIA DSX0-LED-P1-40K-BLC-MVOLT-SSS | MVOLT | LED - 38W | POLE MOUNTED FIXTURE. REFER TO POLE MOUNTED FIXTURE DETAIL THIS SHEET. |
| SB-8 | LITHONIA DMW2-2000LM-MD-PFL-MVOLT-40K-80CRI | MVOLT | LED - 19W | 2' UNDER CANOPY FIXTURE. |
| SB-9 | LITHONIA DMW2-2000LM-MD-PFL-MVOLT-40K-90CRI | MVOLT | LED - 19W | 2' UNDER CANOPY FIXTURE. |
| SC-10 | LITHONIA WST-LED-P1-40K-VW-MVOLT | MVOLT | LED - 12W | WALL MOUNTED LED AREA LIGHT. PROVIDE WITH 90 MINUTE BATTERY BACKUP WHERE NOTED 'EM'. |
| SC-15 | LITHONIA WST-LED-P1-40K-VW-MVOLT | MVOLT | LED - 12W | WALL MOUNTED LED AREA LIGHT. PROVIDE WITH 90 MINUTE BATTERY BACKUP WHERE NOTED 'EM'. |

- GENERAL NOTES - SITE**
- REFER TO ELECTRICAL SPECIFICATIONS FOR ADDITIONAL REQUIREMENTS AND COMPLETE CONTRACTUAL OBLIGATIONS.
 - ELECTRICAL CONTRACTOR SHALL CONTACT TELEPHONE COMPANY REGARDING EXACT LOCATION OF ALL PRIMARY SERVICE EQUIPMENT, TRENCH LOCATION, ETC.
 - ELECTRICAL CONTRACTOR SHALL PROVIDE ALL NECESSARY TELEPHONE TRENCHING, BACKFILL, AND CONDUIT STUBS INTO TRENCH AS REQUIRED BY TELEPHONE COMPANY AND TO THEIR SPECIFICATIONS.
 - ALL WIRING FOR OUTSIDE LIGHTING SHALL BE A MINIMUM OF #10 COPPER WITH TYPE THWN INSULATION. RUN UNDERGROUND CIRCUITS IN P.V.C. AND PROVIDE A #10 COPPER BOND IN ADDITION TO CIRCUIT CONDUCTORS. UNDERGROUND WIRING SHALL COMPLY WITH APPLICABLE CODES OF THE NEC.
 - ELECTRICAL CONTRACTOR SHALL PROVIDE NECESSARY SECONDARY CONDUCTORS, POWER TRENCHING, BACKFILL, AND CONCRETE PADS FOR TRANSFORMERS AND SERVICE EQUIPMENT. ADDITIONALLY PROVIDE CONDUIT STUBS INTO TRENCH PER POWER COMPANY SPECIFICATIONS AND REQUIREMENTS.
 - ALL WIRING SHALL BE COPPER. WIRING #4 AWG AND LARGER SHALL BE XHHW TYPE INSULATION.



**PRELIMINARY
NOT FOR CONSTRUCTION**



Know what's below.
Call before you dig.

DESIGN CODES
IBC, 2018 NEC, 2017

ELECTRICAL CONTRACTOR SHALL NOTIFY DESIGNER/ENGINEER PRIOR TO ANY DEVIATION FROM THIS SET OF ELECTRICAL DESIGN PLANS. ANY CHANGES TO THE DESIGN, IF APPROVED BY ENGINEER, WILL REQUIRE REVISIONS TO PLANS AND POSSIBLE ADDITIONAL SERVICE FEE.

HAWKINS DESIGN GROUP INC.
ELECTRICAL CONSULTING ENGINEERS
1140 WEST HARWELL ROAD
MESA, ARIZONA 85203
PH 480.813.9000 FAX 480.813.9001
EMAIL email@hawkinsdsg.com

All concepts, designs and data indicated on these drawings are the sole property of the Hawkins Design Group, Inc., and shall not be used for any other purpose other than originally intended without written permission of the engineer.

IF DRAWING IS NOT PLOTTED AT 24 X 36 THEY ARE NOT FULL SIZE

REVISIONS

| REVISION | DESCRIPTION | DATE |
|----------|---|------------|
| 1 | SSCW-FALCON MARKETPLACE-2nd SPD SUBMITTAL | 05/11/2021 |

DATE

05/11/2021

DESCRIPTION

SSCW-FALCON MARKETPLACE-2nd SPD SUBMITTAL

REVISION

1

SUPER STAR CAR WASH
FALCON MARKETPLACE LOT 10
SITE DEVELOPMENT PLAN

COLORADO
EL PASO COUNTY

CAWLEY ARCHITECTS

730 N. 52nd St. Ste. 203
Phoenix, Arizona 85008
P 602.393.5060

CawleyArchitects.com

811

Know what's below.
Call before you dig.

DESIGN
CRC

DRAWN
CRC

CHKD
AG

SCALE

H:
V:

JOB No.

020441-01-001

DATE

02/09/2021

CA Project: 20135

SEAL

PRELIMINARY NOT FOR CONSTRUCTION

Expires: XX/XX/XX

SHEET

DR1.0

Bowman

© 2021 Bowman Consulting Group, Ltd.
1526 Cole Blvd., Suite 100
Lakewood, CO 80401
Phone: (303) 801-2900
www.bowmanconsulting.com

EL PASO COUNTY

| Schedule | | | | | | | | | |
|----------|-------|-----|-------------------|--|--|------|-----------------|------|---------|
| Symbol | Label | QTY | Manufacturer | Catalog Number | Description | Lamp | Lumens per Lamp | LLF | Wattage |
| SA1 | SA1 | 3 | Lithonia Lighting | DSXO LED P1 40K TSM MVOLT / SSS POLE MOUNT AT15' | DSXO LED P1 40K TSM MVOLT | LED | 4891 | 0.91 | 38 |
| SA2 | SA2 | 3 | Lithonia Lighting | DSXO LED P1 40K BLC MVOLT / SSS POLE MOUNT AT15' | DSXO LED P1 40K BLC MVOLT | LED | 3862 | 0.91 | 38 |
| SB-8 | SB-8 | 34 | Lithonia Lighting | DMW2 2000LM WD PFL MVOLT 40K 90CRI | DMW2 24 2000LM WD PFL MVOLT G21 40K 90CRI (GLEDS) | | 1913 | 0.91 | 18.78 |
| SB-9 | SB-9 | 3 | Lithonia Lighting | DMW2 2000LM MD PFL MVOLT 40K 90CRI | DMW2 24 2000LM MD PFL MVOLT G21 40K 90CRI (GLEDS), MOUNTED @ 9'-0" AFG | LED | 1823 | 0.91 | 18.78 |
| SC-10 | SC-10 | 5 | Lithonia Lighting | WST LED P1 40K VW MVOLT (TENSEH) | WST LED, Performance package 1, 4000 K, visual comfort wide, MVOLT, MOUNTED @ 10'-0" AFG | LED | 1659 | 0.91 | 12 |
| SC-15 | SC-15 | 2 | Lithonia Lighting | WST LED P1 40K VW MVOLT (TENSEH) | WST LED, Performance package 1, 4000 K, visual comfort wide, MVOLT, MOUNTED @ 15'-0" AFG | LED | 1659 | 0.91 | 12 |

| Statistics | | | | | | |
|----------------------------|--------|--------|--------|--------|---------|---------|
| Description | Symbol | Avg | Max | Min | Max/Min | Avg/Min |
| PROPERTY LINE - FC @ GRADE | ✕ | 0.0 fc | 0.1 fc | 0.0 fc | N/A | N/A |
| SITE - FC @ GRADE | + | 2.6 fc | 9.7 fc | 0.2 fc | 48.5 ft | 13.0 ft |

POLE MOUNTED FIXTURE DETAIL

12'-6"

2'-6" (MAX.)

2'-0" (MIN.)

PER STRUCTURAL SHOP DRAWINGS

2'-0" (DIA.)

PROVIDE GROUND LUG AT HANDHOLE

BONDING OF METAL POLE TO E.G.C.

POLE SHALL BE SQUARE, STRAIGHT STEEL, WITH 4"x4" MINIMUM.

HANDHOLE WITH TAMPER PROOF SCREWS.

BASE COLLAR WITH GUSSETT PLATE.

(4) HOT DIPPED GALVANIZED STEEL BOLTS FURNISHED WITH POLE.

FINISHED GRADE

PVC CONDUIT (SEE PLANS FOR SIZE).

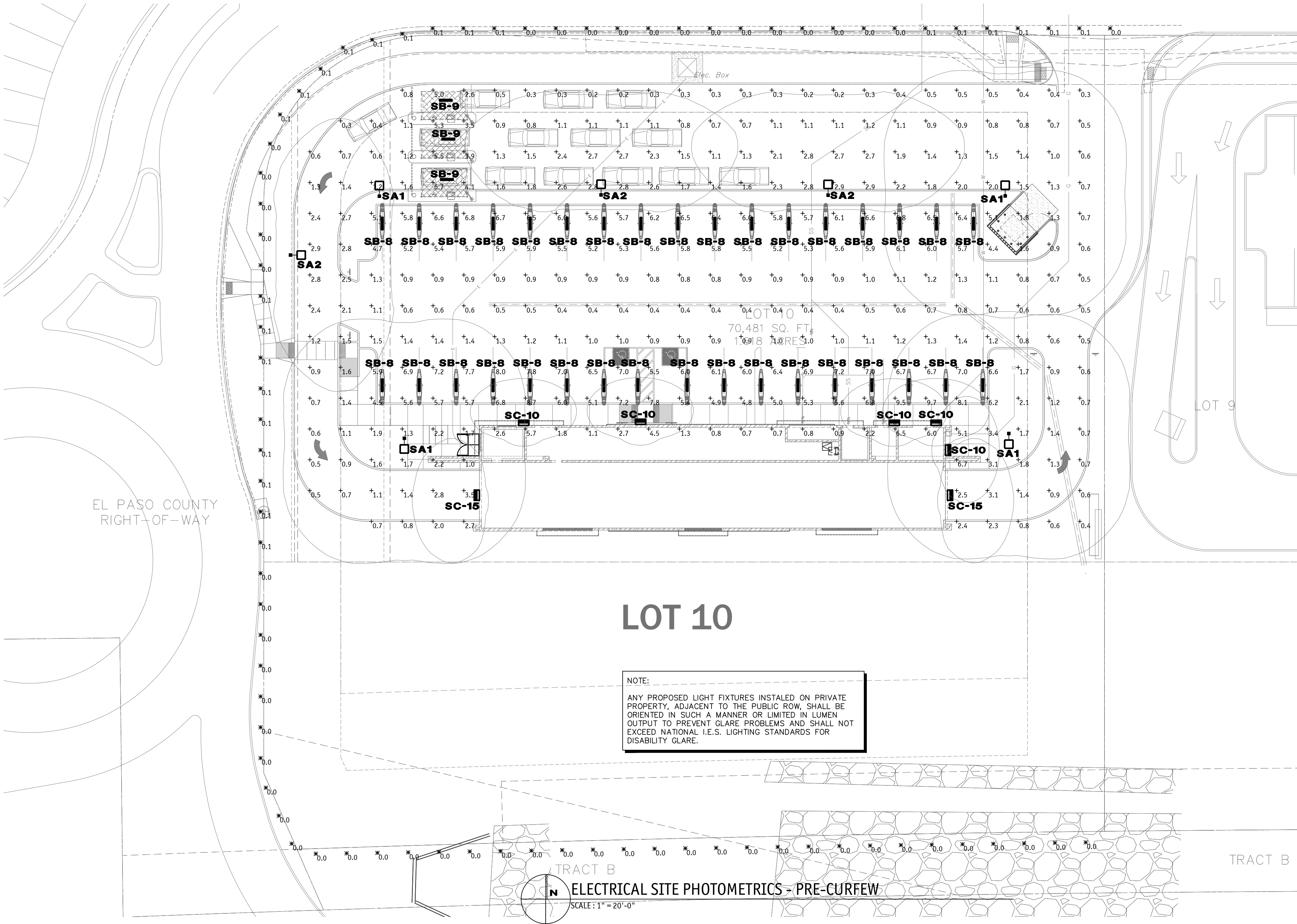
CONCRETE BASE AGAINST WELL COMPACTED EARTH.

FIXTURE TYPE 'SA1' / 'SA2'

THE POLE CONCRETE BASE DETAIL IS SHOWN FOR ELECTRICAL ROUGH-IN AND SHALL NOT BE USED FOR THE ACTUAL BASE CONSTRUCTION. POLE BASE SHALL BE DESIGNED BY A REGISTERED STRUCTURAL PROFESSIONAL ENGINEER AND CONSTRUCTED PER STRUCTURAL ENGINEERS SEALED CONSTRUCTION DOCUMENT.

NOTE: ELECTRICAL CONTRACTOR SHALL BOND METAL POLE PER NEC 410.30(B)(5) AS SHOWN IN DETAIL.

NOTE:
PRE-CURFEW DESIGN HOURS SHALL BE DEFINED FROM NOT LATER THAN ONE HOUR AFTER BUSINESS CLOSING AND POST-CURFEW DESIGN HOURS SHALL BE DEFINED AS NOT EARLIER THAN ONE HOUR BEFORE BUSINESS OPENING. ALL EXTERIOR LIGHTS SHALL BE DIMMED BY 60% DURING POST-CURFEW TO COMPLY WITH IECC 2018 C405.2.6. EXTERIOR LIGHTING CONTROLS.

NOTE:
ANY PROPOSED LIGHT FIXTURES INSTALLED ON PRIVATE PROPERTY, ADJACENT TO THE PUBLIC ROW, SHALL BE ORIENTED IN SUCH A MANNER OR LIMITED IN LUMEN OUTPUT TO PREVENT GLARE PROBLEMS AND SHALL NOT EXCEED NATIONAL I.E.S. LIGHTING STANDARDS FOR DISABILITY GLARE.

LOT 10

70,481 SQ. FT.

1.098 ACRES

EL PASO COUNTY RIGHT-OF-WAY

TRACT B

TRACT A

TRACT C

TRACT D

TRACT E

TRACT F

TRACT G

TRACT H

TRACT I

TRACT J

TRACT K

TRACT L

TRACT M

TRACT N

TRACT O

TRACT P

TRACT Q

TRACT R

TRACT S

TRACT T

TRACT U

TRACT V

TRACT W

TRACT X

TRACT Y

TRACT Z

TRACT AA

TRACT AB

TRACT AC

TRACT AD

TRACT AE

TRACT AF

TRACT AG

TRACT AH

TRACT AI

TRACT AJ

TRACT AK

TRACT AL

TRACT AM

TRACT AN

TRACT AO

TRACT AP

TRACT AQ

TRACT AR

TRACT AS

TRACT AT

TRACT AU

TRACT AV

TRACT AW

TRACT AX

TRACT AY

TRACT AZ

TRACT BA

TRACT BB

TRACT BC

TRACT BD

TRACT BE

TRACT BF

TRACT BG

TRACT BH

TRACT BI

TRACT BJ

TRACT BK

TRACT BL

TRACT BM

TRACT BN

TRACT BO

TRACT BP

TRACT BQ

TRACT BR

TRACT BS

TRACT BT

TRACT BU

TRACT BV

TRACT BW

TRACT BX

TRACT BY

TRACT BZ

TRACT CA

TRACT CB

TRACT CC

TRACT CD

TRACT CE

TRACT CF

TRACT CG

TRACT CH

TRACT CI

TRACT CJ

TRACT CK

TRACT CL

TRACT CM

TRACT CN

TRACT CO

TRACT CP

TRACT CQ

TRACT CR

TRACT CS

TRACT CT

TRACT CU

TRACT CV

TRACT CW

TRACT CX

TRACT CY

TRACT CZ

TRACT DA

TRACT DB

TRACT DC

TRACT DD

TRACT DE

TRACT DF

TRACT DG

TRACT DH

TRACT DI

TRACT DJ

TRACT DK

TRACT DL

TRACT DM

TRACT DN

TRACT DO

TRACT DP

TRACT DQ

TRACT DR

TRACT DS

TRACT DT

TRACT DU

TRACT DV

TRACT DW

TRACT DX

TRACT DY

TRACT DZ

TRACT EA

TRACT EB

TRACT EC

TRACT ED

TRACT EE

TRACT EF

TRACT EG

TRACT EH

TRACT EI

TRACT EJ

TRACT EK

TRACT EL

TRACT EM

TRACT EN

TRACT EO

TRACT EP

TRACT EQ

TRACT ER

TRACT ES

TRACT ET

TRACT EU

TRACT EV

TRACT EW

TRACT EX

TRACT EY

TRACT EZ

TRACT FA

TRACT FB

TRACT FC

TRACT FD

TRACT FE

TRACT FF

TRACT FG

TRACT FH

TRACT FI

TRACT FJ

TRACT FK

TRACT FL

TRACT FM

TRACT FN

TRACT FO

TRACT FP

TRACT FQ

TRACT FR

TRACT FS

TRACT FT

TRACT FU

TRACT FV

TRACT FW

TRACT FX

TRACT FY

TRACT FZ

TRACT GA

TRACT GB

TRACT GC

TRACT GD

TRACT GE

TRACT GF

TRACT GH

TRACT GI

TRACT GJ

TRACT GK

TRACT GL

TRACT GM

TRACT GN

TRACT GO

TRACT GP

TRACT GQ

TRACT GR

TRACT GS

TRACT GT

TRACT GU

TRACT GV

TRACT GW

TRACT GX

TRACT GY

TRACT GZ

TRACT HA

TRACT HB

TRACT HC

TRACT HD

TRACT HE

TRACT HF

TRACT HG

TRACT HI

TRACT HJ

TRACT HK

TRACT HL

TRACT HM

TRACT HN

TRACT HO

TRACT HP

TRACT HQ

TRACT HR

TRACT HS

TRACT HT

TRACT HU

TRACT HV

TRACT HW

TRACT HX

TRACT HY

TRACT HZ

TRACT IA

TRACT IB

TRACT IC

TRACT ID

TRACT IE

TRACT IF

TRACT IG

TRACT IH

TRACT II

TRACT IJ

TRACT IK

TRACT IL

TRACT IM

TRACT IN

TRACT IO

TRACT IP

TRACT IQ

TRACT IR

TRACT IS

TRACT IT

TRACT IU

TRACT IV

TRACT IW

TRACT IX

TRACT IY

TRACT IZ

TRACT JA

TRACT JB

TRACT JC

TRACT JD

TRACT JE

TRACT JF

TRACT JG

TRACT JH

TRACT JI

TRACT JJ

TRACT JK

TRACT JL

TRACT JM

TRACT JN

TRACT JO

TRACT JP

TRACT JQ

TRACT JR

TRACT JS

TRACT JT

TRACT JU

TRACT JV

TRACT JW

TRACT JX

TRACT JY

TRACT JZ

TRACT KA

TRACT KB

TRACT KC

TRACT KD

TRACT KE

TRACT KF

TRACT KG

TRACT KH

TRACT KI

TRACT KJ

TRACT KL

TRACT KM

TRACT KN

TRACT KO

TRACT KP

TRACT KQ

TRACT KR

TRACT KS

TRACT KT

TRACT KU

TRACT KV

TRACT KW

TRACT KX

TRACT KY

TRACT KZ

TRACT LA

TRACT LB

TRACT LC

TRACT LD

TRACT LE

TRACT LF

TRACT LG

TRACT LH

TRACT LI

TRACT LJ

TRACT LK

TRACT LL

TRACT LM

TRACT LN

TRACT LO

TRACT LP

TRACT LQ

TRACT LR

TRACT LS

TRACT LT

TRACT LU

TRACT LV

TRACT LW

TRACT LX

TRACT LY

TRACT LZ

TRACT MA

TRACT MB

TRACT MC

TRACT MD

TRACT ME

TRACT MF

TRACT MG

TRACT MH

TRACT MI

TRACT MJ

TRACT MK

TRACT ML

TRACT MM

TRACT MN

TRACT MO

TRACT MP

TRACT MQ

TRACT MR

TRACT MS

TRACT MT

TRACT MU

TRACT MV

TRACT MW

TRACT MX

TRACT MY

TRACT MZ

TRACT NA

TRACT NB

TRACT NC

TRACT ND

TRACT NE

TRACT NF

TRACT NG

TRACT NH

TRACT NI

TRACT NJ

TRACT NK

TRACT NL

TRACT NM

TRACT NN

TRACT NO

TRACT NP

TRACT NQ

TRACT NR

TRACT NS

TRACT NT

TRACT NU

TRACT NV

TRACT NW

TRACT NX

TRACT NY

TRACT NZ

TRACT OA

TRACT OB

TRACT OC

TRACT OD

TRACT OE

TRACT OF

TRACT OG

TRACT OH

TRACT OI

TRACT OJ

TRACT OK

TRACT OL

TRACT OM

TRACT ON

TRACT OO

TRACT OP

TRACT OQ

TRACT OR

TRACT OS

TRACT OT

TRACT OU

TRACT OV

TRACT OW

TRACT OX

TRACT OY

TRACT OZ

TRACT PA

TRACT PB

TRACT PC

TRACT PD

TRACT PE

TRACT PF

TRACT PG

TRACT PH

TRACT PI

TRACT PJ

TRACT PK

TRACT PL

TRACT PM

TRACT PN

TRACT PO

TRACT PP

TRACT PQ

TRACT PR

TRACT PS

TRACT PT

TRACT PU

TRACT PV

TRACT PW

TRACT PX

TRACT PY

TRACT PZ

TRACT QA

TRACT QB

TRACT QC

TRACT QD

TRACT QE

TRACT QF

TRACT QG

TRACT QH

TRACT QI

TRACT QJ

TRACT QK

TRACT QL

TRACT QM

TRACT QN

TRACT QO

TRACT QP

TRACT QQ

TRACT QR

TRACT QS

TRACT QT

TRACT QU

TRACT QV

TRACT QW

TRACT QX

TRACT QY

TRACT QZ

TRACT RA

TRACT RB

TRACT RC

TRACT RD

TRACT RE

TRACT RF

TRACT RG

TRACT RH

TRACT RI

TRACT RJ

TRACT RK

TRACT RL

TRACT RM

TRACT RN

TRACT RO

TRACT RP

TRACT RQ

TRACT RR

TRACT RS

TRACT RT

TRACT RU

TRACT RV

TRACT RW

TRACT RX

TRACT RY

TRACT RZ

TRACT SA

TRACT SB

TRACT SC

TRACT SD

TRACT SE

TRACT SF

TRACT SG

TRACT SH

TRACT SI

TRACT SJ

TRACT SK

TRACT SL

TRACT SM

TRACT SN

TRACT SO

TRACT SP

TRACT SQ

TRACT SR

TRACT SS

TRACT ST

TRACT SU

TRACT SV

TRACT SW

TRACT SX

TRACT SY

TRACT SZ

TRACT TA

TRACT TB

TRACT TC

TRACT TD

TRACT TE

TRACT TF

TRACT TG

TRACT TH

TRACT TI

TRACT TJ

TRACT TK

TRACT TL

TRACT TM

TRACT TN

TRACT TO

TRACT TP

TRACT TQ

TRACT TR

TRACT TS

TRACT TU

TRACT TV

TRACT TW

TRACT TX

TRACT TY

TRACT TZ

TRACT UA

TRACT UB

TRACT UC

TRACT UD

TRACT UE

TRACT UF

TRACT UG

TRACT UH

TRACT UI

TRACT UJ

TRACT UK

TRACT UL

TRACT UM

TRACT UN

TRACT UO

TRACT UP

TRACT UQ

TRACT UR

TRACT US

TRACT UT

TRACT UU

TRACT UV

TRACT UW

TRACT UX

TRACT UY

TRACT UZ

TRACT VA

TRACT VB

TRACT VC

TRACT VD

TRACT VE

TRACT VF

TRACT VG

TRACT VH

TRACT VI

TRACT VJ

TRACT VK

TRACT VL

TRACT VM

TRACT VN

TRACT VO

TRACT VP

TRACT VQ

TRACT VR

TRACT VS

TRACT VT

TRACT VU

TRACT VV

TRACT VW

TRACT VX

TRACT VY

TRACT VZ

TRACT WA

TRACT WB

TRACT WC

TRACT WD

TRACT WE

TRACT WF

TRACT WG

TRACT WH

TRACT WI

TRACT WJ

TRACT WK

TRACT WL

TRACT WM

TRACT WN

TRACT WO

TRACT WP

TRACT WQ

TRACT WR

TRACT WS

TRACT WT

TRACT WU

TRACT WV

TRACT WW

TRACT WX

TRACT WY

TRACT WZ

TRACT XA

TRACT XB

TRACT XC

TRACT XD

TRACT XE

TRACT XF

TRACT XG

TRACT XH

TRACT XI

TRACT XJ

TRACT XK

TRACT XL

TRACT XM

TRACT XN

TRACT XO

TRACT XP

TRACT XQ

TRACT XR

TRACT XS

TRACT XT

TRACT XU

TRACT XV

TRACT XW

TRACT XX

TRACT XY

TRACT XZ

TRACT YA

TRACT YB

TRACT YC

TRACT YD

TRACT YE

TRACT YF

TRACT YG

TRACT YH

TRACT YI

TRACT YJ

TRACT YK

TRACT YL

TRACT YM

TRACT YN

TRACT YO

TRACT YP

TRACT YQ

TRACT YR

TRACT YS

TRACT YT

TRACT YU

TRACT YV

TRACT YW

TRACT YX

TRACT YY

TRACT YZ

TRACT ZA

TRACT ZB

TRACT ZC

TRACT ZD

TRACT ZE

TRACT ZF

TRACT ZG

TRACT ZH

TRACT ZI

TRACT ZJ

TRACT ZK

TRACT ZL

TRACT ZM

TRACT ZN

TRACT ZO

TRACT ZP

TRACT ZQ

TRACT ZR

TRACT ZS

TRACT ZT

TRACT ZU

TRACT ZV

TRACT ZW

TRACT ZX

TRACT ZY

TRACT ZZ

NOTE:
ANY PROPOSED LIGHT FIXTURES INSTALLED ON PRIVATE PROPERTY, ADJACENT TO THE PUBLIC ROW, SHALL BE ORIENTED IN SUCH A MANNER OR LIMITED IN LUMEN OUTPUT TO PREVENT GLARE PROBLEMS AND SHALL NOT EXCEED NATIONAL I.E.S. LIGHTING STANDARDS FOR DISABILITY GLARE.

LOT 10

70,481 SQ. FT.

1.098 ACRES

EL PASO COUNTY RIGHT-OF-WAY

TRACT B

TRACT A

TRACT C

TRACT D

TRACT E

TRACT F

TRACT G

TRACT H

TRACT I

TRACT J

TRACT K

TRACT L

TRACT M

TRACT N

TRACT O

TRACT P

TRACT Q

TRACT R

TRACT S

TRACT T

TRACT U

TRACT V

TRACT W

TRACT X

TRACT Y

TRACT Z

TRACT AA

TRACT AB

TRACT AC

