

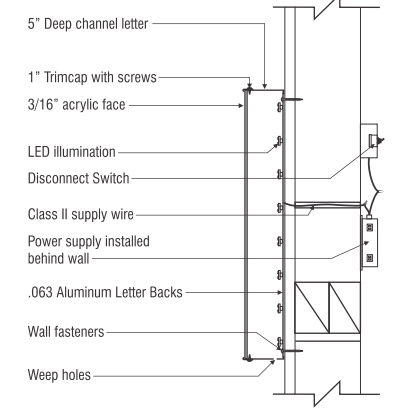
45'

MERIDIAN STORAGE 3'

135 SF, 300 SF ALLOWED

**INTERNALLY ILLUMINATED CHANNEL LETTERS**  
 .063 FABRICATED METAL CHANNEL LETTERS  
 5" BLACK RETURNS  
 3/16" WHITE ACRYLIC FACES  
 1" BLACK TRIMCAP  
 INTERNALLY ILLUMINATED WITH WHITE LED  
 DIRECT MOUNTED FLUSH TO BUILDING  
 U.L. APPROVED

Remote Mount Detail



**SPECTRUM**  
 LIGHTING, SIGN & ELECTRICAL  
 COMPANY  
 (719) 520-5167 FAX (719) 520-5902

Copyright © 2009  
 This drawing is provided for the purpose of illustrating the proposed project. Unauthorized use, copying, scanning or sharing is strictly prohibited and protected by law.  
 Electrical hookup by others.  
 Electrical requirements: 120V (or as indicated)  
 All landscaping by others

This conceptual illustration is designed to provide a view of how the sign might look in it's chosen location. Due to variables in digital photography, architectural renderings and unforeseen structural obstacles, the ratio of the finished sign to the area it is installed in may appear slightly different from the illustration. Colors shown are representative of the actual color code chosen. Variables in monitors, printers, inks and paper will alter how these colors appear on the drawing. Please refer to the actual color codes prior to approval.

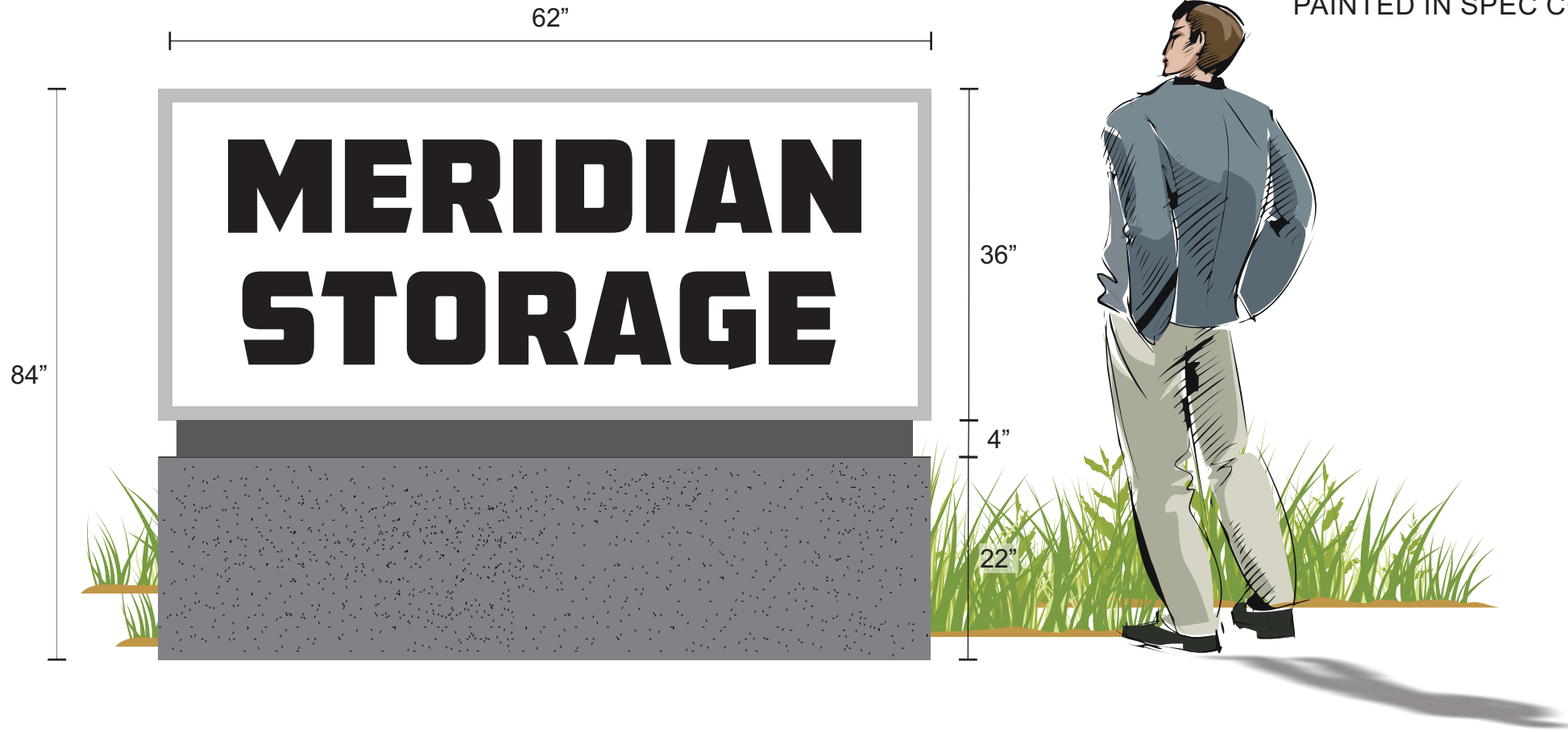
Customer Information  
 Business Name: Meridian Storage  
 Project Name: Channel Letters  
 Location Address: 11750 Owl Place, Peyton, CO

Customer Approval  
 Name and Title \_\_\_\_\_  
 Authorization \_\_\_\_\_ Date \_\_\_\_\_

ISA  
 INTERNATIONAL SIGN ASSOCIATION  
 UL Underwriters Laboratories Inc.

INTERNALLY ILLUMINATED DOUBLE FACED  
MONUMENT SIGN

.063 FABRICATED METAL CABINET  
PAINTED IN SPEC COLOR TBD  
TENANT PANELS 3/16" WHITE ACRYLIC FACES  
VINYL LETTERING/GRAPHICS TBD  
RETAINERS PAINTED TO MATCH CABINET  
METAL DIVIDER BARS PAINTED TO MATCH CABINET  
INTERNALLY ILLUMINATED WITH WHITE LED  
.063 FABRICATED METAL BASE  
PAINTED IN SPEC COLOR TBD WITH STUCCO FINISH



**SPECTRUM**  
LIGHTING, SIGN & ELECTRICAL  
COMPANY

(719) 520-5167 FAX (719) 520-5902

**Copyright © 2009**

This drawing is provided for the purpose of illustrating the proposed project. Unauthorized use, copying, scanning or sharing is strictly prohibited and protected by law.

Electrical hookup by others.  
Electrical requirements: 120V (or as indicated)  
All landscaping by others

This conceptual illustration is designed to provide a view of how the sign might look in it's chosen location. Due to variables in digital photography, architectural renderings and unforeseen structural obstacles, the ratio of the finished sign to the area it is installed in may appear slightly different from the illustration. Colors shown are representative of the actual color code chosen. Variables in monitors, printers, inks and paper will alter how these colors appear on the drawing. Please refer to the actual color codes prior to approval.

**Customer Information**

Business Name: Meridian Storage

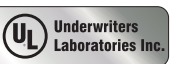
Project Name: Monument Sign

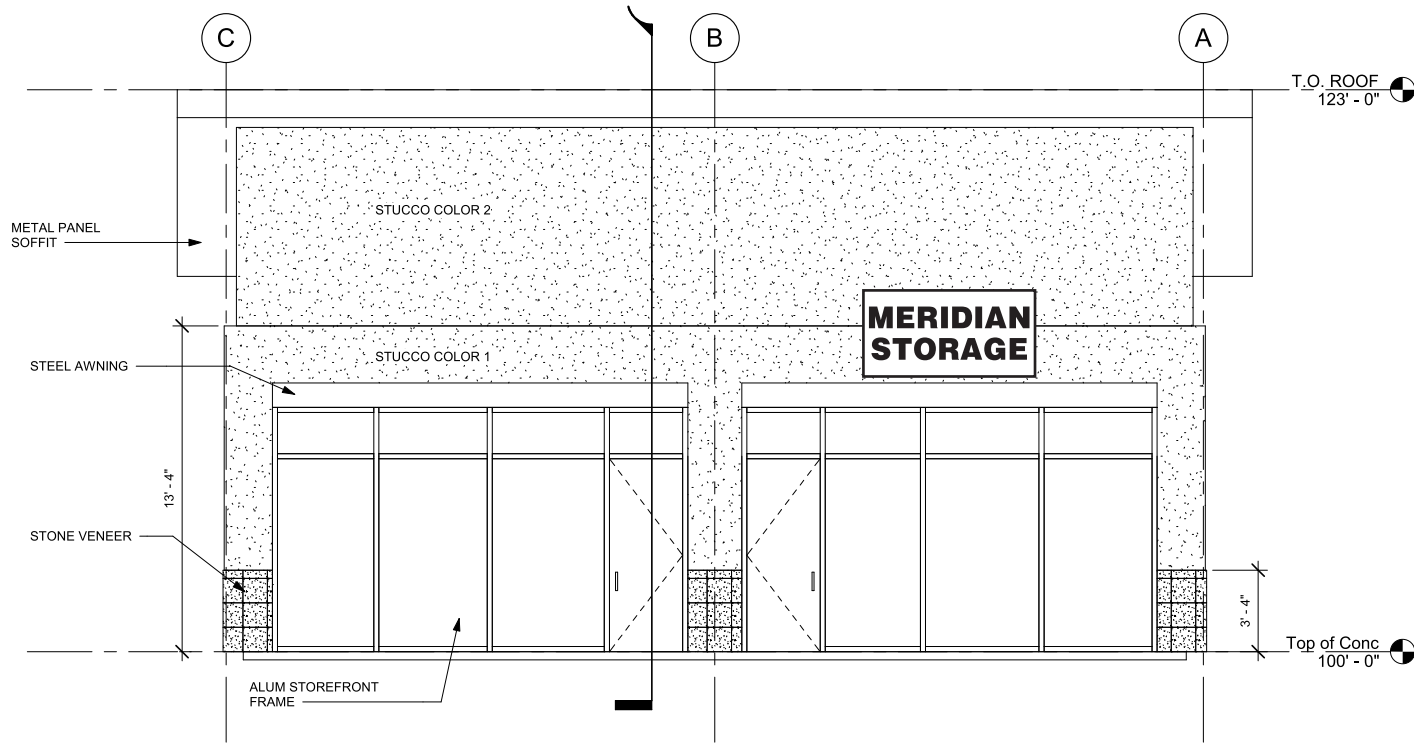
Location Address: 11750 Owl Place, Peyton, CO

**Customer Approval**

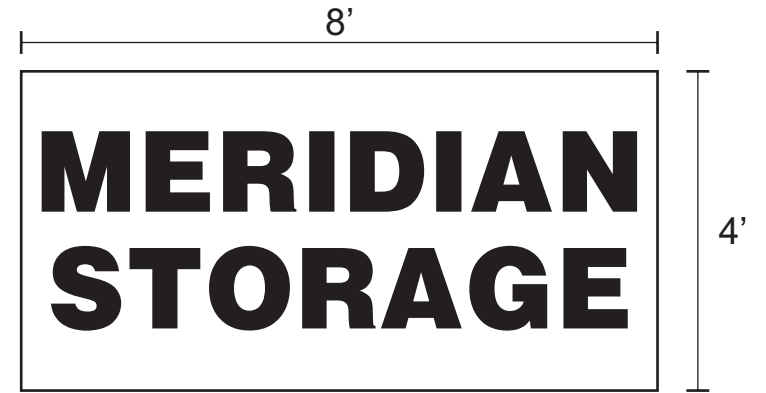
Name and Title \_\_\_\_\_

Authorization \_\_\_\_\_ Date \_\_\_\_\_





② West Elevation



NON-ILLUMINATED SIGN PANEL  
 ALUMINUM COMPOSITE PANEL  
 WITH VINYL GRAPHICS



(719) 520-5167 FAX (719) 520-5902

Copyright © 2009

This drawing is provided for the purpose of illustrating the proposed project. Unauthorized use, copying, scanning or sharing is strictly prohibited and protected by law.

Electrical hookup by others.  
 Electrical requirements: 120V (or as indicated)  
 All landscaping by others

This conceptual illustration is designed to provide a view of how the sign might look in its chosen location. Due to variables in digital photography, architectural renderings and unforeseen structural obstacles, the ratio of the finished sign to the area it is installed in may appear slightly different from the illustration. Colors shown are representative of the actual color code chosen. Variables in monitors, printers, inks and paper will alter how these colors appear on the drawing. Please refer to the actual color codes prior to approval.

Customer Information

Business Name: Meridian Storage

Project Name: Entry Sign

Location Address: 11750 Owl Place, Peyton, CO

Customer Approval

Name and Title \_\_\_\_\_

Authorization \_\_\_\_\_ Date \_\_\_\_\_

