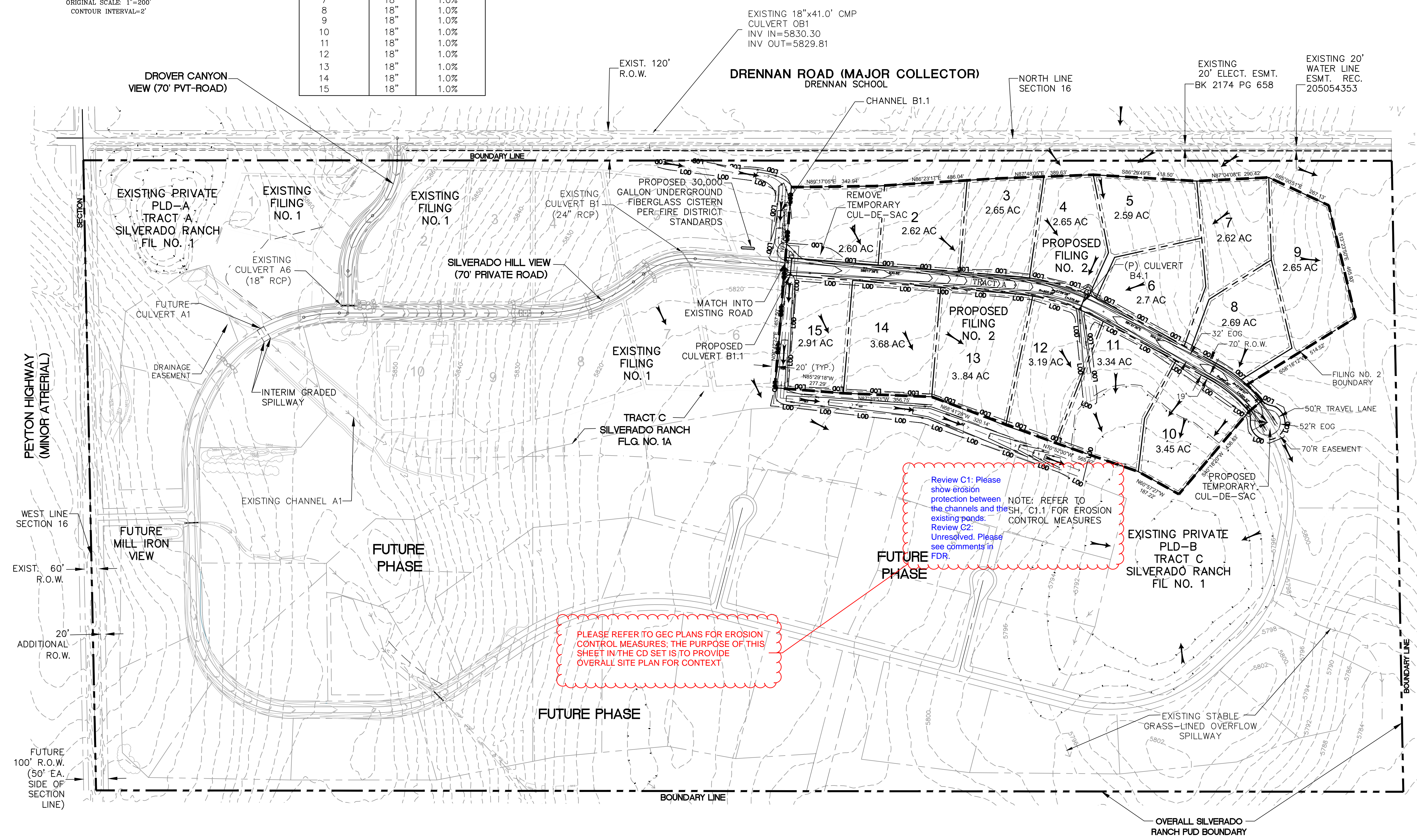


DRIVEWAY CULVERT TABLE		
LOT NO.	SIZE (DIA.)	MIN. SLOPE
1	18"	1.0%
2	18"	1.0%
3	18"	1.0%
4	18"	1.0%
5	18"	1.0%
6	18"	1.0%
7	18"	1.0%
8	18"	1.0%
9	18"	1.0%
10	18"	1.0%
11	18"	1.0%
12	18"	1.0%
13	18"	1.0%
14	18"	1.0%
15	18"	1.0%

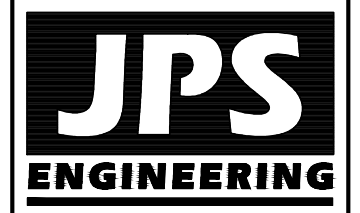
JPS responses to comments in red text
(County review comments in blue text)



PLEASE REFER TO GEC PLANS FOR EROSION CONTROL MEASURES; THE PURPOSE OF THIS SHEET IN THE CD SET IS TO PROVIDE OVERALL SITE PLAN FOR CONTEXT

Review C1: Please show erosion protection between the channels and the existing ponds.
Review C2: Unresolved. Please see comments in FDR.
NOTE: REFER TO SH. C1.1 FOR EROSION CONTROL MEASURES

SILVERADO RANCH FILING NO. 2



19 E. Willamette Ave.
Colorado Springs, CO 80903
PH: 719-477-9429
FAX: 719-471-0766

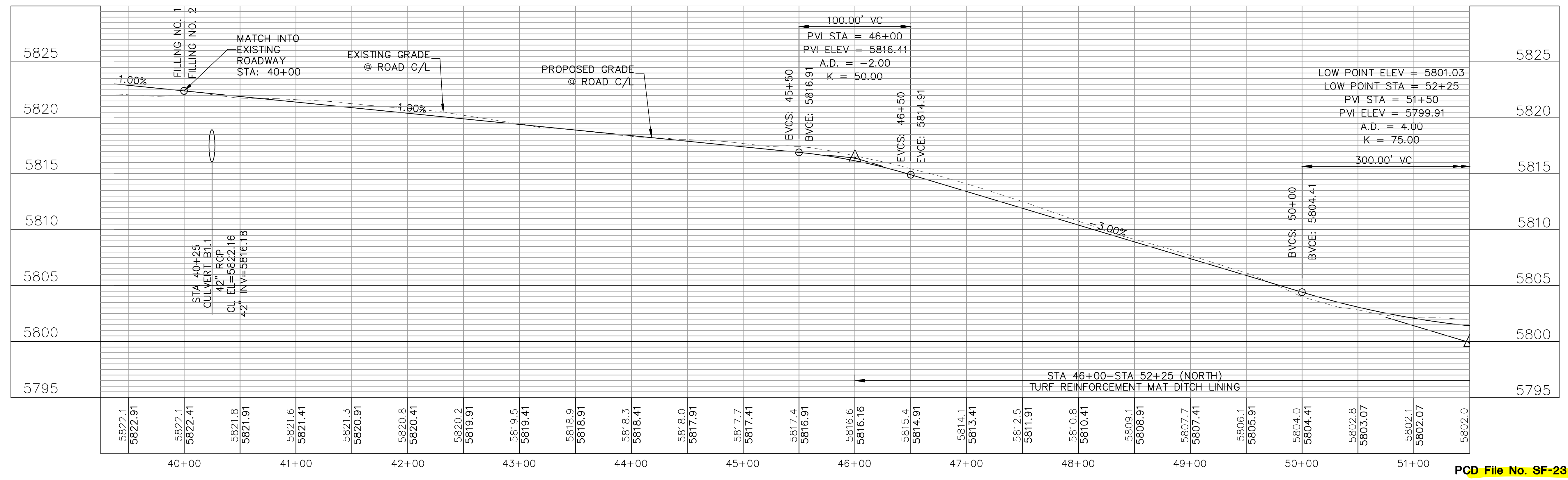
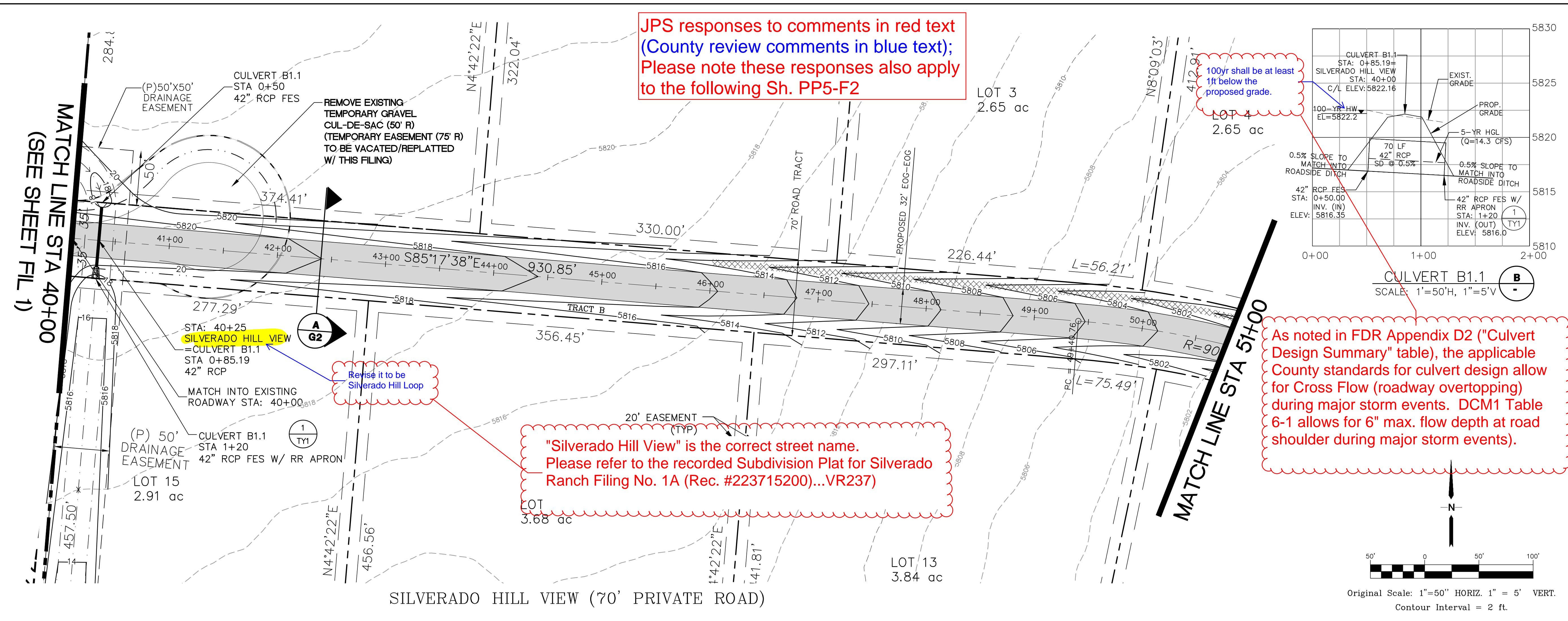
CALL UTILITY NOTIFICATION CENTER OF COLORADO
1-800-922-1987
CALL 2-BUSINESS DAYS IN ADVANCE BEFORE YOU DIG, GRADE, OR EXCAVATE FOR THE MARKING OF UNDERGROUND MEMBER UTILITIES.

No.	REVISION	BY	DATE
A	FINAL PLAT SUBMITTAL	JPS	02/01/24
B	EPC COMMENTS	JPS	06/07/24

OVERALL SITE PLAN

HORIZ. SCALE: 1"=200'	DRAWN: MSP
VERT. SCALE: N/A	DESIGNED: JPS
SURVEYED: LWA	CHECKED: JPS
CREATED: 9/21/22	LAST MODIFIED: 06/07/24
PROJECT NO: 080603	MODIFIED BY: PV
SHEET:	



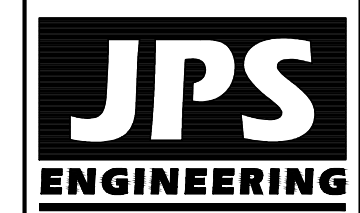


SILVERADO RANCH FILING NO. 2

SILVERADO HILL VIEW NORTH

PLAN AND PROFILE

STA: 40+00 TO 51+00



19 E. Willamette Ave.
 Colorado Springs, CO
 80903
 PH: 719-477-9429
 FAX: 719-471-0766
 www.jpsegr.com



CALL UTILITY NOTIFICATION
 CENTER OF COLORADO
 1-800-922-1987
 CALL 2-BUSINESS DAYS IN ADVANCE
 BEFORE ANY EXCAVATION OR
 BEFORE THE MARKING OF UNDERGROUND
 MEMBER UTILITIES.

No.	REVISION	BY	DATE

SILVERADO HILL VIEW NORTH

PLAN AND PROFILE

STA: 40+00 TO 51+00

HORIZ. SCALE: 1"=50'	DRAWN: MSP
VERT. SCALE: 1"=5'	DESIGNED: JPS
SURVEYED: LWA	CHECKED: JPS
CREATED: 9/21/22	LAST MODIFIED: 06/07/24
PROJECT NO: 080603	MODIFIED BY: PV
SHEET:	