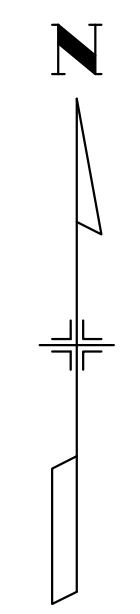
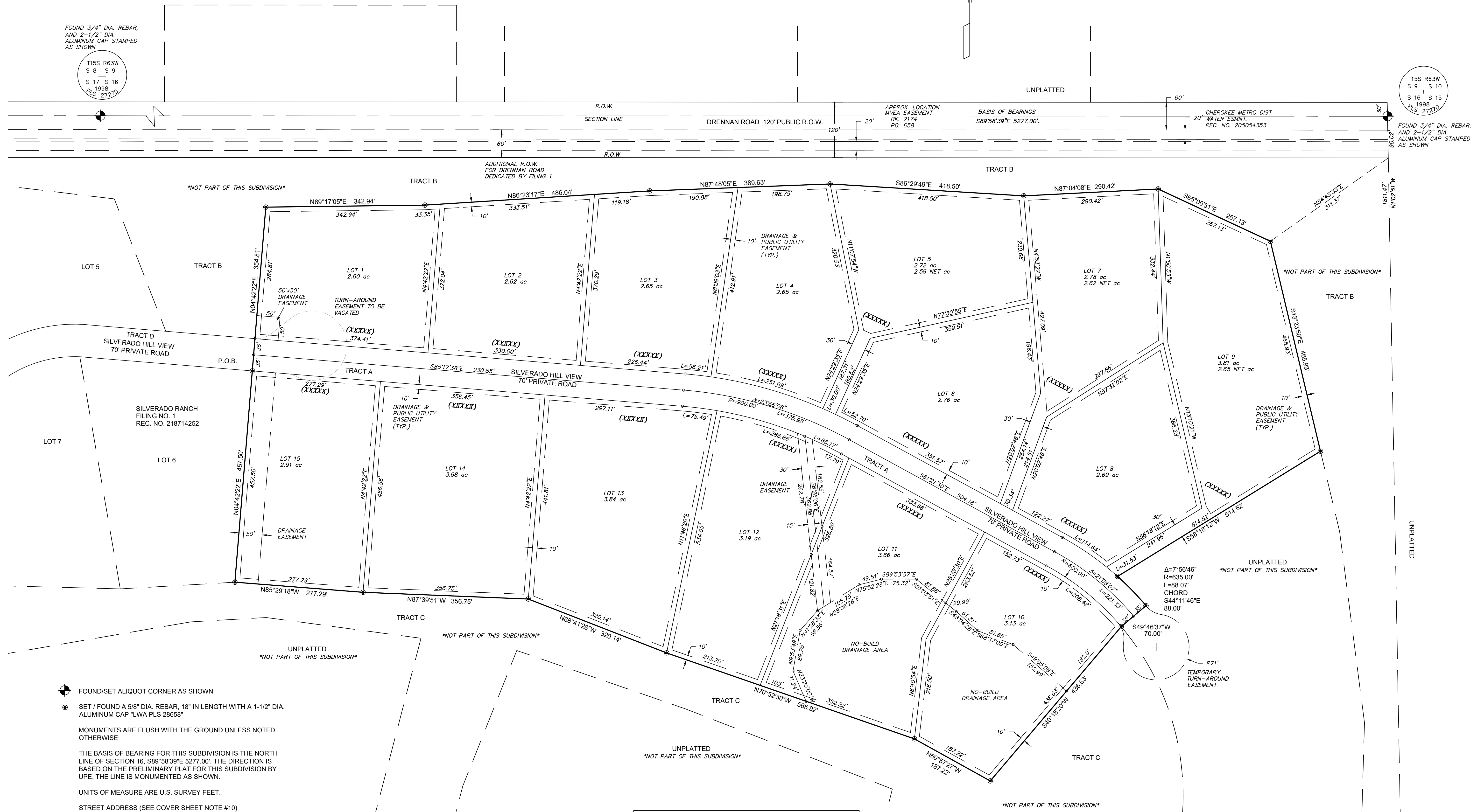
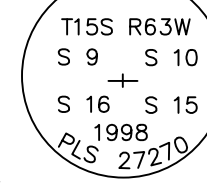
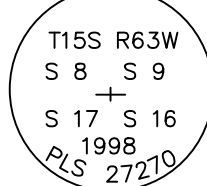


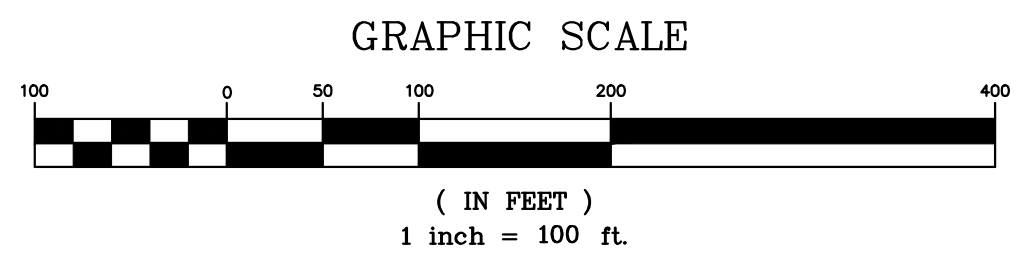
SILVERADO RANCH FILING NO. 2
 IN THE NORTHEAST QUARTER OF SECTION 16, T15S, R63W, 6th P.M.
 EL PASO COUNTY, COLORADO



FOUND 3/4" DIA. REBAR,
 AND 2-1/2" DIA.
 ALUMINUM CAP STAMPED
 AS SHOWN



● FOUND/SET ALIQUOT CORNER AS SHOWN
 ● SET / FOUND A 5/8" DIA. REBAR, 18" IN LENGTH WITH A 1-1/2" DIA. ALUMINUM CAP "LWA PLS 28658"
 MONUMENTS ARE FLUSH WITH THE GROUND UNLESS NOTED OTHERWISE
 THE BASIS OF BEARING FOR THIS SUBDIVISION IS THE NORTH LINE OF SECTION 16, S89°58'39"E 5277.00'. THE DIRECTION IS BASED ON THE PRELIMINARY PLAT FOR THIS SUBDIVISION BY UPE. THE LINE IS MONUMENTED AS SHOWN.
 UNITS OF MEASURE ARE U.S. SURVEY FEET.
 STREET ADDRESS (SEE COVER SHEET NOTE #10)



CURVE TABLE					
CURVE	DELTA	RADIUS	LENGTH	CHORD BEARING	CHORD LENGTH
C1	3°26'40"	935.00	56.21	S83°14'17"E	56.20
C2	15°25'23"	935.00	251.69	S74°08'15"E	250.93
C3	1°50'18"	935.00	30.00	S65°30'25"E	30.00
C4	3°17'46"	935.00	52.70	S62°58'23"E	52.69
C5	10°20'39"	635.00	114.64	S56°11'10"E	114.49
C6	2°50'41"	635.00	31.53	S49°35'30"E	31.53
C7	21°8'7"	865.00	208.42	S50°47'27"E	207.24
C8	18°56'5"	865.00	285.86	S70°49'33"E	284.56
C9	5°0'2"	865.00	75.49	S82°47'37"E	75.47

TRACT DEDICATION TABLE			
TRACT	AREA	USE	OWNERSHIP/MAINTENANCE
A	3.27 ac.	PRIVATE ROAD - SILVERADO HILL VIEW	SILVERADO RANCH HOA (SEE NOTES #25 & 26)

"NOTICE: ACCORDING TO COLORADO LAW YOU MUST COMMENCE ANY LEGAL ACTION BASED UPON ANY DEFECT IN THIS SURVEY WITHIN THREE YEARS AFTER YOU FIRST DISCOVER SUCH DEFECT. IN NO EVENT MAY ANY ACTION BASED UPON ANY DEFECT IN THIS SURVEY BE COMMENCED MORE THAN TEN YEARS FROM THE DATE OF THE CERTIFICATION SHOWN HEREON."

PREPARED BY
LWA LAND SURVEYING, INC.
 953 EAST FILLMORE STREET
 COLORADO SPRINGS, COLORADO 80907
 Phone (719) 636-5179

REVISED 5-16-24
 SILVERADO RANCH
 JANUARY 9, 2024
 PROJECT 16093
 SHEET 2 OF 2