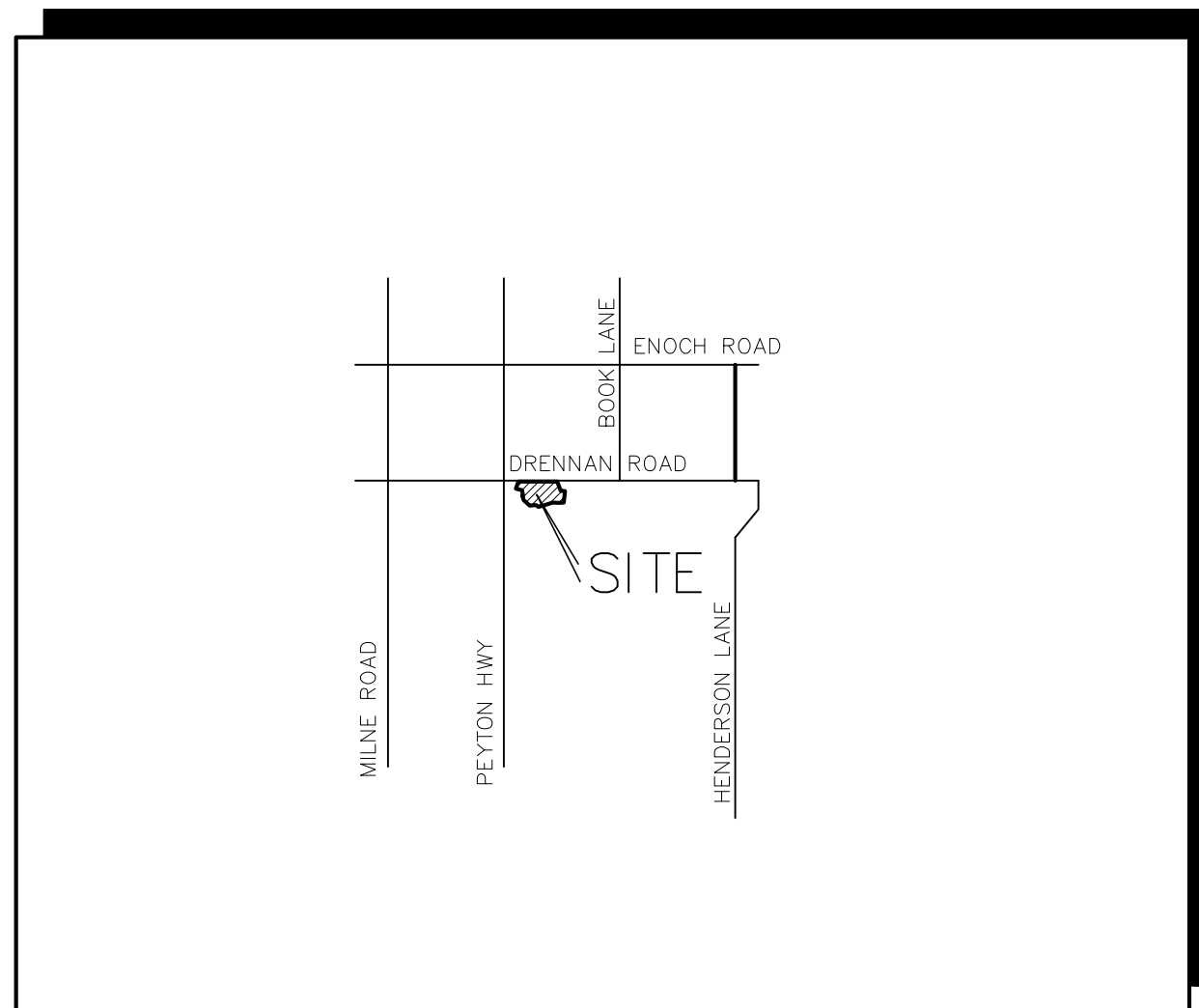


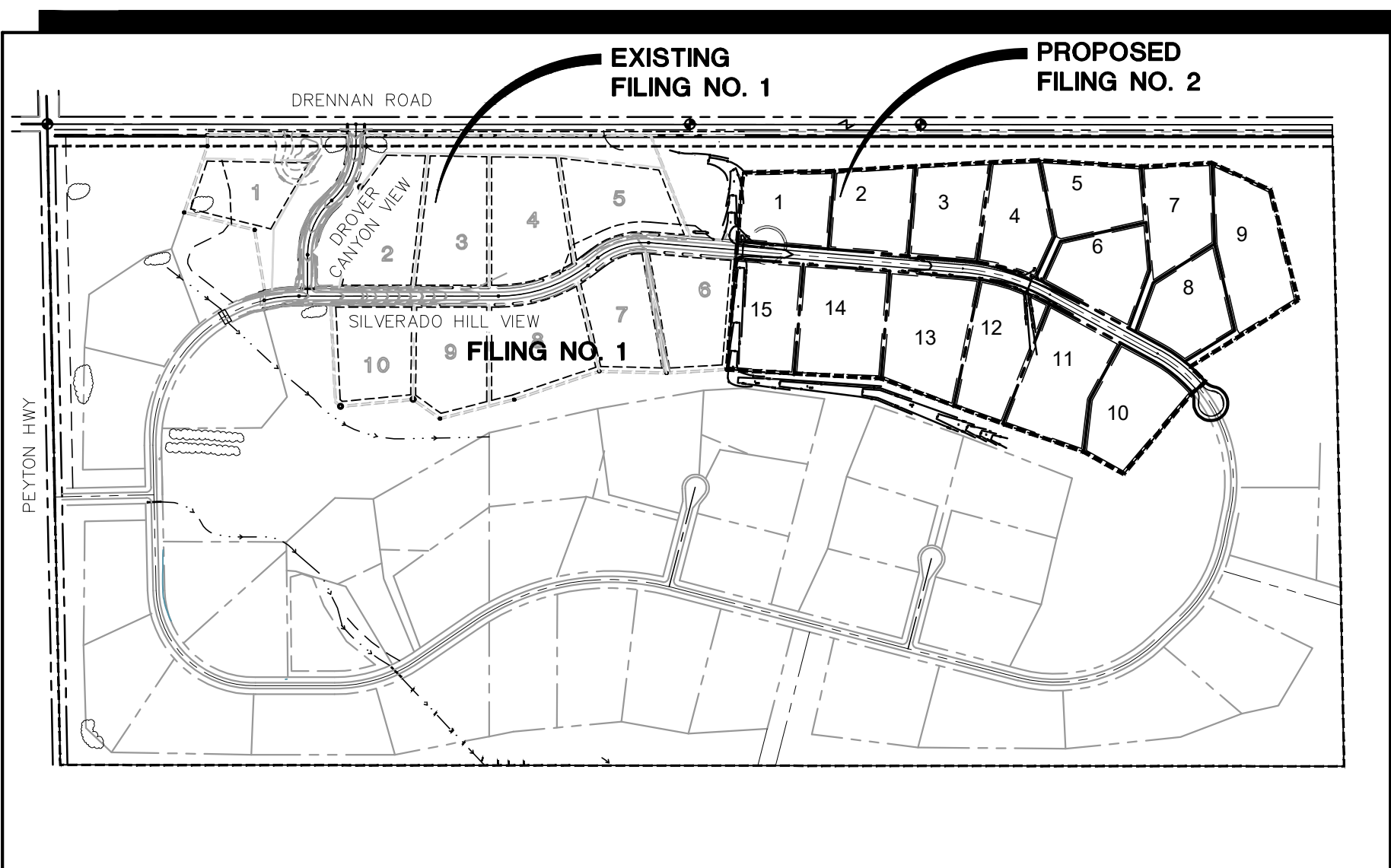
# SILVERADO RANCH FILING NO. 2

## Grading & Erosion Control Plans

### El Paso County, Colorado



VICINITY MAP  
NOT TO SCALE



SITE MAP  
NOT TO SCALE

NOTE: NOTWITHSTANDING ANYTHING DEPICTED IN THESE PLANS IN WORDS OR GRAPHIC REPRESENTATION, ALL DESIGN AND CONSTRUCTION RELATED TO ROADS, STORM DRAINAGE AND EROSION CONTROL SHALL CONFORM TO THE STANDARDS AND REQUIREMENTS OF THE MOST RECENT VERSION OF THE RELEVANT ADOPTED EL PASO COUNTY STANDARDS, INCLUDING THE LAND DEVELOPMENT CODE, THE ENGINEERING CRITERIA MANUAL, THE DRAINAGE CRITERIA MANUAL, AND THE DRAINAGE CRITERIA MANUAL VOLUME 2. ANY DEVIATIONS FROM REGULATIONS AND STANDARDS MUST BE REQUESTED AND APPROVED IN WRITING TO BE ACCEPTABLE.

**BASIS OF BEARING:**  
THE BASIS OF BEARING FOR THIS SUBDIVISION IS THE NORTH LINE OF SECTION 16, S89°58'39"E 5277.00' FROM THE NORTHWEST CORNER SECTION 16 TO THE NORTHEAST CORNER OF SECTION 16.

◆ **BENCHMARK:**  
USGS BRASS CAP 11 AJK 5752  
LOCATED IN THE N.W. CORNER OF  
THE INTERSECTION OF ELLICOTT  
HIGHWAY AND DRENNAN ROAD  
ELEV = 5755.00-NAVD 88

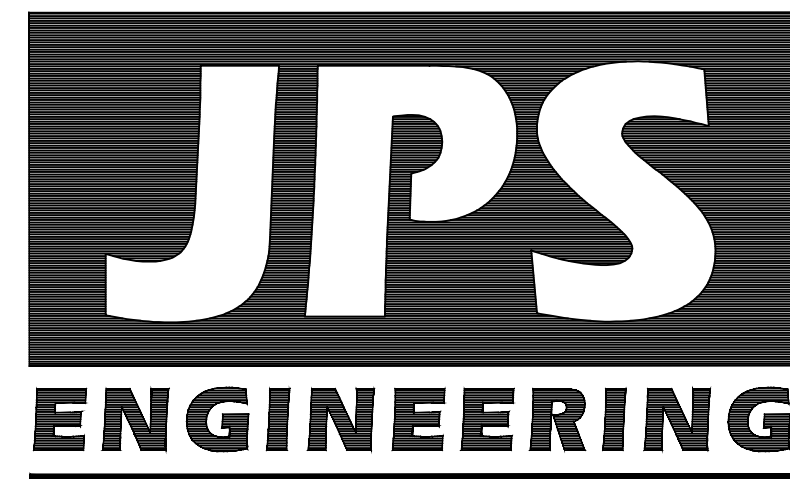
#### AGENCIES/CONTACTS

DEVELOPER:	SILVERADO RANCH, INC. 18911 CHERRY SPRINGS RANCH DRIVE MONUMENT, CO 80132 MR. STAN SEARLE (719) 481-3735	GAS DEPARTMENT:	BLACK HILLS ENERGY MR. SEBASTIAN SCHWENDER (719) 359-3176
CIVIL ENGINEER:	JPS ENGINEERING, INC. 19 E. WILLAMETTE AVENUE COLORADO SPRINGS, CO 80903 MR. JOHN P. SCHWAB, P.E. (719) 477-9429	ELECTRIC DEPARTMENT:	MOUNTAIN VIEW ELECTRIC ASSOCIATION 11140 E. WOODMEN ROAD COLORADO SPRINGS, CO 80908 MR. DAVE WALDNER (719) 495-2283
LOCAL ROADS & DRAINAGE:	EL PASO COUNTY PCO 2880 INTERNATIONAL CIRCLE COLORADO SPRINGS, CO 80910 (719) 520-7877	TELEPHONE COMPANY:	QWEST COMMUNICATIONS (LOCATORS) (800) 922-1987  A.T. & T. (LOCATORS) (719) 635-3674
		FIRE DEPARTMENT:	ELLCOTT FIRE DISTRICT FIRE MARSHAL (719) 683-7323

PREPARED FOR:

**SILVERADO RANCH, INC.**  
18911 Cherry Springs Ranch Drive  
Monument, Colorado 80132

PREPARED BY:



19 East Willamette Avenue  
Colorado Springs, Colorado 80903  
June, 2024

Please update the GEC plan to match the FDR whenever changes are made to the FDR. This comment stays unresolved until no changes being made on the drainage report.

#### SHEET INDEX

CO.1	GEC TITLE SHEET
TY1	TYPICAL SECTIONS & DETAILS
C1	OVERALL SITE PLAN
C1.1	GRADING & EROSION CONTROL PLAN
C2.1	EROSION CONTROL NOTES & DETAILS
C2.2	EROSION CONTROL DETAILS

#### ENGINEER'S STATEMENT:

THIS GRADING AND EROSION CONTROL PLAN WAS PREPARED UNDER MY DIRECTION AND SUPERVISION AND IS CORRECT TO THE BEST OF MY KNOWLEDGE AND BELIEF. SAID PLAN HAS BEEN PREPARED ACCORDING TO THE CRITERIA ESTABLISHED BY THE COUNTY FOR GRADING AND EROSION CONTROL PLANS. I ACCEPT RESPONSIBILITY FOR LIABILITY CAUSED BY NEGLIGENT ACTS, ERRORS OR OMISSIONS ON MY PART IN PREPARATING THIS PLAN.

JOHN P. SCHWAB, P.E. #29891 \_\_\_\_\_ DATE \_\_\_\_\_

#### OWNER / DEVELOPER'S STATEMENT:

I, THE OWNER / DEVELOPER HAVE READ AND WILL COMPLY WITH THE REQUIREMENTS OF THE GRADING AND EROSION CONTROL PLAN.

SILVERADO RANCH, INC. \_\_\_\_\_ DATE \_\_\_\_\_  
18911 CHERRY SPRINGS RANCH DRIVE  
MONUMENT, COLORADO 80132

#### EL PASO COUNTY:

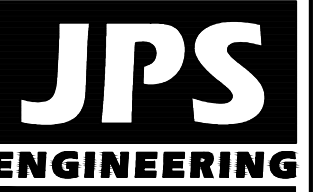
COUNTY PLAN REVIEW IS PROVIDED ONLY FOR GENERAL CONFORMANCE WITH COUNTY DESIGN CRITERIA. THE COUNTY IS NOT RESPONSIBLE FOR THE ACCURACY AND ADEQUACY OF THE DESIGN, DIMENSIONS, AND/OR ELEVATIONS WHICH SHALL BE CONFIRMED AT THE JOB SITE. THE COUNTY THROUGH THE APPROVAL OF THIS DOCUMENT ASSUMES NO RESPONSIBILITY FOR COMPLETENESS AND/OR ACCURACY OF THIS DOCUMENT.

FILED IN ACCORDANCE WITH THE REQUIREMENTS OF THE EL PASO COUNTY LAND DEVELOPMENT CODE, DRAINAGE CRITERIA MANUAL, VOLUMES 1 AND 2, AND ENGINEERING CRITERIA MANUAL AS AMENDED.

IN ACCORDANCE WITH ECM SECTION 1.12, THESE CONSTRUCTION DOCUMENTS WILL BE VALID FOR CONSTRUCTION FOR A PERIOD OF 2 YEARS. IF CONSTRUCTION HAS NOT STARTED WITHIN THOSE 2 YEARS, THE PLANS WILL NEED TO BE RESUBMITTED FOR APPROVAL, INCLUDING PAYMENT OF REVIEW FEES AT THE PLANNING AND COMMUNITY DEVELOPEMENT DIRECTORS DISCRETION.

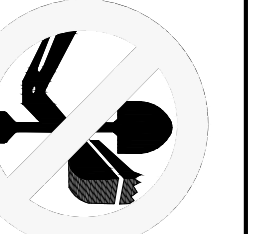
JOSHUA PALMER, P.E. \_\_\_\_\_ DATE \_\_\_\_\_  
COUNTY ENGINEER / ECM ADMINISTRATOR

PCD FILE NO. SF-246



19 E. Willamette Ave.  
Colorado Springs, CO  
80903

PH: 719-477-9429  
FAX: 719-471-0766  
www.jsengr.com



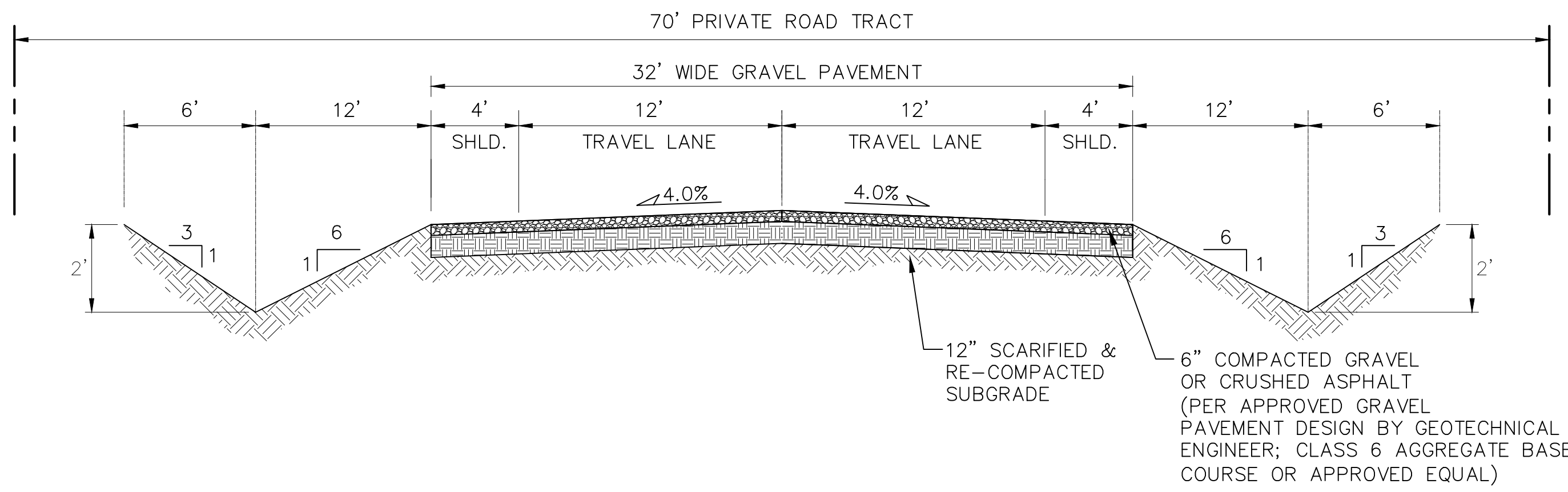
CALL UTILITY NOTIFICATION  
CENTER OF COLORADO  
1-800-922-1987  
CALL 2-BUSINESS DAYS IN ADVANCE  
BEFORE YOU DIG, GRADE, OR EXCAVATE  
FOR THE LOCATION OF UNDERGROUND  
MEMBER UTILITIES.

SILVERADO RANCH FILING NO. 2

GEC TITLE SHEET

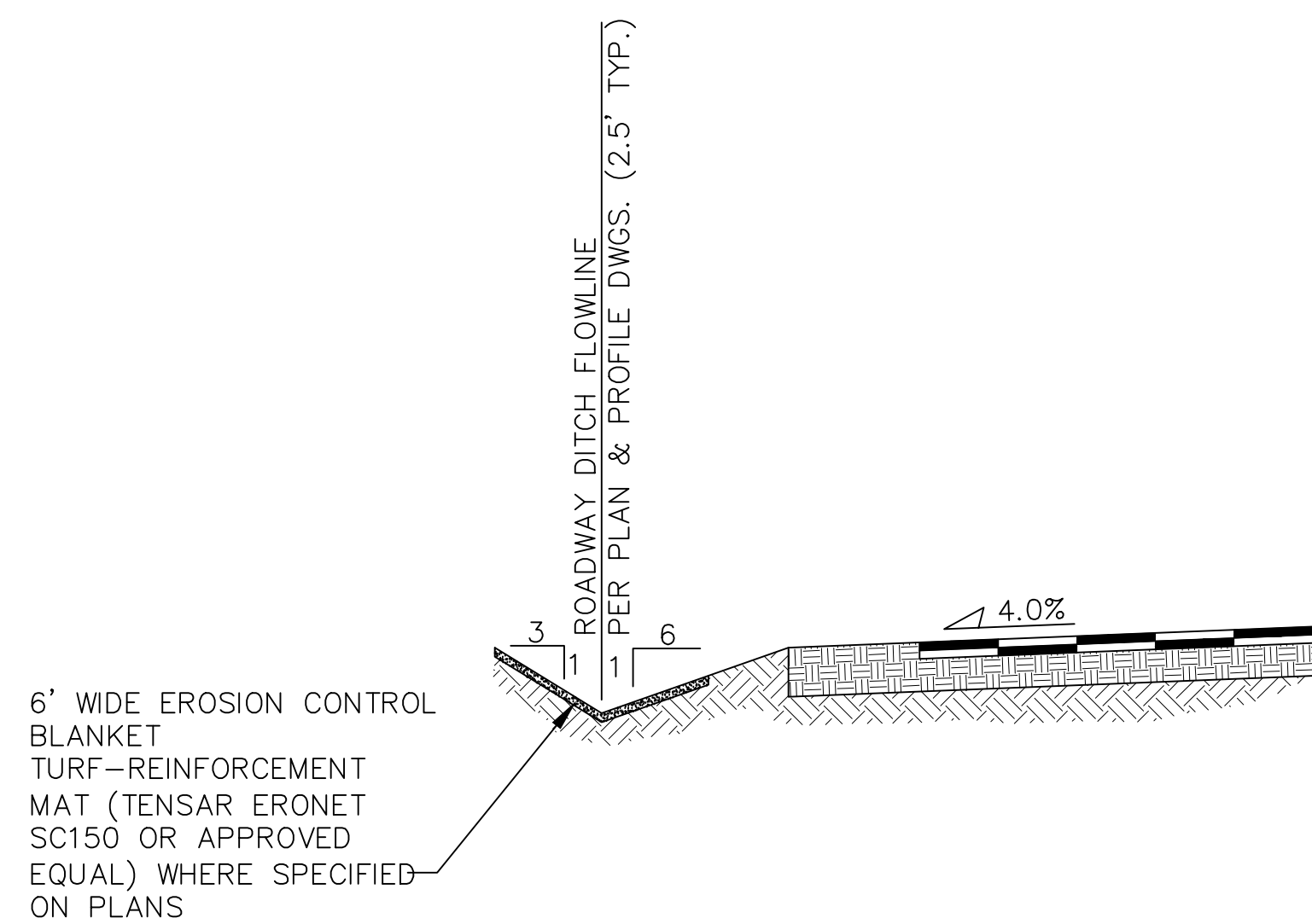
HORIZ. SCALE:	NA	DRAWN:	MSP
VERT. SCALE:	NA	DESIGNED:	JPS
SURVEYED:	LWA	CHECKED:	JPS
CREATED:	9/21/22	LAST MODIFIED:	06/07/24
PROJECT NO:	080603	MODIFIED BY:	PV

C0.1

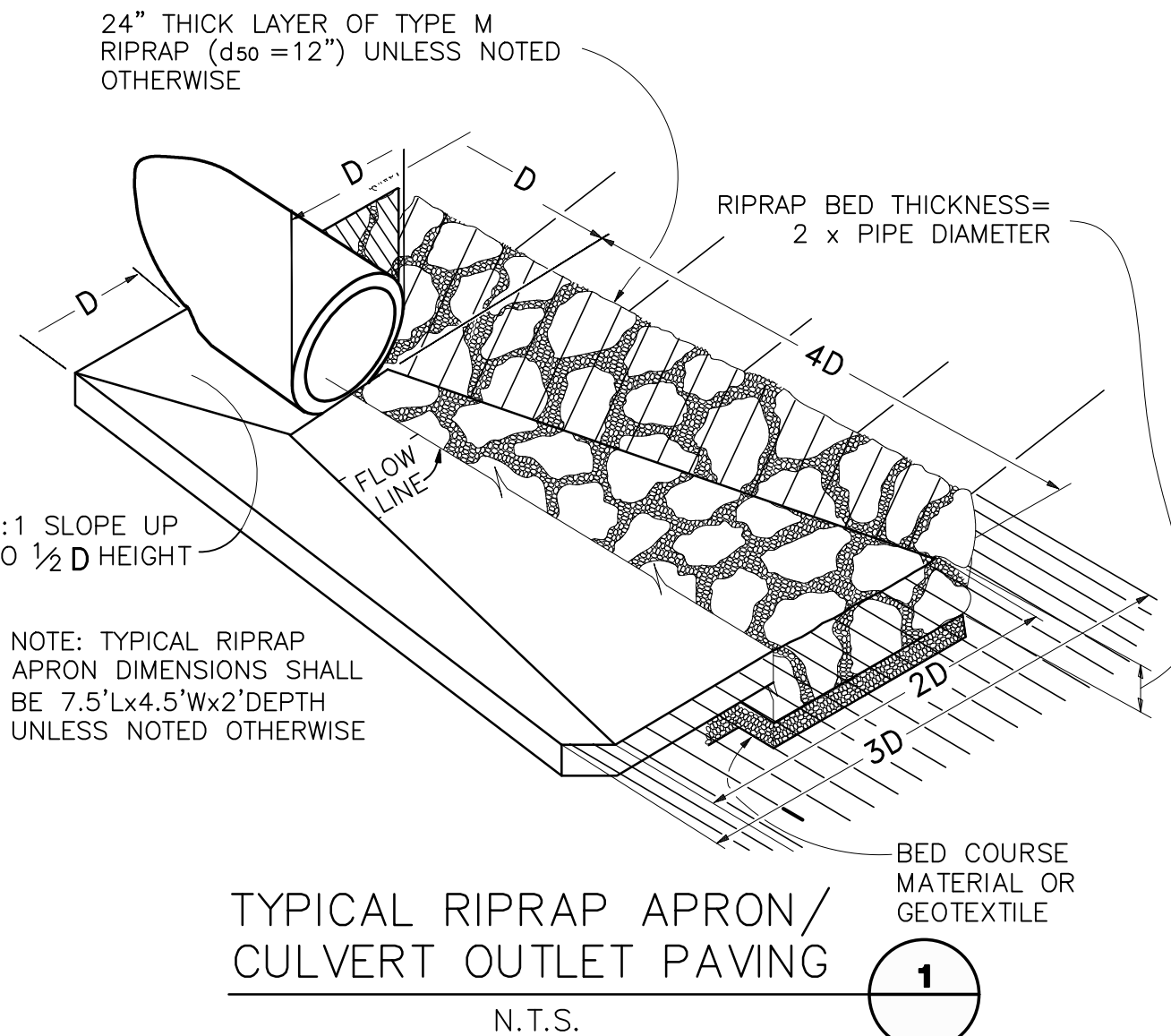


TYPICAL RURAL GRAVEL LOCAL ROADWAY SECTION (PRIVATE) (A)

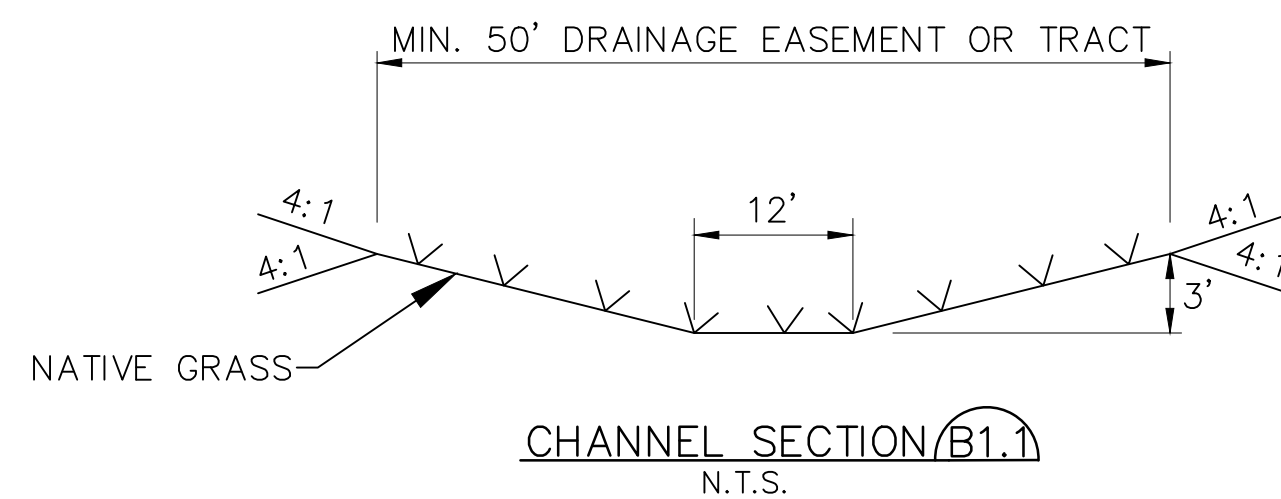
SCALE: 1"=5'H  
1"=2.5'V



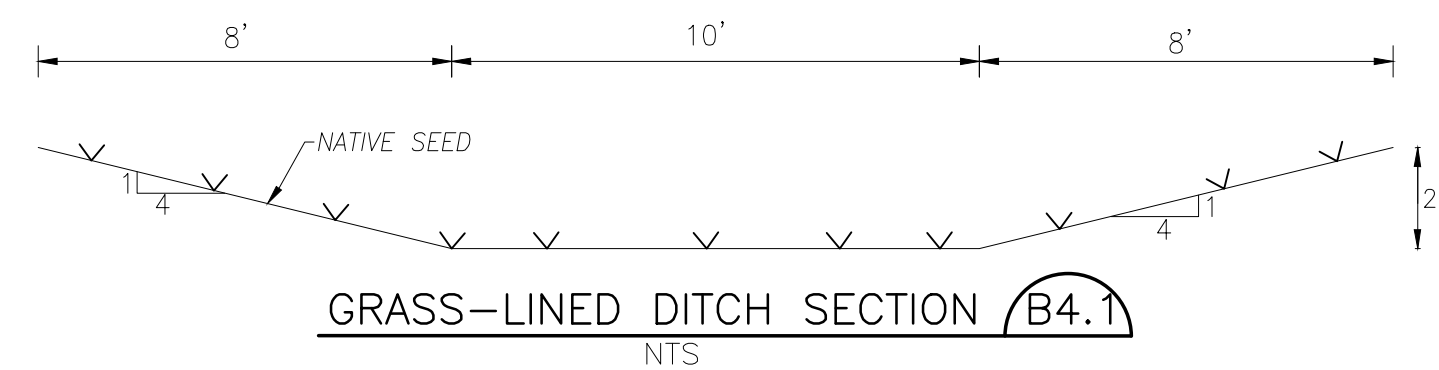
TYPICAL DITCH SECTION WITH EROSION CONTROL BLANKET LINING (B)  
SCALE: NTS



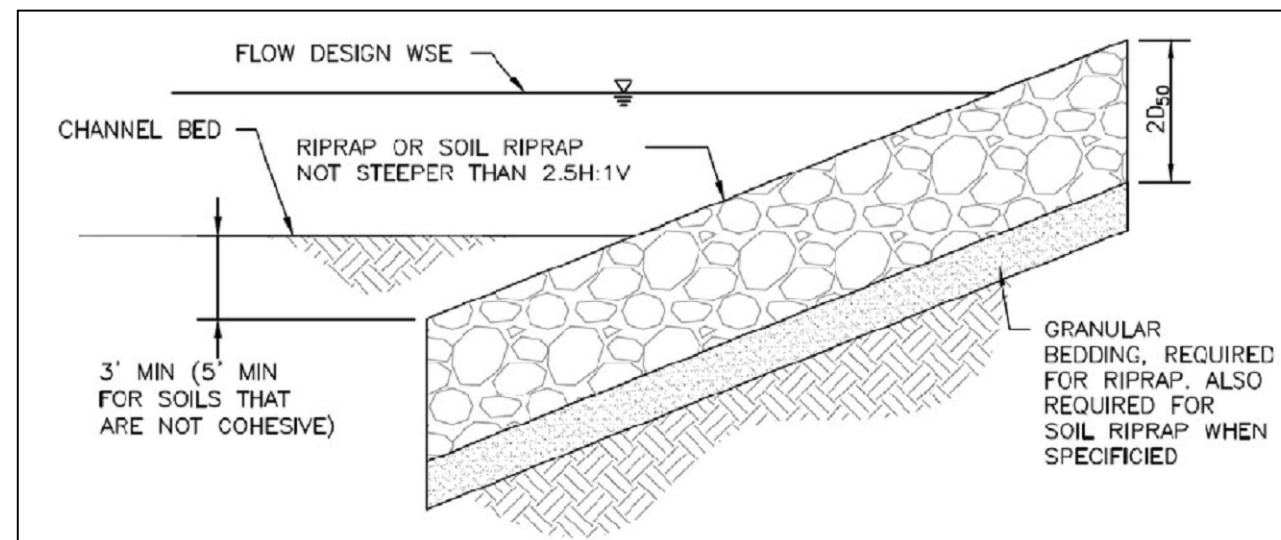
TYPICAL RIPRAP APRON/CULVERT OUTLET PAVING (1)  
N.T.S.



CHANNEL SECTION (B1.1)  
N.T.S.



GRASS-LINED DITCH SECTION (B4.1)  
NTS



RIPRAP DESIGNATION	% SMALLER THAN GIVEN SIZE BY WEIGHT	NTRMFO/ATF ROCK DIMENSION (IN. ES)	D <sub>50</sub> * (INCHES)
TYPE VL	70 - 100	12	6
	50 - 70	9	
	35 - 50 2 - 10	6 2	
TYPE L	70 - 100	15	9
	50 - 70	12	
	35 - 50 2 - 10	9 3	
TYPE M	70 - 100	21	12
	50 - 70	18	
	35 - 50 2 - 10	12 4	
TYPE H	70 - 100	30	18
	50 - 70	24	
	35 - 50 2 - 10	18 6	

\*D<sub>50</sub> = MEAN ROCK SIZE

Figure 8-34. Riprap and soil riprap placement and gradation (part 1 of 3)

SOIL RIPRAP NOTES:

- ELEVATION TOLERANCES FOR THE SOIL RIPRAP SHALL BE 0.10 FEET. THICKNESS OF SOIL RIPRAP SHALL BE NO LESS THAN THICKNESS SHOWN AND NO MORE THAN 2-INCHES GREATER THAN THE THICKNESS SHOWN.
- WHERE "SOIL RIPRAP" IS DESIGNATED ON THE CONTRACT DRAWINGS, RIPRAP VOIDS ARE TO BE FILLED WITH NATIVE SOIL. THE RIPRAP SHALL BE PRE-MIXED WITH THE NATIVE SOIL AT THE FOLLOWING PROPORTIONS BY VOLUME: 65 PERCENT RIPRAP AND 35 PERCENT SOIL. THE SOIL USED FOR MIXING SHALL BE NATIVE TOPSOIL AND SHALL HAVE A MINIMUM FINES CONTENT OF 15 PERCENT. THE SOIL RIPRAP SHALL BE INSTALLED IN A MANNER THAT RESULTS IN A DENSE, INTERLOCKED LAYER OF RIPRAP WITH RIPRAP VOIDS FILLED COMPLETELY WITH SOIL. SEGREGATION OF MATERIALS SHALL BE AVOIDED AND IN NO CASE SHALL THE COMBINED MATERIAL CONSIST PRIMARILY OF SOIL. THE DENSITY AND INTERLOCKING NATURE OF RIPRAP IN THE MIXED MATERIAL SHALL ESSENTIALLY BE THE SAME AS IF THE RIPRAP WAS PLACED WITHOUT SOIL.
- WHERE SPECIFIED (TYPICALLY AS "BURIED SOIL RIPRAP"), A SURFACE LAYER OF TOPSOIL SHALL BE PLACED OVER THE SOIL RIPRAP ACCORDING TO THE THICKNESS SPECIFIED ON THE CONTRACT DRAWINGS. THE TOPSOIL SURFACE LAYER SHALL BE COMPACTED TO APPROXIMATELY 85% OF MAXIMUM DENSITY AND WITHIN TWO PERCENTAGE POINTS OF OPTIMUM MOISTURE IN ACCORDANCE WITH ASTM D698. TOPSOIL SHALL BE ADDED TO ANY AREAS THAT SETTLE.
- ALL SOIL RIPRAP THAT IS BURIED WITH TOPSOIL SHALL BE REVIEWED AND APPROVED BY THE ENGINEER PRIOR TO ANY TOPSOIL PLACEMENT.

U.S. STANDARD SIEVE SIZE	GRADATION FOR GRANULAR BEDDING	
	PERCENT PASSING BY WEIGHT	
	TYPE I CDOT SECT. 703.01	TYPE II CDOT SECT. 703.09 CLASS A
3 INCHES	-	90 - 100
1 1/2 INCHES	-	-
3/4 INCHES	-	20 - 90
3/8 INCHES	100	-
#4	95 - 100	0 - 20
#16	45 - 80	-
#50	10 - 30	-
#100	2 - 10	-
#200	0 - 2	0 - 3

RIPRAP BEDDING

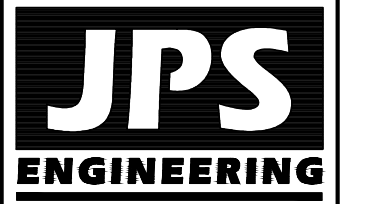
RIPRAP DESIGNATION	THICKNESS REQUIREMENTS FOR GRANULAR BEDDING		
	MINIMUM BEDDING THICKNESS (INCHES)		
	FINE-GRAINED SOILS <sup>1</sup>		COARSE-GRAINED SOILS <sup>2</sup>
	TYPE I (LOWER LAYER)	TYPE II (UPPER LAYER)	TYPE II
VL (D <sub>50</sub> = 6 IN)	4	4	6
L (D <sub>50</sub> = 9 IN)	4	4	6
M (D <sub>50</sub> = 12 IN)	4	4	6
H (D <sub>50</sub> = 18 IN)	4	6	8
VH (D <sub>50</sub> = 24 IN)	4	6	8

- NOTES:  
1. MAY SUBSTITUTE ONE 12-INCH LAYER OF TYPE II BEDDING. THE SUBSTITUTION OF ONE LAYER OF TYPE II BEDDING SHALL NOT BE PERMITTED AT DROP STRUCTURES. THE USE OF A COMBINATION OF FILTER FABRIC AND TYPE II BEDDING AT DROP STRUCTURES IS ACCEPTABLE.  
2. FIFTY PERCENT OR MORE BY WEIGHT RETAINED ON THE #40 SIEVE.

Figure 8-34. Riprap and soil riprap placement and gradation (part 3 of 3)

RIPRAP DETAILS (D)

REFER TO GENERAL NOTES ON CD SH. G2



19 E. Willamette Ave.  
Colorado Springs, CO  
80903  
PH: 719-477-9429  
FAX: 719-471-0766  
www.jpsengr.com



CALL UTILITY NOTIFICATION CENTER OF COLORADO  
1-800-922-1987  
CALL 2-BUSINESS DAYS IN ADVANCE BEFORE YOU DIG, GRADE, OR EXCAVATE FOR THE HAZARD OF UNDERGROUND MEMBER UTILITIES.

SILVERADO RANCH FILING NO. 2

TYPICAL SECTIONS AND DETAILS

NO.	REVISION	DATE	BY
1	FINAL PLAT SUBMITTAL	01/31/24	JPS
2	FINAL PLAT SUBMITTAL	05/23/24	JPS

HORIZ. SCALE: AS SHOWN	DRAWN: PV
VERT. SCALE: AS SHOWN	DESIGNED: JPS
SURVEYED: LWA	CHECKED: JPS
CREATED: 9/16/20	LAST MODIFIED: 05/23/24
PROJECT NO: 180603	MODIFIED BY: PV

SHEET: TY1



CALL UTILITY NOTIFICATION  
CENTER OF COLORADO  
1-800-922-1987  
CALL 2-BUSINESS DAYS IN ADVANCE  
BEFORE YOU DIG, GRADE, OR EXCAVATE  
FOR THE MARKING OF UNDERGROUND  
MEMBER UTILITIES.

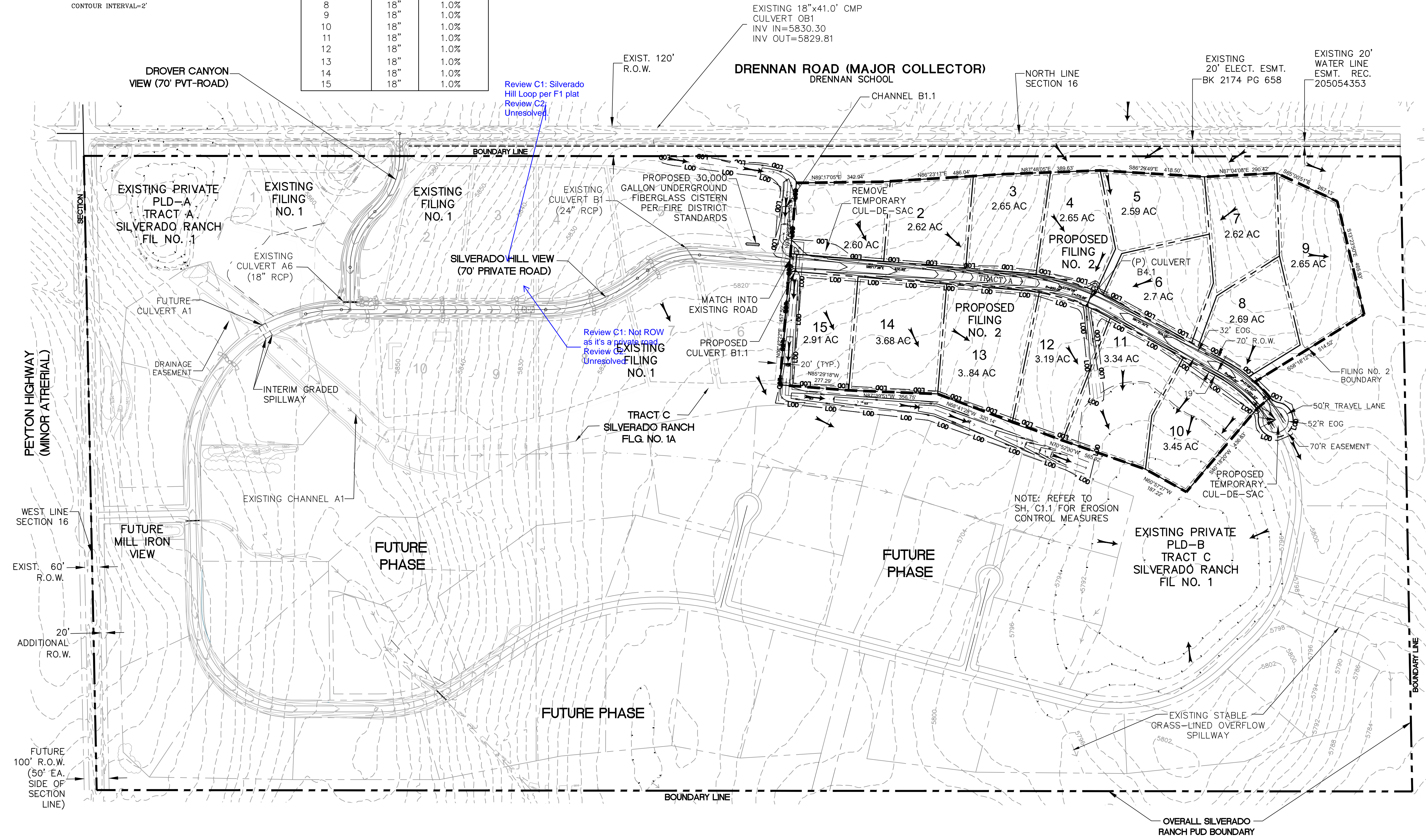
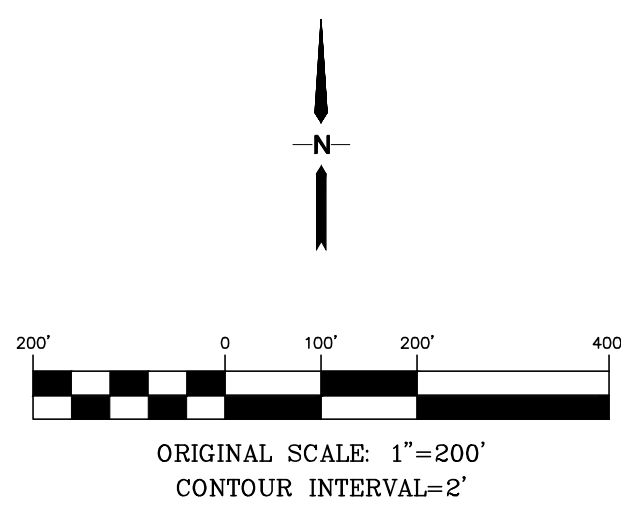
No.	REVISION	BY	DATE
1	FINAL PLAT SUBMITTAL	JPS	02/01/24
2	EPC COMMENTS	JPS	06/07/24

**OVERALL SITE  
PLAN**

**SILVERADO RANCH FILING NO. 2**

**DRIVEWAY CULVERT TABLE**

LOT NO.	SIZE (DIA.)	MIN. SLOPE
1	18"	1.0%
2	18"	1.0%
3	18"	1.0%
4	18"	1.0%
5	18"	1.0%
6	18"	1.0%
7	18"	1.0%
8	18"	1.0%
9	18"	1.0%
10	18"	1.0%
11	18"	1.0%
12	18"	1.0%
13	18"	1.0%
14	18"	1.0%
15	18"	1.0%



Review C1: Silverado Hill Loop per F1 plat  
Review C2: Unresolved

Review C1: Not ROW as it's a private road  
Review C2: Unresolved

HORIZ. SCALE:	1"=200'	DRAWN:	MSP
VERT. SCALE:	N/A	DESIGNED:	JPS
SURVEYED:	LWA	CHECKED:	JPS
CREATED:	9/21/22	LAST MODIFIED:	06/07/24
PROJECT NO.:	080603	MODIFIED BY:	PV
SHEET:			



**EROSION CONTROL LEGEND:**

- 6490 EXISTING CONTOURS
- PROPOSED CONTOURS
- PROPOSED SPOT ELEVATION (FLOWLINE)
- VTC VEHICLE TRACKING CONTROL PAD
- SM SEED AND MULCH
- SSA STABILIZED STAGING AREA
- RCD ROCK CHECK DAM
- PLD POROUS LANDSCAPE DETENTION
- RR RIPRAP
- ECB EROSION CONTROL BLANKETS (REFER TO P&P SHEETS)
- CUT/FILL CUT/FILL DEMARCATION LINE
- LOD LIMITS OF DISTURBANCE/LIMIT OF CONSTRUCTION
- CIP CULVERT INLET PROTECTION
- SCL SEDIMENT CONTROL LOGS
- FLOW DIRECTION ARROWS

**ESTIMATED EARTHWORK QUANTITY:**

UNCLASSIFIED EXCAVATION (TOTAL CUT) = 18,005 CY  
 \* EMBANKMENT FILL = 6,593 CY  
 NET (CUT) = 10,423 CY

\*(ASSUMES 15% COMPACTION FACTOR)

NOTE: THIS ESTIMATE IS PROVIDED FOR INFORMATION ONLY, REPRESENTING THE CALCULATED BULK EARTHWORK VOLUME NOT INCLUDING ANY ADJUSTMENTS FOR PAVEMENT DEPTHS. CONTRACTOR SHALL MAKE HIS OWN DETERMINATION OF EARTHWORK QUANTITIES AS BASIS FOR BID PRICING AND NOTIFY ENGINEER OF ANY DISCREPANCIES.

**GENERAL DRAINAGE NOTES:**

1. INDIVIDUAL BUILDERS SHALL PROVIDE POSITIVE DRAINAGE AWAY FROM STRUCTURES AND ACCOUNT FOR POTENTIAL CROSS-LOT DRAINAGE IMPACTS WITHIN EACH LOT.

2. BUILDERS AND PROPERTY OWNERS SHALL IMPLEMENT & MAINTAIN EROSION CONTROL BEST MANAGEMENT PRACTICES FOR PROTECTION OF DOWNSTREAM PROPERTIES AND FACILITIES INCLUDING PROTECTION OF EXISTING GRASS BUFFER STRIPS ALONG THE DOWNSTREAM PROPERTY BOUNDARIES.

GENERAL GEC NOTE: ALL AREAS TO BE VEGETATED WITH SEEDING SHOULD ALSO BE TEMPORARILY STABILIZED VIA SURFACE ROUGHENING OR SOME OTHER MEANS.

**KEYED NOTES:**

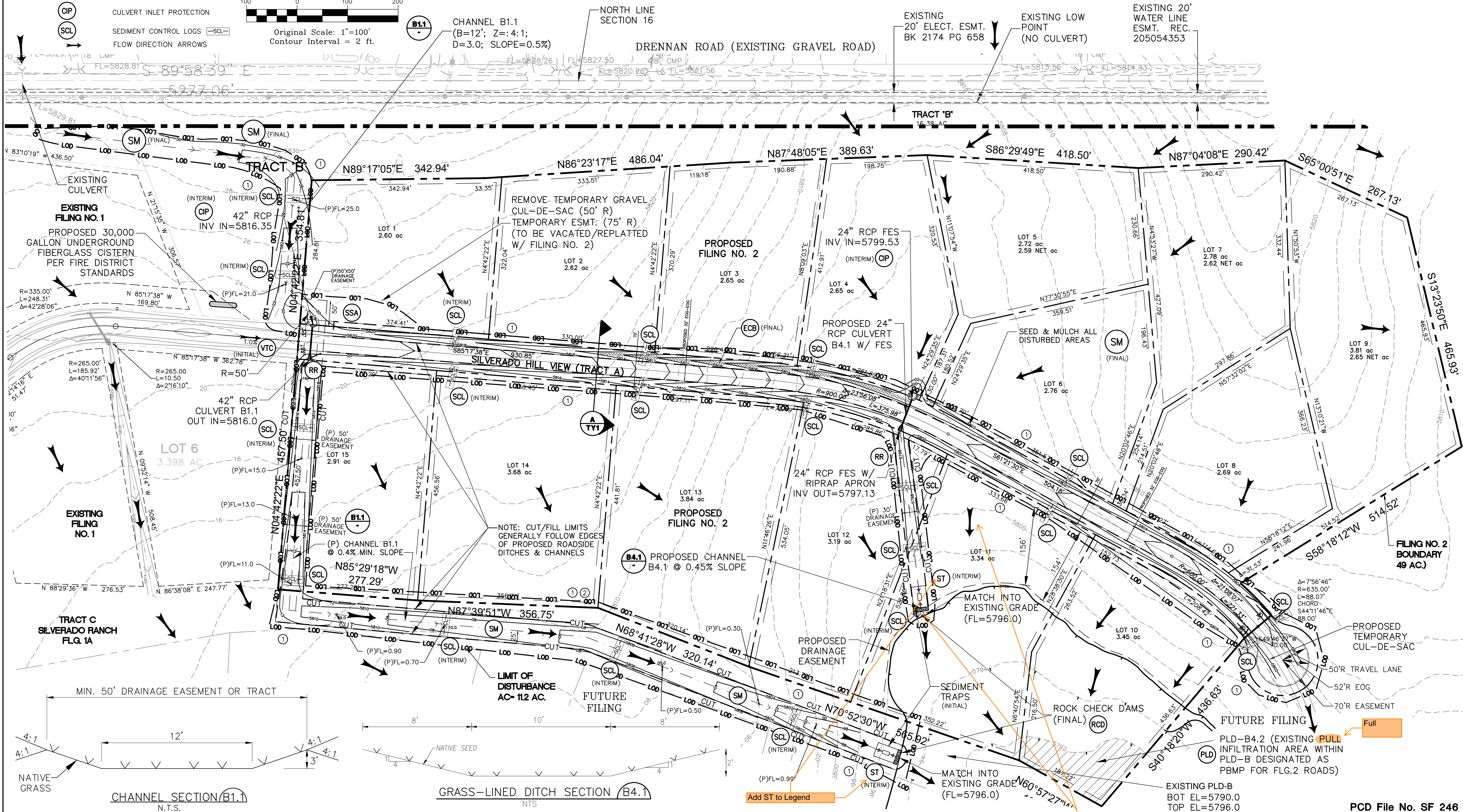
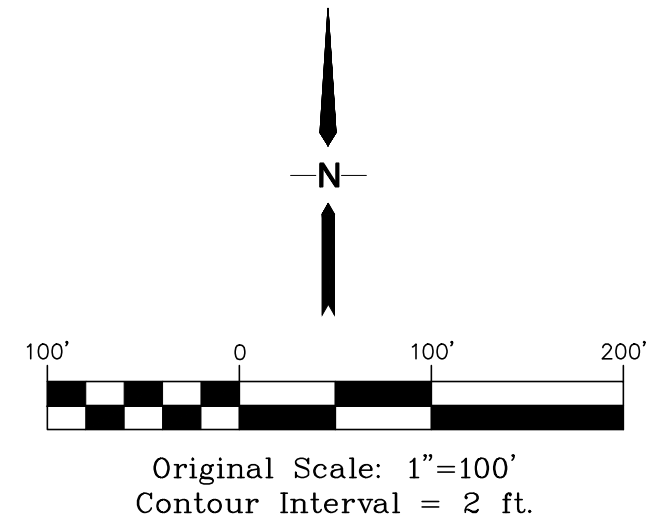
- 1 CONTRACTOR MAY WASTE EXCESS CUT MATERIAL OR BORROW SUITABLE FILL MATERIAL FROM THIS AREA. MATCH INTO EXISTING GRADES WITH 3:1 MAX CUT AND FILL SLOPES AND MAINTAIN POSITIVE DRAINAGE IN ALL AREAS.
- 2 TOPSOIL STOCKPILE AREA

**CONTROL MEASURE NOTES:**

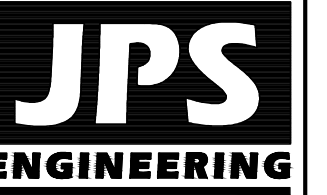
1. EXISTING VEGETATION CONSISTS OF NATIVE GRASSES
2. NO DEDICATED ASPHALT OR CONCRETE BATCH PLANTS ARE PLANNED ON SITE
3. CONTRACTOR SHALL UPDATE AND ANNOTATE THE SWMP MAPS TO SHOW THE LOCATION OF THE CONSTRUCTION TRAILER, STABILIZED STAGING AREA, CWA AND OTHER ITEMS AS THESE LOCATIONS ARE DETERMINED ON SITE.

**CONTROL MEASURE (CM) PHASING**

- INITIAL CM'S
  - INSTALL VTC
  - SSA
- INTERIM CM'S
  - SCL
  - CIP
- FINAL CM'S
  - RIPRAP APRONS
  - SEEDING
  - ECB
  - RCD



**SILVERADO RANCH FILING NO. 2**



19 E. Willamette Ave.  
 Colorado Springs, CO 80903  
 PH: 719-477-9429  
 FAX: 719-471-0766



CALL UTILITY NOTIFICATION  
 CENTER OF COLORADO  
 1-800-922-1987  
 CALL 3-BUSINESS DAYS IN ADVANCE  
 BEFORE YOU DIG, GRADE, OR EXCAVATE  
 FOR THE MARKING OF UNDERGROUND  
 MEMBER UTILITIES.

NO.	REVISION	BY	DATE
1	FINAL PLAT SUBMITTAL	JPS	02/01/24
2	EPC COMMENTS	JPS	06/07/24

**GRADING AND EROSION CONTROL PLAN**

HORIZ. SCALE: 1"=100'	DRAWN: MSP
VERT. SCALE: AS SHOWN	DESIGNED: JPS
SURVEYED: LWA	CHECKED: JPS
CREATED: 9/25/22	LAST MODIFIED: 08/07/24
PROJECT NO: 080603	MODIFIED BY: PV
SHEET:	

**C11**

PCD File No. SF 246

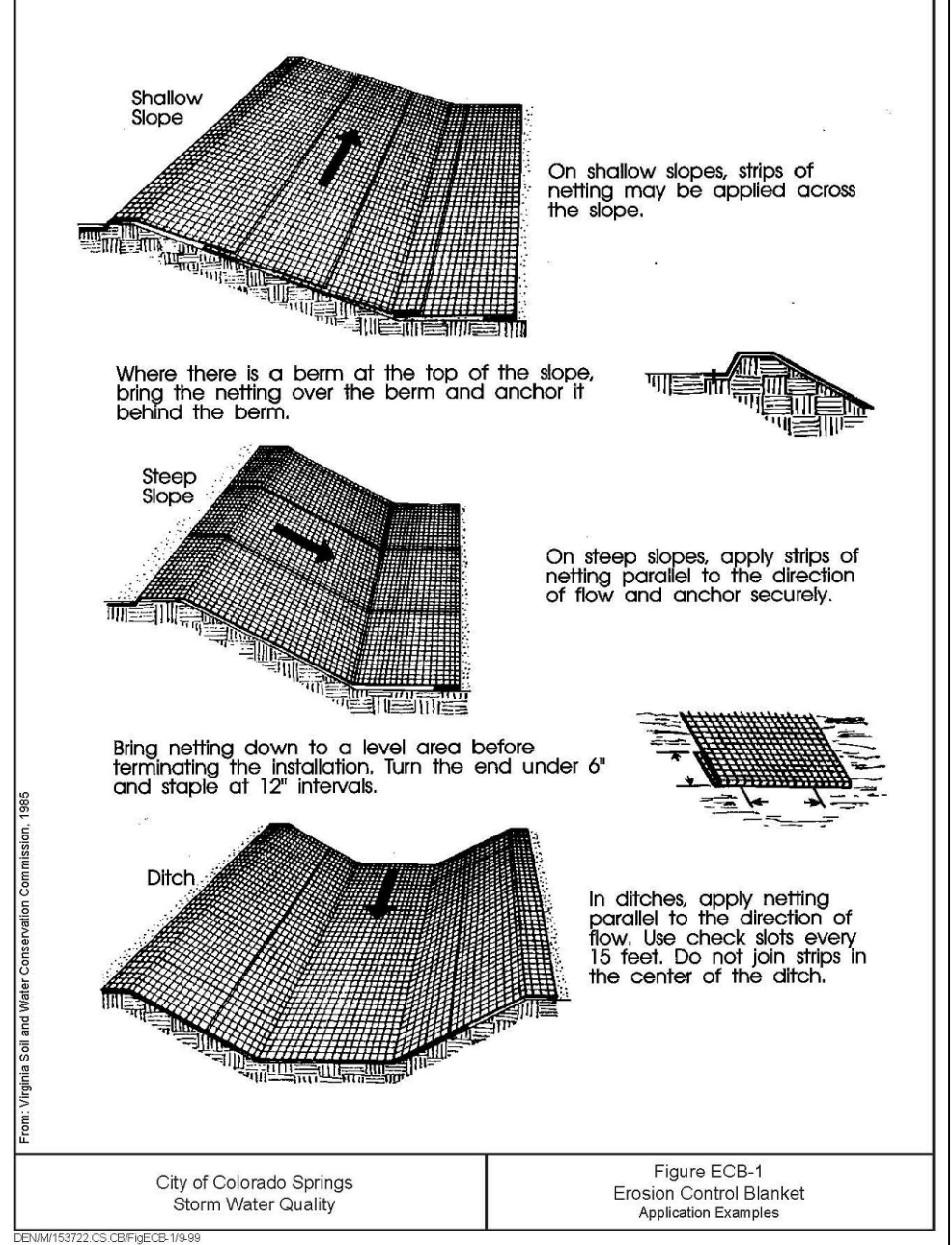
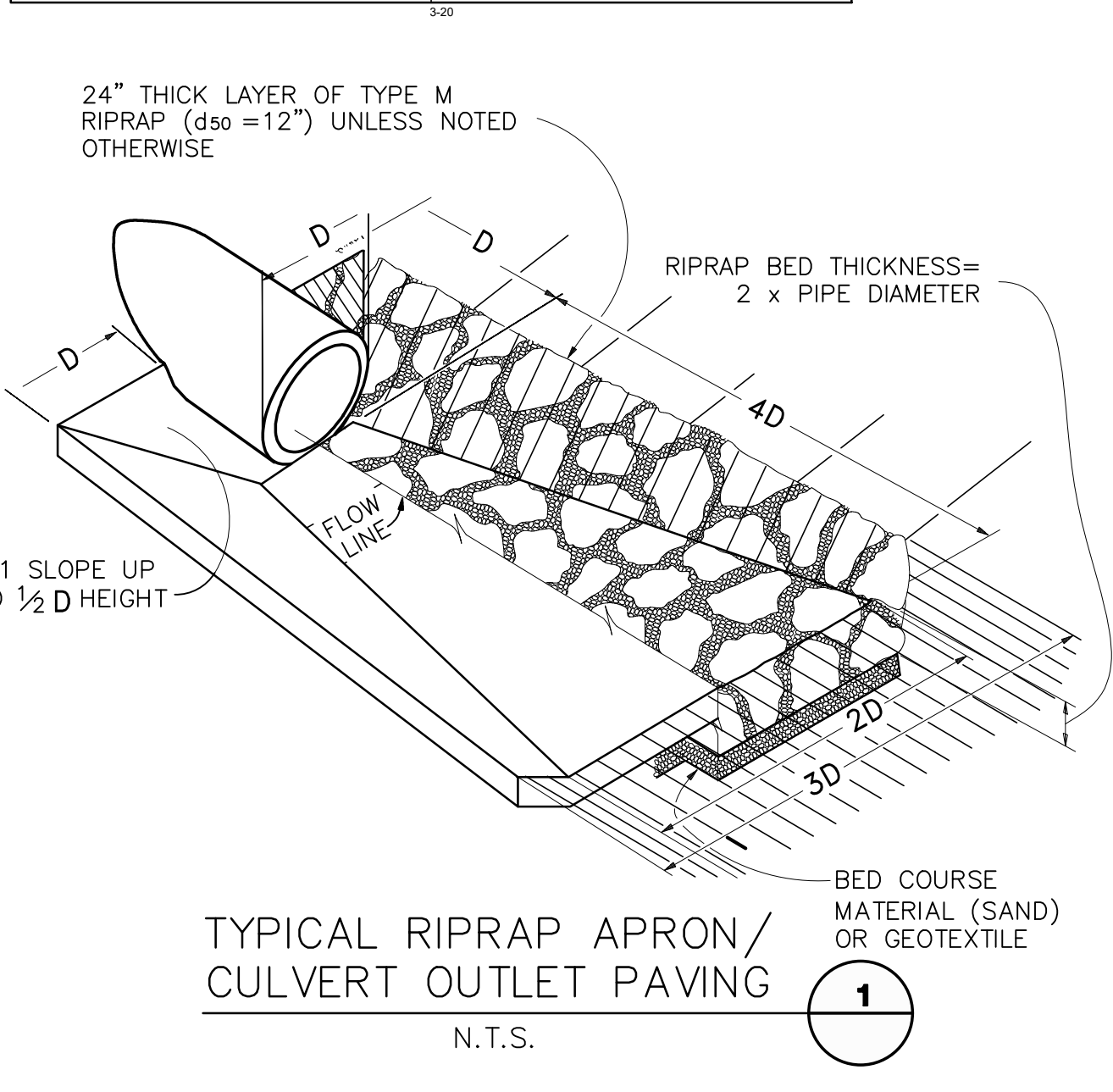
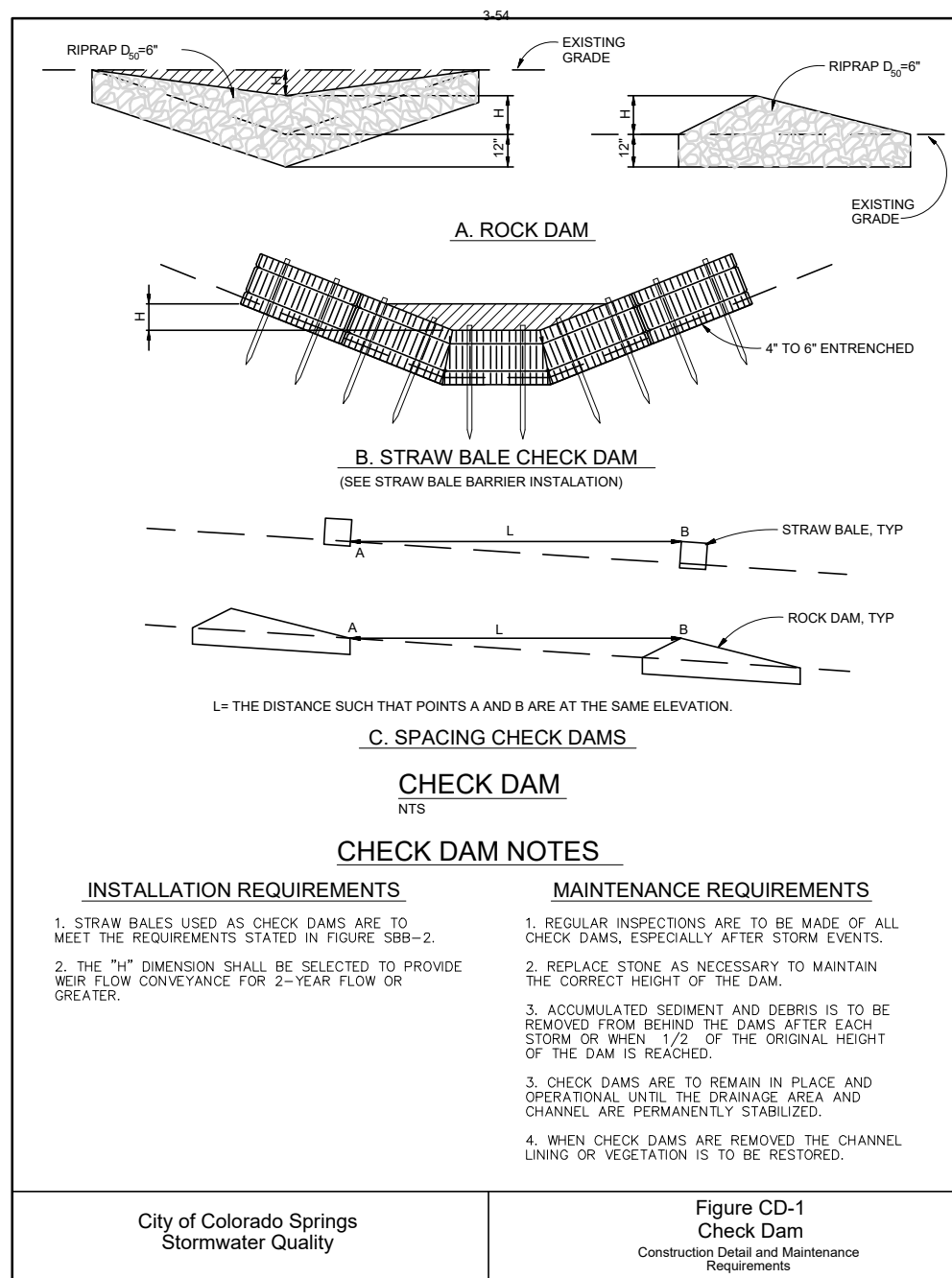
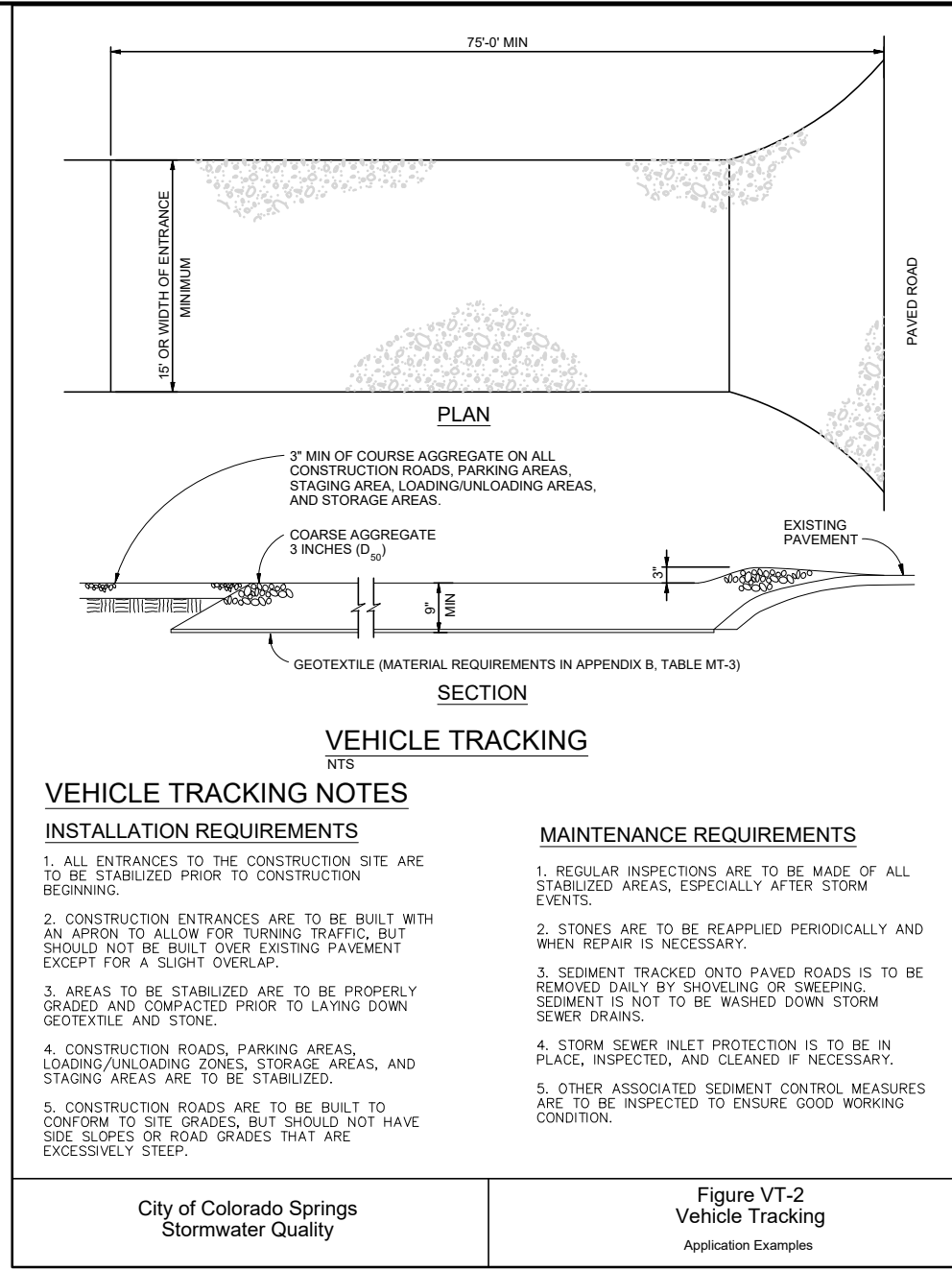
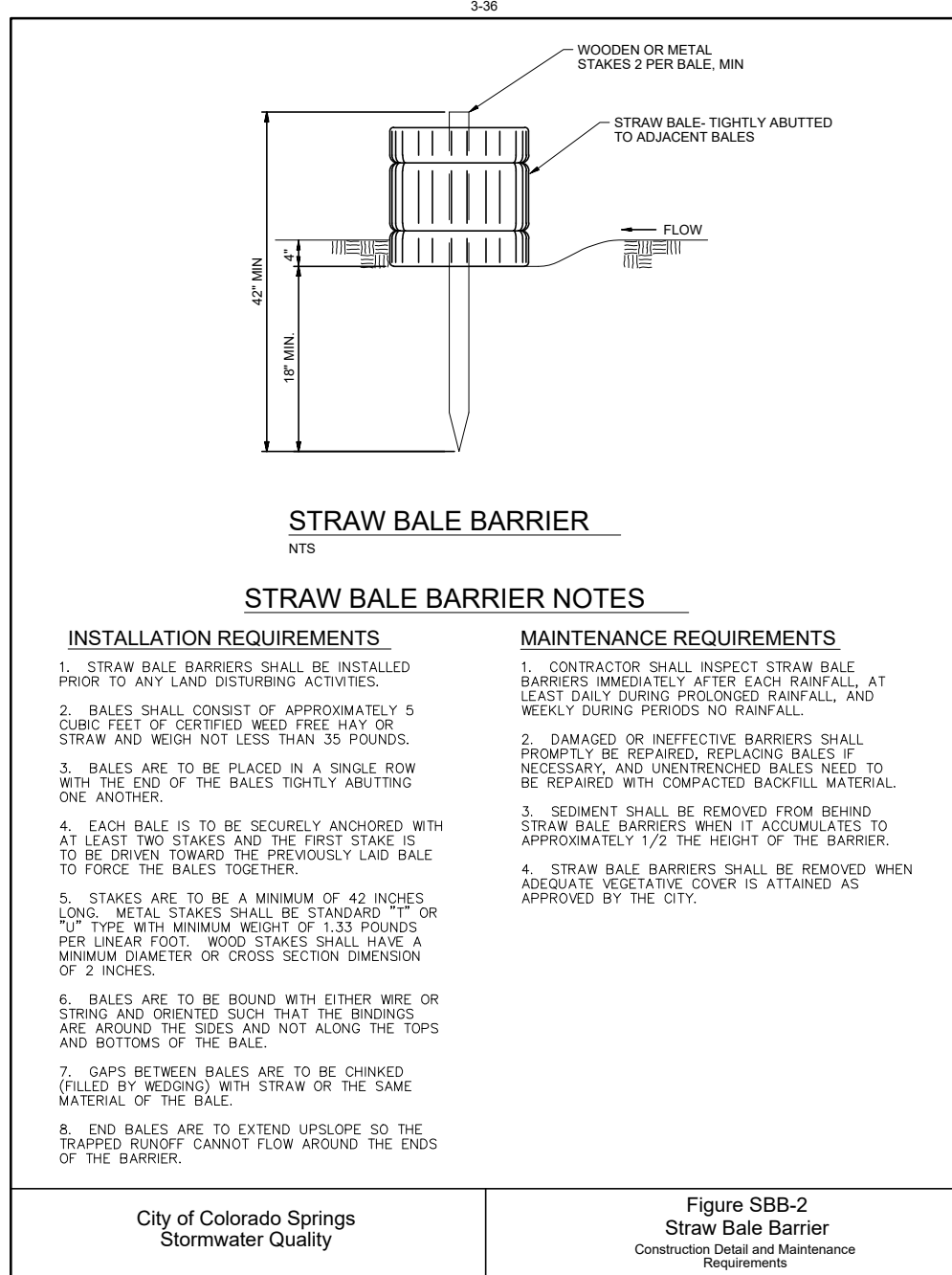
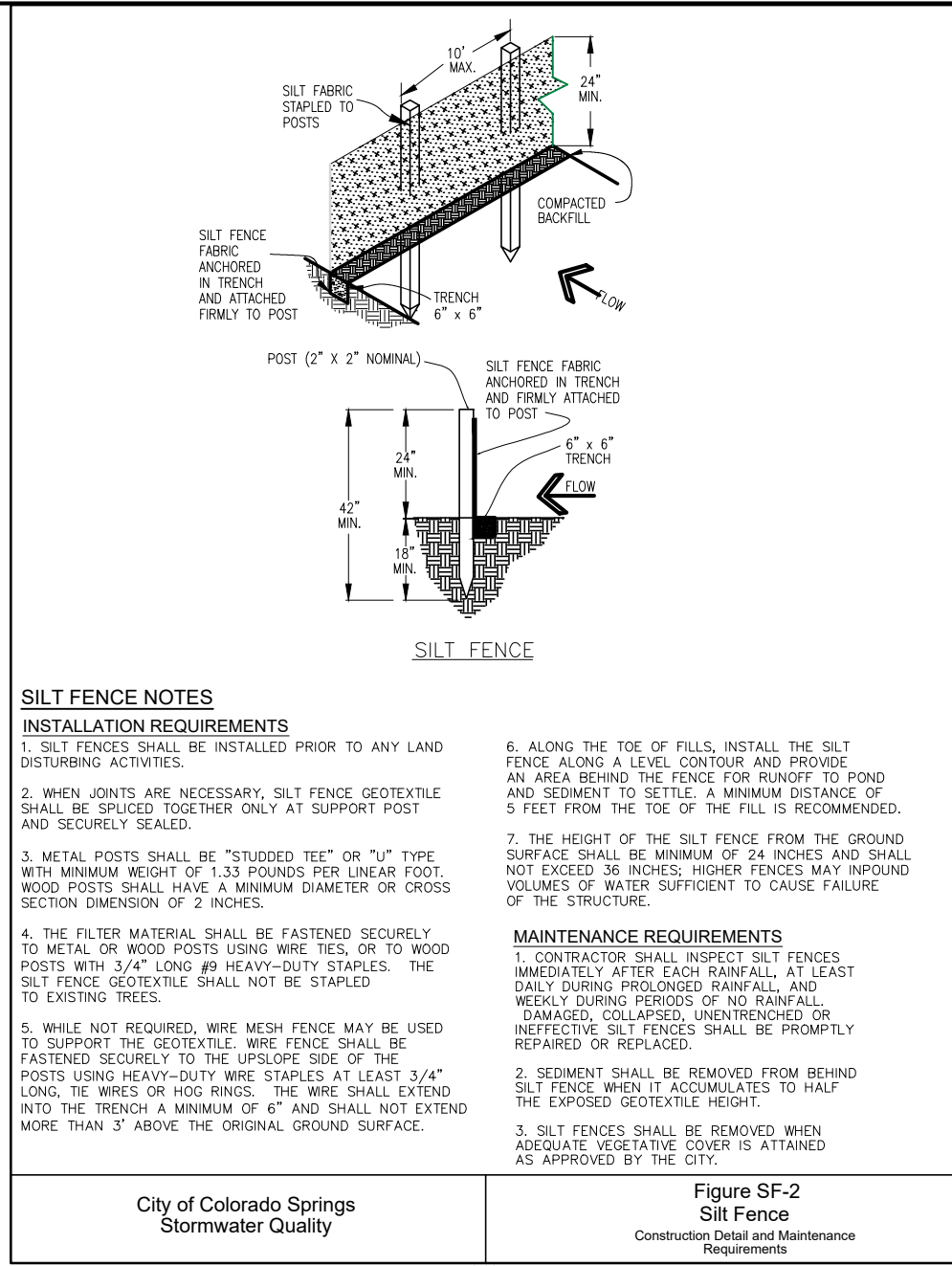
MHFD Detail T-3 for PLDs shows riprap at concentrated inflow points.

**STANDARD NOTES FOR EL PASO COUNTY GRADING AND EROSION CONTROL PLANS:**

- REVISED 7/02/19
- STORMWATER DISCHARGES FROM CONSTRUCTION SITES SHALL NOT CAUSE OR THREATEN TO CAUSE POLLUTION, CONTAMINATION, OR DEGRADATION OF STATE WATERS. ALL WORK AND EARTH DISTURBANCE SHALL BE DONE IN A MANNER THAT MINIMIZES POLLUTION OF ANY ON-SITE OR OFF-SITE WATERS, INCLUDING WETLANDS.
  - NOTWITHSTANDING ANYTHING DEPICTED IN THESE PLANS OR GRAPHIC REPRESENTATION, ALL DESIGN AND CONSTRUCTION RELATED TO ROADS, STORM DRAINAGE AND EROSION CONTROL SHALL CONFORM TO THE STANDARDS AND REQUIREMENTS OF THE MOST RECENT VERSION OF THE RELEVANT ADOPTED EL PASO COUNTY STANDARDS, INCLUDING THE LAND DEVELOPMENT CODE, THE ENGINEERING CRITERIA MANUAL, THE DRAINAGE CRITERIA MANUAL, AND THE DRAINAGE CRITERIA MANUAL VOLUME 2. ANY DEVIATIONS FROM REGULATIONS AND STANDARDS MUST BE REQUESTED, AND APPROVED, IN WRITING.
  - A SEPARATE STORMWATER MANAGEMENT PLAN (SWMP) FOR THIS PROJECT SHALL BE COMPLETED AND AN EROSION AND STORMWATER QUALITY CONTROL PERMIT (ESQCP) ISSUED PRIOR TO COMMENCING CONSTRUCTION. MANAGEMENT OF THE SWMP DURING CONSTRUCTION IS THE RESPONSIBILITY OF THE DESIGNATED QUALIFIED STORMWATER MANAGER OR CERTIFIED EROSION CONTROL INSPECTOR. THE SWMP SHALL BE LOCATED ON SITE AT ALL TIMES DURING CONSTRUCTION AND SHALL BE KEPT UP TO DATE WITH WORK PROGRESS AND CHANGES IN THE FIELD.
  - ONCE THE ESQCP IS APPROVED AND A "NOTICE TO PROCEED" HAS BEEN ISSUED, THE CONTRACTOR MAY INSTALL THE INITIAL STAGE EROSION AND SEDIMENT CONTROL MEASURES AS INDICATED ON THE APPROVED GEC. A PRECONSTRUCTION MEETING BETWEEN THE CONTRACTOR, ENGINEER, AND EL PASO COUNTY WILL BE HELD PRIOR TO ANY CONSTRUCTION. IT IS THE RESPONSIBILITY OF THE APPLICANT TO COORDINATE THE MEETING TIME AND PLACE WITH COUNTY STAFF.
  - CONTROL MEASURES MUST BE INSTALLED PRIOR TO COMMENCEMENT OF ACTIVITIES THAT COULD CONTRIBUTE POLLUTANTS TO STORMWATER. CONTROL MEASURES FOR ALL SLOPES, CHANNELS, DITCHES, AND DISTURBED LAND AREAS SHALL BE INSTALLED IMMEDIATELY UPON COMPLETION OF THE DISTURBANCE.
  - ALL TEMPORARY SEDIMENT AND EROSION CONTROL MEASURES SHALL BE MAINTAINED AND REMAIN IN EFFECTIVE OPERATING CONDITION UNTIL PERMANENT SOIL EROSION CONTROL MEASURES ARE IMPLEMENTED AND FINAL STABILIZATION IS ESTABLISHED. ALL PERSONS ENGAGED IN LAND DISTURBANCE ACTIVITIES SHALL ASSESS THE ADEQUACY OF CONTROL MEASURES AT THE SITE AND IDENTIFY IF CHANGES TO THOSE CONTROL MEASURES ARE NEEDED TO ENSURE THE CONTINUED EFFECTIVE PERFORMANCE OF THE CONTROL MEASURES. ALL CHANGES TO TEMPORARY SEDIMENT AND EROSION CONTROL MEASURES MUST BE INCORPORATED INTO THE STORMWATER MANAGEMENT PLAN.
  - TEMPORARY STABILIZATION SHALL BE IMPLEMENTED ON DISTURBED AREAS AND STOCKPILES WHERE GROUND DISTURBING CONSTRUCTION ACTIVITY HAS PERMANENTLY CEASED OR TEMPORARILY CEASED FOR LONGER THAN 14 DAYS.
  - FINAL STABILIZATION MUST BE IMPLEMENTED AT ALL APPLICABLE CONSTRUCTION SITES. FINAL STABILIZATION IS ACHIEVED WHEN ALL GROUND DISTURBING ACTIVITIES ARE COMPLETE AND ALL DISTURBED AREAS EITHER HAVE A UNIFORM VEGETATIVE COVER WITH INDIVIDUAL PLANT DENSITY OF 70 PERCENT OF PRE-DISTURBANCE LEVELS ESTABLISHED OR EQUIVALENT PERMANENT ALTERNATIVE STABILIZATION METHOD IS IMPLEMENTED. ALL TEMPORARY SEDIMENT AND EROSION CONTROL MEASURES SHALL BE REMOVED UPON FINAL STABILIZATION AND BEFORE PERMIT CLOSURE.
  - ALL PERMANENT STORMWATER MANAGEMENT FACILITIES SHALL BE INSTALLED AS DESIGNED IN THE APPROVED PLANS. ANY PROPOSED CHANGES THAT AFFECT THE DESIGN OR FUNCTION OF PERMANENT STORMWATER MANAGEMENT STRUCTURES MUST BE APPROVED BY THE ECM ADMINISTRATOR PRIOR TO IMPLEMENTATION.
  - EARTH DISTURBANCES SHALL BE CONDUCTED IN SUCH A MANNER SO AS TO EFFECTIVELY MINIMIZE ACCELERATED SOIL EROSION AND RESULTING SEDIMENTATION. ALL DISTURBANCES SHALL BE DESIGNED, CONSTRUCTED, AND COMPLETED SO THAT THE EXPOSED AREA OF ANY DISTURBED LAND SHALL BE LIMITED TO THE SHORTEST PRACTICAL PERIOD OF TIME. PRE-EXISTING VEGETATION SHALL BE PROTECTED AND MAINTAINED WITHIN 50 HORIZONTAL FEET OF A WATERS OF THE STATE UNLESS SHOWN TO BE INFEASIBLE AND SPECIFICALLY REQUESTED AND APPROVED.
  - COMPACTION OF SOIL MUST BE PREVENTED IN AREAS DESIGNATED FOR INFILTRATION CONTROL MEASURES OR WHERE FINAL STABILIZATION WILL BE ACHIEVED BY VEGETATIVE COVER. AREAS DESIGNATED FOR INFILTRATION CONTROL MEASURES SHALL ALSO BE PROTECTED FROM SEDIMENTATION DURING CONSTRUCTION UNTIL FINAL STABILIZATION IS ACHIEVED. IF COMPACTION PREVENTION IS NOT FEASIBLE DUE TO SITE CONSTRAINTS, ALL AREAS DESIGNATED FOR INFILTRATION AND VEGETATION CONTROL MEASURES MUST BE LOOSENED PRIOR TO INSTALLATION OF THE CONTROL MEASURE(S).
  - ANY TEMPORARY OR PERMANENT FACILITY DESIGNED AND CONSTRUCTED FOR THE CONVEYANCE OF STORMWATER AROUND, THROUGH, OR FROM THE EARTH DISTURBANCE AREA SHALL BE A STABILIZED CONVEYANCE DESIGNED TO MINIMIZE EROSION AND THE DISCHARGE OF SEDIMENT OFF SITE.
  - CONCRETE WASH WATER SHALL BE CONTAINED AND DISPOSED OF IN ACCORDANCE WITH THE SWMP. NO WASH WATER SHALL BE DISCHARGED TO OR ALLOWED TO ENTER STATE WATERS, INCLUDING ANY SURFACE OR SUBSURFACE STORM DRAINAGE SYSTEM OR FACILITIES. CONCRETE WASHOUTS SHALL NOT BE LOCATED IN AN AREA WHERE SHALLOW GROUNDWATER MAY BE PRESENT, OR WITHIN 50 FEET OF A SURFACE WATER BODY, CREEK OR STREAM.
  - DURING DEWATERING OPERATIONS OF UNCONTAMINATED GROUND WATER MAY BE DISCHARGED ON SITE, BUT SHALL NOT LEAVE THE SITE IN THE FORM OF SURFACE RUNOFF UNLESS AN APPROVED STATE DEWATERING PERMIT IS IN PLACE.
  - EROSION CONTROL BLANKETING OR OTHER PROTECTIVE COVERING SHALL BE USED ON SLOPES STEEPER THAN 3:1.
  - CONTRACTOR SHALL BE RESPONSIBLE FOR THE REMOVAL OF ALL WASTES FROM THE CONSTRUCTION SITE FOR DISPOSAL IN ACCORDANCE WITH LOCAL AND STATE REGULATORY REQUIREMENTS. NO CONSTRUCTION DEBRIS, TREE SLASH, BUILDING MATERIAL WASTES OR UNUSED BUILDING MATERIALS SHALL BE BURIED, DUMPED, OR DISCHARGED AT THE SITE.
  - WASTE MATERIALS SHALL NOT BE TEMPORARILY PLACED OR STORED IN THE STREET, ALLEY, OR OTHER PUBLIC WAY, UNLESS IN ACCORDANCE WITH AN APPROVED TRAFFIC CONTROL PLAN. CONTROL MEASURES MAY BE REQUIRED BY EL PASO COUNTY ENGINEERING IF DEEMED NECESSARY, BASED ON SPECIFIC CONDITIONS AND CIRCUMSTANCES.
  - TRACKING OF SOILS AND CONSTRUCTION DEBRIS OFF-SITE SHALL BE MINIMIZED. MATERIALS TRACKED OFF-SITE SHALL BE CLEANED UP AND PROPERLY DISPOSED OF IMMEDIATELY.
  - THE OWNER/DEVELOPER SHALL BE RESPONSIBLE FOR THE REMOVAL OF ALL CONSTRUCTION DEBRIS, DIRT, TRASH, ROCK, SEDIMENT, SOIL, AND SAND THAT MAY ACCUMULATE IN ROADS, STORM DRAINS AND OTHER DRAINAGE CONVEYANCE SYSTEMS AND STORMWATER APPURTENANCES AS A RESULT OF SITE DEVELOPMENT.
  - THE QUANTITY OF MATERIALS STORED ON THE PROJECT SITE SHALL BE LIMITED, AS MUCH AS PRACTICAL, TO THAT QUANTITY REQUIRED TO PERFORM THE WORK IN AN ORDERLY SEQUENCE. ALL MATERIALS STORED ON-SITE SHALL BE STORED IN A NEAT, ORDERLY MANNER, IN THEIR ORIGINAL CONTAINERS, WITH ORIGINAL MANUFACTURER'S LABELS.
  - NO CHEMICAL(S) HAVING THE POTENTIAL TO BE RELEASED IN STORMWATER ARE TO BE STORED OR USED ONSITE UNLESS PERMISSION FOR THE USE OF SUCH CHEMICAL(S) IS GRANTED IN WRITING BY THE ECM ADMINISTRATOR. IN GRANTING APPROVAL FOR THE USE OF SUCH CHEMICAL(S), SPECIAL CONDITIONS AND MONITORING MAY BE REQUIRED.
  - BULK STORAGE OF ALLOWED PETROLEUM PRODUCTS OR OTHER ALLOWED LIQUID CHEMICALS IN EXCESS OF 55 GALLONS SHALL REQUIRE ADEQUATE SECONDARY CONTAINMENT PROTECTION TO CONTAIN ALL SPILLS ONSITE AND TO PREVENT ANY SPILLED MATERIALS FROM ENTERING STATE WATERS, ANY SURFACE OR SUBSURFACE STORM DRAINAGE SYSTEM OR OTHER FACILITIES. NO PERSON SHALL CAUSE THE IMPEDIMENT OF STORMWATER FLOW IN THE CURB AND GUTTER OR DITCH EXCEPT WITH APPROVED SEDIMENT CONTROL MEASURES.
  - OWNER/DEVELOPER AND THEIR AGENTS SHALL COMPLY WITH THE "COLORADO WATER QUALITY CONTROL ACT" (TITLE 25, ARTICLE 8, CRS), AND THE "CLEAN WATER ACT" (33 USC 1344), IN ADDITION TO THE REQUIREMENTS OF THE LAND DEVELOPMENT CODE, DCM VOLUME II AND THE ECM APPENDIX I. ALL APPROPRIATE PERMITS MUST BE OBTAINED BY THE CONTRACTOR PRIOR TO CONSTRUCTION (1041, NPDES, FLOODPLAIN, 404, FUGITIVE DUST, ETC.). IN THE EVENT OF CONFLICTS BETWEEN THESE REQUIREMENTS AND OTHER LAWS, RULES, OR REGULATIONS OF OTHER FEDERAL, STATE, LOCAL, OR COUNTY AGENCIES, THE MOST RESTRICTIVE LAWS, RULES, OR REGULATIONS SHALL APPLY.
  - ALL CONSTRUCTION TRAFFIC MUST ENTER/EXIT THE SITE ONLY AT APPROVED CONSTRUCTION ACCESS POINTS.
  - PRIOR TO CONSTRUCTION THE PERMITTEE SHALL VERIFY THE LOCATION OF EXISTING UTILITIES.
  - A WATER SOURCE SHALL BE AVAILABLE ON SITE DURING EARTHWORK OPERATIONS AND SHALL BE UTILIZED AS REQUIRED TO MINIMIZE DUST FROM EARTHWORK EQUIPMENT AND WIND.
  - THE SOILS REPORT FOR THIS SITE SHALL BE CONSIDERED A PART OF THESE PLANS. ("PRELIMINARY GEOLOGY AND SURFACE SOILS EVALUATION AND SEWAGE DISPOSAL EVALUATION," FRONT RANGE GEOTECHNICAL INC, OCTOBER 5, 2006)
  - AT LEAST TEN (10) DAYS PRIOR TO THE ANTICIPATED START OF CONSTRUCTION, FOR PROJECTS THAT WILL DISTURB ONE (1) ACRE OR MORE, THE OWNER OR OPERATOR OF CONSTRUCTION ACTIVITY SHALL SUBMIT A PERMIT APPLICATION FOR STORMWATER DISCHARGE TO THE COLORADO DEPARTMENT OF PUBLIC HEALTH AND ENVIRONMENT, WATER QUALITY DIVISION. THE APPLICATION CONTAINS CERTIFICATION OF COMPLETION OF A STORMWATER MANAGEMENT PLAN (SWMP), OF WHICH THIS GRADING AND EROSION CONTROL PLAN MAY BE A PART. FOR INFORMATION OR APPLICATION MATERIALS CONTACT:

COLORADO DEPARTMENT OF PUBLIC HEALTH AND ENVIRONMENT  
 WATER QUALITY CONTROL DIVISION  
 WQCD - PERMITS  
 4300 CHERRY CREEK DRIVE SOUTH  
 DENVER, CO 80246-1530  
 ATTN: PERMITS UNIT

NOTE:  
 NOTWITHSTANDING ANY DETAILS, NOTES OR PLANS SHOWN ON THESE DRAWINGS, ALL EROSION CONTROL DESIGNS AND INSTALLATIONS SHALL CONFORM TO EL PASO COUNTY STANDARDS AND POLICIES UNLESS OTHERWISE APPROVED IN WRITING.



**SEEDING MIX:**

GRASS	VARIETY	AMOUNT IN PLS LBS. PER ACRE
CRESTED WHEAT GRASS	EPHRAIM OR HYCREST	4.0 LBS.
PERENNIAL RYE	LINN	2.0 LBS.
WESTERN WHEATGRASS	SARTON	3.0 LBS.
SMOOTH BROME GRASS	LINCOLN OR MANCHAR	5.0 LBS.
SIDCOATS GRAMA	EPHRAIM	2.5 LBS.
TOTAL:		16.5 LBS.

SEEDING & FERTILIZER APPLICATION: DRILL SEED OR HYDRO-SEED PER CDOT SPEC. SECTION 212.

MULCHING APPLICATION: CONFORM TO CDOT SPEC-SECTION 213.

**SEDIMENT CONTROL MAINTENANCE PROGRAM:**

PERIODIC SITE INSPECTIONS BI-WEEKLY  
 RE-VEGETATION OF EXPOSED SOILS WITHIN 21 DAYS OF GRADING  
 SEDIMENT REMOVAL FROM BMP'S MONTHLY  
 REMOVAL OF BMP'S AFTER STABILIZATION ACHIEVED

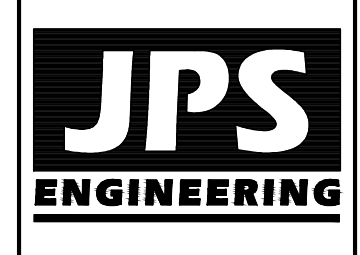
1 AND AFTER ANY PRECIPITATION OR SNOW MELT EVENT THAT CAUSES SURFACE EROSION.

2 ACCUMULATED SEDIMENT AND DEBRIS SHALL BE REMOVED WHEN THE SEDIMENT LEVEL REACHES ONE HALF THE HEIGHT OF THE BMP OR AT ANY TIME THAT SEDIMENT OR DEBRIS ADVERSELY IMPACTS THE FUNCTION OF THE BMP.

**ESTIMATED TIME SCHEDULE:**

INSTALL BMP'S AUGUST 2024  
 ROADWAY GRADING AUGUST 2024  
 SEEDING & MULCHING AUGUST 2025  
 STABILIZATION SEPTEMBER 2026

**SILVERADO RANCH FILING NO. 2**



19 E. Willamette Ave.  
 Colorado Springs, CO 80903  
 PH: 719-477-9429  
 FAX: 719-471-0766  
 www.jpsegr.com



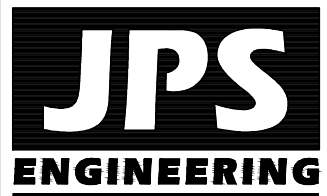
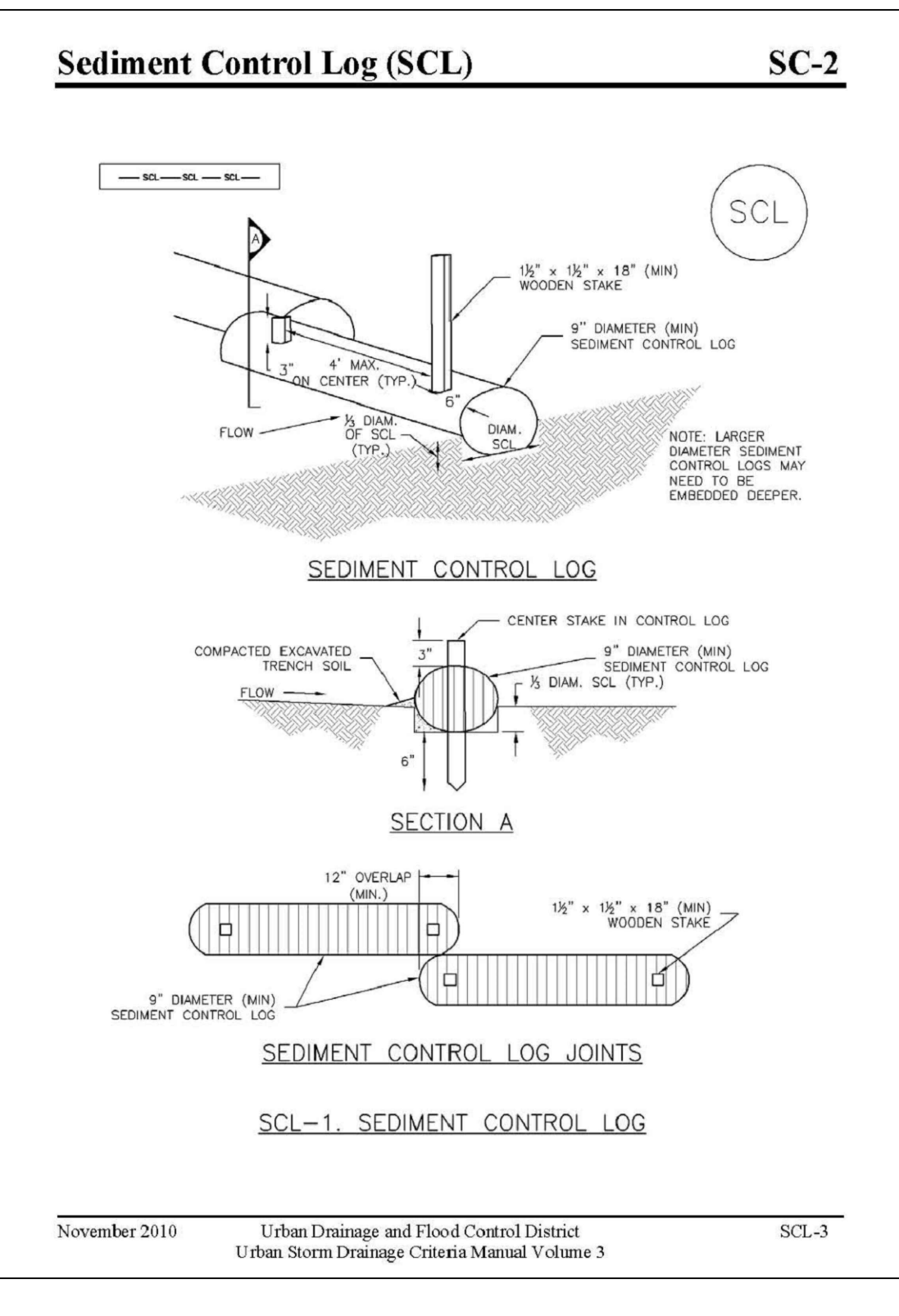
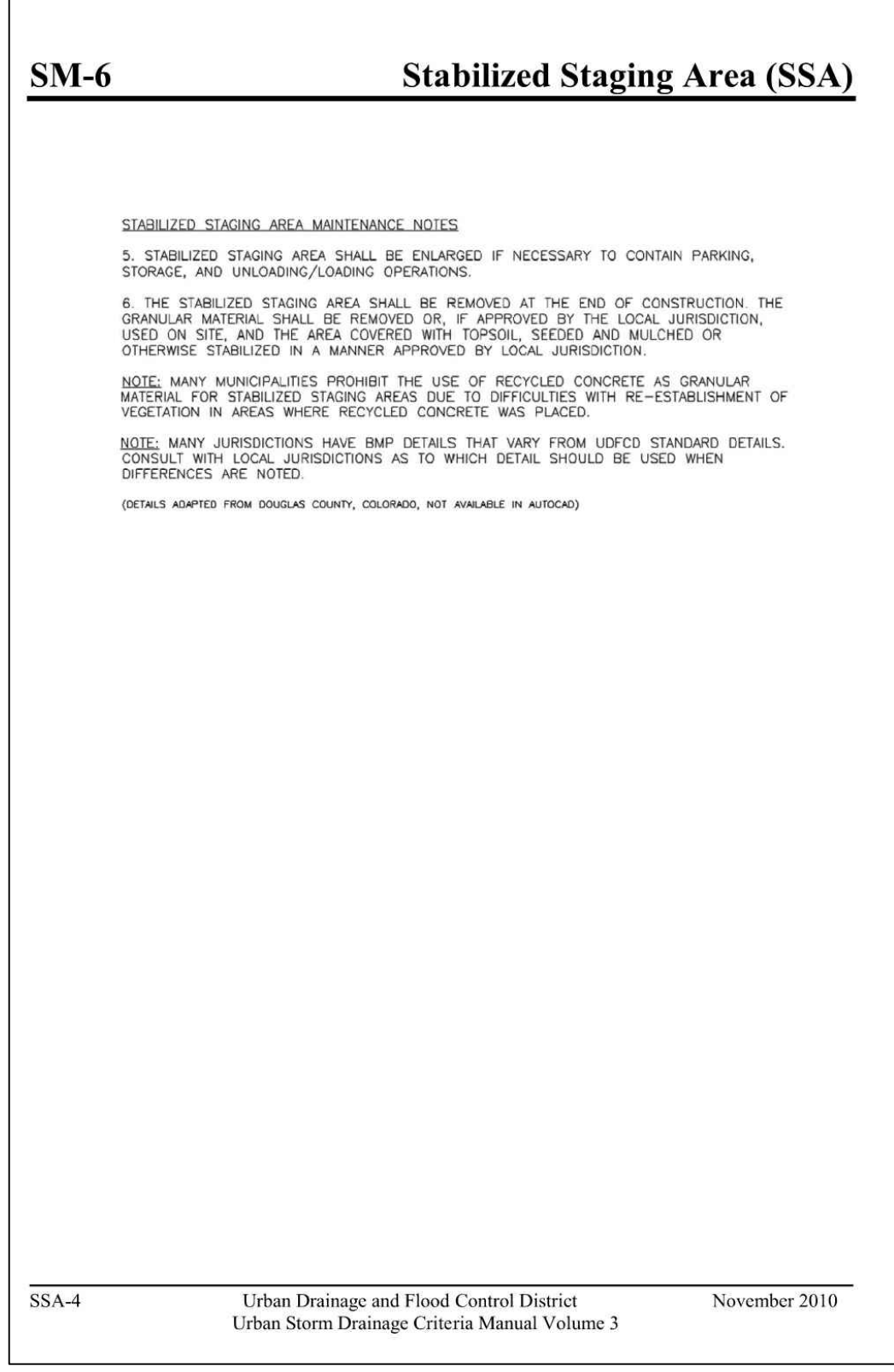
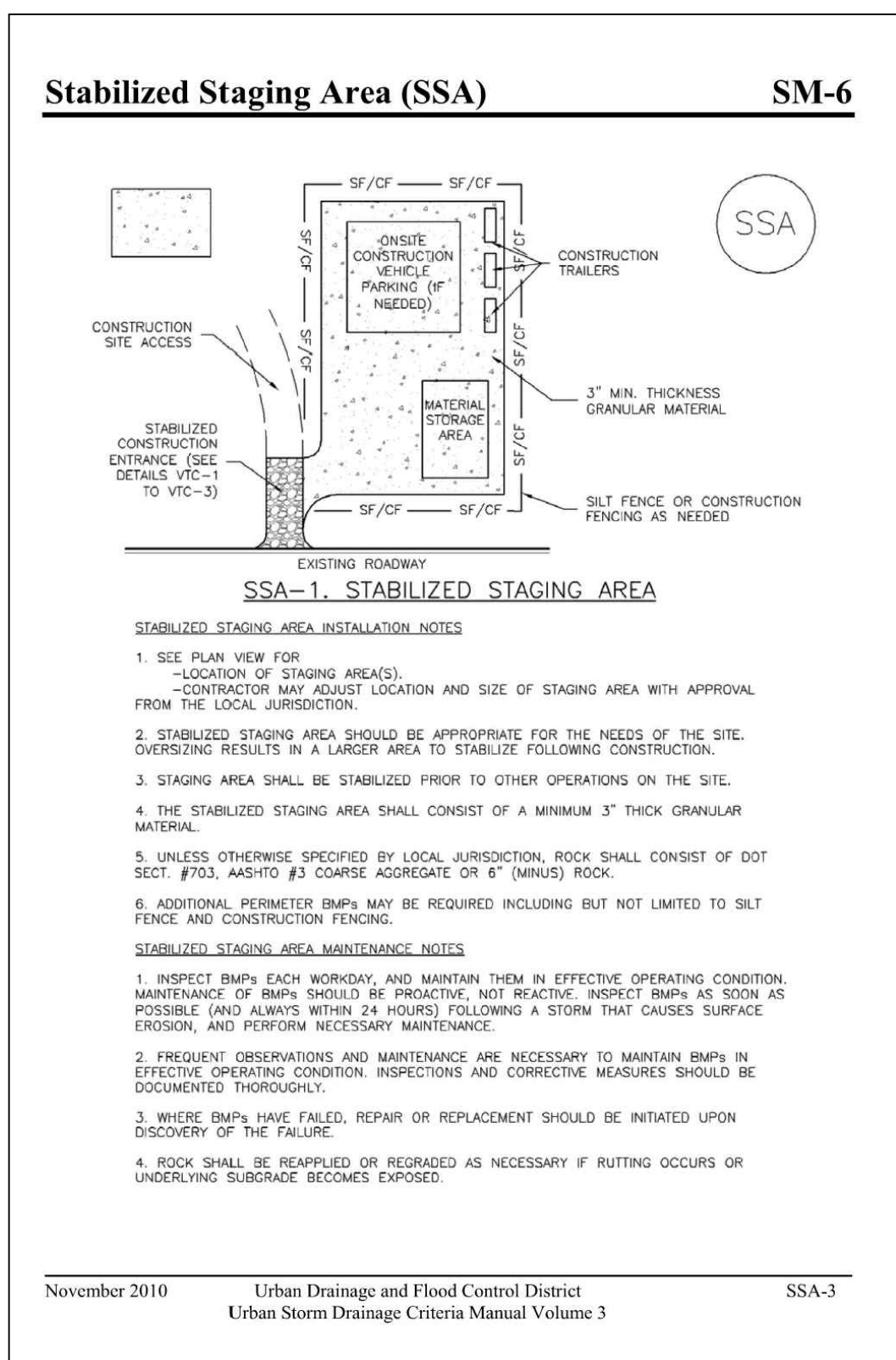
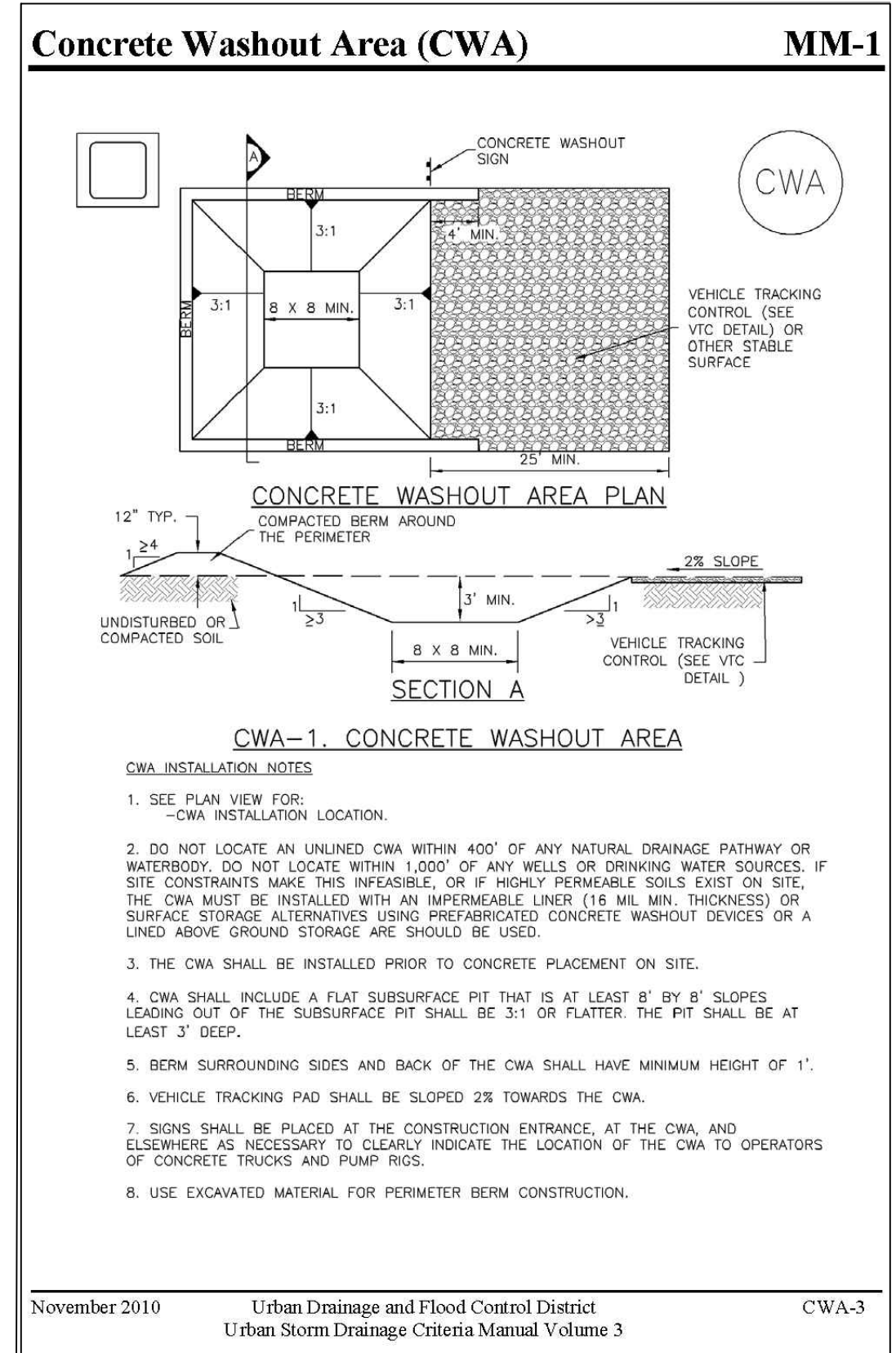
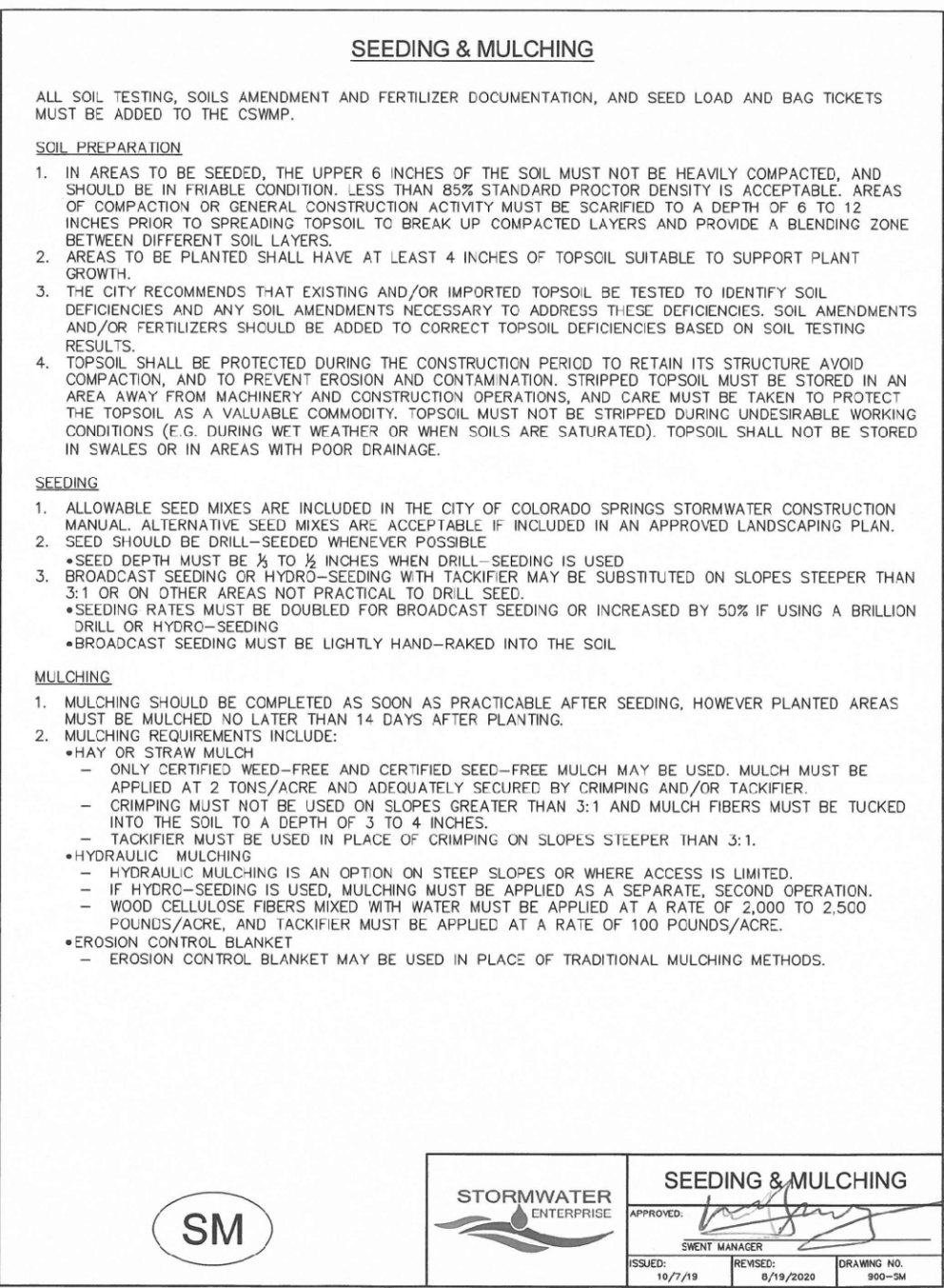
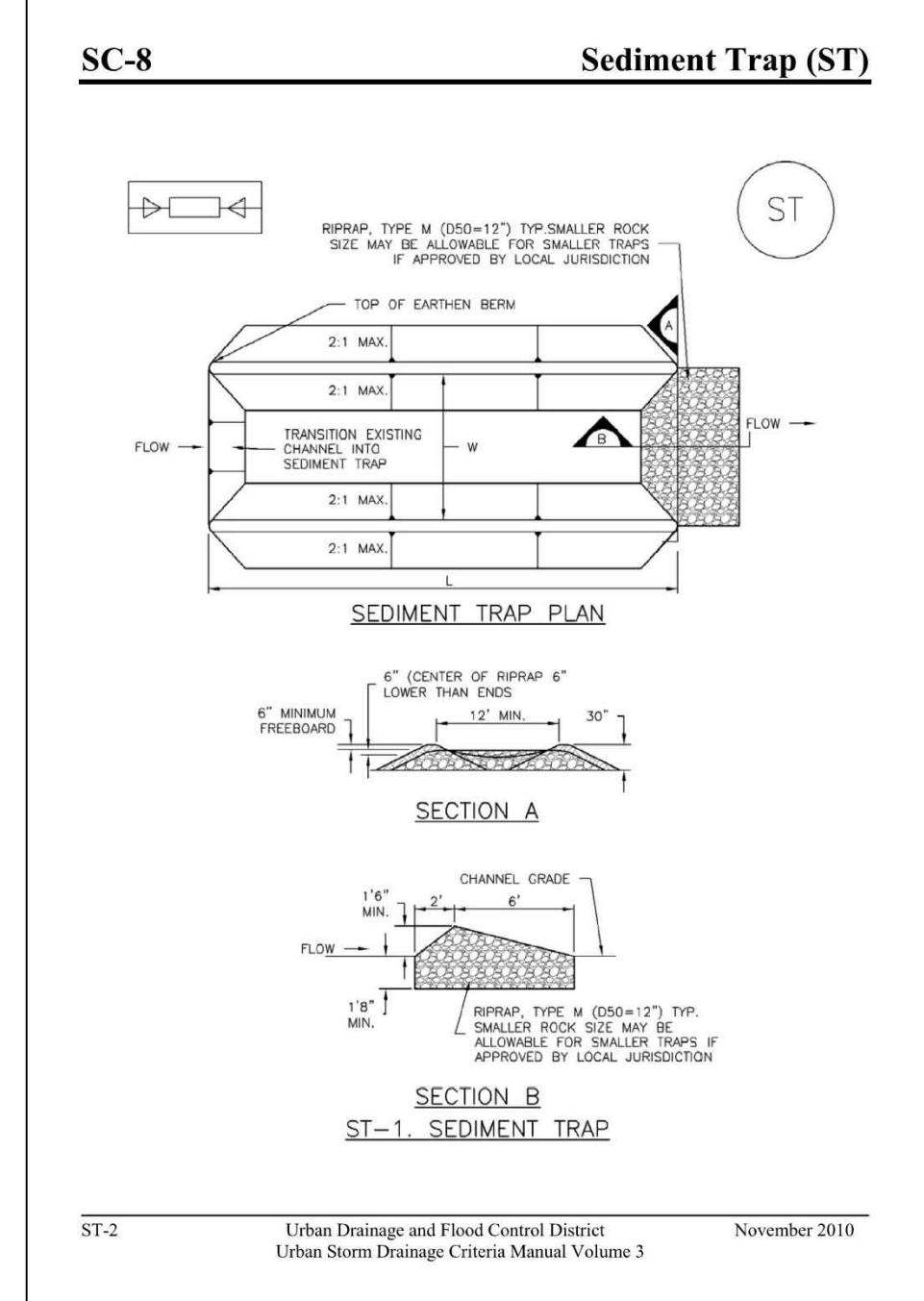
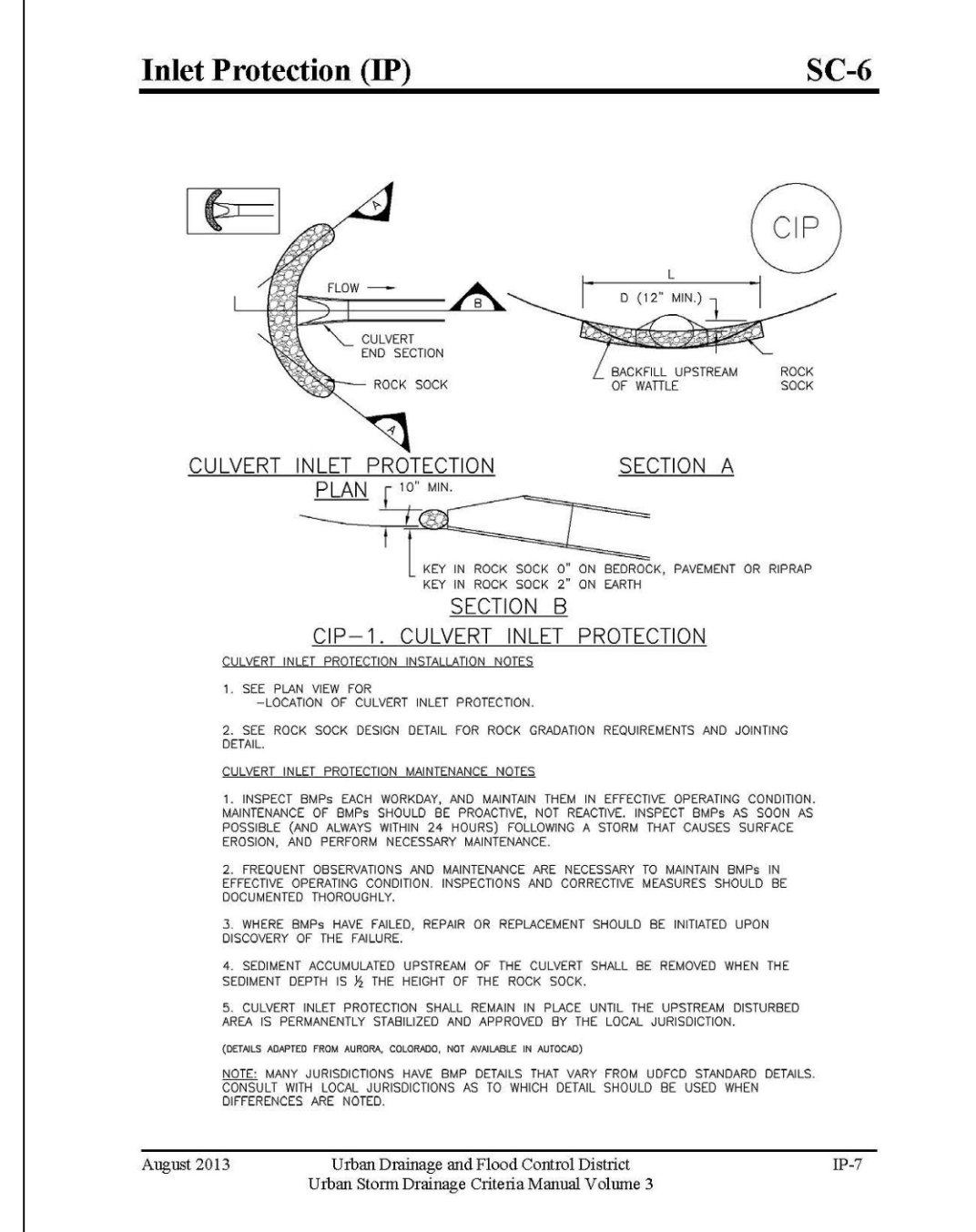
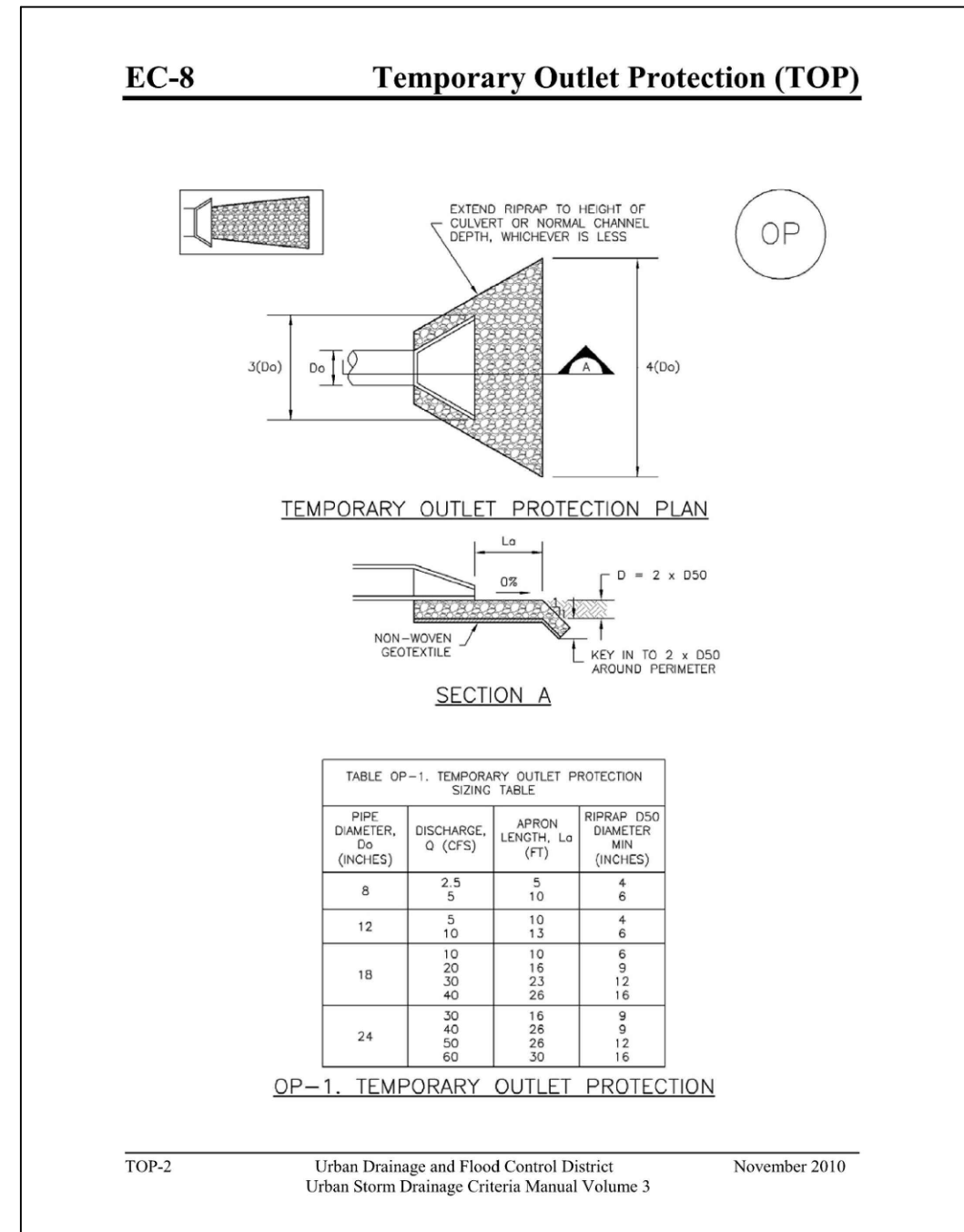
CALL UTILITY NOTIFICATION CENTER OF COLORADO  
 1-800-922-1987  
 CALL 2-BUSINESS DAYS IN ADVANCE BEFORE YOU CUT, GRADE, OR EXCAVATE FOR THE MARKING OF UNDERGROUND MEMBER UTILITIES.

NO.	REVISION	BY	DATE

**EROSION CONTROL NOTES AND DETAILS**

HORIZ. SCALE: N/A	DRAWN: MSP
VERT. SCALE: N/A	DESIGNED: JPS
SURVEYED: N/A	CHECKED: JPS
CREATED: 11/29/21	LAST MODIFIED: 06/07/24
PROJECT NO: 080603	MODIFIED BY: pv

SHEET: C2.1



19 E. Willamette Ave.  
Colorado Springs, CO  
80903

PH: 719-477-9429  
FAX: 719-471-0766  
www.jsengr.com



CALL UTILITY NOTIFICATION  
CENTER OF COLORADO  
1-800-922-1987  
CALL 2-BUSINESS DAYS IN ADVANCE  
BEFORE YOU DIG, GRADE, OR EXCAVATE  
FOR THE MARKING OF UNDERGROUND  
MEMBER UTILITIES.

No.	REVISION	BY	DATE

EROSION CONTROL  
DETAILS

HORIZ. SCALE:	N/A	DRAWN:	MSP
VERT. SCALE:	N/A	DESIGNED:	JPS
SURVEYED:	N/A	CHECKED:	JPS
CREATED:	11/29/21	LAST MODIFIED:	06/07/24
PROJECT NO:	080603	MODIFIED BY:	PV

C2.2