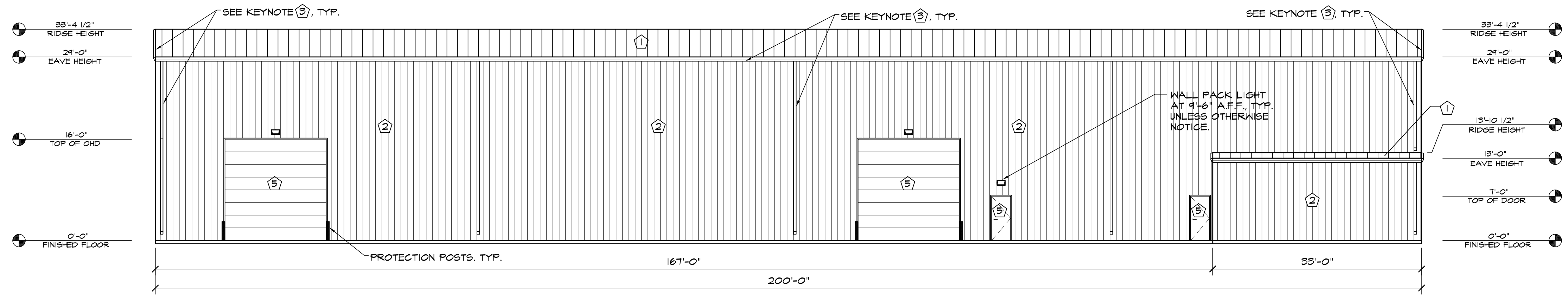
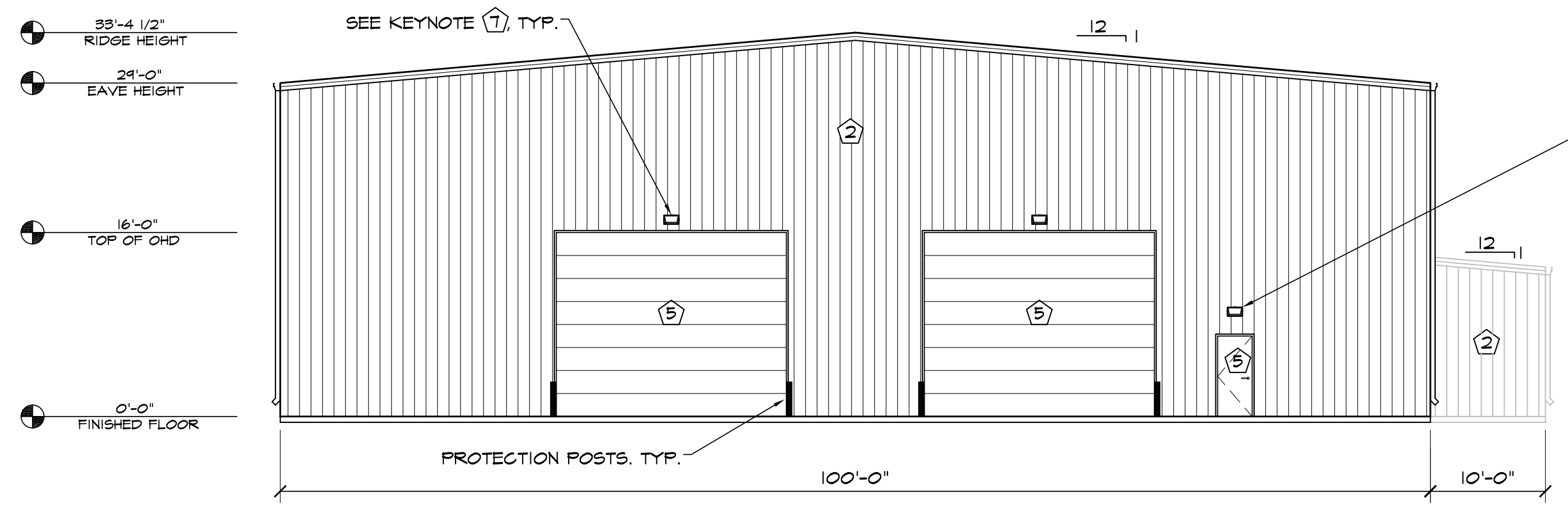


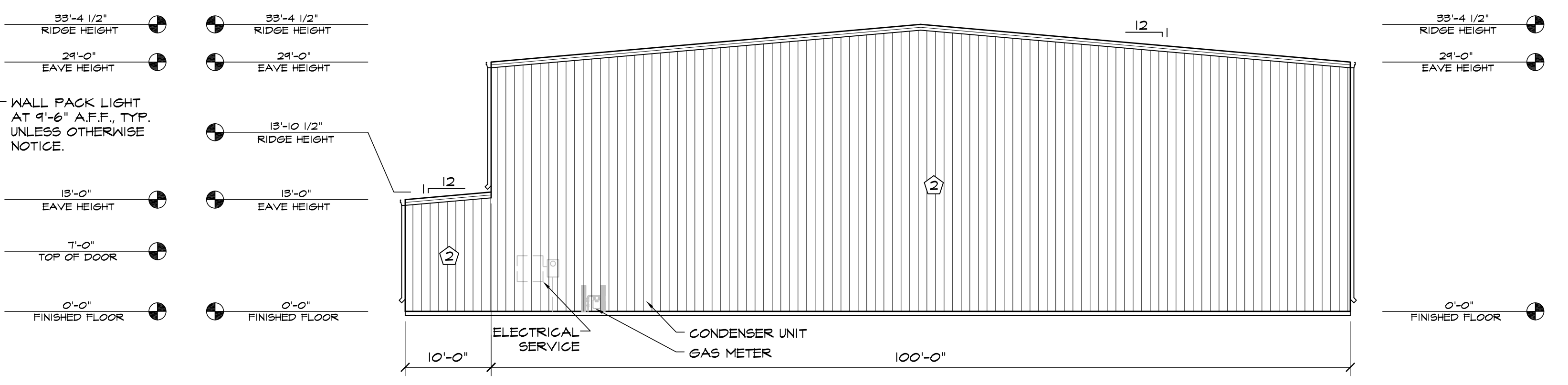
ELEVATION KEY NOTES	
①	PREFINISHED 24 GA. "PBR" METAL ROOF PANELS BY METAL BUILDING PROVIDER - COLOR TBD
②	PREFINISHED 26 GA. "PBR" METAL WALL PANELS BY METAL BLDG PROVIDER - COLOR TBD
③	PREFINISHED GUTTER & DOWNSPOUTS BY METAL BUILDING PROVIDER - COLOR TBD
④	3/4" STUCCO FINISH SYS. WITH EXPANSION JOINT - 120 SF MAX AREA - COLOR TBD
⑤	SEE SCHEDULES ON "A" SHEETS FOR ALL DOOR & WINDOW INFORMATION
⑥	STONE VENEER
⑦	WALL PACK LIGHT - TOP OF LIGHT @ 17'-6" A.F.F. UNLESS OTHERWISE NOTED (FULL CUT-OFF FIX)



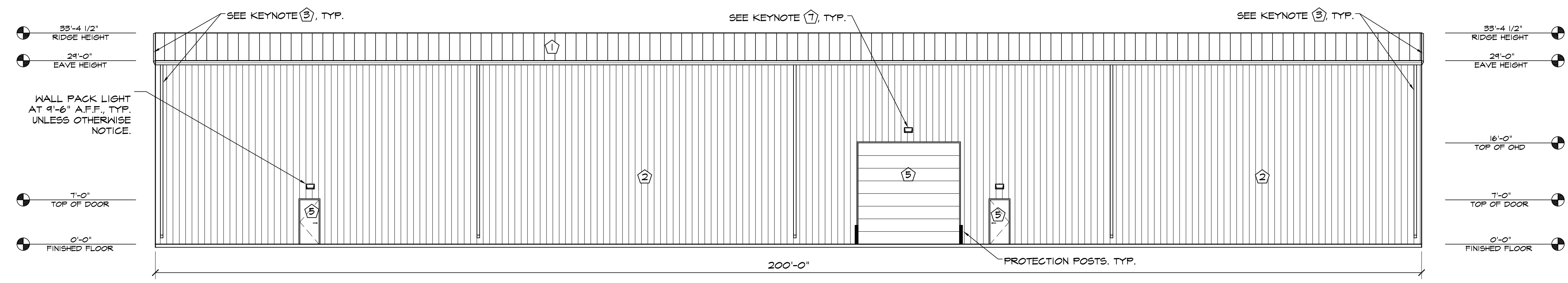
1 SOUTH ELEVATION
SCALE: 3/32"=1'-0"



3 WEST ELEVATION
SCALE: 3/32"=1'-0"



2 EAST ELEVATION
SCALE: 3/32"=1'-0"

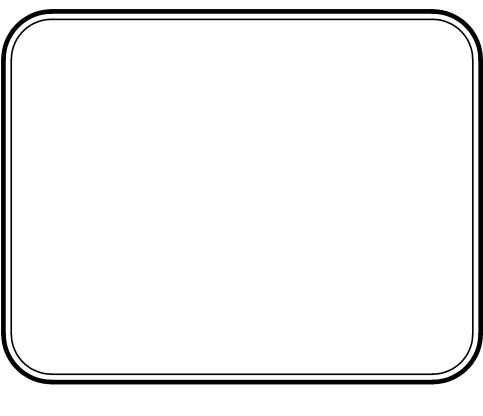
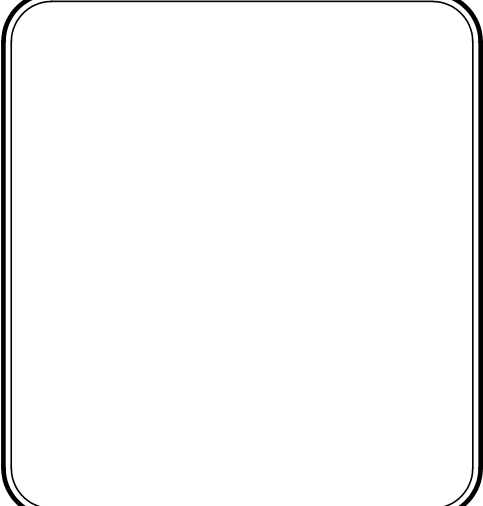


4 NORTH ELEVATION
SCALE: 3/32"=1'-0"

HAMMERS CONSTRUCTION INC.
COMMERCIAL GENERAL CONTRACTORS SPECIALIZING IN DESIGN/BUILD
PRESIDENT: STEVE R. HAMMERS
VICE PRES: DAVID J. HAMMERS
1411 WOOLSEY HEIGHTS
COLORADO SPRINGS, CO 80915
(719) 570-1589 FAX (719) 570-7008
www.hammersconstruction.com

THIS DRAWING CONTAINS MATERIAL & INFORMATION WHICH MAY NOT BE REPRODUCED WITHOUT WRITTEN CONSENT OF HAMMERS CONSTRUCTION INC. THESE DRAWINGS ARE INTENDED TO BE USED ONLY BY HAMMERS CONSTRUCTION & ITS REPRESENTATIVES. THESE DRAWINGS HAVE NOT BEEN PREPARED FOR ANY OTHER PURPOSE THAN TO INDICATE THE GENERAL FEATURES AND PLACEMENT OF THE PROPOSED PROJECT. COPYRIGHT © 2020 HAMMERS CONSTRUCTION

INTELIFAB
NEW MANUFACTURING BLDG
CATTLEMEN RUN
ELLICOTT, CO 80808
EL PASO COUNTY, COLORADO



DATE: MAR. 31, 2020
DRAWN BY: W. VENEROS
PROJ. MGR: R. GREEN
SCALE: SEE PLAN
APPROVED BY:
JOB NO: 1111

△ SUBMITTALS:

△	12-8-20 / COMMENTS 4-24-20
△	
△	
△	
△	