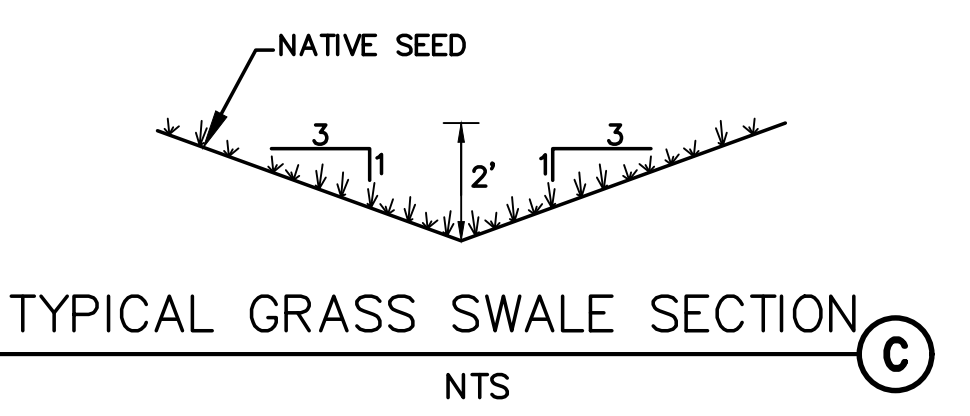
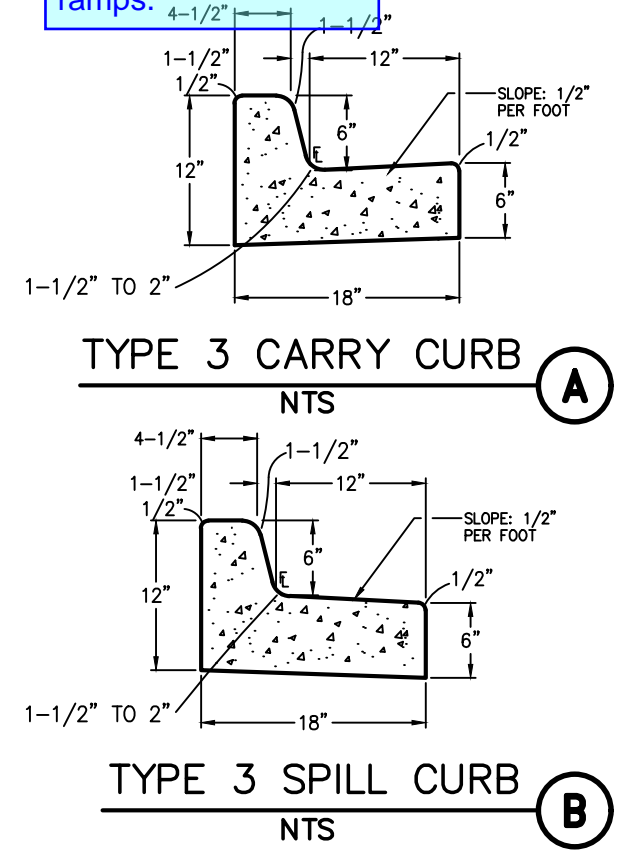
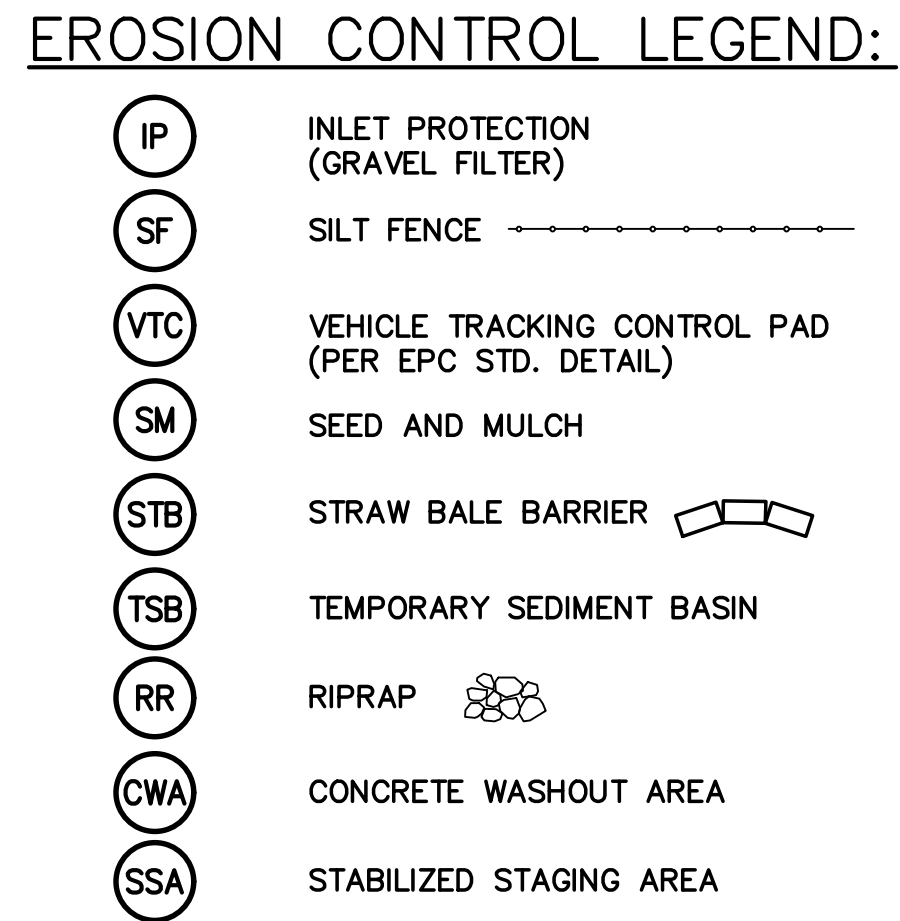
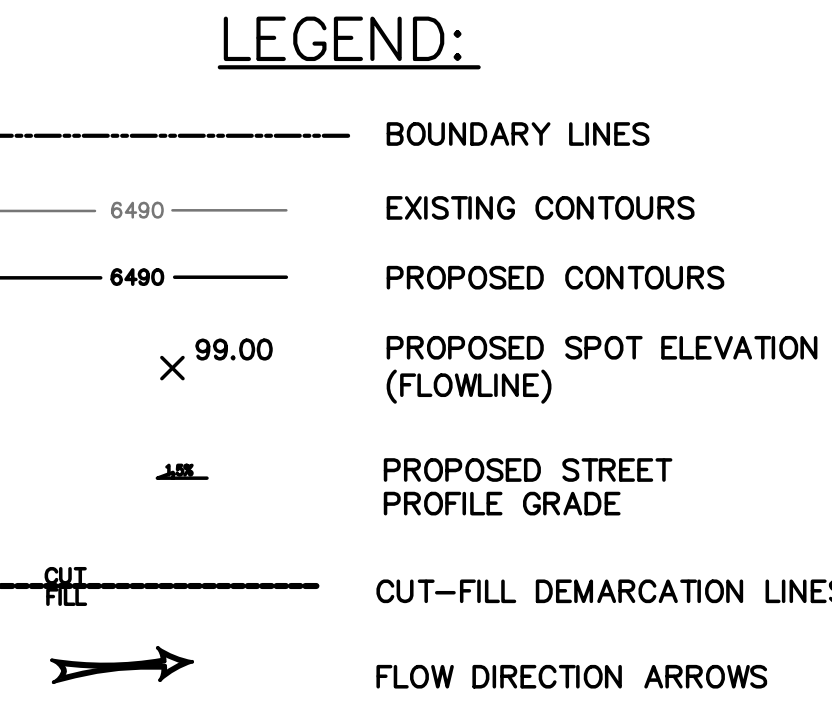
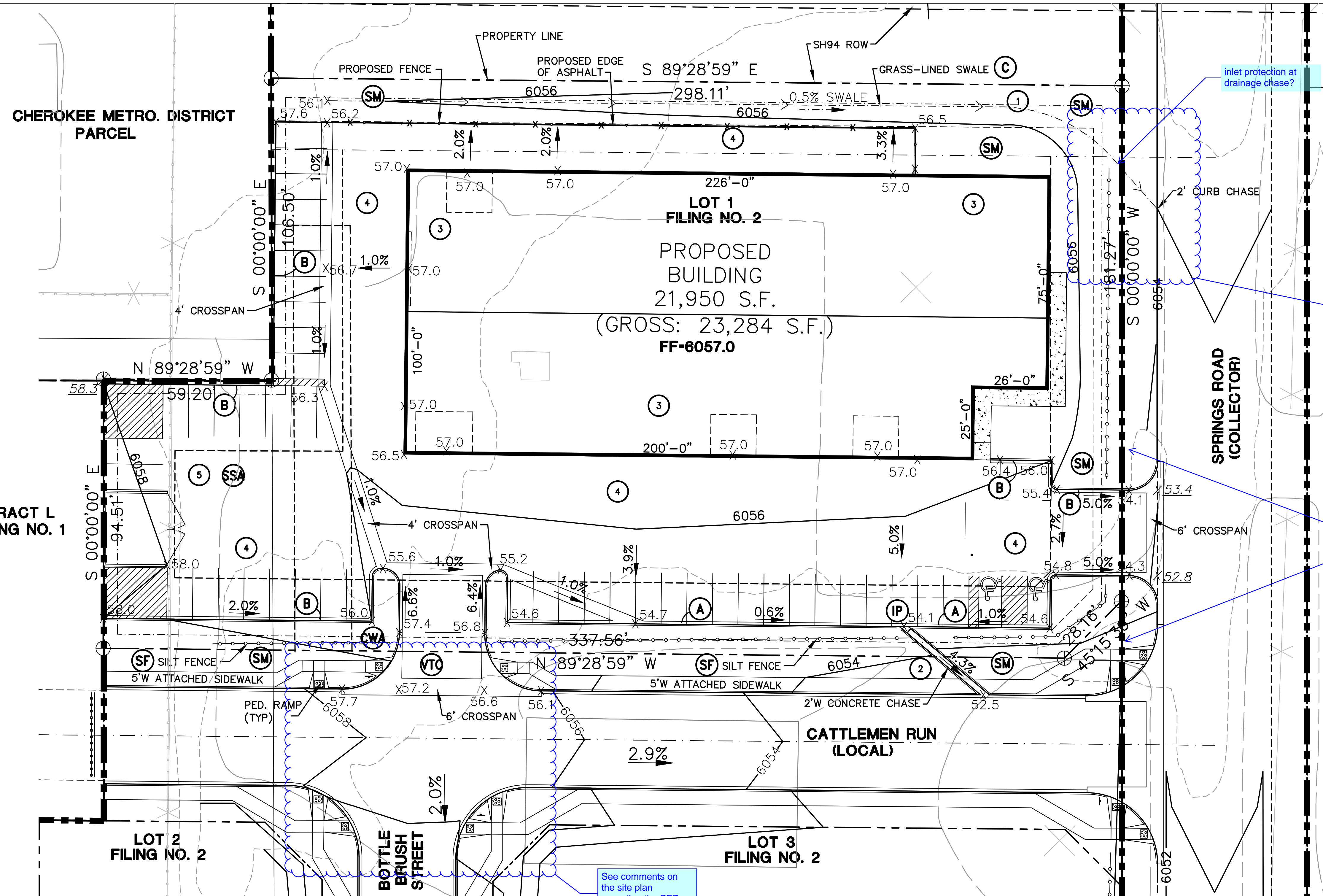


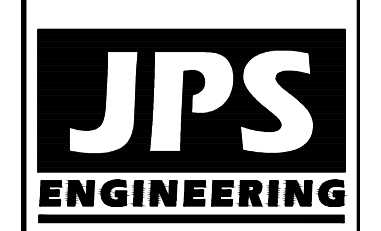
C:\Users\Owner\Desktop\projects\090001\Intelfab\Intelfab\C1.1.dwg Mar 28, 2020 - 6:02pm



GRADING & EROSION CONTROL (GEC) PLAN SHEET INDEX

C1.1 SITE GRADING & EROSION CONTROL PLAN
 C2.1 CIVIL NOTES & DETAILS
 C2.2 EROSION CONTROL NOTES & DETAILS

NOTE: STORMWATER DETENTION AND WATER QUALITY FOR THIS SITE (INCLUDING TEMPORARY SEDIMENT BASIN) IS PROVIDED IN OFF-SITE DETENTION POND C2.8



19 E. Willamette Ave.
 Colorado Springs, CO 80903
 PH: 719-477-9429
 FAX: 719-471-0766



CALL UTILITY NOTIFICATION CENTER OF COLORADO
 1-800-922-1987
 BEFORE YOU DIG, GRADE, OR EXCAVATE FOR THE MARKING OF UNDERGROUND MEMBER UTILITIES.

Please depict the drainage chase and curb opening as shown in the chase along Cattlemen Run. Additionally provide the County standard detail for both of the proposed curb chases.

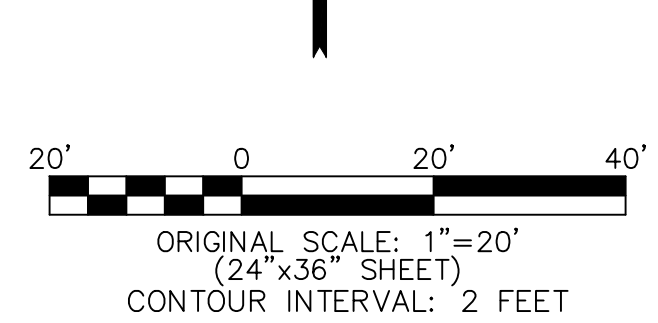
Please show the sidewalk along the west side of Springs Road. The road will be built to urban non-residential collector standards with the final plat applications.

KEYED NOTES:

- 1 TOPSOIL & STRIPPINGS STOCKPILE AREA (SP)
- 2 CONTRACTOR MAY WASTE EXCESS CUT MATERIAL OR BORROW SUITABLE FILL MATERIAL FROM THIS AREA. MAINTAIN POSITIVE DRAINAGE & MATCH INTO EXISTING GRADES WITH 3:1 MAX. SLOPE.
- 3 PREPARE AND COMPACT BUILDING FOUNDATION & SLAB PER PROJECT GEOTECHNICAL REPORT
- 4 PARKING LOT PAVING PER GEOTECHNICAL REPORT (4" ASPHALT OVER 6" AGGREGATE BASE UNLESS NOTED OTHERWISE)
- 5 STORAGE AREA FOR BUILDING MATERIALS, EQUIPMENT, CONSTRUCTION WASTE, & STOCKPILES (CONTRACTOR MAY ADJUST AS NEEDED)

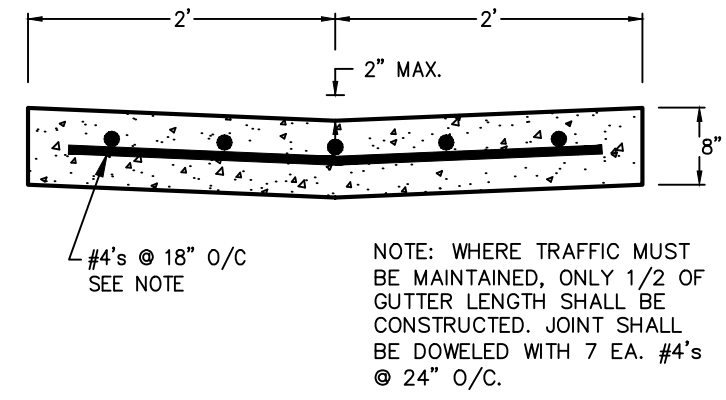
INTELFAB LOT 1, MAYBERRY, COLORADO SPRINGS, FIL. NO. 2

SITE GRADING & EROSION CONTROL PLAN

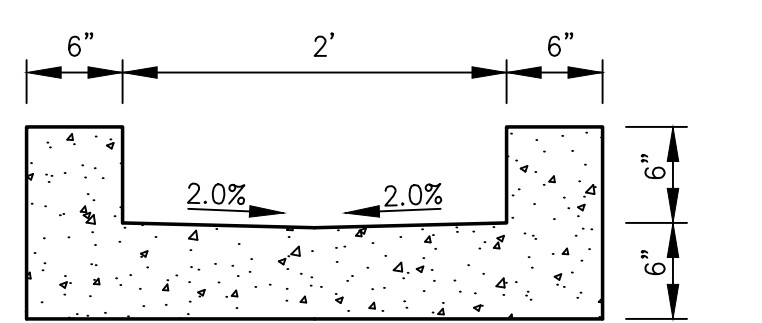


DATE	
BY	
REVISION	
No.	

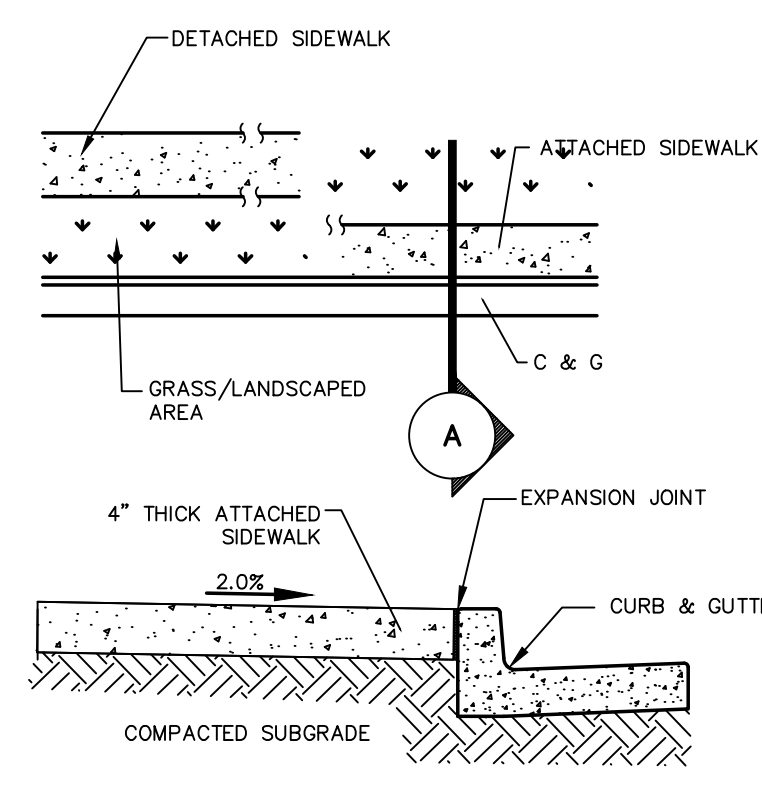
DRAWN: BJJ
 DESIGNED: JPS
 CHECKED: JPS
 LAST MODIFIED: 3/30/20
 MODIFIED BY: BJJ



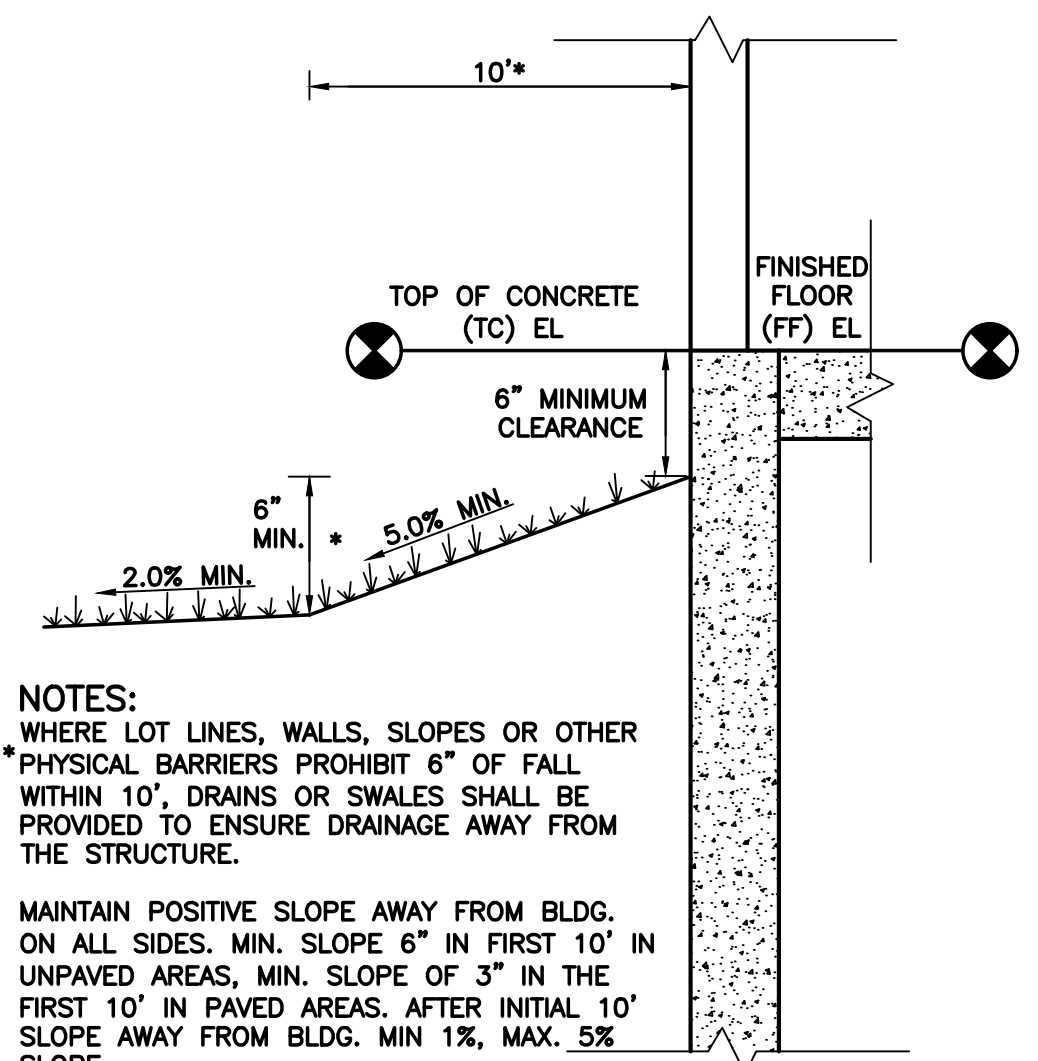
TYPICAL CONCRETE CROSSSPAN (A)
SCALE: 1" = 1'-0"



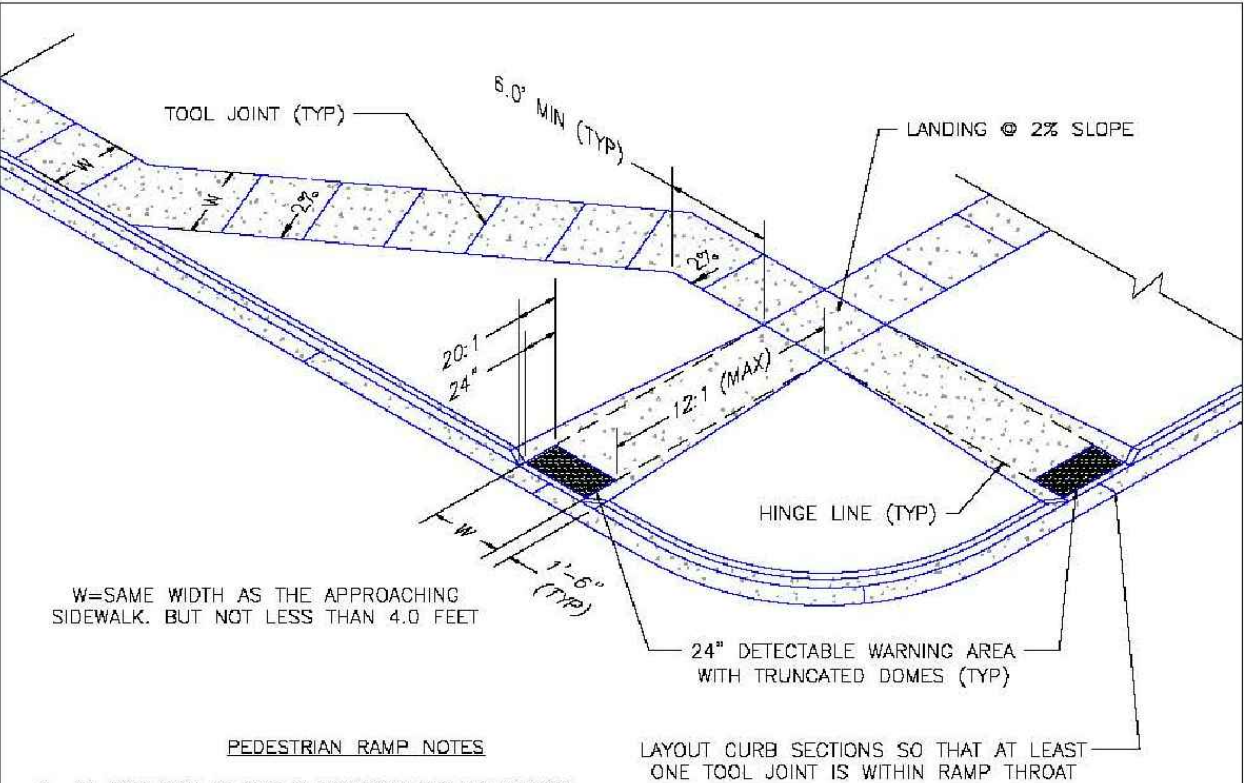
CURB CHASE SECTION (C)
SCALE: 1"=1' H&V



CONCRETE SIDEWALK DETAIL (B)
N.T.S.



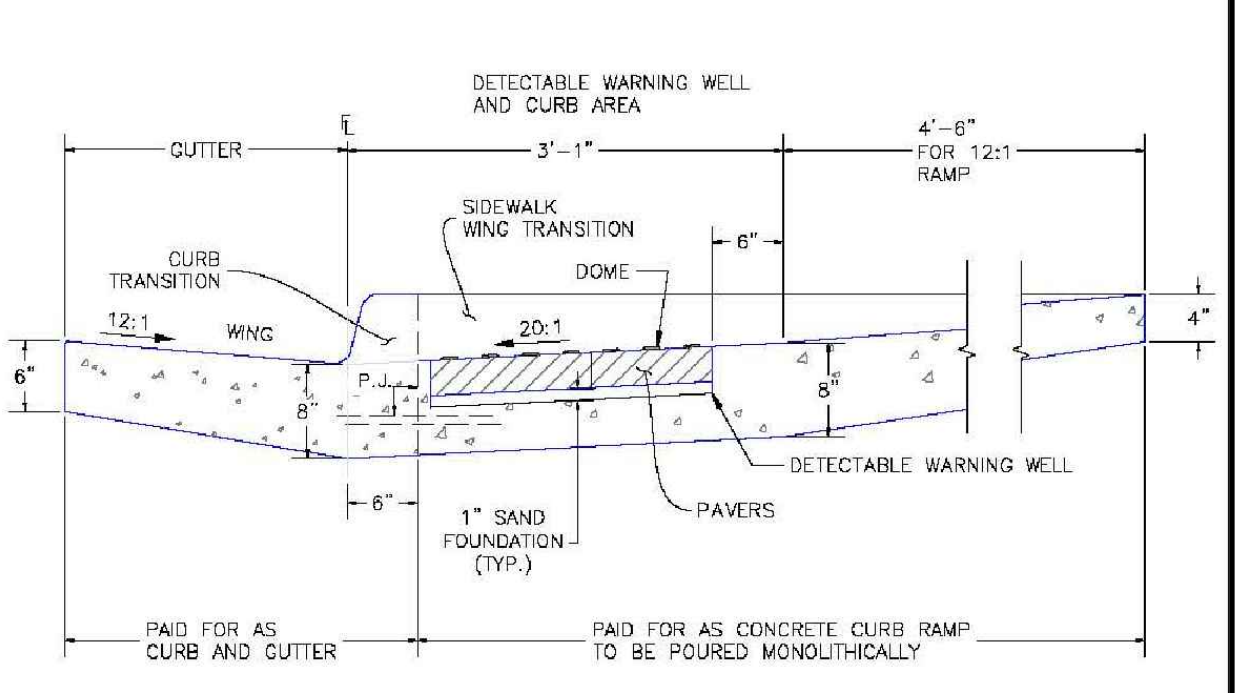
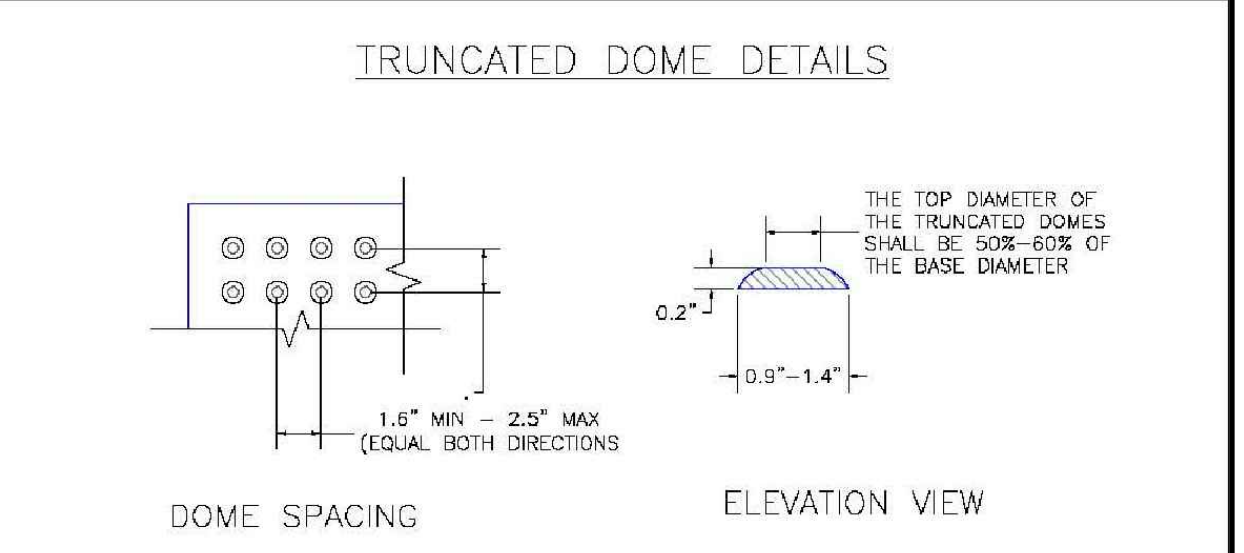
TYPICAL BUILDING DRAINAGE DETAIL (D)
SCALE: NTS



7/9/09
DATE APPROVED: André P. Brackin
DEPARTMENT OF TRANSPORTATION

Pedestrian Intersection Ramp
Standard Drawing
REVISION DATE: 12/8/15
FILE NAME: SD_2-41

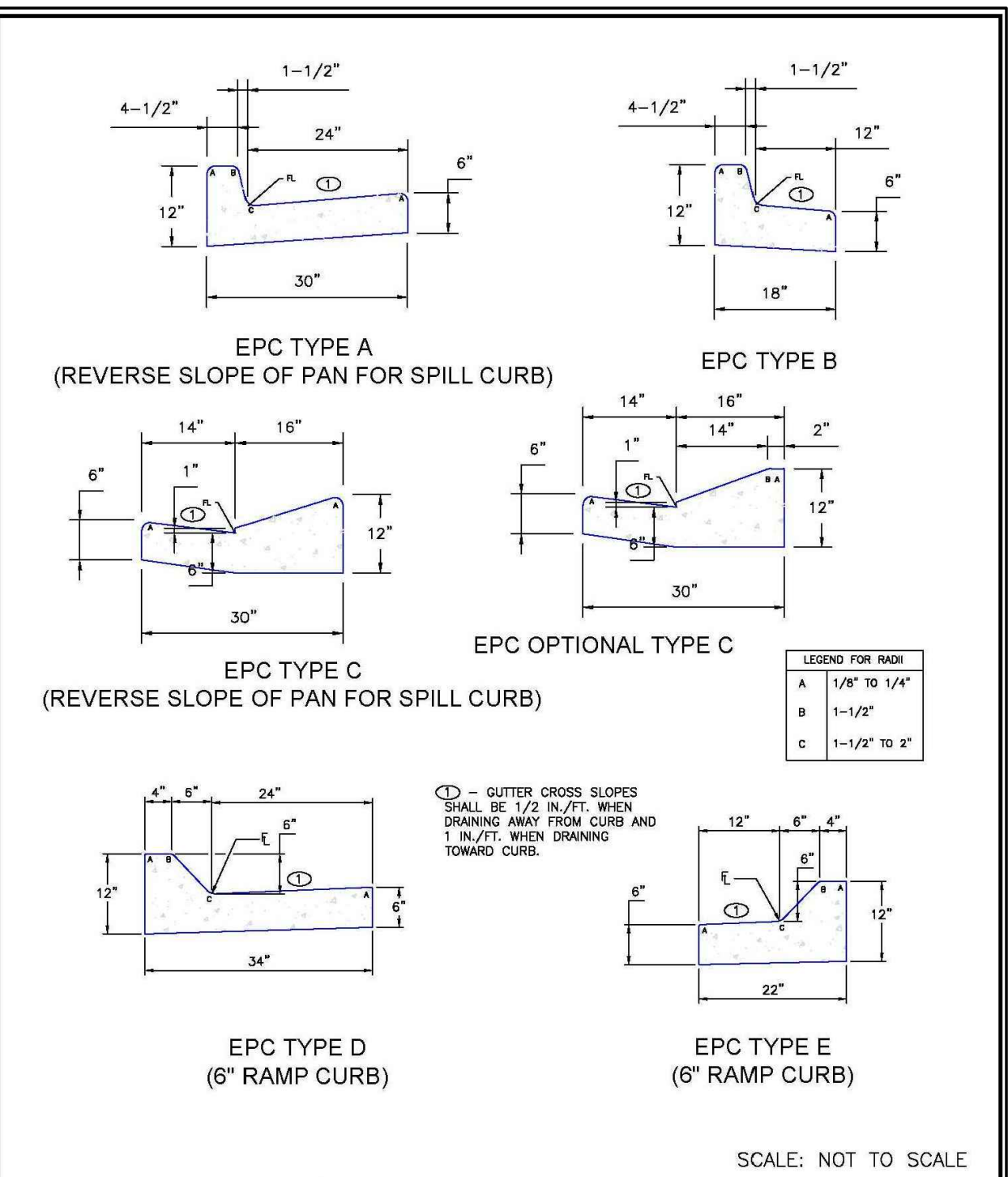
EL PASO COUNTY
DEPARTMENT OF TRANSPORTATION



1/1/08
DATE APPROVED: John A. McCarty
DEPARTMENT OF TRANSPORTATION

Truncated Dome Details
Standard Drawing
REVISION DATE: 11/25/15
FILE NAME: SD_2-42

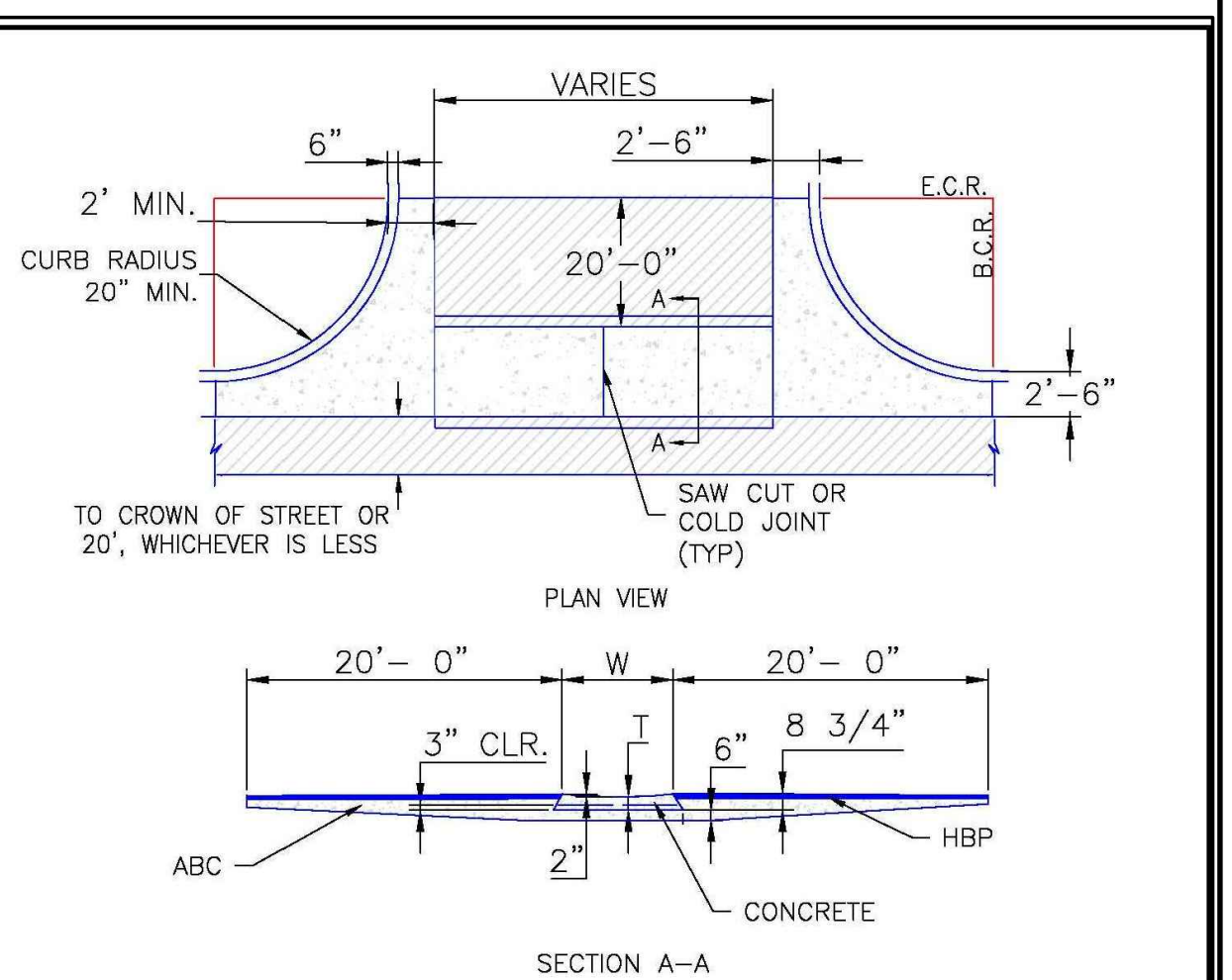
EL PASO COUNTY
DEPARTMENT OF TRANSPORTATION



8/11/11
DATE APPROVED: André P. Brackin
DEPARTMENT OF TRANSPORTATION

Typical Curb and Gutter Details
Standard Drawing
REVISION DATE: 12/8/15
FILE NAME: SD_2-20

EL PASO COUNTY
DEPARTMENT OF TRANSPORTATION



8/11/11
DATE APPROVED: André P. Brackin
DEPARTMENT OF TRANSPORTATION

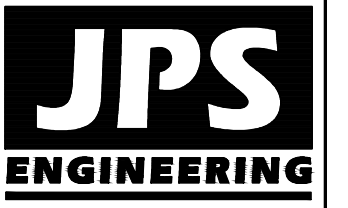
Typical Cross Pan Layout Detail
Standard Drawing
REVISION DATE: 12/8/15
FILE NAME: SD_2-26

EL PASO COUNTY
DEPARTMENT OF TRANSPORTATION

GENERAL CIVIL NOTES:

- All construction shall meet the following standards & specifications:
 - 2009 International Building Code.
 - Pikes Peak Regional Building Code, latest edition.
 - El Paso County Engineering Criteria Manual (ECM), latest edition.
 - Project Geotechnical Report.
- The contractor shall be responsible for the notification and field location of all existing utilities, whether shown on the plans or not, before beginning construction. Location of existing utilities shall be verified by the contractor prior to actual construction.
- The contractor shall have one (1) signed copy of these approved plans and one (1) copy of the appropriate design and construction standards and specifications at the job site at all times:
 - El Paso County Engineering Criteria Manual.
- Storm drain pipe shall be rcp class iii with class c bedding unless otherwise noted.
- Stationing is at centerline unless otherwise noted. All elevations are at flowline unless otherwise noted. All dimensions are from face of curb unless otherwise noted. Lengths shown for storm sewer pipes are to center of manhole.
- Contractor shall coordinate with gas, electric, telephone and cable t.v. Utility suppliers for installation of all utilities. Minimum cover for all dry utilities shall be 36".
- Contractor shall remove and dispose of all existing structures, debris, waste and other unsuitable fill material found within the limits of excavation.
- Match into existing grades at 3:1 max cut and fill slopes.
- Revegetation of all disturbed areas shall be done with 4" topsoil and dry land grass seed after fine grading is complete ("foothills seed mix").
- Erosion control shall consist of silt fence and hay bales as shown on the drawing, and topsoil with grass seed, which will be watered until vegetation has been re-established.
- The erosion control measures outlined on this plan are the responsibility of the contractor to monitor and replace, regrade, and rebuild as necessary until vegetation is re-established.
- Contractor shall implement best management practices in a manner that will protect adjacent properties and public facilities from the adverse effects of erosion and sedimentation as a result of construction and earthwork activities within the project site.
- Additional erosion control measures may be required as determined by site conditions.
- The contractor will take the necessary precautions to protect existing utilities from damage due to this operation. Any damage to the utilities will be repaired at the contractor's expense, and any service disruption will be settled by the contractor.
- All backfill, sub-base, and/or base course material shall be compacted per the project geotechnical report and County specifications.
- Concrete used in curb and gutter, sidewalk, and crosspan construction shall meet County criteria.
- All finished grades shall have a minimum 1.0% slope to provide positive drainage.
- Contractor shall obtain all required permits prior to beginning work.

INTELIFAB
LOT 1, MAYBERRY, COLORADO SPRINGS, FIL. NO. 2



19 E. Willamette Ave.
Colorado Springs, CO
80903
PH: 719-477-9429
FAX: 719-471-0766
www.jpsegr.com



CALL UTILITY NOTIFICATION
CENTER OF COLORADO
1-800-922-1987
CALL BEFORE YOU DIG
BEFORE YOU GRADE OR EXCAVATE
FOR THE MARKING OF UNDERGROUND
MEMBER UTILITIES.

No.	DATE	BY	REVISION
1	3/30/20	JPS	SDP SUBMITTAL

CIVIL NOTES &
DETAILS

HORZ. SCALE: N/A	DRAWN: BJJ
VERT. SCALE: N/A	DESIGNED: JPS
SURVEYED: RAMPART	CHECKED: JPS
CREATED: 3/28/20	LAST MODIFIED: 3/30/20
PROJECT NO: 090001	MODIFIED BY: BJJ

SHEET: C2.1

PCD PROJECT NO. PPR-20xx

C:\Users\Owner\Desktop\Projects\090001\Ellicott\CD\dwg\Civil\Intelifab\C2.1.dwg Mar 28, 2020 - 6:21pm

