

Chuck Broerman  
10/08/2021 08:44:28 AM  
Doc \$0.00  
Rec \$83.00

El Paso County, CO



8  
Pages 221714832

## SUBDIVISION/CONDOMINIUM PLAT

---

Reception Number	Date	Time
------------------	------	------

8

---

Reception Fee	Number of Pages	File Number
---------------	-----------------	-------------

Urban Collection at Palmer Village  
Name of Plat

Feathergrass Investments LLC  
Owner's Name

Subdivision

Condominium







# URBAN COLLECTION AT PALMER VILLAGE

SITUATED IN THE NORTHEAST QUARTER OF SECTION 5,  
TOWNSHIP 14 SOUTH, RANGE 65 WEST OF THE SIXTH PRINCIPAL MERIDIAN,  
COUNTY OF EL PASO, STATE OF COLORADO.

14832

POINT OF COMMENCEMENT  
(PARCEL D)

POINT OF BEGINNING

NORTH 1/4 CORNER  
SECTION 5, T14S, R65W, 6TH PM  
SECTION AND REBAR WITH 1-1/4" ALUMINUM CAP  
STAMPED "PLS 30829 SURVEON INC 2003"

SE 1/4 SEC. 32,  
T.13S., R.65W., SIXTH P.M.

EAST 1/16 CORNER  
SEC. 5, T14S, R65W, 6TH PM  
(ACTUAL LOCATION  
NOT MONUMENTED)

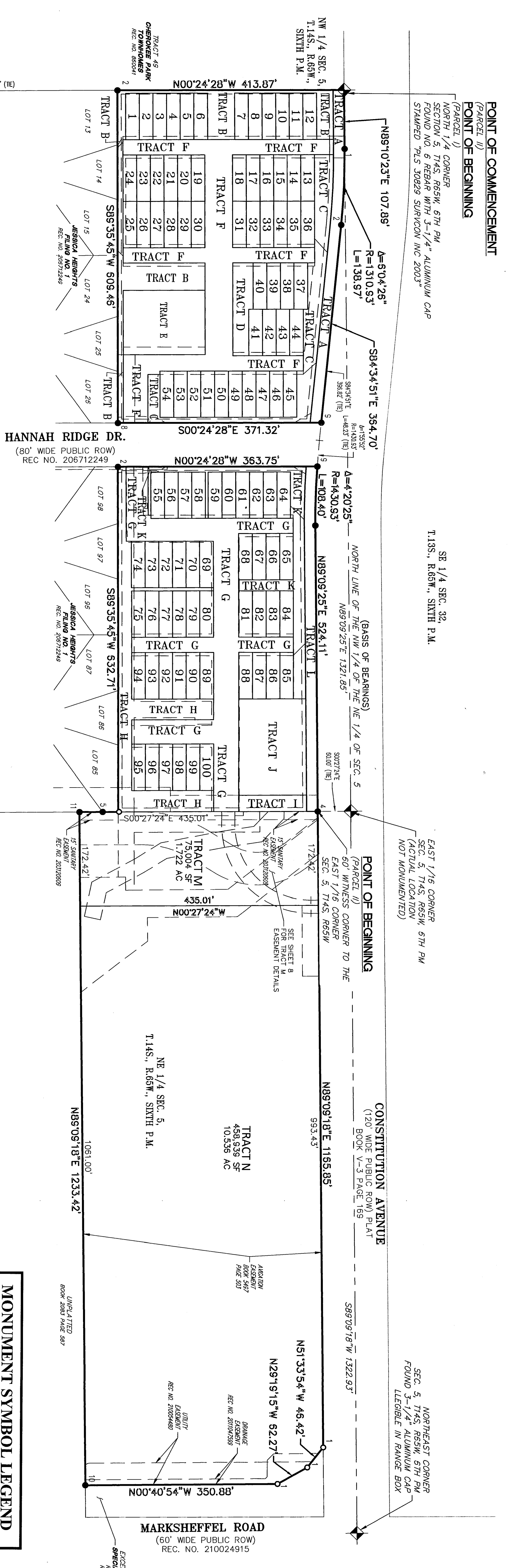
POINT OF BEGINNING  
(PARCEL D)

60' WITNESS CORNER TO THE  
EAST 1/16 CORNER  
SEC. 5, T14S, R65W

CONSTITUTION AVENUE  
(120' WIDE PUBLIC ROW) PLAT  
BOOK V-3 PAGE 169

NORTHEAST CORNER  
SEC. 5, T14S, R65W, 6TH PM  
FOUND  
LEGIBLE IN RANGE BOX

MARKSHEFFEL ROAD  
(60' WIDE PUBLIC ROW)  
REC. NO. 210024915

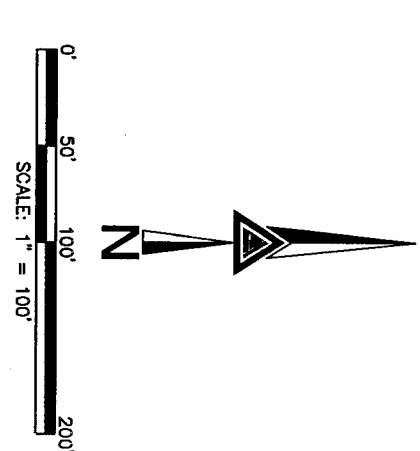


### MONUMENT SYMBOL LEGEND

- SECTION CORNER MONUMENT AS DESCRIBED
- SET NO. 5 REBAR WITH 1-1/4" YELLOW PLASTIC CAP
  - 1 1/2" WITNESS CORNER, ON LINE, STAMPED "AZTEC PLS 38367"
  - SET NO. 5 REBAR WITH 1-1/4" YELLOW PLASTIC CAP
  - STAMPED "AZTEC PLS 38367"
  - FOUND NO. 4 REBAR WITH 1" YELLOW PLASTIC CAP STAMPING ILLIGIBLE
  - FOUND NO. 4 REBAR - NO CAP
  - FOUND NO. 4 REBAR WITH 1" YELLOW PLASTIC CAP STAMPED "PLS 4842 WK CLARK"
  - FOUND NO. 6 REBAR - NO CAP
  - FOUND 1-1/2" WASHER STAMPED "PLS 25968 ON TOP OF WALL"
  - FOUND NO. 4 REBAR WITH 1" YELLOW PLASTIC CAP STAMPED "PLS 17665 WVE"
  - FOUND NO. 5 REBAR - NO CAP
  - FOUND NO. 5 REBAR WITH 1-1/4" YELLOW PLASTIC CAP STAMPED "AZTEC PLS 38367"
  - FOUND 1" BRASS DISK STAMPED "AZTEC LS 38367"
  - FOUND NO. 5 REBAR WITH 1-1/4" YELLOW PLASTIC CAP STAMPED "AZTEC PLS 36667"
  - FOUND 1" WITNESS CORNER WITH 1-1/4" ORANGE PLASTIC CAP STAMPED "PLS 38099"
  - (ROW) RIGHT-OF-WAY
  - (M) MEASURED DISTANCE
  - (R) RECORD DISTANCE PER SPECIAL WARRANTY DEED RECORDED AT RECEPTION NO. 212080370

TRACT	AREA (SQ.FT)	AREA (AC ±)	USE	OWNED BY / MAINTAINED BY
TRACT A	12,231	0.281	RIGHT OF WAY DEDICATION	EL PASO COUNTY *
TRACT B	22,663	0.521	OPEN SPACE, LANDSCAPE BUFFER, PEDESTRIAN CIRCULATION, RETENTION MAINTENANCE ACCESS, PUBLIC AND PRIVATE UTILITIES	PALMER VILLAGE DUXIE OWNERS ASSOCIATION, INC.
TRACT C	18,782	0.431	OPEN SPACE, LANDSCAPE SETBACK, PEDESTRIAN CIRCULATION, SIGNAGE, PUBLIC AND PRIVATE UTILITIES	PALMER VILLAGE DUXIE OWNERS ASSOCIATION, INC.
TRACT D	5,666	0.129	OPEN SPACE, PEDESTRIAN CIRCULATION, PUBLIC AND PRIVATE UTILITIES	PALMER VILLAGE DUXIE OWNERS ASSOCIATION, INC.
TRACT E	17,701	0.406	FULL SPECTRUM DETENTION, PUBLIC AND PRIVATE UTILITIES	PALMER VILLAGE DUXIE OWNERS ASSOCIATION, INC.
TRACT F	51,632	1.185	PRIVATE ROAD ACCESS, PARKING, PEDESTRIAN CIRCULATION, PUBLIC AND PRIVATE UTILITIES, & EMERGENCY ACCESS GATE	PALMER VILLAGE DUXIE OWNERS ASSOCIATION, INC.
TRACT G	51,480	1.182	PRIVATE ROAD ACCESS, PARKING, PEDESTRIAN CIRCULATION, PUBLIC AND PRIVATE UTILITIES, & EMERGENCY ACCESS GATE	PALMER VILLAGE DUXIE OWNERS ASSOCIATION, INC.
TRACT H	28,653	0.612	OPEN SPACE, LANDSCAPE SETBACK, LANDSCAPE BUFFER, PEDESTRIAN CIRCULATION, SIGNAGE, PUBLIC AND PRIVATE UTILITIES	PALMER VILLAGE DUXIE OWNERS ASSOCIATION, INC.
TRACT I	3,715	0.085	PUBLIC AND PRIVATE UTILITIES	PALMER VILLAGE DUXIE OWNERS ASSOCIATION, INC.
TRACT J	21,717	0.499	FULL SPECTRUM DETENTION, PUBLIC AND PRIVATE UTILITIES	PALMER VILLAGE DUXIE OWNERS ASSOCIATION, INC.
TRACT K	14,820	0.343	OPEN SPACE, LANDSCAPE SETBACK, PEDESTRIAN CIRCULATION, SIGNAGE, PUBLIC AND PRIVATE UTILITIES	PALMER VILLAGE DUXIE OWNERS ASSOCIATION, INC.
TRACT L	12,860	0.290	RIGHT OF WAY DEDICATION	EL PASO COUNTY *
TRACT M	75,004	1.722	FULL SPECTRUM DETENTION, DRAINAGE, EMERGENCY ACCESS, FUTURE DEVELOPMENT	FEATHERBRASS INVESTMENTS LLC / PALMER VILLAGE DUXIE OWNERS ASSOCIATION, INC.
TRACT N	458,839	10.536	FULL SPECTRUM DETENTION, DRAINAGE, EMERGENCY ACCESS, FUTURE DEVELOPMENT	FEATHERBRASS INVESTMENTS LLC / PALMER VILLAGE DUXIE OWNERS ASSOCIATION, INC.
LOTS	212,468	4.878		
TOTAL	1,006,209	23.100		

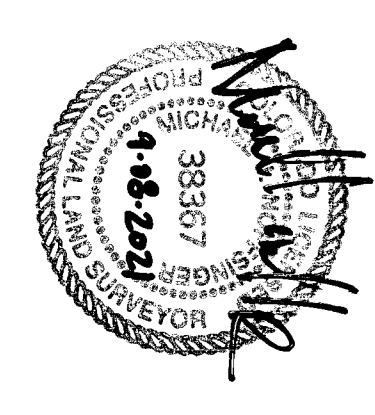
\* LANDSCAPE ADJACENT TO SUBJECT PROPERTY UP TO THE BACK OF CURB OF THE PUBLIC ROAD WILL BE MAINTAINED BY THE HOMEOWNERS ASSOCIATION.



**AZTEC CONSULTANTS, INC.**  
 310 East Harvard Ave, Suite 1  
 Denver, CO 80202  
 Phone: (303) 733-1897  
 Fax: (303) 733-1898  
 www.aztecconsultants.com

Drawn By: CWB

**DEVELOPER**  
**RICHMOND AMERICAN HOMES**  
 OF COLORADO, INC., A DELTAWARE CORP.  
 4350 S. MONACO ST.  
 DENVER, CO 80237



FOR AND ON BEHALF OF  
AZTEC CONSULTANTS, INC.

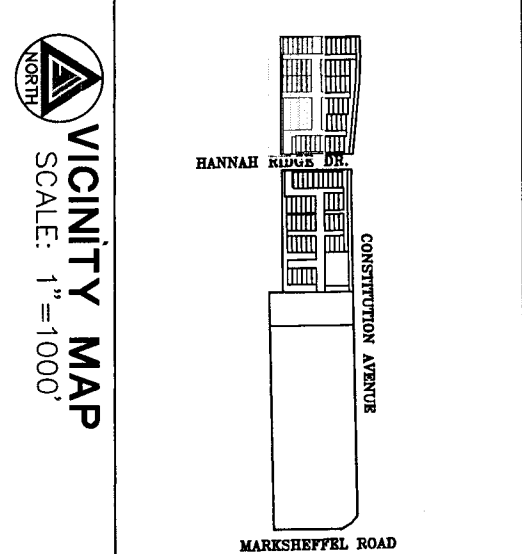
DATE OF PREPARATION:	03-19-2020
SCALE:	1" = 60'
SHEET:	3 OF 8



# URBAN COLLECTION AT PALMER VILLAGE

SITUATED IN THE NORTHEAST QUARTER OF SECTION 5,  
TOWNSHIP 14 SOUTH, RANGE 65 WEST OF THE SIXTH PRINCIPAL MERIDIAN,  
COUNTY OF EL PASO, STATE OF COLORADO.

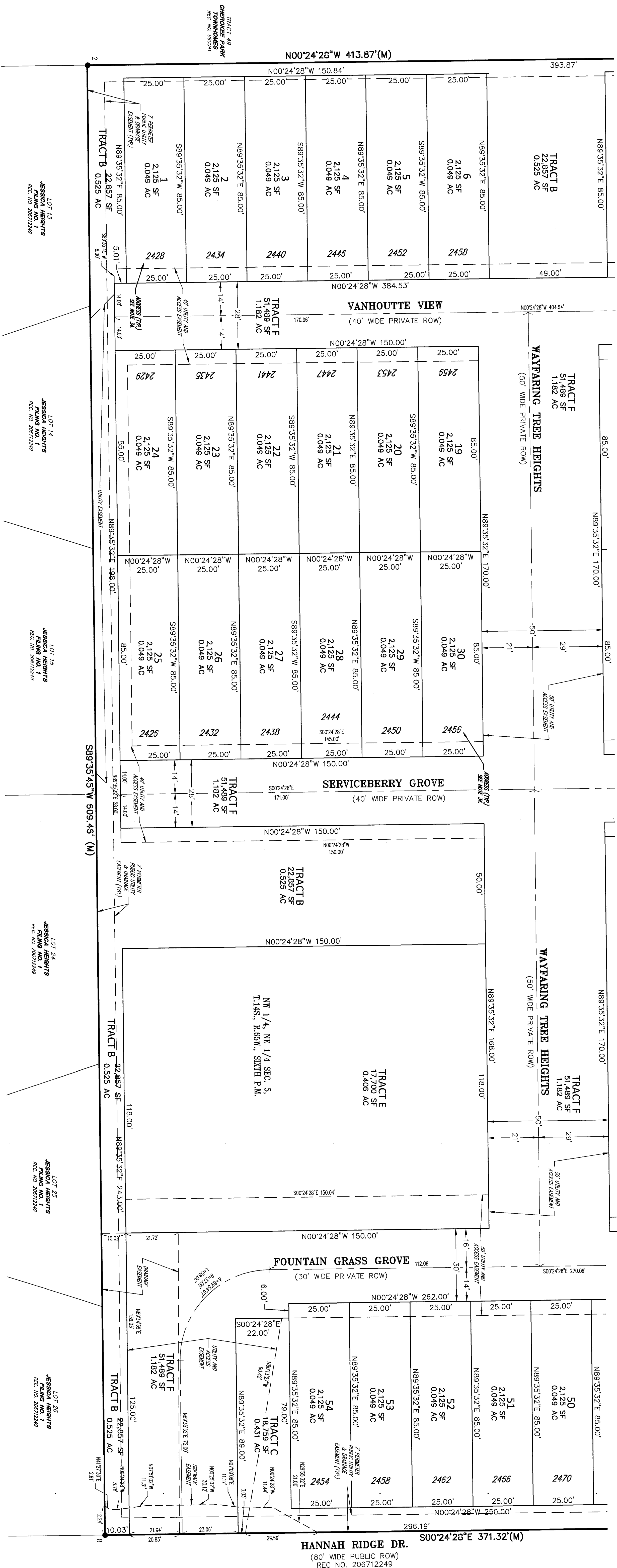
14832



VICINITY MAP  
SCALE: 1"=1000'

SEE SHEET 4

SEE SHEET 6



LOT 13  
JESSICA HEIGHTS  
FILMING NO. 1  
REC. NO. 20671249

LOT 14  
JESSICA HEIGHTS  
FILMING NO. 1  
REC. NO. 20671249

LOT 15  
JESSICA HEIGHTS  
FILMING NO. 1  
REC. NO. 20671249

LOT 24  
JESSICA HEIGHTS  
FILMING NO. 1  
REC. NO. 20671249

LOT 25  
JESSICA HEIGHTS  
FILMING NO. 1  
REC. NO. 20671249

LOT 26  
JESSICA HEIGHTS  
FILMING NO. 1  
REC. NO. 20671249



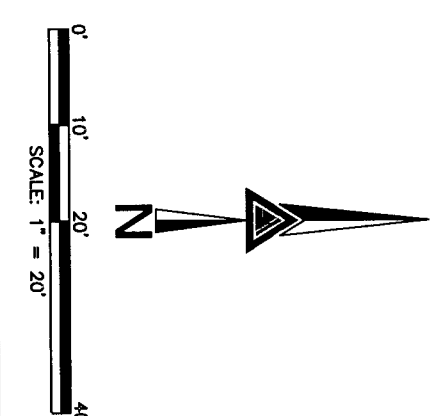
FOR AND ON BEHALF OF  
AZTEC CONSULTANTS, INC.

**AZTEC CONSULTANTS, INC.**  
300 East Mitchell Ave., Suite 1  
Littleton, Colorado 80122  
Phone: (303) 713-1899  
Fax: (303) 713-1897  
www.aztecconsultants.com

DEVELOPER  
**RICHMOND AMERICAN HOMES OF COLORADO, INC., A DELAWARE CORP.**  
4350 S. MONACO ST.  
DENVER, CO 80237

DATE OF PREPARATION: 03-19-2020  
SCALE: 1" = 20'  
SHEET 5 OF 8

FILE NUMBER SF 20 028





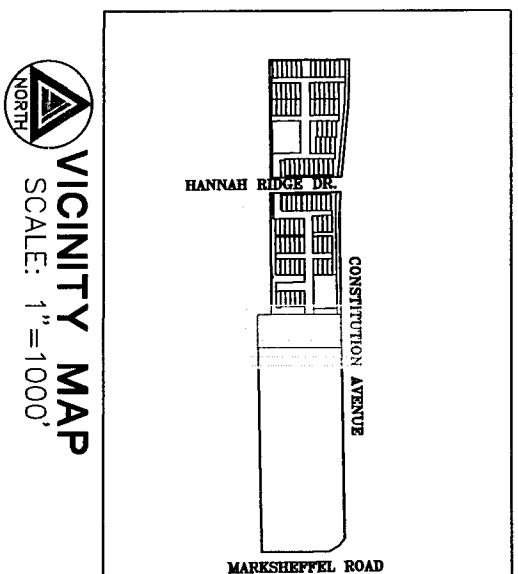






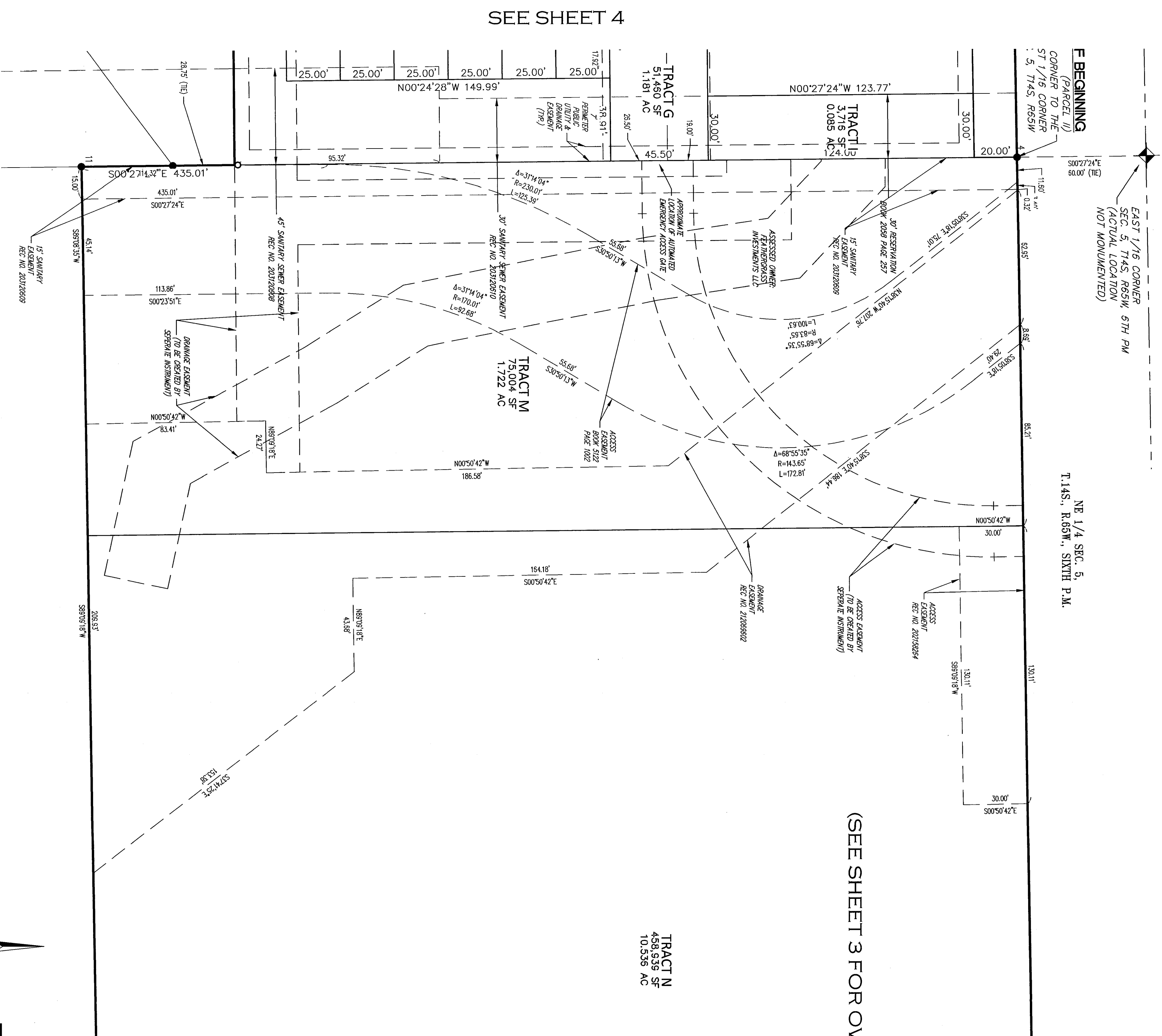
# URBAN COLLECTION AT PALMER VILLAGE

SITUATED IN THE NORTHEAST QUARTER OF SECTION 5,  
TOWNSHIP 14 SOUTH, RANGE 65 WEST OF THE SIXTH PRINCIPAL MERIDIAN,  
COUNTY OF EL PASO, STATE OF COLORADO. **14832**



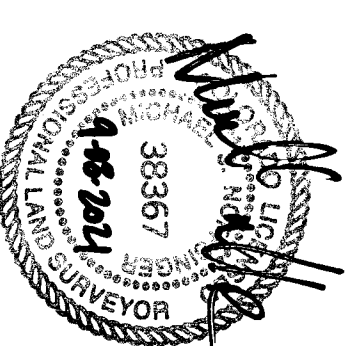
EAST 1/16 CORNER  
SEC. 5, T14S, R65W, 6TH PM  
(ACTUAL LOCATION  
NOT MONUMENTED)

NE 1/4 SEC. 5,  
T.14S., R.65W., SIXTH P.M.



(SEE SHEET 3 FOR OVERALL OF TRACTS M & N)

SEE SHEET 4



FOR AND ON BEHALF OF  
AZTEC CONSULTANTS, INC.

<p><b>AZTEC</b> CONSULTANTS, INC.</p> <p>300 East Mineral Ave, Suite 1 Littleton, Colorado 80120 Phone (303) 714-1877 www.aztecconsultants.com</p> <p>Project No. 2419-46 Drawn By: CWB</p>	<p><b>DEVELOPER</b> RICHMOND AMERICAN HOMES OF COLORADO, INC., A DELAWARE CORP.</p> <p>4350 S. MONACO ST. DENVER, CO 80237</p>	<p>DATE OF PREPARATION: 03-9-2020</p> <p>SCALE: 1" = 20'</p> <p>SHEET 8 OF 8</p>
	<p>FOR AND ON BEHALF OF AZTEC CONSULTANTS, INC.</p>	