

EXHIBIT A
LEGAL DESCRIPTION

A PARCEL OF LAND LOCATED IN THE NORTHEAST QUARTER OF THE NORTHEAST QUARTER OF SECTION 5, TOWNSHIP 14 SOUTH, RANGE 65 WEST, OF THE SIXTH PRINCIPAL MERIDIAN, COUNTY OF EL PASO, STATE OF COLORADO, MORE PARTICULARLY DESCRIBED AS FOLLOWS:

COMMENCING AT THE EAST SIXTEENTH CORNER OF SAID SECTION 5, WHENCE THE NORTH LINE OF THE NORTHWEST QUARTER OF THE NORTHEAST QUARTER OF SECTION 5 BEARS SOUTH 89°09'25" WEST, A DISTANCE 1321.85 FEET, ALL BEARINGS HEREON ARE REFERENCED THERETO;

THENCE ALONG THE WEST LINE OF THE NORTHEAST QUARTER OF THE NORTHEAST QUARTER OF SAID SECTION 5, SOUTH 00°27'24" EAST, A DISTANCE OF 165.60 FEET TO THE **POINT OF BEGINNING**;

THENCE DEPARTING SAID WEST LINE, NORTH 89°32'36" EAST, A DISTANCE OF 37.50 FEET;

THENCE SOUTH 00°27'24" EAST, A DISTANCE OF 229.42 FEET;

THENCE NORTH 89°35'45" EAST, A DISTANCE OF 106.33 FEET;

THENCE SOUTH 00°50'42" EAST, A DISTANCE OF 15.50 FEET;

THENCE SOUTH 89°09'18" WEST, A DISTANCE OF 24.27 FEET;

THENCE SOUTH 00°50'42" EAST, A DISTANCE OF 13.31 FEET;

THENCE SOUTH 89°35'45" WEST, A DISTANCE OF 119.76 FEET TO SAID WEST LINE;

THENCE ALONG SAID WEST LINE, NORTH 00°27'24" WEST, A DISTANCE OF 29.00 FEET;

THENCE DEPARTING SAID WEST LINE, NORTH 89°35'45" EAST, A DISTANCE OF 7.50 FEET;

THENCE NORTH 00°27'24" WEST, A DISTANCE OF 199.39 FEET;

THENCE SOUTH 89°32'36" WEST, A DISTANCE OF 7.50 FEET TO SAID WEST LINE;

THENCE ALONG SAID WEST LINE, NORTH 00°27'24" WEST, A DISTANCE OF 30.00 FEET TO THE **POINT OF BEGINNING**.

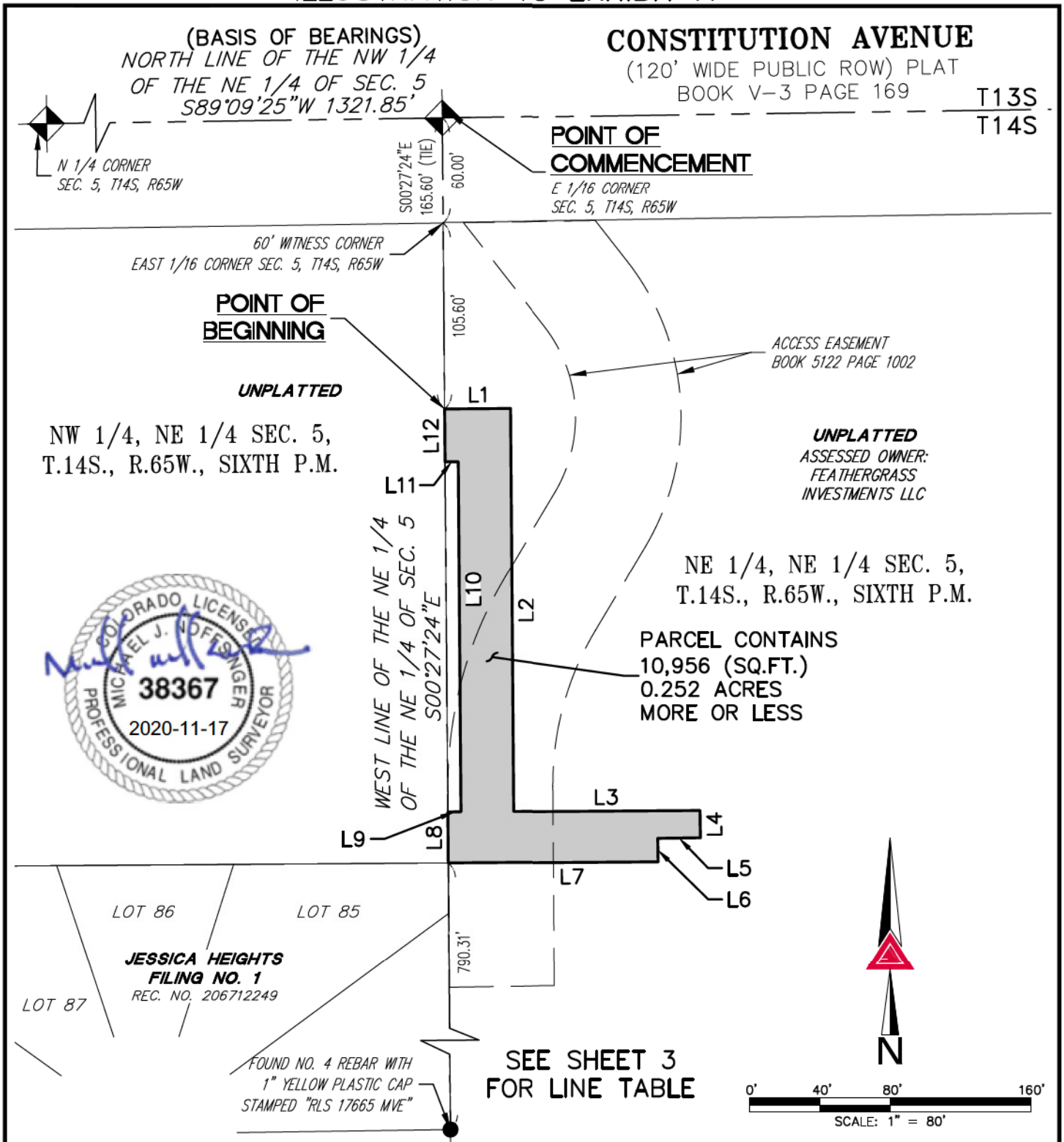
CONTAINING AN AREA OF 0.252 ACRES, (10,956 SQUARE FEET), MORE OR LESS.

EXHIBIT ATTACHED AND MADE A PART HEREOF.

MICHAEL J. NOFFSINGER, PLS 38367
FOR AND ON BEHALF OF AZTEC CONSULTANTS, INC.
300 EAST MINERAL AVE., SUITE 1, LITTLETON, CO 80122
303-713-1898



ILLUSTRATION TO EXHIBIT A



PATH:
 DWG NAME: DRAINAGE EASEMENT WEST.DWG
 DWG: MDW CHK: JRW
 DATE: 11/16/2020
 SCALE: 1" = 80'

AZTEC
 CONSULTANTS, INC.

300 East Mineral Ave,
 Suite 1
 Littleton, Colorado 80122
 Phone: (303)713-1898
 Fax: (303)713-1897
 www.aztecconsultants.com

Q:\21419-48 - Constitution & Hannah (aka Feathergrass) - Topo & Plat\DWG\EXHIBITS

DRAINAGE EASEMENT
 NE 1/4, NE 1/4 SEC. 5, T.14S., R.65W., 6TH P.M.
 EL PASO COUNTY, COLORADO

JOB NUMBER 21419-48

2 OF 3 SHEETS

ILLUSTRATION TO EXHIBIT A

| LINE TABLE | | |
|------------|-------------|---------|
| LINE | BEARING | LENGTH |
| L1 | N89°32'36"E | 37.50' |
| L2 | S00°27'24"E | 229.42' |
| L3 | N89°35'45"E | 106.33' |
| L4 | S00°50'42"E | 15.50' |
| L5 | S89°09'18"W | 24.27' |
| L6 | S00°50'42"E | 13.31' |
| L7 | S89°35'45"W | 119.76' |
| L8 | N00°27'24"W | 29.00' |
| L9 | N89°35'45"E | 7.50' |
| L10 | N00°27'24"W | 199.39' |
| L11 | S89°32'36"W | 7.50' |
| L12 | N00°27'24"W | 30.00' |



NOTE: THIS DRAWING DOES NOT REPRESENT A MONUMENTED LAND SURVEY AND IS ONLY INTENDED TO DEPICT THE ATTACHED LEGAL DESCRIPTION.

PATH: _____
 DWG NAME: DRAINAGE EASEMENT WEST.DWG
 DWG: MDW CHK: JRW
 DATE: 11/16/2020
 SCALE: 1" = 80'



Q:\21419-48 - Constitution & Hannah (aka Feathergrass) - Topo & Plat\Drawg\EXHIBITS

300 East Mineral Ave,
 Suite 1
 Littleton, Colorado 80122
 Phone: (303)713-1898
 Fax: (303)713-1897
www.aztecconsultants.com

DRAINAGE EASEMENT
NE 1/4, NE 1/4 SEC. 5, T.14S., R.65W., 6TH P.M.
EL PASO COUNTY, COLORADO

JOB NUMBER 21419-48

3 OF 3 SHEETS