

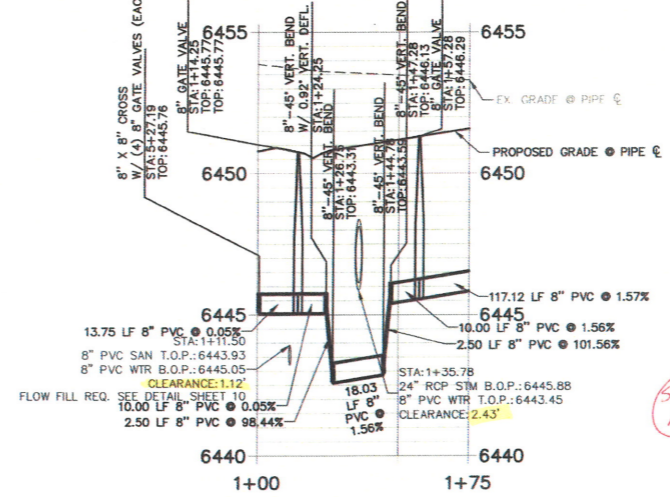
NOTE 1
NO DEAD END LINES
LOOP INTO EXIST OR
PROPOSE LINES
JKM/CMD
12-11-2020

CHECK LABELING
LOOKS WRONG
JKM/CMD

EXPLAIN SECONDARY
CONTAINMENT IN THIS
AREA JKM/CMD

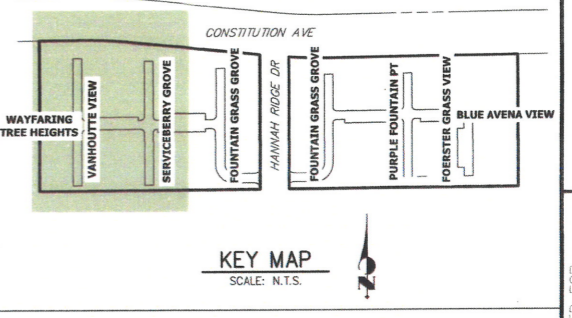
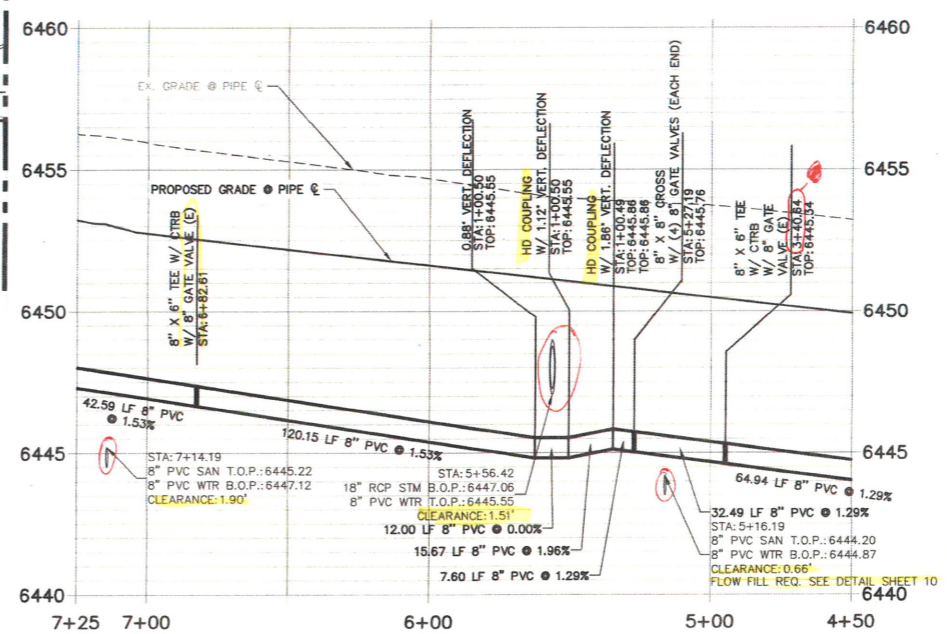
SEE NOTE 1 ABOVE
JKM/CMD
12-11-2020

**WP03 CROSSING 1 & 2 PROFILE
STA 1+00.00 TO 1+75.00**



SEE CMD
NOTE 3

**WP01 CROSSINGS 2-4 PROFILE
STA 4+50.00 TO 7+25.00**



NOTES:

1. ALL CTRB'S SHALL BE CONSTRUCTED PER CSU DETAILS A4-2 & A4-3.
2. ALL BENDS SHALL BE RESTRAINED W/ MECHANICAL JOINT RESTRAINTS (MJR) PER DETAILS A4-4 THROUGH A4-6. REQUIRED RESTRAINT LENGTHS SHALL MEET MINIMUM LENGTHS PUBLISHED IN DETAIL A4-4 FOR MAXIMUM STATIC PRESSURES BETWEEN 150 AND 200 PSI.
3. A MINIMUM DISTANCE OF 9 FEET IS REQUIRED BETWEEN THE CENTERLINE OF THE CROSSING AND THE FIRST PIPE JOINT. THIS MEETS THE REQUIREMENT FOR SECONDARY CONTAINMENT AS DESCRIBED IN SECTION 2.6-H.2. REFER TO JR UTILITY SERVICE PLAN FOR ADDITIONAL DETAILS.
4. ALL PROPOSED WATER LINES AND STRUCTURES ARE PUBLIC, UNLESS OTHERWISE SPECIFIED.
5. "MECHANICAL JOINT RESTRAINTS" IS ABBREVIATED AS "MJR".
6. SEE JR SANITARY SEWER PLANS FOR SANITARY SEWER DESIGN AND DETAILS.
7. SEE JR STREET, STORM, POND AND GESC PLANS FOR ASSOCIATED IMPROVEMENTS AND STORMWATER SYSTEM DESIGN.
8. THE PROPOSED WATER LINES SHALL BE INSTALLED AT CMD STANDARD DEPTH UNLESS OTHERWISE SHOWN.
9. ALL PROPOSED JOINT DEFLECTIONS REQUIRE HIGH DEFLECTION COUPLING PER CMD STANDARDS AND DETAIL A7-9.
10. SEE JR USP PLANS FOR WATER AND SANITARY SERVICE LOCATIONS & DESIGN INFO.
11. ALL LOWERINGS SHALL BE CONSTRUCTED PER DETAIL A7-1 INCLUDING REQ. CRA'S.
12. ALL FIRE HYDRANTS SHALL BE CONSTRUCTED PER DETAIL A5-3.
13. SEE PROFILE VIEWS FOR VERTICAL DESIGN INFORMATION, INCLUDING UTILITY CROSSINGS AND CLEARANCES, PIPE SLOPES, AND BURY DEPTHS.

CMD GENERAL NOTES/COMMENTS

1. NOTE 2 SHOW WATER BORD OF SAN SEWER LIGHT FOR CLARITY (ALL SHEETS)
2. NO HIGH DEFLECTION COUPLINGS ALLOWED (SEE JR NOTE 9)
3. 8" LINE SIZE SEEMS OVERSIZED VERIFY LINE MEETS DESIGN FLOW.
4. INCLUDE SAMPLE STATION IN DEVELOPED AREA.



Know what's below.
Call before you dig.

THE LOCATIONS OF EXISTING ABOVE GROUND AND UNDERGROUND UTILITIES ARE SHOWN IN AN APPROXIMATE WAY ONLY. THE CONTRACTOR SHALL DETERMINE THE EXACT LOCATION OF ALL EXISTING UTILITIES BEFORE COMMENCING WORK. THE CONTRACTOR SHALL BE FULLY RESPONSIBLE FOR ANY AND ALL DAMAGES WHICH MIGHT BE CAUSED BY HIS FAILURE TO EXACTLY LOCATE AND PRESERVE ANY AND ALL ABOVE GROUND AND UNDERGROUND UTILITIES.

ENGINEER'S STATEMENT

PREPARED UNDER MY DIRECT SUPERVISION AND ON BEHALF OF JR ENGINEERING
GLENN D. ELLIS, P.E.
COLORADO P.E. 38861
FOR AND ON BEHALF OF JR ENGINEERING, LLC

UNTIL SUCH TIME AS THESE DRAWINGS ARE APPROVED BY THE APPROPRIATE AGENCY, THESE DRAWINGS DO NOT CONSTITUTE AN OFFICIAL ENGINEERING DESIGN AND SHALL BE USED ONLY FOR THE PURPOSES AUTHORIZED BY WRITTEN AUTHORIZATION.

PREPARED FOR
MDC HOLDINGS
RICHMOND AMERICAN HOMES
4350 S. MONACO STREET
DENVER, CO 80237
ATTN: JASON POCK
720-977-3827

J-R ENGINEERING
A Weisman Company
Central 305-740-9888 • Colorado Springs 719-595-2888
Fort Collins 970-491-9888 • www.jrengineering.com

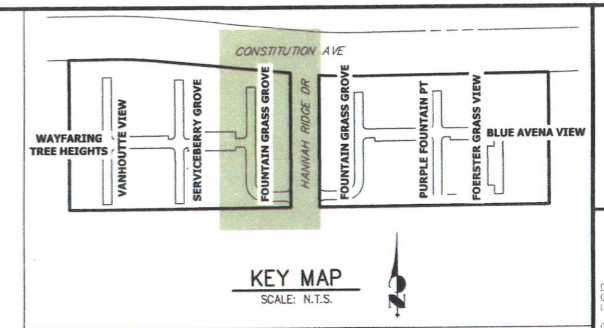
No.	REVISION	DATE	BY

H-Scale: 1" = 30'
V-Scale: 1" = 3'

DATE: 10-30-20
DESIGNED BY: APL
DRAWN BY: APL
CHECKED BY: APL

URBAN COLLECTION AT PALMER VILLAGE
WATER DISTRIBUTION PLAN
WATER SYSTEM PLAN

SHEET 4 OF 10
JOB NO. 25149.01

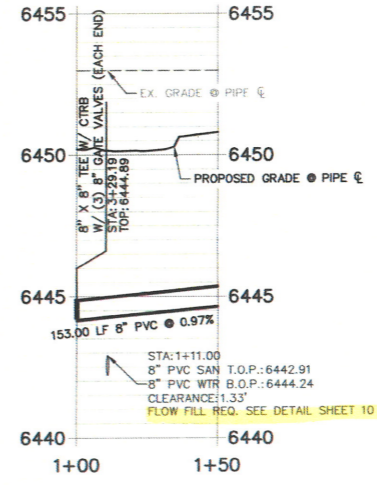


UNLESS SHOWN OTHERWISE, THESE DRAWINGS ARE APPROVED BY THE ENGINEERING AGENCIES. JR ENGINEERING APPROVES THEIR USE ONLY FOR THE PURPOSES DESIGNATED BY WRITTEN AUTHORIZATION.

PREPARED FOR
MDC HOLDINGS
 RICHMOND AMERICAN HOMES
 4350 S. MONACO STREET
 DENVER, CO 80237
 ATTN: JASON POCK
 720-977-3827

**WP02 CROSSING 1 PROFILE
 STA 1+00.00 TO 1+50.00**

SEE NOTE 1
 SHEET 4
 JRM/CMD



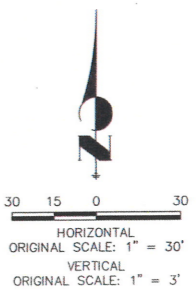
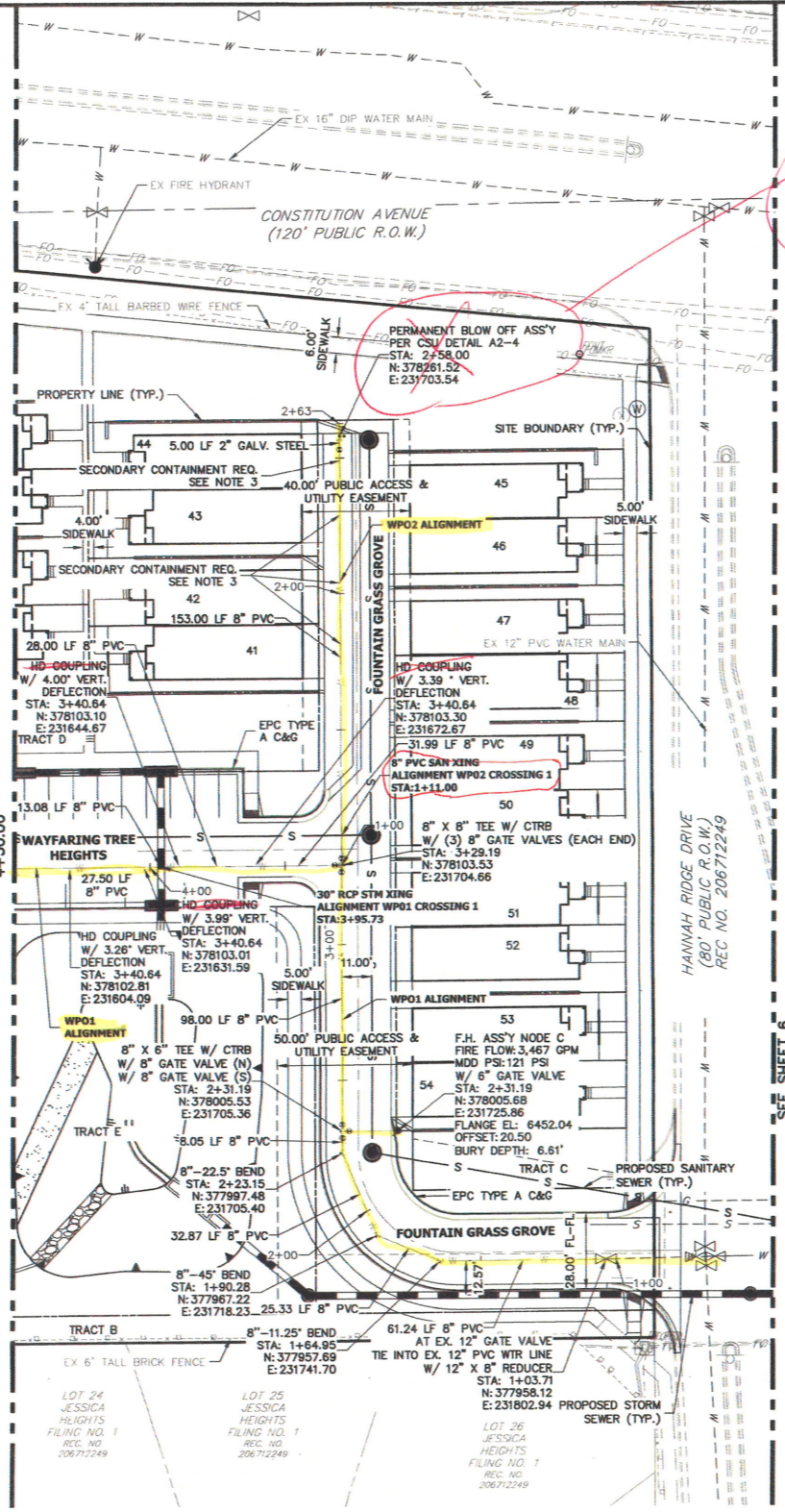
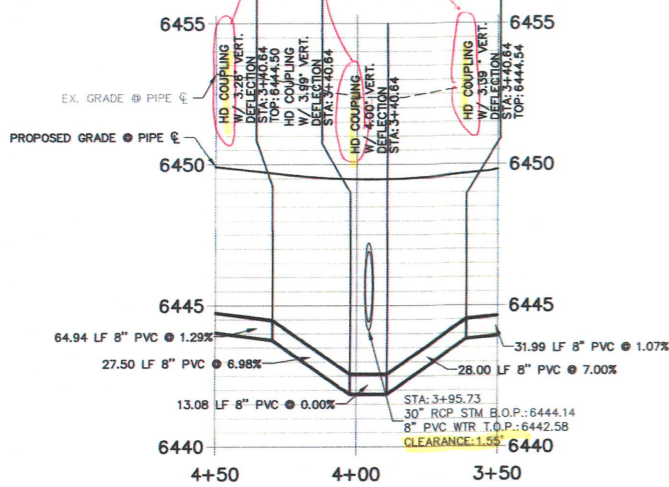
NOTES:

- ALL CTRB'S SHALL BE CONSTRUCTED PER CSU DETAILS A4-2 & A4-3.
- ALL BENDS SHALL BE RESTRAINED W/ MECHANICAL JOINT RESTRAINTS (MJR) PER DETAILS A4-4 THROUGH A4-6. REQUIRED RESTRAINT LENGTHS SHALL MEET MINIMUM LENGTHS PUBLISHED IN DETAIL A4-4 FOR MAXIMUM STATIC PRESSURES BETWEEN 150 AND 200 PSI.
- A MINIMUM DISTANCE OF 9 FEET IS REQUIRED BETWEEN THE CENTERLINE OF THE CROSSING AND THE FIRST PIPE JOINT. THIS MEETS THE REQUIREMENT FOR SECONDARY CONTAINMENT AS DESCRIBED IN SECTION 2.6-H-2. REFER TO JR UTILITY SERVICE PLAN FOR ADDITIONAL DETAILS.
- ALL PROPOSED WATER LINES AND STRUCTURES ARE PUBLIC, UNLESS OTHERWISE SPECIFIED.
- "MECHANICAL JOINT RESTRAINTS" IS ABBREVIATED AS "MJR"
- SEE JR SANITARY SEWER PLANS FOR SANITARY SEWER DESIGN AND DETAILS.
- SEE JR STREET, STORM, POND AND GESC PLANS FOR ASSOCIATED IMPROVEMENTS AND STORMWATER SYSTEM DESIGN.
- THE PROPOSED WATER LINES SHALL BE INSTALLED AT CMD STANDARD DEPTH UNLESS OTHERWISE SHOWN.
- ALL PROPOSED JOINT DEFLECTIONS REQUIRE HIGH DEFLECTION COUPLING PER CMD STANDARDS AND DETAIL A7-9.
- SEE JR USP PLANS FOR WATER AND SANITARY SERVICE LOCATIONS & DESIGN INFO.
- ALL LOWERINGS SHALL BE CONSTRUCTED PER DETAIL A7-1 INCLUDING REO. CRAS.
- ALL FIRE HYDRANTS SHALL BE CONSTRUCTED PER DETAIL A5-3.
- SEE PROFILE VIEWS FOR VERTICAL DESIGN INFORMATION, INCLUDING UTILITY CROSSINGS AND CLEARANCES, PIPE SLOPES, AND BURY DEPTHS.

SEE NOTE 3
 SHEET 4
 JRM/CMD

**WP01 CROSSING 1 PROFILE
 STA 3+50.00 TO 4+50.00**

SEE NOTE 2
 SHEET 4



ENGINEER'S STATEMENT

PREPARED UNDER MY DIRECT SUPERVISION AND ON BEHALF OF JR ENGINEERING

GLENN D. ELLIS, P.E.
 COLORADO P.E. 38861
 FOR AND ON BEHALF OF JR ENGINEERING, LLC

DATE



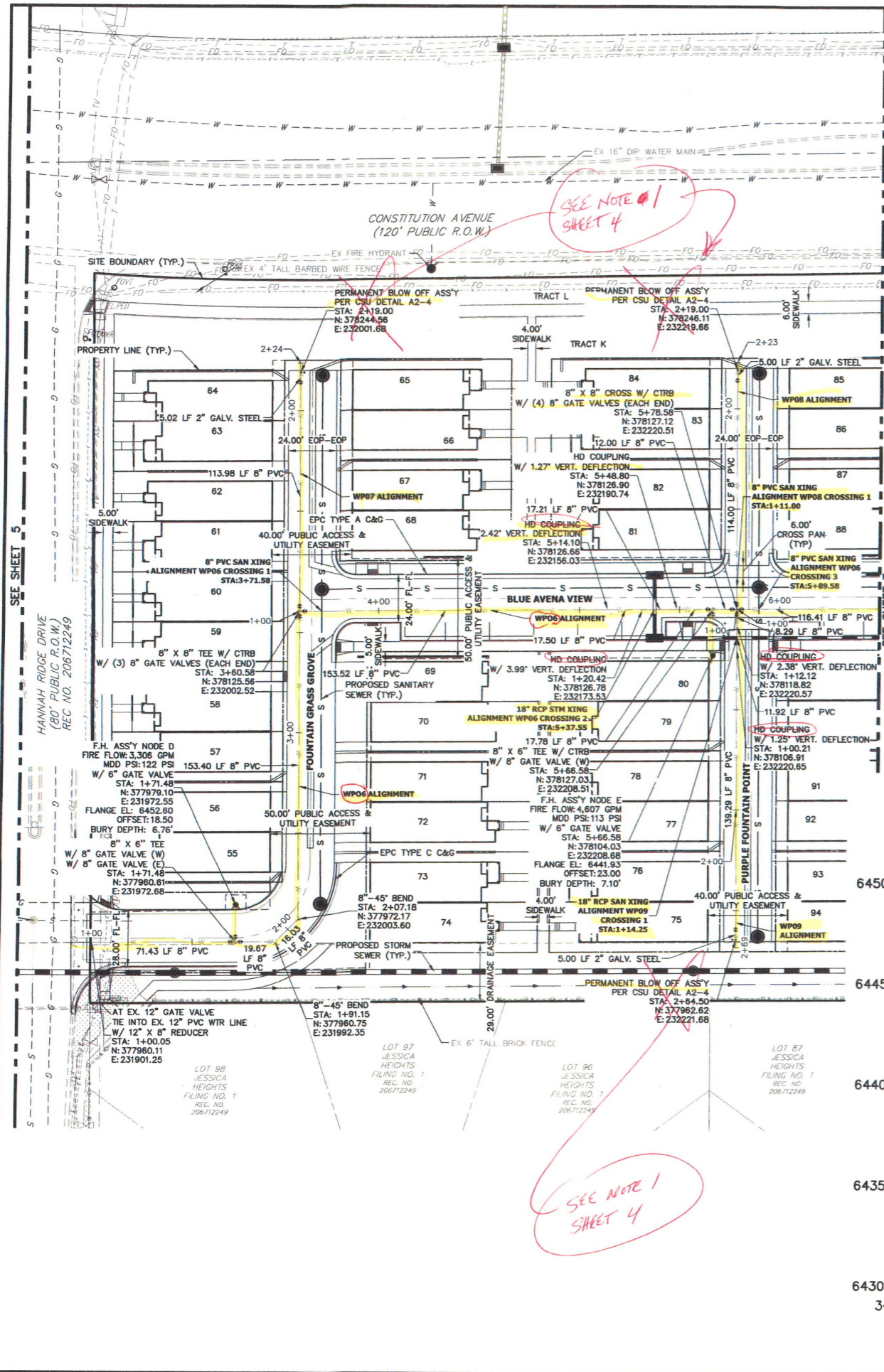
THE LOCATIONS OF EXISTING ABOVE GROUND AND UNDERGROUND UTILITIES ARE SHOWN IN AN APPROXIMATE WAY ONLY. THE CONTRACTOR SHALL DETERMINE THE EXACT LOCATION OF ALL EXISTING UTILITIES BEFORE COMMENCING WORK. THE CONTRACTOR SHALL BE FULLY RESPONSIBLE FOR ANY AND ALL DAMAGES WHICH MIGHT BE CAUSED BY HIS FAILURE TO EXACTLY LOCATE AND PRESERVE ANY AND ALL ABOVE GROUND AND UNDERGROUND UTILITIES.

No.	REVISION	BY	DATE	H-SCALE		V-SCALE		DESIGNED BY	DRAWN BY	CHECKED BY
				1"=30'	1"=3'	10'-30'-20'	1"=3'			
								APL	APL	

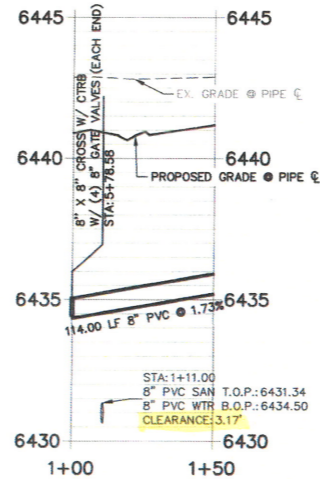
URBAN COLLECTION AT PALMER VILLAGE
 WATER DISTRIBUTION PLAN
 WATER SYSTEM PLAN

SHEET 5 OF 10
 JOB NO. 25149.01

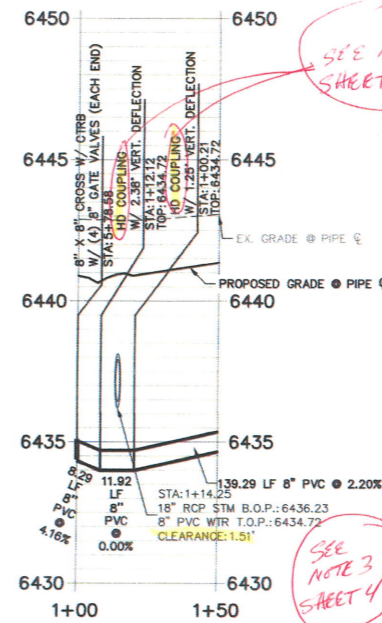




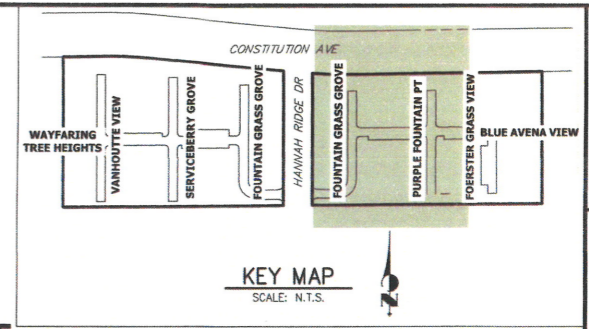
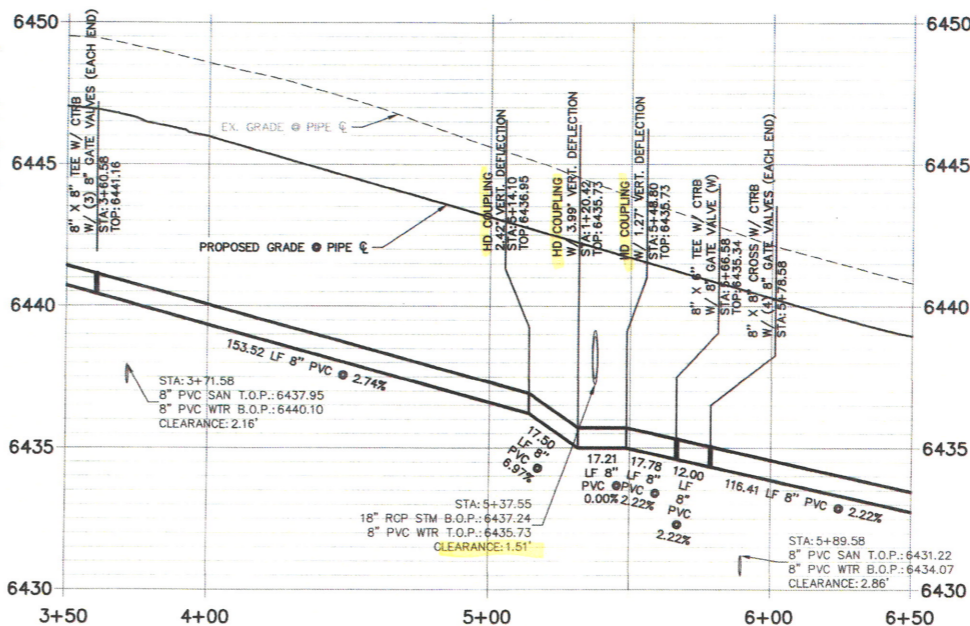
**WP08 CROSSING 1 PROFILE
STA 1+00.00 TO 1+50.00**



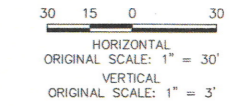
**WP09 CROSSING 1 PROFILE
STA 1+00.00 TO 1+50.00**



**WP06 CROSSINGS 1-3 PROFILE
STA 3+50.00 TO 6+50.00**



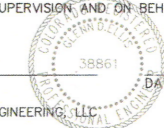
- NOTES:**
1. ALL CTRB'S SHALL BE CONSTRUCTED PER CSU DETAILS A4-2 & A4-3.
 2. ALL BENDS SHALL BE RESTRAINED W/ MECHANICAL JOINT RESTRAINTS (MJR) PER DETAILS A4-4 THROUGH A4-6. REQUIRED RESTRAINT LENGTHS SHALL MEET MINIMUM LENGTHS PUBLISHED IN DETAIL A4-4 FOR MAXIMUM STATIC PRESSURES BETWEEN 150 AND 200 PSI.
 3. A MINIMUM DISTANCE OF 9 FEET IS REQUIRED BETWEEN THE CENTERLINE OF THE CROSSING AND THE FIRST PIPE JOINT. THIS MEETS THE REQUIREMENT FOR SECONDARY CONTAINMENT AS DESCRIBED IN SECTION 2.6-H-2. REFER TO JR UTILITY SERVICE PLAN FOR ADDITIONAL DETAILS.
 4. ALL PROPOSED WATER LINES AND STRUCTURES ARE PUBLIC, UNLESS OTHERWISE SPECIFIED.
 5. "MECHANICAL JOINT RESTRAINTS" IS ABBREVIATED AS "MJR".
 6. SEE JR SANITARY SEWER PLANS FOR SANITARY SEWER DESIGN AND DETAILS.
 7. SEE JR STREET, STORM, POND AND GESC PLANS FOR ASSOCIATED IMPROVEMENTS AND STORMWATER SYSTEM DESIGN.
 8. THE PROPOSED WATER LINES SHALL BE INSTALLED AT CMD STANDARD DEPTH UNLESS OTHERWISE SHOWN.
 9. ALL PROPOSED JOINT DEFLECTIONS REQUIRE HIGH DEFLECTION COUPLING PER CMD STANDARDS AND DETAIL A7-9.
 10. SEE JR USP PLANS FOR WATER AND SANITARY SERVICE LOCATIONS & DESIGN INFO.
 11. ALL LOWERINGS SHALL BE CONSTRUCTED PER DETAIL A7-1 INCLUDING REQ. C.R.A.S.
 12. ALL FIRE HYDRANTS SHALL BE CONSTRUCTED PER DETAIL A5-3.
 13. SEE PROFILE VIEWS FOR VERTICAL DESIGN INFORMATION, INCLUDING UTILITY CROSSINGS AND CLEARANCES, PIPE SLOPES, AND BURY DEPTHS.



THE LOCATIONS OF EXISTING ABOVE GROUND AND UNDERGROUND UTILITIES ARE SHOWN IN AN APPROXIMATE WAY ONLY. THE CONTRACTOR SHALL DETERMINE THE EXACT LOCATION OF ALL EXISTING UTILITIES BEFORE COMMENCING WORK. THE CONTRACTOR SHALL BE FULLY RESPONSIBLE FOR ANY AND ALL DAMAGES WHICH MIGHT BE CAUSED BY HIS FAILURE TO EXACTLY LOCATE AND PRESERVE ANY AND ALL ABOVE GROUND AND UNDERGROUND UTILITIES.

ENGINEER'S STATEMENT

PREPARED UNDER MY DIRECT SUPERVISION, AND ON BEHALF OF JR ENGINEERING
 GLENN D. ELLIS, P.E.
 COLORADO P.E. 38861
 FOR AND ON BEHALF OF JR ENGINEERING, LLC



UNTL SUCH TIME AS THESE DRAWINGS ARE APPROVED BY THE APPROPRIATE ENGINEERING AGENCIES, JR ENGINEERING APPROVES THEIR USE FOR THE PURPOSES DESIGNATED BY WRITTEN AUTHORIZATION.

PREPARED FOR
MDC HOLDINGS
 RICHMOND AMERICAN HOMES
 4350 S. MONACO STREET
 DENVER, CO 80237
 ATTN: JASON POCK
 720-977-3627

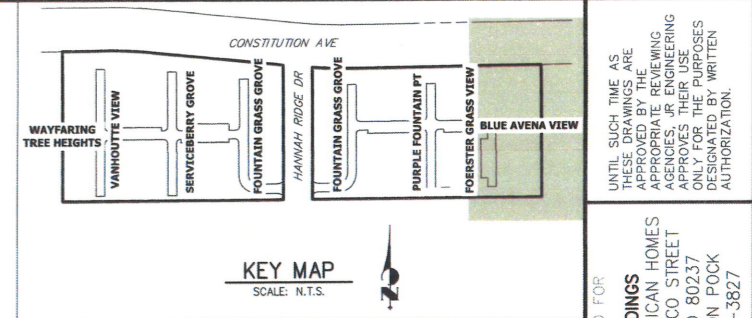
JR ENGINEERING
 A Nielsen Company
 Centennial 303-740-8888 • Colorado Springs 719-589-2883
 Fort Collins 970-491-8888 • www.jr-engineering.com

NO.	REVISION	DATE	BY

H-SCALE	V-SCALE	DATE	DESIGNED BY	DRAWN BY	CHECKED BY
1"=30'	1"=3'	10-30-20	APL	APL	

URBAN COLLECTION AT PALMER VILLAGE
WATER DISTRIBUTION PLAN
WATER SYSTEM PLAN

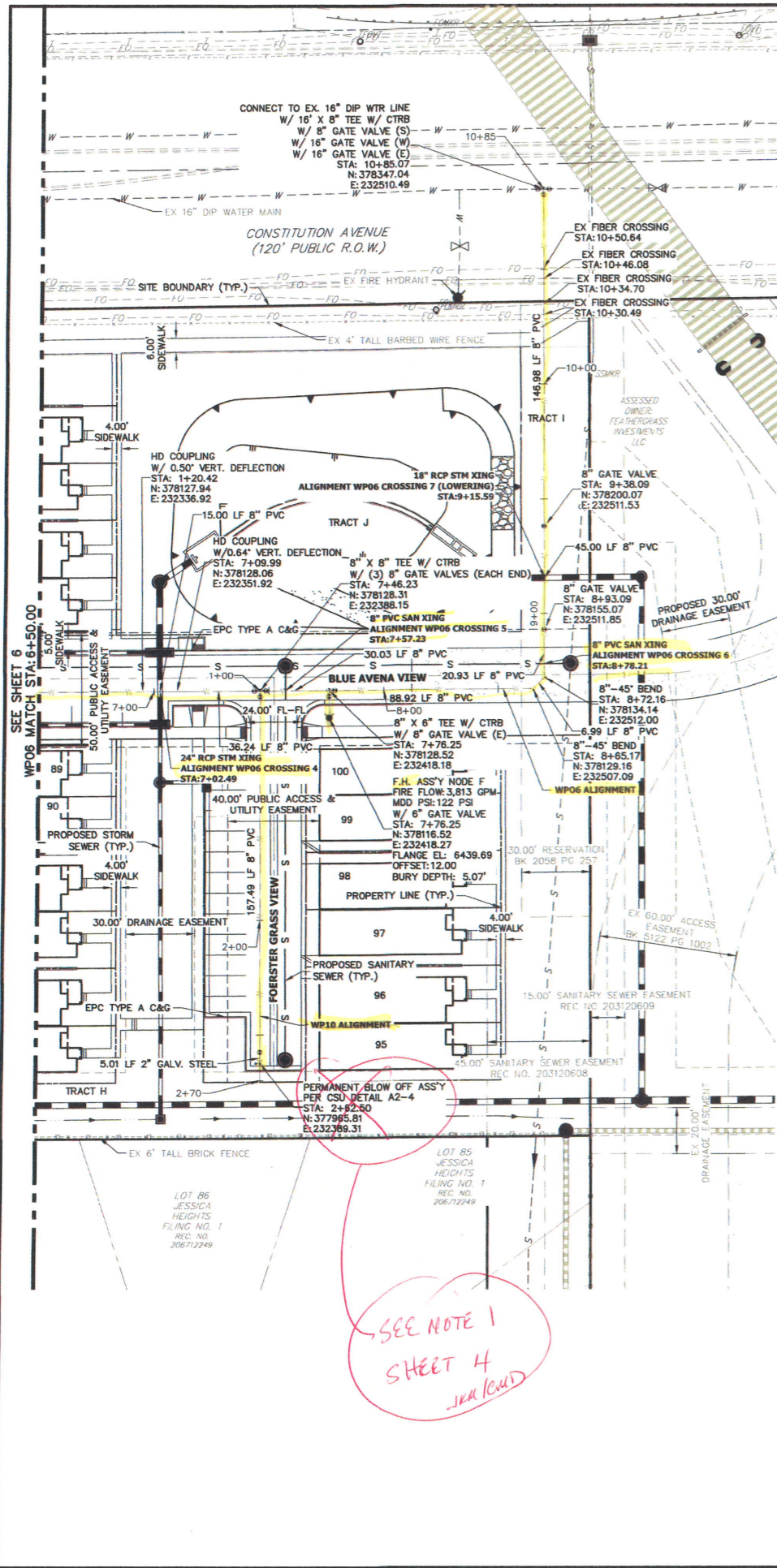
SHEET 6 OF 10
 JOB NO. 25149.01



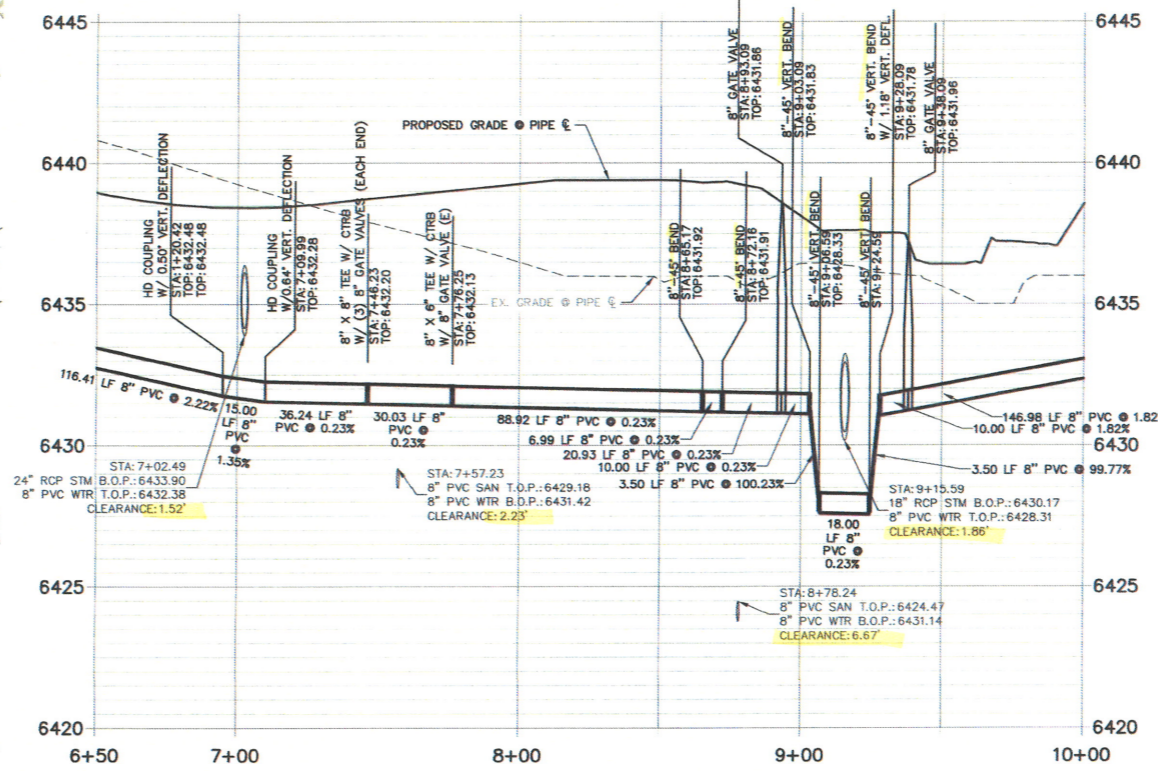
UNTIL SUCH TIME AS THESE DRAWINGS ARE APPROVED BY THE APPROPRIATE REVIEWING AGENCIES, JR ENGINEERING APPROVES THEIR USE DESIGNATED BY WRITTEN AUTHORIZATION.

PREPARED FOR
MDC HOLDINGS
 RICHMOND AMERICAN HOMES
 4350 S. MONACO STREET
 DENVER, CO 80237
 ATTN: JASON POOK
 720-977-3827

J.R. ENGINEERING
 A Weisman Company
 Centennial 303-740-9888 • Colorado Springs 719-592-2888
 Fort Collins 970-491-8888 • www.jrengineering.com

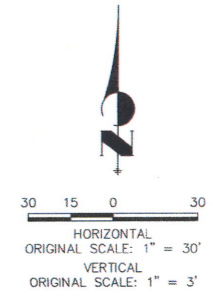


**WP06 CROSSINGS 4-7 PROFILE
 STA 6+50.00 TO 10+00.00**



- NOTES:**
1. ALL CTRB'S SHALL BE CONSTRUCTED PER CSU DETAILS A4-2 & A4-3.
 2. ALL BENDS SHALL BE RESTRAINED W/ MECHANICAL JOINT RESTRAINTS (MJR) PER DETAILS A4-4 THROUGH A4-6. REQUIRED RESTRAINT LENGTHS SHALL MEET MINIMUM LENGTHS PUBLISHED IN DETAIL A4-4 FOR MAXIMUM STATIC PRESSURES BETWEEN 150 AND 200 PSI.
 3. A MINIMUM DISTANCE OF 9 FEET IS REQUIRED BETWEEN THE CENTERLINE OF THE CROSSING AND THE FIRST PIPE JOINT. THIS MEETS THE REQUIREMENT FOR SECONDARY CONTAINMENT AS DESCRIBED IN SECTION 2.6-H.2. REFER TO JR UTILITY SERVICE PLAN FOR ADDITIONAL DETAILS.
 4. ALL PROPOSED WATER LINES AND STRUCTURES ARE PUBLIC, UNLESS OTHERWISE SPECIFIED.
 5. "MECHANICAL JOINT RESTRAINTS" IS ABBREVIATED AS "MJR".
 6. SEE JR SANITARY SEWER PLANS FOR SANITARY SEWER DESIGN AND DETAILS.
 7. SEE JR STREET, STORM, POND AND GESC PLANS FOR ASSOCIATED IMPROVEMENTS AND STORMWATER SYSTEM DESIGN.
 8. THE PROPOSED WATER LINES SHALL BE INSTALLED AT CMD STANDARD DEPTH UNLESS OTHERWISE SHOWN.
 9. ALL PROPOSED JOINT DEFLECTIONS REQUIRE HIGH DEFLECTION COUPLING PER CMD STANDARDS AND DETAIL A7-9.
 10. SEE JR USP PLANS FOR WATER AND SANITARY SERVICE LOCATIONS & DESIGN INFO.
 11. ALL LOWERINGS SHALL BE CONSTRUCTED PER DETAIL A7-1 INCLUDING REQ. CRA'S.
 12. ALL FIRE HYDRANTS SHALL BE CONSTRUCTED PER DETAIL A5-3.
 13. SEE PROFILE VIEWS FOR VERTICAL DESIGN INFORMATION, INCLUDING UTILITY CROSSINGS AND CLEARANCES, PIPE SLOPES, AND BURY DEPTHS.

811
 Know what's below.
 Call before you dig.



ENGINEER'S STATEMENT
 PREPARED UNDER MY DIRECT SUPERVISION AND ON BEHALF OF JR ENGINEERING

GLENN D. ELLIS, P.E.
 COLORADO P.E. 38861
 FOR AND ON BEHALF OF JR ENGINEERING, LLC

DATE

No.	REVISION	DATE	BY

URBAN COLLECTION AT PALMER VILLAGE
 WATER DISTRIBUTION PLAN
 WATER SYSTEM PLAN

SHEET 7 OF 10
 JOB NO. 25149.01