



Preliminary Acceptance Punchlist
El Paso County – Department of Public Works - Stormwater Section

Project Name:	Upland Flats
EDARP Filing Number(s):	CON2159, SF2112
ESQCP Number:	ESQ2139
Attendees:	DPW SW: Joshua Augustenborg, Erica Rylander, Ben Jones DPW Development Services: Brad Walters Developer: Brett Lewis, Nate Leblanc
Date of Walk-Thru:	10/18/2023
Walk-Thru Number:	1

Please have all items completed within six months of the date on this punchlist. If all items are not completed within six months, a new punchlist will be created. When all items are completed, please let your inspector know as soon as possible so they can come out to the project to confirm.

Findings to be addressed prior to scheduling a follow-up walk-thru:

Site Wide:

- Erosion Control Blanket (ECB) is called out in multiple locations throughout site. Hydro mulch was applied instead. Monitor for adequate vegetation and erosion in these areas throughout the Defect Warranty Period. Reference Photo #1.
- At southeast corner, southwest corner, and along south perimeter, bring grade up to be flush with curb and sidewalk to prevent standing water in right-of-way. Reference Photo #s 4 and 5.

Drainage Swales:

- Missing drainage swale south of dog park per approved plans. Reference Grading and Erosion Control Plan (GEC) Sheet C303. Reference Photo #7.
- Check dams along the south perimeter are installed in the wrong location. Plans call for installation of check dams in swale at top of slope. Reference GEC Sheet C303. Reference Photo #6.
- Curb cut on north side of garages, east of Building 6, was not installed per approved plan. Ensure stormwater flows from the north swale and east swale to Extended Detention Basin to meet water quality treatment requirements.
- The swale at southwest corner of site appears to be lower than emergency spillway. Verify elevation.
- Fine-grade swale at southwest corner of site for positive drainage.

Culverts:

- Remove sediment from culvert at south entrance. Reference Photo #8.

Stormwater Inlet Structures:

- Remove curb Inlet protection on Marksheffel Road. Reference Photo #9.
- Finish grouting pipe collar to existing inlet on southwest corner of Akers Drive. Reference photo #19.

Extended Detention Basin (EDB):

- Reestablish maintenance access road at east end of EDB. Reference Photo #11.
- Bring up grade to be flush with forebays and trickle channel throughout. Reference Photos # 3
- Stainless steel trash screen is not per plan detail. Plans call for No. 93 Johnson Vee Wire or equivalent. Reference Construction Drawings (CDs) Sheet C626. Reference Photo #12.
- Remove sediment from micropool at outlet structure. Reference Photo #12.
- Remove irrigation heads and install maintenance access road on west end of EDB per approved plan. Reference CDs Sheet C626. Reference Photos #13 and 14.
- Neoprene gasket installed behind orifice plate at outlet structure is deteriorated and needs to be replaced.
- Orifice plate bolts and nuts are missing from structure. Ensure the orifice plate is flush with outlet structure. Reference Photos #15 and 16.
- Remove sediment from trickle channel throughout EDB. Reference Photo #17.
- Fine-grade EDB bottom for positive drainage between outlet structure and Forebay A. Reference Photo #17.
- Build up surrounding area to meet top of emergency spillway cut off walls. Reference CDs Sheet C626. Reference Photo # 18.
- Outlet structure and pipe holding water. Missing 2.5% slope invert in bottom of outlet structure.

As-Built Drawings

- Show grouted riprap rundown at east side of EDB on as-builts.
- Show elliptical outlet pipe and pipe invert on as-builts.

Maintenance Items for ESQCP Closure:

- North Limits of construction (LOC) check dams *should* be extended in length to prevent bypassing. Monitor throughout defect warranty period. Reference Photo #2

Photos:



Photo 1: Erosion Control Blanket (ECB) is called out in multiple locations throughout site. Hydro mulch was applied instead. Monitor for adequate vegetation and erosion in these areas throughout Defect Warranty Period.



Photo 2: North Limits of construction (LOC) check dams *should* be extended in length to prevent bypassing. Monitor throughout defect warranty period.



Photo 3: Bring up grade to be flush with forebays and trickle channel throughout.



Photo 4: Bring grade up at south end of site to be flush with curb and sidewalk to prevent standing water in right-of-way.



Photo 5: Bring grade up at south end of site to be flush with curb and sidewalk to prevent standing water in right-of-way.



Photo 6: South side Limits of Construction (LOC) check dams are installed at bottom of slope. Plans call for Installation at top of slope. Reference GEC sheet C 303.



Photo 7: Missing drainage swale south of dog park per approved plans. Reference GEC sheet C 303.



Photo 8: Remove sediment from culvert at south entrance.



Photo 9: Inlet protection on Marksheffel Rd can be removed.



Photo 10: Show grouted riprap rundown at east side of EDB on as-builts.



Photo 11: Reestablish maintenance access road on east end of EDB.



Photo 12: Stainless steel trash screen is not per plan detail. Plans call for No.93 Johnson vee wire or equivalent. Reference CDs sheet C 626.



Photo 13: North maintenance access rd. needs to be reestablished. Plans call for installation alongside trickle channel. Reference sheet C 626 of the CDs.



Photo 14: North maintenance access rd. needs to be reestablished. Plans call for installation alongside trickle channel. Reference sheet C 626 of the CDs.



Photo 15: Neoprene gasket installed behind orifice plate at outlet structure is deteriorated and needs to be replaced. Orifice plate bolts and nuts are missing from structure.



Photo 16: Neoprene gasket installed behind orifice plate at outlet structure is deteriorated and needs to be replaced. Orifice plate bolts and nuts are missing from structure.



Photo 17: Remove sediment from trickle channel throughout EDB. Regrade pond bottom between outlet structure and Forebay A.



Photo 18: Build up surrounding area to meet flush top of emergency spillway cut off wall. Reference CDs Sheet C626.

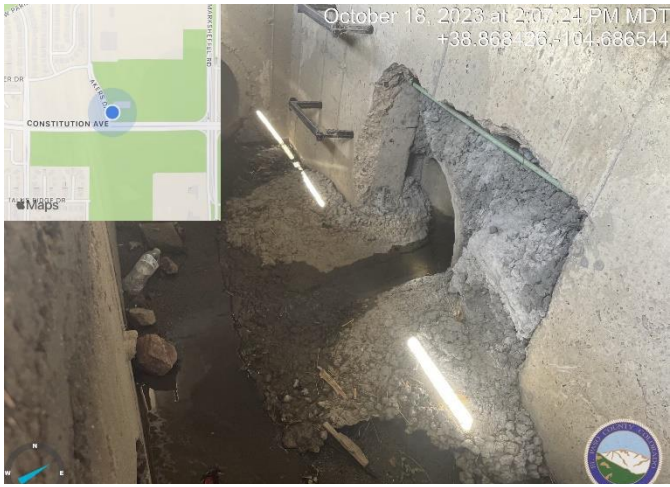


Photo 19: Finish grouting pipe collar to existing inlet on southwest corner of Akers Drive.