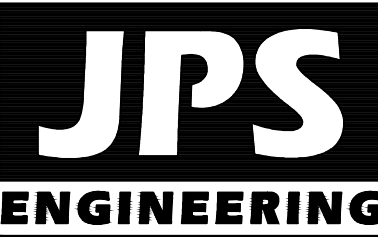
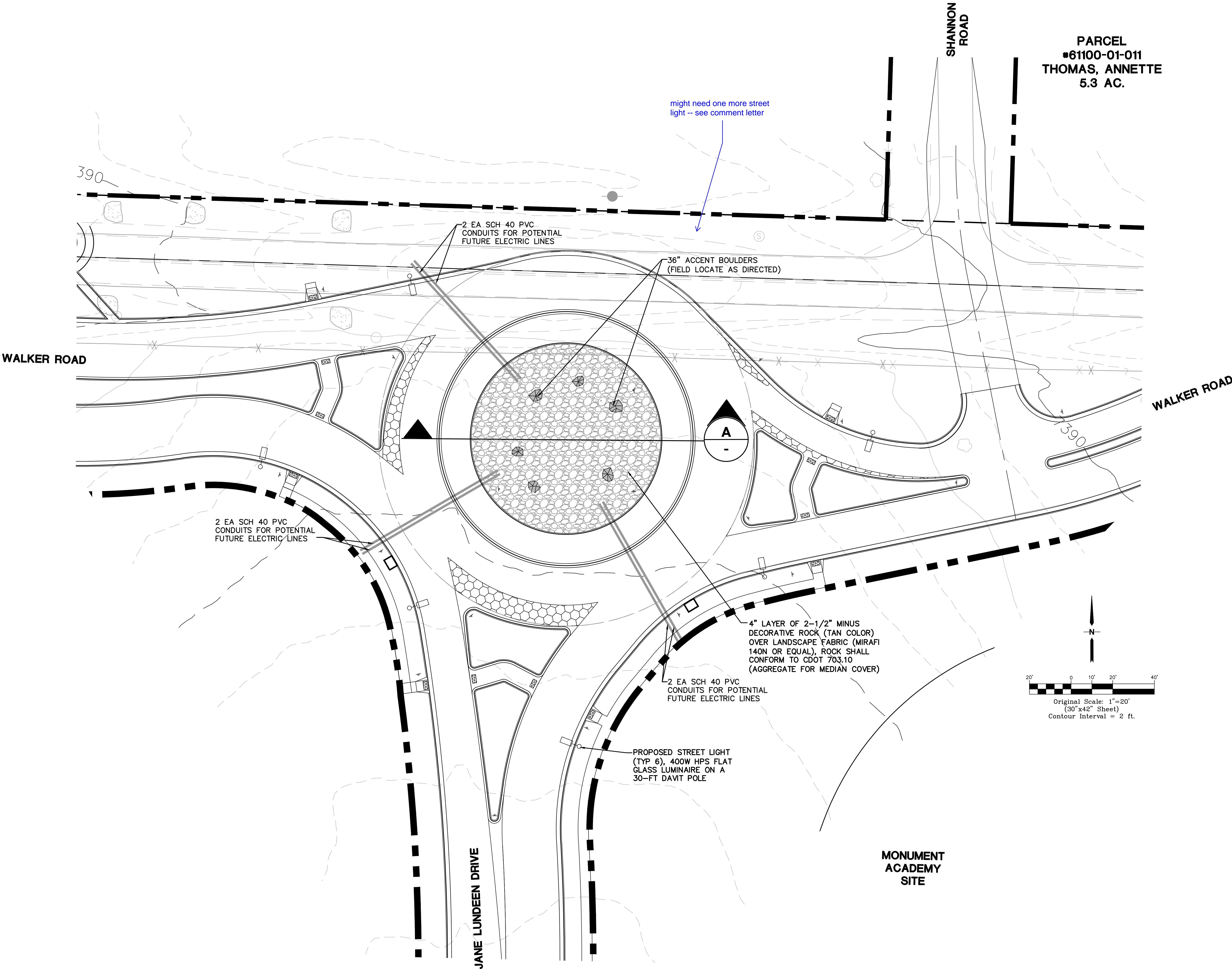


MONUMENT  
ACADEMY  
HIGH SCHOOL

FOR CONSTRUCTION

PARCEL  
#61100-01-011  
THOMAS, ANNETTE  
5.3 AC.



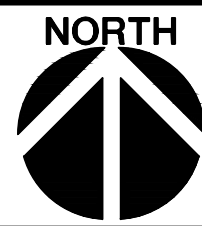
19 E. Willamette Ave.  
Colorado Springs, CO  
80903  
PH: 719-477-9429  
FAX: 719-471-0766  
www.jpsegr.com

OWNERSHIP OF INSTRUMENTS OF SERVICE:  
ALL REPORTS, PLANS, SPECIFICATIONS, COMPUTER FILES, FIELD  
DATA, NOTES AND OTHER DOCUMENTS AND INSTRUMENTS  
PREPARED BY DESIGN PROFESSIONAL AS INSTRUMENTS OF  
SERVICE SHALL REMAIN THE PROPERTY OF THE DESIGN  
PROFESSIONAL. THE DESIGN PROFESSIONAL SHALL RETAIN ALL  
COMMON LAW STATUTORY AND OTHER RESERVED RIGHTS  
INCLUDING THE COPYRIGHT THEREON.

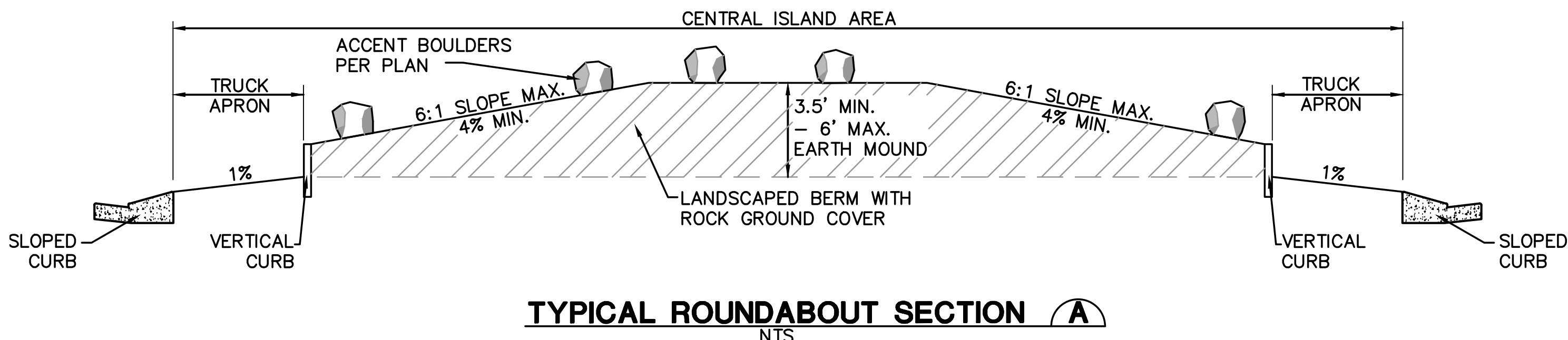
CRP ARCHITECTS AIA  
100 E. St. Vrain, Suite 300  
Colorado Springs, Colorado 80903

WALKER ROAD & JANE  
LUNDEEN DRIVE  
ROUNDBOUT  
PH. 1 LANDSCAPE &  
LIGHTING PLAN

SCALE : 1"=20'



DATE: 6/26/19  
DRAWN BY: BJJ  
CHECKED BY: JPS  
REVISED: 8/21/20



LEGEND

- PROPERTY LINE
- EASEMENT
- 6520 PROPOSED CONTOUR
- 6520 EXISTING CONTOUR
- 99.0 PROPOSED SPOT ELEVATION (FLOWLINE)
- 99.0 EXIST. SPOT ELEVATION
- PROPOSED LIGHT POLE
- NOTE: COORDINATE ELECTRIC SERVICE W/MVEA

NO.	REVISION	BY	DATE
1	COUNTY SUBMITTAL	JPS	8/04/20
2	COUNTY COMMENTS	JPS	8/21/20

PCD PROJECT NO. CDR-20-001

RD1.2