

VOLLMER RV STORAGE

SECTION 34, TOWNSHIP 12 SOUTH AND RANGE 65 WEST OF THE 6TH PRINCIPAL MERIDIAN
 COUNTY OF EL PASO
 STATE OF COLORADO



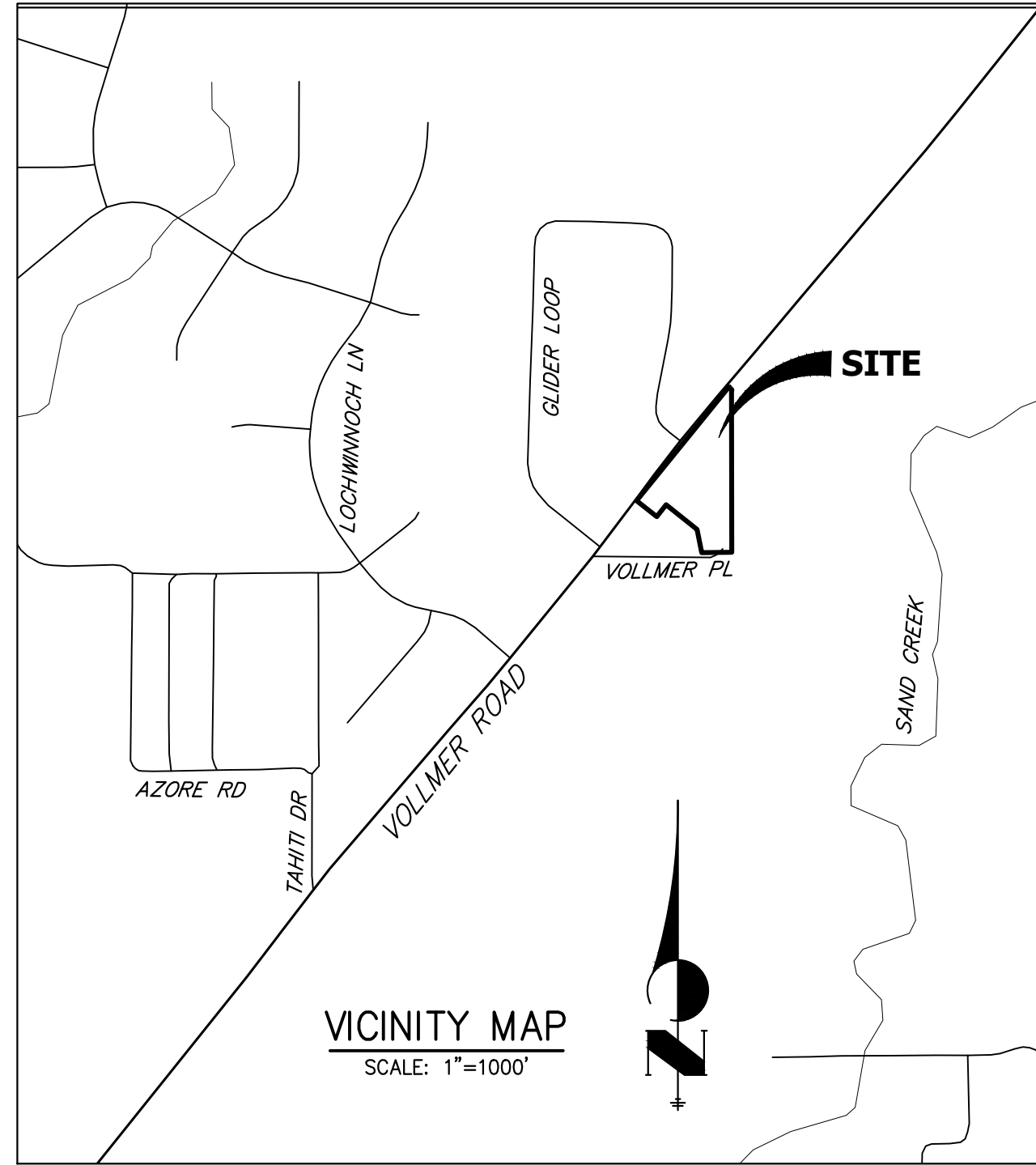
Know what's below.
 Call before you dig.

GRADING AND EROSION CONTROL STANDARD NOTES

- STORMWATER DISCHARGES FROM CONSTRUCTION SITES SHALL NOT CAUSE OR THREATEN TO CAUSE POLLUTION, CONTAMINATION, OR DEGRADATION OF STATE WATERS. ALL WORK AND EARTH DISTURBANCE SHALL BE DONE IN A MANNER THAT MINIMIZES POLLUTION OF ANY ON-SITE OR OFF-SITE WATERS, INCLUDING WETLANDS.
- NOTWITHSTANDING ANYTHING DEPICTED IN THESE PLANS IN WORDS OR GRAPHIC REPRESENTATION, ALL DESIGN AND CONSTRUCTION RELATED TO ROADS, STORM DRAINAGE AND EROSION CONTROL SHALL CONFORM TO THE STANDARDS AND REQUIREMENTS OF THE MOST RECENT VERSION OF THE RELEVANT ADOPTED EL PASO COUNTY STANDARDS, INCLUDING THE LAND DEVELOPMENT CODE, THE ENGINEERING CRITERIA MANUAL, THE DRAINAGE CRITERIA MANUAL, AND THE DRAINAGE CRITERIA MANUAL VOLUME 2. ANY DEVIATIONS FROM REGULATIONS AND STANDARDS MUST BE REQUESTED, AND APPROVED, IN WRITING.
- A SEPARATE STORMWATER MANAGEMENT PLAN (SMWP) FOR THIS PROJECT SHALL BE COMPLETED AND AN EROSION AND STORMWATER QUALITY CONTROL PERMIT (ESQCP) ISSUED PRIOR TO COMMENCING CONSTRUCTION. MANAGEMENT OF THE SWMP DURING CONSTRUCTION IS THE RESPONSIBILITY OF THE DESIGNATED QUALIFIED STORMWATER MANAGER OR CERTIFIED EROSION CONTROL INSPECTOR. THE SWMP SHALL BE LOCATED ON SITE AT ALL TIMES DURING CONSTRUCTION AND SHALL BE KEPT UP TO DATE WITH WORK PROGRESS AND CHANGES IN THE FIELD.
- ONCE THE ESQCP IS APPROVED AND A 'NOTICE TO PROCEED' HAS BEEN ISSUED, THE CONTRACTOR MAY INSTALL THE INITIAL STAGE EROSION AND SEDIMENT CONTROL MEASURES AS INDICATED ON THE APPROVED GEC. A PRECONSTRUCTION MEETING BETWEEN THE CONTRACTOR, ENGINEER, AND EL PASO COUNTY WILL BE HELD PRIOR TO ANY CONSTRUCTION. IT IS THE RESPONSIBILITY OF THE APPLICANT TO COORDINATE THE MEETING TIME AND PLACE WITH COUNTY STAFF.
- CONTROL MEASURES MUST BE INSTALLED PRIOR TO COMMENCEMENT OF ACTIVITIES THAT COULD CONTRIBUTE POLLUTANTS TO STORMWATER. CONTROL MEASURES FOR ALL SLOPES, CHANNELS, DITCHES, AND DISTURBED LAND AREAS SHALL BE INSTALLED IMMEDIATELY UPON COMPLETION OF THE DISTURBANCE.
- ALL TEMPORARY SEDIMENT AND EROSION CONTROL MEASURES SHALL BE MAINTAINED AND REMAIN IN EFFECTIVE OPERATING CONDITION UNTIL PERMANENT SOIL EROSION CONTROL MEASURES ARE IMPLEMENTED AND FINAL STABILIZATION IS ESTABLISHED. ALL PERSONS ENGAGED IN LAND DISTURBANCE ACTIVITIES SHALL ASSESS THE ADEQUACY OF CONTROL MEASURES AT THE SITE AND IDENTIFY IF CHANGES TO THOSE CONTROL MEASURES ARE NEEDED TO ENSURE THE CONTINUED EFFECTIVE PERFORMANCE OF THE CONTROL MEASURES. ALL CHANGES TO TEMPORARY SEDIMENT AND EROSION CONTROL MEASURES MUST BE INCORPORATED INTO THE STORMWATER MANAGEMENT PLAN.
- TEMPORARY STABILIZATION SHALL BE IMPLEMENTED ON DISTURBED AREAS AND STOCKPILES WHERE GROUND DISTURBING CONSTRUCTION ACTIVITY HAS PERMANENTLY CEASED OR TEMPORARILY CEASED FOR LONGER THAN 14 DAYS.
- FINAL STABILIZATION MUST BE IMPLEMENTED AT ALL APPLICABLE CONSTRUCTION SITES. FINAL STABILIZATION IS ACHIEVED WHEN ALL GROUND DISTURBING ACTIVITIES ARE COMPLETE AND ALL DISTURBED AREAS EITHER HAVE A UNIFORM VEGETATIVE COVER WITH INDIVIDUAL PLANT DENSITY OF 70 PERCENT OF PRE-DISTURBANCE LEVELS ESTABLISHED OR EQUIVALENT PERMANENT ALTERNATIVE STABILIZATION METHOD IS IMPLEMENTED. ALL TEMPORARY SEDIMENT AND EROSION CONTROL MEASURES SHALL BE REMOVED UPON FINAL STABILIZATION AND BEFORE PERMIT CLOSURE.
- ALL PERMANENT STORMWATER MANAGEMENT FACILITIES SHALL BE INSTALLED AS DESIGNED IN THE APPROVED PLANS. ANY PROPOSED CHANGES THAT AFFECT THE DESIGN OR FUNCTION OF PERMANENT STORMWATER MANAGEMENT STRUCTURES MUST BE APPROVED BY THE ECM ADMINISTRATOR PRIOR TO IMPLEMENTATION.
- EARTH DISTURBANCES SHALL BE CONDUCTED IN SUCH A MANNER SO AS TO EFFECTIVELY MINIMIZE ACCELERATED SOIL EROSION AND RESULTING SEDIMENTATION. ALL DISTURBANCES SHALL BE DESIGNED, CONSTRUCTED, AND COMPLETED SO THAT THE EXPOSED AREA OF ANY DISTURBED LAND SHALL BE LIMITED TO THE SHORTEST PRACTICAL PERIOD OF TIME. PRE-EXISTING VEGETATION SHALL BE PROTECTED AND MAINTAINED WITHIN 50 HORIZONTAL FEET OF A WATERS OF THE STATE UNLESS SHOWN TO BE INFEASIBLE AND SPECIFICALLY REQUESTED AND APPROVED.
- COMPACTION OF SOIL MUST BE PREVENTED IN AREAS DESIGNATED FOR INFILTRATION CONTROL MEASURES OR WHERE FINAL STABILIZATION WILL BE ACHIEVED BY VEGETATIVE COVER. AREAS DESIGNATED FOR INFILTRATION CONTROL MEASURES SHALL ALSO BE PROTECTED FROM SEDIMENTATION DURING CONSTRUCTION UNTIL FINAL STABILIZATION IS ACHIEVED. IF COMPACTION PREVENTION IS NOT FEASIBLE DUE TO SITE CONSTRAINTS, ALL AREAS DESIGNATED FOR INFILTRATION AND VEGETATION CONTROL MEASURES MUST BE LOOSENEED PRIOR TO INSTALLATION OF THE CONTROL MEASURE(S).
- ANY TEMPORARY OR PERMANENT FACILITY DESIGNED AND CONSTRUCTED FOR THE CONVEYANCE OF STORMWATER AROUND, THROUGH, OR FROM THE EARTH DISTURBANCE AREA SHALL BE A STABILIZED CONVEYANCE DESIGNED TO MINIMIZE EROSION AND THE DISCHARGE OF SEDIMENT OFF SITE.
- CONCRETE WASH WATER SHALL BE CONTAINED AND DISPOSED OF IN ACCORDANCE WITH THE SWMP. NO WASH WATER SHALL BE DISCHARGED TO OR ALLOWED TO ENTER STATE WATERS, INCLUDING ANY SURFACE OR SUBSURFACE STORM DRAINAGE SYSTEM OR FACILITIES. CONCRETE WASHOUTS SHALL NOT BE LOCATED IN AN AREA WHERE SHALLOW GROUNDWATER MAY BE PRESENT, OR WITHIN 50 FEET OF A SURFACE WATER BODY, CREEK OR STREAM.
- DURING DEWATERING OPERATIONS OF UNCONTAMINATED GROUND WATER MAY BE DISCHARGED ON SITE, BUT SHALL NOT LEAVE THE SITE IN THE FORM OF SURFACE RUNOFF UNLESS AN APPROVED STATE DEWATERING PERMIT IS IN PLACE.
- EROSION CONTROL BLANKETING OR OTHER PROTECTIVE COVERING SHALL BE USED ON SLOPES STEEPER THAN 3:1.
- CONTRACTOR SHALL BE RESPONSIBLE FOR THE REMOVAL OF ALL WASTES FROM THE CONSTRUCTION SITE FOR DISPOSAL IN ACCORDANCE WITH LOCAL AND STATE REGULATORY REQUIREMENTS. NO CONSTRUCTION DEBRIS, TREE SLASH, BUILDING MATERIAL WASTES OR UNUSED BUILDING MATERIALS SHALL BE BURIED, DUMPED, OR DISCHARGED AT THE SITE.
- WASTE MATERIALS SHALL NOT BE TEMPORARILY PLACED OR STORED IN THE STREET, ALLEY, OR OTHER PUBLIC WAY, UNLESS IN ACCORDANCE WITH AN APPROVED TRAFFIC CONTROL PLAN. CONTROL MEASURES MAY BE REQUIRED BY EL PASO COUNTY ENGINEERING IF DEEMED NECESSARY, BASED ON SPECIFIC CONDITIONS AND CIRCUMSTANCES.
- TRACKING OF SOILS AND CONSTRUCTION DEBRIS OFF-SITE SHALL BE MINIMIZED. MATERIALS TRACKED OFF-SITE SHALL BE CLEANED UP AND PROPERLY DISPOSED OF IMMEDIATELY.
- THE OWNER/DEVELOPER SHALL BE RESPONSIBLE FOR THE REMOVAL OF ALL CONSTRUCTION DEBRIS, DIRT, TRASH, ROCK, SEDIMENT, SOIL, AND SAND THAT MAY ACCUMULATE IN ROADS, STORM DRAINS AND OTHER DRAINAGE CONVEYANCE SYSTEMS AND STORMWATER APPURTENANCES AS A RESULT OF SITE DEVELOPMENT.
- THE QUANTITY OF MATERIALS STORED ON THE PROJECT SITE SHALL BE LIMITED, AS MUCH AS PRACTICAL, TO THAT QUANTITY REQUIRED TO PERFORM THE WORK IN AN ORDERLY SEQUENCE. ALL MATERIALS STORED ON-SITE SHALL BE STORED IN A NEAT, ORDERLY MANNER, IN THEIR ORIGINAL CONTAINERS, WITH ORIGINAL MANUFACTURER'S LABELS.
- NO CHEMICAL(S) HAVING THE POTENTIAL TO BE RELEASED IN STORMWATER ARE TO BE STORED OR USED ONSITE UNLESS PERMISSION FOR THE USE OF SUCH CHEMICAL(S) IS GRANTED IN WRITING BY THE ECM ADMINISTRATOR. IN GRANTING APPROVAL FOR THE USE OF SUCH CHEMICAL(S), SPECIAL CONDITIONS AND MONITORING MAY BE REQUIRED.
- BULK STORAGE OF ALLOWED PETROLEUM PRODUCTS OR OTHER ALLOWED LIQUID CHEMICALS IN EXCESS OF 55 GALLONS SHALL REQUIRE ADEQUATE SECONDARY CONTAINMENT PROTECTION TO CONTAIN ALL SPILLS ONSITE AND TO PREVENT ANY SPILLED MATERIALS FROM ENTERING STATE WATERS, ANY SURFACE OR SUBSURFACE STORM DRAINAGE SYSTEM OR OTHER FACILITIES.
- NO PERSON SHALL CAUSE THE IMPEDIMENT OF STORMWATER FLOW IN THE CURB AND GUTTER OR DITCH EXCEPT WITH APPROVED SEDIMENT CONTROL MEASURES.
- OWNER/DEVELOPER AND THEIR AGENTS SHALL COMPLY WITH THE 'COLORADO WATER QUALITY CONTROL ACT' (TITLE 25, ARTICLE 8, CRS), AND THE 'CLEAN WATER ACT' (33 USC 1344), IN ADDITION TO THE REQUIREMENTS OF THE LAND DEVELOPMENT CODE, DCM VOLUME II AND THE ECM APPENDIX I. ALL APPROPRIATE PERMITS MUST BE OBTAINED BY THE CONTRACTOR PRIOR TO CONSTRUCTION (1041, NPDES, FLOODPLAIN, 404(F), ETC.). IN THE EVENT OF CONFLICTS BETWEEN THESE REQUIREMENTS AND OTHER LAWS, RULES, OR REGULATIONS OF OTHER FEDERAL, STATE, LOCAL, OR COUNTY AGENCIES, THE MOST RESTRICTIVE LAWS, RULES, OR REGULATIONS SHALL APPLY.
- ALL CONSTRUCTION TRAFFIC MUST ENTER/EXIT THE SITE ONLY AT APPROVED CONSTRUCTION ACCESS POINTS.
- PRIOR TO CONSTRUCTION THE PERMITTEE SHALL VERIFY THE LOCATION OF EXISTING UTILITIES.
- A WATER SOURCE SHALL BE AVAILABLE ON SITE DURING EARTHWORK OPERATIONS AND SHALL BE UTILIZED AS REQUIRED TO MINIMIZE DUST FROM EARTHWORK EQUIPMENT AND WIND.
- A SOILS AND GEOLOGY HAZARD LETTER HAS BEEN PREPARED BY JR ENGINEERING AND SHALL BE CONSIDERED A PART OF THESE PLANS.
- AT LEAST TEN (10) DAYS PRIOR TO THE ANTICIPATED START OF CONSTRUCTION, FOR PROJECTS THAT WILL DISTURB ONE (1) ACRE OR MORE, THE OWNER OR OPERATOR OF CONSTRUCTION ACTIVITY SHALL SUBMIT A PERMIT APPLICATION FOR STORMWATER DISCHARGE TO THE COLORADO DEPARTMENT OF PUBLIC HEALTH AND ENVIRONMENT, WATER QUALITY DIVISION. THE APPLICATION CONTAINS CERTIFICATION OF COMPLETION OF A STORMWATER MANAGEMENT PLAN (SWMP), OF WHICH THIS GRADING AND EROSION CONTROL PLAN MAY BE A PART. FOR INFORMATION OR APPLICATION MATERIALS CONTACT:

COLORADO DEPARTMENT OF PUBLIC HEALTH AND ENVIRONMENT
 WATER QUALITY CONTROL DIVISION
 WQCD - PERMITS
 4300 CHERRY CREEK DRIVE SOUTH
 DENVER, CO 80246-1530
 ATTN: PERMITS UNIT

GRADING AND EROSION CONTROL PLAN



CONTACTS:

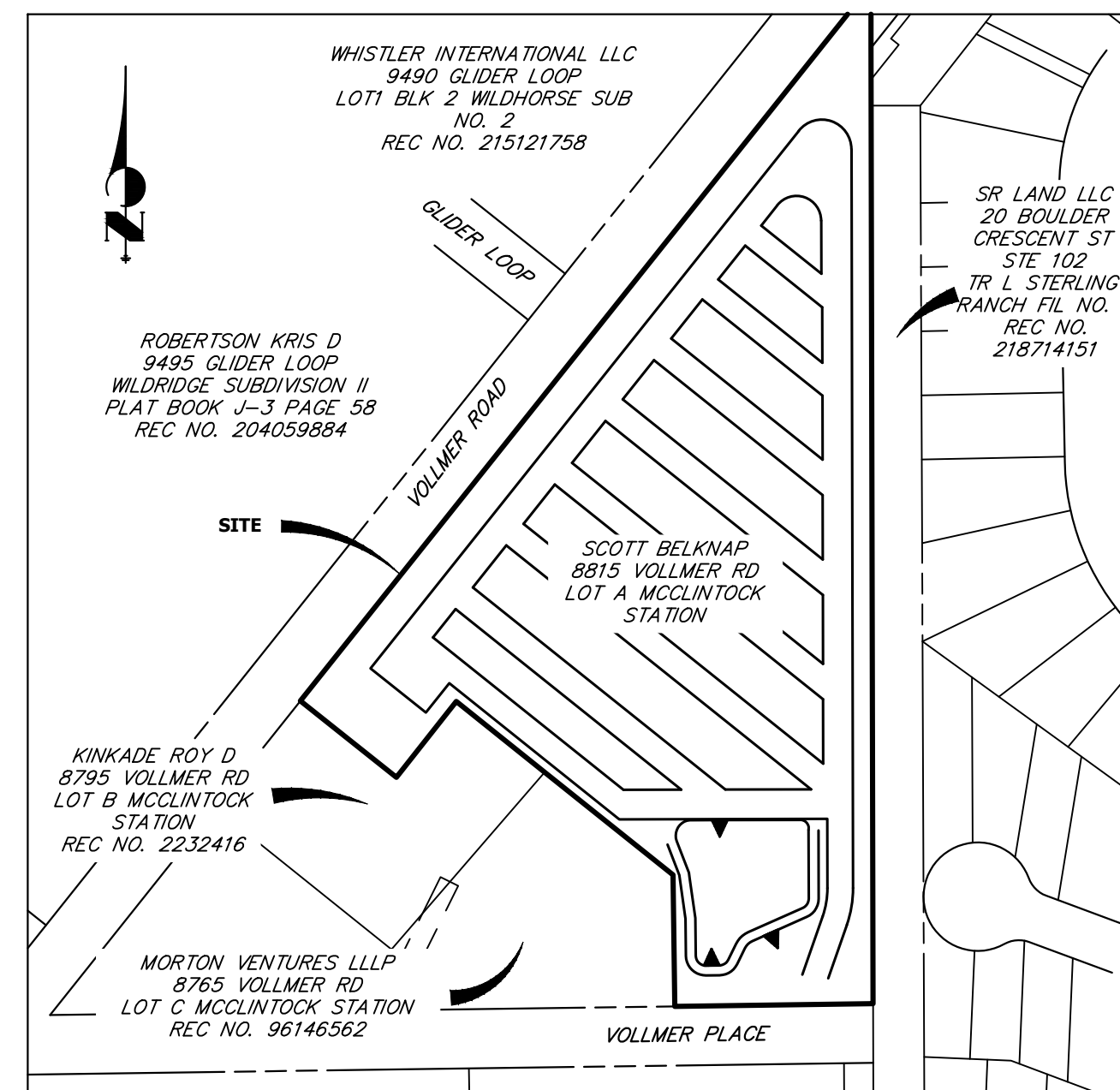
OWNER/DEVELOPER: BELKNAP VENTURES LLC
 ATTN: SCOTT BELKNAP
 3603 FIRST LIGHT DRIVE
 CASTLE ROCK, CO 80109
 P~(719) 322-3556

ENGINEER/SURVEYOR: JR ENGINEERING LLC
 ATTN: RYAN E. BURNS
 5475 TECH CENTER DRIVE, SUITE 235
 COLORADO SPRINGS, CO 80919
 P~(303) 267-6178

ELECTRIC DEPARTMENT: MOUNTAIN VIEW ELECTRIC
 1140 E. WOODMAN ROAD
 FALCON, CO 80831
 (719) 495-2283

SHEET INDEX:

1	-	COVER SHEET
2	-	LEGEND
3	-	EROSION CONTROL PLAN
4-5	-	STORM SEWER PLAN AND PROFILE
6-7	-	POND PLANS
8-11	-	POND DETAILS
12-13	-	GEC DETAILS
13	-	TOTAL SHEETS



SITE MAP
 SCALE: 1"=150'

OWNER/DEVELOPER STATEMENT

I, THE OWNER/DEVELOPER HAVE READ AND WILL COMPLY WITH THE REQUIREMENT OF THE GRADING AND EROSION CONTROL PLANS.

SCOTT BELKNAP
 DATE: 1/22/23

3603 FIRST LIGHT DRIVE
 CASTLE ROCK, CO 80109

EL PASO COUNTY STATEMENT

COUNTY PLAN REVIEW IS PROVIDED ONLY FOR GENERAL CONFORMANCE WITH COUNTY DESIGN CRITERIA. THE COUNTY IS NOT RESPONSIBLE FOR THE ACCURACY AND ADEQUACY OF THE DESIGN, DIMENSIONS, AND/OR ELEVATIONS WHICH SHALL BE CONFIRMED AT THE JOB SITE. THE COUNTY THROUGH THE APPROVAL OF THIS DOCUMENT ASSUMES NO RESPONSIBILITY FOR COMPLETENESS AND/OR ACCURACY OF THIS DOCUMENT.

FILED IN ACCORDANCE WITH THE REQUIREMENTS OF THE EL PASO COUNTY LAND DEVELOPMENT CODE, DRAINAGE CRITERIA MANUAL, VOLUMES 1 AND 2, AND ENGINEERING CRITERIA MANUAL AS AMENDED.

IN ACCORDANCE WITH ECM SECTION 1.12, THESE CONSTRUCTION DOCUMENTS WILL BE VALID FOR CONSTRUCTION FOR A PERIOD OF 2 YEARS FROM THE DATE SIGNED BY THE EL PASO COUNTY ENGINEER. IF CONSTRUCTION HAS NOT STARTED WITHIN THOSE 2 YEARS, THE PLANS WILL NEED TO BE RESUBMITTED FOR APPROVAL, INCLUDING PAYMENT OF REVIEW FEES AT THE PLANNING AND COMMUNITY DEVELOPMENT DIRECTORS DISCRETION.

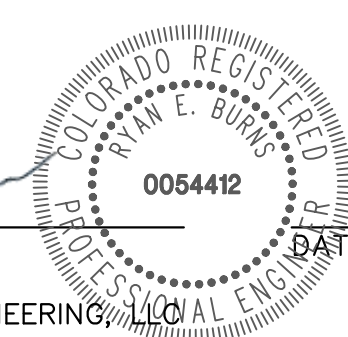
JOSHUA PALMER, P.E. DATE

COUNTY ENGINEER/ECM ADMINISTRATOR

ENGINEER'S STATEMENT

THIS GRADING AND EROSION CONTROL PLAN WAS PREPARED UNDER MY DIRECTION AND SUPERVISION AND IS CORRECT TO THE BEST OF MY KNOWLEDGE AND BELIEF. SAID PLAN HAS BEEN PREPARED ACCORDING TO THE CRITERIA ESTABLISHED BY THE COUNTY FOR GRADING AND EROSION CONTROL PLANS. I ACCEPT RESPONSIBILITY FOR ANY LIABILITY CAUSED BY ANY NEGLIGENT ACTS, ERRORS OR OMISSIONS ON MY PART IN PREPARING THIS PLANS.

RYAN E. BURNS, P.E.
 COLORADO P.E. 0054412
 FOR AND ON BEHALF OF JR ENGINEERING



3/26/24

VOLLMER RV STORAGE	BY	DATE	REVISION
COVER SHEET	H-SCALE	N/A	N/A
	V-SCALE	N/A	N/A
SHEET 1 OF 13	DESIGNED BY	DATE	01/15/24
	DRAWN BY	PAL	PAL
JOB NO. 25251.00	CHECKED BY		

PREPARED FOR
BELKNAP VENTURES LLC
 3603 FIRST LIGHT DRIVE
 CASTLE ROCK, CO 80109
 (719) 322-3556
 SCOTT.BELKNAP@YAHOO.COM
 ATTN: SCOTT BELKNAP

J.R. ENGINEERING
 A Westman Company
 Centennial 300-740-9888 • Colorado Springs 719-583-2583
 Fort Collins 970-491-9888 • www.jrengineering.com

PPR-22-045

UNTIL SUCH TIME AS THESE DRAWINGS ARE APPROVED BY THE AGENCIES, OR ENGINEERING APPROVES THEIR USE, THESE DRAWINGS ARE DESIGNATED BY WRITTEN AUTHORIZATION.

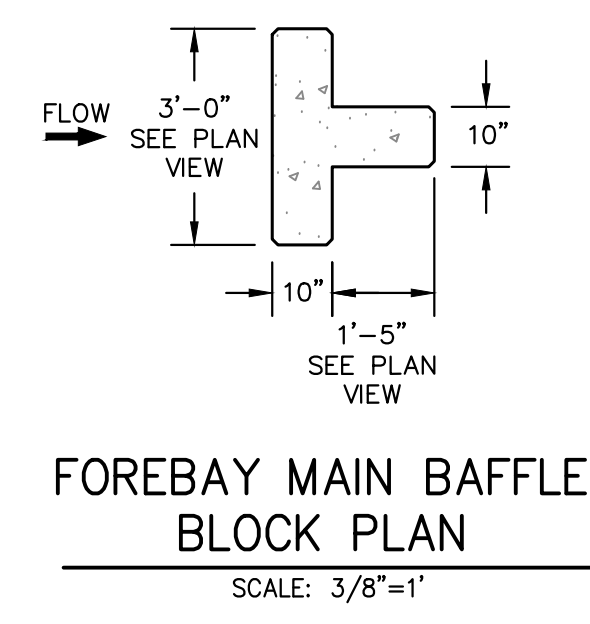
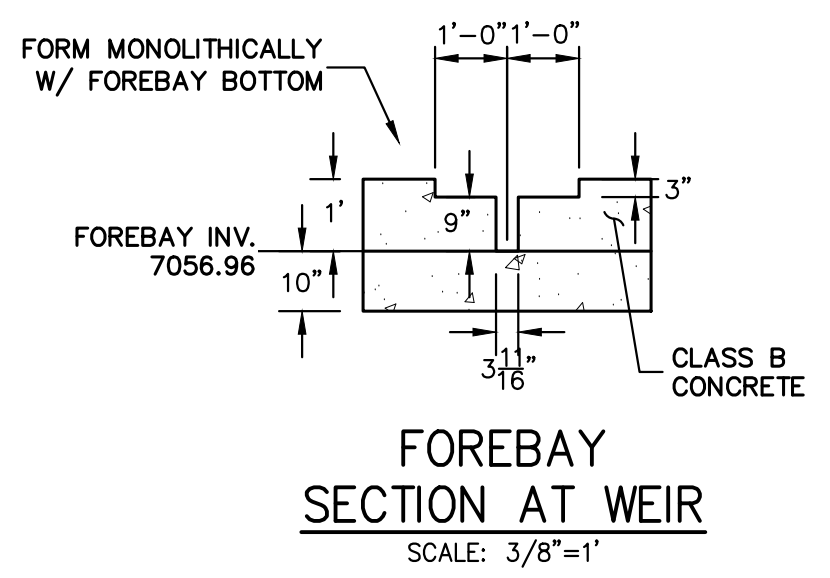
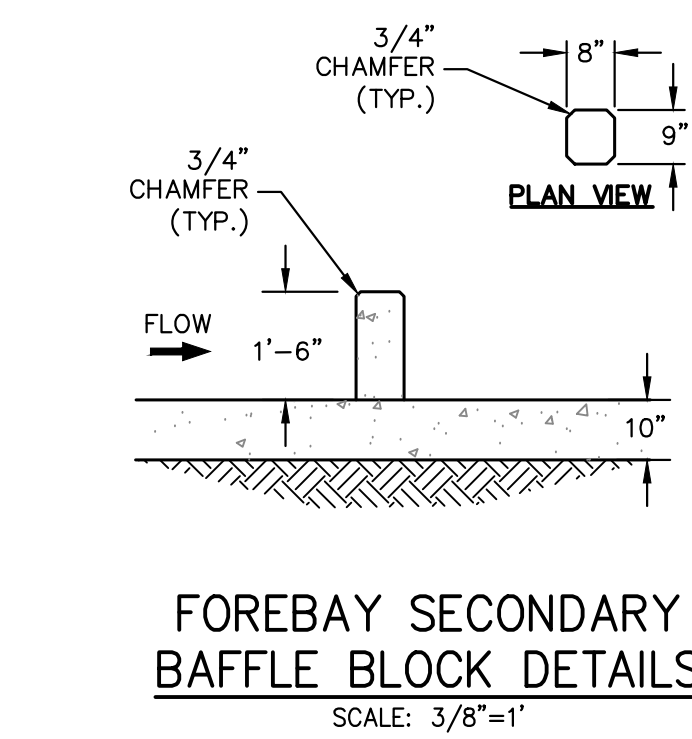
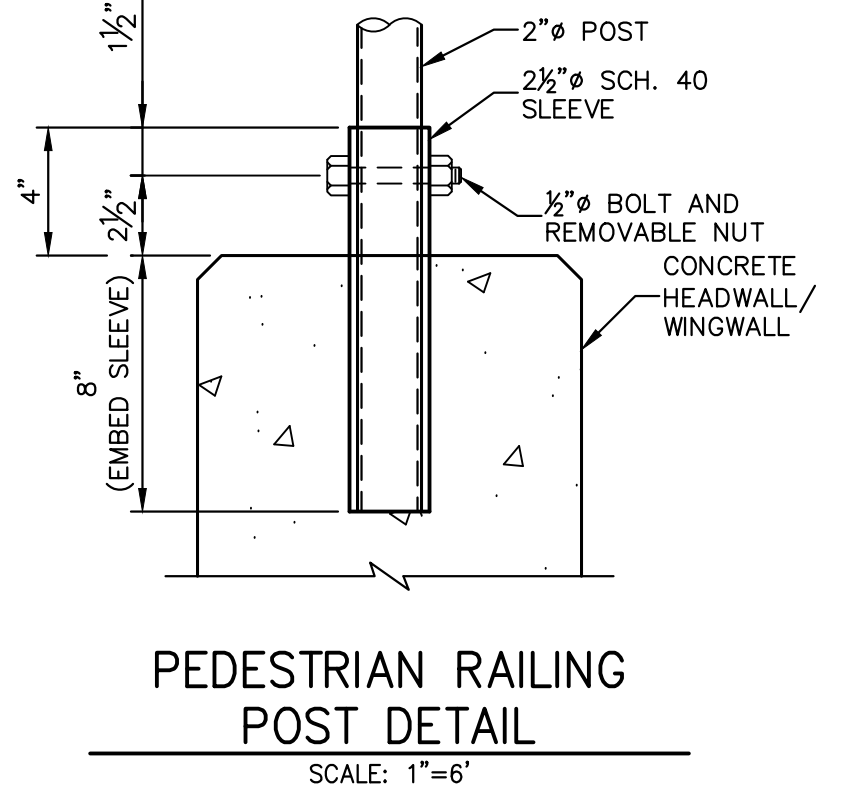
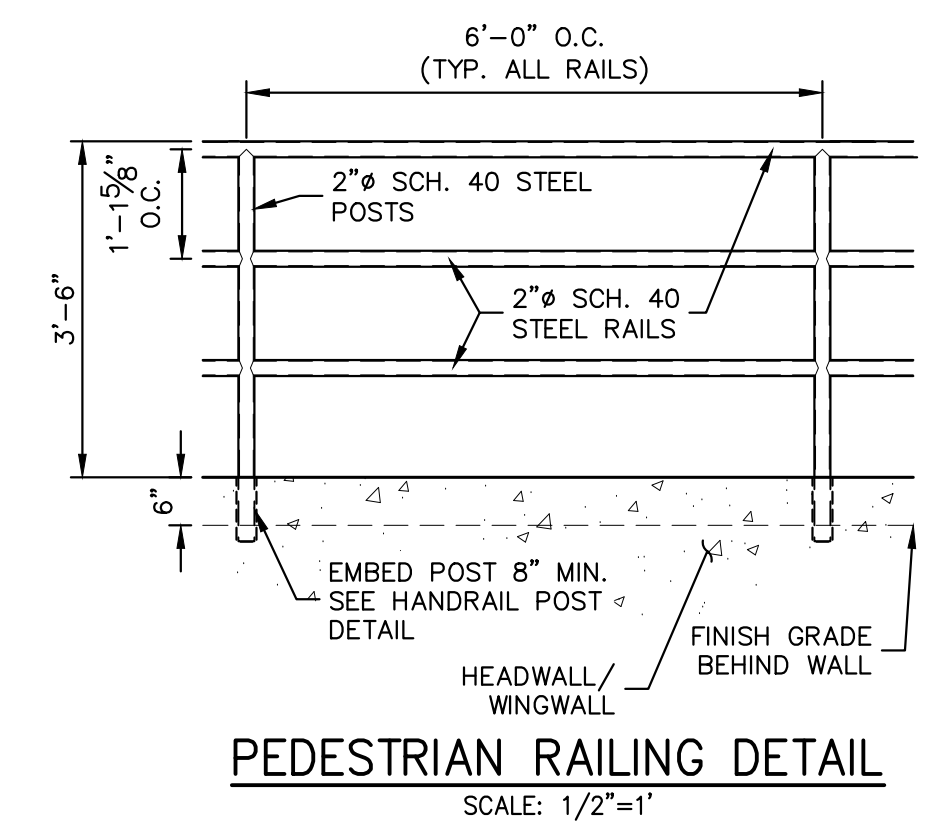
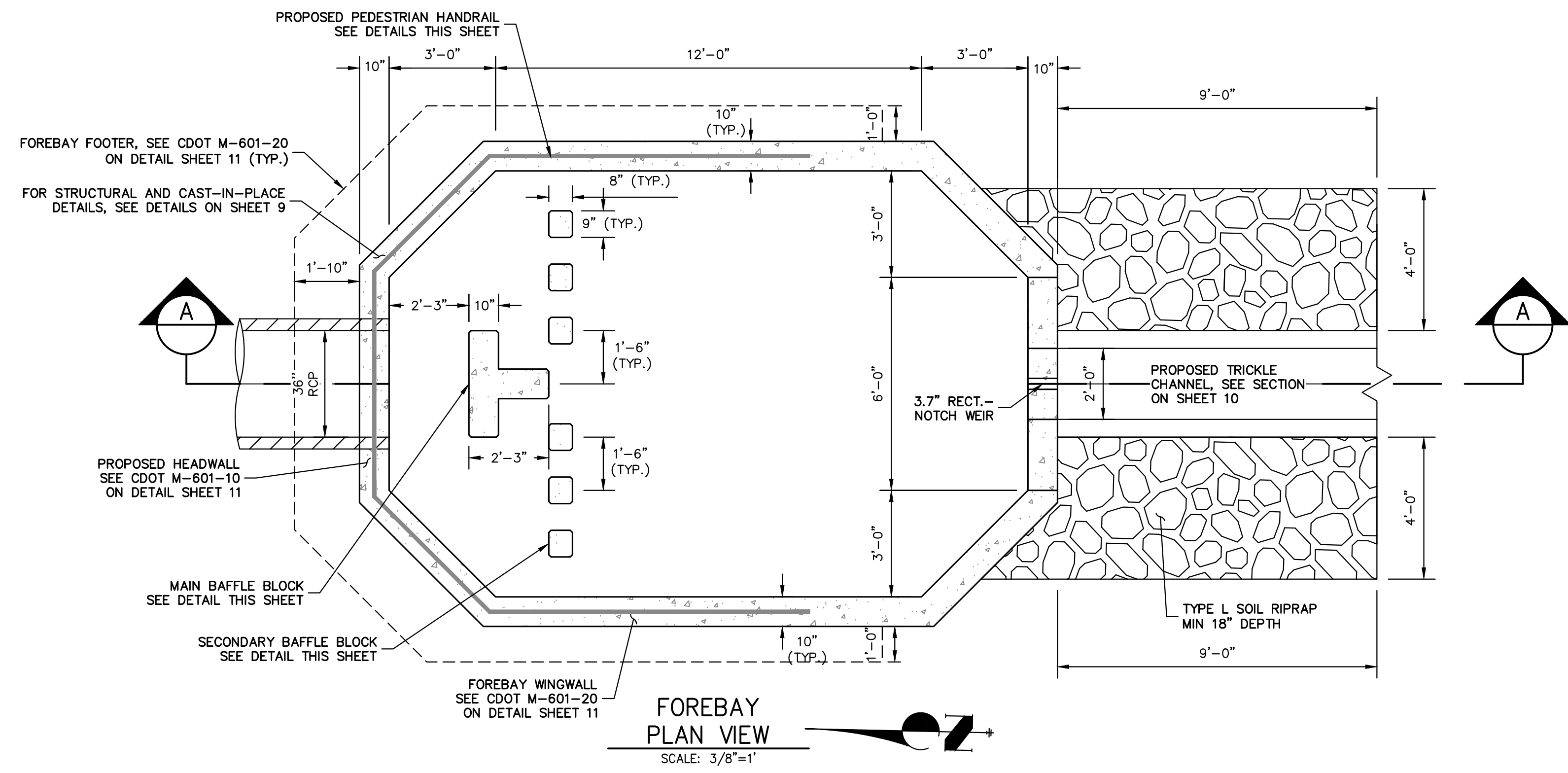
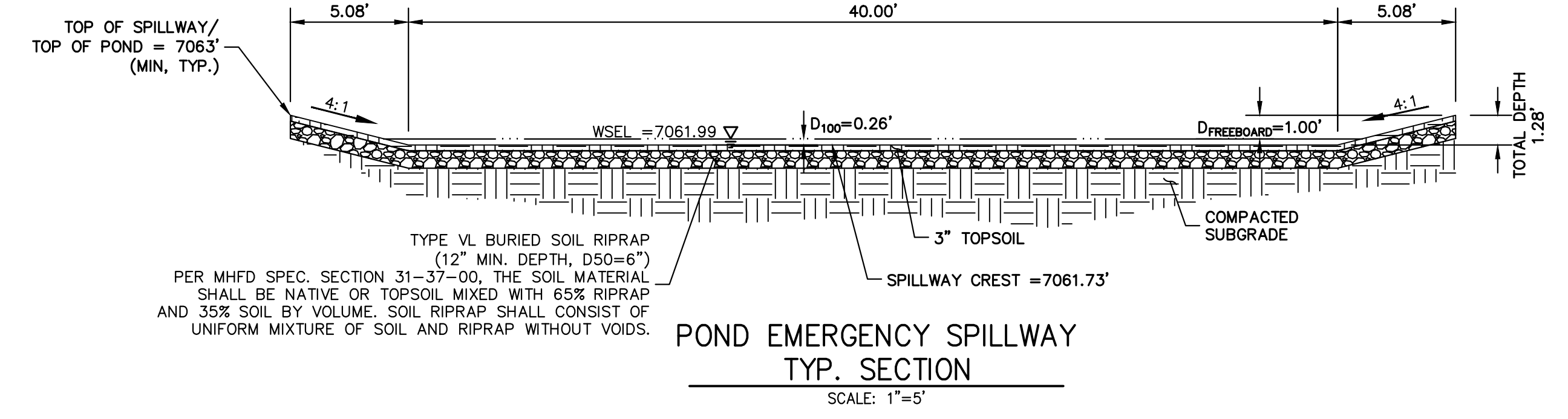
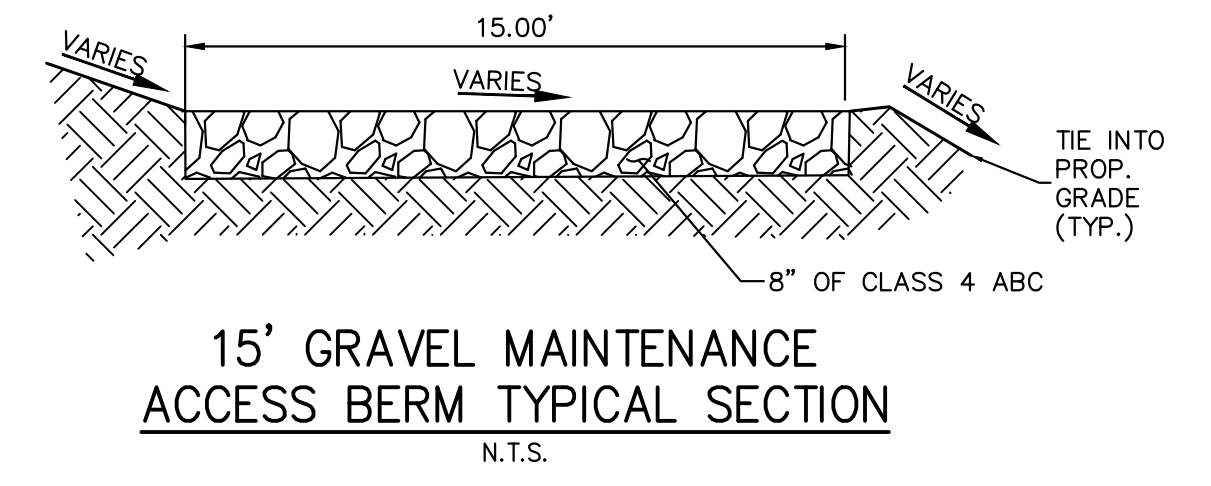
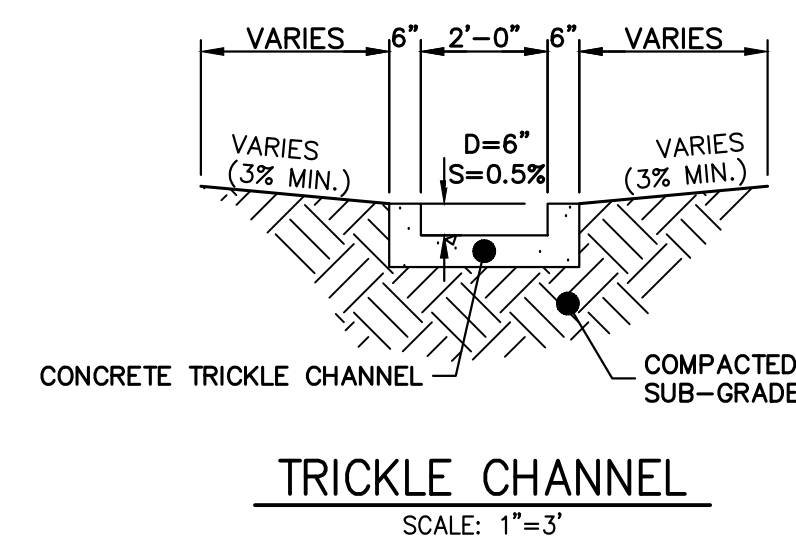
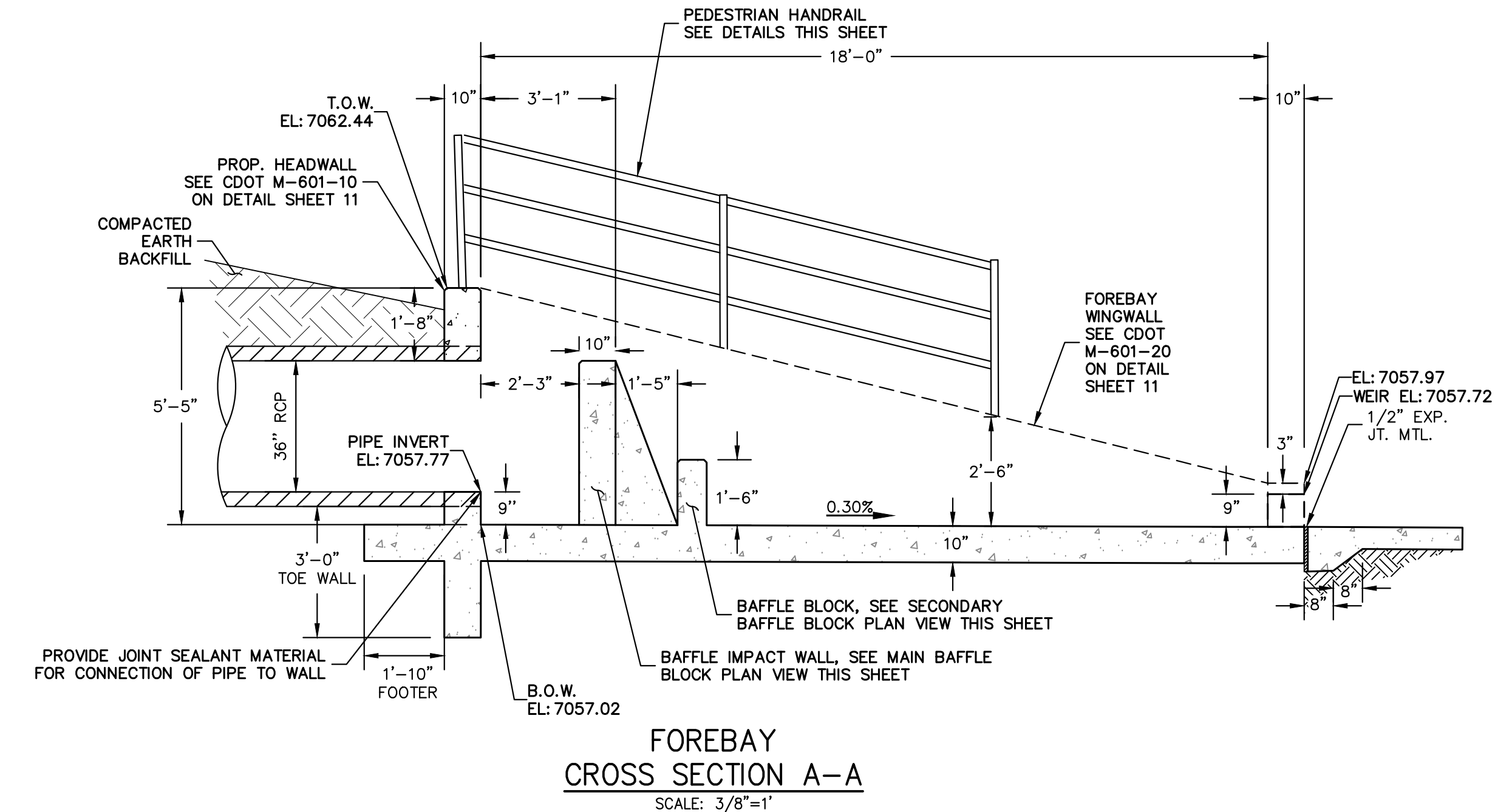
PREPARED FOR
BELKNAP VENTURES LLC
 3603 FIRST LIGHT DRIVE
 CASTLE ROCK, CO 80109
 (719) 322-3556
 SCOTT.BELKNAP@YAHOO.COM
 ATTN: SCOTT BELKNAP

J.R. ENGINEERING
 A Westman Company
 Centennial 300-740-9888 • Colorado Springs 719-583-2583
 Fort Collins 970-491-9888 • www.jrengineering.com

NO.	REVISION	BY	DATE

H-SCALE	V-SCALE	DATE	DESIGNED BY	DRAWN BY	CHECKED BY
VARIES	VARIES	01/15/24	APL	APL	

VOLLMER RV STORAGE	POND DETAILS
SHEET 8 OF 13	JOB NO. 25251.00

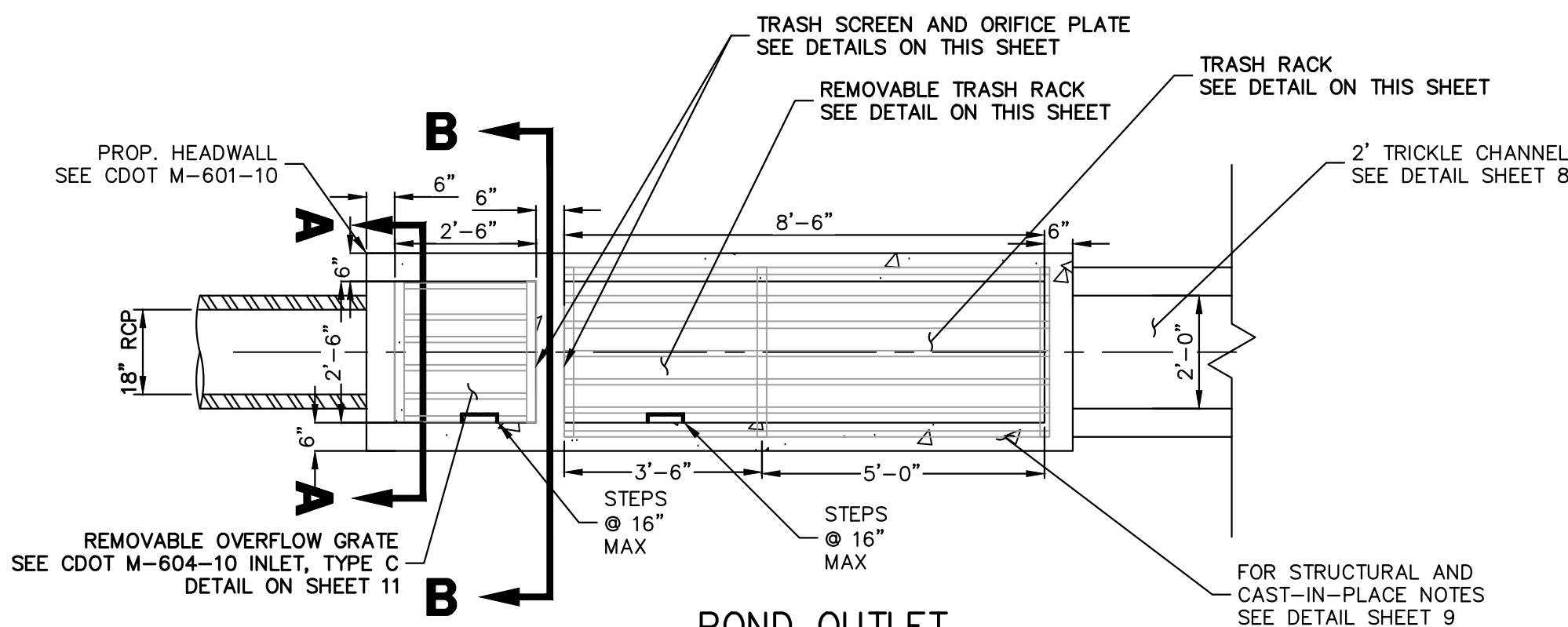


ENGINEER'S STATEMENT

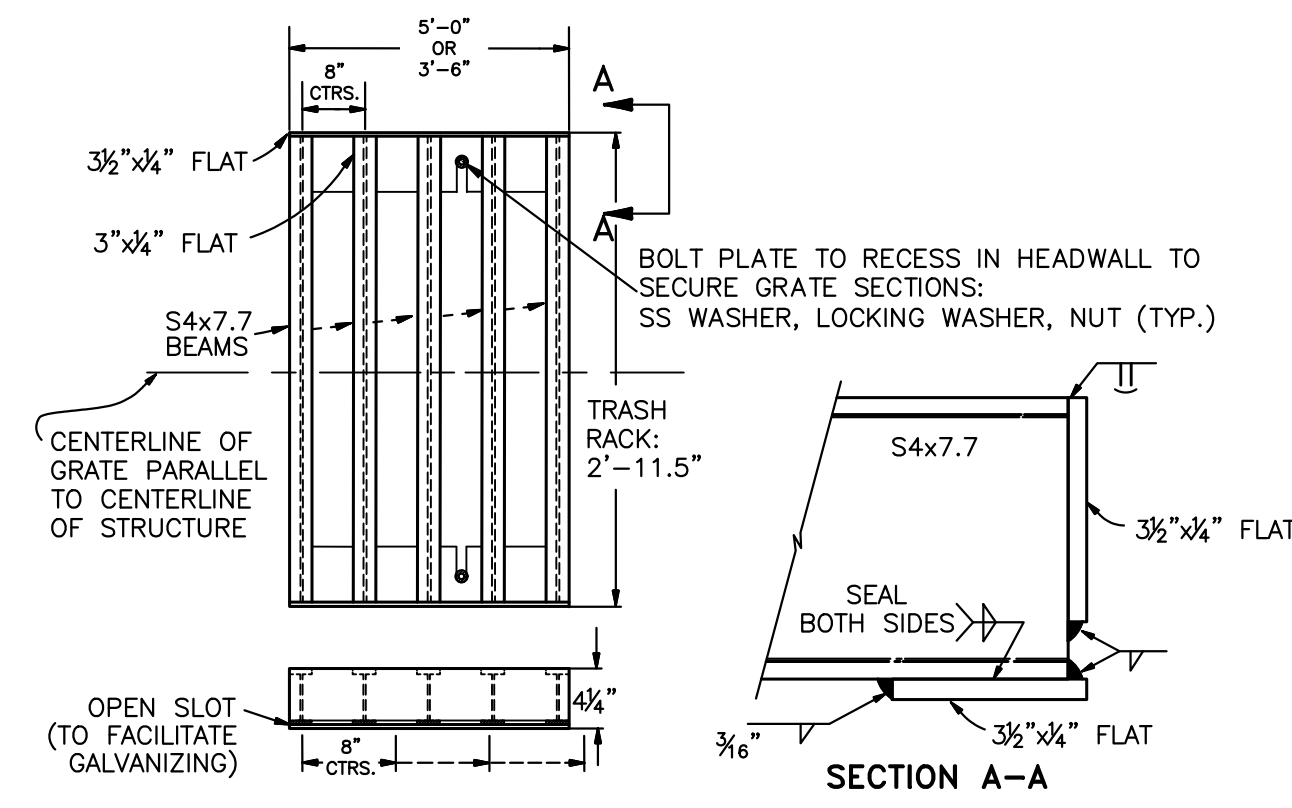
THIS GRADING AND EROSION CONTROL PLAN WAS PREPARED UNDER MY DIRECTION AND SUPERVISION AND IS CORRECT TO THE BEST OF MY KNOWLEDGE AND BELIEF. SAID PLAN HAS BEEN PREPARED ACCORDING TO THE CRITERIA ESTABLISHED BY THE COUNTY FOR GRADING AND EROSION CONTROL PLANS. I ACCEPT RESPONSIBILITY FOR ANY LIABILITY CAUSED BY ANY NEGLIGENT ACTS, ERRORS OR OMISSIONS ON MY PART IN PREPARING THIS PLANS.

RYAN E. BURNS, P.E.
 COLORADO P.E. 0054412
 FOR AND ON BEHALF OF JR ENGINEERING

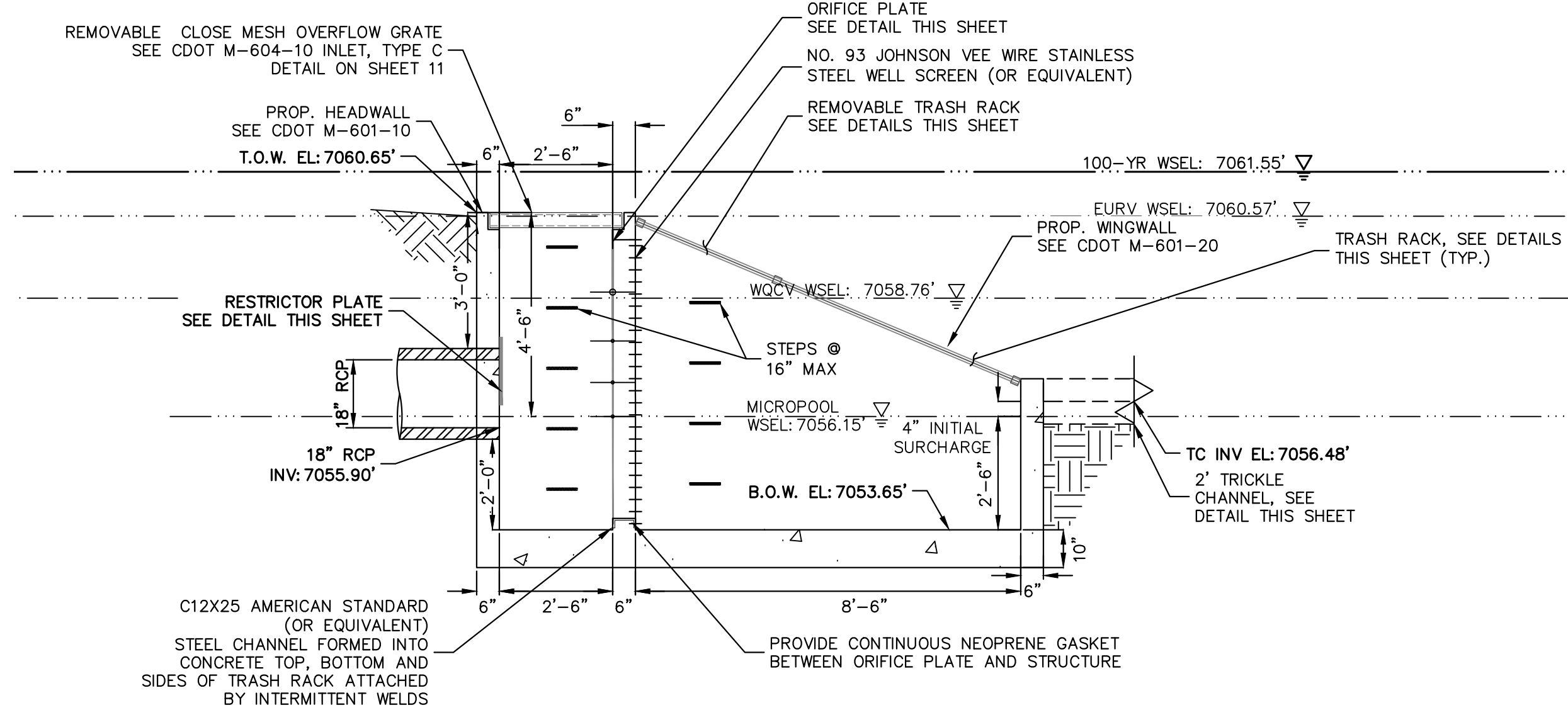
0054412
 3/26/24
 DATE



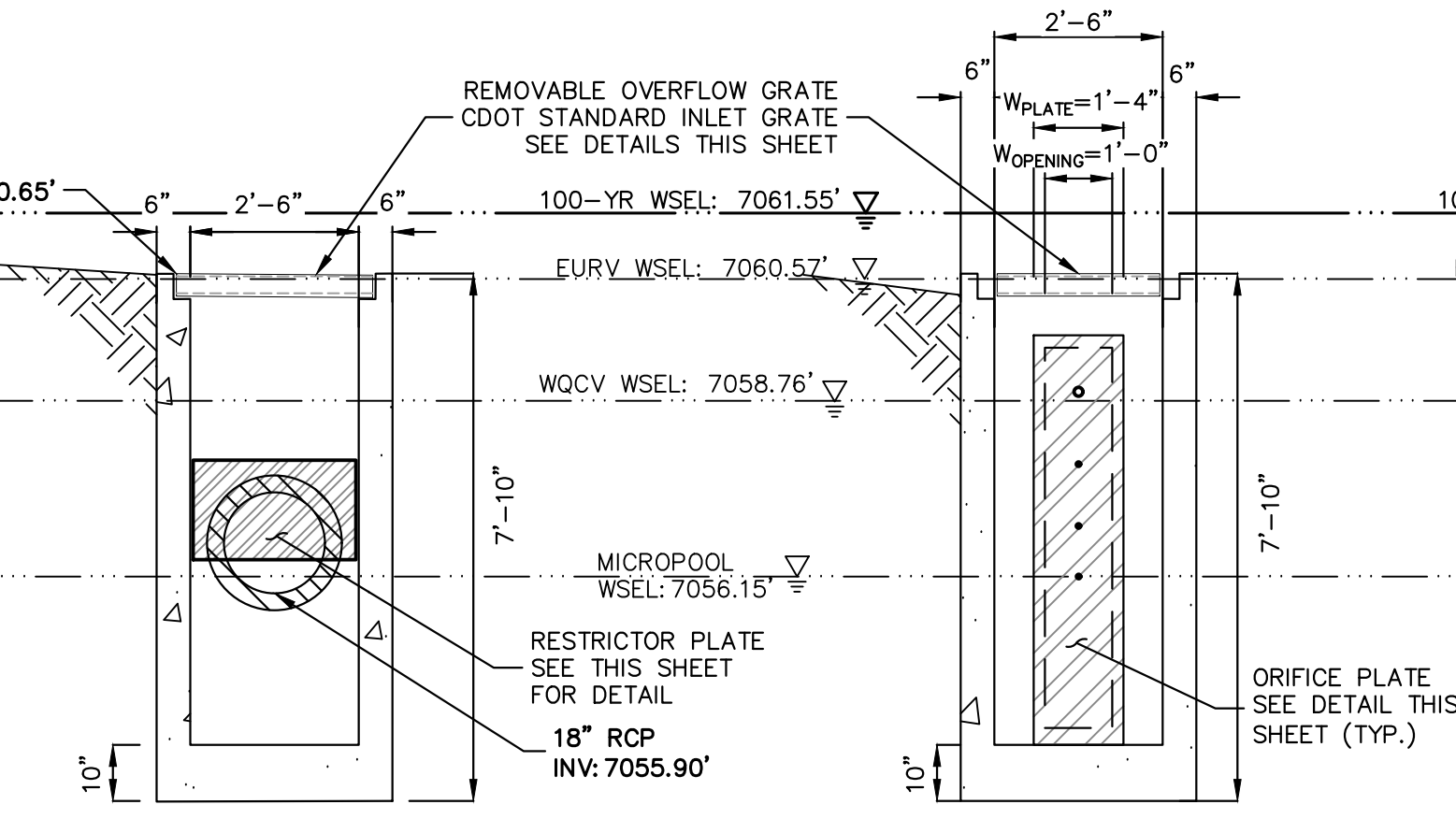
POND OUTLET STRUCTURE PLAN
SCALE: 3/8" = 1"



TRASH RACK DETAILS
N.T.S.

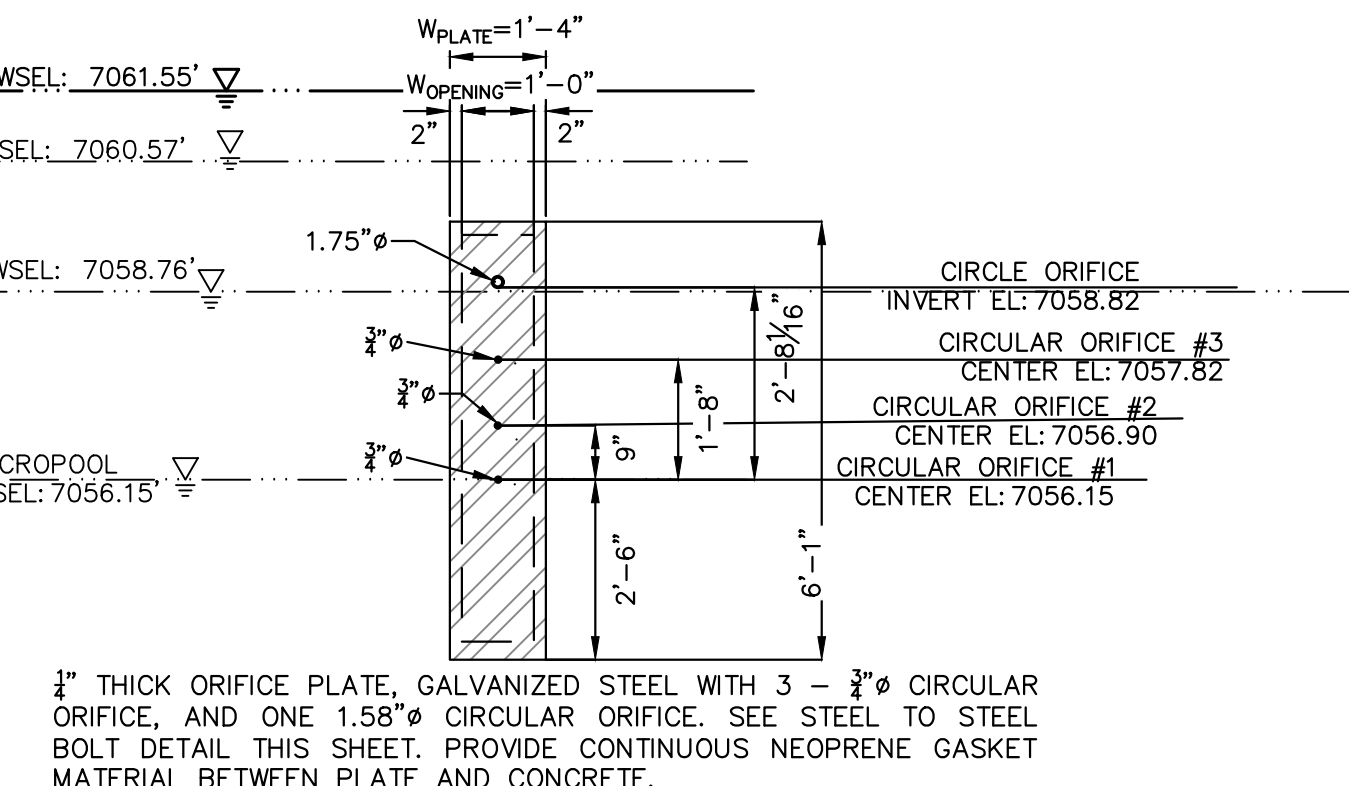


POND OUTLET STRUCTURE PROFILE
SCALE: 3/8" = 1"

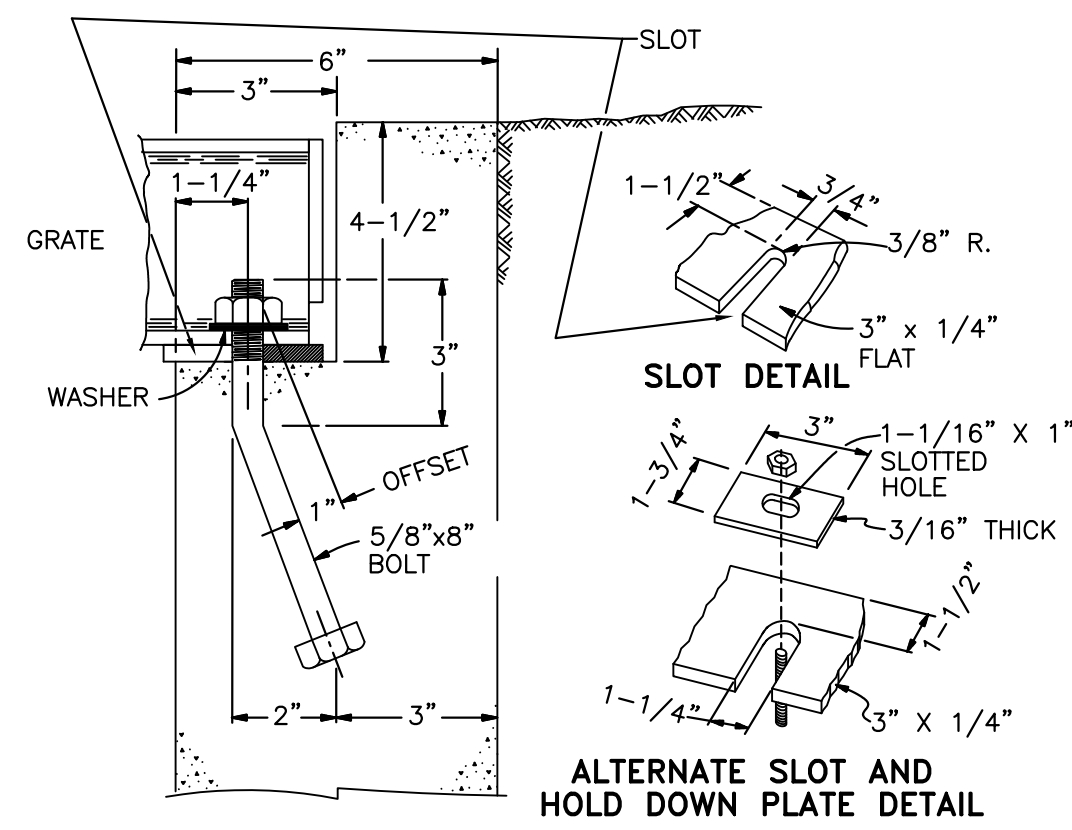


A A SECTION
SCALE: 3/8" = 1"

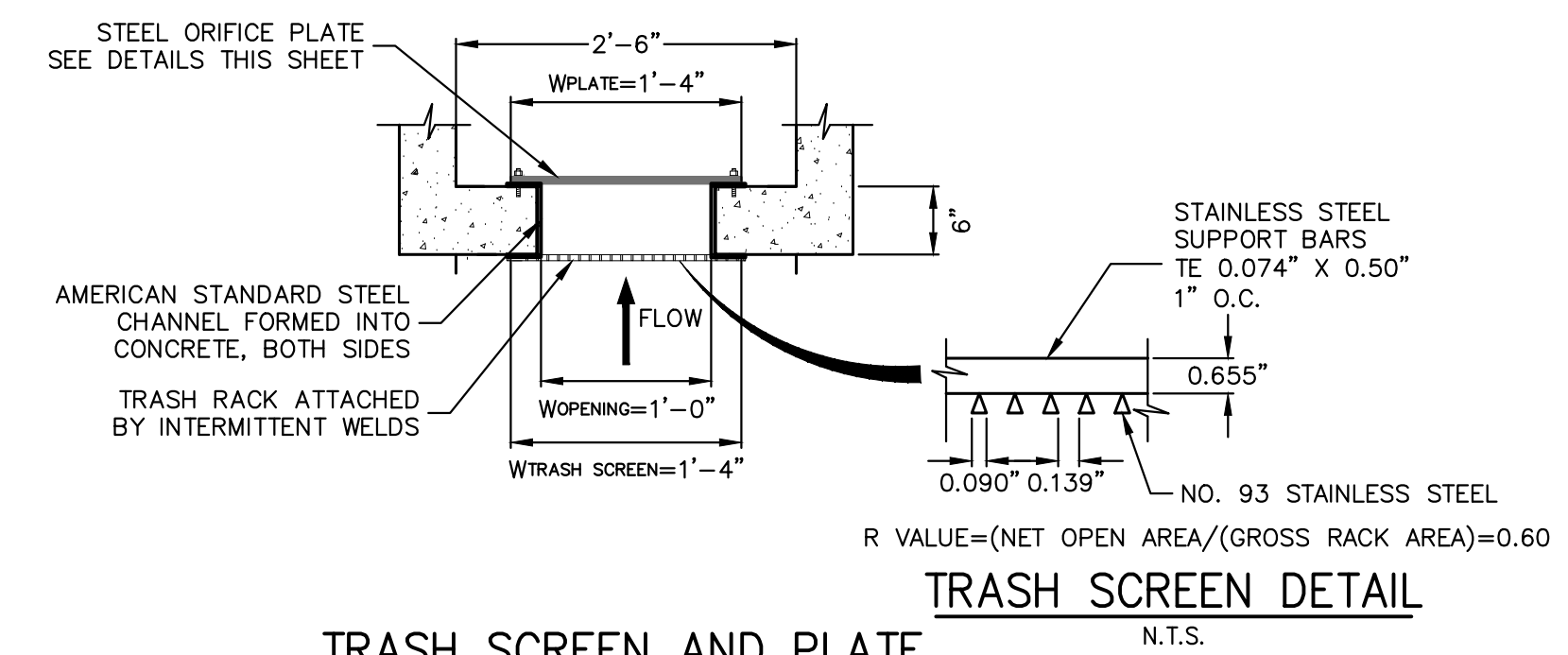
B B SECTION
SCALE: 3/8" = 1"



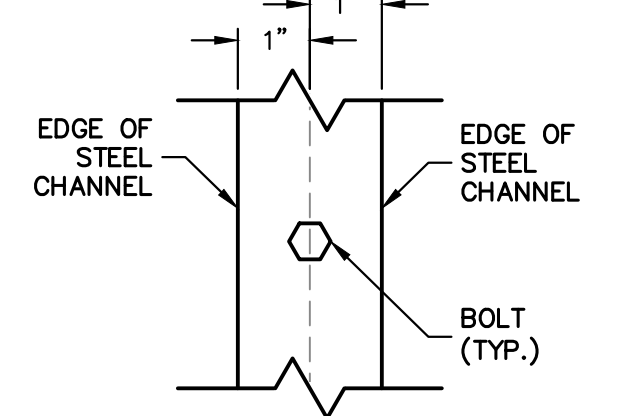
ORIFICE PLATE DETAIL
SCALE: 3/8" = 1"



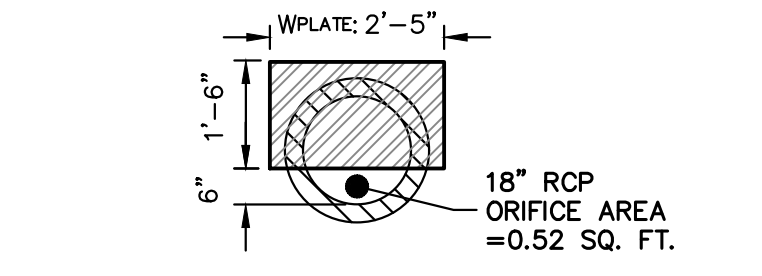
OVERFLOW GRATE/ TRASH RACK INSTALLATION DETAIL
N.T.S.



TRASH SCREEN AND PLATE DETAIL (PLAN)
N.T.S.



BOLT DETAIL-STEEL TO STEEL
N.T.S.



RESTRICTOR PLATE DETAIL
SCALE: 3/8" = 1"

ENGINEER'S STATEMENT
THIS GRADING AND EROSION CONTROL PLAN WAS PREPARED UNDER MY DIRECTION AND SUPERVISION AND IS CORRECT TO THE BEST OF MY KNOWLEDGE AND BELIEF. SAID PLAN HAS BEEN PREPARED ACCORDING TO THE CRITERIA ESTABLISHED BY THE COUNTY FOR GRADING AND EROSION CONTROL PLANS. I ACCEPT RESPONSIBILITY FOR ANY LIABILITY CAUSED BY ANY NEGLIGENT ACTS, ERRORS OR OMISSIONS ON MY PART IN PREPARING THIS PLANS.

RYAN E. BURNS, P.E.
COLORADO P.E. 0054412
FOR AND ON BEHALF OF JR ENGINEERING

0054412
3/26/24

VOLLMER RV STORAGE
POND DETAILS
SHEET 9 OF 13
JOB NO. 25251.00

J.R. ENGINEERING
A Westman Company
Central 303-740-9888 • Colorado Springs 719-588-2583
Fort Collins 970-491-9888 • www.jrengineering.com

PREPARED FOR
BELKNAP VENTURES LLC
3603 FIRST LIGHT DRIVE
CASTLE ROCK, CO 80109
(719)-322-3556
SCOTT.BELKNAP@YAHOO.COM
ATTN: SCOTT BELKNAP

UNLIT SUCH TIME AS THESE DRAWINGS ARE APPROVED BY THE AGENCIES, OR ENGINEERING APPROVES THEIR USE. DESIGNATED BY WRITTEN AUTHORIZATION.



X:\2525100\Drawings\Sheet\Drawings\Sheet\2525100D101.dwg, Pond D102, 1/16/2024, 7:13:30 AM, CS

GENERAL STRUCTURE NOTES:

ALL WORK SHALL BE DONE IN ACCORDANCE WITH CITY OR COUNTY STANDARD CONSTRUCTION SPECIFICATIONS. EXCEPT AS SHOWN IN THE PLANS, STRUCTURE EXCAVATION AND BACKFILL SHALL BE IN ACCORDANCE WITH CDOT M-206-1, AND M-206-2 EXPANSION JOINT MATERIAL SHALL MEET AASHTO SPECIFICATION M-213

THE INFORMATION SHOWN ON THESE PLANS CONCERNING THE TYPE AND LOCATION OF UNDERGROUND UTILITIES IS NOT GUARANTEED TO BE ACCURATE OR ALL INCLUSIVE. THE CONTRACTOR IS RESPONSIBLE FOR MAKING HIS OWN DETERMINATION AS TO THE TYPE AND LOCATION OF UNDERGROUND UTILITIES AS MAY BE NECESSARY TO AVOID DAMAGE THERETO. THE CONTRACTOR SHALL CONTACT THE UTILITY NOTIFICATION CENTER OF COLORADO A 1-800-922-1987 AT LEAST 2 DAYS (NOT INCLUDING THE DAY OF NOTIFICATION) PRIOR TO ANY EXCAVATION OF OTHER.

THE CONTRACTOR IS SOLELY RESPONSIBLE FOR DESIGNING AND PROVIDING ALL BRACING AND SHORING AS REQUIRED FOR THE PROTECTION OF LIFE AND PROPERTY DURING CONSTRUCTION. THE CONTRACTOR IS SOLELY RESPONSIBLE FOR THE EXCAVATION PROCEDURES INCLUDING ANY SHORING REQUIRED FOR THE PROTECTION OF LIFE AND PROPERTY DURING CONSTRUCTION.

THE CONTRACTOR IS SOLELY RESPONSIBLE FOR ALL METHODS AND MEANS OF CONSTRUCTION AS WELL AS ALL JOB SITE SAFETY & HEALTH PRECAUTIONS.

ALL SOILS WORK INCLUDING (BUT NOT LIMITED TO) PIER DRILLING AND CONSTRUCTION, SOILS EXCAVATION, FILL PLACEMENT, AND STRUCTURE BACKFILL SHALL BE IN ACCORDANCE WITH THE PROJECT GEOTECHNICAL REPORT, UNLESS MORE STRINGENT REQUIREMENTS ARE PRINTED ON THE "IRRIGATION NOTES".

BACKFILL SHALL NOT BEGIN UNTIL CONCRETE WALLS REACH COMPRESSION STRENGTH AT LEAST 80 PERCENT OF THE REQUIRED 28 DAY STRENGTH, 0.8fc'.

REINFORCED CONCRETE:
CLASS D CONCRETE: fc=4,500 psi
REINFORCING STEEL: fy=60,000 psi
ALL CAST-IN-PLACE CONCRETE SHALL BE CLASS D UNLESS NOTED OTHERWISE.

REINFORCING BARS SHALL CONFORM TO ASTM A615, GRADE 60 U.N.O.
REINFORCING BARS TO BE WELDED SHALL CONFORM TO ASTM A706, GRADE 60.
ALL REINFORCING, EXCEPT PIER REINFORCING, SHALL BE EPOXY COATED AND SHALL CONFORM TO ASTM A775.
ALL REINFORCING SHALL HAVE 2" CONCRETE COVER, U.N.O. ON PLANS, 3" AGAINST GROUND (BOTTOM SLAB)
ALL REINFORCING SHALL BE HOOKED AROUND CORNERS AND LAPPED, SEE DETAILS.
ALL LAP SPICE LOCATIONS SHALL BE SUBMITTED TO ENGINEER FOR REVIEW AND APPROVAL PRIOR TO CONSTRUCTION.

THE FOLLOWING TABLE GIVES THE MINIMUM CLASS B (STAGGERED) LAP SPICE LENGTH FOR EPOXY COATED REINFORCING BARS PLACE IN ACCORDANCE WITH SUBSECTION 602.06. THESE SPICE LENGTHS SHALL BE INCREASED BY 25% FOR BARS SPACED AT LESS THAN 6" ON CENTER. INCREASED BY 40% FOR HORIZONTAL BARS WITH MORE THAN 12" OF CONCRETE BELOW (TOP BARS.), AND INCREASED BY 75% IF BOTH CONDITIONS EXIST. THE INCREASES ABOVE FOR #6 THRU #11 BARS MAY BE 25%, 13%, AND 42% RESPECTIVELY.

#4	1'-3"	#5	1'-7"
#6	2'-5"	#7	2'-10"
#8	3'-8"	#9	4'-8"
#10	5'-11"	#11	7'-3"

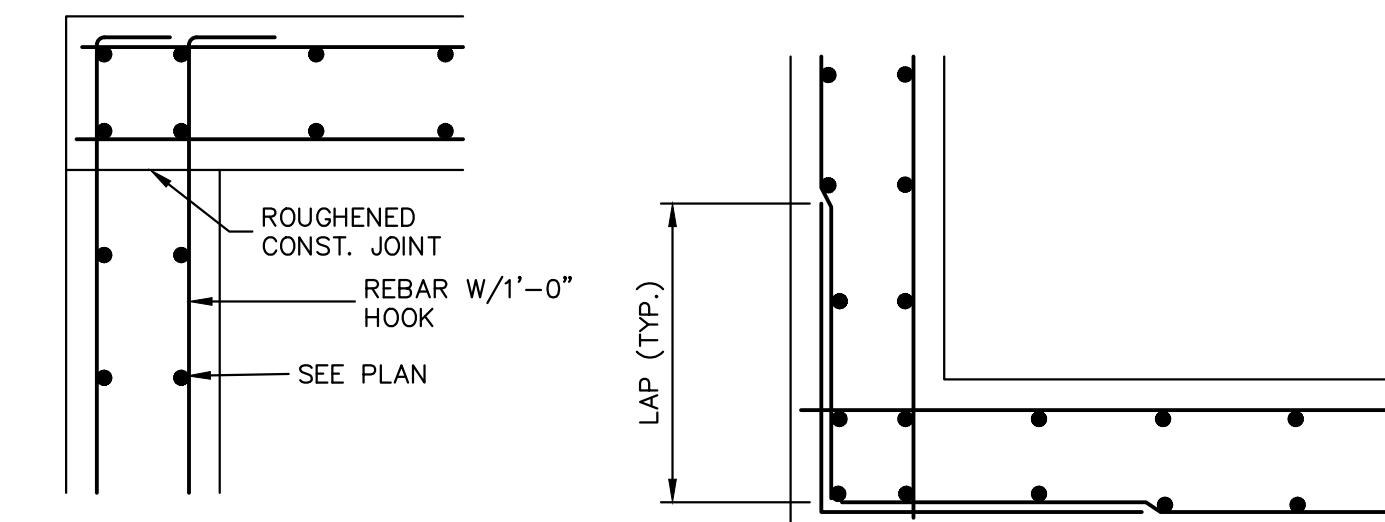
WHEN THE CONTRACTOR ELECTS TO SUBSTITUTE EPOXY COATED REINFORCEMENT FOR BLACK REINFORCING BARS. THE MINIMUM LAP SPICE SHALL BE AS DESCRIBED ABOVE.

STATIONS, ELEVATIONS, AND DIMENSIONS CONTAINED IN THESE PLANS ARE CALCULATED FROM A RECENT FIELD SURVEY. THE CONTRACTOR SHALL VERIFY ALL DEPENDENT DIMENSIONS IN THE FIELD BEFORE ORDERING OR FABRICATING ANY MATERIAL.

THE CONTRACTOR SHALL SUBMIT REINFORCING STEEL PLACING DRAWINGS (PRIOR TO CONSTRUCTION) TO THE ENGINEER FOR REVIEW FOR CONFORMANCE WITH THE DESIGN DRAWINGS. THE DESIGN DRAWINGS SHALL GOVERN OVER PLACING DRAWINGS IN ALL CASES UNLESS MODIFICATIONS ARE APPROVED IN WRITING BY ENGINEER.

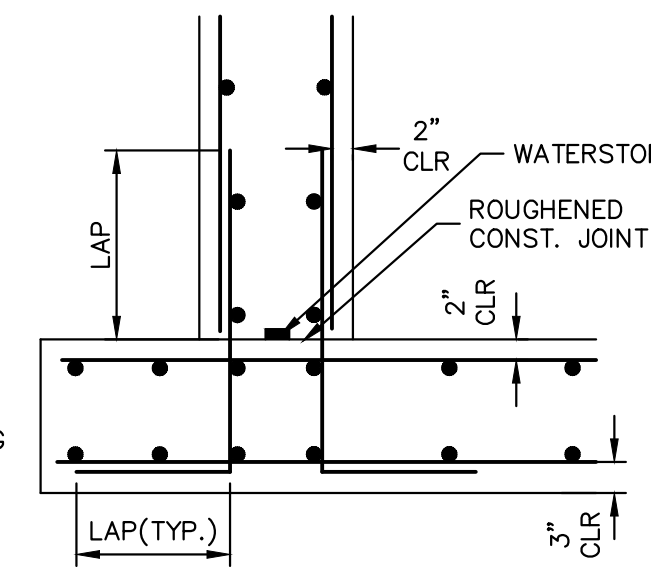
THE CONTRACTOR SHALL BE RESPONSIBLE FOR THE STABILITY OF THE STRUCTURE DURING CONSTRUCTION.

E.F. = EACH FACE	O.F. = OUTSIDE FACE
F.E. = FAR FACE	T.&B. = TOP AND BOTTOM
N.F. = NEAR FACE	T.F. = TOP FACE
I.F. = INSIDE FACE	B.F. = BOTTOM FACE
T.W. = TWO WAY	T.F. = TWO FACES
E.S. = EACH SIDE	Lp = LAP LENGTH

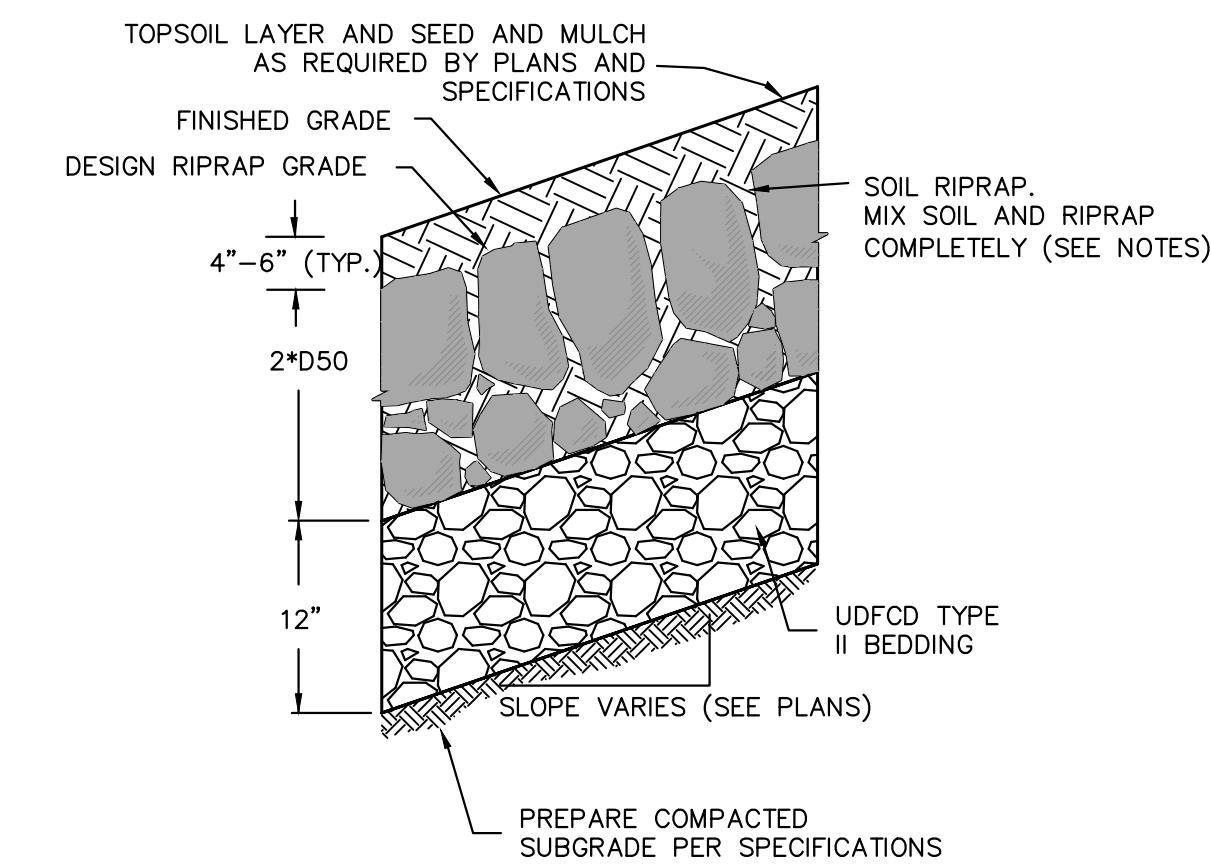


TYPICAL TOP CORNER WALL SECTION DETAIL

TYPICAL WALL CORNER PLAN VIEW



TYPICAL BOTTOM CORNER WALL SECTION DETAIL



SOIL RIPRAP EMBANKMENT PROTECTION WITH BEDDING TYP. SECTION
N.T.S.

TYPE VL RIPRAP

INTERMEDIATE ROCK DIMENSION (IN.)	PERCENT PASSING (%)
12	70-100
9	50-70
6	35-50
2	2-10

*TYPE VL RIPRAP D50=6".
D50 = MEAN PARTICLE SIZE (INTERMEDIATE DIMENSION) BY WEIGHT.

TYPE L RIPRAP

INTERMEDIATE ROCK DIMENSION (IN.)	PERCENT PASSING (%)
15	70-100
12	50-70
9	35-50
3	2-10

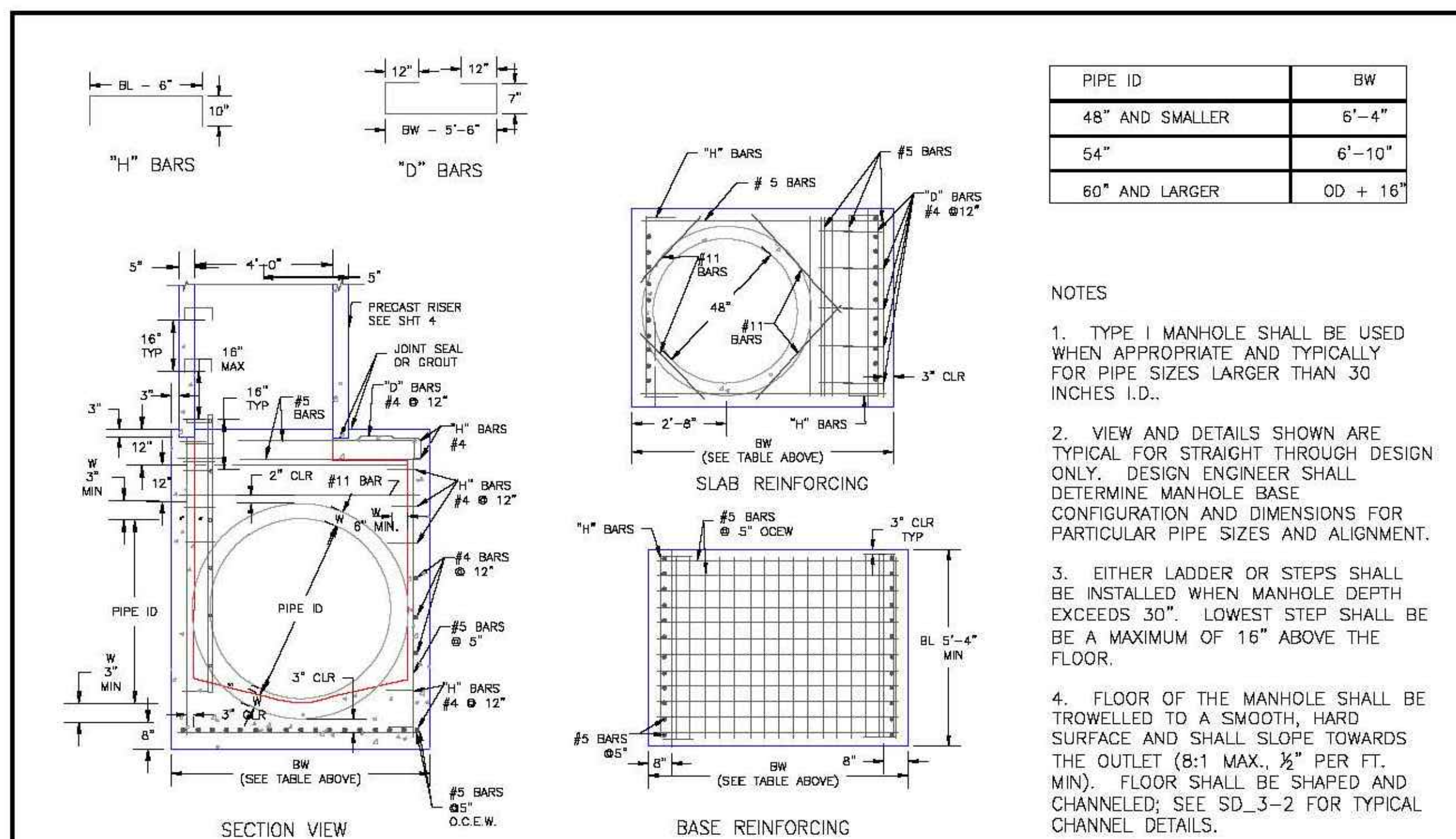
*TYPE L RIPRAP D50=9".
D50 = MEAN PARTICLE SIZE (INTERMEDIATE DIMENSION) BY WEIGHT.

RIPRAP NOTES:

- SOIL RIPRAP DETAILS ARE APPLICABLE TO SLOPED AREAS. REFER TO THE SITE PLAN ACTUAL LOCATION AND LIMITS.
- MIX UNIFORMLY 65% RIPRAP BY VOLUME WITH 35% OF APPROVED SOIL BY VOLUME PRIOR TO PLACEMENT.
- PLACE STONE-SOIL MIX TO RESULT IN SECURELY INTERLOCKED ROCK AT THE DESIGN THICKNESS AND GRADE. COMPACT AND LEVEL TO ELIMINATE ALL VOIDS AND ROCKS PROJECTING ABOVE DESIGN RIPRAP TOP GRADE.
- CRIMP OR TACKIFY MULCH OR USE APPROVED HYDROMULCH AS CALLED FOR IN THE PLANS AND SPECIFICATIONS.
- ROCK SHALL BE HARD, DURABLE, ANGULAR IN SHAPE, AND FREE FROM CRACKS, OVERBURDEN, SHALE, AND ORGANIC MATTER.
- NEITHER BREADTH NOR THICKNESS OF A SINGLE STONE SHOULD BE LESS THAN ONE-THIRD ITS LENGTH, AND ROUNDED STONE SHOULD BE AVOIDED.
- THE ROCK SHOULD SUSTAIN A LOSS OF NOT MORE THAN 40% AFTER 500 REVOLUTIONS IN AN ABRASION TEST (LOS ANGELES MACHINE ASTM C-535-69) AND SHOULD SUSTAIN A LOSS OF NOT MORE THAN 10% AFTER 12 CYCLES OF FREEZING AND THAWING (AASHTO TEST 103 FOR LEDGE ROCK PROCEDURE A).
- ROCK HAVING A MINIMUM SPECIFIC GRAVITY OF 2.65 IS PREFERRED; HOWEVER, IN NO CASE SHOULD ROCK HAVE A SPECIFIC GRAVITY LESS THAN 2.50.



Know what's below.
Call before you dig.



PIPE ID | **BW**

48" AND SMALLER	6'-4"
54"	6'-10"
60" AND LARGER	OD + 16"

NOTES

- TYPE I MANHOLE SHALL BE USED WHEN APPROPRIATE AND TYPICALLY FOR PIPE SIZES LARGER THAN 30 INCHES I.D..
- VIEW AND DETAILS SHOWN ARE TYPICAL FOR STRAIGHT THROUGH DESIGN ONLY. DESIGN ENGINEER SHALL DETERMINE MANHOLE BASE CONFIGURATION AND DIMENSIONS FOR PARTICULAR PIPE SIZES AND ALIGNMENT.
- EITHER LADDER OR STEPS SHALL BE INSTALLED WHEN MANHOLE DEPTH EXCEEDS 30". LOWEST STEP SHALL BE BE A MAXIMUM OF 16" ABOVE THE FLOOR.
- FLOOR OF THE MANHOLE SHALL BE TROWELLED TO A SMOOTH, HARD SURFACE AND SHALL SLOPE TOWARDS THE OUTLET (8:1 MAX., 1/2" PER FT. MIN). FLOOR SHALL BE SHAPED AND CHANNELLED; SEE SD_3-2 FOR TYPICAL CHANNEL DETAILS.

SCALE: NOT TO SCALE

DATE APPROVED: 7/9/09

Storm Sewer Manhole Detail
Type I
Standard Drawing

REVISION DATE: 7/9/09 | FILE NAME: SD_3-1

DEPARTMENT OF TRANSPORTATION

ENGINEER'S STATEMENT

THIS GRADING AND EROSION CONTROL PLAN WAS PREPARED UNDER MY DIRECTION AND SUPERVISION AND IS CORRECT TO THE BEST OF MY KNOWLEDGE AND BELIEF. SAID PLAN HAS BEEN PREPARED ACCORDING TO THE CRITERIA ESTABLISHED BY THE COUNTY FOR GRADING AND EROSION CONTROL PLANS. I ACCEPT RESPONSIBILITY FOR ANY LIABILITY CAUSED BY ANY NEGLIGENT ACTS, ERRORS OR OMISSIONS ON MY PART IN PREPARING THIS PLANS.

RYAN E. BURNS, P.E.
COLORADO P.E. 0054412
FOR AND ON BEHALF OF JR ENGINEERING

0054412
3/26/24

PREPARED FOR
BELKNAP VENTURES LLC
3603 FIRST LIGHT DRIVE
CASTLE ROCK, CO 80109
(719)-322-3556
SCOTT.BELKNAP@YAHOO.COM
ATTN: SCOTT BELKNAP

J.R. ENGINEERING
A Westman Company
Central 303-740-9888 • Colorado Springs 719-583-2583
Fort Collins 970-491-9888 • www.jrengineering.com

BY	DATE	NO.	REVISION

H-SCALE V-SCALE
DATE 01/15/24
DESIGNED BY APL
DRAWN BY APL
CHECKED BY

VOLLMER RV STORAGE
POND DETAILS

SHEET 10 OF 13
JOB NO. 25251.00

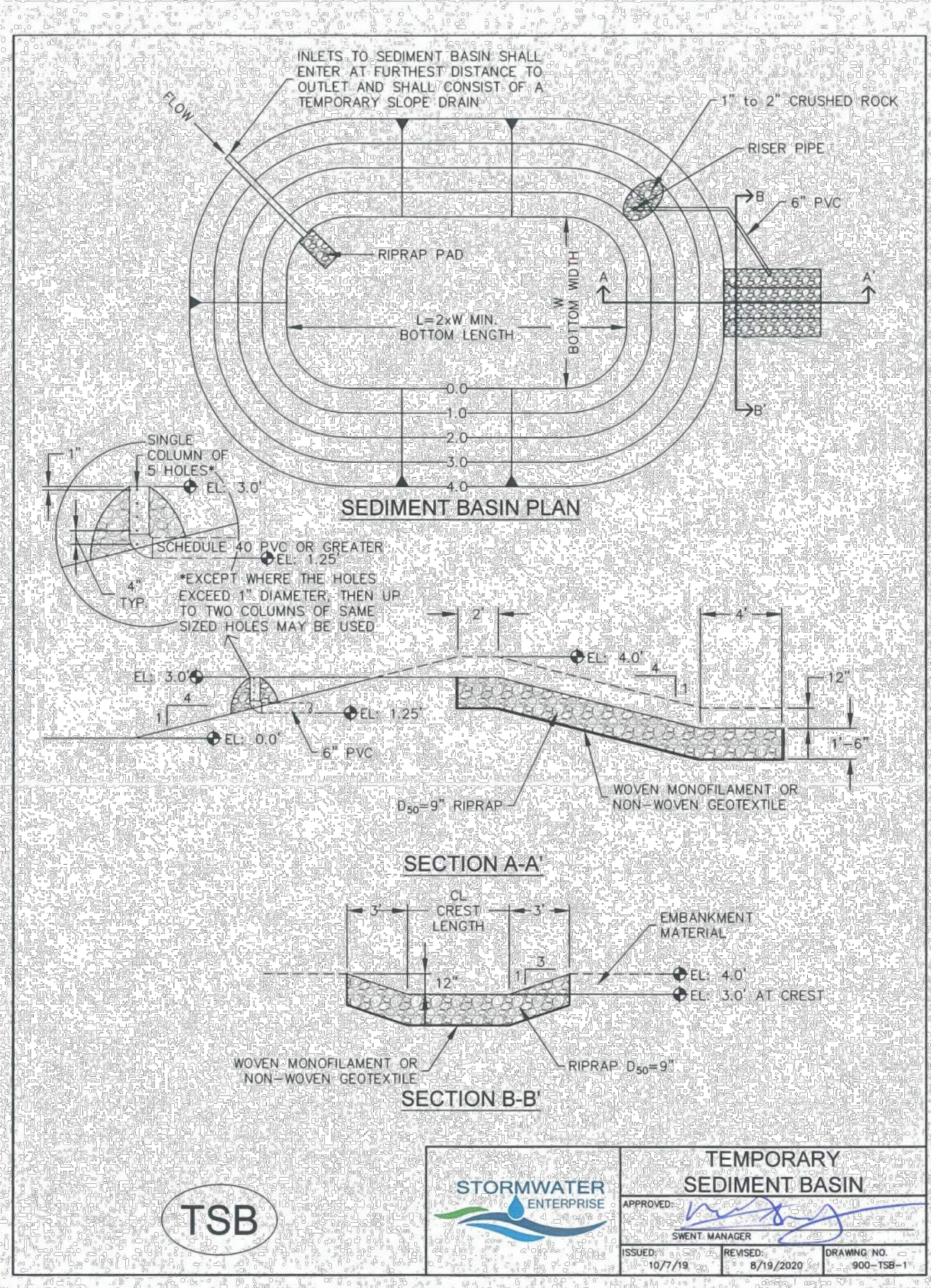
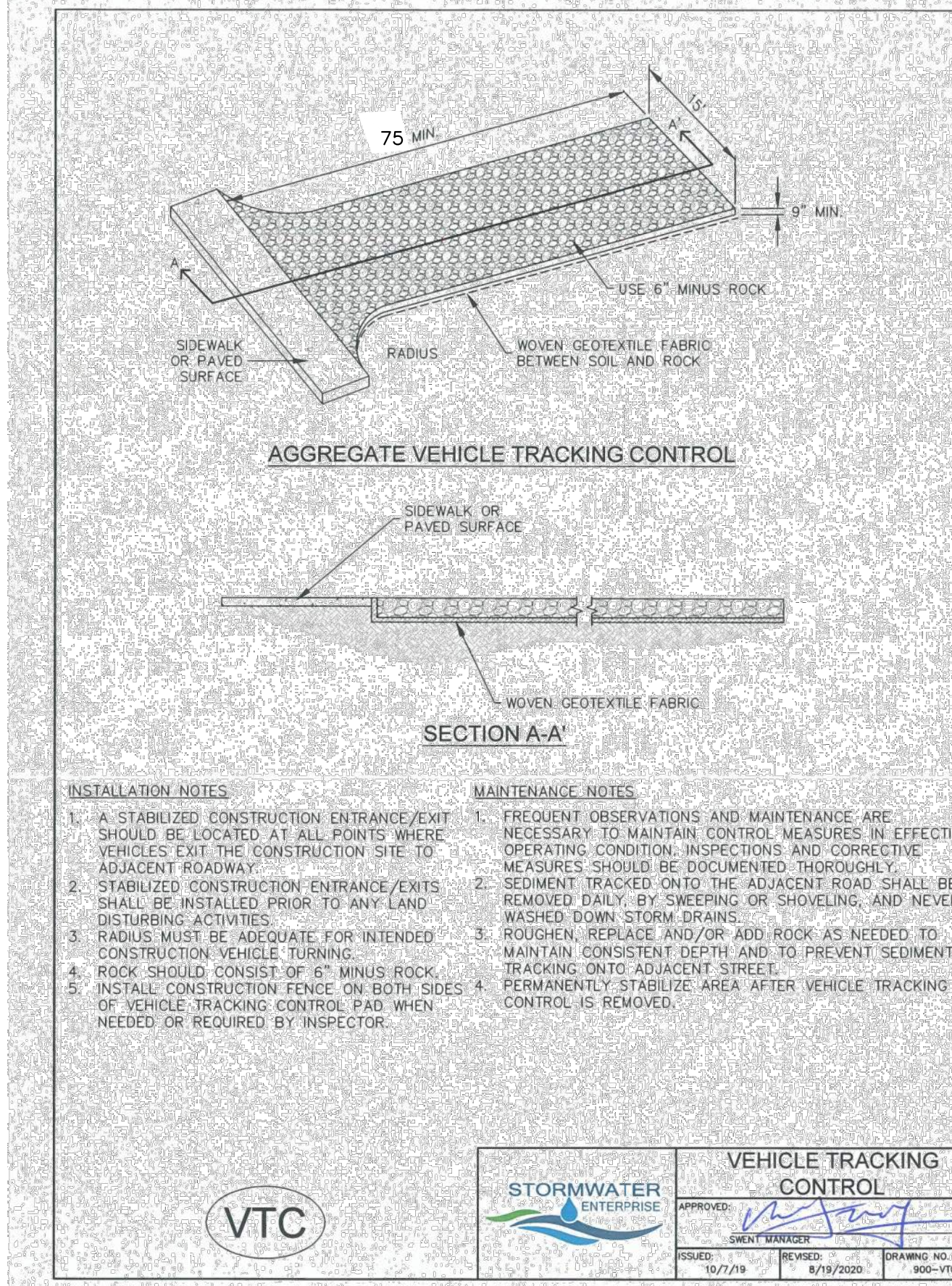
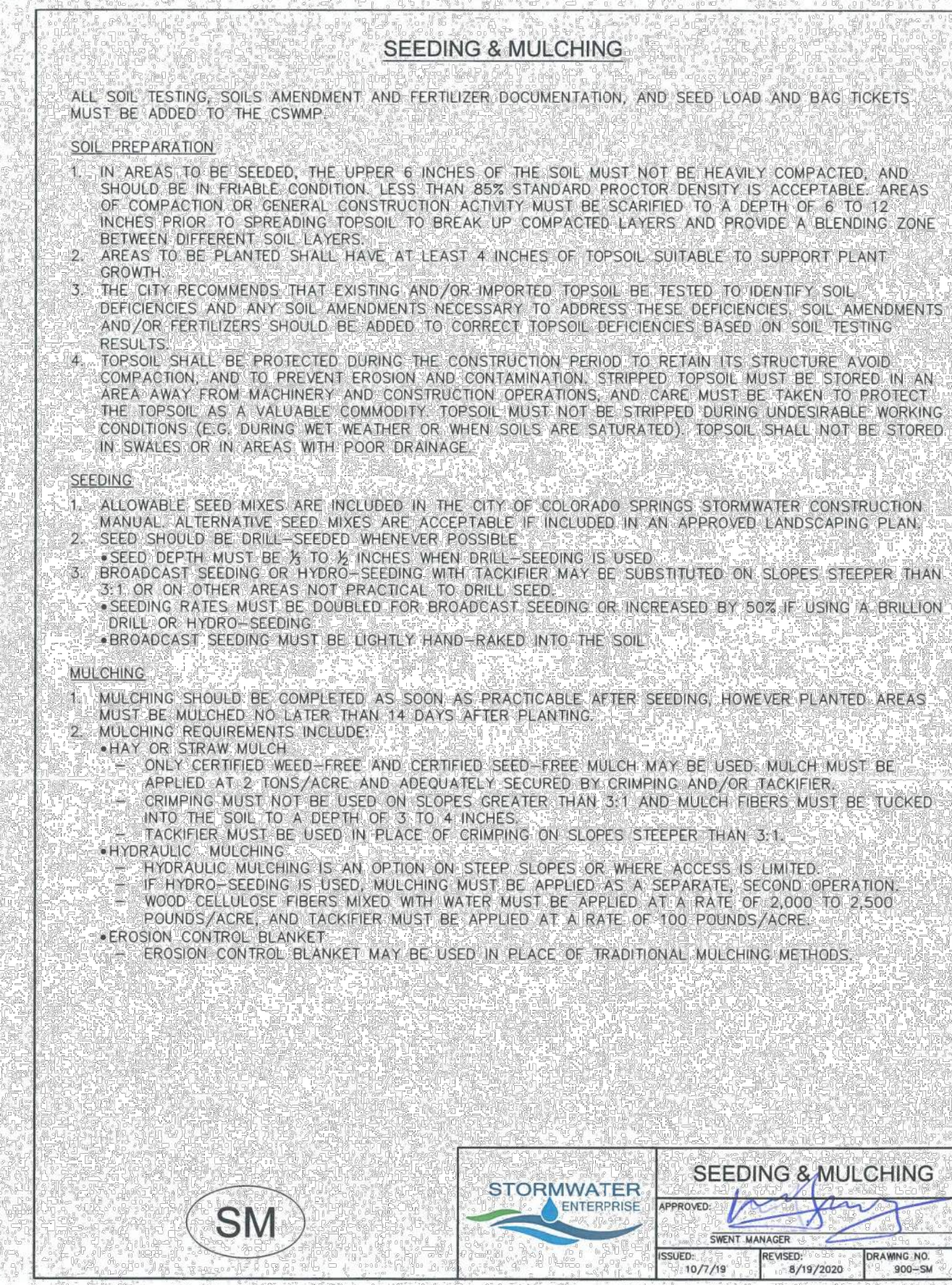
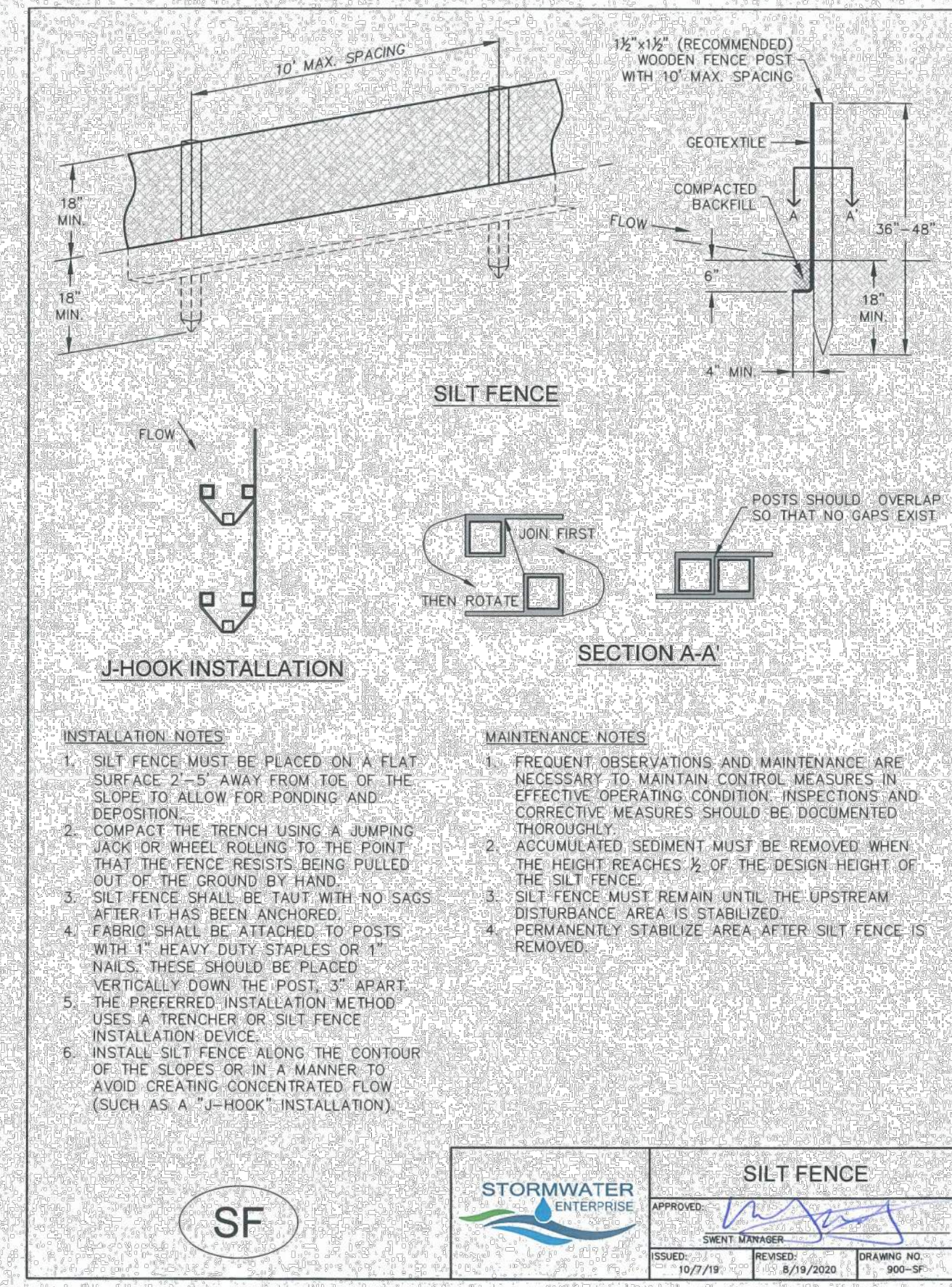
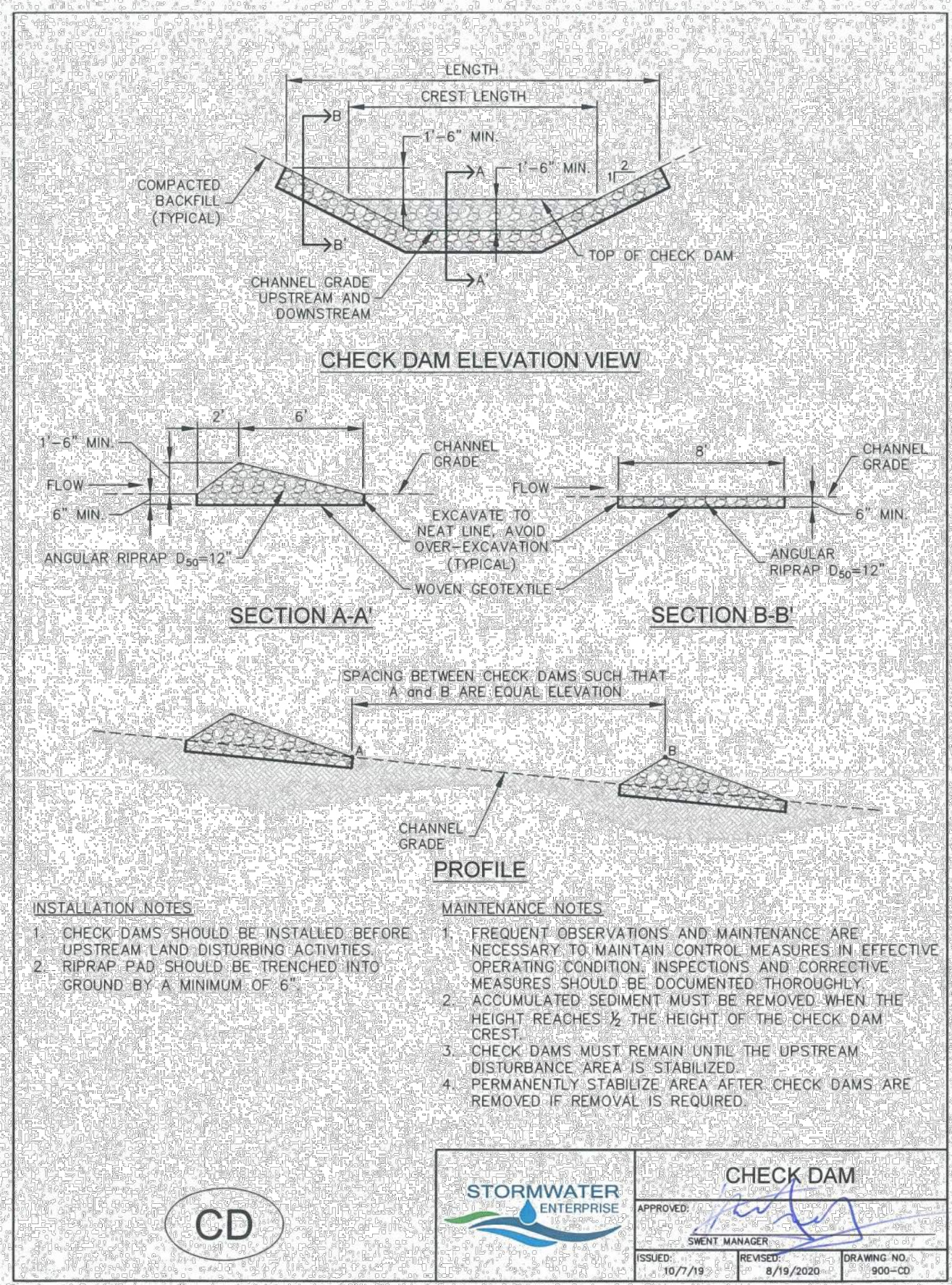


TABLE SB-1. SIZING INFORMATION FOR STANDARD SEDIMENT BASIN

UPSTREAM DRAINAGE AREA (ROUNDED TO NEAREST ACRE), (AC)	BASIN BOTTOM WIDTH (W), (FT)	SPILLWAY CREST LENGTH (CL), (FT)	HOLE DIAMETER (HD), (IN)
1	12 1/2	2	3 1/2
2	21	3	3 3/4
3	28	4	4
4	33 1/2	6	4 1/4
5	38 1/2	8	4 1/2
6	43	10	4 3/4
7	47 1/2	11	4 3/4
8	51	12	4 3/4
9	55	13	4 3/4
10	58 1/2	15	4 3/4
12	64	16	4 3/4
14	67 1/2	21	4 3/4
15	70 1/2	22	4 3/4

TSB

STORMWATER ENTERPRISE

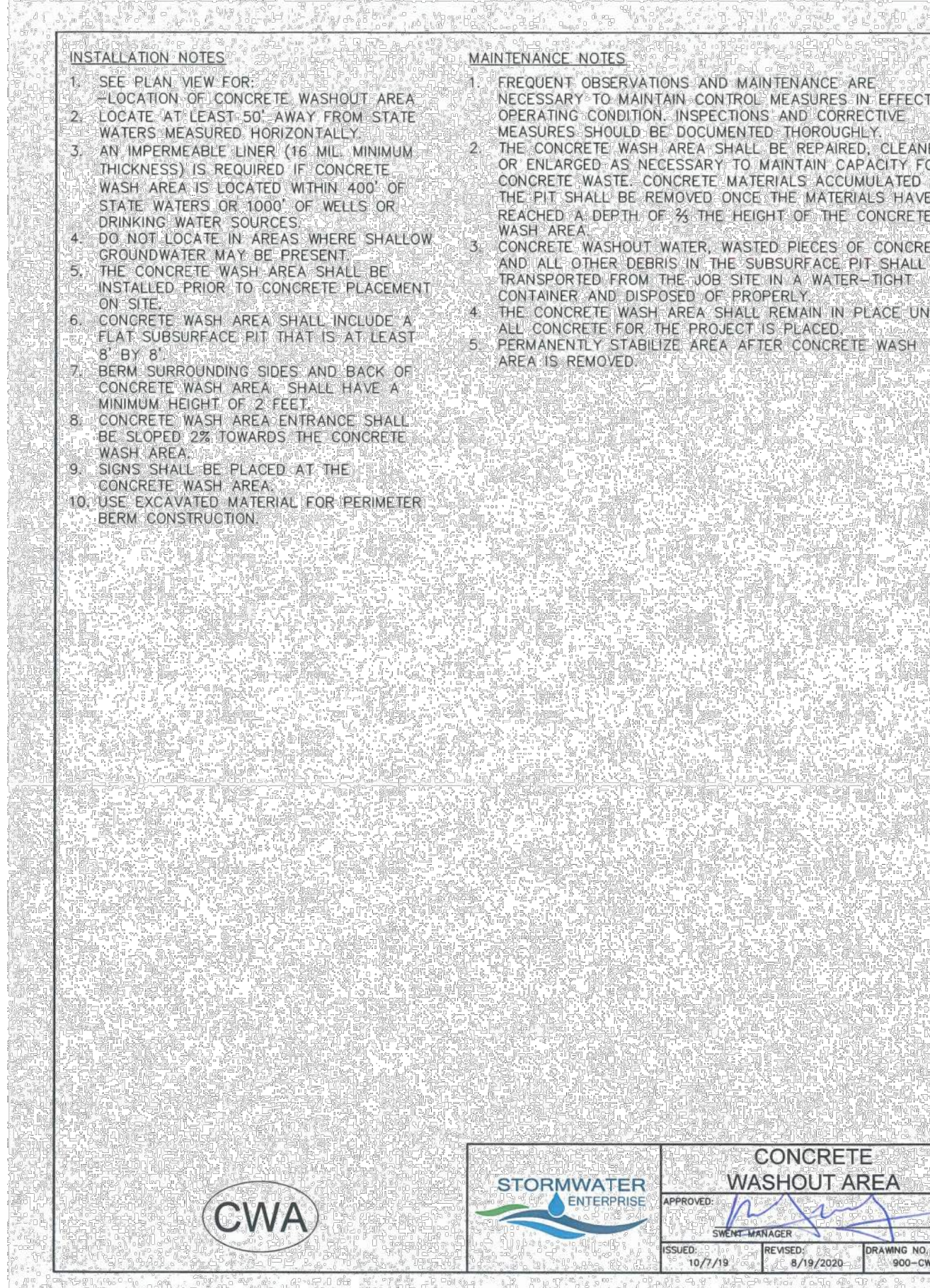
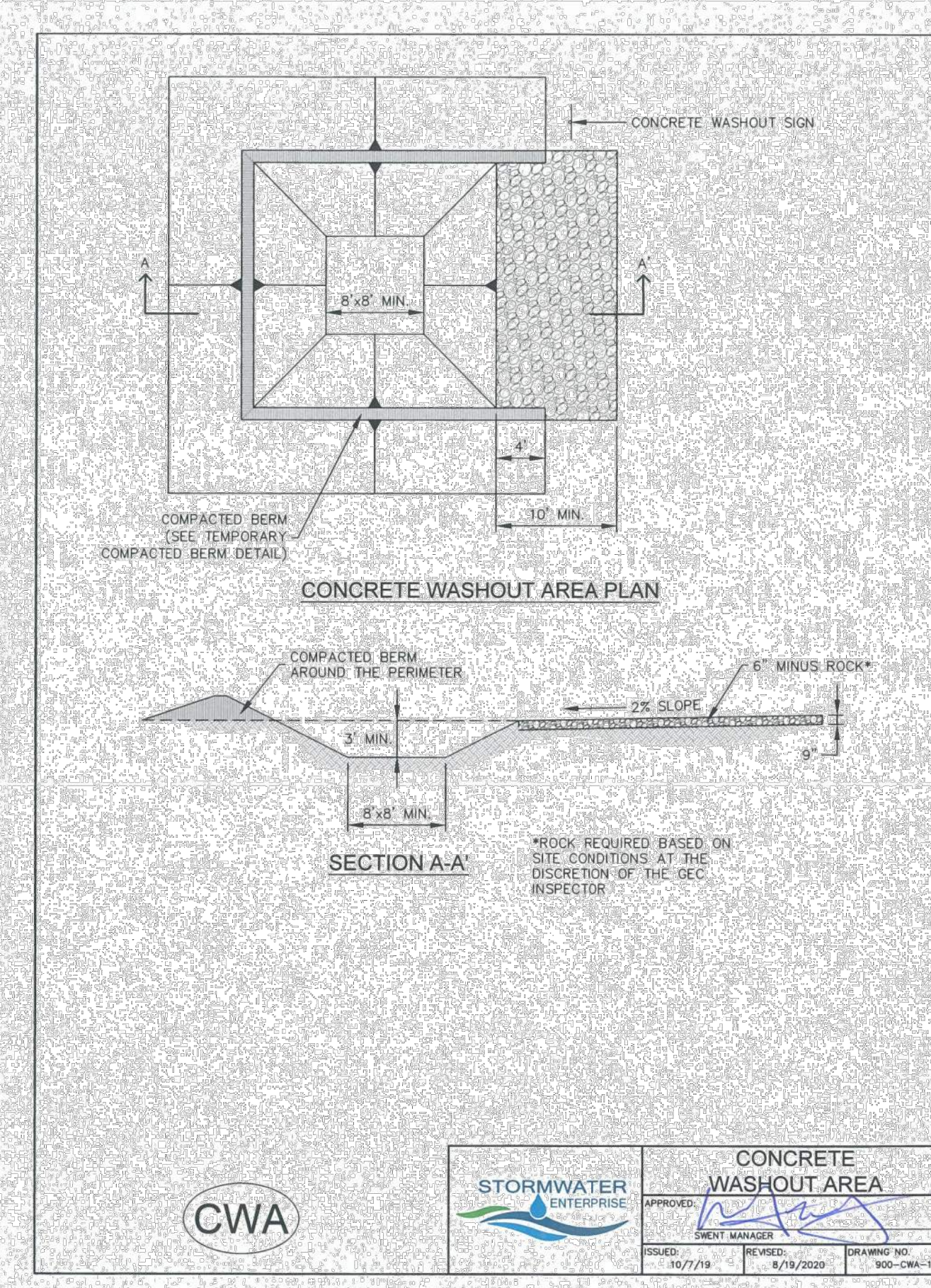
TEMPORARY SEDIMENT BASIN

APPROVED: [Signature]

DATE: 10/7/19

REVISION: 8/18/2020

DRAWING NO: 900-TSB-2



UNTIL SUCH TIME AS THESE DRAWINGS ARE APPROVED BY THE APPROPRIATE REVIEWING AGENCIES, OR ENGINEERING APPROVES THEIR USE, THESE DRAWINGS ARE DESIGNATED BY WRITTEN AUTHORIZATION.

PREPARED FOR
BELKNAP VENTURES LLC
 3603 FIRST LIGHT DRIVE
 CASTLE ROCK, CO 80109
 (719)-322-3556
 SCOTT.BELKNAP@YAHOO.COM
 ATTN: SCOTT BELKNAP

J.R. ENGINEERING
 A Westwin Company
 Centennial 300-740-8888 • Colorado Springs 719-588-2583
 Fort Collins 970-491-9888 • www.jrengineering.com

BY	DATE	No.	REVISION	H-SCALE	V-SCALE	DATE	DESIGNED BY	DRAWN BY	CHECKED BY	VOLLMER RV STORAGE	GEC DETAILS



ENGINEER'S STATEMENT

STANDARD DETAILS SHOWN WERE REVIEWED ONLY AS TO THEIR APPLICATION ON THIS PROJECT

[Signature]

0054412

3/26/24

RYAN E. BURNS, P.E.
 COLORADO P.E. 0054412
 FOR AND ON BEHALF OF JR ENGINEERING

