

VOLLMER RV STORAGE

SECTION 34, TOWNSHIP 12 SOUTH AND RANGE 65 WEST OF THE 6TH PRINCIPAL MERIDIAN

COUNTY OF EL PASO

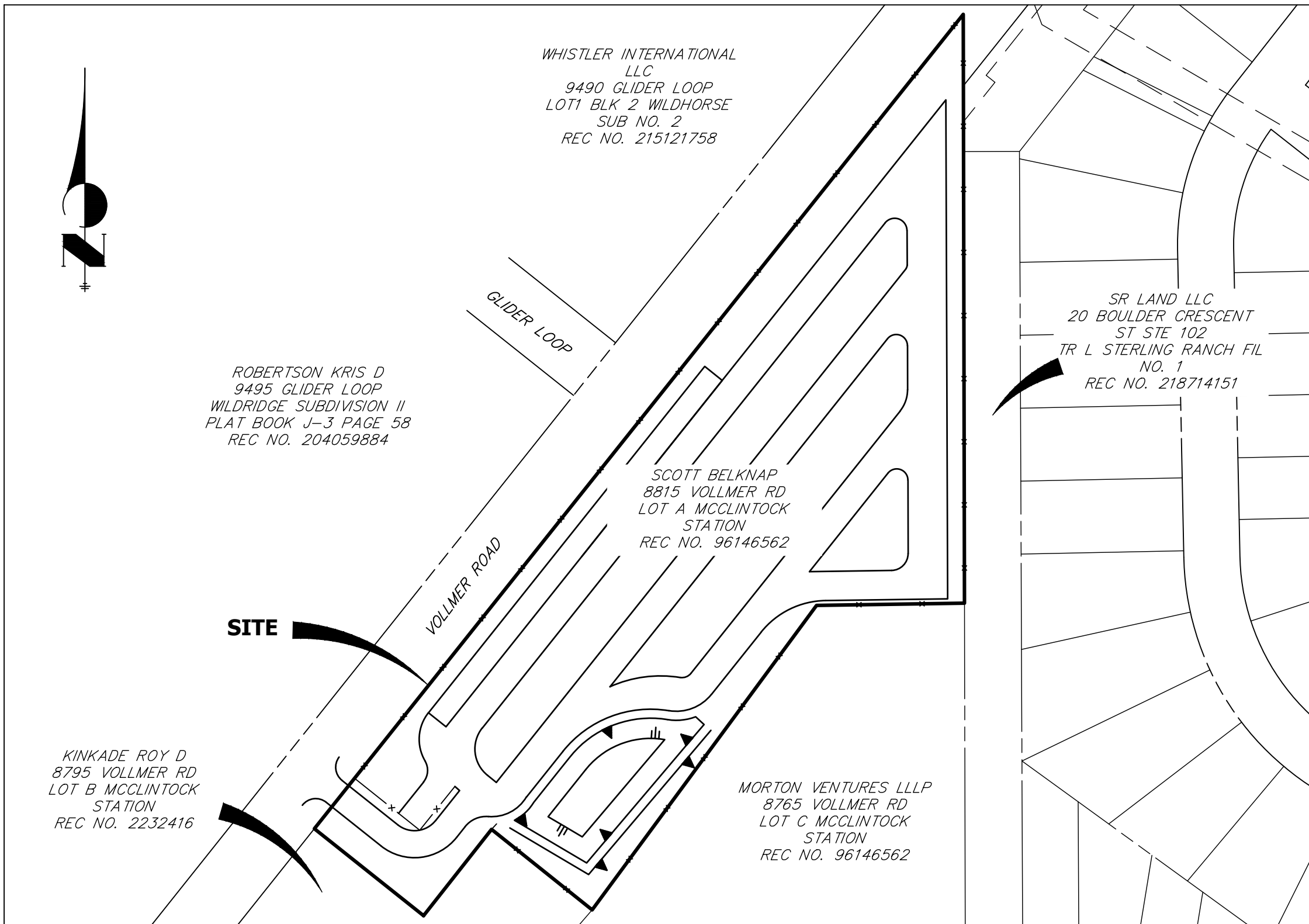
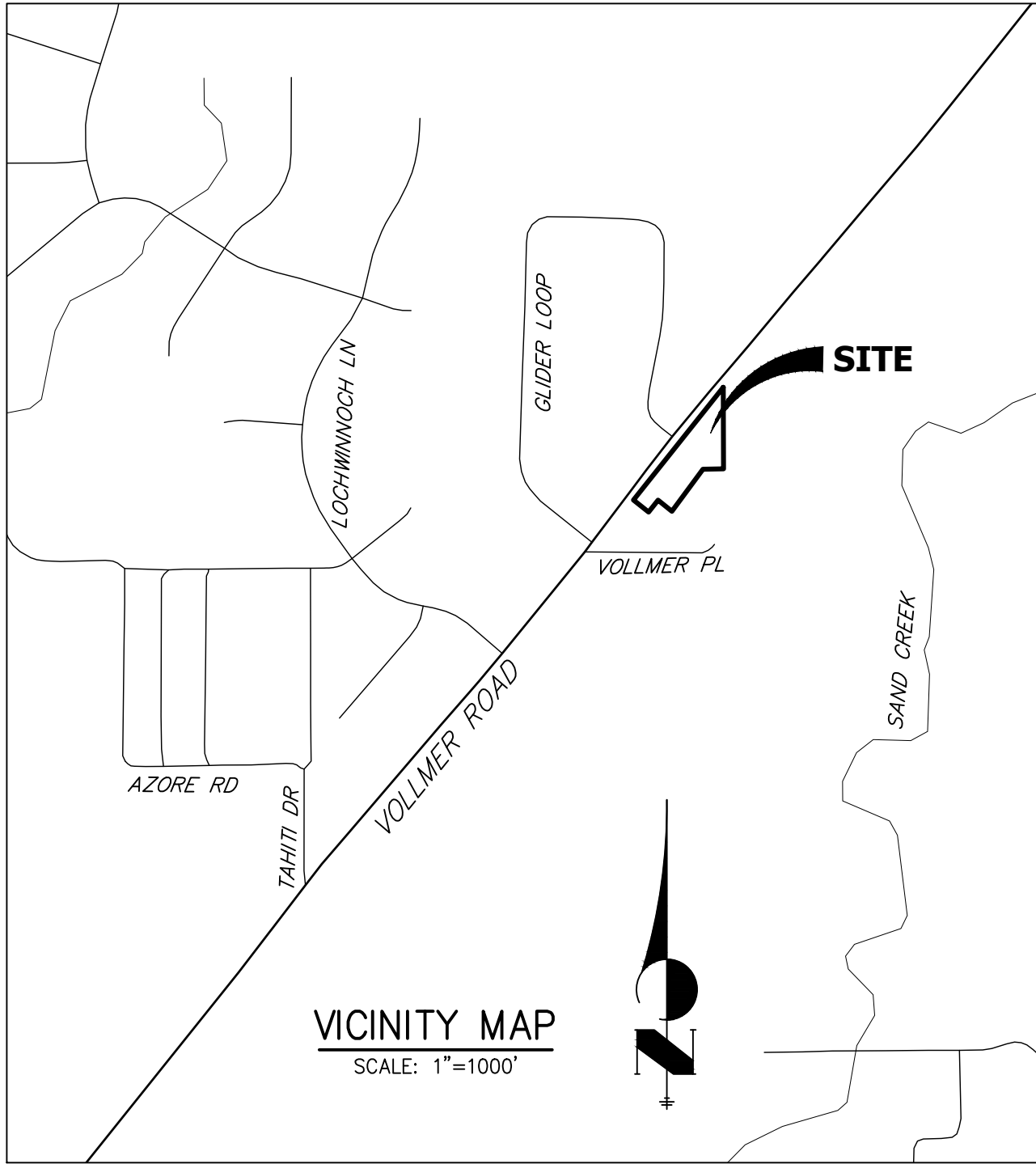
STATE OF COLORADO

GRADING AND EROSION CONTROL PLAN

GRADING AND EROSION CONTROL STANDARD NOTES

1. STORMWATER DISCHARGES FROM CONSTRUCTION SITES SHALL NOT CAUSE OR THREATEN TO CAUSE POLLUTION, CONTAMINATION, OR DEGRADATION OF STATE WATERS. ALL WORK AND EARTH DISTURBANCE SHALL BE DONE IN A MANNER THAT MINIMIZES POLLUTION OF ANY ON-SITE OR OFF-SITE WATERS, INCLUDING WETLANDS.
2. NOTWITHSTANDING ANYTHING DEPICTED IN THESE PLANS IN WORDS OR GRAPHIC REPRESENTATION, ALL DESIGN AND CONSTRUCTION RELATED TO ROADS, STORM DRAINAGE AND EROSION CONTROL SHALL CONFORM TO THE STANDARDS AND REQUIREMENTS OF THE MOST RECENT VERSION OF THE RELEVANT ADOPTED EL PASO COUNTY STANDARDS, INCLUDING THE LAND DEVELOPMENT CODE, THE ENGINEERING CRITERIA MANUAL, THE DRAINAGE CRITERIA MANUAL, AND THE DRAINAGE CRITERIA MANUAL VOLUME 2. ANY DEVIATIONS FROM REGULATIONS AND STANDARDS MUST BE REQUESTED, AND APPROVED, IN WRITING.
3. A SEPARATE STORMWATER MANAGEMENT PLAN (SWMP) FOR THIS PROJECT SHALL BE COMPLETED AND AN EROSION AND STORMWATER QUALITY CONTROL PERMIT (ESQCP) ISSUED PRIOR TO COMMENCING CONSTRUCTION. MANAGEMENT OF THE SWMP DURING CONSTRUCTION IS THE RESPONSIBILITY OF THE DESIGNATED QUALIFIED STORMWATER MANAGER OR CERTIFIED EROSION CONTROL INSPECTOR. THE SWMP SHALL BE LOCATED ON SITE AT ALL TIMES DURING CONSTRUCTION AND SHALL BE KEPT UP TO DATE WITH WORK PROGRESS AND CHANGES IN THE FIELD.
4. ONCE THE ESQCP IS APPROVED AND A "NOTICE TO PROCEED" HAS BEEN ISSUED, THE CONTRACTOR MAY INSTALL THE INITIAL STAGE EROSION AND SEDIMENT CONTROL MEASURES AS INDICATED ON THE APPROVED GEC. A PRECONSTRUCTION MEETING BETWEEN THE CONTRACTOR, ENGINEER, AND EL PASO COUNTY WILL BE HELD PRIOR TO ANY CONSTRUCTION. IT IS THE RESPONSIBILITY OF THE APPLICANT TO COORDINATE THE MEETING TIME AND PLACE WITH COUNTY STAFF.
5. CONTROL MEASURES MUST BE INSTALLED PRIOR TO COMMENCEMENT OF ACTIVITIES THAT COULD CONTRIBUTE POLLUTANTS TO STORMWATER. CONTROL MEASURES FOR ALL SLOPES, CHANNELS, DITCHES, AND DISTURBED LAND AREAS SHALL BE INSTALLED IMMEDIATELY UPON COMPLETION OF THE DISTURBANCE.
6. ALL TEMPORARY SEDIMENT AND EROSION CONTROL MEASURES SHALL BE MAINTAINED AND REMAIN IN EFFECTIVE OPERATING CONDITION UNTIL PERMANENT SOIL EROSION CONTROL MEASURES ARE IMPLEMENTED AND FINAL STABILIZATION IS ESTABLISHED. ALL PERSONS ENGAGED IN LAND DISTURBANCE ACTIVITIES SHALL ASSESS THE ADEQUACY OF CONTROL MEASURES AT THE SITE AND IDENTIFY IF CHANGES TO THOSE CONTROL MEASURES ARE NEEDED TO ENSURE THE CONTINUED EFFECTIVE PERFORMANCE OF THE CONTROL MEASURES. ALL CHANGES TO TEMPORARY SEDIMENT AND EROSION CONTROL MEASURES MUST BE INCORPORATED INTO THE STORMWATER MANAGEMENT PLAN.
7. TEMPORARY STABILIZATION SHALL BE IMPLEMENTED ON DISTURBED AREAS AND STOCKPILES WHERE GROUND DISTURBING CONSTRUCTION ACTIVITY HAS PERMANENTLY CEASED OR TEMPORARILY CEASED FOR LONGER THAN 14 DAYS.
8. FINAL STABILIZATION MUST BE IMPLEMENTED AT ALL APPLICABLE CONSTRUCTION SITES. FINAL STABILIZATION IS ACHIEVED WHEN ALL GROUND DISTURBING ACTIVITIES ARE COMPLETE AND ALL DISTURBED AREAS EITHER HAVE A UNIFORM VEGETATIVE COVER WITH INDIVIDUAL PLANT DENSITY OF 70 PERCENT OF PRE-DISTURBANCE LEVELS ESTABLISHED OR EQUIVALENT PERMANENT ALTERNATIVE STABILIZATION METHOD IS IMPLEMENTED. ALL TEMPORARY SEDIMENT AND EROSION CONTROL MEASURES SHALL BE REMOVED UPON FINAL STABILIZATION AND BEFORE PERMIT CLOSURE.
9. ALL PERMANENT STORMWATER MANAGEMENT FACILITIES SHALL BE INSTALLED AS DESIGNED IN THE APPROVED PLANS. ANY PROPOSED CHANGES THAT AFFECT THE DESIGN OR FUNCTION OF PERMANENT STORMWATER MANAGEMENT STRUCTURES MUST BE APPROVED BY THE ECM ADMINISTRATOR PRIOR TO IMPLEMENTATION.
10. EARTH DISTURBANCES SHALL BE CONDUCTED IN SUCH A MANNER SO AS TO EFFECTIVELY MINIMIZE ACCELERATED SOIL EROSION AND RESULTING SEDIMENTATION. ALL DISTURBANCES SHALL BE DESIGNED, CONSTRUCTED, AND COMPLETED SO THAT THE EXPOSED AREA OF ANY DISTURBED LAND SHALL BE LIMITED TO THE SHORTEST PRACTICAL PERIOD OF TIME. PRE-EXISTING VEGETATION SHALL BE PROTECTED AND MAINTAINED WITHIN 50 HORIZONTAL FEET OF A WATERS OF THE STATE UNLESS SHOWN TO BE INFEASIBLE AND SPECIFICALLY REQUESTED AND APPROVED.
11. COMPACTION OF SOIL MUST BE PREVENTED IN AREAS DESIGNATED FOR INFILTRATION CONTROL MEASURES OR WHERE FINAL STABILIZATION WILL BE ACHIEVED BY VEGETATIVE COVER. AREAS DESIGNATED FOR INFILTRATION CONTROL MEASURES SHALL ALSO BE PROTECTED FROM SEDIMENTATION DURING CONSTRUCTION UNTIL FINAL STABILIZATION IS ACHIEVED. IF COMPACTION PREVENTION IS NOT FEASIBLE DUE TO SITE CONSTRAINTS, ALL AREAS DESIGNATED FOR INFILTRATION AND VEGETATION CONTROL MEASURES MUST BE LOOSENEED PRIOR TO INSTALLATION OF THE CONTROL MEASURE(S).
12. ANY TEMPORARY OR PERMANENT FACILITY DESIGNED AND CONSTRUCTED FOR THE CONVEYANCE OF STORMWATER AROUND, THROUGH, OR FROM THE EARTH DISTURBANCE AREA SHALL BE A STABILIZED CONVEYANCE DESIGNED TO MINIMIZE EROSION AND THE DISCHARGE OF SEDIMENT OFF SITE.
13. CONCRETE WASH WATER SHALL BE CONTAINED AND DISPOSED OF IN ACCORDANCE WITH THE SWMP. NO WASH WATER SHALL BE DISCHARGED TO OR ALLOWED TO ENTER STATE WATERS, INCLUDING ANY SURFACE OR SUBSURFACE STORM DRAINAGE SYSTEM OR FACILITIES. CONCRETE WASHOUTS SHALL NOT BE LOCATED IN AN AREA WHERE SHALLOW GROUNDWATER MAY BE PRESENT, OR WITHIN 50 FEET OF A SURFACE WATER BODY, CREEK OR STREAM.
14. DURING DEWATERING OPERATIONS OF UNCONTAMINATED GROUND WATER MAY BE DISCHARGED ON SITE, BUT SHALL NOT LEAVE THE SITE IN THE FORM OF SURFACE RUNOFF UNLESS AN APPROVED STATE DEWATERING PERMIT IS IN PLACE.
15. EROSION CONTROL BLANKETING OR OTHER PROTECTIVE COVERING SHALL BE USED ON SLOPES STEEPER THAN 3:1.
16. CONTRACTOR SHALL BE RESPONSIBLE FOR THE REMOVAL OF ALL WASTES FROM THE CONSTRUCTION SITE FOR DISPOSAL IN ACCORDANCE WITH LOCAL AND STATE REGULATORY REQUIREMENTS. NO CONSTRUCTION DEBRIS, TREE SLASH, BUILDING MATERIAL WASTES OR UNUSED BUILDING MATERIALS SHALL BE BURIED, DUMPED, OR DISCHARGED AT THE SITE.
17. WASTE MATERIALS SHALL NOT BE TEMPORARILY PLACED OR STORED IN THE STREET, ALLEY, OR OTHER PUBLIC WAY, UNLESS IN ACCORDANCE WITH AN APPROVED TRAFFIC CONTROL PLAN. CONTROL MEASURES MAY BE REQUIRED BY EL PASO COUNTY ENGINEERING IF DEEMED NECESSARY, BASED ON SPECIFIC CONDITIONS AND CIRCUMSTANCES.
18. TRACKING OF SOILS AND CONSTRUCTION DEBRIS OFF-SITE SHALL BE MINIMIZED. MATERIALS TRACKED OFF-SITE SHALL BE CLEANED UP AND PROPERLY DISPOSED OF IMMEDIATELY.
19. THE OWNER/DEVELOPER SHALL BE RESPONSIBLE FOR THE REMOVAL OF ALL CONSTRUCTION DEBRIS, DIRT, TRASH, ROCK, SEDIMENT, SOIL, AND SAND THAT MAY ACCUMULATE IN ROADS, STORM DRAINS AND OTHER DRAINAGE CONVEYANCE SYSTEMS AND STORMWATER APPURTENANCES AS A RESULT OF SITE DEVELOPMENT.
20. THE QUANTITY OF MATERIALS STORED ON THE PROJECT SITE SHALL BE LIMITED, AS MUCH AS PRACTICAL, TO THAT QUANTITY REQUIRED TO PERFORM THE WORK IN AN ORDERLY SEQUENCE. ALL MATERIALS STORED ON-SITE SHALL BE STORED IN A NEAT, ORDERLY MANNER, IN THEIR ORIGINAL CONTAINERS, WITH ORIGINAL MANUFACTURER'S LABELS.
21. NO CHEMICAL(S) HAVING THE POTENTIAL TO BE RELEASED IN STORMWATER ARE TO BE STORED OR USED ONSITE UNLESS PERMISSION FOR THE USE OF SUCH CHEMICAL(S) IS GRANTED IN WRITING BY THE ECM ADMINISTRATOR. IN GRANTING APPROVAL FOR THE USE OF SUCH CHEMICAL(S), SPECIAL CONDITIONS AND MONITORING MAY BE REQUIRED.
22. BULK STORAGE OF ALLOWED PETROLEUM PRODUCTS OR OTHER ALLOWED LIQUID CHEMICALS IN EXCESS OF 55 GALLONS SHALL REQUIRE ADEQUATE SECONDARY CONTAINMENT PROTECTION TO CONTAIN ALL SPILLS ONSITE AND TO PREVENT ANY SPILLED MATERIALS FROM ENTERING STATE WATERS, ANY SURFACE OR SUBSURFACE STORM DRAINAGE SYSTEM OR OTHER FACILITIES.
23. NO PERSON SHALL CAUSE THE IMPEDIMENT OF STORMWATER FLOW IN THE CURB AND GUTTER OR DITCH EXCEPT WITH APPROVED SEDIMENT CONTROL MEASURES.
24. OWNER/DEVELOPER AND THEIR AGENTS SHALL COMPLY WITH THE "COLORADO WATER QUALITY CONTROL ACT" (TITLE 25, ARTICLE 8, CRS), AND THE "CLEAN WATER ACT" (33 USC 1344), IN ADDITION TO THE REQUIREMENTS OF THE LAND DEVELOPMENT CODE, DCM VOLUME II AND THE ECM APPENDIX I. ALL APPROPRIATE PERMITS MUST BE OBTAINED BY THE CONTRACTOR PRIOR TO CONSTRUCTION (1041, NPDES, FLOODPLAIN, 404, FUGITIVE DUST, ETC.). IN THE EVENT OF CONFLICTS BETWEEN THESE REQUIREMENTS AND OTHER LAWS, RULES, OR REGULATIONS OF OTHER FEDERAL, STATE, LOCAL, OR COUNTY AGENCIES, THE MOST RESTRICTIVE LAWS, RULES, OR REGULATIONS SHALL APPLY.
25. ALL CONSTRUCTION TRAFFIC MUST ENTER/EXIT THE SITE ONLY AT APPROVED CONSTRUCTION ACCESS POINTS.
26. PRIOR TO CONSTRUCTION THE PERMITTEE SHALL VERIFY THE LOCATION OF EXISTING UTILITIES.
27. A WATER SOURCE SHALL BE AVAILABLE ON SITE DURING EARTHWORK OPERATIONS AND SHALL BE UTILIZED AS REQUIRED TO MINIMIZE DUST FROM EARTHWORK EQUIPMENT AND WIND.
28. THE SOILS REPORT FOR THIS SITE HAS BEEN PREPARED BY NRCS SOIL SURVEY AND SHALL BE CONSIDERED A PART OF THESE PLANS.
29. AT LEAST TEN (10) DAYS PRIOR TO THE ANTICIPATED START OF CONSTRUCTION, FOR PROJECTS THAT WILL DISTURB ONE (1) ACRE OR MORE, THE OWNER OR OPERATOR OF CONSTRUCTION ACTIVITY SHALL SUBMIT A PERMIT APPLICATION FOR STORMWATER DISCHARGE TO THE COLORADO DEPARTMENT OF PUBLIC HEALTH AND ENVIRONMENT, WATER QUALITY DIVISION. THE APPLICATION CONTAINS CERTIFICATION OF COMPLETION OF A STORMWATER MANAGEMENT PLAN (SWMP), OF WHICH THIS GRADING AND EROSION CONTROL PLAN MAY BE A PART. FOR INFORMATION OR APPLICATION MATERIALS CONTACT:

COLORADO DEPARTMENT OF PUBLIC HEALTH AND ENVIRONMENT
WATER QUALITY CONTROL DIVISION
WQCD - PERMITS
4300 CHERRY CREEK DRIVE SOUTH
DENVER, CO 80246-1530
ATTN: PERMITS UNIT



SITE MAP

SCALE: 1"=100'

OWNER/DEVELOPER STATEMENT

I, THE OWNER/DEVELOPER HAVE READ AND WILL COMPLY WITH THE REQUIREMENT OF THE GRADING AND EROSION CONTROL PLANS.

SCOTT BELKNAP

DATE

3603 FIRST LIGHT DRIVE
CASTLE ROCK, CO 80109

CONTACTS:

OWNER/DEVELOPER

ATTN: SCOTT BELKNAP
3603 FIRST LIGHT DRIVE
CASTLE ROCK, CO 80109
P~(719) 322-3556

ENGINEER/SURVEYOR

JR ENGINEERING LLC
ATTN: RYAN E. BURNS
5475 TECH CENTER DRIVE, SUITE 235
COLORADO SPRINGS, CO 80919
P~(303) 267-6178

ELECTRIC DEPARTMENT

MOUNTAIN VIEW ELECTRIC
11140 E. WOODMAN ROAD
FALCON, CO 80831
(719) 495-2283

SHEET INDEX:

- 1 : COVER SHEET
- 2 : LEGEND
- 3 : EROSION CONTROL PLAN
- 4-5: POND DETAILS
- 6-7: GEC DETAILS

Provide a copy of the soils report for reference.

PCD File No. PPR-22-045

EL PASO COUNTY STATEMENT

COUNTY PLAN REVIEW IS PROVIDED ONLY FOR GENERAL CONFORMANCE WITH COUNTY DESIGN CRITERIA. THE COUNTY IS NOT RESPONSIBLE FOR THE ACCURACY AND ADEQUACY OF THE DESIGN, DIMENSIONS, AND/OR ELEVATIONS WHICH SHALL BE CONFIRMED AT THE JOB SITE. THE COUNTY THROUGH THE APPROVAL OF THIS DOCUMENT ASSUMES NO RESPONSIBILITY FOR COMPLETENESS AND/OR ACCURACY OF THIS DOCUMENT.

FILED IN ACCORDANCE WITH THE REQUIREMENTS OF THE EL PASO COUNTY LAND DEVELOPMENT CODE, DRAINAGE CRITERIA MANUAL VOLUMES 1 AND 2, AND ENGINEERING CRITERIA MANUAL AS AMENDED.

IN ACCORDANCE WITH ECM SECTION 1.12, THESE CONSTRUCTION DOCUMENTS WILL BE VALID FOR CONSTRUCTION FOR A PERIOD OF 2 YEARS FROM THE DATE SIGNED BY THE EL PASO COUNTY ENGINEER. IF CONSTRUCTION HAS NOT STARTED WITHIN THOSE 2 YEARS, THE PLANS WILL NEED TO BE RESUBMITTED FOR APPROVAL, INCLUDING PAYMENT OF REVIEW FEES AT THE PLANNING AND COMMUNITY DEVELOPMENT DIRECTOR'S DISCRETION.

JENNIFER IRVINE, P.E.

DATE

COUNTY ENGINEER/ECM ADMINISTRATOR

ENGINEER'S STATEMENT

THIS GRADING AND EROSION CONTROL PLAN WAS PREPARED UNDER MY DIRECTION AND SUPERVISION AND IS CORRECT TO THE BEST OF MY KNOWLEDGE AND BELIEF. SAID PLAN HAS BEEN PREPARED ACCORDING TO THE CRITERIA ESTABLISHED BY THE COUNTY FOR GRADING AND EROSION CONTROL PLANS. I ACCEPT RESPONSIBILITY FOR ANY LIABILITY CAUSED BY ANY NEGLIGENT ACTS, ERRORS OR OMISSIONS ON MY PART IN PREPARING THIS PLANS.

The PE seal will need to be on every sheet, but not here in the engineering statement

SIGNATURE

PRINTED NAME

DATE

0054412

SEAL

VOLLMER RV STORAGE

COVER SHEET

SHEET 1 OF 7

JOB NO. 25251.00



Know what's below.
Call before you dig.

PREPARED FOR

SCOTT BELKNAP

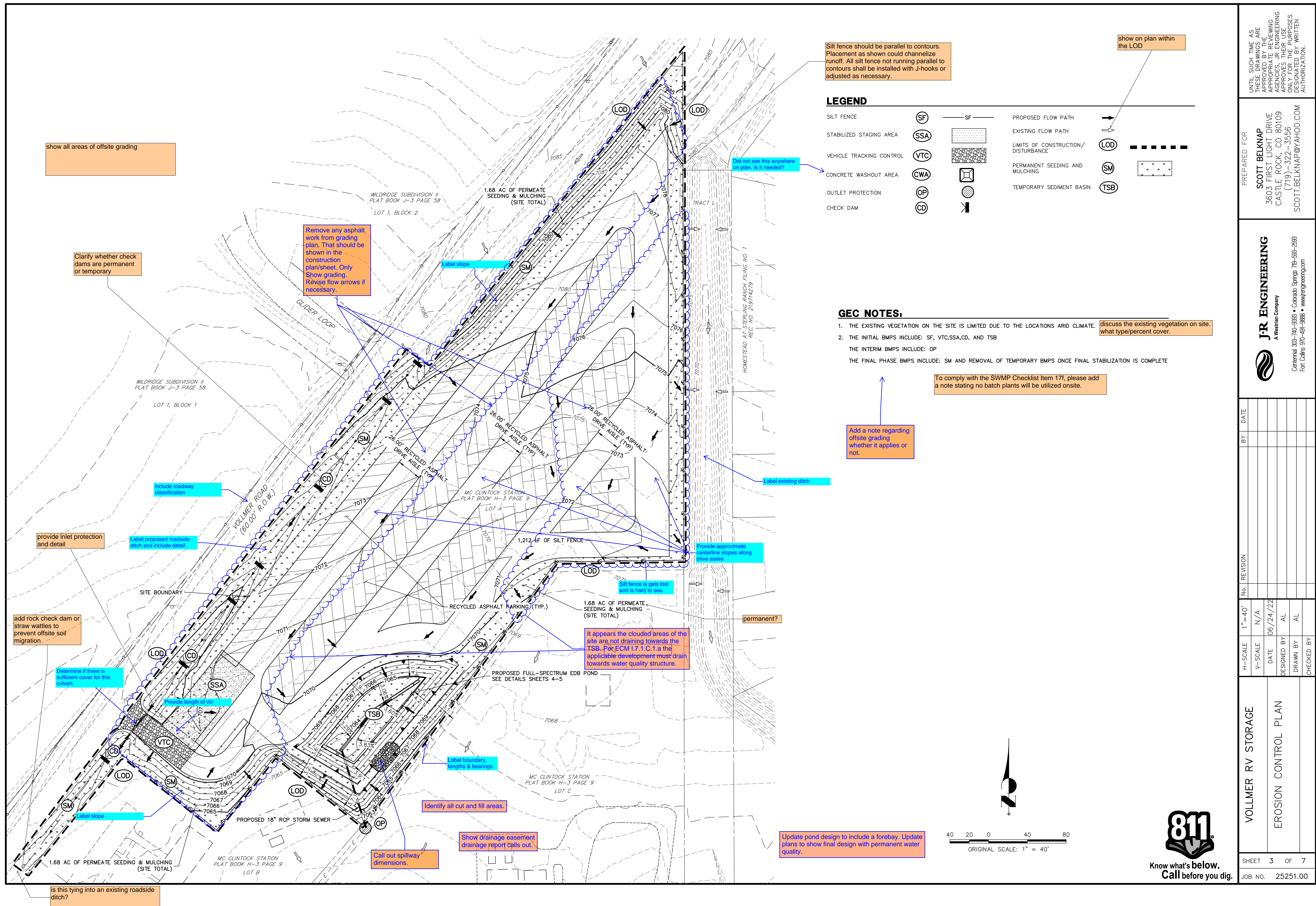
3603 FIRST LIGHT DRIVE
CASTLE ROCK, CO 80109
(719) 322-3556
SCOTT.BELKNAP@YAHOO.COM

J.R. ENGINEERING
A Westman Company



Centennial 303-740-9888 • Colorado Springs 719-583-2583
Fort Collins 970-491-9888 • www.jrengineering.com

UNTIL SUCH TIME AS THESE DRAWINGS ARE APPROVED BY THE APPROPRIATE REVIEWING AGENCIES, OR ENGINEERING APPROVES THEIR USE, THEY ARE DESIGNATED BY WRITTEN AUTHORIZATION.



GENERAL STRUCTURE NOTES:

ALL WORK SHALL BE DONE IN ACCORDANCE WITH CITY OR COUNTY STANDARD CONSTRUCTION SPECIFICATIONS. EXCEPT AS SHOWN IN THE PLANS, STRUCTURE EXCAVATION AND BACKFILL SHALL BE IN ACCORDANCE WITH CDOT M-206-1, AND M-206-2 EXPANSION JOINT MATERIAL SHALL MEET AASHTO SPECIFICATION M-213

THE INFORMATION SHOWN ON THESE PLANS CONCERNING THE TYPE AND LOCATION OF UNDERGROUND UTILITIES IS NOT GUARANTEED TO BE ACCURATE OR ALL INCLUSIVE. THE CONTRACTOR IS RESPONSIBLE FOR MAKING HIS OWN DETERMINATION AS TO THE TYPE AND LOCATION OF UNDERGROUND UTILITIES AS MAY BE NECESSARY TO AVOID DAMAGE THERETO. THE CONTRACTOR SHALL CONTACT THE UTILITY NOTIFICATION CENTER OF COLORADO A 1-800-922-1987 AT LEAST 2 DAYS (NOT INCLUDING THE DAY OF NOTIFICATION) PRIOR TO ANY EXCAVATION OF OTHER.

THE CONTRACTOR IS SOLELY RESPONSIBLE FOR DESIGNING AND PROVIDING ALL BRACING AND SHORING AS REQUIRED FOR THE PROTECTION OF LIFE AND PROPERTY DURING CONSTRUCTION. THE CONTRACTOR IS SOLELY RESPONSIBLE FOR THE EXCAVATION PROCEDURES INCLUDING ANY SHORING REQUIRED FOR THE PROTECTION OF LIFE AND PROPERTY DURING CONSTRUCTION.

THE CONTRACTOR IS SOLELY RESPONSIBLE FOR ALL METHODS AND MEANS OF CONSTRUCTION AS WELL AS ALL JOB SITE SAFETY & HEALTH PRECAUTIONS.

ALL SOILS WORK INCLUDING (BUT NOT LIMITED TO) PIER DRILLING AND CONSTRUCTION, SOILS EXCAVATION, FILL PLACEMENT, AND STRUCTURE BACKFILL SHALL BE IN ACCORDANCE WITH THE PROJECT GEOTECHNICAL REPORT, UNLESS MORE STRINGENT REQUIREMENTS ARE PRINTED ON THE "IRRIGATION NOTES".

BACKFILL SHALL NOT BEGIN UNTIL CONCRETE WALLS REACH COMPRESSION STRENGTH AT LEAST 80 PERCENT OF THE REQUIRED 28 DAY STRENGTH, 0.8fc'.

REINFORCED CONCRETE:
CLASS D CONCRETE: fc'=4,500 psi
REINFORCING STEEL: fy=60,000 psi
ALL CAST-IN-PLACE CONCRETE SHALL BE CLASS D UNLESS NOTED OTHERWISE.

REINFORCING BARS SHALL CONFORM TO ASTM A615, GRADE 60 U.N.O.
REINFORCING BARS TO BE WELDED SHALL CONFORM TO ASTM A706, GRADE 60.
ALL REINFORCING, EXCEPT PIER REINFORCING, SHALL BE EPOXY COATED AND SHALL CONFORM TO ASTM A775.
ALL REINFORCING SHALL HAVE 2" CONCRETE COVER, U.N.O. ON PLANS, 3" AGAINST GROUND (BOTTOM SLAB)
ALL REINFORCING SHALL BE HOOKED AROUND CORNERS AND LAPPED, SEE DETAILS.
ALL LAP SPLICE LOCATIONS SHALL BE SUBMITTED TO ENGINEER FOR REVIEW AND APPROVAL PRIOR TO CONSTRUCTION.

THE FOLLOWING TABLE GIVES THE MINIMUM CLASS B (STAGGERED) LAP SPLICE LENGTH FOR EPOXY COATED REINFORCING BARS PLACE IN ACCORDANCE WITH SUBSECTION 602.06. THESE SPLICE LENGTHS SHALL BE INCREASED BY 25% FOR BARS SPACED AT LESS THAN 6" ON CENTER. INCREASED BY 40% FOR HORIZONTAL BARS WITH MORE THAN 12" OF CONCRETE BELOW (TOP BARS.), AND INCREASED BY 75% IF BOTH CONDITIONS EXIST. THE INCREASES ABOVE FOR #6 THRU #11 BARS MAY BE 25%, 13%, AND 42% RESPECTIVELY.

#4	1'-3"	#5	1'-7"
#6	2'-5"	#7	2'-10"
#8	3'-8"	#9	4'-8"
#10	5'-11"	#11	7'-3"

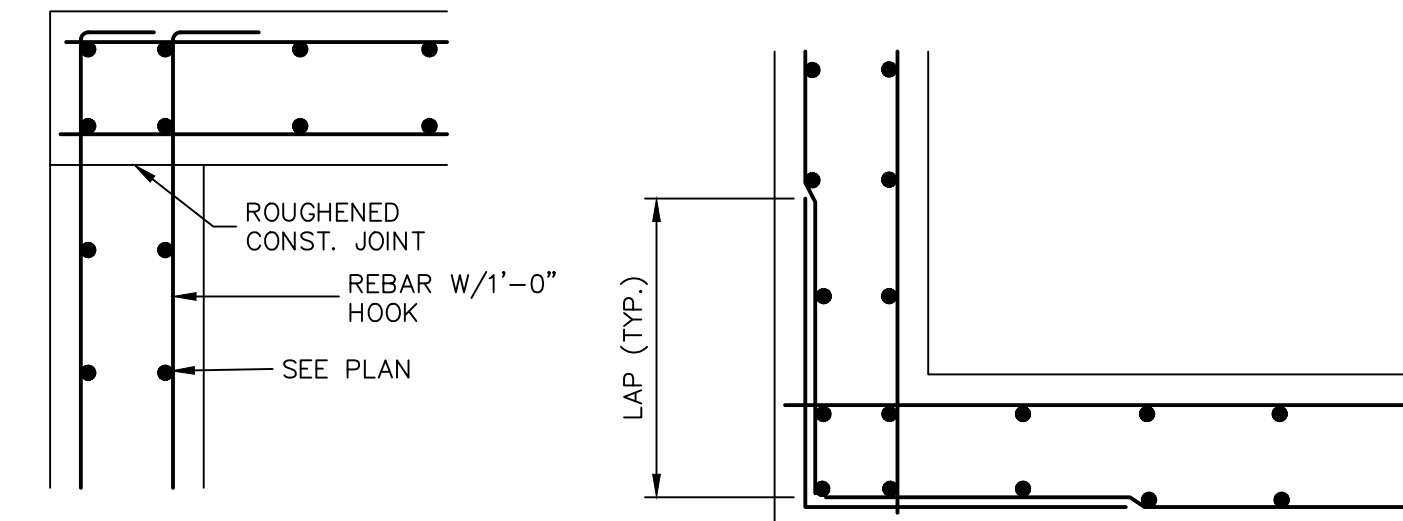
WHEN THE CONTRACTOR ELECTS TO SUBSTITUTE EPOXY COATED REINFORCEMENT FOR BLACK REINFORCING BARS. THE MINIMUM LAP SPLICE SHALL BE AS DESCRIBED ABOVE.

STATIONS, ELEVATIONS, AND DIMENSIONS CONTAINED IN THESE PLANS ARE CALCULATED FROM A RECENT FIELD SURVEY. THE CONTRACTOR SHALL VERIFY ALL DEPENDENT DIMENSIONS IN THE FIELD BEFORE ORDERING OR FABRICATING ANY MATERIAL.

THE CONTRACTOR SHALL SUBMIT REINFORCING STEEL PLACING DRAWINGS (PRIOR TO CONSTRUCTION) TO THE ENGINEER FOR REVIEW FOR CONFORMANCE WITH THE DESIGN DRAWINGS. THE DESIGN DRAWINGS SHALL GOVERN OVER PLACING DRAWINGS IN ALL CASES UNLESS MODIFICATIONS ARE APPROVED IN WRITING BY ENGINEER.

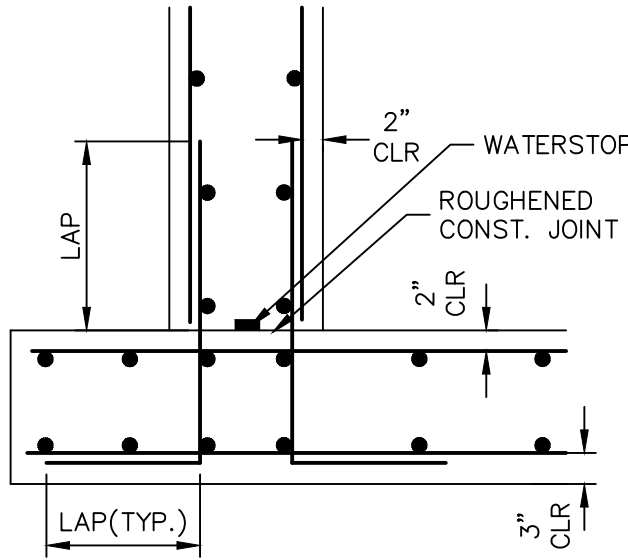
THE CONTRACTOR SHALL BE RESPONSIBLE FOR THE STABILITY OF THE STRUCTURE DURING CONSTRUCTION.

E.F. =	EACH FACE	O.F. =	OUTSIDE FACE
F.E. =	FAR FACE	T.&B. =	TOP AND BOTTOM
N.F. =	NEAR FACE	T.F. =	TOP FACE
I.F. =	INSIDE FACE	B.F. =	BOTTOM FACE
T.W. =	TWO WAY	T.F. =	TWO FACES
E.S. =	EACH SIDE	Lp =	LAP LENGTH

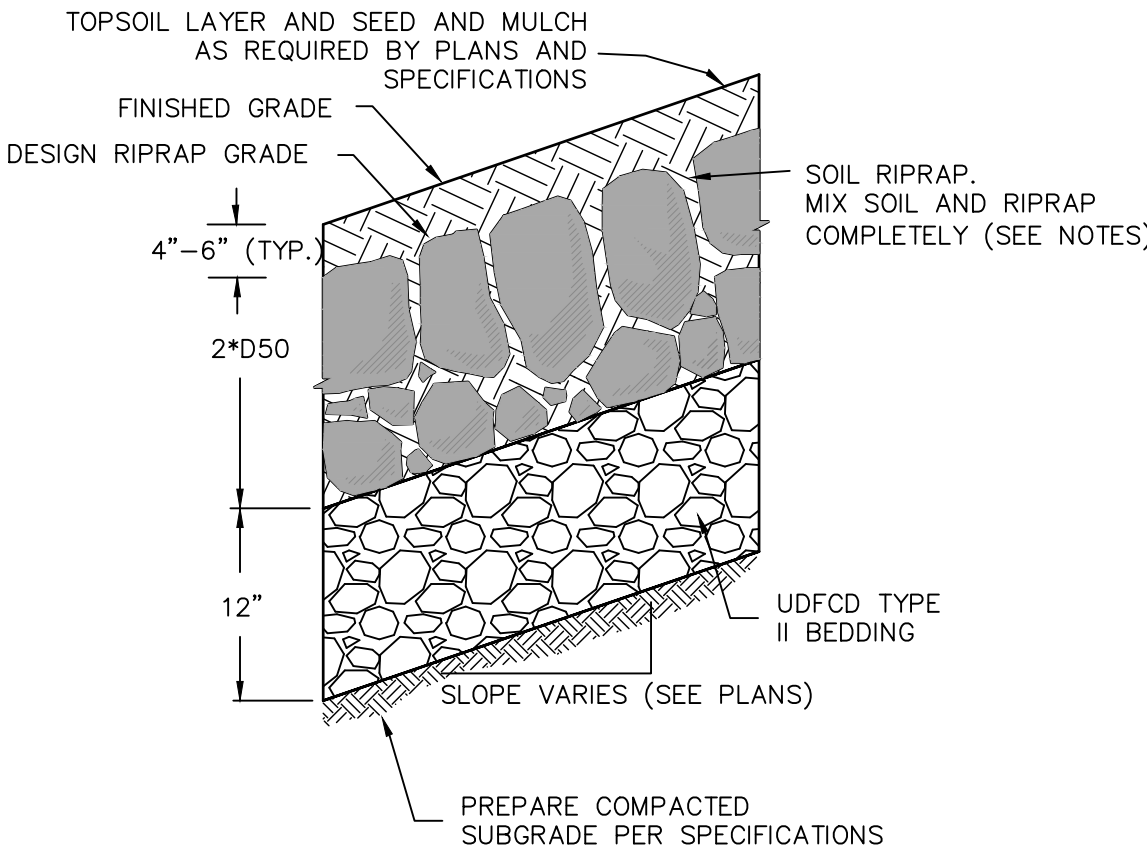


TYPICAL TOP CORNER WALL SECTION DETAIL

TYPICAL WALL CORNER PLAN VIEW



TYPICAL BOTTOM CORNER WALL SECTION DETAIL



SOIL RIPRAP EMBANKMENT PROTECTION WITH BEDDING TYP. SECTION
N.T.S.

TYPE VL RIPRAP

INTERMEDIATE ROCK DIMENSION (IN.)	PERCENT PASSING (%)
12	70-100
9	50-70
6	35-50
2	2-10

*TYPE VL RIPRAP D50=6".
D50 = MEAN PARTICLE SIZE (INTERMEDIATE DIMENSION) BY WEIGHT.

TYPE L RIPRAP

INTERMEDIATE ROCK DIMENSION (IN.)	PERCENT PASSING (%)
15	70-100
12	50-70
9	35-50
3	2-10

*TYPE L RIPRAP D50=9".
D50 = MEAN PARTICLE SIZE (INTERMEDIATE DIMENSION) BY WEIGHT.

RIPRAP NOTES:

1. SOIL RIPRAP DETAILS ARE APPLICABLE TO SLOPED AREAS. REFER TO THE SITE PLAN ACTUAL LOCATION AND LIMITS.
2. MIX UNIFORMLY 65% RIPRAP BY VOLUME WITH 35% OF APPROVED SOIL BY VOLUME PRIOR TO PLACEMENT.
3. PLACE STONE-SOIL MIX TO RESULT IN SECURELY INTERLOCKED ROCK AT THE DESIGN THICKNESS AND GRADE. COMPACT AND LEVEL TO ELIMINATE ALL VOIDS AND ROCKS PROJECTING ABOVE DESIGN RIPRAP TOP GRADE.
4. CRIMP OR TACKIFY MULCH OR USE APPROVED HYDROMULCH AS CALLED FOR IN THE PLANS AND SPECIFICATIONS.
5. ROCK SHALL BE HARD, DURABLE, ANGULAR IN SHAPE, AND FREE FROM CRACKS, OVERBURDEN, SHALE, AND ORGANIC MATTER.
6. NEITHER BREADTH NOR THICKNESS OF A SINGLE STONE SHOULD BE LESS THAN ONE-THIRD ITS LENGTH, AND ROUNDED STONE SHOULD BE AVOIDED.
7. THE ROCK SHOULD SUSTAIN A LOSS OF NOT MORE THAN 40% AFTER 500 REVOLUTIONS IN AN ABRASION TEST (LOS ANGELES MACHINE ASTM C-535-69) AND SHOULD SUSTAIN A LOSS OF NOT MORE THAN 10% AFTER 12 CYCLES OF FREEZING AND THAWING (AASHTO TEST 103 FOR LEDGE ROCK PROCEDURE A).
8. ROCK HAVING A MINIMUM SPECIFIC GRAVITY OF 2.65 IS PREFERRED; HOWEVER, IN NO CASE SHOULD ROCK HAVE A SPECIFIC GRAVITY LESS THAN 2.50.

CAST-IN-PLACE STRUCTURAL NOTES:

1. ALL CONSTRUCTION JOINTS SHALL BE THOROUGHLY CLEANED BEFORE FRESH CONCRETE IS POURED.
2. ALL CONSTRUCTION JOINTS NOT SHOWN ON THE PLANS SHALL BE APPROVED BY THE ENGINEER.
3. THE CONTRACTOR IS RESPONSIBLE FOR THE STABILITY OF THE STRUCTURE DURING CONSTRUCTION.
4. DO NOT BACKFILL UNTIL CONCRETE HAS REACHED DESIGN STRENGTH, F'c.
5. ALL EXPOSED CONCRETE CORNERS SHALL BE CHAMFERED 3/4".
6. CONTRACTOR SHALL SUBMIT STEEL REINFORCING SHOP DRAWINGS FOR ALL CAST-IN-PLACE STRUCTURES FOR ENGINEER'S APPROVAL PRIOR TO CONSTRUCTION.
7. HEADWALLS FOR PIPES SHALL BE CONSTRUCTED PER CDOT M-601-10.
8. WINGWALLS SHALL BE CONSTRUCTED PER CDOT M-601-20.

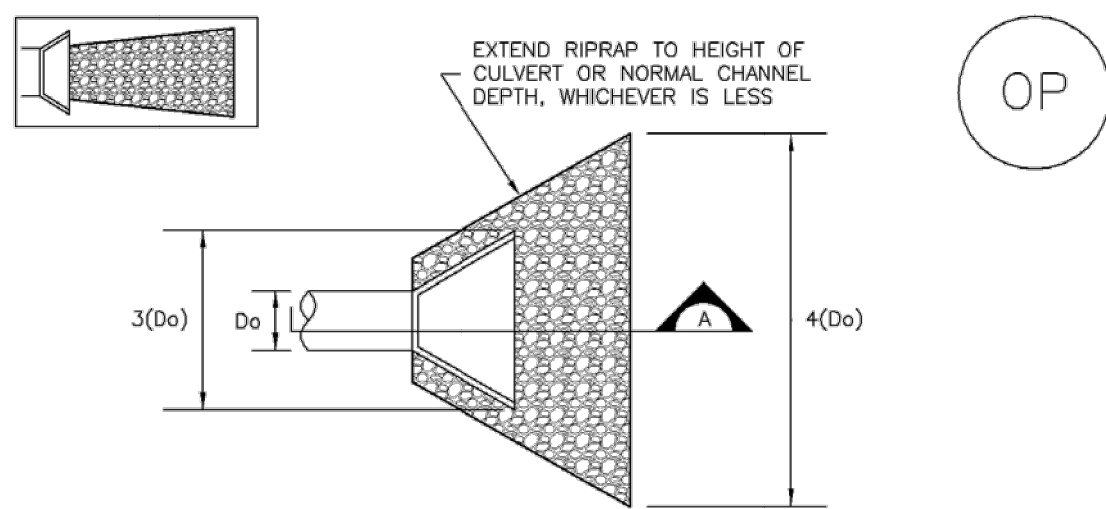
UNTIL SUCH TIME AS THESE DRAWINGS ARE APPROVED BY THE APPROPRIATE REVIEWING AGENCIES, OR ENGINEERING APPROVES THEIR USE, THESE DRAWINGS SHALL BE DESIGNATED BY WRITTEN AUTHORIZATION.

PREPARED FOR
SCOTT BELKNAP
3603 FIRST LIGHT DRIVE
CASTLE ROCK, CO 80109
(719)-322-3556
SCOTT.BELKNAP@YAHOO.COM

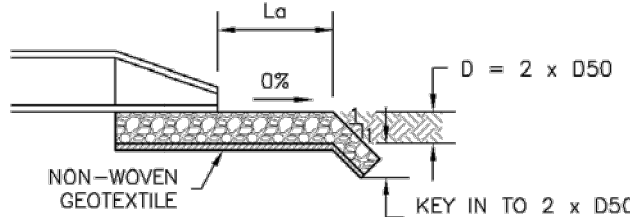


J.R. ENGINEERING
A Western Company
Centennial 303-740-9888 • Colorado Springs 719-583-2583
Fort Collins 970-491-9888 • www.jrengineering.com

H-SCALE	V-SCALE	DATE	DESIGNED BY	DRAWN BY	CHECKED BY	No.	REVISION	BY	DATE	VOLLMER RV STORAGE
		06/24/22	AL	AL						POND DETAILS
SHEET 5 OF 7										
JOB NO. 25251.00										



TEMPORARY OUTLET PROTECTION PLAN



SECTION A

TABLE OP-1. TEMPORARY OUTLET PROTECTION SIZING TABLE			
PIPE DIAMETER, D ₀ (INCHES)	DISCHARGE, Q (CFS)	APRON LENGTH, L _a (FT)	RIPRAP D ₅₀ MIN (INCHES)
8	2.5	5	4
	5	10	6
12	5	10	4
	10	13	6
18	10	10	6
	20	16	9
	30	23	12
24	40	26	16
	30	16	9
	40	28	9
	50	28	12
	60	30	16

OP-1. TEMPORARY OUTLET PROTECTION

TEMPORARY OUTLET PROTECTION INSTALLATION NOTES

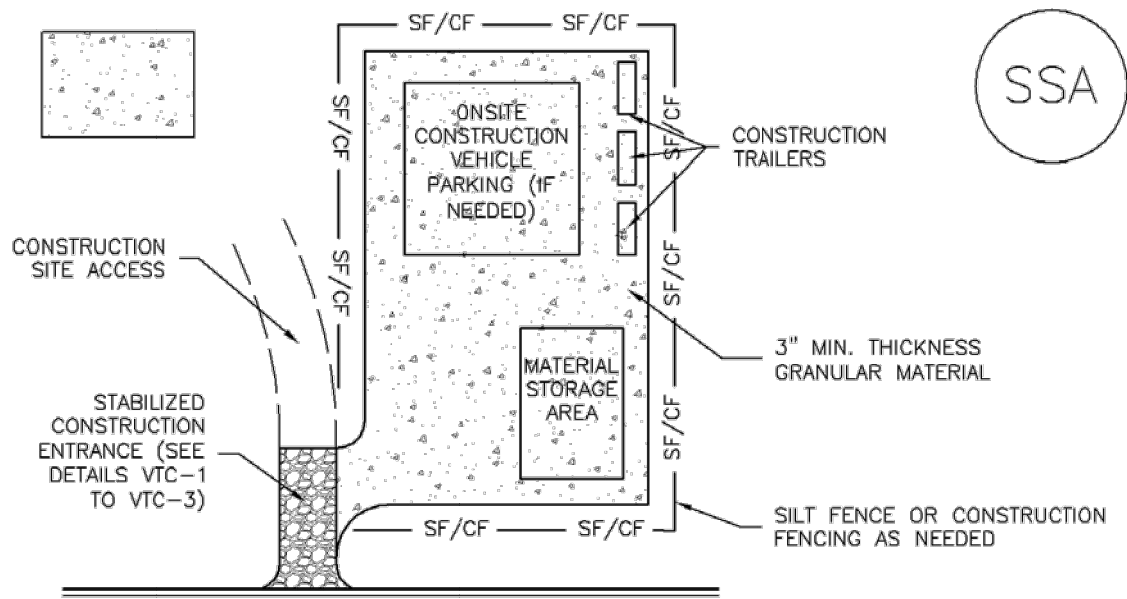
1. SEE PLAN VIEW FOR
-LOCATION OF OUTLET PROTECTION.
-DIMENSIONS OF OUTLET PROTECTION.
2. DETAIL IS INTENDED FOR PIPES WITH SLOPE ≤ 10%. ADDITIONAL EVALUATION OF RIPRAP SIZING AND OUTLET PROTECTION DIMENSIONS REQUIRED FOR STEEPER SLOPES.
3. TEMPORARY OUTLET PROTECTION INFORMATION IS FOR OUTLETS INTENDED TO BE UTILIZED LESS THAN 2 YEARS.

TEMPORARY OUTLET PROTECTION INSPECTION AND MAINTENANCE NOTES

1. INSPECT BMPs EACH WORKDAY, AND MAINTAIN THEM IN EFFECTIVE OPERATING CONDITION. MAINTENANCE OF BMPs SHOULD BE PROACTIVE, NOT REACTIVE. INSPECT BMPs AS SOON AS POSSIBLE (AND ALWAYS WITHIN 24 HOURS) FOLLOWING A STORM THAT CAUSES SURFACE EROSION, AND PERFORM NECESSARY MAINTENANCE.
2. FREQUENT OBSERVATIONS AND MAINTENANCE ARE NECESSARY TO MAINTAIN BMPs IN EFFECTIVE OPERATING CONDITION. INSPECTIONS AND CORRECTIVE MEASURES SHOULD BE DOCUMENTED THOROUGHLY.
3. WHERE BMPs HAVE FAILED, REPAIR OR REPLACEMENT SHOULD BE INITIATED UPON DISCOVERY OF THE FAILURE.

NOTE: MANY JURISDICTIONS HAVE BMP DETAILS THAT VARY FROM UDFCD STANDARD DETAILS. CONSULT WITH LOCAL JURISDICTIONS AS TO WHICH DETAIL SHOULD BE USED WHEN DIFFERENCES ARE NOTED.

(DETAILS ADAPTED FROM AURORA, COLORADO AND PREVIOUS VERSION OF VOLUME 3, NOT AVAILABLE IN AUTOCAD)



SSA-1. STABILIZED STAGING AREA

STABILIZED STAGING AREA INSTALLATION NOTES

1. SEE PLAN VIEW FOR
-LOCATION OF STAGING AREA(S).
-CONTRACTOR MAY ADJUST LOCATION AND SIZE OF STAGING AREA WITH APPROVAL FROM THE LOCAL JURISDICTION.
2. STABILIZED STAGING AREA SHOULD BE APPROPRIATE FOR THE NEEDS OF THE SITE. OVERSIZING RESULTS IN A LARGER AREA TO STABILIZE FOLLOWING CONSTRUCTION.
3. STAGING AREA SHALL BE STABILIZED PRIOR TO OTHER OPERATIONS ON THE SITE.
4. THE STABILIZED STAGING AREA SHALL CONSIST OF A MINIMUM 3" THICK GRANULAR MATERIAL.
5. UNLESS OTHERWISE SPECIFIED BY LOCAL JURISDICTION, ROCK SHALL CONSIST OF DOT SECT. #703, AASHTO #3 COARSE AGGREGATE OR 6" (MINUS) ROCK.
6. ADDITIONAL PERIMETER BMPs MAY BE REQUIRED INCLUDING BUT NOT LIMITED TO SILT FENCE AND CONSTRUCTION FENCING.

STABILIZED STAGING AREA MAINTENANCE NOTES

1. INSPECT BMPs EACH WORKDAY, AND MAINTAIN THEM IN EFFECTIVE OPERATING CONDITION. MAINTENANCE OF BMPs SHOULD BE PROACTIVE, NOT REACTIVE. INSPECT BMPs AS SOON AS POSSIBLE (AND ALWAYS WITHIN 24 HOURS) FOLLOWING A STORM THAT CAUSES SURFACE EROSION, AND PERFORM NECESSARY MAINTENANCE.
2. FREQUENT OBSERVATIONS AND MAINTENANCE ARE NECESSARY TO MAINTAIN BMPs IN EFFECTIVE OPERATING CONDITION. INSPECTIONS AND CORRECTIVE MEASURES SHOULD BE DOCUMENTED THOROUGHLY.
3. WHERE BMPs HAVE FAILED, REPAIR OR REPLACEMENT SHOULD BE INITIATED UPON DISCOVERY OF THE FAILURE.
4. ROCK SHALL BE REAPPLIED OR REGRADED AS NECESSARY IF RUTTING OCCURS OR UNDERLYING SUBGRADE BECOMES EXPOSED.

STABILIZED STAGING AREA MAINTENANCE NOTES

5. STABILIZED STAGING AREA SHALL BE ENLARGED IF NECESSARY TO CONTAIN PARKING, STORAGE, AND UNLOADING/LOADING OPERATIONS.
6. THE STABILIZED STAGING AREA SHALL BE REMOVED AT THE END OF CONSTRUCTION. THE GRANULAR MATERIAL SHALL BE REMOVED OR, IF APPROVED BY THE LOCAL JURISDICTION, USED ON SITE, AND THE AREA COVERED WITH TOPSOIL, SEEDED AND MULCHED OR OTHERWISE STABILIZED IN A MANNER APPROVED BY LOCAL JURISDICTION.


NOTE: MANY MUNICIPALITIES PROHIBIT THE USE OF RECYCLED CONCRETE AS GRANULAR MATERIAL FOR STABILIZED STAGING AREAS DUE TO DIFFICULTIES WITH RE-ESTABLISHMENT OF VEGETATION IN AREAS WHERE RECYCLED CONCRETE WAS PLACED.

NOTE: MANY JURISDICTIONS HAVE BMP DETAILS THAT VARY FROM UDFCD STANDARD DETAILS. CONSULT WITH LOCAL JURISDICTIONS AS TO WHICH DETAIL SHOULD BE USED WHEN DIFFERENCES ARE NOTED.

(DETAILS ADAPTED FROM DOUGLAS COUNTY, COLORADO, NOT AVAILABLE IN AUTOCAD)

UNTIL SUCH TIME AS THESE DRAWINGS ARE APPROVED BY THE APPROPRIATE REVIEWING AGENCIES, OR ENGINEERING APPROVES THEIR USE, THESE DRAWINGS ARE DESIGNATED BY WRITTEN AUTHORIZATION.

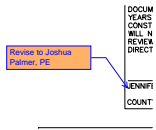
PREPARED FOR
SCOTT BELKNAP
3603 FIRST LIGHT DRIVE
CASTLE ROCK, CO 80109
(719) 322-3556
SCOTT.BELKNAP@YAHOO.COM

J.R. ENGINEERING
A Western Company

Central 303-740-9888 • Colorado Springs 719-583-2583
Fort Collins 970-491-9888 • www.jrengineering.com

SHEET		7		OF		7		VOLLMER RV STORAGE		H-SCALE		N/A		No.		REVISION		BY		DATE	
JOB NO.		25251.00						GEC DETAILS		DATE		06/24/22									
										DESIGNED BY		AL									
										DRAWN BY		AL									
										CHECKED BY											

Grading and Erosion Control Plan_V1.pdf Markup Summary

8/25/2022 3:17:11 PM (1)



Subject: Callout
Page Label: [1] 1 CV01
Author: lpackman
Date: 8/25/2022 3:17:11 PM
Status:
Color: ■
Layer:
Space:

Revise to Joshua Palmer, PE

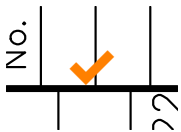
8/25/2022 3:17:28 PM (1)



Subject: Callout
Page Label: [1] 1 CV01
Author: lpackman
Date: 8/25/2022 3:17:28 PM
Status:
Color: ■
Layer:
Space:

Add PCD File No PPR-2245

8/25/2022 3:39:33 PM (1)



Subject: Text Box
Page Label: [1] 1 CV01
Author: lpackman
Date: 8/25/2022 3:39:33 PM
Status:
Color: ■
Layer:
Space:

8/25/2022 4:07:58 PM (1)



Subject: Text Box
Page Label: [1] 1 CV01
Author: lpackman
Date: 8/25/2022 4:07:58 PM
Status:
Color: ■
Layer:
Space:

Provide a copy of the soils report for reference.

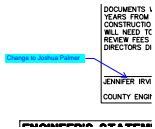
8/25/2022 5:16:12 PM (1)



Subject: Text Box
Page Label: [1] 1 CV01
Author: CDurham
Date: 8/25/2022 5:16:12 PM
Status:
Color: ■
Layer:
Space:

PCD File No. PPR-22-045

8/25/2022 5:16:26 PM (1)



Subject: Callout
Page Label: [1] 1 CV01
Author: CDurham
Date: 8/25/2022 5:16:26 PM
Status:
Color: ■
Layer:
Space:

Change to Joshua Palmer

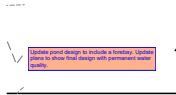
8/29/2022 10:17:26 AM (1)



Subject: Text Box
Page Label: [5] 5 Pond DT02
Author: lpackman
Date: 8/29/2022 10:17:26 AM
Status:
Color: ■
Layer:
Space:

Update pond design to include a forebay. Update plans to show final design with permanent water quality.

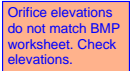
8/29/2022 10:17:34 AM (1)



Subject: Text Box
Page Label: [4] 4 Pond DT01
Author: lpackman
Date: 8/29/2022 10:17:34 AM
Status:
Color: ■
Layer:
Space:

Update pond design to include a forebay. Update plans to show final design with permanent water quality.

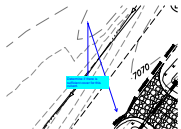
8/29/2022 10:42:55 AM (1)



Subject: Text Box
Page Label: [5] 5 Pond DT02
Author: lpackman
Date: 8/29/2022 10:42:55 AM
Status:
Color: ■
Layer:
Space:

Orifice elevations do not match BMP worksheet. Check elevations.

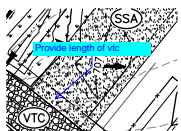
8/29/2022 6:05:47 AM (1)



Subject: Callout
Page Label: [4] 4 Pond DT01
Author: CDurham
Date: 8/29/2022 6:05:47 AM
Status:
Color: ■
Layer:
Space:

Determine if there is sufficient cover for this culvert.

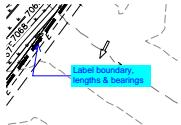
8/29/2022 6:06:47 AM (1)



Subject: Callout
Page Label: [4] 4 Pond DT01
Author: CDurham
Date: 8/29/2022 6:06:47 AM
Status:
Color: ■
Layer:
Space:

Provide length of vtc

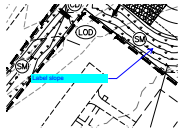
8/29/2022 6:07:24 AM (1)



Subject: Callout
Page Label: [4] 4 Pond DT01
Author: CDurham
Date: 8/29/2022 6:07:24 AM
Status:
Color: ■
Layer:
Space:

Label boundary, lengths & bearings

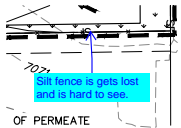
8/29/2022 6:08:10 AM (1)



Subject: Callout
Page Label: [4] 4 Pond DT01
Author: CDurham
Date: 8/29/2022 6:08:10 AM
Status:
Color: ■
Layer:
Space:

Label slope

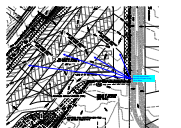
8/29/2022 6:08:39 AM (1)



Subject: Callout
Page Label: [4] 4 Pond DT01
Author: CDurham
Date: 8/29/2022 6:08:39 AM
Status:
Color: ■
Layer:
Space:

Silt fence is gets lost and is hard to see.

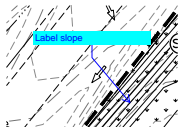
8/29/2022 6:09:22 AM (1)



Subject: Callout
Page Label: [4] 4 Pond DT01
Author: CDurham
Date: 8/29/2022 6:09:22 AM
Status:
Color: ■
Layer:
Space:

Provide approximate centerline slopes along drive aisles

8/29/2022 6:09:47 AM (1)



Subject: Callout
Page Label: [4] 4 Pond DT01
Author: CDurham
Date: 8/29/2022 6:09:47 AM
Status:
Color: ■
Layer:
Space:

Label slope

8/29/2022 6:10:27 AM (1)



Subject: Callout
Page Label: [4] 4 Pond DT01
Author: CDurham
Date: 8/29/2022 6:10:27 AM
Status:
Color: ■
Layer:
Space:

include roadway classification

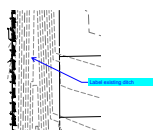
8/29/2022 6:10:56 AM (1)



Subject: Callout
Page Label: [4] 4 Pond DT01
Author: CDurham
Date: 8/29/2022 6:10:56 AM
Status:
Color: ■
Layer:
Space:

Did not see this anywhere on plan. Is it needed?

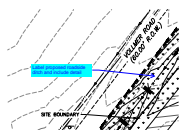
8/29/2022 6:11:16 AM (1)



Subject: Callout
Page Label: [4] 4 Pond DT01
Author: CDurham
Date: 8/29/2022 6:11:16 AM
Status:
Color: ■
Layer:
Space:

Label existing ditch

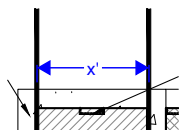
8/29/2022 6:11:35 AM (1)



Subject: Callout
Page Label: [4] 4 Pond DT01
Author: CDurham
Date: 8/29/2022 6:11:35 AM
Status:
Color: ■
Layer:
Space:

Label proposed roadside ditch and include detail

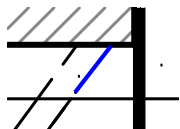
8/29/2022 6:12:29 AM (1)



Subject: Dimension
Page Label: [5] 5 Pond DT02
Author: CDurham
Date: 8/29/2022 6:12:29 AM
Status:
Color: ■
Layer:
Space:

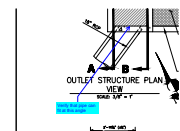
x'

8/29/2022 6:13:20 AM (1)



Subject: Line
Page Label: [5] 5 Pond DT02
Author: CDurham
Date: 8/29/2022 6:13:20 AM
Status:
Color: ■
Layer:
Space:

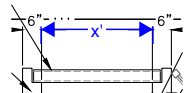
8/29/2022 6:13:43 AM (1)



Subject: Callout
Page Label: [5] 5 Pond DT02
Author: CDurham
Date: 8/29/2022 6:13:43 AM
Status:
Color: ■
Layer:
Space:

Verify that pipe can fit at this angle

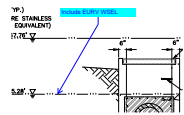
8/29/2022 6:14:05 AM (1)



Subject: Dimension
Page Label: [5] 5 Pond DT02
Author: CDurham
Date: 8/29/2022 6:14:05 AM
Status:
Color:
Layer:
Space:

x'

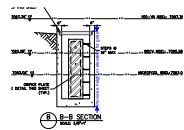
8/29/2022 6:14:24 AM (1)



Subject: Callout
Page Label: [5] 5 Pond DT02
Author: CDurham
Date: 8/29/2022 6:14:24 AM
Status:
Color:
Layer:
Space:

Include EURV WSEL

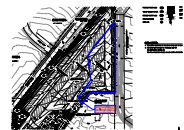
8/29/2022 6:16:40 AM (1)



Subject: Dimension
Page Label: [5] 5 Pond DT02
Author: CDurham
Date: 8/29/2022 6:16:40 AM
Status:
Color:
Layer:
Space:

Provide a height or elevation for grate

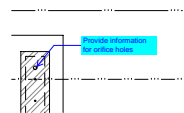
8/29/2022 6:17:13 AM (1)



Subject: Cloud+
Page Label: [4] 4 Pond DT01
Author: lpackman
Date: 8/29/2022 6:17:13 AM
Status:
Color:
Layer:
Space:

It appears the clouded areas of the site are not draining towards the TSB. Per ECM I.7.1.C.1.a the applicable development must drain towards water quality structure.

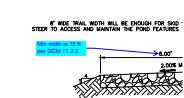
8/29/2022 6:17:14 AM (1)



Subject: Callout
Page Label: [5] 5 Pond DT02
Author: CDurham
Date: 8/29/2022 6:17:14 AM
Status:
Color:
Layer:
Space:

Provide information for orifice holes

8/29/2022 6:19:31 AM (1)



Subject: Callout
Page Label: [5] 5 Pond DT02
Author: CDurham
Date: 8/29/2022 6:19:31 AM
Status:
Color:
Layer:
Space:

Min width is 15 ft per DCM 11.2.2

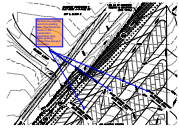
8/29/2022 6:19:52 AM (1)



Subject: Callout
Page Label: [5] 5 Pond DT02
Author: CDurham
Date: 8/29/2022 6:19:52 AM
Status:
Color: ■
Layer:
Space:

Update elevation

8/29/2022 6:22:39 AM (1)



Subject: Callout
Page Label: [4] 4 Pond DT01
Author: lpackman
Date: 8/29/2022 6:22:39 AM
Status:
Color: ■
Layer:
Space:

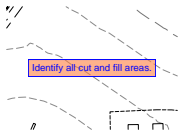
Remove any asphalt work from grading plan. That should be shown in the construction plan/sheet. Only Show grading. Revise flow arrows if necessary.

8/29/2022 6:25:53 AM (1)



Subject: Callout
Page Label: [4] 4 Pond DT01
Author: lpackman
Date: 8/29/2022 6:25:53 AM
Status:
Color: ■
Layer:
Space:

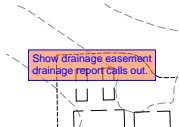
8/29/2022 6:46:03 AM (1)



Subject: Text Box
Page Label: [4] 4 Pond DT01
Author: lpackman
Date: 8/29/2022 6:46:03 AM
Status:
Color: ■
Layer:
Space:

Identify all cut and fill areas.

8/29/2022 6:57:55 AM (1)



Subject: Text Box
Page Label: [4] 4 Pond DT01
Author: lpackman
Date: 8/29/2022 6:57:55 AM
Status:
Color: ■
Layer:
Space:

Show drainage easement drainage report calls out.

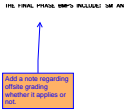
8/29/2022 7:05:05 AM (1)



Subject: Callout
Page Label: [4] 4 Pond DT01
Author: lpackman
Date: 8/29/2022 7:05:05 AM
Status:
Color: ■
Layer:
Space:

Call out spillway dimensions.

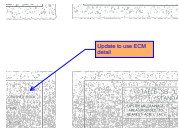
8/29/2022 7:07:56 AM (1)



Subject: Callout
Page Label: [4] 4 Pond DT01
Author: lpackman
Date: 8/29/2022 7:07:56 AM
Status:
Color: ■
Layer:
Space:

Add a note regarding offsite grading whether it applies or not.

8/29/2022 8:24:24 AM (1)



Subject: Callout
Page Label: [7] 7 DT02
Author: lpackman
Date: 8/29/2022 8:24:24 AM
Status:
Color: ■
Layer:
Space:

Update to use ECM detail

8/29/2022 8:27:55 AM (1)



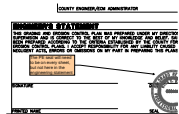
Subject: Cloud
Page Label: [4] 4 Pond DT01
Author: lpackman
Date: 8/29/2022 8:27:55 AM
Status:
Color: ■
Layer:
Space:

9/2/2022 1:27:44 PM (1)



Subject: Rectangle
Page Label: [1] 1 CV01
Author: dotprete
Date: 9/2/2022 1:27:44 PM
Status:
Color: ■
Layer:
Space:

9/2/2022 1:29:00 PM (1)



Subject: Engineer
Page Label: [1] 1 CV01
Author: dotprete
Date: 9/2/2022 1:29:00 PM
Status:
Color: ■
Layer:
Space:

The PE seal will need to be on every sheet, but not here in the engineering statement

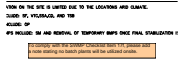
9/2/2022 1:42:30 PM (1)



Subject: Engineer
Page Label: [4] 4 Pond DT01
Author: dotprete
Date: 9/2/2022 1:42:30 PM
Status:
Color: ■
Layer:
Space:

discuss the existing vegetation on site. what type/percent cover.

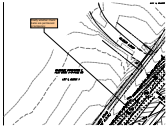
9/2/2022 1:45:38 PM (1)



Subject: Engineer
Page Label: [4] 4 Pond DT01
Author: dotprete
Date: 9/2/2022 1:45:38 PM
Status:
Color: ■
Layer:
Space:

To comply with the SWMP Checklist Item 17f, please add a note stating no batch plants will be utilized onsite.

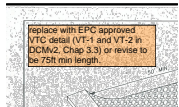
9/2/2022 2:22:32 PM (1)



Subject: Engineer
Page Label: [4] 4 Pond DT01
Author: dotprete
Date: 9/2/2022 2:22:32 PM
Status:
Color: ■
Layer:
Space:

Clarify whether check dams are permanent or temporary

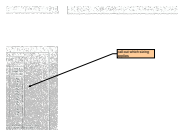
9/2/2022 2:25:06 PM (1)



Subject: Engineer
Page Label: [7] 7 DT02
Author: dotprete
Date: 9/2/2022 2:25:06 PM
Status:
Color: ■
Layer:
Space:

replace with EPC approved VTC detail (VT-1 and VT-2 in DCMv2, Chap 3.3) or revise to be 75ft min length.

9/2/2022 2:25:57 PM (1)



Subject: Engineer
Page Label: [7] 7 DT02
Author: dotprete
Date: 9/2/2022 2:25:57 PM
Status:
Color: ■
Layer:
Space:

call out which sizing applies

9/2/2022 2:26:14 PM (1)



Subject: Rectangle
Page Label: [7] 7 DT02
Author: dotprete
Date: 9/2/2022 2:26:14 PM
Status:
Color: □
Layer:
Space:

9/2/2022 2:26:27 PM (1)



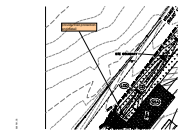
Subject: Rectangle
Page Label: [7] 7 DT02
Author: dotprete
Date: 9/2/2022 2:26:27 PM
Status:
Color: □
Layer:
Space:

9/2/2022 2:26:35 PM (1)



Subject: Rectangle
Page Label: [7] 7 DT02
Author: dotprete
Date: 9/2/2022 2:26:35 PM
Status:
Color: ☐
Layer:
Space:

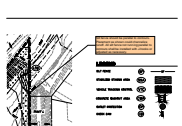
9/2/2022 2:28:17 PM (1)



Subject: Engineer
Page Label: [4] 4 Pond DT01
Author: dotprete
Date: 9/2/2022 2:28:17 PM
Status:
Color: ☒
Layer:
Space:

provide inlet protection and detail

9/2/2022 2:29:49 PM (1)



Subject: Engineer
Page Label: [4] 4 Pond DT01
Author: dotprete
Date: 9/2/2022 2:29:49 PM
Status:
Color: ☒
Layer:
Space:

Silt fence should be parallel to contours.
Placement as shown could channelize runoff. All
silt fence not running parallel to contours shall be
installed with J-hooks or adjusted as necessary.

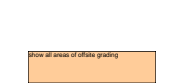
9/2/2022 2:30:20 PM (1)



Subject: Engineer
Page Label: [7] 7 DT02
Author: dotprete
Date: 9/2/2022 2:30:20 PM
Status:
Color: ☒
Layer:
Space:

include concrete washout detail and inlet
protection detail

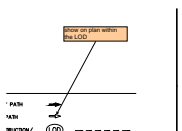
9/2/2022 2:31:28 PM (1)



Subject: Engineer
Page Label: [4] 4 Pond DT01
Author: dotprete
Date: 9/2/2022 2:31:28 PM
Status:
Color: ☒
Layer:
Space:

show all areas of offsite grading

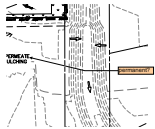
9/2/2022 2:31:58 PM (1)



Subject: Engineer
Page Label: [4] 4 Pond DT01
Author: dotprete
Date: 9/2/2022 2:31:58 PM
Status:
Color: ☒
Layer:
Space:

show on plan within the LOD

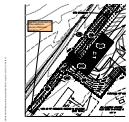
9/2/2022 2:32:35 PM (1)



Subject: Engineer
Page Label: [4] 4 Pond DT01
Author: dotprete
Date: 9/2/2022 2:32:35 PM
Status:
Color: ■
Layer:
Space:

permanent?

9/2/2022 3:18:14 PM (1)



Subject: Engineer
Page Label: [4] 4 Pond DT01
Author: dotprete
Date: 9/2/2022 3:18:14 PM
Status:
Color: ■
Layer:
Space:

add rock check dam or straw wattles to prevent
offsite soil migration

9/2/2022 3:46:36 PM (1)



Subject: Engineer
Page Label: [4] 4 Pond DT01
Author: dotprete
Date: 9/2/2022 3:46:36 PM
Status:
Color: ■
Layer:
Space:

is this tying into an existing roadside ditch?