

**STORMWATER MANAGEMENT PLAN (SWMP)
for
MAYBERRY, COLORADO SPRINGS - FILING NO. 1
(formerly known as “Ellicott Town Center”)**

Prepared for:

Colorado Springs Mayberry, LLC
32823 Temecula Parkway
Temecula, CA 92592

April, 2020

Engineering Review

05/22/2020 7:15:59 PM

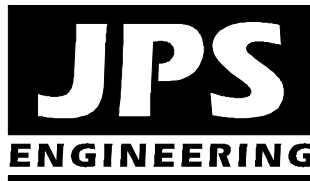
dsdrice

JeffRice@elpasoco.com

(719) 520-7877

**EPC Planning & Community
Development Department**

Prepared by:



**19 East Willamette Avenue
Colorado Springs, CO 80903
(719)-477-9429
www.jpsengr.com**

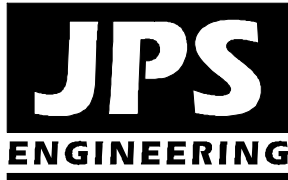
**JPS Project No. 030502
EPC Project No. SF-18-025**

MAYBERRY, COLORADO SPRINGS - FILING NO. 1
STORMWATER MANAGEMENT PLAN (SWMP)
TABLE OF CONTENTS

| | <u>PAGE</u> |
|---|-------------|
| I. QUALIFIED STORMATER MANAGER..... | 1 |
| II. SPILL PREVENTION AND RESPONSE PLAN..... | 1 |
| III. MATERIALS HANDLING | 2 |
| IV. POTENTIAL SOURCES OF POLLUTION | 4 |
| V. IMPLEMENTATION OF CONTROL MEASURES | 5 |
| VI. SITE DESCRIPTION | 7 |
| VII. SITE MAP..... | 7 |
| VIII. FINAL STABILIZATION AND LONG-TERM STORMWATER MANAGEMENT | 8 |
| IX. INSPECTION REPORTS | 8 |

FIGURES

Figure A1 Vicinity Map
 Grading & Erosion Control (GEC) Plans



MAYBERRY, COLORADO SPRINGS - FILING NO. 1
(formerly know as “Ellicott Town Center”)
STORMWATER MANAGEMENT PLAN (SWMP)

September, 2019

I. QUALIFIED STORMWATER MANAGER

A. Qualified Stormwater Manager

Contractor: Colorado Springs Mayberry, LLC
3823 Temecula Parkway
Temecula, CA 92592
Attn: Rick Scott (951) 252-8133
rick@cormanleigh.com

B. Applicant / Contact Information

Owner/Developer: Colorado Springs Mayberry, LLC
3823 Temecula Parkway
Temecula, CA 92592
Attn: Rick Scott (951) 252-8133
rick@cormanleigh.com

Engineer: JPS Engineering, Inc.
19 E. Willamette Avenue
Colorado Springs, CO 80903
Attn: John P. Schwab, P.E. (719)-477-9429
john@jpsengr.com

II. SPILL PREVENTION AND RESPONSE PLAN

A. Spill Prevention and Response Procedures:

- The primary objective in responding to a spill is to quickly contain the material(s) and prevent or minimize their migration into storm water runoff and conveyance systems. If the release has impacted on-site storm water, it is critical to contain the released materials on site and prevent their release into receiving waters.

- Spill Response Procedures:
 - Notify site superintendent immediately when a spill, or the threat of a spill, is observed. The superintendent shall assess the situation and determine the appropriate response.
 - If spills represent an imminent threat of escaping on-site facilities and entering the receiving waters, site personnel shall respond immediately to contain the release and notify the superintendent after the situation has stabilized.
 - The site superintendent, or his designee, shall be responsible for completing a spill reporting form and for reporting the spill to the appropriate agency.
 - Spill response equipment shall be inspected and maintained as necessary to replace any materials used in spill response activities.
- Spill kits shall be on-hand at all fueling sites. Spill kit location(s) shall be reported to the SWMP Administrator.
- Absorbent materials shall be on-hand at all fueling areas for use in containing inadvertent spills. Containers shall be on-hand at all fueling sites for disposal of used absorbents.
- Recommended components of spill kits include the following:
 - Oil absorbent pads (one bale)
 - Oil absorbent booms (40 feet)
 - 55-gallon drums (2)
 - 9-mil plastic bags (10)
 - Personal protective equipment including gloves and goggles
- B. Notification Procedures:
 - In the event of an accident or spill, the SWMP Administrator shall be notified as a minimum.
 - Depending on the nature of the spill material involved, the Colorado Department of Public Health and Environment (24-hour spill reporting line: 877-518-5608), downstream water users, or other agencies may also need to be notified.
 - Any spill of oil which 1) violates water quality standards, 2) produces a “sheen” on a surface water, or 3) causes a sludge or emulsion, or any hazardous substance release, or hazardous waste release which exceeds the reportable quantity, must be reported immediately by telephone to the National Response Center Hotline at (800)-424-8802.

III. MATERIALS HANDLING

- A. General Materials Handling Practices:
 - Potential pollutants shall be stored and used in a manner consistent with the manufacturer’s instructions in a secure location. To the extent practical, material storage areas should not be located near storm drain inlets and should be equipped with covers, roofs, or secondary containment as required to prevent storm water from contacting stored materials.

- Chemicals that are not compatible shall be stored and segregated areas so that spilled materials cannot combine and react.
 - Disposal of materials shall be in accordance with the manufacturer's instructions and applicable local, state, and federal regulations.
 - Materials no longer required for construction shall be removed from the site as soon as possible.
- B. Adequate garbage, construction waste, and sanitary waste handling and disposal facilities shall be provided as necessary to keep the site clear of obstruction and BMPs clear and functional.
- C. Specific Materials Handling Practices:
- All pollutants, including waste materials and demolition debris, that occur on-site during construction shall be handled in a way that does not contaminate storm water.
 - All chemicals including liquid products, petroleum products, water treatment chemicals, and wastes stored on site shall be covered and contained and protected from vandalism.
 - Maintenance and repair of all equipment and vehicles involving oil changes, hydraulic system drain down, de-greasing operations, fuel tank drain down and removal, and other activities which may result in the accidental release of contaminants, shall be conducted under cover during wet weather and on an impervious surface to prevent release of contaminants onto the ground. Materials spilled during maintenance operations shall be cleaned up immediately and properly disposed of.
 - Wheel wash water shall be settled and discharged on site by infiltration. Wheel wash water shall not be discharged to the storm water system.
 - Application of agricultural chemicals, including fertilizers and pesticides, shall be conducted in a manner and at application rates that will not result in loss of chemical to storm water runoff. Follow manufacturer's recommendations for application rates and procedures.
 - pH-modifying sources shall be managed to prevent contamination of runoff and storm water collected on site. The most common sources of pH-modifying materials are bulk cement, cement kiln dust (CKD), fly ash, new concrete washing and curing waters, waste streams generated from concrete grinding and sawing, exposed aggregate processes, and concrete pumping and mixer washout waters.
- D. Equipment maintenance and fueling: Contractor shall implement appropriate spill prevention and response procedures
- E. Concrete Wash Water: Unless confined in a pre-defined, bermed containment area, the cleaning of concrete truck delivery chutes is prohibited at the job site. The discharge of water containing waste cement to the storm drainage system is prohibited.

IV. POTENTIAL SOURCES OF POLLUTION

Potential pollutant sources will be addressed as follows:

POTENTIAL POLLUTION SOURCES

| Potential Pollution Sources | Possible Site Contributions of Pollutants to Stormwater Discharges |
|--|---|
| All disturbed and stored soils | Stockpiles of fill from site excavations, topsoil stockpiles. |
| Vehicle tracking of sediments | See GEC Plans for vehicle entrance and exits. Vehicle tracking control pads will be installed and maintained at all construction access points. |
| Management of contaminated soils | No contaminated soils are expected to be encountered. |
| Loading and unloading operations | Loading and unloading of construction materials |
| Outdoor storage activities (building material, fertilizers, chemicals, etc.) | Stockpiles and equipment storage areas (no fertilizers, petroleum or chemical products will be stored on-site). |
| Vehicle and equipment maintenance and fueling | Fueling will occur on-site using mobile equipment (will not be stored on-site). Equipment maintenance will occur off-site. |
| Significant dust or particulate-generating processes | Vehicle tracking, soil removed from excavation, stockpiles. |
| Routine maintenance activities involving fertilizers, pesticides, detergents, fuels, solvents, oils, etc. | All equipment maintenance will occur off-site. No fertilizers, pesticides, detergents, and/or solvents will be used or stored on-site. |
| On-site waste management practices (waste piles, liquid wastes, dumpsters, etc.) | All waste will be removed from site as soon as possible, and disposed of at a permitted off-site disposal site |
| Concrete truck/equipment washing, including the concrete truck chute and associated fixtures and equipment | Properly contained concrete washout areas may be designated and maintained within the site, based on construction phasing. |
| Dedicated asphalt and concrete batch plants | No dedicated asphalt or concrete batch plants are planned on-site. |
| Non-industrial waste sources such as worker trash and portable toilets | Worker trash will be removed from the site as soon as possible. Portable toilets will be utilized and maintained as required based on construction phasing. |
| Other areas or procedures where potential spills can occur | Petroleum releases from equipment are possible. |

Add locations or note that contractor is required to add the location of any items not specified at this time.

V. IMPLEMENTATION OF CONTROL MEASURES

Narrative Description of Appropriate Stormwater Controls and Measures

Construction Phasing

Phase 1 – Mobilization, Clearing & Grubbing Operations

Clearing and grubbing will be completed prior to initial overlot grading activities for this site. Perimeter control measures will be installed prior to the start of construction operations. These perimeter controls will include silt fencing and a vehicle tracking control pad.

Phase 2 – Earthwork, Road Grading, and Utility Installation

Major earthwork activities will include overlot grading, foundation over-excavation, backfill, and compaction, utility construction, and rough and final grading for site improvements.

Phase 3 – Building Construction and Final Grading Activities

This phase will include final grading of building sites and landscape areas. Appropriate temporary BMP's will be maintained until vegetation is re-established throughout the site.

Phase 4 – Stabilization

All disturbed areas within the project will be revegetated. The specific revegetation requirements will include the following:

- Landscape plantings – per approved landscape plans
- Native seeding – all other disturbed areas

Phase 5 – Removal of Temporary Control Measures

Temporary sediment control measures shall remain in place until vegetation has been adequately established to prevent erosion from storm runoff. Once adequate vegetation has been established, the temporary erosion control measures will be removed and disposed of off-site.

BMP's for Stormwater Pollution Prevention (See GEC Plans):

| <u>Phase</u> | <u>BMP</u> |
|--|------------|
| Clearing and Grubbing necessary for perimeter controls | VTC's |
| Initiation of perimeter controls | Silt Fence |
| Remaining clearing and grubbing | |
| Site Grading | IP / SCL |
| Extended detention basins (sediment ponds during construction) | EDB / SB |
| Stabilization | SM |
| Removal of erosion control measures | |

Proposed Sequence of Major Activities / Timing Schedule

The anticipated start and completion time period of the construction activities is from May, 2020 through December, 2020. The estimated schedule for erosion control activities is as follows:

- Install Initial BMP's: May, 2020
- Site Grading: May, 2020
- Seeding & Mulching: May, 2021
- Final Stabilization: August, 2022

Erosion and Sediment Controls:

- 1) Structural Practices / Control Measures (all structural Control Measures shall conform to ECM / DCM standards and details):
 - a. Silt fence at toe of slope along downstream limits of disturbed areas (see detail on Sh. C1.4)
 - b. Sediment control logs (SCL) along drainage swales
 - c. Inlet protection (IP) at storm inlets (see detail on Sh. C1.4)
 - d. Sediment Basins (SB); (refer to UDFCD standard details)
 - e. Extended Detention Basins (EDB); (see details on Sh. C1.5-C1.6)
- 2) Non-Structural Practices:
 - Preserve existing vegetation beyond limits of work
 - Temporary seeding of areas to remain disturbed for significant periods of time
 - Permanent seeding/mulching (SM) upon completion of rough grading

Other Controls:

- Contractor shall dispose of all waste materials at a permitted off-site disposal site.
- Vehicle tracking pads will be installed at all access points to limit off-site soil tracking.
- Street Sweeping: Contractor shall perform street sweeping following storm events and as required to keep adjoining public streets clean.

Provide the standard sheets for BMPs to meet checklist requirements.

VI. SITE DESCRIPTION

- A. Nature of Construction Activity
 - Mayberry, Colorado Springs (formerly known as “Ellicott Town Center”) Filing No. 1 is a new residential subdivision in eastern El Paso County, Colorado consisting of 98 single-family residential lots on 228.0 acres. The site is located along the south side of State Highway 94 (SH94) between Peyton Highway and Ellicott Highway. Site development activities will include site grading, utilities, roadways, and associated subdivision improvements.
- B. Proposed sequence of major activities:
 - Mobilization / implementation of BMP’s
 - Clearing and grubbing
 - Rough grading
 - Utility installation
 - Final grading
 - Roadway construction and paving
- C. Total site area = 228-acres; Projected disturbed area = 70-acres (approx.)
- D. Soil erosion potential and potential impacts upon discharge:
 - On-site soils are comprised primarily of “Blakeland series” soils, which are characterized as well-drained loamy sand with rapid permeability, slow surface runoff rates, and moderate hazard of erosion (Hydrologic Soils Group A).
 - Potential impacts upon discharge would include sedimentation adversely affecting downstream waterways and habitat.
- E. Existing vegetation on site:
 - Native meadow grasses and trees (approx. 70% coverage, based on site inspection)
- F. Allowable non-stormwater components of discharge: none anticipated
- G. Receiving water: Surface drainage from this site flows southeasterly into the existing downstream grass-lined drainage swales and channels which ultimately flow to Black Squirrel Creek (ultimate receiving water).
- H. Stream Crossings: There are no stream crossings located within the construction site boundary.

VII. SITE MAP

- SWMP Maps are provided on attached GEC Plans – Sheets C1.1-C1.3
- Qualified Stormwater Manager shall update SWMP Maps as required based on field conditions throughout the project.
- Contractor shall update and annotate the SWMP Maps to show the location of the construction trailer, stabilized staging area, CWA, and other items as these locations are determined on site.

VIII. FINAL STABILIZATION AND LONG-TERM STORMWATER MANAGEMENT

- A. Permanent seeding will be provided to achieve long-term stabilization of the site.
- B. Seed Mix: "Foothills Mix" or approved equal
- C. Seeding Application Rate: Drill seed 0.25" to 0.5" into the soil. In small areas not accessible to a drill, hand broadcast at double the rate and rake 0.25" to 0.5" into the soil. Apply seed at the following rates:
 - Dryland: 20-25 lbs/acre
 - Irrigated: 40 lbs/acre
- D. Soil Stabilization Practices:
 - Mulching Application: Apply 1-1/2 tons of certified weed free hay per acre mechanically crimped into the soil in combination with an organic mulch tackifier. On slopes and ditches requiring a blanket, the blanket shall be placed in lieu of mulch and mulch tackifier.
- E. Soil Conditioning and Fertilizer Requirements:
 - Soil conditioner, organic amendment shall be applied to all seeded areas at 3 CY / 1000 SF.
 - Fertilizer shall consist of 90% fungal biomass (mycelium) and 10% potassium-magnesia with a grade of 6-1-3 or approved equal. Fertilizer shall be applied as recommended by seed supplier.
- F. Final stabilization is reached when all soil-disturbing activities at the site have been completed, and uniform vegetative cover has been established with an individual plant density of at least 70 percent of pre-disturbance levels, or equivalent permanent, physical erosion reduction methods have been employed.
- G. Structural Control Measures:
 - Re-Seeding and Landscaping for site stabilization
 - Permanent Stormwater Detention & Water Quality Pond C1
 - Temporary Stormwater Detention & Water Quality Pond C2.8
- H. Non-Structural Control Measures:
 - Proper Housekeeping Procedures
 - Proper Spill Containment Procedures

IX. INSPECTION REPORTS

- A. Qualified Stormwater Manager: Designated Inspector shall be a Qualified Stormwater Manager per CDPHE criteria.
- B. Inspection Frequency:
 - Contractor shall inspect BMPs bi-weekly as a minimum, and immediately (within 24 hours) after any precipitation or snowmelt event that causes surface erosion (i.e. that results in stormwater running across the ground), to ensure that BMPs are maintained in effective operating condition.

C. Inspection Procedures:

Site Inspection / Observation Items:

- Construction site perimeter and discharge points (including discharges into a storm sewer system)
- All disturbed areas
- Areas used for material / waste storage that are exposed to precipitation
- Other areas having a significant potential for stormwater pollution, such as demolition areas or concrete washout locations, or locations where vehicles enter or leave the site
- Erosion and sediment control measures identified in the SWMP
- Any other structural BMPs that may require maintenance, such as secondary containment around fuel tanks, or the condition of spill response kits.

D. Inspection Requirements:

- Determine if there is any evidence of, or potential for, pollutants entering the drainage system.
- Review BMPs to determine if they still meet design and operational criteria in the SWMP, and if they continue to adequately control pollutants at the site.
- Upgrade and/or revise any BMPs not operating in accordance with the SWMP and update the SWMP to reflect any revisions.

BMP Maintenance / Replacement and Failed BMPs:

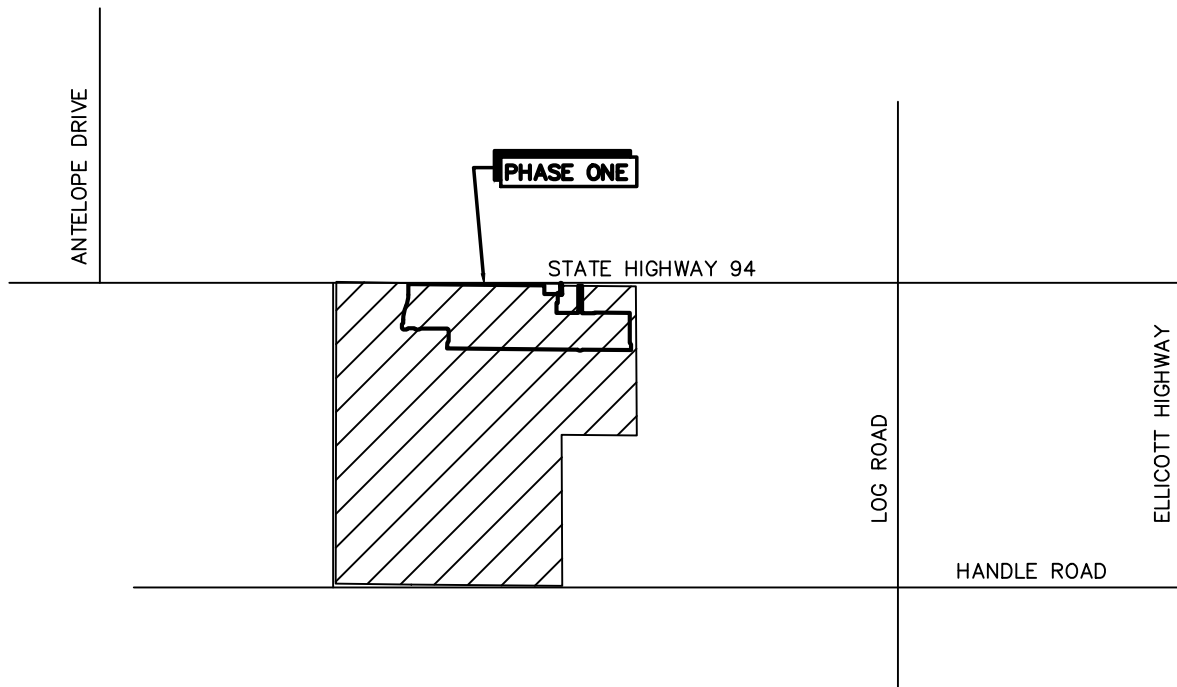
- Contractor shall remove sediment that has been collected by perimeter controls, such as silt fence and inlet protection, on a regular basis to prevent failure of BMPs, and remove potential of sediment from being discharged from the site in the event of BMP failure.
- Removed sediment must be moved to an appropriate location where it will not become an additional pollutant source, and should never be placed in ditches or streams.
- Contractor shall update Erosion Control Plans / SWMP Maps and SWMP Plan as required with any new BMPs added during the construction period.
- Contractor shall address BMPs that have failed or have the potential to fail without maintenance or modifications, as soon as possible, immediately in most cases, to prevent discharge of pollutants.

E. Inspection Reports:

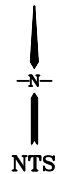
- Contractor shall maintain records of all inspection reports, including signed inspection logs, at the project site. SWMP records shall be located in the project trailer.
- Inspection logs shall be signed by the Qualified Stormwater Manager.
- Permittee shall document inspection results and maintain a record of the results for a period of 3 years following expiration or inactivation of permit coverage.

- Site inspection records shall include the following:
 - Inspection date
 - Name and title of personnel making the inspection, along with Inspector's signature
 - Location of discharges of sediment or other pollutants from the site
 - Location(s) of BMPs that need to be maintained
 - Location(s) of BMPs that failed to operate as designed or proved inadequate for a particular location
 - Location(s) where additional BMPs are needed that were not in place at the time of inspection
 - Deviations from the minimum inspection schedule
 - Notations regarding updates and revisions to SWMP Maps based on field conditions

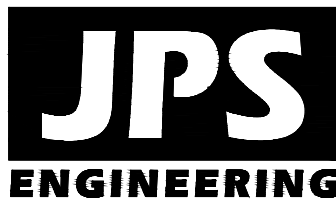
J:\jpsprojects\090001.Ellicott\TC\dwg\Civil\A1.dwg Aug 26, 2018 - 2:59pm



VICINITY MAP
NTS



VICINITY
MAP



ELLICOTT
TOWN CENTER

FIGURE A1
JPS PROJ NO. 090001

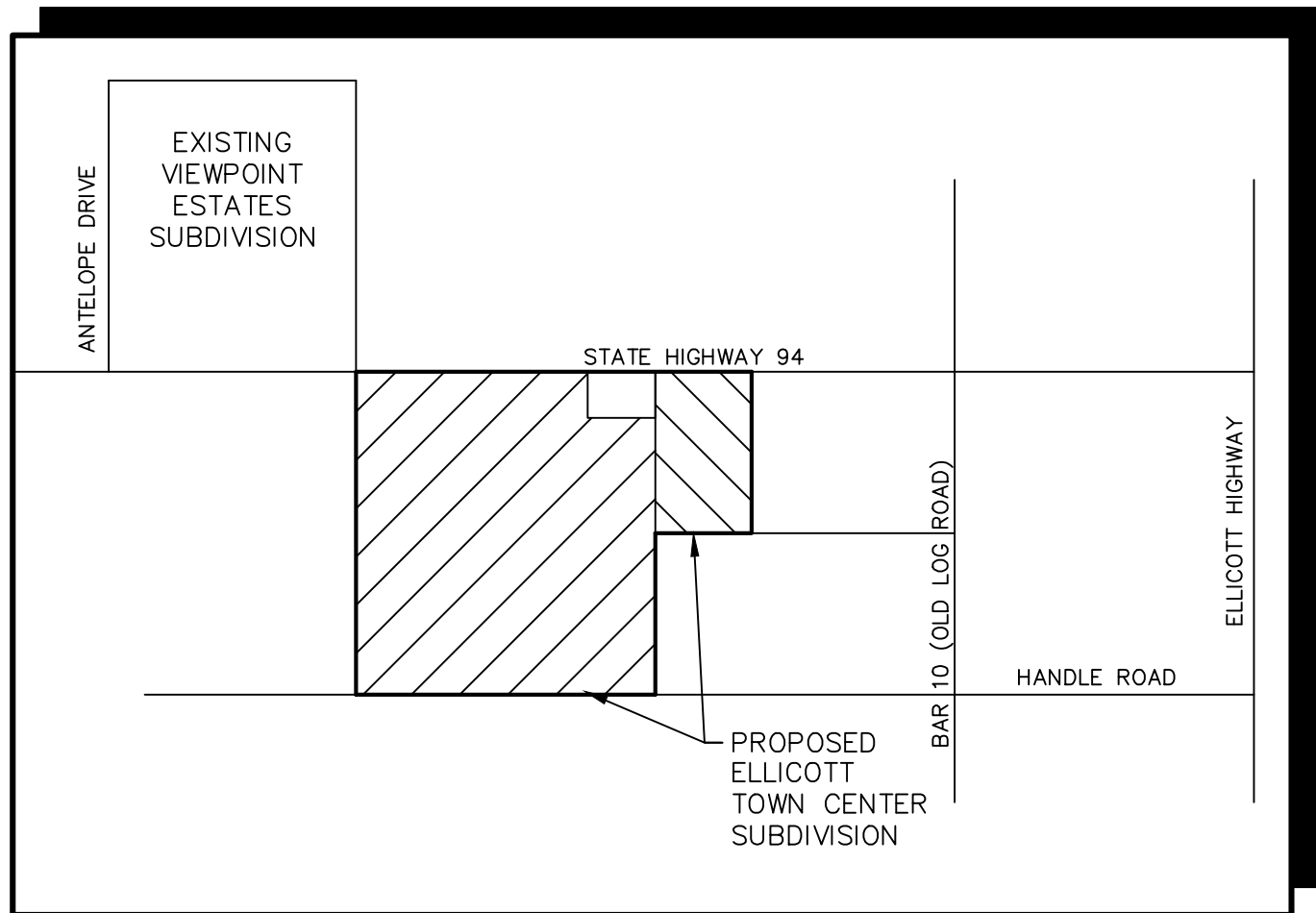
Mayberry, Colorado Springs

Filing No. 1

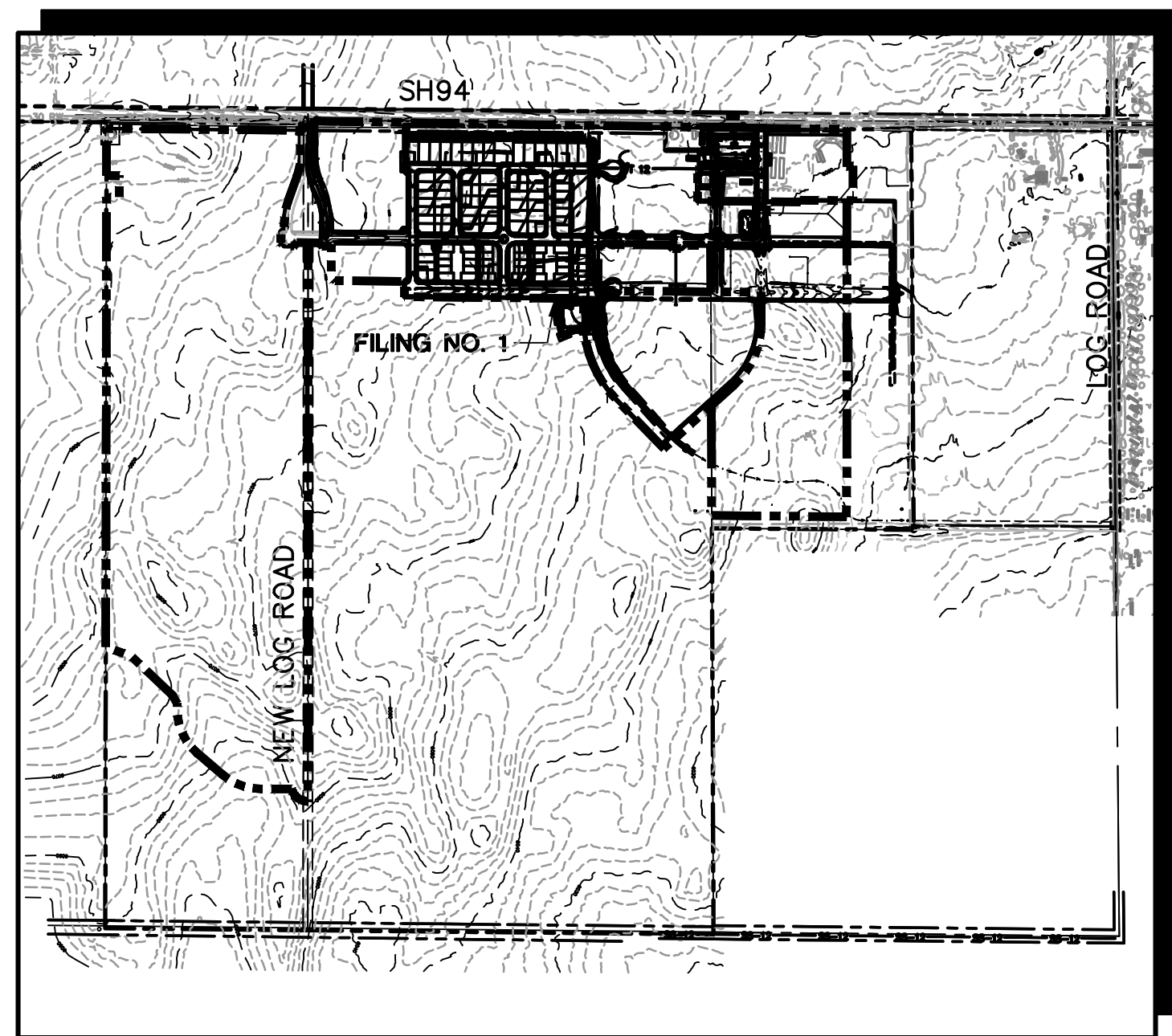
Grading & Erosion Control Plans

El Paso County, Colorado

CALL UTILITY NOTIFICATION
CENTER OF COLORADO
1-800-922-1987
CALL 2-BUSINESS DAYS IN ADVANCE
BEFORE YOU DIG, GRADE, OR EXCAVATE
FOR THE MARKING OF UNDERGROUND
MEMBER UTILITIES.



VICINITY MAP
NOT TO SCALE

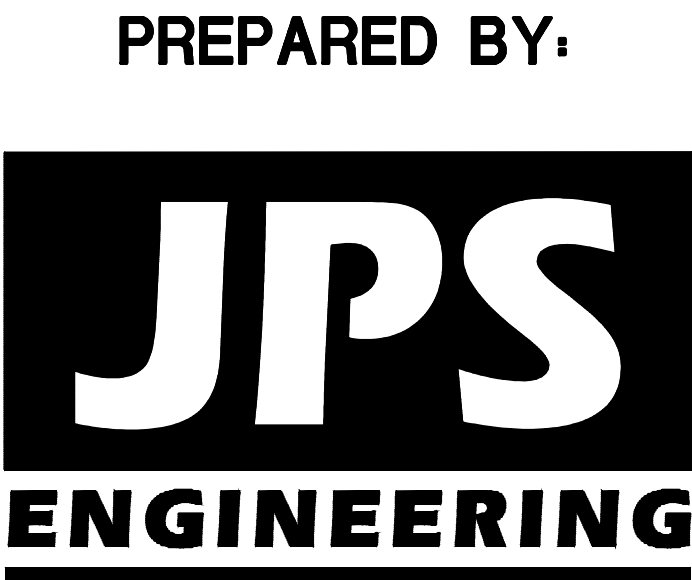


SITE MAP
NOT TO SCALE

BENCHMARK:
A # 5 REBAR LOCATED AT THE NORTH 1/4 CORNER OF SECTION 14. AIR PHOTO PANEL NEAR NORTH 1/4 CORNER, SECTION 14 NO. 5 REBAR EL=6058.55.

BASIS OF BEARINGS:
THE BASIS OF BEARING FOR THIS SURVEY IS THE NORTH LINE OF SECTION 14, T.14S., R.63W. ASSUMED AS S 89-44-49 E FROM REBAR & 3-1/2" ALUM. CAP NW CORNER SEC 14, T14S, R63W TO REBAR & 2" ALUM. CAP IN RANGE BOX, N 1/4 CORNER SEC. 14.

PREPARED FOR:
Colorado Springs Mayberry, LLC
32823 Temecula Parkway
Temecula, CA 92592



PREPARED BY:
19 East Willamette Avenue
Colorado Springs, Colorado 80903
April, 2020

AGENCIES/CONTACTS

| | | | |
|---------------------|--|----------------------|---|
| DEVELOPER: | COLORADO SPRINGS MAYBERRY, LLC 32823 TEMECULA PARKWAY TEMECULA, CA 92592 MR. RANDY GOODSON (858) 692-6262 | WATER/WASTEWATER: | ELLCOTT UTILITIES COMPANY, LLC MR. RANDY GOODSON (858) 692-6262 |
| CIVIL ENGINEER: | JPS ENGINEERING, INC. 19 E. WILLAMETTE AVENUE COLORADO SPRINGS, CO 80903 MR. JOHN P. SCHWAB, P.E. (719)477-9429 | GAS DEPARTMENT: | BLACK HILLS ENERGY MR. SEBASTIAN SCHWENDER (719) 359-3176 |
| SURVEYOR: | RAMPART SURVEYS P.O. BOX 5101 WOODLAND PARK, CO 80866 MR. KEVIN LLOYD, PLS (719) 687-0920 | ELECTRIC DEPARTMENT: | MOUNTAIN VIEW ELECTRIC ASSOCIATION 11140 E. WOODMEN ROAD COLORADO SPRINGS, CO 80908 MR. DAVE WALDNER (719)495-2283 |
| COUNTY ENGINEERING: | EL PASO COUNTY DEVELOPMENT SERVICES 2880 INTERNATIONAL CIRCLE COLORADO SPRINGS, CO 80922 MR. JEFF RICE, P.E. (719) 520-7877 | TELEPHONE COMPANY: | QWEST COMMUNICATIONS (LOCATORS) (800)922-1987 A.T. & T. (LOCATORS) (719)635-3674 |
| STATE HIGHWAY | COLORADO DEPARTMENT OF TRANSPORTATION REGION 2 5615 WILLS BLVD. PUEBLO, CO 81008 MS. VALERIE SWORD (719)546-5407 | | |

SHEET INDEX

| | |
|-------|--|
| G1 | TITLE SHEET/VICINITY MAP/LOCATION MAP |
| G2 | GENERAL NOTES & LEGEND |
| C1 | OVERALL SITE PLAN & GENERAL NOTES |
| C1.1 | MASTER GRADING PLAN |
| C1.2 | FILING 1 GRADING & EROSION CONTROL PLAN |
| C1.3 | EAST SITE GRADING & EROSION CONTROL PLAN |
| C1.4A | EROSION CONTROL NOTES |
| C1.4B | EROSION CONTROL DETAILS |
| C1.5 | DETENTION POND C1 PLAN & DETAILS |
| C1.6 | DETENTION POND C2.8 PLAN & DETAILS |
| C2.1 | LOT GRADING NOTES & DETAILS |
| CH1 | CHANNEL C1 PLAN & PROFILE |
| CH2 | CHANNEL C4 PLAN & PROFILE |

ENGINEER'S STATEMENT:

THIS GRADING AND EROSION CONTROL PLAN WAS PREPARED UNDER MY DIRECTION AND SUPERVISION AND IS CORRECT TO THE BEST OF MY KNOWLEDGE AND BELIEF. SAID PLAN HAS BEEN PREPARED ACCORDING TO THE CRITERIA ESTABLISHED BY THE COUNTY FOR GRADING AND EROSION CONTROL PLANS. I ACCEPT RESPONSIBILITY FOR LIABILITY CAUSED BY NEGLIGENT ACTS, ERRORS OR OMISSIONS ON MY PART IN PREPARING THIS PLAN.

ENGINEER OF RECORD SIGNATURE _____ DATE _____

OWNER'S STATEMENT:

I, THE OWNER/DEVELOPER HAVE READ AND WILL COMPLY WITH THE REQUIREMENTS OF THE GRADING AND EROSION CONTROL PLAN.

OWNER SIGNATURE _____ DATE _____

COUNTY:

COUNTY PLAN REVIEW IS PROVIDED ONLY FOR GENERAL CONFORMANCE WITH COUNTY DESIGN CRITERIA. THE COUNTY IS NOT RESPONSIBLE FOR THE ACCURACY AND ADEQUACY OF THE DESIGN, DIMENSIONS, AND/OR ELEVATIONS WHICH SHALL BE CONFIRMED AT THE JOB SITE. THE COUNTY THROUGH THE APPROVAL OF THIS DOCUMENT ASSUMES NO RESPONSIBILITY FOR COMPLETENESS AND/OR ACCURACY OF THIS DOCUMENT.

FILED IN ACCORDANCE WITH THE REQUIREMENTS OF THE EL PASO COUNTY LAND DEVELOPMENT CODE, DRAINAGE CRITERIA MANUAL VOLUMES 1 AND 2, AND ENGINEERING CRITERIA MANUAL AS AMENDED.

IN ACCORDANCE WITH ECM SECTION 1.12, THESE CONSTRUCTION DOCUMENTS WILL BE VALID FOR CONSTRUCTION FOR A PERIOD OF 2 YEARS FROM THE DATE SIGNED BY THE EL PASO COUNTY ENGINEER. IF CONSTRUCTION HAS NOT STARTED WITHIN THOSE 2 YEARS THE PLANS WILL NEED TO BE RESUBMITTED FOR APPROVAL, INCLUDING PAYMENT OF REVIEW FEES AT THE PLANNING AND COMMUNITY DEVELOPMENT DIRECTOR'S DISCRETION.

COUNTY ENGINEER/ECM ADMINISTRATOR _____ DATE _____

C:\Users\Owner\Dropbox\jsprojects\090001.EllicottTC\dwg\Civil\GEC\G2.DWG Apr 17, 2020 - 1:05pm

1. INDIVIDUAL BUILDERS SHALL PROVIDE POSITIVE DRAINAGE AWAY FROM STRUCTURES AND ACCOUNT FOR POTENTIAL CROSS-LOT DRAINAGE IMPACTS WITHIN EACH LOT.
2. BUILDERS AND PROPERTY OWNERS SHALL IMPLEMENT & MAINTAIN EROSION CONTROL BEST MANAGEMENT PRACTICES FOR PROTECTION OF DOWNSTREAM PROPERTIES AND FACTORS INCLUDING PROTECTION OF EXISTING GRASS BUFFER STRIPS ALONG THE DOWNSTREAM PROPERTY BOUNDARIES.
3. GRADING AND DRAINAGE WITHIN LOTS IS THE RESPONSIBILITY OF THE INDIVIDUAL BUILDERS AND PROPERTY OWNERS.

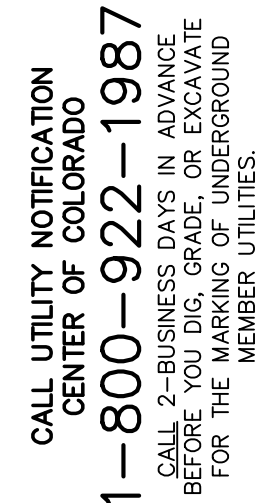
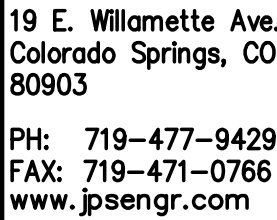
1. ALL SIGNS AND PAVEMENT MARKINGS SHALL BE IN COMPLIANCE WITH THE CURRENT MANUAL ON UNIFORM TRAFFIC CONTROL DEVICES (MUTCD).
2. REMOVAL OF EXISTING PAVEMENT MARKINGS SHALL BE ACCOMPLISHED BY A METHOD THAT DOES NOT MATERIALLY DAMAGE THE PAVEMENT. THE PAVEMENT MARKINGS SHALL BE REMOVED TO THE EXTENT THAT THEY WILL NOT BE VISIBLE UNDER DAY OR NIGHT CONDITIONS. AT NO TIME WILL IT BE ACCEPTABLE TO PAINT OVER EXISTING PAVEMENT MARKINGS.
3. ANY DEVIATION FROM THE STRIPING AND SIGNING PLAN SHALL BE APPROVED BY EL PASO COUNTY DEPARTMENT OF PUBLIC WORKS.
4. ALL SIGNS SHOWN ON THE SIGNING AND STRIPING PLAN SHALL BE NEW SIGNS. EXISTING SIGNS MAY REMAIN OR BE REUSED IF THEY MEET CURRENT EL PASO COUNTY AND MUTCD STANDARDS.
5. STREET NAME AND REGULATORY STOP SIGNS SHALL BE ON THE SAME POST AT INTERSECTIONS.
6. ALL REMOVED SIGNS SHALL BE DISPOSED OF IN A PROPER MANNER BY THE CONTRACTOR.
7. ALL STREET NAME SIGNS SHALL HAVE "D" SERIES LETTERS, WITH LOCAL ROADWAY SIGNS BEING 4" UPPER-LOWER CASE LETTERING ON 8" BLANK AND NON-LOCAL ROADWAY SIGNS BEING 6" LETTERING, UPPER-LOWER CASE ON 12" BLANK, WITH WHITE BORDER THAT IS NOT RECESSED. MULTI-LANE ROADWAYS WITH SPEED LIMITS OF 40 MPH OR HIGHER SHALL HAVE 8" UPPER-LOWER CASE LETTERING ON 18" BLANK WITH A WHITE BORDER THAT IS NOT RECESSED. THE WIDTH OF THE NON-RECESSED WHITE BORDERS SHALL MATCH PAGE 255 OF THE 2012 MUTCD "STANDARD HIGHWAY SIGNS".
8. ALL TRAFFIC SIGNS SHALL HAVE A MINIMUM HIGH INTENSITY PRISMATIC GRADE SHEETING.
9. ALL LOCAL RESIDENTIAL STREET SIGNS SHALL BE MOUNTED ON A 1.75" X 1.75" SQUARE TUBE SIGN POST AND STUB POST BASE. FOR OTHER APPLICATIONS, REFER TO THE CDOT STANDARD S-614-8 REGARDING USE OF THE P2 TUBULAR STEEL POST SLIPBASE DESIGN.
10. ALL SIGNS SHALL BE SINGLE SHEET ALUMINUM WITH 0.100" MINIMUM THICKNESS.
11. ALL LIMIT LINES/STOP LINES, CROSSWALK LINES, PAVEMENT LEGENDS, AND ARROWS SHALL BE A MINIMUM 125 MIL THICKNESS PREFORMED THERMOPLASTIC PAVEMENT MARKINGS WITH TAPERED LEADING EDGES PER CDOT STANDARD S-627-1. WORD AND SYMBOL MARKINGS SHALL BE THE NARROW TYPE. STOP BARS SHALL BE 24" IN WIDTH. CROSSWALKS LINES SHALL BE 12" WIDE AND 8' LONG PER CDOT S-627-1.
12. ALL LONGITUDINAL LINES SHALL BE A MINIMUM 15MIL THICKNESS EPOXY PAINT. ALL NON-LOCAL RESIDENTIAL ROADWAYS SHALL INCLUDE BOTH RIGHT AND LEFT EDGE LINE STRIPING AND ANY ADDITIONAL STRIPING AS REQUIRED BY CDOT S-627-1.
13. THE CONTRACTOR SHALL NOTIFY EL PASO COUNTY DEPARTMENT OF PUBLIC WORKS (719) 520-6819 PRIOR TO AND UPON COMPLETION OF SIGNING AND STRIPING.
14. THE CONTRACTOR SHALL OBTAIN A WORK IN THE RIGHT OF WAY PERMIT FROM THE EL PASO COUNTY PUBLIC WORKS DEPARTMENT PRIOR TO ANY SIGNAGE OR STRIPING WORK WITHIN AN EXISTING EL PASO COUNTY ROADWAY.

- CONSTRUCTION. LOCATION OF EXISTING UTILITIES SHALL BE VERIFIED BY THE CONTRACTOR PRIOR TO ACTUAL CONSTRUCTION.
2. EXISTING CONTOUR DATA PROVIDED BY OWNER GENERALLY CONSISTS OF AERIAL MAPPING FROM UNITED PLANNING & ENGINEERING. JPS ENGINEERING TAKES NO RESPONSIBILITY FOR THE ACCURACY OF EXISTING TOPOGRAPHIC MAPPING.
3. THE CONTRACTOR SHALL HAVE ONE (1) SIGNED COPY OF THESE APPROVED PLANS AND ONE (1) COPY OF THE APPROPRIATE DESIGN AND CONSTRUCTION STANDARDS AND SPECIFICATIONS AT THE JOB SITE AT ALL TIMES:
 - A. EL PASO COUNTY ENGINEERING CRITERIA MANUAL
 - B. CDOT STANDARD SPECIFICATIONS FOR ROAD & BRIDGE CONSTRUCTION
 - C. ELLICOTT UTILITIES STANDARDS SPECIFICATIONS (REFER TO CSU STANDARDS IN THE ABSENCE OF PUBLISHED SPECIFICATIONS)
4. STORM DRAIN PIPE SHALL BE RCP CLASS III WITH CLASS C BEDDING UNLESS OTHERWISE NOTED. PROVIDE WATER-TIGHT JOINTS ON STORM SEWER PIPE.
5. STATIONING IS AT CENTERLINE UNLESS OTHERWISE NOTED. ALL ELEVATIONS ARE AT FLOWLINE UNLESS OTHERWISE NOTED. ALL DIMENSIONS ARE FROM FACE OF CURB UNLESS OTHERWISE NOTED.
6. PROPOSED CONTOURS SHOWN ARE TO FINISHED GRADE.
7. LENGTHS SHOWN FOR STORM SEWER PIPES ARE TO CENTER OF MANHOLE.
8. CONTRACTOR SHALL REMOVE AND DISPOSE OF ALL EXISTING STRUCTURES, DEBRIS, WASTE AND OTHER UNSUITABLE FILL MATERIAL FOUND WITHIN THE LIMITS OF EXCAVATION.
9. MATCH INTO EXISTING GRADES AT 3:1 MAX CUT AND FILL SLOPES.
10. REVEGETATION OF ALL DISTURBED AREAS SHALL BE DONE WITH SPECIFIED SEED MIX WITHIN 30 DAYS AFTER FINE GRADING IS COMPLETE.
11. EROSION CONTROL SHALL CONSIST OF SILT FENCE AND OTHER BMP'S AS SHOWN ON THE DRAWINGS, AND TOPSOIL WITH GRASS SEED, WHICH WILL BE WATERED UNTIL VEGETATION HAS BEEN REESTABLISHED.
12. THE EROSION CONTROL MEASURES OUTLINED ON THIS PLAN ARE THE RESPONSIBILITY OF THE DEVELOPER TO MONITOR AND REPLACE, REGRADE, AND REBUILD AS NECESSARY UNTIL VEGETATION IS REESTABLISHED.
13. EROSION CONTROL MEASURES SHALL BE IMPLEMENTED IN A MANNER THAT WILL PROTECT ADJACENT PROPERTIES AND PUBLIC FACILITIES FROM THE ADVERSE EFFECTS OF EROSION AND SEDIMENTATION AS A RESULT OF CONSTRUCTION AND EARTHWORK ACTIVITIES WITHIN THE PROJECT SITE.
14. ADDITIONAL EROSION CONTROL MEASURES MAY BE REQUIRED AS DETERMINED BY SITE CONDITIONS.
15. THE CONTRACTOR WILL TAKE THE NECESSARY PRECAUTIONS TO PROTECT EXISTING UTILITIES FROM DAMAGE DUE TO THIS OPERATION. ANY DAMAGE TO THE UTILITIES WILL BE REPAIRED AT THE CONTRACTOR'S EXPENSE, AND ANY SERVICE DISRUPTION WILL BE SETTLED BY THE CONTRACTOR
16. PEDESTRIAN RAMPS SHALL BE INSTALLED AT ALL INTERSECTIONS AND CONFORM TO COUNTY ENGINEERING STANDARDS AND SPECIFICATIONS.
17. ALL FINISHED GRADES SHALL HAVE A MINIMUM 0.5% SLOPE TO PROVIDE POSITIVE DRAINAGE.
18. WHERE PROPOSED SLOPES CONFLICT WITH PROPOSED SPOT ELEVATIONS, SPOT ELEVATIONS SHALL GOVERN.
19. CONTRACTOR SHALL OBTAIN ALL REQUIRED PERMITS PRIOR TO BEGINNING WORK.
20. ALL RESIDENTIAL STREET CURB RETURN RADII ARE 20- FEET AT FLOWLINE UNLESS OTHERWISE NOTED. ARTERIAL STREET CURB RETURN RADII ARE 35' UNLESS NOTED OTHERWISE.
21. 25-FOOT SIGHT VISIBILITY TRIANGLES SHALL BE PROVIDED AT ALL RESIDENTIAL STREET INTERSECTIONS. 50-FOOT SIGHT TRIANGLES SHALL BE PROVIDED AT ARTERIAL STREET INTERSECTIONS. NO OBSTRUCTIONS TALLER THAN 18" ARE PERMITTED WITHIN THESE TRIANGLES.
22. CONTRACTOR SHALL SCHEDULE A PRE-CONSTRUCTION MEETING WITH EL PASO COUNTY AND ALL UTILITIES INVOLVED IN PROJECT PRIOR TO MOBILIZING ON SITE.
23. TYPE C STORM INLETS SHALL HAVE CLOSE-MESH GRATES.
24. PROVIDE 10' TRANSITION FROM RAMP CURB TO VERTICAL CURB ON EACH SIDE OF STORM INLETS.
25. ALL BACKFILL, SUB-BASE, AND/OR BASE COURSE MATERIAL SHALL BE COMPACTED PER EL PASO COUNTY AND CDOT STANDARDS AND SPECIFICATIONS AND PROJECT GEOTECHNICAL REPORT. CONTRACTOR SHALL STABILIZE ALL SUBGRADE AREAS PER GEOTECHNICAL ENGINEER'S RECOMMENDATIONS.

1. PRELIMINARY PLAN WAS APPROVED WITH 2004 VERSION OF ECM.

The diagram shows a horizontal line representing a section line. On the left side, there is a small black triangle. On the right side, there is a larger black triangle. A circle is drawn around the intersection of the line and the right triangle. Inside the circle, the number '1' is written above the letters 'P1'. Two arrows point from the text labels to the circle: one from 'SECTION NUMBER' and one from 'SHEET ON WHICH SECTION IS SHOWN'.

MAYBERRY, COLORADO SPRINGS - FILING NO. 1



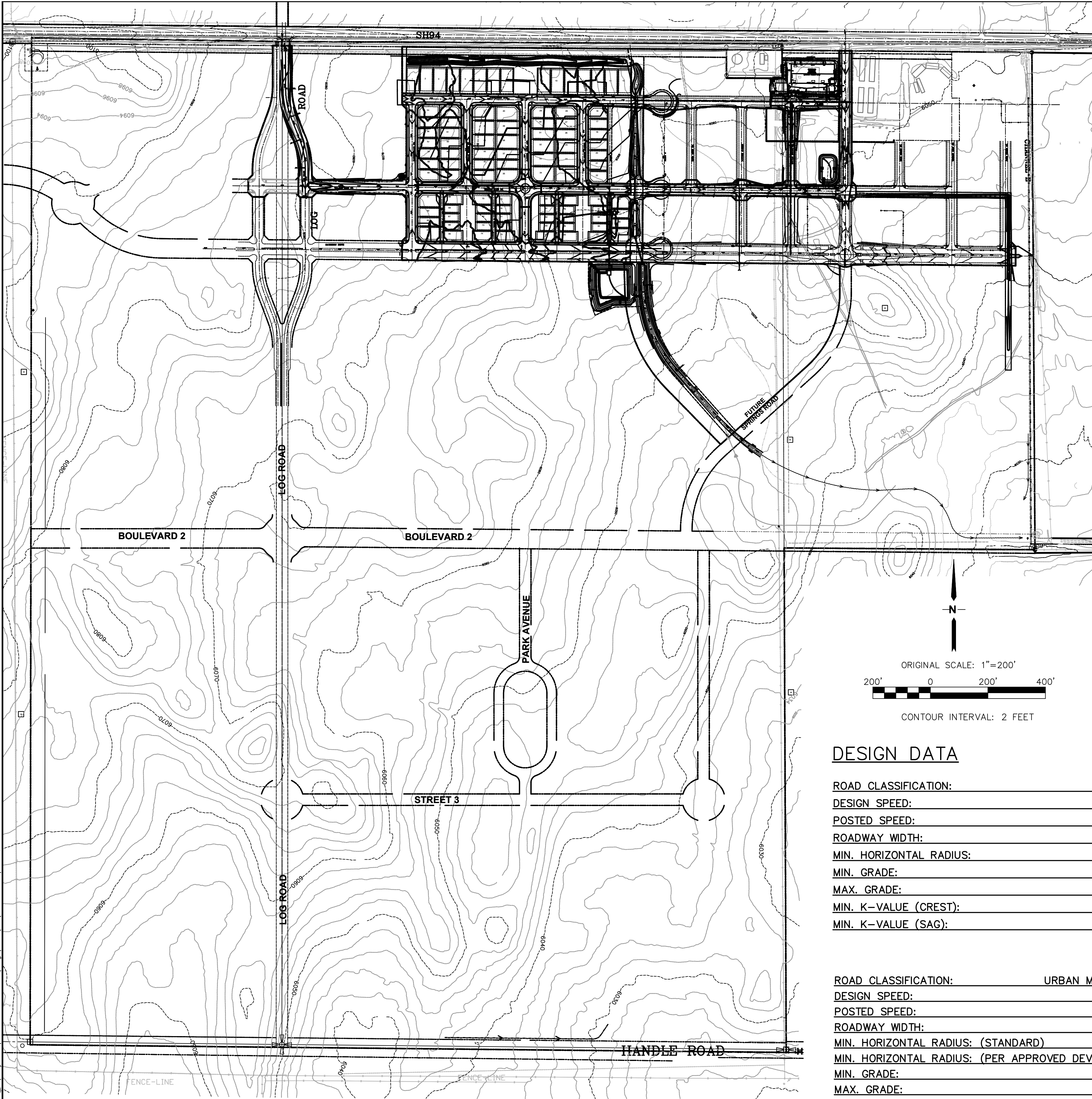
| No. | REVISION | BY | DATE |
|----------|----------------|-----|---------|
| A | 2018 SUBMITTAL | JPS | 8/22/18 |
| B | EPC COMMENTS | JPS | 1/15/19 |
| C | EPC COMMENTS | JPS | 9/12/19 |
| D | EPC COMMENTS | JPS | 1/31/20 |
| E | EPC COMMENTS | JPS | 4/17/20 |

GENERAL NOTES

| | | | |
|--------------|---------|----------------|---------|
| HORZ. SCALE: | 1"=200' | DRAWN: | RMD |
| VERT. SCALE: | N/A | DESIGNED: | JPS |
| SURVEYED: | UP&E | CHECKED: | JPS |
| CREATED: | 1/11/19 | LAST MODIFIED: | 4/17/20 |
| PROJECT NO: | 090001 | MODIFIED BY: | BJJ |

G2

C:\Users\Owner\Dropbox\psprojects\090001\Elliot110.dwg\Civil\FT\C1.DWG Apr 23, 2020 -- 8:43am



DESIGN DATA

| | |
|-------------------------|-------------|
| ROAD CLASSIFICATION: | URBAN/LOCAL |
| DESIGN SPEED: | 25 MPH |
| POSTED SPEED: | 25 MPH |
| ROADWAY WIDTH: | 30' |
| MIN. HORIZONTAL RADIUS: | 200' |
| MIN. GRADE: | 0.5% |
| MAX. GRADE: | 8.0% |
| MIN. K-VALUE (CREST): | 12 |
| MIN. K-VALUE (SAG): | 26 |

| | |
|--|----------------------|
| ROAD CLASSIFICATION: | URBAN MINOR ARTERIAL |
| DESIGN SPEED: | 40 MPH |
| POSTED SPEED: | 35 MPH |
| ROADWAY WIDTH: | 24' EACH SIDE* |
| MIN. HORIZONTAL RADIUS: (STANDARD) | 565' |
| MIN. HORIZONTAL RADIUS: (PER APPROVED DEVIATION) | 400* |
| MIN. GRADE: | 0.5% |
| MAX. GRADE: | 6.0% |
| MIN. K-VALUE (CREST): | 44 |
| MIN. K-VALUE (SAG): | 64 |

PREVIOUSLY APPROVED DEVIATION*

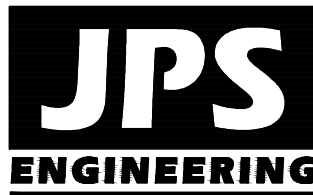
GENERAL NOTES:

1. NOTWITHSTANDING ANYTHING DEPICTED IN THESE PLANS IN WORDS OR GRAPHIC REPRESENTATION, ALL DESIGN AND CONSTRUCTION RELATED TO ROADS, STORM DRAINAGE AND EROSION CONTROL SHALL CONFORM TO THE STANDARDS AND REQUIREMENTS OF THE MOST RECENT VERSION OF THE RELEVANT ADOPTED EL PASO COUNTY STANDARDS, INCLUDING THE LAND DEVELOPMENT CODE, THE ENGINEERING CRITERIA MANUAL, THE DRAINAGE CRITERIA MANUAL, AND THE DRAINAGE CRITERIA MANUAL VOLUME 2. ANY DEVIATIONS TO REGULATIONS AND STANDARDS MUST BE REQUESTED, AND APPROVED, IN WRITING TO BE ACCEPTABLE.
2. THE CONTRACTOR SHALL BE RESPONSIBLE FOR THE NOTIFICATION AND FIELD LOCATION OF ALL EXISTING UTILITIES, WHETHER SHOWN ON THE PLANS OR NOT, BEFORE BEGINNING CONSTRUCTION. LOCATION OF EXISTING UTILITIES SHALL BE VERIFIED BY THE CONTRACTOR PRIOR TO ACTUAL CONSTRUCTION.
3. EXISTING CONTOUR DATA PROVIDED BY OWNER GENERALLY CONSISTS OF CSU FIMS MAPPING SUPPLEMENTED BY LIMITED FIELD SURVEY. JPS ENGINEERING TAKES NO RESPONSIBILITY FOR THE ACCURACY OF EXISTING TOPOGRAPHIC MAPPING.
4. THE CONTRACTOR SHALL HAVE ONE (1) SIGNED COPY OF THESE APPROVED PLANS AND ONE (1) COPY OF THE APPROPRIATE DESIGN AND CONSTRUCTION STANDARDS AND SPECIFICATIONS AT THE JOB SITE AT ALL TIMES:
 - A. EL PASO COUNTY ENGINEERING CRITERIA MANUAL (ECM, 2006 VERSION)
 - B. CDOT STANDARD SPECIFICATIONS FOR ROAD & BRIDGE CONSTRUCTION
 - C. PUBLIC UTILITY DESIGN AND CONSTRUCTION SPECIFICATIONS OF THE DONALA WATER AND SANITATION DISTRICT
5. STORM DRAIN PIPE SHALL BE RCP CLASS III WITH CLASS C BEDDING UNLESS OTHERWISE NOTED.
6. STATIONING IS AT CENTERLINE UNLESS OTHERWISE NOTED. ALL ELEVATIONS ARE AT FLOWLINE UNLESS OTHERWISE NOTED. ALL DIMENSIONS ARE FROM FACE OF CURB UNLESS OTHERWISE NOTED.
7. PROPOSED CONTOURS SHOWN ARE TO FINISHED GRADE.
8. LENGTHS SHOWN FOR STORM SEWER PIPES ARE TO CENTER OF MANHOLE.
9. CONTRACTOR SHALL REMOVE AND DISPOSE OF ALL EXISTING STRUCTURES, DEBRIS, WASTE AND OTHER UNSUITABLE FILL MATERIAL FOUND WITHIN THE LIMITS OF EXCAVATION.
10. MATCH INTO EXISTING GRADES AT 3:1 MAX CUT AND FILL SLOPES.
11. REVEGETATION OF ALL DISTURBED AREAS SHALL BE DONE WITH SPECIFIED SEED MIX WITHIN 30 DAYS AFTER FINE GRADING IS COMPLETE.
12. THE EROSION CONTROL MEASURES OUTLINED ON THIS PLAN ARE THE RESPONSIBILITY OF THE DEVELOPER TO MONITOR AND REPLACE, REGRADE, AND REBUILD AS NECESSARY UNTIL VEGETATION IS REESTABLISHED.
13. EROSION CONTROL MEASURES SHALL BE IMPLEMENTED IN A MANNER THAT WILL PROTECT ADJACENT PROPERTIES AND PUBLIC FACILITIES FROM THE ADVERSE EFFECTS OF EROSION AND SEDIMENTATION AS A RESULT OF CONSTRUCTION AND EARTHWORK ACTIVITIES WITHIN THE PROJECT SITE.
14. ADDITIONAL EROSION CONTROL MEASURES MAY BE REQUIRED AS DETERMINED BY SITE CONDITIONS.
15. THE CONTRACTOR WILL TAKE THE NECESSARY PRECAUTIONS TO PROTECT EXISTING UTILITIES FROM DAMAGE DUE TO THIS OPERATION. ANY DAMAGE TO THE UTILITIES WILL BE REPAIRED AT THE CONTRACTOR'S EXPENSE, AND ANY SERVICE DISRUPTION WILL BE SETTLED BY THE CONTRACTOR
16. PEDESTRIAN RAMPS SHALL BE INSTALLED AT ALL INTERSECTIONS AND CONFORM TO EL PASO COUNTY ENGINEERING STANDARDS AND SPECIFICATIONS.
17. ALL FINISHED GRADES SHALL HAVE A MINIMUM 0.5% SLOPE TO PROVIDE POSITIVE DRAINAGE.
18. WHERE PROPOSED SLOPES CONFLICT WITH PROPOSED SPOT ELEVATIONS, SPOT ELEVATIONS SHALL GOVERN.
19. CONTRACTOR SHALL OBTAIN ALL REQUIRED PERMITS PRIOR TO BEGINNING WORK.
20. ALL RESIDENTIAL STREET CURB RETURN RADII ARE 20- FEET AT FLOWLINE UNLESS OTHERWISE NOTED. ARTERIAL STREET CURB RETURN RADII ARE 35' UNLESS NOTED OTHERWISE.
21. 25-FOOT SIGHT VISIBILITY TRIANGLES SHALL BE PROVIDED AT ALL RESIDENTIAL STREET INTERSECTIONS. 50-FOOT SIGHT TRIANGLES SHALL BE PROVIDED AT ARTERIAL STREET INTERSECTIONS. NO OBSTRUCTIONS TALLER THAN 18" ARE PERMITTED WITHIN THESE TRIANGLES.
22. ELECTRONIC FILE OF SITE DRAWING IS AVAILABLE FROM ENGINEER FOR CONSTRUCTION STAKING PURPOSES.
23. CONTRACTOR SHALL SCHEDULE A PRE-CONSTRUCTION MEETING WITH EL PASO COUNTY AND ALL UTILITIES INVOLVED IN PROJECT PRIOR TO MOBILIZING ON SITE.
24. CONTRACTOR SHALL COMPLY WITH ALL PROVISIONS OF APPROVED HABITAT CONSERVATION PLAN AND 404 PERMIT. CONTRACTOR SHALL HAVE COPIES OF ALL REQUIRED PERMITS AT JOB SITE AT ALL TIMES.
25. TYPE C STORM INLETS SHALL HAVE CLOSE-MESH GRATES.
26. PROVIDE 10' TRANSITION FROM RAMP CURB TO VERTICAL CURB ON EACH SIDE OF STORM INLETS.
27. ALL BACKFILL, SUB-BASE, AND/OR BASE COURSE MATERIAL SHALL BE COMPACTED PER EL PASO COUNTY AND CDOT STANDARDS AND SPECIFICATIONS. CONTRACTOR SHALL STABILIZE ALL SUBGRADE AREAS PER GEOTECHNICAL ENGINEER'S RECOMMENDATIONS.

APPROVAL NOTES:

1. PRELIMINARY PLAN WAS APPROVED WITH 2004 VERSION OF ECM.
2. REFER TO FILE FOR APPROVED DEVIATIONS.

MAYBERRY, COLORADO SPRINGS - FILING NO. 1



19 E. Willamette Ave.
Colorado Springs, CO
80903
PH: 719-477-9429
FAX: 719-471-0766
www.jpseng.com



CALL UTILITY NOTIFICATION
CENTER OF COLORADO
1-800-922-1987
CALL 48 HOURS BEFORE ANY
EXCAVATION OR GRADE
BEFORE YOU DIG, GRADE, OR EXCAVATE
FOR THE MARKING OF UNDERGROUND
MEMBER UTILITIES

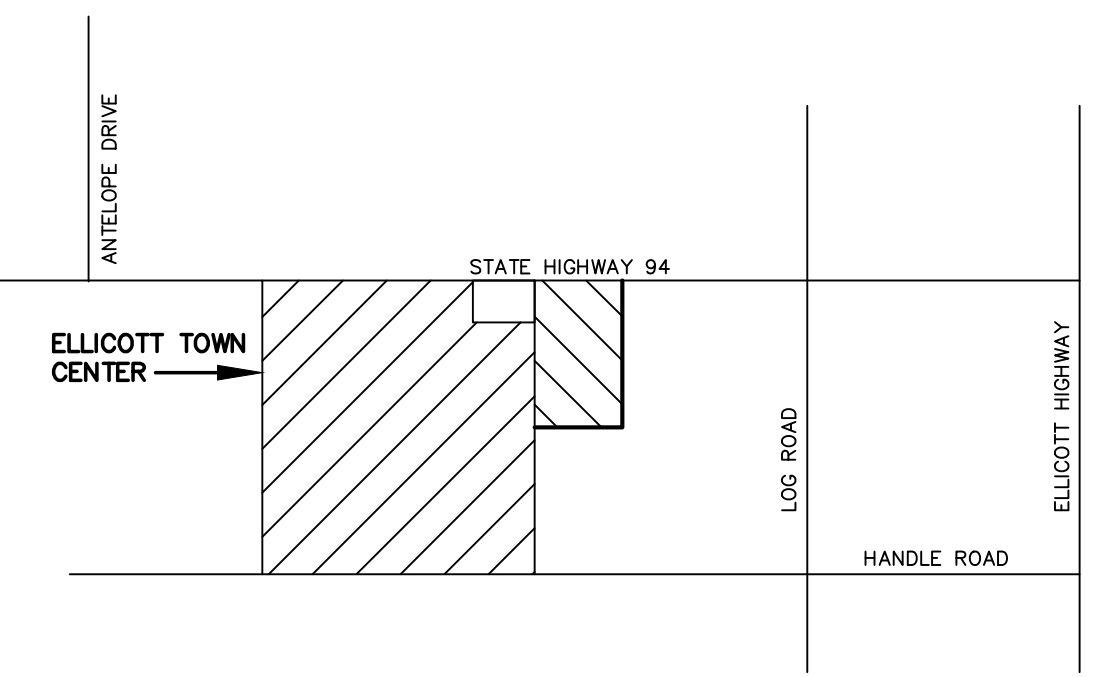
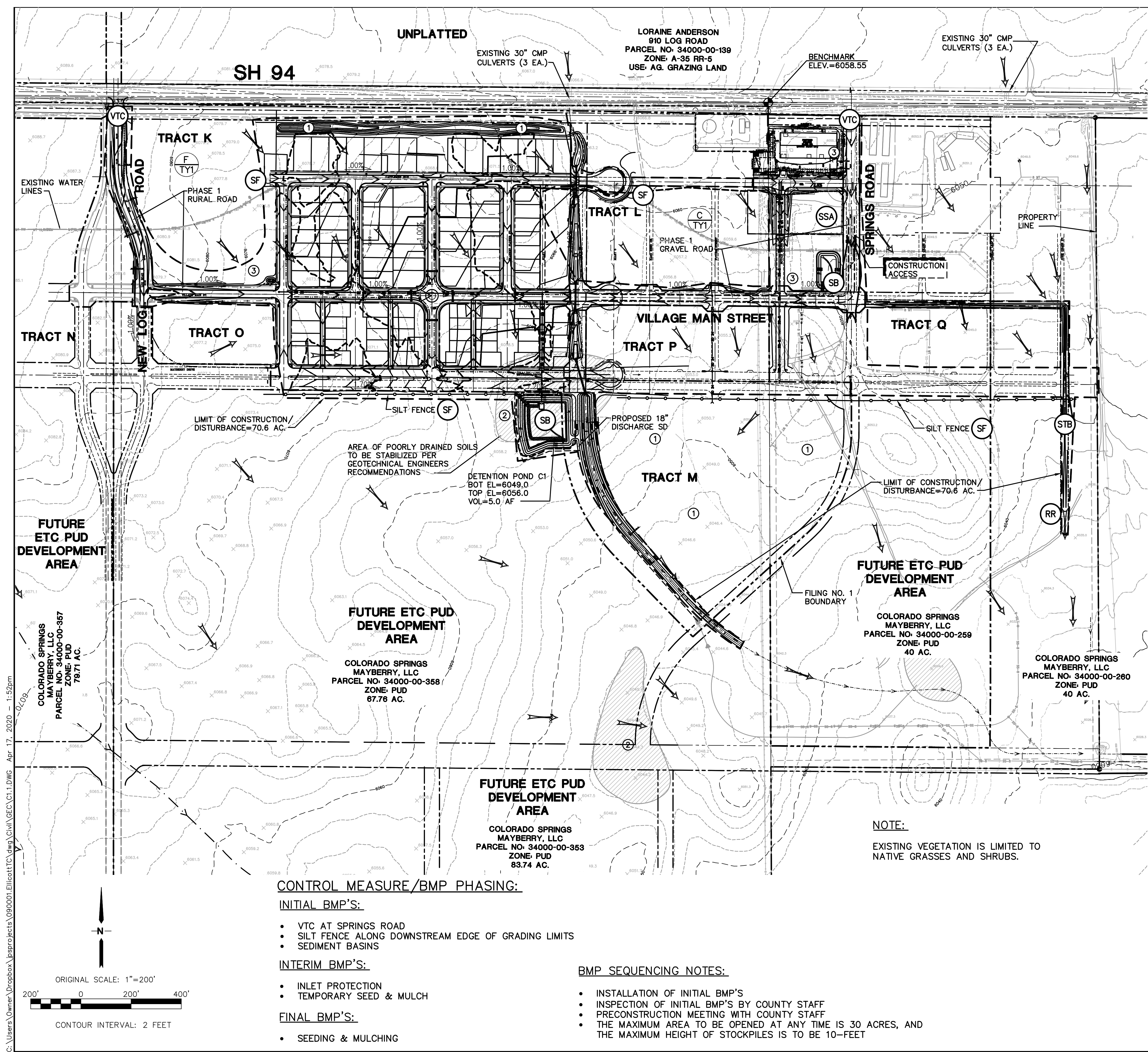
| No. | REVISION | BY | DATE |
|-----|----------------|-----|---------|
| A | EPC COMMENTS | JPS | 7/25/06 |
| A | EPC COMMENTS | JPS | 1/15/07 |
| A | 2018 SUBMITTAL | JPS | 3/28/18 |
| A | 2018 SUBMITTAL | JPS | 1/31/20 |
| A | EPC COMMENTS | JPS | 4/17/20 |

OVERALL SITE PLAN
& GENERAL NOTES

| | |
|----------------------|------------------------|
| HORZ. SCALE: 1"=200' | DRAWN: RMD |
| VERT. SCALE: N/A | DESIGNED: JPS |
| SURVEYED: UP&E | CHECKED: JPS |
| CREATED: 3/8/05 | LAST MODIFIED: 4/17/20 |
| PROJECT NO: 090001 | MODIFIED BY: BJJ |

SHEET:

C1



VICINITY MAP

ESTIMATED EARTHWORK QUANTITY:

| | EXCAVATION (TOTAL CUT) | EMBANKMENT FILL ^A | NET |
|--------------|---------------------------|---------------------------------|-----------------|
| FILING No. 1 | 40,547 | 44,703 CY | 4,156 CY (FILL) |

(ASSUMES 15% COMPACTION FACTOR)

NOTE: THIS ESTIMATE IS PROVIDED FOR INFORMATION ONLY, REPRESENTING THE CALCULATED BULK EARTHWORK VOLUME TO FINISHED GRADE, EXCLUDING ANY ADJUSTMENT FOR PAVEMENT DEPTHS, ETC. CONTRACTOR SHALL MAKE HIS OWN DETERMINATION OF EARTHWORK QUANTITIES AS BASIS FOR BID PRICING AND NOTIFY ENGINEER OF ANY DISCREPANCIES.

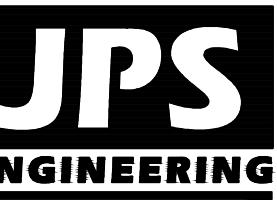
KEYED NOTES:

- CONTRACTOR MAY WASTE EXCESS CUT MATERIAL OR BORROW SUITABLE FILL MATERIAL FROM THIS AREA. MATCH INTO EXISTING GRADES WITH 3:1 MAX CUT AND FILL SLOPES AND MAINTAIN POSITIVE DRAINAGE IN ALL AREAS.
- POTENTIALLY UNSTABLE SOIL AREAS TO BE STABILIZED PER GEOTECHNICAL ENGINEERS RECOMMENDATIONS
- CONTRACTOR EQUIPMENT / OFFICE AREA

LEGEND:

- FILING LIMITS
- PROPOSED FLOW DIRECTION ARROW
- SILT FENCE
- STRAW BALES
- RIPRAP
- EXISTING CONTOURS
- PROPOSED CONTOURS
- CUT-FILL DEMARCATION LINE
- PROPOSED SPOT ELEVATION (FLOWLINE)
- PROPOSED STREET PROFILE GRADE
- FLOWLINE
- RIPRAP (RR)
- INLET PROTECTION (GRAVEL FILTER) (IP)
- SILT FENCE (SF)
- VEHICLE TRACKING CONTROL PAD (VTC)
- TEMPORARY SEED AND MULCH ON DISTURBED SLOPES (TM)
- STRAW BALE BARRIER (STB)
- TEMPORARY SEDIMENT BASIN (SB)
- STABILIZED STAGING AREA (SSA)

MAYBERRY, COLORADO SPRINGS - FILING NO. 1



19 E. Willamette Ave.
Colorado Springs, CO
80903
PH: 719-477-9429
FAX: 719-471-0766
www.jspsngr.com



CALL UTILITY NOTIFICATION
CENTER OF COLORADO
1-800-922-1987
CALL BEFORE YOU DIG
BEFORE YOU DIG GRADE, OR EXCAVATE
FOR THE MARKING OF UNDERGROUND
MEMBER UTILITIES

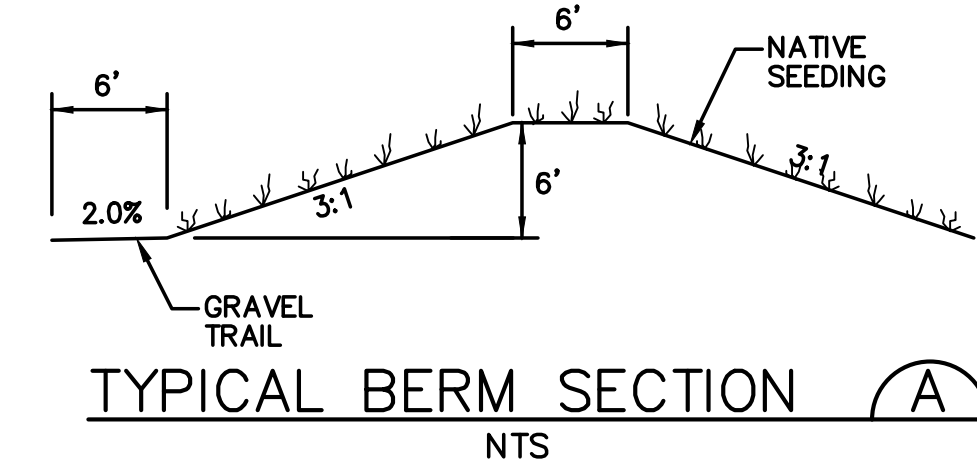
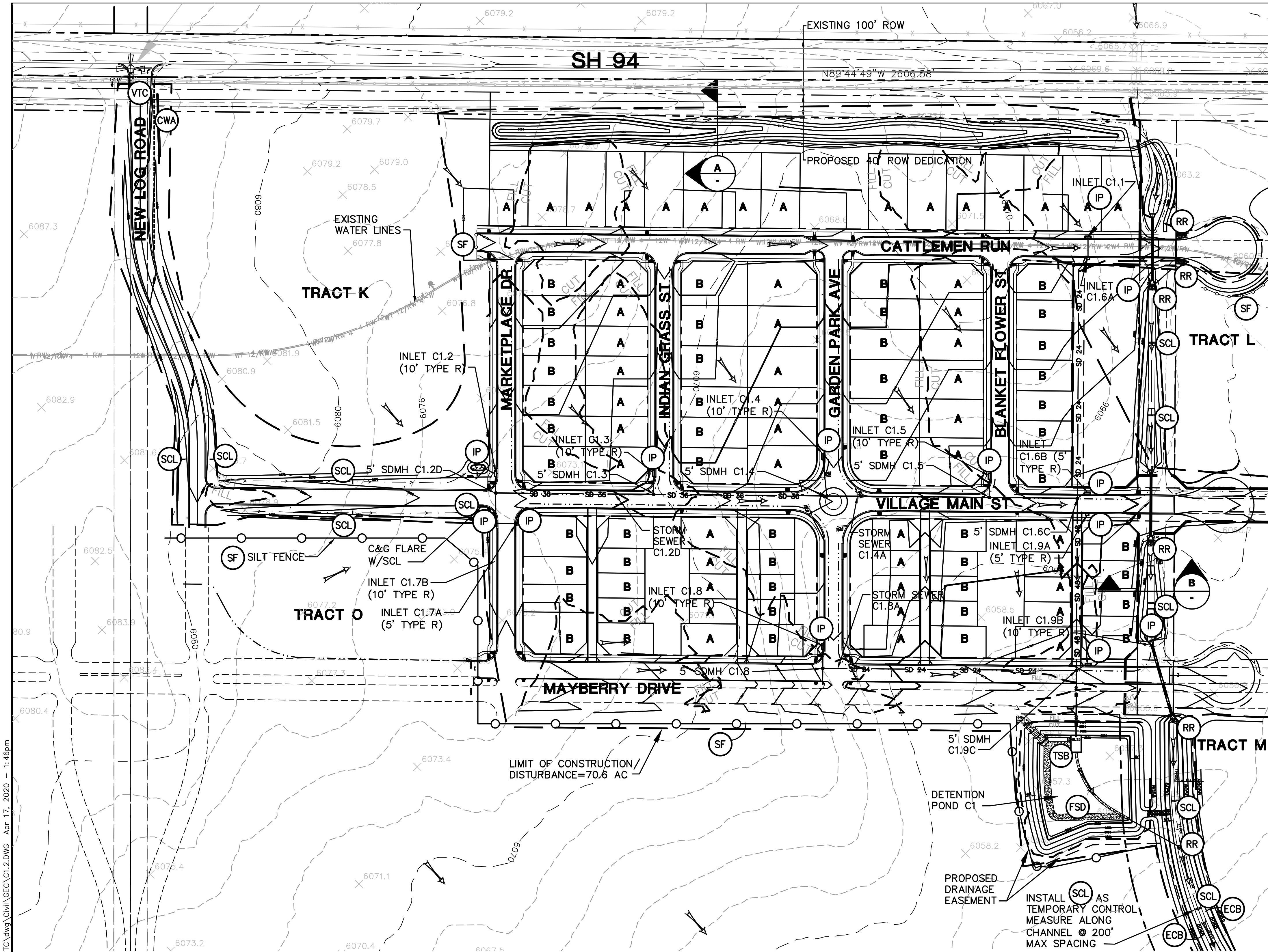
| NO. | REVISION | BY | DATE |
|-----|----------------|-----|---------|
| 1 | 2018 SUBMITTAL | JPS | 8/22/18 |
| 2 | EPC COMMENTS | JPS | 1/15/19 |
| 3 | EPC COMMENTS | JPS | 9/12/19 |
| 4 | EPC COMMENTS | JPS | 1/31/20 |
| 5 | EPC COMMENTS | JPS | 4/17/20 |

PHASE 1
MASTER GRADING PLAN

| | |
|------------------------|------------------------|
| HORZ. SCALE: 1" = 200' | DRAWN: RMD |
| VERT. SCALE: N/A | DESIGNED: JPS |
| SURVEYED: UP&E | CHECKED: JPS |
| CREATED: 12/03/00 | LAST MODIFIED: 4/17/20 |
| PROJECT NO: 090001 | MODIFIED BY: BJJ |

SHEET: C1.1

G:\Users\Owner\Dropbox\jpsprojects\090001\Ellicott\TC.dwg Civil\GECA\CT.2.DWG Apr 17, 2020 - 1:46pm

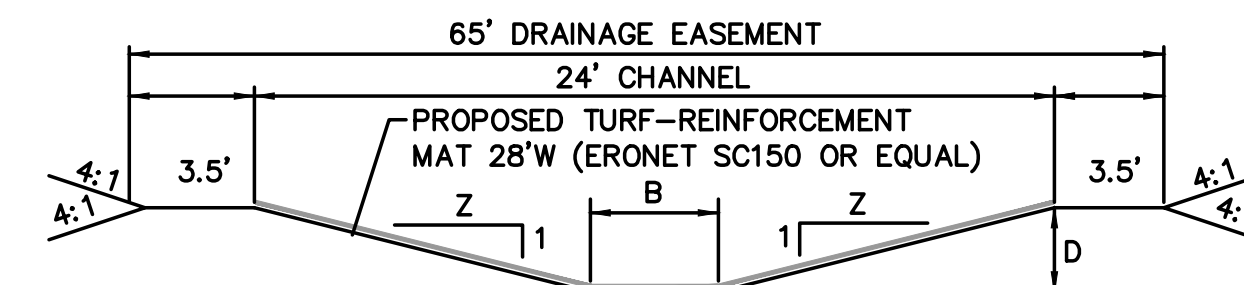
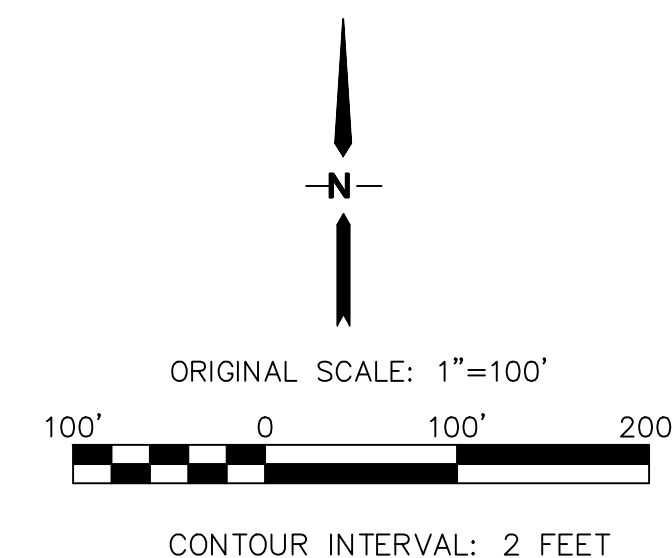


LEGEND:

- FILING LIMITS
- - - EXISTING CONTOURS
- PROPOSED CONTOURS
- × 99.00 PROPOSED SPOT ELEVATION (FLOWLINE)
- PROPOSED STREET PROFILE GRADE
- A / B OVERLOT GRADING LOT TYPE (SEE SH. C2.1)

EROSION CONTROL LEGEND:

- IP INLET PROTECTION (GRAVEL FILTER)
- SF SILT FENCE
- VTC VEHICLE TRACKING CONTROL PAD
- TM TEMPORARY SEED AND MULCH ON DISTURBED SLOPES
- STB STRAW BALE BARRIER
- TSB TEMPORARY SEDIMENT BASIN
- RR RIPRAP
- FSD FULL-SPECTRUM DETENTION BASIN
- SCL SEDIMENT CONTROL LOG
- ECB EROSION CONTROL BLANKETS
- CWA CONCRETE WASHOUT AREA

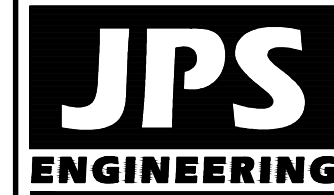


NOTE: B=12'; Z=4:1; D=2.5'
UNLESS OTHERWISE NOTED

CHANNEL SECTION B
SCALE: NTS

MAYBERRY, COLORADO SPRINGS - FILING NO. 1

FILING 1 GRADING & EROSION CONTROL PLAN



19 E. Willamette Ave.
Colorado Springs, CO
80903
PH: 719-477-9429
FAX: 719-471-0766
www.jpsengr.com



CALL UTILITY NOTIFICATION
CENTER OF COLORADO
1-800-922-1987
CALL BEFORE YOU DIG
BEFORE YOU DIG GRADE, OR EXCAVATE
FOR THE MARKING OF UNDERGROUND
MEMBER UTILITIES

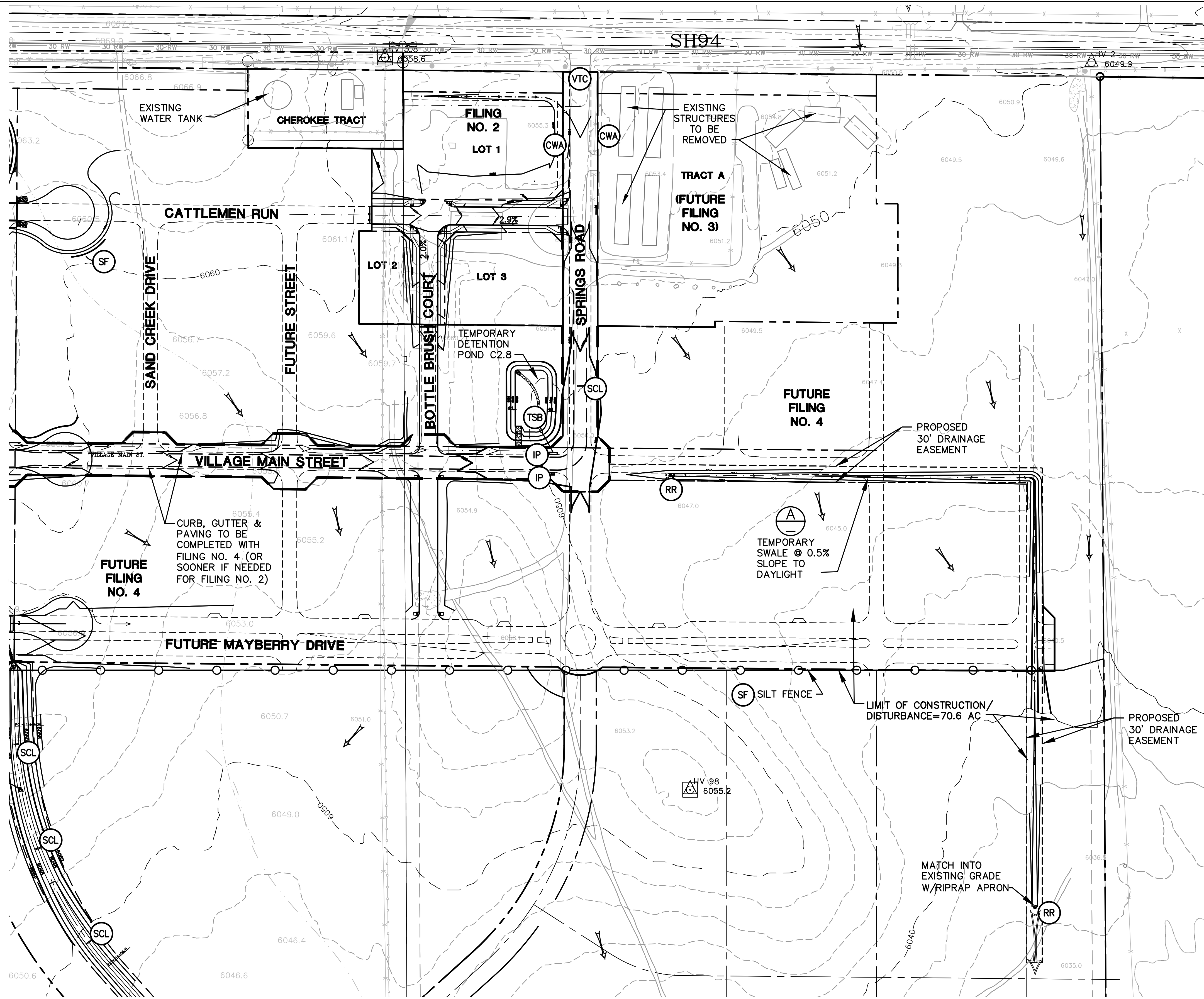
| BY | DATE | REVISION |
|-----|---------|----------------|
| JPS | 8/22/18 | 2018 SUBMITTAL |
| JPS | 1/15/19 | EPC COMMENTS |
| JPS | 9/12/19 | EPC COMMENTS |
| JPS | 1/31/20 | EPC COMMENTS |
| JPS | 4/17/20 | EPC COMMENTS |

| | |
|----------------------|------------------------|
| HORZ. SCALE: 1"=100' | DRAWN: RMD |
| VERT. SCALE: N/A | DESIGNED: JPS |
| SURVEYED: UP&E | CHECKED: JPS |
| CREATED: 12/03/00 | LAST MODIFIED: 4/17/20 |
| PROJECT NO: 090001 | MODIFIED BY: BJJ |

SHEET:

C1.2

G:\Users\Owner\Dropbox\psprojects\090001\Ellicott\TC.dwg\GEC\Cl.3.DWG Apr 17, 2020 - 1:46pm

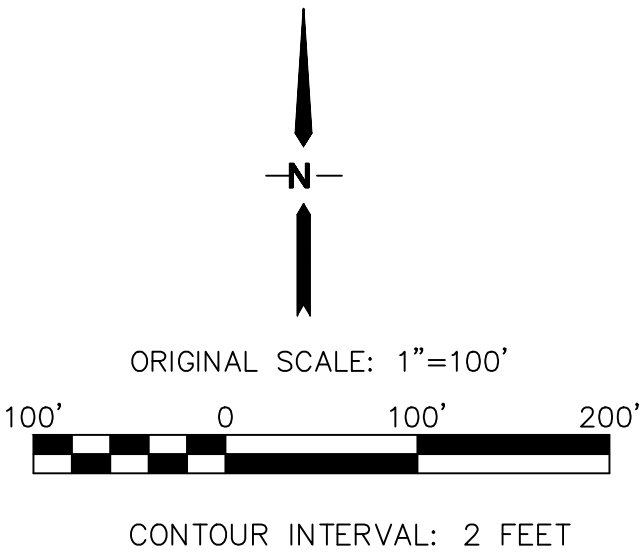
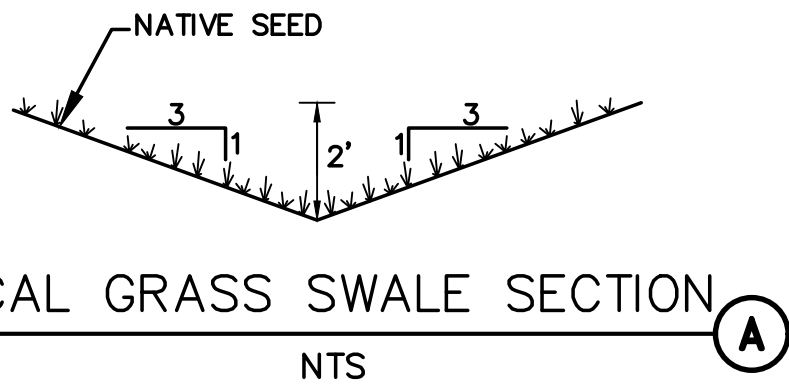


LEGEND:

- FILING LIMITS
- 6490 EXISTING CONTOURS
- 6490 PROPOSED CONTOURS
- X 99.00 PROPOSED SPOT ELEVATION (FLOWLINE)
- PROPOSED STREET PROFILE GRADE
- LIMITS OF DISTURBANCE/CONSTRUCTION

EROSION CONTROL LEGEND:

- IP INLET PROTECTION (GRAVEL FILTER)
- SF SILT FENCE
- VTC VEHICLE TRACKING CONTROL PAD
- TM TEMPORARY SEED AND MULCH ON DISTURBED SLOPES
- STB STRAW BALE BARRIER
- TSB TEMPORARY SEDIMENT BASIN
- RR RIPRAP
- CWA CONCRETE WASHOUT AREA

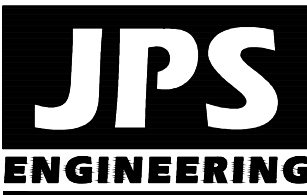


MAYBERRY, COLORADO SPRINGS - FILING NO. 1

EAST SITE GRADING
& EROSION CONTROL PLAN

| | |
|----------------------|------------------------|
| HORZ. SCALE: 1"=100' | DRAWN: RMD |
| VERT. SCALE: N/A | DESIGNED: JPS |
| SURVEYED: UP&E | CHECKED: JPS |
| CREATED: 12/03/00 | LAST MODIFIED: 4/17/20 |
| PROJECT NO: 090001 | MODIFIED BY: BJJ |

SHEET: C1.3



19 E. Willamette Ave.
Colorado Springs, CO
80903
PH: 719-477-9429
FAX: 719-471-0766



CALL UTILITY NOTIFICATION
CENTER OF COLORADO
1-800-922-1987
CALL 3 DAYS BEFORE ANY
EXCAVATION OR GRADE
BEFORE YOU DIG, GRADE, OR EXCAVATE
FOR THE MARKING OF UNDERGROUND
UTILITIES

| No. | REVISION | BY | DATE |
|-----|----------------|-----|---------|
| 1 | 2018 SUBMITTAL | JPS | 8/22/18 |
| 2 | EPC COMMENTS | JPS | 1/15/19 |
| 3 | EPC COMMENTS | JPS | 9/12/19 |
| 4 | EPC COMMENTS | JPS | 1/31/20 |
| 5 | EPC COMMENTS | JPS | 4/17/20 |

- COLORADO DEPARTMENT OF PUBLIC HEALTH AND ENVIRONMENT
WATER QUALITY CONTROL DIVISION
WQCD - PERMITS
4300 CHERRY CREEK DRIVE SOUTH
DENVER, CO 80246-1530
ATTN: PERMITS UNIT

| <u>SEEDING MIX:</u> | | <u>AMOUNT IN PLS</u> |
|-----------------------------------|--------------------|--|
| <u>GRASS</u> | <u>VARIETY</u> | <u>LBS. PER ACRE</u> |
| CRESTED WHEAT GRASS | EPHRAIM OR HYCREST | 4.0 LBS. |
| PERENIAL RYE | LINN | 2.0 LBS. |
| WESTERN WHEATGRASS | SARTON | 3.0 LBS. |
| SMOOTH BROME GRASS | LINCOLN OR MANCHAR | 5.0 LBS. |
| SIDEOATS GRAMA | EPHRAIM | 2.5 LBS. |
| TOTAL: | | 16.5 LBS. |
| SEEDING & FERTILIZER APPLICATION: | | DRILL SEED OR HYDRO-SEED PER CDOT SPEC. SECTION 212. |
| MULCHING APPLICATION: | | CONFORM TO CDOT SPEC-SECTION 213. |

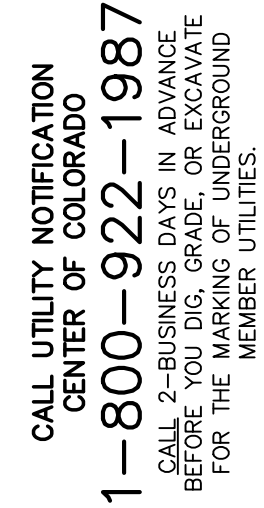
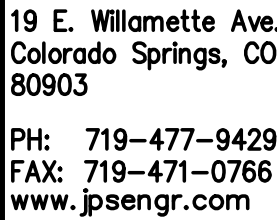
SEEDING & FERTILIZER APPLICATION: DRILL SEED OR
HYDRO-SEED PER
CDOT SPEC. SECTION 212.

MULCHING APPLICATION: CONFORM TO CDOT
SPEC-SECTION 213.

COLORADO DEPARTMENT OF PUBLIC HEALTH
AND ENVIRONMENT
WATER QUALITY CONTROL DIVISION
WQCD-PERMITS
4300 CHERRY CREEK DRIVE SOUTH
DENVER, COLORADO 80246-1530
ATTN.: PERMITS UNIT

2 ACCUMULATED SEDIMENT AND DEBRIS SHALL BE REMOVED WHEN THE SEDIMENT LEVEL REACHES ONE HALF THE HEIGHT OF THE BMP OR AT ANY TIME THAT SEDIMENT OR DEBRIS ADVERSELY IMPACTS THE FUNCTION OF THE BMP.

MAYBERRY, COLORADO SPRINGS - FILING NO. 1



| No. | REVISION | BY | DATE |
|----------|----------------|-----|---------|
| C | EPC COMMENTS | JPS | 1/15/07 |
| D | 2018 SUBMITTAL | JPS | 8/22/18 |
| E | EPC COMMENTS | JPS | 9/12/19 |
| F | EPC COMMENTS | JPS | 1/31/20 |
| G | EPC COMMENTS | JPS | 4/17/20 |

EROSION CONTROL NOTES

| | | | |
|--------------|---------|----------------|---------|
| HORZ. SCALE: | NTS | DRAWN: | RMD |
| VERT. SCALE: | N/A | DESIGNED: | JPS |
| SURVEYED: | UP&E | CHECKED: | JPS |
| CREATED: | 4/14/20 | LAST MODIFIED: | 4/17/20 |
| PROJECT NO: | 090001 | MODIFIED BY: | BJJ |

C1.4A



- ORIFICE PLATE AND TRASH RACK
DETAILS AND NOTES (B)

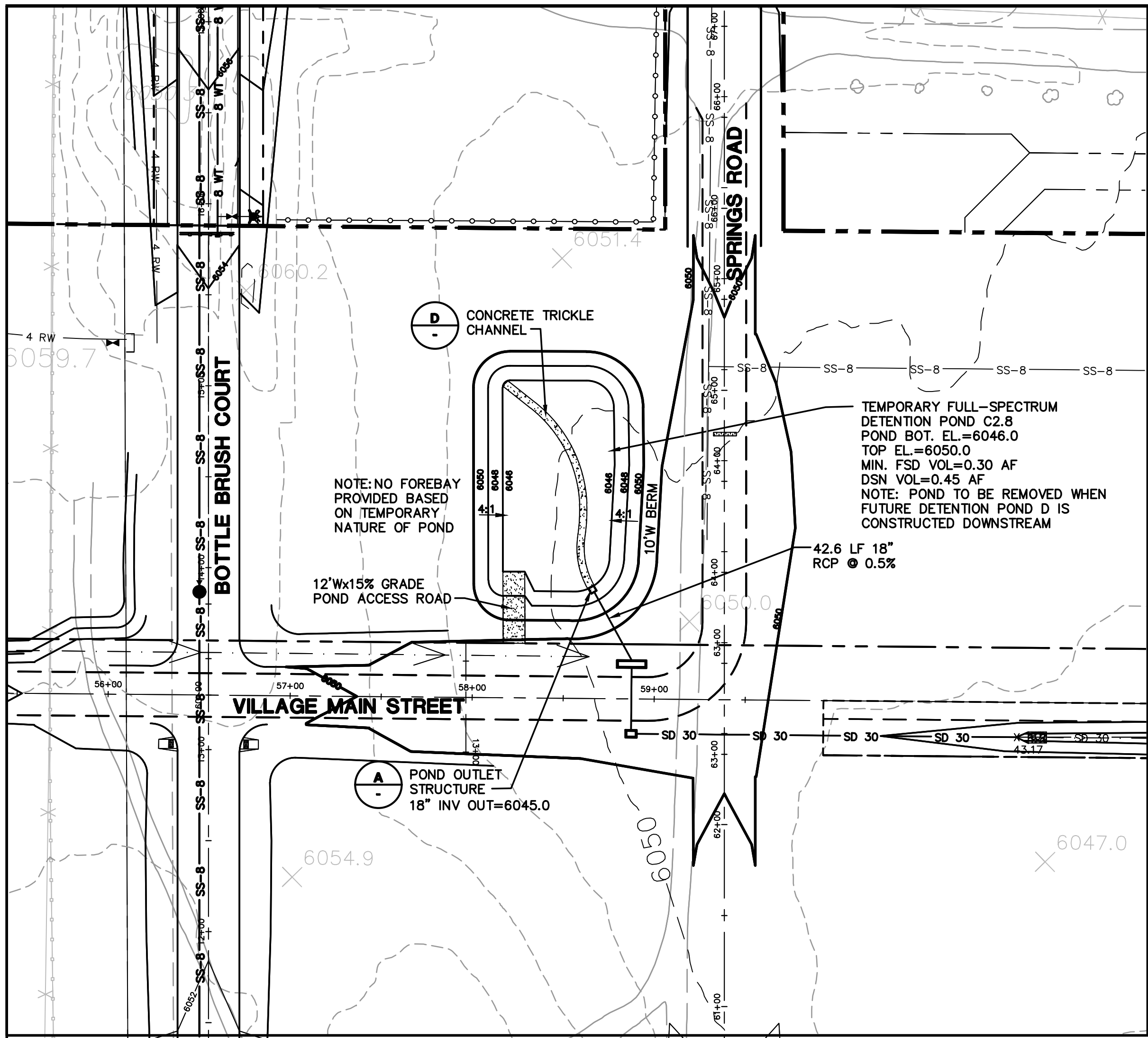
POND C-1 PLAN & DETAILS

MAYBERRY, COLORADO SPRINGS - FILING NO. 1

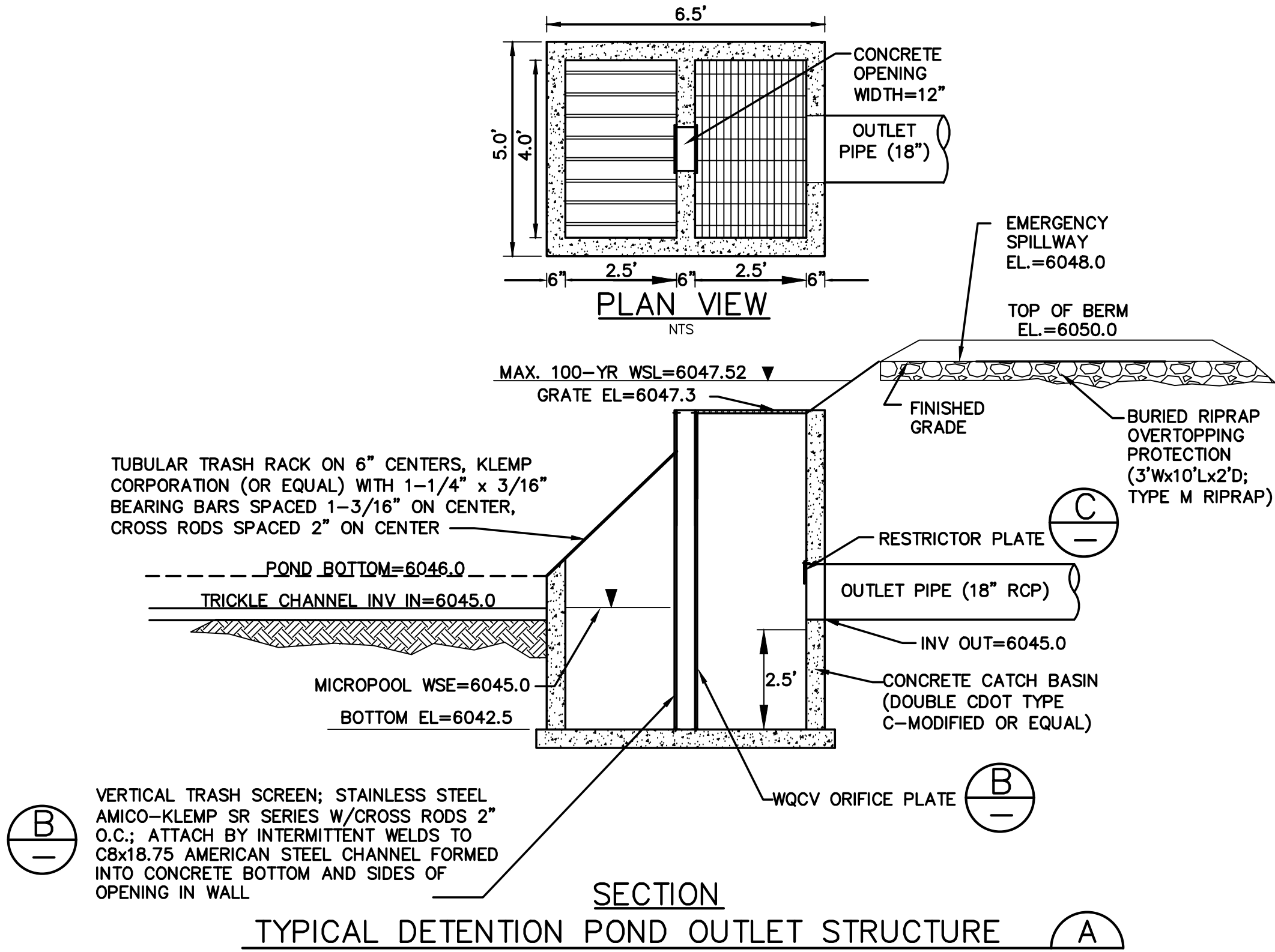
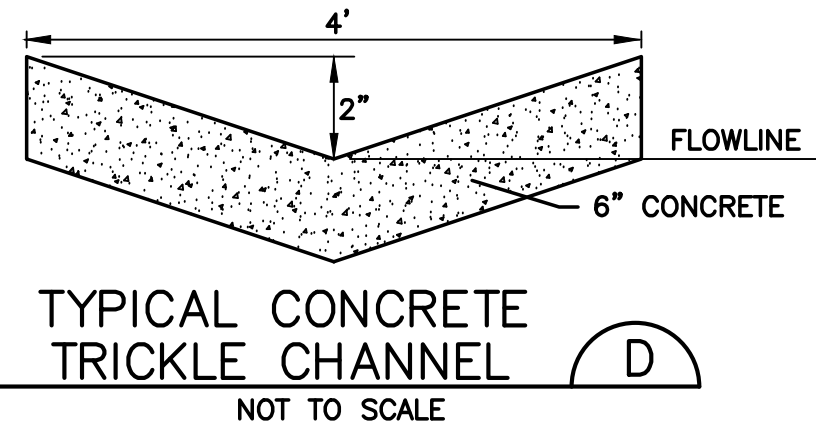
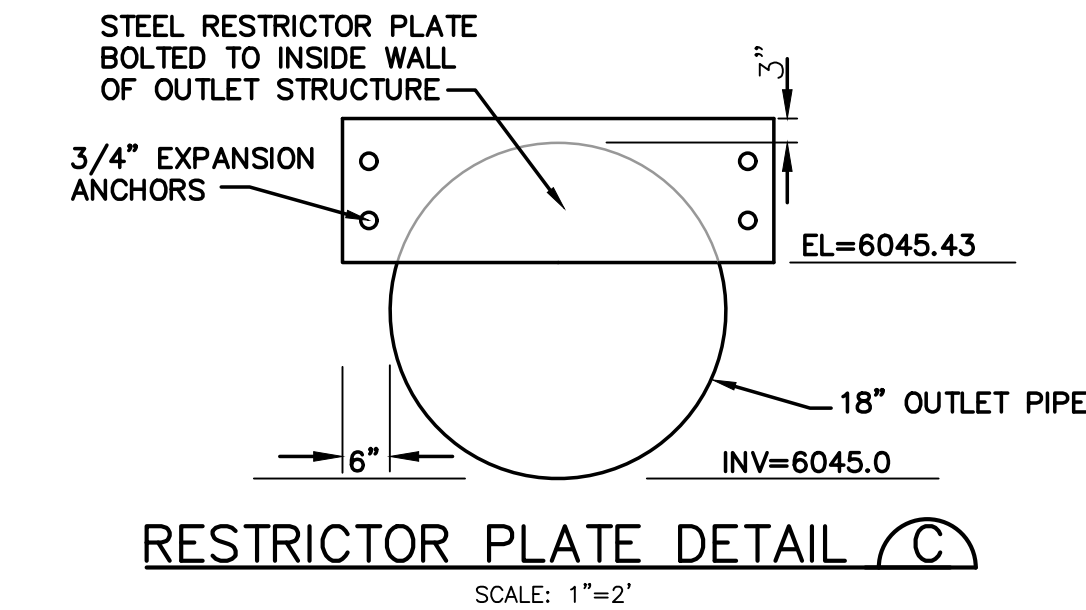
| | | | |
|---------------|--------|----------------|---------|
| HORIZ. SCALE: | 1"=50' | DRAWN: | BJS |
| VERT. SCALE: | N/A | DESIGNED: | JPS |
| SURVEYED: | UP&E | CHECKED: | JPS |
| CREATED: | 4/4/06 | LAST MODIFIED: | 4/17/20 |
| PROJECT NO: | 090001 | MODIFIED BY: | BJS |

C1.5

C:\Users\Owner\Dropbox\psprojects\090001\Ellicott\DWG\Civil\GEC\C1.6.dwg Apr 23, 2020 8:55am



TEMPORARY POND C2.8 PLAN



ORIFICE PLATE NOTES:

1. MINIMIZE THE NUMBER OF COLUMNS.
2. PROVIDE GASKET MATERIAL BETWEEN THE ORIFICE PLATE AND CONCRETE.
3. BOLT PLATE TO CONCRETE 12" MAX. ON CENTER.

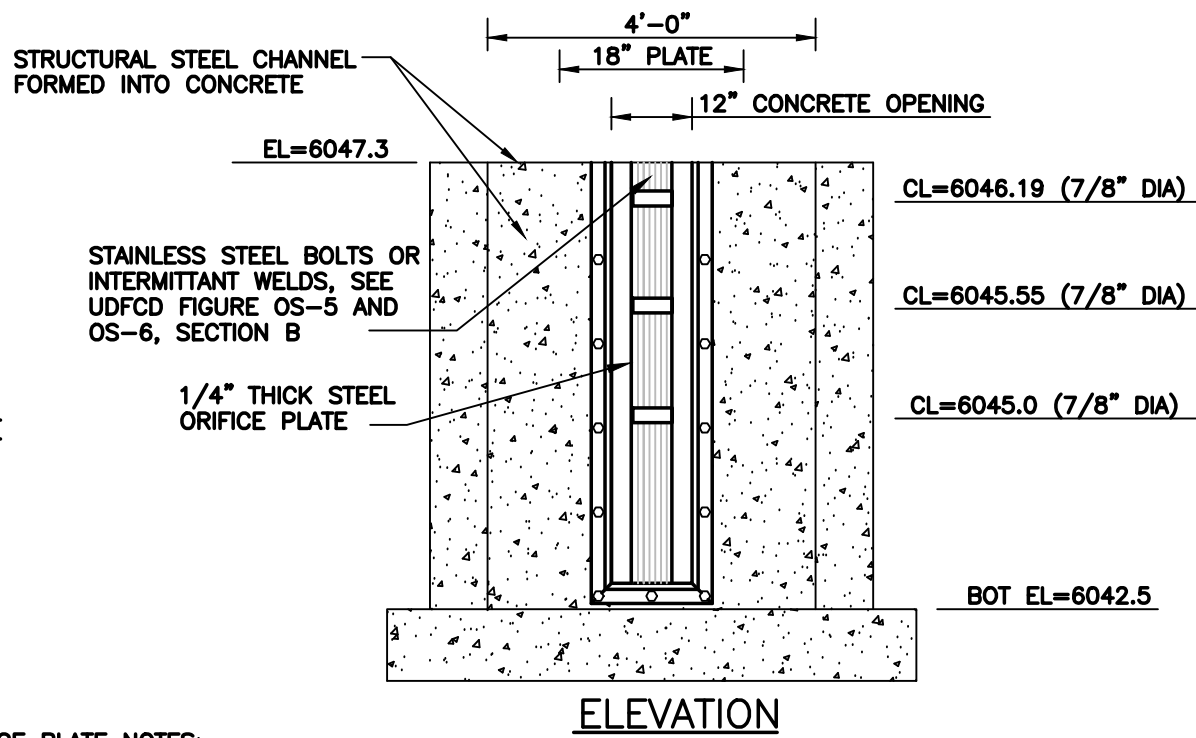
EURY AND WQCV TRASH RACKS:

1. WELL-SCREEN TRASH RACKS (FOR CIRCULAR ORIFICES) SHALL BE STAINLESS STEEL AND SHALL BE ATTACHED BY INTERMITTENT WELDS ALONG THE EDGE OF THE MOUNTING FRAME.
2. STRUCTURAL DESIGN OF TRASH RACKS BASED ON FULL HYDROSTATIC HEAD WITH ZERO HEAD DOWNSTREAM OF THE RACK.

OVERFLOW TRASH RACKS:

1. ALL TRASH RACKS SHALL BE MOUNTED USING STAINLESS STEEL HARDWARE AND PROVIDED WITH HINGED AND LOCKABLE OR BOLTABLE ACCESS PANELS.
2. TRASH RACKS SHALL BE STAINLESS STEEL, ALUMINUM, OR STEEL. STEEL TRASH RACKS SHALL BE HOT DIP GALVANIZED AND MAY BE HOT POWDER COATED AFTER GALVANIZING.
3. TRASH RACKS SHALL BE DESIGNED SUCH THAT THE DIAGONAL DIMENSION OF EACH OPENING IS SMALLER THAN THE DIAMETER OF THE OUTLET PIPE.
4. STRUCTURAL DESIGN OF TRASH RACKS SHALL BE BASED ON FULL HYDROSTATIC HEAD WITH ZERO HEAD DOWNSTREAM OF THE RACK.

ORIFICE PLATE AND TRASH RACK DETAILS AND NOTES (B)



MAYBERRY, COLORADO SPRINGS - FILING NO. 1

| | |
|---------------------|------------------------|
| HORZ. SCALE: 1"=50' | DRAWN: RMD |
| VERT. SCALE: N/A | DESIGNED: JPS |
| SURVEYED: UP&E | CHECKED: JPS |
| CREATED: 1/15/19 | LAST MODIFIED: 4/17/20 |
| PROJECT NO: 090001 | MODIFIED BY: BJJ |

SHEET:

C1.6

POND C2.8
PLAN & DETAILS

| No. | REVISION | BY | DATE |
|-----|----------------|-----|---------|
| 1 | 2018 SUBMITTAL | JPS | 8/22/18 |
| 2 | EPC COMMENTS | JPS | 1/15/19 |
| 3 | EPC COMMENTS | JPS | 9/12/19 |
| 4 | EPC COMMENTS | JPS | 1/31/20 |
| 5 | EPC COMMENTS | JPS | 4/17/20 |

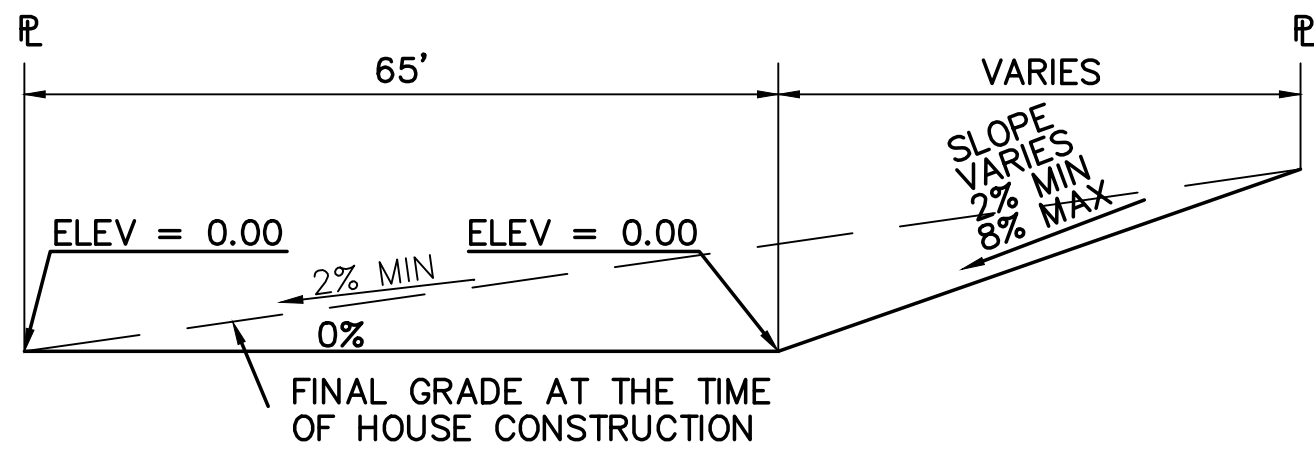
CALL UTILITY NOTIFICATION
CENTER OF COLORADO
1-800-922-1987
CALL 24 HOURS BEFORE YOU DIG, GRADE, OR EXCAVATE
FOR THE MARKING OF UNDERGROUND
MEMBER UTILITIES.



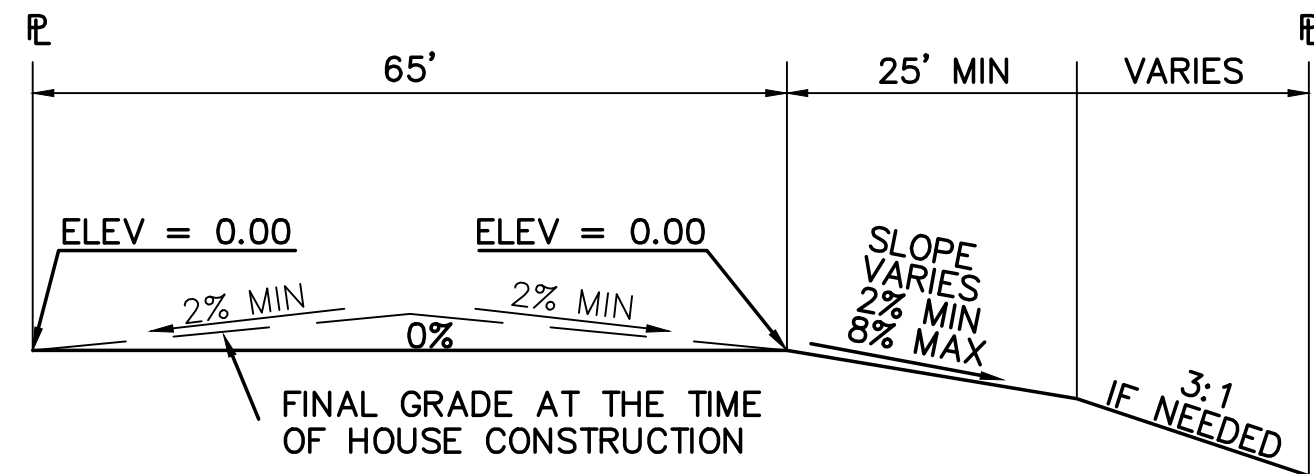
19 E. Willamette Ave.
Colorado Springs, CO
80903
PH: 719-477-9429
FAX: 719-471-0766
www.jpsengr.com

JPS
ENGINEERING

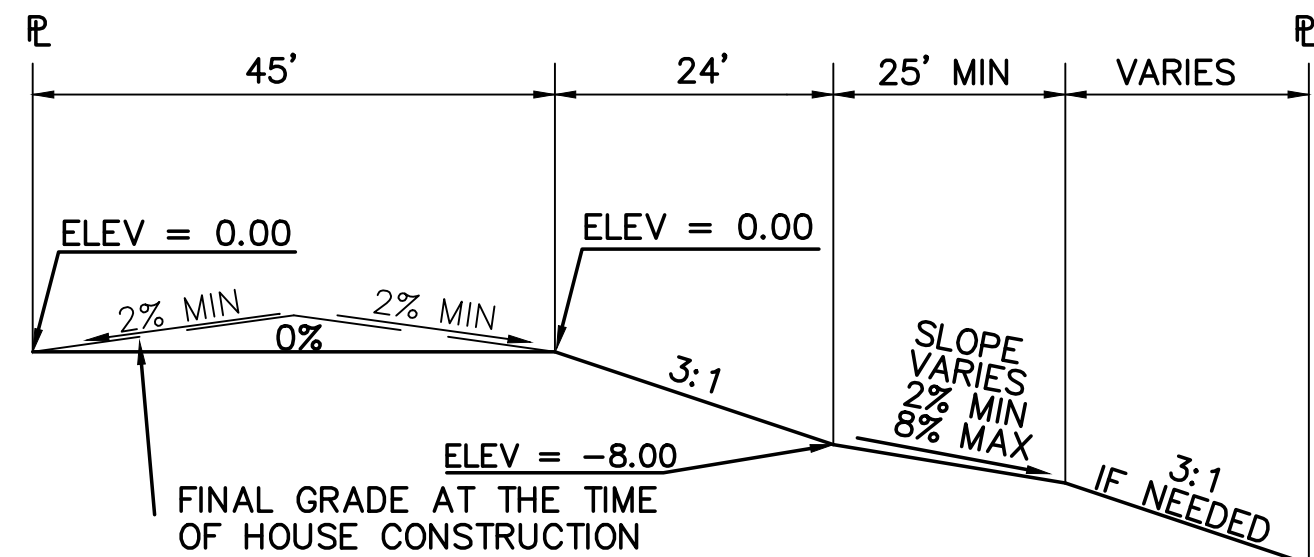
Z:\090001.Elliot\TTC.dwg\Civil\GEC\C2.1.dwg Jan 29, 2020 -- 1:45pm



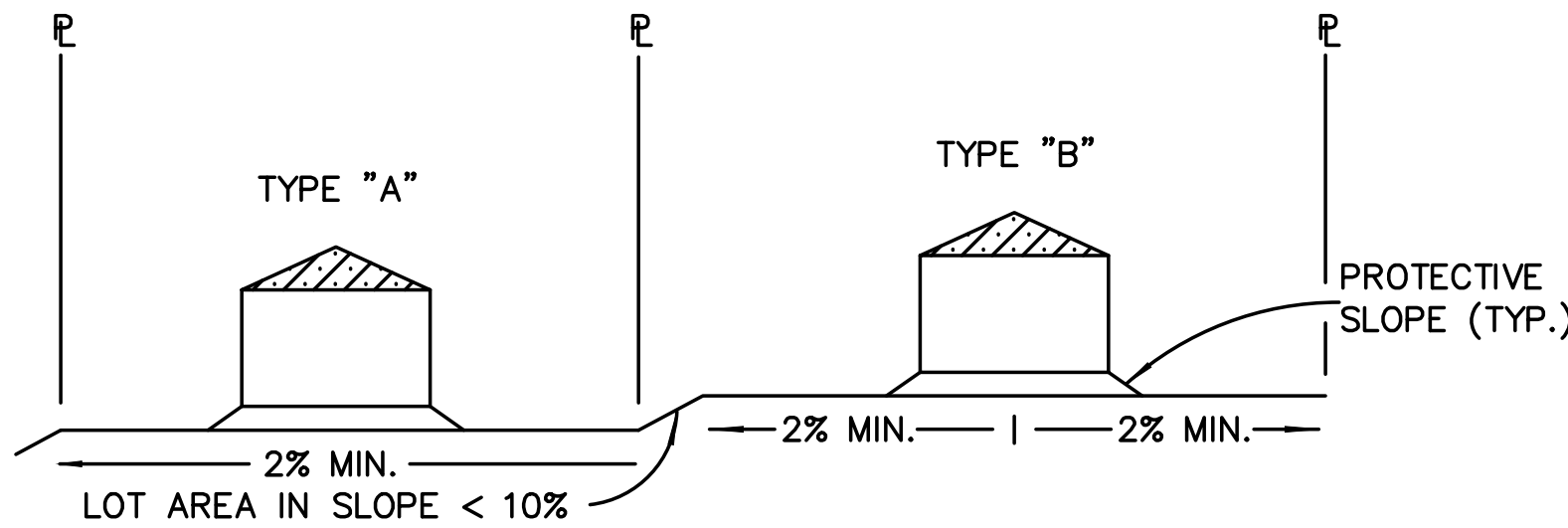
TYPICAL "A" LOT
SCALE: 1"=20'



TYPICAL "B" LOT
SCALE: 1"=20'

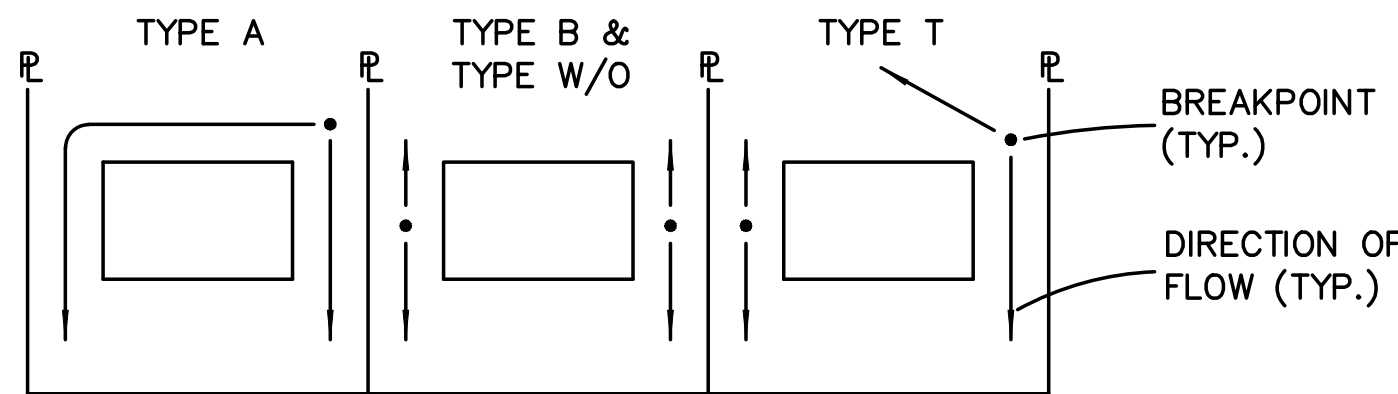


TYPICAL "WALK-OUT" LOT - "C" LOT
SCALE: 1"=20'

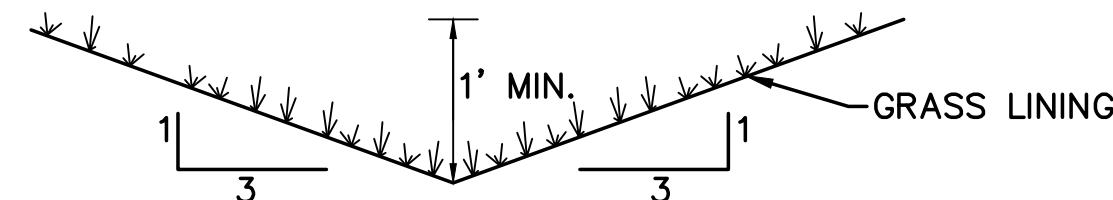


TYPICAL LOT SECTION DETAIL
N.T.S.

NOTE:
FINAL GRADING TO COMPLY WITH H.U.D. STANDARDS CONTAINED IN SECTION 310 AND 602 OF THE MINIMUM PROPERTY STANDARDS (MPS) 4900.1, HANDBOOK 4140.3 CHG (DATA SHEET 79g), IF APPLICABLE, AND ALL LEGAL STANDARDS.

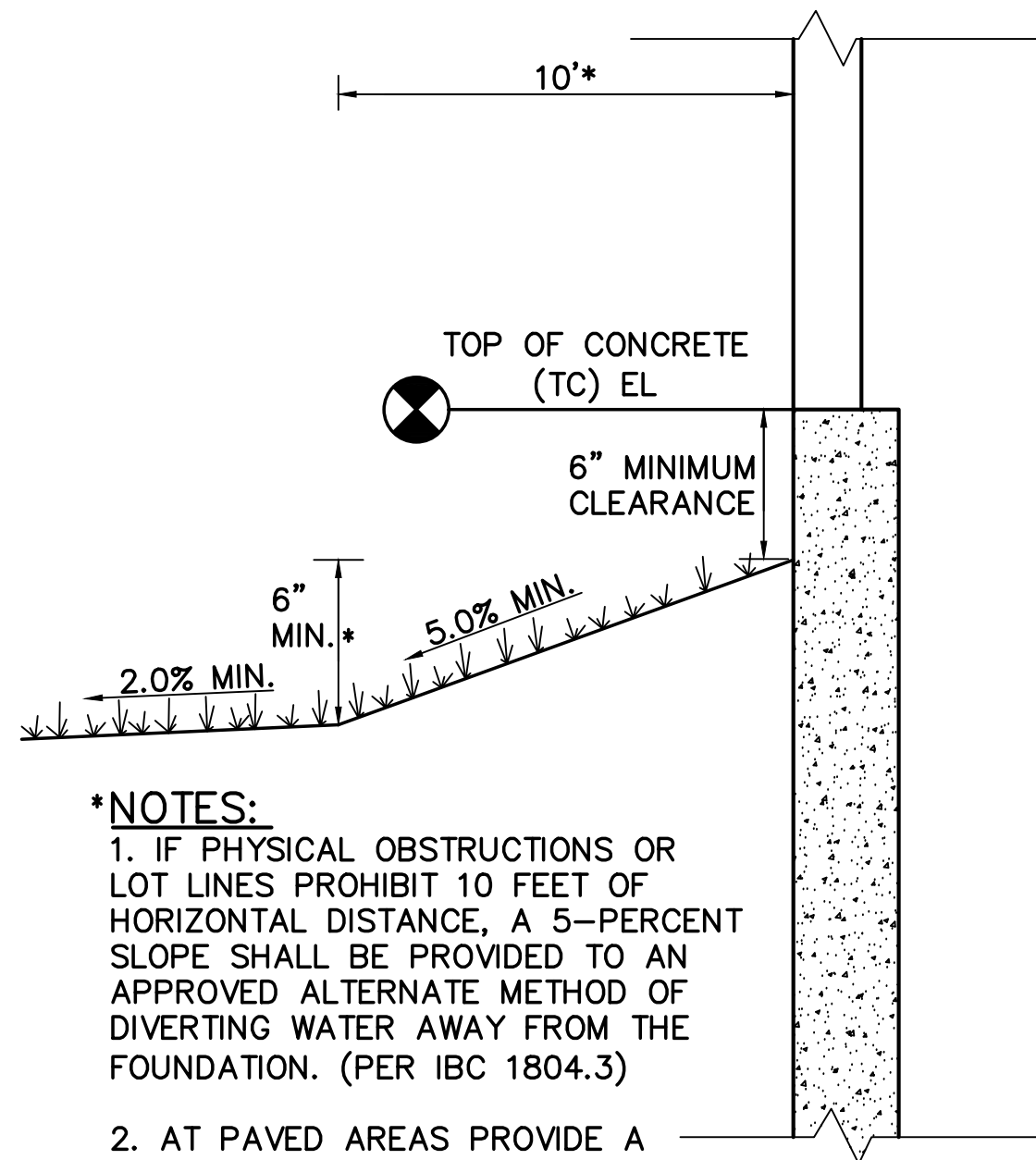


LOT DRAINAGE TYPES
N.T.S.



TYPICAL SIDE/REAR LOT SWALE (A)
N.T.S.

NOTE: BUILDERS AND OWNERS SHALL MAINTAIN PROPER PROTECTIVE SLOPES & SIDE/REAR LOT SWALES DURING AND AFTER HOME CONSTRUCTION.

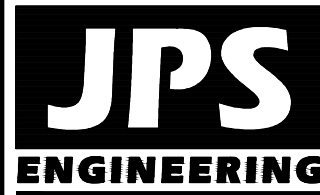


*NOTES:
1. IF PHYSICAL OBSTRUCTIONS OR LOT LINES PROHIBIT 10 FEET OF HORIZONTAL DISTANCE, A 5-PERCENT SLOPE SHALL BE PROVIDED TO AN APPROVED ALTERNATE METHOD OF DIVERTING WATER AWAY FROM THE FOUNDATION. (PER IBC 1804.3)

2. AT PAVED AREAS PROVIDE A MINIMUM 2.0% SLOPE AWAY FROM THE BUILDING FOR THE FIRST 10 FEET OF HORIZONTAL DISTANCE.

TYPICAL BUILDING DRAINAGE DETAIL (B)
N.T.S.

MAYBERRY, COLORADO SPRINGS - FILING NO. 1



19 E. Willamette Ave.
Colorado Springs, CO
80903
PH: 719-477-9429
FAX: 719-471-0766
www.jpsengr.com



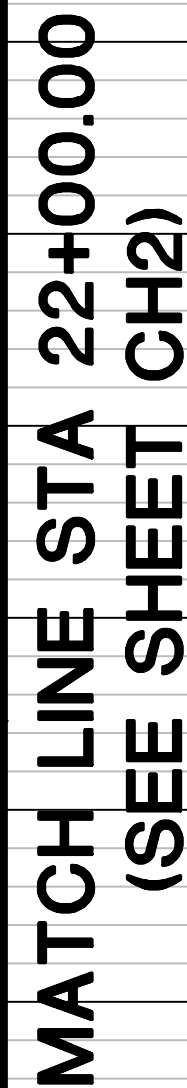
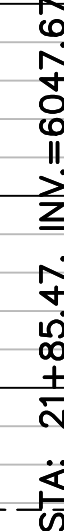
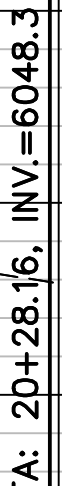
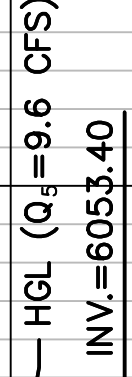
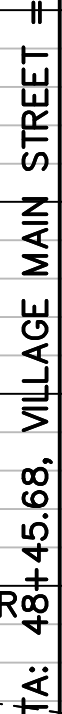
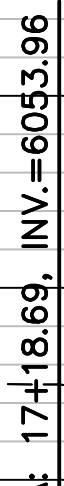
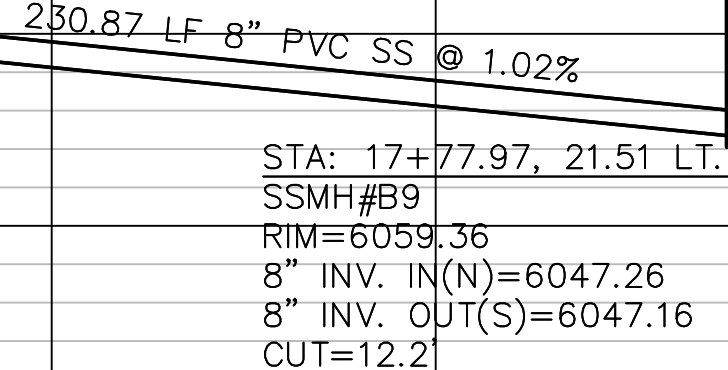
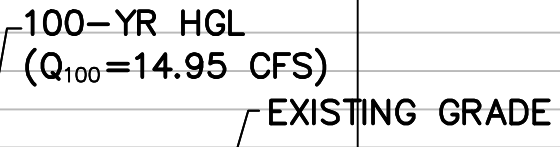
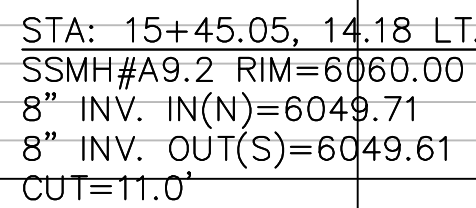
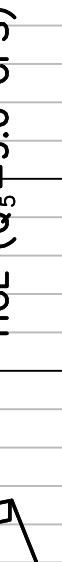
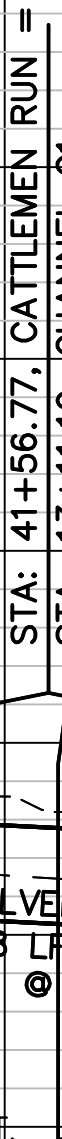
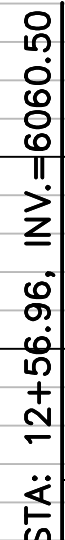
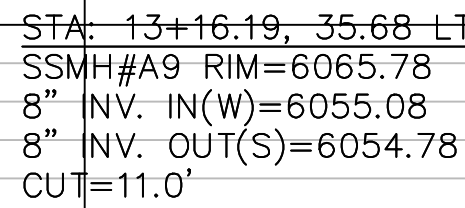
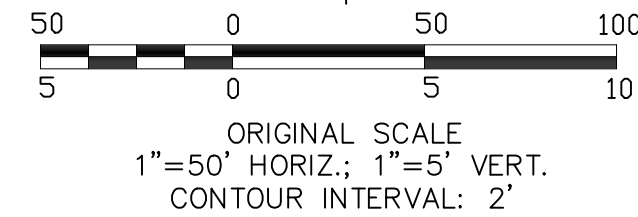
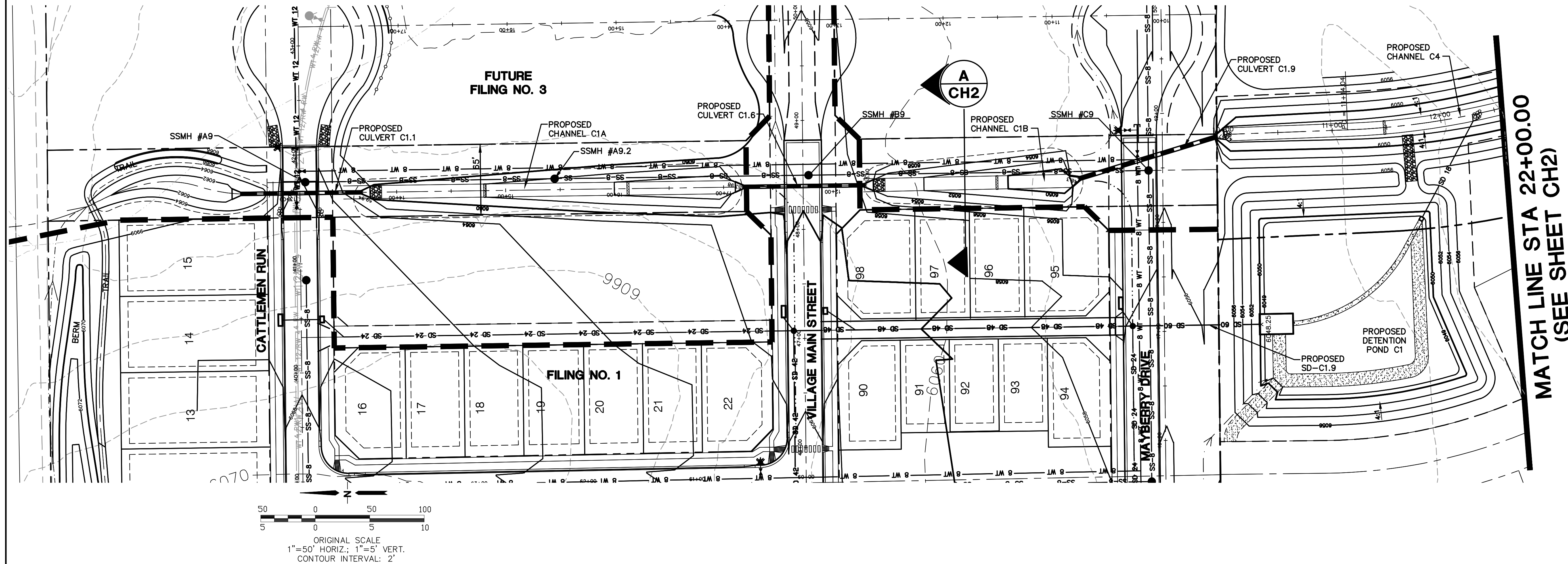
CALL UTILITY NOTIFICATION
CENTER OF COLORADO
1-800-922-1987
CALL 2-4 HOURS BEFORE YOU DIG, GRADE, OR EXCAVATE
FOR THE MARKING OF UNDERGROUND MEMBER UTILITIES

| No. | REVISION | DATE | BY |
|-----|----------------------|---------|-----|
| 1 | FINAL PLAT SUBMITTAL | 4/19/06 | JPS |
| 2 | EPC COMMENTS | 1/15/19 | JPS |
| 3 | EPC COMMENTS | 1/31/20 | JPS |

LOT GRADING NOTES & DETAILS

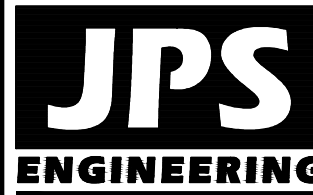
| | | | |
|--------------|---------|----------------|---------|
| HORZ. SCALE: | N/A | DRAWN: | BJJ |
| VERT. SCALE: | N/A | DESIGNED: | JPS |
| SURVEYED: | UP&E | CHECKED: | JPS |
| CREATED: | 1/14/19 | LAST MODIFIED: | 1/31/20 |
| PROJECT NO: | 090001 | MODIFIED BY: | BJJ |

SHEET: C2.1



**MATCH LINE STA 22+00.00
(SEE SHEET CH2)**

MAYBERRY, COLORADO SPRINGS - FILING NO. 1



19 E. Willamette Ave.
Colorado Springs, CO
80903

PH: 719-477-9429
FAX: 719-471-0766



CALL UTILITY NOTIFICATION
CENTER OF COLORADO
1-800-922-1987
CALL 2-BUSINESS DAYS IN ADVANCE.
BEFORE YOU DIG, GRADE, OR EXCAVATE
FOR THE MARKING OF UNDERGROUND
MEMBER UTILITIES.

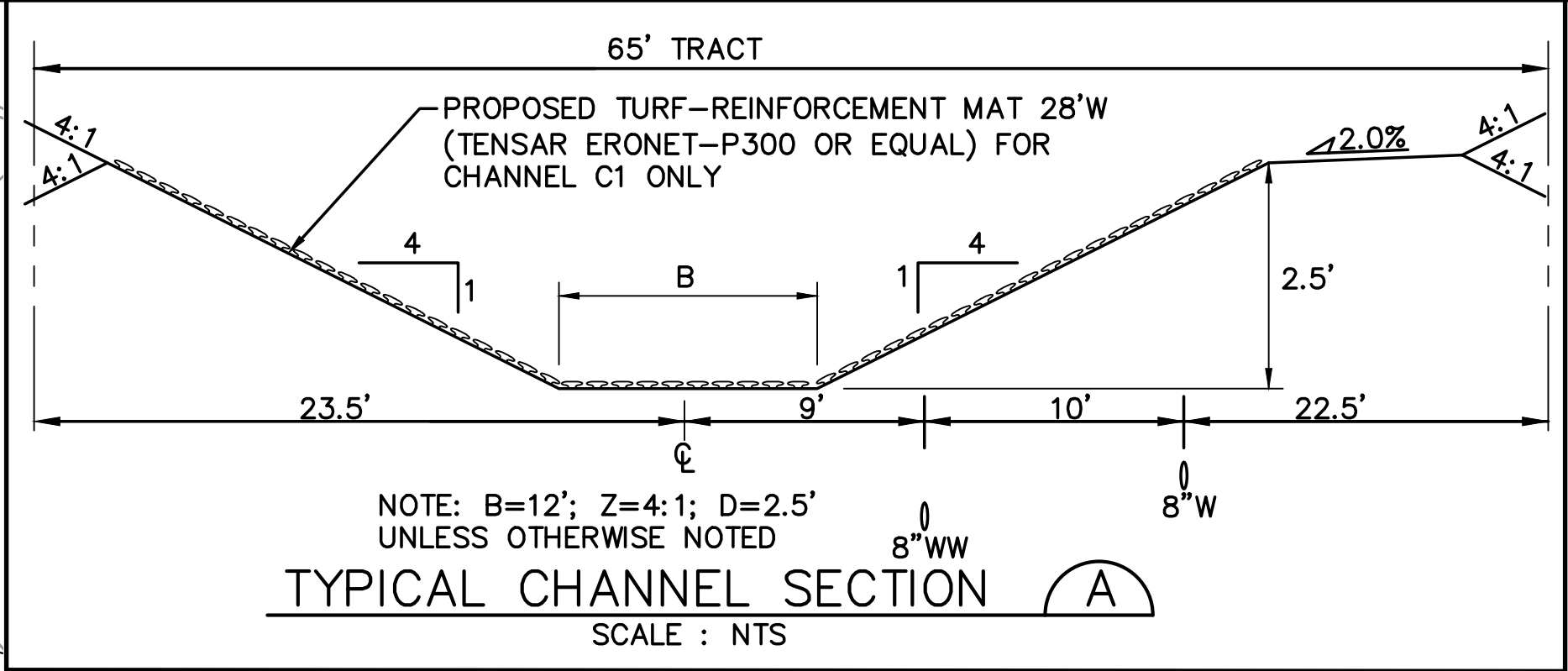
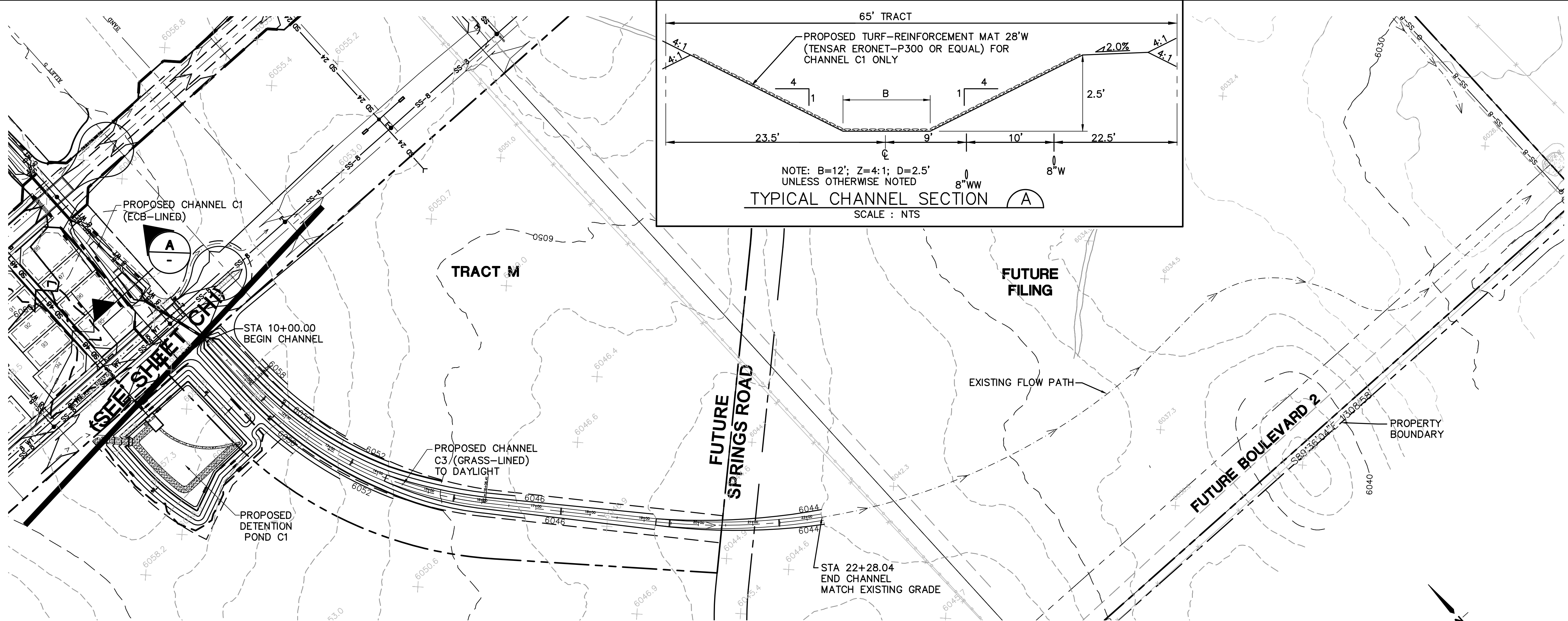
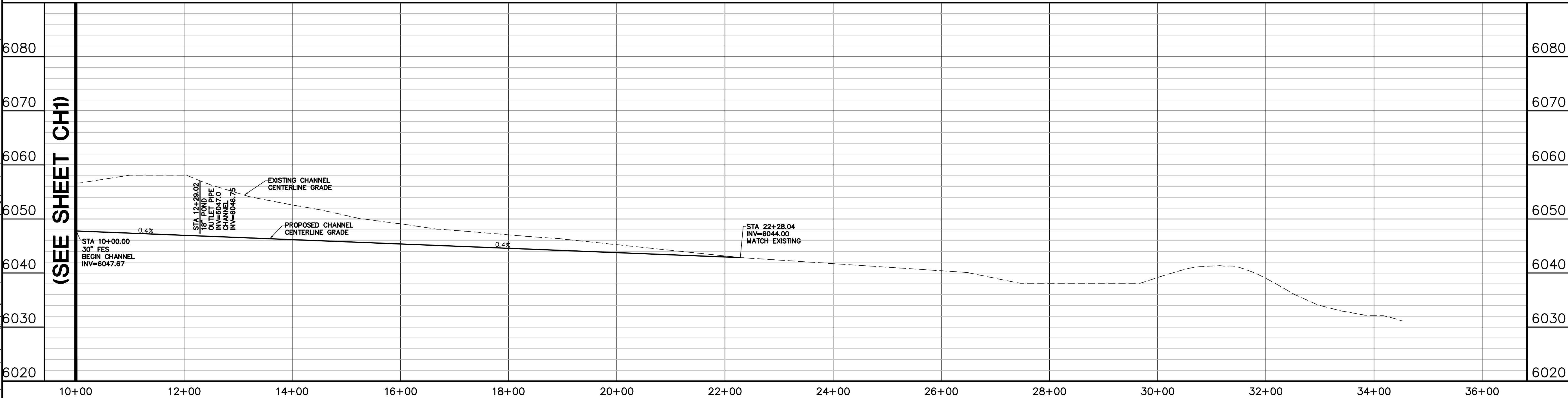
| | No. | REVISION | BY | DATE |
|--|----------|----------------|-----|---------|
| | A | 2018 SUBMITTAL | JPS | 8/22/18 |
| | C | EPC COMMENTS | JPS | 1/15/19 |
| | D | EPC COMMENTS | JPS | 9/12/19 |
| | E | EPC COMMENTS | JPS | 1/31/20 |
| | F | EPC COMMENTS | JPS | 4/17/20 |

CHANNEL C1
PLAN & PROFILE
(STA: 10+00 TO STA: 22+00.00)

| | | | |
|--------------|---------|----------------|-----------|
| HORZ. SCALE: | 1"=50' | DRAWN: | RMD |
| VERT. SCALE: | 1"=5' | DESIGNED: | JPS |
| SURVEYED: | UP&E | CHECKED: | JPS |
| CREATED: | 3/28/06 | LAST MODIFIED: | 4/17/2006 |
| PROJECT NO: | 090001 | MODIFIED BY: | BJJ |

SHEET: CH1

G:\Users\Owner\Dropbox\psprojects\090001.Elliott\CH2.dwg Apr 17, 2020 - 1:50pm

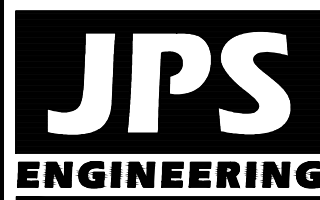


MAYBERRY, COLORADO SPRINGS - FILING NO. 1

CHANNEL C3 PLAN & PROFILE

| | |
|----------------------|------------------------|
| HORZ. SCALE: 1"=100' | DRAWN: RMD |
| VERT. SCALE: 1"=10' | DESIGNED: JPS |
| SURVEYED: UP&E | CHECKED: JPS |
| CREATED: 3/8/06 | LAST MODIFIED: 4/17/20 |
| PROJECT NO: 090001 | MODIFIED BY: BJJ |

SHEET: CH2



19 E. Willamette Ave.
Colorado Springs, CO
80903
PH: 719-477-9429
FAX: 719-471-0766



CALL UTILITY NOTIFICATION
CENTER OF COLORADO
1-800-922-1987
CALL BEFORE YOU DIG
BEFORE YOU DIG GRADE, OR EXCAVATE
FOR THE MARKING OF UNDERGROUND
MEMBER UTILITIES

| No. | REVISION | BY | DATE |
|-----|----------------|-----|---------|
| 1 | 2018 SUBMITTAL | JPS | 8/22/18 |
| 2 | EPC COMMENTS | JPS | 9/12/19 |
| 3 | EPC COMMENTS | JPS | 1/31/20 |
| 4 | EPC COMMENTS | JPS | 4/17/20 |