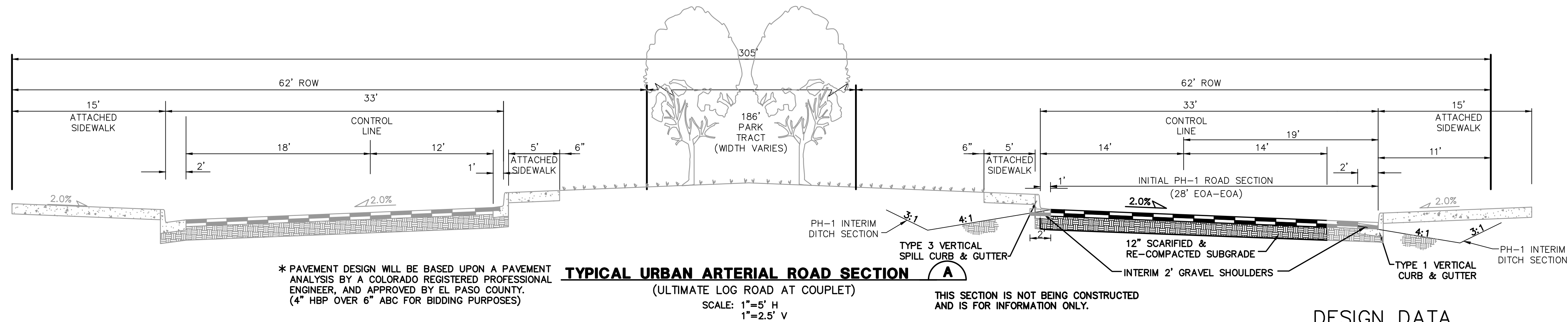


C:\Users\Owner\Dropbox\jpsprojects\090001\Elliot\TY2.dwg Apr 23, 2020 - 8:47am



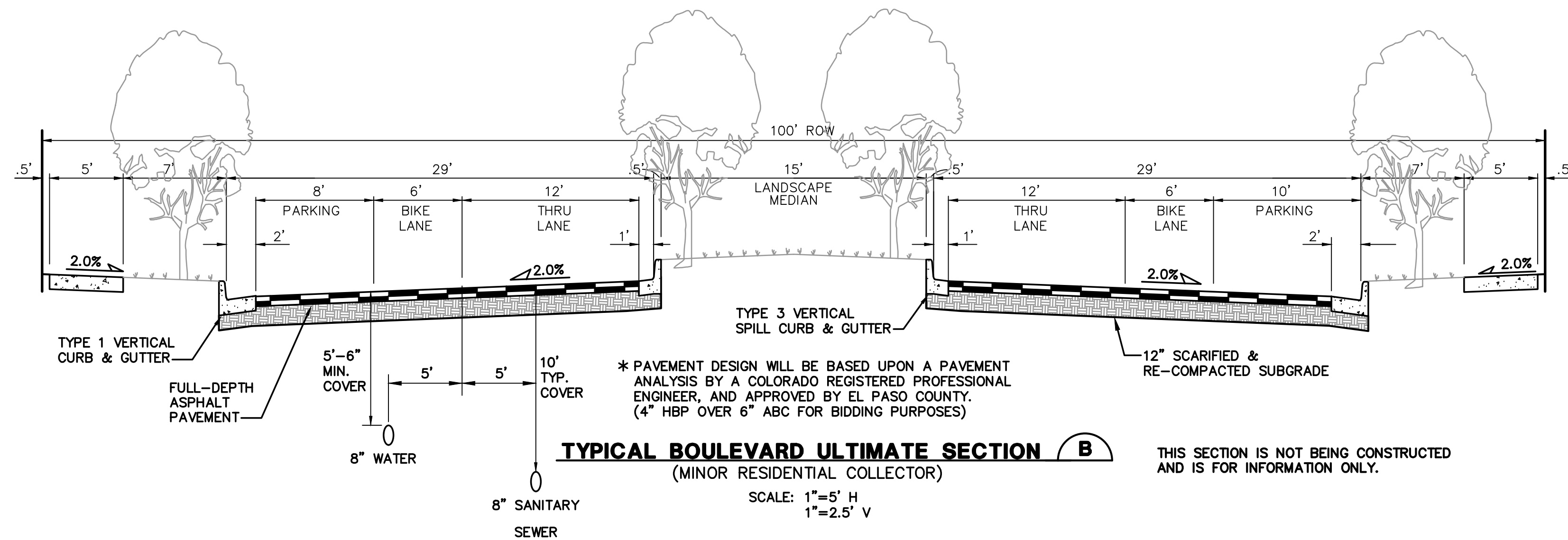
\* PAVEMENT DESIGN WILL BE BASED UPON A PAVEMENT ANALYSIS BY A COLORADO REGISTERED PROFESSIONAL ENGINEER, AND APPROVED BY EL PASO COUNTY. (4" HBP OVER 6" ABC FOR BIDDING PURPOSES)

**TYPICAL URBAN ARTERIAL ROAD SECTION (A)**  
(ULTIMATE LOG ROAD AT COUPLET)  
SCALE: 1"=5' H  
1"=2.5' V

THIS SECTION IS NOT BEING CONSTRUCTED AND IS FOR INFORMATION ONLY.

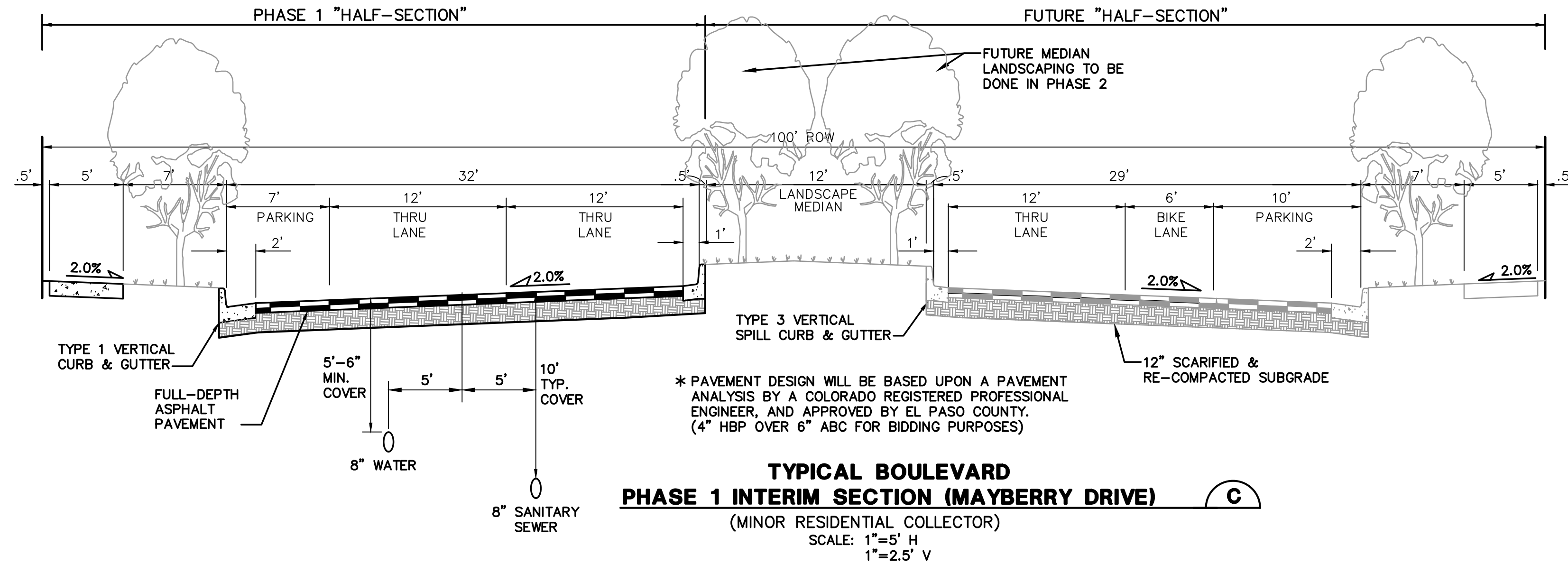
#### DESIGN DATA

ROAD CLASSIFICATION:	URBAN MINOR ARTERIAL
DESIGN SPEED:	40 MPH
POSTED SPEED:	35 MPH
MIN. HORIZONTAL RADIUS: (STANDARD)	565'
MIN. HORIZONTAL RADIUS: (PER APPROVED DEVIATION)	400'
MIN. GRADE:	0.5%
MAX. GRADE:	6.0%
MIN. K-VALUE (CREST):	44
MIN. K-VALUE (SAG):	64



**TYPICAL BOULEVARD ULTIMATE SECTION (B)**  
(MINOR RESIDENTIAL COLLECTOR)  
SCALE: 1"=5' H  
1"=2.5' V

THIS SECTION IS NOT BEING CONSTRUCTED AND IS FOR INFORMATION ONLY.



**TYPICAL BOULEVARD PHASE 1 INTERIM SECTION (MAYBERRY DRIVE) (C)**  
(MINOR RESIDENTIAL COLLECTOR)  
SCALE: 1"=5' H  
1"=2.5' V

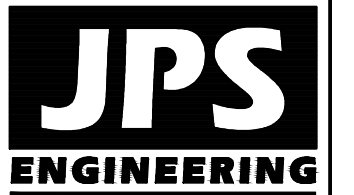
\* PAVEMENT DESIGN WILL BE BASED UPON A PAVEMENT ANALYSIS BY A COLORADO REGISTERED PROFESSIONAL ENGINEER, AND APPROVED BY EL PASO COUNTY. (4" HBP OVER 6" ABC FOR BIDDING PURPOSES)

#### DESIGN DATA

ROAD CLASSIFICATION:	URBAN COLLECTOR
DESIGN SPEED:	40 MPH
POSTED SPEED:	35 MPH
MIN. HORIZONTAL RADIUS: (STANDARD)	565'
MIN. HORIZONTAL RADIUS: (PER APPROVED DEVIATION)	400'
MIN. GRADE:	1.0%
MAX. GRADE:	8.0%
MIN. K-VALUE (CREST):	44
MIN. K-VALUE (SAG):	64

NOTE: LANE WIDTHS ARE IN ACCORDANCE WITH DEVIATIONS APPROVED AS PART OF PUD

## MAYBERRY, COLORADO SPRINGS - FILING NO. 1



19 E. Willamette Ave.  
Colorado Springs, CO  
80903  
PH: 719-477-9429  
FAX: 719-471-0766  
www.jpsengr.com



CALL UTILITY NOTIFICATION  
CENTER OF COLORADO  
1-800-922-1987  
CALL 24 HOURS BEFORE YOU DIG, GRADE, OR EXCAVATE  
FOR THE MARKING OF UNDERGROUND  
MEMBER UTILITIES

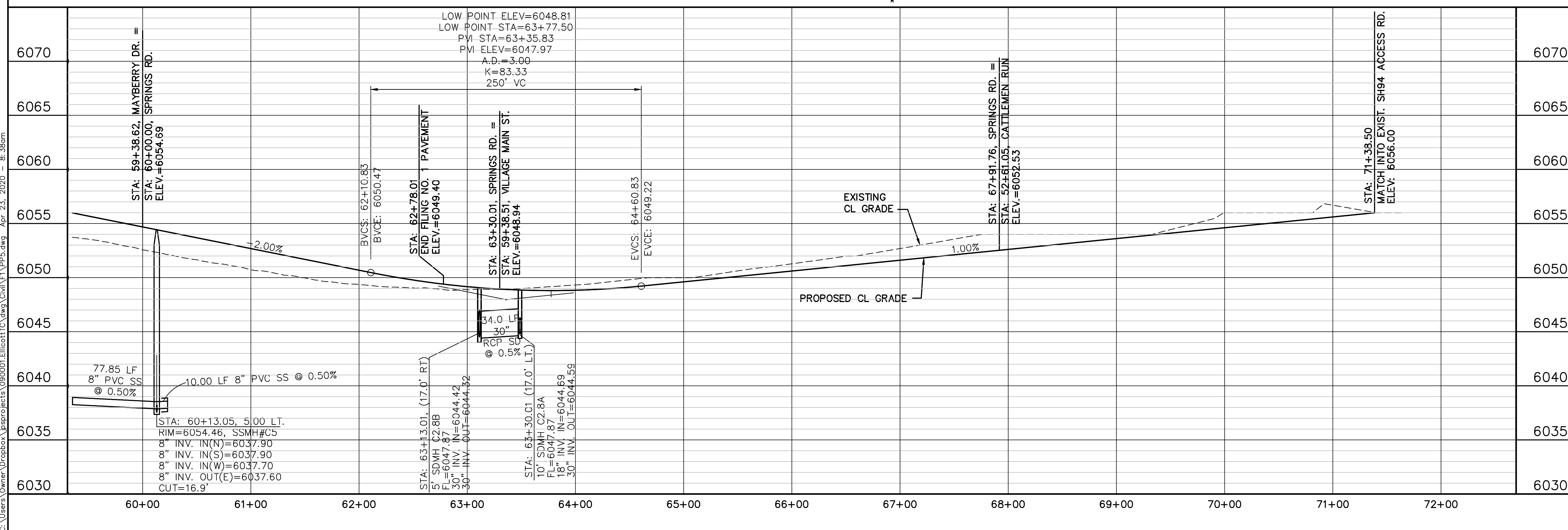
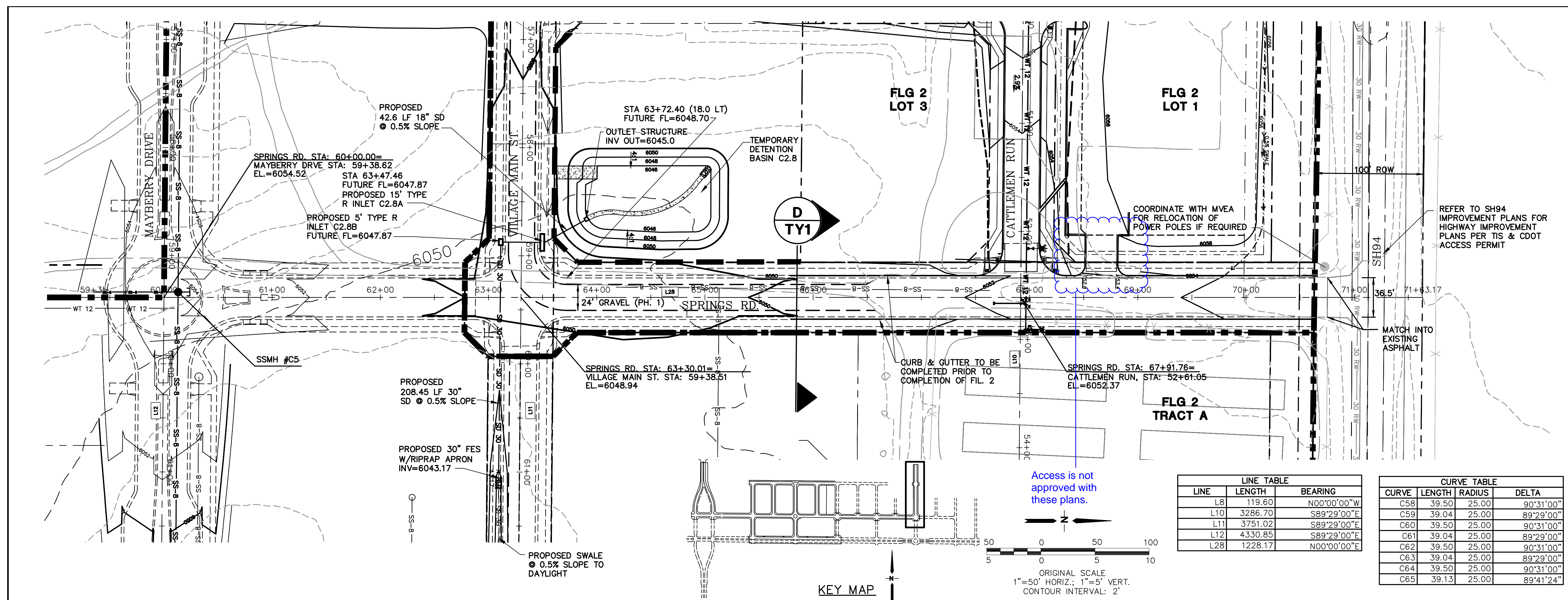
No.	REVISION	BY	DATE
1	2018 SUBMITTAL	JPS	8/22/18
2	EPC COMMENTS	JPS	1/15/19
3	EPC COMMENTS	JPS	9/12/19
4	EPC COMMENTS	JPS	1/31/20
5	EPC COMMENTS	JPS	4/17/20

### TYPICAL ROAD SECTIONS

HORZ. SCALE: 1"=5'	DRAWN: RMD
VERT. SCALE: AS SHOWN	DESIGNED: JPS
SURVEYED:	CHECKED: JPS
CREATED: 5/5/05	LAST MODIFIED: 4/17/20
PROJECT NO: 090001	MODIFIED BY: BJJ

SHEET: TY2





**MAYBERRY, COLORADO SPRINGS - FILING NO. 1**

SPRINGS ROAD  
PLAN & PROFILE  
(STA: 60+00 TO STA: 72+00.00)