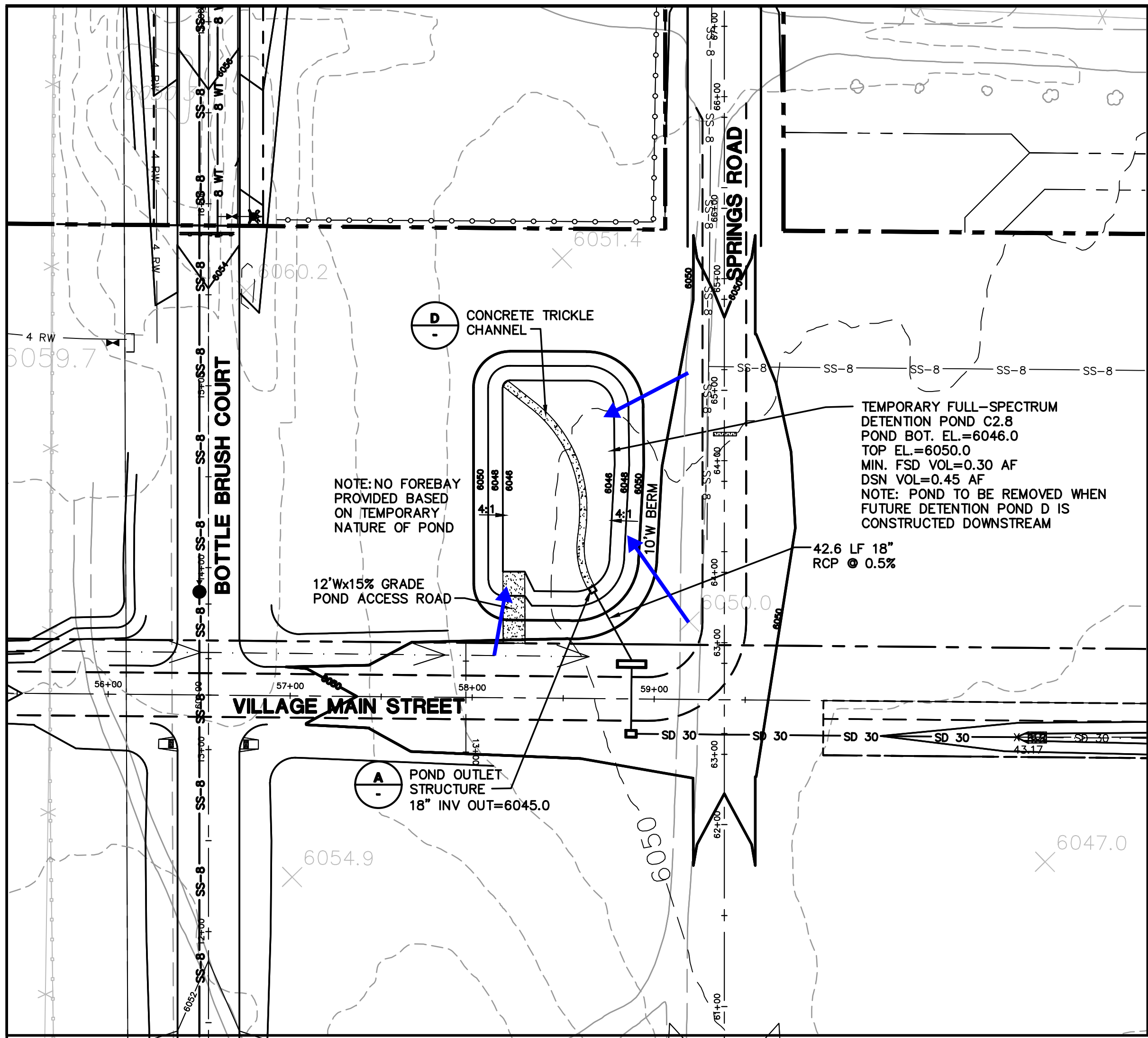
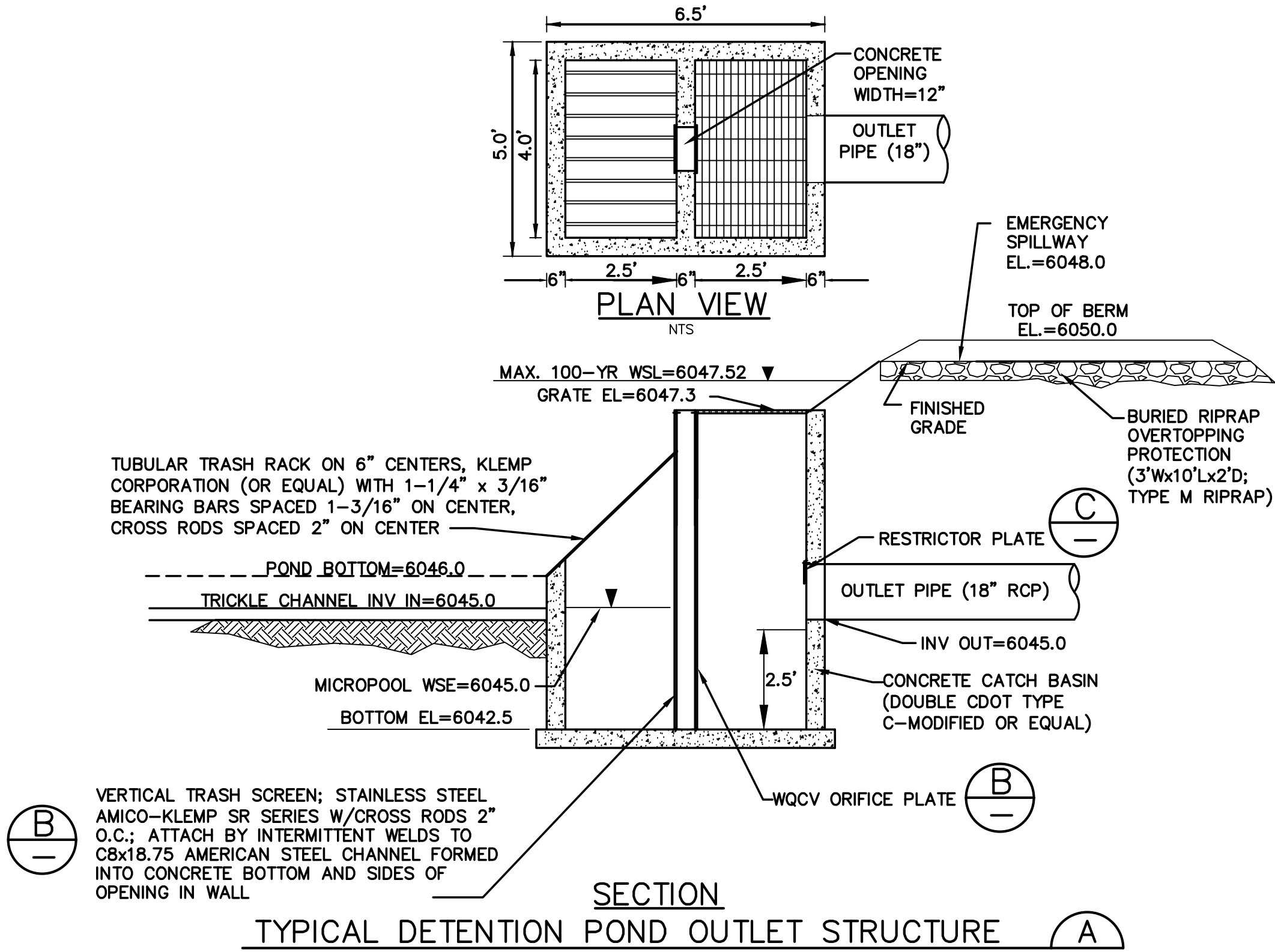
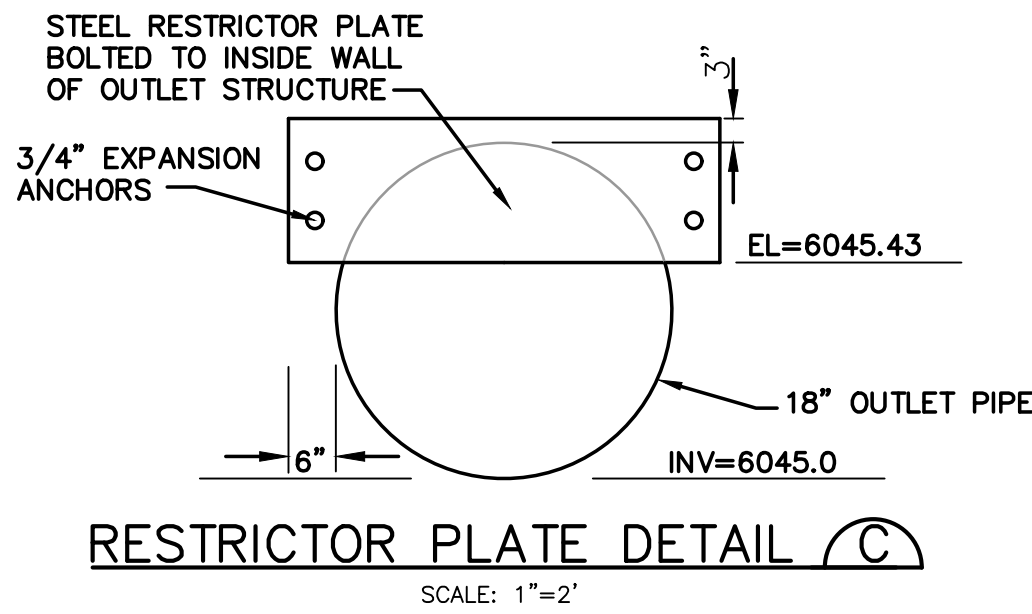
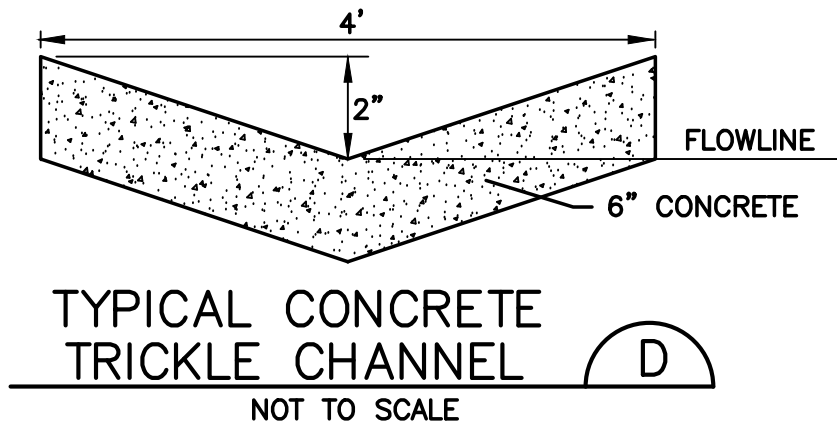


C:\Users\Owner\Dropbox\psprojects\090001\Ellicott\DWG\Civil\GEC\C1.6.dwg Apr 23, 2020 8:55am



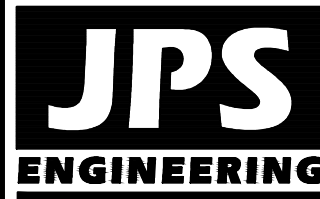
TEMPORARY POND C2.8 PLAN



- ORIFICE PLATE NOTES:
1. MINIMIZE THE NUMBER OF COLUMNS.
  2. PROVIDE GASKET MATERIAL BETWEEN THE ORIFICE PLATE AND CONCRETE.
  3. BOLT PLATE TO CONCRETE 12" MAX. ON CENTER.
- EURY AND WQCV TRASH RACKS:
1. WELL-SCREEN TRASH RACKS (FOR CIRCULAR ORIFICES) SHALL BE STAINLESS STEEL AND SHALL BE ATTACHED BY INTERMITTENT WELDS ALONG THE EDGE OF THE MOUNTING FRAME.
  2. STRUCTURAL DESIGN OF TRASH RACKS BASED ON FULL HYDROSTATIC HEAD WITH ZERO HEAD DOWNSTREAM OF THE RACK.
- OVERFLOW TRASH RACKS:
1. ALL TRASH RACKS SHALL BE MOUNTED USING STAINLESS STEEL HARDWARE AND PROVIDED WITH HINGED AND LOCKABLE OR BOLTABLE ACCESS PANELS.
  2. TRASH RACKS SHALL BE STAINLESS STEEL, ALUMINUM, OR STEEL. STEEL TRASH RACKS SHALL BE HOT DIP GALVANIZED AND MAY BE HOT POWDER COATED AFTER GALVANIZING.
  3. TRASH RACKS SHALL BE DESIGNED SUCH THAT THE DIAGONAL DIMENSION OF EACH OPENING IS SMALLER THAN THE DIAMETER OF THE OUTLET PIPE.
  4. STRUCTURAL DESIGN OF TRASH RACKS SHALL BE BASED ON FULL HYDROSTATIC HEAD WITH ZERO HEAD DOWNSTREAM OF THE RACK.

ORIFICE PLATE AND TRASH RACK  
DETAILS AND NOTES

# MAYBERRY, COLORADO SPRINGS - FILING NO. 1



19 E. Willamette Ave.  
Colorado Springs, CO  
80903  
PH: 719-477-9429  
FAX: 719-471-0766  
www.jpsengr.com



CALL UTILITY NOTIFICATION  
CENTER OF COLORADO  
1-800-922-1987  
CALL BEFORE YOU DIG  
BEFORE YOU DIG GRADE OR EXCAVATE  
FOR THE MARKING OF UNDERGROUND  
FOR THE MEMBER UTILITIES.

NO.	REVISION	BY	DATE
1	2018 SUBMITTAL	JPS	8/22/18
2	EPC COMMENTS	JPS	1/15/19
3	EPC COMMENTS	JPS	9/12/19
4	EPC COMMENTS	JPS	1/31/20
5	EPC COMMENTS	JPS	4/17/20

## POND C2.8 PLAN & DETAILS

HORZ. SCALE: 1"=50'	DRAWN: RMD
VERT. SCALE: N/A	DESIGNED: JPS
SURVEYED: UP&E	CHECKED: JPS
CREATED: 1/15/19	LAST MODIFIED: 4/17/20
PROJECT NO: 090001	MODIFIED BY: BJJ

SHEET:

C1.6