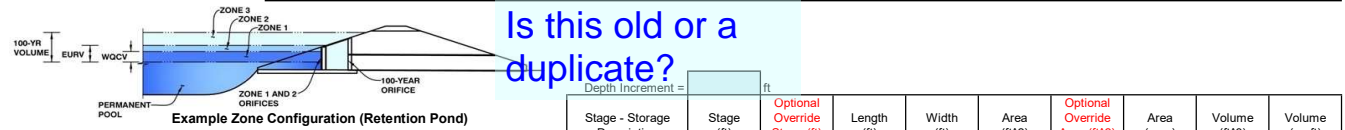


DETENTION BASIN STAGE-STORAGE TABLE BUILDER

UD-Detention, Version 3.07 (February 2017)

Project: Ellicott Town Center

Basin ID: Pond C2.8



Is this old or a duplicate?

Depth Increment = ft

Depth Increment =		ft
-------------------	--	----

Required Volume Calculation									
Top of Micropool	--	0.00	--	--	--	10	0.000		

Selected BMP Type =	EDB		Bot EL=6046.0	--	1.00	--	--	--	5,137	0.118	2,522	0.058
Watershed Area =	7.90	acres	Spillway=6048.0	--	3.00	--	--	--	8,149	0.187	15,859	0.364
Watershed Length =	900	ft	Top EL=6050.0	--	5.00	--	--	--	11,562	0.265	35,570	0.817
Watershed Slope =	0.015	ft/ft		--		--	--	--				
Watershed Imperviousness =	20.00%	percent		--		--	--	--				
Percentage Hydrologic Soil Group A =	100.0%	percent		--		--	--	--				
Percentage Hydrologic Soil Group B =	0.0%	percent		--		--	--	--				
Percentage Hydrologic Soil Groups C/D =	0.0%	percent		--		--	--	--				
Desired WQCV Drain Time =	40.0	hours		--		--	--	--				
Location for 1-hr Rainfall Depths =	User Input			--		--	--	--				
Water Quality Capture Volume (WQCV) =	0.076	acre-feet	Optional User Override 1-hr Precipitation		--	--	--	--				
Excess Urban Runoff Volume (EURV) =	0.141	acre-feet			--	--	--	--				
2-yr Runoff Volume (P1 = 1.19 in.) =	0.093	acre-feet			--	--	--	--				
5-yr Runoff Volume (P1 = 1.5 in.) =	0.126	acre-feet			--	--	--	--				
10-yr Runoff Volume (P1 = 1.75 in.) =	0.161	acre-feet			--	--	--	--				
25-yr Runoff Volume (P1 = 2 in.) =	0.222	acre-feet			--	--	--	--				
50-yr Runoff Volume (P1 = 2.25 in.) =	0.334	acre-feet			--	--	--	--				
100-yr Runoff Volume (P1 = 2.52 in.) =	0.506	acre-feet			--	--	--	--				
500-yr Runoff Volume (P1 = 3.14 in.) =	0.913	acre-feet			--	--	--	--				
Approximate 2-yr Detention Volume =	0.087	acre-feet			--	--	--	--				
Approximate 5-yr Detention Volume =	0.117	acre-feet		--	--	--	--					
Approximate 10-yr Detention Volume =	0.150	acre-feet		--	--	--	--					
Approximate 25-yr Detention Volume =	0.194	acre-feet		--	--	--	--					
Approximate 50-yr Detention Volume =	0.233	acre-feet		--	--	--	--					
Approximate 100-yr Detention Volume =	0.310	acre-feet		--	--	--	--					

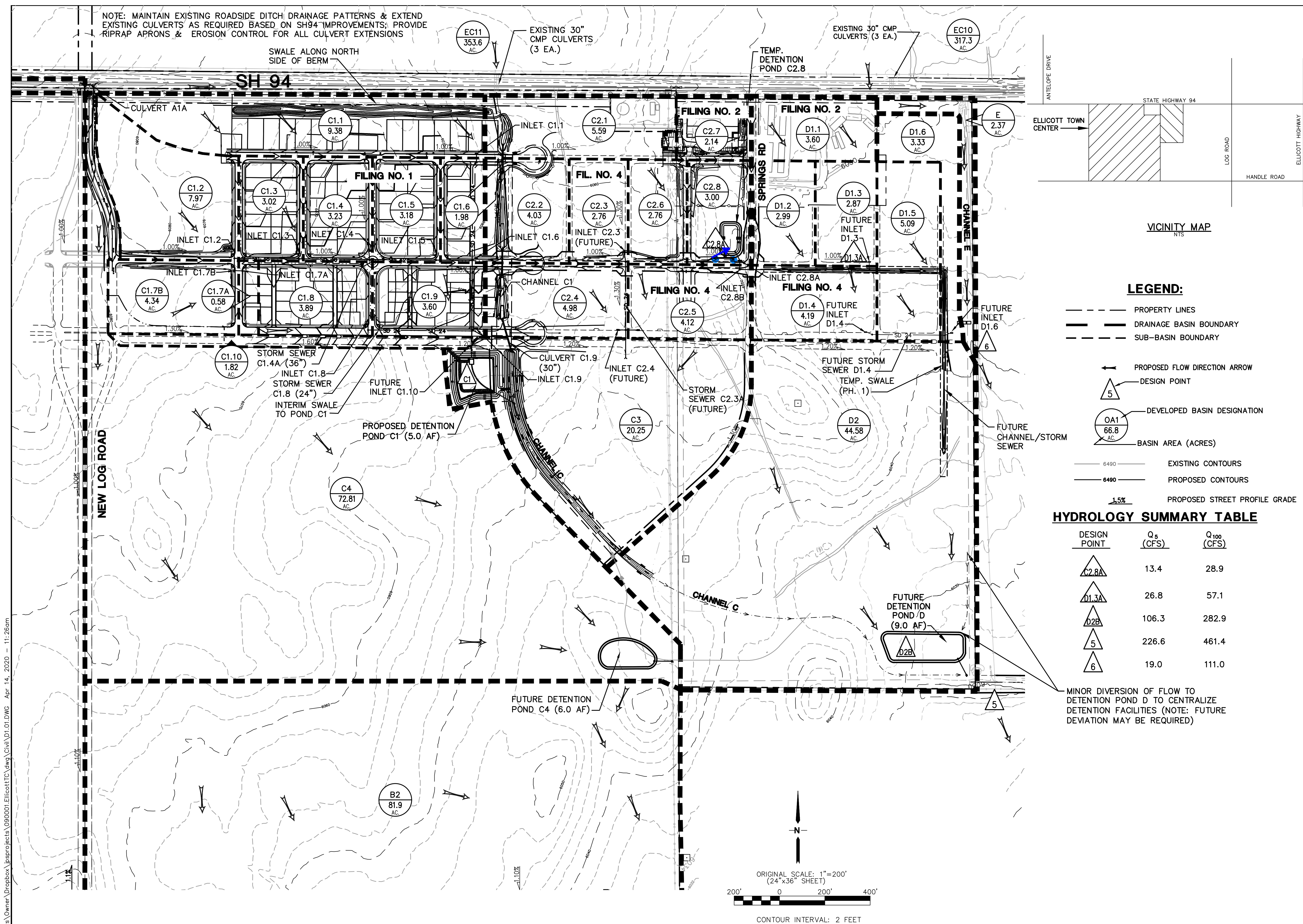
Optional User Override 1-hr Precipitation



1.19	inches
1.50	inches
1.75	inches
2.00	inches
2.25	inches
2.52	inches
3.14	inches

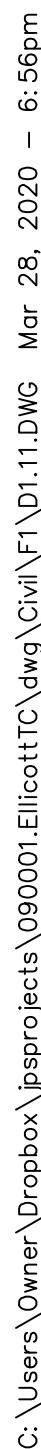
Stage-Storage Calculation		--		--	--	--			
---------------------------	--	----	--	----	----	----	--	--	--

Zone 1 Volume (WQCV) =	0.076	acre-feet
Zone 2 Volume (EURV - Zone 1) =	0.065	acre-feet
Zone 3 Volume (100-year - Zones 1 & 2) =	0.170	acre-feet
Total Detention Basin Volume =	0.310	acre-feet

[illegible]



<h1 style="text-align: center;">MAYBERRY, COLORADO SPRINGS</h1>																																															
		<p>19 E. Willamette Ave. Colorado Springs, CO 80903</p> <p>PH: 719-477-9429 FAX: 719-471-0766 www.jpseng.com</p>																																													
<h2 style="text-align: center;">PHASE 1 DEVELOPED DRAINAGE PLAN</h2>																																															
		<p style="text-align: center;">CALL UTILITY NOTIFICATION CENTER OF COLORADO 1-800-922-1987</p> <p style="text-align: center;">CALL 2-BUSINESS DAYS IN ADVANCE BEFORE YOU DIG OR EXCAVATE FOR THE MARKING OF UNDERGROUND MEMBER UTILITIES.</p>																																													
<table border="1"> <thead> <tr> <th>No.</th> <th>REVISION</th> <th>BY</th> <th>DATE</th> </tr> </thead> <tbody> <tr><td> </td><td> </td><td> </td><td> </td></tr> <tr><td> </td><td> </td><td> </td><td> </td></tr> <tr><td> </td><td> </td><td> </td><td> </td></tr> <tr><td> </td><td> </td><td> </td><td> </td></tr> <tr><td> </td><td> </td><td> </td><td> </td></tr> <tr><td> </td><td> </td><td> </td><td> </td></tr> <tr><td> </td><td> </td><td> </td><td> </td></tr> <tr><td> </td><td> </td><td> </td><td> </td></tr> <tr><td> </td><td> </td><td> </td><td> </td></tr> <tr><td> </td><td> </td><td> </td><td> </td></tr> </tbody> </table>		No.	REVISION	BY	DATE																																										
No.	REVISION	BY	DATE																																												
HORZ. SCALE: 1"=200' VERT. SCALE: N/A SURVEYED: UP & E CREATED: 12/03/00 PROJECT NO: 090001		DRAWN: RMD DESIGNED: JPS CHECKED: JPS LAST MODIFIED: 4/14/20 MODIFIED BY: BJJ																																													
SHEET:		D1.01																																													



JPS
ENGINEERING

19 E. Willamette Ave.
Colorado Springs, CO
80903

PH: 719-477-9429
FAX: 719-471-0766
www.jpsegr.com



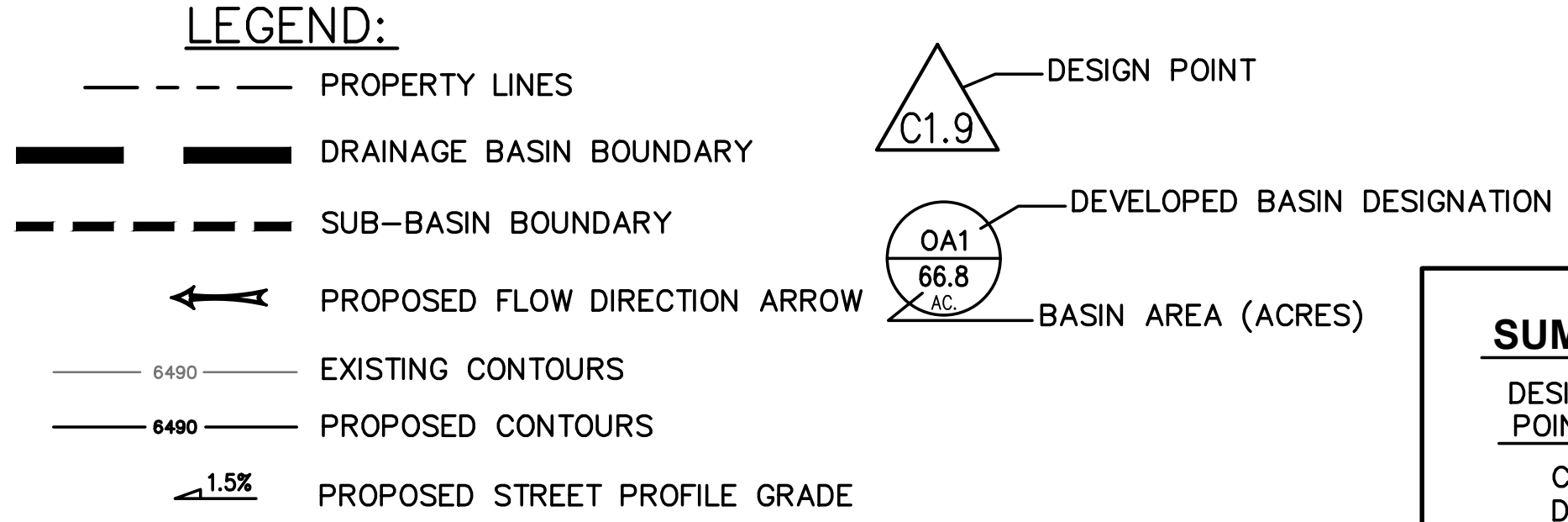
**CALL UTILITY NOTIFICATION
CENTER OF COLORADO
1-800-922-1987**
CALL 2-BUSINESS DAYS IN ADVANCE
BEFORE YOU DIG, GRADE, OR EXCAVATE
FOR THE MARKING OF UNDERGROUND
MEMBER UTILITIES.

EAST SITE / FILING NO. 2 DEVELOPED DRAINAGE PLAN

HORZ. SCALE:	1"=100'
VERT. SCALE:	N/A
SURVEYED:	RAMPART
CREATED:	3/28/19
PROJECT NO:	090001

DRAWN:	RMD
DESIGNED:	JPS
CHECKED:	JPS
LAST MODIFIED:	3/30/20
MODIFIED BY:	BJJ

SHEET: **D1.12**



SUMMARY HYDROLOGY TABLE		
DESIGN POINT	Q 5 (CFS)	Q100 (CFS)
C2.8A	13.4	28.9
D1.1	10.4	20.8
D1.3A	26.8	57.1