

CANYON CREEK RANCH PLAT CLOSURE SHEET

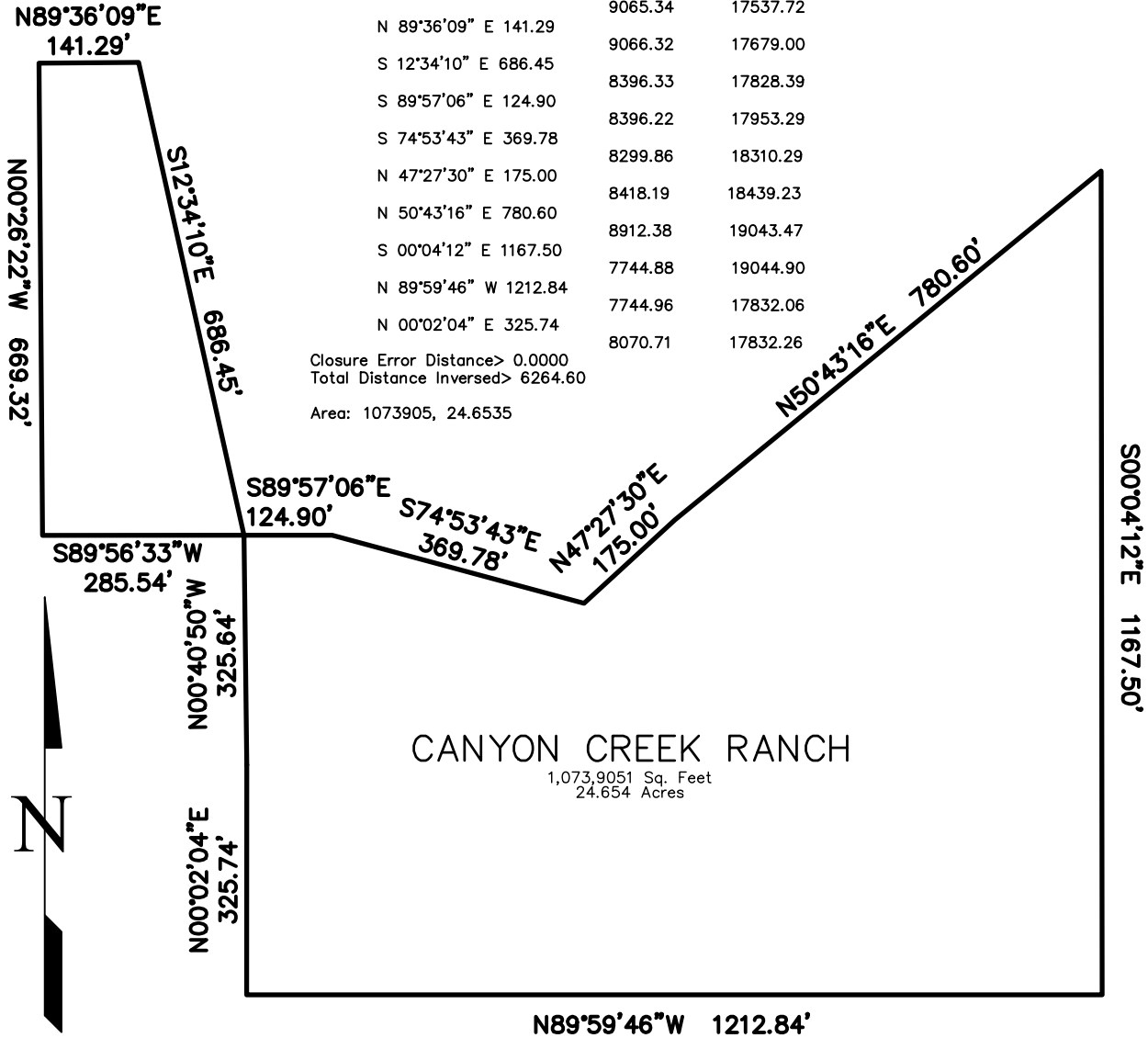
Inverse With Area

Thu Dec 16 16:15:35 2021


PntNo	Bearing	Distance	Northing	Easting	Description
	N 00°40'50" W	325.64	8070.71	17832.26	
	S 89°56'33" W	285.54	8396.33	17828.39	
	N 00°26'22" W	669.32	8396.04	17542.85	
	N 89°36'09" E	141.29	9065.34	17537.72	
	S 12°34'10" E	686.45	9066.32	17679.00	
	S 89°57'06" E	124.90	8396.33	17828.39	
	S 74°53'43" E	369.78	8396.22	17953.29	
	N 47°27'30" E	175.00	8299.86	18310.29	
	N 50°43'16" E	780.60	8418.19	18439.23	
	S 00°04'12" E	1167.50	8912.38	19043.47	
	N 89°59'46" W	1212.84	7744.88	19044.90	
	N 00°02'04" E	325.74	7744.96	17832.06	
			8070.71	17832.26	

Closure Error Distance > 0.0000
Total Distance Inversed > 6264.60

Area: 1073905, 24.6535



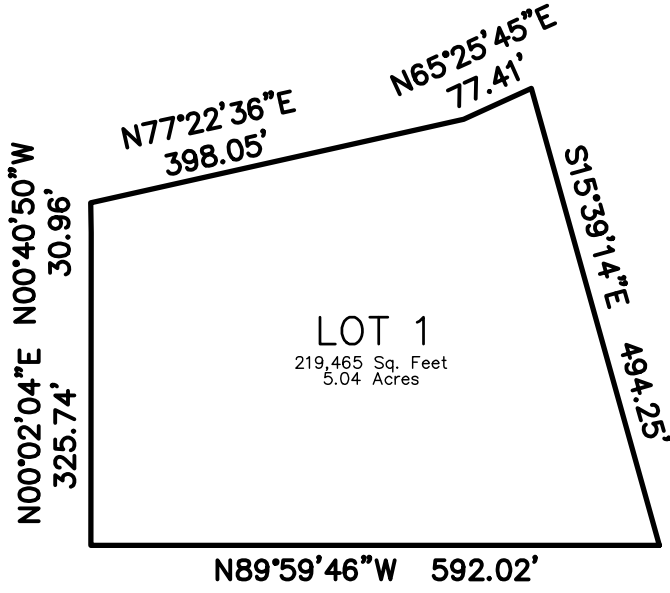
SCALE: 1" = 250'

 PLANNING · SURVEYING www.ldc-inc.com · TEL: (719) 528-6133 · FAX: (719) 528-6848 3898 MAIZELAND ROAD · COLORADO SPRINGS, CO 80909	REVISIONS			
	NO.	DESCRIPTION	DATE	BY
PROJECT NUMBER				
21002				
DWN BY: DAS	DATE: 12/17/2021			
CK'D BY: DLK	REF. NO.: 21002CLOSURE			

**CANYON CREEK RANCH
LOT 1 CLOSURE SHEET**



SCALE: 1" = 200'



LOT 1
219,465 Sq. Feet
5.04 Acres

Inverse With Area Fri Sep 3 13:24:04 2021

PntNo	Bearing	Distance	Northing	Easting	Description
	N 89°59'46" W	592.02	9343.21	16227.15	
	N 00°02'04" E	325.74	9343.25	15635.13	
	N 00°40'50" W	30.96	9669.00	15635.32	
	N 77°22'36" E	398.05	9699.96	15634.96	
	N 65°25'45" E	77.41	9786.95	16023.39	
	S 15°39'14" E	494.25	9819.13	16093.78	
			9343.21	16227.15	

Closure Error Distance> 0.0000
Total Distance Inversed> 1918.44
Area: 219465, 5.0382



PLANNING · SURVEYING

www.ldc-inc.com · TEL: (719) 528-6133 · FAX: (719) 528-6848

3898 MAIZELAND ROAD · COLORADO SPRINGS, CO 80909

DWN BY: DAS	DATE: 12/17/2021
CK'D BY: DLK	REF. NO.: 21002CLOSURE

REVISIONS

NO.	DESCRIPTION	DATE	BY

PROJECT NUMBER
21002

**CANYON CREEK RANCH
LOT 2 CLOSURE SHEET**



SCALE: 1" = 200'



Inverse With Area

Fri Sep 3 13:23:48 2021

PntNo	Bearing	Distance	Northing	Easting	Description
			9819.13	16093.78	
	N 65°25'45" E	313.46	9949.48	16378.86	
	N 43°12'20" E	120.81	10037.53	16461.57	
	S 07°13'23" E	405.86	9634.90	16512.59	
	S 23°01'55" E	316.98	9343.18	16636.61	
	N 89°59'46" W	409.46	9343.21	16227.15	
	N 15°39'14" W	494.25	9819.13	16093.78	

Closure Error Distance > 0.0000 Error Bearing > N 90°00'00" E
 Closure Precision > 1 in 253334852288333.7 Total Distance Inversed > 2060.82

Area: 219548, 5.0401



PLANNING · SURVEYING

www.ldc-inc.com · TEL: (719) 528-6133 · FAX: (719) 528-6848

3898 MAIZELAND ROAD · COLORADO SPRINGS, CO 80909

DWN BY: DAS	DATE: 12/17/2021
CK'D BY: DLK	REF. NO.: 21002CLOSURE

REVISIONS

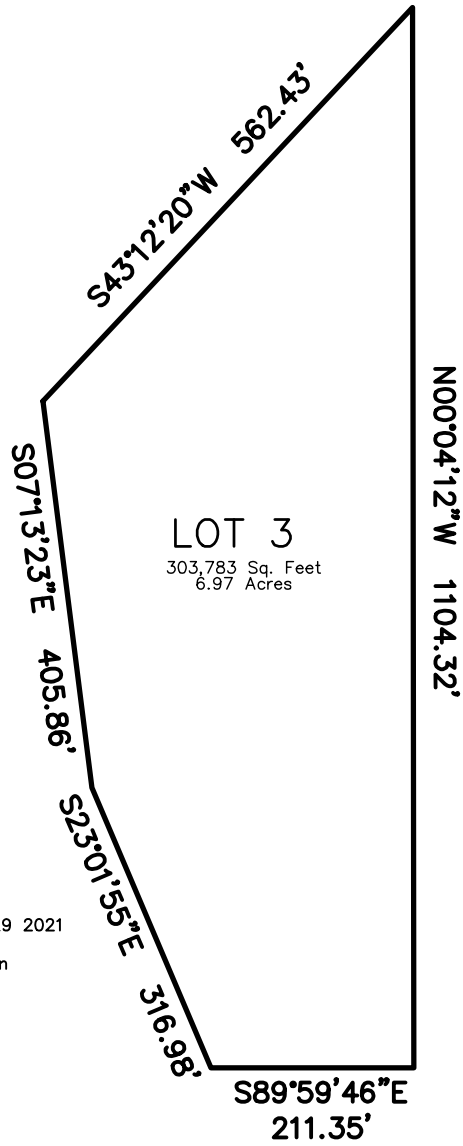
NO.	DESCRIPTION	DATE	BY

**PROJECT NUMBER
21002**

CANYON CREEK RANCH
LOT 3 CLOSURE SHEET



SCALE: 1" = 200'



LOT 3
303,783 Sq. Feet
6.97 Acres

Inverse With Area Fri Sep 3 13:23:29 2021

PntNo	Bearing	Distance	Northing	Easting	Description
			10037.53	16461.57	
	S 07°13'23" E	405.86	9634.90	16512.59	
	S 23°01'55" E	316.98	9343.18	16636.61	
	S 89°59'46" E	211.35	9343.17	16847.96	
	N 00°04'12" W	1104.32	10447.49	16846.62	
	S 43°12'20" W	562.43	10037.53	16461.57	

Closure Error Distance> 0.0000 Error Bearing> N 90°00'00" E
 Closure Precision> 1 in 505538605623847.7 Total Distance Inversed> 2600.93
 Area: 303783, 6.9739



PLANNING · SURVEYING

www.ldc-inc.com · TEL: (719) 528-6133 · FAX: (719) 528-6848

3898 MAIZELAND ROAD · COLORADO SPRINGS, CO 80909

DWN BY: DAS	DATE: 12/17/2021
CK'D BY: DLK	REF. NO.: 21002CLOSURE

REVISIONS

NO.	DESCRIPTION	DATE	BY

PROJECT NUMBER
21002

CANYON CREEK RANCH TRACT A CLOSURE SHEET

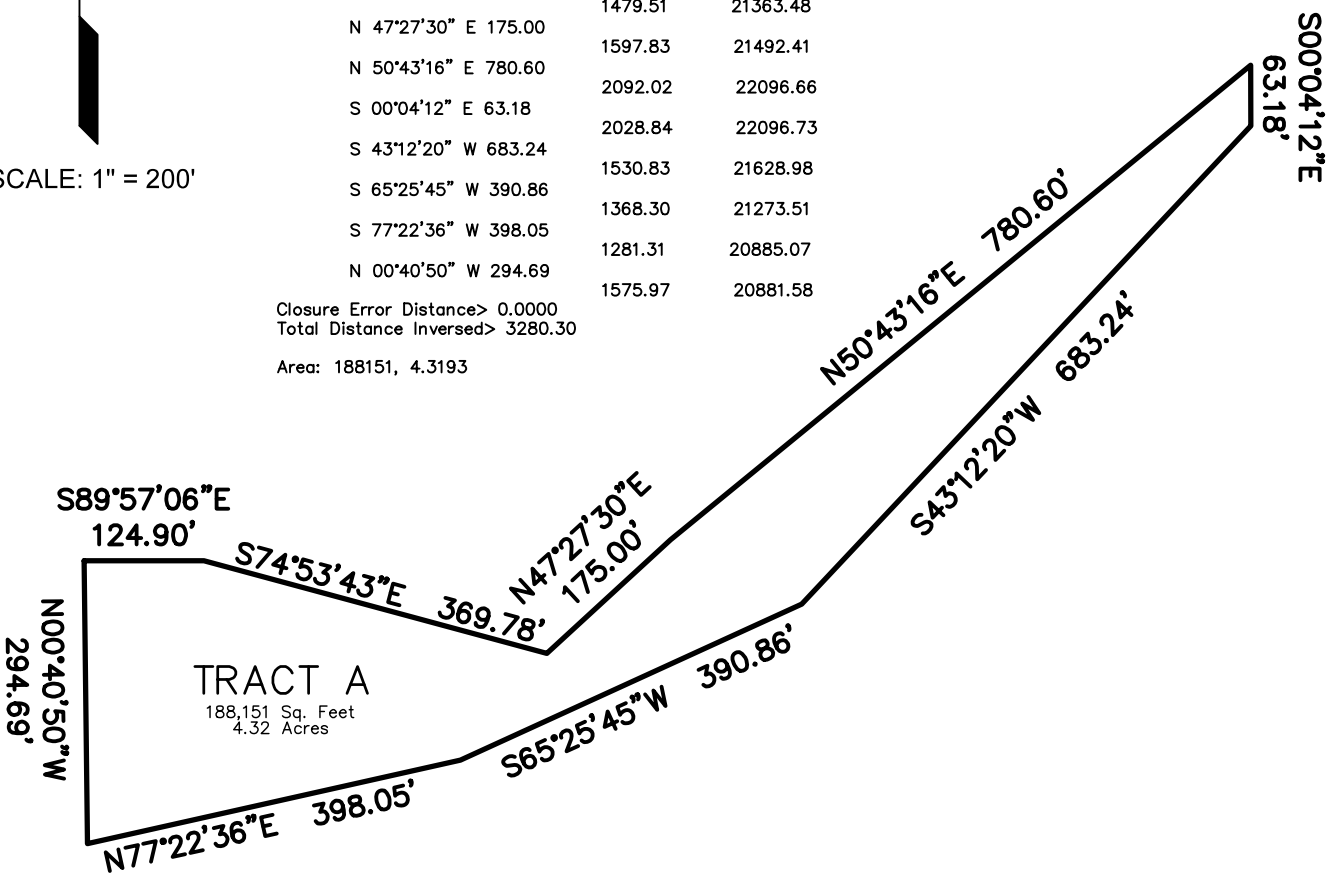


SCALE: 1" = 200'

PntNo	Bearing	Distance	Northing	Easting	Description
			1575.97	20881.58	
S	89°57'06"	E 124.90	1575.86	21006.47	
S	74°53'43"	E 369.78	1479.51	21363.48	
N	47°27'30"	E 175.00	1597.83	21492.41	
N	50°43'16"	E 780.60	2092.02	22096.66	
S	00°04'12"	E 63.18	2028.84	22096.73	
S	43°12'20"	W 683.24	1530.83	21628.98	
S	65°25'45"	W 390.86	1368.30	21273.51	
S	77°22'36"	W 398.05	1281.31	20885.07	
N	00°40'50"	W 294.69	1575.97	20881.58	

Closure Error Distance > 0.0000
 Total Distance Inversed > 3280.30
 Area: 188151, 4.3193

Fri Dec 17 10:12:41 2021



S89°57'06"E
124.90'
N00°40'50"W
294.69'

S74°53'43"E 369.78'
N47°27'30"E 175.00'

S65°25'45"W 390.86'

N77°22'36"E 398.05'

N50°43'16"E 780.60'

S43°12'20"W 683.24'

S00°04'12"E
63.18'



PLANNING · SURVEYING
www.ldc-inc.com · TEL: (719) 528-6133 · FAX: (719) 528-6848
3898 MAIZELAND ROAD · COLORADO SPRINGS, CO 80909

DWN BY: DAS DATE: 12/17/2021
CK'D BY: DLK REF. NO.: 21002CLOSURE

REVISIONS

NO.	DESCRIPTION	DATE	BY

PROJECT NUMBER
21002

CANYON CREEK RANCH TRACT B CLOSURE SHEET



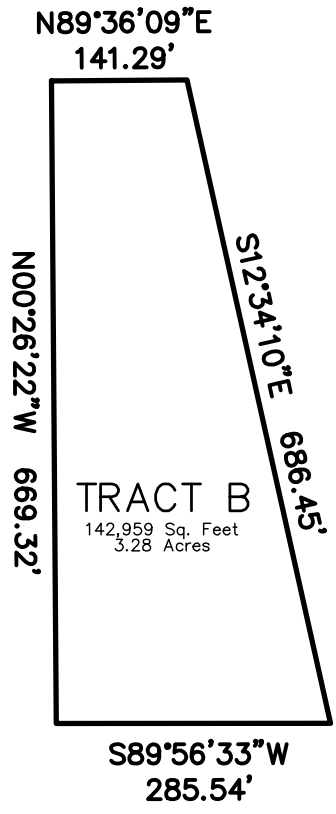
PntNo	Bearing	Distance	Northing	Easting	Description
	N 89°36'09" E	141.29	11250.64	17689.48	
	S 12°34'10" E	686.45	11251.62	17830.76	
	S 89°56'33" W	285.54	10581.62	17980.15	
	N 00°26'22" W	669.32	10581.33	17694.61	
			11250.64	17689.48	

Fri Sep 3 13:22:11 2021

Closure Error Distance > 0.0000 Error Bearing > N 90°00'00" E
 Closure Precision > 1 in 271800625745538.9 Total Distance Inversed > 1782.59

Area: 142959, 3.2819

SCALE: 1" = 200'



PLANNING · SURVEYING

www.ldc-inc.com · TEL: (719) 528-6133 · FAX: (719) 528-6848
 3898 MAIZELAND ROAD · COLORADO SPRINGS, CO 80909

DWN BY: DAS	DATE: 12/17/2021
CK'D BY: DLK	REF. NO.: 21002CLOSURE

REVISIONS

NO.	DESCRIPTION	DATE	BY

PROJECT NUMBER
21002