

# ROCKYTOP MOTEL & CAMPGROUND

## TOWN OF GREEN MOUNTAIN FALLS, EL PASO COUNTY, COLORADO

### GRADING AND EROSION CONTROL PLANS

#### GRADING AND EROSION CONTROL STANDARD NOTES

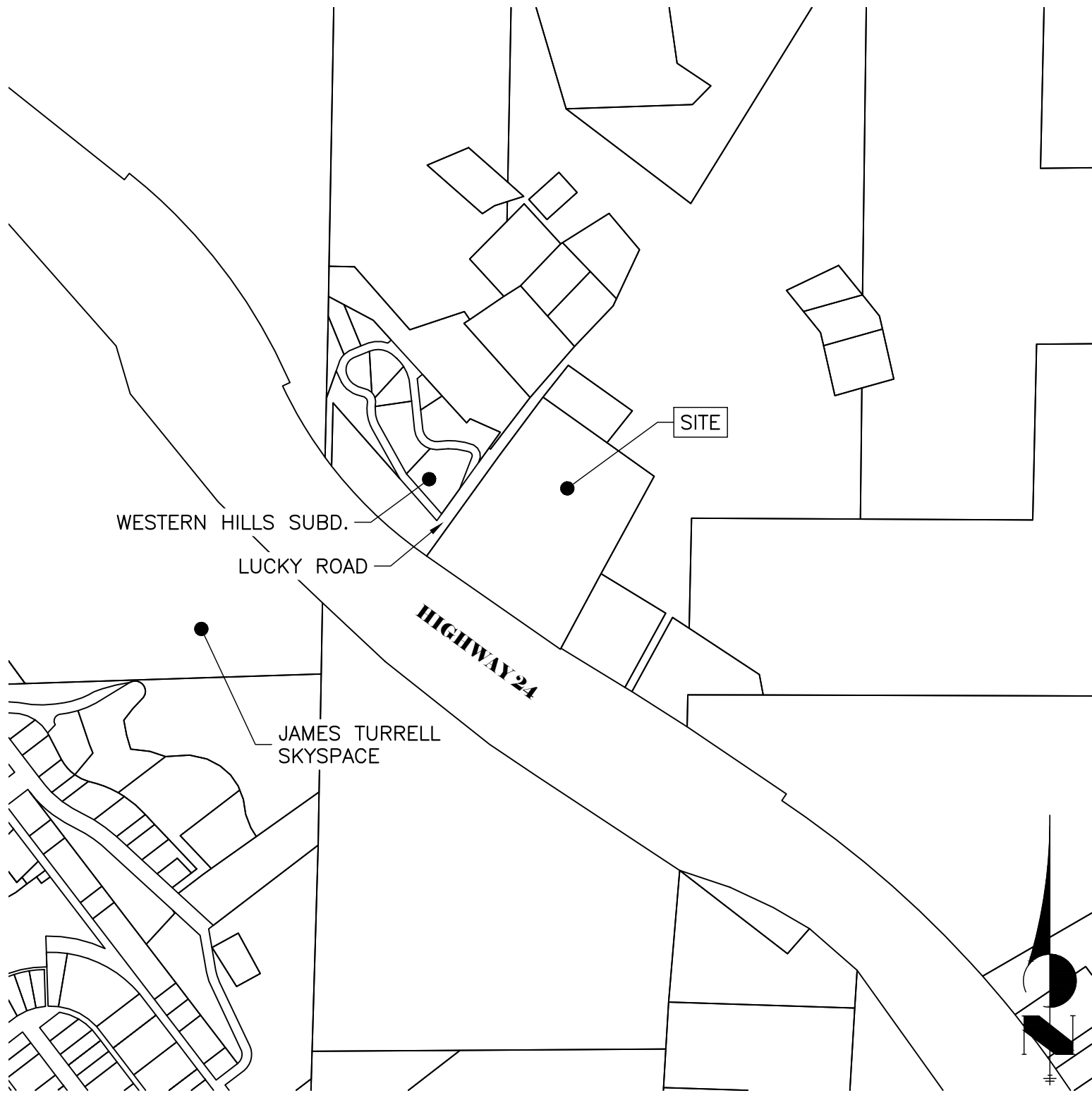
- STORMWATER DISCHARGES FROM CONSTRUCTION SITES SHALL NOT CAUSE OR THREATEN TO CAUSE POLLUTION, CONTAMINATION, OR DEGRADATION OF STATE WATERS. ALL WORK AND EARTH DISTURBANCE SHALL BE DONE IN A MANNER THAT MINIMIZES POLLUTION OF ANY ON-SITE OR OFF-SITE WATERS, INCLUDING WETLANDS.
- NOTWITHSTANDING ANYTHING DEPICTED IN THESE PLANS IN WORDS OR GRAPHIC REPRESENTATION, ALL DESIGN AND CONSTRUCTION RELATED TO ROADS, STORM DRAINAGE AND EROSION CONTROL SHALL CONFORM TO THE STANDARDS AND REQUIREMENTS OF THE MOST RECENT VERSION OF THE RELEVANT ADOPTED EL PASO COUNTY STANDARDS, INCLUDING THE LAND DEVELOPMENT CODE, THE ENGINEERING CRITERIA MANUAL, THE DRAINAGE CRITERIA MANUAL, AND THE DRAINAGE CRITERIA MANUAL VOLUME 2. ANY DEVIATIONS FROM REGULATIONS AND STANDARDS MUST BE REQUESTED, AND APPROVED, IN WRITING.
- A SEPARATE STORMWATER MANAGEMENT PLAN (SWMP) FOR THIS PROJECT SHALL BE COMPLETED AND AN EROSION AND STORMWATER QUALITY CONTROL PERMIT (ESQCP) ISSUED PRIOR TO COMMENCING CONSTRUCTION. MANAGEMENT OF THE SWMP DURING CONSTRUCTION IS THE RESPONSIBILITY OF THE DESIGNATED QUALIFIED STORMWATER MANAGER OR CERTIFIED EROSION CONTROL INSPECTOR. THE SWMP SHALL BE LOCATED ON SITE AT ALL TIMES DURING CONSTRUCTION AND SHALL BE KEPT UP TO DATE WITH WORK PROGRESS AND CHANGES IN THE FIELD.
- ONCE THE ESQCP IS APPROVED AND A "NOTICE TO PROCEED" HAS BEEN ISSUED, THE CONTRACTOR MAY INSTALL THE INITIAL STAGE EROSION AND SEDIMENT CONTROL MEASURES AS INDICATED ON THE APPROVED GEC. A PRECONSTRUCTION MEETING BETWEEN THE CONTRACTOR, ENGINEER, AND EL PASO COUNTY WILL BE HELD PRIOR TO ANY CONSTRUCTION. IT IS THE RESPONSIBILITY OF THE APPLICANT TO COORDINATE THE MEETING TIME AND PLACE WITH COUNTY STAFF.
- CONTROL MEASURES MUST BE INSTALLED PRIOR TO COMMENCEMENT OF ACTIVITIES THAT COULD CONTRIBUTE POLLUTANTS TO STORMWATER. CONTROL MEASURES FOR ALL SLOPES, CHANNELS, DITCHES, AND DISTURBED LAND AREAS SHALL BE INSTALLED IMMEDIATELY UPON COMPLETION OF THE DISTURBANCE.
- ALL TEMPORARY SEDIMENT AND EROSION CONTROL MEASURES SHALL BE MAINTAINED AND REMAIN IN EFFECTIVE OPERATING CONDITION UNTIL PERMANENT SOIL EROSION CONTROL MEASURES ARE IMPLEMENTED AND FINAL STABILIZATION IS ESTABLISHED. ALL PERSONS ENGAGED IN LAND DISTURBANCE ACTIVITIES SHALL ASSESS THE ADEQUACY OF CONTROL MEASURES AT THE SITE AND IDENTIFY IF CHANGES TO THOSE CONTROL MEASURES ARE NEEDED TO ENSURE THE CONTINUED EFFECTIVE PERFORMANCE OF THE CONTROL MEASURES. ALL CHANGES TO TEMPORARY SEDIMENT AND EROSION CONTROL MEASURES MUST BE INCORPORATED INTO THE STORMWATER MANAGEMENT PLAN.
- TEMPORARY STABILIZATION SHALL BE IMPLEMENTED ON DISTURBED AREAS AND STOCKPILES WHERE GROUND DISTURBING CONSTRUCTION ACTIVITY HAS PERMANENTLY CEASED OR TEMPORARILY CEASED FOR LONGER THAN 14 DAYS.
- FINAL STABILIZATION MUST BE IMPLEMENTED AT ALL APPLICABLE CONSTRUCTION SITES. FINAL STABILIZATION IS ACHIEVED WHEN ALL GROUND DISTURBING ACTIVITIES ARE COMPLETE AND ALL DISTURBED AREAS EITHER HAVE A UNIFORM VEGETATIVE COVER WITH INDIVIDUAL PLANT DENSITY OF 70 PERCENT OF PRE-DISTURBANCE LEVELS ESTABLISHED OR EQUIVALENT PERMANENT ALTERNATIVE STABILIZATION METHOD IS IMPLEMENTED. ALL TEMPORARY SEDIMENT AND EROSION CONTROL MEASURES SHALL BE REMOVED UPON FINAL STABILIZATION AND BEFORE PERMIT CLOSURE.
- ALL PERMANENT STORMWATER MANAGEMENT FACILITIES SHALL BE INSTALLED AS DESIGNED IN THE APPROVED PLANS. ANY PROPOSED CHANGES THAT AFFECT THE FUNCTION OF PERMANENT STORMWATER MANAGEMENT STRUCTURES MUST BE APPROVED BY THE EGM ADMINISTRATOR PRIOR TO IMPLEMENTATION.
- EARTH DISTURBANCES SHALL BE CONDUCTED IN SUCH A MANNER SO AS TO EFFECTIVELY MINIMIZE ACCELERATED SOIL EROSION AND RESULTING SEDIMENTATION. ALL DISTURBANCES SHALL BE DESIGNED, CONSTRUCTED, AND COMPLETED SO THAT THE EXPOSED AREA OF ANY DISTURBED LAND SHALL BE LIMITED TO THE SHORTEST PRACTICAL PERIOD OF TIME. PRE-EXISTING VEGETATION SHALL BE PROTECTED AND MAINTAINED WITHIN 50 HORIZONTAL FEET OF A WATERS OF THE STATE UNLESS SHOWN TO BE INFEASIBLE AND SPECIFICALLY REQUESTED AND APPROVED.
- COMPACTION OF SOIL MUST BE PREVENTED IN AREAS DESIGNATED FOR INFILTRATION CONTROL MEASURES OR WHERE FINAL STABILIZATION WILL BE ACHIEVED BY VEGETATIVE COVER. AREAS DESIGNATED FOR INFILTRATION CONTROL MEASURES SHALL ALSO BE PROTECTED FROM SEDIMENTATION DURING CONSTRUCTION UNTIL FINAL STABILIZATION IS ACHIEVED. IF COMPACTION PREVENTION IS NOT FEASIBLE DUE TO SITE CONSTRAINTS, ALL AREAS DESIGNATED FOR INFILTRATION AND VEGETATION CONTROL MEASURES MUST BE LOOSENEED PRIOR TO INSTALLATION OF THE CONTROL MEASURE(S).
- ANY TEMPORARY OR PERMANENT FACILITY DESIGNED AND CONSTRUCTED FOR THE CONVEYANCE OF STORMWATER AROUND, THROUGH, OR FROM THE EARTH DISTURBANCE AREA SHALL BE A STABILIZED CONVEYANCE DESIGNED TO MINIMIZE EROSION AND THE DISCHARGE OF SEDIMENT OFF SITE.
- CONCRETE WASH WATER SHALL BE CONTAINED AND DISPOSED OF IN ACCORDANCE WITH THE SWMP. NO WASH WATER SHALL BE DISCHARGED TO OR ALLOWED TO ENTER STATE WATERS, INCLUDING ANY SURFACE OR SUBSURFACE STORM DRAINAGE SYSTEM OR FACILITIES. CONCRETE WASHOUTS SHALL NOT BE LOCATED IN AN AREA WHERE SHALLOW GROUNDWATER MAY BE PRESENT, OR WITHIN 50 FEET OF A SURFACE WATER BODY, CREEK, OR STREAM.
- DURING DEWATERING OPERATIONS OF UNCONTAMINATED GROUND WATER MAY BE DISCHARGED ON SITE, BUT SHALL NOT LEAVE THE SITE IN THE FORM OF SURFACE RUNOFF UNLESS AN APPROVED STATE DEWATERING PERMIT IS IN PLACE.
- EROSION CONTROL BLANKETING OR OTHER PROTECTIVE COVERING SHALL BE USED ON SLOPES STEEPER THAN 3:1.
- CONTRACTOR SHALL BE RESPONSIBLE FOR THE REMOVAL OF ALL WASTES FROM THE CONSTRUCTION SITE FOR DISPOSAL IN ACCORDANCE WITH LOCAL AND STATE REGULATORY REQUIREMENTS. NO CONSTRUCTION DEBRIS, TREE SLASH, BUILDING MATERIAL WASTES OR UNUSED BUILDING MATERIALS SHALL BE BURIED, DUMPED, OR DISCHARGED AT THE SITE.
- WASTE MATERIALS SHALL NOT BE TEMPORARILY PLACED OR STORED IN THE STREET, ALLEY, OR OTHER PUBLIC WAY, UNLESS IN ACCORDANCE WITH AN APPROVED TRAFFIC CONTROL PLAN. CONTROL MEASURES MAY BE REQUIRED BY EL PASO COUNTY ENGINEERING IF DETERMINED NECESSARY BASED ON SPECIFIC CONDITIONS AND CIRCUMSTANCES.
- TRACKING OF SOILS AND CONSTRUCTION DEBRIS OFF-SITE SHALL BE MINIMIZED. MATERIALS TRACKED OFF-SITE SHALL BE CLEANED UP AND PROPERLY DISPOSED OF IMMEDIATELY.
- THE OWNER/DEVELOPER SHALL BE RESPONSIBLE FOR THE REMOVAL OF ALL CONSTRUCTION DEBRIS, DIRT, TRASH, ROCK, SEDIMENT, SOIL, AND SAND THAT MAY ACCUMULATE IN ROADS, STORM DRAINS AND OTHER DRAINAGE CONVEYANCE SYSTEMS AND STORMWATER APPURTENANCES AS A RESULT OF SITE DEVELOPMENT.
- THE QUANTITY OF MATERIALS STORED ON THE PROJECT SITE SHALL BE LIMITED, AS MUCH AS PRACTICAL, TO THAT QUANTITY REQUIRED TO PERFORM THE WORK IN AN ORDERLY SEQUENCE. ALL MATERIALS STORED ON-SITE SHALL BE STORED IN A NEAT, ORDERLY MANNER, IN THEIR ORIGINAL CONTAINERS, WITH ORIGINAL MANUFACTURER'S LABELS.
- NO CHEMICAL(S) HAVING THE POTENTIAL TO BE RELEASED IN STORAGE ARE TO BE STORED OR USED ONSITE UNLESS PERMISSION FOR THE USE OF SUCH CHEMICAL(S) IS GRANTED IN WRITING BY THE EGM ADMINISTRATOR. IN GRANTING APPROVAL FOR THE USE OF SUCH CHEMICAL(S), SPECIAL CONDITIONS AND MONITORING MAY BE REQUIRED.
- BULK STORAGE OF ALLOWED PETROLEUM PRODUCTS OR OTHER ALLOWED LIQUID CHEMICALS IN EXCESS OF 55 GALLONS SHALL REQUIRE ADEQUATE SECONDARY CONTAINMENT PROTECTION TO CONTAIN ALL SPILLS ONSITE AND TO PREVENT ANY SPILLED MATERIALS FROM ENTERING STATE WATERS, ANY SURFACE OR SUBSURFACE STORM DRAINAGE SYSTEM OR OTHER FACILITIES.
- NO PERSON SHALL CAUSE THE IMPEDIMENT OF STORMWATER FLOW IN THE CURB AND GUTTER OR DITCH EXCEPT WITH APPROVED SEDIMENT CONTROL MEASURES.
- OWNER/DEVELOPER AND THEIR AGENTS SHALL COMPLY WITH THE "COLORADO WATER QUALITY CONTROL ACT" (TITLE 25, ARTICLE 8, CRS), AND THE "CLEAN WATER ACT" (33 USC 1344), IN ADDITION TO THE REQUIREMENTS OF THE LAND DEVELOPMENT CODE, DCM VOLUME II AND THE EGM APPENDIX I. ALL APPROPRIATE PERMITS MUST BE OBTAINED BY THE CONTRACTOR PRIOR TO CONSTRUCTION (1041, NPDES, FLOODPLAIN, 404, FUGITIVE DUST, ETC.). IN THE EVENT OF CONFLICTS BETWEEN THESE REQUIREMENTS AND OTHER LAWS, RULES, OR REGULATIONS OF OTHER FEDERAL, STATE, LOCAL, OR COUNTY AGENCIES, THE MOST RESTRICTIVE LAWS, RULES, OR REGULATIONS SHALL APPLY.
- ALL CONSTRUCTION TRAFFIC MUST ENTER/EXIT THE SITE ONLY AT APPROVED CONSTRUCTION ACCESS POINTS.
- PRIOR TO CONSTRUCTION THE PERMITTEE SHALL VERIFY THE LOCATION OF EXISTING UTILITIES.
- A WATER SOURCE SHALL BE AVAILABLE ON SITE DURING EARTHWORK OPERATIONS AND SHALL BE UTILIZED AS REQUIRED TO MINIMIZE DUST FROM EARTHWORK EQUIPMENT AND WIND.
- THE SOILS REPORT FOR THIS SITE HAS BEEN PREPARED BY ENTECH ENGINEERING INC. ON MAY 25, 2022 AND SHALL BE CONSIDERED A PART OF THESE PLANS.
- AT LEAST TEN (10) DAYS PRIOR TO THE ANTICIPATED START OF CONSTRUCTION, FOR PROJECTS THAT WILL DISTURB ONE (1) ACRE OR MORE, THE OWNER OR OPERATOR OF CONSTRUCTION ACTIVITY SHALL SUBMIT A PERMIT APPLICATION FOR STORMWATER DISCHARGE TO THE COLORADO DEPARTMENT OF PUBLIC HEALTH AND ENVIRONMENT, WATER QUALITY DIVISION. THE APPLICATION CONTAINS CERTIFICATION OF COMPLETION OF A STORMWATER MANAGEMENT PLAN (SWMP), OF WHICH THIS GRADING AND EROSION CONTROL PLAN MAY BE A PART. FOR INFORMATION OR APPLICATION MATERIALS CONTACT:

COLORADO DEPARTMENT OF PUBLIC HEALTH AND ENVIRONMENT  
WATER QUALITY CONTROL DIVISION  
WOOD - PERMITS  
4300 CHERRY CREEK DRIVE SOUTH  
DENVER, CO 80246-1530  
ATTN: PERMITS UNIT

THE LOCATIONS OF EXISTING ABOVE GROUND AND UNDERGROUND UTILITIES ARE SHOWN IN AN APPROXIMATE WAY ONLY. THE CONTRACTOR SHALL DETERMINE THE EXACT LOCATION OF ALL EXISTING UTILITIES BEFORE COMMENCING WORK. THE CONTRACTOR SHALL BE FULLY RESPONSIBLE FOR ANY AND ALL DAMAGES WHICH MIGHT BE CAUSED BY HIS FAILURE TO EXACTLY LOCATE AND PRESERVE ANY AND ALL ABOVE GROUND AND UNDERGROUND UTILITIES.



Know what's below.  
Call before you dig.



VICINITY MAP  
SCALE: 1" = 500'

#### SHEET INDEX

1	-	COVER
2	-	LEGEND
3	-	GRADING & EROSION CONTROL PLAN
4	-	GEC DETAILS
4	-	TOTAL SHEETS

#### STANDARD NOTES FOR EL PASO COUNTY CONSTRUCTION PLANS:

- ALL DRAINAGE AND ROADWAY CONSTRUCTION SHALL MEET THE STANDARDS AND SPECIFICATIONS OF THE CITY OF COLORADO SPRINGS/EL PASO COUNTY DRAINAGE CRITERIA MANUAL, VOLUMES 1 AND 2, AND THE EL PASO COUNTY ENGINEERING CRITERIA MANUAL.
- CONTRACTOR SHALL BE RESPONSIBLE FOR THE NOTIFICATION AND FIELD NOTIFICATION OF ALL EXISTING UTILITIES, WHETHER SHOWN ON THE PLANS OR NOT, BEFORE BEGINNING CONSTRUCTION. LOCATION OF EXISTING UTILITIES SHALL BE VERIFIED BY THE CONTRACTOR PRIOR TO CONSTRUCTION. CALL 811 TO CONTACT THE UTILITY NOTIFICATION CENTER OF COLORADO (UNCC).
- CONTRACTOR SHALL KEEP A COPY OF THESE APPROVED PLANS, THE GRADING AND EROSION CONTROL PLAN, THE STORMWATER MANAGEMENT PLAN (SWMP), THE SOILS AND GEOTECHNICAL REPORT, AND THE APPROPRIATE DESIGN AND CONSTRUCTION STANDARDS AND SPECIFICATIONS AT THE JOB SITE AT ALL TIMES, INCLUDING THE FOLLOWING:
  - EL PASO COUNTY ENGINEERING CRITERIA MANUAL (ECM)
  - CITY OF COLORADO SPRINGS/EL PASO COUNTY DRAINAGE CRITERIA MANUAL, VOLUMES 1 AND 2
  - COLORADO DEPARTMENT OF TRANSPORTATION (CDOT) STANDARD SPECIFICATIONS FOR ROAD AND BRIDGE CONSTRUCTION
  - CDOT M & S STANDARDS
- NOTWITHSTANDING ANYTHING DEPICTED IN THESE PLANS IN WORDS OR GRAPHIC REPRESENTATION, ALL DESIGN AND CONSTRUCTION RELATED TO ROADS, STORM DRAINAGE AND EROSION CONTROL SHALL CONFORM TO THE STANDARDS AND REQUIREMENTS OF THE MOST RECENT VERSION OF THE RELEVANT ADOPTED EL PASO COUNTY STANDARDS, INCLUDING THE LAND DEVELOPMENT CODE, THE ENGINEERING CRITERIA MANUAL, THE DRAINAGE CRITERIA MANUAL, AND THE DRAINAGE CRITERIA MANUAL VOLUME 2. ANY DEVIATIONS FROM REGULATIONS AND STANDARDS MUST BE REQUESTED, AND APPROVED, IN WRITING. ANY MODIFICATIONS NECESSARY TO MEET CRITERIA AFTER-THE-FACT WILL BE ENTIRELY THE DEVELOPER'S RESPONSIBILITY TO RECTIFY.
- IT IS THE DESIGN ENGINEER'S RESPONSIBILITY TO ACCURATELY SHOW EXISTING CONDITIONS, BOTH ONSITE AND OFFSITE, ON THE CONSTRUCTION PLANS. ANY MODIFICATIONS NECESSARY DUE TO CONFLICTS, OMISSIONS, OR CHANGED CONDITIONS WILL BE ENTIRELY THE DEVELOPER'S RESPONSIBILITY TO RECTIFY.
- CONTRACTOR SHALL SCHEDULE A PRE-CONSTRUCTION MEETING WITH EL PASO COUNTY PLANNING AND COMMUNITY DEVELOPMENT (PCD) - INSPECTIONS, PRIOR TO STARTING CONSTRUCTION.
- IT IS THE CONTRACTOR'S RESPONSIBILITY TO UNDERSTAND THE REQUIREMENTS OF ALL JURISDICTIONAL AGENCIES AND TO OBTAIN ALL REQUIRED PERMITS, INCLUDING BUT NOT LIMITED TO EL PASO COUNTY EROSION AND STORMWATER QUALITY CONTROL PERMIT (ESQCP), REGIONAL BUILDING FLOODPLAIN DEVELOPMENT PERMIT, U.S. ARMY CORPS OF ENGINEERS-ISSUED 401 AND/OR 404 PERMITS, AND COUNTY AND STATE FUGITIVE DUST PERMITS.
- CONTRACTOR SHALL NOT DEViate FROM THE PLANS WITHOUT FIRST OBTAINING WRITTEN APPROVAL FROM THE DESIGN ENGINEER AND PCD. CONTRACTOR SHALL NOTIFY THE DESIGN ENGINEER IMMEDIATELY UPON DISCOVERY OF ANY ERRORS OR INCONSISTENCIES.
- ALL STORM DRAIN PIPE SHALL BE CLASS III RCP UNLESS OTHERWISE NOTED AND APPROVED BY PCD.
- CONTRACTOR SHALL COORDINATE GEOTECHNICAL TESTING PER ECM STANDARDS. PAVEMENT DESIGN SHALL BE APPROVED BY EL PASO COUNTY PCD PRIOR TO PLACEMENT OF CURB AND GUTTER AND PAVEMENT.
- ALL CONSTRUCTION TRAFFIC MUST ENTER/EXIT THE SITE AT APPROVED CONSTRUCTION ACCESS POINTS.
- SIGHT VISIBILITY TRIANGLES AS IDENTIFIED IN THE PLANS SHALL BE PROVIDED AT ALL INTERSECTIONS. OBSTRUCTIONS GREATER THAN 18 INCHES ABOVE FLOWLINE ARE NOT ALLOWED WITHIN SIGHT TRIANGLES.
- SIGNING AND STRIPING SHALL COMPLY WITH EL PASO COUNTY PCD AND MUTCD CRITERIA. [IF APPLICABLE, ADDITIONAL SIGNING AND STRIPING NOTES WILL BE PROVIDED.]
- CONTRACTOR SHALL OBTAIN ANY PERMITS REQUIRED BY EL PASO COUNTY DPW, INCLUDING WORK WITHIN THE RIGHT-OF-WAY AND SPECIAL TRANSPORT PERMITS.
- THE LIMITS OF CONSTRUCTION SHALL REMAIN WITHIN THE PROPERTY LINE UNLESS OTHERWISE NOTED. THE OWNER/DEVELOPER SHALL OBTAIN WRITTEN PERMISSION AND EASEMENTS, WHERE REQUIRED, FROM ADJOINING PROPERTY OWNER(S) PRIOR TO ANY OFF-SITE DISTURBANCE, GRADING, OR CONSTRUCTION.

#### LEGAL DESCRIPTION

THAT PORTION OF THE SOUTHWEST QUARTER OF THE NORTHWEST QUARTER OF SECTION 9, TOWNSHIP 13 SOUTH, RANGE 68 WEST OF THE 6th P.M., DESCRIBED AS FOLLOWS:

BEGINNING AT A POINT ON THE EASTERLY RIGHT OF WAY LINE OF THE U.S. HIGHWAY NO. 24, WHENCE THE SOUTHWEST CORNER OF THE NORTHWEST QUARTER OF SAID SECTION 9 BEARS SOUTH 36 DEGREES 08 MINUTES WEST, 635 FEET; THENCE SOUTH 55 DEGREES 22 MINUTES EAST ON SAID EASTERLY RIGHT OF WAY LINE, 605.3 FEET; THENCE NORTH 27 DEGREES 31 MINUTES EAST, 722 FEET; THENCE NORTH 55 DEGREES 08 MINUTES WEST, 513.8 FEET; THENCE SOUTH 35 DEGREES 18 MINUTES WEST, 723 FEET TO THE POINT OF BEGINNING, EXCEPT ANY PORTION CONTAINED WITHIN U.S. HIGHWAY 24, COUNTY OF EL PASO, STATE OF COLORADO.

SAID TRACT CONTAINS 9.30 ACRES OF LAND, MORE OR LESS.

#### ENGINEER'S STATEMENT

THIS GRADING AND EROSION CONTROL PLAN WAS PREPARED UNDER MY DIRECTION AND SUPERVISION AND IS CORRECT TO THE BEST OF MY KNOWLEDGE AND BELIEF. SAID PLAN HAS BEEN PREPARED ACCORDING TO THE CRITERIA ESTABLISHED BY THE COUNTY FOR GRADING AND EROSION CONTROL PLANS. I ACCEPT RESPONSIBILITY FOR ANY LIABILITY CAUSED BY ANY NEGLIGENT ACTS, ERRORS OR OMISSIONS ON MY PART IN PREPARING THESE PLANS.

NICHOLAS O. JOKERST, P.E.  
COLORADO P.E. 59273  
FOR AND ON BEHALF OF ALL TERRAIN ENGINEERING LLC

#### EL PASO COUNTY STATEMENT

COUNTY PLAN REVIEW IS PROVIDED ONLY FOR GENERAL CONFORMANCE WITH COUNTY DESIGN CRITERIA. THE COUNTY IS NOT RESPONSIBLE FOR THE ACCURACY AND ADEQUACY OF THE DESIGN, DIMENSIONS, AND/OR ELEVATIONS WHICH SHALL BE CONFIRMED AT THE JOB SITE. THE COUNTY THROUGH THE APPROVAL OF THIS DOCUMENT ASSUMES NO RESPONSIBILITY FOR COMPLETENESS AND/OR ACCURACY OF THIS DOCUMENT.

FILED IN ACCORDANCE WITH THE REQUIREMENTS OF THE EL PASO COUNTY LAND DEVELOPMENT CODE, DRAINAGE CRITERIA MANUAL, VOLUMES 1 AND 2, AND ENGINEERING CRITERIA MANUAL AS AMENDED.

IN ACCORDANCE WITH ECM SECTION 1.12, THESE CONSTRUCTION DOCUMENTS WILL BE VALID FOR CONSTRUCTION FOR A PERIOD OF 2 YEARS FROM THE DATE SIGNED BY THE EL PASO COUNTY ENGINEER. IF CONSTRUCTION HAS NOT STARTED WITHIN THOSE 2 YEARS, THE PLANS WILL NEED TO BE RESUBMITTED FOR APPROVAL, INCLUDING PAYMENT OF REVIEW FEES AT THE PLANNING AND COMMUNITY DEVELOPMENT DIRECTORS DISCRETION.

JOSHUA PALMER, P.E.

COUNTY ENGINEER/ECM ADMINISTRATOR



PREPARED FOR:

G&D ENTERPRISES  
10090 WEST HIGHWAY 24  
GREEN MTN FALLS, CO 80819  
ATTN: DANIEL NEWMAN  
(719) 684-9044  
KARAN@ROCKYTOPCO.COM

UNTIL SUCH TIME AS THESE  
DRAWINGS ARE APPROVED BY THE  
APPROPRIATE REVIEWING  
AGENCIES, ALL TERRAIN  
ENGINEERING APPROVES THEIR  
USE ONLY FOR THE PURPOSES  
DESIGNATED BY WRITTEN  
AUTHORIZATION.

JOB NO. 24032	LOCATION: ###	DATE
REV	DESCRIPTION	

ROCKYTOP MOTEL & CAMPGROUND

COVER

DESIGN: NJQ  
REVIEW: REB  
DATE: 01/15/2024

H-SCALE: 1" = 500'

V-SCALE: N/A

SHEET

1 OF 4



PLANOMETRICS

EXISTING

PROPOSED

SECTION LINE

RIGHT-OF-WAY

PARCEL LINE

EASEMENT LINE

BOUNDARY LINE

CENTER LINE

CONSTRUCTION

EXISTING

PROPOSED

C&G

EDGE OF ASPHALT

CONCRETE

SIDE WALK

CROSS PAN

PARKING LOT STRIPING

ROADWAY STRIPING - DHASED

ROADWAY STRIPING - DOTTED

GUARDRAIL

FENCE

SOUNDWALL

DEMO

GRAVEL

RIPRAP

DIRT

TRAIL/PATH

RAIL LINE

GRADING

EXISTING

PROPOSED

CONTOUR INTERMEDIATE

CONTOUR INDEX

TOP OF SLOPE

TOE OF SLOPE

CUT/FILL BOUNDARY

LIMITS OF GRADING

LIMITS OF DISTURBANCE

UTILITIES

EXISTING

PROPOSED

SANITARY SEWER

SANITARY SEWER SERVICE

POTABLE WATER MAIN

POTABLE WATER SERVICE

RAW WATER MAIN

IRRIGATION MAIN

SANITARY FORCE MAIN

UNDER-DRAIN

GAS PIPE

HIGH PRESSURE GAS

OIL/PETROLEUM LINE

UNDER-GROUND

OVER-HEAD ELECTRIC

FIBER OPTIC

COMMUNICATION LINES MISC.

STORM PIPE

HGL MINOR

HGL MAJOR

DRAINAGE

EXISTING

PROPOSED

BASE FLOOD ELEVATION

100-YR FLOOD PLAIN

500-YR FLOOD PLAIN

FLOODWAY

SWALE/DITCH

THALWEG (STREAM/CREEK)

LIMITS OF WETLANDS

EDGE OF WATER

SILT FENCE

CONSTRUCTION FENCE/MARKERS

UTILITY SYMBOLS

EXISTING

PROPOSED

STORM SEWER

MANHOLE

STORM INLET

AREA INLET - SQUARE

AREA INLET - ROUND

FLARED END SECTION

TRAFFIC

EXISTING

PROPOSED

TRAFFIC SIGNAL BOX

TRAFFIC SIGNAL POLE

SIGN

STREET LIGHT

STREET LIGHT - SINGLE

STREET LIGHT - DOUBLE

LUMINAIRE

LANDSCAPE

EXISTING

PROPOSED

TREE - CONIFEROUS

TREE - DECIDUOUS

SHRUB/BUSH

SHRUBS AND BUSHES

IRRIGATION BOX

IRRIGATION SPRINKLER

IRRIGATION VALVE

BOLLARD

FLAGPOLE

UTILITY SYMBOLS

EXISTING

PROPOSED

LINE MARKER

SERVICE MARKER

CLEAN-OUT

MANHOLE

SANITARY

EXISTING

PROPOSED

LINE MARKER

SERVICE MARKER

FIRE HYDRANT

FIRE CONNECTION

MANHOLE

BEND

BLOW-OFF VALVE

WELL

METER

VALVE

REDUCER

THRUST BLOCK

CROSS

PLUG W/ THRUST BLOCK

TEE

REVERSE ANCHOR

ANODE

AIR & VACUUM VALVE ASSEMBLY

GAS

EXISTING

PROPOSED

MARKER

SERVICE MARKER

METER

DRY UTILITIES

EXISTING

PROPOSED

CABLE TV MARKER

CABLE TELEVISION PEDESTAL

ELECTRIC MARKER

ELECTRIC SERVICE MARKER

ELECTRICAL PEDESTAL

ELECTRICAL METER

ELECTRICAL MANHOLE

FIBER-OPTIC MARKER

IRRIGATION PEDESTAL

TELEPHONE MARKER

TELEPHONE PEDESTAL

TELEPHONE MANHOLE

UTILITY POLE

GUY ANCHOR

GUY POLE

MISC. UTILITIES

EXISTING

PROPOSED

VENT PIPE

TEST HOLE DESIGNATOR

ABBREVIATIONS:

ASCE - AMERICAN SOCIETY OF CIVIL ENGINEERS

BLDG - BUILDING

BW - BOTTOM OF WALL

CG - CURB AND GUTTER

CIP - CAST IRON PIPE

CL - CENTERLINE

CMP - CORRUGATED METAL PIPE

CONC - CONCRETE

DIP - DUCTILE IRON PIPE

DS - DOWNSPOUT

EL - ELEVATION

ESMT - EASEMENT

EX - EXISTING

FES - FLARED END SECTION

FL - FLOWLINE

GB - GRADE BREAK

HP - HIGH POINT

HYD - HYDRANT

INV - INVERT ELEVATION

LF - LINEAR FEET

LP - LOW POINT

MH - MANHOLE

MIN - MINIMUM

OH - OVERHEAD

PB - PUBLIC

PC - POINT OF CURVATURE

PCC - POINT OF COMPOUND CURVATURE

PCR - POINT OF CURB RETURN

PR - PROPOSED

PRC - POINT OF REVERSE CURVATURE

PVC - POLYVINYL CHLORIDE PIPE

PVT - PRIVATE

PT - POINT OF TANGENCY

P.U.E - PUBLIC UTILITY EASEMENT

P.U.A.E - PUBLIC UTILITY & ACCESS EASEMENT

P.U.D.E - PUBLIC UTILITY & DRAINAGE EASEMENT

P.I.E - PUBLIC IMPROVEMENT EASEMENT

R - RADIUS

RIM - RIM ELEVATION

STM - STORM

TBC - TOP BACK OF CURB

TW - TOP OF WALL

TYP - TYPICAL

UD - UNDERDRAIN

UT - UTILITY

WTR - WATER

XPAN - CROSSPAN

ALL KARAN ENGINEERING

PREPARED FOR:

G&D ENTERPRISES

10090 WEST HIGHWAY 24

GREEN MTN FALLS, CO 80819

ATTN: DANIEL NEWMAN

(719) 684-9044

KARAN@ROCKYTOP.CO.COM

UNTIL SUCH TIME AS THESE

DRAWINGS ARE APPROVED BY THE

APPROPRIATE REVIEWING

AGENCIES, ALL TERRAIN

ENGINEERING APPROVES THEIR

USE ONLY FOR THE PURPOSES

DESIGNATED BY WRITTEN

AUTHORIZATION.

JOB NO: 24032

LOCATION: EPC

REV

DESCRIPTION

DATE

ROCKYTOP MOTEL & CAMPGROUND

LEGEND

DESIGN: NQJ

REVIEW: REB

DATE: 01/15/2024

N/a

W-SCALE: N/A

SHEET

2 OF 4

WILLIAM G. ROBERT, PE

550.391.7600 - INFO@KARANTERRAIN.COM

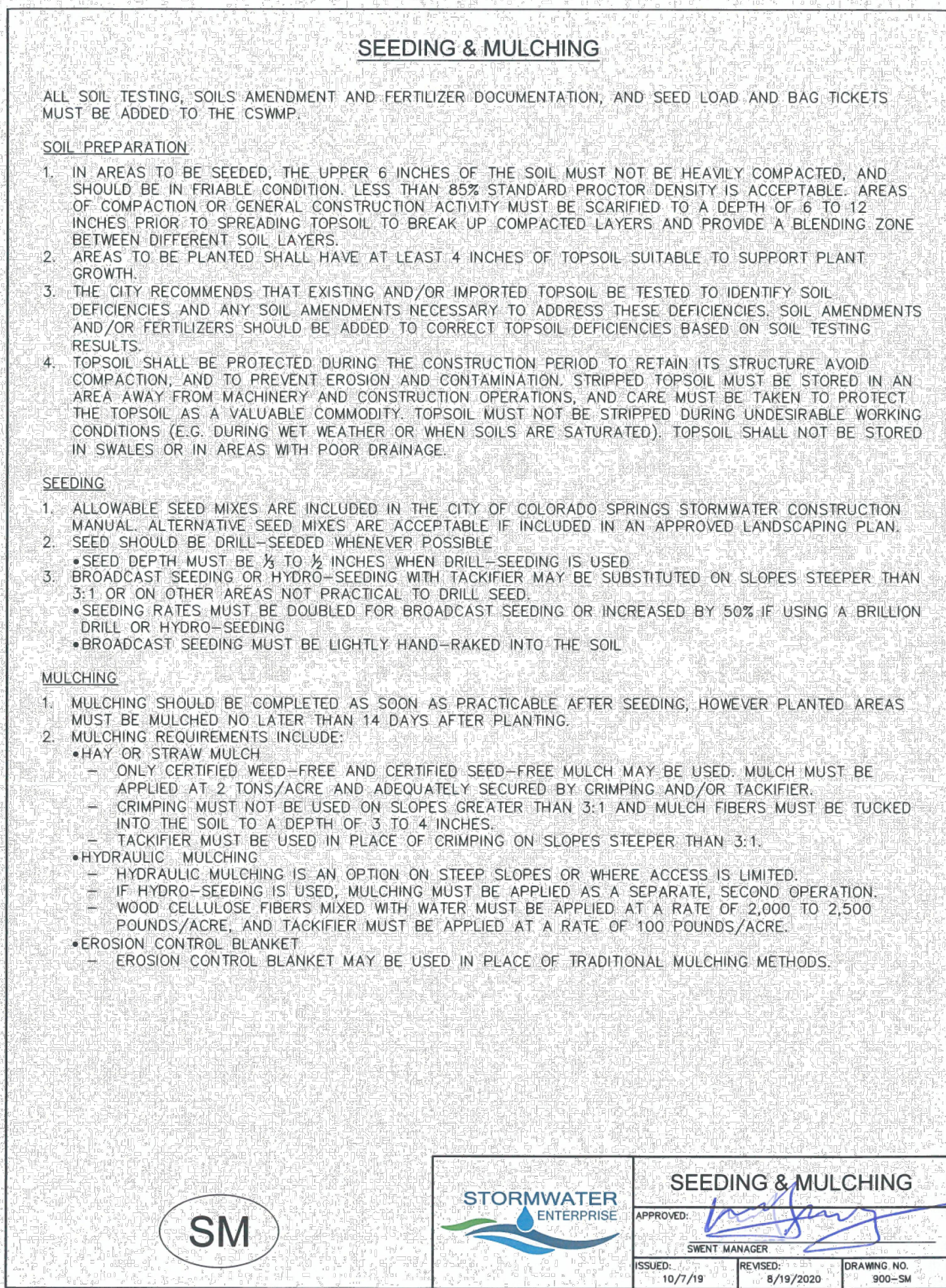
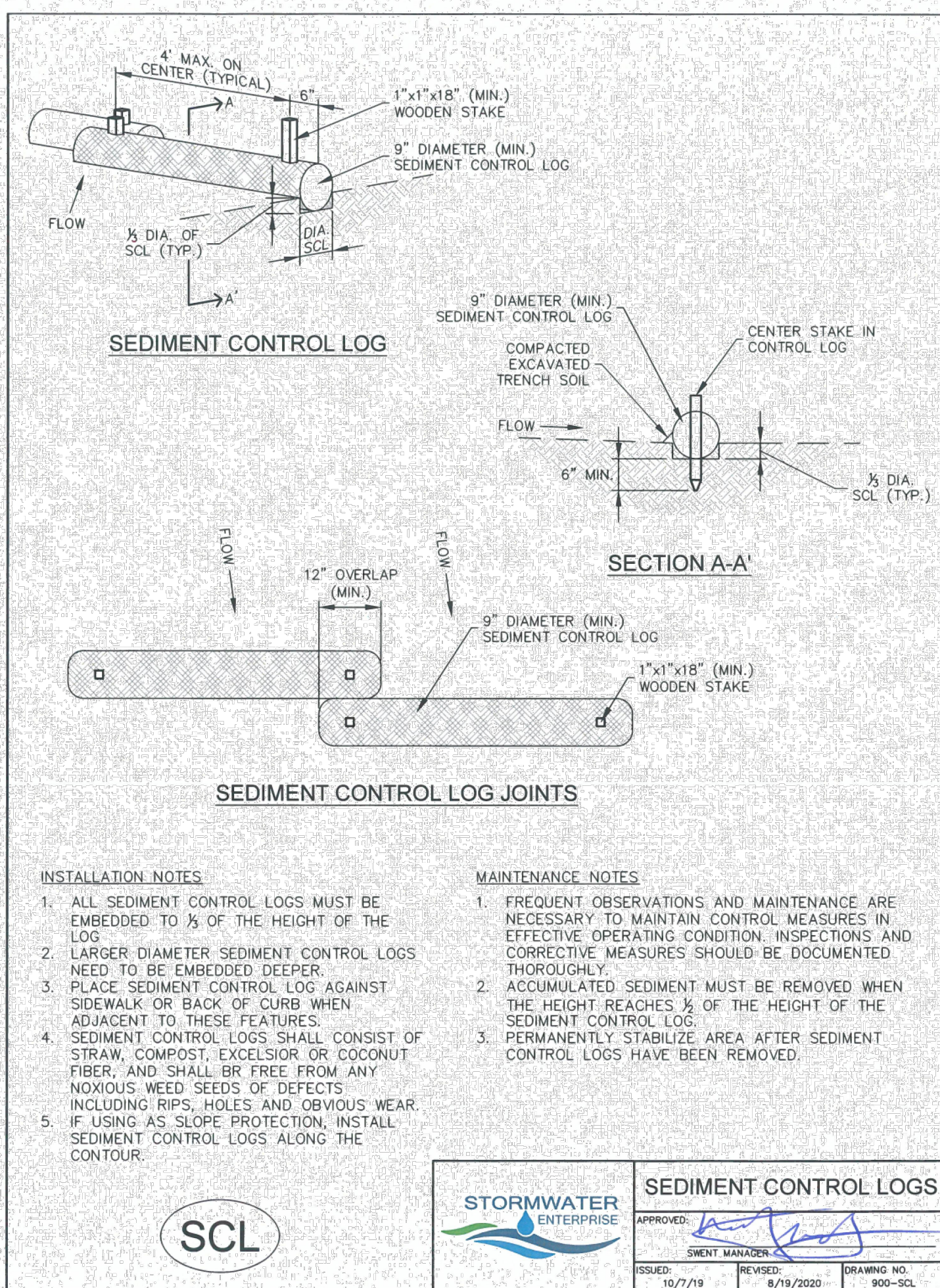
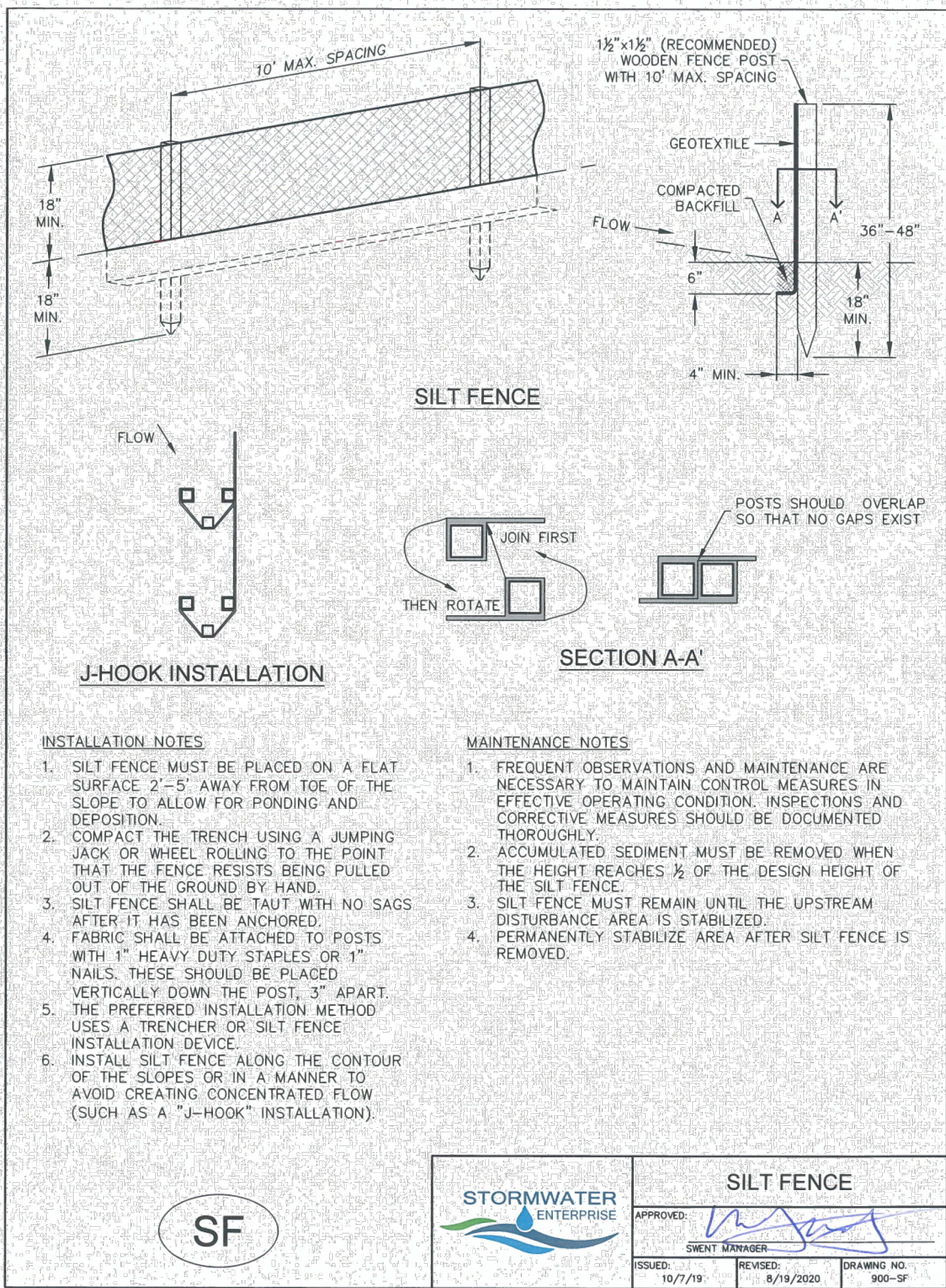
APM E. BARKER, PE

703.577.8888 - KARAN@KARANTERRAIN.COM









REV	DESCRIPTION	DATE

ROCKYTOP MOTEL & CAMPGROUND

GEC DETAILS

DESIGN: NQJ  
REVIEW: REB  
DATE: 01/15/2024

H-SCALE: N/A

V-SCALE: N/A

SHEET

4 OF 4

PREPARED FOR:  
G&D ENTERPRISES  
10090 WEST HIGHWAY 24  
GREEN MTN FALLS, CO 80819  
ATTN: DANIEL NEWMAN  
(719) 684-9044  
KARAN@ROCKYTOPCO.COM

UNTIL SUCH TIME AS THESE  
DRAWINGS ARE APPROVED BY THE  
APPROPRIATE REVIEWING  
AGENCIES, ALL TERRAIN  
ENGINEERING APPROVES THEIR  
USE ONLY FOR THE PURPOSES  
DESIGNATED BY WRITTEN  
AUTHORIZATION.

JOB NO: 24032 LOCATION: EPC

DESIGN: NQJ  
REVIEW: REB  
DATE: 01/15/2024

H-SCALE: N/A

V-SCALE: N/A

SHEET

4 OF 4



NICHOLAS G. ROBERT, PE  
562.991.7662 - NICHOLAS@ALLTERRAIN.COM

ARMY E. BARKER, PE  
719.577.8888 - ARMY@ALLTERRAIN.COM