

EROSION CONTROL LEGEND:

- SILT FENCE (SF) INTERIM
- VEHICLE TRACKING CONTROL (VTC) INTERIM
- STOCK PILE PROTECTION (SP) INTERIM
- STABILIZED STAGING AREA (SSA) INTERIM
- DIRECTION OF RUNOFF

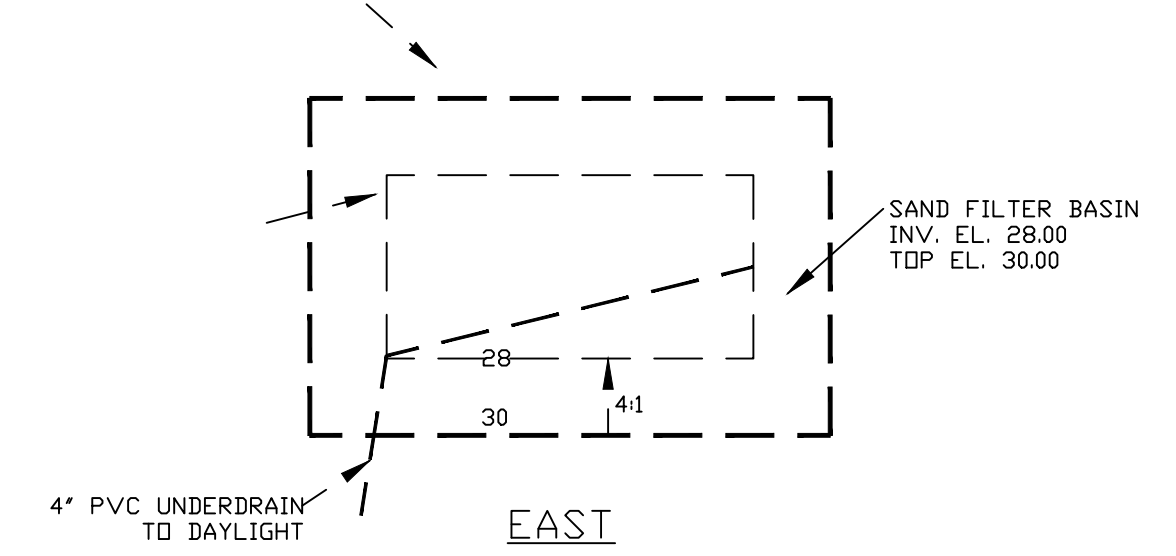
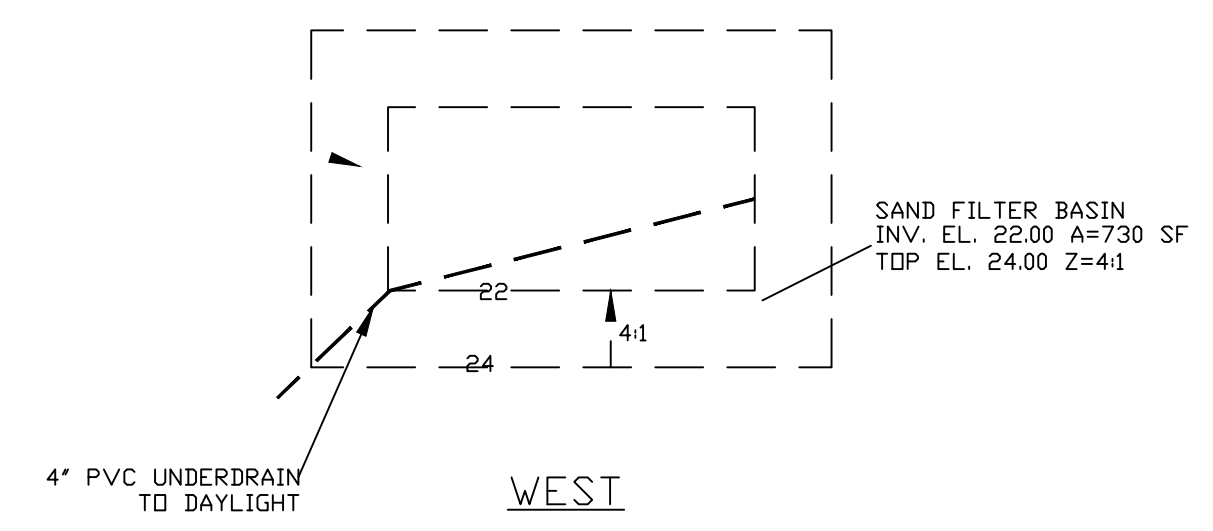
- CONTOUR LEGEND:**
- ORIGINAL CONTOURS: 1', 5'
 - FINISH CONTOURS: 1', 5'
 - LIMIT OF DISTURBANCE: 0.696 ACRES

Engineer's Statement (for standalone GEC Plan):
 This Grading and Erosion Control Plan was prepared under my direction and supervision and is correct to the best of my knowledge and belief. Said Plan has been prepared according to the criteria established by the County for Grading and Erosion Control Plans. I accept responsibility for any liability caused by any negligent acts, errors or omissions on my part in preparing this plan.

Engineer of Record Signature: Oliver E. Watts, COLE PELS#9853
 Oliver E. Watts Consulting Engineer, Inc.
 614 Elkton Drive Colorado Springs, CO 80907
 719-593-0173
 olliewatts@aol.com

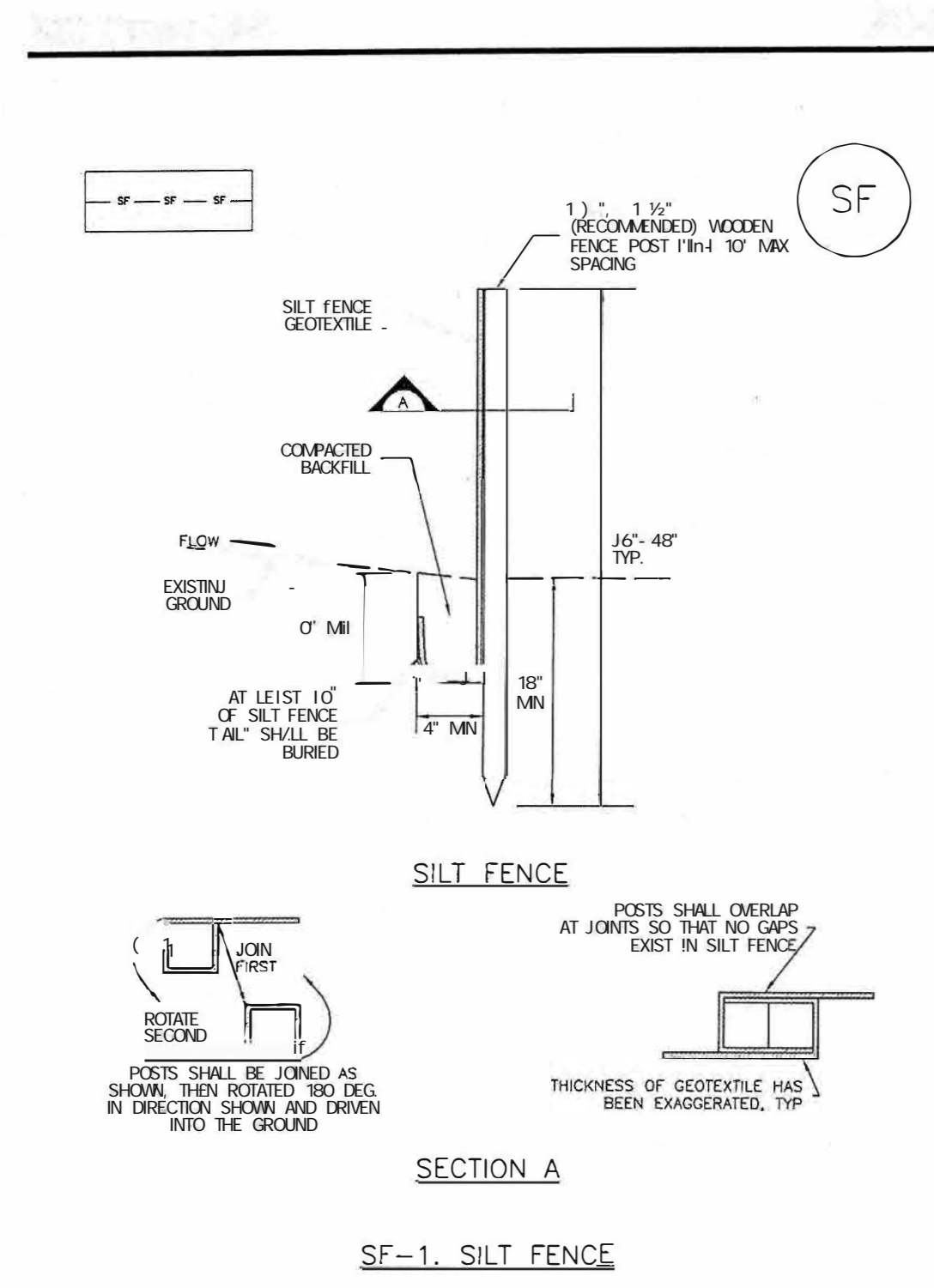
Owner's Statement (for standalone GEC Plan):
 I, the owner/developer have read and will comply with the requirements of the Grading and Erosion Control Plan.

Owner Signature _____ Date _____

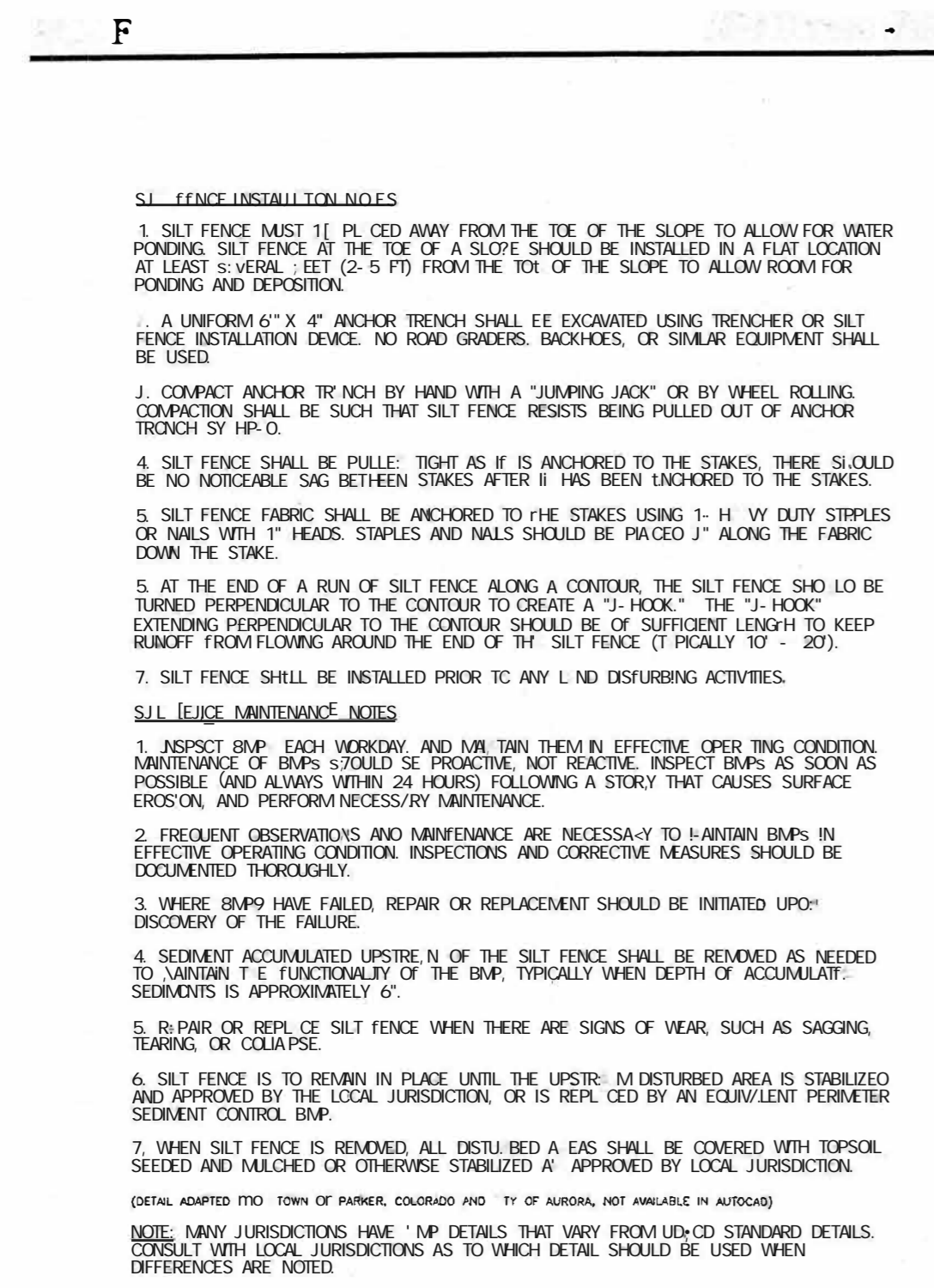


Prepared by the office of:
 Oliver E. Watts, Consulting Engineer, Inc.
 614 Elkton Drive
 Colorado Springs, CO 80907
 (719) 593-0173
 olliewatts@aol.com
 Celebrating 42 years in Business

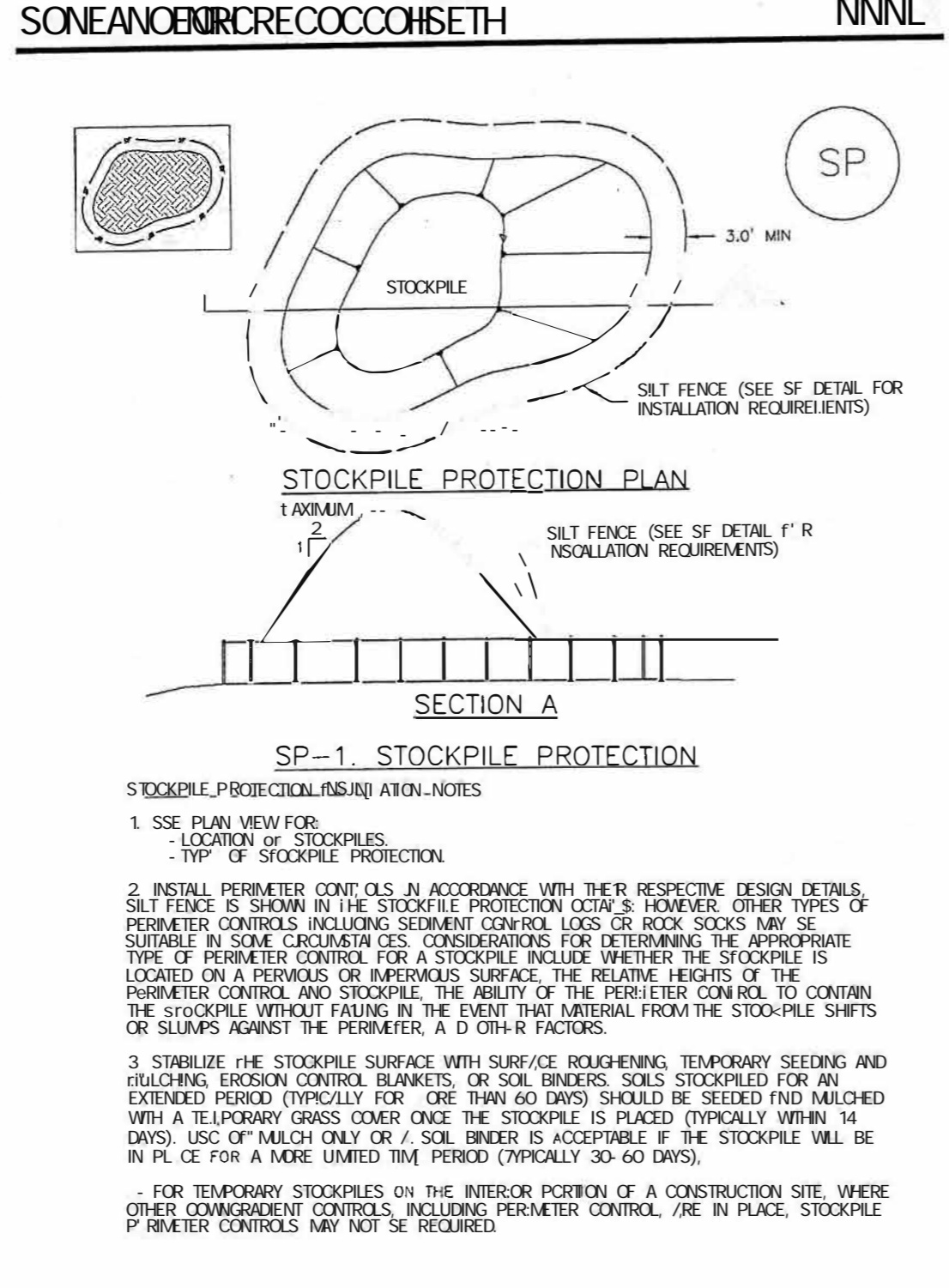
DRAWN BY: D.E. WATTS DATE: 19-5341-03 DWG. NO.: 19-5341-03 TOPOGRAPHY BY: CITY FMS 6-12-19 SURVEY INFORMATION BY: RAMPART JOB NO. 18384	APPROVED BY: _____ PROJ. NO.: _____ DWG.: _____	REVISIONS 8-16-21 UPDATED DEW 12-30-21 REVISED PER COUNTY REVIEW COMMENTS DEW	OLIVER E. WATTS CONSULTING ENGINEER COLORADO SPRINGS	PROJECT: ROCKY TOP MOTEL & CAMPGROUND PART NW1/4 SECTION 9, T.13S., R.68W., 6TH P.M. EL PASO COUNTY	SHEET NO.: GRADING AND EROSION CONTROL PLAN 1 OF 3
---	---	--	--	---	---



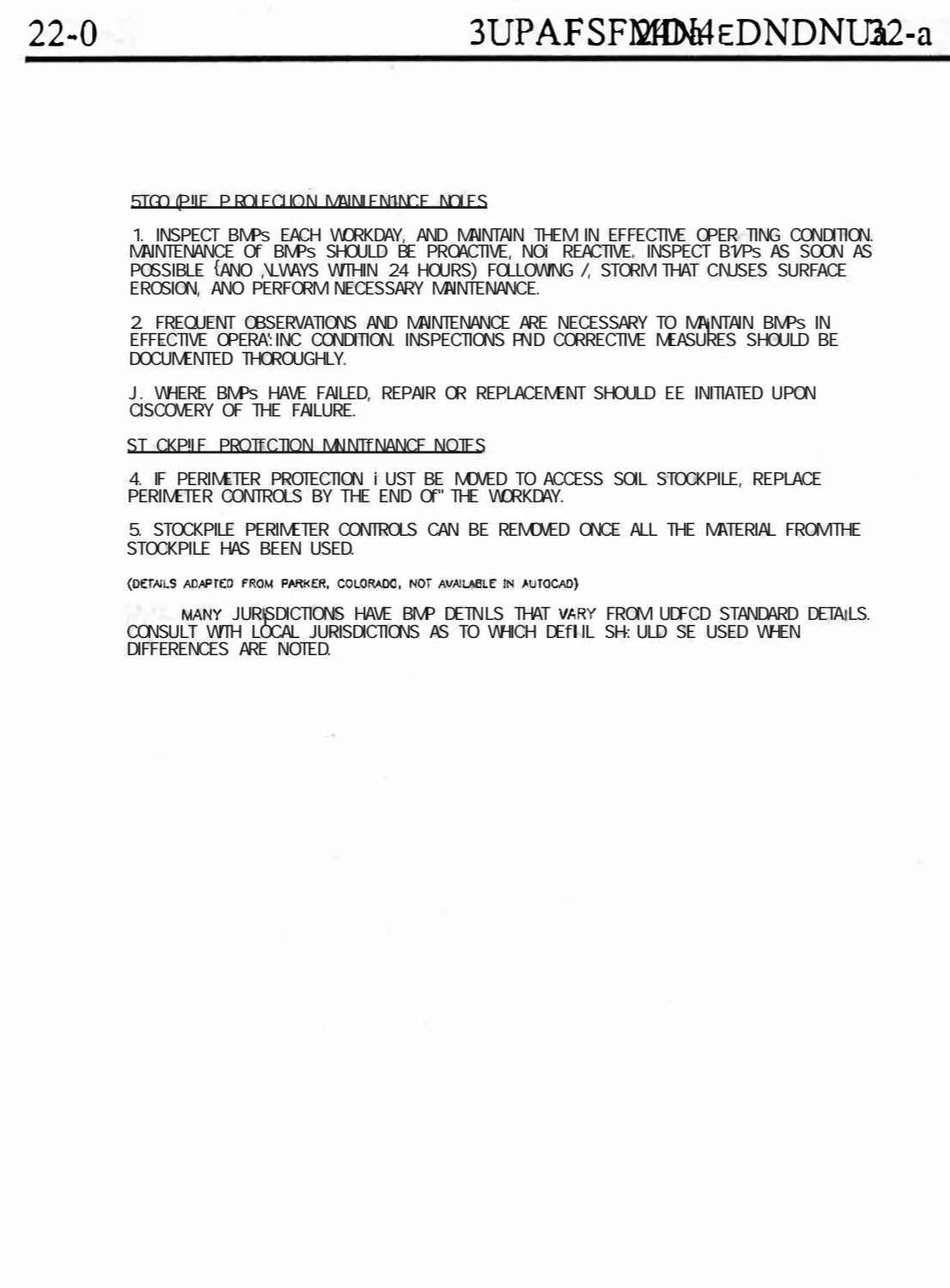
SF-1. SILT FENCE
November 2010 Urban Drainage and Flood Control District Urban Storm Drainage Criteria Manual Volume 3 SF-3



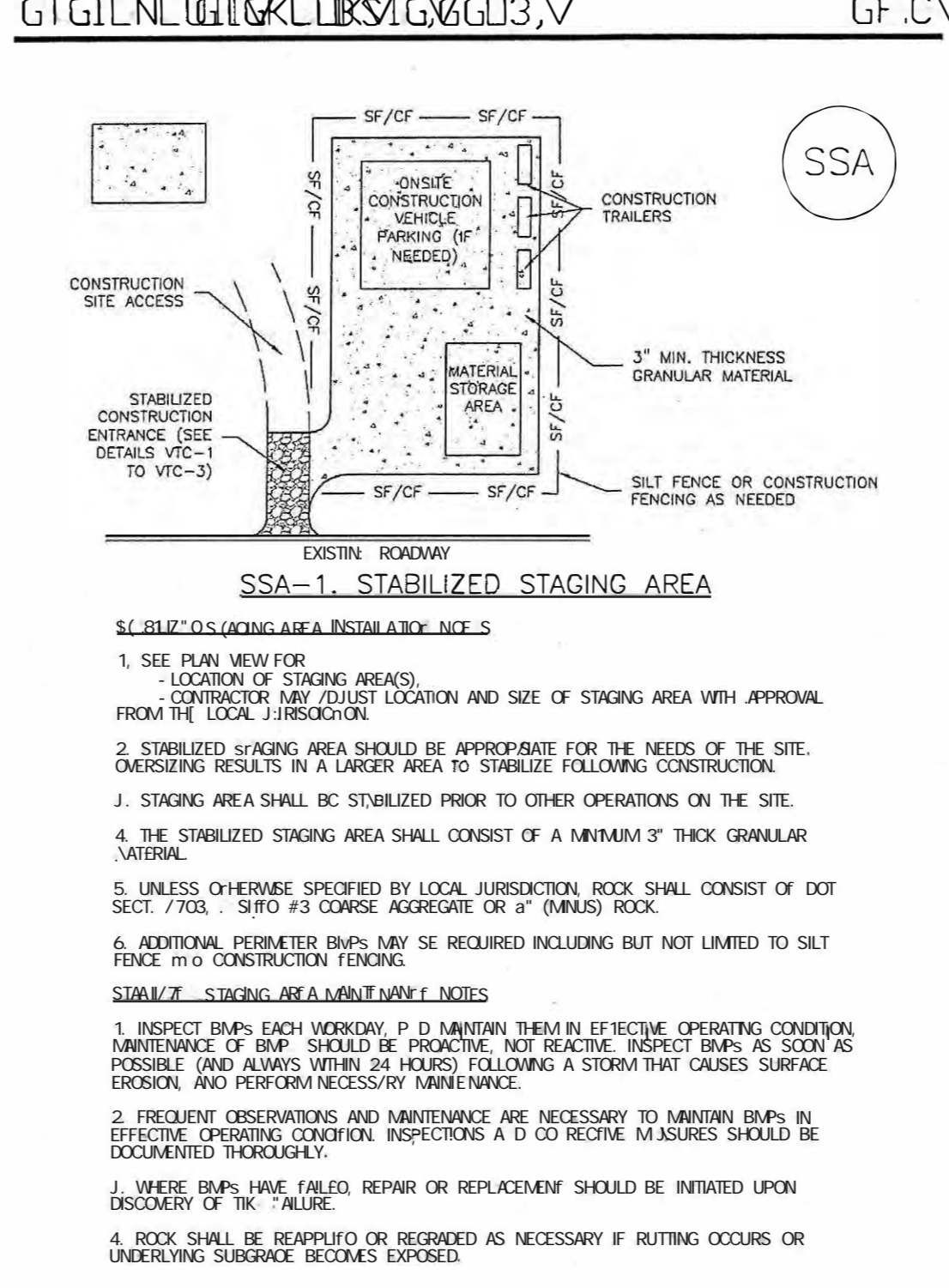
SF-4 Urban Drainage and Flood Control District Urban Storm Drainage Criteria Manual Volume 3 November 2010



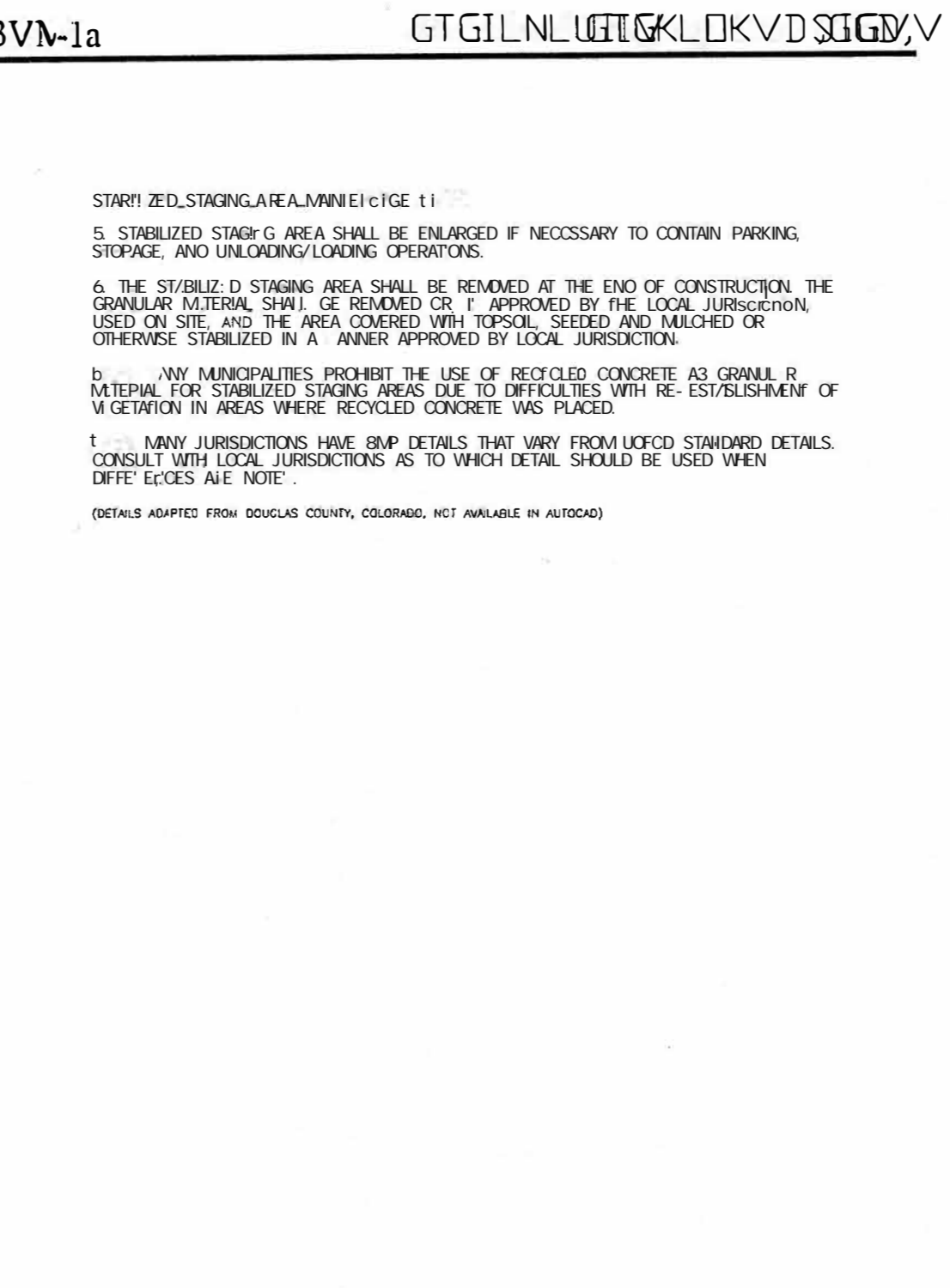
SP-3 Urban Drainage and Flood Control District Urban Storm Drainage Criteria Manual Volume 3 November 2010



SP-4 Urban Drainage and Flood Control District Urban Storm Drainage Criteria Manual Volume 3 November 2010



SSA-3 Urban Drainage and Flood Control District Urban Storm Drainage Criteria Manual Volume 3 November 2010



SSA-4 Urban Drainage and Flood Control District Urban Storm Drainage Criteria Manual Volume 3 November 2010

SEEDING & MULCHING

ALL SOIL TESTING, SOILS AMENDMENT AND FERTILIZER DOCUMENTATION, AND SEED LOAD AND BAG TICKETS MUST BE ADDED TO THE DRAWING.

SOIL PREPARATION

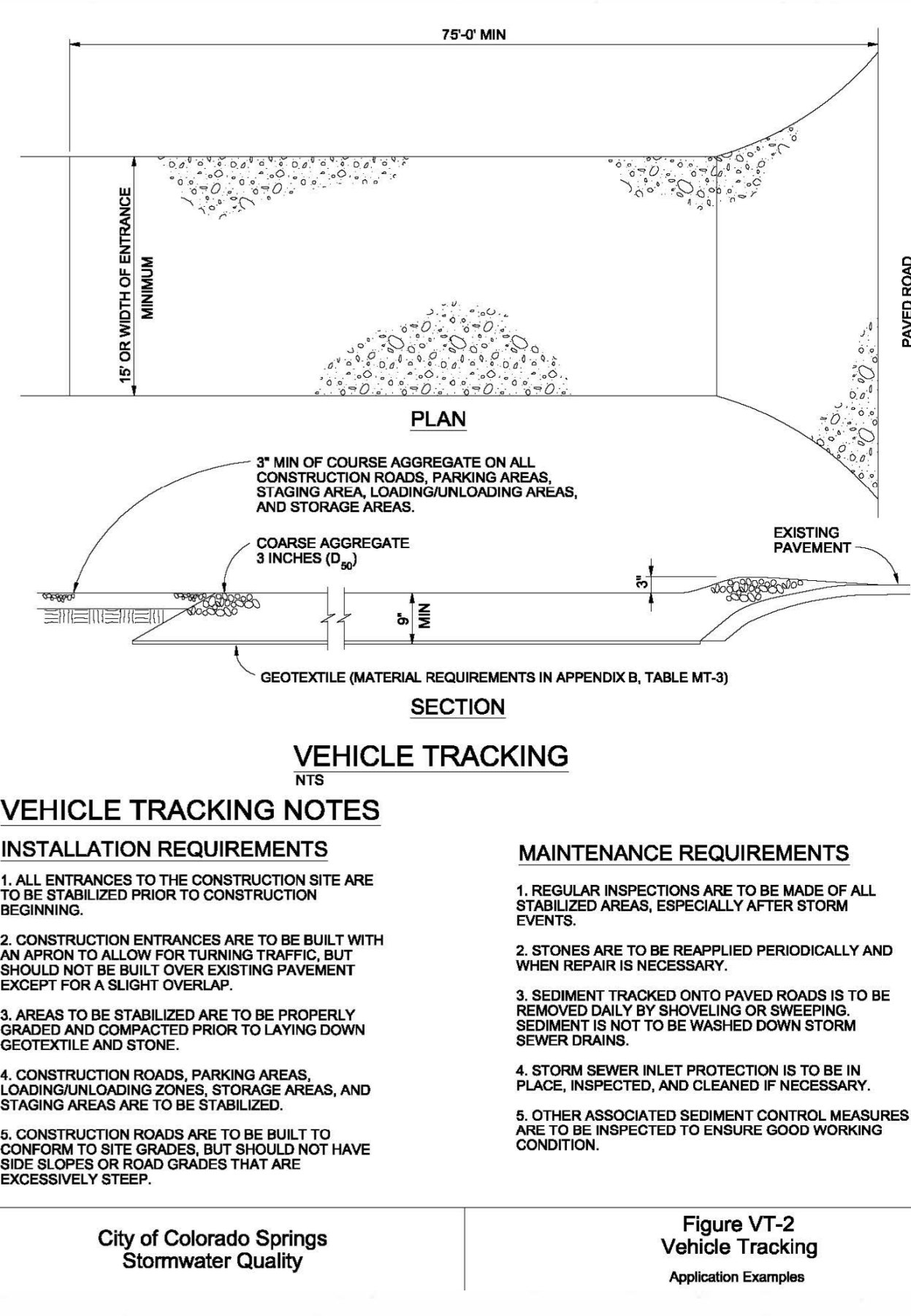
- IN AREAS TO BE SEEDDED, THE UPPER 6 INCHES OF THE SOIL MUST NOT BE HEAVILY COMPACTED, AND SHOULD BE IN FRABLE CONDITION. LESS THAN 85% STANDARD PROCTOR DENSITY IS ACCEPTABLE. AREAS OF CONACTION OR GENERAL CONSTRUCTION ACTIVITY MUST BE SCARIFIED TO A DEPTH OF 6 TO 12 INCHES PRIOR TO SPREADING TOPSOIL TO BREAK UP COMPACTED LAYERS AND PROVIDE A BLENDING ZONE BETWEEN DIFFERENT SOIL LAYERS.
- AREAS TO BE PLANTED SHALL HAVE AT LEAST 4 INCHES OF TOPSOIL SUITABLE TO SUPPORT PLANT GROWTH.
- THE CITY RECOMMENDS THAT EXISTING AND/OR IMPORTED TOPSOIL BE TESTED TO IDENTIFY SOIL DEFICIENCIES AND ANY SOIL AMENDMENTS NECESSARY TO ADDRESS THESE DEFICIENCIES. SOIL AMENDMENTS AND/OR FERTILIZERS SHOULD BE ADDED TO CORRECT DEFICIENCIES BASED ON SOIL TESTING RESULTS.
- TOPSOIL SHALL BE PROTECTED DURING THE CONSTRUCTION PERIOD TO RETAIN ITS STRUCTURE, AVOID COMPACTION, AND TO PREVENT EROSION AND CONTAMINATION. STRIPPED TOPSOIL MUST BE STORED IN AN AREA AWAY FROM MACHINERY AND CONSTRUCTION OPERATIONS, AND CARE MUST BE TAKEN TO PROTECT THE TOPSOIL AS A VALUABLE COMMODITY. TOPSOIL MUST NOT BE STRIPPED DURING UNDESIRABLE WORKING CONDITIONS (E.G. DURING WET WEATHER OR WHEN SOILS ARE SATURATED). TOPSOIL SHALL NOT BE STORED IN SWALES OR IN AREAS WITH POOR DRAINAGE.

SEEDING

- ALLOWABLE SEED MIXES ARE INCLUDED IN THE CITY OF COLORADO SPRINGS STORMWATER CONSTRUCTION MANUAL. ALTERNATIVE SEED MIXES ARE ACCEPTABLE IF INCLUDED IN AN APPROVED LANDSCAPING PLAN.
- SEED SHOULD BE DRILL-SEEDED WHENEVER POSSIBLE.
- BROADCAST SEEDING OR HYDRO-SEEDING WITH TACKIFIER MAY BE SUBSTITUTED ON SLOPES STEEPER THAN 3:1 OR ON OTHER AREAS NOT PRACTICAL TO DRILL SEED.
 - SEEDING RATES MUST BE DOUBLED FOR BROADCAST SEEDING OR INCREASED BY 50% IF USING A BRILLIANT DRILL OR HYDRO-SEEDING.
 - BROADCAST SEEDING MUST BE LIGHTLY HAND-RAKED INTO THE SOIL.

MULCHING

- MULCHING SHOULD BE COMPLETED AS SOON AS PRACTICABLE AFTER SEEDING, HOWEVER PLANTED AREAS MUST BE MULCHED NO LATER THAN 14 DAYS AFTER PLANTING.
- MULCHING REQUIREMENTS INCLUDE:
 - HAY OR STRAW MULCH
 - ONLY CERTIFIED WEED-FREE AND CERTIFIED SEED-FREE MULCH MAY BE USED. MULCH MUST BE APPLIED AT 2 TONS/ACRE AND ADEQUATELY SECURED BY CRIMPING AND/OR TACKIFIER.
 - CRIMPING MUST NOT BE USED ON SLOPES GREATER THAN 3:1 AND MULCH FIBERS MUST BE TUCKED INTO THE SOIL TO A DEPTH OF 3 TO 4 INCHES.
 - TACKIFIER MUST BE USED IN PLACE OF CRIMPING ON SLOPES STEEPER THAN 3:1.
 - HYDRAULIC MULCHING
 - HYDRAULIC MULCHING IS AN OPTION ON STEEP SLOPES OR WHERE ACCESS IS LIMITED.
 - IF HYDRO-SEEDING IS USED, MULCHING MUST BE APPLIED AS A SEPARATE SECOND OPERATION.
 - WOOD CELLULOSE FIBERS MIXED WITH WATER MUST BE APPLIED AT A RATE OF 2,000 TO 2,500 POUNDS/ACRE, AND TACKIFIER MUST BE APPLIED AT A RATE OF 100 POUNDS/ACRE.
- EROSION CONTROL BLANKET
 - EROSION CONTROL BLANKET MAY BE USED IN PLACE OF TRADITIONAL MULCHING METHODS.



City of Colorado Springs Stormwater Quality Figure VT-2 Vehicle Tracking Application Examples

Prepared by the Office of:
Oliver E. Watts, Consulting Engineer, Inc.
614 Elkton Drive, Colorado Springs, CO 80907
719-593-0173
oliewatts@aol.com
Celebrating over 39 years in business

DRAWN BY: O.E. WATTS DATE: 12-14-18 DWG. NO.: 19-5348	APPROVED BY: PROJ. NO. DWG.	REVISIONS	OLIVER E. WATTS CONSULTING ENGINEER COLORADO SPRINGS	PROJECT	SHT. NAME EROSION CONTROL DETAILS	SHT. NO. OF
---	-----------------------------------	-----------	--	---------	---	----------------