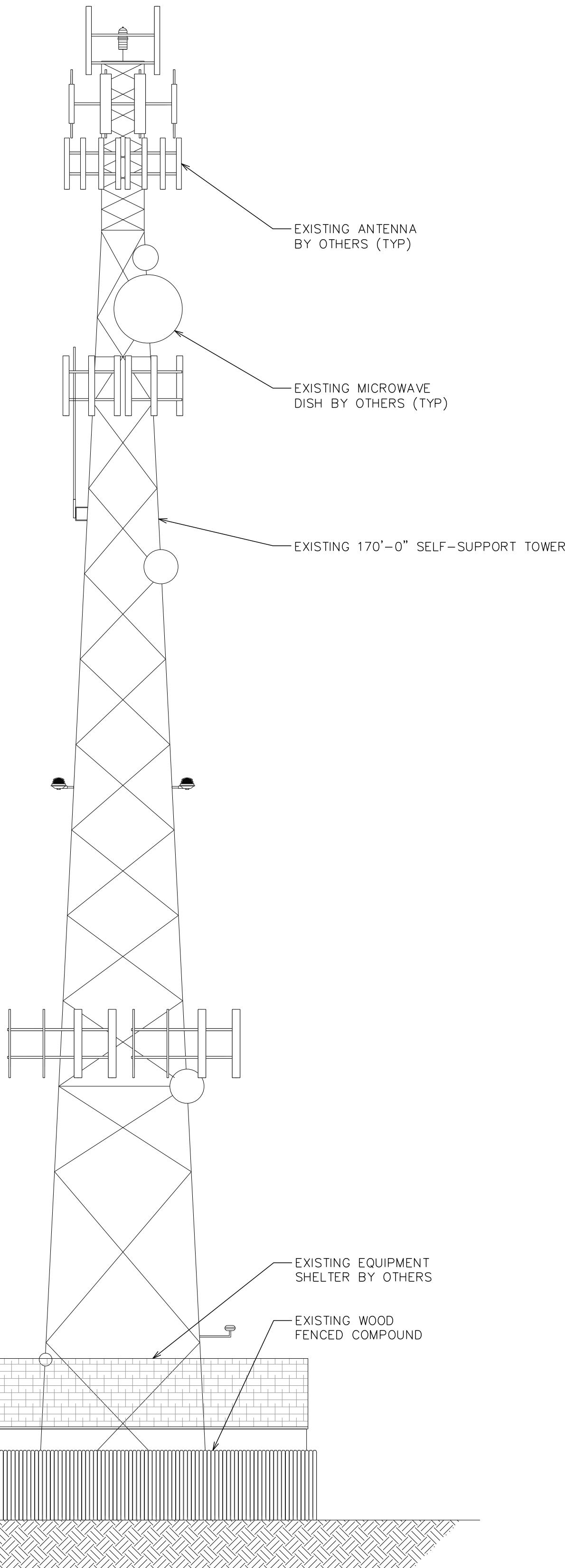


NOTE:

TOWER ELEVATION IS FOR SCHEMATIC PURPOSES ONLY. TEP DID NOT CONFIRM EXISTING SITE CONDITIONS INCLUDING, BUT NOT LIMITED TO ANTENNA HEIGHTS, ANTENNA AZIMUTHS, AND MOUNT CONFIGURATIONS.

174'-0"±  
T/APPERTENANCE  
170'-0"±  
T/TOWER

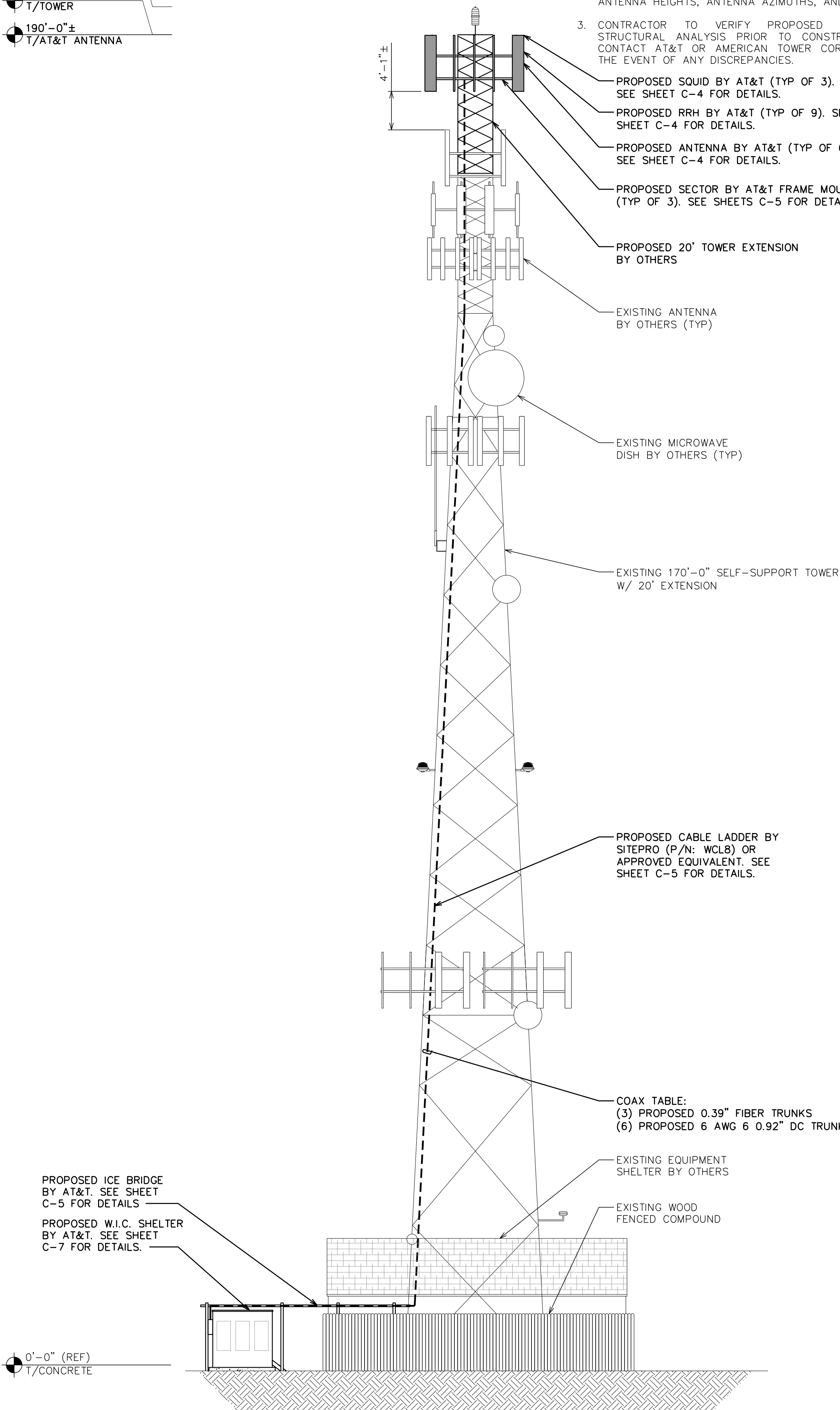


EXISTING TOWER ELEVATION

SCALE: 3/32" = 1'-0" (24x36)  
SCALE: 3/64" = 1'-0" (11x17)



194'-0"±  
T/APPERTENANCE  
190'-0"±  
T/TOWER  
190'-0"±  
T/AT&T ANTENNA



FINAL TOWER ELEVATION

SCALE: 3/32" = 1'-0" (24x36)  
SCALE: 3/64" = 1'-0" (11x17)



NOTES:

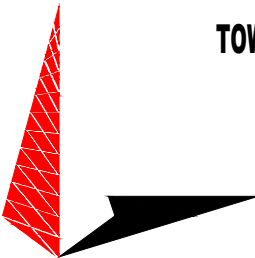
1. PROPOSED CABLES TO BE ROUTED PER SPECIFICATIONS OF PASSING STRUCTURAL ANALYSIS.
2. TOWER ELEVATION IS FOR SCHEMATIC PURPOSES ONLY. TEP DID NOT CONFIRM EXISTING SITE CONDITIONS INCLUDING, BUT NOT LIMITED TO ANTENNA HEIGHTS, ANTENNA AZIMUTHS, AND MOUNT CONFIGURATIONS.
3. CONTRACTOR TO VERIFY PROPOSED LOADING WITH PASSING STRUCTURAL ANALYSIS PRIOR TO CONSTRUCTION. CONTRACTOR TO CONTACT AT&T OR AMERICAN TOWER CORPORATION IMMEDIATELY IN THE EVENT OF ANY DISCREPANCIES.



161 INVERNESS DR W, 2ND FLOOR  
ENGLEWOOD, CO 80112



AMERICAN TOWER®  
19100 VON KARMAN AVE  
SUITE 200  
IRVINE, CA 92612



TOWER ENGINEERING PROFESSIONALS  
4710 E ELWOOD ST, STE 9  
PHOENIX, AZ 85040  
OFFICE: (480) 285-0036  
www.tepgroup.net

AT&T SITE ID: COL02237  
AT&T FA CODE: 15312482  
AT&T PACE #: MRUTH042457  
ATC #: 302460  
BLACK FOREST

4590 HODGEN RD  
COLORADO SPRINGS, CO 80908  
(EL PASO COUNTY)

EXISTING 170'-0" W/ 20'  
EXTENSION  
SELF-SUPPORT TOWER  
NSB - LTE - 1C/2C/3C/4C/5G NR  
1SR

ISSUED FOR:

REV	DATE	DRWN	DESCRIPTION	QA
A	11-23-20	RRG	PRELIMINARY	EGG
B	12-10-20	CBM	90% CONSTRUCTION	EGG
C	02-17-21	BCL	90% CONSTRUCTION	EGG

SEAL:



IT IS A VIOLATION OF LAW FOR ANY PERSON,  
UNLESS THEY ARE ACTING UNDER THE DIRECTION  
OF A LICENSED PROFESSIONAL ENGINEER,  
TO ALTER THIS DOCUMENT.

SHEET TITLE:  
EXISTING AND  
FINAL ELEVATIONS

SHEET NUMBER: REVISION:

C-3

C

TEP #: 85172.243629