

EQUIPMENT LEGEND:

- EXISTING TO REMAIN
- TO BE RELOCATED/REMOVED

T-MOBILE EQUIPMENT

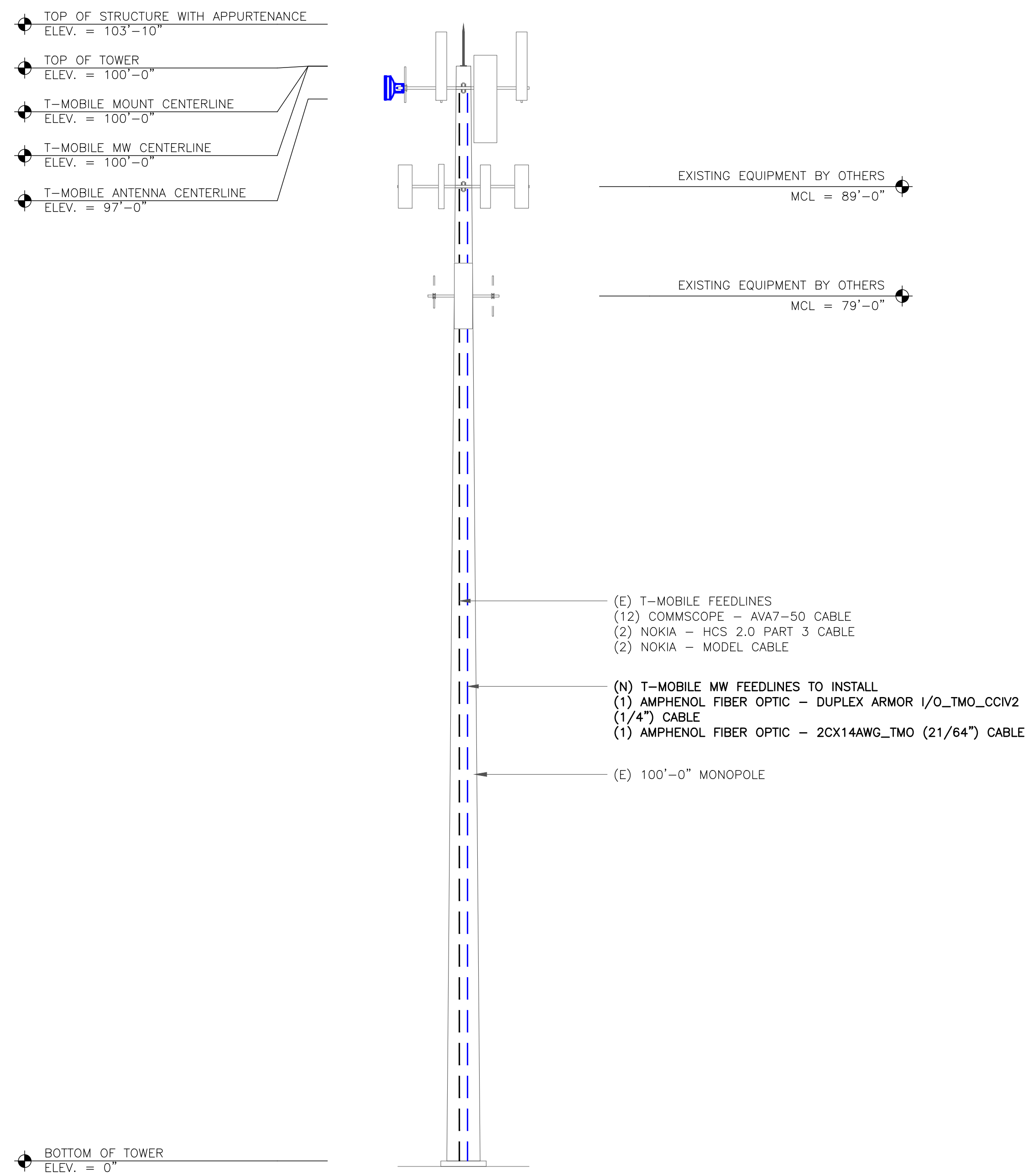
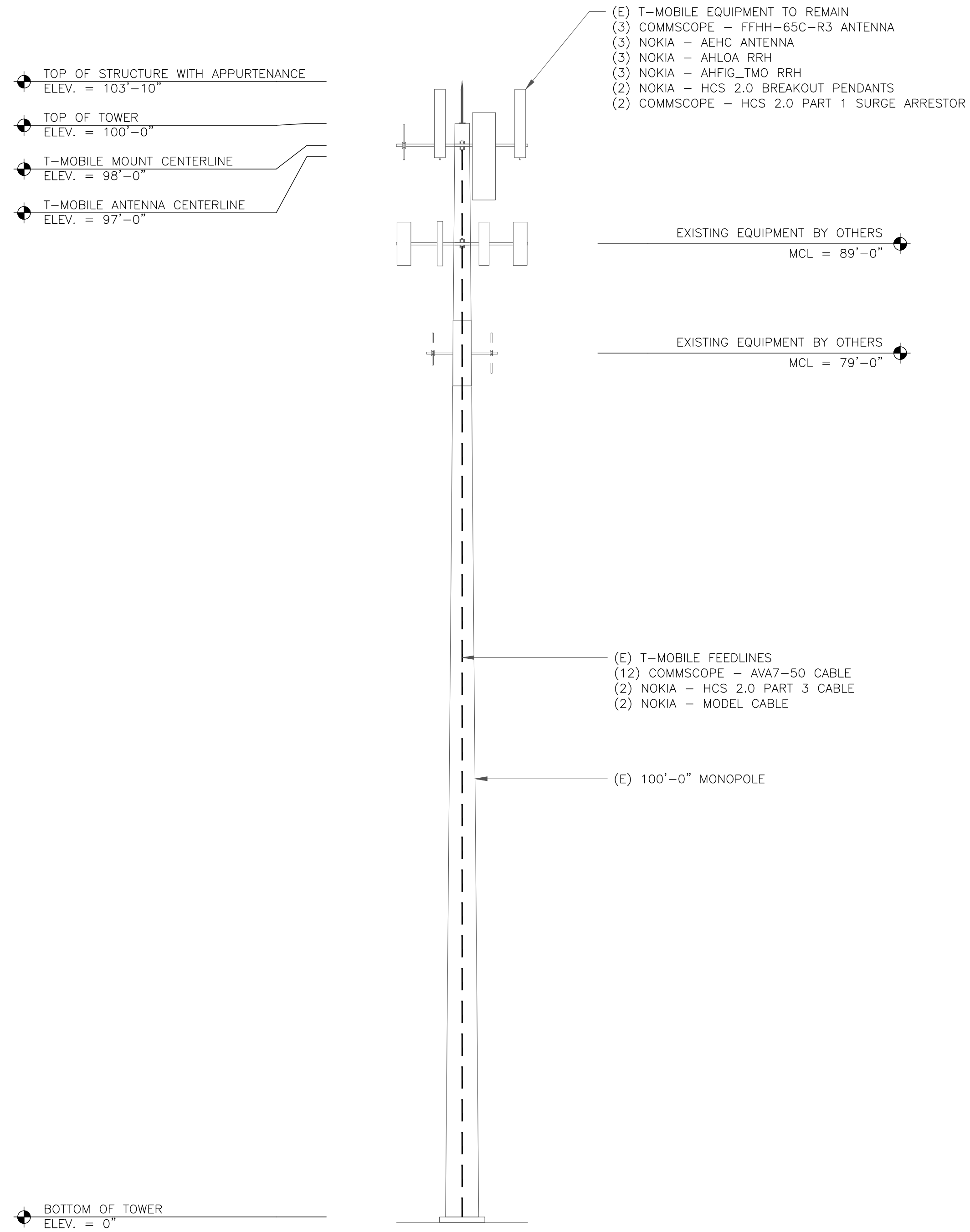
- (E) ANTENNA CL: 97'-0"
- (E) MOUNT CL: 98'-0"
- NEW MW DISH CL: 100'-0"
- NEW MOUNT CL: 100'-0"

INSTALLER NOTE:

TWIST AND SWAY LIMITATIONS OF TIA 222 G ANNEX D FOR THIS DISH MEET BOTH THE ALLOWABLE 3 DB DEGRADATION AND THE 10 DB DEGRADATION LIMIT.

EQUIPMENT LEGEND:

- EXISTING
- NEW/RELOCATED



T-MOBILE SITE NUMBER:
DN03486D

BU #: 823518
CS_CUCHARS_RANCH

3585 SAGUARO CIRCLE
COLORADO SPRINGS, CO
80925

EXISTING 100'-0"
MONOPOLE

ISSUED FOR:

REV	DATE	DRWN	DESCRIPTION	DES./QA
0	05/13/2024	WS	FINAL	GMA
1	04/30/2024	WS	JDX REVISION	GMA

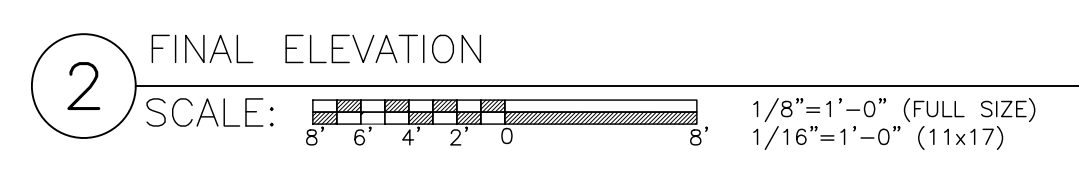
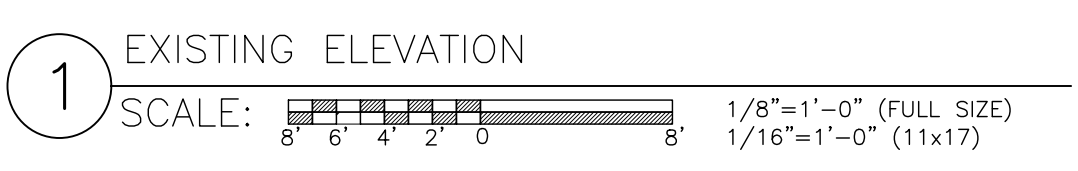


5/3/2024 | 10:03:54 AM CDT

CROWN CASTLE USA INC.
IT IS A VIOLATION OF LAW FOR ANY PERSON,
UNLESS THEY ARE ACTING UNDER THE DIRECTION
OF A LICENSED PROFESSIONAL ENGINEER,
TO ALTER THIS DOCUMENT.

SHEET NUMBER:
C-2

REVISION:
1





T-MOBILE SITE NUMBER:
DN03486D

BU #: **823518**
CS_CUCHARS_RANCH

3585 SAGUARO CIRCLE
COLORADO SPRINGS, CO
80925

EXISTING 100'-0"
MONOPOLE

ISSUED FOR:

REV	DATE	DRWN	DESCRIPTION	DES./QA
0	05/13/2024	WS	FINAL	GMA
1	04/30/2024	WS	JDX REVISION	GMA

DocuSigned by:
Graham Andrea



5/3/2024 | 10:03:54 AM CDT

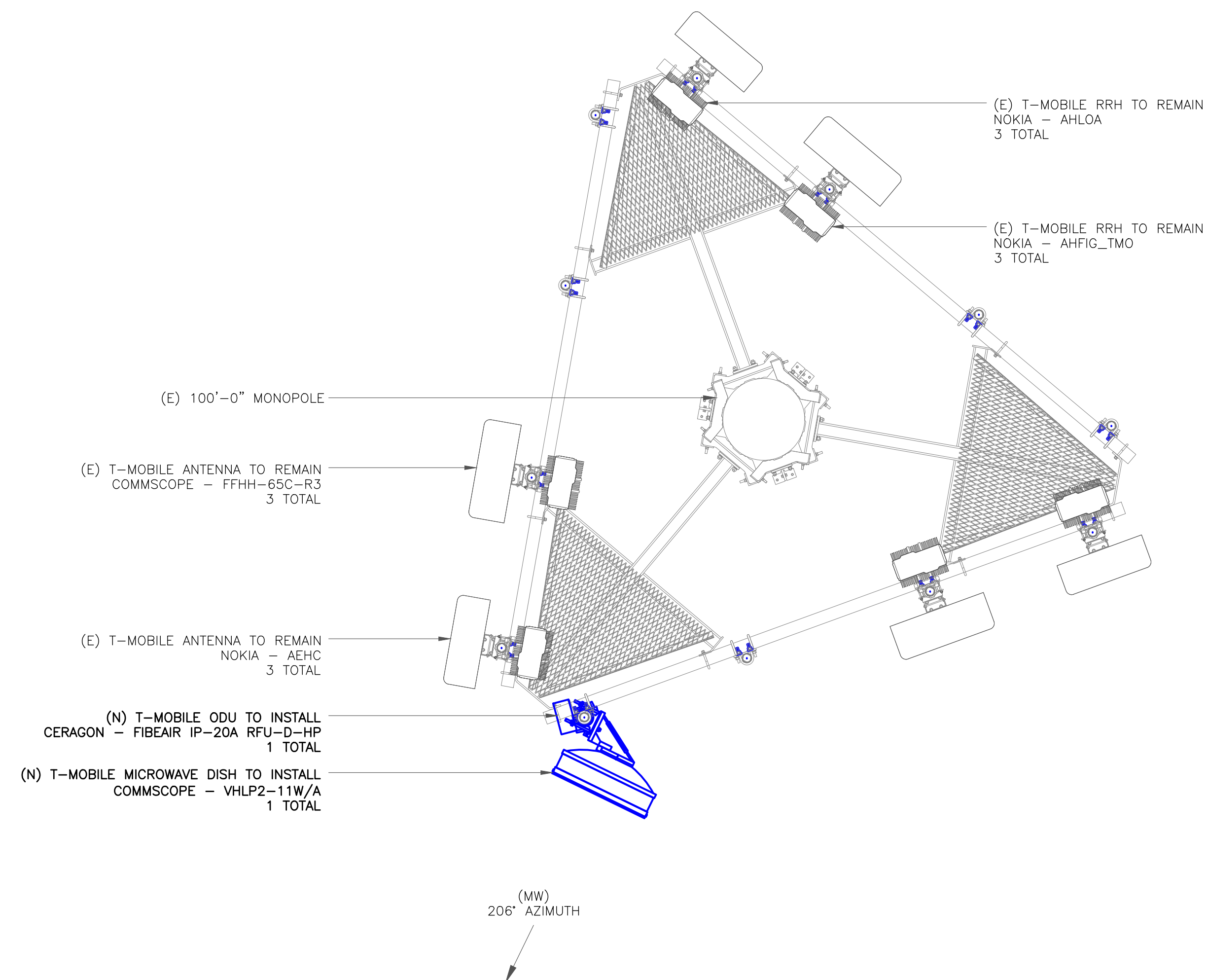
CROWN CASTLE USA INC.
IT IS A VIOLATION OF LAW FOR ANY PERSON,
UNLESS THEY ARE ACTING UNDER THE DIRECTION
OF A LICENSED PROFESSIONAL ENGINEER,
TO ALTER THIS DOCUMENT.

SHEET NUMBER:

C-3

REVISION:

1



1 FINAL MICROWAVE PLAN
SCALE: 1/2"=1'-0" (FULL SIZE)
1/4"=1'-0" (11x17)



INSTALLER NOTE:
TWIST AND SWAY LIMITATIONS OF TIA 222
G ANNEX D FOR THIS DISH MEET BOTH
THE ALLOWABLE 3 DB DEGRADATION AND
THE 10 DB DEGRADATION LIMIT.