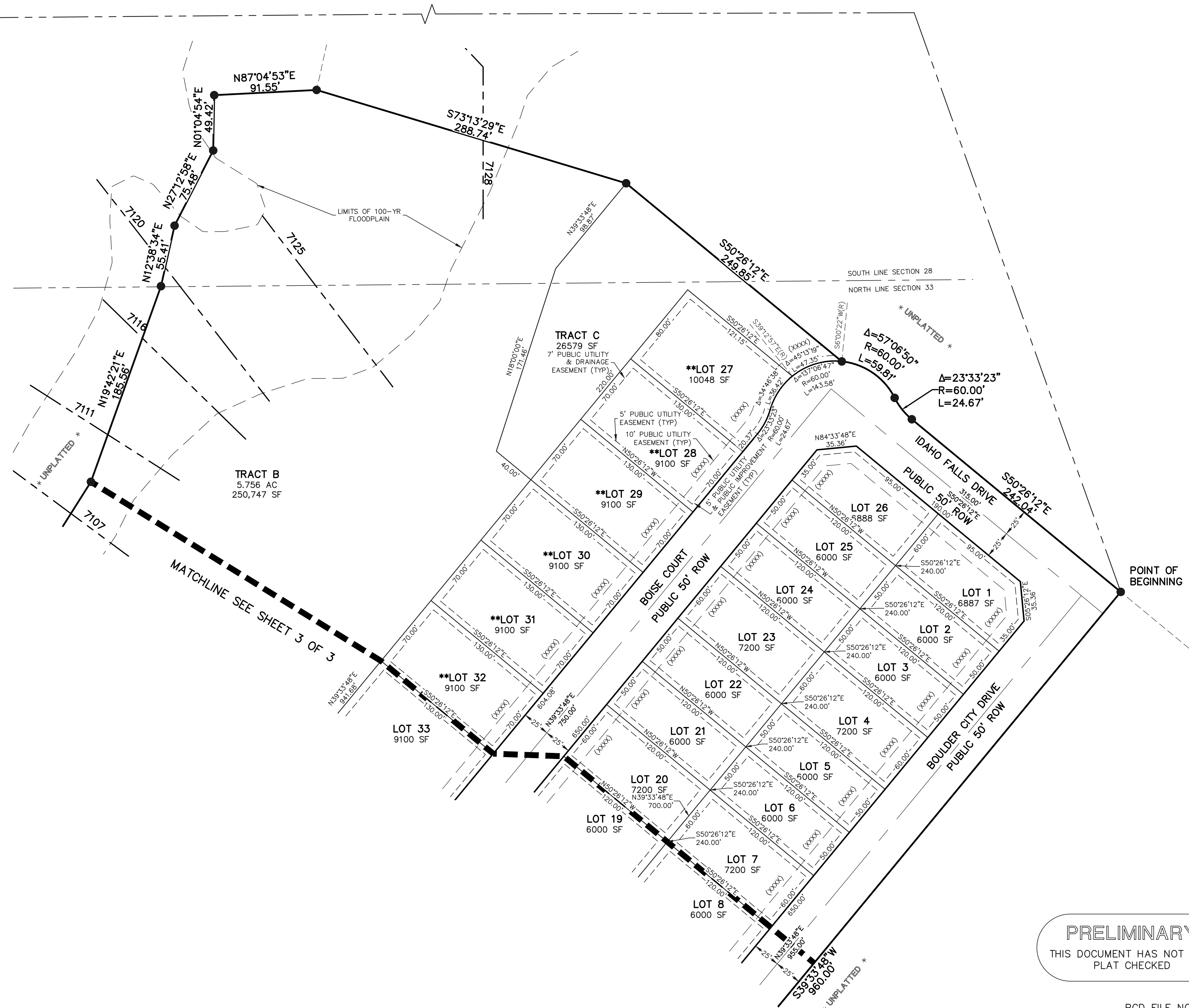
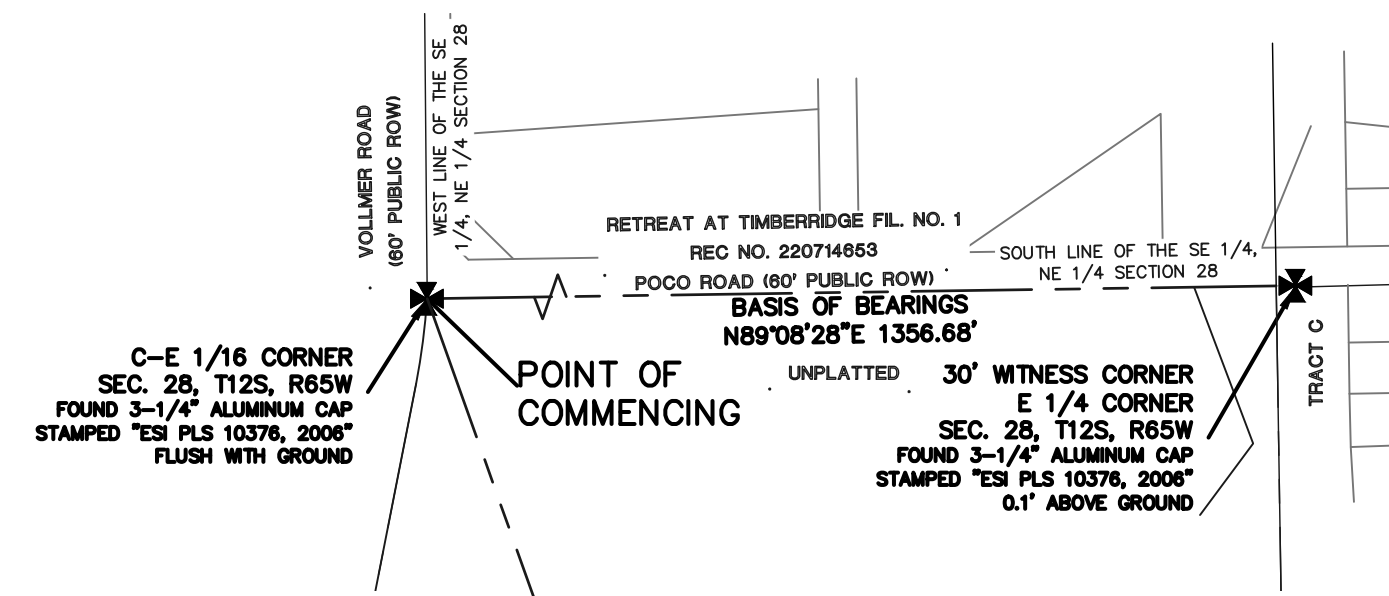


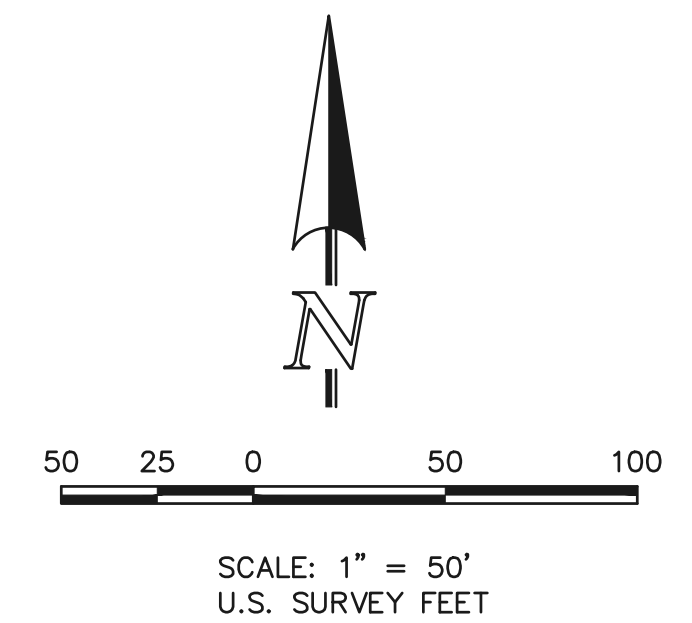


# STERLING RANCH EAST FILING NO. 2

A PORTION OF SECTIONS 28 AND 33, TOWNSHIP 12 SOUTH,  
RANGE 65 WEST OF THE SIXTH PRINCIPAL MERIDIAN,  
EL PASO COUNTY, COLORADO



- LEGEND**
- (R) RADIAL BEARING
  - AC ACRES
  - SF SQUARE FEET
  - (XXXX) ADDRESS
  - \* NOT PART OF THIS SUBDIVISION
  - 1-1/2" ALUMINUM SURVEYORS CAP STAMPED "CCES LLC PLS 34977" TO BE SET FLUSH UNLESS OTHERWISE NOTED
  - 7025 BASE FLOOD ELEVATION
  - \*\* SEE SHEET 1, NOTE 31



**PRELIMINARY**  
 THIS DOCUMENT HAS NOT BEEN  
 PLAT CHECKED

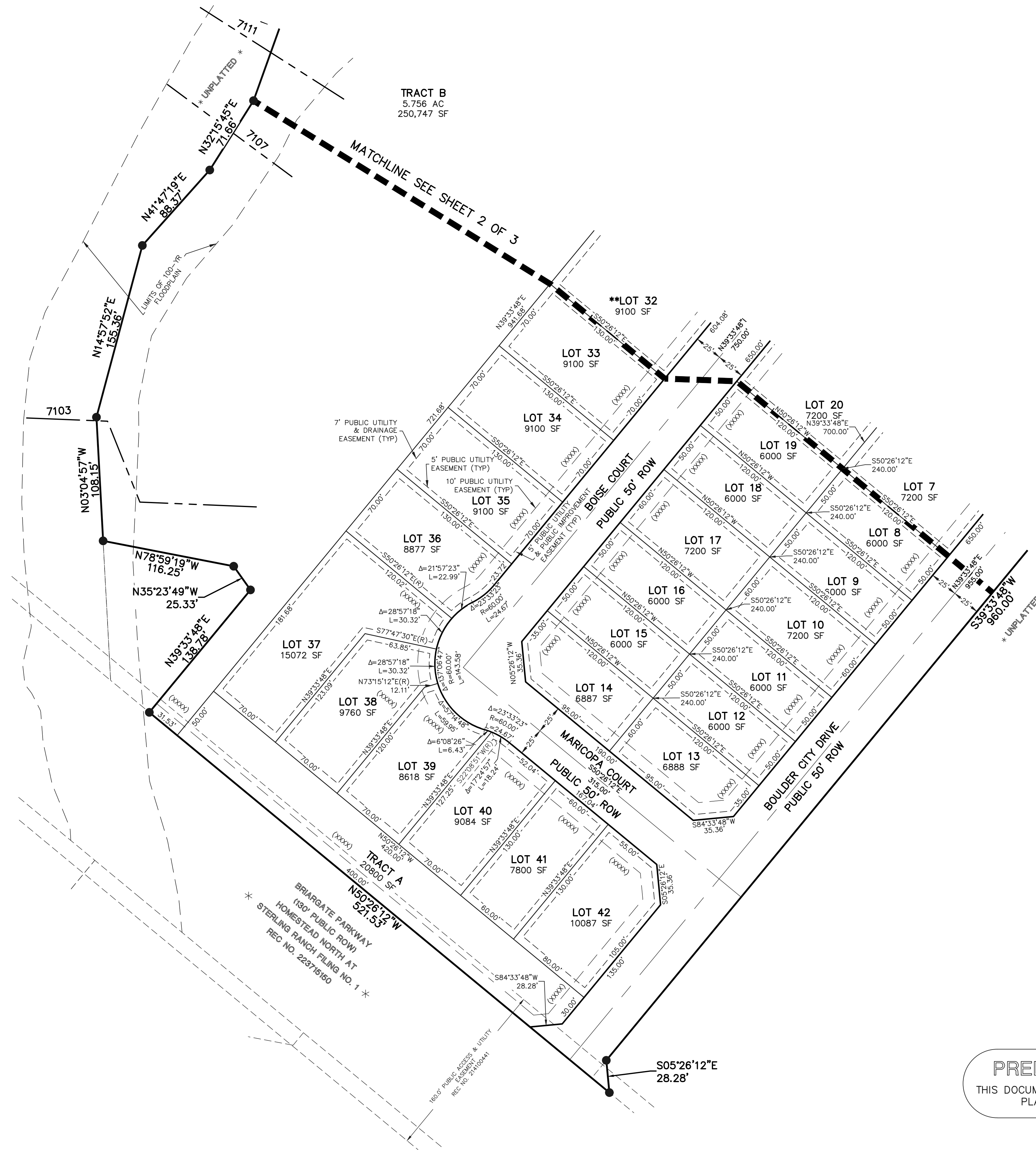


STERLING RANCH EAST  
 RANCH EAST FILING NO. 2  
 JOB NO. 1183.31  
 NOVEMBER 9, 2022  
 SHEET 2 OF 3

N:\11833\DRAWINGS\BUREAU\VIEW\PLAT\11833\IP2\F3.dwg, 11/13/2022 7:36:57 AM, 1:1, KS

# STERLING RANCH EAST FILING NO. 2

A PORTION OF SECTIONS 28 AND 33, TOWNSHIP 12 SOUTH,  
RANGE 65 WEST OF THE SIXTH PRINCIPAL MERIDIAN,  
EL PASO COUNTY, COLORADO

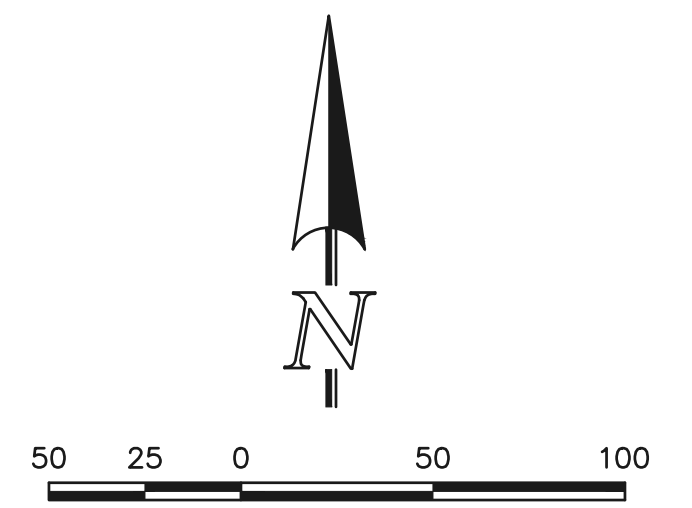


TRACT B  
5.756 AC  
250,747 SF

MATCHLINE SEE SHEET 2 OF 3

### LEGEND

- (R) RADIAL BEARING
- AC ACRES
- SF SQUARE FEET
- (XXXX) ADDRESS
- \* NOT PART OF THIS SUBDIVISION
- 1-1/2" ALUMINUM SURVEYORS CAP STAMPED "CCES LLC PLS 34977" TO BE SET FLUSH UNLESS OTHERWISE NOTED
- 7025 BASE FLOOD ELEVATION



SCALE: 1" = 50'  
U.S. SURVEY FEET

**PRELIMINARY**  
THIS DOCUMENT HAS NOT BEEN  
PLAT CHECKED



STERLING RANCH EAST  
FILING NO. 2  
JOB NO. 1183.31  
NOVEMBER 9, 2022  
SHEET 3 OF 3

619 N. Cascade Avenue, Suite 200  
Colorado Springs, Colorado 80903 (719)785-0790

PCD FILE NO.: SF-22-37

N:\118331\DRAWINGS\BUREAU\PLAT\118331P2.P3.dwg, 11/13/2022 7:36:59 AM, 1:1, KS