

HR GREEN - Xref: Vicinity-Map; EPC_CD_Approval: EPC_CD_Approval; EPC_CD_Description: EPC_CD_Description; Legend: Abbreviations; xc-dgn-030.202; xc-row-030.202; xc-dgn-240; xc-row-030.240; xgt-1-dh01-1030.240; EPC_GEC_Notes; FS_EPC_GEC_Owner_Approval; DMBROWNSKI, COLIN, 1/16/2025 10:13 AM

GRADING AND EROSION CONTROL NOTES:

- STORMWATER DISCHARGES FROM CONSTRUCTION SITES SHALL NOT CAUSE OR THREATEN TO CAUSE POLLUTION, CONTAMINATION, OR DEGRADATION OF STATE WATERS. ALL WORK AND EARTH DISTURBANCE SHALL BE DONE IN A MANNER THAT MINIMIZES POLLUTION OF ANY ON-SITE OR OFF-SITE WATERS, INCLUDING WETLANDS.
- NOTWITHSTANDING ANYTHING DEPICTED IN THESE PLANS IN WORDS OR GRAPHIC REPRESENTATION, ALL DESIGN AND CONSTRUCTION RELATED TO ROADS, STORM DRAINAGE, AND EROSION CONTROL SHALL CONFORM TO THE STANDARDS AND REQUIREMENTS OF THE MOST RECENT VERSION OF THE RELEVANT ADOPTED EL PASO COUNTY STANDARDS, INCLUDING THE CRITERIA MANUAL VOLUME 2. ANY DEVIATIONS FROM REGULATIONS AND STANDARDS MUST BE REQUESTED, AND APPROVED, IN WRITING.
- A SEPARATE STORMWATER MANAGEMENT PLAN (SWMP) FOR THIS PROJECT SHALL BE COMPLETED AND AN EROSION AND STORMWATER QUALITY CONTROL PERMIT (ESQCP) ISSUED PRIOR TO COMMENCING CONSTRUCTION. MANAGEMENT OF THE SWMP DURING CONSTRUCTION IS THE RESPONSIBILITY OF THE DESIGNATED QUALIFIED STORMWATER MANAGER OF CERTIFIED EROSION CONTROL INSPECTOR. THE SWMP SHALL BE LOCATED ON SITE AT ALL TIMES DURING CONSTRUCTION AND SHALL BE KEPT UP TO DATE WITH WORK PROGRESS AND CHANGES IN THE FIELD.
- ONCE THE ESQCP IS APPROVED AND A "NOTICE TO PROCEED" HAS BEEN ISSUED, THE CONTRACTOR MAY INSTALL THE INITIAL STAGE EROSION AND SEDIMENT CONTROL MEASURES AS INDICATED ON THE APPROVED GEC. A PRECONSTRUCTION MEETING BETWEEN THE CONTRACTOR, ENGINEER, AND THE EL PASO COUNTY WILL BE HELD PRIOR TO ANY CONSTRUCTION. IT IS THE RESPONSIBILITY OF THE APPLICANT TO COORDINATE THE MEETING TIME AND PLACE WITH COUNTY STAFF.
- CONTROL MEASURES MUST BE INSTALLED PRIOR TO COMMENCEMENT OF ACTIVITIES THAT COULD CONTRIBUTE POLLUTANTS TO STORMWATER. CONTROL MEASURES FOR ALL SLOPES, CHANNELS, DITCHES, AND DISTURBED LAND AREAS SHALL BE INSTALLED IMMEDIATELY UPON COMPLETION OF THE DISTURBANCE.
- ALL TEMPORARY SEDIMENT AND EROSION CONTROL MEASURES SHALL BE MAINTAINED AND REMAIN IN EFFECTIVE OPERATION UNTIL PERMANENT SOIL EROSION CONTROL MEASURES ARE IMPLEMENTED AND FINAL STABILIZATION IS ESTABLISHED. ALL PERSONS ENGAGED IN LAND DISTURBANCE ACTIVITIES SHALL ASSESS THE ADEQUACY OF CONTROL MEASURES AT THE SITE AND IDENTIFY IF CHANGES TO THOSE CONTROL MEASURES ARE NEEDED TO ENSURE THE CONTINUED EFFECTIVE PERFORMANCE OF THE CONTROL MEASURES. ALL CHANGES TO TEMPORARY SEDIMENT AND EROSION CONTROL MEASURES MUST BE INCORPORATED INTO THE STORMWATER MANAGEMENT PLAN.
- TEMPORARY STABILIZATION SHALL BE IMPLEMENTED ON DISTURBED AREAS AND STOCKPILES WHERE GROUND DISTURBING ACTIVITY HAS PERMANENTLY CEASED OR TEMPORARILY CEASED FOR LONGER THAN 14 DAYS
- FINAL STABILIZATION MUST BE IMPLEMENTED AT ALL APPLICABLE CONSTRUCTION SITES. FINAL STABILIZATION IS ACHIEVED WHEN ALL GROUND DISTURBING ACTIVITIES ARE COMPLETE AND ALL DISTURBED AREAS EITHER HAVE A UNIFORM VEGETATIVE COVER WITH INDIVIDUAL PLANT DENSITY OF 70 PERCENT OF PRE-DISTURBANCE LEVELS ESTABLISHED OR EQUIVALENT PERMANENT ALTERNATIVE STABILIZATION METHOD IS IMPLEMENTED. ALL TEMPORARY SEDIMENT AND EROSION CONTROL MEASURES SHALL BE REMOVED UPON FINAL STABILIZATION AND BEFORE PERMIT CLOSURE.
- ALL PERMANENT STORMWATER FACILITIES SHALL BE INSTALLED AS DESIGNED IN THE APPROVED PLANS. ANY PROPOSED CHANGES THAT EFFECT THE DESIGN OF FUNCTION OF PERMANENT STORMWATER MANAGEMENT STRUCTURES MUST BE APPROVED BY THE ECM ADMINISTRATOR PRIOR TO IMPLEMENTATION.
- EARTH DISTURBANCES SHALL BE CONDUCTED IN SUCH A MANNER AS TO EFFECTIVELY MINIMIZE ACCELERATED SOIL EROSION AND RESULTING SEDIMENTATION. ALL DISTURBANCES SHALL BE DESIGNED, CONSTRUCTED, AND COMPLETED SO THAT THE EXPOSED AREA OF ANY DISTURBED LAND SHALL BE LIMITED TO THE SHORTEST PRACTICAL PERIOD OF TIME. PRE-EXISTING VEGETATION SHALL BE PROTECTED AND MAINTAINED WITHIN 50 HORIZONTAL FEET OF A WATERS OF THE STATE UNLESS SHOWN TO BE INFEASIBLE AND SPECIFICALLY REQUESTED AND APPROVED.
- COMPACTION OF SOIL MUST BE PREVENTED IN AREAS DESIGNATED FOR INFILTRATION CONTROL MEASURES OF WHERE FINAL STABILIZATION WILL BE ACHIEVED BY VEGETATIVE COVER. AREAS DESIGNATED FOR INFILTRATION CONTROL MEASURES SHALL ALSO BE PROTECTED FROM SEDIMENTATION DURING CONSTRUCTION UNTIL FINAL STABILIZATION IS ACHIEVED. IF COMPACTION PREVENTION IS NOT FEASIBLE DUE TO SITE CONSTRAINTS, ALL AREAS DESIGNATED FOR INFILTRATION AND VEGETATION CONTROL MEASURES MUST BE LOOSENEED PRIOR TO INSTALLATION OF THE CONTROL MEASURE(S)
- ANY TEMPORARY OR PERMANENT FACILITY DESIGNED AND CONSTRUCTED FOR THE CONVEYANCE OF STORMWATER AROUND, THROUGH, OR FROM THE EARTH DISTURBANCE AREA SHALL BE A STABILIZED CONVEYANCE DESIGNED TO MINIMIZE EROSION AND THE DISCHARGE OF SEDIMENT OFF SITE.
- CONCRETE WASH WATER SHALL BE CONTAINED AND DISPOSED OF IN ACCORDANCE WITH THE SWMP. NO WASH WATER SHALL BE DISCHARGED TO OR ALLOWED TO ENTER STATE WATERS, INCLUDING ANY SURFACE OR SUBSURFACE STORM DRAINAGE SYSTEM OR FACILITIES. CONCRETE WASHOUTS SHALL NOT BE LOCATED IN AN AREA WHERE SHALLOW GROUNDWATER MAY BE PRESENT, OR WITHIN 50 FEET OF A SURFACE WATER BODY, CREEK OR STREAM.
- DURING DEWATERING OPERATIONS OF UNCONTAMINATED GROUND WATER MAY BE DISCHARGED ON SITE, BUT SHALL NOT LEAVE THE SITE IN THE FORM OF SURFACE RUNOFF UNLESS AN APPROVED STATE DEWATERING PERMIT IS IN PLACE.
- EROSION BLANKET OR OTHER PROTECTIVE COVERING SHALL BE USED ON SLOPES STEEPER THAN 3:1.
- CONTRACTOR SHALL BE RESPONSIBLE FOR THE REMOVAL OF ALL WASTES FROM THE CONSTRUCTION SITE FOR DISPOSAL IN ACCORDANCE WITH LOCAL AND STATE REGULATORY REQUIREMENTS. NO CONSTRUCTION DEBRIS, TREE SLASH, BUILDING MATERIAL WASTES OR UNUSED BUILDING MATERIALS SHALL BE BURIED, DUMPED OR DISCHARGED AT THIS SITE.
- WASTE MATERIALS SHALL NOT BE TEMPORARILY PLACED OR STORED IN THE STREET, ALLEY OR OTHER PUBLIC WAY, UNLESS IN ACCORDANCE WITH AN APPROVED TRAFFIC CONTROL PLAN. CONTROL MEASURES MAY BE REQUIRED BY EL PASO COUNTY ENGINEERING IF DEEMED NECESSARY, BASED ON SPECIFIC CONDITIONS AND CIRCUMSTANCES.
- TRACKING OF SOILS AND CONSTRUCTION DEBRIS OFF-SITE SHALL BE MINIMIZED. MATERIALS TRACKED OFF-SITE SHALL BE CLEANED UP PROPERLY AND PROPERLY DISPOSED OF IMMEDIATELY.
- THE OWNER/DEVELOPER SHALL BE RESPONSIBLE FOR THE REMOVAL OF ALL CONSTRUCTION, DEBRIS, DIRT, TRASH, ROCK, SEDIMENT, SOIL AND SAND THAT MAY ACCUMULATE IN ROADS, STORM DRAINS AND OTHER DRAINAGE CONVEYANCE SYSTEMS AND STORMWATER APPURTENANCES AS A RESULT OF THE SITE DEVELOPMENT.
- THE QUANTITY OF MATERIALS STORED ON THE PROJECT SITE SHALL BE LIMITED, AS MUCH AS PRACTICAL, TO THAT QUANTITY REQUIRED TO PERFORM THE WORK IN AN ORDERLY SEQUENCE. ALL MATERIALS STORED ON-SITE SHALL BE STORED IN AN EAT, ORDERLY MANNER, IN THEIR ORIGINAL CONTAINERS, WITH ORIGINAL MANUFACTURER'S LABEL.
- NO CHEMICAL(S) HAVING THE POTENTIAL TO BE RELEASED IN STORMWATER ARE TO BE STORED OR USED ONSITE UNLESS PERMISSION FOR THE USE OF SUCH CHEMICAL(S) IS GRANTED IN WRITING BY THE ECM ADMINISTRATOR. IN GRANTING APPROVAL FOR THE USE OF SUCH CHEMICAL(S) SPECIAL CONDITIONS AND MONITORING MAY BE REQUIRED.
- BULK STORAGE OF ALLOWED PETROLEUM PRODUCTS OR OTHER ALLOWED LIQUID CHEMICALS IN EXCESS OF 55 GALLONS SHALL REQUIRED ADEQUATE SECONDARY PROTECTION TO CONTAIN AL SPILLS ONSITE AND TO PREVENT ANY SPILLED MATERIALS FROM ENTERING STATE WATERS, ANY SURFACE OR SUBSURFACE STORM DRAINAGE SYSTEM OR OTHER FACILITIES.
- NO PERSON SHALL CAUSE THE IMPEDIMENT OF STORMWATER FLOW IN THE CURB AND GUTTER OR DITCH EXCEPT WITH APPROVED SEDIMENT CONTROL MEASURES.
- OWNER/DEVELOPER AND THEIR AGENTS SHALL COMPLY WITH THE "COLORADO WATER QUALITY CONTROL ACT" (TITLE 25, ARTICLE 8, CRS) AND THE "CLEAN WATER ACT" (33 USC 1344), IN ADDITION TO THE REQUIREMENTS OF THE LAND DEVELOPMENT CODE, DCM VOLUME II AND ECM APPENDIX I. ALL APPROPRIATE PERMITS MUST BE OBTAINED BY THE CONTRACTOR PRIOR TO CONSTRUCTION (1041, NPDES, FLOODPLAIN, 404, FUGITIVE DUST, ETC). IN THE EVENT OF CONFLICTS BETWEEN THESE REQUIREMENTS AND OTHER LAWS RULES OR REGULATIONS OF OTHER FEDERAL, STATE, LOCAL OR COUNTY AGENCIES, THE MOST RESTRICTIVE LAWS, RULES OR REGULATIONS SHALL APPLY.
- ALL CONSTRUCTION TRAFFIC MUST ENTER/EXIT THE SITE ONLY AT APPROVED CONSTRUCTION ACCESS POINTS.
- PRIOR TO CONSTRUCTION THE PERMITEE SHALL VERIFY THE LOCATION OF EXISTING UTILITIES.
- A WATER SOURCE SHALL BE AVAILABLE ON SITE DURING EARTHWORK OPERATIONS AND SHALL BE UTILIZED AS REQUIRED TO MINIMIZE DUST FROM EARTHWORK EQUIPMENT AND WIND.
- THE SOILS REPORT FOR THE SITE HAS BEEN PREPARED BY ENTECH ENGINEERING, INC. DATED SEPTEMBER 11, 2024 AND SHALL BE CONSIDERED A PART OF THESE PLANS.
- AT LEAST (10) DAYS PRIOR TO THE ANTICIPATED START OF CONSTRUCTION, FOR PROJECTS THAT WILL DISTURB ONE (1) ACRE OR MORE, THE OWNER OR OPERATOR OF CONSTRUCTION ACTIVITY SHALL SUBMIT A PERMIT APPLICATION FOR STORMWATER DISCHARGE TO THE COLORADO DEPARTMENT OF PUBLIC HEALTH AND ENVIRONMENT, WATER QUALITY DIVISION. THE APPLICATION CONTAINS CERTIFICATION OF COMPLETION OF A STORMWATER MANAGEMENT PLAN (SWMP), OF WHICH THIS GRADING AND EROSION CONTROL PLAN MAY BE A PART. FOR INFORMATION OR APPLICATION MATERIALS CONTACT:

COLORADO DEPARTMENT OF PUBLIC HEALTH AND ENVIRONMENT
 WATER QUALITY CONTROL DIVISION
 WQCD - PERMITS
 4300 CHERR CREEK DRIVE SOUTH
 DENVER, CO 80246-1530
 ATTN: PERMITS UNIT

FROUDE NUMBER CALCULATIONS: 100-YR

SECTION	VELOCITY FT/S	GRAVITATIONAL CONSTANT FT/S ²	HYDRAULIC DEPTH FT	XSECTIONAL AREA FT ²	TOP WIDTH FT	FROUDE #
A-A	5.79	32.17	0.88	47.30	53.49	1.09
B-B	3.92	32.17	0.55	18.30	33.21	0.93
C-C	5.61	32.17	0.69	7.59	10.99	1.19
D-D	3.91	32.17	0.55	48.50	88.91	0.93
E-E	4.84	32.17	0.23	1.00	4.31	1.77
F-F	7.56	32.17	1.34	39.40	29.43	1.15
G-G	6.86	32.17	0.44	3.10	7.00	1.82
H-H	7.75	32.17	1.51	36.60	24.18	1.11
I-I	8.90	32.17	0.76	10.50	13.74	1.79
J-J	4.31	32.17	0.31	8.30	27.05	1.37
K-K	3.08	32.17	0.19	8.40	43.34	1.23
L-L	1.57	32.17	0.10	3.60	35.03	0.86
M-M	4.10	32.17	0.40	4.30	10.74	1.14
SECTION A1	6.10	32.17	0.70	6.90	9.81	1.28
SECTION A2	5.23	32.17	0.65	6.00	9.20	1.14
SECTION B	5.24	32.17	0.72	7.20	10.06	1.09
SECTION C	4.14	32.17	0.61	5.30	8.65	0.93
SECTION D	5.25	32.17	0.62	5.30	8.58	1.18
SECTION E	5.78	32.17	0.70	8.80	12.55	1.22

SHEAR STRESS CALCULATIONS: 100-YR

SECTION	UNIT WEIGHT OF WATER LB/FT ³	DEPTH OF FLOW FT	SLOPE FT/FT	SHEAR STRESS LB/FT ²
A-A	62.43	1.10	0.022	1.51
B-B	62.43	0.70	0.019	0.83
C-C	62.43	1.40	0.030	2.62
D-D	62.43	0.80	0.019	0.95
E-E	62.43	0.50	0.090	2.81
F-F	62.43	2.70	0.022	3.71
G-G	62.43	0.90	0.082	4.61
H-H	62.43	3.00	0.020	3.75
I-I	62.43	1.50	0.065	6.09
J-J	62.43	0.40	0.050	1.25
K-K	62.43	0.40	0.05	1.17
L-L	62.43	0.10	0.028	0.17
M-M	62.43	0.60	0.032	1.20
SECTION A1	62.43	1.40	0.035	3.06
SECTION A2	62.43	1.30	0.028	2.27
SECTION B	62.43	1.40	0.025	2.19
SECTION C	62.43	1.20	0.019	1.42
SECTION D	62.43	1.20	0.031	2.32
SECTION E	62.43	1.40	0.031	2.71

CHANNEL LINING DETERMINATION

SECTION	CALCULATED VALUES		P300 MAX VALUES		LINING REQUIRED
	SHEAR STRESS	VELOCITY	SHEAR STRESS	VELOCITY	
A-A	1.51	5.79	3.00	9.00	NONE
B-B	0.83	3.92	3.00	9.00	P300
C-C	2.62	5.61	3.00	9.00	P300
D-D	0.95	3.91	3.00	9.00	NONE
E-E	2.81	4.84	3.00	9.00	P300
F-F	3.71	7.56	3.00	9.00	TMAX
G-G	4.61	6.86	3.00	9.00	TMAX
H-H	3.75	7.75	3.00	9.00	TMAX
I-I	6.09	8.90	3.00	9.00	TMAX
J-J	1.25	4.31	3.00	9.00	NONE
K-K	1.17	3.08	3.00	9.00	NONE
L-L	0.17	1.57	3.00	9.00	NONE
M-M	1.20	4.10	3.00	9.00	NONE
SECTION A1	3.06	6.10	3.00	9.00	P300
SECTION A2	2.27	5.23	3.00	9.00	P300
SECTION B	2.19	4.24	3.00	9.00	P300
SECTION C	1.42	4.14	3.00	9.00	P300
SECTION D	2.32	5.25	3.00	9.00	P300
SECTION E	2.71	5.78	3.00	9.00	P300

ABBREVIATIONS

Δ	DEFLECTION ANGLE	FOC	FIBER OPTICS CABLE
Ø	DIA	FT	FOOT OR FEET
AASHTO	AMERICAN ASSOCIATION OF STATE HIGHWAY AND TRANSPORTATION OFFICIALS	GB	GRADE BREAK
ABC	ASPHALT BASE COURSE	GAL	GALLON
ABD	ABANDONED	HDPE	HIGH DENSITY POLYETHYLENE
AC	ACRE	HC RAMP	HANDICAP RAMP
ADA	THE AMERICANS WITH DISABILITIES ACT	HW	HEADWALL
ASPH	ASPHALT	INV	INVERT
ASSY	ASSEMBLY	KM	KILOMETER
ASTM	AMERICAN SOCIETY FOR TESTING MATERIALS	L	LENGTH
BFE	BASE FLOOD ELEVATION	LF	LINEAR FEET
BLDG	BUILDING	M	METER
BLVD	BOULEVARD	MIN	MINIMUM
BM	BENCH MARK	MISC	MISCELLANEOUS
BNDY	BOUNDARY	MAINT	MAINTENANCE
BOP	BOTTOM OF POND	MAX	MAXIMUM
BW	BOTTOM OF WALL	MH	MANHOLE
C&G	CURB AND GUTTER	MP	MIDPOINT
CA	COARSE AGGREGATE	N	NORTH/NORTHING
CATV	CABLE TELEVISION	NO	NUMBER
CB	CHORD BEARING/CATCH BASIN	OC	ON CENTER
CFS	CUBIC FEET PER SECOND	OH	OVERHEAD
CIP	CAST IRON PIPE	PB	PUBLIC
CL	CENTER LINE	PC	POINT OF CURVATURE
CMP	CORRUGATED METAL PIPE	PCC	POINT OF COMPOUND CURVATURE
COMP	COMPOSITE	PCR	POINT OF CURB RETURN
CONC	CONCRETE	PI	POINT OF INTERSECTION
CONST	CONSTRUCT OR CONSTRUCTION	PIE	PUBLIC IMPROVEMENT ESMT
CSP	CORRUGATED STEEL PIPE	PT	POINT OF TANGENCY
CSU	COLORADO SPRINGS UTILITIES	PRC	PROPOSED
CT	COURT	PRV	POINT OF REVERSE CURVATURE
CTR	CENTER	PVT	PRESSURE REDUCING VALVE
CU	COPPER	PVT	PRIVATE
CY	CUBIC YARD	PUE	PUBLIC UTILITY AND ACCESS ESMT
DBL	DOUBLE	PUCD	PUBLIC UTILITY, ACCESS AND DRAINAGE ESMT
DEG	DEGREE	PVC	POLYVINYL CHLORIDE
DET	DETAIL	R	RADIUS
DEPT	DEPARTMENT	REC	RECEPTION
DIM	DIMENSION	RCCB	REINFORCED CONCRETE BOX CULVERT
DIP	DUCTILE IRON PIPE	S	SOUTH
DOT	DEPARTMENT OF TRANSPORTATION	SHT	SHEET
DWG	DRAWING	SQ	SQUARE
E	EAST/EASTING	SW	SPILLWAY
EL	ELEVATION	TBC	TOP BACK OF CURB
ELEC	ELECTRIC	TC	TRICKLE CHANNEL
EOG	EDGE OF GUTTER	TOP	TOP OF POND
EOP	EDGE OF PAVEMENT	TW	TOP OF WALL
ESMT	EASEMENT	TYP	TYPICAL
EW	ENDWALL	UG	UNDERGROUND
EX	EXISTING	VERT	VERTICAL
FD	FRENCH DRAIN	W	WEST
FDC	FIRE DEPARTMENT CONNECTION	WW	WASTEWATER
FE	FLANGE ELEVATION	WWF	WELDED WIRE FABRIC
FES	FLANGED END SECTION	W/	WITH
FF	FINISHED FLOOR	W/O	WITHOUT
FG	FINISHED GRADE	YD	YARD
FH	FIRE HYDRANT		
FLWA	FEDERAL HIGHWAY ADMINISTRATION		
FL	FLOW LINE		

LEGEND

<p>EXISTING</p> <p>MATCH LINE</p> <p>FILING LINE</p> <p>SECTION LINE</p> <p>PROPERTY LINE</p> <p>EASEMENT LINE</p> <p>RIGHT OF WAY</p> <p>CENTERLINE</p> <p>CHAIN LINK FENCE</p> <p>WOODEN FENCE</p> <p>ROD IRON FENCE</p> <p>RAILROAD</p> <p>CABLE TV</p> <p>U.G. ELECTRIC</p> <p>OVERHEAD ELECTRIC</p> <p>FIBER OPTIC</p> <p>GAS MAIN</p> <p>SANITARY SEWER</p> <p>STORM DRAIN</p> <p>TELEPHONE</p> <p>WATER MAIN</p> <p>SWALE</p> <p>TRAIL</p> <p>CURB & GUTTER</p> <p>DRAINAGE BASIN</p> <p>INDEX CONTOUR</p> <p>INTER CONTOUR</p> <p>100-YR FLOODPLAIN</p> <p>FLOODWAY</p> <p>EDGE OF WETLANDS</p> <p>DRAINAGE</p> <p>DRAINAGE BASIN</p> <p>BASIN TAG</p> <p>DESIGN POINT</p>	<p>PROPOSED</p> <p>MANHOLE</p> <p>STORM INLET</p> <p>FLANGED END SECTION</p> <p>RIPRAP</p> <p>SANITARY SEWER</p> <p>CLEAN OUT</p> <p>MANHOLE</p> <p>PLUG</p> <p>WATER</p> <p>FIRE HYDRANT</p> <p>FIRE DEPT. CONNECTION</p> <p>GATE VALVE</p> <p>MANHOLE</p> <p>METER</p> <p>TEE</p> <p>REDUCER</p> <p>DRY UTILITIES</p> <p>ELECTRIC METER</p> <p>ELECTRIC PEDESTAL</p> <p>ELECTRIC CABINET</p> <p>ELECTRIC VAULT</p> <p>FIBER OPTIC PULL BOX</p> <p>FIBER OPTIC MANHOLE</p> <p>FIBER OPTIC PEDESTAL</p> <p>FIBER OPTIC SIGN</p> <p>FIBER OPTIC VAULT</p> <p>GAS METER</p> <p>GAS SIGN</p> <p>GAS VAULT</p> <p>TELEPHONE CABINET</p> <p>TELEPHONE MANHOLE</p> <p>TELEPHONE SIGNAL/MAST</p> <p>TELEPHONE SIGN</p> <p>TELEPHONE PEDESTAL</p> <p>TRANSFORMER</p> <p>LIGHT POLE</p> <p>FIBER OPTIC VAULT</p>	<p>MISCELLANEOUS</p> <p>SIGN</p> <p>BOLLARD</p> <p>ACCESSIBLE PARKING</p>
--	---	--

DRAWN BY: AMC	JOB DATE: 12/5/2024	BAR IS ONE INCH ON OFFICIAL DRAWINGS.
APPROVED: RDL	JOB NUMBER: 211030.240	0
CAD DATE: 1/16/2025		IF NOT ONE INCH, ADJUST SCALE ACCORDINGLY.
CAD FILE: J:\2021\211030\CAD\DWG\IC\Filing_No_4\GEC\GEC-Cover		

NO.	DATE	BY	REVISION DESCRIPTION

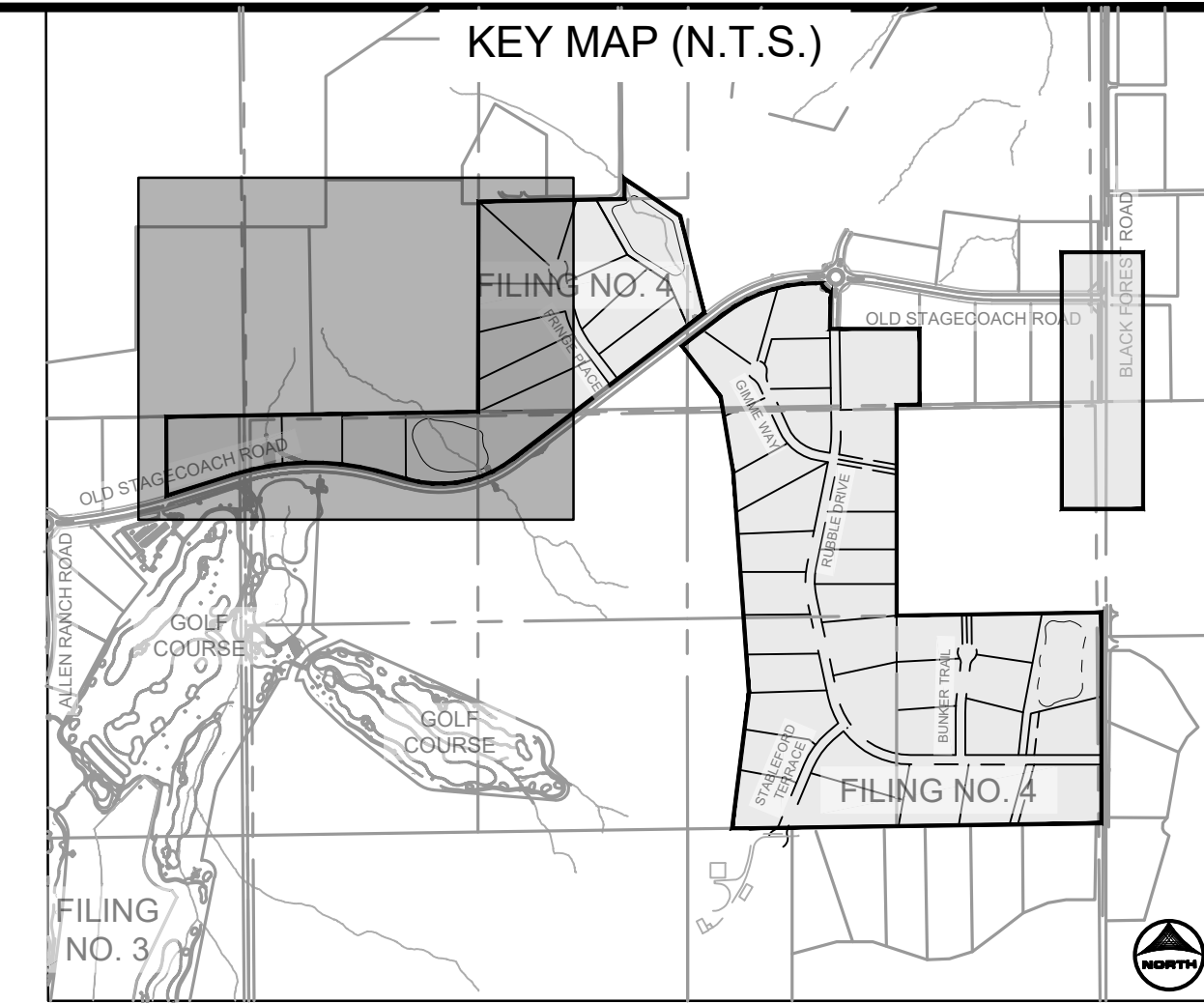
HRGreen

HR GREEN - COLORADO SPRINGS
 1975 RESEARCH PARKWAY SUITE 160
 COLORADO SPRINGS, CO 80920
 PHONE: 719.300.4140
 FAX: 713.965.0044

FLYING HORSE NORTH FILING 4
PRI #2, LLC.
 EL PASO COUNTY, CO

GRADIN & EROSION CONTROL PLAN
LEGEND & NOTES

SHEET
LG
2



GEC LEGEND:

[Symbol]	SILT FENCE	PHASE:	INITIAL/INTERIM
[Symbol]	STABILIZED STAGING AREA	INITIAL/INTERIM	
[Symbol]	STOCKPILE MANAGEMENT	INITIAL/INTERIM	
[Symbol]	INLET PROTECTION: IP-1 TO BE USED ON ALL INLETS	INTERIM	
[Symbol]	CULVERT INLET PROTECTION	INTERIM	
[Symbol]	VEHICLE TRACKING CONTROL	INITIAL	
[Symbol]	DRAINAGE SWALE	INTERIM	
[Symbol]	LIMITS OF CONSTRUCTION	INITIAL/INTERIM/FINAL	
[Symbol]	LIMITS OF DISTURBANCE	INITIAL/INTERIM/FINAL	
[Symbol]	CUT CONDITION		
[Symbol]	FILL CONDITION		
[Symbol]	FLOW DIRECTION		
[Symbol]	EROSION CONTROL BLANKET	INTERIM/FINAL	
[Symbol]	CHECK DAM (STRAW BALE)	INTERIM	
[Symbol]	CONCRETE WASH OUT	INITIAL	
[Symbol]	TEMPORARY SEDIMENT BASIN	INITIAL	
[Symbol]	TSB TRIBUTARY AREA DELINEATION	INITIAL	

- GRADING & EROSION CONTROL PLAN NOTES:**
- SEE SHEETS 11-12 FOR EL PASO COUNTY GRADING AND EROSION CONTROL DETAILS.
 - ALL STORMWATER MANAGEMENT MEASURES SHOWN ON THIS PLAN MUST BE INSTALLED AND MAINTAINED PER THE EL PASO COUNTY STORMWATER CONSTRUCTION MANUAL; LATEST REVISIONS.
 - AREA WITHIN LIMITS OF DISTURBANCE TO BE CLEARED, GRUBBED AND STOCKPILED PRIOR TO IMPORT OF ANY FILL.
 - ALL GREATER THAN 4:1 SLOPES MUST RECEIVE SLOPE TRACKING TREATMENT AND EROSION CONTROL BLANKET.
 - STOCKPILES REQUIRED DURING ONSITE CONSTRUCTION ACTIVITIES WILL BE PLACED AT THE DISCRETION OF THE CONTRACTOR. STOCKPILING OF MATERIAL MUST NOT OCCUR OUTSIDE THE LIMITS OF DISTURBANCE SHOWN ON THIS PLAN.
 - NON-STRUCTURAL CONTROLS (I.E. STREET SWEEPING) WILL BE AT THE DISCRETION OF THE PROJECT'S CERTIFIED GEC ADMINISTRATOR THROUGHOUT THE DURATION OF LAND DISTURBING ACTIVITIES.
 - THERE ARE NO ANTICIPATED ASPHALT AND/OR CONCRETE BATCH PLANTS, OR MASONRY MIX STATIONS ASSOCIATED WITH THIS PROJECT. IF THE CONTRACTOR REQUIRES A ASPHALT/CONCRETE BATCH PLANTS OR MASONRY MIX STATIONS, THESE PLANS WILL BE AMENDED AS REQUIRED.
 - THERE ARE NO EXISTING PRESERVATION EASEMENTS LOCATED ON SITE.
 - ONSITE EXISTING VEGETATION IS NATIVE GRASSES AND WEEDS. THERE IS NO NOTABLE VEGETATION OTHERWISE.
 - THE NATURAL TERTIARY SWALE THROUGH LOTS 16 AND 17 IS PLATTED AS A PUBLIC DRAINAGE EASEMENT WITH A VARIED WIDTH. THE EASEMENT IS TO HAVE TMAX TRM INSTALLED WITH PERMANENT SEEDING. ALL OTHER NATURAL TERTIARY SWALES DO NOT REQUIRE TRM AND ARE NOT TO BE DISTURBED. AREAS REQUIRING ROLLMAX TRM (TMAX OR P300) ARE CALLED OUT ON THE PLANS AND ARE AREAS NEAR POND CONCRETE RUNDOWNS OR ROADSIDE SWALES. SEE THE PERMANENT CHANNEL LINING PROVIDED ON SHEET 2.
 - ALL ROADSIDE DITCHES ARE TO HAVE PERMANENT TRM (ROLLMAX P300 OR EQUIV.) INSTALLED.
 - ALL CULVERTS ARE TO HAVE RIP-RAP INSTALLED AT OUTLET POINTS AS SEEN IN STORM CONSTRUCTION DRAWINGS.

PROJECT INFO:

BASE SURFACE: EXISTING-FULL VOLUME	COMPARISON SURFACE: FILING-4-FG
CUT FACTOR: 1.00	FILL FACTOR: 1.15
CUT VOLUME(ADJUSTED): 84304.81 CUBIC YARDS	FILL VOLUME(ADJUSTED): 90981.93 CUBIC YARDS
NET VOLUME(ADJUSTED): 6677.12(FILL) CUBIC YARDS	
CUT FACTOR: 1.00	FILL FACTOR: 1.00
CUT VOLUME(UNADJUSTED): 84304.81 CUBIC YARDS	FILL VOLUME(UNADJUSTED): 79114.72 CUBIC YARDS
NET VOLUME(UNADJUSTED): 5190.09(CUT) CUBIC YARDS	

LOC - LIMITS OF CONSTRUCTION (ENTIRE FILING PERIMETER CONTROL) = 185.80 AC
 LOD - LIMITS OF DISTURBANCE (ROADWAYS, UTILITIES, GRADING) = 35.33 AC

TABLE 1.1 - CHECK DAM SPACING

SLOPE @ CHANNEL FLOWLINE (%)	MAX SPACING (FEET)
0.5 - 0.75	200
0.75 - 1	150
1 - 1.25	120
1.25 - 1.5	100
1.5 - 1.75	85
1.75 - 2	75

DRAWN BY: AMC JOB DATE: 1/16/2025
 APPROVED: RDL JOB NUMBER: 211030.240
 CAD DATE: 1/16/2025
 CAD FILE: J:\2021\211030\CAD\DWG\C\Filing_No_4\GEC\GEC-Initial-Interim

NO.	DATE	BY	REVISION DESCRIPTION

HRGreen
 HR GREEN - COLORADO SPRINGS
 1975 RESEARCH PARKWAY SUITE 160
 COLORADO SPRINGS, CO 80920
 PHONE: 719.300.4140
 FAX: 719.965.0044

**FLYING HORSE NORTH FILING 4
 PRI #2, LLC.**
 EL PASO COUNTY, CO

GRADING & EROSION CONTROL PLAN
 INITIAL & INTERIM GEC

SHEET GEC 3

DOMBROWSKI, COLIN, 1/16/2025 10:15 AM

MATCHLINE SEE SHEET 4

UNDEVELOPED AREA

UNPLATTED PROPERTY
SCH. NO. 510000080
ZONING: RR-5
~40 AC.

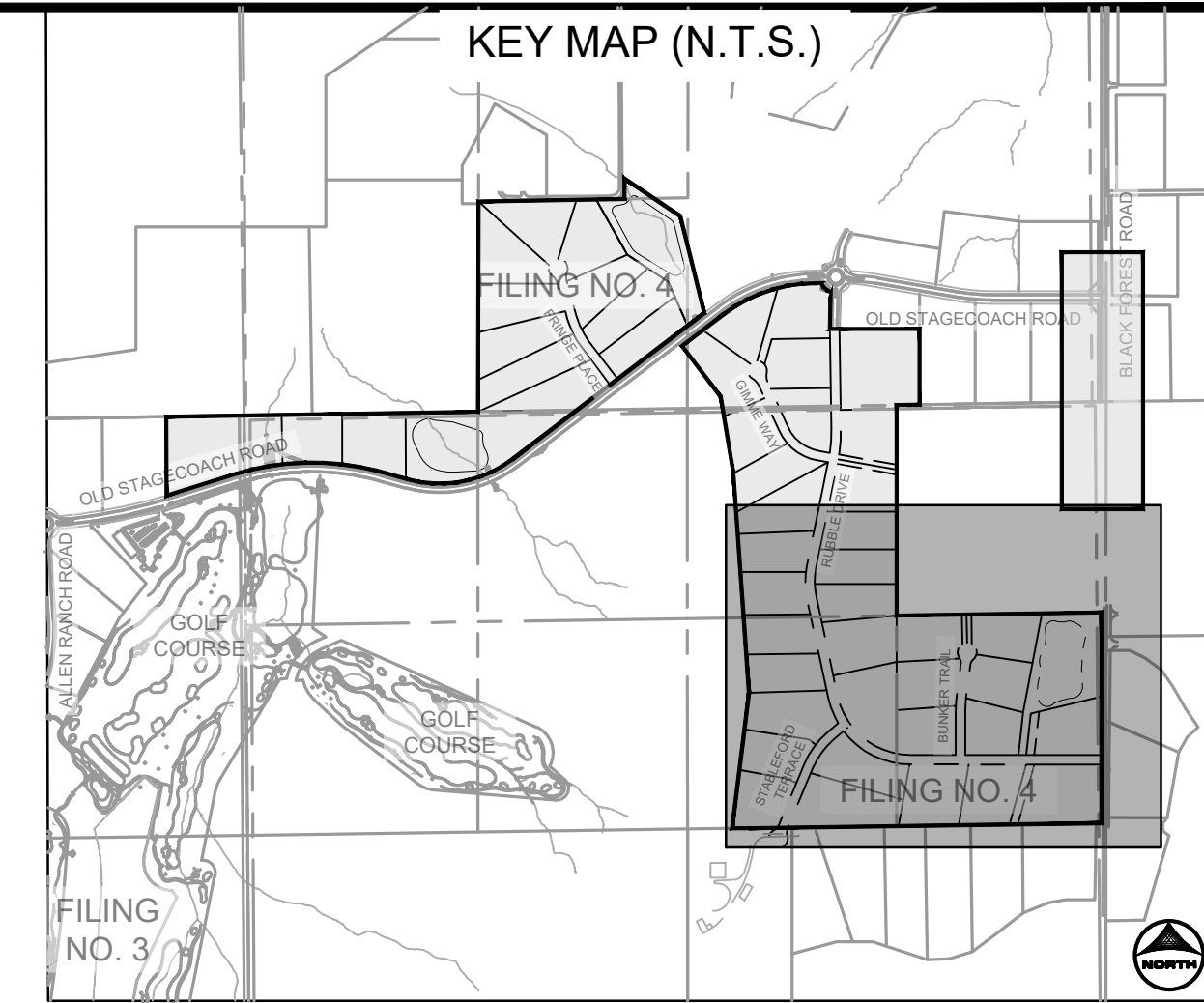
TABLE 1.1 - CHECK DAM SPACING

SLOPE @ CHANNEL FLOWLINE (%)	MAX SPACING (FEET)
0.5 - 0.75	200
0.75 - 1	150
1 - 1.25	120
1.25 - 1.5	100
1.5 - 1.75	85
1.75 - 2	75

TEMPORARY SEDIMENT BASIN A
TO BE GRADED TO FINISHED POND ELEVATIONS
PER CONSTRUCTION DRAWINGS.

SED BASIN A
RISER PIPE INFO:
2 COLUMNS OF ORIFICES,
10 ORIFICES TOTAL: 1 1/4" IN DIA. EA.
ROW 1 ORIFICE EL. 7534.80
ROW 2 ORIFICE EL. 7535.13
ROW 3 ORIFICE EL. 7535.46
ROW 4 ORIFICE EL. 7535.79
ROW 5 ORIFICE EL. 7536.12

TEMPORARY SEDIMENT BASIN
RISER PIPE, 130 LF @ 7.2%
DAYLIGHT AT INV. EL. 7524.00



- GEC LEGEND:**
- SF SILT FENCE
 - SSA STABILIZED STAGING AREA
 - SP STOCKPILE MANAGEMENT
 - IP INLET PROTECTION: IP-1 TO BE USED ON ALL INLETS
 - CIP CULVERT INLET PROTECTION
 - VTC VEHICLE TRACKING CONTROL
 - DS DRAINAGE SWALE
 - LOC LIMITS OF CONSTRUCTION
 - LOC LIMITS OF DISTURBANCE
 - CUT CUT CONDITION
 - FILL FILL CONDITION
 - FD FLOW DIRECTION
 - ECB EROSION CONTROL BLANKET
 - CD CHECK DAM (STRAW BALE)
 - CWA CONCRETE WASH OUT
 - TSB TEMPORARY SEDIMENT BASIN
 - TSB TSB TRIBUTARY AREA DELINEATION
- PHASE:**
- INITIAL/INTERIM
 - INITIAL/INTERIM
 - INITIAL/INTERIM
 - INTERIM
 - INTERIM
 - INITIAL
 - INTERIM
 - INITIAL/INTERIM/FINAL
 - INITIAL/INTERIM/FINAL
 - INITIAL/INTERIM/FINAL
 - INITIAL
 - INITIAL
 - INITIAL
 - INITIAL
 - INITIAL

- GRADING & EROSION CONTROL PLAN NOTES:**
- SEE SHEETS 11-12 FOR EL PASO COUNTY GRADING AND EROSION CONTROL DETAILS.
 - ALL STORMWATER MANAGEMENT MEASURES SHOWN ON THIS PLAN MUST BE INSTALLED AND MAINTAINED PER THE EL PASO COUNTY STORMWATER CONSTRUCTION MANUAL; LATEST REVISIONS.
 - AREA WITHIN LIMITS OF DISTURBANCE TO BE CLEARED, GRUBBED AND STOCKPILED PRIOR TO IMPORT OF ANY FILL.
 - ALL GREATER THAN 4:1 SLOPES MUST RECEIVE SLOPE TRACKING TREATMENT AND EROSION CONTROL BLANKET.
 - STOCKPILES REQUIRED DURING ONSITE CONSTRUCTION ACTIVITIES WILL BE PLACED AT THE DISCRETION OF THE CONTRACTOR. STOCKPILING OF MATERIAL MUST NOT OCCUR OUTSIDE THE LIMITS OF DISTURBANCE SHOWN ON THIS PLAN.
 - NON-STRUCTURAL CONTROLS (I.E. STREET SWEEPING) WILL BE AT THE DISCRETION OF THE PROJECT'S CERTIFIED GEC ADMINISTRATOR THROUGHOUT THE DURATION OF LAND DISTURBING ACTIVITIES.
 - THERE ARE NO ANTICIPATED ASPHALT AND/OR CONCRETE BATCH PLANTS, OR MASONRY MIX STATIONS ASSOCIATED WITH THIS PROJECT. IF THE CONTRACTOR REQUIRES AN ASPHALT/CONCRETE BATCH PLANTS OR MASONRY MIX STATIONS, THESE PLANS WILL BE AMENDED AS REQUIRED.
 - THERE ARE NO EXISTING PRESERVATION EASEMENTS LOCATED ON SITE.
 - ONSITE EXISTING VEGETATION IS NATIVE GRASSES AND WEEDS. THERE IS NO NOTABLE VEGETATION OTHERWISE.
 - THE NATURAL TERTIARY SWALE THROUGH LOTS 16 AND 17 IS PLATTED AS A PUBLIC DRAINAGE EASEMENT WITH A VARIED WIDTH. THE EASEMENT IS TO HAVE TMAX TRM INSTALLED WITH PERMANENT SEEDING. ALL OTHER NATURAL TERTIARY SWALES DO NOT REQUIRE TRM AND ARE NOT TO BE DISTURBED. AREAS REQUIRING ROLLMAX TRM (TMAX OR P300) ARE CALLED OUT ON THE PLANS AND ARE AREAS NEAR POND CONCRETE RUNDOWNS OR ROADSIDE SWALES. SEE THE PERMANENT CHANNEL LINING PROVIDED ON SHEET 2.
 - ALL ROADSIDE DITCHES ARE TO HAVE PERMANENT TRM (ROLLMAX P300 OR EQUIV.) INSTALLED.
 - ALL CULVERTS ARE TO HAVE RIP-RAP INSTALLED AT OUTLET POINTS AS SEEN IN STORM CONSTRUCTION DRAWINGS.

PROJECT INFO:

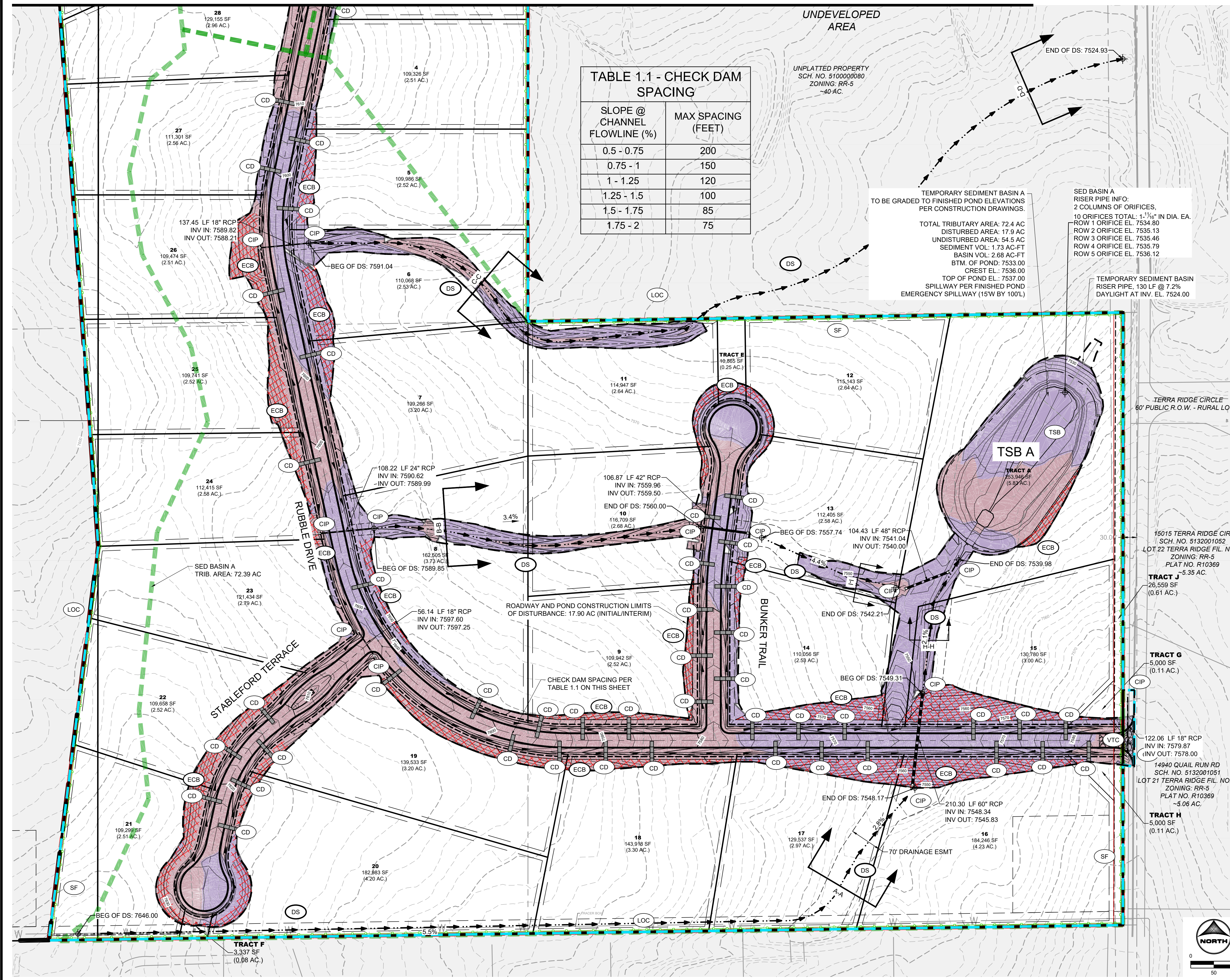
BASE SURFACE: EXISTING-FULL VOLUME. COMPARISON SURFACE: FILING-4-FG

CUT FACTOR: 1.00
FILL FACTOR: 1.15
CUT VOLUME(ADJUSTED): 84304.81 CUBIC YARDS
FILL VOLUME(ADJUSTED): 90981.93 CUBIC YARDS
NET VOLUME(ADJUSTED): 6677.12(FILL) CUBIC YARDS

CUT FACTOR: 1.00
FILL FACTOR: 1.00
CUT VOLUME(UNADJUSTED): 84304.81 CUBIC YARDS
FILL VOLUME(UNADJUSTED): 79114.72 CUBIC YARDS
NET VOLUME(UNADJUSTED): 5190.09(CUT) CUBIC YARDS

LOC - LIMITS OF CONSTRUCTION (ENTIRE FILING PERIMETER CONTROL) = 185.80 AC

LOD - LIMITS OF DISTURBANCE (ROADWAYS, UTILITIES, GRADING) = 35.33 AC



TERRA RIDGE CIRCLE
60' PUBLIC R.O.W. - RURAL LOCAL

15015 TERRA RIDGE CIR
SCH. NO. 5132001052
LOT 22 TERRA RIDGE FIL. NO. 2
ZONING: RR-5
PLAT NO. R10369
-5.35 AC.

TRACT G
26,559 SF
(0.61 AC.)

TRACT H
5,000 SF
(0.11 AC.)

TRACT F
3,337 SF
(0.08 AC.)

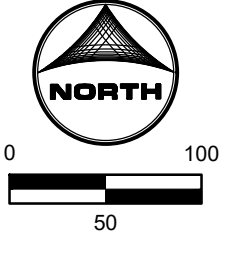
TRACT G
5,000 SF
(0.11 AC.)

TRACT H
5,000 SF
(0.11 AC.)

TRACT F
3,337 SF
(0.08 AC.)

TRACT G
5,000 SF
(0.11 AC.)

TRACT H
5,000 SF
(0.11 AC.)



DRAWN BY: AMC JOB DATE: 1/16/2025 BAR IS ONE INCH ON OFFICIAL DRAWINGS.
APPROVED: RDL JOB NUMBER: 211030.240 0" = 1"
CAD DATE: 1/16/2025 IF NOT ONE INCH, ADJUST SCALE ACCORDINGLY.
CAD FILE: J:\2021\211030\CAD\DWG\C\Filing_No_4\GEC\GEC-Initial-Interim

NO.	DATE	BY	REVISION DESCRIPTION

HRGreen
HR GREEN - COLORADO SPRINGS
1975 RESEARCH PARKWAY SUITE 160
COLORADO SPRINGS, CO 80920
PHONE: 719.300.4140
FAX: 719.965.0044

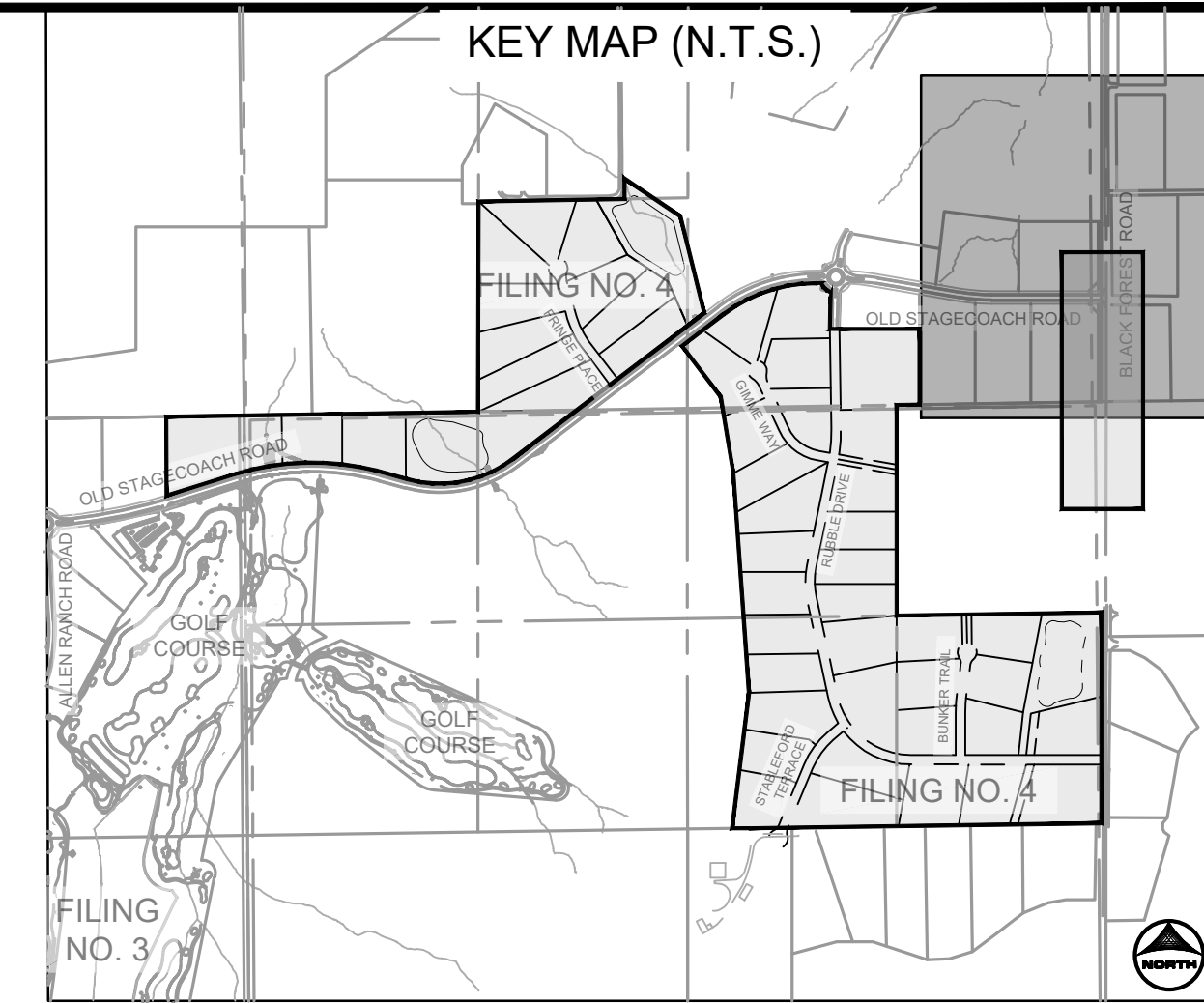
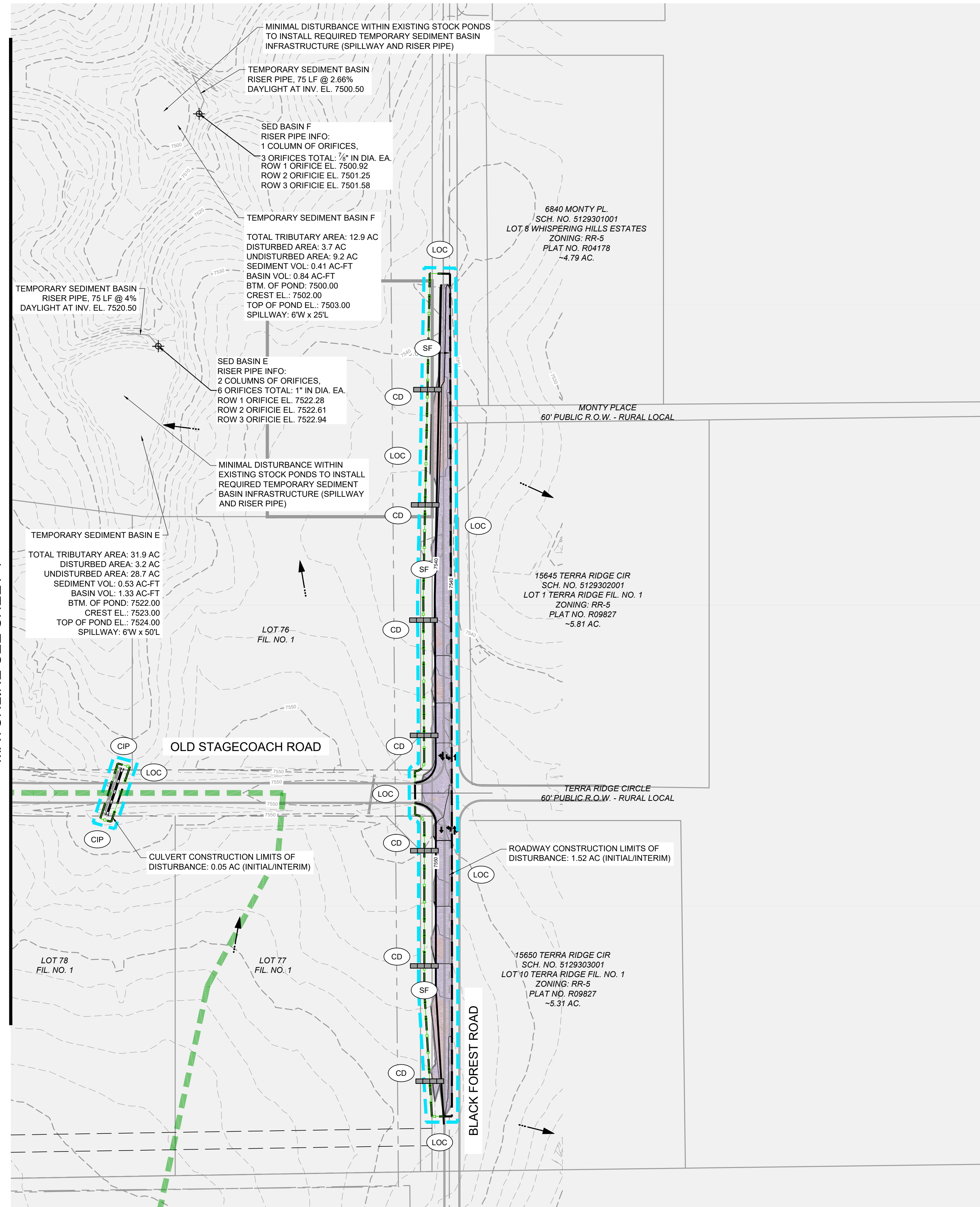
**FLYING HORSE NORTH FILING 4
PRI #2, LLC.**
EL PASO COUNTY, CO

GRADING & EROSION CONTROL PLAN
INITIAL & INTERIM GEC

**SHEET
GEC
5**

PCD FILE NO.: SF2422

MATCHLINE SEE SHEET 4



GEC LEGEND:		PHASE:	
	SF SILT FENCE		INITIAL/INTERIM
	SSA STABILIZED STAGING AREA		INITIAL/INTERIM
	SP STOCKPILE MANAGEMENT		INITIAL/INTERIM
	IP INLET PROTECTION: IP-1 TO BE USED ON ALL INLETS		INTERIM
	CIP CULVERT INLET PROTECTION		INTERIM
	VTC VEHICLE TRACKING CONTROL		INITIAL
	DS DRAINAGE SWALE		INTERIM
	LOC LIMITS OF CONSTRUCTION		INITIAL/INTERIM/FINAL
	LIMITS OF DISTURBANCE		INITIAL/INTERIM/FINAL
	CUT CONDITION		
	FILL CONDITION		
	FLOW DIRECTION		
	ECB EROSION CONTROL BLANKET		INTERIM/FINAL
	CD CHECK DAM (STRAW BALE)		INTERIM
	CWA CONCRETE WASH OUT		INITIAL
	TSB TEMPORARY SEDIMENT BASIN		INITIAL
	TSB TRIBUTARY AREA DELINEATION		INITIAL

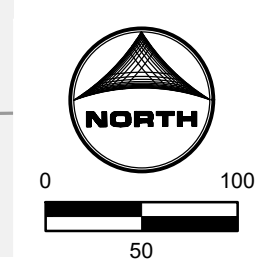
- GRADING & EROSION CONTROL PLAN NOTES:**
- SEE SHEETS 11-12 FOR EL PASO COUNTY GRADING AND EROSION CONTROL DETAILS.
 - ALL STORMWATER MANAGEMENT MEASURES SHOWN ON THIS PLAN MUST BE INSTALLED AND MAINTAINED PER THE EL PASO COUNTY STORMWATER CONSTRUCTION MANUAL; LATEST REVISIONS.
 - AREA WITHIN LIMITS OF DISTURBANCE TO BE CLEARED, GRUBBED AND STOCKPILED PRIOR TO IMPORT OF ANY FILL.
 - ALL GREATER THAN 4:1 SLOPES MUST RECEIVE SLOPE TRACKING TREATMENT AND EROSION CONTROL BLANKET.
 - STOCKPILES REQUIRED DURING ONSITE CONSTRUCTION ACTIVITIES WILL BE PLACED AT THE DISCRETION OF THE CONTRACTOR. STOCKPILING OF MATERIAL MUST NOT OCCUR OUTSIDE THE LIMITS OF DISTURBANCE SHOWN ON THIS PLAN.
 - NON-STRUCTURAL CONTROLS (I.E. STREET SWEEPING) WILL BE AT THE DISCRETION OF THE PROJECT'S CERTIFIED GEC ADMINISTRATOR THROUGHOUT THE DURATION OF LAND DISTURBING ACTIVITIES.
 - THERE ARE NO ANTICIPATED ASPHALT AND/OR CONCRETE BATCH PLANTS, OR MASONRY MIX STATIONS ASSOCIATED WITH THIS PROJECT. IF THE CONTRACTOR REQUIRES A ASPHALT/CONCRETE BATCH PLANTS OR MASONRY MIX STATIONS, THESE PLANS WILL BE AMENDED AS REQUIRED.
 - THERE ARE NO EXISTING PRESERVATION EASEMENTS LOCATED ON SITE.
 - ONSITE EXISTING VEGETATION IS NATIVE GRASSES AND WEEDS. THERE IS NO NOTABLE VEGETATION OTHERWISE.
 - THE NATURAL TERTIARY SWALE THROUGH LOTS 16 AND 17 IS PLATTED AS A PUBLIC DRAINAGE EASEMENT WITH A VARIED WIDTH. THE EASEMENT IS TO HAVE TMAX TRM INSTALLED WITH PERMANENT SEEDING. ALL OTHER NATURAL TERTIARY SWALES DO NOT REQUIRE TRM AND ARE NOT TO BE DISTURBED. AREAS REQUIRING ROLLMAX TRM (TMAX OR P300) ARE CALLED OUT ON THE PLANS AND ARE AREAS NEAR POND CONCRETE RUNDOWNS OR ROADSIDE SWALES. SEE THE PERMANENT CHANNEL LINING PROVIDED ON SHEET 2.
 - ALL ROADSIDE DITCHES ARE TO HAVE PERMANENT TRM (ROLLMAX P300 OR EQUIV.) INSTALLED.
 - ALL CULVERTS ARE TO HAVE RIP-RAP INSTALLED AT OUTLET POINTS AS SEEN IN STORM CONSTRUCTION DRAWINGS.

PROJECT INFO:

VOLUME	
BASE SURFACE: EXISTING-FULL	COMPARISON SURFACE: FILING-4-FG
CUT FACTOR: 1.00	
FILL FACTOR: 1.15	
CUT VOLUME(ADJUSTED): 84304.81 CUBIC YARDS	
FILL VOLUME(ADJUSTED): 90981.93 CUBIC YARDS	
NET VOLUME(ADJUSTED): 6677.12(FILL) CUBIC YARDS	
CUT FACTOR: 1.00	
FILL FACTOR: 1.00	
CUT VOLUME(UNADJUSTED): 84304.81 CUBIC YARDS	
FILL VOLUME(UNADJUSTED): 79114.72 CUBIC YARDS	
NET VOLUME(UNADJUSTED): 5190.09(CUT) CUBIC YARDS	

LOC - LIMITS OF CONSTRUCTION (ENTIRE FILING PERIMETER CONTROL) = 185.80 AC

L0D - LIMITS OF DISTURBANCE (ROADWAYS, UTILITIES, GRADING) = 35.33 AC



DRAWN BY: AMC	JOB DATE: 1/16/2025	BAR IS ONE INCH ON OFFICIAL DRAWINGS.
APPROVED: RDL	JOB NUMBER: 211030.240	0" = 1"
CAD DATE: 1/16/2025		IF NOT ONE INCH, ADJUST SCALE ACCORDINGLY.
CAD FILE: J:\2021\211030\CAD\Drawings\C\Filing_No_4\GEC\GEC-Initial-Interim		

NO.	DATE	BY	REVISION DESCRIPTION

HRGreen HR GREEN - COLORADO SPRINGS
 1975 RESEARCH PARKWAY SUITE 160
 COLORADO SPRINGS, CO 80920
 PHONE: 719.300.4140
 FAX: 713.965.0044

**FLYING HORSE NORTH FILING 4
 PRI #2, LLC.**
 EL PASO COUNTY, CO

**GRADING & EROSION CONTROL PLAN
 INITIAL & INTERIM GEC**

**SHEET
 GEC
 6**



GEC LEGEND:		PHASE:
	(TRM) TURF REINFORCED MAT	FINAL
	(SM) SEEDING & MULCHING	FINAL
	(DS) DRAINAGE SWALE	
	(LOD) LIMITS OF CONSTRUCTION/DISTURBANCE	
	FLOW DIRECTION	
	(ECB) EROSION CONTROL BLANKET	INTERIM/FINAL

GRADING & EROSION CONTROL PLAN NOTES:

- SEE SHEETS 11-12 FOR EL PASO COUNTY GRADING AND EROSION CONTROL DETAILS.
- ALL STORMWATER MANAGEMENT MEASURES SHOWN ON THIS PLAN MUST BE INSTALLED AND MAINTAINED PER THE EL PASO COUNTY STORMWATER CONSTRUCTION MANUAL, LATEST REVISIONS.
- AREA WITHIN LIMITS OF DISTURBANCE TO BE CLEARED, GRUBBED AND STOCKPILED PRIOR TO IMPORT OF ANY FILL.
- ALL GREATER THAN 4:1 SLOPES MUST RECEIVE SLOPE TRACKING TREATMENT AND EROSION CONTROL BLANKET.
- STOCKPILES REQUIRED DURING ONSITE CONSTRUCTION ACTIVITIES WILL BE PLACED AT THE DISCRETION OF THE CONTRACTOR. STOCKPILING OF MATERIAL MUST NOT OCCUR OUTSIDE THE LIMITS OF DISTURBANCE SHOWN ON THIS PLAN.
- NON-STRUCTURAL CONTROLS (I.E. STREET SWEEPING) WILL BE AT THE DISCRETION OF THE PROJECT'S CERTIFIED GEC ADMINISTRATOR THROUGHOUT THE DURATION OF LAND DISTURBING ACTIVITIES.
- THERE ARE NO ANTICIPATED ASPHALT AND/OR CONCRETE BATCH PLANTS, OR MASONRY MIX STATIONS ASSOCIATED WITH THIS PROJECT. IF THE CONTRACTOR REQUIRES AN ASPHALT/CONCRETE BATCH PLANTS OR MASONRY MIX STATIONS, THESE PLANS WILL BE AMENDED AS REQUIRED.
- THERE ARE NO EXISTING PRESERVATION EASEMENTS LOCATED ON SITE.
- ONSITE EXISTING VEGETATION IS NATIVE GRASSES AND WEEDS. THERE IS NO NOTABLE VEGETATION OTHERWISE.
- THE NATURAL TERTIARY SWALE THROUGH LOTS 16 AND 17 IS PLATTED AS A PUBLIC DRAINAGE EASEMENT WITH A VARIED WIDTH. THE EASEMENT IS TO HAVE TMAX TRM INSTALLED WITH PERMANENT SEEDING. ALL OTHER NATURAL TERTIARY SWALES DO NOT REQUIRE TRM AND ARE NOT TO BE DISTURBED. AREAS REQUIRING ROLLMAX TRM (TMAX OR P300) ARE CALLED OUT ON THE PLANS AND ARE AREAS NEAR POND CONCRETE RUNDOWNS OR ROADSIDE SWALES. SEE THE PERMANENT CHANNEL LINING PROVIDED ON SHEET 2.
- ALL ROADSIDE DITCHES ARE TO HAVE PERMANENT TRM (ROLLMAX P300 OR EQUIV.) INSTALLED.
- ALL CULVERTS ARE TO HAVE RIP-RAP INSTALLED AT OUTLET POINTS AS SEEN IN STORM CONSTRUCTION DRAWINGS.

PROJECT INFO:

VOLUME:
 BASE SURFACE: EXISTING-FULL COMPARISON SURFACE: FILING-4-FG

CUT FACTOR: 1.00
 FILL FACTOR: 1.15
 CUT VOLUME(ADJUSTED): 84304.81 CUBIC YARDS
 FILL VOLUME(ADJUSTED): 90981.93 CUBIC YARDS
 NET VOLUME(ADJUSTED): 6677.12(FILL) CUBIC YARDS

CUT FACTOR: 1.00
 FILL FACTOR: 1.00
 CUT VOLUME(UNADJUSTED): 84304.81 CUBIC YARDS
 FILL VOLUME(UNADJUSTED): 79114.72 CUBIC YARDS
 NET VOLUME(UNADJUSTED): 5190.09(CUT) CUBIC YARDS

LOC - LIMITS OF CONSTRUCTION (ENTIRE FILING PERMETER CONTROL) = 185.80 AC
 LOD - LIMITS OF DISTURBANCE (ROADWAYS, UTILITIES, GRADING) = 35.33 AC

MATCHLINE SEE SHEET 8

DRAWN BY: AMC	JOB DATE: 1/14/2025	BAR IS ONE INCH ON OFFICIAL DRAWINGS.
APPROVED: RDL	JOB NUMBER: 211030.240	0" = 1"
CAD DATE: 1/16/2025		IF NOT ONE INCH, ADJUST SCALE ACCORDINGLY.
CAD FILE: J:\2021\211030\CAD\DWG\C\Filing_No_4\GEC\GEC-Final		

NO.	DATE	BY	REVISION DESCRIPTION

HRGreen
 HR GREEN - COLORADO SPRINGS
 1975 RESEARCH PARKWAY SUITE 160
 COLORADO SPRINGS, CO 80920
 PHONE: 719.300.4140
 FAX: 713.965.0044

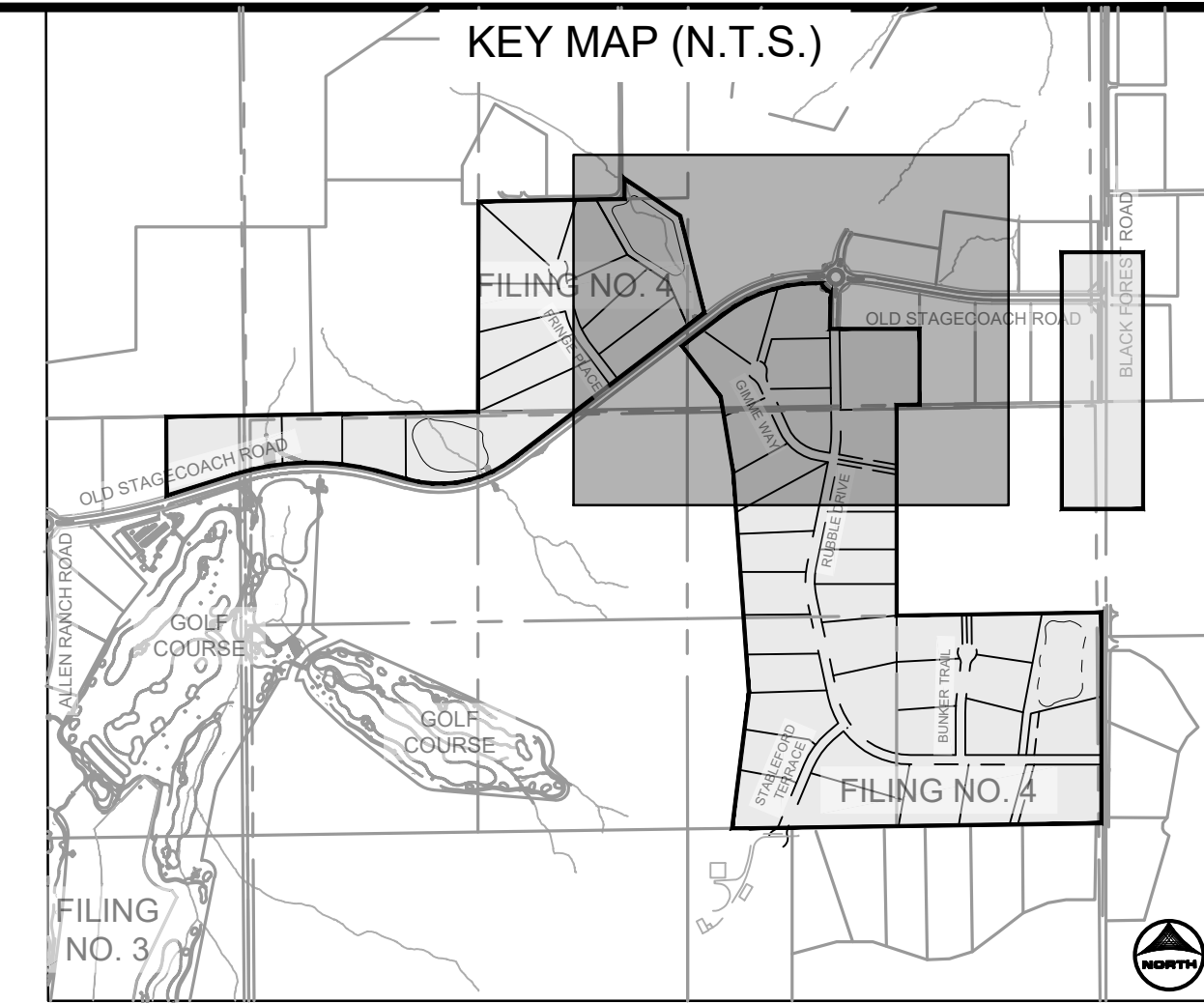
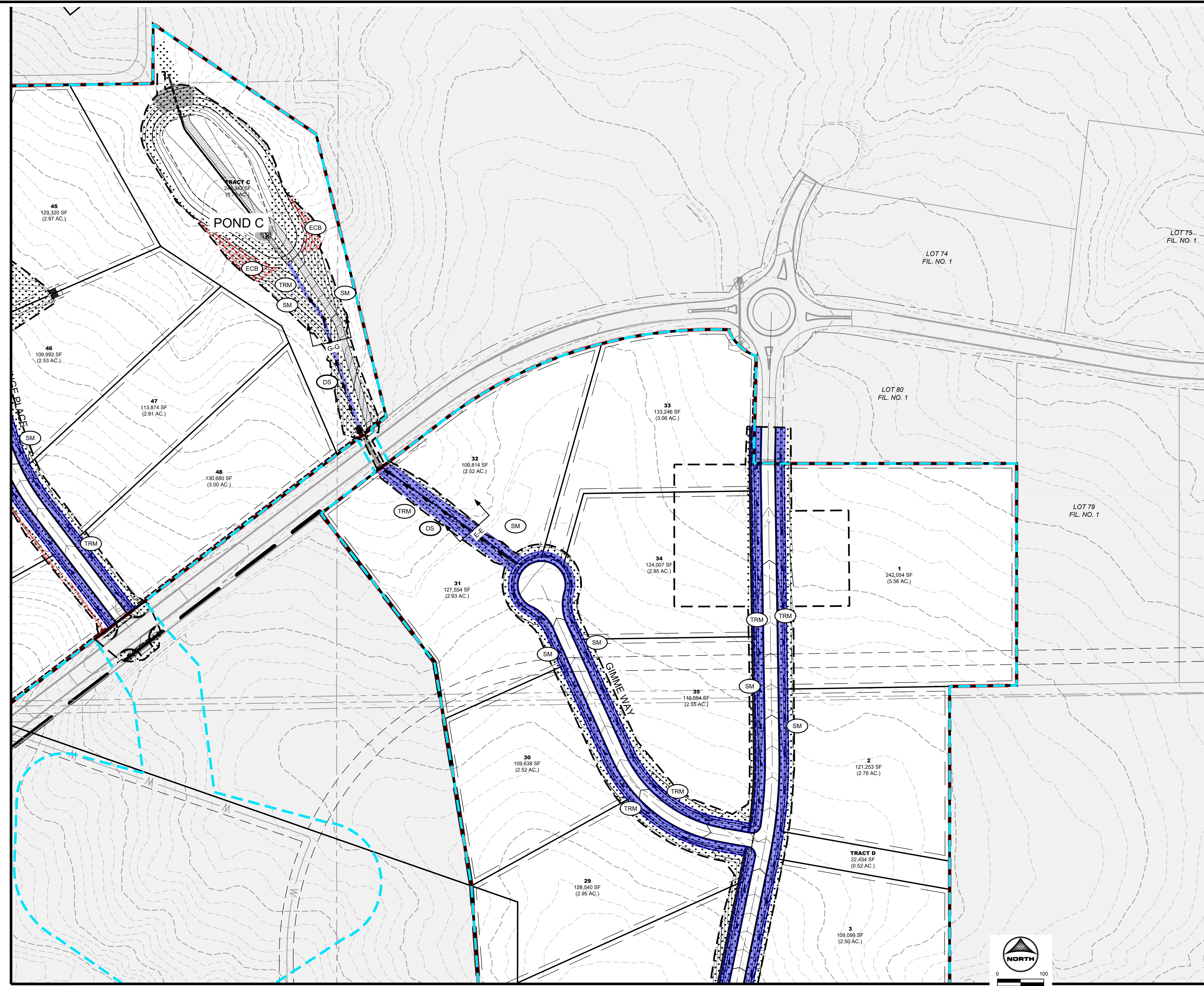
**FLYING HORSE NORTH FILING 4
 PRI #2, LLC.
 EL PASO COUNTY, CO**

**GRADING & EROSION CONTROL PLAN
 FINAL GEC**

**SHEET
 GEC
 7**

DOMBROWSKI, COLIN, 1/16/2025 10:18 AM

HR GREEN Xref: xc-dgn-1030, xc-cw-1030, xc-ult-1030, xc-dgn-240, xc-cw-240, key_map, gce_legend, gce_plan_notes, EFC, xc-gsnc-030



GEC LEGEND:		PHASE:	
	TRM	TURF REINFORCED MAT	FINAL
	SM	SEEDING & MULCHING	FINAL
	DS	DRAINAGE SWALE	
	LOD	LIMITS OF CONSTRUCTION/DISTURBANCE	
		FLOW DIRECTION	
	ECB	EROSION CONTROL BLANKET	INTERIM/FINAL

GRADING & EROSION CONTROL PLAN NOTES:

- SEE SHEETS 11-12 FOR EL PASO COUNTY GRADING AND EROSION CONTROL DETAILS.
- ALL STORMWATER MANAGEMENT MEASURES SHOWN ON THIS PLAN MUST BE INSTALLED AND MAINTAINED PER THE EL PASO COUNTY STORMWATER CONSTRUCTION MANUAL, LATEST REVISIONS.
- AREA WITHIN LIMITS OF DISTURBANCE TO BE CLEARED, GRUBBED AND STOCKPILED PRIOR TO IMPORT OF ANY FILL.
- ALL GREATER THAN 4:1 SLOPES MUST RECEIVE SLOPE TRACKING TREATMENT AND EROSION CONTROL BLANKET.
- STOCKPILES REQUIRED DURING ONSITE CONSTRUCTION ACTIVITIES WILL BE PLACED AT THE DISCRETION OF THE CONTRACTOR; STOCKPILING OF MATERIAL MUST NOT OCCUR OUTSIDE THE LIMITS OF DISTURBANCE SHOWN ON THIS PLAN.
- NON-STRUCTURAL CONTROLS (I.E. STREET SWEEPING) WILL BE AT THE DISCRETION OF THE PROJECT'S CERTIFIED GEC ADMINISTRATOR THROUGHOUT THE DURATION OF LAND DISTURBING ACTIVITIES.
- THERE ARE NO ANTICIPATED ASPHALT AND/OR CONCRETE BATCH PLANTS, OR MASONRY MIX STATIONS ASSOCIATED WITH THIS PROJECT. IF THE CONTRACTOR REQUIRES AN ASPHALT/CONCRETE BATCH PLANTS OR MASONRY MIX STATIONS, THESE PLANS WILL BE AMENDED AS REQUIRED.
- THERE ARE NO EXISTING PRESERVATION EASEMENTS LOCATED ON SITE.
- ONSITE EXISTING VEGETATION IS NATIVE GRASSES AND WEEDS. THERE IS NO NOTABLE VEGETATION OTHERWISE.
- THE NATURAL TERTIARY SWALE THROUGH LOTS 16 AND 17 IS PLATTED AS A PUBLIC DRAINAGE EASEMENT WITH A VARIED WIDTH. THE EASEMENT IS TO HAVE TMAX TRM INSTALLED WITH PERMANENT SEEDING. ALL OTHER NATURAL TERTIARY SWALES DO NOT REQUIRE TRM AND ARE NOT TO BE DISTURBED. AREAS REQUIRING ROLLMAX TRM (TMAX OR P300) ARE CALLED OUT ON THE PLANS AND ARE AREAS NEAR POND CONCRETE RUNDOWNS OR ROADSIDE SWALES. SEE THE PERMANENT CHANNEL LINING PROVIDED ON SHEET 2.
- ALL ROADSIDE DITCHES ARE TO HAVE PERMANENT TRM (ROLLMAX P300 OR EQUIV.) INSTALLED.
- ALL CULVERTS ARE TO HAVE RIP-RAP INSTALLED AT OUTLET POINTS AS SEEN IN STORM CONSTRUCTION DRAWINGS.

PROJECT INFO:

VOLUME:
 BASE SURFACE: EXISTING-FULL COMPARISON SURFACE: FILING-4-FG

CUT FACTOR: 1.00
 FILL FACTOR: 1.15
 CUT VOLUME(ADJUSTED): 84304.81 CUBIC YARDS
 FILL VOLUME(ADJUSTED): 90981.93 CUBIC YARDS
 NET VOLUME(ADJUSTED): 6677.12(FILL) CUBIC YARDS

CUT FACTOR: 1.00
 FILL FACTOR: 1.00
 CUT VOLUME(UNADJUSTED): 84304.81 CUBIC YARDS
 FILL VOLUME(UNADJUSTED): 79114.72 CUBIC YARDS
 NET VOLUME(UNADJUSTED): 5190.09(CUT) CUBIC YARDS

LOC - LIMITS OF CONSTRUCTION (ENTIRE FILING PERMETER CONTROL) = 185.80 AC
 LOD - LIMITS OF DISTURBANCE (ROADWAYS, UTILITIES, GRADING) = 35.33 AC

MATCHLINE SEE SHEET 10

MATCHLINE SEE SHEET 9

DRAWN BY: AMC	JOB DATE: 1/14/2025	BAR IS ONE INCH ON OFFICIAL DRAWINGS.
APPROVED: RDL	JOB NUMBER: 211030.240	0" = 1"
CAD DATE: 1/16/2025		IF NOT ONE INCH, ADJUST SCALE ACCORDINGLY.
CAD FILE: J:\2021\211030\CAD\DWG\C\Filing_No_4\GEC\GEC-Final		

NO.	DATE	BY	REVISION DESCRIPTION

HRGreen
 HR GREEN - COLORADO SPRINGS
 1975 RESEARCH PARKWAY SUITE 160
 COLORADO SPRINGS, CO 80920
 PHONE: 719.300.4140
 FAX: 719.965.0044

**FLYING HORSE NORTH FILING 4
 PRI #2, LLC.
 EL PASO COUNTY, CO**

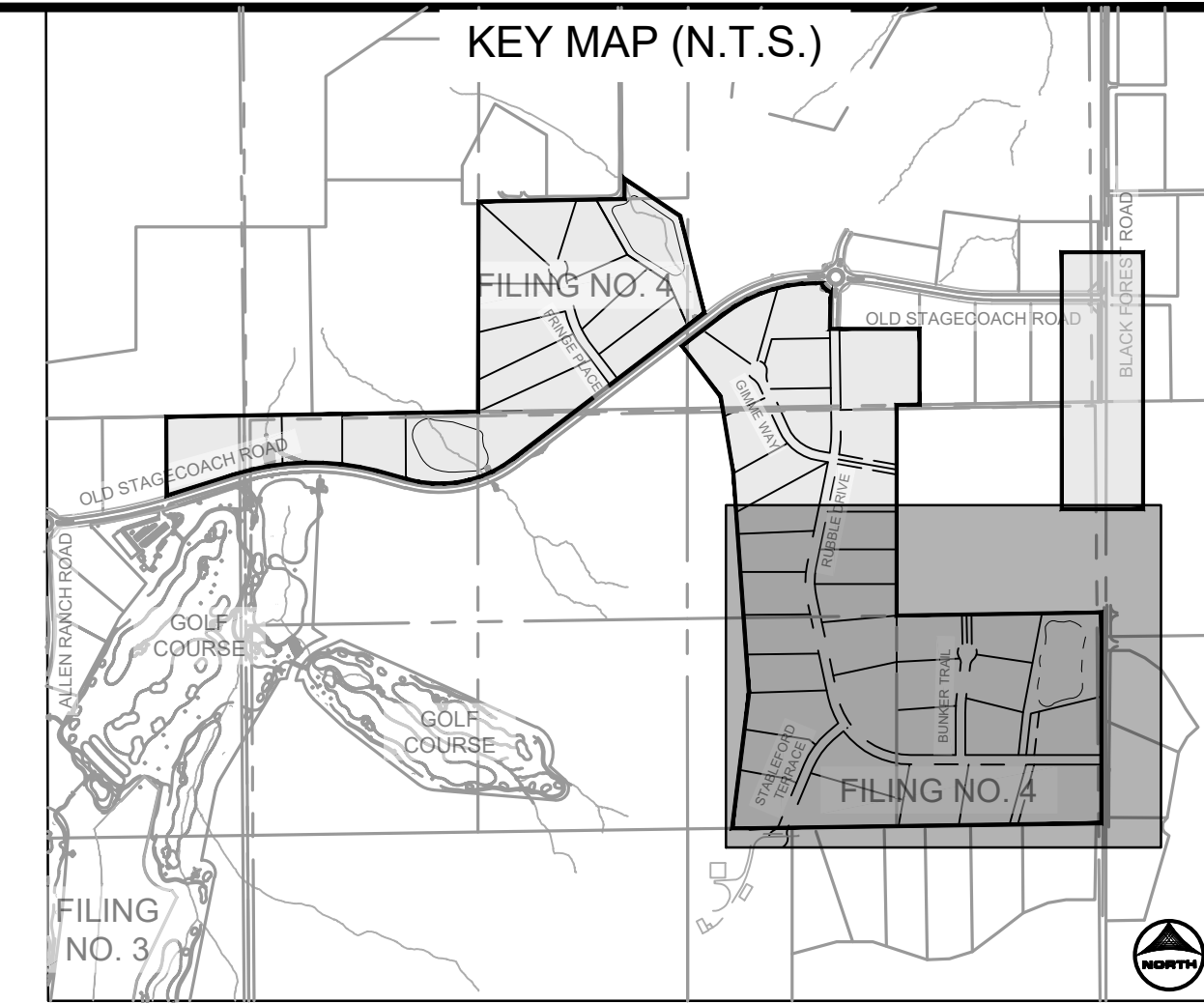
**GRADING & EROSION CONTROL PLAN
 FINAL GEC**

**SHEET
 GEC
 8**

PCD FILE NO.: SF2422

UNDEVELOPED AREA

UNPLATTED PROPERTY
SCH. NO. 510000080
ZONING: RR-5
~40 AC.



GEC LEGEND:		PHASE:
	(TRM) TURF REINFORCED MAT	FINAL
	(SM) SEEDING & MULCHING	FINAL
	(DS) DRAINAGE SWALE	
	(LOD) LIMITS OF CONSTRUCTION/DISTURBANCE	
	FLOW DIRECTION	
	(ECB) EROSION CONTROL BLANKET	INTERIM/FINAL

GRADING & EROSION CONTROL PLAN NOTES:

- SEE SHEETS 11-12 FOR EL PASO COUNTY GRADING AND EROSION CONTROL DETAILS.
- ALL STORMWATER MANAGEMENT MEASURES SHOWN ON THIS PLAN MUST BE INSTALLED AND MAINTAINED PER THE EL PASO COUNTY STORMWATER CONSTRUCTION MANUAL, LATEST REVISIONS.
- AREA WITHIN LIMITS OF DISTURBANCE TO BE CLEARED, GRUBBED AND STOCKPILED PRIOR TO IMPORT OF ANY FILL.
- ALL GREATER THAN 4:1 SLOPES MUST RECEIVE SLOPE TRACKING TREATMENT AND EROSION CONTROL BLANKET.
- STOCKPILES REQUIRED DURING ONSITE CONSTRUCTION ACTIVITIES WILL BE PLACED AT THE DISCRETION OF THE CONTRACTOR. STOCKPILING OF MATERIAL MUST NOT OCCUR OUTSIDE THE LIMITS OF DISTURBANCE SHOWN ON THIS PLAN.
- NON-STRUCTURAL CONTROLS (I.E. STREET SWEEPING) WILL BE AT THE DISCRETION OF THE PROJECT'S CERTIFIED GEC ADMINISTRATOR THROUGHOUT THE DURATION OF LAND DISTURBING ACTIVITIES.
- THERE ARE NO ANTICIPATED ASPHALT AND/OR CONCRETE BATCH PLANTS, OR MASONRY MIX STATIONS ASSOCIATED WITH THIS PROJECT. IF THE CONTRACTOR REQUIRES AN ASPHALT/CONCRETE BATCH PLANTS OR MASONRY MIX STATIONS, THESE PLANS WILL BE AMENDED AS REQUIRED.
- THERE ARE NO EXISTING PRESERVATION EASEMENTS LOCATED ON SITE.
- ON-SITE EXISTING VEGETATION IS NATIVE GRASSES AND WEEDS. THERE IS NO NOTABLE VEGETATION OTHERWISE.
- THE NATURAL TERTIARY SWALE THROUGH LOTS 16 AND 17 IS PLATTED AS A PUBLIC DRAINAGE EASEMENT WITH A VARIED WIDTH. THE EASEMENT IS TO HAVE TMAX TRM INSTALLED WITH PERMANENT SEEDING. ALL OTHER NATURAL TERTIARY SWALES DO NOT REQUIRE TRM AND ARE NOT TO BE DISTURBED. AREAS REQUIRING ROLLMAX TRM (TMAX OR P300) ARE CALLED OUT ON THE PLANS AND ARE AREAS NEAR POND CONCRETE RUNDOWNS OR ROADSIDE SWALES. SEE THE PERMANENT CHANNEL LINING PROVIDED ON SHEET 2.
- ALL ROADSIDE DITCHES ARE TO HAVE PERMANENT TRM (ROLLMAX P300 OR EQUIV.) INSTALLED.
- ALL CULVERTS ARE TO HAVE RIP-RAP INSTALLED AT OUTLET POINTS AS SEEN IN STORM CONSTRUCTION DRAWINGS.

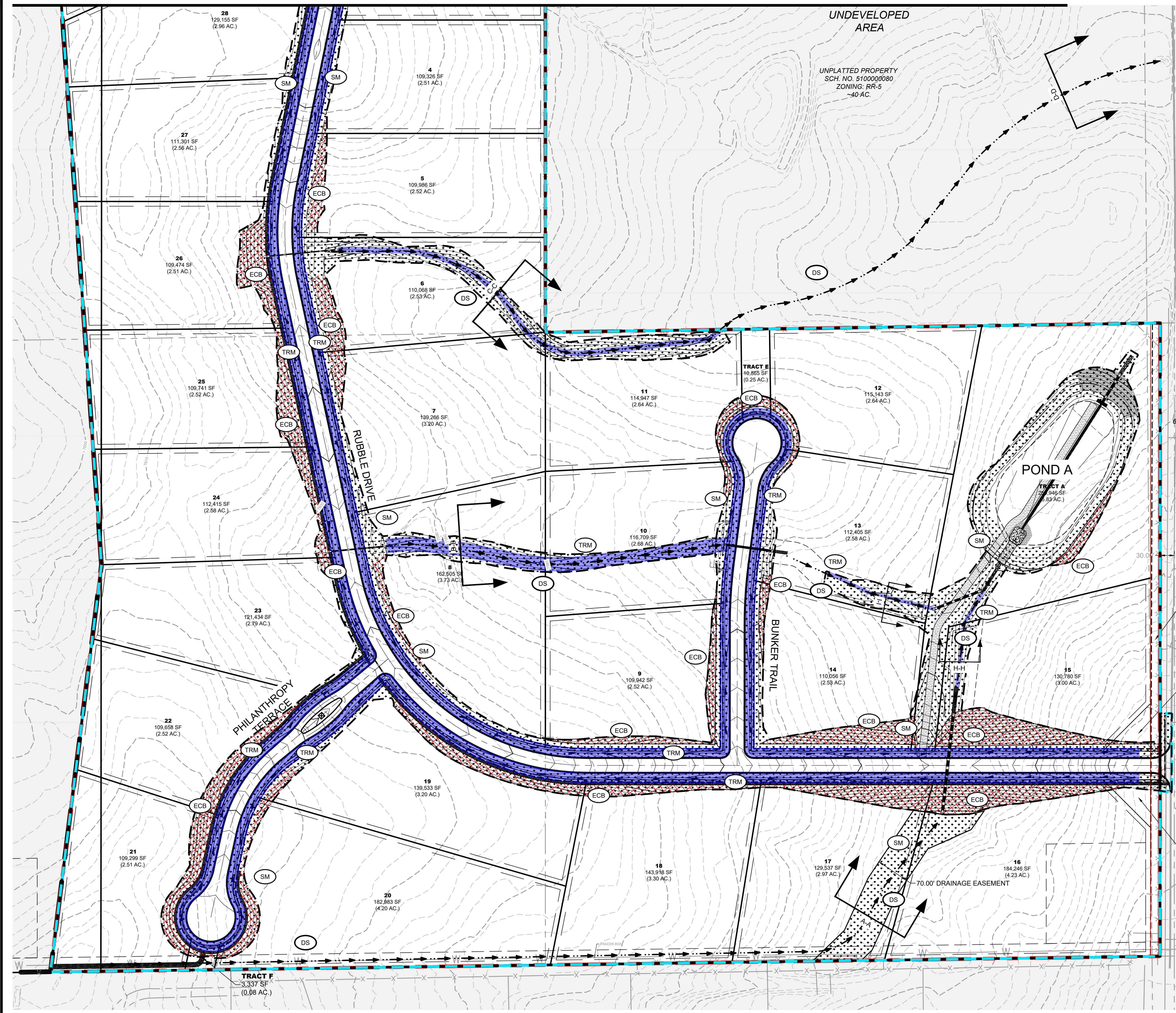
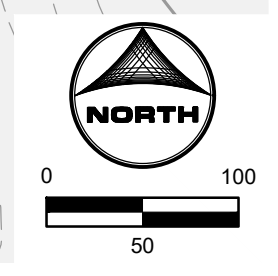
PROJECT INFO:

VOLUME:
 BASE SURFACE: EXISTING-FULL COMPARISON SURFACE: FILING-4-FG

CUT FACTOR: 1.00
 FILL FACTOR: 1.15
 CUT VOLUME(ADJUSTED): 84304.81 CUBIC YARDS
 FILL VOLUME(ADJUSTED): 90981.93 CUBIC YARDS
 NET VOLUME(ADJUSTED): 6677.12(FILL) CUBIC YARDS

CUT FACTOR: 1.00
 FILL FACTOR: 1.00
 CUT VOLUME(UNADJUSTED): 84304.81 CUBIC YARDS
 FILL VOLUME(UNADJUSTED): 79114.72 CUBIC YARDS
 NET VOLUME(UNADJUSTED): 5190.09(CUT) CUBIC YARDS

LOC - LIMITS OF CONSTRUCTION (ENTIRE FILING PERMETER CONTROL) = 185.80 AC
 LOD - LIMITS OF DISTURBANCE (ROADWAYS, UTILITIES, GRADING) = 35.33 AC



TERRA RIDGE CIRCLE
60' PUBLIC R.O.W. - RURAL LOCAL

15015 TERRA RIDGE CIR
SCH. NO. 5132001052
LOT 22 TERRA RIDGE FIL. NO. 2
ZONING: RR-5
PLAT NO. R10369
~5.35 AC.

TRACT J
26,559 SF
(0.61 AC.)

TRACT G
5,000 SF
(0.11 AC.)

14940 QUAIL RUN RD
SCH. NO. 5132001051
LOT 21 TERRA RIDGE FIL. NO. 2
ZONING: RR-5
PLAT NO. R10369
~5.06 AC.

TRACT H
5,000 SF
(0.11 AC.)

DRAWN BY: AMC JOB DATE: 1/14/2025
 APPROVED: RDL JOB NUMBER: 211030.240
 CAD DATE: 1/16/2025
 CAD FILE: J:\2021\211030\CAD\DWG\C\Filing_No_4\GEC\GEC-Final

NO.	DATE	BY	REVISION DESCRIPTION

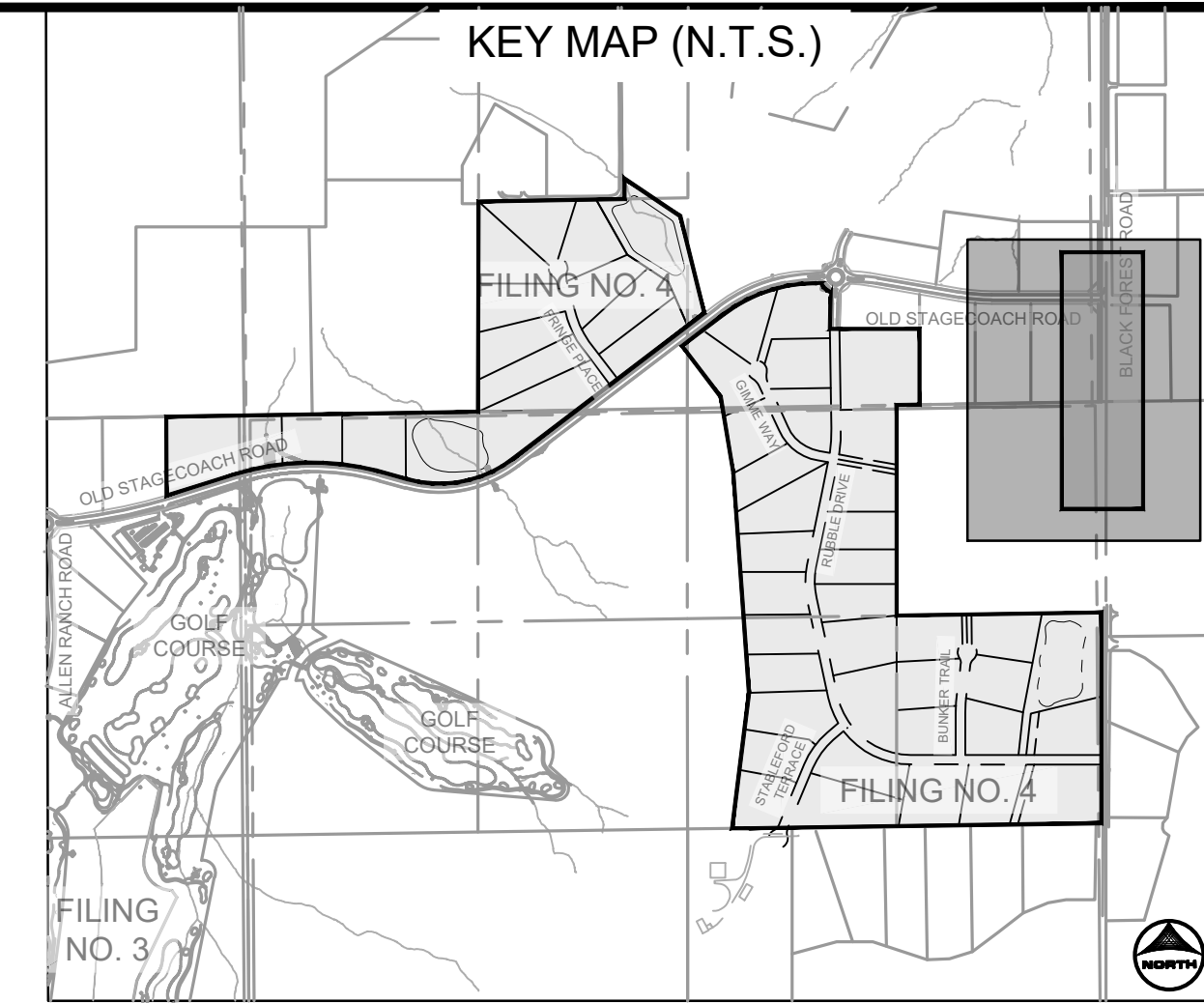
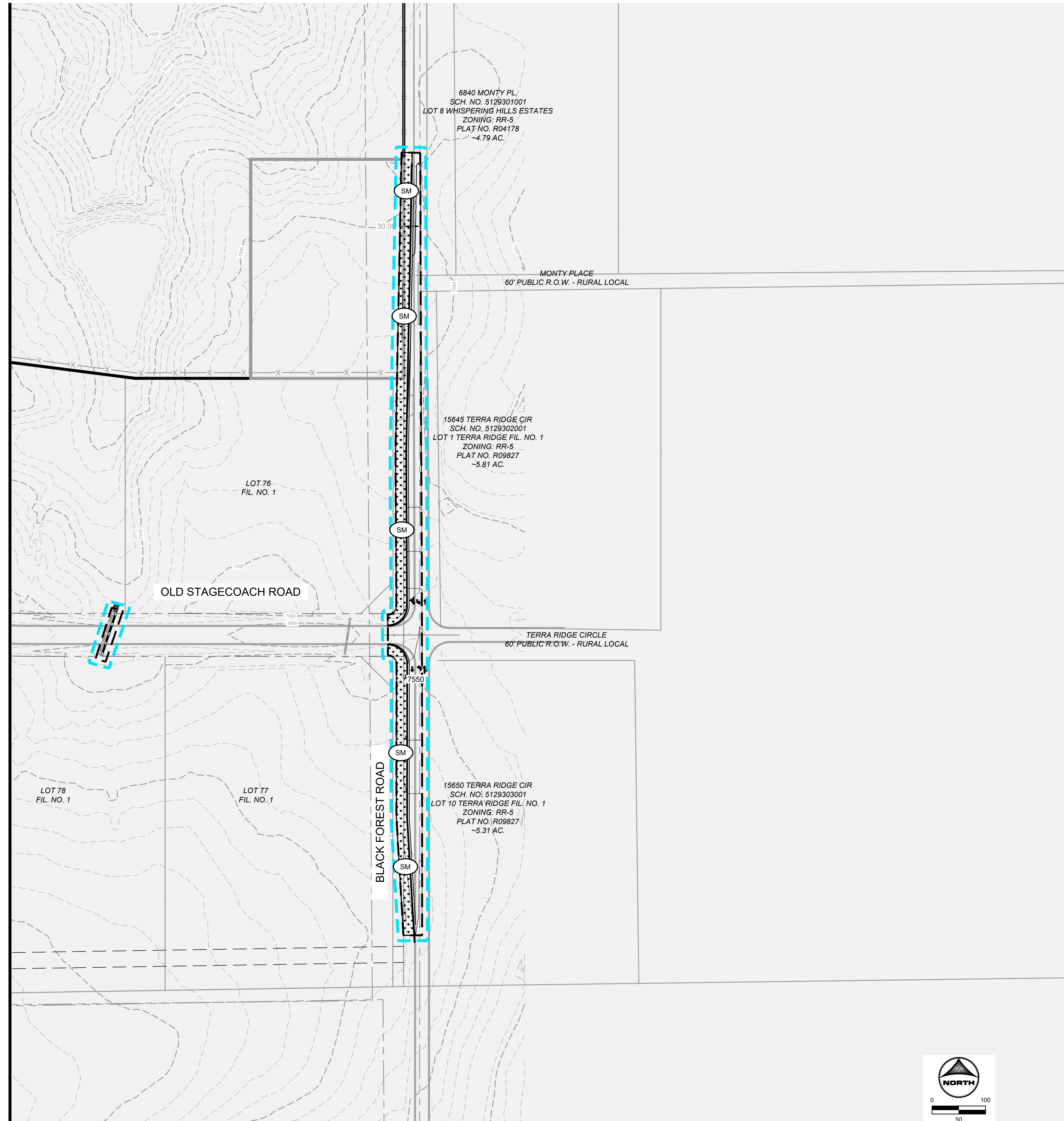
HRGreen
 HR GREEN - COLORADO SPRINGS
 1975 RESEARCH PARKWAY SUITE 160
 COLORADO SPRINGS, CO 80920
 PHONE: 719.300.4140
 FAX: 713.965.0044

**FLYING HORSE NORTH FILING 4
 PRI #2, LLC.**
 EL PASO COUNTY, CO

GRADING & EROSION CONTROL PLAN
 FINAL GEC

**SHEET
 GEC
 9**

MATCHLINE SEE SHEET 8



GEC LEGEND:		PHASE:	
	(TRM)	TURF REINFORCED MAT	FINAL
	(SM)	SEEDING & MULCHING	FINAL
	(DS)	DRAINAGE SWALE	
	(LOD)	LIMITS OF CONSTRUCTION/DISTURBANCE	
		FLOW DIRECTION	
	(ECB)	EROSION CONTROL BLANKET	INTERIM/FINAL

GRADING & EROSION CONTROL PLAN NOTES:

- SEE SHEETS 11-12 FOR EL PASO COUNTY GRADING AND EROSION CONTROL DETAILS.
- ALL STORMWATER MANAGEMENT MEASURES SHOWN ON THIS PLAN MUST BE INSTALLED AND MAINTAINED PER THE EL PASO COUNTY STORMWATER CONSTRUCTION MANUAL, LATEST REVISIONS.
- AREA WITHIN LIMITS OF DISTURBANCE TO BE CLEARED, GRUBBED AND STOCKPILED PRIOR TO IMPORT OF ANY FILL.
- ALL GREATER THAN 4:1 SLOPES MUST RECEIVE SLOPE TRACKING TREATMENT AND EROSION CONTROL BLANKET.
- STOCKPILES REQUIRED DURING ONSITE CONSTRUCTION ACTIVITIES WILL BE PLACED AT THE DISCRETION OF THE CONTRACTOR. STOCKPILING OF MATERIAL MUST NOT OCCUR OUTSIDE THE LIMITS OF DISTURBANCE SHOWN ON THIS PLAN.
- NON-STRUCTURAL CONTROLS (I.E. STREET SWEEPING) WILL BE AT THE DISCRETION OF THE PROJECT'S CERTIFIED GEC ADMINISTRATOR THROUGHOUT THE DURATION OF LAND DISTURBING ACTIVITIES.
- THERE ARE NO ANTICIPATED ASPHALT AND/OR CONCRETE BATCH PLANTS, OR MASONRY MIX STATIONS ASSOCIATED WITH THIS PROJECT. IF THE CONTRACTOR REQUIRES A ASPHALT/CONCRETE BATCH PLANTS OR MASONRY MIX STATIONS, THESE PLANS WILL BE AMENDED AS REQUIRED.
- THERE ARE NO EXISTING PRESERVATION EASEMENTS LOCATED ON SITE.
- ONSITE EXISTING VEGETATION IS NATIVE GRASSES AND WEEDS. THERE IS NO NOTABLE VEGETATION OTHERWISE.
- THE NATURAL TERTIARY SWALE THROUGH LOTS 16 AND 17 IS PLATTED AS A PUBLIC DRAINAGE EASEMENT WITH A VARIED WIDTH. THE EASEMENT IS TO HAVE TMAX TRM INSTALLED WITH PERMANENT SEEDING. ALL OTHER NATURAL TERTIARY SWALES DO NOT REQUIRE TRM AND ARE NOT TO BE DISTURBED. AREAS REQUIRING ROLLMAX TRM (TMAX OR P300) ARE CALLED OUT ON THE PLANS AND ARE AREAS NEAR POND CONCRETE RUNDOWNS OR ROADSIDE SWALES. SEE THE PERMANENT CHANNEL LINING PROVIDED ON SHEET 2.
- ALL ROADSIDE DITCHES ARE TO HAVE PERMANENT TRM (ROLLMAX P300 OR EQUIV.) INSTALLED.
- ALL CULVERTS ARE TO HAVE RIP-RAP INSTALLED AT OUTLET POINTS AS SEEN IN STORM CONSTRUCTION DRAWINGS.

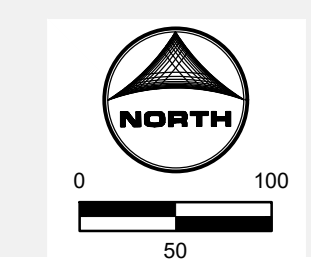
PROJECT INFO:

VOLUME:
 BASE SURFACE: EXISTING-FULL COMPARISON SURFACE: FILING-4-FG

CUT FACTOR: 1.00
 FILL FACTOR: 1.15
 CUT VOLUME(ADJUSTED): 84304.81 CUBIC YARDS
 FILL VOLUME(ADJUSTED): 90981.93 CUBIC YARDS
 NET VOLUME(ADJUSTED): 6677.12(FILL) CUBIC YARDS

CUT FACTOR: 1.00
 FILL FACTOR: 1.00
 CUT VOLUME(UNADJUSTED): 84304.81 CUBIC YARDS
 FILL VOLUME(UNADJUSTED): 79114.72 CUBIC YARDS
 NET VOLUME(UNADJUSTED): 5190.09(CUT) CUBIC YARDS

LOC - LIMITS OF CONSTRUCTION (ENTIRE FILING PERMETER CONTROL) = 185.80 AC
 LOD - LIMITS OF DISTURBANCE (ROADWAYS, UTILITIES, GRADING) = 35.33 AC



DRAWN BY: AMC	JOB DATE: 1/14/2025	BAR IS ONE INCH ON OFFICIAL DRAWINGS.
APPROVED: RDL	JOB NUMBER: 211030.240	0" = 1"
CAD DATE: 1/16/2025		IF NOT ONE INCH, ADJUST SCALE ACCORDINGLY.
CAD FILE: J:\2021\211030\CAD\DWG\C\Filing_No_4\GEC\GEC-Final		

NO.	DATE	BY	REVISION DESCRIPTION

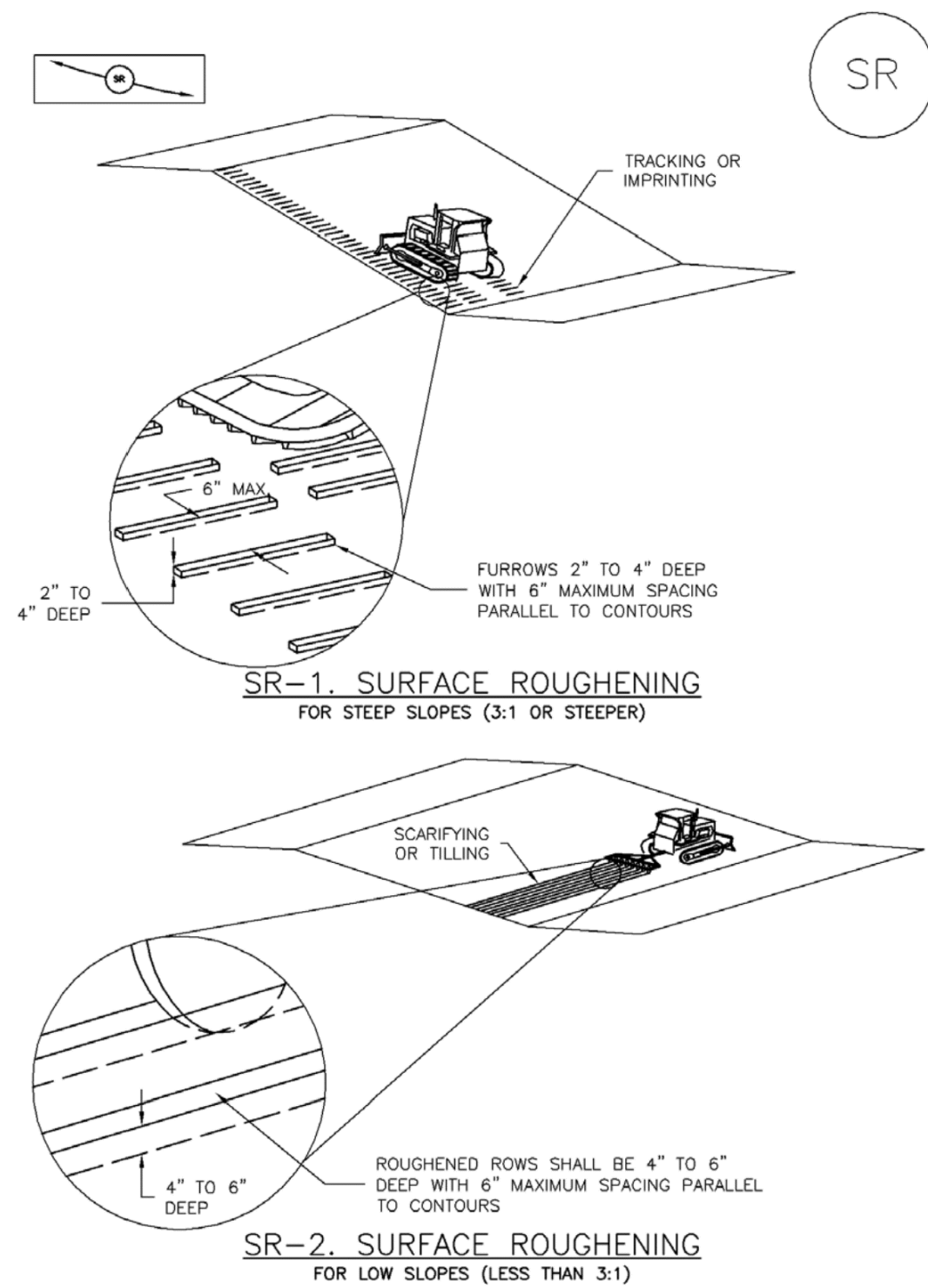
HRGreen HR GREEN - COLORADO SPRINGS
 1975 RESEARCH PARKWAY SUITE 160
 COLORADO SPRINGS, CO 80920
 PHONE: 719.300.4140
 FAX: 713.965.0044

**FLYING HORSE NORTH FILING 4
 PRI #2, LLC.**
 EL PASO COUNTY, CO

GRADING & EROSION CONTROL PLAN
 FINAL GEC

**SHEET
 GEC
 10**

Surface Roughening (SR) EC-1



November 2010 Urban Drainage and Flood Control District Urban Storm Drainage Criteria Manual Volume 3 SR-3

Mulching (MU) EC-4

Description

Mulching consists of evenly applying straw, hay, shredded wood mulch, rock, bark or compost to disturbed soils and securing the mulch by crimping, tackifiers, netting or other measures.



Photograph MU-1. An area that was recently seeded, mulched, and crimped.

Mulch can be applied either using standard mechanical dry application methods or using hydromulching equipment that hydraulically applies a slurry of water, wood fiber mulch, and often a tackifier.

Appropriate Uses

Use mulch in conjunction with seeding to help protect the seedbed and stabilize the soil. Mulch can also be used as a temporary cover on low to mild slopes to help temporarily stabilize disturbed areas where growing season constraints prevent effective reseeding.

Standard dry mulching is encouraged in most jurisdictions; however, hydromulching may not be allowed in certain jurisdictions or may not be allowed near waterways.

Do not apply mulch during windy conditions.

Design and Installation

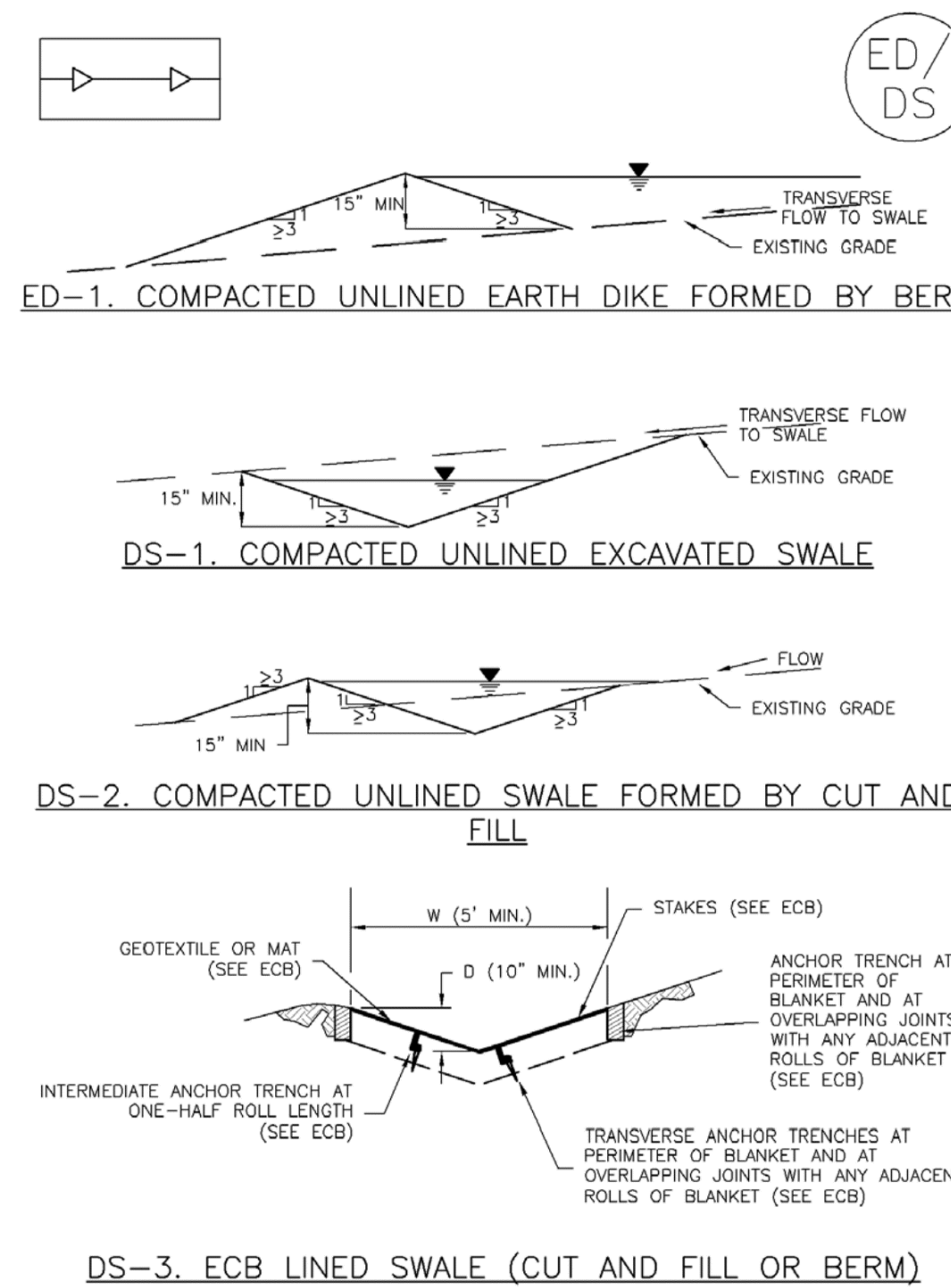
Prior to mulching, surface-roughen areas by rolling with a crimping or punching type roller or by track walking. Track walking should only be used where other methods are impractical because track walking with heavy equipment typically compacts the soil.

A variety of mulches can be used effectively at construction sites. Consider the following:

Table with 2 columns: Functions, Mulch. Rows include Erosion Control (Yes), Sediment Control (Moderate), and Site/Material Management (No).

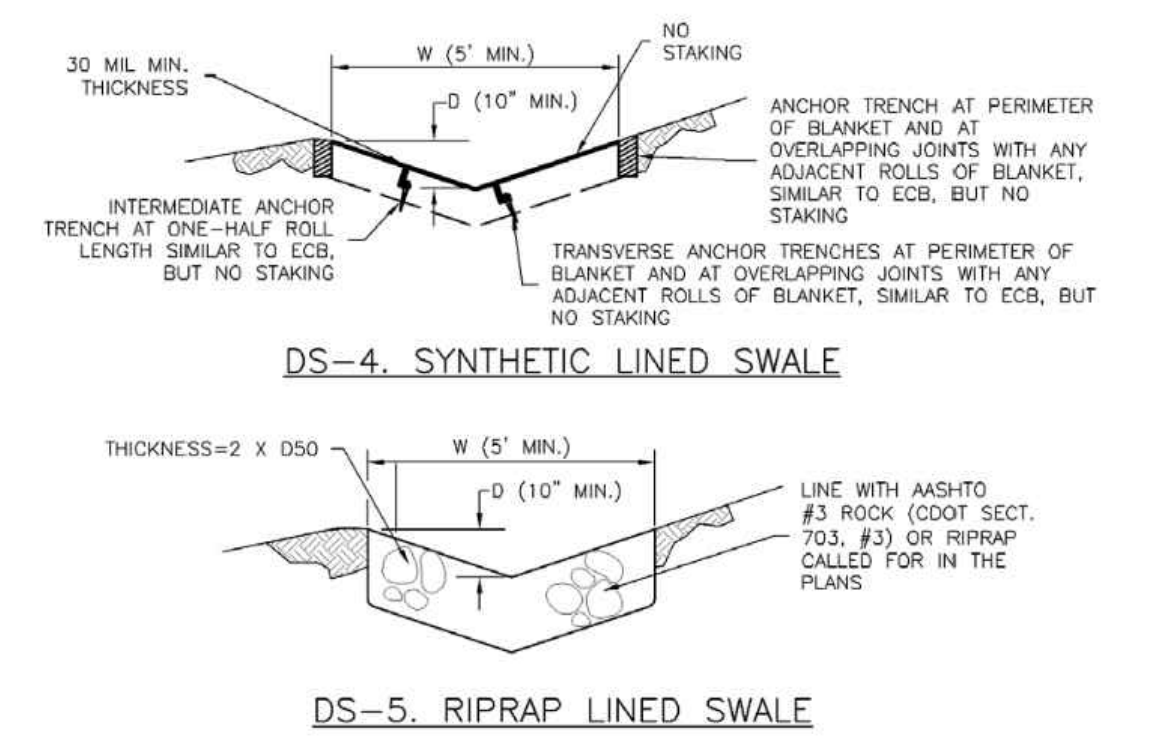
June 2012 Urban Drainage and Flood Control District Urban Storm Drainage Criteria Manual Volume 3 MU-1

Earth Dikes and Drainage Swales (ED/DS) EC-10



November 2010 Urban Drainage and Flood Control District Urban Storm Drainage Criteria Manual Volume 3 ED/DS-3

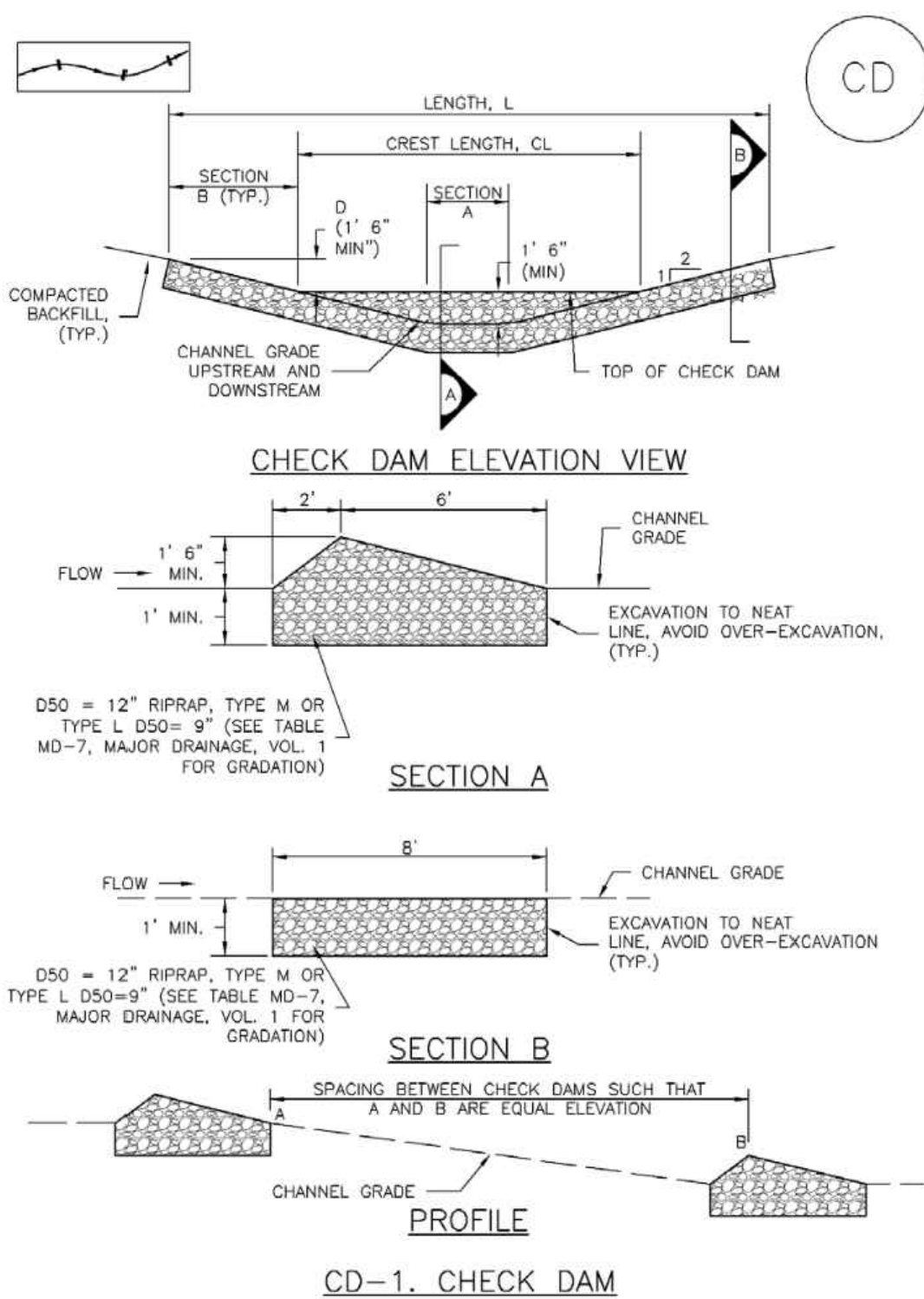
EC-10 Earth Dikes and Drainage Swales (ED/DS)



- EARTH DIKE AND DRAINAGE SWALE INSTALLATION NOTES: 1. SEE SITE PLAN FOR: LOCATION OF DIVERSION SWALE, TYPE OF SWALE (UNLINED, COMPACTED AND/OR LINED), LENGTH OF EACH SWALE, DEPTH, D, AND WIDTH, W DIMENSIONS, FOR ECB/TRM LINED DITCH, SEE ECB DETAIL, FOR RIPRAP LINED DITCH, SIZE OF RIPRAP, D50. 2. SEE DRAINAGE PLANS FOR DETAILS OF PERMANENT CONVEYANCE FACILITIES AND/OR DIVERSION SWALES EXCEEDING 2-YEAR FLOW RATE OR 10 CFS. 3. EARTH DIKES AND SWALES INDICATED ON SWMP PLAN SHALL BE INSTALLED PRIOR TO LAND-DISTURBING ACTIVITIES IN PROXIMITY. 4. EMBANKMENT IS TO BE COMPACTED TO 90% OF MAXIMUM DENSITY AND WITHIN 2% OF OPTIMUM MOISTURE CONTENT ACCORDING TO ASTM D698. 5. SWALES ARE TO DRAIN TO A SEDIMENT CONTROL BMP. 6. FOR LINED DITCHES, INSTALLATION OF ECB/TRM SHALL CONFORM TO THE REQUIREMENTS OF THE ECB DETAIL. 7. WHEN CONSTRUCTION TRAFFIC MUST CROSS A DIVERSION SWALE, INSTALL A TEMPORARY CULVERT WITH A MINIMUM DIAMETER OF 12 INCHES.

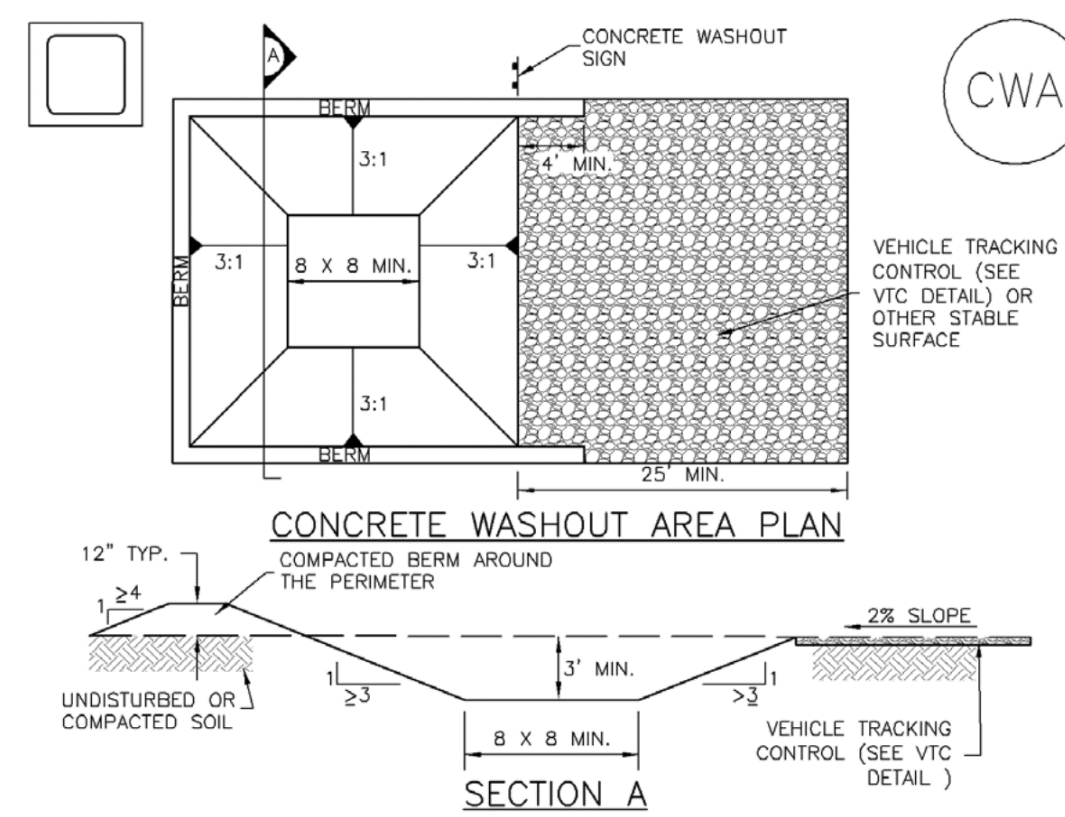
ED/DS-4 Urban Drainage and Flood Control District Urban Storm Drainage Criteria Manual Volume 3 November 2010

Check Dams (CD) EC-12



November 2010 Urban Drainage and Flood Control District Urban Storm Drainage Criteria Manual Volume 3 CD-3

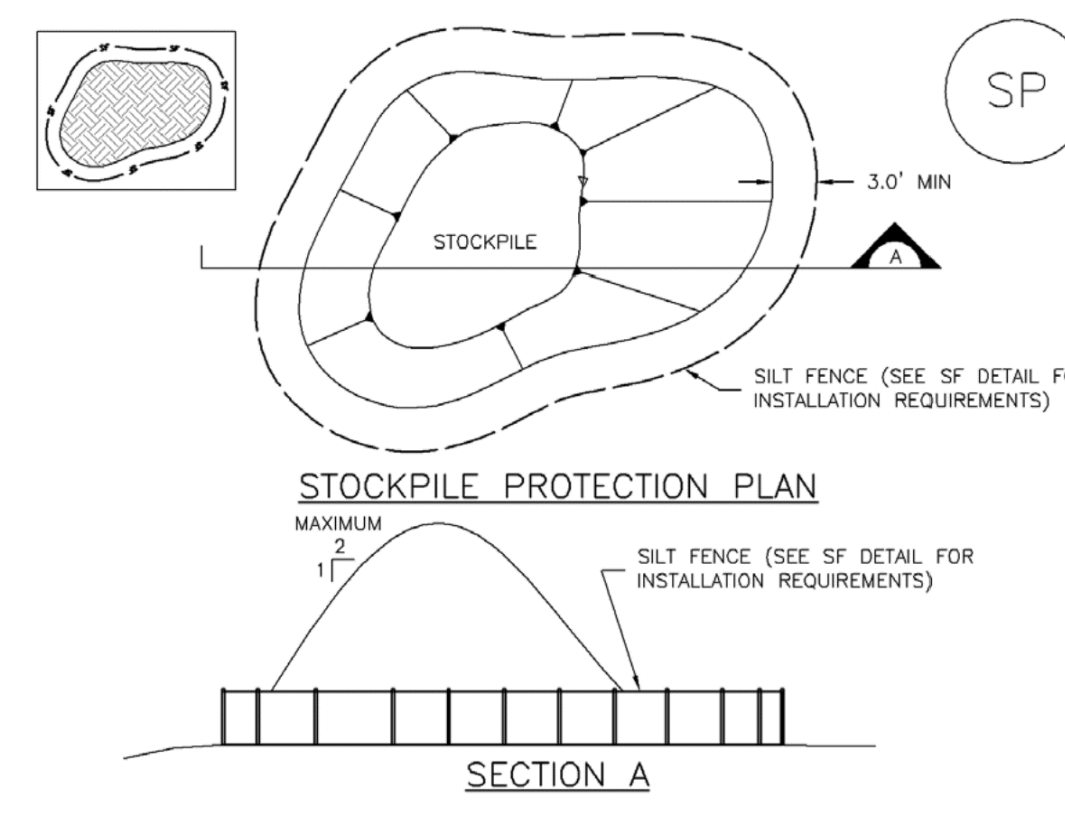
Concrete Washout Area (CWA) MM-1



- CWA-1. CONCRETE WASHOUT AREA CWA INSTALLATION NOTES: 1. SEE PLAN VIEW FOR: CWA INSTALLATION LOCATION. 2. DO NOT LOCATE AN UNLINED CWA WITHIN 400' OF ANY NATURAL DRAINAGE PATHWAY OR WATERBODY. DO NOT LOCATE WITHIN 1,000' OF ANY WELLS OR DRINKING WATER SOURCES. IF SITE CONSTRAINTS MAKE THIS INFEASIBLE, OR IF HIGHLY PERMEABLE SOILS EXIST ON SITE, THE CWA MUST BE INSTALLED WITH AN IMPERMEABLE LINER (1.6 MIL. MIN. THICKNESS) OR SURFACE STORAGE ALTERNATIVES USING PREFABRICATED CONCRETE WASHOUT DEVICES OR A LINED ABOVE GROUND STORAGE ARE SHOULD BE USED. 3. THE CWA SHALL BE INSTALLED PRIOR TO CONCRETE PLACEMENT ON SITE. 4. CWA SHALL INCLUDE A FLAT SUBSURFACE PIT THAT IS AT LEAST 8' BY 8' SLOPES LEADING OUT OF THE SUBSURFACE PIT SHALL BE 3:1 OR FLATTER. THE PIT SHALL BE AT LEAST 3' DEEP. 5. BERM SURROUNDING SIDES AND BACK OF THE CWA SHALL HAVE MINIMUM HEIGHT OF 1'. 6. VEHICLE TRACKING PAD SHALL BE SLOPED 2% TOWARDS THE CWA. 7. SIGNS SHALL BE PLACED AT THE CONSTRUCTION ENTRANCE, AT THE CWA, AND ELSEWHERE AS NECESSARY TO CLEARLY INDICATE THE LOCATION OF THE CWA TO OPERATORS OF CONCRETE TRUCKS AND PUMP TRUCKS. 8. USE EXCAVATED MATERIAL FOR PERIMETER BERM CONSTRUCTION.

November 2010 Urban Drainage and Flood Control District Urban Storm Drainage Criteria Manual Volume 3 CWA-3

Stockpile Management (SP) MM-2



- SP-1. STOCKPILE PROTECTION STOCKPILE PROTECTION INSTALLATION NOTES: 1. SEE PLAN VIEW FOR: LOCATION OF STOCKPILES, TYPE OF STOCKPILE PROTECTION. 2. INSTALL PERIMETER CONTROLS IN ACCORDANCE WITH THEIR RESPECTIVE DESIGN DETAILS. SILT FENCE IS SHOWN IN THE STOCKPILE PROTECTION DETAILS; HOWEVER, OTHER TYPES OF PERIMETER CONTROLS INCLUDING SEDIMENT CONTROL LOGS OR ROCK SOCKS MAY BE SUITABLE IN SOME CIRCUMSTANCES. CONSIDERATIONS FOR DETERMINING THE APPROPRIATE TYPE OF PERIMETER CONTROL FOR A STOCKPILE INCLUDE WHETHER THE STOCKPILE IS LOCATED ON A PERVIOUS OR IMPERVIOUS SURFACE, THE RELATIVE HEIGHTS OF THE PERIMETER CONTROL AND STOCKPILE, THE ABILITY OF THE PERIMETER CONTROL TO CONTAIN THE STOCKPILE WITHOUT FAILING IN THE EVENT THAT MATERIAL FROM THE STOCKPILE SHIFTS OR SLUMPS AGAINST THE PERIMETER, AND OTHER FACTORS. 3. STABILIZE THE STOCKPILE SURFACE WITH SURFACE ROUGHENING, TEMPORARY SEEDING AND MULCHING, EROSION CONTROL BLANKETS, OR SOIL BINDERS. SOILS STOCKPILED FOR AN EXTENDED PERIOD (TYPICALLY FOR MORE THAN 60 DAYS) SHOULD BE SEEDING AND MULCHED WITH A TEMPORARY GRASS COVER ONCE THE STOCKPILE IS PLACED (TYPICALLY WITHIN 14 DAYS). USE OF MULCH ONLY OR A SOIL BINDER IS ACCEPTABLE IF THE STOCKPILE WILL BE IN PLACE FOR A MORE LIMITED TIME PERIOD (TYPICALLY 30-60 DAYS). 4. FOR TEMPORARY STOCKPILES ON THE INTERIOR PORTION OF A CONSTRUCTION SITE, WHERE OTHER DOWNGRADE CONTROLS, INCLUDING PERIMETER CONTROL, ARE IN PLACE, STOCKPILE PERIMETER CONTROLS MAY NOT BE REQUIRED.

November 2010 Urban Drainage and Flood Control District Urban Storm Drainage Criteria Manual Volume 3 SP-3

DRAWN BY: AMC JOB DATE: 12/5/2024 BAR IS ONE INCH ON OFFICIAL DRAWINGS. APPROVED: RDL JOB NUMBER: 211030.240 0 1" IF NOT ONE INCH, ADJUST SCALE ACCORDINGLY. CAD DATE: 1/16/2025 CAD FILE: J:\2021\211030\CAD\Drawings\C\Filing_No_4\GEC\GEC-Details

Table with 4 columns: NO., DATE, BY, REVISION DESCRIPTION.

HR GREEN - COLORADO SPRINGS 1975 RESEARCH PARKWAY SUITE 160 COLORADO SPRINGS, CO 80920 PHONE: 719.300.4140 FAX: 713.965.0044

FLYING HORSE NORTH FILING 4 PRI #2, LLC. EL PASO COUNTY, CO

Good Housekeeping Practices (GH) MM-3

Description

Implement construction site good housekeeping practices to prevent pollution associated with solid, liquid and hazardous construction-related materials and wastes. Stormwater Management Plans (SWMPs) should clearly specify BMPs including these good housekeeping practices:



Photographs GH-1 and GH-2. Proper materials storage and secondary containment for fuel tanks are important good housekeeping practices. Photos courtesy of CDOT and City of Aurora.

- Provide for waste management.
- Establish proper building material staging areas.
- Designate paint and concrete washout areas.
- Establish proper equipment/vehicle fueling and maintenance practices.
- Control equipment/vehicle washing and allowable non-stormwater discharges.
- Develop a spill prevention and response plan.

Acknowledgement: This Fact Sheet is based directly on EPA guidance provided in *Developing Your Stormwater Pollution Prevention Plan (EPA 2007)*.

Appropriate Uses

Good housekeeping practices are necessary at all construction sites.

Design and Installation

The following principles and actions should be addressed in SWMPs:

- **Provide for Waste Management.** Implement management procedures and practices to prevent or reduce the exposure and transport of pollutants in stormwater from solid, liquid and sanitary wastes that will be generated at the site. Practices such as trash disposal, recycling, proper material handling, and cleanup measures can reduce the potential for stormwater runoff to pick up construction site wastes and discharge them to surface waters. Implement a comprehensive set of waste-management practices for hazardous or toxic materials, such as paints, solvents, petroleum products, pesticides, wood preservatives, acids, roofing tar, and other materials. Practices should include storage, handling, inventory, and cleanup procedures, in case of spills. Specific practices that should be considered include:

Solid or Construction Waste

- Designate trash and bulk waste-collection areas on-site.

Good Housekeeping	
Functions	
Erosion Control	No
Sediment Control	No
Site/Material Management	Yes

November 2010 Urban Drainage and Flood Control District Urban Storm Drainage Criteria Manual Volume 3 GH-1

MM-3 Good Housekeeping Practices (GH)

- Recycle materials whenever possible (e.g., paper, wood, concrete, oil).
- Segregate and provide proper disposal options for hazardous material wastes.
- Clean up litter and debris from the construction site daily.
- Locate waste-collection areas away from streets, gutters, watercourses, and storm drains. Waste-collection areas (dumpsters, and such) are often best located near construction site entrances to minimize traffic on disturbed soils. Consider secondary containment around waste collection areas to minimize the likelihood of contaminated discharges.
- Empty waste containers before they are full and overflowing.

Sanitary and Septic Waste

- Provide convenient, well-maintained, and properly located toilet facilities on-site.
- Locate toilet facilities away from storm drain inlets and waterways to prevent accidental spills and contamination of stormwater.
- Maintain clean restroom facilities and empty portable toilets regularly.
- Where possible, provide secondary containment pans under portable toilets.
- Provide tie-downs or stake-downs for portable toilets.
- Educate employees, subcontractors, and suppliers on locations of facilities.
- Treat or dispose of sanitary and septic waste in accordance with state or local regulations. Do not discharge or bury wastewater at the construction site.
- Inspect facilities for leaks. If found, repair or replace immediately.
- Special care is necessary during maintenance (pump out) to ensure that waste and/or biocide are not spilled on the ground.

Hazardous Materials and Wastes

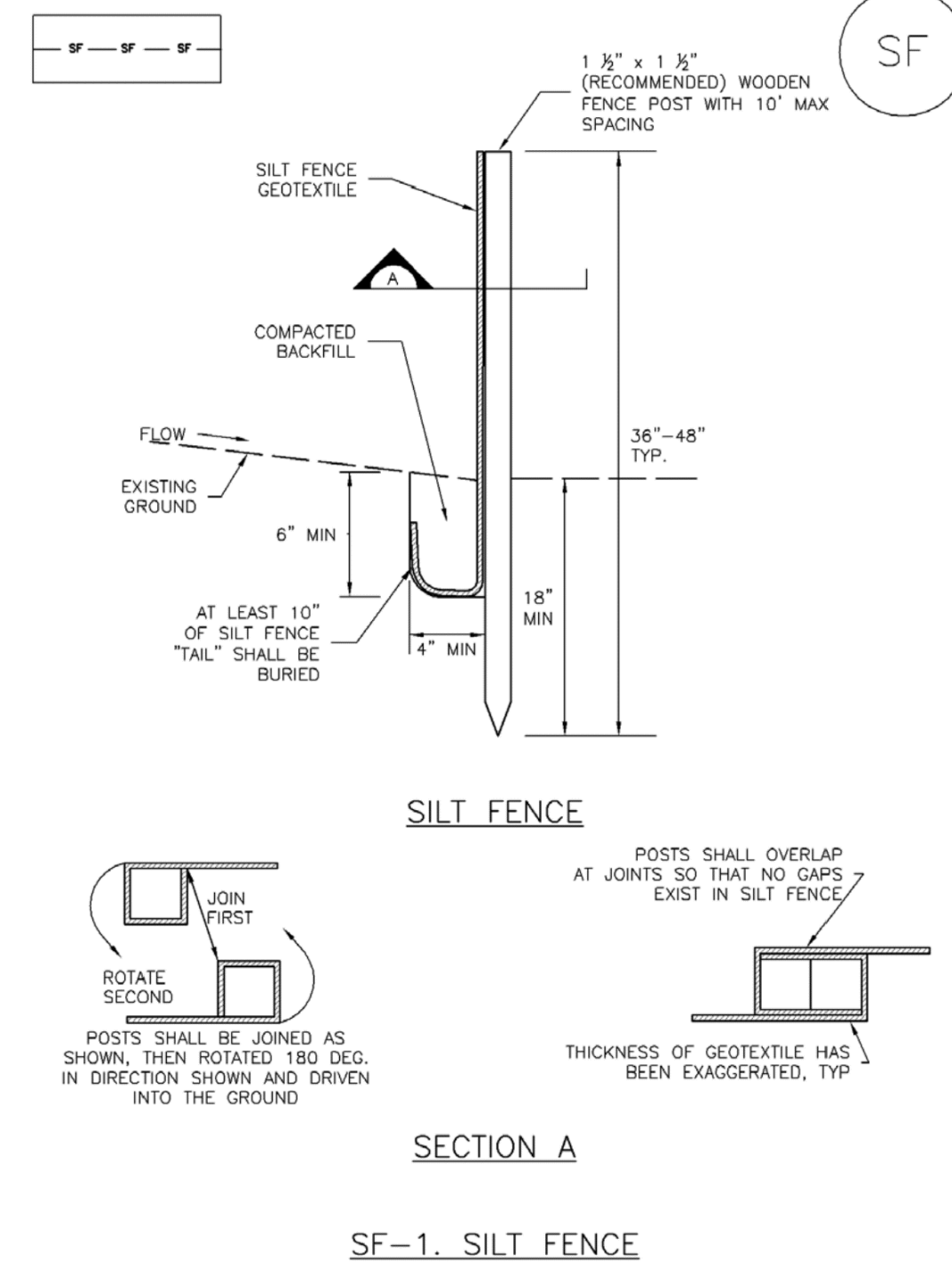
- Develop and implement employee and subcontractor education, as needed, on hazardous and toxic waste handling, storage, disposal, and cleanup.
- Designate hazardous waste-collection areas on-site.
- Place all hazardous and toxic material wastes in secondary containment.



Photograph GH-3. Locate portable toilet facilities on level surfaces away from waterways and storm drains. Photo courtesy of WVE.

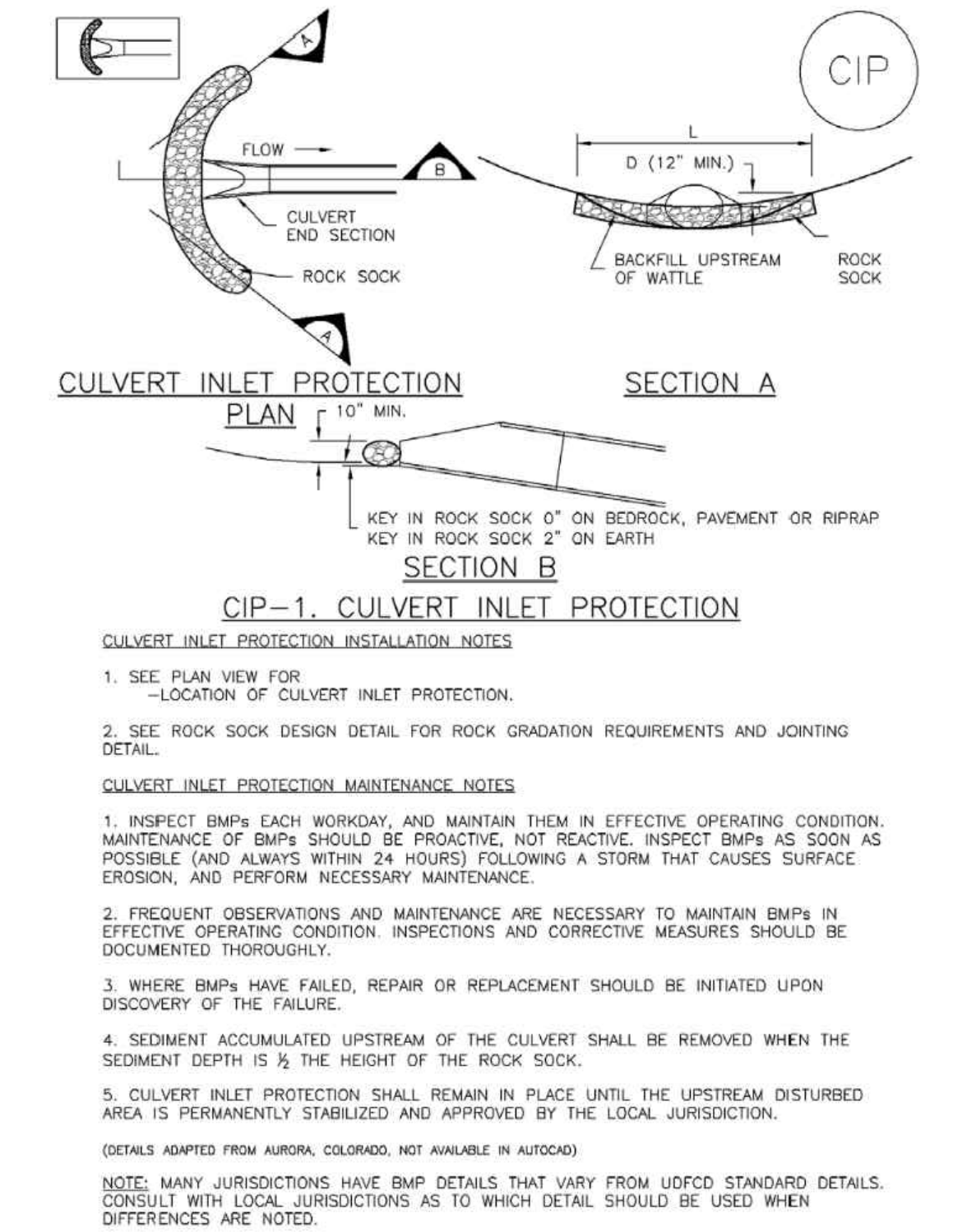
GH-2 Urban Drainage and Flood Control District Urban Storm Drainage Criteria Manual Volume 3 November 2010

Silt Fence (SF) SC-1



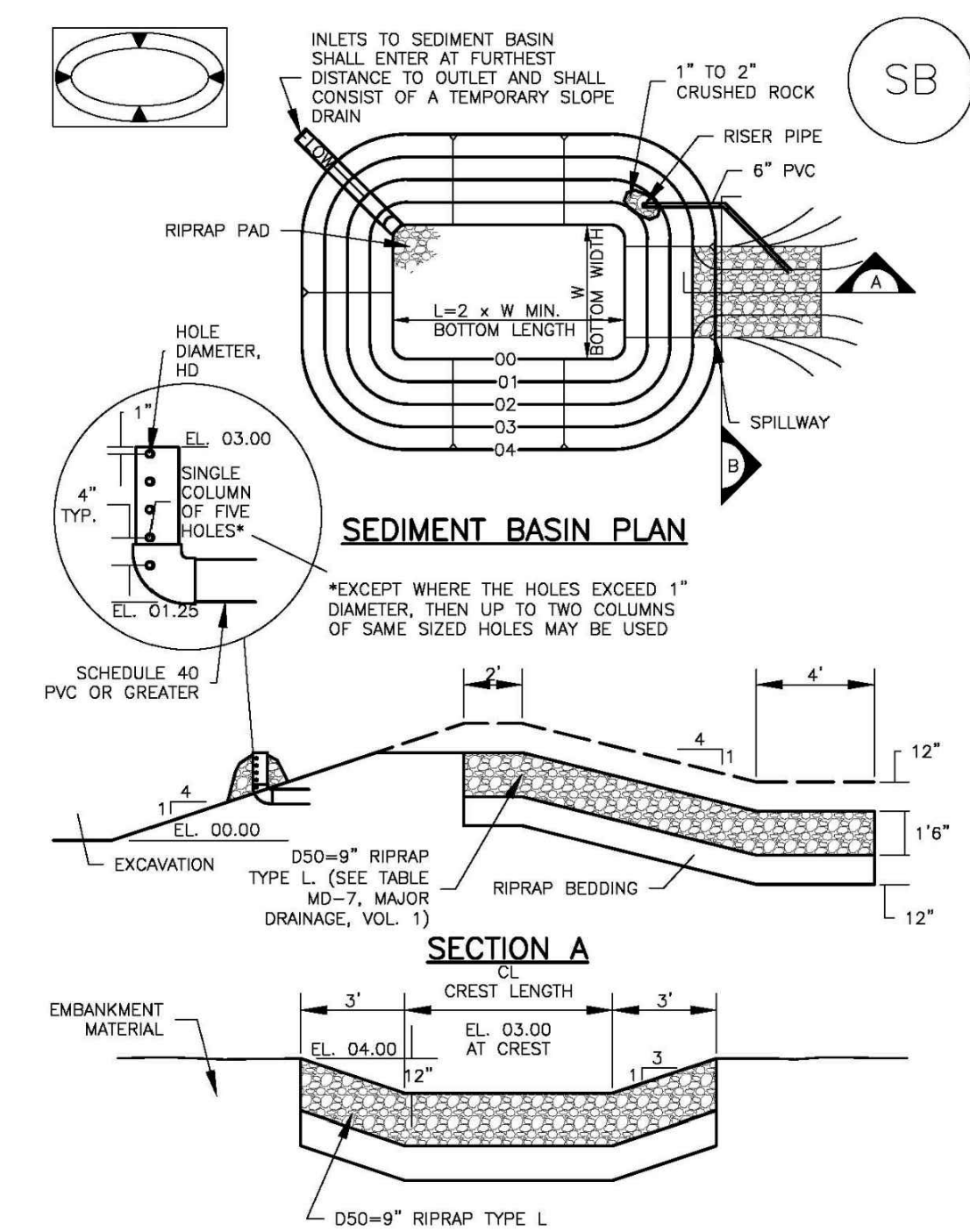
November 2010 Urban Drainage and Flood Control District Urban Storm Drainage Criteria Manual Volume 3 SF-3

Inlet Protection (IP) SC-6



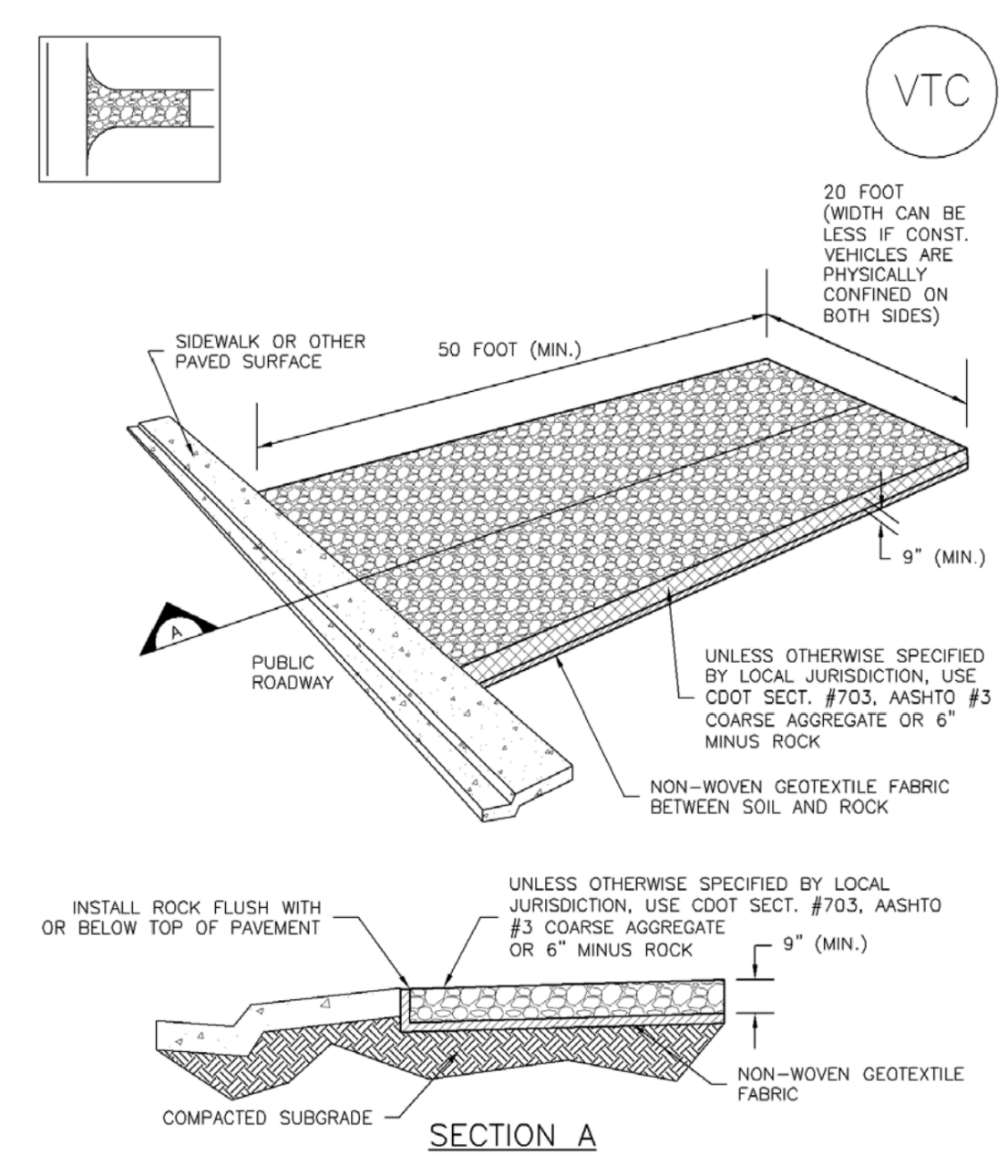
August 2013 Urban Drainage and Flood Control District Urban Storm Drainage Criteria Manual Volume 3 IP-7

Sediment Basin (SB) SC-7



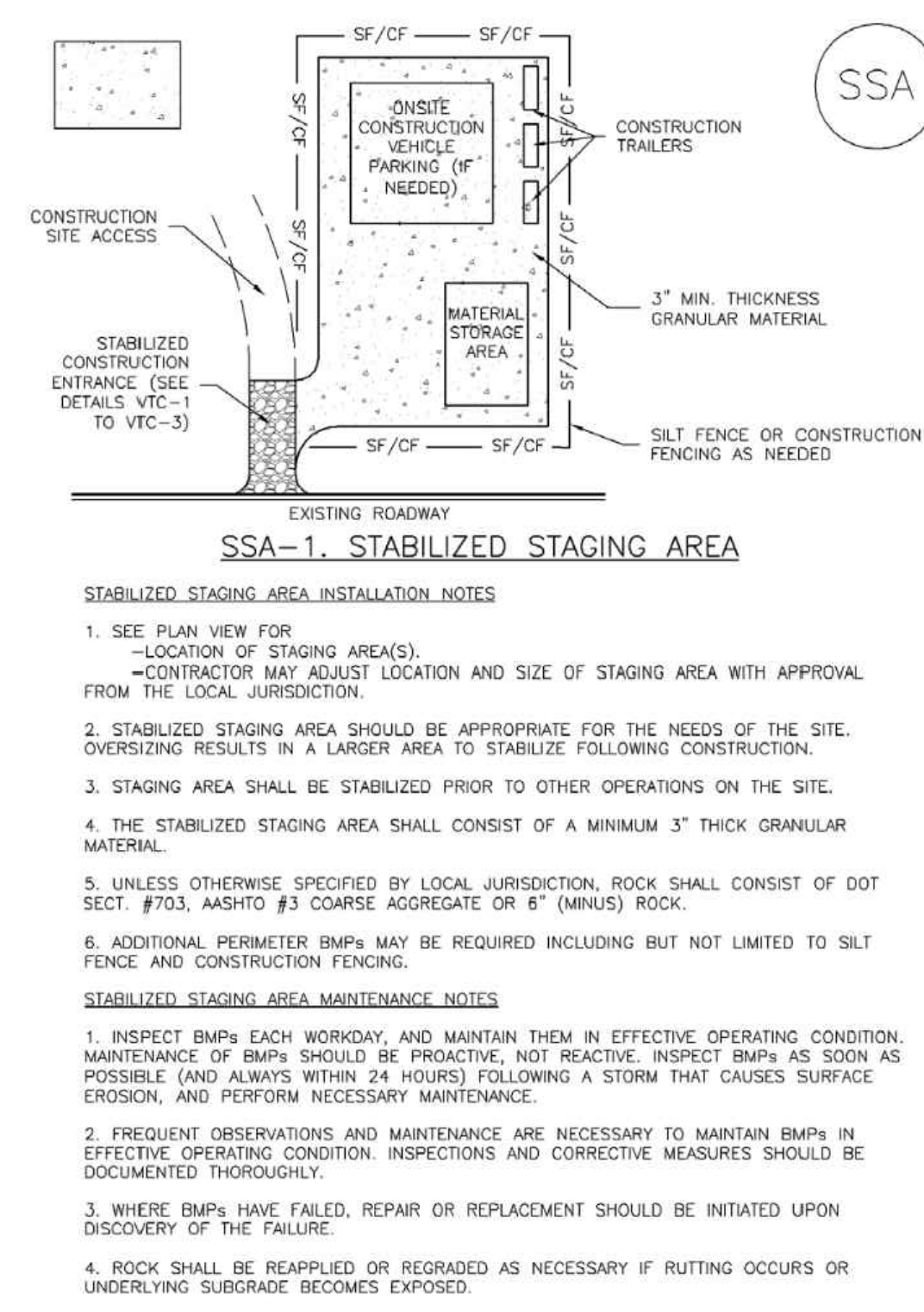
August 2013 Urban Drainage and Flood Control District Urban Storm Drainage Criteria Manual Volume 3 SB-5

Vehicle Tracking Control (VTC) SM-4



November 2010 Urban Drainage and Flood Control District Urban Storm Drainage Criteria Manual Volume 3 VTC-3

Stabilized Staging Area (SSA) SM-6



November 2010 Urban Drainage and Flood Control District Urban Storm Drainage Criteria Manual Volume 3 SSA-3

DRAWN BY: AMC JOB DATE: 12/5/2024 BAR IS ONE INCH ON OFFICIAL DRAWINGS.
 APPROVED: RDL JOB NUMBER: 211030.240 0" style="font-size: small;"> IF NOT ONE INCH, ADJUST SCALE ACCORDINGLY.
 CAD DATE: 1/16/2025
 CAD FILE: J:\2021\211030\CAD\Drawings\C\Filing_No_4\GEC\GEC-Details

NO.	DATE	BY	REVISION DESCRIPTION

HRGreen
 HR GREEN - COLORADO SPRINGS
 1975 RESEARCH PARKWAY SUITE 160
 COLORADO SPRINGS, CO 80920
 PHONE: 719.300.4140
 FAX: 713.965.0044

**FLYING HORSE NORTH FILING 4
 PRI #2, LLC.
 EL PASO COUNTY, CO**

**GRADING & EROSION CONTROL PLAN
 DETAILS**

**SHEET
 DT
 12**