

Trip Distribution and Haul Route

Distribution of trips is shown in Figure 3 below. Based on existing traffic counts taken at Las Vegas Street and Janitell Road, the distribution is expected to be as follows:

- 25% oriented south along Janitell Road
- 37.5% oriented northwest along Las Vegas Street
- 37.5% oriented southeast along Las Vegas Street

The haul routes to and from the site are also represented by the distribution of trips shown in Figure 3.

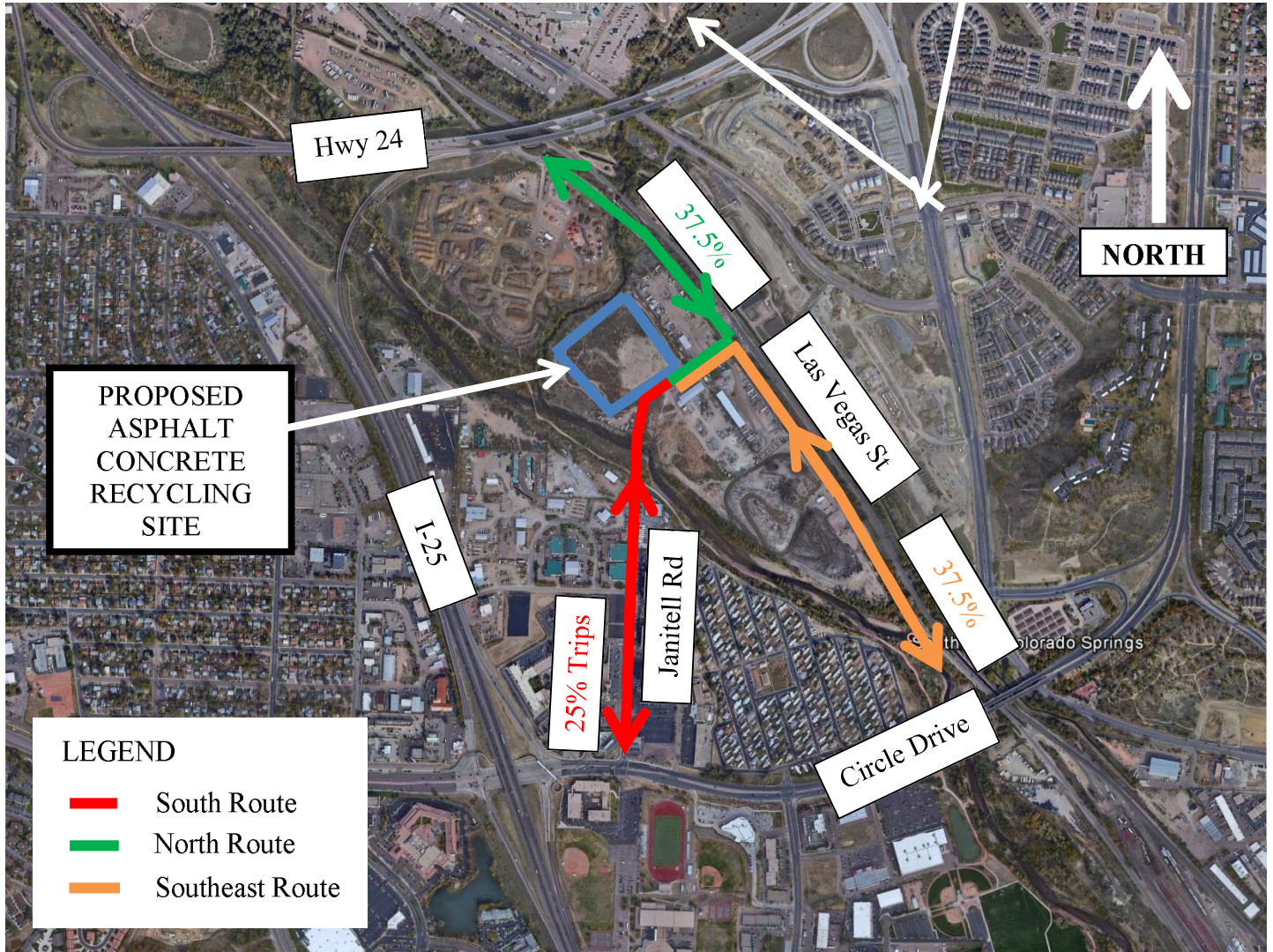


Figure 3 – Trip Distribution and Haul Route – Asphalt Concrete Recycling Project Site, El Paso County, CO