

**REPORTING REQUIREMENTS**

ANTICIPATED STARTING AND COMPLETION TIME PERIOD OF SITE GRADING: September 1, 2022  
 EXPECTED DATE ON WHICH THE FINAL STABILIZATION WILL BE COMPLETED: June 30, 2023  
 TOTAL AREA OF THE SITE TO BE CLEARED, EXCAVATED OR GRADED: 3.4 acres  
 NAME OF RECEIVING WATERS: East Fork of Sand Creek, discharging to Sand Creek which discharges to Fountain Creek  
 SOILS INFORMATION: Blendon Sandy Loam (0-3% slopes), Blakeland Loamy Sand (1-9% slopes) [NRCS Soil Survey]

**EPC STORMWATER REVIEW COMMENTS ARE SHOWN IN ORANGE BOXES WITH BLACK TEXT**

SUBDIVISION NAME: N/A  
 CONTROL MEASURE COST ESTIMATE: (not inclusive of pavement or curb & gutter repair)  
 Rock Socks max 30 bags x \$3/unit = \$90  
 Seiment Control Log 1,500 ft x \$3/LF = \$4,500  
 Street Sweeping 15 days \* \$220/day = \$3,300 (Assume three times a week during construction)  
 Vehicle Tracking 1 Tracking Pad \* \$1,800/pad = \$1,800 for VTC  
 Restoration max 1 acre \* \$2,900/acre = \$2,900 for Hydrseeding/mulching/tackifier  
 Subtotal = \$12,590  
 Subtotal x 40% Maintenance of CONTROL MEASURES = \$5,036  
 Total = \$17,626

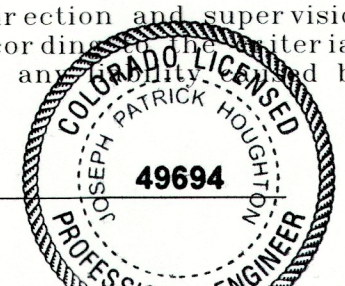
PROPOSED TOPOGRAPHY: The site will be returned as closely as possible to its pre-construction grade  
 LOCATION OF ANY OTHER PROPOSED FEATURES AND STRUCTURES ON THIS SITE: N/A  
 LOCATION AND PLANS FOR ALL DRAINAGE FEATURES: Figures 2-4  
 LOCATION OF PERMANENT SOIL EROSION AND SEDIMENT CONTROL MEASURES: Figures 2-4  
 LOCATION OF ANY DEDICATED ASPHALT OR CONCRETE BATCH PLANTS: N/A  
 EMERGENCY OVERFLOW SWALES: N/A  
 FLOW ROUTE - FLOW THROUGH AND OVERFLOW OF PERMANENT CONTROL MEASURES AND TEMPORARY SEDIMENT BASINS: Figure 4  
 DETAIL DRAWINGS OF PERMANENT CONTROL MEASURES: Appendix 3 to the SWMP

NOTES:  
 Fueling of equipment may occur along the project route; fueling guidelines are included in the SWMP.  
 Approximately 13% of the disturbance area is within the designated 100-year floodplain.

**ENGINEER'S STATEMENT**

This Grading and Erosion Control Plan was prepared under my direction and supervision and is correct to the best of my knowledge and belief. Said plan has been prepared according to the criteria established by the County for Grading and Erosion Control Plans. I accept responsibility for any errors or omissions on my part in preparing this report.

Joseph Houghton, PE # 49694  
 Date: 8/3/22



**OWNER'S STATEMENT**

The Owner will comply with the requirements of the Grading and Erosion Control Plan.

Tim Benedict, Field Engineering Supervisor  
 Colorado Springs Utilities  
 7710 Durant Drive  
 Colorado Springs CO 80920  
 Date: 8/4/22

**EL PASO COUNTY**

County plan review is provided only for general conformance with County Design Criteria. The County is not responsible for the accuracy and adequacy of the design, dimensions, and/or elevations which shall be confirmed at the job site. The County through the approval of this document assumes no responsibility for completeness and/or accuracy of this document.

Filed in accordance with the requirements of the El Paso County Land Development Code, Drainage Criteria Manual, Volumes 1 and 2, and Engineering Criteria Manual as amended.

In accordance with ECM Section 1.12, these construction documents will be valid for construction for a period of 2 years from the date signed by the El Paso County Engineer. If construction has not started within those 2 years, the plans will need to be resubmitted for approval, including payment of review fees at the Planning and Community Development Directors' discretion.

Jennifer Irvine, P.E.  
 County Engineer / ECM Administrator  
 Date: Please change to Joshua Palmer, P.E.

Additional erosion control details on maintenance and installation are located in Attachment 4 to the SWMP/GESQCP Narrative

**Sediment Control Log (SCL) SC-2**

SC-2-1, TRENCHED SEDIMENT CONTROL LOG

**Rock Sock (RS) SC-5**

RS-1, ROCK SOCK PERIMETER CONTROL

**Rock Sock (RS) SC-5**

**ROCK SOCK MAINTENANCE NOTES**

- INSPECT BMPs EACH WORKDAY, AND MAINTAIN THEM IN EFFECTIVE OPERATING CONDITION. MAINTENANCE OF BMPs SHOULD BE PROACTIVE, NOT REACTIVE. INSPECT BMPs AS SOON AS POSSIBLE (AND ALWAYS WITHIN 24 HOURS) FOLLOWING A STORM THAT CAUSES SURFACE EROSION, AND PERFORM NECESSARY MAINTENANCE.
- FREQUENT OBSERVATIONS AND MAINTENANCE ARE NECESSARY TO MAINTAIN BMPs IN EFFECTIVE OPERATING CONDITION. INSPECTIONS AND CORRECTIVE MEASURES SHOULD BE DOCUMENTED THOROUGHLY.
- IF BMPs HAVE FAILED, REPAIR OR REPLACEMENT SHOULD BE INITIATED UPON DISCOVERY OF THE FAILURE.
- ROCK SOCKS SHALL BE REPLACED IF THEY BECOME HEAVILY SOILED, OR DAMAGED BEYOND REPAIR.
- SEDIMENT ACCUMULATED UPSTREAM OF ROCK SOCKS SHALL BE REMOVED AS NEEDED TO MAINTAIN FUNCTIONALITY OF THE BMP. TYPICALLY 10% DEPTH OF ACCUMULATED SEDIMENTS IS APPROXIMATELY 5% OF THE HEIGHT OF THE ROCK SOCK.
- ROCK SOCKS ARE TO REMAIN IN PLACE UNTIL THE UPSTREAM DISTURBED AREA IS STABILIZED AND APPROVED BY THE LOCAL JURISDICTION.
- WHEN ROCK SOCKS ARE REMOVED, ALL DISTURBED AREAS SHALL BE COVERED WITH TOPSOIL, SEEDED AND MULCHED OR OTHERWISE STABILIZED AS APPROVED BY LOCAL JURISDICTION.

NOTE: MANY JURISDICTIONS HAVE BMP DETAILS THAT VARY FROM USDF STANDARD DETAILS. CONSULT WITH LOCAL JURISDICTIONS AS TO WHICH DETAIL SHOULD BE USED WHEN DIFFERENCES ARE NOTED.

NOTE: THE DETAILS INCLUDED WITH THIS FACT SHEET SHOW COMMONLY USED, CONVENTIONAL METHODS OF ROCK SOCK INSTALLATION IN THE GENERAL METROPOLITAN AREA. THERE ARE MANY OTHER SIMILAR PROPRIETARY PRODUCTS ON THE MARKET. USDF WEATHER RESOURCES HAS DOCUMENTED USE OF PROPRIETARY PROTECTION PRODUCTS. METHODS IN THE USDF PROPRIETARY METHODS ARE USED. THE APPROPRIATE DETAIL FROM THE MANUFACTURER MUST BE INCLUDED IN THE BMP AND THE BMP MUST BE INSTALLED AND MAINTAINED AS SHOWN IN THE MANUFACTURER'S DETAILS.

SIZE	MAINTENANCE PASSES PER YEAR
2"	NO. 4
3"	NO. 4
4"	NO. 4
6"	NO. 4
8"	NO. 4
12"	NO. 4
18"	NO. 4
24"	NO. 4
30"	NO. 4
36"	NO. 4
42"	NO. 4
48"	NO. 4
60"	NO. 4
72"	NO. 4
84"	NO. 4
96"	NO. 4
108"	NO. 4
120"	NO. 4
132"	NO. 4
144"	NO. 4
156"	NO. 4
168"	NO. 4
180"	NO. 4
192"	NO. 4
204"	NO. 4
216"	NO. 4
228"	NO. 4
240"	NO. 4
252"	NO. 4
264"	NO. 4
276"	NO. 4
288"	NO. 4
300"	NO. 4

MAINTENANCE SPECIFICATIONS FOR NO. 4 CORALS APPLICABLE FOR CONCRETE PERMITS ONLY. ALL ROCK SOCKS SHALL BE FRACTURED FACE. ALL SOCKS SHALL COMPLY WITH GRADATION SHOWN ON THIS SHEET (1/4" MINUS).

1. SEE PLAN VIEW FOR 'LOCATIONS' OF ROCK SOCKS.  
 2. CRUSHED ROCK SHALL BE 18" BANGS IN SIZE WITH A FRACTURED FACE (ALL SOCKS).  
 3. WIRE MESH SHALL BE FABRICATED BY 1/2" GAGE (HOLE) MESH, OR EQUIVALENT, WITH A MAXIMUM OPENING OF 1/2". RECOMMENDED MINIMUM ROLL WIDTH OF 48".  
 4. WIRE MESH SHALL BE SECURED USING 'NO. 8' WIRE TIES AT 6" CENTERS ALONG ALL JOINTS AND AT 2' CENTERS ON ENDS OF SOCKS.  
 5. USDF MANUFACTURERS MAY ALLOW THE USE OF FILTER FABRIC AS AN ALTERNATIVE TO WIRE MESH FOR THE ROCK ENCLOSURE.

**Stockpile Management (SP) MM-2**

SP-1, STOCKPILE PROTECTION

**STOCKPILE PROTECTION INSTALLATION NOTES**

- SEE PLAN VIEW FOR 'LOCATIONS' OF STOCKPILES.
- INSTALL PERIMETER CONTROLS IN ACCORDANCE WITH THEIR RESPECTIVE DESIGN DETAILS. SALT FENCE IS SHOWN IN THE STOCKPILE PROTECTION DETAILS. HOWEVER, OTHER TYPES OF PERIMETER CONTROLS INCLUDING SEDIMENT CONTROL LOGS OR ROCK SOCKS MAY BE SUBSTITUTED IN SOME CIRCUMSTANCES. CONSIDERATIONS FOR DETERMINING APPROPRIATE TYPE OF PERIMETER CONTROL FOR A STOCKPILE INCLUDE WHETHER THE STOCKPILE IS LOCATED ON A PERMANENT OR TEMPORARY SURFACE, THE RESULTING SEDIMENT OR CONFINED SEDIMENT WITHOUT FAILING IN THE EVENT THAT MATERIAL FROM THE STOCKPILE SHIFTS OR SLUMPS AGAINST THE PERIMETER, AND OTHER FACTORS.
- STABILIZE THE STOCKPILE SURFACE WITH SURFACE ROCKING/SEEDING, TEMPORARY SEEDING AND MULCHING, EROSION CONTROL BLANKETS, OR SOIL BINDERS. SALT STOCKPILES FOR AN EXTENDED PERIOD (TYPICALLY FOR MORE THAN 90 DAYS) SHOULD BE SEEDED AND MULCHED WITH A TEMPORARY GRASS COVER OVER THE STOCKPILE IS PLACED (TYPICALLY WITHIN 14 DAYS). USE OF MULCH ONLY OR A SOIL BINDER IS ACCEPTABLE IF THE STOCKPILE WILL BE IN PLACE FOR A MORE LIMITED TIME PERIOD (TYPICALLY 30-60 DAYS).
- FOR TEMPORARY STOCKPILES ON THE WINDWARD PORTION OF A CONSTRUCTION SITE, WHERE OTHER DRAINAGE CONTROLS, INCLUDING PERIMETER CONTROL ARE IN PLACE, STOCKPILE PERIMETER CONTROLS MAY NOT BE REQUIRED.

**Stockpile Management (SM) MM-2**

**STOCKPILE PROTECTION MAINTENANCE NOTES**

- INSPECT BMPs EACH WORKDAY, AND MAINTAIN THEM IN EFFECTIVE OPERATING CONDITION. MAINTENANCE OF BMPs SHOULD BE PROACTIVE, NOT REACTIVE. INSPECT BMPs AS SOON AS POSSIBLE (AND ALWAYS WITHIN 24 HOURS) FOLLOWING A STORM THAT CAUSES SURFACE EROSION, AND PERFORM NECESSARY MAINTENANCE.
- FREQUENT OBSERVATIONS AND MAINTENANCE ARE NECESSARY TO MAINTAIN BMPs IN EFFECTIVE OPERATING CONDITION. INSPECTIONS AND CORRECTIVE MEASURES SHOULD BE DOCUMENTED THOROUGHLY.
- IF BMPs HAVE FAILED, REPAIR OR REPLACEMENT SHOULD BE INITIATED UPON DISCOVERY OF THE FAILURE.
- PERIMETER PROTECTION CONTROLS SHOULD BE REMOVED AS NEEDED TO ACCESS SOIL STOCKPILES, REPLACE PERIMETER CONTROLS BY THE END OF THE WORKDAY.
- STOCKPILE PERIMETER CONTROLS CAN BE REMOVED ONCE ALL THE MATERIAL FROM THE STOCKPILE HAS BEEN USED.

DETAILS ADAPTED FROM ANNEK OULDAK, SEP 2016 (AS SHOWN)

NOTE: MANY JURISDICTIONS HAVE BMP DETAILS THAT VARY FROM USDF STANDARD DETAILS. CONSULT WITH LOCAL JURISDICTIONS AS TO WHICH DETAIL SHOULD BE USED WHEN DIFFERENCES ARE NOTED.

move BMP details to separate sheet so that they are legible when printed. Include inlet protection detail for Peterson Rd and Seeding details.

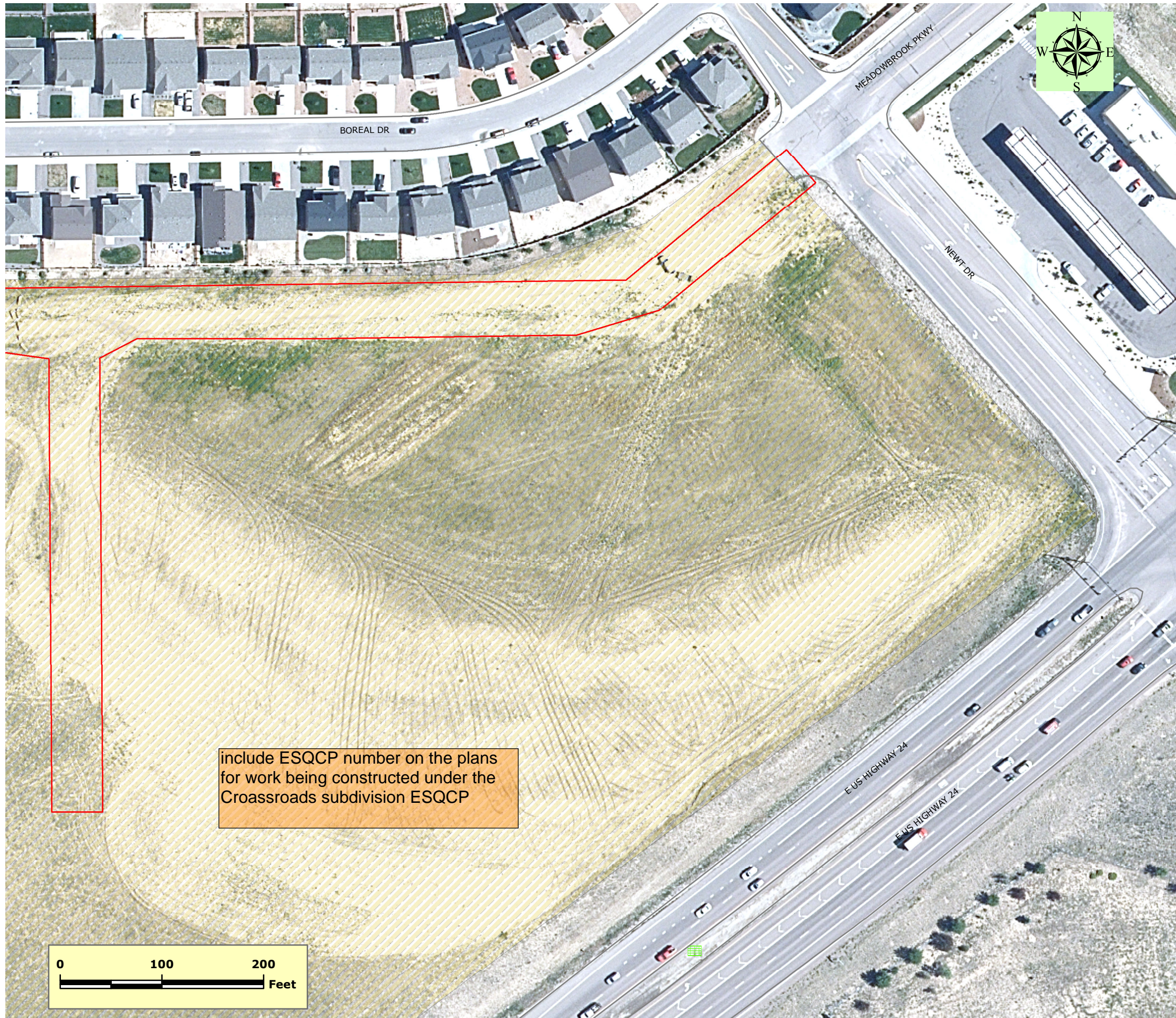
**ENVIRONMENTAL SERVICES DEPARTMENT**  
 TECHNICAL SERVICES SECTION  
 P.O. Box 1103, Mail Code 940  
 COLORADO SPRINGS, CO 80947  
 (719) 668-8426

**TITLE PAGE**  
**EROSION AND STORMWATER QUALITY CONTROL PLAN**  
**Aura at Crossroads Electric and Gas Main Installation**

PCD Filing No: CDR-22-013  
 Prepared By: JPH  
 Date: June 2022

Figure 1 of 5





include ESQCP number on the plans for work being constructed under the Crossroads subdivision ESQCP



# Colorado Springs Utilities

*It's how we're all connected*

Environmental Services Department  
121 South Tejon Street, Fourth Floor  
Colorado Springs, Colorado 80903

- Legend:**
- Streets
  - Stormwater Inlets
  - Construction Project Location
  - Boundary of Planned Construction Disturbance
  - Tree Removal
  - Crossroads GEC Plan Area

**Notes:**

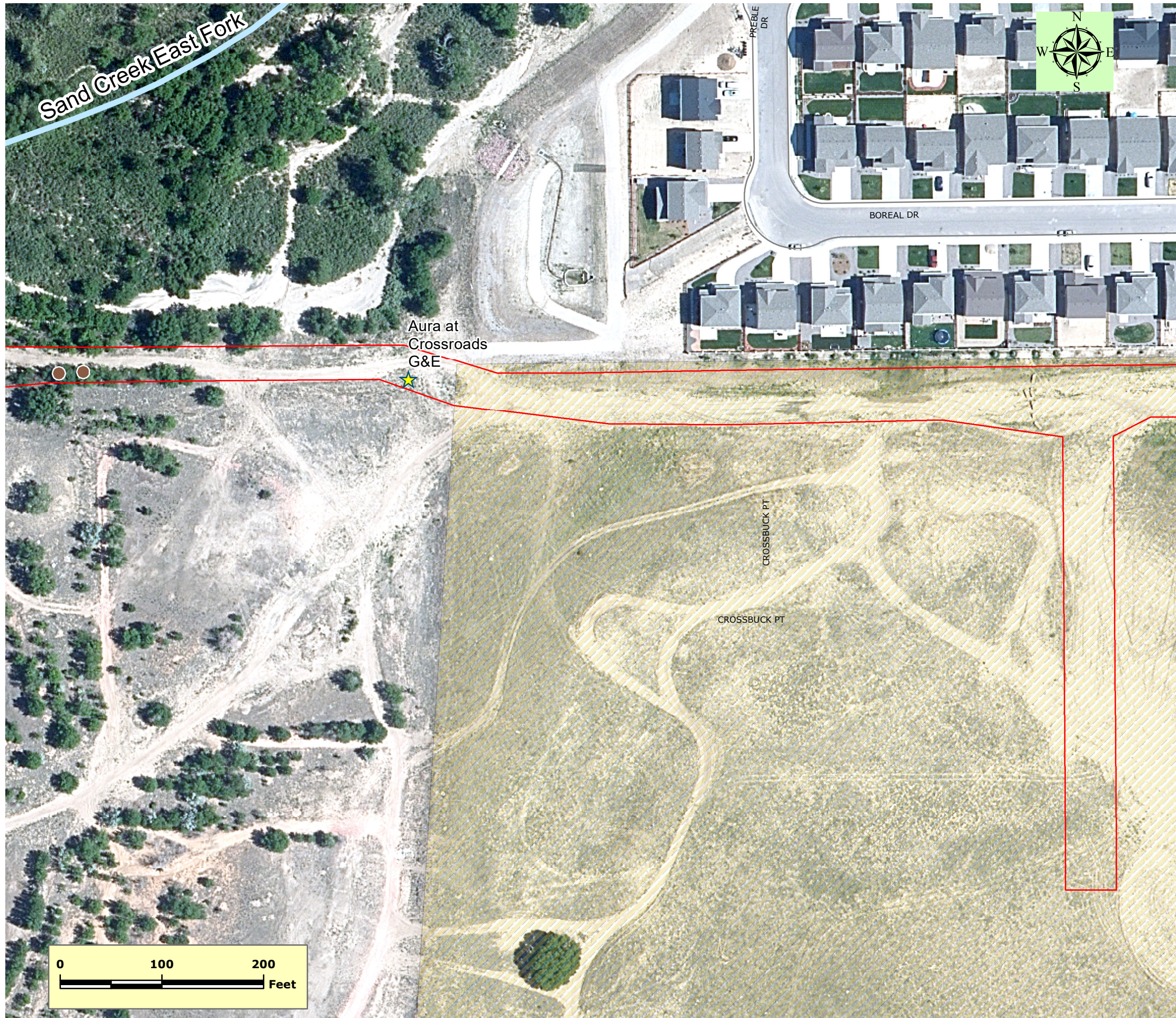
1. The Eastern half of the project area has been recently graded and had no vegetation. It is shown as developer graded area.
2. Vegetation in the disturbance area consists of mostly grasses and weeds.
3. A stand of trees exists within the disturbance area. Most will be left alone. Approximately 4 trees will be removed from the alignment. The property owner supports the removal of these trees. Location of trees shown on the Figure.

## SWMP/ESQCP EXISTING SITE CONDITIONS

### Aura at Crossroads G&E

<b>Project No:</b> PCD File No.:	<b>Figure Number 2 East</b>
<b>Prepared By:</b> J HOUGHTON	
<b>Date:</b> JUNE 2022	





# Colorado Springs Utilities

*It's how we're all connected*

Environmental Services Department  
 121 South Tejon Street, Fourth Floor  
 Colorado Springs, Colorado 80903

**Legend:**

- Streets
- Stormwater Inlets
- Construction Project Location
- Boundary of Planned Construction Disturbance
- Tree Removal
- Crossroads GEC Plan Area

Please clarify what this means

**Notes:**

1. The Eastern half of the project area has been recently graded and had no vegetation. It is shown as developer graded area.
2. Vegetation in the disturbance area consists of mostly grasses and weeds.
3. A stand of trees exists within the disturbance area. Most will be left alone. Approximately 4 trees will be removed from the alignment. The property owner supports the removal of these trees. Location of trees shown on the Figure.

**SWMP/ESQCP  
 EXISTING SITE CONDITIONS**

**Aura at Crossroads G&E**

**Project No:** PCD File No.:

**Prepared By:** J HOUGHTON

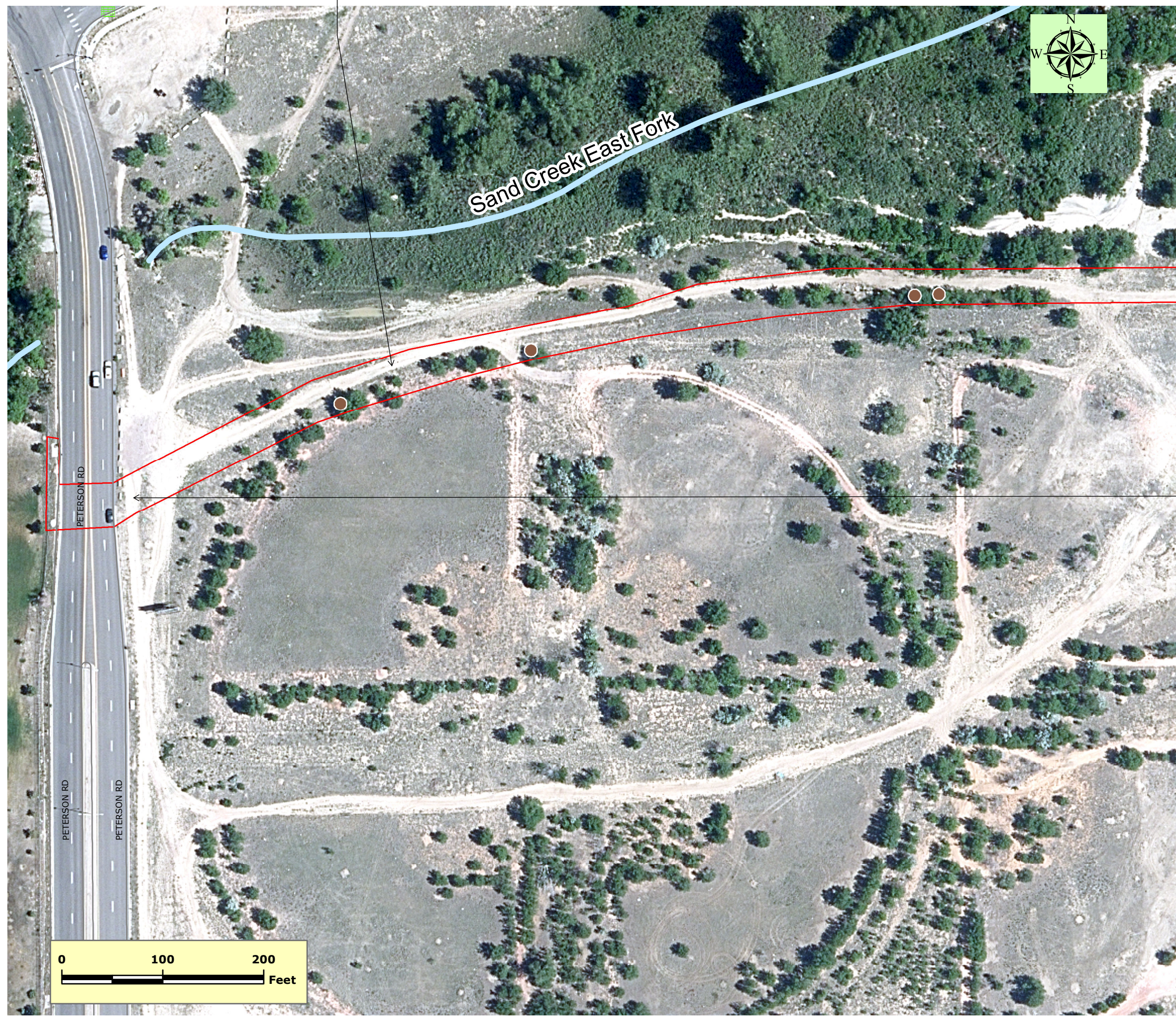
**Date:** JUNE 2022

**Figure  
 Number**

**2 Central**



Clarify if this a trail that will need to be reestablished or if it be seeded following construction?



# Colorado Springs Utilities

*It's how we're all connected*

Environmental Services Department  
121 South Tejon Street, Fourth Floor  
Colorado Springs, Colorado 80903

- Legend:**
- Streets
  - Stormwater Inlets
  - Construction Project Location
  - Boundary of Planned Construction Disturbance
  - Tree Removal
  - Crossroads GEC Plan Area

Will there be access made available to the construction site via Peterson Rd? If not, construction fencing, barricades, and signage should be provided at access points not to be used for construction. Otherwise, install a VTC and provide BMP detail.

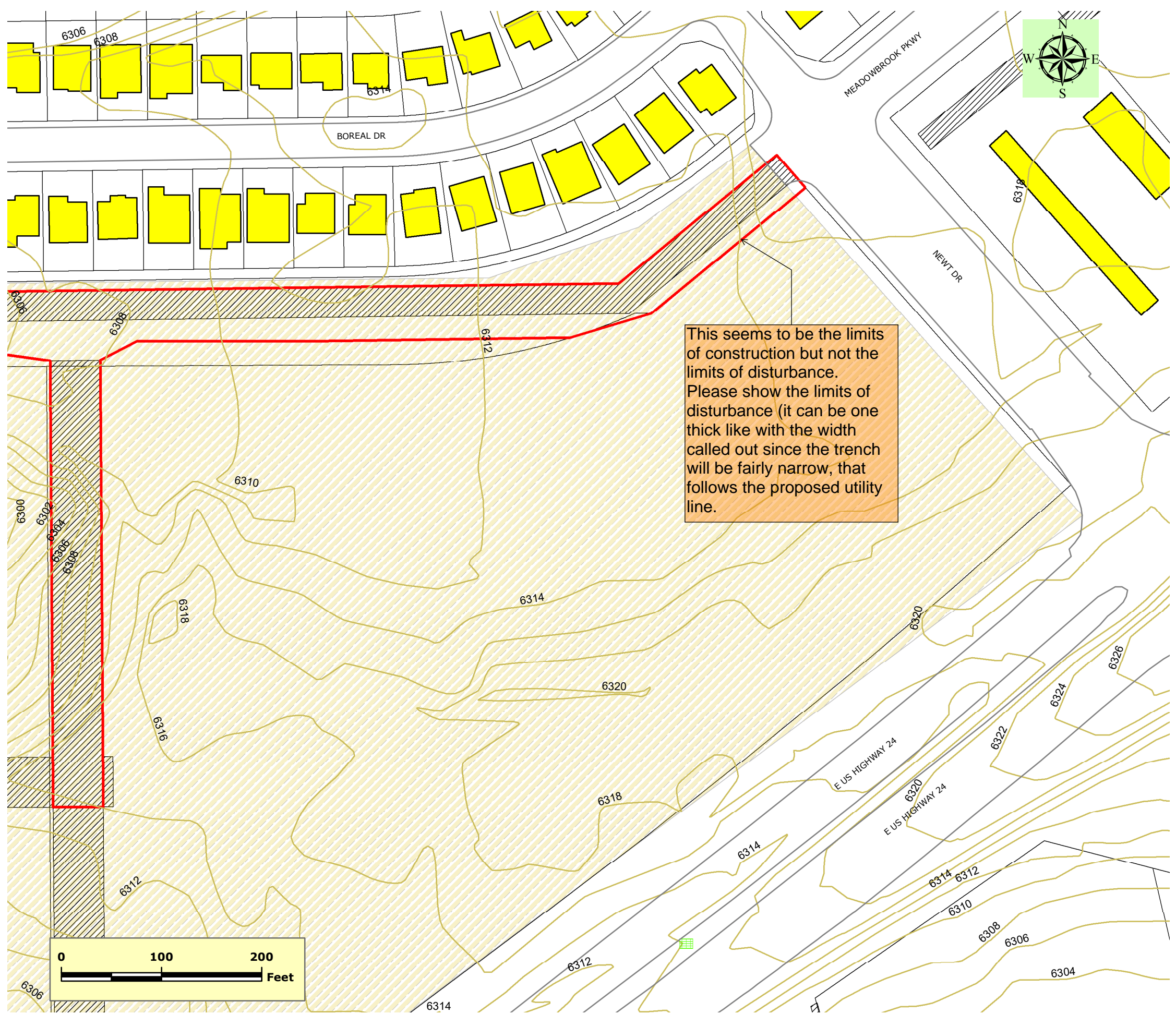
- Notes:
1. The Eastern half of the project area has been recently graded and had no vegetation. It is shown as developer graded area.
  2. Vegetation in the disturbance area consists of mostly grasses and weeds.
  3. A stand of trees exists within the disturbance area. Most will be left alone. Approximately 4 trees will be removed from the alignment. The property owner supports the removal of these trees. Location of trees shown on the Figure.

## SWMP/ESQCP EXISTING SITE CONDITIONS

### Aura at Crossroads G&E

<b>Project No:</b> PCD File No.:	<b>Figure Number 2 West</b>
<b>Prepared By:</b> J HOUGHTON	
<b>Date:</b> JUNE 2022	





This seems to be the limits of construction but not the limits of disturbance. Please show the limits of disturbance (it can be one thick line with the width called out since the trench will be fairly narrow, that follows the proposed utility line.



# Colorado Springs Utilities

*It's how we're all connected*

Environmental Services Department  
 121 South Tejon Street, Fourth Floor  
 Colorado Springs, Colorado 80903

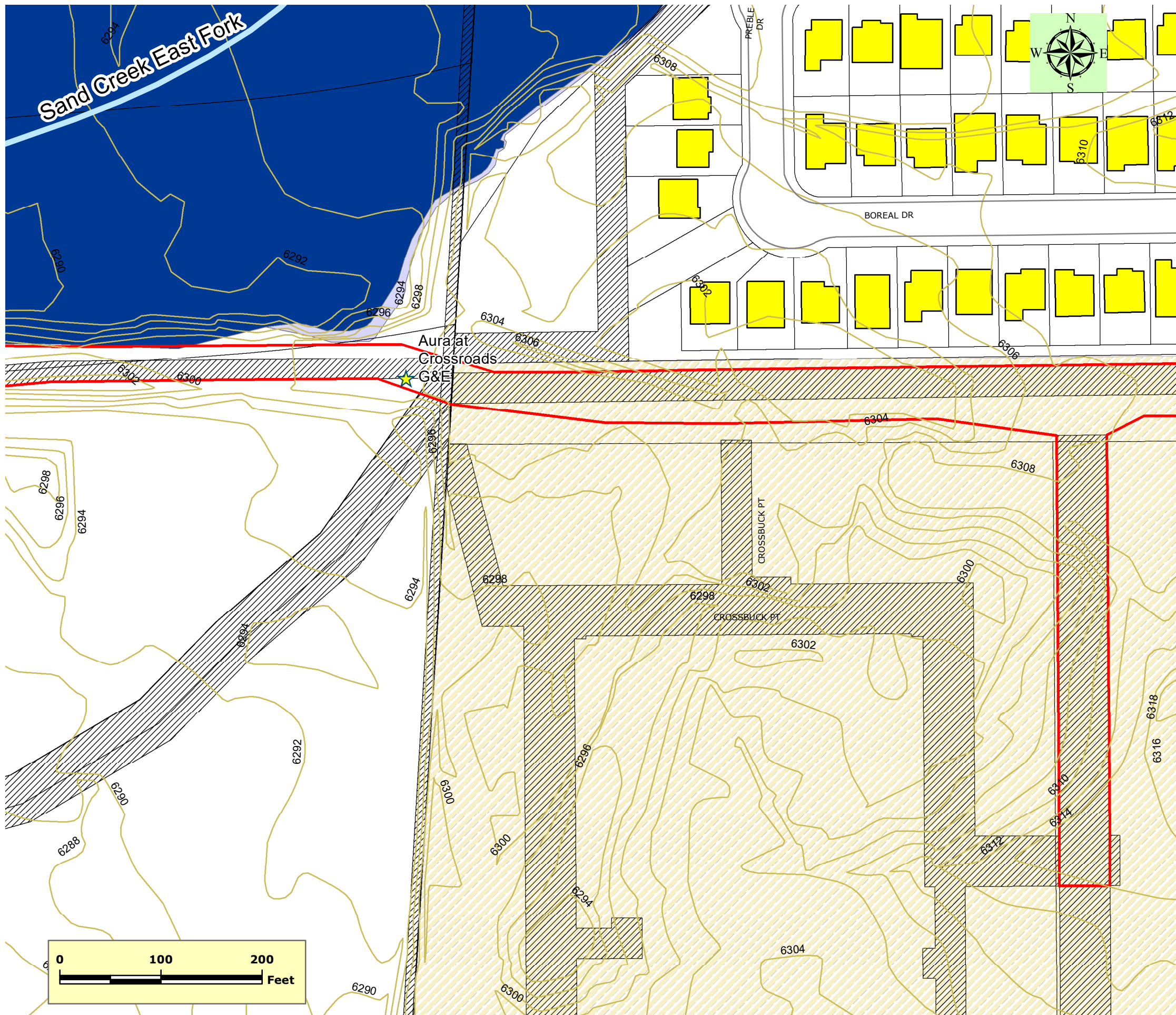
- Legend:**
- Streets
  - Stormwater Inlets
  - Construction Project Location
  - Existing Contours (2ft Intervals)
  - Boundary of Construction Project
  - Crossroads GEC Plan Area
  - Property Boundaries
  - Utility Easements
  - 10 Year FEMA Flood Zone
  - 100 Year FEMA Flood Zone
  - 500 Year FEMA Flood Zone

## SWMP/ESQCP SITE TOPOGRAPHY

### Aura at Crossroads G&E

<b>Project No:</b> PCD File No.:	<b>Figure Number 3 East</b>
<b>Prepared By:</b> J HOUGHTON	
<b>Date:</b> JUNE 2022	





**Colorado Springs Utilities**

*It's how we're all connected*

Environmental Services Department  
 121 South Tejon Street, Fourth Floor  
 Colorado Springs, Colorado 80903

- Legend:**
- Streets
  - Stormwater Inlets
  - Construction Project Location
  - Existing Contours (2ft Intervals)
  - Boundary of Construction Project
  - Crossroads GEC Plan Area
  - Property Boundaries
  - Utility Easements
  - 10 Year FEMA Flood Zone
  - 100 Year FEMA Flood Zone
  - 500 Year FEMA Flood Zone

**SWMP/ESQCP  
 SITE TOPOGRAPHY  
 Aura at Crossroads G&E**

**Project No:** PCD File No.:

**Prepared By:** J HOUGHTON

**Date:** JUNE 2022

**Figure  
 Number  
 3 Central**
















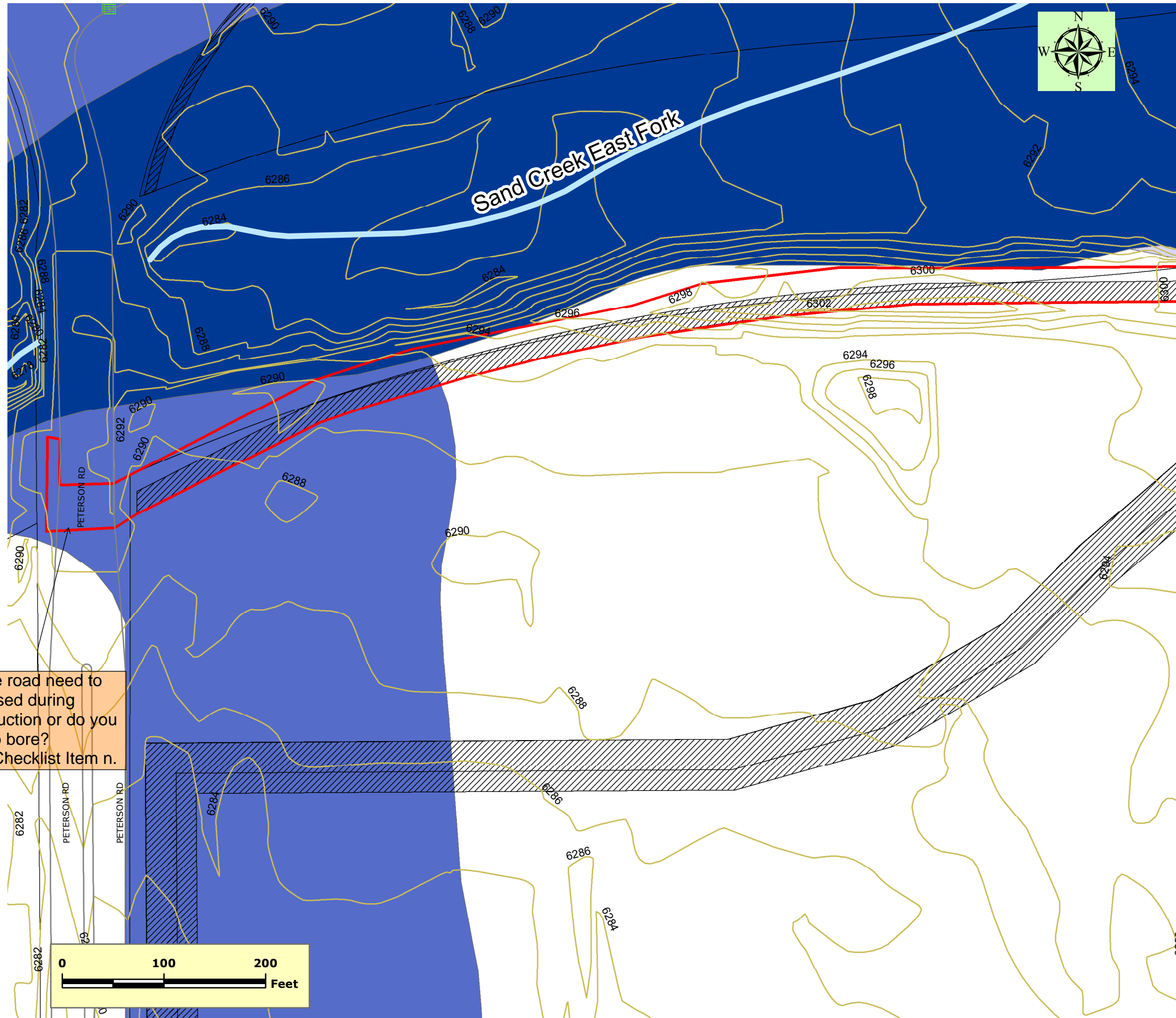
# Colorado Springs Utilities

*It's how we're all connected*

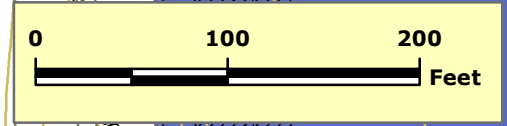
Environmental Services Department  
121 South Tejon Street, Fourth Floor  
Colorado Springs, Colorado 80903

### Legend:

-  Streets
-  Stormwater Inlets
-  Construction Project Location
-  Existing Contours (2ft Intervals)
-  Boundary of Construction Project
-  Crossroads GEC Plan Area
-  Property Boundaries
-  Utility Easements
-  10 Year FEMA Flood Zone
-  100 Year FEMA Flood Zone
-  500 Year FEMA Flood Zone



will the road need to be closed during construction or do you plan to bore?  
GEC Checklist Item n.



**SWMP/ESQCP  
SITE TOPOGRAPHY**

**Aura at Crossroads G&E**

<b>Project No:</b> PCD File No.:	<b>Figure Number 3 West</b>
<b>Prepared By:</b> J HOUGHTON	
<b>Date:</b> JUNE 2022	

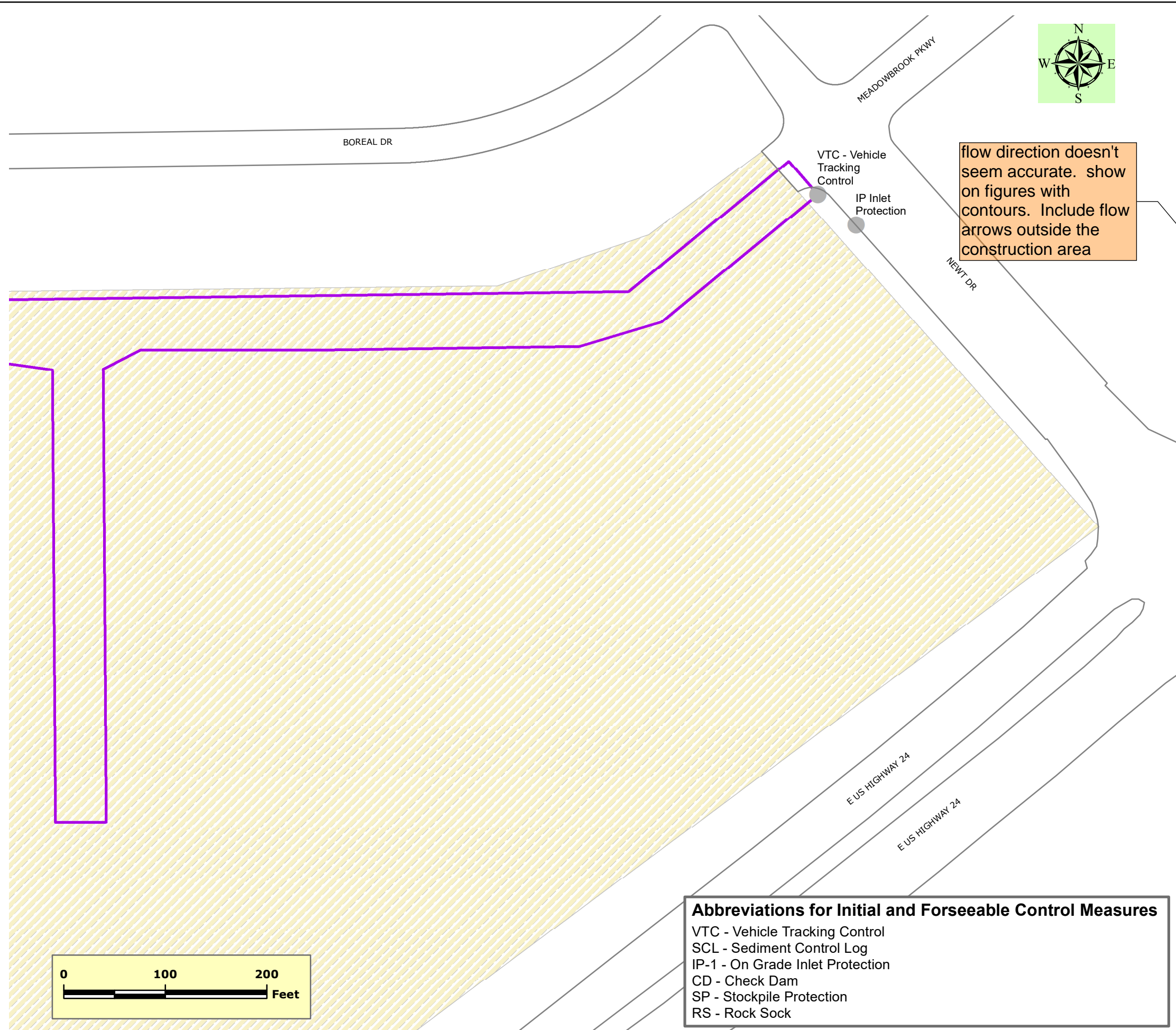




# Colorado Springs Utilities

*It's how we're all connected*

Environmental Services Department  
121 South Tejon Street, Fourth Floor  
Colorado Springs, Colorado 80903



flow direction doesn't seem accurate. show on figures with contours. Include flow arrows outside the construction area

Please note that it is already installed

What are these in reference to?

Label all proposed temporary construction BMPs by phase of implementation (initial, interim, final)

- Legend:**
- Streets
  - Stormwater Inlets
  - Control Measures - Is Action Needed?
    - Install Before Disturbance Begins
    - N/A - Owned and Maintained by Others
    - No
    - Yes
  - Approximate Surface Flow Direction
  - Pollutant Source - Present?
    - No
    - Yes
  - Disturbance Area - Current Status
    - Construction
    - Finally Stabilized
    - Not Started
    - Other
    - Restoration / Stabilization
  - Crossroads GEC Plan Area
  - Waterway\_Buffer50ft

- Notes:**
- Specific locations of staging areas, stockpiles, and any other material storage will be determined by site crew. These locations, and location of accompanying stockpile protection control measures (rock socks or sediment control logs) will be marked and updated on this plan throughout construction. Due to the nature of the project, it is expected that some or all of these items may be located in several areas and may be moved daily.
  - Once construction begins, if additional Control Measures are needed, locations should be identified on the inspection report map updates.
  - Street sweeping will be performed as needed. Areas in need will be marked on this map.
  - There will be no concrete or asphalt batch plants on site.
  - All construction vehicles limited to identified disturbance area to protect adjacent areas.

**Abbreviations for Initial and Forseeable Control Measures**

VTC - Vehicle Tracking Control  
 SCL - Sediment Control Log  
 IP-1 - On Grade Inlet Protection  
 CD - Check Dam  
 SP - Stockpile Protection  
 RS - Rock Sock

## GEC Plan PLANNED CONTROL MEASURES

### Aura at Crossroads G&E

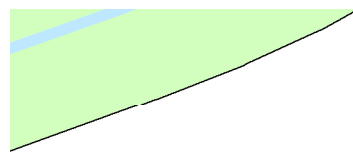
**Project No:** PCD File No.:

**Prepared By:** J HOUGHTON

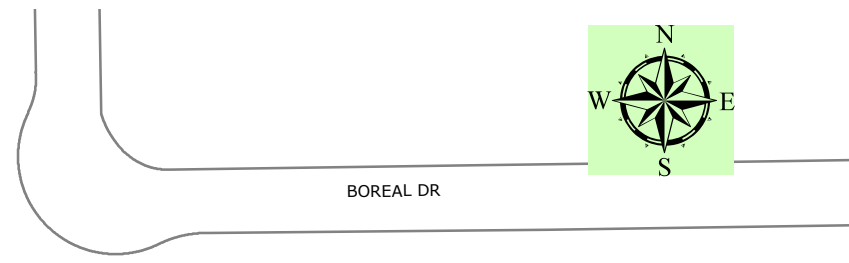
**Date:** JUNE 2022

**Figure Number**  
**4 East**





show limits



# Colorado Springs Utilities

*It's how we're all connected*

Environmental Services Department  
121 South Tejon Street, Fourth Floor  
Colorado Springs, Colorado 80903

SCL -  
Perimeter  
Protection

← 1.5%

IP Inlet  
Protection

show the limits of  
silt fence

SF Perimeter  
Protection

CROSSBUCK PT

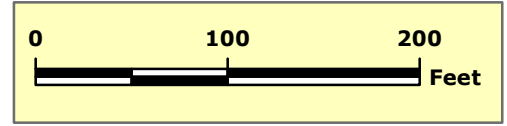
CROSSBUCK PT

### Legend:

- Streets
- Stormwater Inlets
- Control Measures - Is Action Needed?
- Install Before Disturbance Begins
- N/A - Owned and Maintained by Others
- No
- Yes
- Approximate Surface Flow Direction
- Pollutant Source - Present?
- No
- Yes
- Disturbance Area - Current Status
- Construction
- Finally Stabilized
- Not Started
- Other
- Restoration / Stabilization
- Crossroads GEC Plan Area
- Waterway\_Buffer50ft

### Notes:

1. Specific locations of staging areas, stockpiles, and any other material storage will be determined by site crew. These locations, and location of accompanying stockpile protection control measures (rock socks or sediment control logs) will be marked and updated on this plan throughout construction. Due to the nature of the project, it is expected that some or all of these items may be located in several areas and may be moved daily.
2. Once construction begins, if additional Control Measures are needed, locations should be identified on the inspection report map updates.
3. Street sweeping will be performed as needed. Areas in need will be marked on this map.
4. There will be no concrete or asphalt batch plants on site.
5. All construction vehicles limited to identified disturbance area to protect adjacent areas.



### Abbreviations for Initial and Forseeable Control Measures

- VTC - Vehicle Tracking Control
- SCL - Sediment Control Log
- IP-1 - On Grade Inlet Protection
- CD - Check Dam
- SP - Stockpile Protection
- RS - Rock Sock

## GEC Plan PLANNED CONTROL MEASURES

### Aura at Crossroads G&E

<b>Project No:</b> PCD File No.:	<b>Figure Number</b> <b>4 Central</b>
<b>Prepared By:</b> J HOUGHTON	
<b>Date:</b> JUNE 2022	





# Colorado Springs Utilities

*It's how we're all connected*

Environmental Services Department  
121 South Tejon Street, Fourth Floor  
Colorado Springs, Colorado 80903

**Legend:**

- Streets
- ☐ Stormwater Inlets
- Control Measures - Is Action Needed?
- Install Before Disturbance Begins
- N/A - Owned and Maintained by Others
- No
- Yes
- Approximate Surface Flow Direction
- Pollutant Source - Present?
- No
- Yes
- Disturbance Area - Current Status
- Construction
- Finally Stabilized
- Not Started
- Other
- Restoration / Stabilization
- ☐ Crossroads GEC Plan Area
- ☐ Waterway\_Buffer50ft

**Notes:**

1. Specific locations of staging areas, stockpiles, and any other material storage will be determined by site crew. These locations, and location of accompanying stockpile protection control measures (rock socks or sediment control logs) will be marked and updated on this plan throughout construction. Due to the nature of the project, it is expected that some or all of these items may be located in several areas and may be moved daily.
2. Once construction begins, if additional Control Measures are needed, locations should be identified on the inspection report map updates.
3. Street sweeping will be performed as needed. Areas in need will be marked on this map.
4. There will be no concrete or asphalt batch plants on site
5. All construction vehicles limited to identified disturbance area to protect adjacent areas.

**GEC Plan  
PLANNED CONTROL MEASURES**

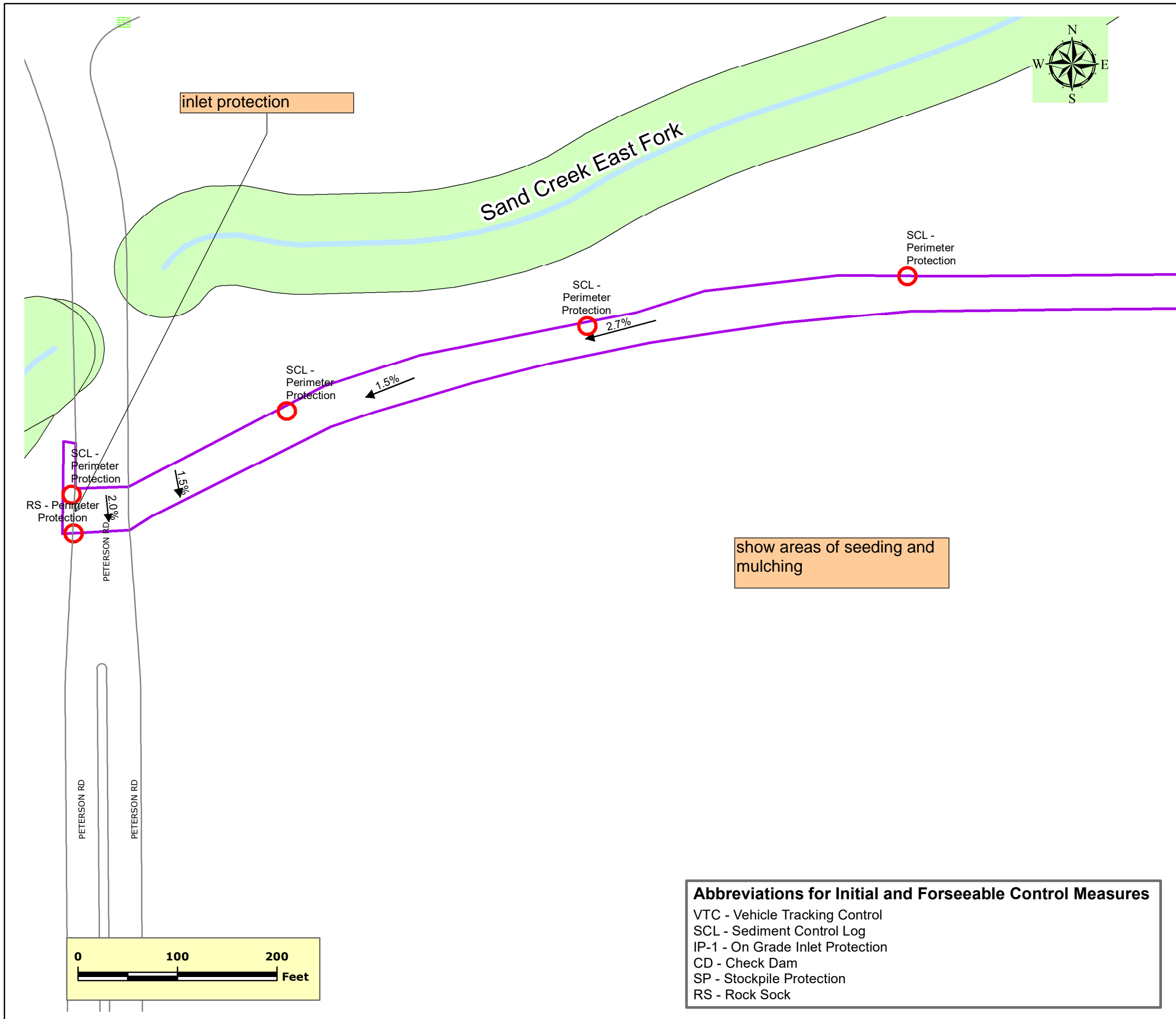
**Aura at Crossroads G&E**

<b>Project No:</b> PCD File No.:	<b>Figure Number</b> <b>4 West</b>
<b>Prepared By:</b> J HOUGHTON	
<b>Date:</b> JUNE 2022	

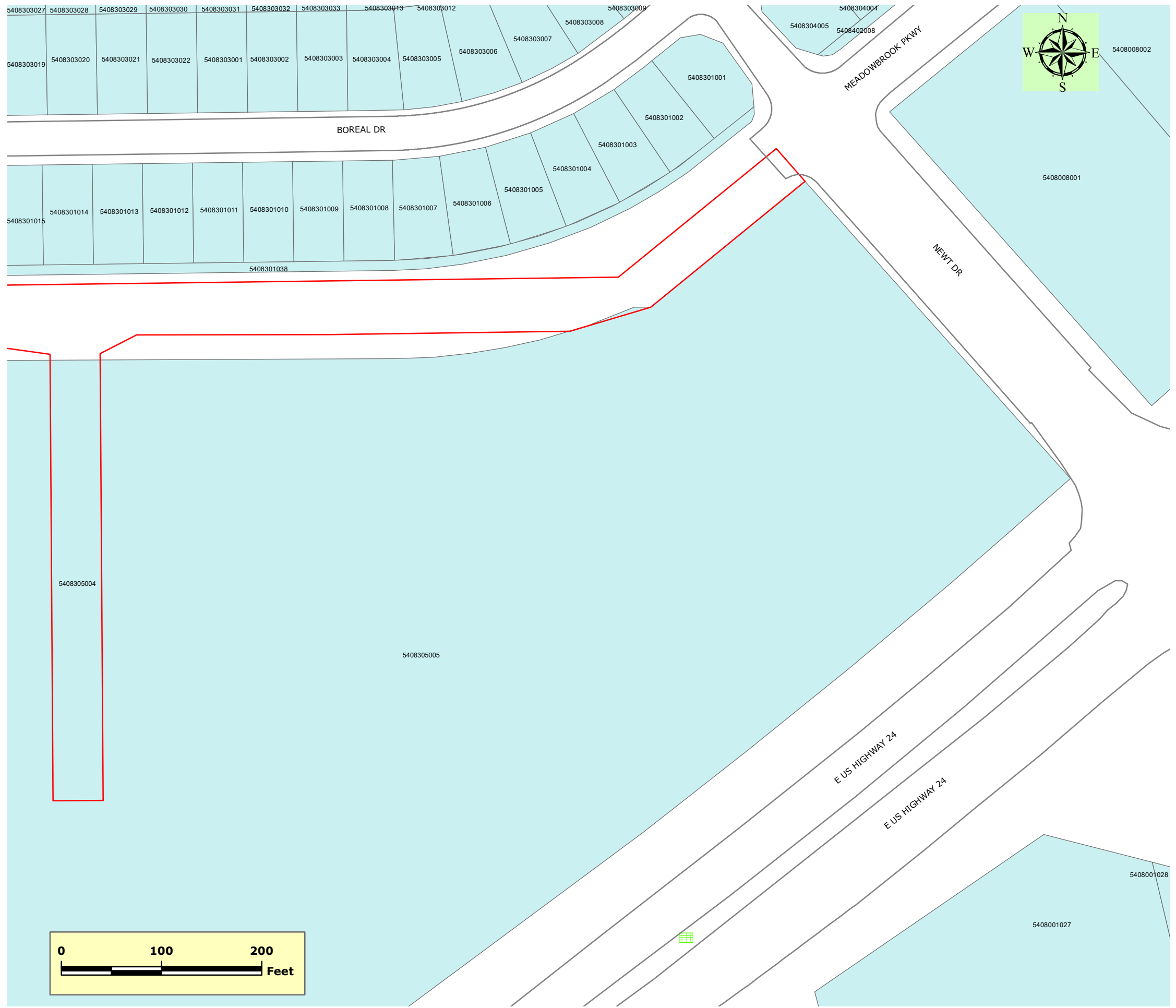
**Abbreviations for Initial and Forseeable Control Measures**

- VTC - Vehicle Tracking Control
- SCL - Sediment Control Log
- IP-1 - On Grade Inlet Protection
- CD - Check Dam
- SP - Stockpile Protection
- RS - Rock Sock

show areas of seeding and mulching





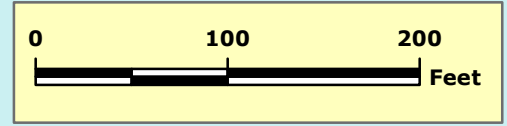


# Colorado Springs Utilities

*It's how we're all connected*

Environmental Services Department  
 121 South Tejon Street, Fourth Floor  
 Colorado Springs, Colorado 80903

- Legend:**
- Streets
  - Stormwater Inlets
  - Construction Project Location
  - Boundary of Planned Construction Disturbance
  - Existing and Proposed Property Lines



**GRADING AND EROSION CONTROL PLAN  
 TAX SCHEDULE NUMBER  
 OF ADJACENT PARCELS**

**Aura at Crossroads G&E**

**Project No:** PCD File No. :  
**Prepared By:** J HOUGHTON  
**Date:** JUNE 2022

**Figure  
 Number  
 5 East**



Sand Creek  
East Fork

5408006001

5408301035

5408301024

5408301023

5408301022

5408301033

5408301021

5408301020

5408301019

5408301018

5408301017

5408301016

5408301015

5408301014

5408301013

5408301012

5408301038

5408301037

5408301036

5408301035

5408301034

5408301033

5408301032

5408301031

PREBLE DR

BOREAL DR

CROSSBUCK PT

CROSSBUCK PT

5408305004

5408305001





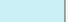
5408007001



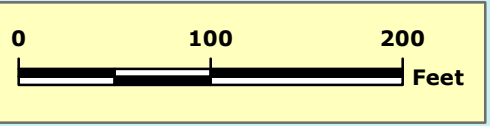
Colorado Springs Utilities

*It's how we're all connected*

Environmental Services Department  
121 South Tejon Street, Fourth Floor  
Colorado Springs, Colorado 80903

- Legend:**
-  Streets
  -  Stormwater Inlets
  -  Construction Project Location
  -  Boundary of Planned Construction Disturbance
  -  Existing and Proposed Property Lines

Aura at  
Crossroads  
G&E



**GRADING AND EROSION CONTROL PLAN  
TAX SCHEDULE NUMBER  
OF ADJACENT PARCELS**

**Aura at Crossroads G&E**

<b>Project No:</b>	PCD File No.:
<b>Prepared By:</b>	J HOUGHTON
<b>Date:</b>	JUNE 2022

**Figure  
Number  
5 Central**

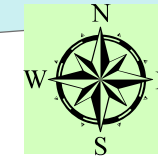









# Colorado Springs Utilities

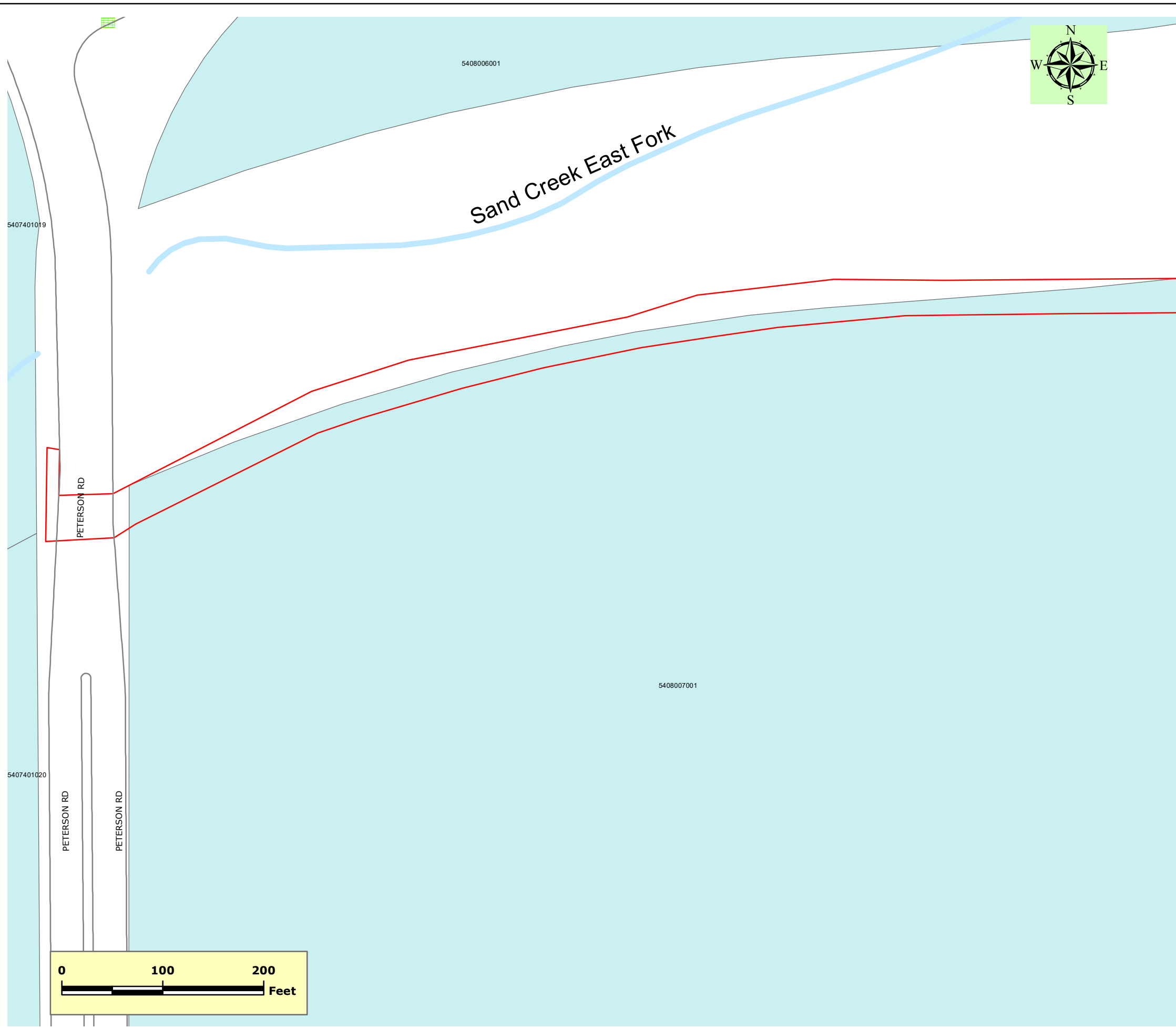
*It's how we're all connected*

Environmental Services Department  
121 South Tejon Street, Fourth Floor  
Colorado Springs, Colorado 80903



**Legend:**

-  Streets
-  Stormwater Inlets
-  Construction Project Location
-  Boundary of Planned Construction Disturbance
-  Existing and Proposed Property Lines



**GRADING AND EROSION CONTROL PLAN  
TAX SCHEDULE NUMBER  
OF ADJACENT PARCELS**

**Aura at Crossroads G&E**

<b>Project No:</b>	PCD File No.:
<b>Prepared By:</b>	J HOUGHTON
<b>Date:</b>	JUNE 2022

**Figure  
Number  
5 West**