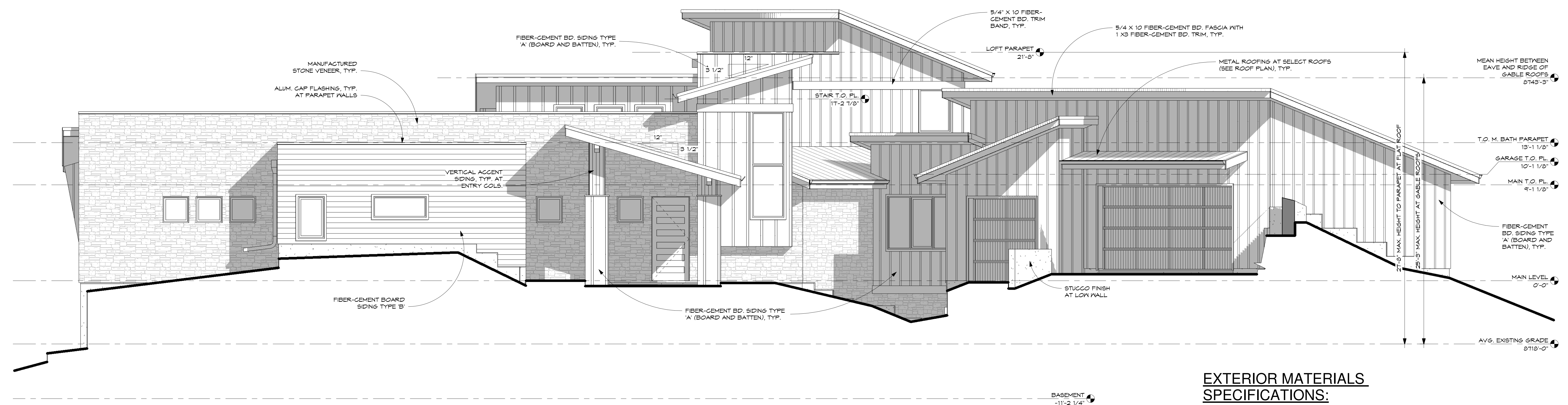


REVISIONS		
NO.	DATE	FOR

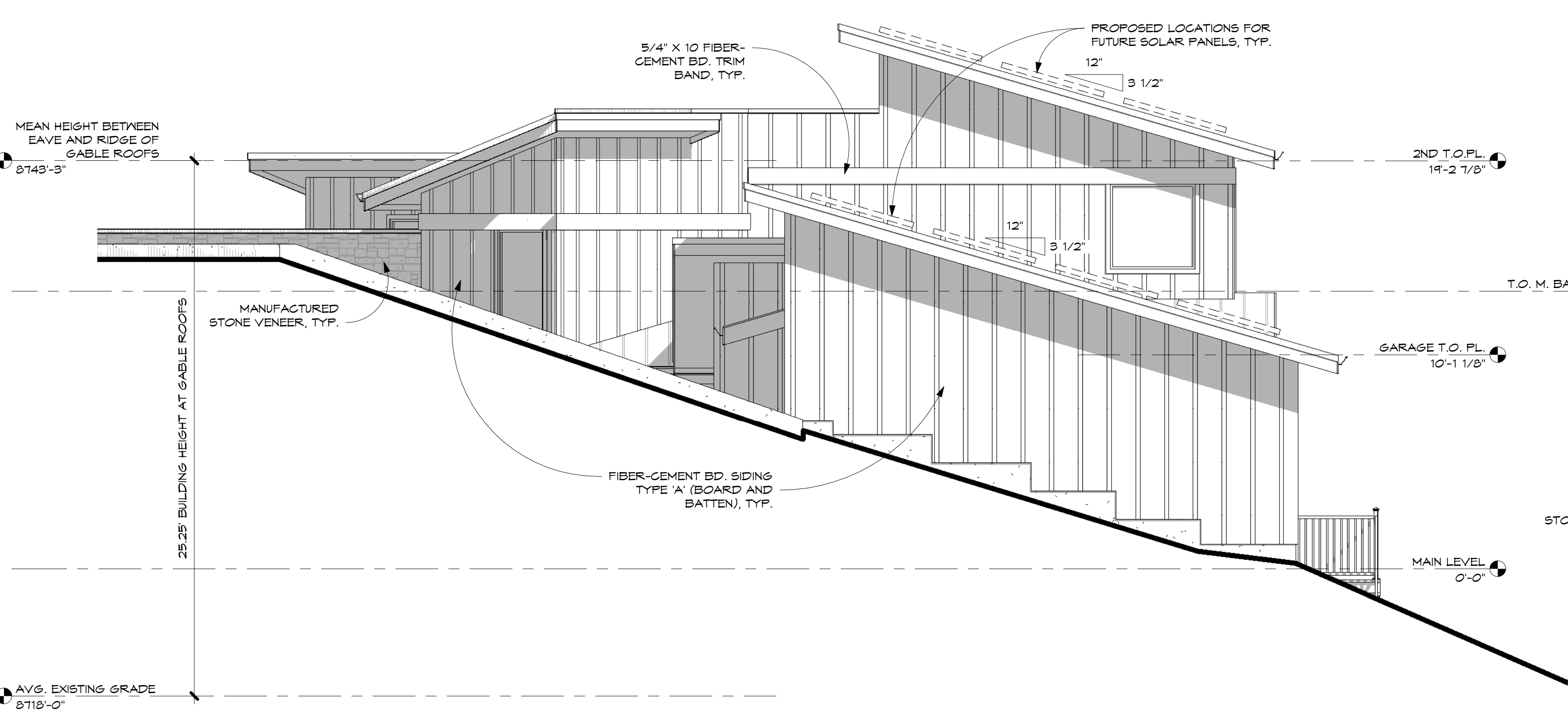
Conforti Architects LLC
 1430 North Franklin Street
 Colorado Springs, CO 80907
 ph: 719.633.9792
 fax: 719.273.2732
 www.confortiarchitects.com



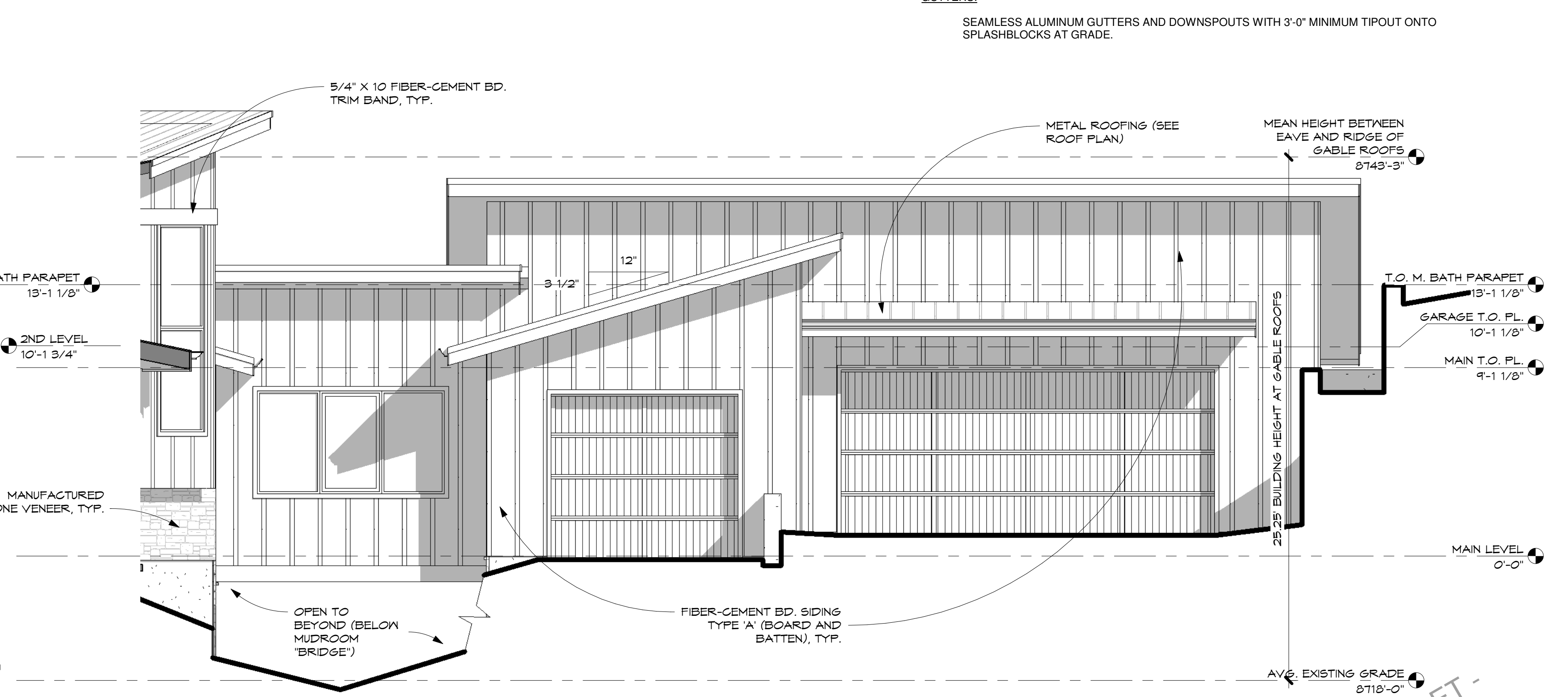
1 FRONT ELEVATION
 1/4" = 1'-0"

EXTERIOR MATERIALS SPECIFICATIONS:

- FIBER-CEMENT BOARD AND BATTEN SIDING (TYPE 'A' SIDING):**
 "HARDIE TRIM" RUSTIC GRAM BATTEN BOARDS (3/4" X 2-1/2") AT 16" O.C. INSTALLED OVER 3/16" THICK FIBER CEMENT BOARD "HARDIE PANEL" (SELECT CEDARMILL) COLOR: "PEARL GRAY" PREFINISHED, OR SIMILAR COLOR PRIMED AND PAINTED. INSTALL VERTICAL SIDING OVER WATER-RESISTIVE BARRIER OVER 1/2" WALL SHEATHING. INSTALL ALL MATERIALS PER MANUFACTURER'S WRITTEN INSTRUCTIONS AND SPECIFICATIONS.
- FIBER-CEMENT BOARD LAP SIDING (TYPE 'B' SIDING):**
 FIBER-CEMENT BOARD, HARDIE ARTISAN SIDING, V-GROOVE, SMOOTH, 625" THICK, 8.25" WIDTH, COLOR: "IRON GRAY" PREFINISHED, OR SIMILAR COLOR PRIMED AND PAINTED. INSTALL OVER WATER-RESISTIVE BARRIER OVER 1/2" WALL SHEATHING. INSTALL ALL MATERIALS PER MANUFACTURER'S WRITTEN INSTRUCTIONS AND SPECIFICATIONS.
- STONE VENEER:**
 STONE VENEER TO BE CONCRETE MANUFACTURED STONE VENEER APPLIED OVER MORTAR BED OVER CORROSION-RESISTANT WIRE MESH OR METAL LATH (PER STONE MANUFACTURER'S SPECIFICATIONS) OVER 2 LAYERS WATER-RESISTIVE BARRIER (GRADE D BUILDING PAPER OR EQUIVALENT) OVER 1/2" WALL SHEATHING. INSTALL PER MANUFACTURER'S SPECIFICATIONS.
- STUCCO:**
 AT CONCRETE WALLS:
 ACRYLIC STUCCO FINISH WITH LIGHT SAND TEXTURE OVER PRIMER OVER CEMENT BASED STUCCO BROWN SCRATCH COAT OVER PROPERLY PREPARED MASONRY OR CONCRETE SURFACES. INSTALL PER MANUFACTURER'S WRITTEN INSTRUCTIONS AND SPECIFICATIONS.
- ASPHALT SHINGLE ROOFING:**
 ROOFING SHALL BE MIN. 240 LB. ASPHALT SHINGLES OVER MIN. 30 LB. ROOFING FELT OVER 1/2" ROOF SHEATHING. INSTALL PER MANUFACTURER'S SPECIFICATIONS.
- METAL ROOFING:**
 METAL ROOFING SHALL BE MIN. 24 GA. SNAP-LOCK STANDING SEAM METAL ROOFING OVER MIN. 30 LB. ROOFING FELT OVER 1/2" ROOF SHEATHING. INSTALL PER MANUFACTURER'S SPECIFICATIONS.
- WINDOW AND DOOR TRIM AT SIDING:**
 2 1/2" WIDE "HARDIE TRIM" FIBER CEMENT BOARD TRIM, SMOOTH, PRIMED AND PAINTED
CORNER TRIM AT TYPE 'A' SIDING ONLY (TYPE 'B' SIDING TO HAVE MITERED CORNERS):
 1 1/2" WIDE "HARDIE TRIM" FIBER CEMENT BOARD TRIM, SMOOTH, PRIMED AND PAINTED
- FASCIA:**
 5/4" X 10" FIBER CEMENT BD. WITH 1 X 4 FIBER CEMENT BD. TRIM. PRIME AND PAINT, TYP. INSTALL OVER 2 X SUB-FASCIA.
- GUTTERS:**
 SEAMLESS ALUMINUM GUTTERS AND DOWNSPOUTS WITH 3'-0" MINIMUM TIPOUT ONTO SPLASHBLOCKS AT GRADE.



3 GARAGE RIGHT SIDE ELEVATION
 1/4" = 1'-0"



2 GARAGE FRONT ELEVATION
 1/4" = 1'-0"

REVIEW SET
 NOT FOR
 CONSTRUCTION

ROSE RESIDENCE
 LOT M-165 ON EAGLE MOUNTAIN RD
 CHRYSTAL PARK SUBDIVISION
 EL PASO COUNTY, CO 80829

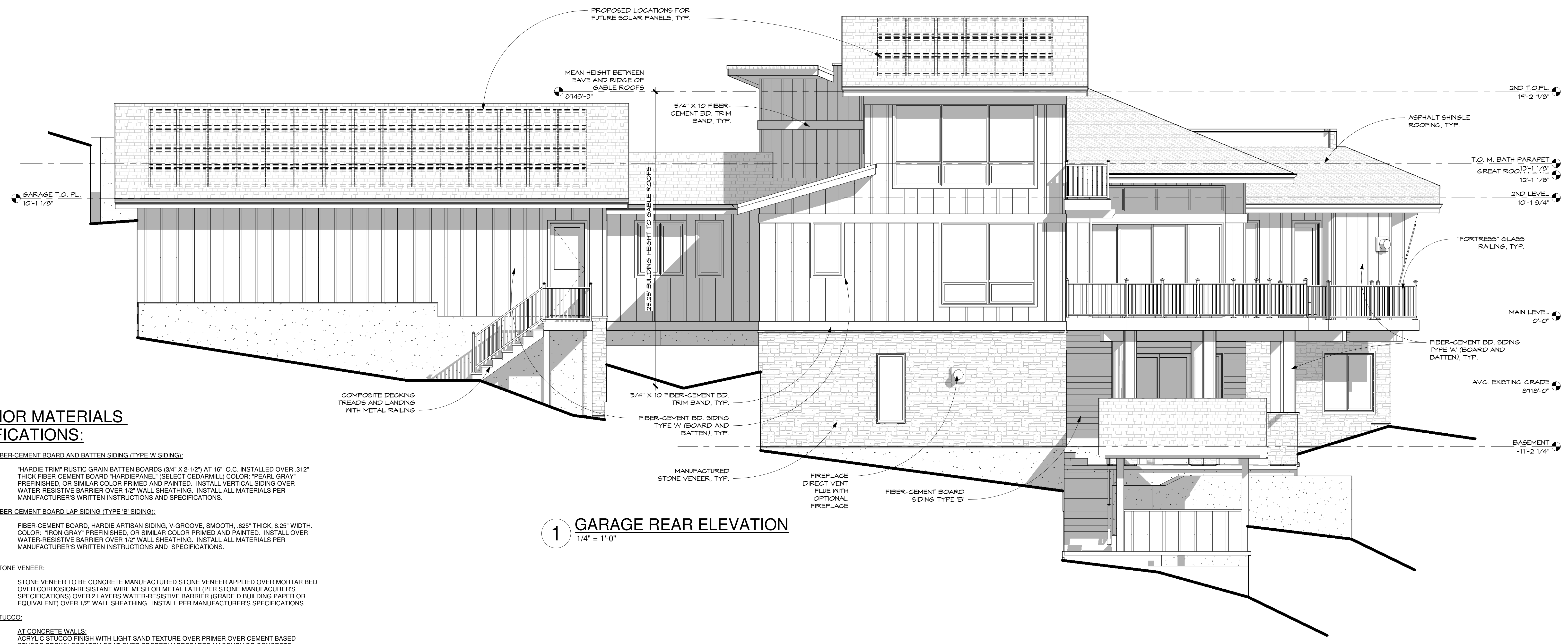
EXTERIOR ELEVATIONS

DATE: 10/18/23
 DRAWN BY: GC
 CHECKED BY: GC
 PROJECT NO.: 22006
 SHEET:

A9

REVISIONS		
DATE	FOR	

Conforti Architects LLC
 1430 North Franklin Street
 Colorado Springs, CO 80907
 www.confortiarchitects.com
 ph: 719.633.9792
 fax: 719.273.2732



1 GARAGE REAR ELEVATION
1/4" = 1'-0"

EXTERIOR MATERIALS SPECIFICATIONS:

- FIBER-CEMENT BOARD AND BATTEN SIDING (TYPE 'A' SIDING):**

"HARDIE TRIM" RUSTIC GRAIN BATTEN BOARDS (3/4" X 2-1/2") AT 16" O.C. INSTALLED OVER .312" THICK FIBER-CEMENT BOARD "HARDIE PANEL" (SELECT CEDARMILL) COLOR: "PEARL GRAY" (PREFINISHED, OR SIMILAR COLOR PRIMED AND PAINTED). INSTALL VERTICAL SIDING OVER WATER-RESISTIVE BARRIER OVER 1/2" WALL SHEATHING. INSTALL ALL MATERIALS PER MANUFACTURER'S WRITTEN INSTRUCTIONS AND SPECIFICATIONS.
- FIBER-CEMENT BOARD LAP SIDING (TYPE 'B' SIDING):**

FIBER-CEMENT BOARD, HARDIE ARTISAN SIDING, V-GROOVE, SMOOTH, .625" THICK, 8.25" WIDTH COLOR: "IRON GRAY" (PREFINISHED, OR SIMILAR COLOR PRIMED AND PAINTED). INSTALL OVER WATER-RESISTIVE BARRIER OVER 1/2" WALL SHEATHING. INSTALL ALL MATERIALS PER MANUFACTURER'S WRITTEN INSTRUCTIONS AND SPECIFICATIONS.
- STONE VENEER:**

STONE VENEER TO BE CONCRETE MANUFACTURED STONE VENEER APPLIED OVER MORTAR BED OVER CORROSION-RESISTANT WIRE MESH OR METAL LATH (PER STONE MANUFACTURER'S SPECIFICATIONS) OVER 2 LAYERS WATER-RESISTIVE BARRIER (GRADE D BUILDING PAPER OR EQUIVALENT) OVER 1/2" WALL SHEATHING. INSTALL PER MANUFACTURER'S SPECIFICATIONS.
- STUCCO:**

AT CONCRETE WALLS:
ACRYLIC STUCCO FINISH WITH LIGHT SAND TEXTURE OVER PRIMER OVER CEMENT BASED STUCCO BROWN SCRATCH COAT OVER PROPERLY PREPARED MASONRY OR CONCRETE SURFACES. INSTALL PER MANUFACTURER'S WRITTEN INSTRUCTIONS AND SPECIFICATIONS.
- ASPHALT SHINGLE ROOFING:**

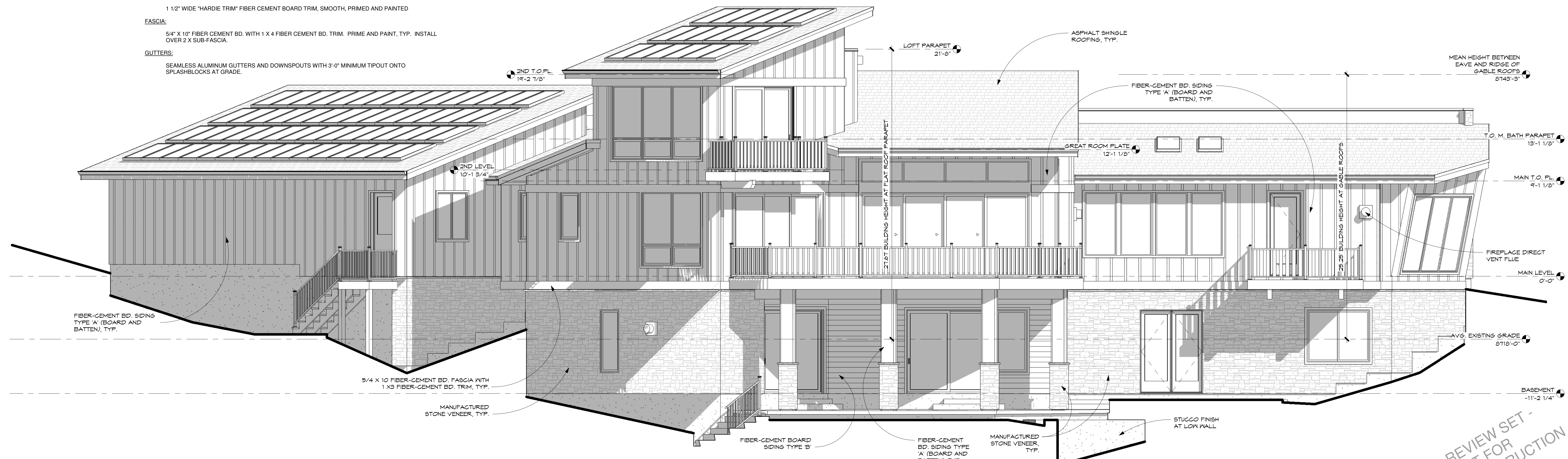
ROOFING SHALL BE MIN. 240 LB. ASPHALT SHINGLES OVER MIN. 30 LB. ROOFING FELT OVER 1/2" ROOF SHEATHING. INSTALL PER MANUFACTURER'S SPECIFICATIONS.
- METAL ROOFING:**

METAL ROOFING SHALL BE MIN. 24 GA. SNAP-LOCK STANDING SEAM METAL ROOFING OVER MIN. 30 LB. ROOFING FELT OVER 1/2" ROOF SHEATHING. INSTALL PER MANUFACTURER'S SPECIFICATIONS.
- WINDOW AND DOOR TRIM AT SIDING:**

2 1/2" WIDE "HARDIE TRIM" FIBER CEMENT BOARD TRIM, SMOOTH, PRIMED AND PAINTED
CORNER TRIM AT TYPE 'A' SIDING ONLY (TYPE 'B' SIDING TO HAVE MITERED CORNERS):
1 1/2" WIDE "HARDIE TRIM" FIBER CEMENT BOARD TRIM, SMOOTH, PRIMED AND PAINTED
- FASCIA:**

5/4" X 10" FIBER CEMENT BD. WITH 1 X 4 FIBER CEMENT BD. TRIM. PRIME AND PAINT, TYP. INSTALL OVER 2 X SUB-FASCIA.
- GUTTERS:**

SEAMLESS ALUMINUM GUTTERS AND DOWNSPOUTS WITH 3'-0" MINIMUM TIPOUT ONTO SPLASHBLOCKS AT GRADE.



2 REAR ELEVATION
1/4" = 1'-0"

REVIEW SET - NOT FOR CONSTRUCTION

ROSE RESIDENCE
 LOT M-165 ON EAGLE MOUNTAIN RD
 CHRYSAL PARK SUBDIVISION
 EL PASO COUNTY, CO 80829

EXTERIOR ELEVATIONS

DATE: 10/18/23
 DRAWN BY: GC
 CHECKED BY: GC
 PROJECT NO.: 22006
 SHEET:
A10