

DEVIATION REQUEST (Attach diagrams, figures, and other documentation to clarify request)

A deviation from the standards of or in Section **ECM section 3.3.3 Open Channel Design Standards** of the Engineering Criteria Manual (ECM) is requested for the Sand Creek Channel Design – Channel Access Spacing.

Identify the specific ECM standard which a deviation is requested:

Per ECM Section 3.3.3, Item K.1. Access to the bottom of the channel in the form of a vehicular ramp shall be provided at an interval of 500 feet.

State the reason for the requested deviation:

The Sand Creek Channel design has a minimum spacing of 300 feet and maximum spacing of 1,200 feet between access ramps to the bottom of the channel.

Explain the proposed alternative and compare to the ECM standards (May provide applicable regional or national standards used as basis):

A more "natural" channel design is being proposed for this reach within Sterling Ranch and there are only 8 drop structures, two roadway crossings, one inline flood control detention pond and two existing stock ponds in the 9,000 feet of channel being improved. Access ramps to the bottom of the channel are provided near each structure listed above.

In total, there are 24 total access ramps to the bottom of the channel as shown in table in Exhibit A.

To place a channel bottom access ramp every 500 feet is not feasible as it would add to the disturbance of the existing wetland as well as reduce the area available for wetland mitigation. Because of the natural channel design concept being proposed, maintenance activities requiring larger equipment are reduced and are focused around the 8 drop structures, 2 stock ponds, inline Pond W-3 and the plate arch culverts for Briargate Parkway and Sterling Ranch Road.

LIMITS OF CONSIDERATION

(At least one of the conditions listed below must be met for this deviation request to be considered.)

- The ECM standard is inapplicable to the particular situation.
- Topography, right-of-way, or other geographical conditions or impediments impose an undue hardship and an equivalent alternative that can accomplish the same design objective is available and does not compromise public safety or accessibility.
- A change to a standard is required to address a specific design or construction problem, and if not modified, the standard will impose an undue hardship on the applicant with little or no material benefit to the public.

Provide justification:

The typical function of an access ramp to the bottom of the channel is to provide a graded access point for maintenance of the channel structural improvements. Since this design is geared to a more natural approach to channel stabilization in order to limit existing wetland disturbance and to provide a broad flood terrace to provide opportunity to expand the wetlands throughout this reach, the total number of structural improvements is much less than in traditionally engineered channel designs. Additionally, once the wetlands are established in the broad flood terrace, maintenance requirements in the channel bottom is minimized.

If access to the channel bottom is required between the proposed access points it would only be for small equipment such as a skid steer or mini excavator. These pieces of equipment would be able to traverse along the edge of the floodplain terrace between the access points to perform the needed maintenance with minimal damage to existing or proposed wetlands.

CRITERIA FOR APPROVAL

Per ECM section 5.8.7 the request for a deviation may be considered if the request is **not based exclusively on financial considerations**. The deviation must not be detrimental to public safety or surrounding property. The applicant must include supporting information demonstrating compliance with **all of the following criteria**:

The deviation will achieve the intended result with a comparable or superior design and quality of improvement.

This request is not based on financial considerations. The primary reason for the reduced number of channel bottom access ramps is the low number of structural improvements.

The deviation will not adversely affect safety or operations.

The deviation will not adversely affect safety or operations.

The deviation will not adversely affect maintenance and its associated cost.

By using the recommended widths of the geomorphology study, a more stable channel thalweg is achieved which is more consistent with what has naturally occurred. Maintenance requirements should be minimal.

In a typical DBPS envisioned engineered channel, routine maintenance would focus on mowing of the bottom and side slopes and sedimentation or debris removal in the bottom of the channel. In the proposed natural design, bottom mowing and sedimentation removal is not recommended in order to preserve wetland vegetation. Occasional debris removal can be performed with small equipment such as a utility vehicle (UTV).

The deviation will not adversely affect aesthetic appearance.

The deviation does not affect aesthetic appearance.

The deviation meets the design intent and purpose of the ECM standards.

Yes, the deviation meets the design intent and purpose of the ECM standards and is a balance of the various ECM and other agency standards for natural channel planning and design.

The deviation meets the control measure requirements of Part I.E.3 and Part I.E.4 of the County's MS4 permit, as applicable.

Yes, the deviation meets the control measure requirements of Part I.E.3 and Part I.E.4 of the County's MS4 permit. As a streambed restoration project, it is exempted from MS4 water quality standards.

REVIEW AND RECOMMENDATION:

Approved by the ECM Administrator

This request has been determined to have met the criteria for approval. A deviation from Section _____ of the ECM is hereby granted based on the justification provided.

Γ

Γ

L

J

Denied by the ECM Administrator

This request has been determined not to have met criteria for approval. A deviation from Section _____ of the ECM is hereby denied.

Γ

Γ

L

J

ECM ADMINISTRATOR COMMENTS/CONDITIONS:

1.1. PURPOSE

The purpose of this resource is to provide a form for documenting the findings and decision by the ECM Administrator concerning a deviation request. The form is used to document the review and decision concerning a requested deviation. The request and decision concerning each deviation from a specific section of the ECM shall be recorded on a separate form.

1.2. BACKGROUND

A deviation is a critical aspect of the review process and needs to be documented to ensure that the deviations granted are applied to a specific development application in conformance with the criteria for approval and that the action is documented as such requests can point to potential needed revisions to the ECM.

1.3. APPLICABLE STATUTES AND REGULATIONS

Section 5.8 of the ECM establishes a mechanism whereby an engineering design standard can be modified when if strictly adhered to, would cause unnecessary hardship or unsafe design because of topographical or other conditions particular to the site, and that a departure may be made without destroying the intent of such provision.

1.4. APPLICABILITY

All provisions of the ECM are subject to deviation by the ECM Administrator provided that one of the following conditions is met:

- The ECM standard is inapplicable to a particular situation.
- Topography, right-of-way, or other geographical conditions or impediments impose an undue hardship on the applicant, and an equivalent alternative that can accomplish the same design objective is available and does not compromise public safety or accessibility.
- A change to a standard is required to address a specific design or construction problem, and if not modified, the standard will impose an undue hardship on the applicant with little or no material benefit to the public.

1.5. TECHNICAL GUIDANCE

The review shall ensure all criteria for approval are adequately considered and that justification for the deviation is properly documented.

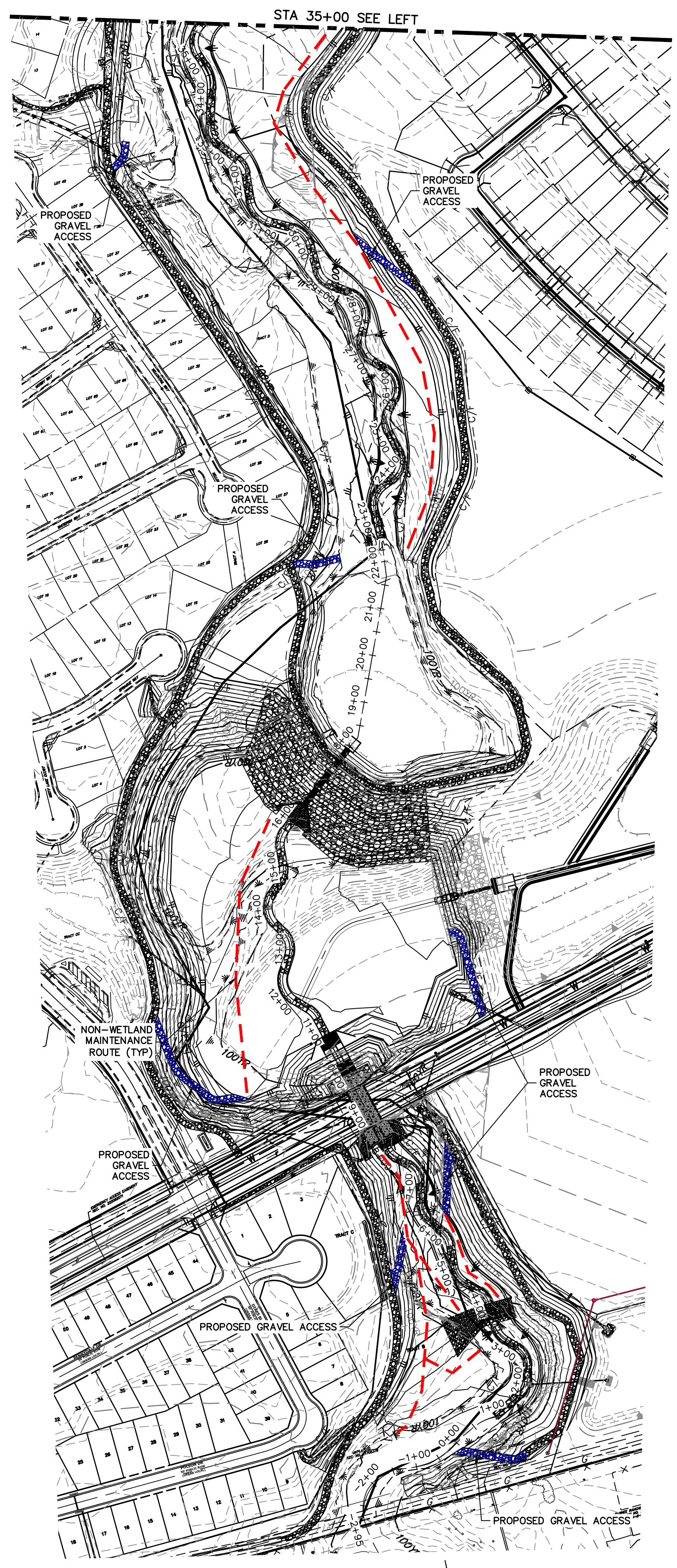
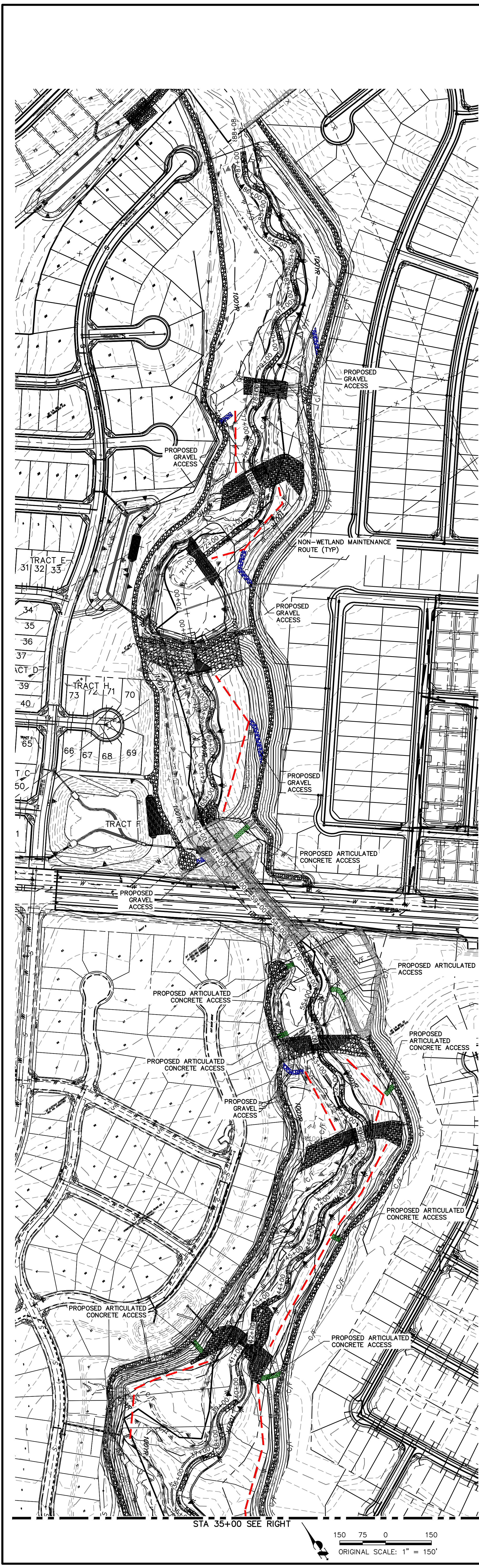
1.6. LIMITS OF APPROVAL

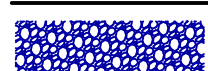


Whether a request for deviation is approved as proposed or with conditions, the approval is for project-specific use and shall not constitute a precedent or general deviation from these Standards.

1.7. REVIEW FEES

A Deviation Review Fee shall be paid in full at the time of submission of a request for deviation. The fee for Deviation Review shall be as determined by resolution of the BoCC.

	West Side Access Point	East Side Access Point	Provides Access to:
	Low Flow Channel Station		
Reach 1	2+00	0+00	Bottom, GSB #1
	6+50	6+50	Bottom, GSB #1, GSB #2, Lower SR Road Culvert
Reach 2	10+50	12+00	Bottom, Upper SR Road Culvert and W-3 Outfall
	17+50	17+50	Bottom, SRMD Pond #1 Berm
	22+00		Bottom, Upper limits SRMD Pond #1
		29+00	Bottom
	34+00		Bottom
	40+50	40+50	Bottom, GSB #3
		46+50	Bottom, GSB #4
	52+50	51+50	Bottom, GSB #4, GSB #5
	54+50		Bottom, GSB #5
		55+50	Bottom, GSB #5, Lower BGP Culvert
	56+50		Bottom, GSB #5, Lower BGP Culvert
Reach 3	61+00	61+00	Bottom, Upper BGP Culvert
		66+00	Bottom
	68+50	68+50	Bottom, SRMD Pond #2
		72+50	Bottom, GSB #6, GSB #7
	78+50		Bottom, GSB #7
		81+00	Bottom, GSB #8



- LEGEND**
-  GRAVEL ACCESS
 -  ARTICULATED CONCRETE ACCESS
 -  NON-WETLAND MAINTENANCE ROUTE

CHANNEL ACCESS EXHIBIT
 SAND CREEK RESTORATION
 JOB NO. 25188.04
 10/19/23
 SHEET 1 OF 1



Centennial 303-740-9393 • Colorado Springs 719-593-2593
 Fort Collins 970-491-9888 • www.jrengineering.com

X:\2518804\Drawings\Presentations\2023\07-12 Sand Creek Access Exhibit.dwg, Layout1, 10/19/2023, 4:33:48 PM, VaughnD

Exhibit B
Legal Description

Recorded Plats West of Channel

Tract B, Sterling Ranch Filing No. 3

Tract D, Sterling Ranch Filing No. 1

See following pages for remaining West Side and East Side Channel
Easement descriptions.



PROPERTY DESCRIPTION

A PARCEL OF LAND BEING A PORTION OF THE SOUTHWEST QUARTER OF THE SOUTHWEST QUARTER OF SECTION 27, THE SOUTHEAST QUARTER OF SECTION 28, AND THE NORTHEAST QUARTER OF SECTION 33, ALL IN TOWNSHIP 12 SOUTH, RANGE 65 WEST OF THE 6TH PRINCIPAL MERIDIAN, COUNTY OF EL PASO, STATE OF COLORADO, BEING MORE PARTICULARLY DESCRIBED AS FOLLOWS:

BASIS OF BEARINGS: THE SOUTH LINE OF THE SOUTHWEST QUARTER OF SECTION 34, TOWNSHIP 12 SOUTH, RANGE 65 WEST OF THE 6TH PRINCIPAL MERIDIAN, AS MONUMENTED AT THE SOUTHWEST CORNER OF SAID SOUTHWEST QUARTER BY A 2-1/2" ALUMINUM CAP STAMPED "LS 11624" AND AT THE SOUTHEAST CORNER OF SAID SOUTHWEST QUARTER BY A 2-1/2" ALUMINUM CAP STAMPED "LS 11624", SAID LINE BEARS N89°14'14"E.

COMMENCING AT THE SOUTHWEST CORNER OF THE SOUTHWEST QUARTER OF SECTION 34, TOWNSHIP 12 SOUTH, RANGE 65 WEST OF THE 6TH P.M.;

THENCE N14°51'14"W A DISTANCE OF 4,859.83 FEET, TO THE POINT OF BEGINNING;

THENCE THE FOLLOWING THIRTY-EIGHT (38) COURSES:

1. N13°09'32"E A DISTANCE OF 352.52 FEET;
2. N39°33'48"E A DISTANCE OF 127.36 FEET;
3. N24°46'24"E A DISTANCE OF 78.34 FEET;
4. N39°32'55"E A DISTANCE OF 134.35 FEET;
5. N26°11'26"E A DISTANCE OF 56.58 FEET, TO A POINT OF CURVE;
6. ON THE ARC OF A CURVE TO THE LEFT, HAVING A RADIUS OF 6.00 FEET, A CENTRAL ANGLE OF 12°20'46" AND AN ARC LENGTH OF 1.29 FEET, TO A POINT OF TANGENT;
7. N13°50'40"E A DISTANCE OF 4.78 FEET, TO A POINT OF CURVE;
8. ON THE ARC OF A CURVE TO THE RIGHT, HAVING A RADIUS OF 360.00 FEET, A CENTRAL ANGLE OF 77°36'15" AND AN ARC LENGTH OF 487.60 FEET, TO A POINT OF REVERSE CURVE;
9. ON THE ARC OF A CURVE TO THE LEFT, HAVING A RADIUS OF 210.00 FEET, A CENTRAL ANGLE OF 44°20'11" AND AN ARC LENGTH OF 162.50 FEET, TO A POINT TANGENT;
10. N47°06'44"E A DISTANCE OF 42.79 FEET, TO A POINT OF CURVE;
11. ON THE ARC OF A CURVE TO THE RIGHT, HAVING A RADIUS OF 61.00 FEET, A CENTRAL ANGLE OF 18°09'34" AND AN ARC LENGTH OF 19.33 FEET, TO A POINT OF TANGENT;

12. N65°16'17"E A DISTANCE OF 68.61 FEET, TO A POINT OF CURVE;
13. ON THE ARC OF A CURVE TO THE LEFT, HAVING A RADIUS OF 39.00 FEET, A CENTRAL ANGLE OF 66°32'02" AND AN ARC LENGTH OF 45.29 FEET, TO A POINT OF TANGENT;
14. N01°15'45"W A DISTANCE OF 72.65 FEET, TO A POINT OF CURVE;
15. ON THE ARC OF A CURVE TO THE RIGHT, HAVING A RADIUS OF 92.50 FEET, A CENTRAL ANGLE OF 49°17'46" AND AN ARC LENGTH OF 79.59 FEET, TO A POINT OF TANGENT;
16. N48°02'01"E A DISTANCE OF 109.77 FEET, TO A POINT OF CURVE;
17. ON THE ARC OF A CURVE TO THE LEFT, HAVING A RADIUS OF 37.50 FEET, A CENTRAL ANGLE OF 10°21'41" AND AN ARC LENGTH OF 6.78 FEET, TO A POINT OF TANGENT;
18. N37°40'20"E A DISTANCE OF 20.53 FEET, TO A POINT OF CURVE;
19. ON THE ARC OF A CURVE TO THE RIGHT, HAVING A RADIUS OF 62.50 FEET, A CENTRAL ANGLE OF 20°49'08" AND AN ARC LENGTH OF 22.71 FEET, TO A POINT OF TANGENT;
20. N58°29'29"E A DISTANCE OF 21.44 FEET, TO A POINT OF CURVE;
21. ON THE ARC OF A CURVE TO THE LEFT, HAVING A RADIUS OF 372.00 FEET, A CENTRAL ANGLE OF 28°48'24" AND AN ARC LENGTH OF 187.03 FEET, TO A POINT OF TANGENT;
22. N29°41'04"E A DISTANCE OF 273.67 FEET, TO A POINT OF CURVE;
23. ON THE ARC OF A CURVE TO THE LEFT, HAVING A RADIUS OF 808.00 FEET, A CENTRAL ANGLE OF 24°35'20" AND AN ARC LENGTH OF 346.76 FEET, TO A POINT OF COMPOUND CURVE;
24. ON THE ARC OF A CURVE TO THE LEFT, HAVING A RADIUS OF 37.50 FEET, A CENTRAL ANGLE OF 35°58'11" AND AN ARC LENGTH OF 23.54 FEET, TO A POINT TANGENT;
25. N30°52'26"W A DISTANCE OF 86.69 FEET, TO A POINT OF CURVE;
26. ON THE ARC OF A CURVE TO THE RIGHT, HAVING A RADIUS OF 112.50 FEET, A CENTRAL ANGLE OF 22°05'57" AND AN ARC LENGTH OF 43.39 FEET, TO A POINT OF TANGENT;
27. N08°46'30"W A DISTANCE OF 175.18 FEET, TO A POINT OF CURVE;
28. ON THE ARC OF A CURVE TO THE RIGHT, HAVING A RADIUS OF 120.00 FEET, A CENTRAL ANGLE OF 07°55'00" AND AN ARC LENGTH OF 16.58 FEET, TO A POINT OF TANGENT;
29. N00°51'29"W A DISTANCE OF 199.03 FEET, TO A POINT OF CURVE;
30. ON THE ARC OF A CURVE TO THE LEFT, HAVING A RADIUS OF 87.50 FEET, A CENTRAL ANGLE OF 17°51'03" AND AN ARC LENGTH OF 27.26 FEET, TO A POINT OF TANGENT;
31. N18°42'32"W A DISTANCE OF 80.54 FEET, TO A POINT OF CURVE;
32. ON THE ARC OF A CURVE TO THE RIGHT, HAVING A RADIUS OF 112.50 FEET, A CENTRAL ANGLE OF 44°32'40" AND AN ARC LENGTH OF 87.46 FEET, TO A POINT OF TANGENT;

33. N25°50'08"E A DISTANCE OF 88.95 FEET, TO A POINT OF CURVE;
34. ON THE ARC OF A CURVE TO THE LEFT, HAVING A RADIUS OF 75.00 FEET, A CENTRAL ANGLE OF 85°51'02" AND AN ARC LENGTH OF 112.38 FEET, TO A POINT OF REVERSE CURVE;
35. ON THE ARC OF A CURVE TO THE RIGHT, HAVING A RADIUS OF 23.00 FEET, A CENTRAL ANGLE OF 91°10'38" AND AN ARC LENGTH OF 36.60 FEET, TO A POINT OF TANGENT;
36. N31°09'44"E A DISTANCE OF 11.45 FEET;
37. N01°04'03"W A DISTANCE OF 143.40 FEET;
38. N72°19'10"W A DISTANCE OF 70.69 FEET, TO A POINT ON THE NORTH LINE OF THE NORTHEAST QUARTER OF THE SOUTHEAST QUARTER OF SECTION 28, TOWNSHIP 12 SOUTH, RANGE 65 WEST OF THE 6TH P.M.;

THENCE ON SAID NORTH LINE, N89°08'31"E A DISTANCE OF 207.97 FEET, TO THE NORTHEAST CORNER OF SAID NORTHEAST QUARTER OF THE SOUTHEAST QUARTER OF SECTION 28;

THENCE ON THE EAST LINE OF SAID NORTHEAST QUARTER OF THE SOUTHEAST QUARTER OF SECTION 28, S00°53'15"E A DISTANCE OF 1,316.84 FEET, TO THE NORTHWEST CORNER OF THE SOUTHWEST QUARTER OF THE SOUTHWEST QUARTER OF SECTION 27, TOWNSHIP 12 SOUTH, RANGE 65 WEST OF THE 6TH P.M.;

THENCE ON THE NORTH LINE OF SAID SOUTHWEST QUARTER OF THE SOUTHWEST QUARTER OF SECTION 27, N87°34'53"E A DISTANCE OF 73.60 FEET;

THENCE DEPARTING SAID NORTH LINE, THE FOLLOWING TWENTY-SIX (26) COURSES:

1. S04°00'08"W A DISTANCE OF 38.86 FEET;
2. S23°30'33"W A DISTANCE OF 96.02 FEET;
3. S17°58'09"W A DISTANCE OF 105.84 FEET;
4. S07°20'33"W A DISTANCE OF 248.45 FEET;
5. S27°44'47"W A DISTANCE OF 82.16 FEET;
6. S51°16'10"W A DISTANCE OF 361.44 FEET;
7. S29°35'35"W A DISTANCE OF 198.68 FEET;
8. S56°06'51"W A DISTANCE OF 68.55 FEET;
9. S51°10'06"W A DISTANCE OF 86.23 FEET;
10. S82°29'37"W A DISTANCE OF 85.63 FEET;
11. N82°52'49"W A DISTANCE OF 82.74 FEET;
12. N63°10'02"W A DISTANCE OF 59.72 FEET, TO A POINT OF NON-TANGENT CURVE;

13. ON THE ARC OF A CURVE TO THE LEFT WHOSE CENTER BEARS S52°33'19"W, HAVING A RADIUS OF 43.53 FEET, A CENTRAL ANGLE OF 66°07'59" AND AN ARC LENGTH OF 50.25 FEET, TO A POINT OF REVERSE CURVE;
14. ON THE ARC OF A CURVE TO THE RIGHT, HAVING A RADIUS OF 208.41 FEET, A CENTRAL ANGLE OF 21°27'48" AND AN ARC LENGTH OF 78.07 FEET, TO A POINT REVERSE CURVE;
15. ON THE ARC OF A CURVE TO THE LEFT, HAVING A RADIUS OF 85.46 FEET, A CENTRAL ANGLE OF 85°24'40" AND AN ARC LENGTH OF 127.39 FEET, TO A POINT TANGENT;
16. S12°28'27"W A DISTANCE OF 90.70 FEET;
17. S87°04'53"W A DISTANCE OF 91.55 FEET;
18. S01°04'54"W A DISTANCE OF 49.42 FEET;
19. S27°12'58"W A DISTANCE OF 75.48 FEET;
20. S12°38'34"W A DISTANCE OF 55.41 FEET;
21. S19°42'21"W A DISTANCE OF 185.56 FEET;
22. S32°15'45"W A DISTANCE OF 71.66 FEET;
23. S41°47'19"W A DISTANCE OF 88.37 FEET;
24. S14°57'52"W A DISTANCE OF 155.36 FEET;
25. S03°04'57"E A DISTANCE OF 108.15 FEET;
26. N78°59'19"W A DISTANCE OF 158.05 FEET, TO THE POINT OF BEGINNING.

CONTAINING A CALCULATED AREA OF 591,216 SQUARE FEET OR 13.5725 ACRES.

PROPERTY DESCRIPTION STATEMENT

I, JARROD ADAMS, A PROFESSIONAL LAND SURVEYOR LICENSED IN THE STATE OF COLORADO, DO HEREBY STATE THAT THE ABOVE PROPERTY DESCRIPTION AND ATTACHED EXHIBIT WERE PREPARED UNDER MY RESPONSIBLE CHARGE, AND ON THE BASIS OF MY KNOWLEDGE, INFORMATION AND BELIEF, ARE CORRECT.

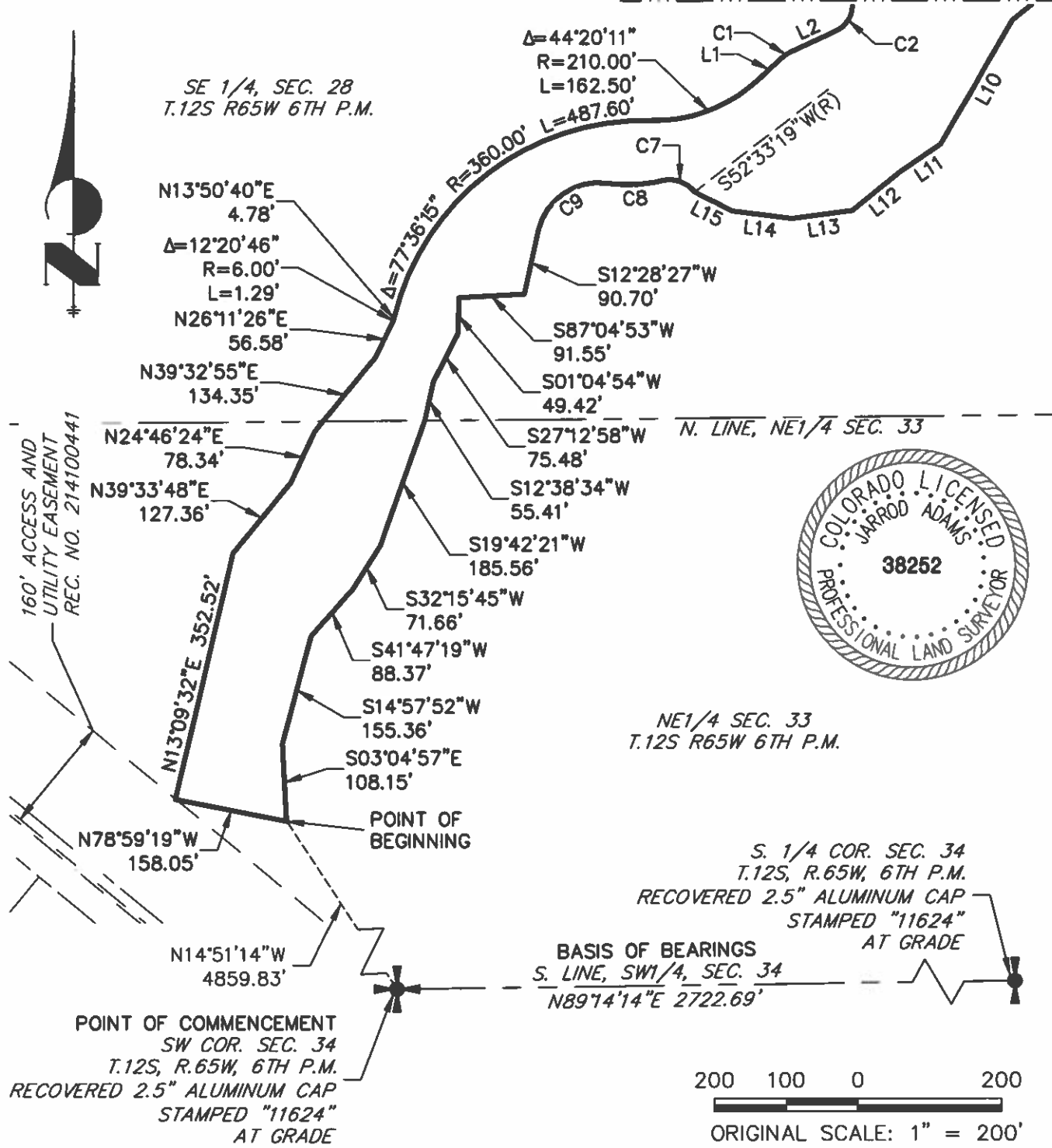
JARROD ADAMS, PROFESSIONAL LAND SURVEYOR
 COLORADO NO. 38252
 FOR AND ON BEHALF OF JR ENGINEERING, LLC



EXHIBIT

SEE SHEET 6

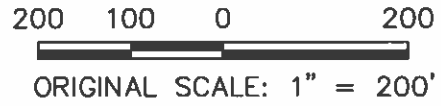
SE 1/4, SEC. 28
T.12S R65W 6TH P.M.



NE 1/4 SEC. 33
T.12S R65W 6TH P.M.

S. 1/4 COR. SEC. 34
T.12S, R.65W, 6TH P.M.
RECOVERED 2.5" ALUMINUM CAP
STAMPED "11624"
AT GRADE

BASIS OF BEARINGS
S. LINE, SW 1/4, SEC. 34
N89°14'14"E 2722.69'



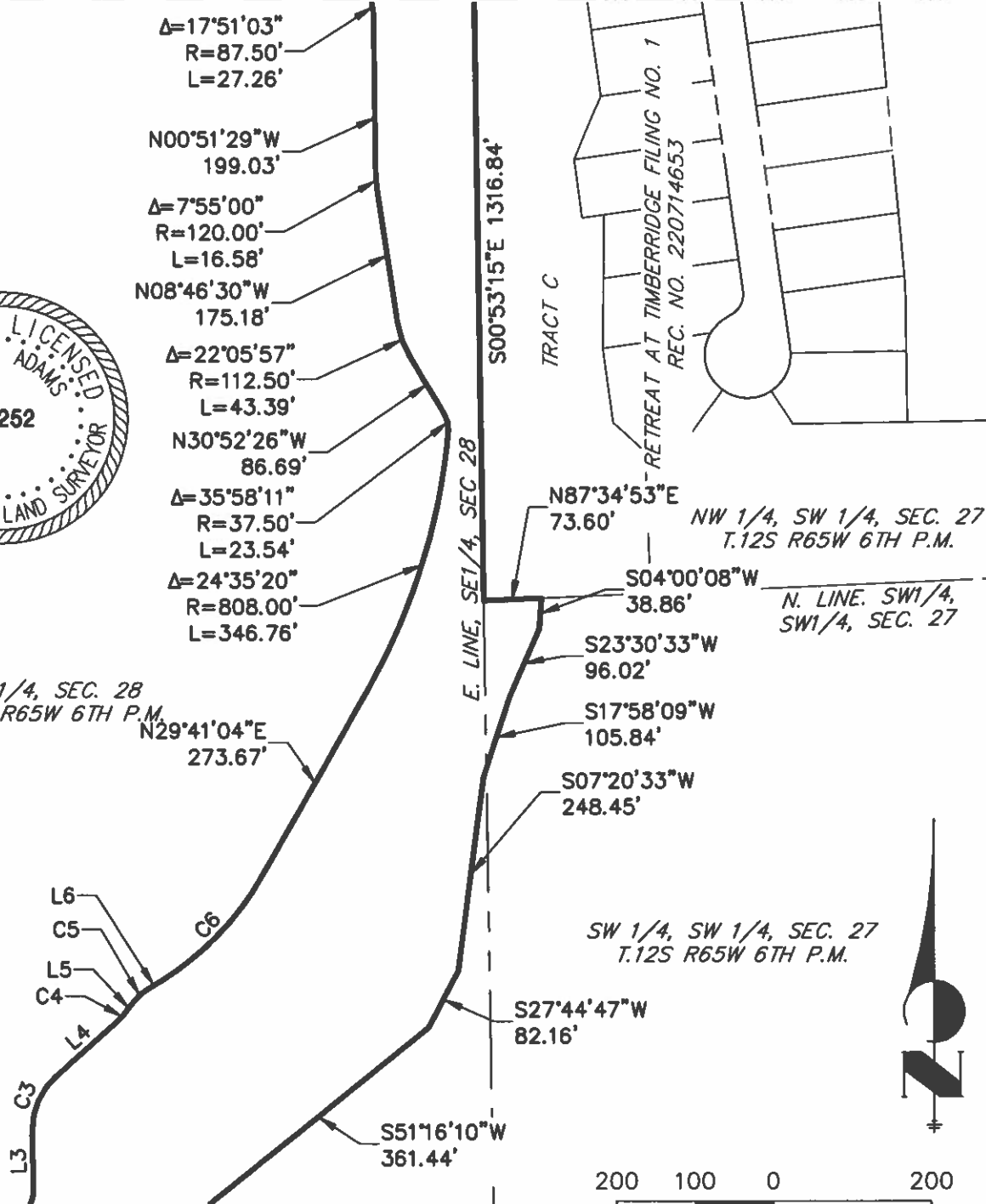
NOTE: THIS EXHIBIT DOES NOT REPRESENT A MONUMENTED SURVEY. IT IS INTENDED ONLY TO DEPICT THE ATTACHED PROPERTY DESCRIPTION.

CHANNEL EASEMENT
HOMESTEAD NORTH AT STERLING RANCH
PROJECT NO.: 25188.00
DATE: 6/23/2022

EXHIBIT
SEE SHEET 7



SE 1/4, SEC. 28
T.12S R65W 6TH P.M.



SEE SHEET 5

NOTE: THIS EXHIBIT DOES NOT REPRESENT A MONUMENTED SURVEY. IT IS INTENDED ONLY TO DEPICT THE ATTACHED PROPERTY DESCRIPTION.

CHANNEL EASEMENT
HOMESTEAD NORTH AT STERLING RANCH
PROJECT NO.: 25188.00
DATE: 6/23/2022

SHEET: 6 OF 7

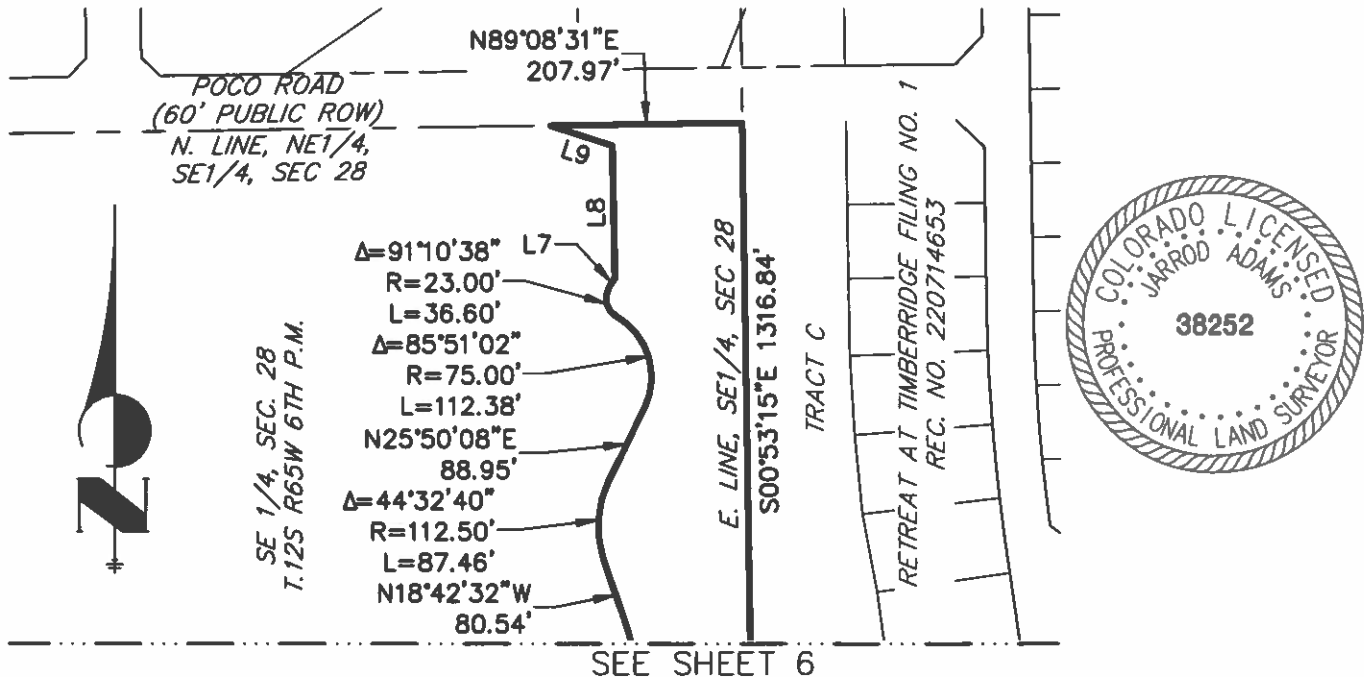
200 100 0 200
ORIGINAL SCALE: 1" = 200'



J-R ENGINEERING
A Westrian Company

Centennial 303-740-9993 • Colorado Springs 719-593-2593
Fort Collins 970-491-9888 • www.jrengineering.com

EXHIBIT



LINE TABLE		
LINE	BEARING	DISTANCE
L1	N47°06'44"E	42.79'
L2	N65°16'17"E	68.61'
L3	N01°15'45"W	72.65'
L4	N48°02'01"E	109.77'
L5	N37°40'20"E	20.53'

LINE TABLE		
LINE	BEARING	DISTANCE
L6	N58°29'29"E	21.44'
L7	N31°09'44"E	11.45'
L8	N01°04'03"W	143.40'
L9	N72°19'10"W	70.69'
L10	S29°35'35"W	198.68'

LINE TABLE		
LINE	BEARING	DISTANCE
L11	S56°06'51"W	68.55'
L12	S51°10'06"W	86.23'
L13	S82°29'37"W	85.63'
L14	N82°52'49"W	82.74'
L15	N63°10'02"W	59.72'

CURVE TABLE			
CURVE	DELTA	RADIUS	LENGTH
C1	18°09'34"	61.00'	19.33'
C2	66°32'02"	39.00'	45.29'
C3	49°17'46"	92.50'	79.59'
C4	10°21'41"	37.50'	6.78'
C5	20°49'08"	62.50'	22.71'

CURVE TABLE			
CURVE	DELTA	RADIUS	LENGTH
C6	28°48'24"	372.00'	187.03'
C7	66°07'59"	43.53'	50.25'
C8	21°27'48"	208.41'	78.07'
C9	85°24'40"	85.46'	127.39'

200 100 0 200

ORIGINAL SCALE: 1" = 200'

NOTE: THIS EXHIBIT DOES NOT REPRESENT A MONUMENTED SURVEY. IT IS INTENDED ONLY TO DEPICT THE ATTACHED PROPERTY DESCRIPTION.

CHANNEL EASEMENT
 HOMESTEAD NORTH AT STERLING RANCH
 PROJECT NO.: 25188.00
 DATE: 6/23/2022

SHEET: 7 OF 7



J-R ENGINEERING
 A Westrian Company

Centennial 303-740-9998 • Colorado Springs 719-593-2593
 Fort Collins 970-491-9998 • www.jrengineering.com



JOB NO. 1183.22-07
JULY 7, 2022
PAGE 1 OF 6

619 N. Cascade Avenue, Suite 200 (719) 785-0790
Colorado Springs, Colorado 80903 (719) 785-0799 (Fax)

LEGAL DESCRIPTION: STERLING RANCH EAST DRAINAGE EASEMENT

THREE (3) PARCELS OF LAND BEING A PORTION OF SECTIONS 27, 28, 33 AND 34, ALL IN TOWNSHIP 12 SOUTH, RANGE 65 WEST OF THE SIXTH PRINCIPAL MERIDIAN, EL PASO COUNTY, COLORADO, BEING MORE PARTICULARLY DESCRIBED AS FOLLOWS:

BASIS OF BEARINGS: THE SOUTH LINE OF THE SOUTHEAST QUARTER OF THE NORTHEAST QUARTER OF SECTION 28, TOWNSHIP 12 SOUTH, RANGE 65 WEST OF THE SIXTH PRINCIPAL MERIDIAN, BEING MONUMENTED AT THE WEST END WHICH IS THE CENTER-EAST ONE-SIXTEENTH CORNER OF SAID SECTION 28, BY A 3-1/4" ALUMINUM SURVEYORS CAP STAMPED "ESI PLS 10376, 2006" AND AT THE EAST END, WHICH IS A 30' WITNESS CORNER TO THE EAST OF THE EAST QUARTER CORNER OF SAID SECTION 28, BY A 3-1/4" ALUMINUM SURVEYORS CAP STAMPED "ESI 10376, 2006", IS ASSUMED TO BEAR N89°08'28"E, A DISTANCE OF 1356.68 FEET.

PARCEL 1

COMMENCING AT THE CENTER-EAST ONE-SIXTEENTH CORNER OF SECTION 28, TOWNSHIP 12 SOUTH, RANGE 65 WEST OF THE SIXTH PRINCIPAL MERIDIAN EL PASO COUNTY, COLORADO, SAID POINT BEING THE SOUTHWESTERLY CORNER OF RETREAT AT TIMBERRIDGE FILING NO. 1 RECORDED UNDER RECEPTION NO. 220714653 RECORDS OF EL PASO COUNTY, COLORADO;

THENCE S12°01'42"W, A DISTANCE OF 7255.05 FEET TO THE POINT OF BEGINNING;

THENCE N76°19'20"E, A DISTANCE OF 79.99 FEET;

THENCE S13°40'40"E, A DISTANCE OF 475.82 FEET;

THENCE S51°50'20"E, A DISTANCE OF 126.52 FEET;

THENCE S31°00'00"W, A DISTANCE OF 351.85 FEET TO THE SOUTH LINE OF SECTION 33, TOWNSHIP 12 SOUTH, RANGE 65 WEST OF THE SIXTH PRINCIPAL MERIDIAN, EL PASO COUNTY, COLORADO;

THENCE S89°04'30"W, ON THE SOUTH LINE OF THE SOUTHEAST QUARTER OF SAID SECTION 33, A DISTANCE OF 416.25 FEET TO THE SOUTHEASTERLY CORNER OF PARCEL A AS DESCRIBED IN A DOCUMENT RECORDED UNDER RECEPTION NO. 214100607;

THENCE ON THE EASTERLY BOUNDARY OF SAID PARCEL A AS DESCRIBED IN A DOCUMENT RECORDED UNDER RECEPTION NO. 214100607 THE FOLLOWING SEVEN (7) COURSES;

1. N35°56'43"E, A DISTANCE OF 113.88 FEET;
2. N78°47'17"E, A DISTANCE OF 182.32 FEET;
3. N54°45'26"E, A DISTANCE OF 199.63 FEET;
4. N30°01'21"W, A DISTANCE OF 151.07 FEET;
5. N05°59'19"W, A DISTANCE OF 253.00 FEET;
6. N17°59'13"E, A DISTANCE OF 156.80 FEET;
7. N40°32'14"W, A DISTANCE OF 73.04 FEET TO THE POINT OF BEGINNING.

CONTAINING A CALCULATED AREA OF 3.480 ACRES.

PARCEL 2

COMMENCING AT THE CENTER-EAST ONE-SIXTEENTH CORNER OF SECTION 28, TOWNSHIP 12 SOUTH, RANGE 65 WEST OF THE SIXTH PRINCIPAL MERIDIAN EL PASO COUNTY, COLORADO, SAID POINT BEING THE SOUTHWESTERLY CORNER OF RETREAT AT TIMBERRIDGE FILING NO. 1 RECORDED UNDER RECEPTION NO. 220714653 RECORDS OF EL PASO COUNTY, COLORADO;

THENCE S00°12'09"E, A DISTANCE OF 3492.74 FEET TO THE NORTHEASTERLY CORNER OF TRACT D AS PLATTED IN STERLING RANCH FILING NO. 1 RECORDED UNDER RECEPTION NO. 218714151 SAID POINT BEING THE POINT OF BEGINNING;

THENCE S50°26'12"E, A DISTANCE OF 323.25 FEET;

THENCE S52°00'00"W, A DISTANCE OF 185.50 FEET;

THENCE S38°00'00"W, A DISTANCE OF 193.10 FEET;

THENCE S10°00'00"W, A DISTANCE OF 220.86 FEET;

THENCE S30°00'00"W, A DISTANCE OF 132.91 FEET;

THENCE S66°00'00"W, A DISTANCE OF 166.27 FEET;

THENCE S78°00'00"W, A DISTANCE OF 159.90 FEET;
THENCE S65°00'00"W, A DISTANCE OF 409.58 FEET;
THENCE S56°00'00"W, A DISTANCE OF 158.78 FEET;
THENCE S45°00'00"W, A DISTANCE OF 189.12 FEET;
THENCE S65°00'00"W, A DISTANCE OF 83.60 FEET;
THENCE S80°00'00"W, A DISTANCE OF 107.71 FEET;
THENCE S15°00'00"W, A DISTANCE OF 116.14 FEET;
THENCE S08°00'00"E, A DISTANCE OF 73.64 FEET;
THENCE S31°00'00"E, A DISTANCE OF 313.48 FEET;
THENCE S20°00'00"E, A DISTANCE OF 147.64 FEET;
THENCE S08°00'00"E, A DISTANCE OF 146.16 FEET;
THENCE S10°00'00"W, A DISTANCE OF 238.00 FEET;
THENCE S40°00'00"W, A DISTANCE OF 220.56 FEET;
THENCE S00°08'25"W, A DISTANCE OF 136.58 FEET;
THENCE S33°00'00"E, A DISTANCE OF 357.10 FEET;
THENCE S57°00'00"W, A DISTANCE OF 316.11 FEET;
THENCE S00°00'00"E, A DISTANCE OF 359.20 FEET;
THENCE S76°19'20"W, A DISTANCE OF 376.40 FEET TO THE SOUTHEASTERLY CORNER OF SAID TRACT D;

THENCE ON THE EASTERLY BOUNDARY OF SAID TRACT D THE FOLLOWING TWENTY-SIX (26) COURSES:

1. N76°13'42"W, A DISTANCE OF 278.31 FEET;
2. N17°53'47"W, A DISTANCE OF 105.91 FEET;
3. N46°52'24"E, A DISTANCE OF 128.28 FEET;
4. N15°27'56"W, A DISTANCE OF 241.77 FEET;
5. N00°53'19"W, A DISTANCE OF 131.63 FEET;
6. N35°47'33"E, A DISTANCE OF 139.61 FEET;
7. N46°04'45"E, A DISTANCE OF 252.38 FEET;
8. N60°18'33"E, A DISTANCE OF 166.84 FEET;
9. N65°39'18"E, A DISTANCE OF 252.42 FEET;
10. N02°44'27"E, A DISTANCE OF 452.46 FEET;
11. N26°06'12"W, A DISTANCE OF 393.42 FEET;
12. N04°22'24"W, A DISTANCE OF 296.69 FEET;
13. N13°28'59"E, A DISTANCE OF 371.46 FEET;
14. S88°53'18"E, A DISTANCE OF 56.14 FEET;
15. S19°39'33"E, A DISTANCE OF 163.51 FEET;
16. S50°40'25"E, A DISTANCE OF 72.52 FEET;
17. N50°58'40"E, A DISTANCE OF 94.24 FEET;
18. N40°27'16"E, A DISTANCE OF 150.60 FEET;
19. N65°02'48"E, A DISTANCE OF 632.56 FEET;
20. N87°30'37"E, A DISTANCE OF 117.08 FEET;
21. N59°31'52"E, A DISTANCE OF 178.71 FEET;
22. N00°14'13"E, A DISTANCE OF 243.48 FEET;
23. N31°50'18"E, A DISTANCE OF 229.19 FEET;
24. N42°37'17"E, A DISTANCE OF 138.57 FEET;
25. N14°40'14"W, A DISTANCE OF 112.26 FEET;
26. N39°33'48"E, A DISTANCE OF 15.00 FEET TO THE POINT OF BEGINNING.

CONTAINING A CALCULATED AREA OF 28.987 ACRES.

PARCEL 3

COMMENCING AT THE CENTER-EAST ONE-SIXTEENTH CORNER OF SECTION 28, TOWNSHIP 12 SOUTH, RANGE 65 WEST OF THE SIXTH PRINCIPAL MERIDIAN EL PASO COUNTY, COLORADO, SAID POINT BEING THE SOUTHWESTERLY CORNER OF RETREAT AT TIMBERRIDGE FILING NO. 1 RECORDED UNDER RECEPTION NO. 220714653 RECORDS OF EL PASO COUNTY, COLORADO;

THENCE ON THE SOUTHERLY, WESTERLY AND SOUTHERLY BOUNDARY OF SAID RETREAT AT TIMBERRIDGE FILING NO. 1 THE FOLLOWING THREE (3) COURSES:

1. N89°08'28"E, A DISTANCE OF 1326.68 FEET TO THE EAST QUARTER CORNER OF SAID SECTION 28;
2. S00°53'18"E, A DISTANCE OF 1316.78 FEET;
3. N87°35'00"E, A DISTANCE OF 73.64 FEET TO THE POINT OF BEGINNING;

THENCE CONTINUING N87°35'00"E, ON THE SOUTHERLY BOUNDARY OF SAID RETREAT AT TIMBERRIDGE FILING NO. 1, A DISTANCE OF 61.61 FEET;
THENCE S02°25'00"E, A DISTANCE OF 408.44 FEET;
THENCE S15°00'00"W, A DISTANCE OF 125.56 FEET;

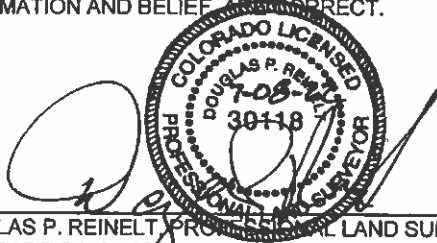
THENCE S51°25'27"W, A DISTANCE OF 147.11 FEET;
THENCE S47°55'25"W, A DISTANCE OF 147.11 FEET;
THENCE S43°01'44"W, A DISTANCE OF 147.11 FEET;
THENCE S39°33'48"W, A DISTANCE OF 282.90 FEET;
THENCE S34°39'51"W, A DISTANCE OF 70.26 FEET;
THENCE S47°41'36"W, A DISTANCE OF 70.71 FEET;
THENCE S43°38'56"W, A DISTANCE OF 70.18 FEET;
THENCE N50°26'12"W, A DISTANCE OF 40.00 FEET;
THENCE S71°59'24"W, A DISTANCE OF 208.94 FEET;
THENCE S39°33'48"W, A DISTANCE OF 98.87 FEET;
THENCE S18°00'00"W, A DISTANCE OF 171.46 FEET;
THENCE S50°26'12"E, A DISTANCE OF 40.00 FEET;
THENCE S39°33'48"W, A DISTANCE OF 721.68 FEET;
THENCE N50°26'12"W, A DISTANCE OF 75.41 FEET;
THENCE N03°04'57"W, A DISTANCE OF 230.22 FEET;
THENCE N14°57'52"E, A DISTANCE OF 155.36 FEET;
THENCE N41°47'19"E, A DISTANCE OF 88.37 FEET;
THENCE N32°15'45"E, A DISTANCE OF 71.66 FEET;
THENCE N19°42'21"E, A DISTANCE OF 185.56 FEET;
THENCE N12°38'34"E, A DISTANCE OF 55.41 FEET;
THENCE N27°12'58"E, A DISTANCE OF 75.48 FEET;
THENCE N01°04'54"E, A DISTANCE OF 49.42 FEET;
THENCE N87°04'53"E, A DISTANCE OF 91.55 FEET;
THENCE N12°28'27"E, A DISTANCE OF 90.70 FEET TO A POINT OF CURVE;
THENCE ON THE ARC OF A CURVE TO THE RIGHT HAVING A DELTA OF 85°24'40", A RADIUS OF 85.46 FEET AND A DISTANCE OF 127.39 FEET TO A POINT OF REVERSE CURVE;
THENCE ON THE ARC OF A CURVE TO THE LEFT HAVING A DELTA OF 21°27'48", A RADIUS OF 208.41 FEET AND A DISTANCE OF 78.07 FEET TO A POINT OF REVERSE CURVE;
THENCE ON THE ARC OF A CURVE TO THE RIGHT HAVING A DELTA OF 66°07'59", A RADIUS OF 43.53 FEET AND A DISTANCE OF 50.24 FEET TO A POINT ON CURVE;
THENCE S63°10'02"E, A DISTANCE OF 59.72 FEET;
THENCE S82°52'49"E, A DISTANCE OF 82.74 FEET;
THENCE N82°29'37"E, A DISTANCE OF 85.63 FEET;
THENCE N51°10'06"E, A DISTANCE OF 86.23 FEET;
THENCE N56°06'51"E, A DISTANCE OF 68.55 FEET;
THENCE N29°35'35"E, A DISTANCE OF 198.68 FEET;
THENCE N51°16'10"E, A DISTANCE OF 361.44 FEET;
THENCE N27°44'47"E, A DISTANCE OF 82.16 FEET;
THENCE N07°20'33"E, A DISTANCE OF 248.45 FEET;
THENCE N17°58'09"E, A DISTANCE OF 105.84 FEET;
THENCE N23°30'33"E, A DISTANCE OF 96.02 FEET;
THENCE N04°00'08"E, A DISTANCE OF 38.97 FEET TO THE POINT OF BEGINNING.

CONTAINING A CALCULATED AREA OF 11.976 ACRES.

CONTAINING A TOTAL CALCULATED AREA OF 44.443 ACRES.

LEGAL DESCRIPTION STATEMENT:

I, DOUGLAS P. REINELT, A LICENSED PROFESSIONAL LAND SURVEYOR IN THE STATE OF COLORADO, DO HEREBY STATE THAT THE ABOVE LEGAL DESCRIPTION AND ATTACHED EXHIBIT WERE PREPARED UNDER MY RESPONSIBLE CHARGE AND ON THE BASIS OF MY KNOWLEDGE, INFORMATION AND BELIEF TO BE CORRECT.



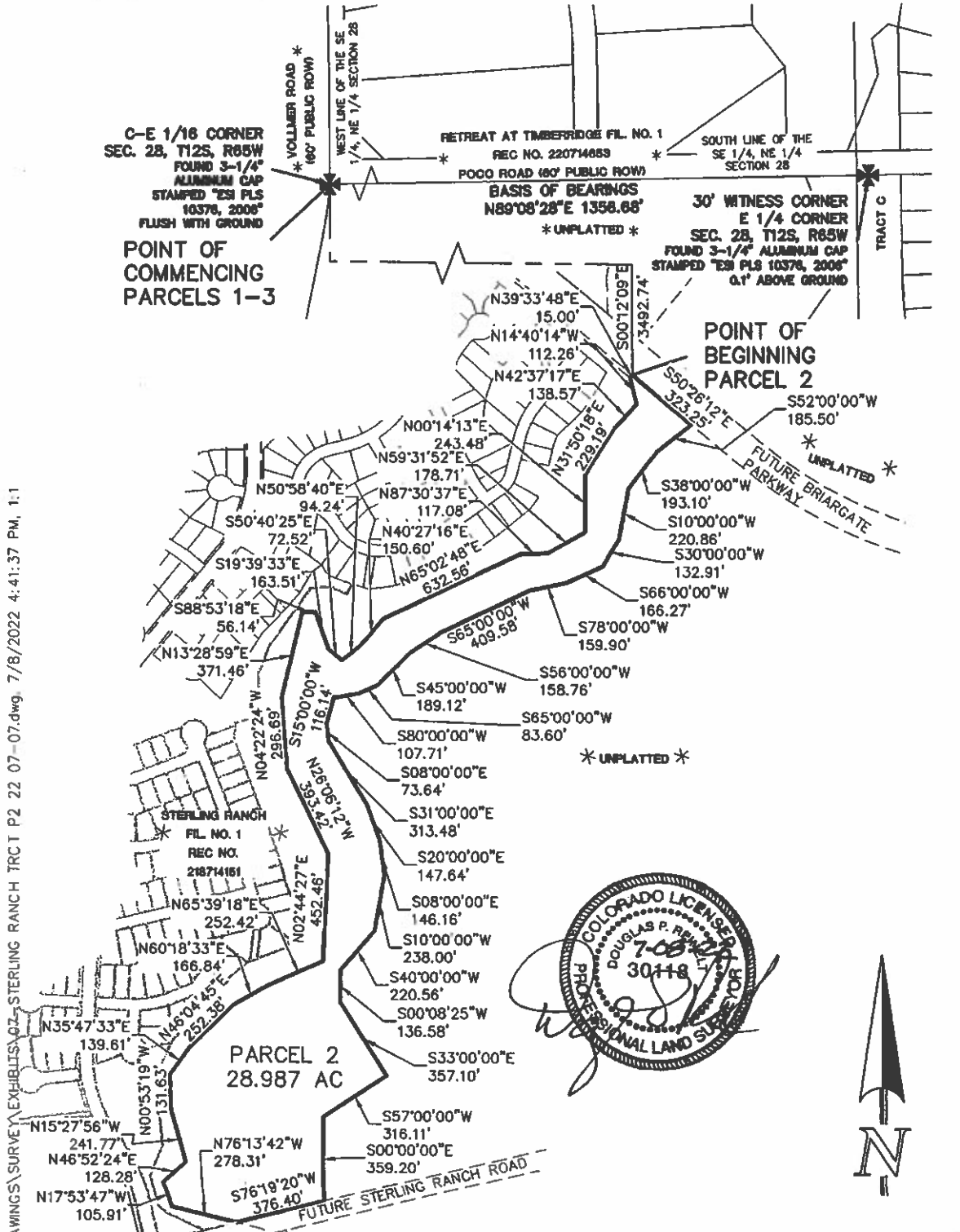
DOUGLAS P. REINELT, PROFESSIONAL LAND SURVEYOR
COLORADO P.L.S. NO. 30118
FOR AND ON BEHALF OF CLASSIC CONSULTING
ENGINEERS AND SURVEYORS, LLC

July 08, 2022
DATE

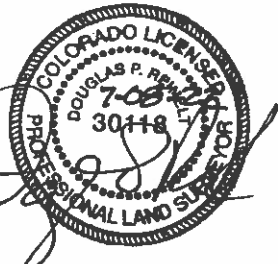


619 North Cascade Avenue, Suite 200 (719)785-0790
 Colorado Springs, Colorado 80903 (719)785-0799 (Fax)

STERLING RANCH TRACTS
 PARCEL 2
 JOB NO. 1183.22-07
 JULY 7, 2022
 SHEET 5 OF 6



DRAWINGS: SURVEY EXHIBITS: 02-STERLING RANCH TRCT P2 22 07-07.dwg, 7/8/2022 4:41:37 PM, 1:1



CCES, LLC DOES NOT EXPRESS NOR IMPLY ANY WARRANTY WITH THE ABOVE WRITTEN LEGAL DESCRIPTION AND EXHIBIT. THE LEGAL DESCRIPTION WAS WRITTEN FOR INFORMATIONAL PURPOSES ONLY AND DOES NOT DEPICT A MONUMENTED LAND SURVEY.

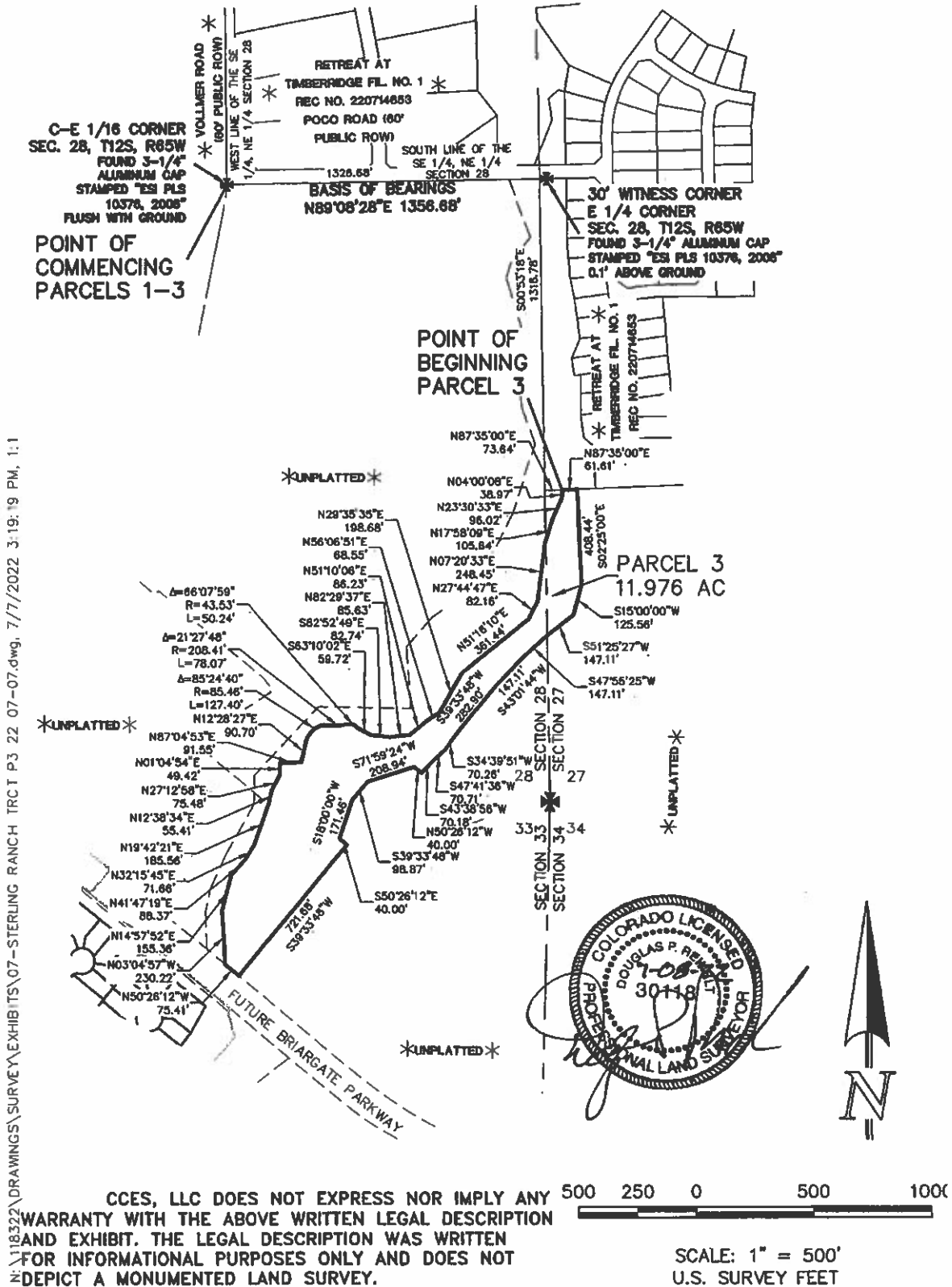


SCALE: 1" = 500'
 U.S. SURVEY FEET



STERLING RANCH TRACTS
 PARCEL 3
 JOB NO. 1183.22-07
 JULY 7, 2022
 SHEET 6 OF 6

619 North Cascade Avenue, Suite 200 (719)785-0790
 Colorado Springs, Colorado 80903 (719)785-0799 (Fax)



N:\118322\DRAWINGS\SURVEY\EXHIBITS\07-STERLING RANCH TRCT P3 22 07-07.dwg, 7/7/2022 3:19:19 PM, 1:1