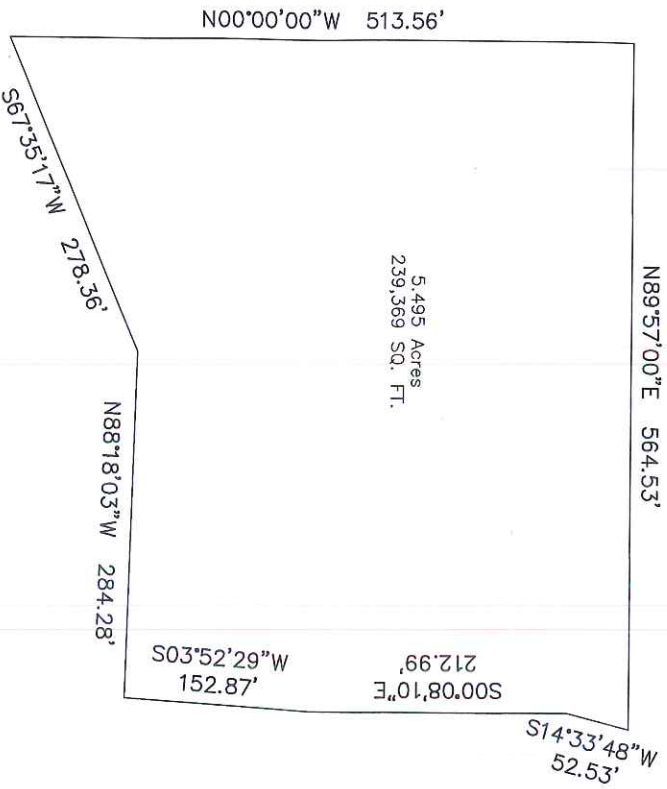


Thu Jul 23 14:30:50 2020

Inverse With Area

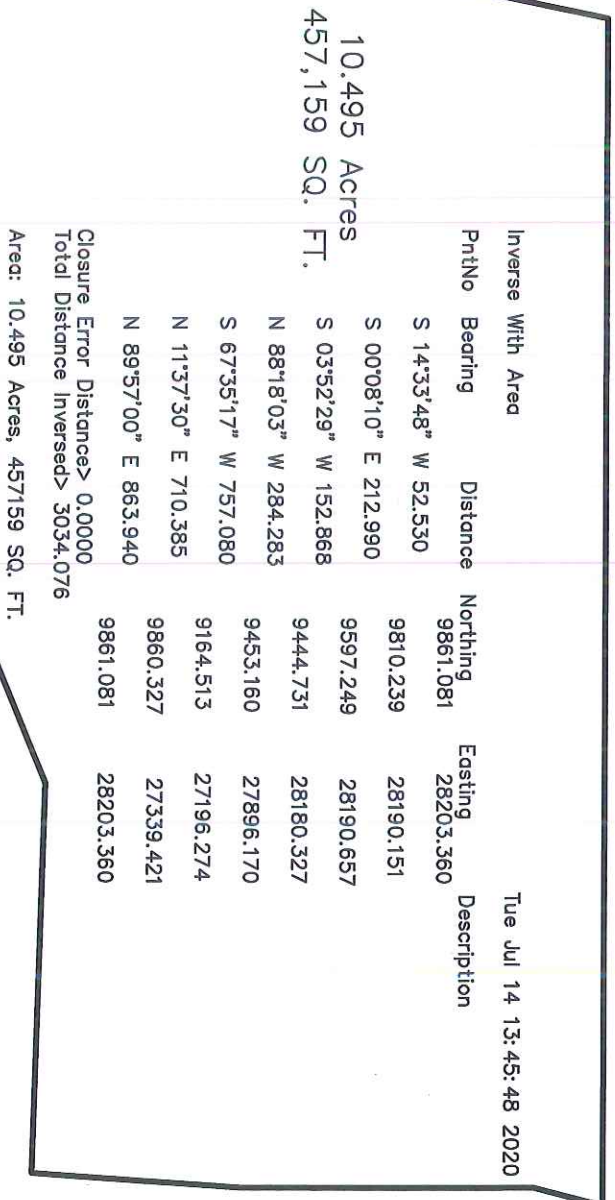
PntNo	Bearing	Distance	Northing	Easting	Description
S 00°00'00"	E 513.557	6426.245	16546.483		
S 67°35'17"	W 478.719	5912.688	16546.483		
N 11°37'30"	E 710.385	5730.17	16103.923		
N 89°57'00"	E 299.414	6425.984	16247.069		
Closure Error Distance > 0.0000			6426.245	16546.483	
Total Distance Inversed > 2002.075					
Area: 5 Acres, 217789 SQ. FT.					



Thu Jul 23 14:31:02 2020

Inverse With Area

PntNo	Bearing	Distance	Northing	Easting	Description
S 00°08'10"	E 212.99	5199.561	16641.196		
S 03°52'29"	W 152.868	4986.572	16641.702		
N 88°18'03"	W 284.283	4834.053	16631.372		
S 67°35'17"	W 278.361	4842.483	16347.214		
N 00°00'00"	W 513.557	4736.354	16089.879		
N 89°57'00"	E 564.526	5249.911	16089.879		
S 14°33'48"	W 52.53	5250.404	16654.405		
Closure Error Distance > 0.0000			5199.561	16641.196	
Total Distance Inversed > 2059.114					
Area: 5.495 Acres, 239369 SQ. FT.					



Tue Jul 14 13:45:48 2020

Inverse With Area

PntNo	Bearing	Distance	Northing	Easting	Description
S 14°33'48"	W 52.530	9810.239	28203.360		
S 00°08'10"	E 212.990	9597.249	28190.657		
S 03°52'29"	W 152.868	9444.731	28180.327		
N 88°18'03"	W 284.283	9453.160	27896.170		
S 67°35'17"	W 757.080	9164.513	27196.274		
N 11°37'30"	E 710.385	9860.327	27339.421		
N 89°57'00"	E 863.940	9861.081	28203.360		
Closure Error Distance > 0.0000					
Total Distance Inversed > 3034.076					
Area: 10.495 Acres, 457159 SQ. FT.					

MCGEEHEE SUBDIVISION

A VACATION AND RESUBDIVISION OF LOT 3, "MOUNTAIN SHADOW RANCH SECOND PHASE",
BEING A PORTION OF THE SOUTHWEST QUARTER OF SECTION 19,
TOWNSHIP 11 SOUTH, RANGE 65 WEST OF THE 6TH P.M., EL PASO COUNTY, COLORADO

" CLOSURE SHEET "