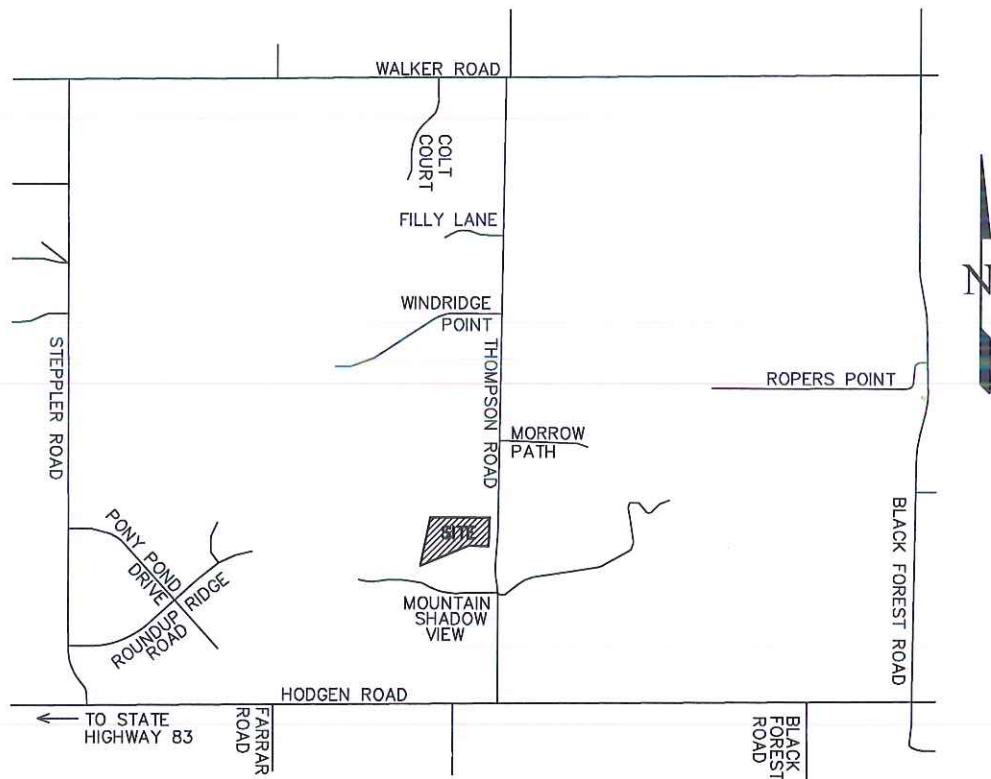


MCGEHEE SUBDIVISION

A VACATION AND RESUBDIVISION OF LOT 3, "MOUNTAIN SHADOW RANCH SECOND PHASE",
BEING A PORTION OF THE SOUTHWEST QUARTER OF SECTION 19,
TOWNSHIP 11 SOUTH, RANGE 65 WEST OF THE 6TH P.M., EL PASO COUNTY, COLORADO



VICINITY MAP

NO SCALE