

P:\Challenges\Bent Grass West Residential Drawings\Planning\Pre-land\FALCON MEADOWS_FILING_1_PLP.dwg [Details\Notes] 7/21/2021 12:20:00 PM karela

LANDSCAPE NOTES

- ALL PRESERVATION AREAS CONTAINING VEGETATION DESIGNATED TO BE PRESERVED, SHALL BE FENCED OFF DURING CONSTRUCTION TO MINIMIZE DISTURBANCE IN THESE AREAS. ALL FENCING SHALL BE INSTALLED AROUND PRESERVED VEGETATION PRIOR TO ANY GRADING ON THE PROPERTY. A 4-FOOT, ORANGE, CONSTRUCTION SAFETY FENCE SHALL BE USED IN THIS APPLICATION.
- SOIL AMENDMENT - INCORPORATE 3 CUBIC YARDS/1000 SF AREA OF "PREMIUM 3 ORGANIC COMPOST", OR APPROVED EQUAL, ON BLUEGRASS TURF AREAS. INCORPORATE 2 CUBIC YARDS/1000 SF AREA OF ORGANIC COMPOST (DECOMPOSED MANURE) TO ALL NATIVE SEED AREAS. TILL INTO TOP 8" OF SOIL. FOR PLANTING PIT AMENDMENTS, SEE LANDSCAPE DETAILS. FERTILIZER REQUIREMENTS BELOW ARE BASED ON SOIL ANALYSIS.

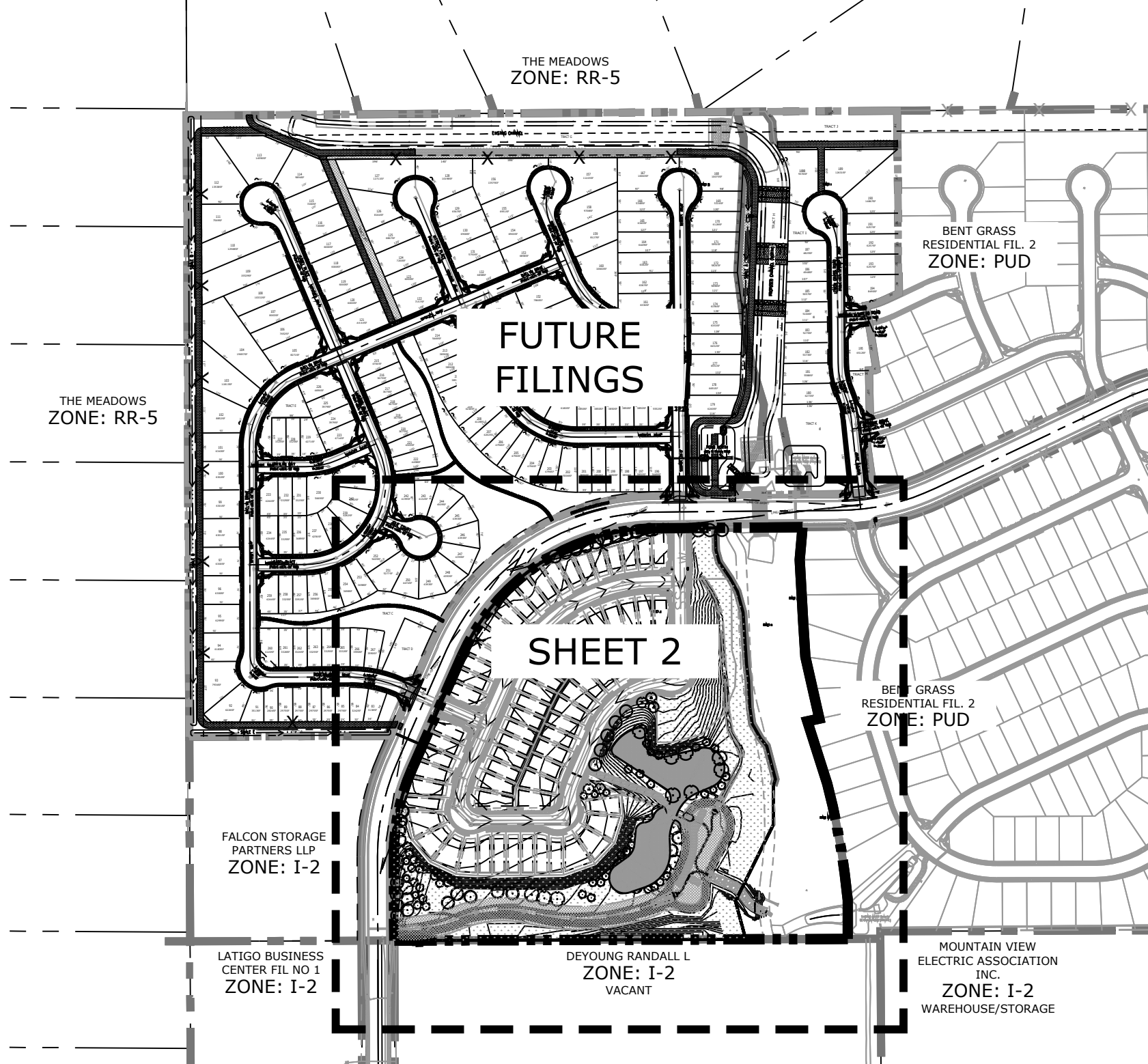
NITROGEN	0 LBS/1000SF
PHOSPHORUS (P2O5)	0 LBS/1000SF
POTASSIUM (K2O)	0 LBS/1000SF
SULFUR (SO4-S)	0 LBS/1000SF
LIME	0 LBS/1000SF

-OR-

RECOMMENDED SOIL AMENDMENT:
TRI-MIX III as supplied by C&C Sand
-To be applied as backfill in planting pits

- CONTRACTOR TO APPLY EROSION CONTROL BLANKET TO ALL SEED AREAS WITH GREATER THAN 3:1 SLOPES.
- FOR ALL SEED AREAS REFER TO SEED MIXES SPECIFIED ON THIS SHEET.
- ALL NATIVE SEED AREAS SHALL HAVE A TEMPORARY ABOVE-GROUND SPRAY IRRIGATION SYSTEM UTILIZED UNTIL SEED IS ESTABLISHED, AND ALL TREES AND SHRUBS WITHIN NATIVE SEED AREAS SHALL HAVE A PERMANENT DRIP IRRIGATION SYSTEM.
- A FULLY AUTOMATED SPRINKLER IRRIGATION SYSTEM WILL DRIP IRRIGATE ALL TREE, SHRUB, AND GROUND COVER PLANTINGS, AND SPRAY ALL TALL FESCUE SOD AND LOW ALTERNATIVE TURF AREAS. AN IRRIGATION PLAN WILL BE PREPARED AT A LATER DATE AND WILL INCLUDE AN IRRIGATION SCHEDULE THAT NOTES APPLICATION RATES BASED ON TURF TYPE, RATES FOR NEWLY INSTALLED PLANTS VS. ESTABLISHED PLANTS, AND GENERAL RECOMMENDATIONS REGARDING SEASONAL ADJUSTMENTS.
- SOD TO BE TALL FESCUE BLEND.
- NO SOD SHALL BE PLANTED ON SLOPES IN EXCESS OF 6:1 GRADIENT.
- CONTRACTOR TO UTILIZE STOCKPILED TOPSOIL FROM GRADING OPERATION AS AVAILABLE. TILL INTO TOP 6" OF SOIL.
- FOR GRADES REFER TO CIVIL ENGINEERING DRAWINGS.
- NO TREES AND NO PLANTS OVER 2 FEET TALL SHALL BE INSTALLED WITHIN 5 FEET OF ANY FIRE HYDRANTS.
- ALL PLANTS TO RECEIVE 3 INCH DEPTH OF GORILLA HAIR SHREDDED CEDAR WOOD MULCH UNLESS OTHERWISE SPECIFIED. FOLLOW PLANTING DETAILS FOR MULCH RING DIMENSIONS WITHIN ROCK, SOD, OR SEED AREAS.
- ROCK: 1 1/2" NORTHERN RIVER ROCK AT 1 1/2" DEPTH. INSTALL GEOTEXTILE FABRIC UNDER ALL ROCK AREAS.
- ALL SHRUB BEDS TO BE ENCLOSED BY SOLID STEEL EDGING, AS A SEPARATOR FROM SOD, SEED, AND ALTERNATIVE TURF. SEPARATION BETWEEN SOD AND SEED, AND BETWEEN ALTERNATIVE TURF AND SEED SHALL BE A MOWED STRIP, WITHOUT STEEL EDGING.
- SE: SOLID STEEL EDGING TO BE: "DURAEDGE" (1/8" THICK x 4" WIDE) STEEL LANDSCAPE EDGING, DARK GREEN COLOR, WITH ROLLED EDGE AND STEEL STAKES. USE SOLID STEEL EDGING EXCEPT WHERE NOTED ON THE PLANS.
- PSE: PERFORATED STEEL EDGING TO BE: ACME (14 GA. x 4" WIDE) GALVANIZED STEEL EDGING, WITH ROLLED EDGE AND GALVANIZED STEEL STAKES. COLOR TO BE DARK GREEN. USE PERFORATED STEEL EDGING AT BREEZE GRAVEL TRAILS ONLY. SEE PLAN FOR TRAIL LOCATIONS.
- ALL PLANTS NOT LABELED AS FULFILLING A COUNTY LANDSCAPE REQUIREMENT ARE "EXTRA" PER COUNTY STANDARDS, AND WILL BE INSTALLED AT THE OWNER'S DISCRETION.
- ANY FIELD CHANGES OR DEVIATIONS TO THESE PLANS WITHOUT PRIOR COUNTY APPROVAL OF AN AMENDED SITE DEVELOPMENT PLAN MAY RESULT IN A DELAY OF FINAL APPROVAL AND ISSUANCE OF A CERTIFICATE OF OCCUPANCY.
- THESE PLANS ARE FOR COUNTY APPROVALS ONLY AND ARE NOT TO BE UTILIZED FOR CONSTRUCTION.
- ALL TREES TO BE STAKED FOR A MINIMUM OF 18 MONTHS. REMOVE STAKING MATERIALS ONCE TREE IS ESTABLISHED, WHICH MAY DEPEND ON TREE SPECIES, MATURITY AND SITE CONDITIONS.
- FENCING SHALL BE PROVIDED ALONG BENT GRASS MEADOWS BLVD. WHERE DOUBLE FRONTAGE LOTS OCCUR, AND SHALL BE MAINTAINED BY THE BENT GRASS METROPOLITAN DISTRICT.
- LANDSCAPE REQUIREMENTS PERTAINING TO DOUBLE FRONTAGE NON-ARTERIAL COLLECTOR STREETS INCLUDE:
 - DEPTH OF ROADWAY LANDSCAPING AREA: 10 FEET
 - REQUIRED TREES: 1 PER 30 FEET
- LANDSCAPE ENTRY FEATURES, OPEN SPACE TRACTS, PARKS AND TRAILS SERVING RESIDENTIAL AREAS SHALL BE OWNED (WHEN APPROPRIATE) AND MAINTAINED BY THE BENT GRASS METRO DISTRICT. ALL DOUBLE FRONTAGE LOTS SHALL RECEIVE A COMBINATION OF FENCING AND LANDSCAPE BETWEEN THE PROPERTY LINE AND THE CURB. ALL DOUBLE FRONTAGE STREETS SHALL HAVE A MINIMUM OF ONE TREE PER 30 FEET OF FRONTAGE. THESE TREES CAN BE CLUSTERED ALONG THE FRONTAGE AS DETERMINED BY THE SUBDIVIDER.
- BUFFERING AND SCREENING SHALL INCLUDE BOTH FENCING, AND LANDSCAPING WHERE APPROPRIATE, ALONG THE PERIMETER OF THE PROJECT AND ALONG THE RIGHT-OF-WAY LINES OF BENT GRASS MEADOWS DRIVE AND BETWEEN CHANGES IN LAND USE. FENCING SHALL BE 6' CEDAR PRIVACY FENCE AND SHALL BE MAINTAINED BY THE BENT GRASS METROPOLITAN DISTRICT.
- NO SUBSTITUTIONS WITHOUT PREVIOUS APPROVAL OF LANDSCAPE ARCHITECT. UNAPPROVED DEVIATIONS FROM THIS PLAN WILL BE RECTIFIED AT CONTRACTORS EXPENSE.

KEY MAP



Landscape Setbacks

See El Paso County General Development Standards - Landscape Standards 6.2.2

Street Name or Zone Boundary	Street Classification	Width (in Ft.) Req./Prov.	Linear Footage	Tree/Feet Required	No. of Trees Req./ Prov.	Setback Plant Abbr. Denoted on Plan
------------------------------	-----------------------	---------------------------	----------------	--------------------	--------------------------	-------------------------------------

BENT GRASS MEADOWS DR. (South)	COLLECTOR	10' / 10'	1,200	1 / 30'	40 / 40	S
--------------------------------	-----------	-----------	-------	---------	---------	---

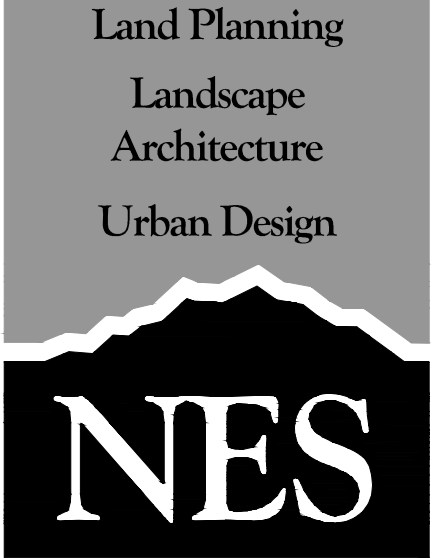
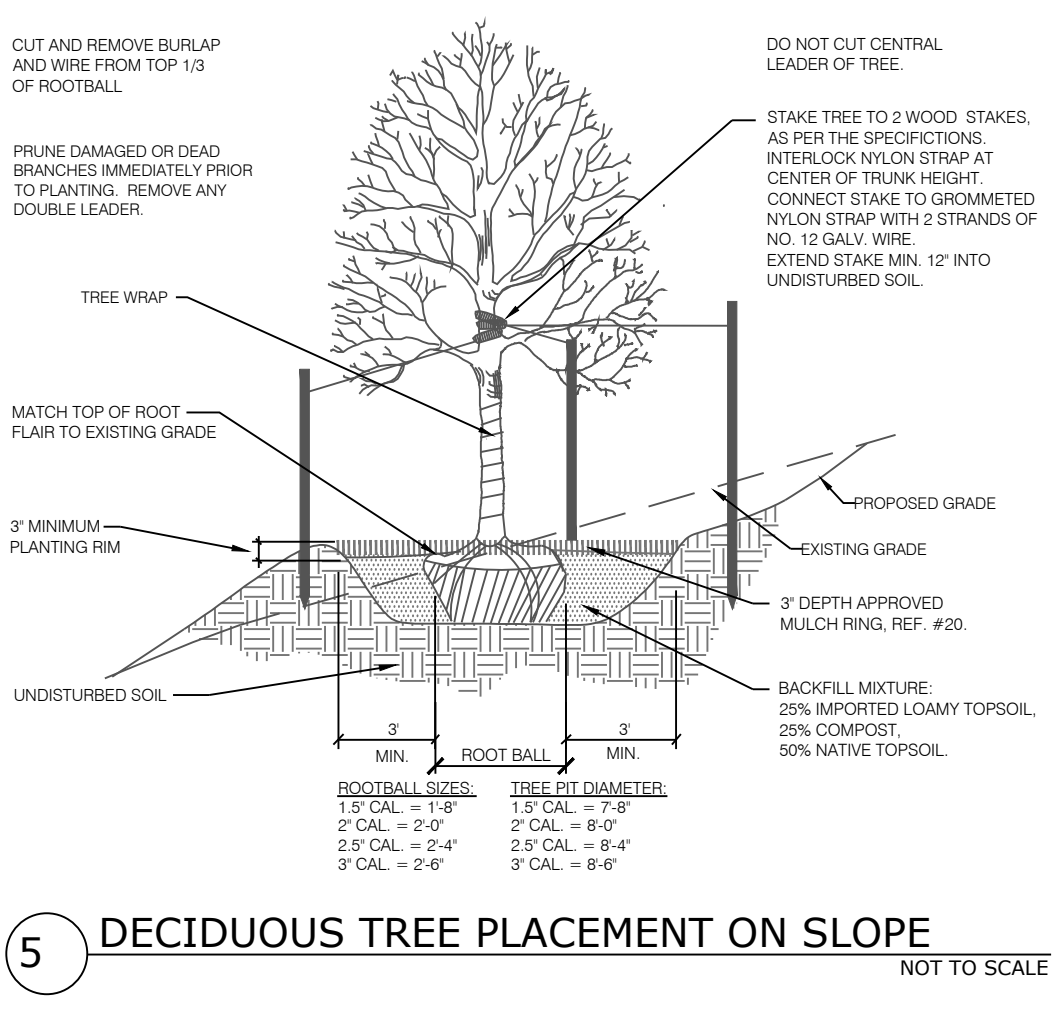
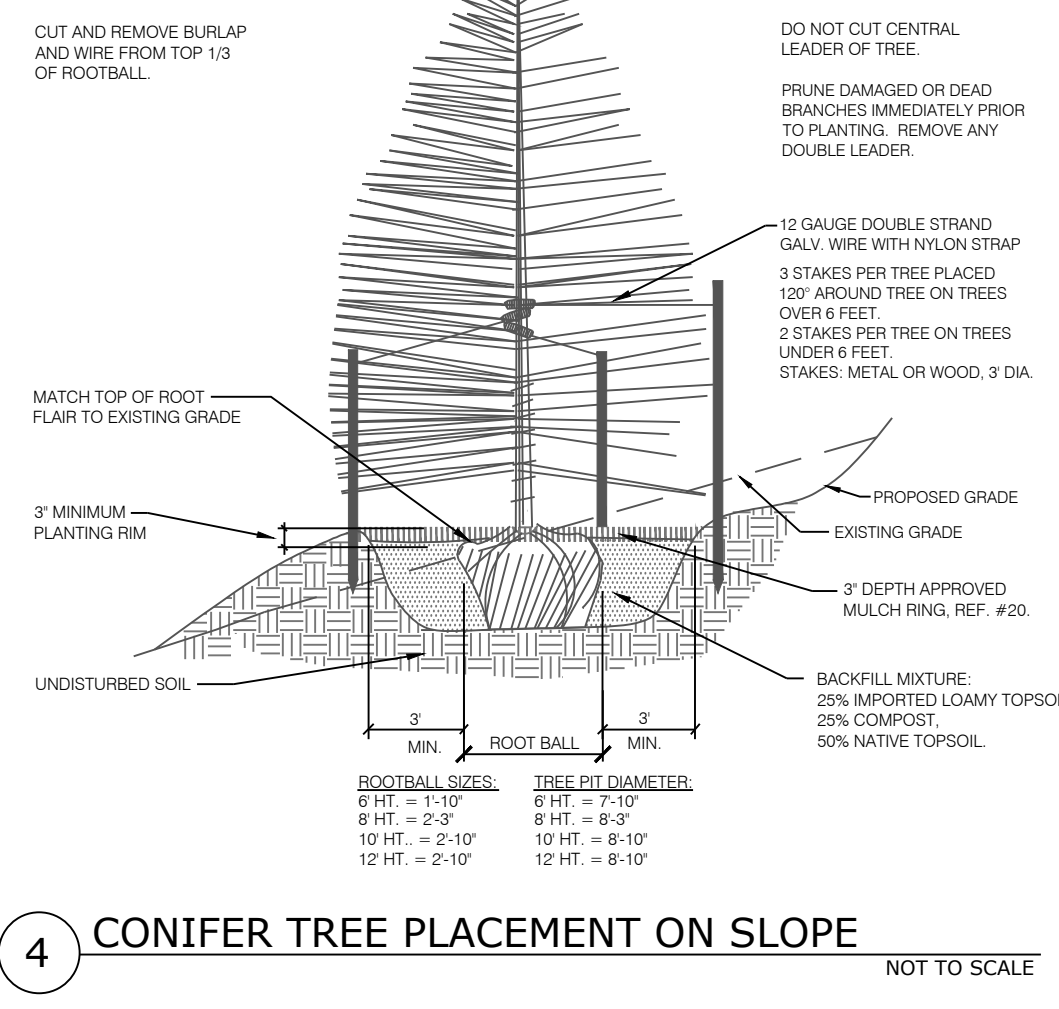
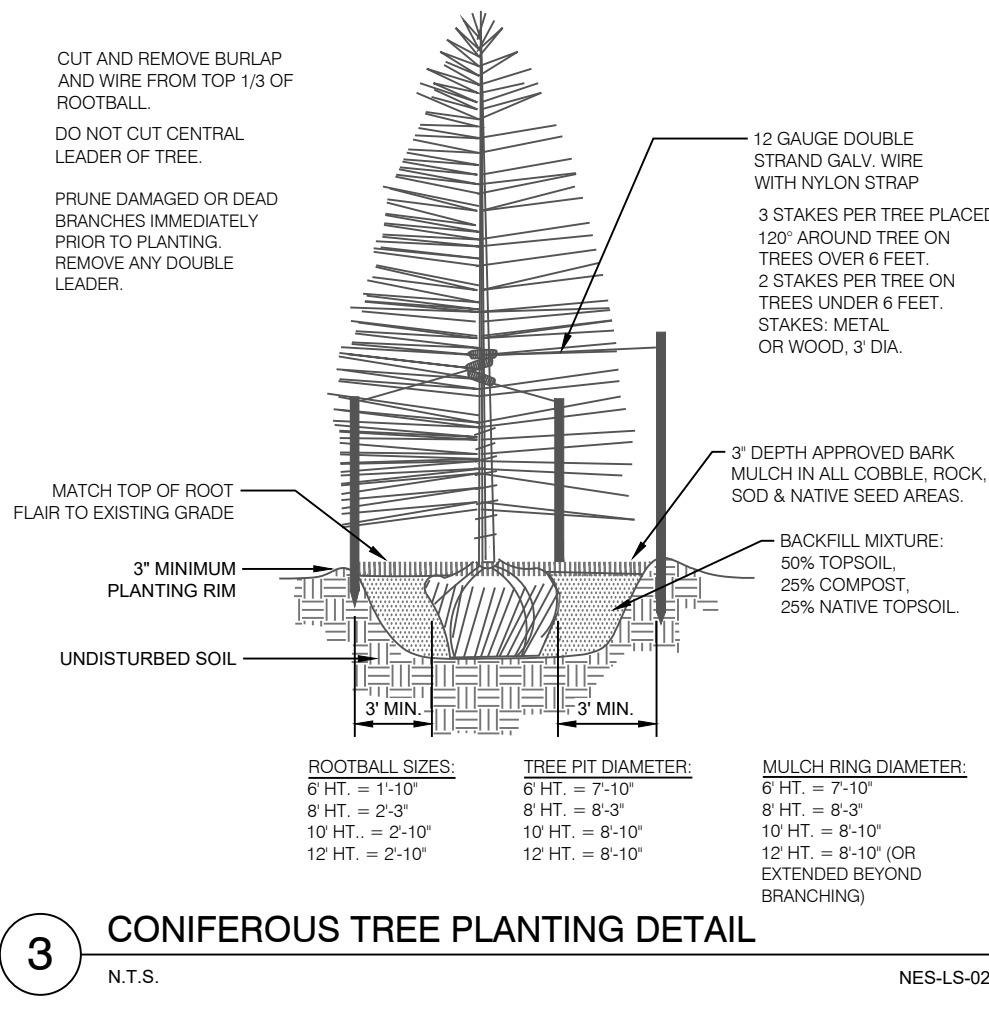
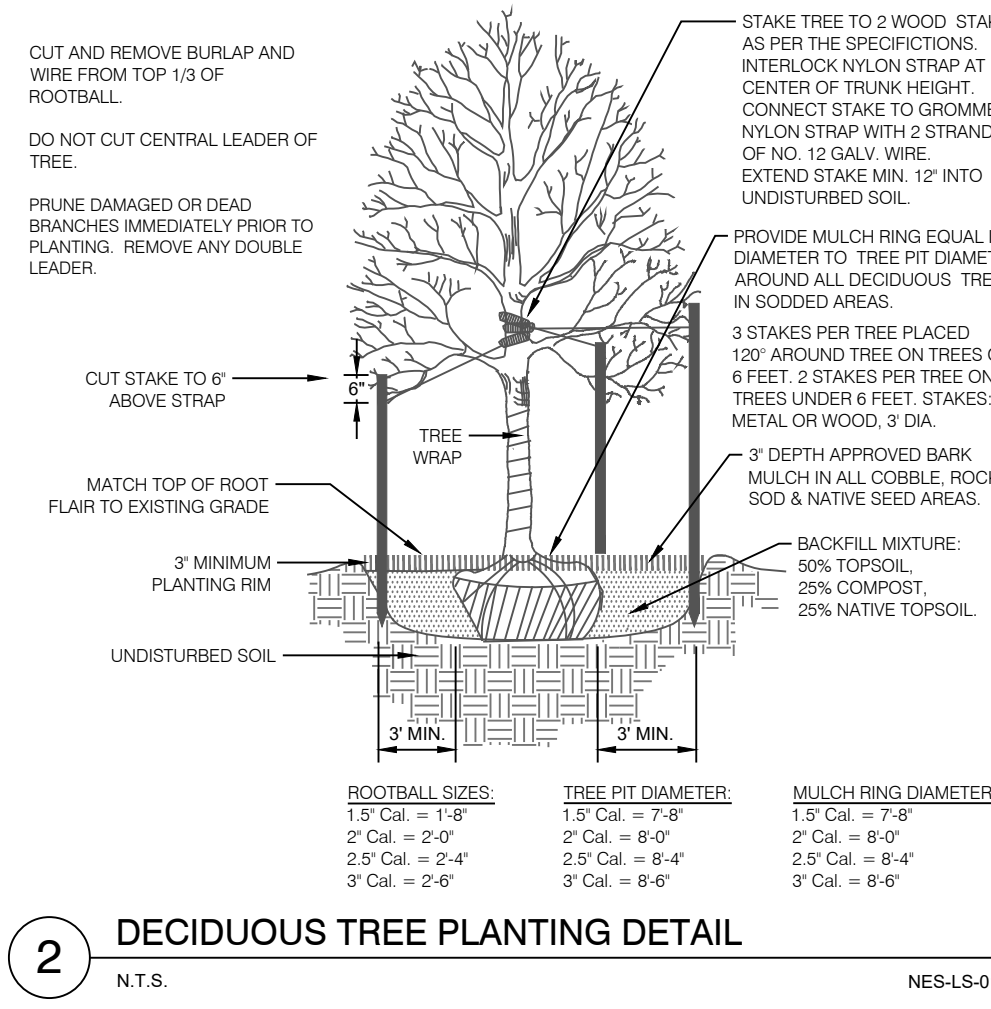
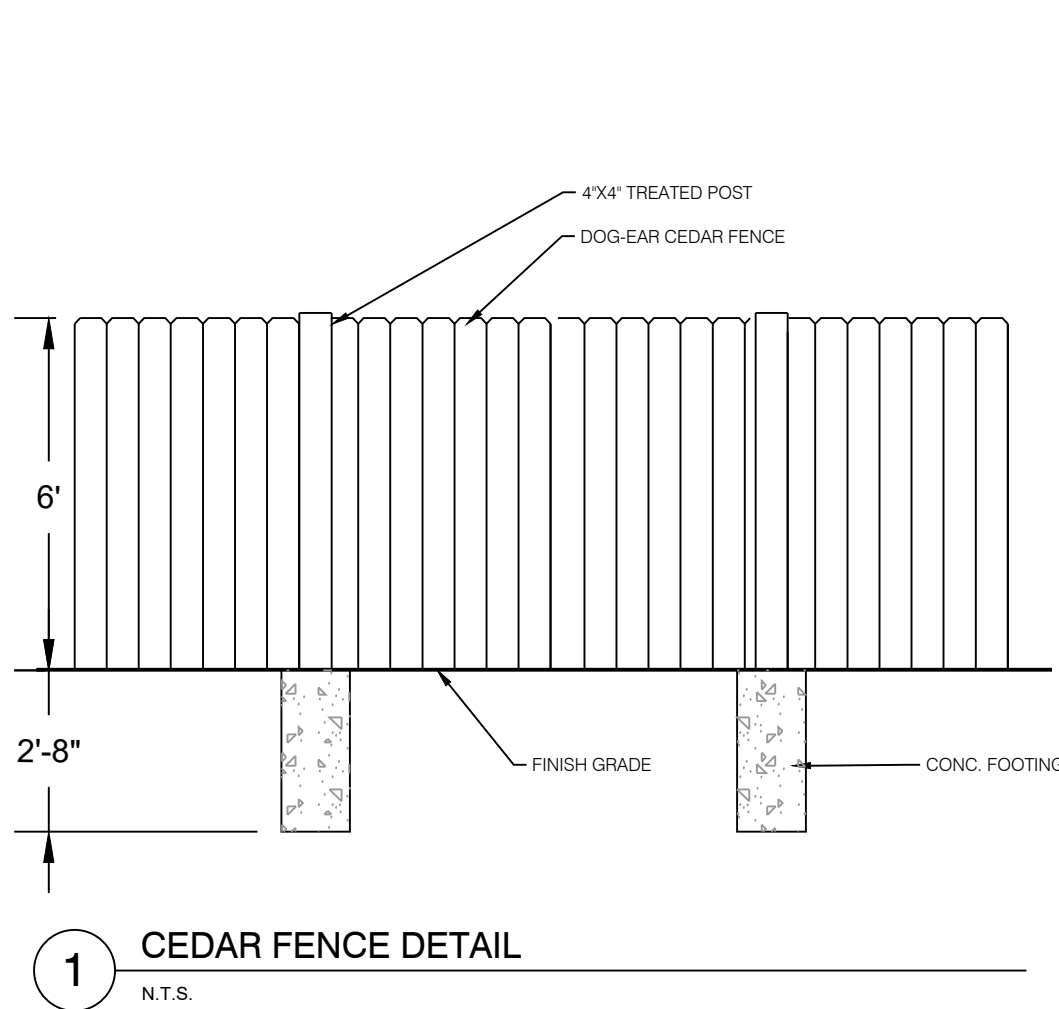
PLANT SCHEDULE

DECIDUOUS TREES	CODE	QTY	BOTANICAL / COMMON NAME	HEIGHT	WIDTH	SIZE	COND
	AXF	18	Acer x freemanii 'Jeffersred' TM / Autumn Blaze Maple	40'	30'	2" Cal.	B&B
	CO	17	Celtis occidentalis / Common Hackberry	40'	40'	1.5" Cal.	B&B
	CRC	5	Crataegus crus-galli / Cockspur Hawthorn	30'	25'	1.5" Cal.	B&B
	QRU	21	Quercus rubra / Red Oak	30-40'	35'	1.5" Cal.	B&B
EVERGREEN TREES	CODE	QTY	BOTANICAL / COMMON NAME	HEIGHT	WIDTH	SIZE	COND
	Pc	9	Picea pungens / Colorado Spruce	30'-60'	20'	6' HT	B&B
	Pp2	37	Pinus ponderosa / Ponderosa Pine	15-20'	20'	6' HT	B&B

HATCH LEGEND

	ROCK MULCH 1-1/2" NORTHERN RIVER ROCK	12,385 sf
	BLUEGRASS SOD	42,762 sf
	EPC CONSERVATION DISTRICT ALL PURPOSE MIX GENERAL SEED MIX: Seed Rate: 9.7 lbs PLS/acre 20% Andropogon gerardii 10% Bouteloua gracilis 10% Nassella viridula 20% Pascopyrum smithii 10% Bouteloua curtipendula 10% Panicum virgatum 10% Calamovilfa longifolia 10% Sorghastrum nutans	59,561 sf
	EPC ALL PURPOSE LOW GROW MIX Seed at 42 lbs/Acre General Seed Mix: 25% Buchloe dactyloides 20% Bouteloua gracilis 20% Bouteloua curtipendula 5% Nassella viridula 20%Pascopyrum smithii 1% Sporobolus cryptandrus	252,789 sf

- SEED MAINTENANCE: MOW LOW GROW MIX ABOUT 1/2 THE AMOUNT AS SODDED TURFGRASS OR AS NEEDED. MOW NATIVE/FOOTHILLS SEED AREAS ONCE A MONTH OR ONLY WHEN NEEDED TO CONTROL WEEDS OR AT END OF GROWING SEASON.
- MOW LOW GROW SEED MIX TO A 4" HEIGHT AND LET NATIVE SEED MIX GROW TO 8"-16" HEIGHT. HAND PULL WEED OR SPOT WEED USING A BROADLEAF APPLICATION DURING FIRST 3 GROWING SEASONS.
- DISTURBED AREAS TO BE RESEEDED WITH NATIVE LOW GROW MIX UNLESS OTHERWISE NOTED. RE: CIVIL PLANS



N.E.S. Inc.
619 N. Cascade Avenue, Suite 200
Colorado Springs, CO 80903

Tel. 719.471.0073
Fax 719.471.0267

www.nescolorado.com

© 2012, All Rights Reserved.

FALCON MEADOWS AT BENT GRASS FILING 1 LANDSCAPE PLAN

DATE: 3/25/2021
PROJECT MGR: B. SWENSON
PREPARED BY: K. ANTAL

LANDSCAPE DETAILS & NOTES

1 OF 2

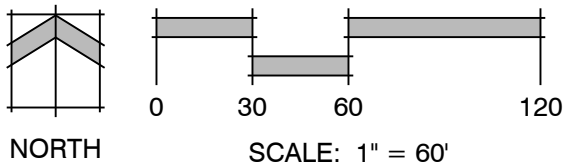


PLANT SCHEDULE

DECIDUOUS TREES	CODE	QTY	BOTANICAL / COMMON NAME	HEIGHT	WIDTH	SIZE	COND
	AXF	18	Acer x freemanii 'Jeffsred' TM / Autumn Blaze Maple	40'	30'	2" Cal.	B&B
	CO	17	Celtis occidentalis / Common Hackberry	40'	40'	1.5" Cal.	B&B
	CRC	5	Crataegus crus-galli / Cockspur Hawthorn	30'	25'	1.5" Cal.	B&B
	QRU	21	Quercus rubra / Red Oak	30-40'	35'	1.5" Cal.	B&B
EVERGREEN TREES	CODE	QTY	BOTANICAL / COMMON NAME	HEIGHT	WIDTH	SIZE	COND
	Pc	9	Picea pungens / Colorado Spruce	30'-60'	20'	6' HT	B&B
	Pp2	37	Pinus ponderosa / Ponderosa Pine	15-20'	20'	6' HT	B&B

HATCH LEGEND

	ROCK MULCH 1-1/2" NORTHERN RIVER ROCK	12,385 sf
	BLUEGRASS SOD	42,762 sf
	EPC CONSERVATION DISTRICT ALL PURPOSE MIX GENERAL SEED MIX: Seed Rate: 9.7 lbs PLS/acre 20% Andropogon gerardii 10% Bouteloua gracilis 10% Nassella viridula 20% Pascopyrum smithii 10% Bouteloua curtipendula 10% Panicum virgatum 10% Calamovilfa longifolia 10% Sorghastrum nutans	59,561 sf
	EPC ALL PURPOSE LOW GROW MIX Seed at 42 lbs/Acre General Seed Mix: 25% Buchloe dactyloides 20% Bouteloua gracilis 29% Bouteloua curtipendula 5% Nassella viridula 20% Pascopyrum smithii 1% Sporobolus cryptandrus	252,789 sf



Land Planning
Landscape
Architecture
Urban Design

NES

N.E.S. Inc.
619 N. Cascade Avenue, Suite 200
Colorado Springs, CO 80903
Tel. 719.471.0073
Fax 719.471.0267
www.nescolorado.com
© 2012. All Rights Reserved.

FALCON
MEADOWS AT
BENT GRASS
FILING 1
LANDSCAPE PLAN

DATE:	3/25/2021
PROJECT MGR:	B. SWENSON
PREPARED BY:	K. ANTAL

DATE:	BY:	DESCRIPTION:
7/16/2021	JBS	PER COUNTY COMMENTS

FILING 1
LANDSCAPE PLAN

2
2 OF 2