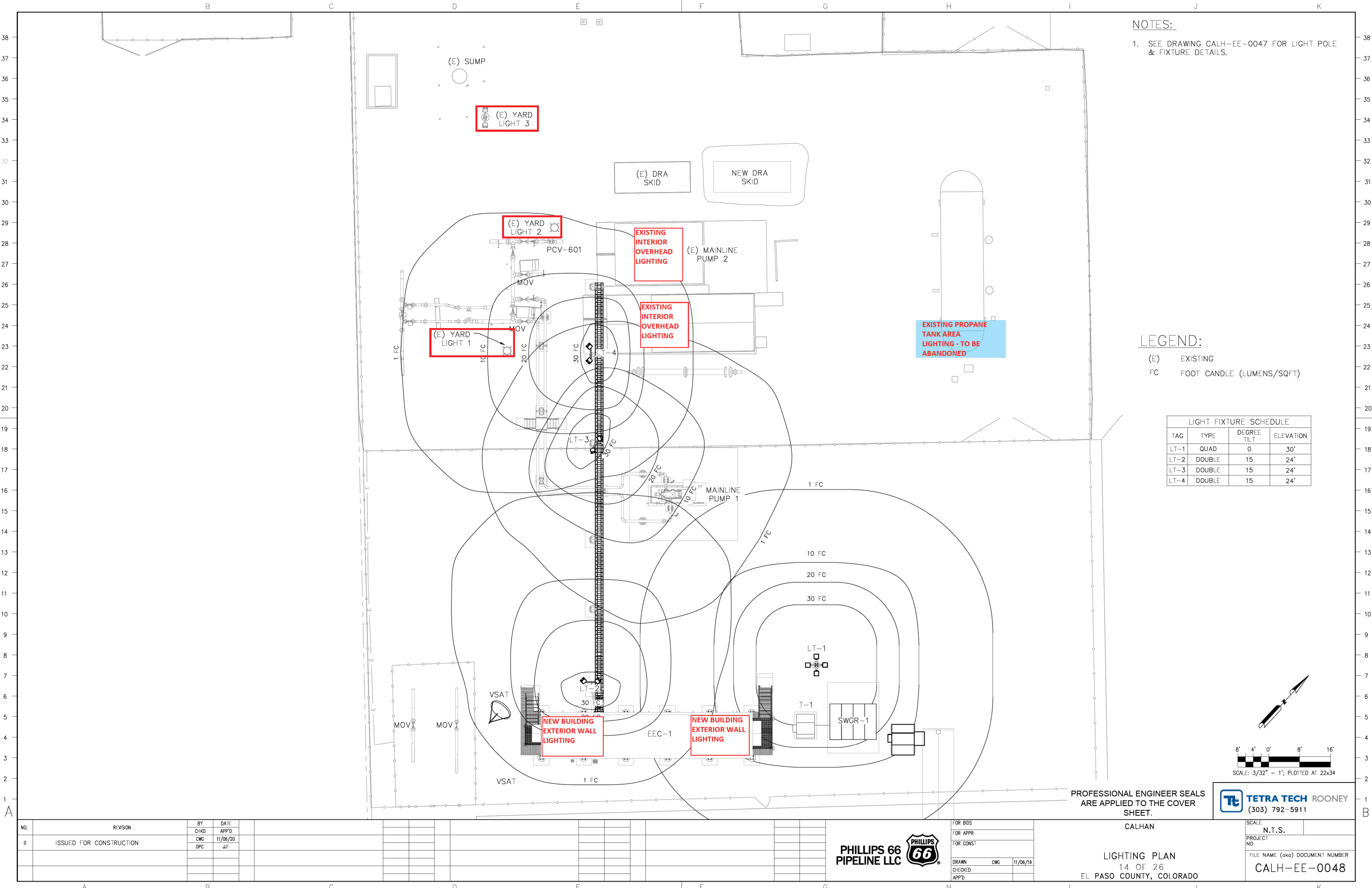




FOR REFERENCE ONLY - OFFICIAL DOCUMENT STORED ELECTRONICALLY  
PLOT DATE = 11/14/20  
PLOTTED BY : CHASE GIFFORD  
FILE NAME : C:\WORKING\REV\DWG\36215\CALH-EE-0048.DWG



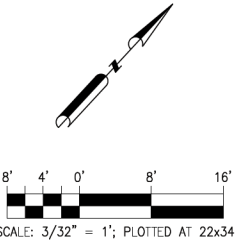
NOTES:

1. SEE DRAWING CALH-EE-0047 FOR LIGHT POLE & FIXTURE DETAILS.

LEGEND:

- (E) EXISTING  
FC FOOT CANDLE (LUMENS/SQFT)

LIGHT FIXTURE SCHEDULE			
TAG	TYPE	DEGREE TILT	ELEVATION
LT-1	QUAD	0	30'
LT-2	DOUBLE	15	24'
LT-3	DOUBLE	15	24'
LT-4	DOUBLE	15	24'



SCALE: 3/32" = 1'; PLOTTED AT 22x34

PROFESSIONAL ENGINEER SEALS  
ARE APPLIED TO THE COVER  
SHEET.

**TETRA TECH** ROONEY  
(303) 792-5911

CALHAN



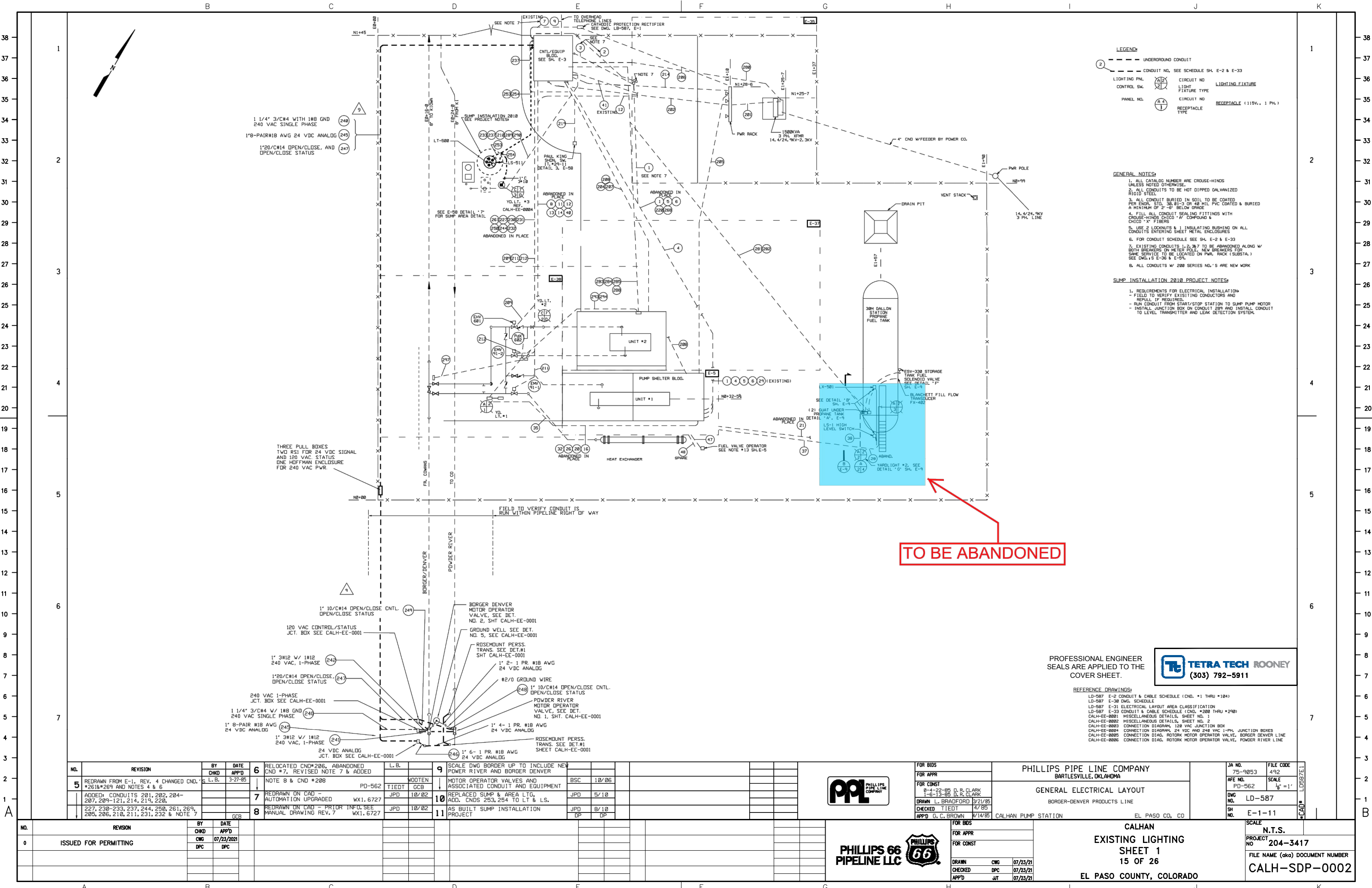
FOR BIDS	
FOR APPR	
FOR CONST	
DRAWN	CWG
CHECKED	11/06/19
APP'D	

LIGHTING PLAN  
14 OF 26  
EL PASO COUNTY, COLORADO

SCALE	N.T.S.
PROJECT NO	
FILE NAME (aka) DOCUMENT NUMBER	CALH-EE-0048

NO.	REVISION	BY	DATE
0	ISSUED FOR CONSTRUCTION	CHKD CWG DPC	APP'D 11/06/20 JIT

FOR REFERENCE ONLY - OFFICIAL DOCUMENT STORED ELECTRONICALLY PLOT DATE = 7/29/21 PLOTTED BY : CHASE GIFFORD FILE NAME : C:\WORKING\REVIEWS\36215\CALHAN PERMIT PLUNG.DWG



TO BE ABANDONED

PROFESSIONAL ENGINEER  
SEALS ARE APPLIED TO THE  
COVER SHEET.



REFERENCE DRAWINGS:  
LD-587 E-2 CONDUIT & CABLE SCHEDULE (CND. #1 THRU #184)  
LD-587 E-30 DWG. SCHEDULE  
LD-587 E-31 ELECTRICAL LAYOUT AREA CLASSIFICATION  
LD-587 E-32 CONDUIT & CABLE SCHEDULE (CND. #200 THRU #240)  
CALH-EE-0001 MISCELLANEOUS DETAILS, SHEET NO. 1  
CALH-EE-0002 MISCELLANEOUS DETAILS, SHEET NO. 2  
CALH-EE-0003 CONNECTION DIAGRAM, 120 VAC JUNCTION BOX  
CALH-EE-0004 CONNECTION DIAGRAM, 24 VDC AND 240 VAC 1-PH. JUNCTION BOXES  
CALH-EE-0005 CONNECTION DIAG. ROTORK MOTOR OPERATOR VALVE, BORDER DENVER LINE  
CALH-EE-0006 CONNECTION DIAG. ROTORK MOTOR OPERATOR VALVE, POWDER RIVER LINE

NO.	REVISION	BY	DATE	6	RELOCATED CND#206, ABANDONED CND #7, REVISED NOTE 7 & ADDED	L.B.	9	SCALE DWG BORDER UP TO INCLUDE NEW POWER RIVER AND BORDER DENVER
5	REDRAWN FROM E-1, REV. 4 CHANGED CND. #261&#269 AND NOTES 4 & 6	CHD	3-27-85	6	RELOCATED CND#206, ABANDONED CND #7, REVISED NOTE 7 & ADDED	WOOTEN	9	SCALE DWG BORDER UP TO INCLUDE NEW POWER RIVER AND BORDER DENVER
	ADDED: CONDUITS 201, 202, 204-207, 209-121, 214, 219, 220,	APP'D		7	REDRAWN ON CAD - AUTOMATION UPGRADED	TIEDT	10	REPLACED SUMP & AREA LTG. ADD. CND#S 253, 254 TO LT & LS.
	227, 230-233, 237, 244, 250, 261, 269, 285, 286, 210, 211, 231, 232 & NOTE 7	CHG	07/23/2021	8	REDRAWN ON CAD - PRIOR INFO. SEE MANUAL DRAWING REV. 7	JPD	11	AS BUILT SUMP INSTALLATION PROJECT



FOR BIDS	FOR APPR	FOR CONST
75-9853	75-9853	75-9853
492	492	492
SCALE	SCALE	SCALE
1/8" = 1'	1/8" = 1'	1/8" = 1'

PHILLIPS PIPE LINE COMPANY  
BARTLESVILLE, OKLAHOMA

GENERAL ELECTRICAL LAYOUT  
BORDER-DENVER PRODUCTS LINE

JA NO. 75-9853  
FILE CODE 492

PD-562  
LD-587

SH NO. E-1-11



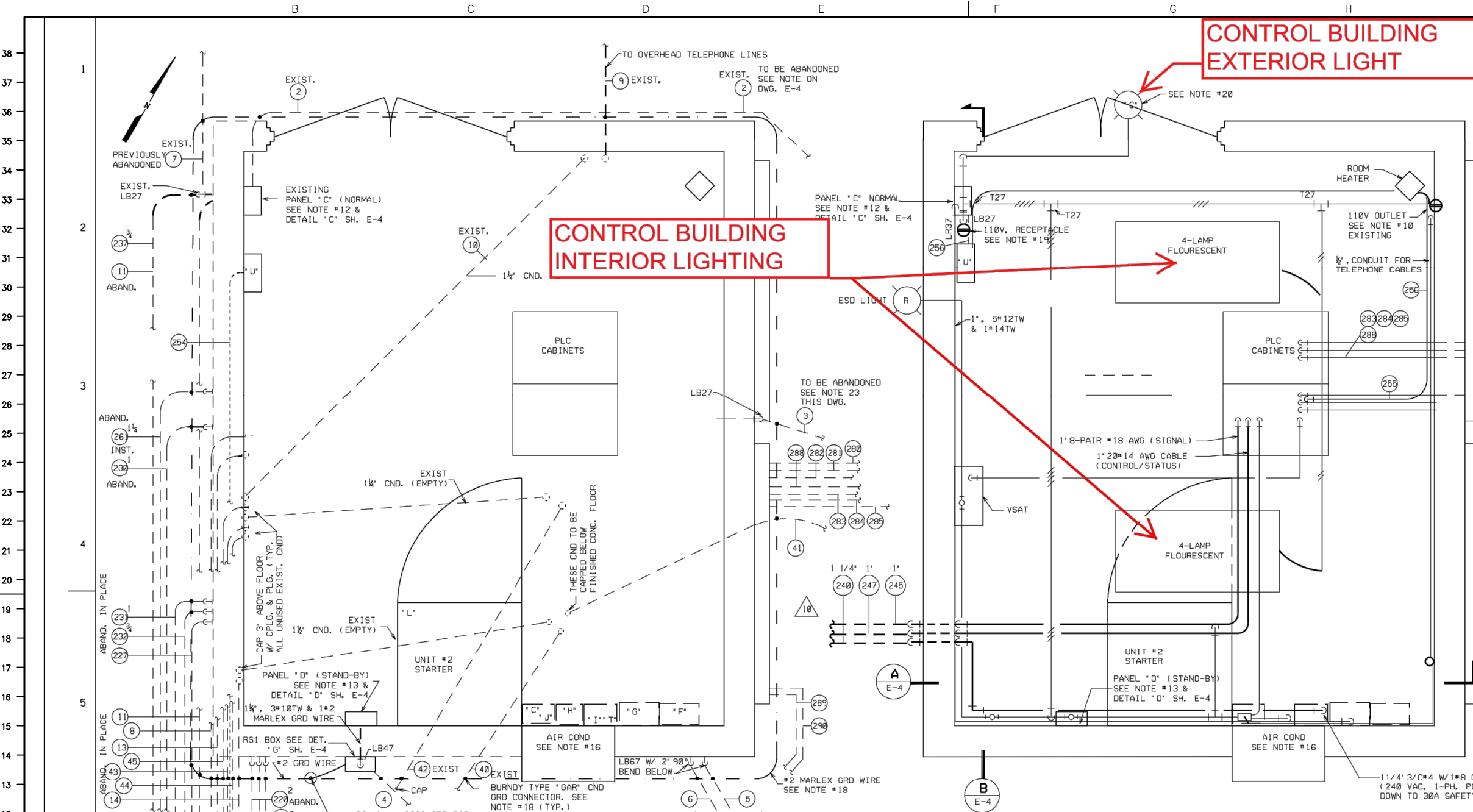
FOR BIDS	FOR APPR	FOR CONST
75-9853	75-9853	75-9853
492	492	492
SCALE	SCALE	SCALE
1/8" = 1'	1/8" = 1'	1/8" = 1'

CALHAN  
EXISTING LIGHTING  
SHEET 1  
15 OF 26  
EL PASO COUNTY, COLORADO

N.T.S.  
PROJECT NO. 204-3417  
FILE NAME (aka) DOCUMENT NUMBER  
CALH-SDP-0002



FOR REFERENCE ONLY - OFFICIAL DOCUMENT STORED ELECTRONICALLY PLOT DATE = 7/29/21 PLOTTED BY : CHASE GIFFORD FILE NAME : C:\WORKING\REVIEWS\36215\CALHAN PERMIT FILINGS.DWG



CONTROL BUILDING EXTERIOR LIGHT

CONTROL BUILDING INTERIOR LIGHTING

- NOTES:**
1. ALL CONDUITS TO BE HOT DIPPED GALVANIZED RIGID STEEL.
  2. ALL FITTINGS TO BE CROUSE-HINDS UNLESS OTHERWISE SPECIFIED.
  3. ALL EXPOSED CONDUIT RUNS TO BE FASTENED TO BLDG. WITH 1-HOLE MALLEABLE CLAMPS
  4. PLUG ALL UNUSED CONDUIT OPENINGS
  5. USE 2-LOCKNUTS & 1 INSULATED BUSHING ON ALL CONDUIT ENTERING SHEET METAL ENCLOSURES
  6. ALL CONDUIT BURIED IN SOIL TO BE COATED PER ENGR. STD. 30,01-3 & BURIED A MINIMUM OF 2'-6" BELOW GRADE.
  9. LIGHT SWITCHES ARE BRYANT CAT.#4621 TUMBLER SWITCH, SINGLE POLE, 15AMP, 115 VOLT, 1 PH. INSTALLED IN APPLETON HANDY CONDUIT BOXES CAT.#4SSL-3/4 W/2594 COVER, MOUNT 4'-6" ABOVE FLOOR.
  10. CONVENIENCE OUTLETS ARE GENERAL ELECTRIC CAT.#GE2679 INSTALLED IN SP5800 BOX W/SP58R7 COVER, FIXTURE TYPE #1
  12. LIGHTING PANEL 'C' IF FEDERAL CAT.#108 W/ 1-20 AMP, DOUBLE POLE BREAKER AND 4-20 AMP, BREAKERS. (FOR WIRING DIAG. SEE SH. E-18)
  13. LIGHTING PANEL 'D' IS SQUARE 'D', CAT.#008S GENERAL PURPOSE SURFACE MOUNTED WITH 8\*00115, 15 AMP, SINGLE POLE BREAKERS, IT.#PD-496-0-290-10 (FOR WIRING DIAG. SEE SH. E-18)
  16. AIR CONDITIONER IS AMANA MODEL #212-3U, 12,500 BTU, 9.5 AMP @ 230 VOLTS, 1 PH. ITEM #PD-496-0-600-1
  18. BOND ALL CONDUITS LEAVING CONTROL BUILDING W/ #2 MARLEX TR-201 GREEN INSULATION STRANDED COPPER WIRE AND BURNDY TYPE 'GAR' CND GRD CONNECTORS
  19. NEW 110V. RECEPTACLES ARE BRYANT CAT.#5262 DUPLEX, 20 AMP, 125 VOLT, 1 PH., 3 WIRE W/ GRD CONTACT INSTALL IN APPLETON #4SSL-3/4 HANDY BOX APPLETON #2510 COVER, MOUNT 2'-6" ABOVE FLOOR, FIXTURE #3
  20. LIGHT 'C' APPLETON SEPERABLE SERIES CAT.#G-82518 FLAT CONE REFLECTOR UNIT COMPLETE W/REFLECTOR, OUTLET BOX HOOD & SOCKET, & 200 W LAMP, MOUNT TO APPLETON #4CDD-3/4 4" OCT. BOX
  23. CONDUIT #3 TO BE DISCONNECTED & CAPPED NEAR GRADE OUTSIDE EAST WALL OF CNTL/EQUIP. BLDG. OPENING IN EAST WALL TO BE SEALED W/ MORTAR OR OTHER ACCEPTABLE COMPOUND.

PROFESSIONAL ENGINEER  
SEALS ARE APPLIED TO THE  
COVER SHEET.

**TETRA TECH ROONEY**  
(303) 792-5911

- LEGEND:**
- #2 MARLEX TR-201 GREEN INSULATION STRANDED COPPER GROUND WIRE
  - EXPOSED CND, 1/2" UNLESS OTHERWISE NOTED.
  - CONDUIT UNDER SLAB OR GROUND CONDUIT NO.
  - HASH MARKS INDICATES NO. OF #12 TW ENCLOSED
- REF. DWG.'S**
- E-4 ELECTRICAL DETAILS #1
  - E-59 ELECT. LAYOUT - CNTL/EQUIP BLDG.
  - E-60 ELECT. DETAILS #2 CNTL/EQUIP. BLDG.

FOR CONDUIT SCHEDULE & REFERENCE DRAWINGS SEE SH. E-2, E-33

**NOTES: (CONTINUED)**

- \*C\* POWER DUCT 6"x6"x5', SQUARE 'D', WITHOUT KNOCKOUTS
- \*D\* LIGHTING PANEL 'D' (EXISTING) SQUARE 'D' CAT.#008S GENERAL PURPOSE SURFACE MOUNTED W/8\*00115, 15 AMP, SINGLE POLE BREAKERS.
- \*E\* CONTROL EQUIPMENT DISTRIBUTION PANEL SQUARE 'D' CAT.#0016M1005 (IT.#29-20)
- \*F\* SUMP PUMP STARTER, WESTINGHOUSE AC COMBINATION FULL VOLTAGE STARTER, CAT.#A206JOMUA-C-R-T6 W/7MCP 1 HP, 230V, 3 PH., 3 POLE, 3.1FLA, 120C CONTROL XFMR, AMBIENT TEMP. COMP. O.L. RELAY BLOCK TYPE A W/EXTERNAL RESET P.B., NEMA 12 (IT#27-01)
- \*G\* 5HP HYDRAULIC VALVE PUMP STARTER, WESTINGHOUSE AC COMBINATION FULL VOLT STARTER, CAT.#A206JIMDA-C-R-T6, 5HP, 230V, 3 PH., 3 POLE, 15.2FLA, 22,000 INTERRUPTING RATING @ 230V W. 120V CONTROL, EXTERNAL RESET & CONTROL XFMR, NEMA 12, AMBIENT COMPENSATED BLOCK, TYPE A O.L. RELAY'S W/EXTERNAL RESET PUSHBUTTONS (IT.#27-02)
- \*H\* CIRCUIT BRKR THERMAL MAGNETIC, SQUARE 'D' CAT.#FAL34020, 480V, 3 PH., 3 POLE, 100A FRAME/20A TRIP, MOUNTED IN NEMA 12 ENCL. CAT.#FA100AWK (IT.#29-10)
- \*J\* SAME AS 'H' ABOVE (IT.#29-13)
- \*L\* 600HP, 2300V, NEMA 1, FULL VOLTAGE NON-REVERSING INDUCTION MOTOR STARTER W/360A AIR BREAK MAGNETIC CONTACTOR, SIEMENS-ALLIS SERIER 813534092A3L, 5KV, OVERLOADS TYPE S-A-RQ21, 2 KYA CONTROL XFMR (IT.#27-2)
- \*T\* CIRCUIT BRKR, SQUARE 'D' THERMAL MAGNETIC, CAT.#FAL34070, 400V, 3 PH., 3 POLE, 100A FRAME/70A TRIP, 18,000A INTERRUPTING RATING @ 240V, MOUNTED IN NEMA 12 ENCLOSURE, CAT.#FA100AWK WITHOUT KNOCKOUTS (IT.#29-19)

NO.	REVISION	BY	CHKD	DATE	APP'D
1	ADDED LIGHT 'C' & NOTE #20	J.A.B.	SJM	4/63	
2	REVISED HEATER DESCRIPTION	MUNN	HW	5/63	
3	CHANGED # OF WIRES IN CND #6	POTTS	HW	6/63	

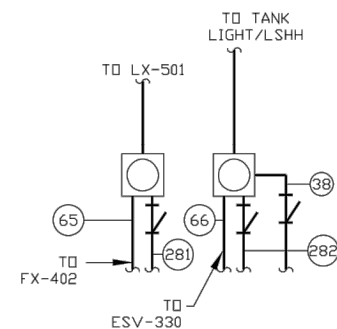
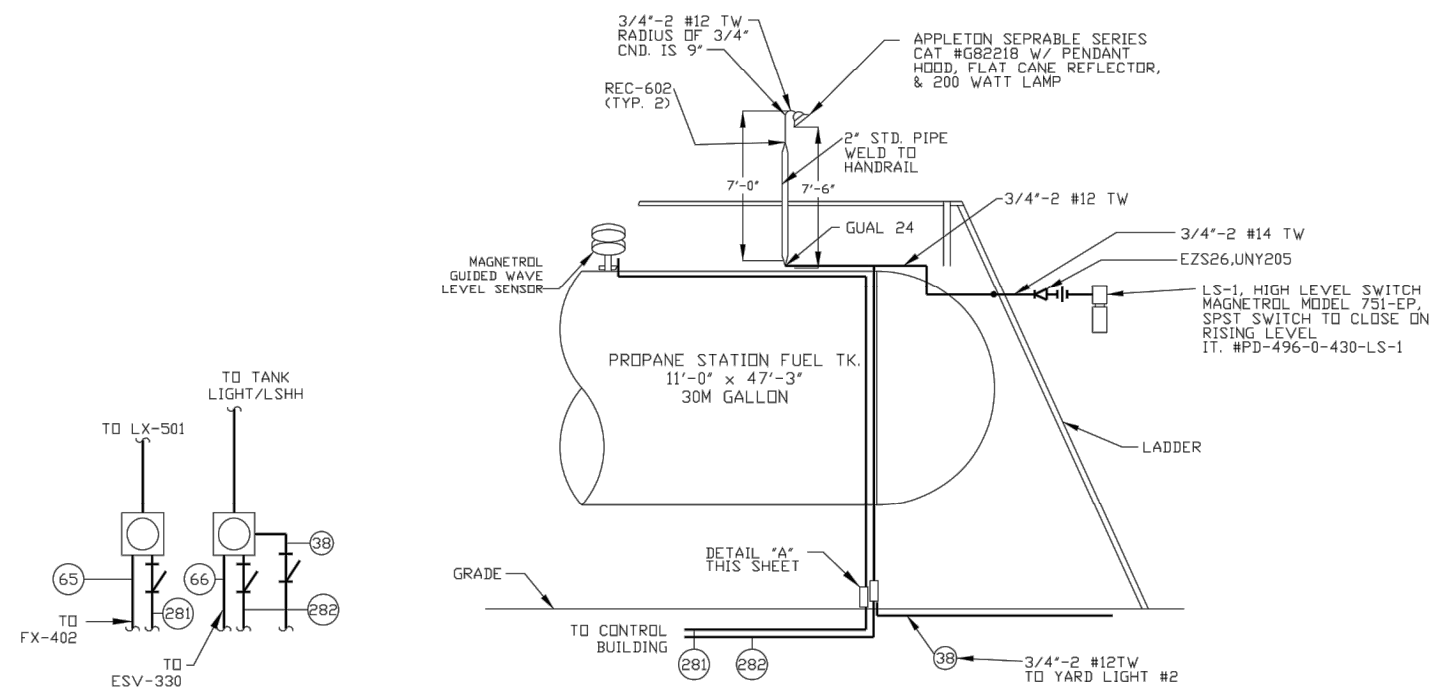
4	REMOVED TEMP 1 1/2" CND & TEL HORN ADDED BAT. CHARGER PD-496	JAB	SJM	9/63	
5	REVISED PER RESURVEY	JAB	SJM	11/64	
6	RELOCATED BATT. RACK & A.C. REMOVED LPG HTR., ADDED NOTES 22, 23, & 24	L.B.	TIEDT	4/85	
7	REDRAWN ON CAD - AUTOMATION UPGRADED	JPD	JPD	10/02	
8	REDRAWN ON CAD - ADDED INFO FROM E-59 (VOID), PRIOR INFO MAN. R/W 1.7672	JPD	JPD	10/02	
9	REVISED PER FIELD WALK-DOWN	JPD	BSC	8/03	
10	ADDED CND 240, 245 AND 247	JPD	BSC	10/06	
11	ADDED ITEM 'U', CND 254, 255	JPD	JPD	5/10	
12	AS-BUILT SUMP INSTALLATION PROJECT	JPD	DP	8/10	

NO.	REVISION	BY	CHKD	DATE	APP'D
0	ISSUED FOR PERMITTING	CWG	DPF	07/23/2021	

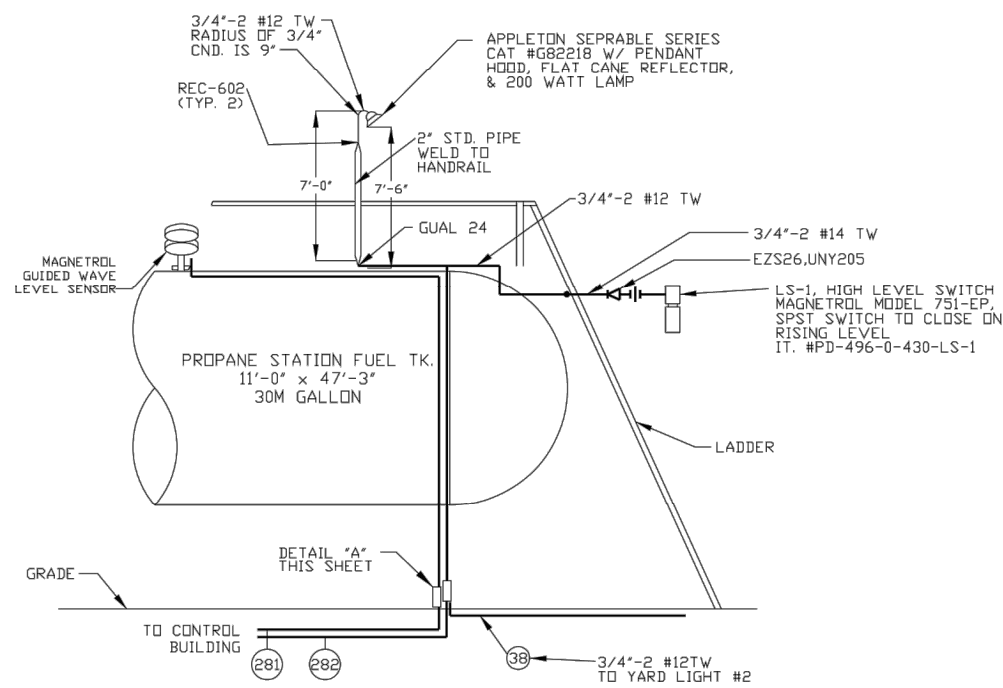


FOR BIDS FOR APPR FOR CONST	PHILLIPS PIPE LINE COMPANY BARTLESVILLE, OKLAHOMA PROPOSED ELECTRICAL LAYOUT CNTL/EQUIP BLDG. CALHAN PUMP STATION BORGER-DENVER PIPELINE EL PASO CO, COLORADO	JA NO. PD-496 AFF NO. DWG NO. LD-587 SH NO. E-3-12	FILE CODE SCALE 3/4" = 1' LDSB7E3
FOR BIDS FOR APPR FOR CONST	PHILLIPS 66 PIPELINE LLC	SCALE N.T.S. PROJECT NO. 204-3417 FILE NAME (aka) DOCUMENT NUMBER CALH-SDP-0003	

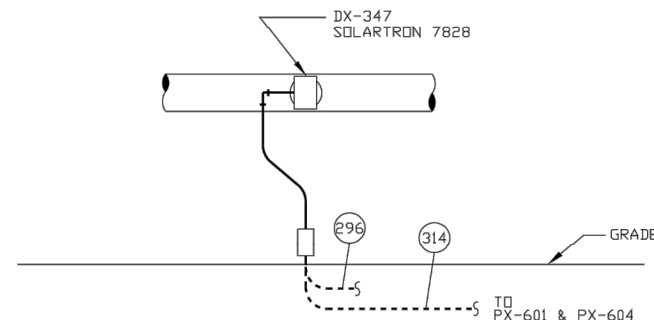




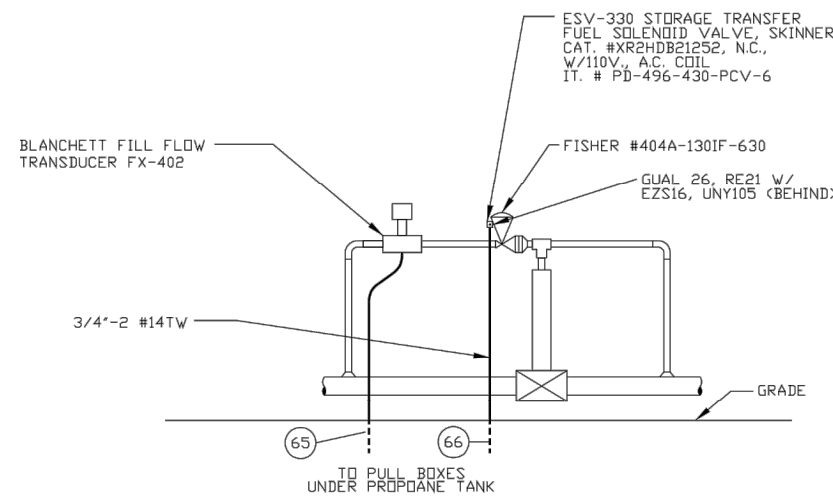
DETAIL "A"  
NORTH ELEVATION  
PULL-BOXES UNDER PROPANE TANK



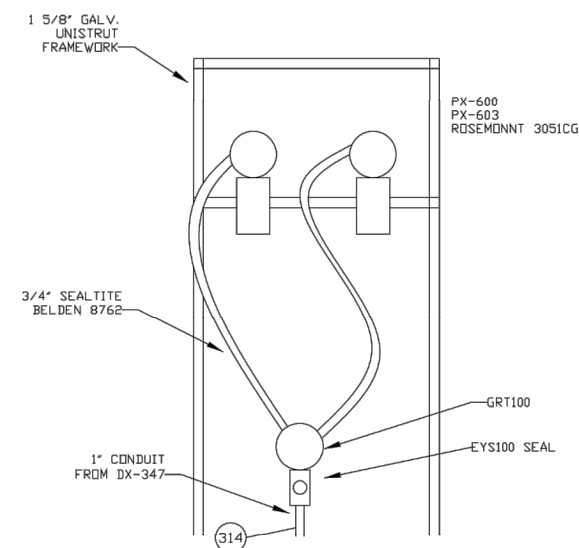
DETAIL "B"  
STATION PROPANE FUEL TANK  
SEE SHEET E-1  
NO SCALE



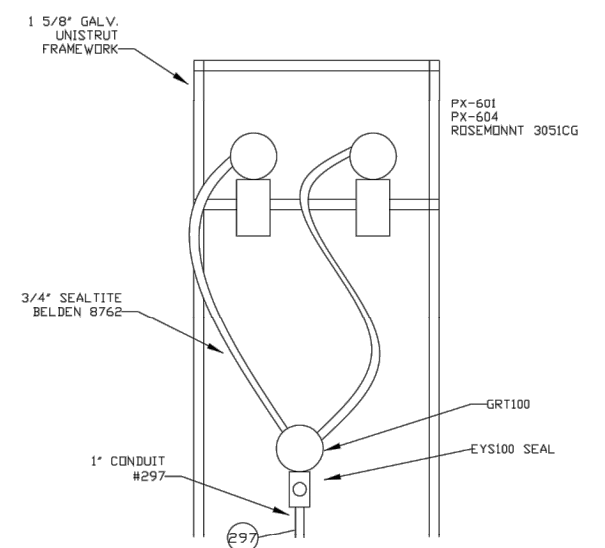
DETAIL "E"  
SOLARTRON DENSITY TRANSMITTER  
SEE SHEET E-38  
NO SCALE



DETAIL "F"  
E.M.V.-1 STORAGE TRANSFER FUEL SOLENOID VALVE  
SEE SHEET E-1  
NO SCALE

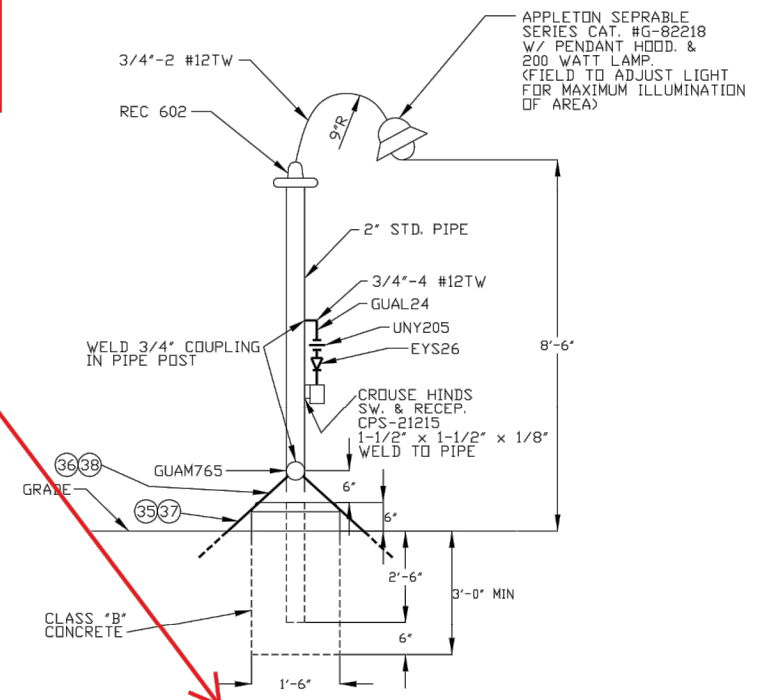


DETAIL "C"  
SUCTION LINE PRESSURE TRANSMITTERS  
SEE SHEET E-38  
NO SCALE



DETAIL "D"  
HIGH DISCHARGE PRESSURE TRANSMITTER  
SEE SHEET E-38  
NO SCALE

## LIGHTING AT PROPANE TANK TO BE ABANDONED



DETAIL "G"  
YARDLIGHT MOUNTING  
SEE SHEET E-1  
NO SCALE  
(TYPICAL FOR TWO)



PROFESSIONAL ENGINEER  
SEALS ARE APPLIED TO THE  
COVER SHEET.

NO.	REVISION	BY	DATE
		CHKD	APP'D
1	Redrawn	MD	10/20/01

BY	DATE
CHKD	APP'D
CWG	07/23/2021
DPC	DPC

	REVISION
	ISSUED FOR PERMITTING

FOR BIDS	
FOR APPR	
FOR CONST	
DRAWN BY KENT	1/85
CHECKED TIEDT	4/85
APP'D GC BROWN	4/85

FOR BIDS		
FOR APPR		
FOR CONST		
DRAWN	CWG	07/23/20
CHECKED	DPC	07/23/20
APP'D	LT	07/23/20

FOR CONDUIT SCHEDULE & REF DWGS SEE E-2, E-33

PHILLIPS PIPE LINE COMPANY  
BARTLESVILLE, OKLAHOMA

ELECTRICAL DETAILS

PUMP AREA  
BORGER - DENVER PRODUCT LINE  
CALHAN PUMP STATION EL PASO CO., CO.



PHILLIPS  
PIPE LINE  
COMPANY

JA NO. 75-9053	FILE CODE 492
AFF NO. PD-562	SCALE NONE
DWG NO. LD-587	
SH NO. E-9-4	

SCALE	
NTS	

PROJECT NO	204-3417
------------	----------

FILE NAME (aka) DOCUMENT NUMBER  
CALH-SDP-0005

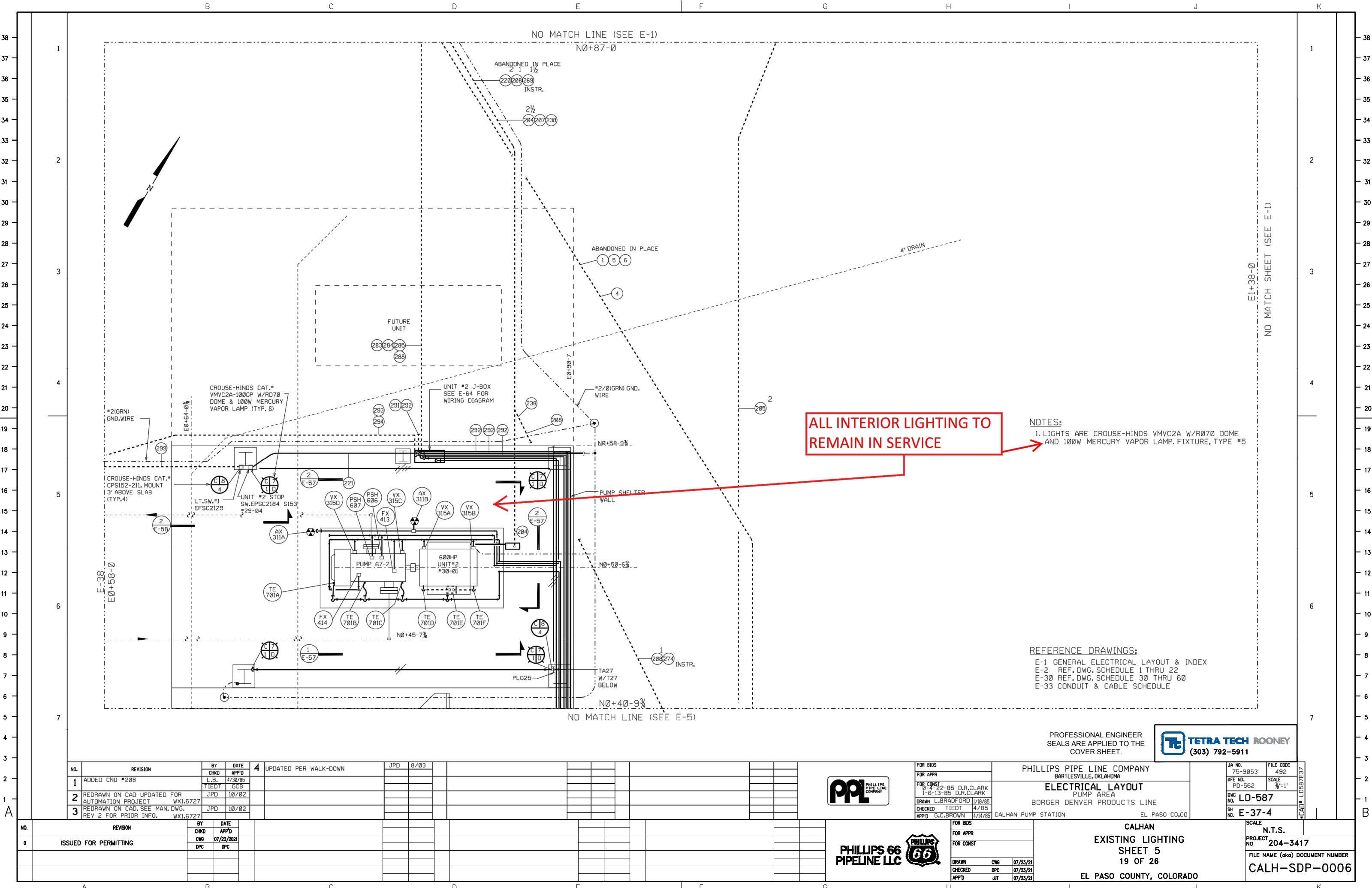
**PHILLIPS 66**  
**PIPELINE LLC**

CALHAN  
EXISTING LIGHTING  
SHEET 4  
18 OF 26

EL PASO COUNTY, COLORADO



FOR REFERENCE ONLY - OFFICIAL DOCUMENT STORED ELECTRONICALLY PLOT DATE = 7/29/21 PLOTTED BY : CHASE GIFFORD FILE NAME : C:\WORKING\REV\MS36215\CALHAN PERMIT PLUMB.DWG



ALL INTERIOR LIGHTING TO REMAIN IN SERVICE

NOTES:  
1. LIGHTS ARE CROUSE-HINDS VMVC2A W/R070 DOME AND 100W MERCURY VAPOR LAMP, FIXTURE, TYPE #5

REFERENCE DRAWINGS:  
E-1 GENERAL ELECTRICAL LAYOUT & INDEX  
E-2 REF. DWG. SCHEDULE 1 THRU 22  
E-30 REF. DWG. SCHEDULE 30 THRU 60  
E-33 CONDUIT & CABLE SCHEDULE

NO.	REVISION	BY	CHKD	DATE	APP'D
1	ADDED CND #208	L.B.	TIEDT	4/30/85	GCB
2	REDRAWN ON CAD UPDATED FOR AUTOMATION PROJECT	JPD		10/02	
3	REDRAWN ON CAD, SEE MAN. DWG. REV 2 FOR PRIOR INFO.	JPD		10/02	

NO.	REVISION	BY	CHKD	DATE	APP'D
0	ISSUED FOR PERMITTING	DPC		07/23/2021	DPC



FOR BIDS	
FOR APPR	
FOR CONST	
DRAWN	L.BRADFORD
CHECKED	TIEDT
APP'D	G.C.BROWN

PHILLIPS PIPE LINE COMPANY BARTLESVILLE, OKLAHOMA	JA NO. 75-9853	FILE CODE 492
ELECTRICAL LAYOUT PUMP AREA BORGER DENVER PRODUCTS LINE	AFE NO. PD-562	SCALE 3/8"=1'
CALHAN PUMP STATION EL PASO CO, CO	DWG NO. LD-587	SH NO. E-37-4



FOR BIDS	
FOR APPR	
FOR CONST	
DRAWN	CWG
CHECKED	DPC
APP'D	JT

CALHAN EXISTING LIGHTING SHEET 5 19 OF 26 EL PASO COUNTY, COLORADO
--

N.T.S. PROJECT NO. 204-3417 FILE NAME (aka) DOCUMENT NUMBER CALH-SDP-0006
--