

A B C D E F G H I J

SHIPPING SECTION
72.00 [1828.80]
APPROX. WT=8800 LBS
LESS VCBS

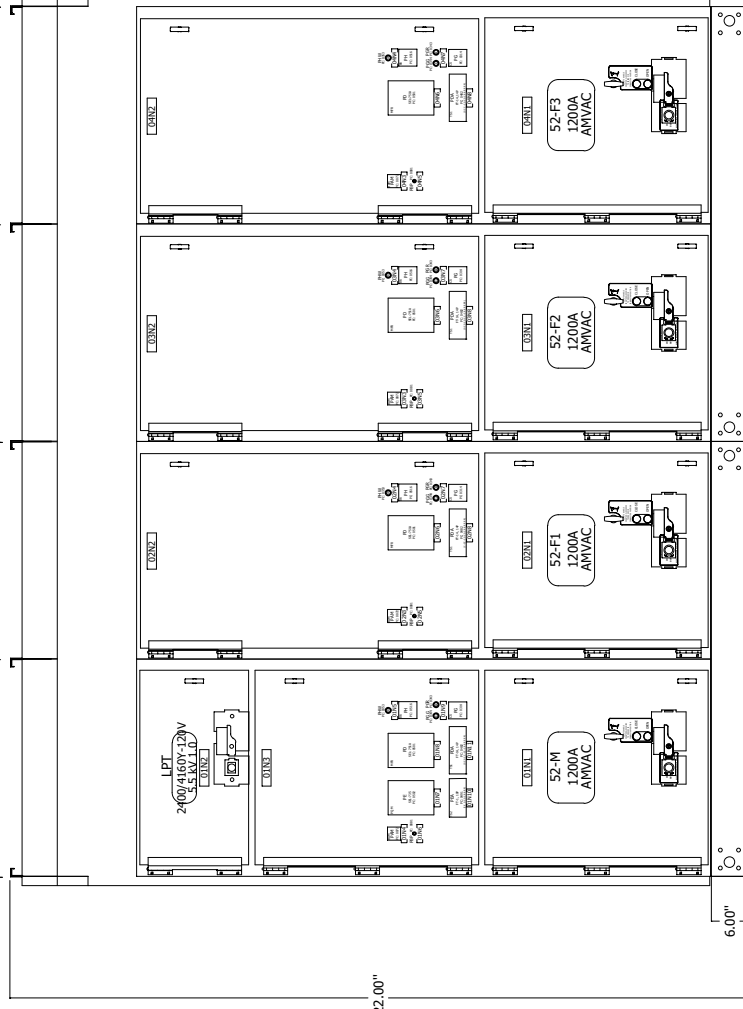
SHIPPING SECTION
72.00 [1828.80]
APPROX. WT=8800 LBS
LESS VCBS

36" [914.4 mm]

36" [914.4 mm]

36" [914.4 mm]

36" [914.4 mm]



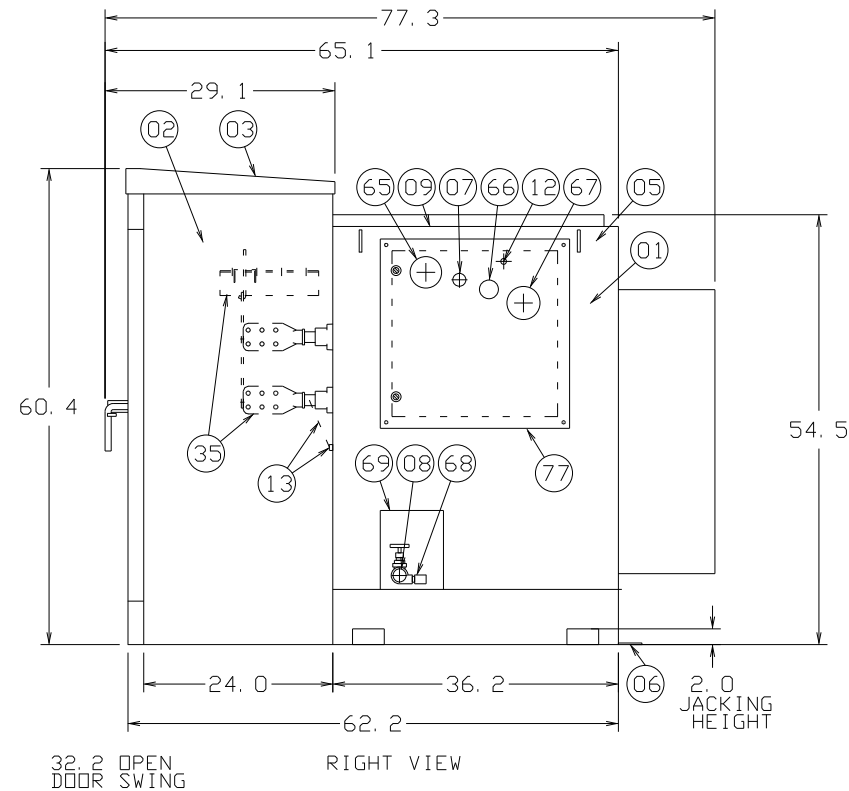
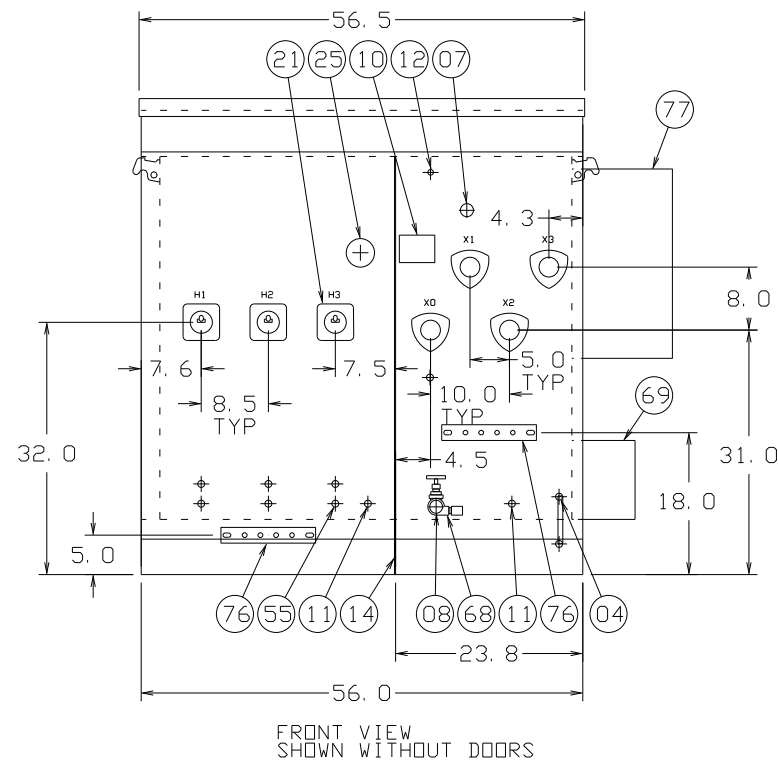
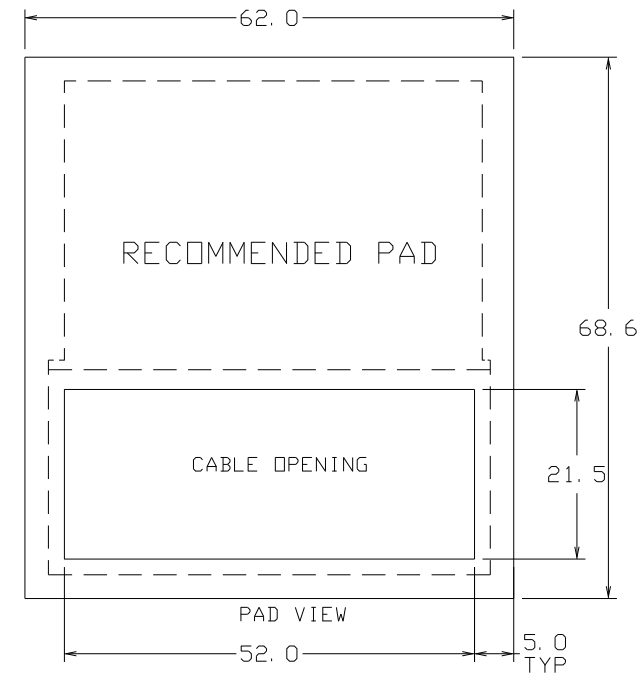
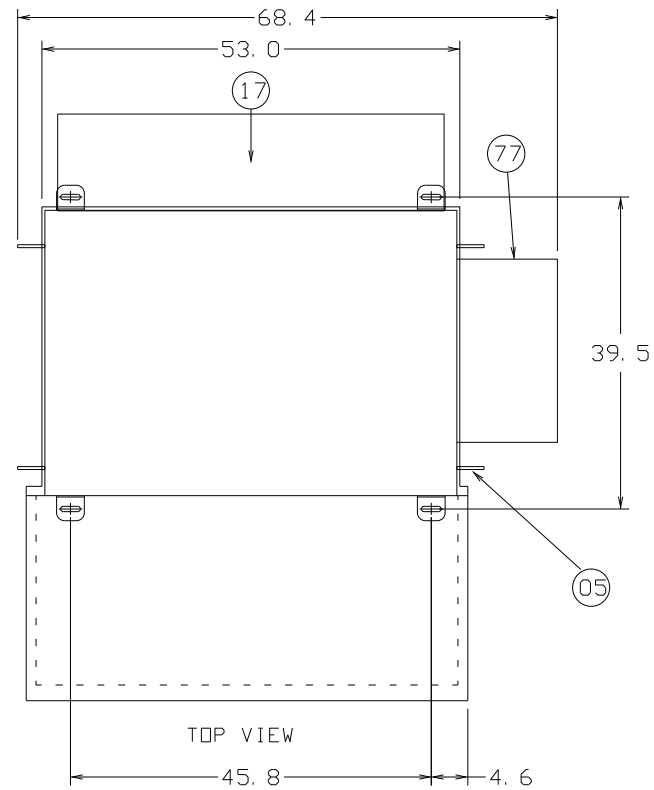
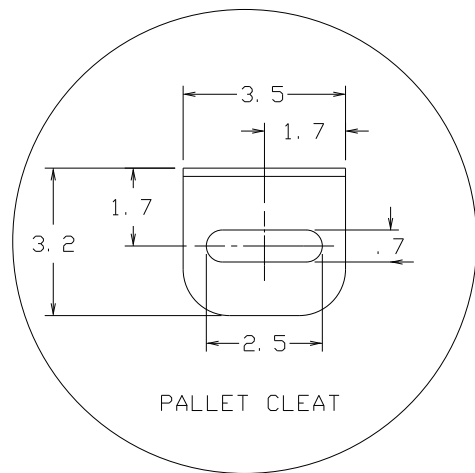
CUBICLE	01	02	03	04
...				

△																			
△																			
△																			
△																			
△																			
BY: CHD: DATE:		REVISED		NO:		CUST. P.O.: 4527266558		PH66 Calhan Station		Approved By:		Sold To:		ODNWI Advance, 8.25kV, 1200A, 40KA, 3PH-3W, 60Hz		FRONT VIEW		Rev:	
						SWGRI		APPROVED		Date:		Phillips 66 Pipeline LLC		SAP #:		03/07/2001		0	
						Drawn By:		Date:		Date:		PO Box 9000		Drawing Number:		196211D0001		Shop Order:	
						Date:		Date:		Date:		Barriesville, OK 74005		CS01962		A01		00	
						Date:		Date:		Date:		32795 US Highway 24		Released					
						Date:		Date:		Date:		Calhan, CO 80608							
						Date:		Date:		Date:		The information contained in this document may be used without confidential or proprietary information. All rights reserved.							

01
02
03
04
05
06
07
08
09
10
11
12
13
14

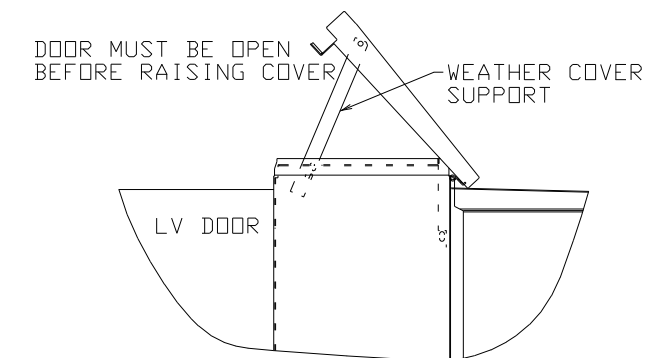
DOWNLOAD INSTRUCTION BOOKS AT WWW.ABB.COM/TRANSFORMERS
DESCARGAR LIBRO DE INSTRUCCIONES EN WWW.ABB.COM/TRANSFORMERS

THIS OUTLINE IS FOR ERECTION OR MOUNTING PURPOSES. IT IS NOT TO SCALE AND SHOULD NOT BE REGARDED AS INDICATING THE EXACT DETAILS OF CONSTRUCTION.



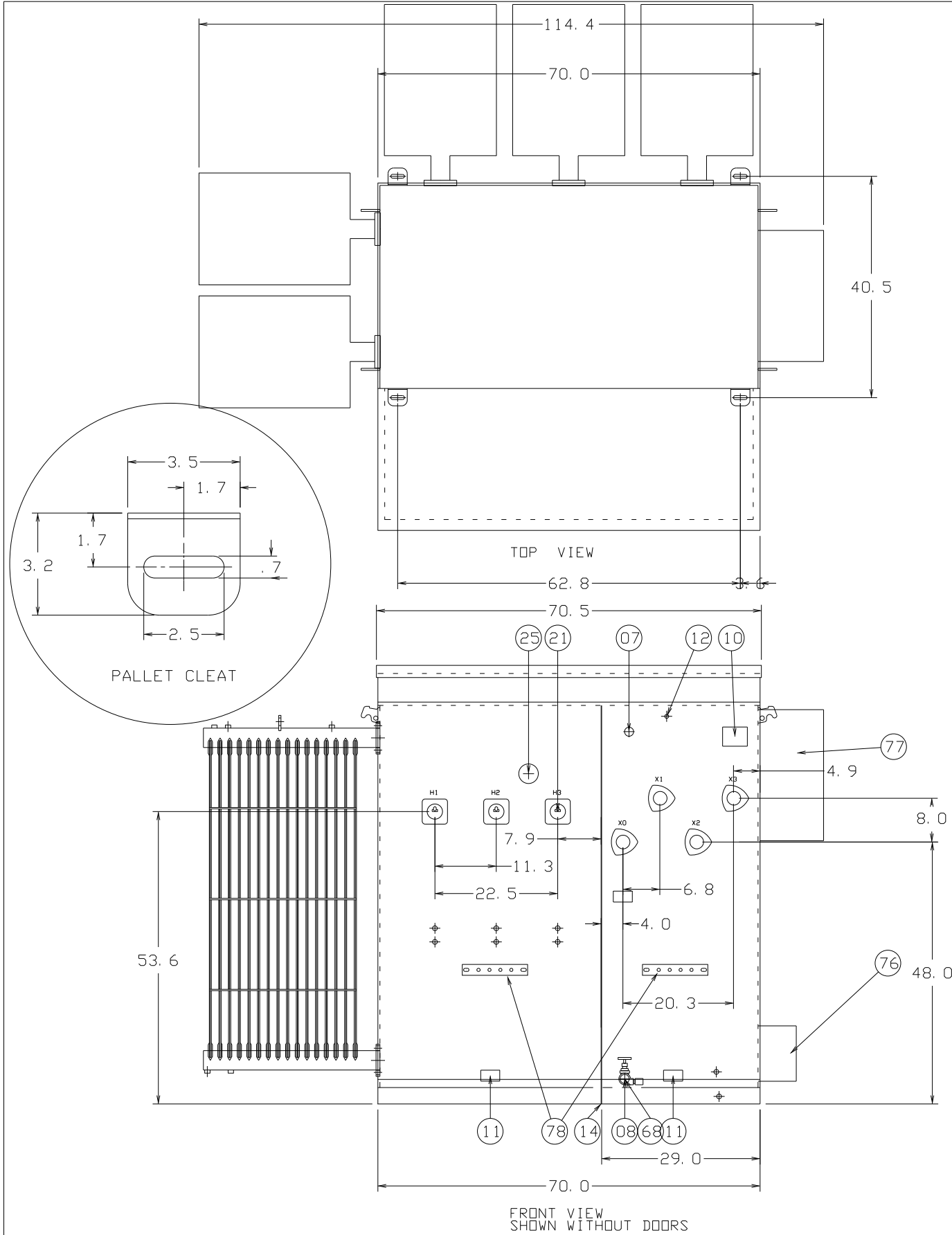
- 01 TANK
- 02 CABINET BOLTED-ON, REMOVABLE SILLS, OPEN BOTTOM 1.25 INCH FLANGE, HINGED LIFT-OFF DOOR, PROVISION FOR PADLOCK, STOP IN OPEN POSITION.
- 03 WEATHER COVER, REMOVABLE OR HINGED
- 04 TANK TO BASE GROUND STRAP AND PROVISIONS FOR TANK TO CABINET GROUND LIFTING HOOKS, 4 TOTAL
- 05 SHIPPING BRACKETS
- 07 1 INCH FILL PLUG WITH SCHRADER VALVE
- 08 1 INCH DRAIN PLUG
- 09 HANDHOLE, 9.5 INCH X 17.5 INCH, BOLTED-ON COVER
- 10 NAMEPLATE MOUNTED ON TANK WALL
- 11 GROUND PAD .50-13-TAP, HV AND LV COMPARTMENT
- 12 PRESSURE RELIEF DEVICE
- 13 LV NEUTRAL GROUND PAD .50-13-TAP WITH GROUND STRAP
- 14 HV/LV BARRIER (STEEL)
- 17 REAR COOLER
- 21 HIGH VOLTAGE BUSHING, PORCELAIN LIVE FRONT WITH 2-HOLE SPADE
- 25 TAP CHANGER
- 35 LOW VOLTAGE BUSHING, ANSI SPADES, WITH 6 HOLES AND SPADE SUPPORTS.
- 55 ARRESTER MOUNTING PADS
- 65 PRESSURE VACUUM GAUGE
- 66 OIL LEVEL GAUGE
- 67 THERMOMETER
- 68 DRAIN VALVE WITH SAMPLER
- 69 EXTERNAL DRAIN VALVE PADLOCKABLE BOX
- 76 GROUND BUS- COPPER BAR WITH FOUR .56 DIA HOLES (1/4" X 2" X 12")
- 77 EXTERNAL GAUGE BOX (SST)

- ** COLOR: ANSI 61 GRAY (MUNSELL 8.3G 6.1/0.54)
- ** NITROGEN BLANKET
- ** UL APPROVED
- ** IMPACT INDICATOR
- ** STAINLESS STEEL HARDWARE
- ** 18 KV MCOV 15.30 LIVE FRONT ARRESTER
- ** 5000' ALTITUDE
- ** IRISS CAP-ENV-24 INFRARED WINDOW IN HV DOOR AND CAP-ENV-12 WINDOW IN LV DOOR
- ** TWO PENTAHEAD SOCKETS

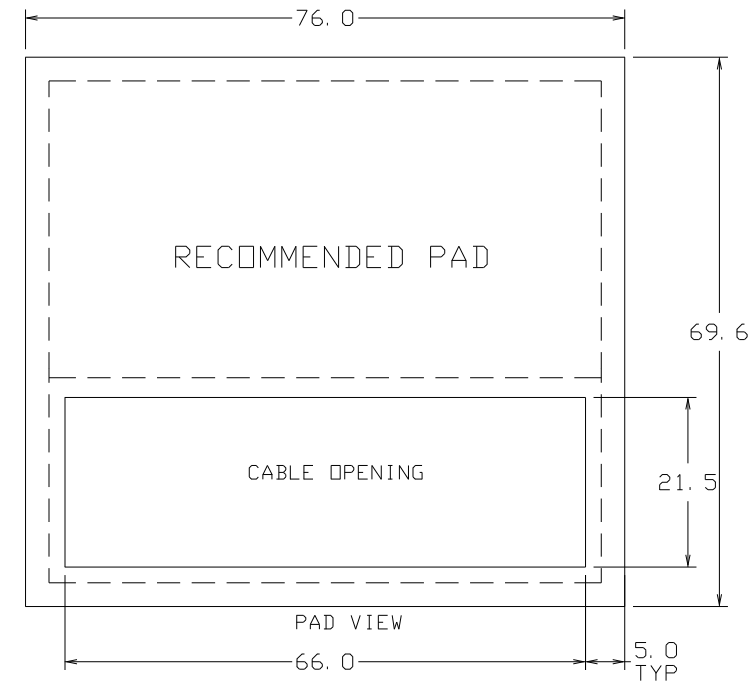


CUSTOMER: PHILLIPS 66		ABB INC.		REV NO 01
GO&ITEM X	H. V. 2400 DELTA	TITLE 0L3PPADMNT DEF XXX FIN XX U/M XX NOTE XX	USER HEMKEI	
KVA 500/560	L. V. 480Y/277	DIMENSIONS IN INCHES-SCALE 1	CADAM 0190209N1NNNNCMRV01,1	
REV DATA		HEMEYER 080619	APPD XXXXX	MDDYY
		D SPEC XXXXXX	APPD	J801CMRV
		ENG. REF XXXXXX	LAYOUT MODEL ID	
		ENGINEERING DEPT.	JEFFERSON CITY, MO.	USA

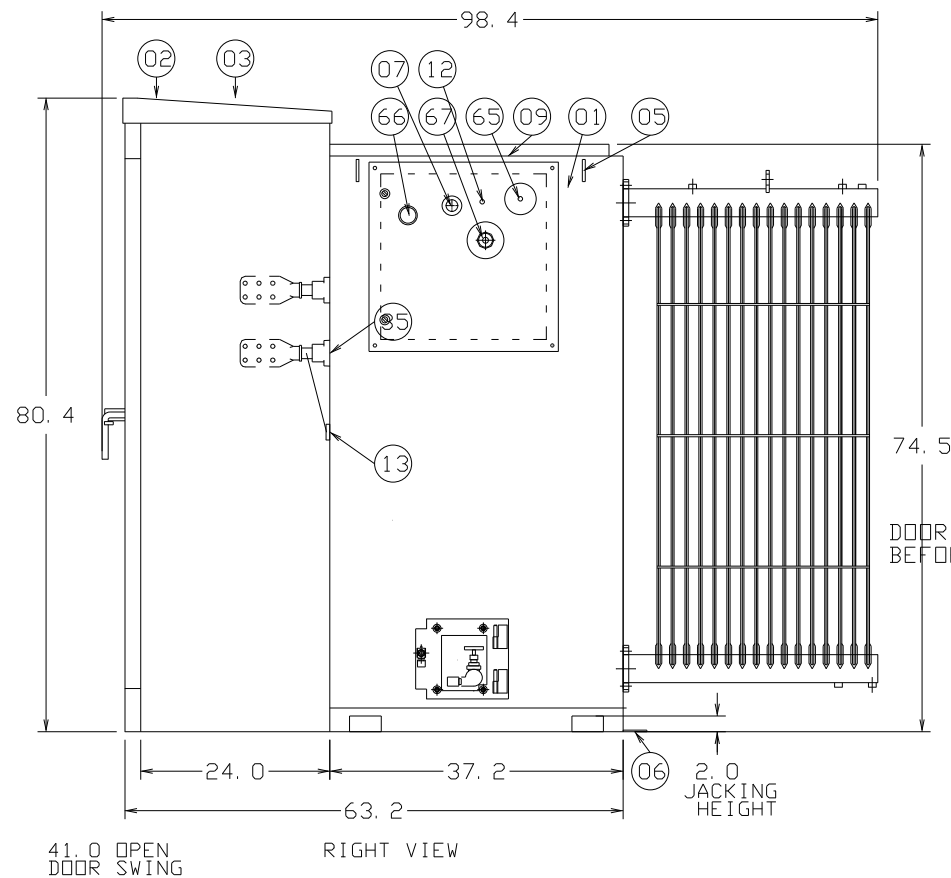
THIS OUTLINE IS FOR ERECTION OR MOUNTING PURPOSES. IT IS NOT TO SCALE AND SHOULD NOT BE REGARDED AS INDICATING THE EXACT DETAILS OF CONSTRUCTION.



FRONT VIEW SHOWN WITHOUT DOORS



PAD VIEW

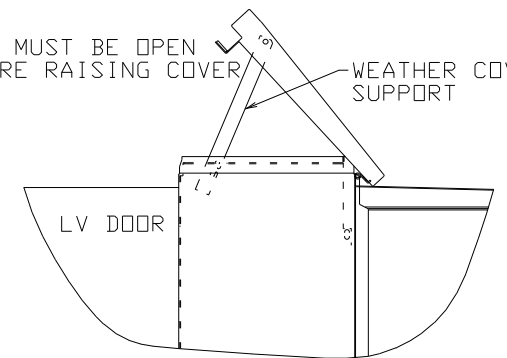


RIGHT VIEW

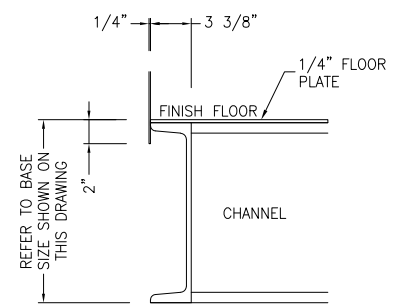
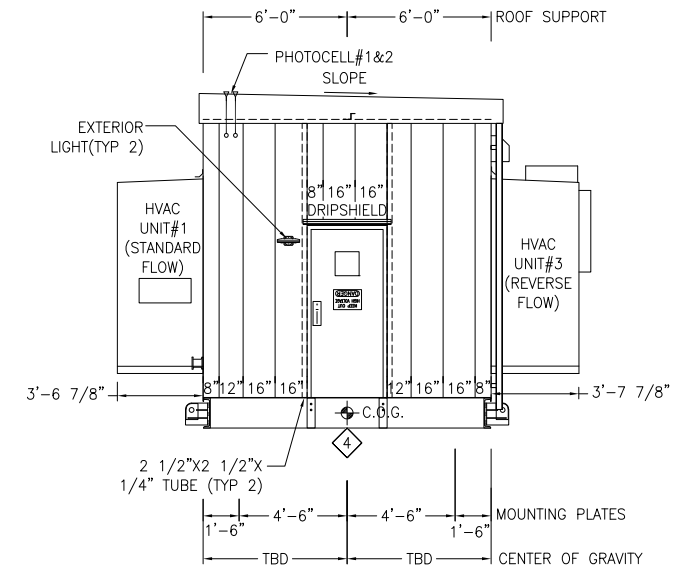
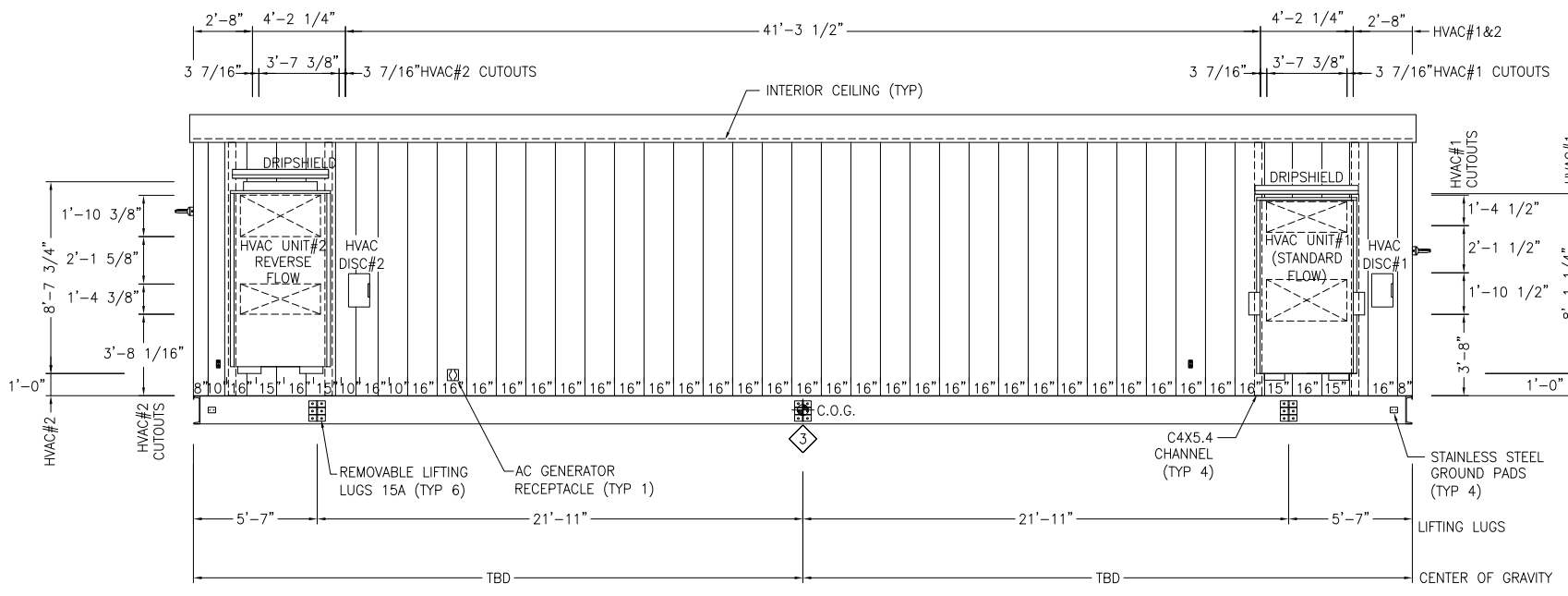
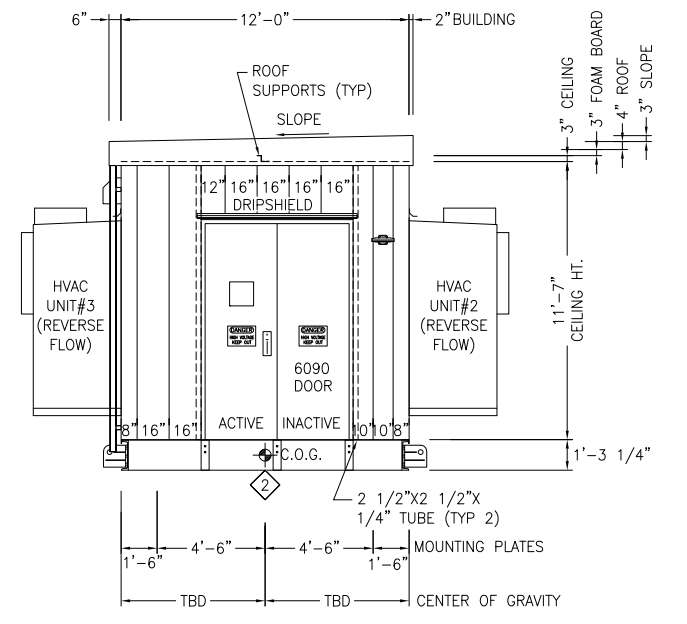
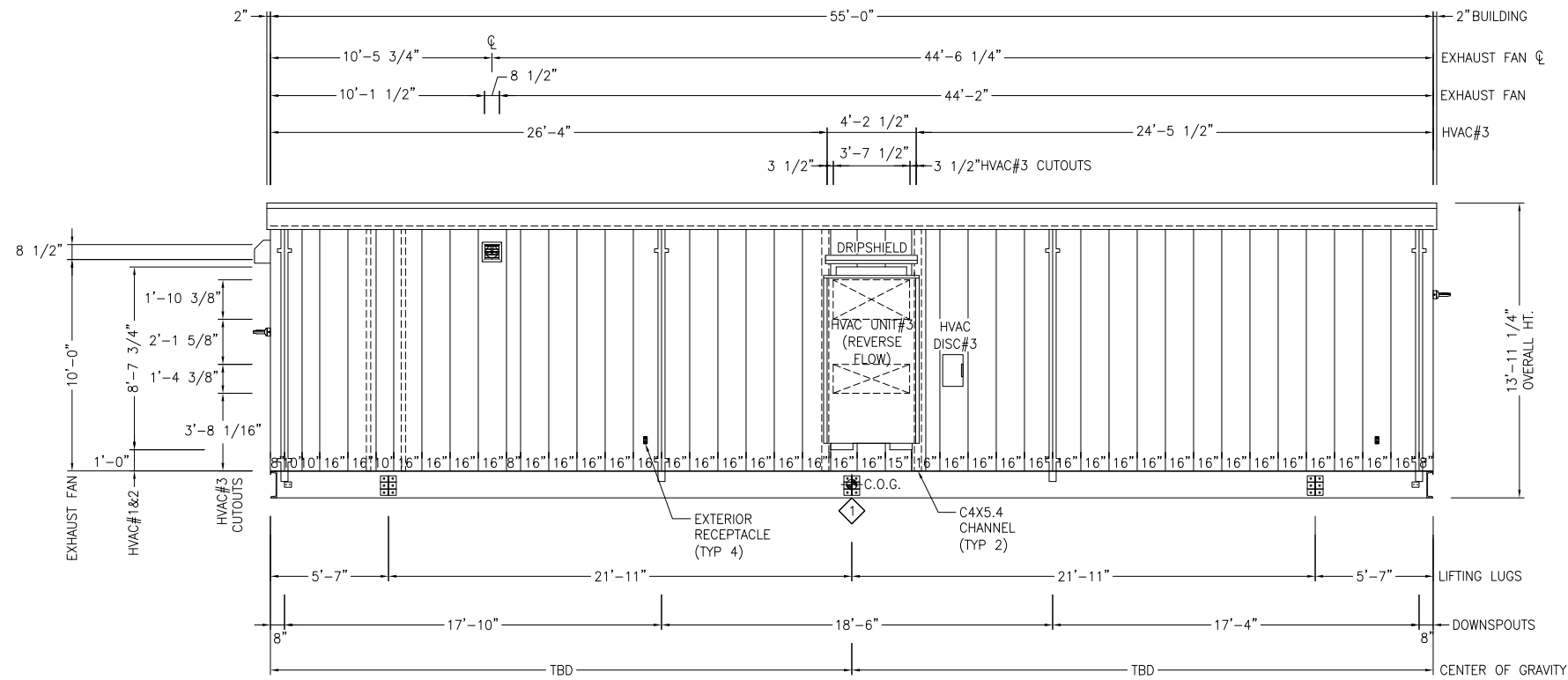
- 01 TANK
- 02 CABINET BOLTED-ON, REMOVABLE SILLS, OPEN BOTTOM 1.25 INCH FLANGE, HINGED LIFT-OFF DOOR, PROVISION FOR PADLOCK, STOP IN OPEN POSITION.
- 03 WEATHER COVER, REMOVABLE OR HINGED
- 04 TANK TO BASE GROUND STRAP AND PROVISIONS FOR TANK TO CABINET GROUND LIFTING HOOKS, 4 TOTAL
- 05 SHIPPING BRACKETS
- 07 1 INCH FILL PLUG
- 08 1 INCH DRAIN PLUG WITH SCHRADER VALVE
- 09 HANDHOLE, 9.5 INCH X 17.5 INCH, BOLTED-ON COVER
- 10 NAMEPLATE MOUNTED ON TANK WALL
- 11 GROUND PAD .50-13-TAP, HV AND LV COMPARTMENT
- 12 PRESSURE RELIEF DEVICE
- 13 LV NEUTRAL GROUND PAD .50-13-TAP WITH GROUND STRAP
- 14 HV/LV BARRIER (STEEL)
- 16 LEFT SIDE COOLER
- 17 REAR COOLER
- 21 LIVE FRONT HIGH VOLTAGE BUSHING, 2 HOLE ANSI SPADES
- 25 TAP CHANGER
- 35 LOW VOLTAGE BUSHING, ANSI SPADES, WITH 6 HOLES.
- 55 ARRESTER GROUND PADS
- 65 PRESSURE VACUUM GAUGE
- 66 OIL LEVEL GAUGE
- 67 THERMOMETER
- 68 DRAIN VALVE WITH SAMPLER
- 75 PARKING STAND
- 76 PADLOCKABLE EXTERNAL DRAIN VALVE BOX
- 77 PADLOCKABLE GAUGE BOX
- 78 GROUND BAR

- ** ANSI 61 GRAY PAINT (MUNSELL 8.3G 6.1/0.54)
- ** UL APPROVED
- ** 18KV MCOV 15.30 LIVE FRONT ARRSTER

DOOR MUST BE OPEN BEFORE RAISING COVER
WEATHER COVER SUPPORT



REV DATA		H. V. 24940		ABB INC.		REV NO
KVA 2500		L. V. 2400Y/1385		TITLE OL3PPADMNT DEF XXX FIN XX U/M XX NOTE XX		01
				DES 3PH OUTLINE		USER PLDAKD
				DIMENSIONS IN INCHES-SCALE 1		CADAM 0190402N1NNNNNY201,1
				D, Kobierec 091520		APPD XXXXX MDDYY
				D SPEC XXXXXX		APPD
				ENG. REF XXXXXX		LAYOUT MODEL ID
				ENGINEERING DEPT.		JEFFERSON CITY, MD. USA
						J801CNY2



WALL OVERHANG
3/4" = 1'


ELEVATIONS

- NOTES:
1. CUSTOMER TO VERIFY ALL WALL CUTOUT SIZES & LOCATIONS
2. PROVIDE TEMPORARY SHIPPING COVER PLATES ON ALL WALL OPENINGS IF EQUIPMENT IS REMOVED FOR SHIPMENT.

DIMENSIONAL TOLERANCES
+ 1/4"
- 1/4"

THIS DRAWING AND THE INFORMATION HEREIN CONTAINED ARE THE PROPERTY OF PROTECT CONTROLS, INC. WHICH HAS FURNISHED THEM IN CONFIDENCE UPON THE UNDERSTANDING AND CONDITION THAT ALL PERSONS, FIRMS OR CORPORATIONS RECEIVING SUCH DRAWING AND INFORMATION SHALL BY THE ACT OF RECEIVING THEM BE DEEMED TO HAVE AGREED: TO MAKE NO COPY, DUPLICATION, DISCLOSURE OR USE WHATSOEVER OF ALL OR ANY PART THEREOF EXCEPT AS EXPRESSLY AUTHORIZED IN WRITING BY PROTECT CONTROLS, INC.: NOT TO GIVE, LEND OR OTHERWISE DISPOSE OF THIS DRAWING: AND TO RETURN THIS DRAWING PROMPTLY UPON REQUEST.

REV	DATE	DESCRIPTION	DES'R	CHK'R
0	2/17/2020	ISSUED FOR APPROVAL	JAC	CS
1	8/20/2020	REVISED FOR APPROVAL	JAC	JC

 PROTECT CONTROLS, INC. 3212 Old Highway 105 East Conroe, Texas 77301-6458 www.protectcontrols.com Tel.: 713.691.5183	
CUSTOMER: PHILLIPS 66/ROONEY ENGINEERING S.O. No.: 30850	
TITLE: P66 CALHAN ELECTRICAL EQUIPMENT CENTER RFO RECOVERY PROJECT - RZSS6 LER ELEVATIONS	
DRAWN: JAC APPROVED: CS	DATE: 1/24/20 SCALE: 3/16" = 1'-0" DRAWING NUMBER: 30850-500