

GENERAL PROJECT LOCATION:
THE PUMP STATION IS LOCATED AT 32795 US HIGHWAY 24 EAST OF CALHAN,
IN THE NE ¼ OF SECTION 21, TOWNSHIP 11 SOUTH, RANGE 61 WEST,
EL PASO COUNTY, COLORADO.

GPS COORDINATES OF THE PUMP STATION ARE:
LATITUDE: 39.079639° N
LONGITUDE: 104.223196° W

PARCEL NUMBER: 11000-00-052
PARCEL SIZE: 5 ACRES

PROPERTY ADDRESS: 32795 US-24, CALHAN, CO 80808

SUBMITTALS
INITIAL: 07-23-2021
REVISION 1

TETRA TECH ROONEY
115 INVERNESS DRIVE EAST, SUITE 300
CENTENNIAL, CO 80112
303-792-5911
DAVID.CHEEVER@TETRATECH.COM

PREPARED UNDER THE DIRECT SUPERVISION OF
REESE LUNDGREN, PE
COLORADO REGISTRATION 35730
FOR & ON BEHALF OF TETRA TECH ROONEY
FOR CIVIL DRAWINGS, SHEETS 3-12



PREPARED UNDER THE DIRECT SUPERVISION OF
DAVID CHEEVER, PE
COLORADO REGISTRATION 29237
FOR & ON BEHALF OF TETRA TECH ROONEY



ISSUES & REVISIONS	
NO. 1	DATE 07-29-2021 BY: DPCHEEVER
DESCRIPTION: INCORPORATED EL PASO COUNTY REVIEW COMMENTS	
NO. 2	DATE BY
DESCRIPTION:	
NO. 3	DATE BY
DESCRIPTION:	
NO. 4	DATE BY
DESCRIPTION:	
NO. 5	DATE BY
DESCRIPTION:	
NO. 6	DATE BY
DESCRIPTION:	

DATE: 07-23-2021
SCALE: NTS
PROJECT MANAGER: DPC
PROJECT NO: 204-3417
DRAWN BY: CWG
DRAWING FILE:

PROJECT:
**CALHAN PUMP STATION
UPGRADE**

CLIENT:
PHILLIPS 66 PIPELINE COMPANY, LLC
3960 EAST 56TH AVENUE
COMMERCE CITY, CO 80022
303-376-4376
JARED.D.LARSEN@P66.COM

SHEET TITLE:
COVER SHEET

SHEET NUMBER:
1 OF 26

COUNTY PROJECT NUMBER EA2193

LEGAL DESCRIPTION:
SEE LAND SURVEY PLAT SHEET 26

LAND USE AND ZONING:
ZONE A-35, NON-CONFORMING

PROPERTY TAX SCHEDULE NUMBER:
TAX AREA CODE BBA; PARCEL ID 1100000052

BASIS OF BEARINGS:
SEE LAND SURVEY PLAT SHEET 26

BENCHMARKS:
SEE LAND SURVEY PLAT SHEET 26

CALHAN SITE DEVELOPMENT PLAN INDEX		
SHEET	DRAWING NUMBER	TITLE
1	CALH-SDP-0001	SITE DEVELOPMENT PLAN COVER SHEET
2	CALH-EXB-1000 REV 2	LIMITS OF DISTURBANCE SITE PLAN
3	CALH-NX-0001 REV 1	CIVIL DRAWING INDEX
4	CALH-MC-0001 REV 0	CIVIL LEGEND & GENERAL NOTES
5	CALH-GR-0002 REV 0	EXISTING CONDITIONS SITE PLAN
6	CALH-GR-0003 REV 1	PROPOSED SCOPE OF WORK SITE PLAN
7	CALH-GR-0004 REV 1	CIVIL GRADING PLAN
8	CALH-MC-0003 REV 1	CIVIL FENCE & SURFACING PLAN
9	CALH-MC-0004 REV 0	CIVIL TYPICAL FENCING DETAILS
10	CALH-MC-0005 REV 0	CIVIL FENCING TYPICAL DETAILS
11	CALH-MC-0006 REV 0	CIVIL DETAILS
12	CALH-MC-0007 REV 0	CIVIL EROSION CONTROL DETAILS
13	CALH-EE-0047 REV 0	LIGHTING & LJB DETAILS & BOM
14	CALH-EE-0048 REV 0	LIGHTING PLAN
15	CALH-SDP-0002	EXISTING LIGHTING - SHEET 1
16	CALH-SDP-0003	EXISTING LIGHTING - SHEET 2
17	CALH-SDP-0004	EXISTING LIGHTING - SHEET 3
18	CALH-SDP-0005	EXISTING LIGHTING - SHEET 4
19	CALH-SDP-0006	EXISTING LIGHTING - SHEET 5
20	CALH-SDP-0007	ELEVATION - PUMP SKID GENERAL ARRANGEMENT SHEET 1
21	CALH-SDP-0008	ELEVATION - PUMP SKID GENERAL ARRANGEMENT SHEET 2
22	CALH-SDP-0009	ELEVATION - ELECTRICAL EQUIPMENT CENTER
23	CALH-SDP-0010	ELEVATION - SWITCHGEAR
24	CALH-SDP-0011	ELEVATION - MV TRANSFORMER
25	CALH-SDP-0012	ELEVATION - LV TRANSFORMER
26	CALH-SDP-0013	LAND SURVEY PLAT

EL PASO COUNTY APPROVAL



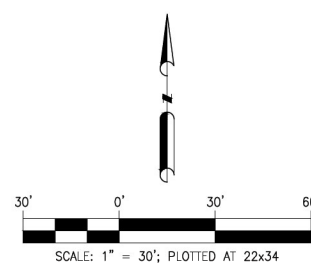
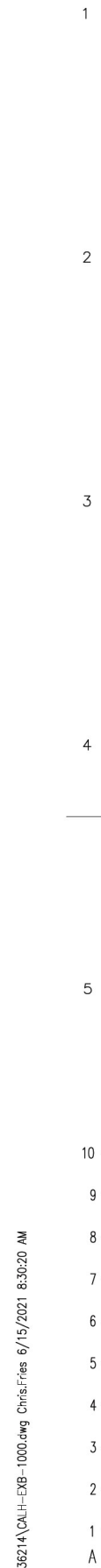
**PHILLIPS 66
PIPELINE LLC**

FOR BIDS	
FOR APPR	
FOR CONST	
DRAWN	CWG 07/23/21
CHECKED	DPC 07/23/21
APPD	JLT 07/23/21

**CALHAN
SITE DEVELOPMENT PLAN
COVER SHEET
1 OF 26
EL PASO COUNTY, COLORADO**

SCALE	N.T.S.
PROJECT NO	204-3417
FILE NAME (aka) DOCUMENT NUMBER	CALH-SDP-0001

NO.	REVISION	BY	DATE
0	ISSUED FOR PERMITTING	CWG	07/23/2021
1	REVISED PER COMMENTS	CWG	07/29/2021



Tetra Tech Rooney
(303) 792-5911

LIMITS OF DISTURBANCE
SITE PLAN
2 OF 26
EL PASO COUNTY, COLORADO

SCALE AS NOTED	
PROJECT NO 03417	
FILE NAME (aka) DOCUMENT NUMBER CALH-EXB-1000	



Phillips 66
Pipeline LLC

FOR BIDS		
FOR APPR		
FOR CONST		
DRAWN	SKC	12/05/1
CHECKED	SKC	11/16/2
APP'D	RML	11/16/2

DRAWING LIST

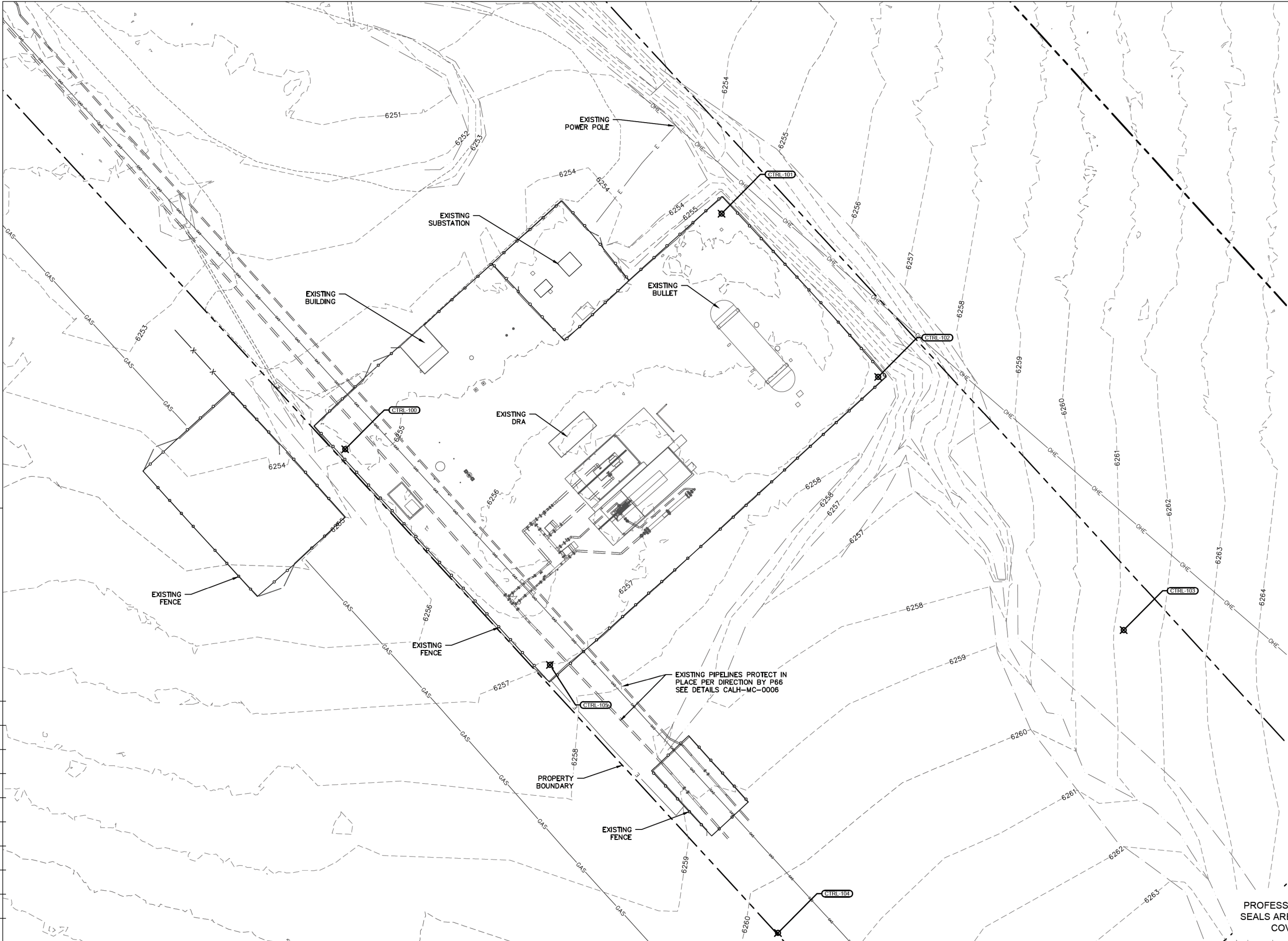
PROJECT DRAWING NUMBER	DRAWING TITLE	REV	DATE
DRAWING INDEX			
CALH-NX-0001	CIVIL DRAWING INDEX	1	7/15/2021
CIVIL			
CALH-MC-0001	CIVIL LEGEND AND GENERAL NOTES	0	11/6/2020
CALH-GR-0002	EXISTING CONDITIONS SITE PLAN	0	11/6/2020
CALH-GR-0003	PROPOSED SCOPE OF WORK SITE PLAN	1	7/15/2021
CALH-GR-0004	CIVIL GRADING PLAN	1	7/15/2021
CALH-MC-0003	CIVIL FENCE & SURFACING PLAN	1	7/15/2021
CALH-MC-0004	CIVIL TYPICAL FENCING DETAILS	0	11/6/2020
CALH-MC-0005	CIVIL TYPICAL FENCING DETAILS	0	11/6/2020
CALH-MC-0006	CIVIL DETAILS	0	11/6/2020
CALH-MC-0007	EROSION CONTROL DETAILS	0	11/6/2020

PROFESSIONAL ENGINEER
SEALS ARE APPLIED TO THE
COVER SHEET.

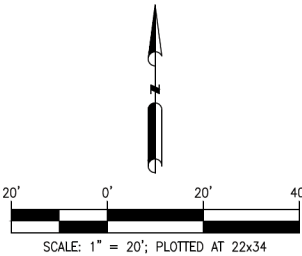
[illegible]

FOR REFERENCE ONLY - OFFICIAL DOCUMENT STORED ELECTRONICALLY PLOT DATE = \$DATE\$ PLOTTED BY : \$PLOTUSER\$ FILE NAME : \$FILE\$

C:\pwworking\va\jms36214\CALH-GR-0002.dwg Chris.fries 11/6/2020 12:40:36 PM



CONTROL POINT LOCATIONS				
Point #	Northing	Easting	Description	EX. ELEVATION
CTRL-100	1456335.98	3362376.18	CTRL-100	6254.78
CTRL-101	1456433.61	3362532.06	CTRL-101	6254.49
CTRL-102	1456365.97	3362597.01	CTRL-102	6257.24
CTRL-103	1456261.00	3362698.69	CTRL-103	6261.25
CTRL-104	1456135.52	3362555.49	CTRL-104	6260.48
CTRL-105	1456246.58	3362460.97	CTRL-105	6256.95



PROFESSIONAL ENGINEER
SEALS ARE APPLIED TO THE
COVER SHEET.



FOR BIDS		
FOR APPR		
FOR CONST		
DRAWN	CEF	12/05/19
CHECKED	RML	11/06/20
APP'D	RML	11/06/20

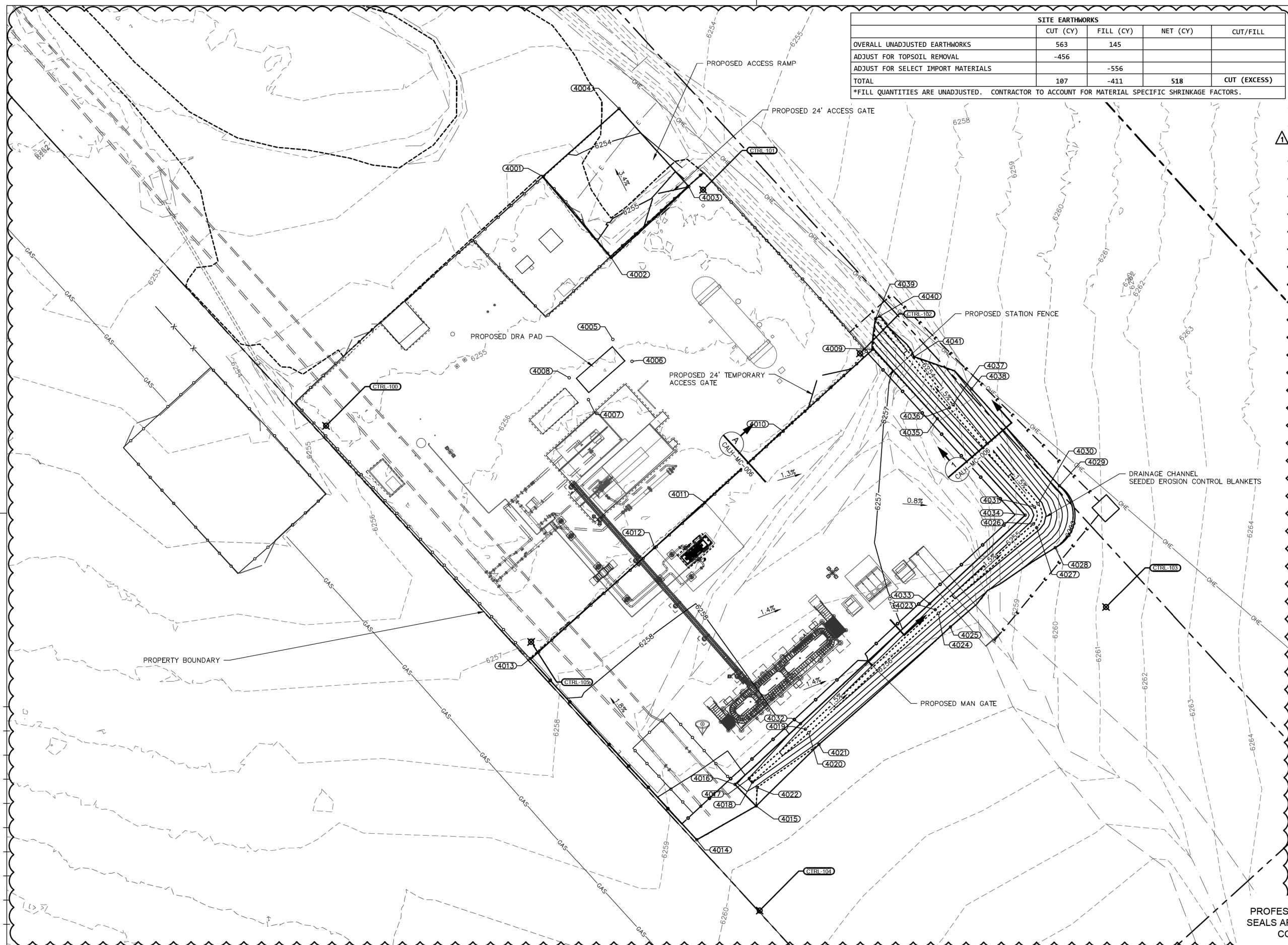
CALHAN
EXISTING CONDITIONS
SITE PLAN
5 OF 26
EL PASO COUNTY, COLORADO

SCALE	AS NOTED
PROJECT NO	03417
FILE NAME (aka)	DOCUMENT NUMBER
CALH-GR-0002	

NO.	REVISION	BY	DATE
0	ISSUED FOR CONSTRUCTION	CEF	11/06/20
		RML	RML

CHKD	APP'D
CEF	11/06/20
RML	RML

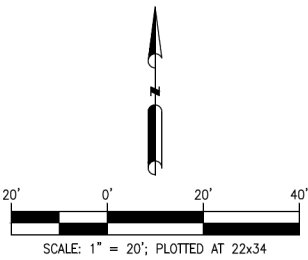
FOR REFERENCE ONLY - OFFICIAL DOCUMENT STORED ELECTRONICALLY
PLOT DATE = \$DATE\$
PLOTTED BY : \$PLOTUSER\$
FILE NAME : \$FILES\$



SITE EARTHWORKS				
	CUT (CY)	FILL (CY)	NET (CY)	CUT/FILL
OVERALL UNADJUSTED EARTHWORKS	563	145		
ADJUST FOR TOPSOIL REMOVAL	-456			
ADJUST FOR SELECT IMPORT MATERIALS		-556		
TOTAL	107	-411	518	CUT (EXCESS)
*FILL QUANTITIES ARE UNADJUSTED. CONTRACTOR TO ACCOUNT FOR MATERIAL SPECIFIC SHRINKAGE FACTORS.				

1. PROTECT ALL EXISTING PIPELINES. CONSTRUCT AIR BRIDGE OR WOODEN MATTING.
2. CONTRACTOR SHALL LOCATE ALL EXISTING UTILITIES AND EXISTING LINES PRIOR TO CONSTRUCTION.

FINAL GRADE POINTS			
POINT #	ELEVATION	NORTHING	EASTING
4001	6254.30	1456439.00	3362465.99
4002	6255.18	1456405.56	3362494.10
4003	6255.10	1456434.98	3362526.16
4004	6253.38	1456467.18	3362497.31
4005	6257.00	1456371.69	3362494.75
4006	6257.00	1456362.67	3362502.66
4007	6257.00	1456346.84	3362484.62
4008	6257.00	1456355.86	3362476.71
4009	6257.09	1456367.64	3362602.36
4010	6257.33	1456333.69	3362565.24
4011	6257.69	1456304.32	3362532.76
4012	6257.92	1456285.58	3362512.02
4013	6257.60	1456239.69	3362460.55
4014	6259.43	1456164.82	3362529.45
4015	6259.55	1456178.78	3362553.98
4016	6259.23	1456187.63	3362545.22
4017	6257.90	1456190.14	3362551.12
4018	6257.90	1456188.63	3362552.44
4019	6256.23	1456210.58	3362574.45
4020	6256.23	1456209.09	3362575.79
4021	6259.45	1456204.25	3362580.03
4022	6259.40	1456186.38	3362554.41
4023	6255.14	1456259.91	3362628.06
4024	6255.14	1456258.42	3362629.40
4025	6258.91	1456252.73	3362634.36
4026	6254.33	1456295.35	3362668.67
4027	6254.33	1456293.86	3362670.01
4028	6259.97	1456285.59	3362677.67
4029	6260.03	1456311.19	3362679.43
4030	6254.25	1456303.72	3362670.61
4031	6254.25	1456302.43	3362669.09
4032	6257.75	1456212.81	3362572.39
4033	6256.80	1456262.35	3362625.80
4034	6256.81	1456298.98	3362665.30
4035	6256.82	1456338.94	3362628.94
4036	6253.44	1456343.48	3362633.94
4037	6253.44	1456344.78	3362635.46
4038	6258.45	1456351.26	3362643.10
4039	6252.72	1456380.30	3362603.43
4040	6252.72	1456381.33	3362605.14
4041	6253.22	1456364.41	3362619.24



PROFESSIONAL ENGINEER
SEALS ARE APPLIED TO THE
COVER SHEET.



NO.	REVISION	BY	DATE
		CHKD	APP'D
0	ISSUED FOR CONSTRUCTION	CEF	11/06/20
		RML	RML
1	ISSUED FOR CONSTRUCTION	CEF	07/15/21
		RML	RML



FOR BIDS		
FOR APPR		
FOR CONST		
DRAWN	CEF	12/05/19
CHECKED	RML	11/06/20
APP'D	RML	11/06/20

CALHAN
CIVIL
GRADING PLAN
7 OF 26
EL PASO COUNTY, COLORADO

SCALE	AS NOTED	
PROJECT NO	03417	
FILE NAME (aka) DOCUMENT NUMBER		
CALH-GR-0004		



FILE NAME (aka) DOCUMENT NUMBER
CALH-MC-0004

FOR BIDS		
FOR APPR		
FOR CONST		
DRAWN	CEF	01/30/20
CHECKED	RML	11/06/20
APP'D	RML	11/06/20

C:\pwworking\vel\mms36214\CALH-MC-0005.dwg Chris.fries 11/3/2020 2:19:05 PM

EMERGENCY EVACUATION GATE

NTS

24' DOUBLE SWING GATE - ELEVATION VIEW

NTS

Table 1: Materials of Construction		
Component	For Galvanized Steel Fabric	For Aluminum Coated Steel Fabric
Fabric		
Material	ASTM A392 Class 2	ASTM A491
Min Tensile Strength	85,000 psi	80,000 psi
Weave	2 inches mesh, barbed top and bottom	2 inches mesh, barbed top and bottom
Wire Diameter	0.148 in. (9 gage)	0.148 in. (9 gage)
Width	7ft. (1)	7ft.(1)
Barbed Wire		
Material	ASTM A121 Coating Type Z, Coating Class 3	ASTM A121 Coating Type A
Barb Spacing	No Greater Than 4 inches	No Greater Than 4 inches
Wire Diameter	0.105 inches	0.105 inches
Barb Diameter	0.080 inches	0.098 inches
Connectors		
Tie Wire Material	9-gage, Class 1 galvanized steel wire per ASTM A641	9-gage aluminum-coated steel wire per ASTM A809
Other Connection Material	Galvanized Steel	Galvanized Steel
Tension Wire		
Material	Galvanized Steel wire per ASTM A641 coating class 5	Aluminum-coated steel wire per ASTM A809
Wire Diameter	0.177 inches (7 gage)	0.177 inches (7 gage)

Table 1: Materials of Construction (Continued)		
Component	Materials for Steel and Aluminum Fabric Types	
Posts and Frames		
Material	ASTM A53 Gr. B	
Min. Yield Strength	35,000 psi	
Line Post Size	2 inches SCH 40 pipe or equivalent	
Corner, End and Pull Post Size	2-1/2 inches SCH 40 pipe or equivalent	
Bracing and Top Rail Size	1-1/4 inch SCH 40 pipe or equivalent	

Table 2: Galvanizing		
Component	Specification	
Steel Shapes, Plates, Bars, Strips	ASTM A123	
Steel Pipe	ASTM A123 or F1083	
Fabric (after weaving)	ASTM A392 Class 2	
Fittings and Hardware	ASTM A153	
Barbed Wire	ASTM A121 Class3	
Tension Wire	ASTM A641 Class 5	

Table 3: Minimum Footing Dimension			
Post Description	Post Embedment (inch)	Foundation Diameter (inch)	Foundation Depth (inch)
Line Post	36	10	40
Corner Posts	42	16	46
End Posts	42	16	46
Pull Posts	42	16	46
Gate Posts for Gates up to 12 Feet Wide	42	16	46
Gate Posts for Gates Over 12 Feet to 18 Feet Wide	60	20	66
Gate Posts for Gates Over 18 Feet to 22 Feet Wide	72	26	78

PROFESSIONAL ENGINEER
SEALS ARE APPLIED TO THE
COVER SHEET.



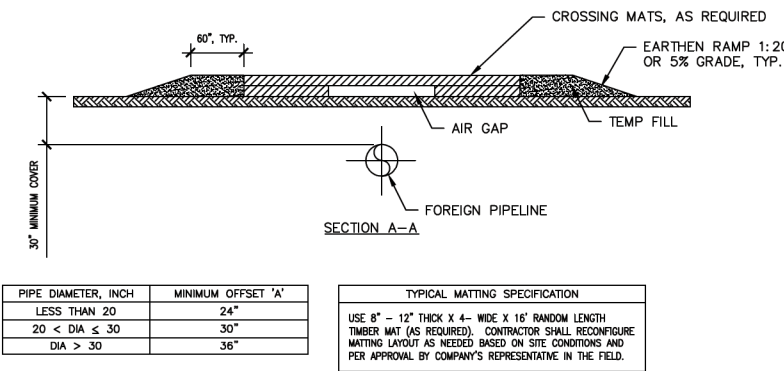
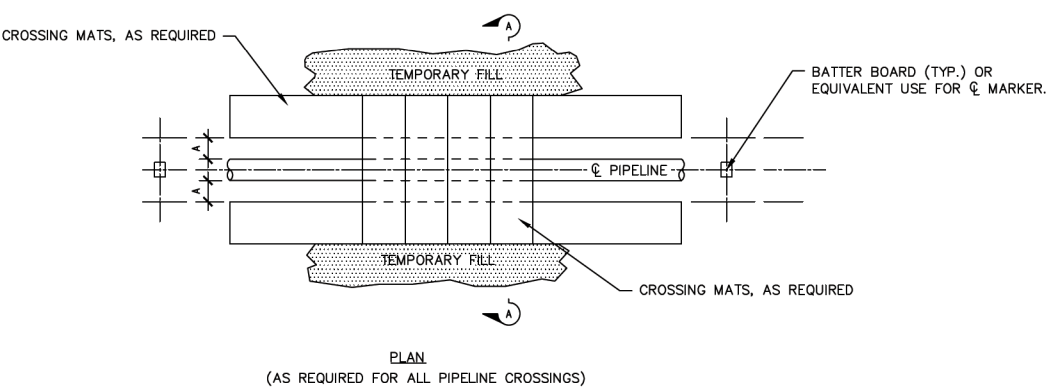
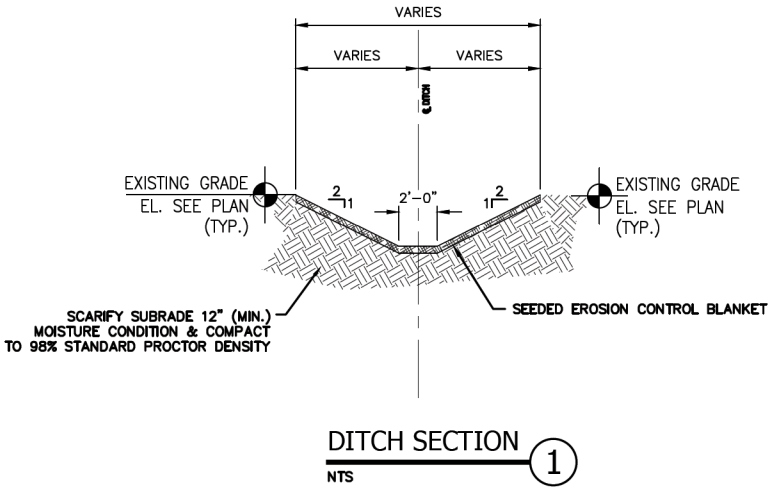
FOR BIDS		
FOR APPR		
FOR CONST		
DRAWN	CEF	01/30/20
CHECKED	RML	11/06/20
APP'D	RML	11/06/20

CALHAN
CIVIL
FENCING TYPICAL DETAILS
10 OF 26
EL PASO COUNTY, COLORADO

SCALE	AS NOTED
PROJECT NO	03417
FILE NAME (aka) DOCUMENT NUMBER	
CALH-MC-0005	

GRADING NOTES:

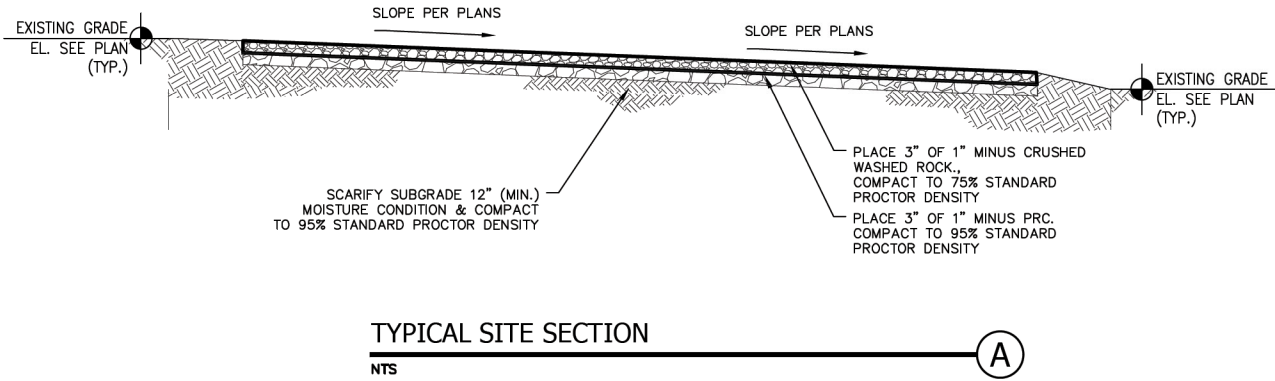
1. CONTRACTOR SHALL PERFORM FINAL GRADING TO RESTORE THE WORK AREA TO THE FINAL CONTOURS SHOWN ON GRADING DRAWINGS.
2. WHERE PERSONNEL ENTER EXCAVATIONS 5 FEET OR MORE IN DEPTH, THE EXCAVATION SHALL BE PROTECTED BY A SUPPORT SYSTEM OF SLOPING SHORING OR BRACING MEETING OSHA STANDARDS. SUCH PROTECTION SHALL ALSO BE PROVIDED IN EXCAVATIONS LESS THAN 5 FEET DEEP WHERE HAZARDOUS EARTH MOVEMENT MAY BE EXPECTED. SHORING OR BRACING SYSTEMS SHALL BE INSPECTED DAILY AND AFTER RAINSTORMS OR OTHER HAZARD-INCREASING OCCURRENCE.
3. NO CONTRACTOR SHALL PERFORM ANY GRADING OR GRUBBING OPERATION SO AS TO CAUSE FALLING ROCKS, SOIL OR DEBRIS IN ANY FORM TO FALL, SLIDE OR FLOW ONTO ADJOINING PROPERTIES, STREETS, OR NATURAL WATERCOURSES.
4. THE LIMITS OF THE AREA TO BE GRUBBED AND GRADED SHALL BE FLAGGED BEFORE COMMENCEMENT OF THE GRUBBING WORK.
5. WHERE APPLICABLE AND FEASIBLE, THE MEASURES TO CONTROL EROSION AND OTHER POLLUTANTS SHALL BE IN PLACE BEFORE ANY GRUBBING WORK IN INITIATED.
6. TEMPORARY EROSION CONTROLS SHALL NOT BE REMOVED BEFORE PERMANENT EROSION CONTROLS ARE IN PLACE AND ESTABLISHED.
7. IF THE GRADING OR GRUBBING WORK INVOLVES CONTAMINATED SOIL, THEN ALL GRUBBING WORK SHALL BE DONE IN CONFORMANCE WITH APPLICABLE STATE AND FEDERAL REQUIREMENTS.
8. ALL STRUCTURAL BACKFILL SHALL BE PLACED UNDER THE DIRECTION OF THE OWNER'S REPRESENTATIVE.
9. ALL BACKFILL MATERIAL SHALL BE THOROUGHLY COMPACTED AND MOISTURE CONDITIONED TO 95% STANDARD PROCTOR DENSITY.
10. THE CONTRACTOR SHALL BE RESPONSIBLE FOR MAINTAINING POSITIVE DRAINAGE THROUGHOUT THE PROJECT.



PIPE DIAMETER, INCH		MINIMUM OFFSET 'A'
LESS THAN 20		24"
20 < DIA ≤ 30		30"
DIA > 30		36"

TYPICAL MATTING SPECIFICATION	
USE 8" - 12" THICK X 4'- WIDE X 16' RANDOM LENGTH TIMBER MAT (AS REQUIRED). CONTRACTOR SHALL RECONFIGURE MATTING LAYOUT AS NEEDED BASED ON SITE CONDITIONS AND PER APPROVAL BY COMPANY'S REPRESENTATIVE IN THE FIELD.	

AIR BRIDGE MATTING DETAIL - TEMPORARY



TYPICAL SITE SECTION

PROFESSIONAL ENGINEER
SEALS ARE APPLIED TO THE
COVER SHEET.

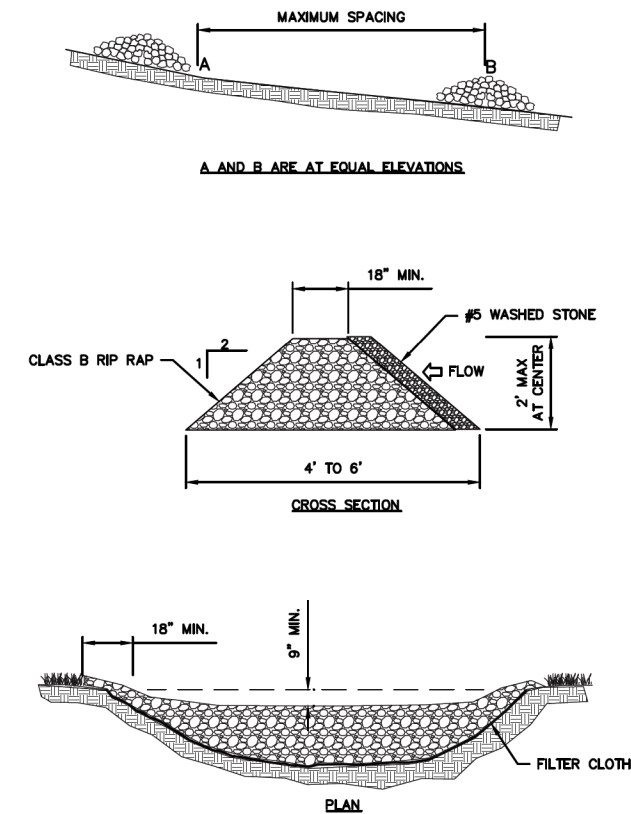
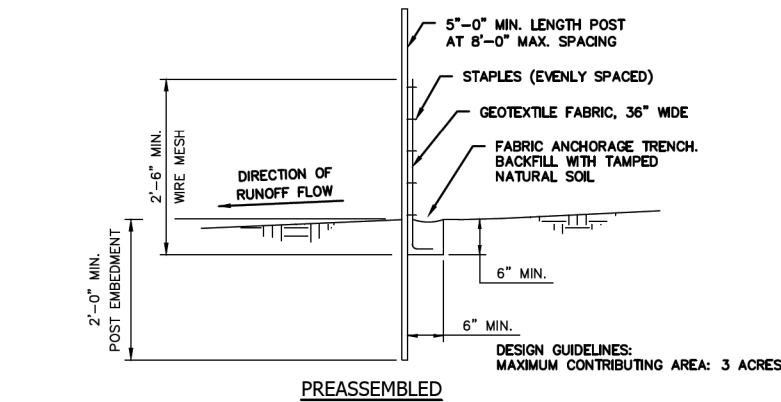
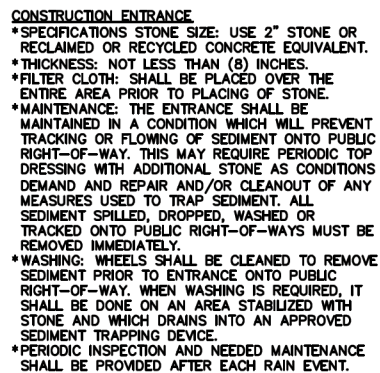
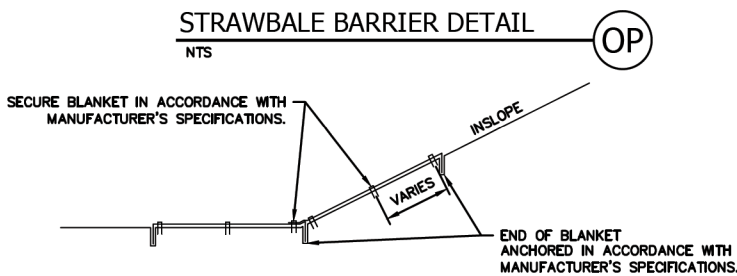
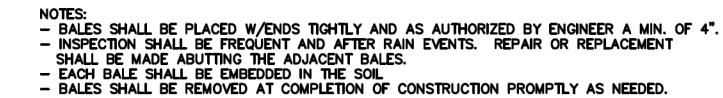
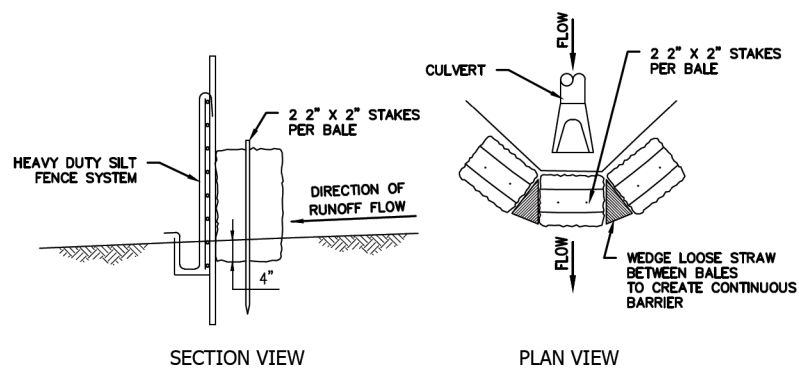


FOR BIDS	
FOR APPR	
FOR CONST	
DRAWN	CEF 01/30/20
CHECKED	RML 11/06/20
APP'D	RML 11/06/20

CALHAN
CIVIL
CIVIL DETAILS
11 OF 26
EL PASO COUNTY, COLORADO

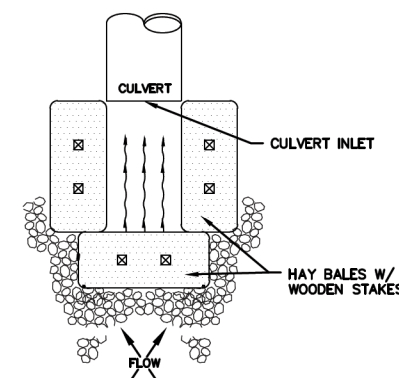
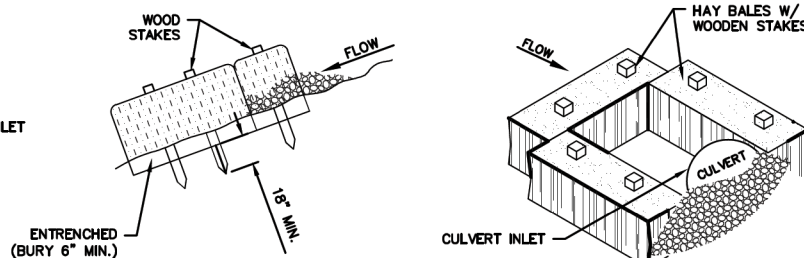
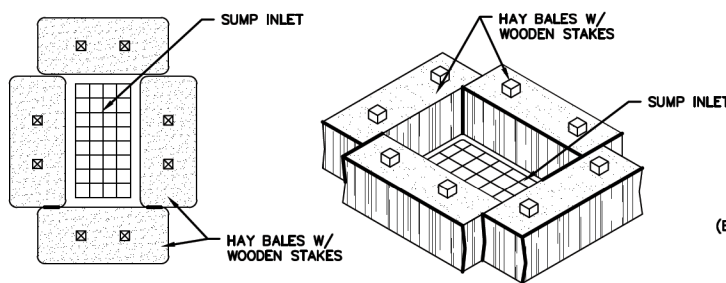
SCALE	AS NOTED
PROJECT NO	03417
FILE NAME (aka) DOCUMENT NUMBER	
CALH-MC-0006	

C:\pwworking\vel\dm536214\CALH-MC-0006.dwg Chris.Fries 11/3/2020 2:19:31 PM



GENERAL NOTES:

1. RIPRAP SIZE TO BE DESIGNED BY ENGINEER.
2. CHECK DAMS MAY BE USED IN SLOPING DITCHES OR CHANNELS TO SLOW VELOCITY OR TO CREATE SEDIMENT TRAPS.
3. ENSURE THAT MAXIMUM SPACING BETWEEN DAMS PLACES THE TOE OF THE UPSTREAM DAM AT THE SAME ELEVATION AS THE DOWNSTREAM DAM (SEE DIAGRAM ABOVE).



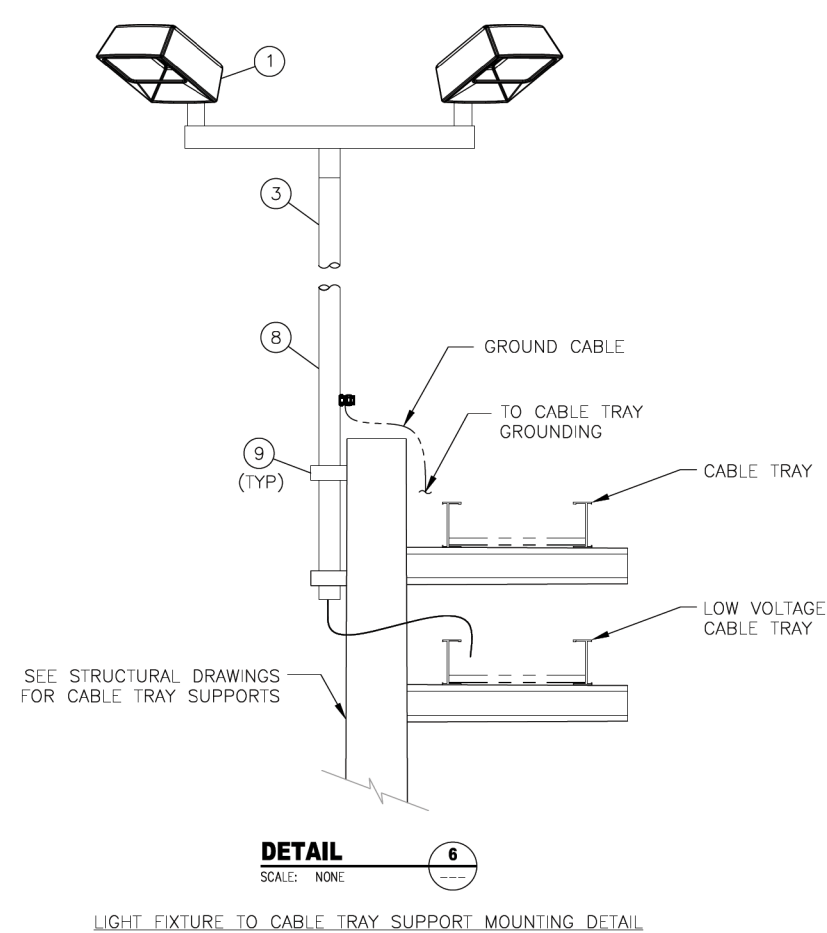
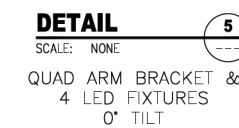
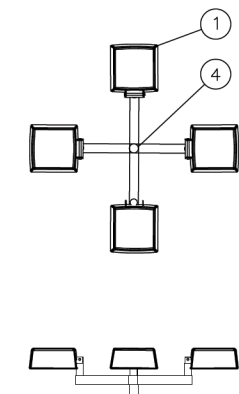
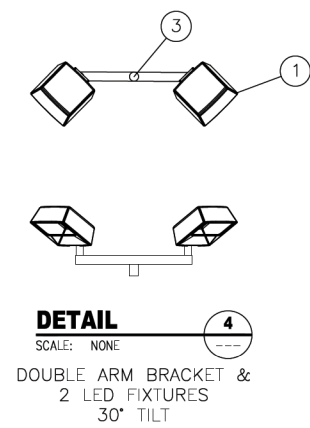
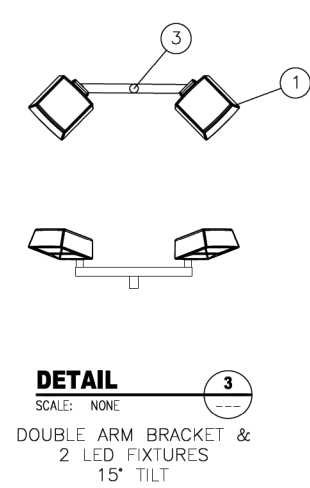
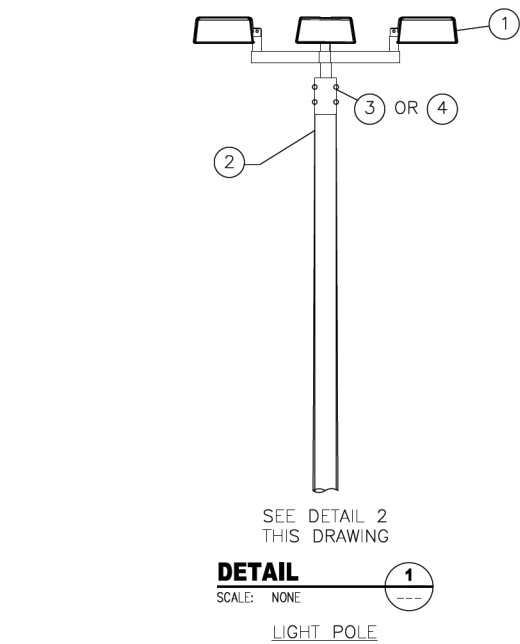
Tetra Tech ROONEY
(303) 792-5911



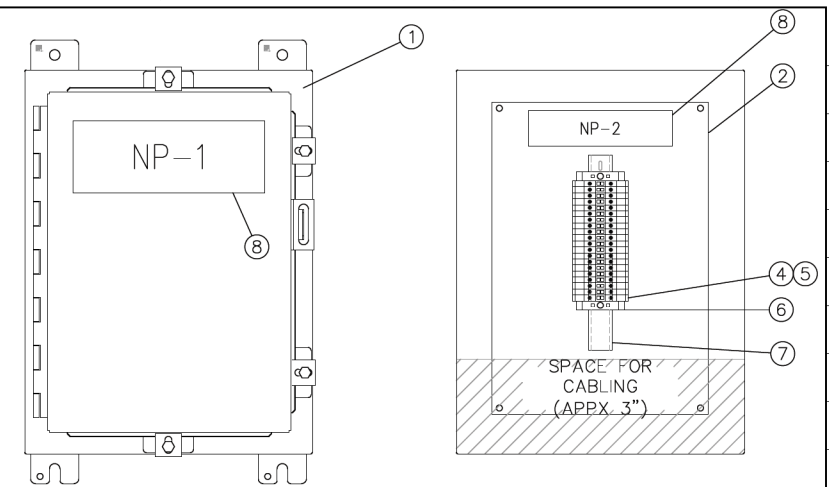
Phillips 66
Pipeline LLC

CALHAN
CIVIL
EROSION CONTROL DETAILS
12 OF 26
EL PASO COUNTY, COLORADO

SCALE	
AS NOTED	
PROJECT NO	03417
FILE NAME (aka)	DOCUMENT NUMBER
CALH-MC-0007	



BILL OF MATERIALS			
ITEM	QTY	DESCRIPTION	SUPPLIER
1	A/R	FLOODLIGHT – LED 480 VOLT, HOLOPHANE: PMLD–4–4K–10A–AH–66–1	CONTRACTOR
2	1	LIGHT POLE, 30’ HIGH, WHITE LIGHT POLE ACCESSORIES, ALL WHITE, HOLOPHANE: SSS–30–6G–T20–DWH	CONTRACTOR
3	3	SQUARE BULLHORN: DOUBLE ARM BRACKET, HOLOPHANE: SBS28–DWH	CONTRACTOR
4	1	SQUARE BULLHORN: QUAD ARM BRACKET, HOLOPHANE: SBS49–DWH	CONTRACTOR
5	A/R	1” CONDUIT – RIGID GALVANIZED, PVC COATED	CONTRACTOR
6	A/R	CONDUIT FITTING LB100 FORM 7 OR EQUIVALENT	CONTRACTOR
7	A/R	CONDUIT SEALING FITTING COOPER INDUSTRIES: EYD OR EQUIVALENT	CONTRACTOR
8	A/R	2” CONDUIT – RIGID GAVANIZED, 10’	CONTRACTOR
9	A/R	UNISTRUT WITH BEAM CLAMPS & 2” CONDUIT CLAMPS OR EQUIVALENT	CONTRACTOR



ENCLOSURE - FRONT VIEW

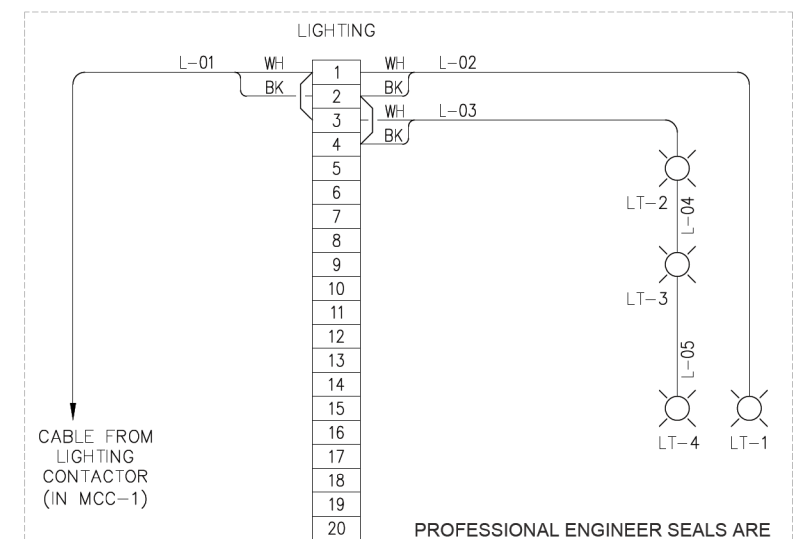
BACK PANEL LAYOUT

NAMEPLATE SCHEDULE				
NP NUMBER	PLATE SIZE	LINE NUMBER	LETTER HEIGHT	DESCRIPTION
NP1	3"x8"x0.0625"	1	1"	LJB
NP2	1.5"x6"x0.0625"	1	1/2"	LIGHTING

BILL OF MATERIAL (PER ASSEMBLY)		
MARK	QTY	DESCRIPTION
1	1	HOFFMAN A16H12BLP, NEMA TYPE 4, 16"x12"x8"
2	1	HOFFMAN A16P12, 13"x9"
3	—	—
4	20	FEED—THROUGH TERMINAL BLOCK, AB, 1492—W4
5	A/R	TERMINAL MARKER, AB, 1492—MS6X12
6	2	END CLAMP, AB, 1492—ERL35
7	A/R	DIN RAIL PERFORATED, AB, 199—DR1
8	2	NAMEPLATE (SEE NAMEPLATE SCHEDULE) WHITE LAMINATED WITH BLACK CORE ENGRAVED PER NAMEPLATE SCHEDULE.

LJB PANEL LAYOUT

LIGHTING JUNCTION BOX (LJB)



LJB PANEL WIRING



LIGHTING & LJB DETAILS & BOM
13 OF 26
EL PASO COUNTY, COLORADO

FILE NAME (aka) DOCUMENT NUMBER
CALH-EE-0047

NO.	REVISION
0	ISSUED FOR CONSTRUCTION

BY	DATE
CHKD	APP'D
CWG	11/06/20
DPC	JJT

[illegible]

FOR BIDS		
FOR APPR		
FOR CONST		
DRAWN	CWG	03/08/19
CHECKED		
APP'D		

CALHAN

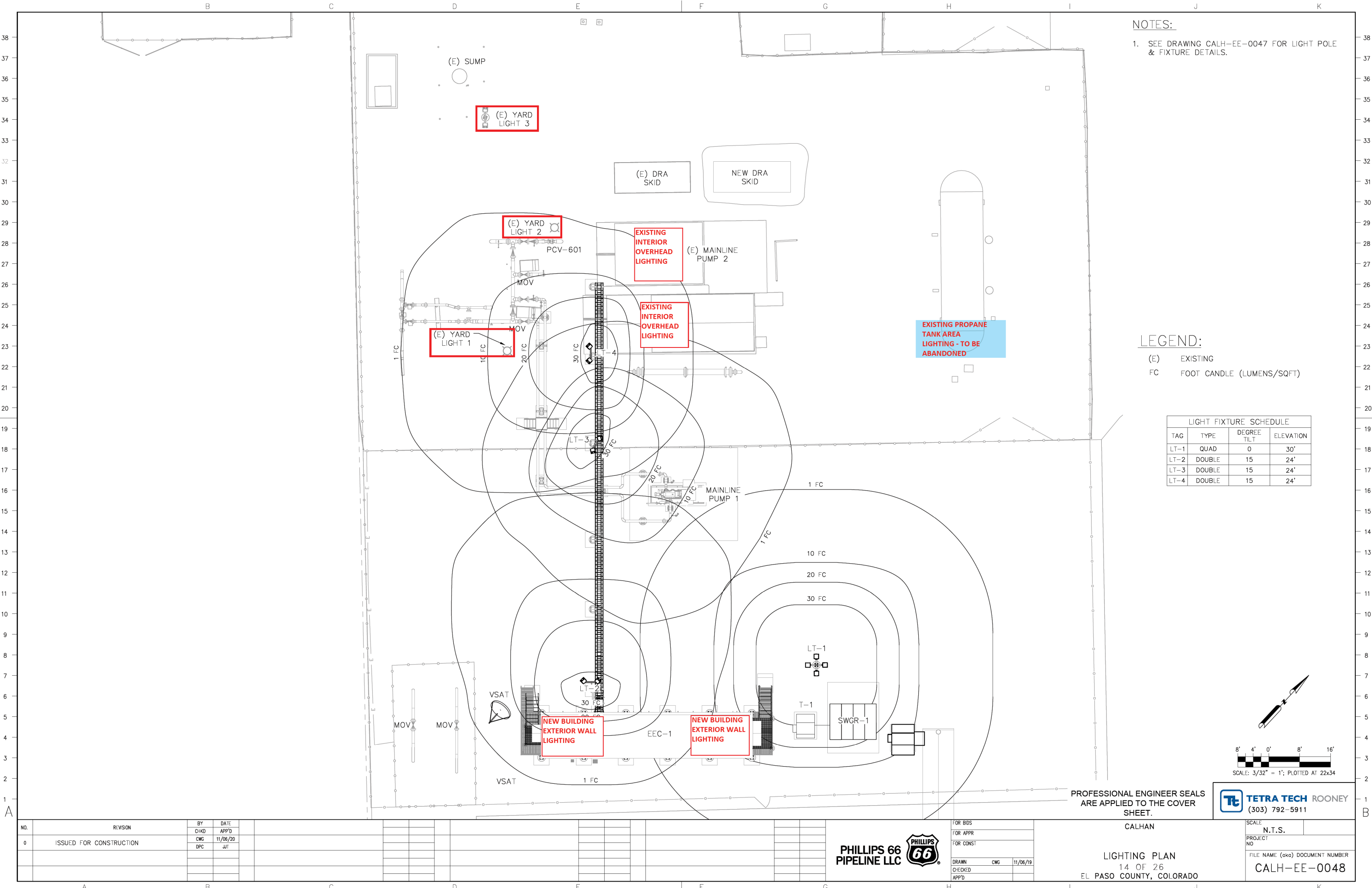
LIGHTING & LJB DETAILS & BOM

13 OF 26

FI PASO COUNTY, COLORADO

SCALE	
PROJECT NO	
FILE NAME (aka) DOCUMENT NUMBER	
CALH-EE-0047	

FOR REFERENCE ONLY - OFFICIAL DOCUMENT STORED ELECTRONICALLY
PLOT DATE = 11/14/20
PLOTTED BY : CHASE GIFFORD
FILE NAME : C:\WORKING\REVIEWS\36215\CALH-EE-0048.DWG



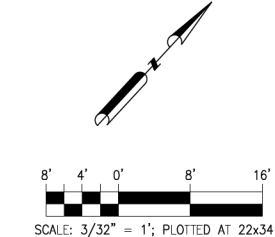
NOTES:

1. SEE DRAWING CALH-EE-0047 FOR LIGHT POLE & FIXTURE DETAILS.

LEGEND:

- (E) EXISTING
FC FOOT CANDLE (LUMENS/SQFT)

LIGHT FIXTURE SCHEDULE			
TAG	TYPE	DEGREE TILT	ELEVATION
LT-1	QUAD	0	30'
LT-2	DOUBLE	15	24'
LT-3	DOUBLE	15	24'
LT-4	DOUBLE	15	24'



PROFESSIONAL ENGINEER SEALS
ARE APPLIED TO THE COVER
SHEET.



TETRA TECH ROONEY
(303) 792-5911

CALHAN

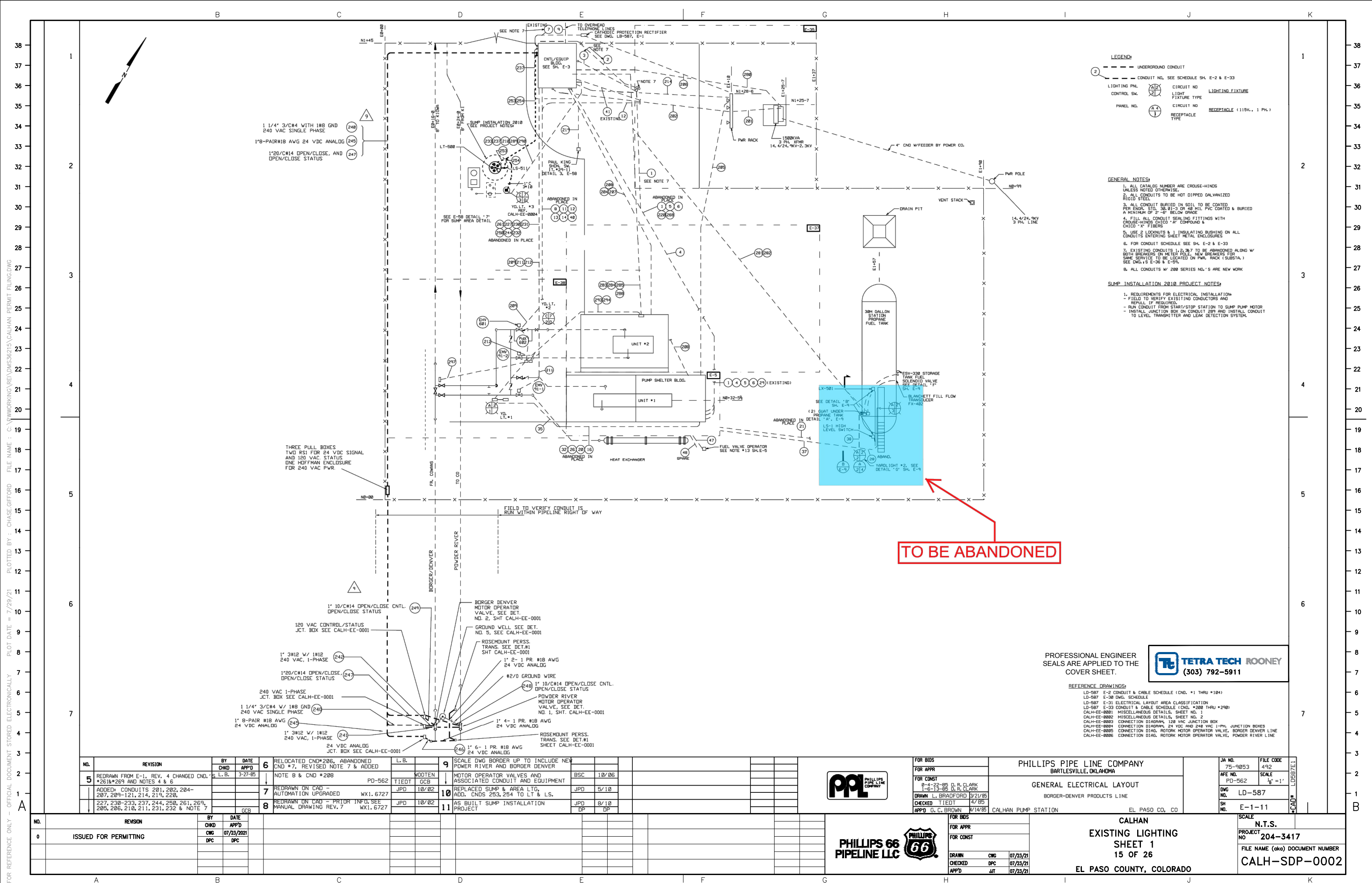


FOR BIDS	
FOR APPR	
FOR CONST	
DRAWN	CWG
CHECKED	
APP'D	

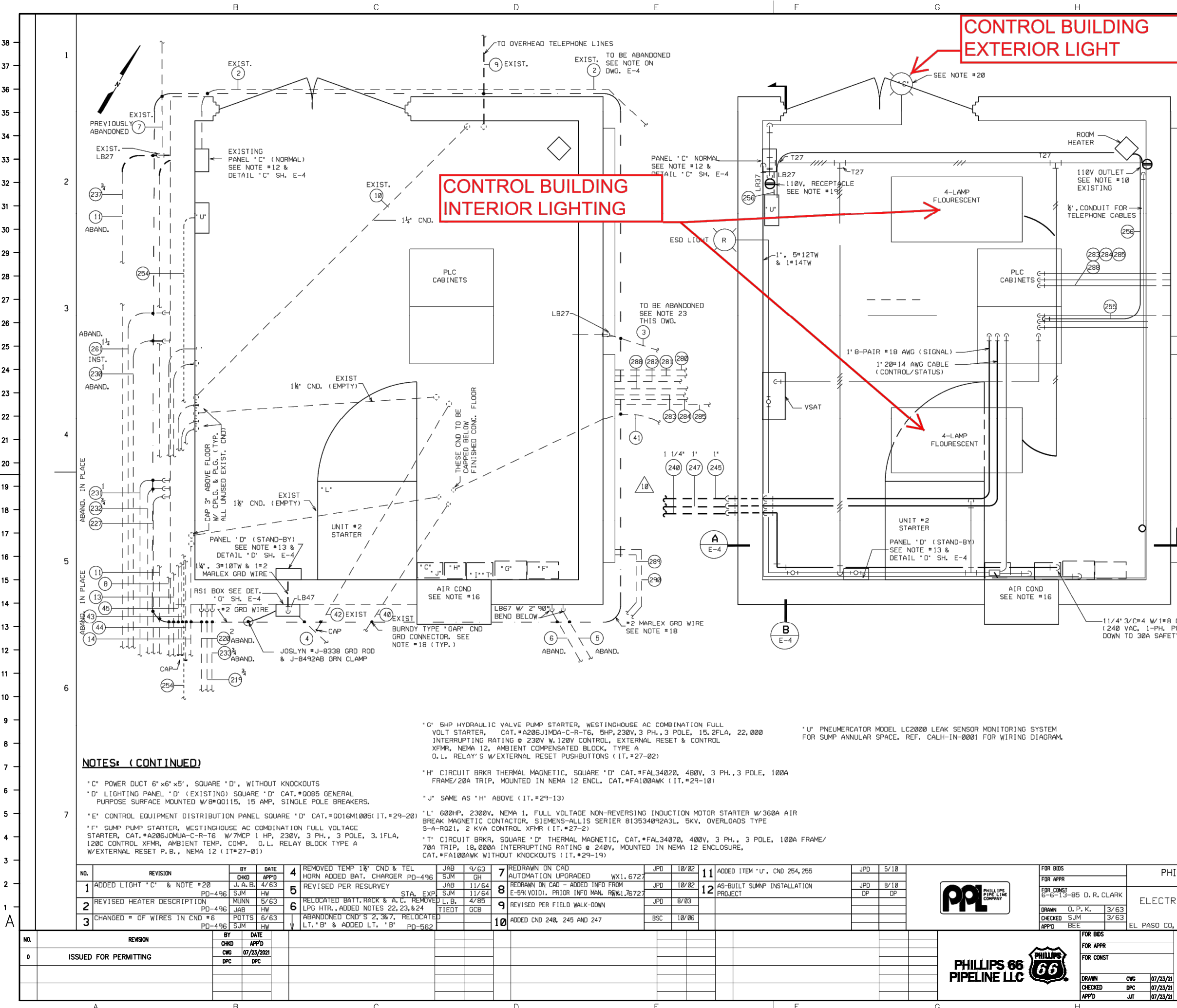
LIGHTING PLAN
14 OF 26
EL PASO COUNTY, COLORADO

SCALE	N.T.S.
PROJECT NO	
FILE NAME (aka) DOCUMENT NUMBER	CALH-EE-0048

NO.	REVISION	BY	DATE
0	ISSUED FOR CONSTRUCTION	CHKD CWG DPC	APP'D 11/06/20 JIT



FOR REFERENCE ONLY - OFFICIAL DOCUMENT STORED ELECTRONICALLY PLOT DATE = 7/29/21 PLOTTED BY : CHASE GIFFORD FILE NAME : C:\WORKING\REVIEWS\36215\CALHAN PERMIT FILINGS.DWG



NOTES:

- ALL CONDUITS TO BE HOT DIPPED GALVANIZED RIGID STEEL.
- ALL FITTINGS TO BE CROUSE-HINDS UNLESS OTHERWISE SPECIFIED.
- ALL EXPOSED CONDUIT RUNS TO BE FASTENED TO BLDG. WITH 1-HOLE MALLEABLE CLAMPS
- PLUG ALL UNUSED CONDUIT OPENINGS
- USE 2-LOCKNUTS & 1 INSULATED BUSHING ON ALL CONDUIT ENTERING SHEET METAL ENCLOSURES
- ALL CONDUIT BURIED IN SOIL TO BE COATED PER ENGR. STD. 30,01-3 & BURIED A MINIMUM OF 2'-6" BELOW GRADE.
- LIGHT SWITCHES ARE BRYANT CAT.#4621 TUMBLER SWITCH, SINGLE POLE, 15AMP, 115 VOLT, 1 PH. INSTALLED IN APPLETON HANDY CONDUIT BOXES CAT.#4SSL-3/4 W/2594 COVER, MOUNT 4'-6" ABOVE FLOOR.
- CONVENIENCE OUTLETS ARE GENERAL ELECTRIC CAT.#GE2679 INSTALLED IN SP5800 BOX W/SP58R7 COVER, FIXTURE TYPE #1
- LIGHTING PANEL 'C' IF FEDERAL CAT.#108 W/ 1-20 AMP, DOUBLE POLE BREAKER AND 4-20 AMP, BREAKERS. (FOR WIRING DIAG. SEE SH. E-18)
- LIGHTING PANEL 'D' IS SQUARE 'D', CAT.#008S GENERAL PURPOSE SURFACE MOUNTED WITH 8*00115, 15 AMP, SINGLE POLE BREAKERS, IT.#PD-496-0-290-10 (FOR WIRING DIAG. SEE SH. E-18)
- AIR CONDITIONER IS AMANA MODEL #212-3U, 12,500 BTU, 9.5 AMP @ 230 VOLTS, 1 PH. ITEM #PD-496-0-600-1
- BOND ALL CONDUITS LEAVING CONTROL BUILDING W/ #2 MARLEX TR-201 GREEN INSULATION STRANDED COPPER WIRE AND BURNDY TYPE 'GAR' CND GRD CONNECTORS
- NEW 110V. RECEPTACLES ARE BRYANT CAT.#5262 DUPLEX, 20 AMP, 125 VOLT, 1 PH., 3 WIRE W/ GRD CONTACT INSTALL IN APPLETON #4SSL-3/4 HANDY BOX APPLETON #2510 COVER, MOUNT 2'-6" ABOVE FLOOR, FIXTURE #3
- LIGHT 'C' APPLETON SEPERABLE SERIES CAT.#G-82518 FLAT CONE REFLECTOR UNIT COMPLETE W/REFLECTOR, OUTLET BOX HOOD & SOCKET, & 200 W LAMP, MOUNT TO APPLETON #4CDD-3/4 4" OCT. BOX
- CONDUIT #3 TO BE DISCONNECTED & CAPPED NEAR GRADE OUTSIDE EAST WALL OF CNTL/EQUIP. BLDG. OPENING IN EAST WALL TO BE SEALED W/ MORTAR OR OTHER ACCEPTABLE COMPOUND.

PROFESSIONAL ENGINEER
SEALS ARE APPLIED TO THE
COVER SHEET.

TETRA TECH ROONEY
(303) 792-5911

LEGEND:

- #2 MARLEX TR-201 GREEN INSULATION STRANDED COPPER GROUND WIRE
- EXPOSED CND, 1/2" UNLESS OTHERWISE NOTED.
- CONDUIT UNDER SLAB OR GROUND CONDUIT NO.
- HASH MARKS INDICATES NO. OF #12 TW ENCLOSED

REF. DWG.'S

- E-4 ELECTRICAL DETAILS #1
- E-59 ELECT. LAYOUT - CNTL/EQUIP BLDG.
- E-60 ELECT. DETAILS #2 CNTL/EQUIP. BLDG.

FOR CONTINUATION SEE LOWER LEFT

FOR CONDUIT SCHEDULE & REFERENCE DRAWINGS SEE SH. E-2, E-33

NO.	REVISION	BY	CHKD	DATE	APPR
1	ADDED LIGHT 'C' & NOTE #20	J.A.B.	SJM	4/63	PD-496
2	REVISED HEATER DESCRIPTION	MUNN	JAB	5/63	PD-496
3	CHANGED # OF WIRES IN CND #6	POTTS	SJM	6/63	PD-496

NO.	REVISION	BY	CHKD	DATE	APPR
4	REMOVED TEMP 1 1/2" CND & TEL HORN ADDED BAT. CHARGER PD-496	JAB	SJM	9/63	PD-496
5	REVISED PER RESURVEY	JAB	SJM	11/64	PD-496
6	RELOCATED BATT. RACK & A.C. REMOVED LPG HTR., ADDED NOTES 22, 23, & 24	JAB	SJM	4/85	PD-496
7	ABANDONED CND'S 2, 3, & 7, RELOCATED LT. 'B' & ADDED LT. 'B'	JAB	SJM	PD-562	PD-562

NO.	REVISION	BY	CHKD	DATE	APPR
7	REDRAWN ON CAD AUTOMATION UPGRADED	JPD	SJM	10/02	PD-496
8	REDRAWN ON CAD - ADDED INFO FROM E-59 (VOID), PRIOR INFO MAN. R/W 1.7622	JPD	SJM	10/02	PD-496
9	REVISED PER FIELD WALK-DOWN	JPD	SJM	8/03	PD-496
10	ADDED CND 240, 245 AND 247	BSC	SJM	10/06	PD-496

NO.	REVISION	BY	CHKD	DATE	APPR
11	ADDED ITEM 'U', CND 254, 255	JPD	SJM	5/10	PD-496
12	AS-BUILT SUMP INSTALLATION PROJECT	JPD	SJM	8/10	PD-496

PHILLIPS 66 PIPELINE LLC

PHILLIPS 66 PIPELINE COMPANY

FOR BIDS	FOR APPR	FOR CONST
DRAWN O.P.K.	CWG	07/23/21
CHECKED SJM	DPC	07/23/21
APPRD BEE	JAT	07/23/21

FOR BIDS	FOR APPR	FOR CONST
DRAWN O.P.K.	CWG	07/23/21
CHECKED SJM	DPC	07/23/21
APPRD BEE	JAT	07/23/21

PHILLIPS PIPE LINE COMPANY
BARTLESVILLE, OKLAHOMA

PROPOSED
ELECTRICAL LAYOUT CNTL/EQUIP BLDG.
CALHAN PUMP STATION
BORGER-DENVER PIPELINE
EL PASO CO, COLORADO

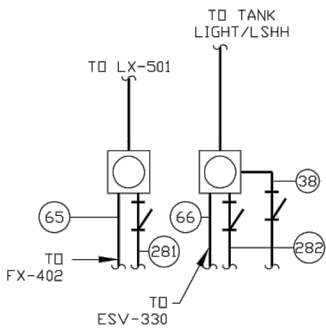
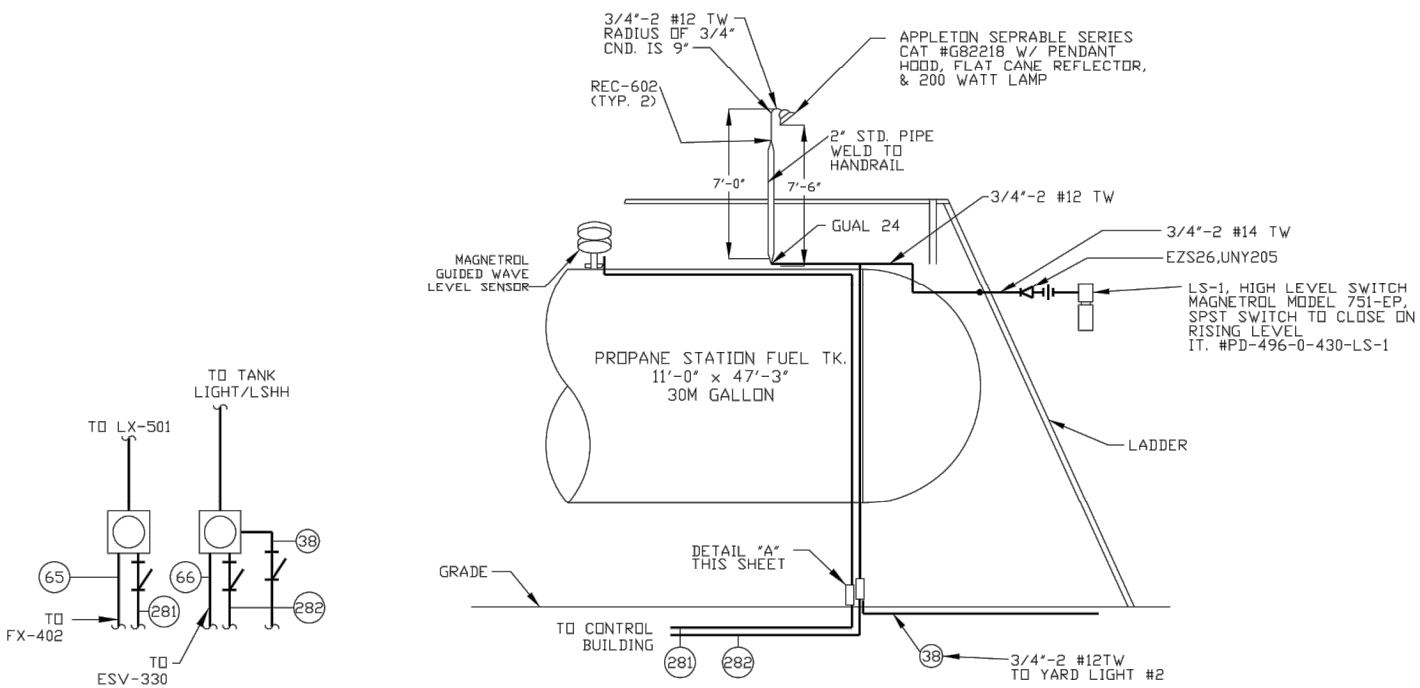
JA NO.	PD-496	FILE CODE
LD-587	SCALE 1/4" = 1'	LD587E3

SH NO.	E-3-12	SCALE
N.T.S.	204-3417	FILE NAME (aka) DOCUMENT NUMBER

CALHAN EXISTING LIGHTING SHEET 2
16 OF 26
EL PASO COUNTY, COLORADO

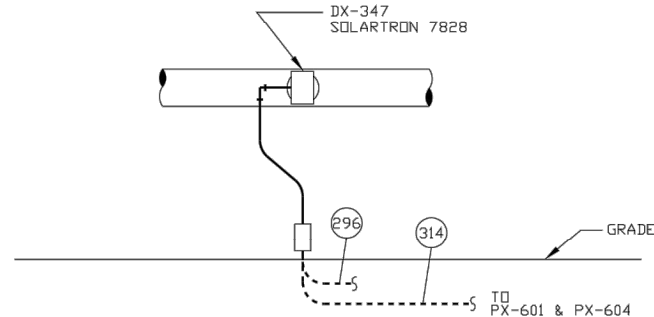
CALH-SDP-0003

FOR REFERENCE ONLY - OFFICIAL DOCUMENT STORED ELECTRONICALLY
PLOT DATE = 7/29/21
PLOT BY : CHASE GIFFORD
FILE NAME : C:\WORKING\REVIEWS\36215\CALHAN PERMIT PLUMB.DWG

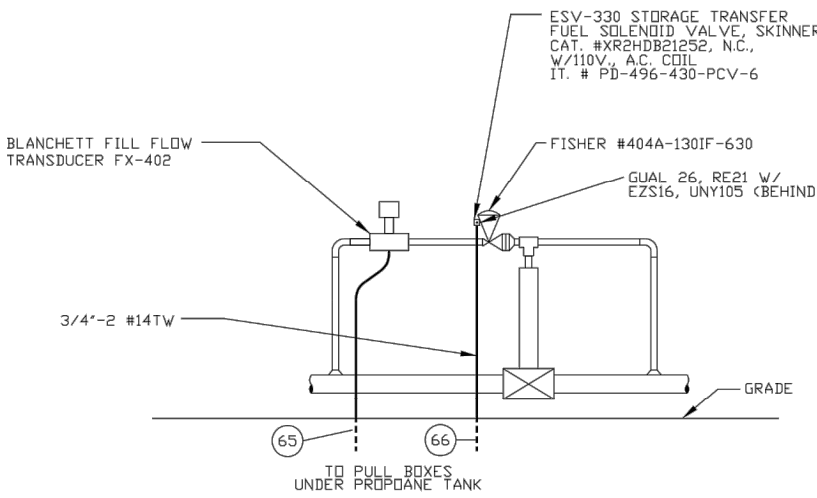


DETAIL "A"
NORTH ELEVATION
PULL-BOXES UNDER PROPANE TANK

DETAIL "B"
STATION PROPANE FUEL TANK
SEE SHEET E-1
NO SCALE

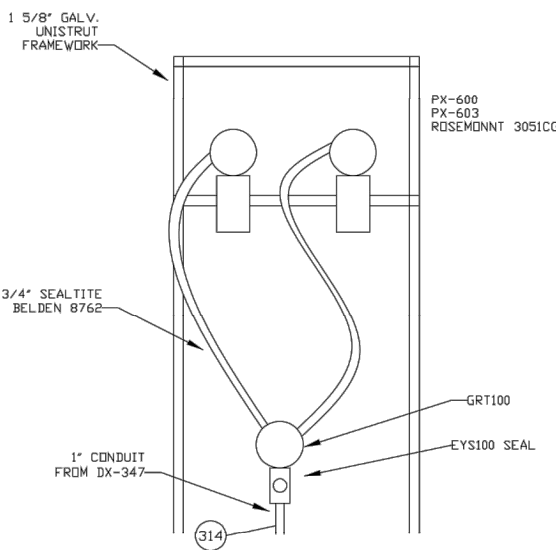


DETAIL "E"
SOLARTRON DENSITY TRANSMITTER
SEE SHEET E-38
NO SCALE

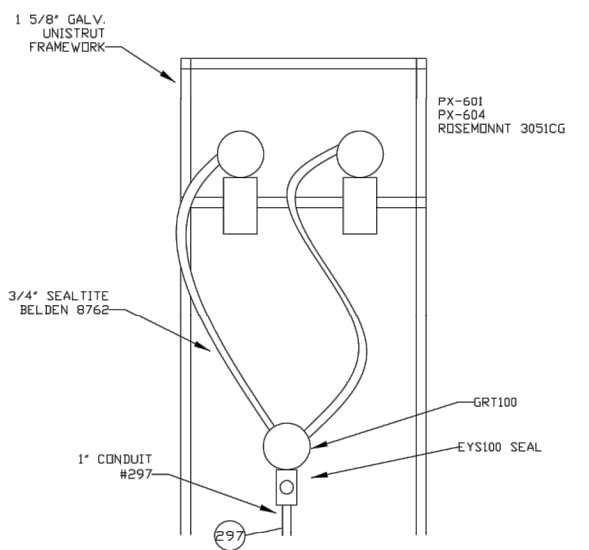


DETAIL "F"
E.M.V.-1 STORAGE TRANSFER FUEL SOLENOID VALVE
SEE SHEET E-1
NO SCALE

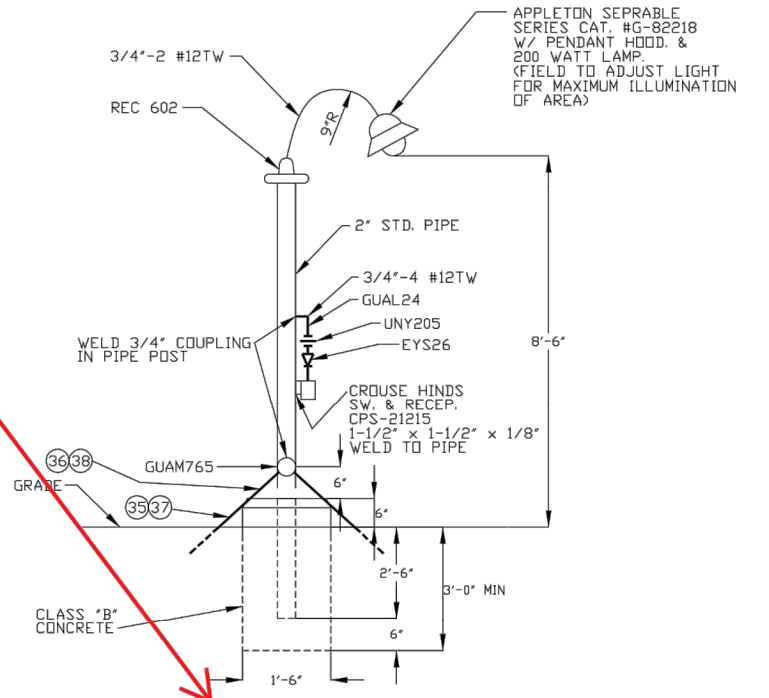
LIGHTING AT PROPANE TANK TO BE ABANDONED



DETAIL "C"
SUCTION LINE PRESSURE TRANSMITTER
SEE SHEET E-38
NO SCALE



DETAIL "D"
HIGH DISCHARGE PRESSURE TRANSMITTER
SEE SHEET E-38
NO SCALE



DETAIL "G"
YARDLIGHT MOUNTING
SEE SHEET E-1
NO SCALE
(TYPICAL FOR TWO)



PROFESSIONAL ENGINEER
SEALS ARE APPLIED TO THE
COVER SHEET.

FOR CONDUIT SCHEDULE & REF DWGS SEE E-2, E-33



NO.	REVISION	BY	DATE
1	Redrawn	MD	10/20/01

FOR BIDS	
FOR APPR	
FOR CONST	
DRAWN OP KENT	1/85
CHECKED TIEDT	4/85
APP'D D. GC. BROWN	4/85

PHILLIPS PIPE LINE COMPANY	FILE CODE
BARTLESVILLE, OKLAHOMA	75-9053 492
ELECTRICAL DETAILS	SCALE
PUMP AREA	PD-562 NONE
BORGER - DENVER PRODUCT LINE	DWG NO. LD-587
CALHAN PUMP STATION EL PASO CO., CO.	SH NO. E-9-4

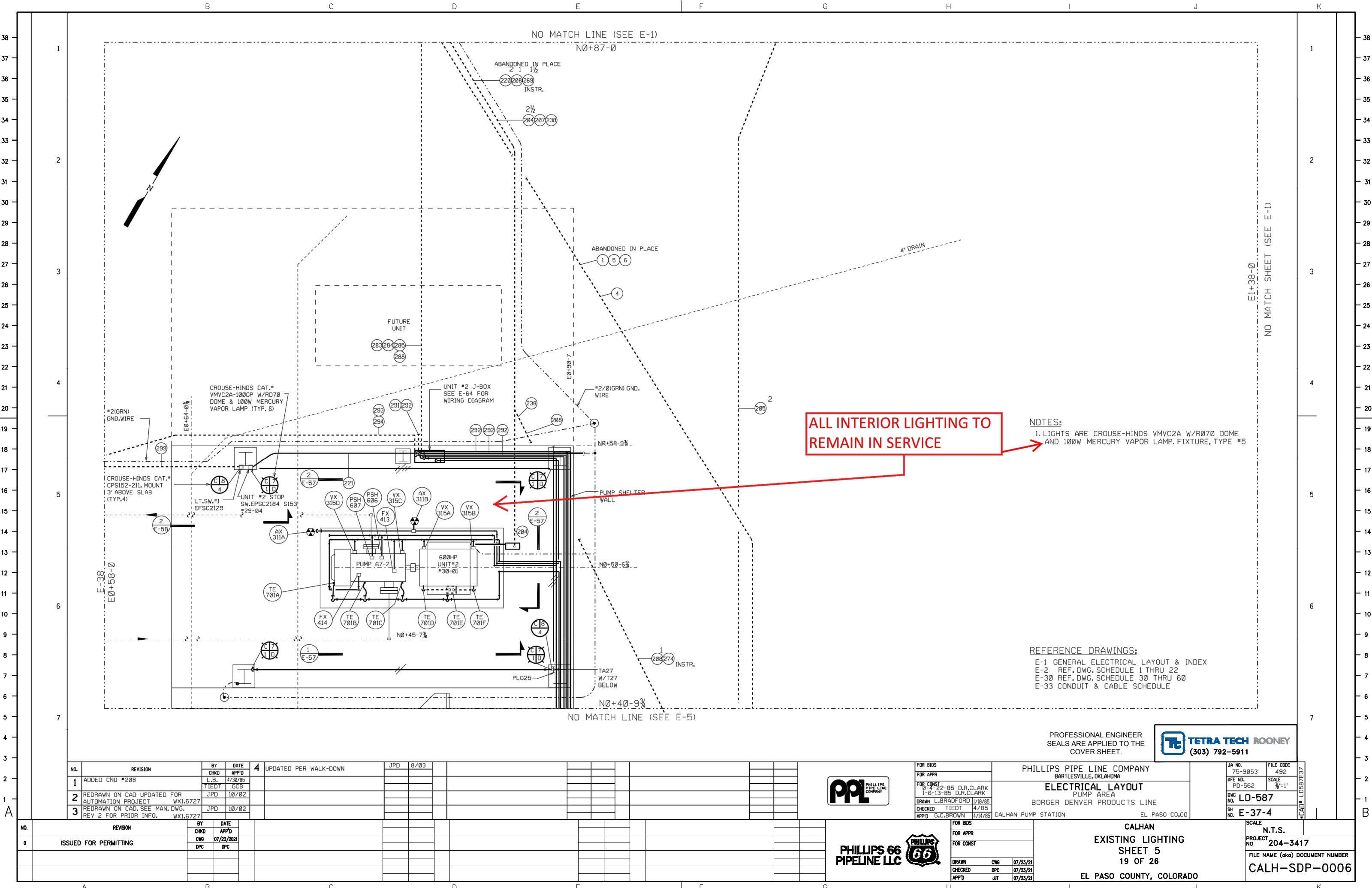
NO.	REVISION	BY	DATE
0	ISSUED FOR PERMITTING	DPC	07/23/2021



FOR BIDS	
FOR APPR	
FOR CONST	
DRAWN CWC	07/23/21
CHECKED DPC	07/23/21
APP'D JLT	07/23/21

CALHAN	SCALE
EXISTING LIGHTING	N.T.S.
SHEET 4	PROJECT NO. 204-3417
18 OF 26	FILE NAME (aka) DOCUMENT NUMBER
EL PASO COUNTY, COLORADO	CALH-SDP-0005

FOR REFERENCE ONLY - OFFICIAL DOCUMENT STORED ELECTRONICALLY PLOT DATE = 7/29/21 PLOTTED BY : CHASE GIFFORD FILE NAME : C:\WORKING\REV\MS36215\CALHAN PERMIT PLUMB.DWG



ALL INTERIOR LIGHTING TO REMAIN IN SERVICE

NOTES:
1. LIGHTS ARE CROUSE-HINDS VMVC2A W/RØ7Ø DOME AND 1ØØW MERCURY VAPOR LAMP. FIXTURE, TYPE #5

REFERENCE DRAWINGS:
E-1 GENERAL ELECTRICAL LAYOUT & INDEX
E-2 REF. DWG. SCHEDULE 1 THRU 22
E-3Ø REF. DWG. SCHEDULE 3Ø THRU 6Ø
E-33 CONDUIT & CABLE SCHEDULE

NO.	REVISION	BY	CHKD	DATE	APP'D
1	ADDED CND #2Ø8	L.B.	TIEDT	4/30/85	GCB
2	REDRAWN ON CAD UPDATED FOR AUTOMATION PROJECT	JPD		10/Ø2	
3	REDRAWN ON CAD, SEE MAN. DWG. REV 2 FOR PRIOR INFO.	JPD		10/Ø2	

NO.	REVISION	BY	CHKD	DATE	APP'D
Ø	ISSUED FOR PERMITTING	DPC		07/23/2021	DPC



FOR BIDS	
FOR APPR	
FOR CONST	
DRAWN	L.BRADFORD 1/18/85
CHECKED	TIEDT 4/85
APP'D	G.C.BROWN 4/14/85

PHILLIPS PIPE LINE COMPANY
BARTLESVILLE, OKLAHOMA
ELECTRICAL LAYOUT
PUMP AREA
BORGER DENVER PRODUCTS LINE
CALHAN PUMP STATION EL PASO CO,CO



JA NO.	75-9853	FILE CODE	492
AFE NO.	PD-562	SCALE	3/8"=1'
DWG NO.	LD-587		
SH NO.	E-37-4		

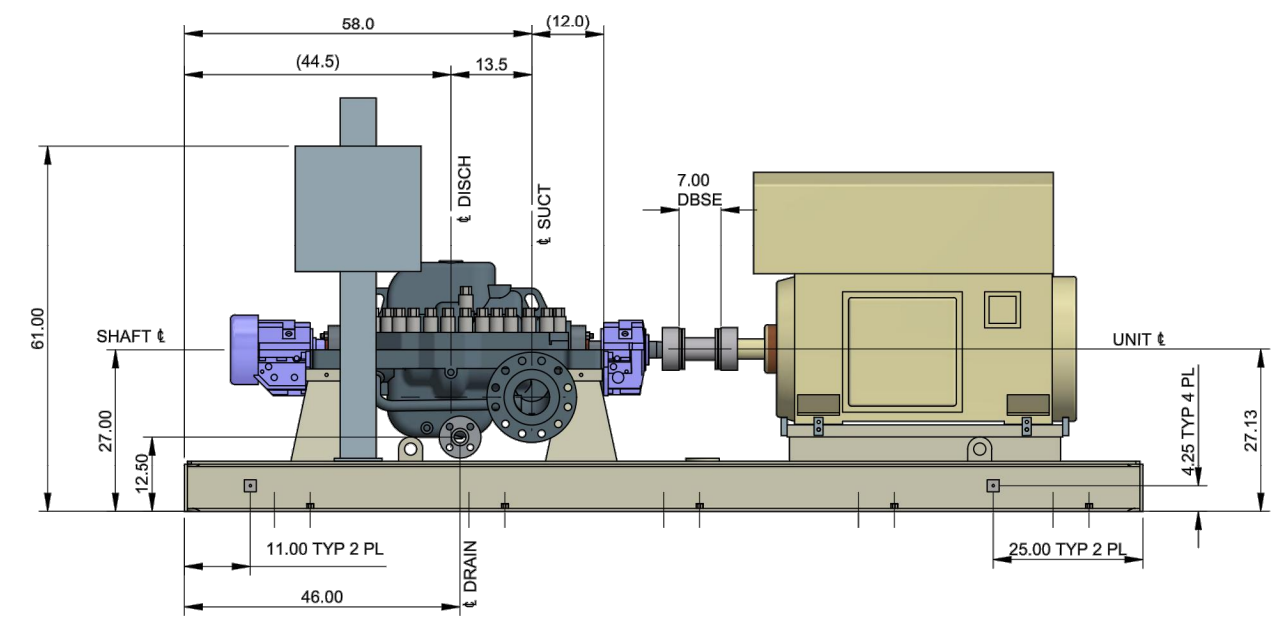
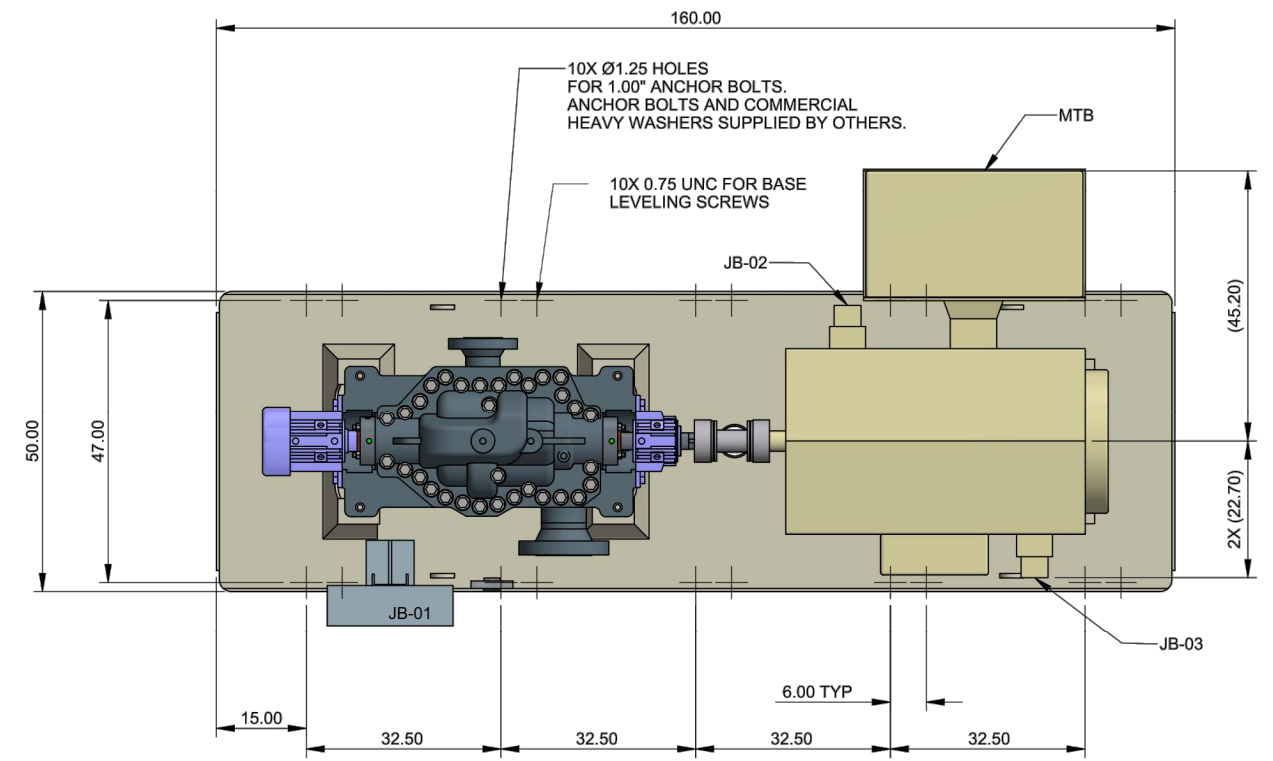
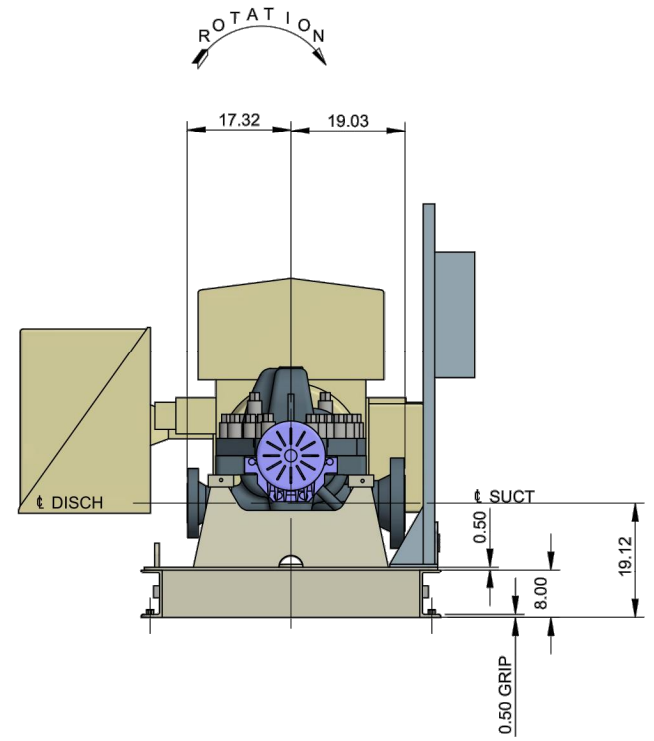


FOR BIDS	
FOR APPR	
FOR CONST	
DRAWN	CWG 07/23/21
CHECKED	DPC 07/23/21
APP'D	JJT 07/23/21

CALHAN
EXISTING LIGHTING
SHEET 5
19 OF 26
EL PASO COUNTY, COLORADO

SCALE	N.T.S.
PROJECT NO.	204-3417
FILE NAME (aka) DOCUMENT NUMBER	CALH-SDP-0006

FOR REFERENCE ONLY -- OFFICIAL DOCUMENT STORED ELECTRONICALLY PLOT DATE = 7/29/21 PLOTTED BY : CHASE GIFFORD FILE NAME : C:\PWORKING\REV\MS36215\CALHAN PERMIT FLING.DWG



CONTRACT DATA			
PURCHASER: PHILLIPS P66			
USER: PHILLIPS P66			
JOB/PROJECT: CALHAN UPGRADE			
CUST. P.O. NO.: 4527838566			
SERVICE: MAINLINE PUMP			
INSTALLED AT: CALHAN STATION			
PUMP OEM: SULZER PUMPS (US) INC.			
SULZER ORDER NO.: 100374123			
IDENTIFICATION NUMBERS			
SULZER SERIAL NO.	CUSTOMER TAG NO'S		
	PUMP	DRIVER	
10032908	P-001	M-001	
-	-	-	
-	-	-	

PROFESSIONAL ENGINEER SEALS ARE APPLIED TO THE COVER SHEET.			
IR 4X11 DA		FOUNDATION & NOZZLE LOCATIONS	
100374123		GENERAL ARRANGEMENT	
SULZER		PART No.	PGA1003987410010-01
		E	2 / 2

MODIFICATION		NAME	DATE
Ⓒ	UPDATED MOTOR MODEL	D. PATTERSON	30-OCT-2020
Ⓑ	ADDED DRAIN FLG. ADJUSTED JBOX HEIGHT	D. PATTERSON	19-OCT-2020
Ⓐ	REVISED PER CUSTOMER COMMENTS.	D. PATTERSON	20-AUG-2020

COMPONENT INFORMATION	DESIGN GROUP	SULZER PUMPS (US) INC.	CAD - DRAWING	ORIGINAL SCALE
REPLACED BY	SUBSTITUTE FOR			

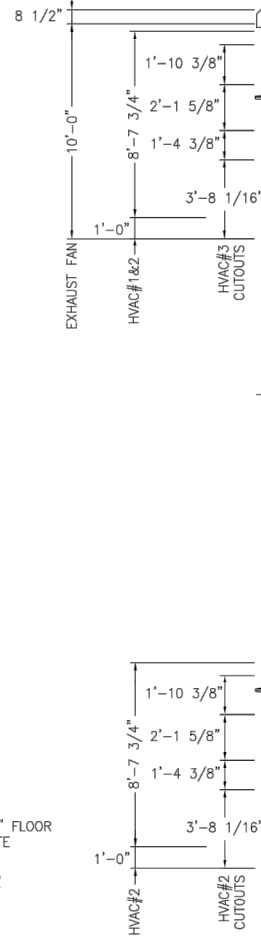
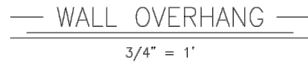
DRAWN	CWG	07/23/21
CHECKED	DPC	07/23/21
APP'D	JT	07/23/21

CALHAN ELEVATION PUMP SKID GENERAL ARRANGEMENT SHEET 2 21 OF 26 EL PASO COUNTY, COLORADO	
SCALE	N.T.S.
PROJECT NO	204-3417
FILE NAME (aka)	DOCUMENT NUMBER
CALH-SDP-0008	

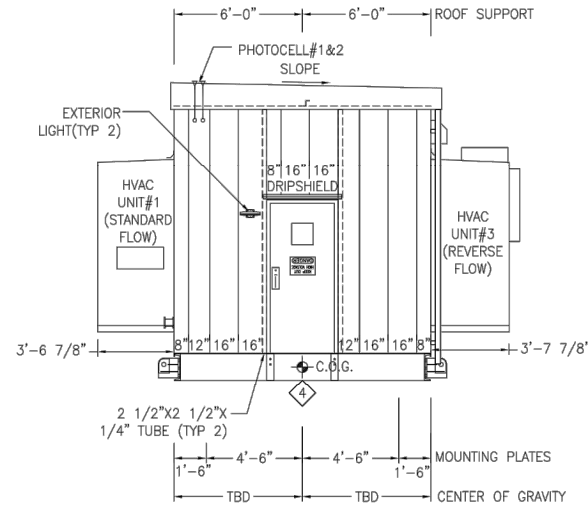
NO.	REVISION	BY	DATE
0	ISSUED FOR PERMITTING	CWG	07/23/2021
		DPC	DPC

FOR BIDS	
FOR APPR	
FOR CONST	
DRAWN	CWG 07/23/21
CHECKED	DPC 07/23/21
APP'D	JT 07/23/21

SCALE	N.T.S.
PROJECT NO	204-3417
FILE NAME (aka)	DOCUMENT NUMBER
CALH-SDP-0008	



NOTES:
1. CUSTOMER TO VERIFY ALL WALL CUTOUT SIZES & LOCATIONS
2. PROVIDE TEMPORARY SHIPPING COVER PLATES ON ALL WALL OPENINGS IF EQUIPMENT IS REMOVED FOR SHIPMENT.



PROFESSIONAL ENGINEER
SEALS ARE APPLIED TO THE
COVER SHEET.



DIMENSIONAL
TOLERANCES
+ 1/4"
- 1/4"



PROTECT CONTROLS, INC.
3212 Old Highway 105 East Conroe, Texas 77301-6458
www.protectcontrols.com Tel.: 713.691.5183

CUSTOMER:	PHILLIPS 66/ROONEY ENGINEERING	S.O. NO.:	30850
TITLE: P66 CALHAN ELECTRICAL EQUIPMENT CENTER RFQ RECOVERY PROJECT - RZSS6 LER ELEVATIONS			

DRAWN: JAC	DATE: 1/24/20	DRAWING NUMBER: 30850-500
APPROVED: CS	SCALE: $\frac{3}{16}" = 1'-0"$	

[illegible]

FOR REFERENCE ONLY - OFFICIAL DOCUMENT STORED ELECTRONICALLY PLOT DATE = 7/29/21 PLOTTED BY : CHASE GIFFORD FILE NAME : C:\WORKING\REV\NMS36215\CALHAN PERMIT PLUNG.DWG

JC16020 3PH 2500.0kVA HV=24940 LV=2400Y/1385 ASA 61 LIGHT GRAY 2 COAT URETHANE MINERAL OIL Order PHTA1082 - 1

DOWNLOAD INSTRUCTION BOOKS AT WWW.ABB.COM/TRANSFORMERS
DESCARGAR LIBRO DE INSTRUCCIONES EN WWW.ABB.COM/TRANSFORMERS

THIS OUTLINE IS FOR ERECTION OR MOUNTING PURPOSES. IT IS NOT TO SCALE AND SHOULD NOT BE REGARDED AS INDICATING THE EXACT DETAILS OF CONSTRUCTION.

- 01 TANK
- 02 CABINET BOLTED-ON, REMOVABLE SILLS, OPEN BOTTOM 1.25 INCH FLANGE, HINGED LIFT-OFF DOOR, PROVISION FOR PADLOCK, STOP IN OPEN POSITION.
- 03 WEATHER COVER, REMOVABLE OR HINGED
- 04 TANK TO BASE GROUND STRAP AND PROVISIONS FOR TANK TO CABINET GROUND LIFTING HOOKS, 4 TOTAL
- 05 SHIPPING BRACKETS
- 06 1 INCH FILL PLUG
- 07 1 INCH DRAIN PLUG WITH SCHRADER VALVE
- 08 HANDHOLE, 9.5 INCH X 17.5 INCH, BOLTED-ON COVER
- 09 NAMEPLATE MOUNTED ON TANK WALL
- 10 GROUND PAD .50-13-TAP, HV AND
- 11 LV COMPARTMENT
- 12 PRESSURE RELIEF DEVICE
- 13 LV NEUTRAL GROUND PAD .50-13-TAP WITH GROUND STRAP
- 14 HV/LV BARRIER (STEEL)
- 15 LEFT SIDE COOLER
- 16 REAR COOLER
- 21 LIVE FRONT HIGH VOLTAGE BUSHING, 2 HOLE ANSI SPADES
- 25 TAP CHANGER
- 35 LOW VOLTAGE BUSHING, ANSI SPADES, WITH 6 HOLES.
- 55 ARRESTER GROUND PADS
- 60 PRESSURE VACUUM GAUGE
- 65 OIL LEVEL GAUGE
- 66 THERMOMETER
- 68 DRAIN VALVE WITH SAMPLER
- 70 PARKING STAND
- 76 PADLOCKABLE EXTERNAL DRAIN VALVE BOX
- 77 PADLOCKABLE GAUGE BOX
- 78 GROUND BAR

- ** ANSI 61 GRAY PAINT (MUNSELL 8.3G 6.1/D.54)
- ** UL APPROVED
- ** 18KV MCOV 15.30 LIVE FRONT ARRSTER

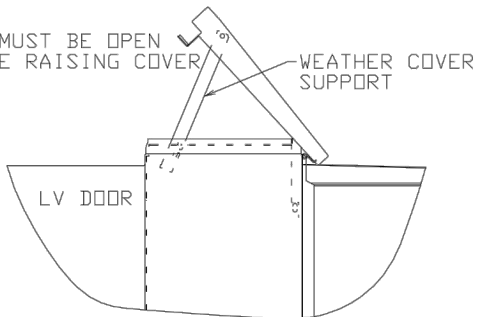


ABB INC.				REV NO
TITLE 0L3PPADMNT DEF XXXFIN XXU/M XXNOTE XX				01
DES 3PH OUTLINE				USER PLDAKO
DIMENSIONS IN INCHES-SCALE 1				CADAM 0190402N1NNNCNY201,1
D, Koblerec 091520 APPD XXXXX MMDYY				J801CNY2
D SPEC XXXXXX APPD				
ENG. REF XXXXXX LAYOUT MODEL ID				
ENGINEERING DEPT. JEFFERSON CITY, MO. USA				

PROFESSIONAL ENGINEER
SEALS ARE APPLIED TO THE
COVER SHEET.



H. V. 24940
KVA 2500
L. V. 2400Y/1385



FOR BIDS		
FOR APPR		
FOR CONST		
DRAWN	CWG	07/23/21
CHECKED	DPC	07/23/21
APPD	JT	07/23/21

CALHAN
ELEVATION
MV TRANSFORMER
24 OF 26
EL PASO COUNTY, COLORADO

SCALE	N.T.S.
PROJECT NO	204-3417
FILE NAME (aka) DOCUMENT NUMBER	
CALH-SDP-0011	

NO.	REVISION	BY	DATE
0	ISSUED FOR PERMITTING	CWG	07/23/2021
		DPC	DPC

FOR REFERENCE ONLY - OFFICIAL DOCUMENT STORED ELECTRONICALLY PLOT DATE = 7/29/21 PLOTTED BY : CHASE GIFFORD FILE NAME : C:\PWORKING\REV\MS36215\CALHAN PERMIT PLING.DWG

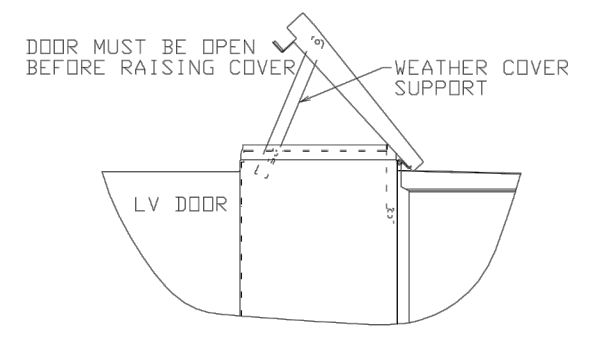
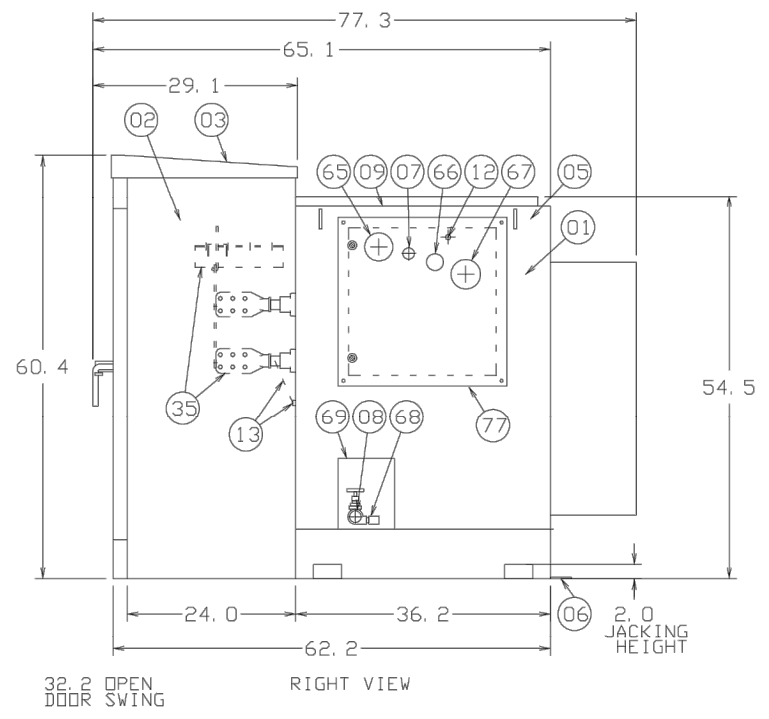
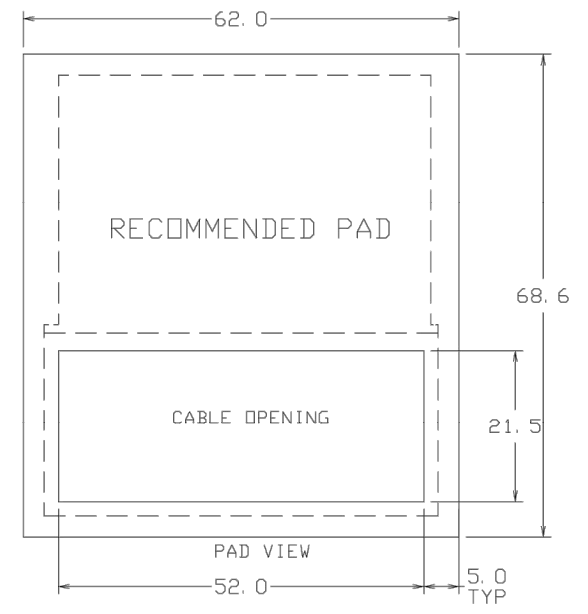
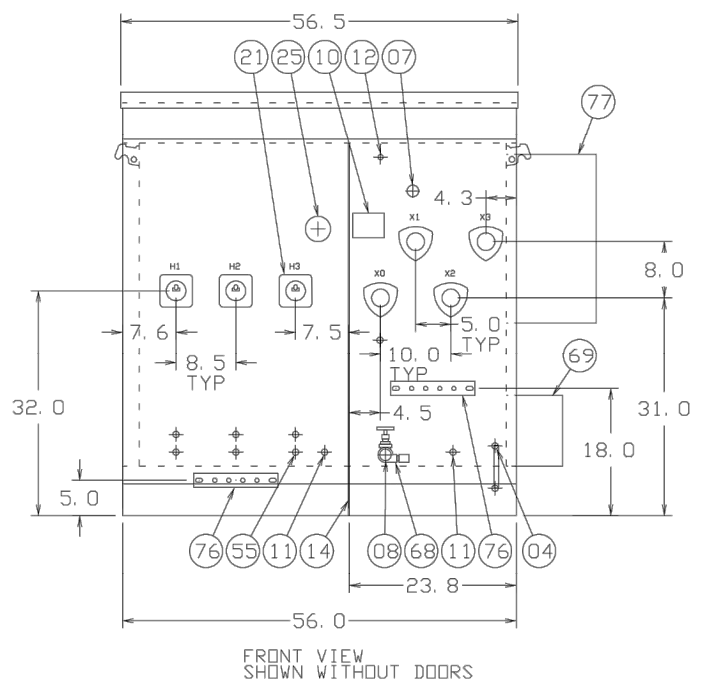
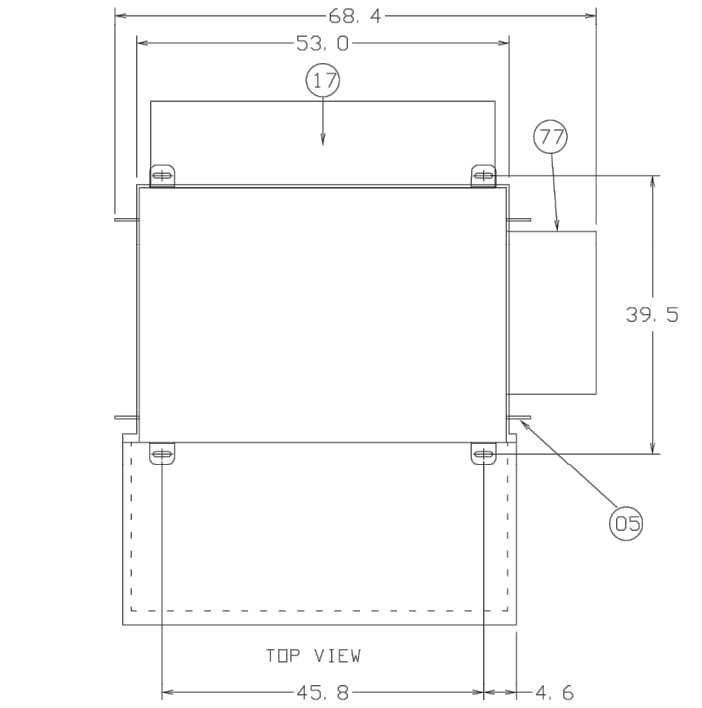
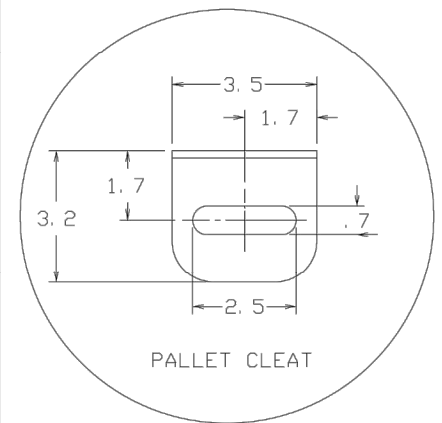
JC13953 3PH 500.0kVA HV=2400 LV=480Y/277 ASA 61 LIGHT GRAY 2 COAT URETHANE MINERAL OIL Order PHTA1014 - 1

DOWNLOAD INSTRUCTION BOOKS AT WWW.ABB.COM/TRANSFORMERS
DESCARGAR LIBRO DE INSTRUCCIONES EN WWW.ABB.COM/TRANSFORMERS

THIS OUTLINE IS FOR ERECTION OR MOUNTING PURPOSES. IT IS NOT TO SCALE AND SHOULD NOT BE REGARDED AS INDICATING THE EXACT DETAILS OF CONSTRUCTION.

- 01 TANK
- 02 CABINET BOLTED-ON, REMOVABLE SILLS, OPEN BOTTOM 1.25 INCH FLANGE, HINGED LIFT-OFF DOOR, PROVISION FOR PADLOCK, STOP IN OPEN POSITION.
- 03 WEATHER COVER, REMOVABLE OR HINGED
- 04 TANK TO BASE GROUND STRAP AND PROVISIONS FOR TANK TO CABINET GROUND LIFTING HOOKS, 4 TOTAL
- 05 SHIPPING BRACKETS
- 06 1 INCH FILL PLUG WITH SCHRADER VALVE
- 07 1 INCH DRAIN PLUG
- 08 HANDHOLE, 9.5 INCH X 17.5 INCH, BOLTED-ON COVER
- 09 NAMEPLATE MOUNTED ON TANK WALL
- 10 GROUND PAD .50-13-TAP, HV AND LV COMPARTMENT
- 11 PRESSURE RELIEF DEVICE
- 12 LV NEUTRAL GROUND PAD .50-13-TAP WITH GROUND STRAP
- 13 HV/LV BARRIER (STEEL)
- 14 REAR COOLER
- 21 HIGH VOLTAGE BUSHING, PORCELAIN
- 25 LIVE FRONT WITH 2-HOLE SPADE
- 35 TAP CHANGER
- 36 LOW VOLTAGE BUSHING, ANSI SPADES, WITH 6 HOLES AND SPADE SUPPORTS.
- 55 ARRESTER MOUNTING PADS
- 65 PRESSURE VACUUM GAUGE
- 67 OIL LEVEL GAUGE
- 67 THERMOMETER
- 68 DRAIN VALVE WITH SAMPLER
- 69 EXTERNAL DRAIN VALVE PADLOCKABLE BOX
- 76 GROUND BUS- COPPER BAR WITH FOUR .56 DIA HOLES (1/4" X 2" X 12")
- 77 EXTERNAL GAUGE BOX (SST)

- ** COLOR: ANSI 61 GRAY (MUNSELL 8.3G 6.1/0.54)
- ** NITROGEN BLANKET
- ** UL APPROVED
- ** IMPACT INDICATOR
- ** STAINLESS STEEL HARDWARE
- ** 18 KV MCOV 15.30 LIVE FRONT ARRESTER
- ** 5000' ALTITUDE
- ** IRIS CAP-ENV-24 INFRARED WINDOW IN HV DOOR AND CAP-ENV-12 WINDOW IN LV DOOR
- ** TWO PENTAHEAD SOCKETS



PROFESSIONAL ENGINEER
SEALS ARE APPLIED TO THE
COVER SHEET.



CUSTOMER: PHILLIPS 66		ABB INC.		REV NO 01
GO&ITEM X	H. V. 2400 DELTA	TITLE 0L3PPADMNT	DEF XXXIFIN XXU/M XX	NOTE XX
KVA 500/560	L. V. 480Y/277	DES 3PH OUTLINE	USER HEMKEI	
		DIMENSIONS IN INCHES-SCALE 1		CADAM 0190209N1NNNMRV01,1
		HEMEYER	080619	APPD XXXXX
		D SPEC XXXXXX	APPD	MMDYY
		ENG. REF XXXXXX	LAYOUT MODEL ID	J801CMRV
		ENGINEERING DEPT.		JEFFERSON CITY, MO. USA

NO.	REVISION	BY	DATE																	
0	ISSUED FOR PERMITTING	CHKD	APP'D																	
		CWG	07/23/2021																	
		DPC	DPC																	

FOR BIDS	
FOR APPR	
FOR CONST	
DRAWN	CWG
CHECKED	DPC
APP'D	JT
	07/23/21
	07/23/21
	07/23/21

CALHAN
ELEVATION
LV TRANSFORMER
25 OF 26
EL PASO COUNTY, COLORADO

SCALE
N.T.S.
PROJECT NO 204-3417
FILE NAME (aka) DOCUMENT NUMBER
CALH-SDP-0012

LAND SURVEY PLAT

Of a parcel of land, Situate in the Northeast Quarter of Section 21,
Township 11 South, Range 61 West of the 6th P.M., County of El Paso, State of Colorado

PROPERTY DESCRIPTION

Being that parcel of property described in Book 1460 at Page 123 as recorded as Reception No. 939430 of the Records of El Paso County, located in the Northeast Quarter (NE 1/4) of Section Twenty-One (21), Township Eleven South (T.11S.), Range Sixty-One West (R.61W.) of the Sixth Principal Meridian (6th P.M.), County of El Paso, State of Colorado and being more particularly described as follows:

Commencing at the Northeast corner of said Section 21 and assuming the East line of said Northeast Quarter as bearing S 00° 39' 22" W, being a Grid Bearing of the Colorado State Plane Coordinate System, Central Zone, North American Datum 1983/2011, a distance of 2,594.94 feet with all other bearings contained herein relative thereto;

THENCE S 48° 58' 18" W a distance of 2,102.60 feet to the intersection of Phillips Petroleum Company's 6" Barger to Denver Products Pipeline with the Southerly right-of-way line of U.S. Highway 24 and the POINT OF BEGINNING;

THENCE S 36° 22' 24" W along the said Southerly right-of-way line of U.S. Highway 24 a distance of 20.38 feet to a line parallel with and twenty feet Southwesterly of, as measured at a right angle to the said Phillips Petroleum Company's 6" Barger to Denver Products Pipe Line;

THENCE along said parallel line S 42° 32' 26" E a distance of 1,039.60 feet;

THENCE N 47° 43' 30" E parallel with the centerline of said U.S. Highway 24, a distance of 209.00 feet to a line parallel with and 189.00 feet Northeast of, as measured at a right angle to the said Phillips Petroleum Company's 6" Barger to Denver Products Pipe Line;

THENCE along said parallel line N 42° 32' 26" W a distance of 1,051.89 feet to a point on the Southerly right-of-way of said U.S. Highway 24;

THENCE along said Southerly right-of-way of said U.S. Highway 24, S 47° 43' 30" W parallel with the centerline of said U.S. Highway 24 a distance of 147.60 feet to a point where the right-of-way increases in width;

THENCE along said Southerly right-of-way of said U.S. Highway 24, S 36° 22' 24" W a distance of 42.19 feet to the POINT OF BEGINNING.

Said described parcel of land contains 219,466 Square Feet or 5.038 Acres, more or less (±), and is subject to any rights-of-way or other easements of record or as now existing on said described parcel of land.

BASIS OF BEARINGS AND LINEAL UNIT DEFINITION

Assuming the East line of the Northeast Quarter of Section 21, T.11S., R.61W., as bearing South 00°39'22" West being a Grid Bearing of the Colorado State Plane Coordinate System, North Zone, North American Datum 1983/2011, a distance of 2,594.94 feet with all other bearings contained herein relative thereto.

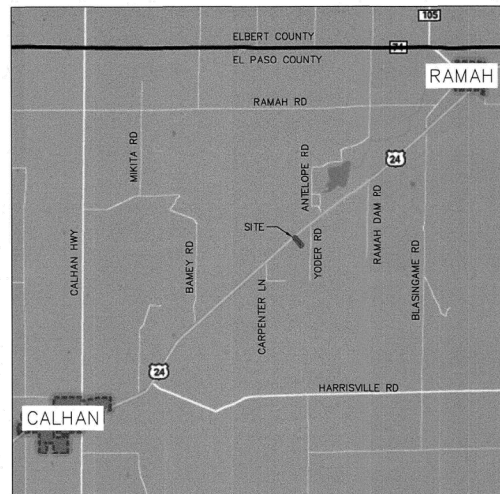
The linear dimensions as contained herein are based upon the "U.S. Survey Foot."

SURVEYOR'S STATEMENT

I, David B. Dusdal, a Colorado Registered Professional Land Surveyor, do hereby state that this Land Survey Plat was prepared from an actual survey under my personal supervision, that the monumentation as indicated hereon was found or set as shown, and that the foregoing plat is an accurate representation thereof, all this to the best of my knowledge, information and belief.



David B. Dusdal - On Behalf Of King Surveyors
Colorado Registered Professional
Land Surveyor #228650



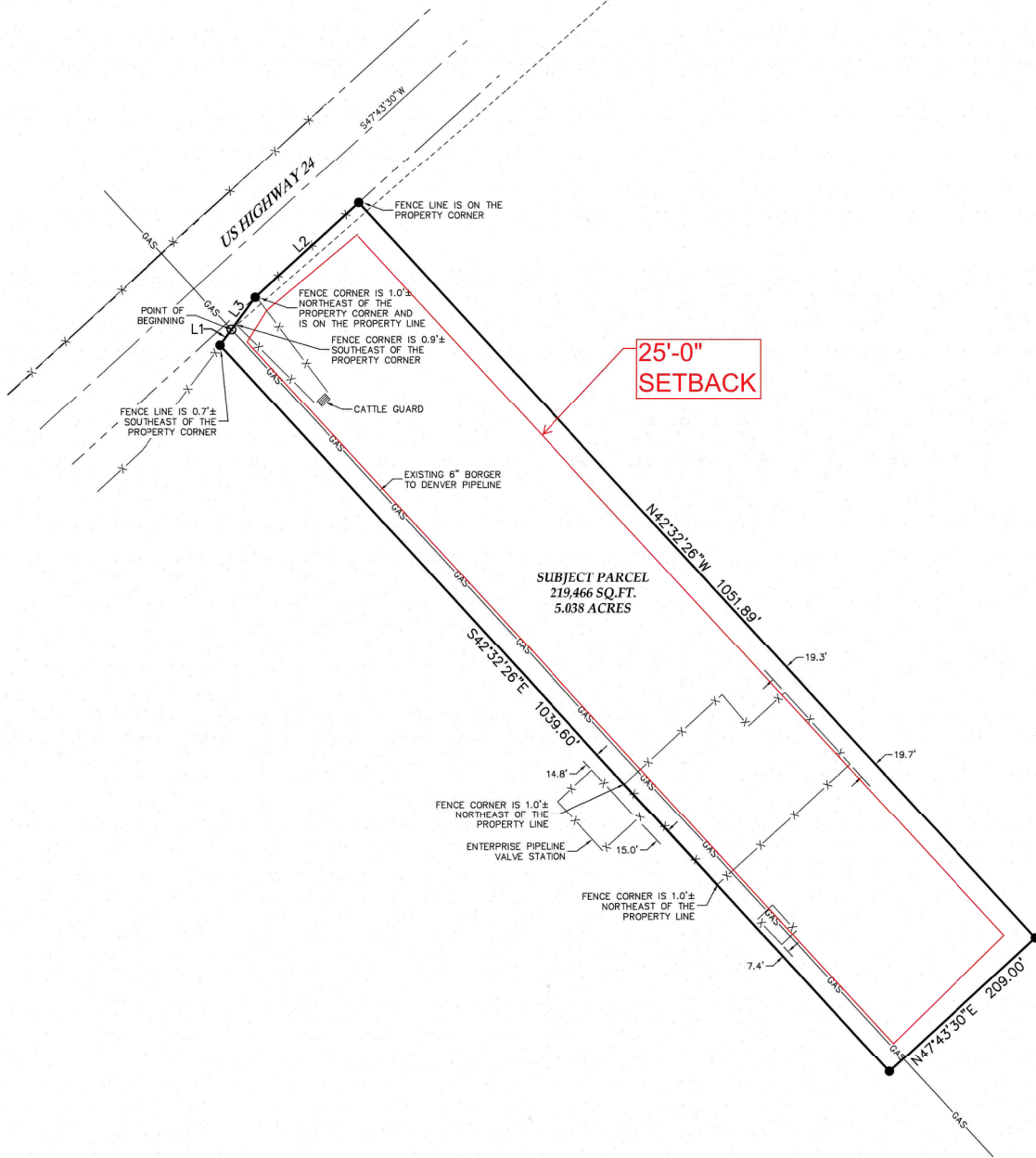
VICINITY MAP
(NOT TO SCALE)

NOTICE

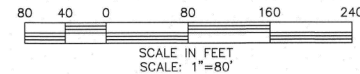
According to Colorado law you must commence any legal action based upon any defect in this survey within three years after you first discover such defect. In no event may any action based upon any defect in this survey be commenced more than ten years from the date of the certification shown hereon. (13-80-106 C.R.S. 2012)

TITLE COMMITMENT NOTE

At the request of our client, recorded rights-of-way and easements were not researched and recorded and apparent rights-of-way and easements are not shown hereon. (38-51-106 C.R.S. 1994)



NORTHEAST CORNER
SECTION 21, T.11S., R.61W.
FOUND 3 1/4" ALUMINUM CAP
ON #6 REBAR, PARTIALLY ILLEGIBLE



LEGEND

---	CENTERLINE
---	SECTION LINE
---	RIGHT OF WAY LINE
---	BOUNDARY LINE
■	FOUND ALIQUOT CORNER AS DESCRIBED
●	SET 24" OF #4 REBAR WITH A YELLOW PLASTIC CAP STAMPED KS, LS 28650
○	CALCULATED POSITION

LINE TABLE		
LINE	BEARING	LENGTH
L1	S36°22'24"W	20.38'
L2	S47°43'30"W	147.60'
L3	S36°22'24"W	42.19'

PROFESSIONAL ENGINEER
SEALS ARE APPLIED TO THE
COVER SHEET.



CALHAN
LAND SURVEY PLAT
26 OF 26
EL PASO COUNTY, COLORADO

DATE:	11/22/2019
FILE NAME:	20190737LSP
SCALE:	1"=80'
DRAWN BY:	CSK
CHECKED BY:	DBD

KING SURVEYORS
650 E. Garden Drive | Windsor, Colorado 80550
phone: (970) 686-5011 | email: contact@KingSurveyors.com



DATE:	
REVISIONS:	

LAND SURVEY PLAT
FOR
PHILLIPS 66 COMPANY
32795 US Highway 24
Calhan, CO 80808

PROJECT #
20190737

1
SHEET 1 OF 1

N.T.S.
PROJECT NO 204-3417
FILE NAME (aka) DOCUMENT NUMBER
CALH-SDP-0013



FOR BIDS		
FOR APPR		
FOR CONST		
DRAWN	CWG	07/23/
CHECKED	DPC	07/23/
APP'D	JJT	07/23/