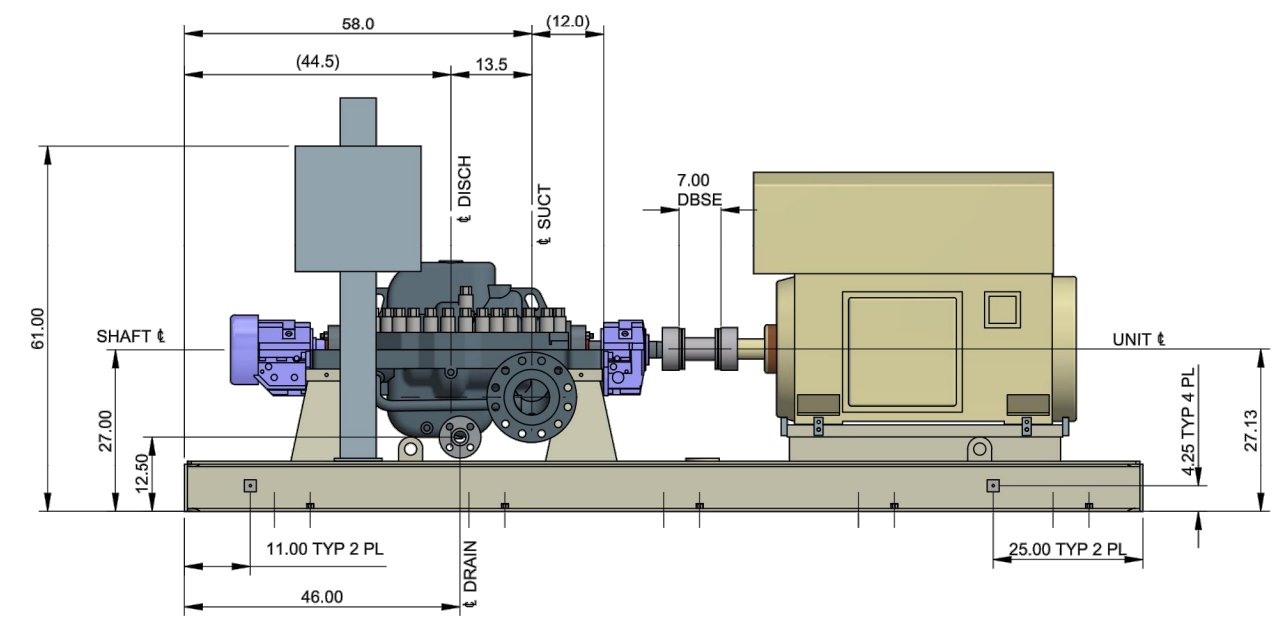
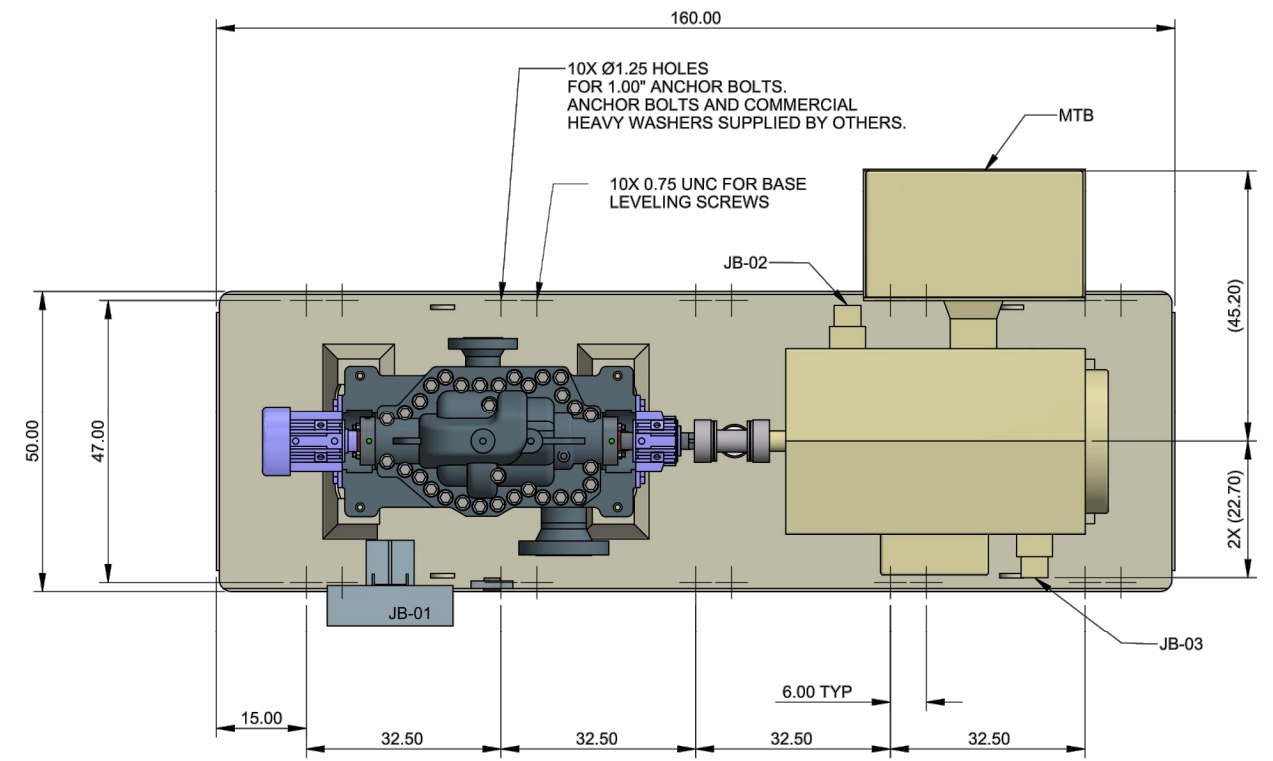
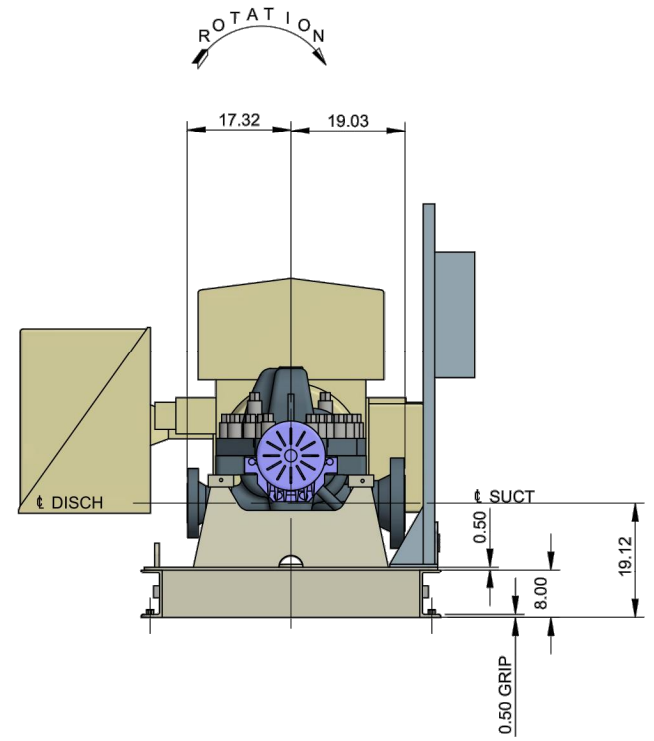


FOR REFERENCE ONLY -- OFFICIAL DOCUMENT STORED ELECTRONICALLY PLOT DATE = 7/29/21 PLOTTED BY : CHASE GIFFORD FILE NAME : C:\WORKING\REV\MS36215\CALHAN PERMIT FLING.DWG



CONTRACT DATA		
PURCHASER: PHILLIPS P66		
USER: PHILLIPS P66		
JOB/PROJECT: CALHAN UPGRADE		
CUST. P.O. NO.: 4527838566		
SERVICE: MAINLINE PUMP		
INSTALLED AT: CALHAN STATION		
PUMP OEM: SULZER PUMPS (US) INC.		
SULZER ORDER NO.: 100374123		
IDENTIFICATION NUMBERS		
SULZER SERIAL NO.	CUSTOMER TAG NO'S	
	PUMP	DRIVER
10032908	P-001	M-001
-	-	-
-	-	-

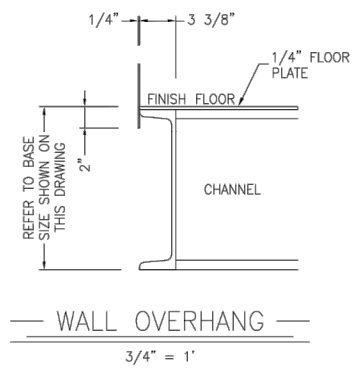
PROFESSIONAL ENGINEER SEALS ARE APPLIED TO THE COVER SHEET.			(303) 792-5911	
Ⓒ	UPDATED MOTOR MODEL	D. PATTERSON	30-OCT-2020	
Ⓑ	ADDED DRAIN FLG. ADJUSTED JBOX HEIGHT	D. PATTERSON	19-OCT-2020	
Ⓐ	REVISED PER CUSTOMER COMMENTS.	D. PATTERSON	20-AUG-2020	
MODIFICATION		NAME	DATE	
COMPONENT INFORMATION		DESIGN GROUP	SULZER PUMPS (US) INC.	
REPLACED BY		SUBSTITUTE FOR	ORIGINAL SCALE	
IR 4X11 DA		FOUNDATION & NOZZLE LOCATIONS		
100374123		GENERAL ARRANGEMENT		
SULZER		PART No.	E	PGA1003987410010-01 2 / 2

NO.	REVISION	BY	DATE											FOR BIDS		CALHAN		SCALE
0	ISSUED FOR PERMITTING	CHKD CWC	APP'D DPC	07/23/2021													ELEVATION	N.T.S.
		DPC															PUMP SKID GENERAL ARRANGEMENT SHEET 2	PROJECT NO 204-3417
																	21 OF 26	FILE NAME (aka) DOCUMENT NUMBER
																	EL PASO COUNTY, COLORADO	CALH-SDP-0008

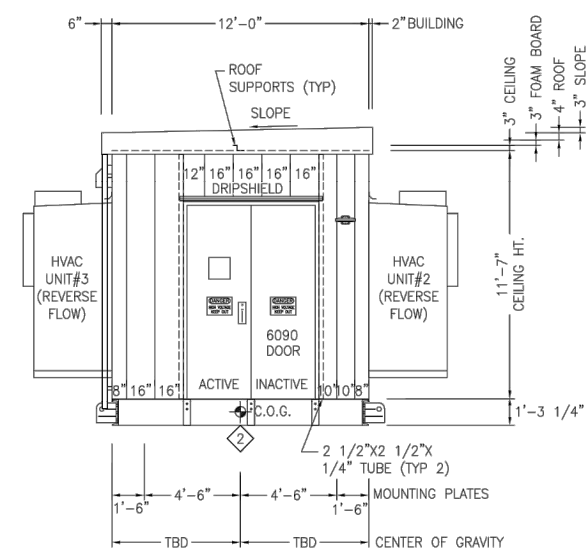
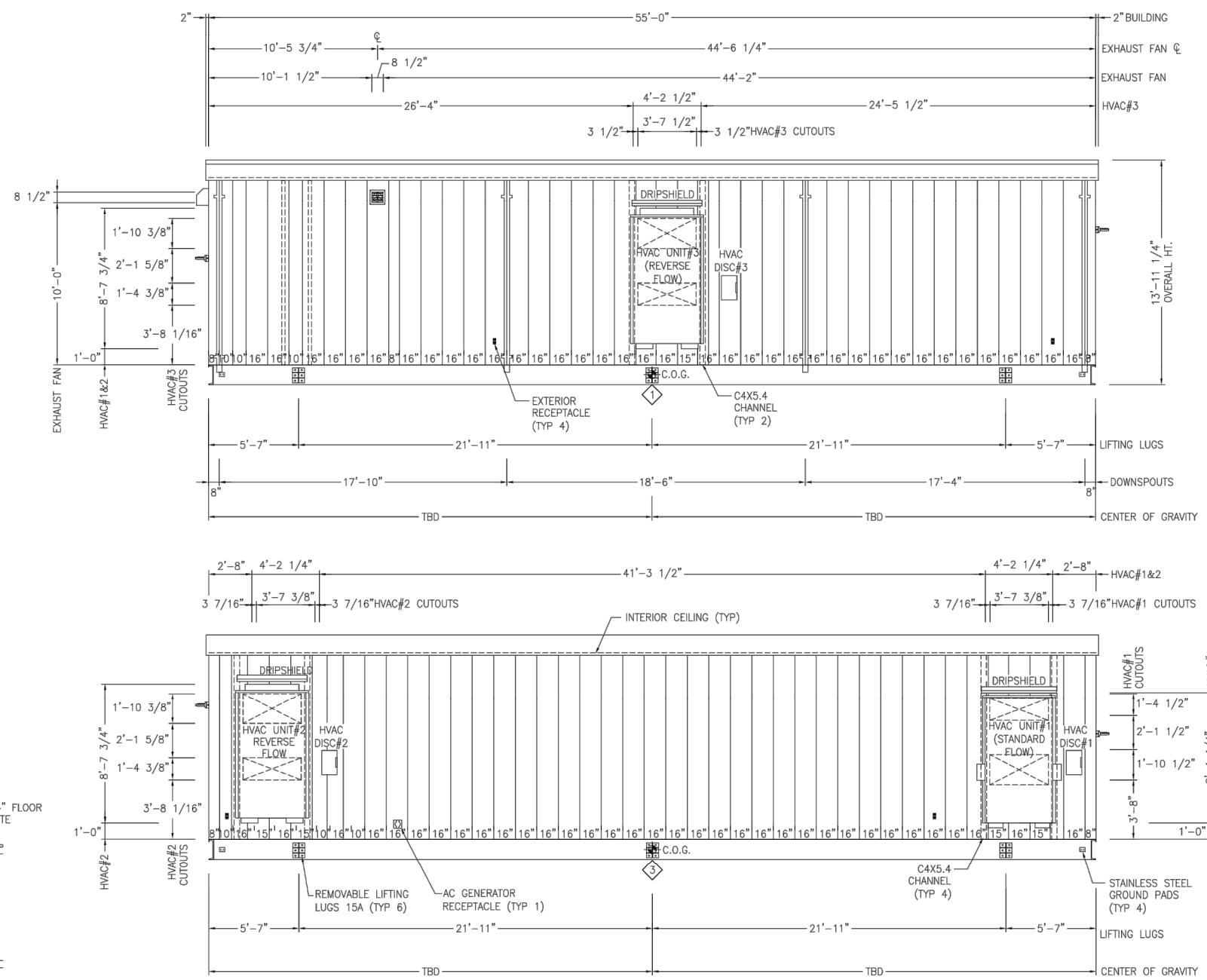
FOR APPR	
FOR CONST	
DRAWN	CWC 07/23/21
CHECKED	DPC 07/23/21
APP'D	JT 07/23/21

FOR REFERENCE ONLY - OFFICIAL DOCUMENT STORED ELECTRONICALLY
PLOT DATE = 7/29/21
PLOTTED BY : CHASE GIFFORD
FILE NAME : C:\V\WORKING\REV\MS36215\CALHAN PERMIT FLING.DWG

38
37
36
35
34
33
32
31
30
29
28
27
26
25
24
23
22
21
20
19
18
17
16
15
14
13
12
11
10
9
8
7
6
5
4
3
2
1
A



NOTES:
1. CUSTOMER TO VERIFY ALL WALL CUTOUT SIZES & LOCATIONS
2. PROVIDE TEMPORARY SHIPPING COVER PLATES ON ALL WALL OPENINGS IF EQUIPMENT IS REMOVED FOR SHIPMENT.



PROFESSIONAL ENGINEER
SEALS ARE APPLIED TO THE
COVER SHEET.

TETRA TECH ROONEY
(303) 792-5911

PROTECT CONTROLS, INC.
3212 Old Highway 105 East Conroe, Texas 77301-6458
www.protectcontrols.com Tel.: 713.691.5183

CUSTOMER: PHILLIPS 66/ROONEY ENGINEERING S.O. NO.: 30850

TITLE: P66 CALHAN ELECTRICAL EQUIPMENT CENTER RFQ
RECOVERY PROJECT - RZSS6 LER
ELEVATIONS

DRAWN: JAC DATE: 1/24/20 DRAWING NUMBER: 30850-500

APPROVED: CS SCALE: 3/16" = 1'-0"

THIS DRAWING AND THE INFORMATION HEREIN CONTAINED ARE THE PROPERTY OF PROTECT CONTROLS, INC. WHICH HAS FURNISHED THEM IN CONFIDENCE UPON THE UNDERSTANDING AND CONDITION THAT ALL PERSONS, FIRMS OR CORPORATIONS RECEIVING SUCH DRAWING AND INFORMATION SHALL BY THE ACT OF RECEIVING THEM BE DEEMED TO HAVE AGREED: TO MAKE NO COPY, DUPLICATION, DISCLOSURE OR USE WHATSOEVER OF ALL OR ANY PART THEREOF EXCEPT AS EXPRESSLY AUTHORIZED IN WRITING BY PROTECT CONTROLS, INC.: NOT TO GIVE, LEND OR OTHERWISE DISPOSE OF THIS DRAWING: AND TO RETURN THIS DRAWING PROMPTLY UPON REQUEST.

REV	DATE	DESCRIPTION	DES'R	CHK'R
0	2/17/2020	ISSUED FOR APPROVAL	JAC	CS
1	8/20/2020	REVISED FOR APPROVAL	JAC	JC

NO.	REVISION	BY	DATE
0	ISSUED FOR PERMITTING	CHG	07/23/2021
		DPC	DPC



FOR BIDS	
FOR APPR	
FOR CONST	
DRAWN	CWG 07/23/21
CHECKED	DPC 07/23/21
APP'D	JT 07/23/21

CALHAN
ELEVATION
ELECTRICAL EQUIPMENT CENTER
22 OF 26
EL PASO COUNTY, COLORADO

SCALE	N.T.S.
PROJECT NO	204-3417
FILE NAME (aka) DOCUMENT NUMBER	CALH-SDP-0009

38
37
36
35
34
33
32
31
30
29
28
27
26
25
24
23
22
21
20
19
18
17
16
15
14
13
12
11
10
9
8
7
6
5
4
3
2
1
B

FOR REFERENCE ONLY - OFFICIAL DOCUMENT STORED ELECTRONICALLY PLOT DATE = 7/29/21 PLOTTED BY : CHASE GIFFORD FILE NAME : C:\WORKING\REV\NMS36215\CALHAN PERMIT PLUNG.DWG

JC16020 3PH 2500.0kVA HV=24940 LV=2400Y/1385 ASA 61 LIGHT GRAY 2 COAT URETHANE MINERAL OIL Order PHTA1082 - 1

DOWNLOAD INSTRUCTION BOOKS AT WWW.ABB.COM/TRANSFORMERS
DESCARGAR LIBRO DE INSTRUCCIONES EN WWW.ABB.COM/TRANSFORMERS

THIS OUTLINE IS FOR ERECTION OR MOUNTING PURPOSES. IT IS NOT TO SCALE AND SHOULD NOT BE REGARDED AS INDICATING THE EXACT DETAILS OF CONSTRUCTION.

- 01 TANK
- 02 CABINET BOLTED-ON, REMOVABLE SILLS, OPEN BOTTOM 1.25 INCH FLANGE, HINGED LIFT-OFF DOOR, PROVISION FOR PADLOCK, STOP IN OPEN POSITION.
- 03 WEATHER COVER, REMOVABLE OR HINGED
- 04 TANK TO BASE GROUND STRAP AND PROVISIONS FOR TANK TO CABINET GROUND LIFTING HOOKS, 4 TOTAL
- 05 SHIPPING BRACKETS
- 06 1 INCH FILL PLUG
- 07 1 INCH DRAIN PLUG WITH SCHRADER VALVE
- 08 HANDHOLE, 9.5 INCH X 17.5 INCH, BOLTED-ON COVER
- 09 NAMEPLATE MOUNTED ON TANK WALL
- 10 GROUND PAD .50-13-TAP, HV AND
- 11 LV COMPARTMENT
- 12 PRESSURE RELIEF DEVICE
- 13 LV NEUTRAL GROUND PAD .50-13-TAP WITH GROUND STRAP
- 14 HV/LV BARRIER (STEEL)
- 15 LEFT SIDE COOLER
- 16 REAR COOLER
- 21 LIVE FRONT HIGH VOLTAGE BUSHING, 2 HOLE ANSI SPADES
- 25 TAP CHANGER
- 35 LOW VOLTAGE BUSHING, ANSI SPADES, WITH 6 HOLES.
- 55 ARRESTER GROUND PADS
- 60 PRESSURE VACUUM GAUGE
- 65 OIL LEVEL GAUGE
- 66 THERMOMETER
- 68 DRAIN VALVE WITH SAMPLER
- 70 PARKING STAND
- 76 PADLOCKABLE EXTERNAL DRAIN VALVE BOX
- 77 PADLOCKABLE GAUGE BOX
- 78 GROUND BAR

- ** ANSI 61 GRAY PAINT (MUNSELL 8.3G 6.1/D.54)
- ** UL APPROVED
- ** 18KV MCOV 15.30 LIVE FRONT ARRSTER

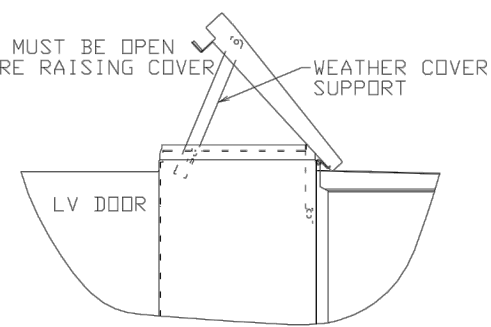
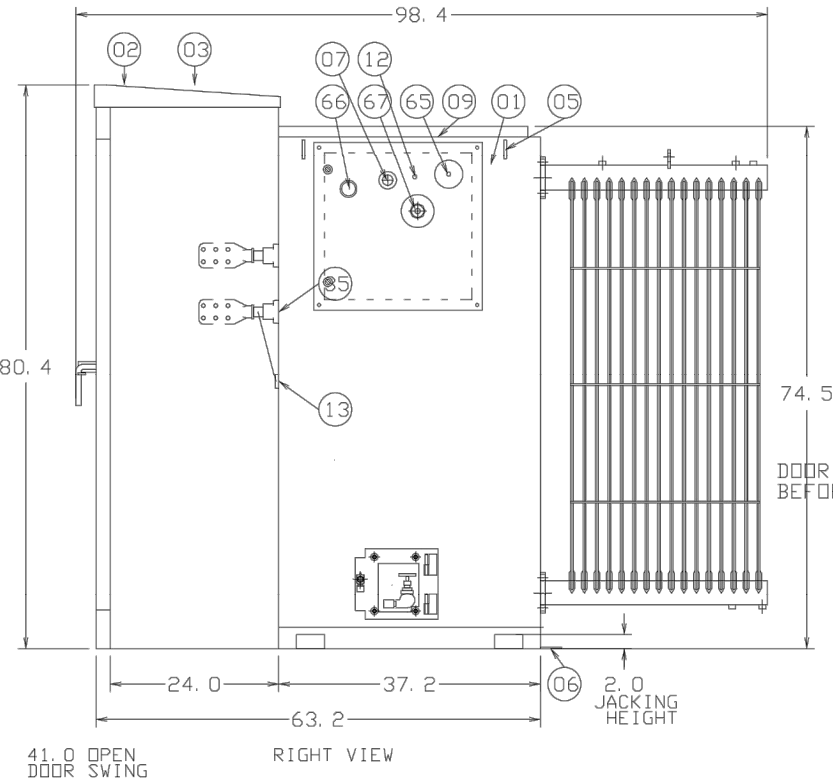
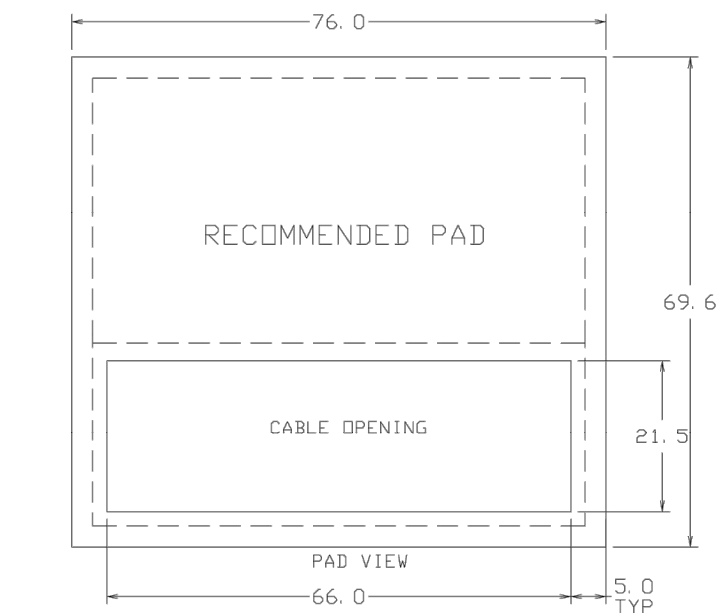
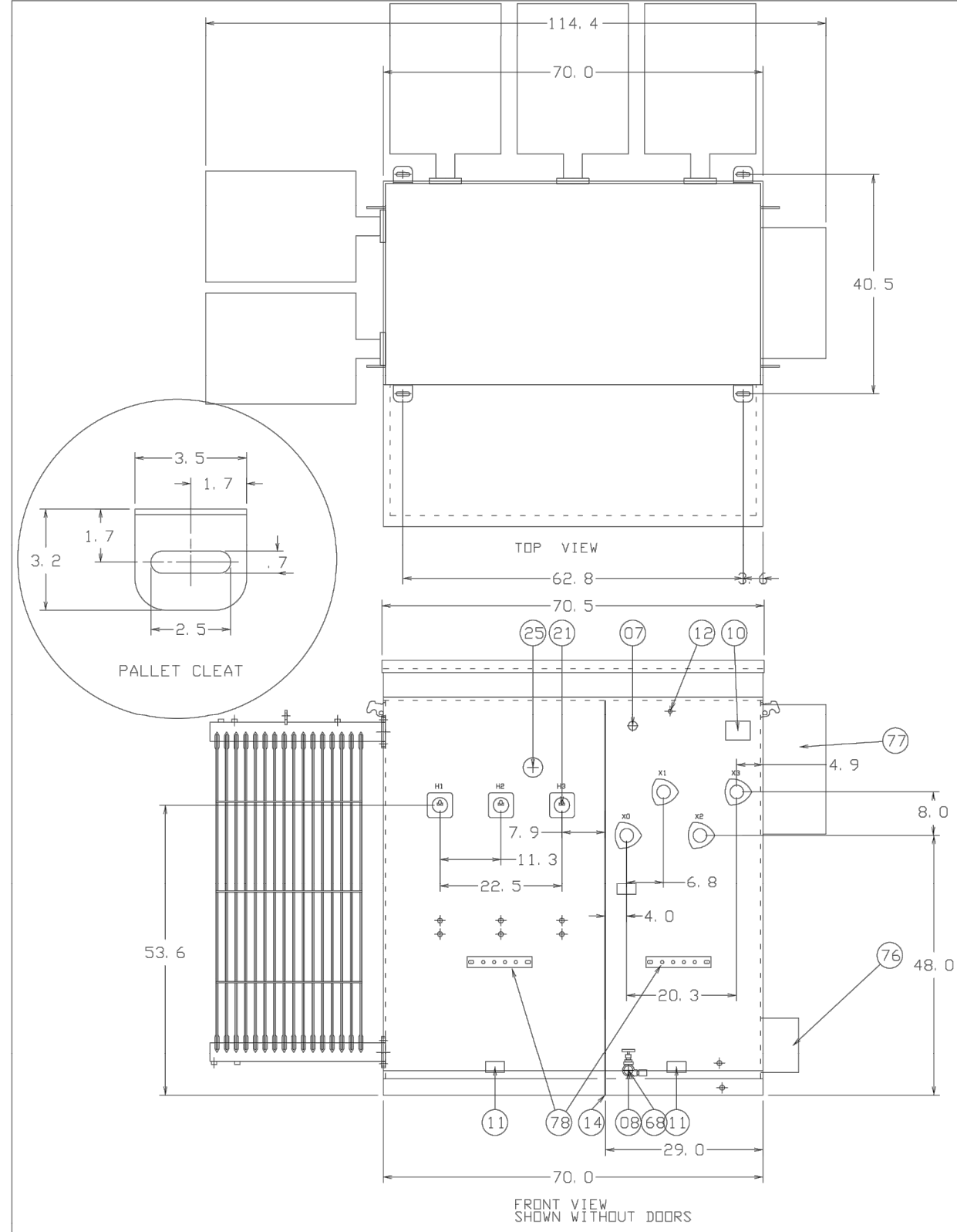


ABB INC.				REV NO
TITLE DL3PPADMNT DEF XXXIFIN XXU/M XXNOTE XX				01
DES 3PH OUTLINE				USER PLDAKO
DIMENSIONS IN INCHES-SCALE 1				CADAM 0190402N1NNNCNY201,1
D, Kobierec 091520 APPD XXXXX MMDDYY				J801CNY2
D SPEC XXXXXX APPD				
ENG. REF XXXXXX LAYOUT MODEL ID				
ENGINEERING DEPT. JEFFERSON CITY, MO. USA				



PROFESSIONAL ENGINEER SEALS ARE APPLIED TO THE COVER SHEET.



H. V. 24940
KVA 2500
L. V. 2400Y/1385

NO.	REVISION	BY	DATE	FOR BIDS	FOR APPR	FOR CONST	SCALE	PROJECT	FILE NAME (aka) DOCUMENT NUMBER
0	ISSUED FOR PERMITTING	CHKD CNG DPC	DATE 07/23/2021 DPC				N.T.S.	204-3417	CALH-SDP-0011
				PHILLIPS 66 PIPELINE LLC	EL PASO COUNTY, COLORADO				

SCALE	N.T.S.
PROJECT NO	204-3417
FILE NAME (aka) DOCUMENT NUMBER	CALH-SDP-0012

NO.	REVISION
0	ISSUED FOR PERMITTING