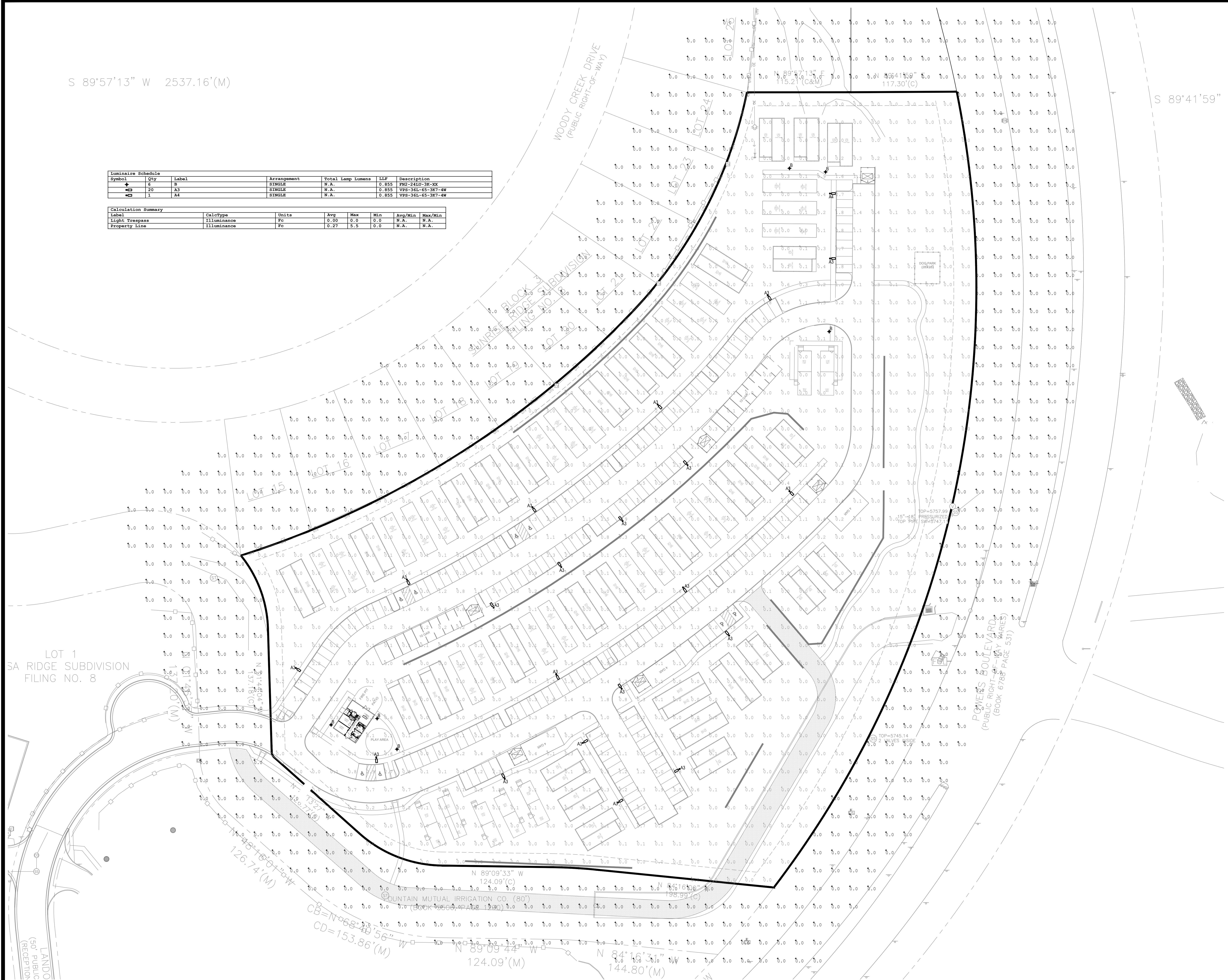


S 89°57'13" W 2537.16'(M)

Luminaire Schedule						
Symbol	Qty	Label	Arrangement	Total Lamp Lumens	SEF	Description
▲	8	B	SINGLE	N.A.	0.855	FM2-54LD-3R-XX
◆	20	A3	SINGLE	N.A.	0.855	VPS-36L-65-3K7-4W
◆	1	A4	SINGLE	N.A.	0.855	VPS-36L-65-3K7-4W

Calculation Summary						
Label	CalcType	Units	Avg	Max	Min	Avg/Min Max/Min
Light Trespass	Illuminance	Fc	0.00	0.0	0.0	N.A. N.A.
Property Line	Illuminance	Fc	0.27	5.5	0.0	N.A. N.A.



1 PHOTOMETRIC PLAN
DPE-1 SCALE: 1"=40'-0"


Chavez Tiffany & Ayers
Engineering Corporation
611 North Nevada Avenue
Colorado Springs, Colorado 80903
P (719) 636-0021


7/20/21

MESA RIDGE SUBDIVISION
PHOTOMETRIC PLAN
COLORADO SPRINGS, COLORADO

ISSUE HISTORY:

NO.	DESCRIPTION	DATE

DRAWN BY	EJR
CHECKED BY	JJA
DATE	7/20/21

DRAWING TITLE
PHOTOMETRIC PLAN

DRAWING NO.
DPE-1

ISSUE HISTORY:

[illegible]


DRAWN BY	EJR
CHECKED BY	JJA
DATE	7/20/21

DRAWING TITLE

LIGHT FIXTURE SPECIFICATIONS

DRAWING NO.

DPE-2



VIPER S

SMALL POWER LUMINAIRE

FEATURES

- Small size companion to Viper Large
- Wide choice of different LED wattage configurations
- New optical distributions
- Designed to replace HD lighting up to 400W MH or HPS
- Suitable for wet locations

Technical Review / Deep Diving

IP **WARRANTY**

- ☒ APPROVED WITH CHANGES NOTED
- ☒ PRICE AND REAGENT
- ☒ MATERIAL

Beacon has reviewed this drawing and confirmed that the design and materials are suitable for the intended application. This drawing is for informational purposes only and is not intended to be used as a basis for construction. The user is responsible for ensuring that the design and materials are suitable for the intended application. The user is responsible for ensuring that the design and materials are suitable for the intended application.

DATE 04/20/20 **LOCATION** PROJECT: **5kVIEW**

TYPE A **CATALOG #** VPS-38L-65-30-55-UNV-A-VGT

DATE 04/20/20 **LOCATION** PROJECT: **5kVIEW**


TYPE A **CATALOG #** VPS-38L-65-30-55-UNV-A-VGT

FEATURES

- Small size companion to Viper Large
- Wide choice of different LED wattage configurations
- New optical distributions
- Designed to replace HD lighting up to 400W MH or HPS
- Suitable for wet locations



STRIKE



CONSTRUCTION

- Manufactured with die cast aluminum
- Coated with a polyester finish that meets ASTM B771 corrosion test requirements and ASTM D522 cracking and loss of adhesion test requirements
- IP55 polyester powder coat electrostatically applied and thermocured. IP55 finish consists of a five stage pretreatment regimen with a primer, primer sealer and top coat with a thermoset TGC Polyester powder coat finish
- Finish meets the AAMA 2604 performance specification which includes passing a 1,000-hour salt spray test for corrosion resistance and tests against or loss of adhesion per ASTM D522 and resists surface impacts up to 160 joules
- External hardware is corrosion resistant


ELECTRICAL

- Available with electronic ballast or 120V/277V or 480V input 50 Hz to 60 Hz (UNV)
- Power factor is $\geq .90$ at full load
- Dimming drivers are standard, but C0 may be selected in options to external external wiring leads for dimming controls
- Components to component wiring within the luminaire may carry no more than 80% of rated ampacity and is certified by UL for use at 600VAC at 90°C or higher
- Plug disconnects are certified by UL for use at 600VAC, 15A and 15A rating applies to primary (AC) side only
- Fixture electrical component contains all LED driver components
- Optional 7-pin ANSI C83B-2/03 Twel-LoK™ pin-to-contact receptacle available. Compatible with ANSI C83B.4 external wiring connector
- Ambient operating temperature -40°C to 25°C
- Surge protection: 20kA
- Lifespan** Circuit Break (Electrical Data)

OPTICS

- Cartridge is held together with internal brass threads soldered to the board so that it can be field replaced as a one-piece optical system
- One-piece silicone gasket ensures a weathertight seal around each individual optic
- One-piece optical cartridge system consisting of an LED engine, optic, gasket and stainless steel bezel

RELATED PRODUCTS

 **Viper Large**

INSTALLATION

- Mounting patterns for horizontal, vertical, round or traditional arm mounting available. Mounting hardware included

CONTROLS (OPTIONAL)

- Available with Emerson for luminaire select dimming, timed dimming with select delay, or timed dimming based on time of night
- In addition, Viper can be specified with SineSync™ wireless control system for remote energy and maintenance costs while optimizing light quality 24/7

WARRANTY

- 5 year commercial
- See HIL Commercial and Industrial Outdoor Lighting Warranty for additional information

CERTIFICATIONS

- DALI™ (DesignLights Consortium) Qualified. Please refer to the DALI website for specific product qualifications at www.designlights.org
- Certified to UL 598 and UL 8750
- 3-6 rated for ANSI C83B.3 high vibration applications with MAF mounting

ENVIRONMENTAL

- RoHS compliant
- REACH compliant
- ISO 9001:2015 certified

KEY DATA

Parameter	Value
Lumen Range	5400-16,275
Wattage Range	55-136
Efficiency Range (LPW)	100-124
Reported Life (Hours)	70,000-60,000
Input Current Range (Amps)	0.1-1.1

ENVIRONMENTAL

- RoHS compliant
- REACH compliant
- ISO 9001:2015 certified

KEY DATA

Parameter	Value
Lumen Range	5400-16,275
Wattage Range	55-136
Efficiency Range (LPW)	100-124
Reported Life (Hours)	70,000-60,000
Input Current Range (Amps)	0.1-1.1

ENVIRONMENTAL

- RoHS compliant
- REACH compliant
- ISO 9001:2015 certified

KEY DATA

Parameter	Value
Lumen Range	5400-16,275
Wattage Range	55-136
Efficiency Range (LPW)	100-124
Reported Life (Hours)	70,000-60,000
Input Current Range (Amps)	0.1-1.1

ENVIRONMENTAL

- RoHS compliant
- REACH compliant
- ISO 9001:2015 certified

KEY DATA

Parameter	Value
Lumen Range	5400-16,275
Wattage Range	55-136
Efficiency Range (LPW)	100-124
Reported Life (Hours)	70,000-60,000
Input Current Range (Amps)	0.1-1.1

ENVIRONMENTAL

- RoHS compliant
- REACH compliant
- ISO 9001:2015 certified

KEY DATA

Parameter	Value
Lumen Range	5400-16,275
Wattage Range	55-136
Efficiency Range (LPW)	100-124
Reported Life (Hours)	70,000-60,000
Input Current Range (Amps)	0.1-1.1

ENVIRONMENTAL

- RoHS compliant
- REACH compliant
- ISO 9001:2015 certified

KEY DATA

Parameter	Value
Lumen Range	5400-16,275
Wattage Range	55-136
Efficiency Range (LPW)	100-124
Reported Life (Hours)	70,000-60,000
Input Current Range (Amps)	0.1-1.1

ENVIRONMENTAL

- RoHS compliant
- REACH compliant
- ISO 9001:2015 certified

KEY DATA

Parameter</

[illegible]

S&S-B SERIES POLES

SQUARE STRAIGHT STEEL

COLOR SSS-B-16-40-A-1-B3-VGT

Job

Pikeview

Type

A

Approvals

BEACON
LIGHTING

APPLICATIONS

- Lighting installations for side and top mounting of luminaires with effective projected area (EPA) not exceeding maximum allowable loading of the specified pole in its installed geographic location.

CONSTRUCTION

- SHAFT:** One-piece straight steel with square cross section, flat sides and minimum 0.238" radius on all corners; Minimum yield of 46,000 psi (ASTM A500, Grade B); Longitudinal weld seam to appear flush with shaft wall; Steel base plate with axial bolt circle slots welded flush to pole shaft having minimum yield of 36,000 psi (ASTM A36).
- BASE COVER:** Two-piece square aluminum base cover included standard.
- POLE CAP:** Pole shaft supplied with removable cover when applicable; Tenon and post-top configurations also available.
- HAND HOLE:** Rectangular 3x5 steel hand hole provided from 2' (38" x 4.38" opening); Mounting provisions for grounding lug located behind galvanized flange.
- ANCHOR BOLTS:** Four galvanized anchor bolts provide grade with minimum yield of 55,000 psi (ASTM F1554).
- Galvanized hardware** with two washers and two nuts per bolt for leveling.
 3/4" x 3" – TAB-S-M38
 1 x 3/4" x 4" – TAB-P-M38

FINISH

- Durable thermoplastic polyester powder coat paint finish with nominal 3.0 mil thickness.
- Primer/paint primer applied over "white metal" steel substrate coating via mechanical shop process.
- Decorative finish available in seven standard colors; Custom colors available; RAL number 7035 (off-white).
- Internal protective coating available.

WAREHOUSE STOCKED POLES

- SSSHO-40X-4-HV-BD, SSSH2S-40X-4-HV-BD-RDC and SSSHSD-50B-4-HV-BD-RDC
- The HV designation in the above catalog numbers is a combination drop form of the Hubbell Outdoor 52 pattern and the Beacon B304-Viper pattern (see page 10 for more information on mounting).

POLE CAP

TENON

BASE COVER

BASE DETAIL

ANCHOR BOLT

Top View: Shows a square pole cap with four circular holes labeled 'Both Square (Hole)' and 'Both Circle (Hole)'. Dimensions include 2 1/2" and 1 1/2".

Side View: Shows a tenon fitting into a base cover. Labels include 'Flat Washer Hex Nut', 'Grand Opening', and 'Level Foundation'.

Base Detail: Shows a cross-section of the base with labels 'Flat Washer Hex Nut', 'Base Plate', 'Flat Washer Hex Nut', and 'Back Projection'.

Anchor Bolt: Shows a detailed view of an anchor bolt with labels 'Flat Washer Hex Nut', 'Grand Opening', 'Level Foundation', and 'Engineering of Beating by others'.

ORDERING INFORMATION

ORDERING CODE

SSS-B-16-40-A-1-B3-VGT

Reference page 2 for additional configurations

SSSB	NHS	40	A/B/C	MOUNTING	BLT	UL
------	-----	----	-------	----------	-----	----

SERIES	HEIGHT	SHAFT THICKNESS	MOUNTING	FINISH	OPTIONS
SSSB - Square Straight Steel Pole Section	Referencing page 2 Ordering matrix	Referencing page 2 Ordering matrix	1 Single arm mount 2L Two lanterns at 180° 2LT Two lanterns at 90° 3T Three lanterns at 90° 4 Four lanterns at 90° TL Tower (2'38" OD) X 4" Tall TR Tower (2'68" OD) XT 4" Tall TT Tower (5'0" OD) K 4" Tall TRK Tower with Tenon (2'37.5 x 4.2) OT Open Top (includes no cap)	BLT Black Matte Textured BLR Black Matte Textured DBT Dark Bronze Gloss Finish DRG Dark Bronze Gloss Finish GTO Graphite Matte Textured LGH Light Gray Gloss Finish PSF Platinum Silver Shimmer WHT White Matte Textured WWS White Gloss Finish Color Option CC Custom Color	HSC Internal Cabling (NEMA 3P) GFY 20 Ang Girth Straps EXC Extracables and Overhead CD01 °1 Coupling CD02 °37° Coupling CD03 °2 Coupling NMP Mgt. Lip Nuts VMS 2nd mode vibration damper LAB Laser Anchor Bolts UL UL Certified

MOUNTING ORIENTATION

Note: X denotes handle location.

- Removable luminaire used in conjunction with cap as mounting. Flat canopy oriented perpendicular to face of "T" nutting. Example: SSS-B-40-4-HV-BD-RDC
- Specify rotor location specify angle of rotation.
- WMT incorporates both 2T and 4T with 2T/L as well.

ACCESSORIES - Order Separately

Catalog Number	Description
WM1*	1st mode vibration damper
VMXX	2nd mode vibration damper

GILL PATTERN

- B1 Oxide™ "AM"
- B2 Oxide™ "SPRINGING" Yellow "AM"
- S2 2nd mode "SPRINGING" Viper™ "AM"

Beacon Products • 701 Millennium Drive, Greenville, SC 29607 • Phone: 864-678-1000

Due to our commitment efforts to improve our products, product specifications are subject to change without notice.

© 2010 Beacon Products. All Rights Reserved. For more information visit www.beaconproducts.com. * Printed in USA.

SSS-B-PULLS-EP06

FEBRUARY 21, 2010

SSSB-BEACON

REVISION 001

FRESNO Series	DATE _____ LOCATION _____
BOLLARDS	TYP E B PROJECT Phoenix
	CATALOG # FN-24LU-SK-D8

FRESNO Series

FEATURES

- Two size options available
- Sealed one-piece, clear acrylic lens
- Specular, anodized aluminum optical systems
- 80W and 46w energy-efficient LED systems
- Extruded aluminum square or round housing, with tamper resistant hardware
- Flat top, or optional dome top for round FNDZ

Satisfactory Review / Shop Drawing
☒ APPROVED
☐ APPROVES WITH CHANGES NOTED
☐ REVISOR AND RESUBMIT
☐ REJECT

Revisions are required for design conformity with approved conditions to facilitate drawing revision. It is recommended that all revisions be made on separate sheets. Revisions shall include a description of changes, date, and initials of the person making the change.
DATE RECEIVED: 01/14/2016

RELATED PRODUCTS

Bristol Park **Pavilion Farm**

SPECIFICATIONS

HOUSING

- Extruded aluminum 6061 alloy square or round housing, with tamper resistant hardware; flat top, for round FNDZ
- Single screw access for service and maintenance
- Sealed one-piece, clear acrylic lens;
- Specular, anodized aluminum optical systems
- Concealed, cast aluminum 360 alloy anchor base, four 1/2" x 10" anchor bolts
- Durable Leducraft® TGC thermoset polyester powder coat paint finish assures long life and maintenance-free service

OPTICS

- Available in 5000K, 4000K, 3000K CCT and Monochromatic Amber
- Long Life >60,000 hour L90 rated at 25°C
- Optional continuous dimming to 10%
- Rotatable LED assembly adjustment for ideal placement and aiming of asymmetric light pattern

ELECTRICAL

- Universal voltage 120V-277/560Hz drivers with ±1% tolerance starting temperature rated at -20°F

CERTIFICATIONS


WARRANTY

- 5 year limited warranty
- See HLI Standard Warranty for additional information

Print 14 In. x 22.375 In.
FHFDLXD-SPC

© 2020 Hubbell Outdoor Lighting, a division of Hubbell Lighting, Inc. Specifications subject to change without notice.
700 Millennium Blvd., Greenville, SC 29607 | Tel 864.678.0000 | Website www.hubbelldesign.com

**HUBBELL
Lighting**

	DATE: 5/4/2020		LOCATION:														
	TYPE: B		PROJECT: Pikeview														
	CATALOG #: FN1-24LU-3K-DB																
<h1>FRESNO SERIES</h1> <p>BOLLARDS</p>																	
<h2>ORDERING GUIDE</h2>																	
CATALOG #				Example: FN1-12LU-3K-BLT-CD													
<h3>ORDERING INFORMATION</h3>																	
Finishing FN1 Fresno Square FN2 Fresno Round	24L LED 12L asymmetric, 27W 24L symmetric, 49W*	Voltage U 100V-277V 1 120 2 277 3 240 4 277 5 480 F 347	3K 3000K 4K 4000K 5K 5000K AM Amber 590M*	DB Finish BLT Black Matte Textured BLS Black Gloss Smooth DET Dark Bronze Matte Textured DBS Dark Bronze Gloss Smooth GTS Graphite Matte Textured LES Light Grey Gloss Smooth PLS Platinum Silver Smooth WMT White Matte Textured WSS White Gloss Smooth WST White Green Textured Color Option CO Custom Color	Options¹ CD 0°/0° dimmable 24 24" CAH* 30 30" CAH* 36 36" CAH* DM Dome Top (FN2 only) FR Flared* P00 Button Protectors* ABS Bolls stripped ahead												
<small> Notes: 1. Any or all options may be used together. 2. Standard fixture height is 42"; only one overall height (24") may be selected. 3. Ratings 50' with corresponding heights 1-100, 2-200, 3-240, 4-275, 5-480, 6-343. Button Protectors not available in 480V. * 24 only, 200V </small>																	
<h3>PERFORMANCE DATA</h3>																	
Description Drive Current Distribution	5K (5000K NOMINAL 70 CRI)																
	Lumens	LPW	B	U	G	Lumens	LPW	B	U	G	Lumens	LPW	B	U	G		
FN1	12	Type II	761	28	0	2	0	654	24	0	2	0	635	24	0	2	0
	24	Type V	1580	39	1	2	0	1443	35	1	2	1	1399	34	1	2	0
	12	Type II	1095	41	0	2	0	941	35	0	2	0	914	34	0	2	0
FN2	24	Type V	1555	48	1	2	0	1787	44	1	2	1	1725	42	1	2	0
Description AM (560nm Mono Amber)																	
	Lumens	LPW	B	U	G	Lumens	LPW	B	U	G	Lumens	LPW	B	U	G		
FN1	12	Type II	761	28	0	2	0										
	1580	39	1	2	0												
FN2	1095	41	0	2	0												
	1555	48	1	2	0												
<small> Photo: 24 in. 05/27/20 FN1F2LED-SPEC </small>																	
<small> © 2020 Hubbell Outdoor Lighting, a division of Hubbell Lighting, Inc. Specifications subject to change without notice. 700 Millennium Blvd • Greenville, SC 29617 / Tel 864.678.1000 / Website: www.hubbelloutdoor.com </small>																	
