

REMINGTON R.D.

NORTH →

Lot 4 Remington Acres  
Plat # 4548  
512 200 2001  
RR-5

9530 RIFLE TERRACE  
095

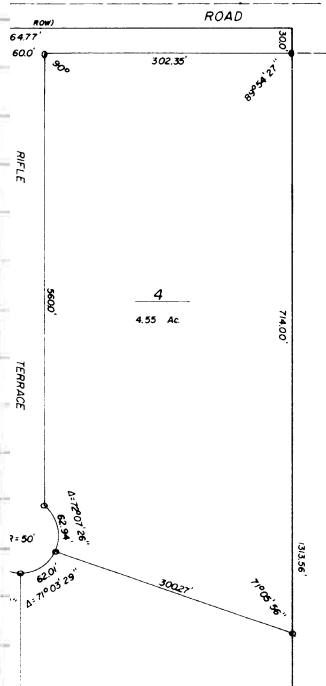
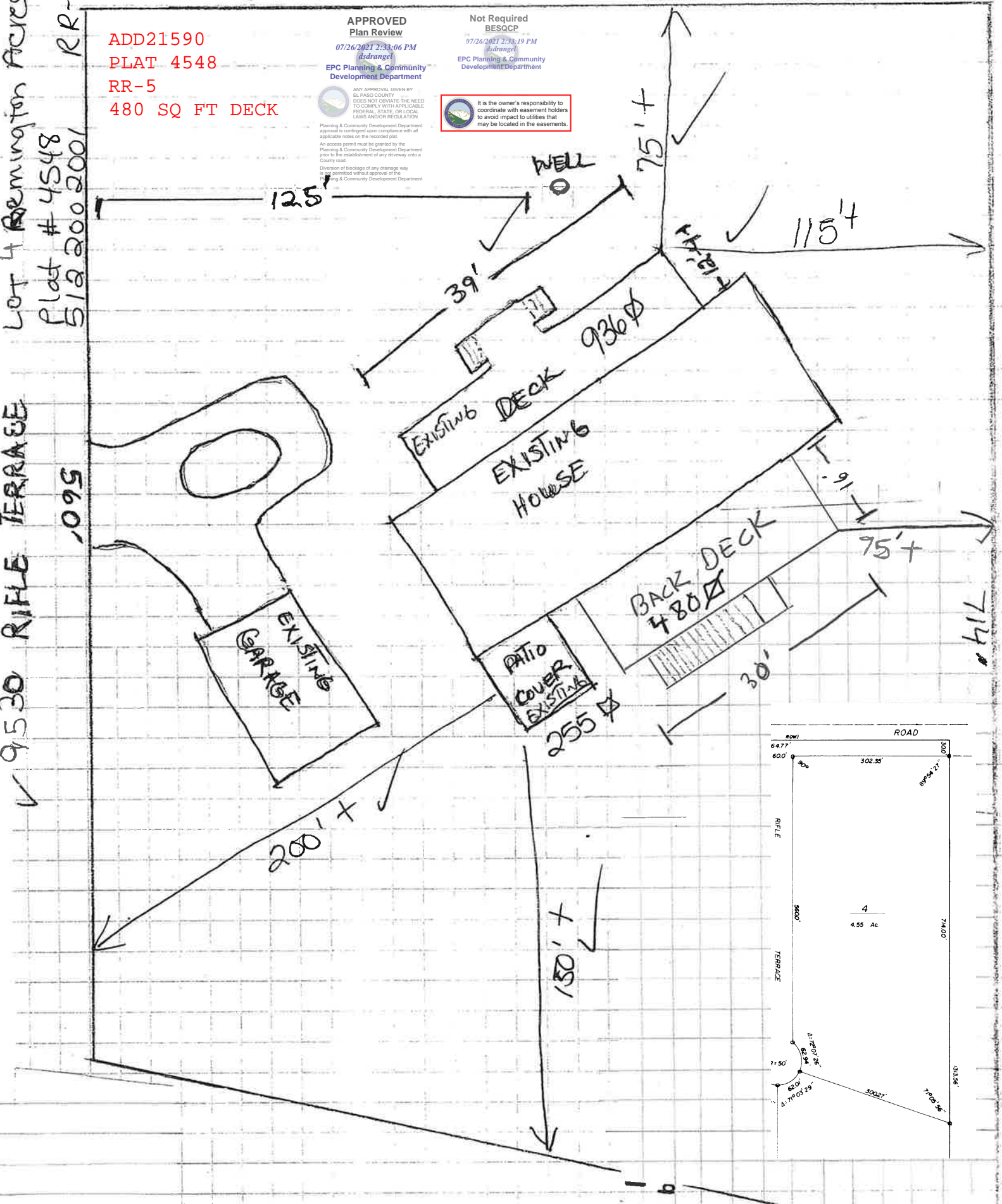
ADD21590  
PLAT 4548  
RR-5  
480 SQ FT DECK

APPROVED  
Plan Review  
07/26/2021 2:33:06 PM  
dsdrangel  
EPC Planning & Community  
Development Department

Not Required  
BESQCP  
07/26/2021 2:33:19 PM  
dsdrangel  
EPC Planning & Community  
Development Department

ANY APPROVAL GIVEN BY EL PASO COUNTY DOES NOT OVIATE THE NEED TO COMPLY WITH APPLICABLE FEDERAL, STATE, OR LOCAL LAWS AND/OR REGULATION. Planning & Community Development Department approval is contingent upon compliance with all applicable rules on the record plat. An access permit must be granted by the Planning & Community Development Department prior to the establishment of any driveway onto a County road. Diversion of blockage of any drainage way is not permitted without approval of the Planning & Community Development Department.

It is the owner's responsibility to coordinate with easement holders to avoid impact to utilities that may be located in the easements.



NOT TO SCALE