

NOTE: ALL EXISTING UNDERGROUND AND ABOVE GROUND UTILITY LOCATIONS, INVERTS AND SIZES ARE APPROXIMATE ONLY AND MUST BE FIELD VERIFIED PRIOR TO CONSTRUCTION. TIE IN POINTS SHALL BE POTHOLED AND LOCATIONS, INVERTS AND SIZES SHALL BE FIELD VERIFIED BY THE CONTRACTOR PRIOR TO CONSTRUCTION.

Standard Notes for El Paso County Grading and Erosion Control Plans

1. Stormwater discharges from construction sites shall not cause or threaten to cause pollution, contamination, or degradation of State Waters. All work and earth disturbance shall be done in a manner that minimizes pollution of any on-site or off-site waters, including wetlands.
2. Notwithstanding anything depicted in these plans in words or graphic representation, all design and construction related to roads, storm drainage and erosion control shall conform to the standards and requirements of the most recent version of the relevant adopted El Paso County standards, including the Land Development Code, the Engineering Criteria Manual, the Drainage Criteria Manual, and the Drainage Criteria Manual Volume 2. Any deviations from regulations and standards must be requested, and approved, in writing.
3. A separate Stormwater Management Plan (SWMP) for this project shall be completed and an Erosion and Stormwater Quality Control Permit (ESQCP) issued prior to commencing construction. Management of the SWMP during construction is the responsibility of the designated Qualified Stormwater Manager or Certified Erosion Control Inspector. The SWMP shall be located on site at all times during construction and shall be kept up to date with work progress and changes in the field.
4. Once the ESQCP is approved and a "Notice to Proceed" has been issued, the contractor may install the initial stage erosion and sediment control measures as indicated on the approved GEC. A Preconstruction Meeting between the contractor, engineer, and El Paso County will be held prior to any construction. It is the responsibility of the applicant to coordinate the meeting time and place with County staff.
5. Control measures must be installed prior to commencement of activities that could contribute pollutants to stormwater. Control measures for all slopes, channels, ditches, and disturbed land areas shall be installed immediately upon completion of the disturbance.
6. All temporary sediment and erosion control measures shall be maintained and remain in effective operating condition until permanent soil erosion control measures are implemented and final stabilization is established. All persons engaged in land disturbance activities shall assess the adequacy of control measures at the site and identify if changes to those control measures are needed to ensure the continued effective performance of the control measures. All changes to temporary sediment and erosion control measures must be incorporated into the Stormwater Management Plan.
7. Temporary stabilization shall be implemented on disturbed areas and stockpiles where ground disturbing construction activity has permanently ceased or temporarily ceased for longer than 14 days.
8. Final stabilization must be implemented at all applicable construction sites. Final stabilization is achieved when all ground disturbing activities are complete and all disturbed areas either have a uniform vegetative cover with individual plant density of 70 percent of pre-disturbance levels established or equivalent permanent alternative stabilization method is implemented. All temporary sediment and erosion control measures shall be removed upon final stabilization and before permit closure.
9. All permanent stormwater management facilities shall be installed as designed in the approved plans. Any proposed changes that affect the design or function of permanent stormwater management structures must be approved by the ECM Administrator prior to implementation.
10. Earth disturbances shall be conducted in such a manner so as to effectively minimize accelerated soil erosion and resulting sedimentation. All disturbances shall be designed, constructed, and completed so that the exposed area of any disturbed land shall be limited to the shortest practical period of time. Pre-existing vegetation shall be protected and maintained within 50 horizontal feet of a waters of the state unless shown to be infeasible and specifically requested and approved.
11. Compaction of soil must be prevented in areas designated for infiltration control measures or where final stabilization will be achieved by vegetative cover. Areas designated for infiltration control measures shall also be protected from sedimentation during construction until final stabilization is achieved. If compaction prevention is not feasible due to site constraints, all areas designated for infiltration and vegetation control measures must be loosened prior to installation of the control measure(s).
12. Any temporary or permanent facility designed and constructed for the conveyance of stormwater around, through, or from the earth disturbance area shall be a stabilized conveyance designed to minimize erosion and the discharge of sediment off site.
13. Concrete wash water shall be contained and disposed of in accordance with the SWMP. No wash water shall be discharged to or allowed to enter State Waters, including any surface or subsurface storm drainage system or facilities. Concrete washouts shall not be located in an area where shallow groundwater may be present, or within 50 feet of a surface water body, creek or stream.
14. During dewatering operations of uncontaminated ground water may be discharged on site, but shall not leave the site in the form of surface runoff unless an approved State dewatering permit is in place.
15. Erosion control blanketing or other protective covering shall be used on slopes steeper than 3:1.
16. Contractor shall be responsible for the removal of all wastes from the construction site for disposal in accordance with local and State regulatory requirements. No construction debris, tree slash, building material wastes or unused building materials shall be buried, dumped, or discharged at the site.
17. Waste materials shall not be temporarily placed or stored in the street, alley, or other public way, unless in accordance with an approved Traffic Control Plan. Control measures may be required by El Paso County Engineering if deemed necessary, based on specific conditions and circumstances.
18. Tracking of soils and construction debris off-site shall be minimized. Materials tracked off-site shall be cleaned up and properly disposed of immediately.
19. The owner/developer shall be responsible for the removal of all construction debris, dirt, trash, rock, sediment, soil, and sand that may accumulate in roads, storm drains and other drainage conveyance systems and stormwater appurtenances as a result of site development.
20. The quantity of materials stored on the project site shall be limited, as much as practical, to that quantity required to perform the work in an orderly sequence. All materials stored on-site shall be stored in a neat, orderly manner, in their original containers, with original manufacturer's labels.
21. No chemical(s) having the potential to be released in stormwater are to be stored or used onsite unless permission for the use of such chemical(s) is granted in writing by the ECM Administrator. In granting approval for the use of such chemical(s), special conditions and monitoring may be required.
22. Bulk storage of allowed petroleum products or other allowed liquid chemicals in excess of 55 gallons shall require adequate secondary containment protection to contain all spills onsite and to prevent any spilled materials from entering State Waters, any surface or subsurface storm drainage system or other facilities.
23. No person shall cause the impediment of stormwater flow in the curb and gutter or ditch except with approved sediment control measures.
24. Owner/developer and their agents shall comply with the "Colorado Water Quality Control Act" (Title 25, Article 8, CRS), and the "Clean Water Act" (33 USC 1344), in addition to the requirements of the Land Development Code, DCM Volume II and the ECM Appendix I. All appropriate permits must be obtained by the contractor prior to construction (1041, NPDES, Floodplain, 404, fugitive dust, etc.). In the event of conflicts between these requirements and other laws, rules, or regulations of other Federal, State, local, or County agencies, the most restrictive laws, rules, or regulations shall apply.
25. All construction traffic must enter/exit the site only at approved construction access points.
26. Prior to construction the permittee shall verify the location of existing utilities.
27. A water source shall be available on site during earthwork operations and shall be utilized as required to minimize dust from earthwork equipment and wind.
28. The soils report for this site has been prepared by \_\_\_\_\_ N/A \_\_\_\_\_ and shall be considered a part of these plans.
29. At least ten (10) days prior to the anticipated start of construction, for projects that will disturb one (1) acre or more, the owner or operator of construction activity shall submit a permit application for stormwater discharge to the Colorado Department of Public Health and Environment, Water Quality Division. The application contains certification of completion of a stormwater management plan (SWMP), of which this Grading and Erosion Control Plan may be a part. For information or application materials contact:

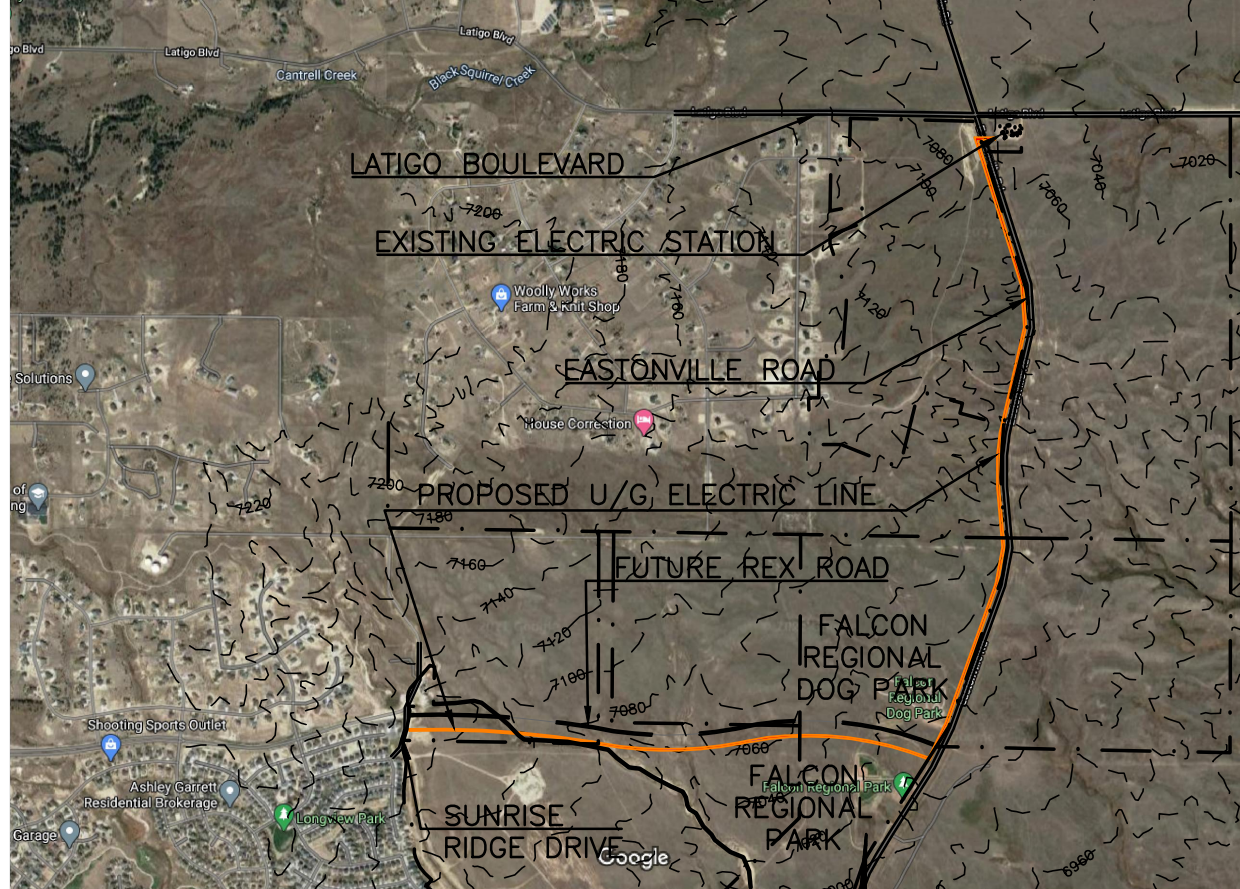
Colorado Department of Public Health and Environment  
Water Quality Control Division  
WQCD -Permits  
4300 Cherry Creek Drive South  
Denver, CO 80246-1530  
Attn: Permits Unit

# MVEA EASTONVILLE 1

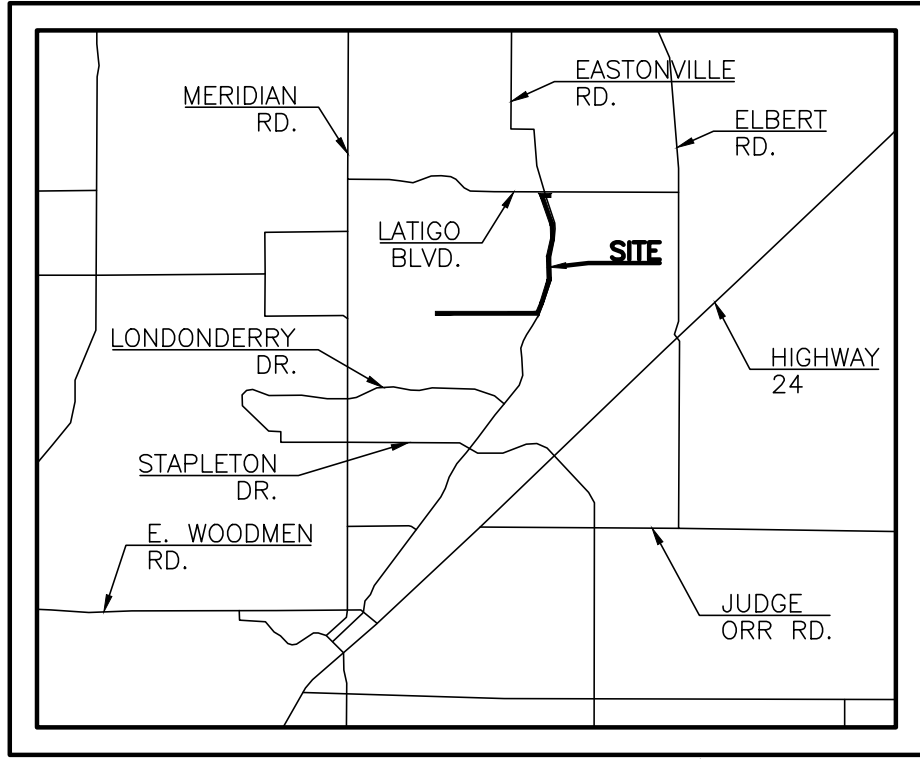
## EL PASO COUNTY, CO

# GRADING, EROSION, & SEDIMENT CONTROL PLAN

## APRIL 2021



SITE MAP  
SCALE: 1"=2,000'



VICINITY MAP  
N.T.S.



### DESCRIPTION OF ACTIVITIES:

THE DEVELOPER PROPOSES TO INSTALL UNDERGROUND ELECTRIC UTILITIES AS WELL AS ASSOCIATED ELECTRIC VAULTS ALONG THE WEST SIDE OF EASTONVILLE ROAD AND THE SOUTH SIDE OF THE FUTURE REX ROAD FOR A TOTAL LENGTH OF APPROXIMATELY 2.5 MILES. THE NEW UTILITY LINES WILL BE INSTALLED BY OPEN CUT EXCAVATION AND DIRECTIONAL BORE. THE SITE CONSISTS OF APPROXIMATELY 6.51 ACRES, HALF OF WHICH IS UNDEVELOPED PRAIRIE AND HALF WHICH HAS BEEN PRE-GRADED FOR THE INSTALLATION OF A FUTURE ROAD, LOCATED IN EL PASO COUNTY.

THE SITE CURRENTLY CONSISTS OF NATIVE GRASSES WITH AN ESTIMATED COVERAGE AREA OF APPROXIMATELY 80% IN THE UNDEVELOPED AREA AND 0% IN THE AREA DESIGNATED FOR THE FUTURE CONSTRUCTION OF REX ROAD. THERE IS AN EXISTING VEHICLE TRACKING PAD AND STABILIZED STAGING AREA APPROXIMATELY 1/2 MILE SOUTH OF THE INTERSECTION OF EASTONVILLE ROAD AND THE FUTURE REX ROAD WHICH WILL BE USED FOR THIS PROJECT. PREVIOUSLY INSTALLED SILT FENCE ALONG THE SOUTHERN PORTION OF EASTONVILLE ROAD AND THE FUTURE REX ROAD WILL KEEP POLLUTANTS FROM TRAVELING OFF SITE IN THOSE AREAS. SEEDING AND MULCHING FOR THE FUTURE REX ROAD AREA WILL BE DONE BY OTHERS.

EROSION CONTROL MEASURES SHALL BE IMPLEMENTED IN A MANNER THAT WILL PROTECT PROPERTIES AND PUBLIC FACILITIES FROM THE ADVERSE EFFECTS OF EROSION AND SEDIMENTATION AS A RESULT OF CONSTRUCTION AND EARTHWORK ACTIVITIES. IT IS ANTICIPATED THAT CONSTRUCTION ACTIVITIES WILL OCCUR BETWEEN SPRING OF 2021 AND SUMMER 2021, AT WHICH POINT IT WILL BE CONSIDERED COMPLETED.

### CONSTRUCTION PHASING IS ANTICIPATED TO OCCUR AS FOLLOWS:

PHASE 1:  
PRIOR TO START OF CONSTRUCTION, INITIAL EROSION CONTROL MEASURES TO BE INSTALLED INCLUDE SEDIMENT CONTROL LOG (SCL) ALONG THE DOWNHILL SIDE OF DISTURBED AREA, ALSO INCLUDED IN THIS PHASE WILL BE INSTALLATION OF SEDIMENT CONTROL LOG (SCL) AROUND THE BASE OF ANY DIRT STOCKPILE AREAS. UNTIL THE STOCKPILE HAS BEEN REMOVED, THE SEDIMENT CONTROL LOG SHALL REMAIN IN PLACE AND BE MAINTAINED IN SUCH A WAY AS TO REDUCE TRANSFERENCE OF SEDIMENTATION OVER THE SITE.

PHASE 2:  
ALL PREVIOUSLY INSTALLED BMP'S SHALL REMAIN IN PLACE UNTIL A LATER PHASE.

PHASE 3:  
ANY AREA THAT IS GOING TO REMAIN IN AN INTERIM STATE FOR MORE THAN 60 DAYS SHALL BE SEEDED IN ORDER TO ESTABLISH A VEGETATIVE COVER UNTIL THE FINAL LANDSCAPING IS INSTALLED. ALL TEMPORARY SOIL EROSION CONTROL MEASURES AND BMP'S SHALL BE MAINTAINED UNTIL PERMANENT SOIL EROSION CONTROL MEASURES ARE IMPLEMENTED AND VEGETATION HAS BEEN ESTABLISHED TO 70% ON AREAS NOT COVERED BY GRAVEL. ONCE VEGETATIVE COVER HAS BEEN ESTABLISHED AT 70% OF THE DISTURBED AREAS, SEDIMENT CONTROL LOG WILL BE REMOVED FROM ANY DIRT STOCKPILE AREAS. THE DIRT STOCKPILES (SP) WILL BE REMOVED AND RE-VEGETATED AS PART OF THIS PHASE.

PHASE 4:  
FINAL CONSTRUCTION ACTIVITIES HAVE BEEN COMPLETED AT THIS POINT. THE PERMANENT EROSION CONTROL MEASURES HAVE BEEN ESTABLISHED.

THE SOILS ON THIS SITE ARE NOTED AS ABOUT 20% COLUMBINE GRAVELLY SANDY LOAM (19), 0% TO 3% SLOPES AND ABOUT 80% STAPLETON SANDY LOAM (83), 3% TO 8% SLOPES. THE COLUMBINE SOIL IS IN HYDROLOGIC SOIL GROUP A AND THE STAPLETON SOIL IS IN HYDROLOGIC SOIL GROUP B. THERE ARE NO WETLANDS ON THIS SITE.

THE SITE CONSISTS OF UNDEVELOPED LAND THAT HAS NATURAL VEGETATIVE COVER OF ABOUT 80% CONSISTING OF NATIVE GRASSES AND PRE-GRADED BARE LAND WITH NO COVER BASED ON A SITE VISIT.

THERE ARE NO POTENTIAL POLLUTANTS EXISTING OR PROPOSED FOR STORAGE ON THIS SITE.

THIS SITE IS NOT WITHIN A DESIGNATED DRAINAGE BASIN. DRAINAGE TYPICALLY FLOWS FROM THE NORTHWEST TOWARDS THE SOUTHEAST ON THIS SITE.

THE PROPERTY OWNER OR OWNERS REPRESENTATIVE IS RESPONSIBLE FOR INSPECTING AND MAINTAINING THE SITE ON A REGULAR BASIS. INITIAL CRITERIA FOR THE OCCURRENCE OF INSPECTIONS IS AS FOLLOWS:  
ONCE EVERY 14 DAYS OR  
AFTER ANY PRECIPITATION OR SNOWMELT EVENT THAT SIGNIFICANT ENOUGH TO CAUSE SURFACE EROSION.  
A WRITTEN RECORD OF INSPECTIONS SHALL BE KEPT BY THE OWNER OR OWNERS REPRESENTATIVE AND MADE AVAILABLE TO THE COUNTY UPON REQUEST. THIS WILL CONTINUE UNTIL THE SITE IS STABILIZED AND THE STOCKPILE IS NO LONGER NEEDED.

### SHEET INDEX

COVER SHEET	1 OF 8
SITE PLAN	2 OF 8
EROSION AND SEDIMENT CONTROL PLAN	3 OF 8
EROSION AND SEDIMENT CONTROL PLAN	4 OF 8
EROSION AND SEDIMENT CONTROL PLAN	5 OF 8
EROSION CONTROL DETAILS	6 OF 8
EROSION CONTROL DETAILS	7 OF 8
EROSION CONTROL DETAILS	8 OF 8

### SITE DATA

OWNER/PETITIONER:  
MOUNTAIN VIEW ELECTRIC ASSOCIATION  
11140 E. WOODMAN RD  
PEYTON, CO 80931  
MR. DAVID WALDNER, (719) 495-2283

PREPARER:  
TERRA NOVA ENGINEERING, INC.  
721 S 23RD STREET  
COLORADO SPRINGS, CO 80904  
(719) 635-6422 OFFICE  
(719) 499-2255 MOBILE

### AREA

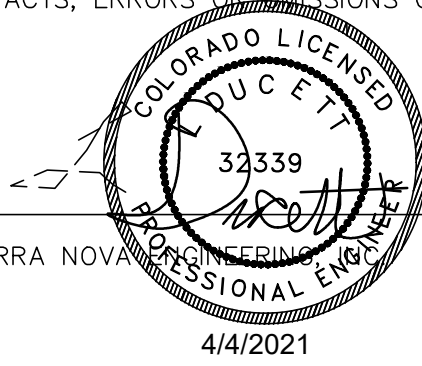
TOTAL AREA TO BE CLEARED, EXCAVATED, GRADED OR DISTURBED IS 6.51± ACRES.

### VOLUME

EARTHWORK VOLUMES: N/A

### ENGINEER'S STATEMENT

THIS GRADING AND EROSION CONTROL PLAN WAS PREPARED UNDER MY DIRECTION AND SUPERVISION AND IS CORRECT TO THE BEST OF MY KNOWLEDGE AND BELIEF. SAID PLAN HAS BEEN PREPARED ACCORDING TO THE CRITERIA ESTABLISHED BY THE COUNTY FOR GRADING AND EROSION CONTROL PLANS. I ACCEPT RESPONSIBILITY FOR ANY LIABILITY CAUSED BY ANY NEGLIGENT ACTS, ERRORS OR OMISSIONS ON MY PART IN PREPARING THIS REPORT.



L. DUCETT, P.E. #32339  
FOR AND ON BEHALF OF TERRA NOVA ENGINEERING, INC.

4/4/2021

### OWNER'S STATEMENT

I, THE OWNER/DEVELOPER HAVE READ AND WILL COMPLY WITH THE REQUIREMENTS OF THE GRADING AND EROSION CONTROL PLAN.

OWNER NAME: Garet Bohuslawsky DATE: 4/8/2021

### EL PASO COUNTY APPROVAL

COUNTY PLAN REVIEW IS PROVIDED ONLY FOR GENERAL CONFORMANCE WITH COUNTY DESIGN CRITERIA. THE COUNTY IS NOT RESPONSIBLE FOR THE ACCURACY AND ADEQUACY OF THE DESIGN, DIMENSIONS, AND/OR ELEVATIONS WHICH SHALL BE CONFIRMED AT THE JOB SITE. THE COUNTY THROUGH THE APPROVAL OF THIS DOCUMENT ASSUMES NO RESPONSIBILITY FOR COMPLETENESS AND/OR ACCURACY OF THIS DOCUMENT.

FILED IN ACCORDANCE WITH THE REQUIREMENTS OF THE EL PASO COUNTY LAND DEVELOPMENT CODE, DRAINAGE CRITERIA MANUAL VOLUMES 1 AND 2, AND ENGINEERING CRITERIA MANUAL AS AMENDED.

IN ACCORDANCE WITH ECM SECTION 1.12, THESE CONSTRUCTION DOCUMENTS WILL BE VALID FOR CONSTRUCTION FOR A PERIOD OF 2 YEARS FROM THE DATE SIGNED BY THE EL PASO COUNTY ENGINEER. IF CONSTRUCTION HAS NOT STARTED WITHIN THOSE 2 YEARS, THE PLANS WILL NEED TO BE RESUBMITTED FOR APPROVAL, INCLUDING PAYMENT OF REVIEW FEES AT THE PLANNING AND COMMUNITY DEVELOPMENT DIRECTORS DISCRETION.

JENNIFER IRVINE, P.E.  
COUNTY ENGINEER / ECM ADMINISTRATOR

DATE \_\_\_\_\_

MVEA EASTONVILLE 1

GRADING, EROSION, & SEDIMENT CONTROL PLAN  
COVER SHEET

DESIGNED BY JF

DRAWN BY JF

CHECKED BY LD

H-SCALE AS SHOWN

V-SCALE NA

JOB NO. 2111.00

DATE ISSUED 4/4/21

SHEET NO. 1 OF 8

COUNTY ESQCP #DOT2021-03