

El Paso Planning & Community Development
2880 International Circle
Colorado Springs, CO 80910

RE: Letter of Intent– MVEA Eastonville 1

Dear Planning and Community Development,

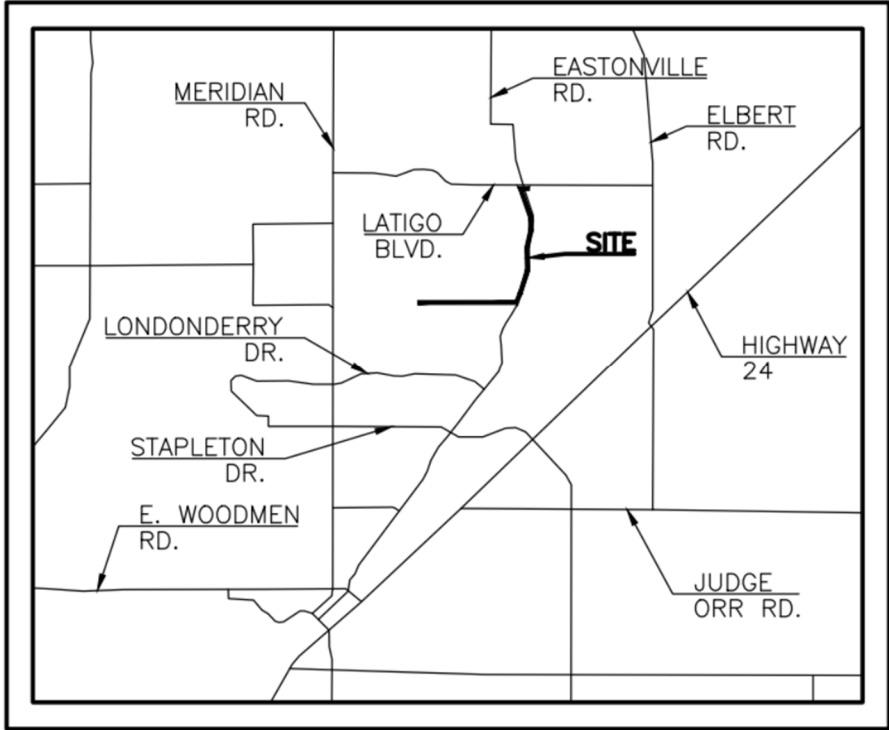
Mountain View Electric Association, Inc (MVEA) will be constructing 12.5 kV underground electrical distribution feeder lines beginning at the electric substation near the intersection of Latigo Blvd and Eastonville Rd. The underground installation will be approximately 2.5 miles long and run south along Eastonville Rd and west along the future Rex Rd before terminating approximately 1 mile west of Eastonville Rd at Sunrise Ridge Dr. The distribution line is in Sections 16, 20 & 21, Township 12 South, Range 64 West of the 6th P.M. Maps are shown below.

Please contact me for project all project related questions.

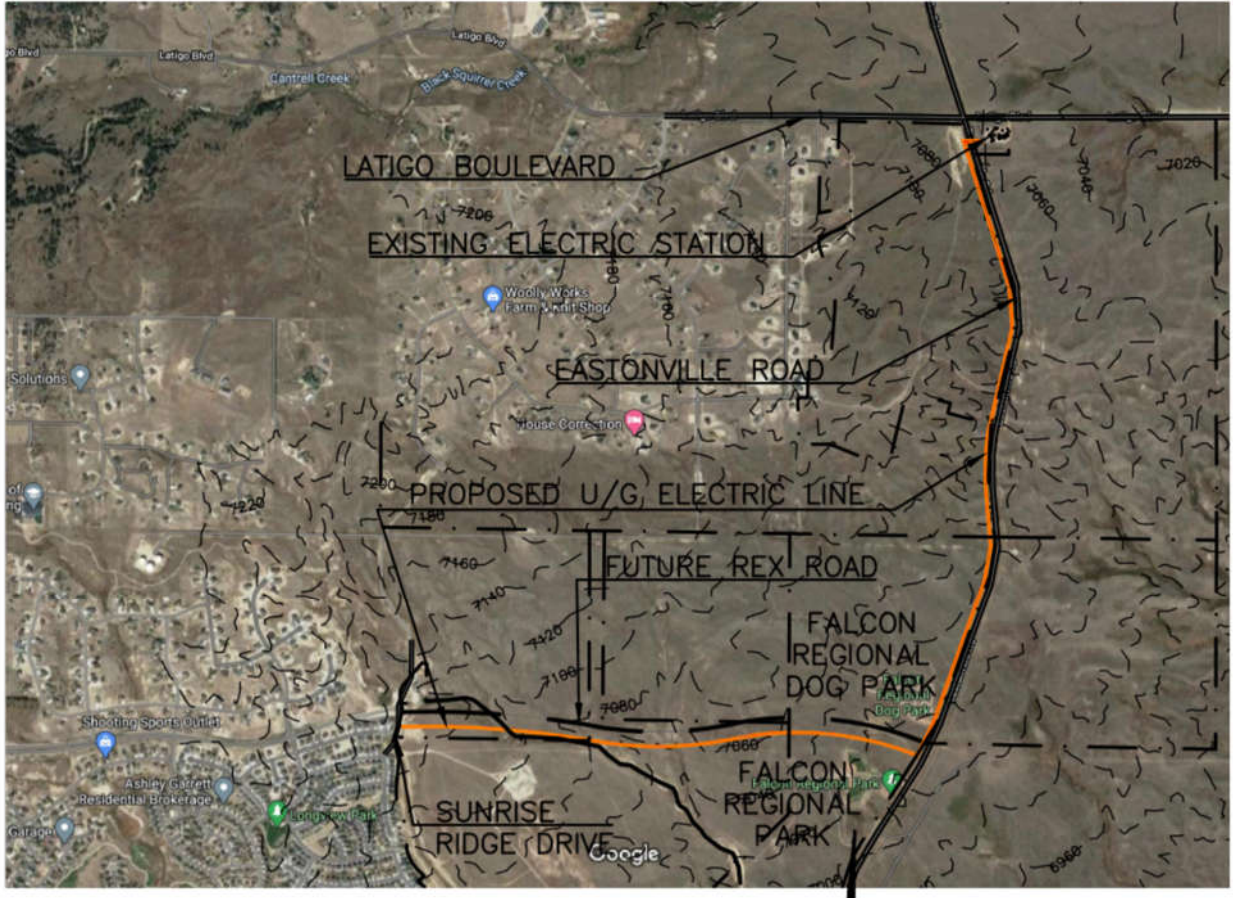
Regards,



Nicole Rietz
MVEA Engineering Coordinator
Direct 719-494-2615
Cell 719-749-8482
Office Hours: Mon – Thur 7:00 am to 5:30 p.m.



OVERVIEW MAP



AERIAL MAP OF NEW UNDERGROUND ELECTRICAL DISTRIBUTION LINES