

**STORM WATER MANAGEMENT PLAN
FOR
MVEA EASTONVILLE 1
EL PASO COUNTY, COLORADO**

March 2021

CDR-21-006

Prepared For:

MOUNTAIN VIEW ELECTRIC
11140 E Woodmen Road
Falcon, CO 80831
(719) 494-2680

Prepared By:

TERRA NOVA ENGINEERING, INC.
721 S. 23rd ST.
Colorado Springs, CO 80904
(719) 635-6422

Job No. 2111.00

CONTACT INFORMATION

SWMP APPLICANT:

Mountain View Electric
11140 E Woodmen Road
Falcon, CO 80931
Garet Bohuslavsky, (719) 494-2680

CONTRACTOR:

Mountain View Electric
11140 E Woodmen Road
Falcon, CO 80931
Garet Bohuslavsky, (719) 494-2680

ENGINEER: Terra Nova Engineering, Inc.

L Ducett, P.E.
721 S. 23rd St.
Colorado Springs, CO 80904
719-635-6422 Office
719-635-6426 Fax
L@tnesinc.com

EROSION CONTROL SUPERVISOR/ SWMP ADMINISTRATOR:

Mountain View Electric
11140 E Woodmen Road
Falcon, CO 80931
Garet Bohuslavsky, (719) 494-2680

SWMP is to be maintained on site in the construction trailer whenever work is occurring. If construction trailer is not available, another alternative must be provided.

COLORADO DISCHARGE PERMIT SYSTEM (CDPS)

TO: Site Inspector Responsible For All CDPS Requirements

The following storm water pollution management plan (SWMP) is a detailed account of the requirements for the CDPS permit. The main objective of this plan is to prevent any contamination of the storm water while construction activity is taking place.

This document must be kept at the construction site at all times and be made available to the public and any representative of the Colorado Department of Health – Water Quality Control Division, if requested.

Enclosed are temporary erosion control details for the construction site and storm sewer outfall points (Detail A). The operation and maintenance inspection record should be used as a guideline for the inspection of permanent and temporary control devices. Items to be inspected are not limited to those listed. The inspections should be made at regular intervals and before and after storm events. The inspection records must be signed and kept in this binder for no less than three (3) years.

STORM WATER MANAGEMENT PLAN FOR MVEA EASTONVILLE 1

TABLE OF CONTENTS

Site Description & Existing Conditions	Page 5
Construction Activity and Storage	Page 6
Best Management Practices and other Controls	Page 6-7
Potential Sources of Pollution	Page 7
Implementation of Control Measures	Page 7
Materials Handling	Page 7-8
Waste Management and Disposal	Page 8
Spill Prevention and Control Plan	Page 8
Spill Prevention Best Management Practices	Page 8-9
Spill Containment Methods	Page 9-10
Spill Countermeasures	Page 11
Maintenance, Inspection and Repair	Page 12
Final Stabilization and Long-term Stormwater Management	Page 13
State Requirements That Are Not Applicable	Page 13

APPENDIX

GENERAL LOCATION MAP
CONSTRUCTION SCHEDULE AND SEQUENCE
GENERAL PERMIT APPLICATION
OPERATION AND MAINTENANCE INSPECTION RECORD
EROSION CONTROL PLAN & DETAILS

STORM WATER MANAGEMENT PLAN FOR MVEA EASTONVILLE 1

SITE DESCRIPTION & EXISTING CONDITIONS

This Storm Water Management Plan for MVEA Eastonville 1 is an analysis of an approximately 6.51 acre area running along the west side of Eastonville Road and south side of the future Rex Road which is designated for the installation of underground electric utilities. The underground installation will be approximately 2.5 miles in length and will begin at the electric substation near the intersection of Latigo Boulevard and Eastonville Road. This open cut installation will travel across Eastonville Road and then travel south parallel to Eastonville Road offset a distance of about 60.' This will continue for about 1.25 miles until the installation takes a right turn just south of the future Rex Road. From here it will travel west along the south side of the future Rex Road for the remaining distance until the underground installation ends at Sunrise Ridge Drive. This last length will include four short sections that will be accomplished by directional bore. The area along the future Rex Road has been pre-graded and silt fence has already been installed in appropriate locations for work on the road and this project intends to make use of it. Silt fence has also previously been installed along the southern portion of Eastonville Road that will be used on this project. About ½ mile south of the intersection of the future Rex Road and Eastonville Road, there is a vehicle tracking pad and staging area that will be used for this site which were also set up previous to this project. The second staging area will be the existing electric substation located at the intersection of Latigo Boulevard and Eastonville Road. The area along the northern section of Eastonville Road to be disturbed currently consists of mostly undeveloped land. The rest of the site consists mostly of bare earth that has been pre-graded for the construction of Rex Road.

The site is located within multiple sections in Township 12 South, Range 64 West of the 6th Principal Meridian currently within El Paso, Colorado. This site is not within a designated drainage basin. The area generally drains from the northwest towards the southeast, mainly by sheet flow until it either crosses Eastonville Road through existing culverts or joins an existing drainage channel west of Eastonville Road. In both cases, drainage will continue by channel until it joins Black Squirrel Creek and continues on to Chico Creek and eventually the Arkansas River.

The soils on this site are noted as about 20% Columbine gravelly sandy loam (19) and about 80% Stapleton sandy loam (83). The columbine soils are in hydrologic soil group A and the Stapleton soils are in hydrologic soil group B. Therefore, the site has low to moderate runoff potential. The study area consists of undeveloped land that has natural vegetative cover of about 80% consisting of native grasses and pre-graded bare land with no vegetative cover based on a site visit. The existing topographic slopes for these soils group range from 0% to 8%.

CONSTRUCTION ACTIVITY AND STORAGE

No known toxic materials have been treated, stored, disposed, spilled or leaked onto the construction site. Practices to minimize contact of construction materials, equipment and vehicles within the storm water include installation of sediment control log and sub-contractor cleaning and hauling of excess debris and material upon completion of work. Construction material loading and unloading, and access to such areas occur from gravel staging areas as shown or noted on the plans. Potential pollutants such as adhesives, sediment, porta potty runoff, and oil spills will also be dealt with as required. Soils are not to be tracked offsite and any soils tracked offsite should be swept up.

There will be no on-site mobile fueling. Contractor shall have the Hazardous Material emergency response number posted on the site. No concrete or asphalt batch plants are planned for the construction site. The site will be considered stabilized when all lines have been installed and site vegetation is at 70% established. There will be approximately 6.51 acres of disturbed soil area. There is no cut or fill for this project. No non-stormwater discharges are anticipated at the site. A stream crossing near the intersection of Sunrise Ridge Drive and the future Rex Road will be done by directional bore. A portion of this construction site is within a designated 100-year floodplain. This area is shown on the plans.

BEST MANAGEMENT PRACTICES AND OTHER CONTROLS

Erosion control measures shall be implemented in a manner that will protect properties and public facilities from the adverse effects of erosion and sedimentation as a result of construction and earthwork activities.

Installation of the electric line will begin in Spring of 2021 with completion of the work anticipated to be in Summer of 2021. The 70% established vegetation is estimated to be in Fall of 2021.

Before clearing and grubbing may begin the first level of BMP'S are to be installed. These measures include sediment control log (SCL). The Staging Area (SSA) is also to be setup with appropriate measures to protect downstream (i.e., sediment control log). Eastonville Road will be used for access to the project. This road will be cleared/swept as necessary to remove any significant sediment accumulation and prevent migration of uneven dirt clods/mud.

The Second and Third level of BMP'S are to check all installed BMP's for conformance and adjust appropriately.

Fourth level of BMP'S shall be installed once the previous BMP'S and construction are completed. This level includes any disturbed areas and stockpiles which are not at final grade, but will remain dormant for longer than 30 days to be mulched within 21 days after interim grading. Any area that is going to remain in an interim state for more than 60 days shall also be seeded. All temporary soil erosion control measures and BMP'S shall be maintained until permanent soil erosion control measures are implemented and vegetation has been established to 70% on areas not to be covered with gravel. These temporary BMPS's are to be removed once the 70% of pre-disturbed levels of vegetation has been established.

POTENTIAL SOURCES OF POLLUTION

The potential sources of pollution associated with this development are:

- Disturbed and stored soils
- Vehicle tracking of sediments
- Management of contaminated soils (if exist)
- Loading and unloading operations
- Significant dust or particulate generating processes
- Onsite waste management practices (waste piles, liquid wastes, dumpsters)
- Non-industrial waste sources such as worker trash and portable toilets
- Vehicle/equipment fueling and maintenance

IMPLEMENTATION OF CONTROL MEASURES

BMP design specifications and implementation information can be found in the UDFCD BMP Description Sheets included in the Appendix. This project does not rely on control measures owned or operated by another entity.

MATERIALS HANDLING

All construction materials shall be handled in a manner to minimize the chance of stormwater contamination. Additional info is included in the Spill Prevention and Control Plan section.

WASTE MANAGEMENT AND DISPOSAL

All waste and debris created by construction activities at the site shall be disposed of in compliance with all laws, regulations, and ordinances of the federal, state and local agencies.

SPILL PREVENTION AND CONTROL PLAN

The Site Superintendent will act as the point of contact for any spill that occurs at this jobsite. The Construction Manager will be responsible for implementation of prevention practices, spill containment / cleanup, worker training, reporting and complete documentation in the event of a spill. The Site Superintendent shall immediately notify the Owner, /Construction Manager, State and the Local Fire Department in addition to the legally required Federal, State, and Local reporting channels (including the National Response Center, 800.424.8802) if a reportable quantity is released to the environment.

SPILL PREVENTION BEST MANAGEMENT PRACTICES

This section describes spill prevention methods Best Management Practices (BMP) that will be practiced to eliminate spills before they happen.

Equipment Staging and Maintenance

- Store and maintain equipment in a designated area.

- Keep spill kits readily accessible.
- Check incoming vehicles for leaking oil and fluids.
- Inspect equipment routinely for leaks and spills.
- Repair equipment immediately, if necessary implement a preventative maintenance schedule for equipment and vehicles.

Fueling Area

- Perform fueling in designated fueling area minimum 50' away from federal waters.
- Use secondary containment (drain pan) to catch spills.
- Use proper equipment (pumps, funnels) to transfer fluids.
- Keep spill kits readily accessible.
- Inspect fueling areas routinely for leaks and spills.
- Hazardous Material Storage Areas: Reduce the amount of hazardous materials by substituting non-hazardous or less hazardous materials.

Hazardous Material Storage Areas

- Minimize the quantity of hazardous materials brought onsite.
- Store hazardous materials in a designated area away from drainage points.

Unexpected Contaminated Soil and Water

- Investigate historical site use.
- Perform all excavation activities carefully and only after the Owner/Construction.
- Manager directs any activities.

Toilets

- Portable toilets will be located a minimum of 10 feet from stormwater inlets and 50 feet from state waters They shall be adequately staked and cleaned on a weekly basis. They will be inspected daily

for spills.

SPILL CONTAINMENT METHODS

The following discussion identifies the types of secondary containment that will be used in the event of a spill. Table 1 summarizes the containment methods for each potential source.

- **Equipment Staging and Maintenance Area:** An equipment leak from a fuel tank, equipment seal, or hydraulic line will be contained within a spill containment cell placed beneath all stationary potential leak sources. An undetected leak from parked equipment will be cleaned up using hand shovels and containerized in a 55-gallon steel drum for offsite disposal.
- **Fueling Area:** A small spill during fueling operations will be contained using fuel absorbent pads at the nozzle. The transfer of fuel into portable equipment will be performed using a funnel and/or hand pump and a spill pad used to absorb any incidental spills/drips. Any leaking tanks or drums will have fluids removed and transferred to another tank, drum, or container for the fluids. A spill response kit will be located near the fueling area or on the fuel truck for easy access. The spill response kit will include plastic sheeting, tarps, over pack drums, absorbent litter, and shovels.
- **Hazardous Material Storage Area:** A spill from containers or cans in a hazardous material storage area will be contained within the storage cabinet these materials are kept in.
- **Unexpected Contaminated Soil:** If contaminated soil is encountered during the project, the Owner/Construction Manager will be notified immediately. Small quantities of suspected contaminated soil will be placed on a 6-mil plastic liner and covered with 6-mil plastic. A soil berm or silt fence will be used to contain the stockpile and prevent migration of contaminated liquids in the soil.

Table 1: Spill Prevention and Containment Methods

Potential Spill Source	Containment Method(s)
Equipment staging and maintenance area	Spill containment pad, spill kit, pumps, funnels

Fueling area (site equipment only)	Spill containment pad, spill kit, pumps, funnels
Hazardous material staging area	Spill containment pad, spill kit, pumps, funnels
Unexpected contaminated soil	Plastic liner, plastic cover, soil berm, hay bales, lined super sacks

SPILL COUNTERMEASURES

Every preventative measure shall be taken to keep contaminated or hazardous materials contained. If a release occurs, the following actions shall be taken:

1. **Stop the Spill:** The severity of a spill at the site is anticipated to be minimal as large containers/quantities of Hazardous Materials are not anticipated. The type of spill would occur while dispensing material at the hazardous materials storage facility and would likely be contained in secondary containment. Thus, the use spill kits or other available absorbent materials should stop the spill.

2. **Warn Others:** Notify co-workers and supervisory personnel of the release. Notify emergency responders if appropriate. For site personnel, an alarm system will consist of three one second blasts on an air horn sounded by the person discovering a spill or fire. In the event of any spill, the Superintendent and Project Manager shall be notified if the spill is 5 gallons or more the STATE will be contacted along with the Fire Department.

3. **Isolate the Area:** Prevent public access to the area and continue to minimize the spread of the material. Minimize personal exposure throughout emergency response actions.

4. **Containment:** A spill shall only be contained by trained personnel and if it is safe to do so. DO NOT

PLACE YOURSELF IN DANGER. Attempt to extinguish a fire only if it is in the incipient stage; trash can size or smaller. For larger spills, wait for the arrival of emergency response personnel and provide directions to the location of the emergency.

5. Complete a Spill and Incident Report: For each spill of a Hazardous Material a spill and incident report shall be completed and submitted to the Owner/Construction Manager and if applicable to the Engineer and the State of Colorado Department of Public Health and Environment.

MAINTENANCE, INSPECTION AND REPAIR

The owner or his representative shall inspect and monitor all drainage facilities using the enclosed “Monitoring and Maintenance Inspection Record” checklist in the appendix. In order to ensure that all graded surfaces, structures, vegetation, erosion and sediment control measures and other protective devices identified in the erosion control plan are maintained in good and effective condition, an Operation and Maintenance Inspection Monitoring Program will be implemented by the permit holder during the construction phase. A systematic inspection of all the above-mentioned protective devices will be performed by a qualified stormwater manager (who is sufficiently qualified for the required duties per the ECM Appendix 1.5) using the operation and maintenance inspection record form in the appendix every 14 days. Also, post-storm event inspections must be conducted within 24 hours after the end of any precipitation or snowmelt event that causes surface erosion. Provided the timing is appropriate, the post-storm inspections may be used to fulfill the 14-day routine inspection requirement. A more frequent inspection schedule than the minimum inspections described may be necessary to ensure that BMPs continue to operate as needed to comply with the plan. All monitoring records are to be kept with the SWMP for a period of no less than three (3) years. The inspection logs shall be signed by the stormwater inspector. All maintenance of temporary and permanent erosion and sediment control facilities shall be per the details included in this report.

This lot will be considered stabilized when all construction activities have been completed and vegetation has been established to 70% of pre-disturbed levels. Erosion control measures such as sedimentation control log must be removed after final stabilization.

Any major revisions or modification to this Storm Water Management Plan will require a report addendum and erosion control map revision. Minor revisions may be made by the Stormwater Manager by redlining the Storm Water Management Plan or inserting additional pages. The SWMP should be viewed as a “living document” that is continuously being reviewed and modified as a part of the overall process of evaluating and managing stormwater quality issues at the site. The Qualified Stormwater Manager shall amend the SWMP when there is a change in design, construction, operation or maintenance of the site which would require the implementation of new or revised BMPs or if the SWMP proves to be ineffective in achieving the general objectives of controlling pollutants in stormwater discharges associated with construction activity or when BMPs are no longer necessary and are removed.

The onsite SWMP will be located at: _____

FINAL STABILIZATION AND LONGTERM STORMWATER MANAGEMENT

Permanent stabilization measures include seeding, and mulching. These temporary BMPS's are to be removed once the 70% of pre-disturbed levels vegetation has been established.

STATE REQUIREMENTS THAT ARE NOT APPLICABLE

The requirement for a phasing plan is not applicable as only one construction phase is proposed.

The requirement for spill prevention and pollution controls for dedicated batch plants is not applicable as no batch plants are proposed.

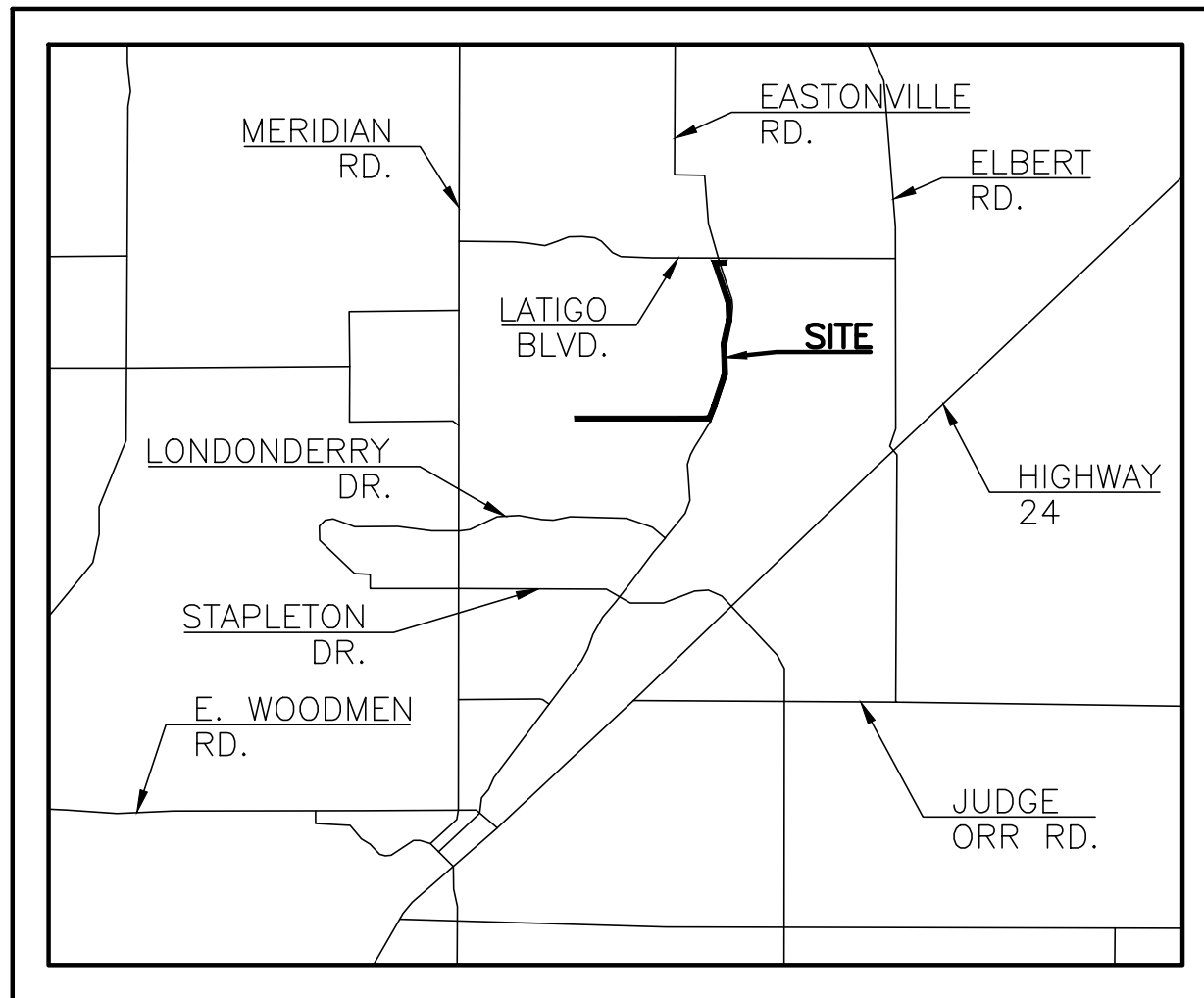
The requirement to show the location of any dedicated asphalt / concrete batch plants is no applicable as no batch plants are proposed.

PREPARED BY:

Terra Nova Engineering, Inc.
L Ducett, P.E.
Project Manager
Jobs/211100/Word/211100 SWMP-RPT.doc

APPENDIX

GENERAL LOCATION MAP



VICINITY MAP
N.T.S.



TEMPORARY EROSION CONTROL DETAILS
(See Sheets 7 & 8 of Grading & Erosion Control Plan)

CONSTRUCTION SCHEDULE AND SEQUENCE

Erosion control measures shall be implemented in a manner that will protect properties and public facilities from the adverse effects of erosion and sedimentation as a result of construction and earthwork activities.

Removal of the overhead electric lines and installation of the underground lines will begin in Spring of 2021 with completion of the work anticipated to be in Summer of 2021. The 70% established vegetation is estimated to be in Fall of 2021.

Before clearing and grubbing may begin the first level of BMP'S are to be installed. These measures include sediment control log (SCL). The Staging Area (SSA) is also to be setup with appropriate measures to protect downstream (i.e., sediment control log). Eastonville Road will be used for access to the project. It will be cleared/swept as necessary to remove any significant sediment accumulation and prevent migration of uneven dirt clods/mud.

The Second & Third level of BMP'S are to check all installed BMP's for conformance and adjust appropriately.

Fourth level of BMP'S shall be installed once the previous BMP'S and construction are completed. This level includes any disturbed areas and stockpiles which are not at final grade, but will remain dormant for longer than 30 days to be mulched within 21 days after interim grading. Any area that is going to remain in an interim state for more than 60 days shall also be seeded. All temporary soil erosion control measures and BMP'S shall be maintained until permanent soil erosion control measures are implemented and vegetation has been established to 70% on areas not to be covered with gravel. These temporary BMPS's are to be removed once the 70% vegetation or permanent landscaping has been established.

GENERAL

PERMIT

APPLICATION

OPERATION AND MAINTENANCE INSPECTION RECORD

The following inspection records are to be used at each bi-monthly stormwater management system inspection and after any precipitation or snowmelt event that causes surface runoff. As a result of these inspections, the SWMP may need to be revised. The inspection records and revised SWMP shall be made available to the division upon request. If the construction activity lasts more than 12 months, a copy of the inspection records and revised SWMP shall be sent to the division by May 1 of each year covering April 1 to March 31.

EROSION CONTROL PLAN

(see back pocket)

OPERATION AND MAINTENANCE INSPECTION RECORD

CONSTRUCTION STORMWATER SITE INSPECTION REPORT

Facility Name		Permittee					
Date of Inspection		Weather Conditions					
Permit Certification #		Disturbed Acreage					
Phase of Construction		Inspector Title					
Inspector Name							
Is the above inspector a qualified stormwater manager? (permittee is responsible for ensuring that the inspector is a qualified stormwater manager)			<table style="width: 100%; border: none;"> <tr> <td style="width: 50%; text-align: center;">YES</td> <td style="width: 50%; text-align: center;">NO</td> </tr> <tr> <td style="text-align: center;"><input type="checkbox"/></td> <td style="text-align: center;"><input type="checkbox"/></td> </tr> </table>	YES	NO	<input type="checkbox"/>	<input type="checkbox"/>
YES	NO						
<input type="checkbox"/>	<input type="checkbox"/>						

INSPECTION FREQUENCY					
Check the box that describes the minimum inspection frequency utilized when conducting each inspection					
At least one inspection every 7 calendar days	<input type="checkbox"/>				
At least one inspection every 14 calendar days, with post-storm event inspections conducted within 24 hours after the end of any precipitation or snowmelt event that causes surface erosions	<input type="checkbox"/>				
<ul style="list-style-type: none"> • This is this a post-storm event inspection. Event Date: _____ 	<input type="checkbox"/>				
Reduced inspection frequency - Include site conditions that warrant reduced inspection frequency	<input type="checkbox"/>				
<ul style="list-style-type: none"> • Post-storm inspections at temporarily idle sites 	<input type="checkbox"/>				
<ul style="list-style-type: none"> • Inspections at completed sites/area 	<input type="checkbox"/>				
<ul style="list-style-type: none"> • Winter conditions exclusion 	<input type="checkbox"/>				
Have there been any deviations from the minimum inspection schedule? If yes, describe below.	<table style="width: 100%; border: none;"> <tr> <td style="width: 50%; text-align: center;">YES</td> <td style="width: 50%; text-align: center;">NO</td> </tr> <tr> <td style="text-align: center;"><input type="checkbox"/></td> <td style="text-align: center;"><input type="checkbox"/></td> </tr> </table>	YES	NO	<input type="checkbox"/>	<input type="checkbox"/>
YES	NO				
<input type="checkbox"/>	<input type="checkbox"/>				

INSPECTION REQUIREMENTS*
i. Visually verify all implemented control measures are in effective operational condition and are working as designed in the specifications
ii. Determine if there are new potential sources of pollutants
iii. Assess the adequacy of control measures at the site to identify areas requiring new or modified control measures to minimize pollutant discharges
iv. Identify all areas of non-compliance with the permit requirements, and if necessary, implement corrective action
*Use the attached Control Measures Requiring Routine Maintenance and Inadequate Control Measures Requiring Corrective Action forms to document results of this assessment that trigger either maintenance or corrective actions

AREAS TO BE INSPECTED			
Is there evidence of, or the potential for, pollutants leaving the construction site boundaries, entering the stormwater drainage system or discharging to state waters at the following locations?			
	NO	YES	If "YES" describe discharge or potential for discharge below. Document related maintenance, inadequate control measures and corrective actions Inadequate Control Measures Requiring Corrective Action form
Construction site perimeter	<input type="checkbox"/>	<input type="checkbox"/>	
All disturbed areas	<input type="checkbox"/>	<input type="checkbox"/>	
Designated haul routes	<input type="checkbox"/>	<input type="checkbox"/>	
Material and waste storage areas exposed to precipitation	<input type="checkbox"/>	<input type="checkbox"/>	
Locations where stormwater has the potential to discharge offsite	<input type="checkbox"/>	<input type="checkbox"/>	
Locations where vehicles exit the site	<input type="checkbox"/>	<input type="checkbox"/>	
Other: _____	<input type="checkbox"/>	<input type="checkbox"/>	

CONTROL MEASURES REQUIRING ROUTINE MAINTENANCE

Definition: Any control measure that is still operating in accordance with its design and the requirements of the permit, but requires maintenance to prevent a breach of the control measure. These items are not subject to the corrective action requirements as specified in Part I.B.1.c of the permit.

Are there control measures requiring maintenance?	NO	YES	
	<input type="checkbox"/>	<input type="checkbox"/>	If "YES" document below

[illegible]

INADEQUATE CONTROL MEASURES REQUIRING CORRECTIVE ACTION

Definition: Any control measure that is not designed or implemented in accordance with the requirements of the permit and/or any control measure that is not implemented to operate in accordance with its design. This includes control measures that have not been implemented for pollutant sources. If it is infeasible to install or repair the control measure immediately after discovering the deficiency the reason must be documented and a schedule included to return the control measure to effective operating condition as possible.

Are there inadequate control measures requiring corrective action?	NO	YES	
	<input type="checkbox"/>	<input type="checkbox"/>	If "YES" document below

Are there additional control measures needed that were not in place at the time of inspection?	NO	YES	
	<input type="checkbox"/>	<input type="checkbox"/>	If "YES" document below

[illegible]

REPORTING REQUIREMENTS

The permittee shall report the following circumstances orally within twenty-four (24) hours from the time the permittee becomes aware of the circumstances, and shall mail to the division a written report containing the information requested within five (5) working days after becoming aware of the following circumstances. The division may waive the written report required if the oral report has been received within 24 hours.

All Noncompliance Requiring 24-Hour Notification per Part II.L.6 of the Permit
a. Endangerment to Health or the Environment Circumstances leading to any noncompliance which may endanger health or the environment regardless of the cause of the incident (See Part II.L.6.a of the Permit) <i>This category would primarily result from the discharge of pollutants in violation of the permit</i>
b. Numeric Effluent Limit Violations <ul style="list-style-type: none">○ Circumstances leading to any unanticipated bypass which exceeds any effluent limitations (See Part II.L.6.b of the Permit)○ Circumstances leading to any upset which causes an exceedance of any effluent limitation (See Part II.L.6.c of the Permit)○ Daily maximum violations (See Part II.L.6.d of the Permit) <i>Numeric effluent limits are very uncommon in certifications under the COR400000 general permit. This category of noncompliance only applies if numeric effluent limits are included in a permit certification.</i>

Has there been an incident of noncompliance requiring 24-hour notification?	NO	YES	
	<input type="checkbox"/>	<input type="checkbox"/>	If "YES" document below

Date and Time of Incident	Location	Description of Noncompliance	Description of Corrective Action	Date and Time of 24 Hour Oral Notification	Date of 5 Day Written Notification *

*Attach copy of 5 day written notification to report. Indicate if written notification was waived, including the name of the division personnel who granted waiver.

After adequate corrective action(s) and maintenance have been taken, or where a report does not identify any incidents requiring corrective action or maintenance, the individual(s) designated as the Qualified Stormwater Manager, shall sign and certify the below statement:

“I verify that, to the best of my knowledge and belief, all corrective action and maintenance items identified during the inspection are complete, and the site is currently in compliance with the permit.”

Name of Qualified Stormwater Manager

Title of Qualified Stormwater Manager

Signature of Qualified Stormwater Manager

Date

Notes/Comments

NOTE: ALL EXISTING UNDERGROUND AND ABOVE GROUND UTILITY LOCATIONS, INVERTS AND SIZES ARE APPROXIMATE ONLY AND MUST BE FIELD VERIFIED PRIOR TO CONSTRUCTION. TIE IN POINTS SHALL BE POTHOLED AND LOCATIONS, INVERTS AND SIZES SHALL BE FIELD VERIFIED BY THE CONTRACTOR PRIOR TO CONSTRUCTION.

Standard Notes for El Paso County Grading and Erosion Control Plans

1. Stormwater discharges from construction sites shall not cause or threaten to cause pollution, contamination, or degradation of State Waters. All work and earth disturbance shall be done in a manner that minimizes pollution of any on-site or off-site waters, including wetlands.
2. Notwithstanding anything depicted in these plans in words or graphic representation, all design and construction related to roads, storm drainage and erosion control shall conform to the standards and requirements of the most recent version of the relevant adopted El Paso County standards, including the Land Development Code, the Engineering Criteria Manual, the Drainage Criteria Manual, and the Drainage Criteria Manual Volume 2. Any deviations from regulations and standards must be requested, and approved, in writing.
3. A separate Stormwater Management Plan (SWMP) for this project shall be completed and an Erosion and Stormwater Quality Control Permit (ESQCP) issued prior to commencing construction. Management of the SWMP during construction is the responsibility of the designated Qualified Stormwater Manager or Certified Erosion Control Inspector. The SWMP shall be located on site at all times during construction and shall be kept up to date with work progress and changes in the field.
4. Once the ESQCP is approved and a "Notice to Proceed" has been issued, the contractor may install the initial stage erosion and sediment control measures as indicated on the approved GEC. A Preconstruction Meeting between the contractor, engineer, and El Paso County will be held prior to any construction. It is the responsibility of the applicant to coordinate the meeting time and place with County staff.
5. Control measures must be installed prior to commencement of activities that could contribute pollutants to stormwater. Control measures for all slopes, channels, ditches, and disturbed land areas shall be installed immediately upon completion of the disturbance.
6. All temporary sediment and erosion control measures shall be maintained and remain in effective operating condition until permanent soil erosion control measures are implemented and final stabilization is established. All persons engaged in land disturbance activities shall assess the adequacy of control measures at the site and identify if changes to those control measures are needed to ensure the continued effective performance of the control measures. All changes to temporary sediment and erosion control measures must be incorporated into the Stormwater Management Plan.
7. Temporary stabilization shall be implemented on disturbed areas and stockpiles where ground disturbing construction activity has permanently ceased or temporarily ceased for longer than 14 days.
8. Final stabilization must be implemented at all applicable construction sites. Final stabilization is achieved when all ground disturbing activities are complete and all disturbed areas either have a uniform vegetative cover with individual plant density of 70 percent of pre-disturbance levels established or equivalent permanent alternative stabilization method is implemented. All temporary sediment and erosion control measures shall be removed upon final stabilization and before permit closure.
9. All permanent stormwater management facilities shall be installed as designed in the approved plans. Any proposed changes that affect the design or function of permanent stormwater management structures must be approved by the ECM Administrator prior to implementation.
10. Earth disturbances shall be conducted in such a manner so as to effectively minimize accelerated soil erosion and resulting sedimentation. All disturbances shall be designed, constructed, and completed so that the exposed area of any disturbed land shall be limited to the shortest practical period of time. Pre-existing vegetation shall be protected and maintained within 50 horizontal feet of a waters of the state unless shown to be infeasible and specifically requested and approved.
11. Compaction of soil must be prevented in areas designated for infiltration control measures or where final stabilization will be achieved by vegetative cover. Areas designated for infiltration control measures shall also be protected from sedimentation during construction until final stabilization is achieved. If compaction prevention is not feasible due to site constraints, all areas designated for infiltration and vegetation control measures must be loosened prior to installation of the control measure(s).
12. Any temporary or permanent facility designed and constructed for the conveyance of stormwater around, through, or from the earth disturbance area shall be a stabilized conveyance designed to minimize erosion and the discharge of sediment off site.
13. Concrete wash water shall be contained and disposed of in accordance with the SWMP. No wash water shall be discharged to or allowed to enter State Waters, including any surface or subsurface storm drainage system or facilities. Concrete washouts shall not be located in an area where shallow groundwater may be present, or within 50 feet of a surface water body, creek or stream.
14. During dewatering operations of uncontaminated ground water may be discharged on site, but shall not leave the site in the form of surface runoff unless an approved State dewatering permit is in place.
15. Erosion control blanketing or other protective covering shall be used on slopes steeper than 3:1.
16. Contractor shall be responsible for the removal of all wastes from the construction site for disposal in accordance with local and State regulatory requirements. No construction debris, tree slash, building material wastes or unused building materials shall be buried, dumped, or discharged at the site.
17. Waste materials shall not be temporarily placed or stored in the street, alley, or other public way, unless in accordance with an approved Traffic Control Plan. Control measures may be required by El Paso County Engineering if deemed necessary, based on specific conditions and circumstances.
18. Tracking of soils and construction debris off-site shall be minimized. Materials tracked off-site shall be cleaned up and properly disposed of immediately.
19. The owner/developer shall be responsible for the removal of all construction debris, dirt, trash, rock, sediment, soil, and sand that may accumulate in roads, storm drains and other drainage conveyance systems and stormwater appurtenances as a result of site development.
20. The quantity of materials stored on the project site shall be limited, as much as practical, to that quantity required to perform the work in an orderly sequence. All materials stored on-site shall be stored in a neat, orderly manner, in their original containers, with original manufacturer's labels.
21. No chemical(s) having the potential to be released in stormwater are to be stored or used onsite unless permission for the use of such chemical(s) is granted in writing by the ECM Administrator. In granting approval for the use of such chemical(s), special conditions and monitoring may be required.
22. Bulk storage of allowed petroleum products or other allowed liquid chemicals in excess of 55 gallons shall require adequate secondary containment protection to contain all spills onsite and to prevent any spilled materials from entering State Waters, any surface or subsurface storm drainage system or other facilities.
23. No person shall cause the impediment of stormwater flow in the curb and gutter or ditch except with approved sediment control measures.
24. Owner/developer and their agents shall comply with the "Colorado Water Quality Control Act" (Title 25, Article 8, CRS), and the "Clean Water Act" (33 USC 1344), in addition to the requirements of the Land Development Code, DCM Volume II and the ECM Appendix I. All appropriate permits must be obtained by the contractor prior to construction (1041, NPDES, Floodplain, 404, fugitive dust, etc.). In the event of conflicts between these requirements and other laws, rules, or regulations of other Federal, State, local, or County agencies, the most restrictive laws, rules, or regulations shall apply.
25. All construction traffic must enter/exit the site only at approved construction access points.
26. Prior to construction the permittee shall verify the location of existing utilities.
27. A water source shall be available on site during earthwork operations and shall be utilized as required to minimize dust from earthwork equipment and wind.
28. The soils report for this site has been prepared by _____ N/A _____ and shall be considered a part of these plans.
29. At least ten (10) days prior to the anticipated start of construction, for projects that will disturb one (1) acre or more, the owner or operator of construction activity shall submit a permit application for stormwater discharge to the Colorado Department of Public Health and Environment, Water Quality Division. The application contains certification of completion of a stormwater management plan (SWMP), of which this Grading and Erosion Control Plan may be a part. For information or application materials contact:

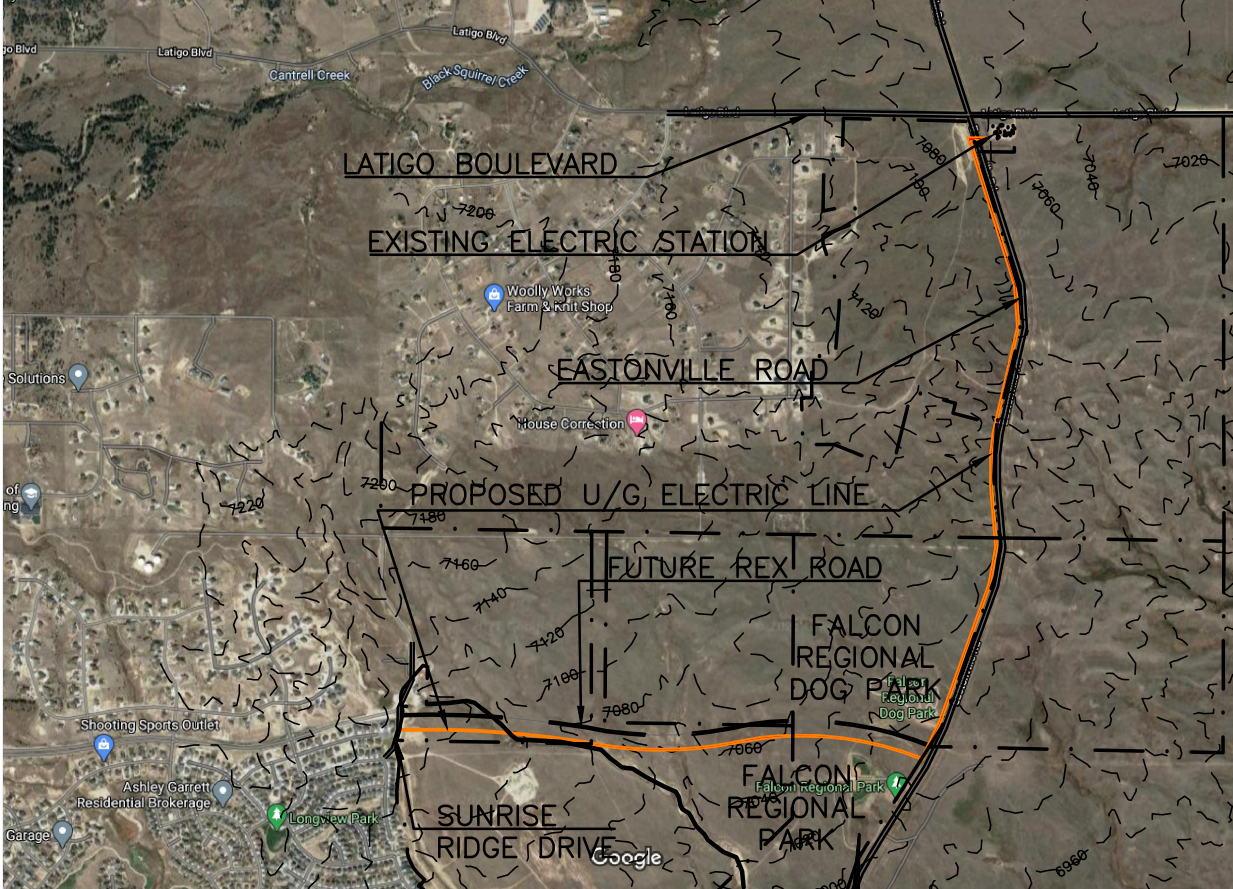
Colorado Department of Public Health and Environment
Water Quality Control Division
WQCD -Permits
4300 Cherry Creek Drive South
Denver, CO 80246-1530
Attn: Permits Unit

MVEA EASTONVILLE 1

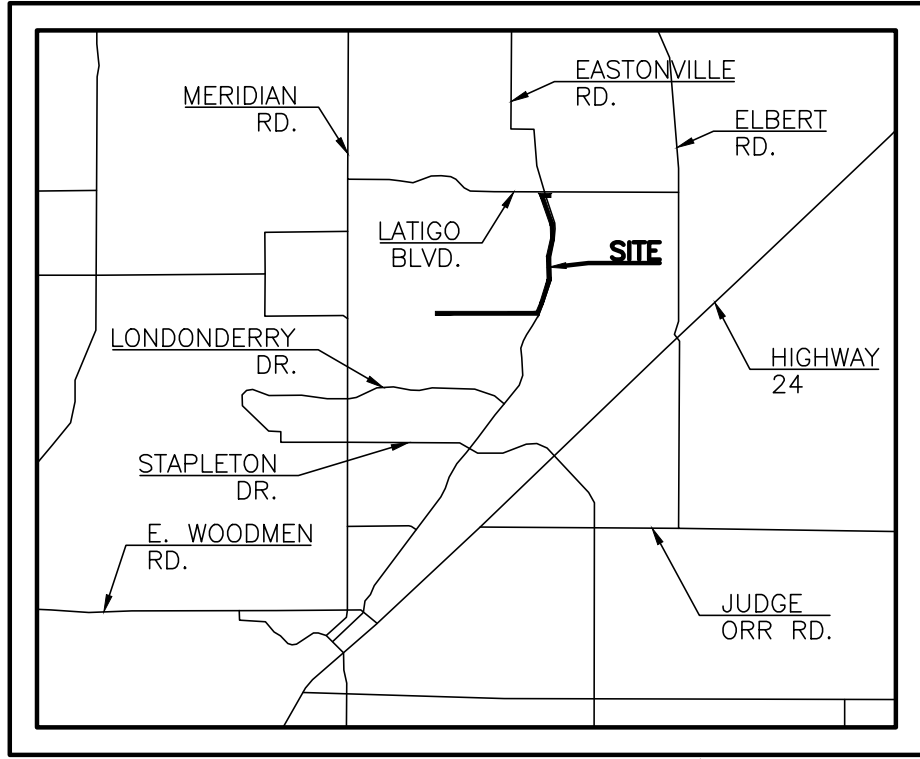
EL PASO COUNTY, CO

GRADING, EROSION, & SEDIMENT CONTROL PLAN

APRIL 2021



SITE MAP
SCALE: 1"=2,000'



VICINITY MAP
N.T.S.

DESCRIPTION OF ACTIVITIES:

THE DEVELOPER PROPOSES TO INSTALL UNDERGROUND ELECTRIC UTILITIES AS WELL AS ASSOCIATED ELECTRIC VAULTS ALONG THE WEST SIDE OF EASTONVILLE ROAD AND THE SOUTH SIDE OF THE FUTURE REX ROAD FOR A TOTAL LENGTH OF APPROXIMATELY 2.5 MILES. THE NEW UTILITY LINES WILL BE INSTALLED BY OPEN CUT EXCAVATION AND DIRECTIONAL BORE. THE SITE CONSISTS OF APPROXIMATELY 6.51 ACRES, HALF OF WHICH IS UNDEVELOPED PRAIRIE AND HALF WHICH HAS BEEN PRE-GRADED FOR THE INSTALLATION OF A FUTURE ROAD, LOCATED IN EL PASO COUNTY.

THE SITE CURRENTLY CONSISTS OF NATIVE GRASSES WITH AN ESTIMATED COVERAGE AREA OF APPROXIMATELY 80% IN THE UNDEVELOPED AREA AND 0% IN THE AREA DESIGNATED FOR THE FUTURE CONSTRUCTION OF REX ROAD. THERE IS AN EXISTING VEHICLE TRACKING PAD AND STABILIZED STAGING AREA APPROXIMATELY 1/2 MILE SOUTH OF THE INTERSECTION OF EASTONVILLE ROAD AND THE FUTURE REX ROAD WHICH WILL BE USED FOR THIS PROJECT. PREVIOUSLY INSTALLED SILT FENCE ALONG THE SOUTHERN PORTION OF EASTONVILLE ROAD AND THE FUTURE REX ROAD WILL KEEP POLLUTANTS FROM TRAVELING OFF SITE IN THOSE AREAS. SEEDING AND MULCHING FOR THE FUTURE REX ROAD AREA WILL BE DONE BY OTHERS.

EROSION CONTROL MEASURES SHALL BE IMPLEMENTED IN A MANNER THAT WILL PROTECT PROPERTIES AND PUBLIC FACILITIES FROM THE ADVERSE EFFECTS OF EROSION AND SEDIMENTATION AS A RESULT OF CONSTRUCTION AND EARTHWORK ACTIVITIES. IT IS ANTICIPATED THAT CONSTRUCTION ACTIVITIES WILL OCCUR BETWEEN SPRING OF 2021 AND SUMMER 2021, AT WHICH POINT IT WILL BE CONSIDERED COMPLETED.

CONSTRUCTION PHASING IS ANTICIPATED TO OCCUR AS FOLLOWS:

PHASE 1:
PRIOR TO START OF CONSTRUCTION, INITIAL EROSION CONTROL MEASURES TO BE INSTALLED INCLUDE SEDIMENT CONTROL LOG (SCL) ALONG THE DOWNHILL SIDE OF DISTURBED AREA, ALSO INCLUDED IN THIS PHASE WILL BE INSTALLATION OF SEDIMENT CONTROL LOG (SCL) AROUND THE BASE OF ANY DIRT STOCKPILE AREAS. UNTIL THE STOCKPILE HAS BEEN REMOVED, THE SEDIMENT CONTROL LOG SHALL REMAIN IN PLACE AND BE MAINTAINED IN SUCH A WAY AS TO REDUCE TRANSFERENCE OF SEDIMENTATION OVER THE SITE.

PHASE 2:
ALL PREVIOUSLY INSTALLED BMP'S SHALL REMAIN IN PLACE UNTIL A LATER PHASE.

PHASE 3:
ANY AREA THAT IS GOING TO REMAIN IN AN INTERIM STATE FOR MORE THAN 60 DAYS SHALL BE SEEDED IN ORDER TO ESTABLISH A VEGETATIVE COVER UNTIL THE FINAL LANDSCAPING IS INSTALLED. ALL TEMPORARY SOIL EROSION CONTROL MEASURES AND BMP'S SHALL BE MAINTAINED UNTIL PERMANENT SOIL EROSION CONTROL MEASURES ARE IMPLEMENTED AND VEGETATION HAS BEEN ESTABLISHED TO 70% ON AREAS NOT COVERED BY GRAVEL. ONCE VEGETATIVE COVER HAS BEEN ESTABLISHED AT 70% OF THE DISTURBED AREAS, SEDIMENT CONTROL LOG WILL BE REMOVED FROM ANY DIRT STOCKPILE AREAS. THE DIRT STOCKPILES (SP) WILL BE REMOVED AND RE-VEGETATED AS PART OF THIS PHASE.

PHASE 4:
FINAL CONSTRUCTION ACTIVITIES HAVE BEEN COMPLETED AT THIS POINT. THE PERMANENT EROSION CONTROL MEASURES HAVE BEEN ESTABLISHED.

THE SOILS ON THIS SITE ARE NOTED AS ABOUT 20% COLUMBINE GRAVELLY SANDY LOAM (19), 0% TO 3% SLOPES AND ABOUT 80% STAPLETON SANDY LOAM (83), 3% TO 8% SLOPES. THE COLUMBINE SOIL IS IN HYDROLOGIC SOIL GROUP A AND THE STAPLETON SOIL IS IN HYDROLOGIC SOIL GROUP B. THERE ARE NO WETLANDS ON THIS SITE.

THE SITE CONSISTS OF UNDEVELOPED LAND THAT HAS NATURAL VEGETATIVE COVER OF ABOUT 80% CONSISTING OF NATIVE GRASSES AND PRE-GRADED BARE LAND WITH NO COVER BASED ON A SITE VISIT.

THERE ARE NO POTENTIAL POLLUTANTS EXISTING OR PROPOSED FOR STORAGE ON THIS SITE.

THIS SITE IS NOT WITHIN A DESIGNATED DRAINAGE BASIN. DRAINAGE TYPICALLY FLOWS FROM THE NORTHWEST TOWARDS THE SOUTHEAST ON THIS SITE.

THE PROPERTY OWNER OR OWNERS REPRESENTATIVE IS RESPONSIBLE FOR INSPECTING AND MAINTAINING THE SITE ON A REGULAR BASIS. INITIAL CRITERIA FOR THE OCCURRENCE OF INSPECTIONS IS AS FOLLOWS:
ONCE EVERY 14 DAYS OR
AFTER ANY PRECIPITATION OR SNOWMELT EVENT THAT SIGNIFICANT ENOUGH TO CAUSE SURFACE EROSION.
A WRITTEN RECORD OF INSPECTIONS SHALL BE KEPT BY THE OWNER OR OWNERS REPRESENTATIVE AND MADE AVAILABLE TO THE COUNTY UPON REQUEST. THIS WILL CONTINUE UNTIL THE SITE IS STABILIZED AND THE STOCKPILE IS NO LONGER NEEDED.

SHEET INDEX

COVER SHEET	1 OF 8
SITE PLAN	2 OF 8
EROSION AND SEDIMENT CONTROL PLAN	3 OF 8
EROSION AND SEDIMENT CONTROL PLAN	4 OF 8
EROSION AND SEDIMENT CONTROL PLAN	5 OF 8
EROSION CONTROL DETAILS	6 OF 8
EROSION CONTROL DETAILS	7 OF 8
EROSION CONTROL DETAILS	8 OF 8

SITE DATA

OWNER/PETITIONER:
MOUNTAIN VIEW ELECTRIC ASSOCIATION
11140 E. WOODMAN RD
PEYTON, CO 80931
MR. DAVID WALDNER, (719) 495-2283

PREPARER:
TERRA NOVA ENGINEERING, INC.
721 S 23RD STREET
COLORADO SPRINGS, CO 80904
(719) 635-6422 OFFICE
(719) 499-2255 MOBILE

AREA

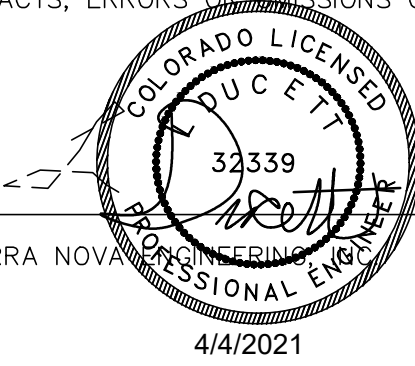
TOTAL AREA TO BE CLEARED, EXCAVATED, GRADED OR DISTURBED IS 6.51± ACRES.

VOLUME

EARTHWORK VOLUMES: N/A

ENGINEER'S STATEMENT

THIS GRADING AND EROSION CONTROL PLAN WAS PREPARED UNDER MY DIRECTION AND SUPERVISION AND IS CORRECT TO THE BEST OF MY KNOWLEDGE AND BELIEF. SAID PLAN HAS BEEN PREPARED ACCORDING TO THE CRITERIA ESTABLISHED BY THE COUNTY FOR GRADING AND EROSION CONTROL PLANS. I ACCEPT RESPONSIBILITY FOR ANY LIABILITY CAUSED BY ANY NEGLIGENT ACTS, ERRORS OR OMISSIONS ON MY PART IN PREPARING THIS REPORT.



L. DUCETT, P.E. #32339
FOR AND ON BEHALF OF TERRA NOVA ENGINEERING, INC.

OWNER'S STATEMENT

I, THE OWNER/DEVELOPER HAVE READ AND WILL COMPLY WITH THE REQUIREMENTS OF THE GRADING AND EROSION CONTROL PLAN.

OWNER NAME: Garet Bohuslawsky DATE: 4/8/2021

EL PASO COUNTY APPROVAL

COUNTY PLAN REVIEW IS PROVIDED ONLY FOR GENERAL CONFORMANCE WITH COUNTY DESIGN CRITERIA. THE COUNTY IS NOT RESPONSIBLE FOR THE ACCURACY AND ADEQUACY OF THE DESIGN, DIMENSIONS, AND/OR ELEVATIONS WHICH SHALL BE CONFIRMED AT THE JOB SITE. THE COUNTY THROUGH THE APPROVAL OF THIS DOCUMENT ASSUMES NO RESPONSIBILITY FOR COMPLETENESS AND/OR ACCURACY OF THIS DOCUMENT.

FILED IN ACCORDANCE WITH THE REQUIREMENTS OF THE EL PASO COUNTY LAND DEVELOPMENT CODE, DRAINAGE CRITERIA MANUAL VOLUMES 1 AND 2, AND ENGINEERING CRITERIA MANUAL AS AMENDED.

IN ACCORDANCE WITH ECM SECTION 1.12, THESE CONSTRUCTION DOCUMENTS WILL BE VALID FOR CONSTRUCTION FOR A PERIOD OF 2 YEARS FROM THE DATE SIGNED BY THE EL PASO COUNTY ENGINEER. IF CONSTRUCTION HAS NOT STARTED WITHIN THOSE 2 YEARS, THE PLANS WILL NEED TO BE RESUBMITTED FOR APPROVAL, INCLUDING PAYMENT OF REVIEW FEES AT THE PLANNING AND COMMUNITY DEVELOPMENT DIRECTORS DISCRETION.

JENNIFER IRVINE, P.E.
COUNTY ENGINEER / ECM ADMINISTRATOR

DATE _____

COUNTY ESQCP #DOT2021-03

REVISIONS	NO.	DESCRIPTION	DATE
UNTIL SUCH TIME AS THESE DRAWINGS ARE APPROVED BY THE ENGINEERING AGENCIES, ANY CHANGES MADE TO THESE DRAWINGS SHALL BE FOR THE PURPOSES DESIGNATED BY WRITTEN AUTHORIZATION.			

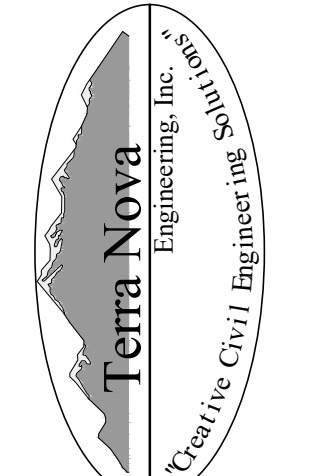
COVER SHEET	1 OF 8
SITE PLAN	2 OF 8
EROSION AND SEDIMENT CONTROL PLAN	3 OF 8
EROSION AND SEDIMENT CONTROL PLAN	4 OF 8
EROSION AND SEDIMENT CONTROL PLAN	5 OF 8
EROSION CONTROL DETAILS	6 OF 8
EROSION CONTROL DETAILS	7 OF 8
EROSION CONTROL DETAILS	8 OF 8

SITE DATA

OWNER/PETITIONER:
MOUNTAIN VIEW ELECTRIC ASSOCIATION
11140 E. WOODMAN RD
PEYTON, CO 80931
MR. DAVID WALDNER, (719) 495-2283

PREPARER:
TERRA NOVA ENGINEERING, INC.
721 S 23RD STREET
COLORADO SPRINGS, CO 80904
(719) 635-6422 OFFICE
(719) 499-2255 MOBILE

PREPARED FOR:
MVEA
ATTN: DAVE WALDNER
11140 E. WOODMAN RD
PEYTON, CO 80831
(719) 495-2283



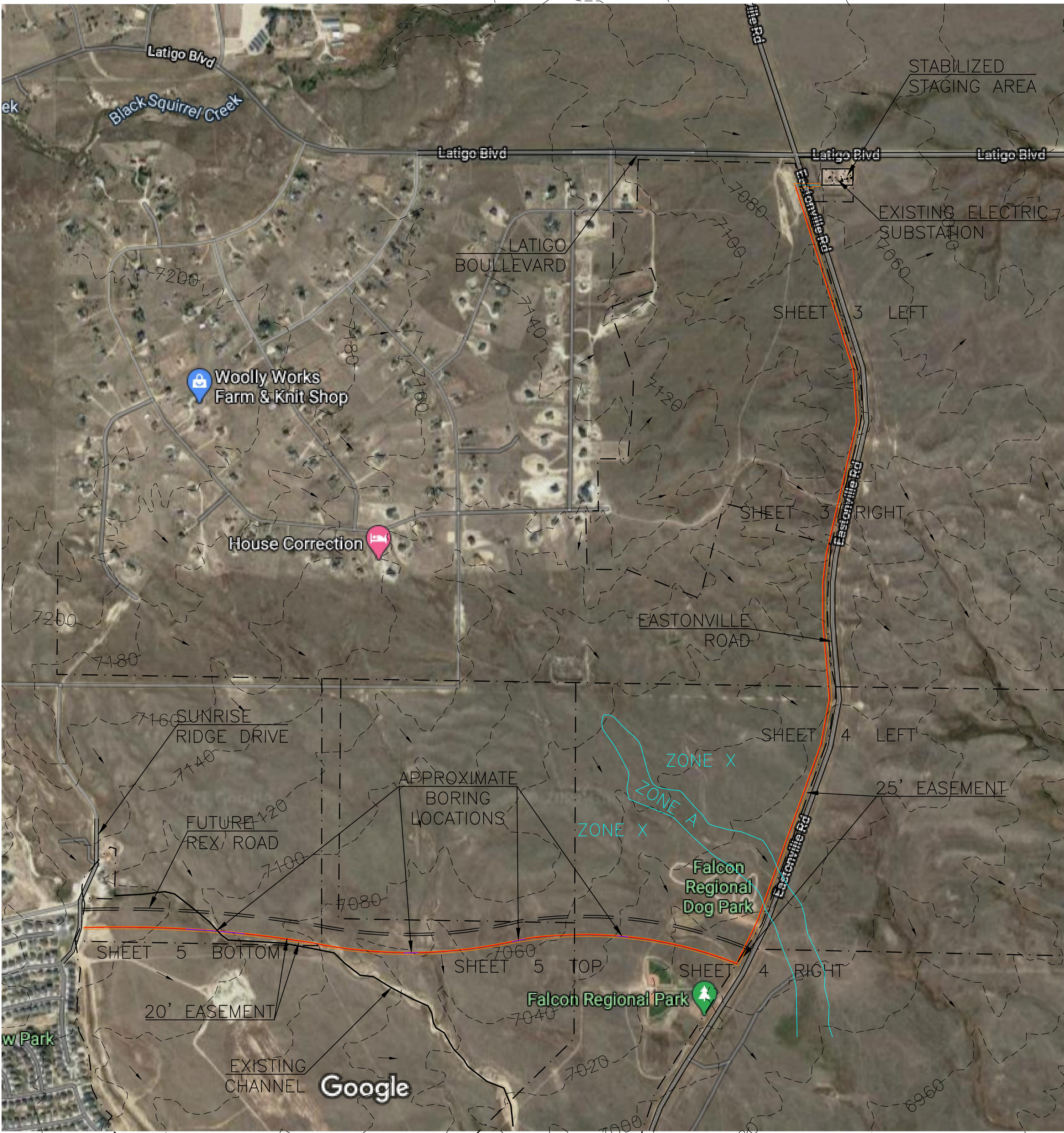
721 S. 23RD STREET
COLORADO SPRINGS, CO 80904
OFFICE: 719-635-6422
FAX: 719-635-6426
www.tnecinc.com

MVEA EASTONVILLE 1

GRADING, EROSION, & SEDIMENT CONTROL PLAN
COVER SHEET

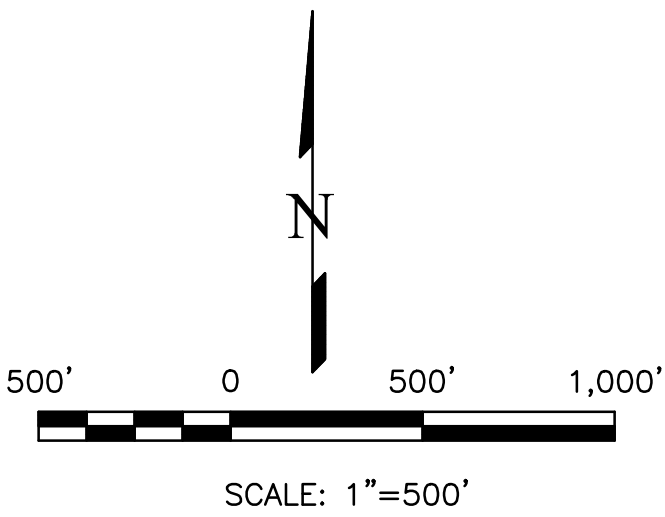
DESIGNED BY	JF
DRAWN BY	JF
CHECKED BY	LD
H-SCALE	AS SHOWN
V-SCALE	NA
JOB NO.	2111.00
DATE ISSUED	4/4/21
SHEET NO.	1 OF 8

MVEA EASTONVILLE 1
EL PASO COUNTY, CO
GRADING, EROSION, & SEDIMENT CONTROL PLAN
APRIL 2021



- LEGEND**
- FUTURE ROAD
 - EXISTING ROAD
 - 7260 — EXISTING 100' CONTOUR
 - 7260 — EXISTING 20' CONTOUR
 - EXISTING FLOW DIRECTION
 - PROPOSED U/G ELECTRIC BY OPEN CUT EXCAVATION
 - PROPOSED U/G ELEC BY DIRECTIONAL BORE (APPROXIMATE LOCATIONS)
 - LIMITS OF DISTURBANCE/CONSTRUCTION SITE BOUNDARY
 - EXISTING PROPERTY LINE

- GRADING PLAN NOTES**
1. PROJECT LOCATION IS IN EL PASO COUNTY COLORADO. APPROXIMATE SITE LOCATION IS AT LATITUDE 39.0120°, LONGITUDE -104.5636°.
 2. ALL MEASUREMENTS ARE IN FEET, UNLESS SPECIFIED OTHERWISE.
 3. FINAL STABILIZATION REQUIREMENTS SHALL BE BASED ON THE REQUIREMENTS OF THE STORM WATER POLLUTION PREVENTION PLAN.
 4. THE CONTRACTOR SHALL VERIFY ALL EXISTING CONDITIONS, UTILITIES AND CULVERTS PRIOR TO CONSTRUCTION. THE CONTRACTOR SHALL INFORM THE ENGINEER OF ANY DISCREPANCIES BETWEEN THE EXISTING CONDITIONS AND THE PLANS.
 5. CONTRACTOR TO PROTECT EXISTING UTILITIES AND MAINTAIN EXISTING DRAINAGE PATTERNS AT ALL TIMES.
 6. CONTRACTOR TO VERIFY RIGHT OF WAY LIMITS PRIOR TO CONSTRUCTION.
 7. EXISTING FEATURES (FENCE, MAILBOX, SIGN, ETC.) THAT ARE DISTURBED AS PART OF THE TEMPORARY IMPROVEMENT SHALL BE REINSTALLED OR REPLACED IN A CONDITION EQUAL TO OR BETTER THAN THE PRECONSTRUCTION CONDITION.
 8. THE CONTRACTOR SHALL BE RESPONSIBLE FOR ALL TRAFFIC CONTROL WHICH INCLUDES THE EL PASO COUNTY "WORK IN THE ROW" PERMIT. TRAFFIC CONTROL SHALL MEET THE REQUIREMENTS OF THE COUNTY AND THE STATE DEPARTMENT OF TRANSPORTATION AND ALL RECOMMENDATIONS IN THE MANUAL ON UNIFORM TRAFFIC CONTROL DEVICES (MUTCD).
 9. CONTRACTOR SHALL CALL 811, ONE CALL ENTITIES PRIOR TO CONSTRUCTION. ALL HAZARDS SHALL BE ASSESSED PRIOR TO CONSTRUCTION.
 10. EXCAVATED SOIL SHALL BE PLACED ON THE UPSTREAM SIDE OF THE TRENCH.
 11. WORK ALONG EASTONVILLE ROAD WILL BE DONE WITHIN A 25' EASEMENT AND WORK ALONG REX ROAD WILL BE DONE WITHIN A 20' EASEMENT GRANTED TO MOUNTAIN VIEW ELECTRIC



THIS DESIGN WAS PREPARED UNDER MY DIRECT SUPERVISION
FOR AND ON BEHALF OF TERRA NOVA ENGINEERING, INC.

L DUCETT, P.E.
COLORADO P.E. NO. 32339
4/4/2021

PROFESSIONAL ENGINEER
32339
L DUCETT

REVISIONS		DATE
NO.	DESCRIPTION	

UNTIL SUCH TIME AS THESE DRAWINGS ARE APPROVED BY THE APPROPRIATE REVIEWING AGENCIES, INCORPORATING ANY COMMENTS, THE USER SHALL NOT BE APPROVED FOR THEIR USE FOR THE PURPOSES DESIGNATED BY WRITTEN AUTHORIZATION.

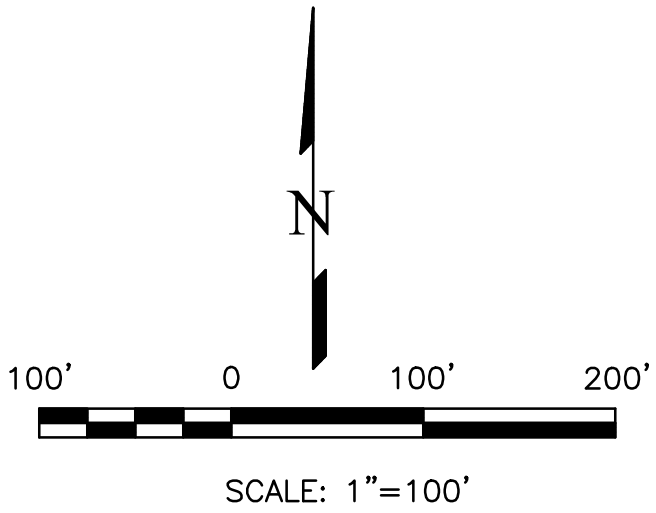
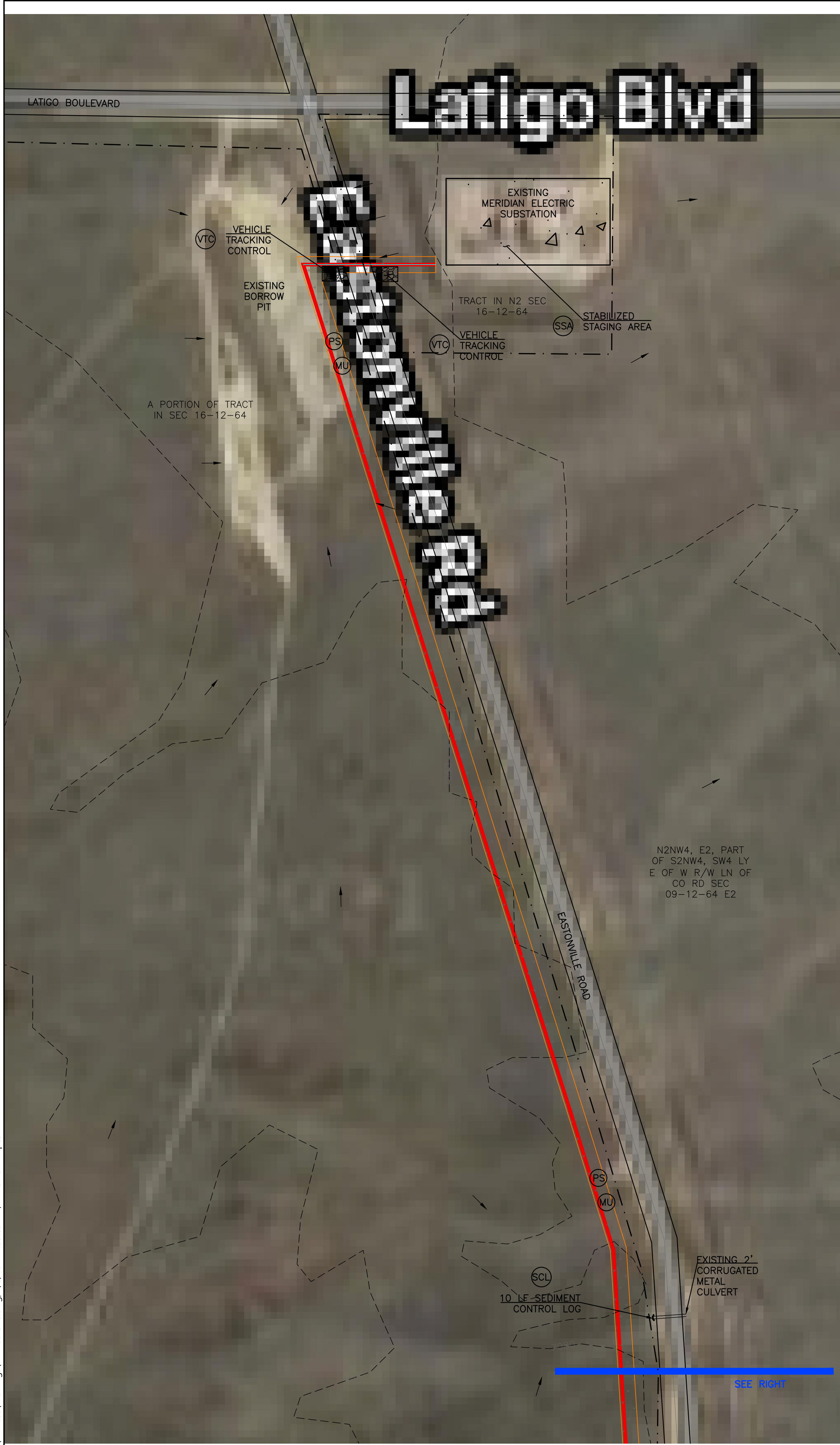
PREPARED FOR:
MVEA
ATTN: DAVE WALDNER
11140 E. WOODMEN RD
PEYTON, CO 80831
(719) 495-2283

Terra Nova
Engineering, Inc.
Peyton, CO 80831
721 S. 23RD STREET
COLORADO SPRINGS, CO 80904
OFFICE: 719-635-6422
FAX: 719-635-6426
www.terra-nova.com

MVEA EASTONVILLE 1
GRADING, EROSION, & SEDIMENT CONTROL PLAN
SITE MAP

DESIGNED BY JF
DRAWN BY JF
CHECKED BY LD
H-SCALE AS SHOWN
V-SCALE NA
JOB NO. 2111.00
DATE ISSUED 4/4/21
SHEET NO. 2 OF 8

N:\jobs\2111100\Drawings\2111100 GEC.dwg, 4/8/2021 4:35:09 PM, DWG To PDF.pc3



EROSION CONTROL LEGEND

KEY	TITLE	SYMBOL
(SCL)	SEDIMENT CONTROL LOG	— SCL —
(PS)(MU)	PERMANENT SEEDING AND MULCHING	
(SSA)	STABILIZED STAGING AREA	
(VTC)	VEHICLE TRACKING CONTROL	

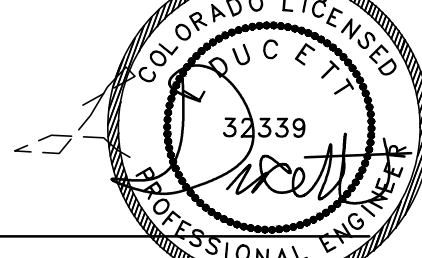
LEGEND

	EXISTING ROAD
	EXISTING 100' CONTOUR
	EXISTING 20' CONTOUR
	EXISTING FLOW DIRECTION
	PROPOSED U/G ELEC BY OPEN CUT EXCAVATION
	PROPOSED U/G ELEC BY DIRECTIONAL BORE
	LIMITS OF DISTURBANCE/ CONSTRUCTION SITE BOUNDARY
	EXISTING PROPERTY LINE

GENERAL NOTES

- CONTRACTOR TO MARK UP PLAN SHOWING ACTUAL FIELD INSTALLATION OF EROSION CONTROL BMPS.
- BROADCAST SEEDING SHALL BE PLACED OVER DISTURBED AREAS ONCE THE CONSTRUCTION IS DONE.
- TOTAL LIMITS OF DISTURBANCE ESTIMATED TO BE APPROXIMATELY 6.51 AC.
- WHEN WORK HAS BEEN COMPLETED, CONTRACTOR SHALL RETURN ANY DISTURBED SECTIONS OF ROADSIDE DITCH ALONG ROADS TO THEIR ORIGINAL GRADES.
- MAX ALLOWABLE EXCAVATED/STOCKPILED SLOPE IS 2:1.
- EASTONVILLE ROAD WILL BE USED FOR ACCESS TO THE PROJECT. THIS ROAD WILL BE CLEARED/SWEPT AS NECESSARY TO REMOVE ANY SIGNIFICANT SEDIMENT ACCUMULATION AND PREVENT MIGRATION OF UNEVEN DIRT CLOUDS/MUD.
- A SECOND STAGING AREA AND VEHICLE TRACKING CONTROL LOCATION WILL BE LOCATED APPROXIMATELY 1/2 MILE TO THE SOUTH OF THE INTERSECTION OF REX ROAD AND EASTONVILLE ROAD, WHICH IS NOT SHOWN ON THE PLANS.
- SEEDING AND MULCHING TO BE DONE BY OTHERS ALONG REX ROAD ONCE THE ROAD IS COMPLETED.
- EXISTING DITCH ALONG EASTONVILLE ROAD LOCATED APPROXIMATELY 5' OFF EDGE OF ROAD.
- EXISTING BARBED WIRE FENCE ALONG EASTONVILLE ROAD LOCATED APPROXIMATELY 10' OFF EDGE OF ROAD.
- WORK ALONG EASTONVILLE ROAD WILL BE DONE WITH A 25' EASEMENT AND WORK ALONG REX ROAD WILL BE DONE WITH A 20' EASEMENT GRANTED TO MOUNTAIN VIEW ELECTRIC.

THIS DESIGN WAS PREPARED UNDER MY DIRECT SUPERVISION
FOR AND ON BEHALF OF TERRA NOVA ENGINEERING, INC.



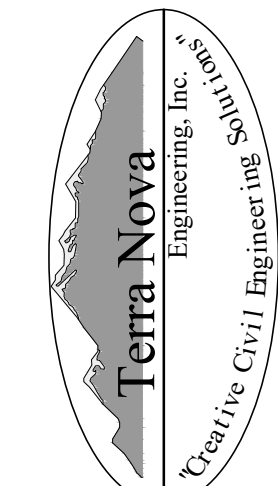
L. DUCETT, P.E.
COLORADO P.E. NO. 32339

4/4/2021

REVISIONS	NO.	DESCRIPTION	DATE

UNTIL SUCH TIME AS THESE
DRAWINGS ARE APPROVED
BY THE APPROPRIATE
REVIEWING AGENCIES,
TERRA NOVA ENGINEERING,
INC. APPROVES THEIR USE
ONLY FOR THE PURPOSES
DESIGNATED BY
WRITTEN AUTHORIZATION.

PREPARED FOR:
MVEA
ATTN: DAVE WALDNER
11140 E. WOODMEN RD
PEYTON, CO 80831
(719) 495-2283



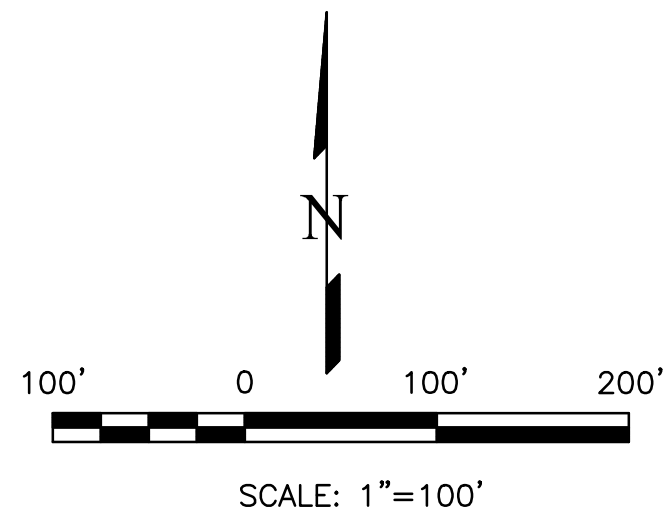
721 S. 23RD STREET
COLORADO SPRINGS, CO 80904
OFFICE: 719-635-6422
FAX: 719-635-6426
www.terra-nova.com

MVEA EASTONVILLE 1

GRADING, EROSION, & SEDIMENT CONTROL PLAN
EROSION CONTROL PLAN

DESIGNED BY LD
DRAWN BY JF
CHECKED BY LD
H-SCALE AS SHOWN
V-SCALE NA
JOB NO. 2111.00
DATE ISSUED 4/4/21
SHEET NO. 3 OF 8

N:\jobs\2111.00\Drawings\211100.GEC.dwg, 4/8/2021 4:35:54 PM, DWG To PDF.pc3



EROSION CONTROL LEGEND

KEY	TITLE	SYMBOL
(SCL)	SEDIMENT CONTROL LOG	— SCL —
(PS) (MU)	PERMANENT SEEDING AND MULCHING	— — —
(SSA)	STABILIZED STAGING AREA	— — —
(VTC)	VEHICLE TRACKING CONTROL	— — —

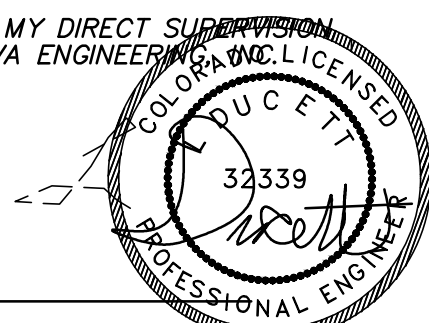
LEGEND

—	EXISTING ROAD
— 100' —	EXISTING 100' CONTOUR
— 20' —	EXISTING 20' CONTOUR
→	EXISTING FLOW DIRECTION
—	PROPOSED U/G ELEC BY OPEN CUT EXCAVATION
—	PROPOSED U/G ELEC BY DIRECTIONAL BORE
—	LIMITS OF DISTURBANCE/CONSTRUCTION SITE BOUNDARY
—	EXISTING PROPERTY LINE
—	EXISTING FEMA FLOODWAY BOUNDARY

GENERAL NOTES

- CONTRACTOR TO MARK UP PLAN SHOWING ACTUAL FIELD INSTALLATION OF EROSION CONTROL BMPs.
- BROADCAST SEEDING SHALL BE PLACED OVER DISTURBED AREAS ONCE THE CONSTRUCTION IS DONE.
- TOTAL LIMITS OF DISTURBANCE ESTIMATED TO BE APPROXIMATELY 6.51 AC.
- WHEN WORK HAS BEEN COMPLETED, CONTRACTOR SHALL RETURN ANY DISTURBED SECTIONS OF ROADSIDE DITCH ALONG ROADS TO THEIR ORIGINAL GRADES.
- MAX ALLOWABLE EXCAVATED/STOCKPILED SLOPE IS 2:1.
- EASTONVILLE ROAD WILL BE USED FOR ACCESS TO THE PROJECT. THIS ROAD WILL BE CLEARED/SWEPT AS NECESSARY TO REMOVE ANY SIGNIFICANT SEDIMENT ACCUMULATION AND PREVENT MIGRATION OF UNEVEN DIRT CLOUDS/MUD.
- A SECOND STAGING AREA AND VEHICLE TRACKING CONTROL LOCATION WILL BE LOCATED APPROXIMATELY 1/4 MILE TO THE SOUTH OF THE INTERSECTION OF REX ROAD AND EASTONVILLE ROAD, WHICH IS NOT SHOWN ON THE PLANS.
- SEEDING AND MULCHING TO BE DONE BY OTHERS ALONG REX ROAD ONCE THE ROAD IS COMPLETED.
- EXISTING DITCH ALONG EASTONVILLE ROAD LOCATED APPROXIMATELY 5' OFF EDGE OF ROAD.
- EXISTING BARBED WIRE FENCE ALONG EASTONVILLE ROAD LOCATED APPROXIMATELY 10' OFF EDGE OF ROAD.
- WORK ALONG EASTONVILLE ROAD WILL BE DONE WITH A 25' EASEMENT AND WORK ALONG REX ROAD WILL BE DONE WITH A 20' EASEMENT GRANTED TO MOUNTAIN VIEW ELECTRIC.

THIS DESIGN WAS PREPARED UNDER MY DIRECT SUPERVISION
FOR AND ON BEHALF OF TERRA NOVA ENGINEERING, INC.

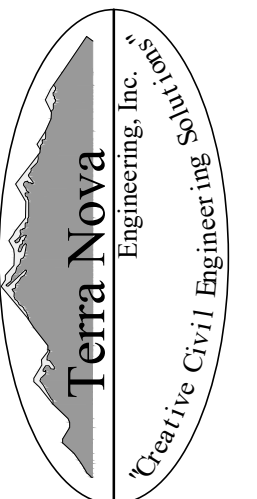


L. DUCETT, P.E.
COLORADO P.E. NO. 32339

4/4/2021

REVISIONS	NO.	DESCRIPTION	DATE
UNTIL SUCH TIME AS THESE DRAWINGS ARE APPROVED BY THE APPROPRIATE REVIEWING AGENCIES, THIS DRAWING IS NOT TO BE USED FOR ANY PURPOSES DESIGNATED BY WRITTEN AUTHORIZATION.			

PREPARED FOR:
MVEA
ATTN: DAVE WALDNER
11140 E. WOODMEN RD
PEYTON, CO 80831
(719) 495-2283

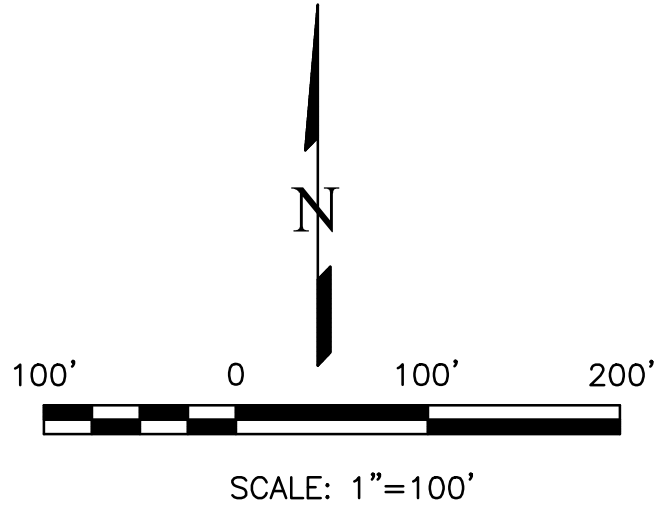
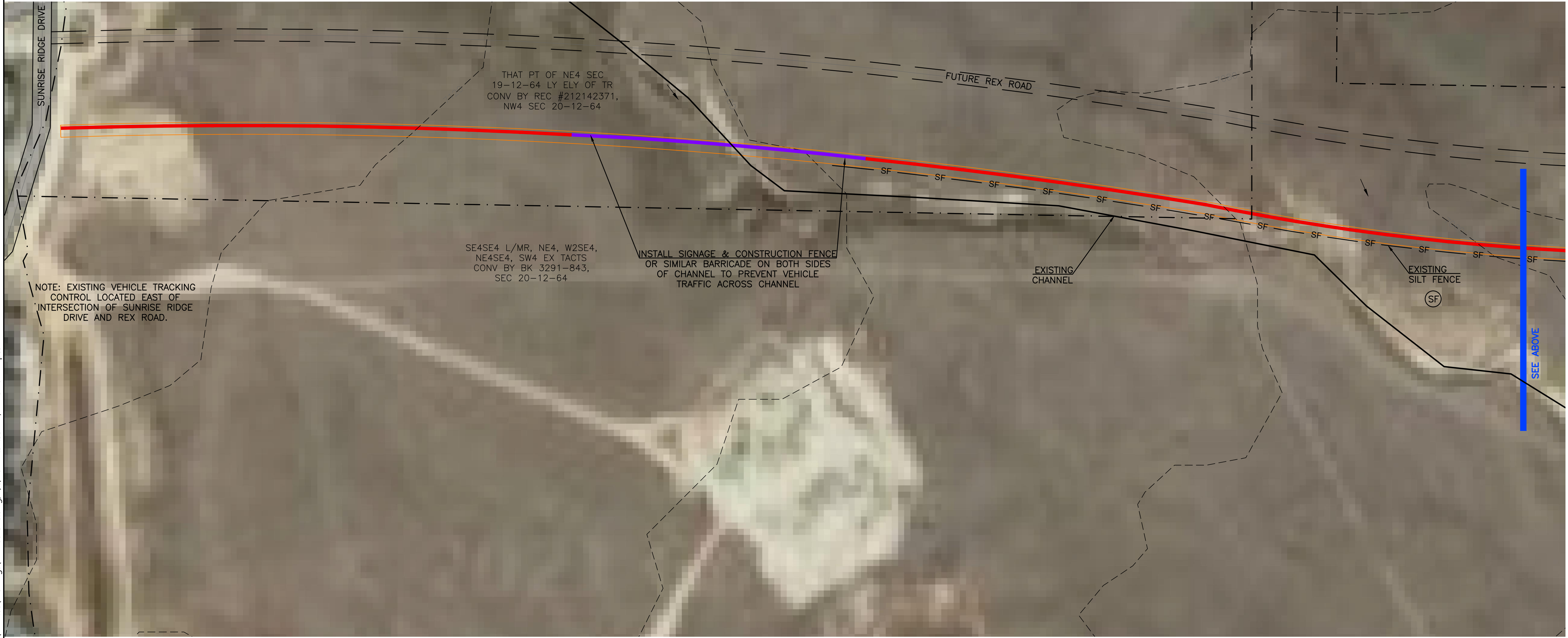


721 S. 23RD STREET
COLORADO SPRINGS, CO 80904
OFFICE: 719-635-6422
FAX: 719-635-6426
www.terra-nova.com

MVEA EASTONVILLE 1

GRADING, EROSION, & SEDIMENT CONTROL PLAN
EROSION CONTROL PLAN

DESIGNED BY LD
DRAWN BY JF
CHECKED BY LD
H-SCALE AS SHOWN
V-SCALE NA
JOB NO. 2111.00
DATE ISSUED 4/4/21
SHEET NO. 4 OF 8



EROSION CONTROL LEGEND

KEY	TITLE	SYMBOL
(SCL)	SEDIMENT CONTROL LOG	— SCL —
(PS)(MU)	PERMANENT SEEDING AND MULCHING	
(SSA)	STABILIZED STAGING AREA	
(VTC)	VEHICLE TRACKING CONTROL	

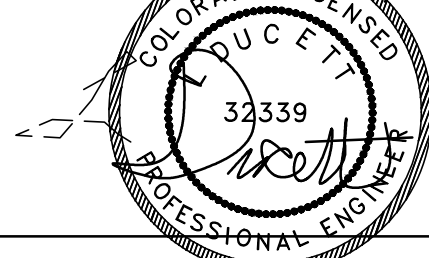
LEGEND

	EXISTING ROAD
	EXISTING 100' CONTOUR
	EXISTING 20' CONTOUR
	EXISTING FLOW DIRECTION
	PROPOSED U/G ELEC BY OPEN CUT EXCAVATION
	PROPOSED U/G ELEC BY DIRECTIONAL BORE
	LIMITS OF DISTURBANCE/ CONSTRUCTION SITE BOUNDARY
	EXISTING PROPERTY LINE

GENERAL NOTES

- CONTRACTOR TO MARK UP PLAN SHOWING ACTUAL FIELD INSTALLATION OF EROSION CONTROL BMPs.
- BROADCAST SEEDING SHALL BE PLACED OVER DISTURBED AREAS ONCE THE CONSTRUCTION IS DONE.
- TOTAL LIMITS OF DISTURBANCE ESTIMATED TO BE APPROXIMATELY 6.51 AC.
- WHEN WORK HAS BEEN COMPLETED, CONTRACTOR SHALL RETURN ANY DISTURBED SECTIONS OF ROADSIDE DITCH ALONG ROADS TO THEIR ORIGINAL GRADES.
- MAX ALLOWABLE EXCAVATED/STOCKPILED SLOPE IS 2:1.
- EASTONVILLE ROAD WILL BE USED FOR ACCESS TO THE PROJECT. THIS ROAD WILL BE CLEARED/SWEPT AS NECESSARY TO REMOVE ANY SIGNIFICANT SEDIMENT ACCUMULATION AND PREVENT MIGRATION OF UNEVEN DIRT CLOUDS/MUD.
- A SECOND STAGING AREA AND VEHICLE TRACKING CONTROL LOCATION WILL BE LOCATED APPROXIMATELY 1/4 MILE TO THE SOUTH OF THE INTERSECTION OF REX ROAD AND EASTONVILLE ROAD, WHICH IS NOT SHOWN ON THE PLANS.
- SEEDING AND MULCHING TO BE DONE BY OTHERS ALONG REX ROAD ONCE THE ROAD IS COMPLETED.
- EXISTING DITCH ALONG EASTONVILLE ROAD LOCATED APPROXIMATELY 5' OFF EDGE OF ROAD.
- EXISTING BARBED WIRE FENCE ALONG EASTONVILLE ROAD LOCATED APPROXIMATELY 10' OFF EDGE OF ROAD.
- WORK ALONG EASTONVILLE ROAD WILL BE DONE WITH A 25' EASEMENT AND WORK ALONG REX ROAD WILL BE DONE WITH A 20' EASEMENT GRANTED TO MOUNTAIN VIEW ELECTRIC.

THIS DESIGN WAS PREPARED UNDER MY DIRECT SUPERVISION
FOR AND ON BEHALF OF TERRA NOVA ENGINEERING, INC.



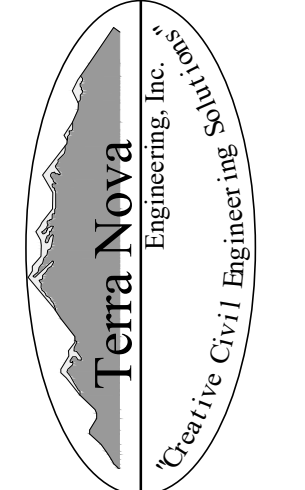
L. DUCETT, P.E.
COLORADO P.E. NO. 32339

4/4/2021

REVISIONS	NO.	DESCRIPTION	DATE

UNTIL SUCH TIME AS THESE
DRAWINGS ARE APPROVED
BY THE APPROPRIATE
REVIEWING AGENCIES,
THESE DRAWINGS ARE NOT
TO BE USED FOR ANY
PURPOSES DESIGNATED BY
THESE AGENCIES WITHOUT
WRITTEN AUTHORIZATION.

PREPARED FOR:
MVEA
ATTN: DAVE WALDNER
11140 E. WOODMEN RD
PEYTON, CO 80831
(719) 495-2283



721 S. 23RD STREET
COLORADO SPRINGS, CO 80904
OFFICE: 719-635-6422
FAX: 719-635-6426
www.tnecinc.com

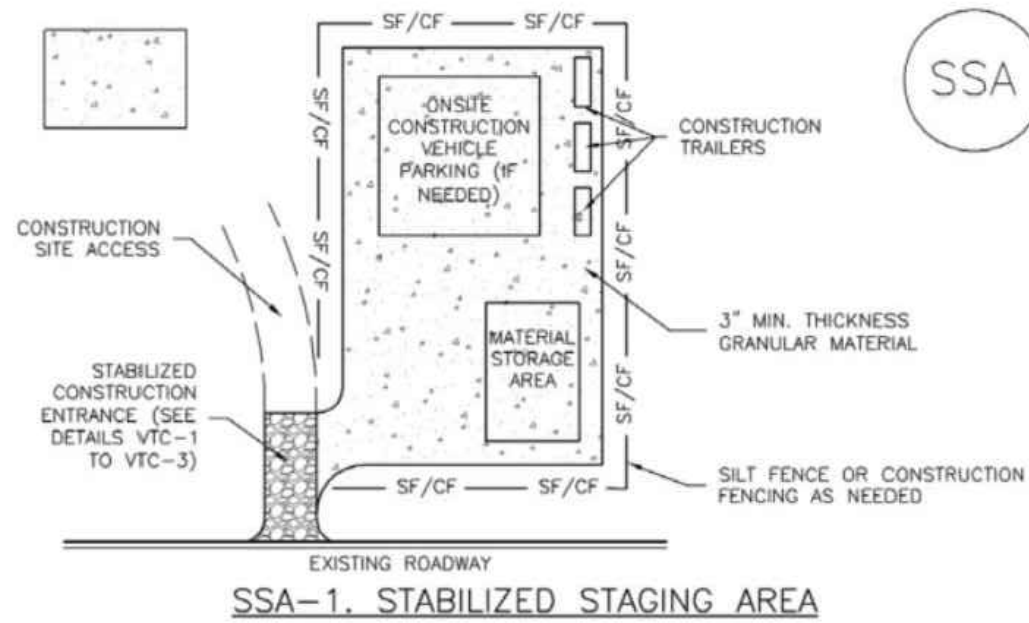
MVEA EASTONVILLE 1

GRADING, EROSION, & SEDIMENT CONTROL PLAN
EROSION CONTROL PLAN

DESIGNED BY LD
DRAWN BY JF
CHECKED BY LD
H-SCALE AS SHOWN
V-SCALE NA
JOB NO. 2111.00
DATE ISSUED 4/4/21
SHEET NO. 5 OF 8

N:\jobs\2111.00\Drawings\211100 GEC.dwg, 4/8/2021 4:38:08 PM, DWG To PDF.pc3

Stabilized Staging Area (SSA) SM-6



SSA-1. STABILIZED STAGING AREA

STABILIZED STAGING AREA INSTALLATION NOTES

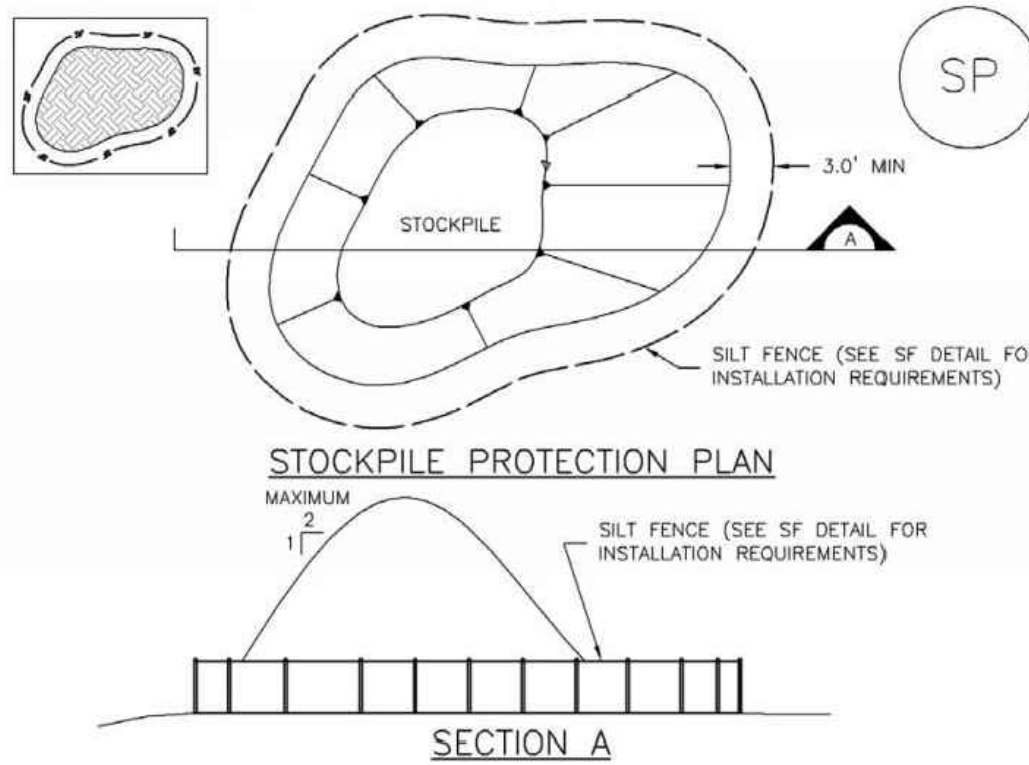
1. SEE PLAN VIEW FOR:
-LOCATION OF STAGING AREA(S).
-CONTRACTOR MAY ADJUST LOCATION AND SIZE OF STAGING AREA WITH APPROVAL FROM THE LOCAL JURISDICTION.
2. STABILIZED STAGING AREA SHOULD BE APPROPRIATE FOR THE NEEDS OF THE SITE. OVERSIZING RESULTS IN A LARGER AREA TO STABILIZE FOLLOWING CONSTRUCTION.
3. STAGING AREA SHALL BE STABILIZED PRIOR TO OTHER OPERATIONS ON THE SITE.
4. THE STABILIZED STAGING AREA SHALL CONSIST OF A MINIMUM 3" THICK GRANULAR MATERIAL.
5. UNLESS OTHERWISE SPECIFIED BY LOCAL JURISDICTION, ROCK SHALL CONSIST OF DOT SECT. #703, AASHTO #3 COARSE AGGREGATE OR 6" (MINUS) ROCK.
6. ADDITIONAL PERIMETER BMPs MAY BE REQUIRED INCLUDING BUT NOT LIMITED TO SILT FENCE AND CONSTRUCTION FENCING.

STABILIZED STAGING AREA MAINTENANCE NOTES

1. INSPECT BMPs EACH WORKDAY, AND MAINTAIN THEM IN EFFECTIVE OPERATING CONDITION. MAINTENANCE OF BMPs SHOULD BE PROACTIVE, NOT REACTIVE. INSPECT BMPs AS SOON AS POSSIBLE (AND ALWAYS WITHIN 24 HOURS) FOLLOWING A STORM THAT CAUSES SURFACE EROSION, AND PERFORM NECESSARY MAINTENANCE.
2. FREQUENT OBSERVATIONS AND MAINTENANCE ARE NECESSARY TO MAINTAIN BMPs IN EFFECTIVE OPERATING CONDITION. INSPECTIONS AND CORRECTIVE MEASURES SHOULD BE DOCUMENTED THOROUGHLY.
3. WHERE BMPs HAVE FAILED, REPAIR OR REPLACEMENT SHOULD BE INITIATED UPON DISCOVERY OF THE FAILURE.
4. ROCK SHALL BE REAPPLIED OR REGRADED AS NECESSARY IF RUTTING OCCURS OR UNDERLYING SUBGRADE BECOMES EXPOSED.

November 2010 Urban Drainage and Flood Control District
Urban Storm Drainage Criteria Manual Volume 3 SSA-3

Stockpile Management (SP) MM-2



SP-1. STOCKPILE PROTECTION

STOCKPILE PROTECTION INSTALLATION NOTES

1. SEE PLAN VIEW FOR:
-LOCATION OF STOCKPILES.
-TYPE OF STOCKPILE PROTECTION.
2. INSTALL PERIMETER CONTROLS IN ACCORDANCE WITH THEIR RESPECTIVE DESIGN DETAILS. SILT FENCE IS SHOWN IN THE STOCKPILE PROTECTION DETAILS; HOWEVER, OTHER TYPES OF PERIMETER CONTROLS INCLUDING SEDIMENT CONTROL LOGS OR ROCK SOCKS MAY BE SUITABLE IN SOME CIRCUMSTANCES. CONSIDERATIONS FOR DETERMINING THE APPROPRIATE TYPE OF PERIMETER CONTROL FOR A STOCKPILE INCLUDE WHETHER THE STOCKPILE IS LOCATED ON A PERVIOUS OR IMPERVIOUS SURFACE, THE RELATIVE HEIGHTS OF THE PERIMETER CONTROL AND STOCKPILE, THE ABILITY OF THE PERIMETER CONTROL TO CONTAIN THE STOCKPILE WITHOUT FAILING IN THE EVENT THAT MATERIAL FROM THE STOCKPILE SHIFTS OR SLUMPS AGAINST THE PERIMETER, AND OTHER FACTORS.
3. STABILIZE THE STOCKPILE SURFACE WITH SURFACE ROUGHENING, TEMPORARY SEEDING AND MULCHING, EROSION CONTROL BLANKETS, OR SOIL BINDERS. SOILS STOCKPILED FOR AN EXTENDED PERIOD (TYPICALLY FOR MORE THAN 60 DAYS) SHOULD BE SEEDED AND MULCHED WITH A TEMPORARY GRASS COVER ONCE THE STOCKPILE IS PLACED (TYPICALLY WITHIN 14 DAYS). USE OF MULCH ONLY OR A SOIL BINDER IS ACCEPTABLE IF THE STOCKPILE WILL BE IN PLACE FOR A MORE LIMITED TIME PERIOD (TYPICALLY 30-60 DAYS).
4. FOR TEMPORARY STOCKPILES ON THE INTERIOR PORTION OF A CONSTRUCTION SITE, WHERE OTHER DOWNGRADIENT CONTROLS, INCLUDING PERIMETER CONTROL, ARE IN PLACE, STOCKPILE PERIMETER CONTROLS MAY NOT BE REQUIRED.

November 2010 Urban Drainage and Flood Control District
Urban Storm Drainage Criteria Manual Volume 3 SP-3

MM-2 Stockpile Management (SM)

STOCKPILE PROTECTION MAINTENANCE NOTES

1. INSPECT BMPs EACH WORKDAY, AND MAINTAIN THEM IN EFFECTIVE OPERATING CONDITION. MAINTENANCE OF BMPs SHOULD BE PROACTIVE, NOT REACTIVE. INSPECT BMPs AS SOON AS POSSIBLE (AND ALWAYS WITHIN 24 HOURS) FOLLOWING A STORM THAT CAUSES SURFACE EROSION, AND PERFORM NECESSARY MAINTENANCE.
2. FREQUENT OBSERVATIONS AND MAINTENANCE ARE NECESSARY TO MAINTAIN BMPs IN EFFECTIVE OPERATING CONDITION. INSPECTIONS AND CORRECTIVE MEASURES SHOULD BE DOCUMENTED THOROUGHLY.
3. WHERE BMPs HAVE FAILED, REPAIR OR REPLACEMENT SHOULD BE INITIATED UPON DISCOVERY OF THE FAILURE.
4. IF PERIMETER PROTECTION MUST BE MOVED TO ACCESS SOIL STOCKPILE, REPLACE PERIMETER CONTROLS BY THE END OF THE WORKDAY.
5. STOCKPILE PERIMETER CONTROLS CAN BE REMOVED ONCE ALL THE MATERIAL FROM THE STOCKPILE HAS BEEN USED.

(DETAILS ADAPTED FROM PARKER, COLORADO, NOT AVAILABLE IN AUTOCAD)

NOTE: MANY JURISDICTIONS HAVE BMP DETAILS THAT VARY FROM UDFCD STANDARD DETAILS. CONSULT WITH LOCAL JURISDICTIONS AS TO WHICH DETAIL SHOULD BE USED WHEN DIFFERENCES ARE NOTED.

SP-4 Urban Drainage and Flood Control District
Urban Storm Drainage Criteria Manual Volume 3 November 2010

SM-6 Stabilized Staging Area (SSA)

STABILIZED STAGING AREA MAINTENANCE NOTES

5. STABILIZED STAGING AREA SHALL BE ENLARGED IF NECESSARY TO CONTAIN PARKING, STORAGE, AND UNLOADING/LOADING OPERATIONS.
6. THE STABILIZED STAGING AREA SHALL BE REMOVED AT THE END OF CONSTRUCTION. THE GRANULAR MATERIAL SHALL BE REMOVED OR, IF APPROVED BY THE LOCAL JURISDICTION, USED ON SITE, AND THE AREA COVERED WITH TOPSOIL, SEEDING AND MULCHED OR OTHERWISE STABILIZED IN A MANNER APPROVED BY LOCAL JURISDICTION.

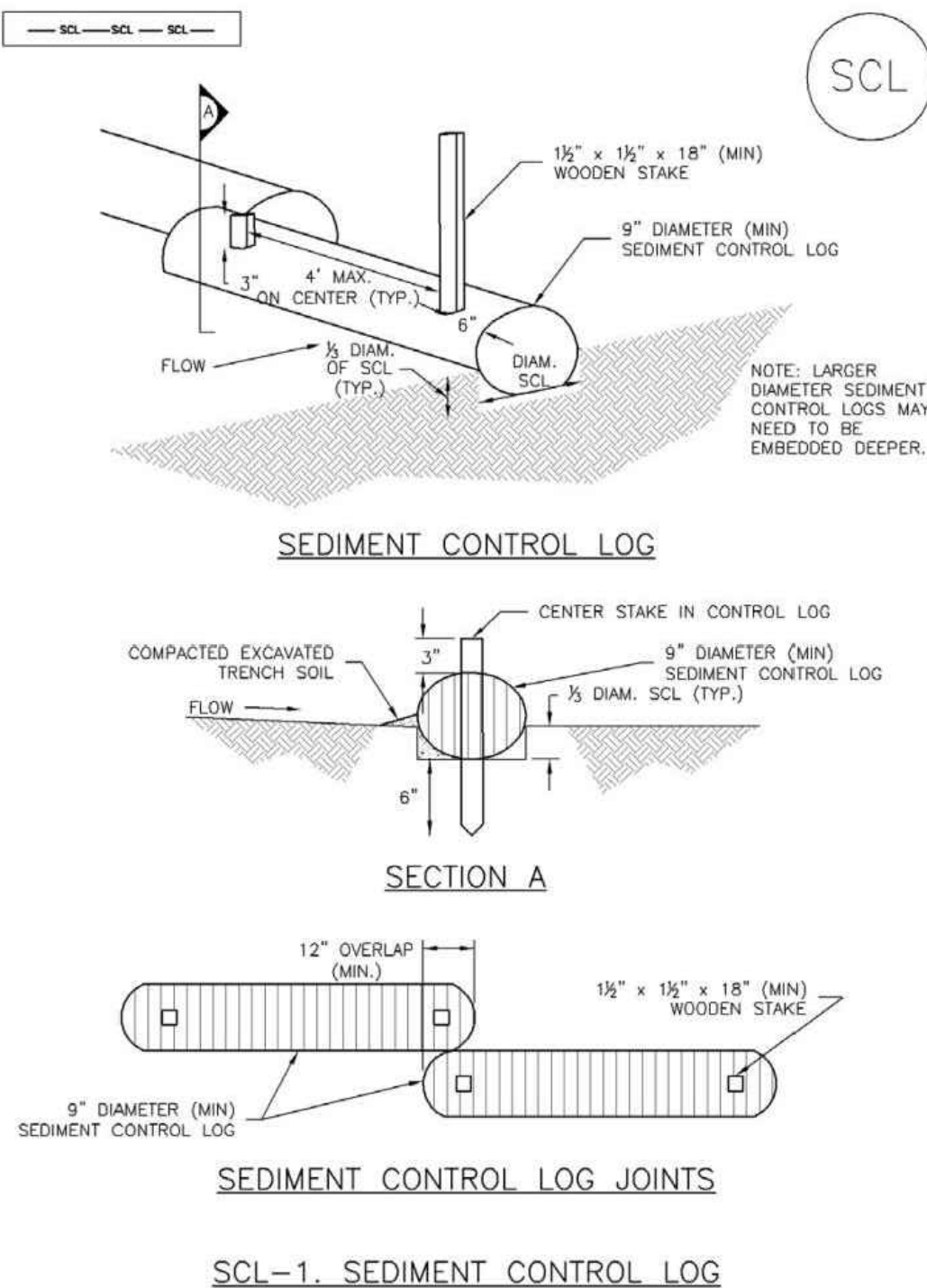
NOTE: MANY MUNICIPALITIES PROHIBIT THE USE OF RECYCLED CONCRETE AS GRANULAR MATERIAL FOR STABILIZED STAGING AREAS DUE TO DIFFICULTIES WITH RE-ESTABLISHMENT OF VEGETATION IN AREAS WHERE RECYCLED CONCRETE WAS PLACED.

NOTE: MANY JURISDICTIONS HAVE BMP DETAILS THAT VARY FROM UDFCD STANDARD DETAILS. CONSULT WITH LOCAL JURISDICTIONS AS TO WHICH DETAIL SHOULD BE USED WHEN DIFFERENCES ARE NOTED.

(DETAILS ADAPTED FROM DOUGLAS COUNTY, COLORADO, NOT AVAILABLE IN AUTOCAD)

SSA-4 Urban Drainage and Flood Control District
Urban Storm Drainage Criteria Manual Volume 3 November 2010

Sediment Control Log (SCL) SC-2



SCL-1. SEDIMENT CONTROL LOG

November 2010 Urban Drainage and Flood Control District
Urban Storm Drainage Criteria Manual Volume 3 SCL-3

Sediment Control Log (SCL) SC-2

SEDIMENT CONTROL LOG INSTALLATION NOTES

1. SEE PLAN VIEW FOR LOCATION AND LENGTH OF SEDIMENT CONTROL LOGS.
2. SEDIMENT CONTROL LOGS THAT ACT AS A PERIMETER CONTROL SHALL BE INSTALLED PRIOR TO ANY UPGRADE/LAND-DISTURBING ACTIVITIES.
3. SEDIMENT CONTROL LOGS SHALL CONSIST OF STRAW, COMPOST, EXCELSIOR OR COCONUT FIBER, AND SHALL BE FREE OF ANY NOXIOUS WEED SEEDS OR DEFECTS INCLUDING RIPS, HOLES AND OBVIOUS WEAR.
4. SEDIMENT CONTROL LOGS MAY BE USED AS SMALL CHECK DAMS IN DITCHES AND SWALES. HOWEVER, THEY SHOULD NOT BE USED IN PERENNIAL STREAMS OR HIGH VELOCITY DRAINAGE WAYS.
5. IT IS RECOMMENDED THAT SEDIMENT CONTROL LOGS BE TRENCHED INTO THE GROUND TO A DEPTH OF APPROXIMATELY 1/2 OF THE DIAMETER OF THE LOG. IF TRENCHING TO THIS DEPTH IS NOT FEASIBLE AND/OR DESIRABLE (SHORT TERM INSTALLATION WITH DESIRE NOT TO DAMAGE LANDSCAPE) A LESSER TRENCHING DEPTH MAY BE ACCEPTABLE WITH MORE ROBUST STAKING.
6. THE UPHILL SIDE OF THE SEDIMENT CONTROL LOG SHALL BE BACKFILLED WITH SOIL THAT IS FREE OF ROCKS AND DEBRIS. THE SOIL SHALL BE TIGHTLY COMPACTED INTO THE SHAPE OF A RIGHT TRIANGLE USING A SHOVEL OR WEIGHTED LAWN ROLLER.
7. FOLLOW MANUFACTURERS' GUIDANCE FOR STAKING. IF MANUFACTURERS' INSTRUCTIONS DO NOT SPECIFY SPACING, STAKES SHALL BE PLACED ON 4' CENTERS AND EMBEDDED A MINIMUM OF 6" INTO THE GROUND. 3" OF THE STAKE SHALL PROTRUDE FROM THE TOP OF THE LOG. STAKES THAT ARE BROKEN PRIOR TO INSTALLATION SHALL BE REPLACED.

SEDIMENT CONTROL LOG MAINTENANCE NOTES

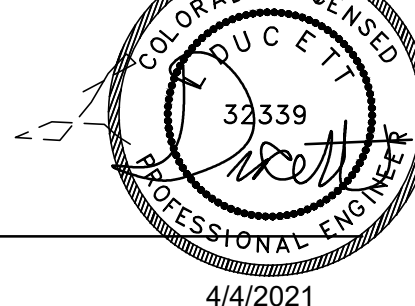
1. INSPECT BMPs EACH WORKDAY, AND MAINTAIN THEM IN EFFECTIVE OPERATING CONDITION. MAINTENANCE OF BMPs SHOULD BE PROACTIVE, NOT REACTIVE. INSPECT BMPs AS SOON AS POSSIBLE (AND ALWAYS WITHIN 24 HOURS) FOLLOWING A STORM THAT CAUSES SURFACE EROSION, AND PERFORM NECESSARY MAINTENANCE.
2. FREQUENT OBSERVATIONS AND MAINTENANCE ARE NECESSARY TO MAINTAIN BMPs IN EFFECTIVE OPERATING CONDITION. INSPECTIONS AND CORRECTIVE MEASURES SHOULD BE DOCUMENTED THOROUGHLY.
3. WHERE BMPs HAVE FAILED, REPAIR OR REPLACEMENT SHOULD BE INITIATED UPON DISCOVERY OF THE FAILURE.
4. SEDIMENT ACCUMULATED UPSTREAM OF SEDIMENT CONTROL LOG SHALL BE REMOVED AS NEEDED TO MAINTAIN FUNCTIONALITY OF THE BMP. TYPICALLY WHEN DEPTH OF ACCUMULATED SEDIMENTS IS APPROXIMATELY 1/2 OF THE HEIGHT OF THE SEDIMENT CONTROL LOG.
5. SEDIMENT CONTROL LOG SHALL BE REMOVED AT THE END OF CONSTRUCTION. IF DISTURBED AREAS EXIST AFTER REMOVAL, THEY SHALL BE COVERED WITH TOP SOIL, SEEDING AND MULCHED OR OTHERWISE STABILIZED IN A MANNER APPROVED BY THE LOCAL JURISDICTION.

(DETAILS ADAPTED FROM TOWN OF PARKER, COLORADO, JEFFERSON COUNTY, COLORADO, DOUGLAS COUNTY, COLORADO, AND CITY OF AURORA, COLORADO, NOT AVAILABLE IN AUTOCAD)

NOTE: MANY JURISDICTIONS HAVE BMP DETAILS THAT VARY FROM UDFCD STANDARD DETAILS. CONSULT WITH LOCAL JURISDICTIONS AS TO WHICH DETAIL SHOULD BE USED WHEN DIFFERENCES ARE NOTED.

November 2010 Urban Drainage and Flood Control District
Urban Storm Drainage Criteria Manual Volume 3 SCL-5

THIS DESIGN WAS PREPARED UNDER MY DIRECT SUPERVISION
FOR AND ON BEHALF OF TERRA NOVA ENGINEERING, INC.



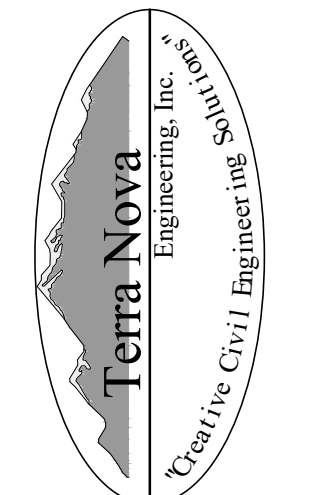
L. DUCETT, P.E.
COLORADO P.E. NO. 32339

4/4/2021

REVISIONS	DESCRIPTION	DATE
NO.		

UNTIL SUCH TIME AS THESE
DRAWINGS ARE APPROVED
BY THE APPROPRIATE
REVIEWING AGENCIES,
THESE DRAWINGS ARE NOT
TO BE USED FOR ANY
PURPOSES DESIGNATED BY
WRITTEN AUTHORIZATION.

PREPARED FOR:
MVEA
ATTN: DAVE WALDNER
11140 E. WOODMEN RD
PEYTON, CO 80831
(719) 495-2283



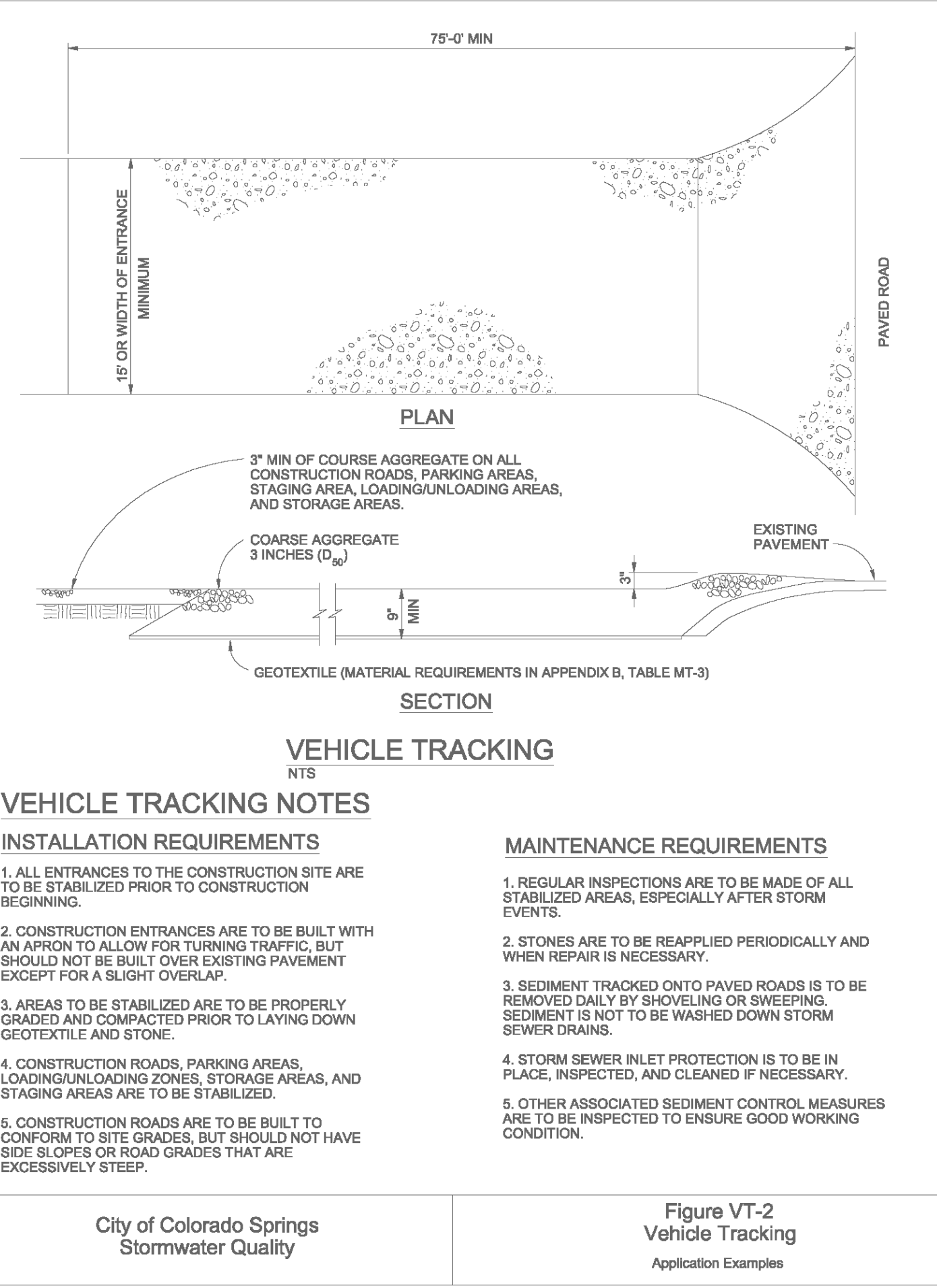
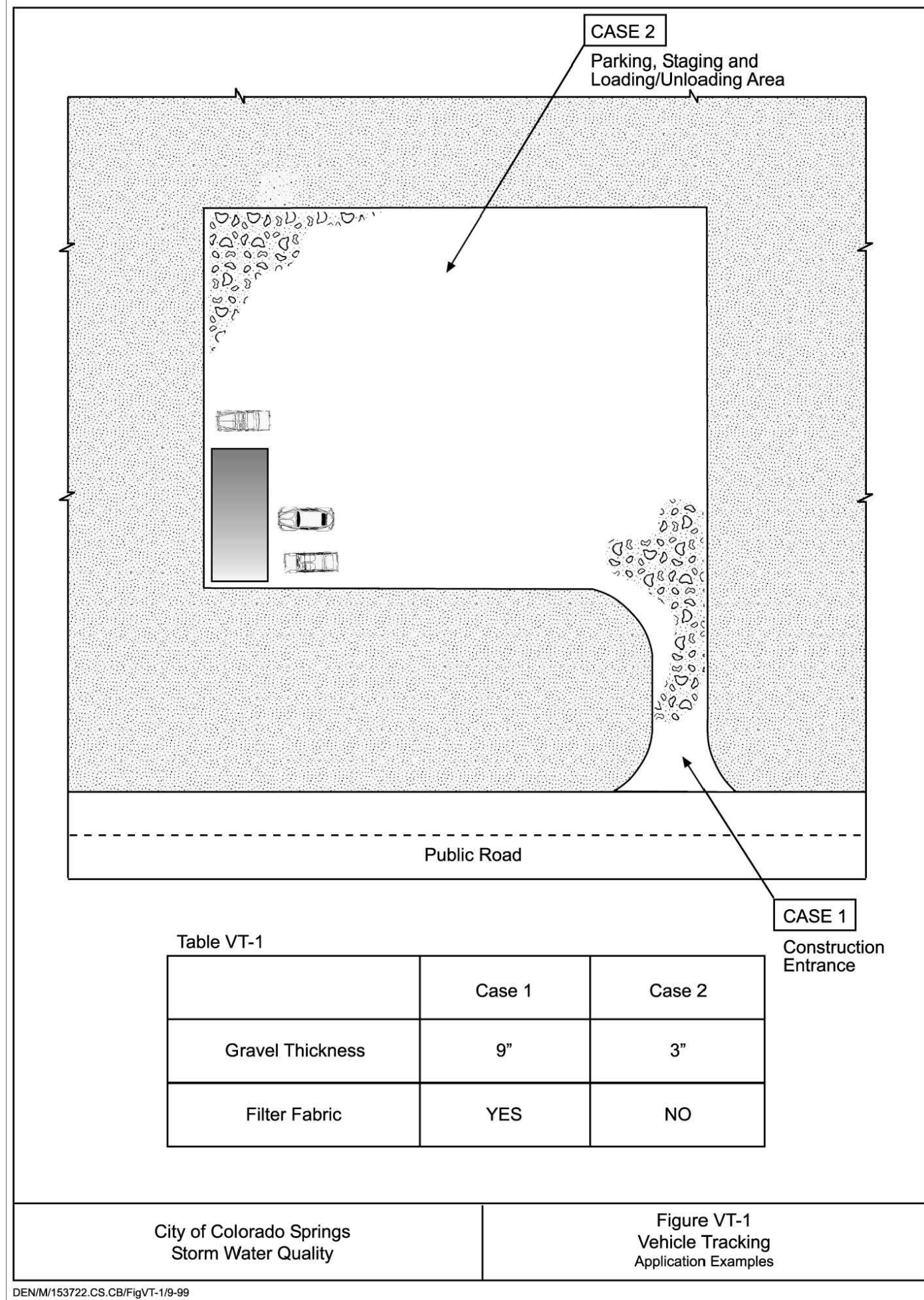
721 S. 25RD STREET
COLORADO SPRINGS, CO 80904
OFFICE: 719-635-6422
FAX: 719-635-6426
www.tnec.com

MVEA EASTONVILLE 1

GRADING, EROSION, & SEDIMENT CONTROL PLAN
EROSION CONTROL DETAILS

DESIGNED BY	LD
DRAWN BY	JF
CHECKED BY	LD
H-SCALE	AS SHOWN
V-SCALE	NA
JOB NO.	2111.00
DATE ISSUED	4/4/21
SHEET NO.	6 OF 8

N:\jobs\2111.00\Drawings\211100.GEC.dwg, 4/8/2021 4:38:35 PM, DWG To PDF.pc3



or irrigation to wet and settle the seed bed. Firming of the seedbed following seeding will improve results during dry or warm seeding times.

Table 14-9. Recommended Seed Mix for High Water Table Conditions¹

Common Name (Variety)	Scientific Name	Growth Season	Growth Form	Seeds/Lb	Lbs PLS/Acre Drilled	Lbs PLS/Acre Broadcast or Hydroseeded
Redtop ²	<i>Agrostis alba</i>	Warm	Sod	5,000,000	0.1	0.2
Switchgrass (Pathfinder)	<i>Panicum virgatum</i>	Warm	Sod/Bunch	389,000	2.2	4.4
Western wheatgrass (Arriba)	<i>Pascopyrum smithii</i>	Cool	Sod	110,000	7.9	15.8
Indian saltgrass	<i>Distichlis spicata</i>	Warm	Sod	520,000	1.0	2.0
Woody sedge	<i>Carex lamnifolia</i>	Cool	Sod	400,000	0.1	0.2
Baltic rush	<i>Juncus balticus</i>	Cool	Sod	109,300,000	0.1	0.2
Prairie cordgrass	<i>Spartina pectinata</i>	Cool	Sod	110,000	1.0	2.0
Annual rye	<i>Lolium multiflorum</i>	Cool	Cover crop	227,000	10.0	20.0
				TOTAL	22.4	44.8
Wildflowers						
Nuttall's sunflower	<i>Helianthus nuttallii</i>	---	---	250,000	0.10	0.20
Wild bergamot	<i>Monarda fistulosa</i>	---	---	1,450,000	0.12	0.24
Yarrow	<i>Achillea millefolium</i>	---	---	2,770,000	0.06	0.12
Blue vervain	<i>Verbena hastata</i>	---	---		0.12	0.24
				TOTAL	0.40	0.80

¹For portions of facilities located near or on the bottom or where wet soil conditions occur. Planting of potted nursery stock wetland plants 2-foot on-center is recommended for sites with wetland hydrology.

²Non-native.

Mulching (MU)

EC-4

Description

Mulching consists of evenly applying straw, hay, shredded wood mulch, rock, bark or compost to disturbed soils and securing the mulch by crimping, tackifiers, netting or other measures. Mulching helps reduce erosion by protecting bare soil from rainfall impact, increasing infiltration, and reducing runoff. Although often applied in conjunction with temporary or permanent seeding, it can also be used for temporary stabilization of areas that cannot be reseeded due to seasonal constraints.



Photograph MU-1. An area that was recently seeded, mulched, and crimped.

Mulch can be applied either using standard mechanical dry application methods or using hydromulching equipment that hydraulically applies a slurry of water, wood fiber mulch, and often a tackifier.

Appropriate Uses

Use mulch in conjunction with seeding to help protect the seedbed and stabilize the soil. Mulch can also be used as a temporary cover on low to mild slopes to help temporarily stabilize disturbed areas where growing season constraints prevent effective reseeding. Disturbed areas should be properly mulched and tacked, or seeded, mulched and tacked promptly after final grade is reached (typically within no longer than 14 days) on portions of the site not otherwise permanently stabilized.

Standard dry mulching is encouraged in most jurisdictions; however, hydromulching may not be allowed in certain jurisdictions or may not be allowed near waterways.

Do not apply mulch during windy conditions.

Design and Installation

Prior to mulching, surface-roughen areas by rolling with a crimping or punching type roller or by track walking. Track walking should only be used where other methods are impractical because track walking with heavy equipment typically compacts the soil.

A variety of mulches can be used effectively at construction sites. Consider the following:

Mulch	
Functions	
Erosion Control	Yes
Sediment Control	Moderate
Site/Material Management	No

EC-4

Mulching (MU)

- Clean, weed-free and seed-free cereal grain straw should be applied evenly at a rate of 2 tons per acre and must be tacked or fastened by a method suitable for the condition of the site. Straw mulch must be anchored (and not merely placed) on the surface. This can be accomplished mechanically by crimping or with the aid of tackifiers or nets. Anchoring with a crimping implement is preferred, and is the recommended method for areas flatter than 3:1. Mechanical crimpers must be capable of tucking the long mulch fibers into the soil to a depth of 3 inches without cutting them. An agricultural disk, while not an ideal substitute, may work if the disk blades are dull or blunted and set vertically; however, the frame may have to be weighted to afford proper soil penetration.
- Grass hay may be used in place of straw; however, because hay is comprised of the entire plant including seed, mulching with hay may seed the site with non-native grass species which might in turn out-compete the native seed. Alternatively, native species of grass hay may be purchased, but can be difficult to find and are more expensive than straw. Purchasing and utilizing a certified weed-free straw is an easier and less costly mulching method. When using grass hay, follow the same guidelines as for straw (provided above).
- On small areas sheltered from the wind and heavy runoff, spraying a tackifier on the mulch is satisfactory for holding it in place. For steep slopes and special situations where greater control is needed, erosion control blankets anchored with stakes should be used instead of mulch.
- Hydraulic mulching consists of wood cellulose fibers mixed with water and a tackifying agent and should be applied at a rate of no less than 1,500 pounds per acre (1,425 lbs of fibers mixed with at least 75 lbs of tackifier) with a hydraulic mulcher. For steeper slopes, up to 2000 pounds per acre may be required for effective hydroseeding. Hydromulch typically requires up to 24 hours to dry; therefore, it should not be applied immediately prior to inclement weather. Application to roads, waterways and existing vegetation should be avoided.
- Erosion control mats, blankets, or nets are recommended to help stabilize steep slopes (generally 3:1 and steeper) and waterways. Depending on the product, these may be used alone or in conjunction with grass or straw mulch. Normally, use of these products will be restricted to relatively small areas. Biodegradable mats made of straw and jute, straw-coconut, coconut fiber, or excelsior can be used instead of mulch. (See the ECM/TRM BMP for more information.)
- Some tackifiers or binders may be used to anchor mulch. Check with the local jurisdiction for allowed tackifiers. Manufacturer's recommendations should be followed at all times. (See the Soil Binder BMP for more information on general types of tackifiers.)
- Rock can also be used as mulch. It provides protection of exposed soils to wind and water erosion and allows infiltration of precipitation. An aggregate base course can be spread on disturbed areas for temporary or permanent stabilization. The rock mulch layer should be thick enough to provide full coverage of exposed soil on the area it is applied.

Maintenance and Removal

After mulching, the bare ground surface should not be more than 10 percent exposed. Reapply mulch, as needed, to cover bare areas.

THIS DESIGN WAS PREPARED UNDER MY DIRECT SUPERVISION
FOR AND ON BEHALF OF TERRA NOVA ENGINEERING, INC.

33339

PROFESSIONAL ENGINEER

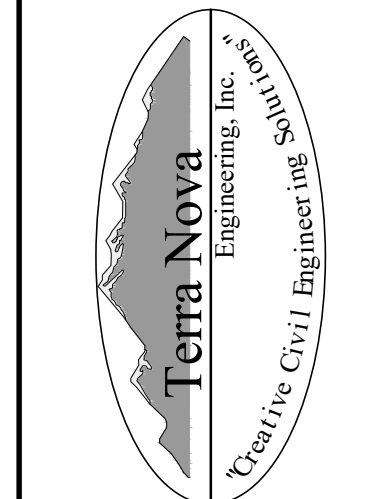
L. DUCETT, P.E.
COLORADO P.E. NO. 32339

4/4/2021

REVISIONS	NO.	DESCRIPTION	DATE

UNTIL SUCH TIME AS THESE
DRAWINGS ARE APPROVED
BY THE APPROPRIATE
REVIEWING AGENCIES,
THESE DRAWINGS ARE NOT
TO BE USED FOR ANY
PURPOSES DESIGNATED BY
THE CITY OF PEYTON.
WRITTEN AUTHORIZATION.

PREPARED FOR:
MVEA
ATTN: DAVE WALDNER
11140 E. WOODMEN RD
PEYTON, CO 80831
(719) 495-2283



721 S. 23RD STREET
COLORADO SPRINGS, CO 80904
OFFICE: 719-635-6422
FAX: 719-635-6426
www.terrainc.com

MVEA EASTONVILLE 1

GRADING, EROSION, & SEDIMENT CONTROL PLAN
EROSION CONTROL DETAILS

DESIGNED BY LD
DRAWN BY JF
CHECKED BY LD
H-SCALE AS SHOWN
V-SCALE NA
JOB NO. 2111.00
DATE ISSUED 4/4/21
SHEET NO. 7 OF 8

Earth Dikes and Drainage Swales (ED/DS) EC-10

Description

Earth dikes and drainage swales are temporary storm conveyance channels constructed either to divert runoff around slopes or to convey runoff to additional sediment control BMPs prior to discharge of runoff from a site. Drainage swales may be lined or unlined, but if an unlined swale is used, it must be well compacted and capable of resisting erosive velocities.

Appropriate Uses

Earth dikes and drainage swales are typically used to control the flow path of runoff at a construction site by diverting runoff around areas prone to erosion, such as steep slopes. Earth dikes and drainage swales may also be constructed as temporary conveyance features. This will direct runoff to additional sediment control treatment BMPs, such as sediment traps or basins.

Design and Installation

When earth dikes are used to divert water for slope protection, the earth dike typically consists of a horizontal ridge of soil placed perpendicular to the slope and angled slightly to provide drainage along the contour. The dike is used in conjunction with a swale or a small channel upslope of the berm to convey the diverted water. Temporary diversion dikes can be constructed by excavation of a V-shaped trench or ditch and placement of the fill on the downslope side of the cut. There are two types of placement for temporary slope diversion dikes:

- A dike located at the top of a slope to divert upland runoff away from the disturbed area and convey it in a temporary or permanent channel.
- A diversion dike located at the base or mid-slope of a disturbed area to intercept runoff and reduce the effective slope length.

Depending on the project, either an earth dike or drainage swale may be more appropriate. If there is a need for cut on the project, then an excavated drainage swale may be better suited. When the project is primarily fill, then a conveyance constructed using a berm may be the better option.

All dikes or swales receiving runoff from a disturbed area should direct stormwater to a sediment control BMP such as a sediment trap or basin.

Earth Dikes and Drainage Swales	
Functions	
Erosion Control	Yes
Sediment Control	Moderate
Site/Material Management	No



Photograph ED/DS-1. Example of an earth dike used to divert flows at a construction site. Photo courtesy of CDOT.

EC-10 Earth Dikes and Drainage Swales (ED/DS)

Unlined dikes or swales should only be used for intercepting sheet flow runoff and are not intended for diversion of concentrated flows.

Details with notes are provided for several design variations, including:

- ED-1. Unlined Earth Dike formed by Berm
- DS-1. Unlined Excavated Swale
- DS-2. Unlined Swale Formed by Cut and Fill
- DS-3. ECB-lined Swale
- DS-4. Synthetic-lined Swale
- DS-5. Riprap-lined Swale

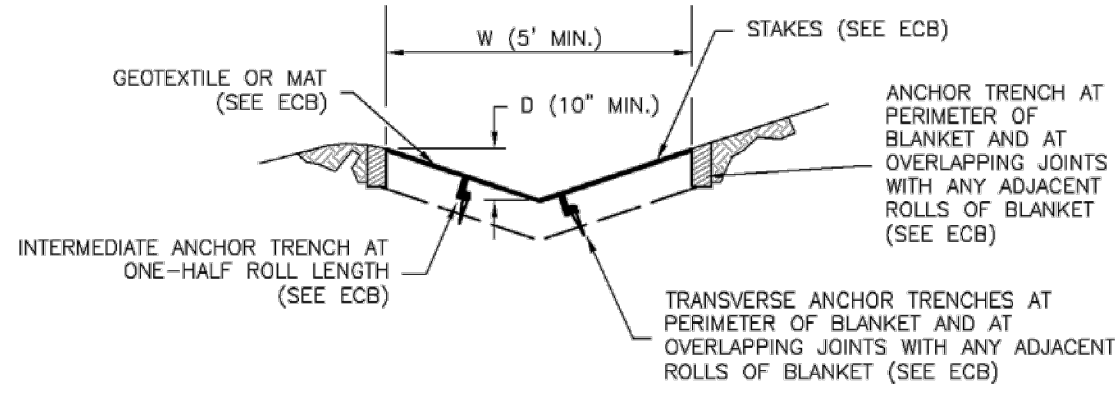
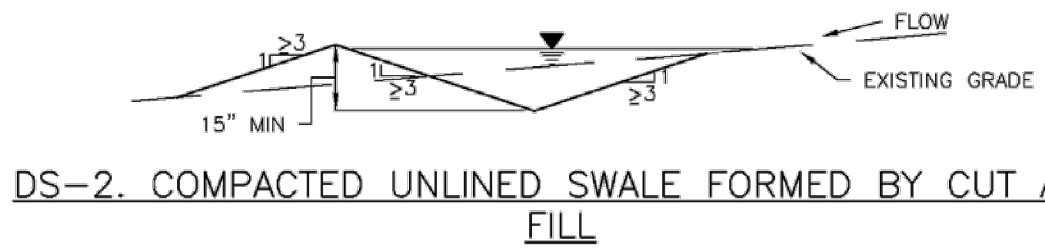
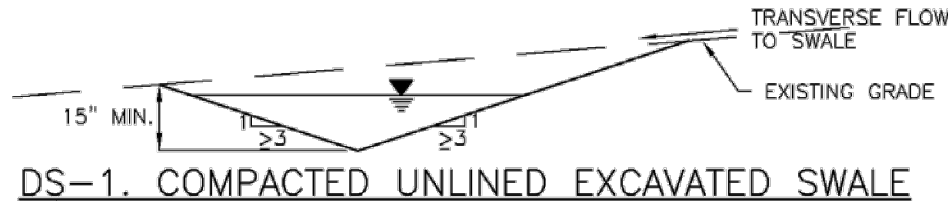
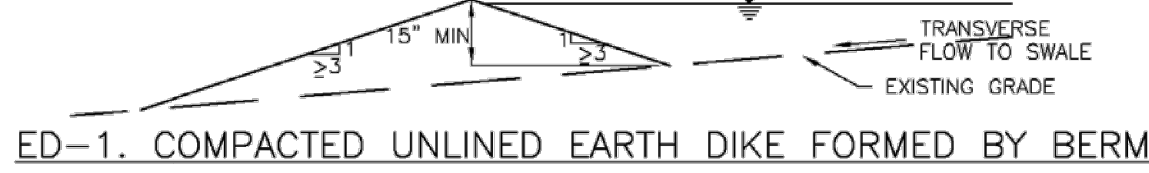
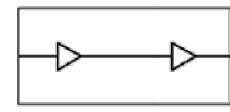
The details also include guidance on permissible velocities for cohesive channels if unlined approaches will be used.

Maintenance and Removal

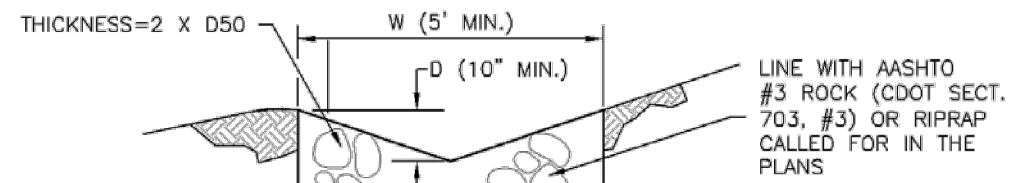
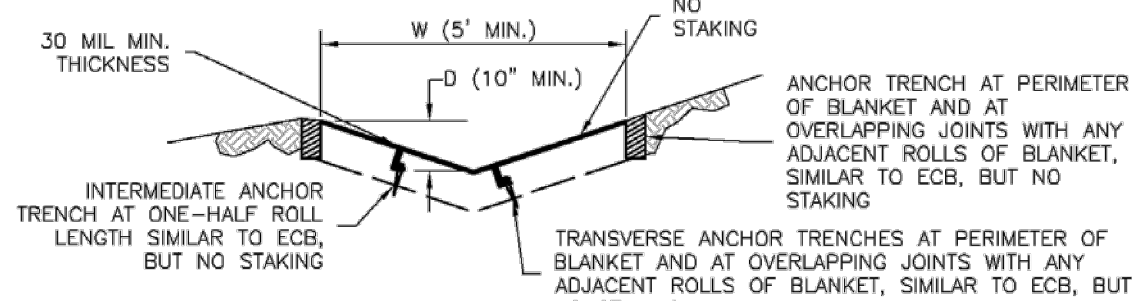
Inspect earth dikes for stability, compaction, and signs of erosion and repair. Inspect side slopes for erosion and damage to erosion control fabric. Stabilize slopes and repair fabric as necessary. If there is reoccurring extensive damage, consider installing rock check dams or lining the channel with riprap.

If drainage swales are not permanent, remove dikes and fill channels when the upstream area is stabilized. Stabilize the fill or disturbed area immediately following removal by revegetation or other permanent stabilization method approved by the local jurisdiction.

Earth Dikes and Drainage Swales (ED/DS) EC-10



EC-10 Earth Dikes and Drainage Swales (ED/DS)



EARTH DIKE AND DRAINAGE SWALE INSTALLATION NOTES

- SEE SITE PLAN FOR:
 - LOCATION OF DIVERSION SWALE.
 - TYPE OF SWALE (UNLINED, COMPACTED AND/OR UNLINED).
 - LENGTH OF EACH SWALE.
 - DEPTH, D, AND WIDTH, W, DIMENSIONS.
 - FOR ECB/TRM LINED DITCH, SEE ECB DETAIL.
 - FOR RIPRAP LINED DITCH, SIZE OF RIPRAP, D50.
- SEE DRAINAGE PLANS FOR DETAILS OF PERMANENT CONVEYANCE FACILITIES AND/OR DIVERSION SWALES EXCEEDING 2-YEAR FLOW RATE OR 10 CFS.
- EARTH DIKES AND SWALES INDICATED ON SWMP PLAN SHALL BE INSTALLED PRIOR TO LAND-DISTURBING ACTIVITIES IN PROXIMITY.
- EMBANKMENT IS TO BE COMPACTED TO 90% OF MAXIMUM DENSITY AND WITHIN 2% OF OPTIMUM MOISTURE CONTENT ACCORDING TO ASTM D698.
- SWALES ARE TO DRAIN TO A SEDIMENT CONTROL BMP.
- FOR LINED DITCHES, INSTALLATION OF ECB/TRM SHALL CONFORM TO THE REQUIREMENTS OF THE ECB DETAIL.
- WHEN CONSTRUCTION TRAFFIC MUST CROSS A DIVERSION SWALE, INSTALL A TEMPORARY CULVERT WITH A MINIMUM DIAMETER OF 12 INCHES.

Earth Dikes and Drainage Swales (ED/DS) EC-10

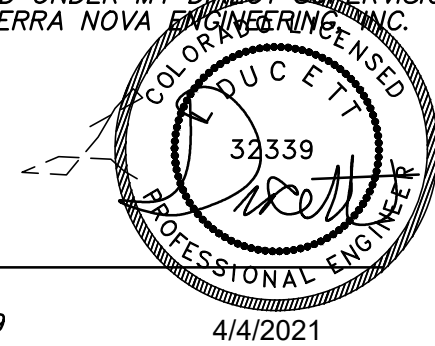
EARTH DIKE AND DRAINAGE SWALE MAINTENANCE NOTES

- INSPECT BMPs EACH WORKDAY, AND MAINTAIN THEM IN EFFECTIVE OPERATING CONDITION. MAINTENANCE OF BMPs SHOULD BE PROACTIVE, NOT REACTIVE. INSPECT BMPs AS SOON AS POSSIBLE (AND ALWAYS WITHIN 24 HOURS) FOLLOWING A STORM THAT CAUSES SURFACE EROSION, AND PERFORM NECESSARY MAINTENANCE.
- FREQUENT OBSERVATIONS AND MAINTENANCE ARE NECESSARY TO MAINTAIN BMPs IN EFFECTIVE OPERATING CONDITION. INSPECTIONS AND CORRECTIVE MEASURES SHOULD BE DOCUMENTED THOROUGHLY.
- WHERE BMPs HAVE FAILED, REPAIR OR REPLACEMENT SHOULD BE INITIATED UPON DISCOVERY OF THE FAILURE.
- SWALES SHALL REMAIN IN PLACE UNTIL THE END OF CONSTRUCTION; IF APPROVED BY LOCAL JURISDICTION, SWALES MAY BE LEFT IN PLACE.
- WHEN A SWALE IS REMOVED, THE DISTURBED AREA SHALL BE COVERED WITH TOPSOIL, SEEDED AND MULCHED OR OTHERWISE STABILIZED IN A MANNER APPROVED BY LOCAL JURISDICTION.

(DETAIL ADAPTED FROM DOUGLAS COUNTY, COLORADO AND THE CITY OF COLORADO SPRINGS, COLORADO, NOT AVAILABLE IN AUTOCAD)

NOTE: MANY JURISDICTIONS HAVE BMP DETAILS THAT VARY FROM UDFCD STANDARD DETAILS. CONSULT WITH LOCAL JURISDICTIONS AS TO WHICH DETAIL SHOULD BE USED WHEN DIFFERENCES ARE NOTED.

THIS DESIGN WAS PREPARED UNDER MY DIRECT SUPERVISION FOR AND ON BEHALF OF TERRA NOVA ENGINEERING, INC.



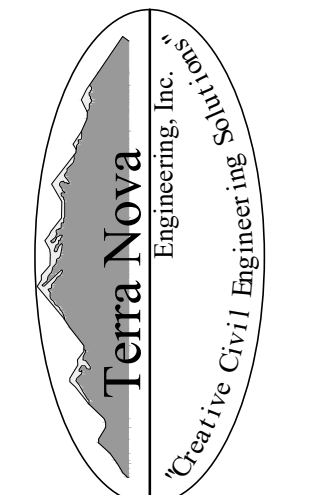
L. DUCETT, P.E.
COLORADO P.E. NO. 32339

4/4/2021

REVISIONS	NO.	DESCRIPTION	DATE

UNTIL SUCH TIME AS THESE DRAWINGS ARE APPROVED BY THE APPROPRIATE REVIEWING AGENCIES, THIS DRAWING IS NOT TO BE USED FOR ANY PURPOSES DESIGNATED BY WRITTEN AUTHORIZATION.

PREPARED FOR:
MVEA
ATTN: DAVE WALDNER
11140 E. WOODMEN RD
PEYTON, CO 80831
(719) 495-2283



721 S. 23RD STREET
COLORADO SPRINGS, CO 80904
OFFICE: 719-635-6422
FAX: 719-635-6426
www.tnec.com

MVEA EASTONVILLE 1

GRADING, EROSION, & SEDIMENT CONTROL PLAN
EROSION CONTROL DETAILS

DESIGNED BY	LD
DRAWN BY	JF
CHECKED BY	LD
H-SCALE	AS SHOWN
V-SCALE	NA
JOB NO.	2111.00
DATE ISSUED	4/4/21
SHEET NO.	8 OF 8