

(N) COPPER CLAD LIGHTNING ROD TO BE INSTALLED PER TES STRUCTURAL ANALYSIS (PROJECT #: 104224, DATED 04/27/21)

(N) MONOPOLE EXTENSION TO BE INSTALLED PER TES STRUCTURAL ANALYSIS (PROJECT #: 104224, DATED 04/27/21)

(E) SPRINT EQUIPMENT
(3) DOUBLE SUPPORT ARMS

(N) T-MOBILE EQUIPMENT TO BE INSTALLED
(4) ANTENNAS
(4) RRHs
(2) BREAKOUT PENDANT
(6) METROSITE CROSSOVER CHANNEL BRACKETS
(6) CROSSOVER PLATES
(3) SUPPORT RAIL PIPES
(2) METROSITE SUPPORT RAIL END CONNECTION KITS

(N) FLANGE PLATE TO BE INSTALLED PER TES STRUCTURAL ANALYSIS (PROJECT #: 104224, DATED 04/27/21)

(N) FLAT BAR REINFORCEMENTS TO BE INSTALLED PER TES STRUCTURAL ANALYSIS (PROJECT #: 104224, DATED 04/27/21)

(N) ANCHOR ROD REINFORCEMENTS TO BE INSTALLED PER TES STRUCTURAL ANALYSIS (PROJECT #: 104224, DATED 04/27/21)

NEW LIGHTNING ROD TIP
ELEV. = 84'-0"

TOP OF NEW MONOPOLE EXTENSION
ELEV. = 80'-0"

TOP OF EXISTING TOWER
ELEV. = 60'-0"

EXISTING & PROPOSED TMO ACL
ELEV. = 58'-0"

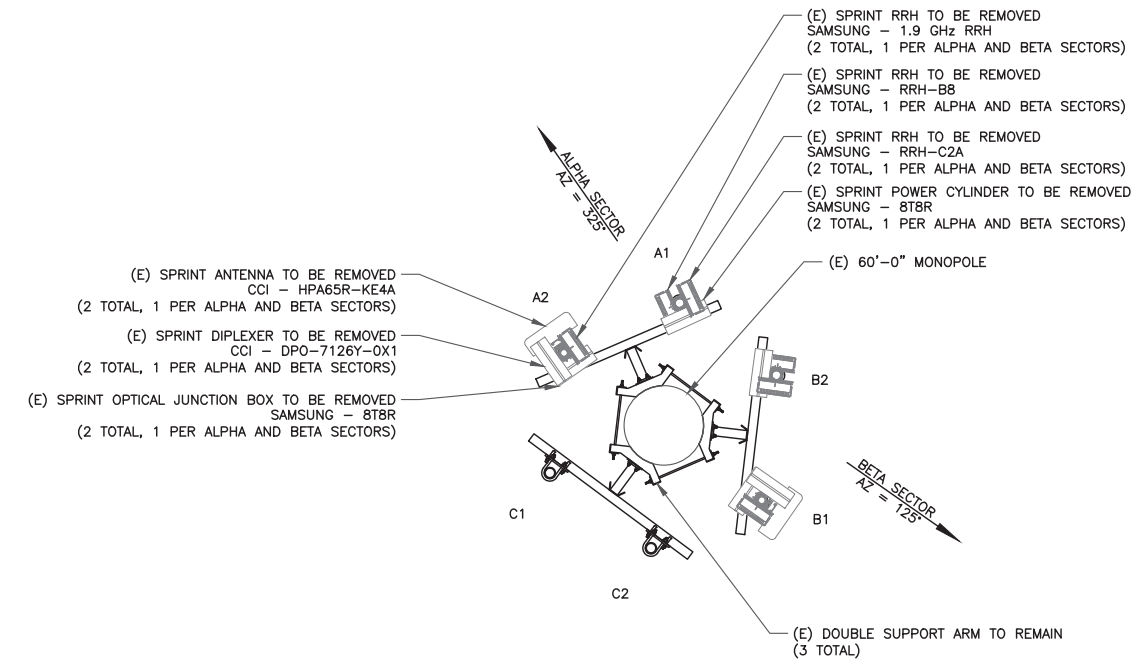
(E) 60'-0" MONOPOLE

(E) SPRINT FEEDLINES TO REMAIN
(2) HYBRID CABLES (2.2")

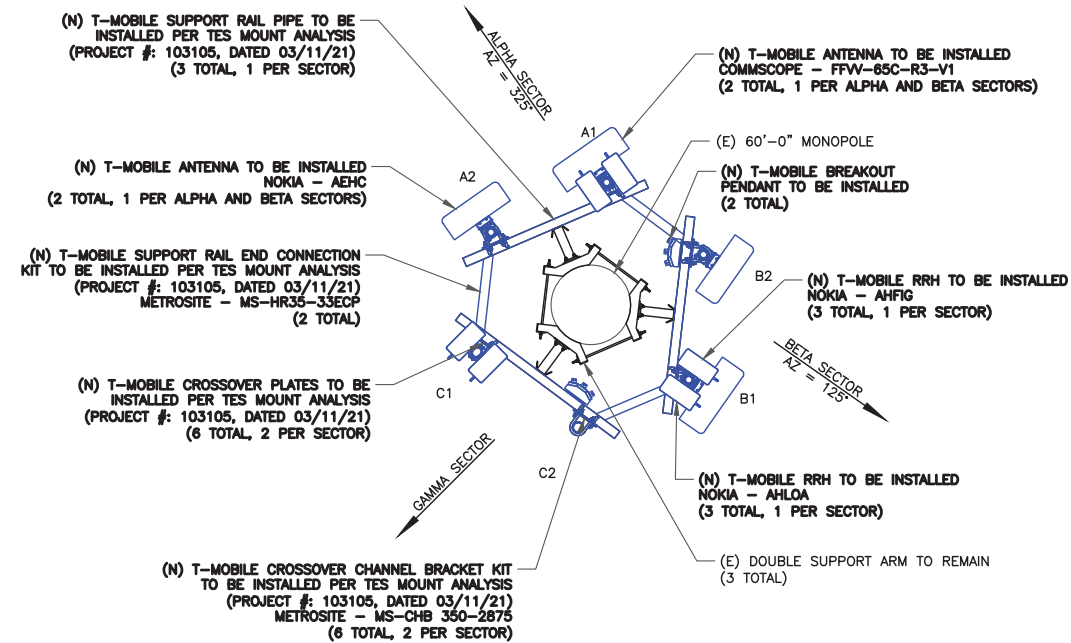
(N) T-MOBILE FEEDLINES TO BE INSTALLED
(2) HCS 2.0 HYBRID CABLES (1.8")

GROUND LEVEL
ELEV. = 0'-0"

1 FINAL ELEVATION
SCALE: NOT TO SCALE



2 EXISTING ANTENNA PLAN
SCALE: NOT TO SCALE



3 FINAL ANTENNA PLAN
SCALE: NOT TO SCALE

T-Mobile

12920 SE 38TH STREET
BELLEVUE, WA 98006



470 DAVIDSON ROAD
PITTSBURGH, PA 15239
TEL: (740) 260-9710

PLANS PREPARED BY:



421 FAYETTEVILLE ST, SUITE 600
RALEIGH, NC 27601

REV. DATE DESCRIPTION BY

REV.	DATE	DESCRIPTION	BY
1	08/26/21	REVISED PER CLIENT	DPL
0	05/12/21	ISSUED FOR CONSTRUCTION	DLF
A	05/07/21	ISSUED FOR REVIEW	AMG

DRAWN BY: CHECKED BY:

AMG DLF

KHA PROJECT NUMBER:

KHCLC- 11797

ENGINEER SEAL:



Exp. 10/31/21

PROJECT INFORMATION:

DN06163A
SPRINT RETAIN SITE
DN14XC247
SBA #: CO46103-A
7353 WEST HIGHWAY 24
MANITOU SPRINGS, CO 80829

SHEET TITLE:

TOWER ELEVATION
& ANTENNA PLAN

SHEET NUMBER:

C-2