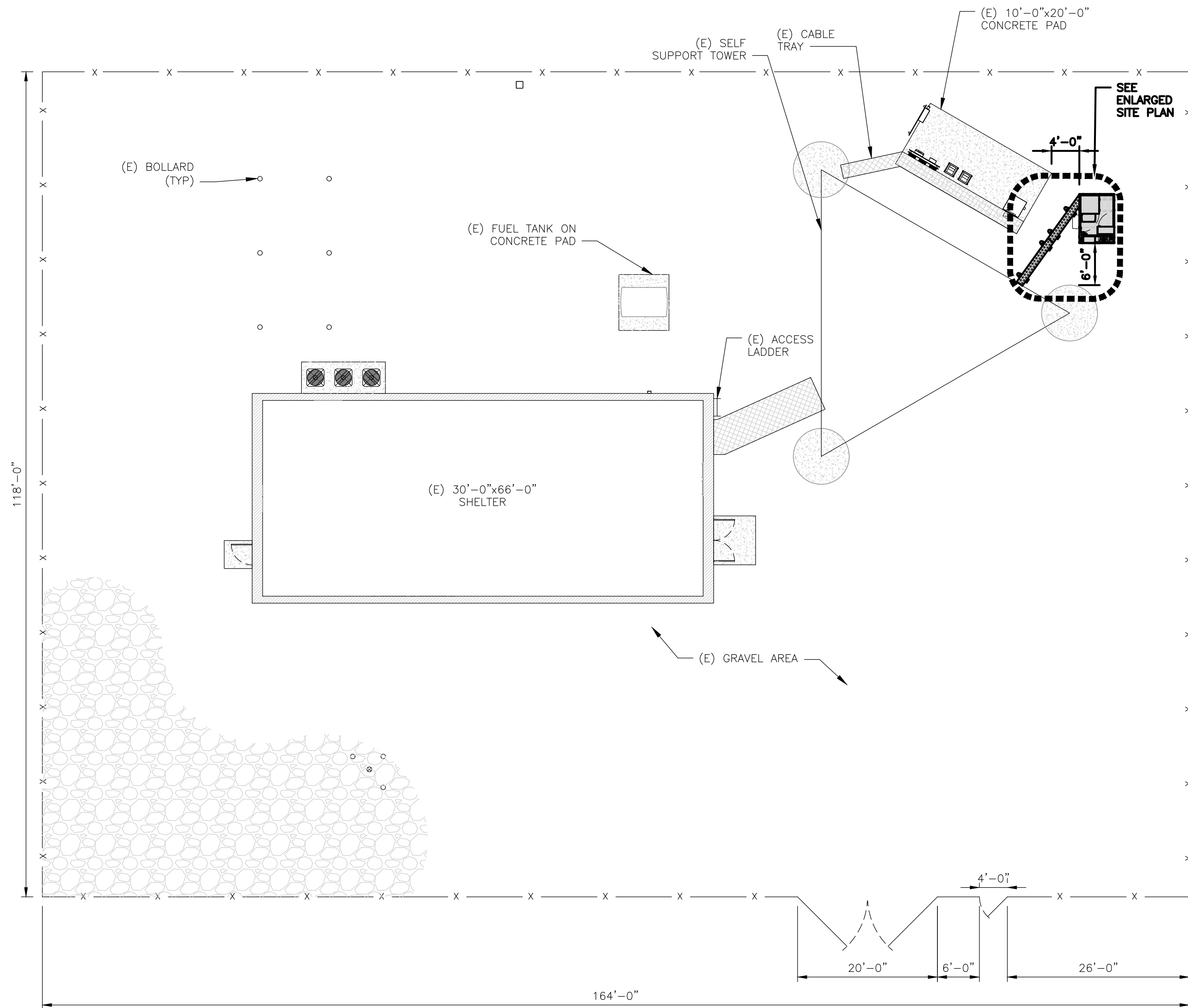


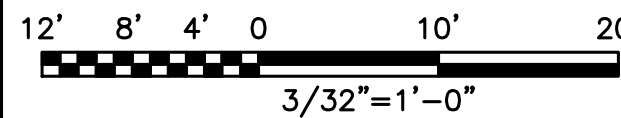
NOTES

1. CONTRACTOR SHALL FIELD VERIFY ALL DIMENSIONS.
2. ANTENNAS AND MOUNTS OMITTED FOR CLARITY.

1
A-2



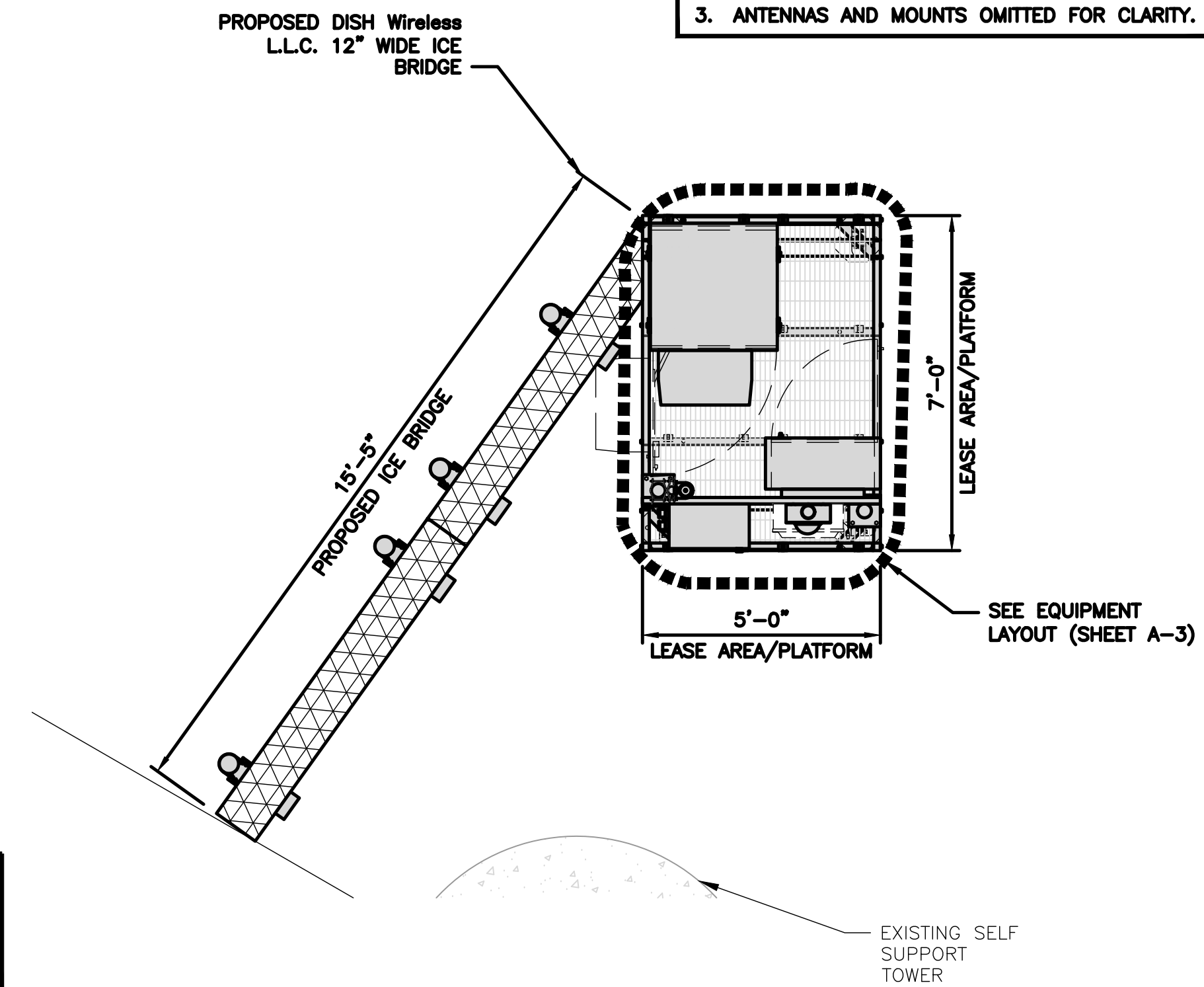
SITE PLAN



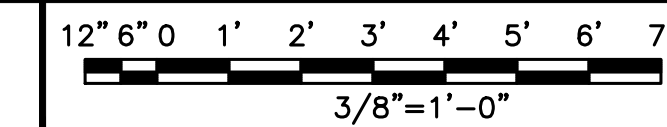
1

NOTES

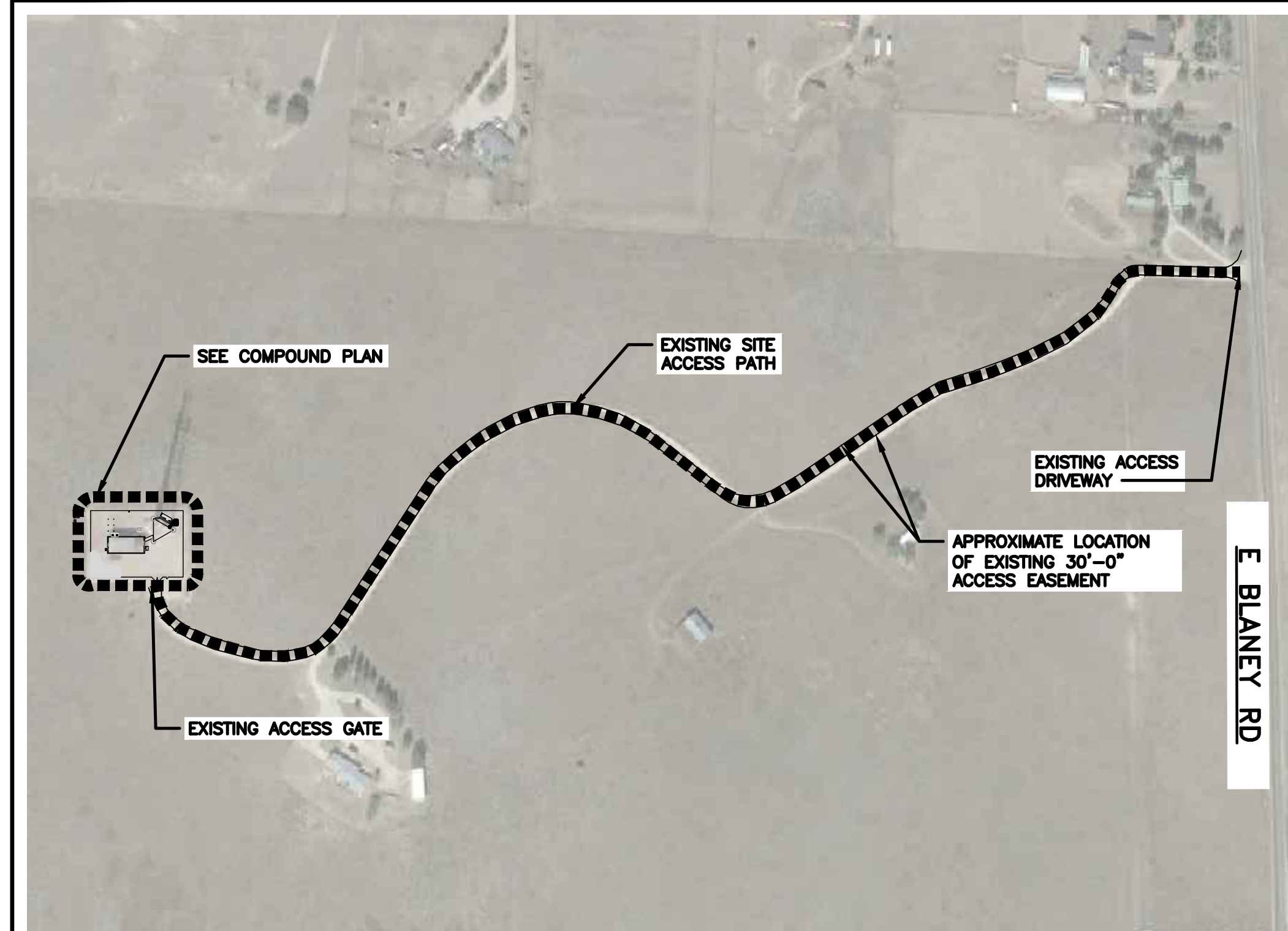
1. CONTRACTOR SHALL FIELD VERIFY ALL DIMENSIONS.
2. CONTRACTOR SHALL MAINTAIN A 10'-0" MINIMUM SEPARATION BETWEEN THE PROPOSED GPS UNIT, TRANSMITTING ANTENNAS AND EXISTING GPS UNITS.
3. ANTENNAS AND MOUNTS OMITTED FOR CLARITY.



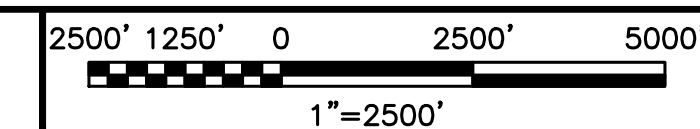
ENLARGED SITE PLAN



2



OVERALL SITE PLAN



3

AN EXISTING CONDITIONS SURVEY WAS NOT AVAILABLE AT THE TIME THIS DRAWING'S CREATION



5701 SOUTH SANTA FE DRIVE
LITTLETON, CO 80120

FROM ZERO TO INFINIGY

the solutions are endless

2500 W. HIGGINS RD., SUITE 500 |
HOFFMAN ESTATES, IL 60169
PHONE: 847-648-4068 | FAX: 518-690-0793
WWW.INFINIGY.COM



IT IS A VIOLATION OF LAW FOR ANY PERSON, UNLESS THEY ARE ACTING UNDER THE DIRECTION OF A LICENSED PROFESSIONAL ENGINEER, TO ALTER THIS DOCUMENT.

DRAWN BY:	CHECKED BY:	APPROVED BY:
DB	SS	SS

RFDS REV #: N/A

CONSTRUCTION DOCUMENTS

SUBMITTALS		
REV	DATE	DESCRIPTION
A	06/29/21	ISSUED FOR REVIEW
0	06/30/21	ISSUED FOR CONSTRUCTION

A&E PROJECT NUMBER
3009-25555-C

DISH Wireless L.L.C.
PROJECT INFORMATION
DNDEN00043A
COLORADO SPRINGS
4490 EAST BLANEY RD
PEYTON, CO 80831

SHEET TITLE
COMPOUND, ACCESS &
ENLARGED SITE PLANS

SHEET NUMBER

A-1