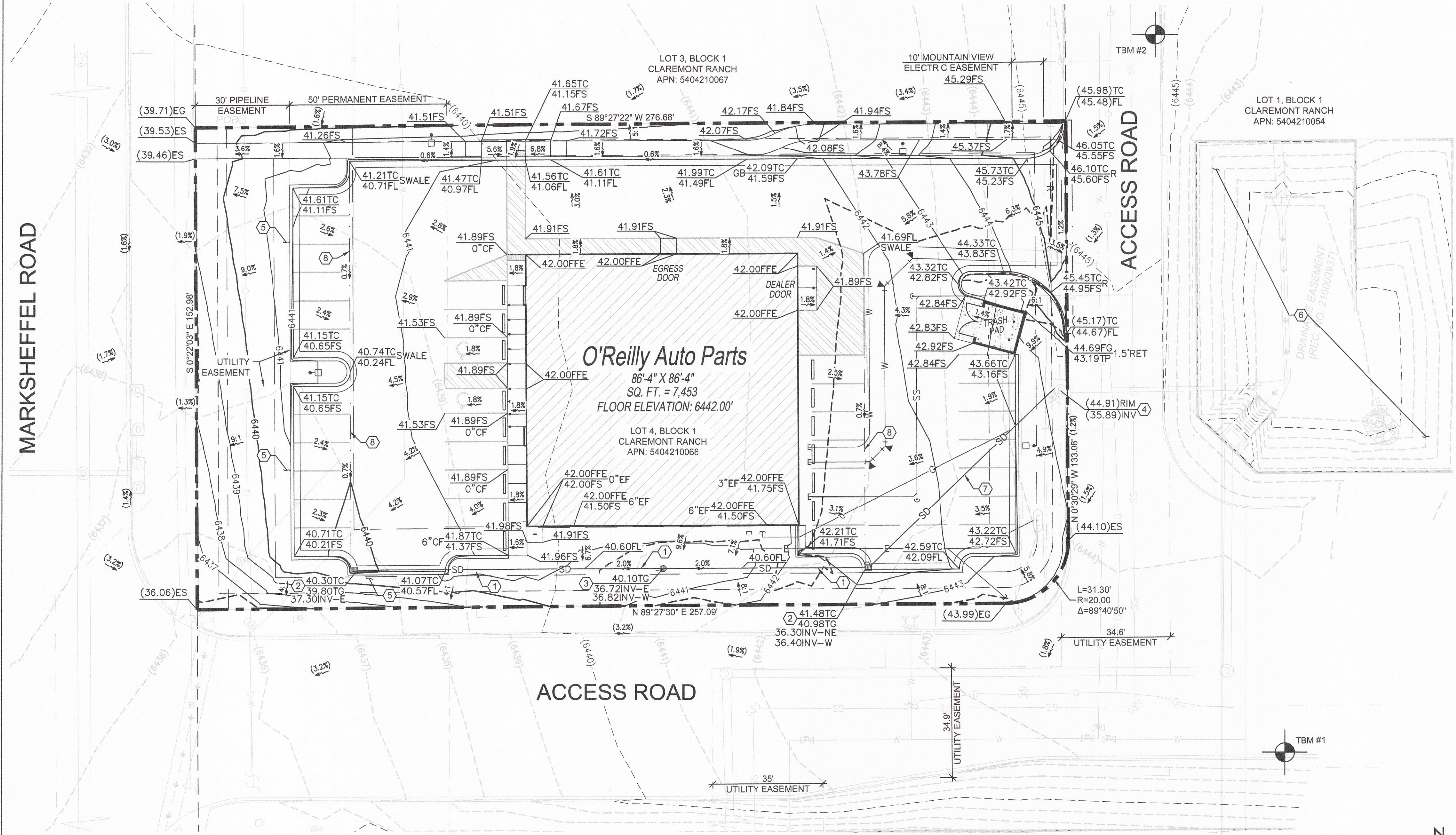


# O'REILLY AUTO PARTS STORE GRADING AND EROSION CONTROL PLAN EL PASO COUNTY, COLORADO



**1 SITE GRADING PLAN**  
C1.1 SCALE: 1" = 20'-0"

**OWNER'S STATEMENT:**  
I, THE OWNER/DEVELOPER HAVE READ AND WILL COMPLY WITH THE REQUIREMENTS OF THE GRADING AND EROSION CONTROL PLAN.  
*[Signature]*  
OWNER SIGNATURE DATE: 6-5-2020

**ENGINEER'S STATEMENT:**  
THIS GRADING AND EROSION CONTROL PLAN WAS PREPARED UNDER MY DIRECTION AND SUPERVISION AND IS CORRECT TO THE BEST OF MY KNOWLEDGE AND BELIEF. SAID PLAN HAS BEEN PREPARED ACCORDING TO THE CRITERIA ESTABLISHED BY THE COUNTY FOR GRADING AND EROSION CONTROL PLANS. I ACCEPT RESPONSIBILITY FOR ANY LIABILITY CAUSED BY ANY NEGLIGENT ACTS, ERRORS OR OMISSIONS ON MY PART IN PREPARING THIS REPORT.  
*[Signature]*  
ENGINEER OF RECORD SIGNATURE DATE: 5-27-2020

EL PASO COUNTY:  
COUNTY PLAN REVIEW IS PROVIDED ONLY FOR GENERAL CONFORMANCE WITH COUNTY DESIGN CRITERIA. THE COUNTY IS NOT RESPONSIBLE FOR THE ACCURACY AND ADEQUACY OF THE DESIGN, DIMENSIONS, AND/OR ELEVATIONS WHICH SHALL BE CONFIRMED AT THE JOB SITE. THE COUNTY THROUGH THE APPROVAL OF THIS DOCUMENT ASSUMES NO RESPONSIBILITY FOR COMPLETENESS AND/OR ACCURACY OF THIS DOCUMENT. FILED IN ACCORDANCE WITH THE REQUIREMENTS OF THE EL PASO COUNTY LAND DEVELOPMENT CODE, DRAINAGE CRITERIA, AND ENGINEERING CRITERIA MANUAL AS AMENDED.

IN ACCORDANCE WITH ECM SECTION 1.12, THESE CONSTRUCTION DOCUMENTS WILL BE VALID FOR CONSTRUCTION FOR A PERIOD OF 2 YEARS FROM THE DATE SIGNED BY THE EL PASO COUNTY ENGINEER. IF CONSTRUCTION HAS NOT STARTED WITHIN THOSE 2 YEARS, THE PLANS WILL NEED TO BE RESUBMITTED FOR APPROVAL, INCLUDING PAYMENT OF REVIEW FEES AT THE PLANNING AND COMMUNITY DEVELOPMENT DIRECTOR'S DISCRETION.

COUNTY PROJECT ENGINEER SIGNATURE DATE

## GENERAL NOTES

- REFER TO PROJECT MANUAL FOR ADDITIONAL REQUIREMENTS.
- SITE CONDITIONS BASED UPON SURVEY PROVIDED BY OWNER. FIELD VERIFY EXISTING CONDITIONS BY DETAILED INSPECTION PRIOR TO SUBMITTING BID AND BEGINNING CONSTRUCTION. NOTIFY ENGINEER IF EXISTING CONDITIONS DEVIATE SUBSTANTIALLY FROM THOSE INDICATED HEREIN.
- FIELD VERIFY SANITARY SEWER SERVICE CONNECTION INVERT PRIOR TO ESTABLISHING FINAL FINISH FLOOR ELEVATION. NOTIFY ENGINEER IF EXISTING CONDITIONS REQUIRE REVISED FINISH FLOOR ELEVATION TO PROVIDE PROPER DRAINAGE.
- ACCESSIBLE PARKING AREAS TO SLOPE 2% MAXIMUM IN ALL DIRECTIONS. DESIGNATED ACCESSIBLE ROUTE TO SLOPE 5% MAXIMUM IN DIRECTION OF TRAVEL WITH 2% MAXIMUM CROSS SLOPE.
- THE PROPOSED DEVELOPMENT DISTURBS LESS THAN ONE ACRE.

## SITE EXCAVATION REQUIREMENTS

- A A GEOTECHNICAL ANALYSIS HAS BEEN PERFORMED ON THIS SITE. REFER TO PROJECT MANUAL.
- B FOLLOW GEOTECHNICAL ANALYSIS RECOMMENDATIONS FOR SITE EXCAVATION REQUIREMENTS.
- C REFER TO STRUCTURAL DRAWINGS FOR BUILDING EXCAVATION REQUIREMENTS.

## ADA NOTE

- ALL ACCESSIBLE PATHS OF TRAVEL ARE TO ABIDE BY THE FOLLOWING PARAMETERS:
- CROSS-SLOPE NOT TO EXCEED 2%
  - LONGITUDINAL SLOPE NOT TO EXCEED 5%
  - LONGITUDINAL RAMP SLOPE NOT TO EXCEED 8.33%
  - RAMP LANDINGS NOT TO EXCEED 2% (LANDING PLACEMENT PER RAMP DETAILS)
  - PATHWAYS EXCEEDING THESE STANDARDS WILL BE REPLACED AT THE CONTRACTOR'S EXPENSE

THE PARTIES RESPONSIBLE FOR THIS PLAN HAVE FAMILIARIZED THEMSELVES WITH ALL CURRENT ACCESSIBILITY CRITERIA AND SPECIFICATIONS AND THE PROPOSED PLAN REFLECTS ALL SITE ELEMENTS REQUIRED BY THE APPLICABLE ADA DESIGN STANDARDS AND GUIDELINES AS PUBLISHED BY THE UNITED STATES DEPARTMENT OF JUSTICE. APPROVAL OF THIS PLAN BY EL PASO COUNTY DOES NOT ASSURE COMPLIANCE WITH THE ADA OR ANY REGULATIONS OR GUIDELINES ENACTED OR PROMULGATED UNDER OR WITH RESPECT TO SUCH LAWS

## BASIS OF BEARING

BEARINGS ARE BASED ON GRID CENTRAL FOR COLORADO COORDINATE SYSTEM, CENTRAL ZONE, NAD83. LATITUDE = 38°51'57.09193", LONGITUDE = 10°40'53.61704", CONVERGENCE ANGLE = 0°11'59".

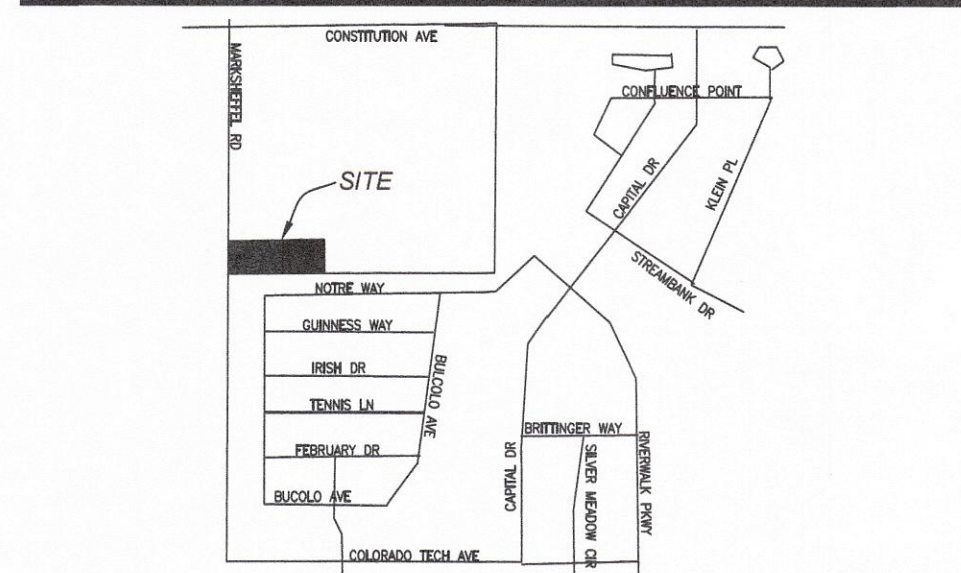
## KEY NOTES

- 1) 12" HDPE STORM DRAIN PIPE AT 0.5% SLOPE.
- 2) 2' X 2' NYLOPLAST CURB INLET WITH STANDARD GRATE AND 24" BASIN.
- 3) 24" AREA INLET WITH 24" NYLOPLAST DOME GRATE.
- 4) CONNECT TO EXISTING STORM DRAIN MANHOLE.
- 5) 2' BENCH AT 2%.
- 6) EXISTING WATER QUALITY AND DETENTION POND.
- 7) 15" HDPE STORM DRAIN PIPE AT 0.5% SLOPE.
- 8) PROPOSED SWALE IN CONCRETE.

## BENCHMARK

TEMPORARY BENCHMARK #1: ELEVATION = 6443.54', SET MAG NAIL, N:1377025.58, E:3233108.44.  
TEMPORARY BENCHMARK #2: ELEVATION = 6445.80', SET MAG NAIL, N:1377253.45, E:3233066.72.  
VERTICAL DATUM: BASED ON OPUS SOLUTION DATED 4/30/2019, NAVD88.  
GRADE FLAG ELEVATIONS SHOWN HEREON ARE TRUNCATED BY 6400 FEET.

## VICINITY MAP



## SYMBOLS LEGEND

NOTE: REFER TO SURVEY FOR EXISTING CONDITIONS SYMBOLS LEGEND.

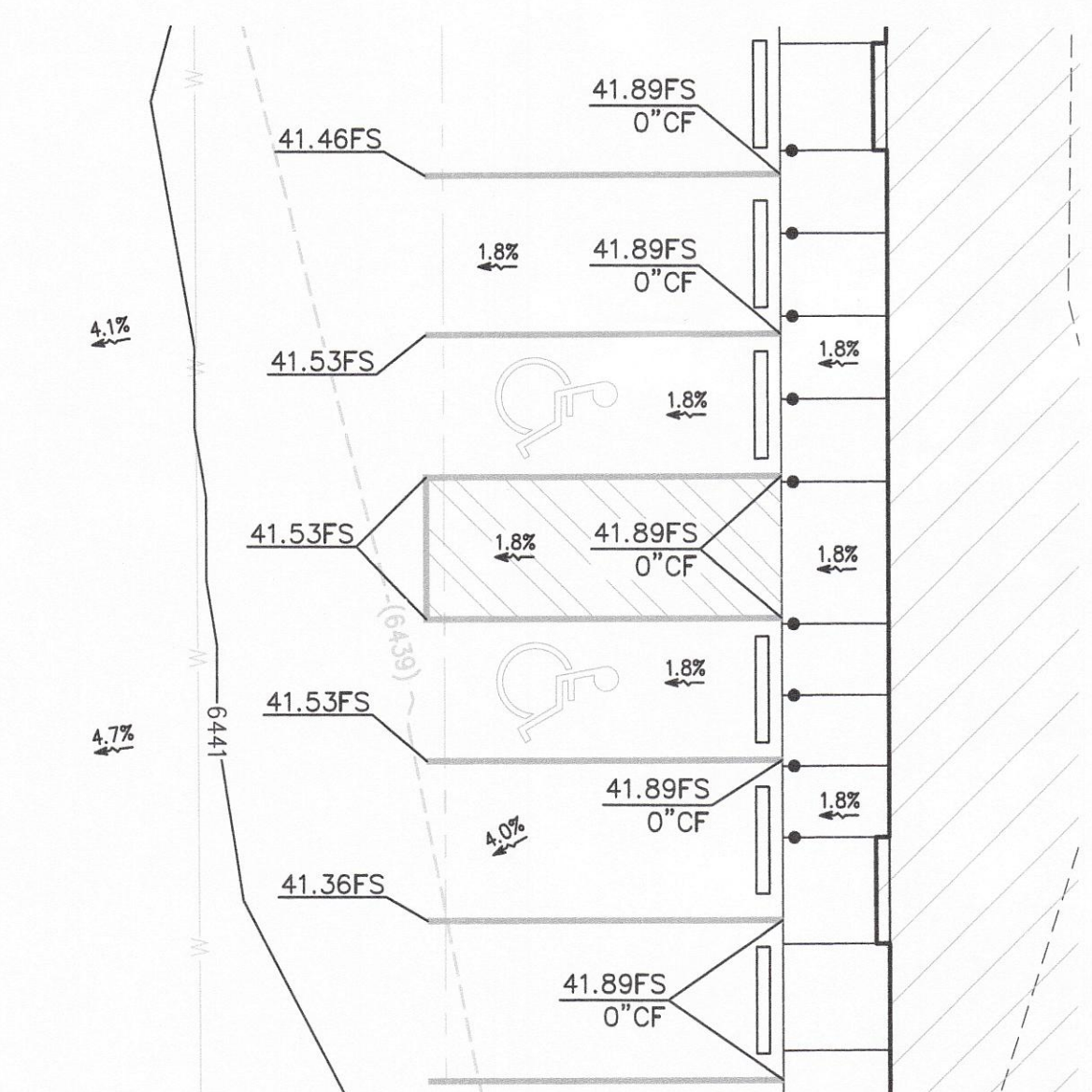
(300.00)	EXISTING ELEV.
300.00	PROPOSED ELEV.
(4.300)	EXISTING CONTOURS
4300	PROPOSED CONTOURS
1.5%	PROPOSED FLOW ARROW
(1.5%)	EXISTING FLOW ARROW
	ADJACENT PROPERTY LINE/ RIGHT OF WAY
	EASEMENT LINE
	BUILDING/LANDSCAPE SETBACK LINE
	PROPOSED SAWCUT
	PROPERTY LINE/ RIGHT OF WAY
	NEW BUILDING CONSTRUCTION
	CUT/FILL LINE
	NEW CONCRETE PARKING BLOCK
	PROPOSED LIGHT POST
	PROPOSED SWALE

## GRADING & EROSION CONTROL SHEET INDEX

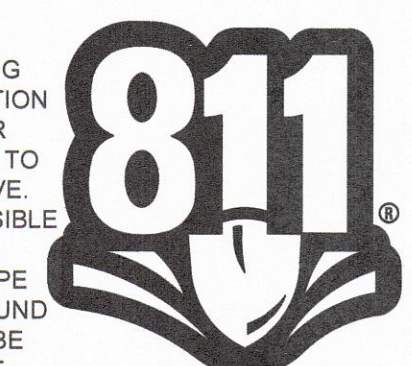
- C1.1 - SITE GRADING PLAN
- C1.2 - SITE EROSION CONTROL PLAN
- C1.3 - GENERAL NOTES
- C1.4 - BMP DETAILS

## 2 ADA PARKING DETAIL

C1.1 SCALE: 1" = 10'-0"



**CAUTION:**  
INFORMATION ON THIS DRAWING CONCERNING TYPE AND LOCATION OF UNDERGROUND AND OTHER UTILITIES IS NOT GUARANTEED TO BE ACCURATE OR ALL INCLUSIVE. THE CONTRACTOR IS RESPONSIBLE FOR MAKING HIS OWN DETERMINATION AS TO THE TYPE AND LOCATION OF UNDERGROUND AND OTHER UTILITIES AS MAY BE NECESSARY TO AVOID DAMAGE THERETO.



PREPARED UNDER THE SUPERVISION OF TAIT & ASSOCIATES, INC.

6163 East County Road 16  
Loveland, CO 80537  
P: 970/613/1447 F: 970/613/1897  
www.tait.com

Los Angeles, Boise, Sacramento, Rancho Cucamonga, Denver, Dallas

Since 1984

TAIT

41703  
PROFESSIONAL ENGINEER  
COLORADO LICENSED

ALEX HOMER, PE #1703

CRAIG A. SCHNEIDER, AIA  
ARCHITECT

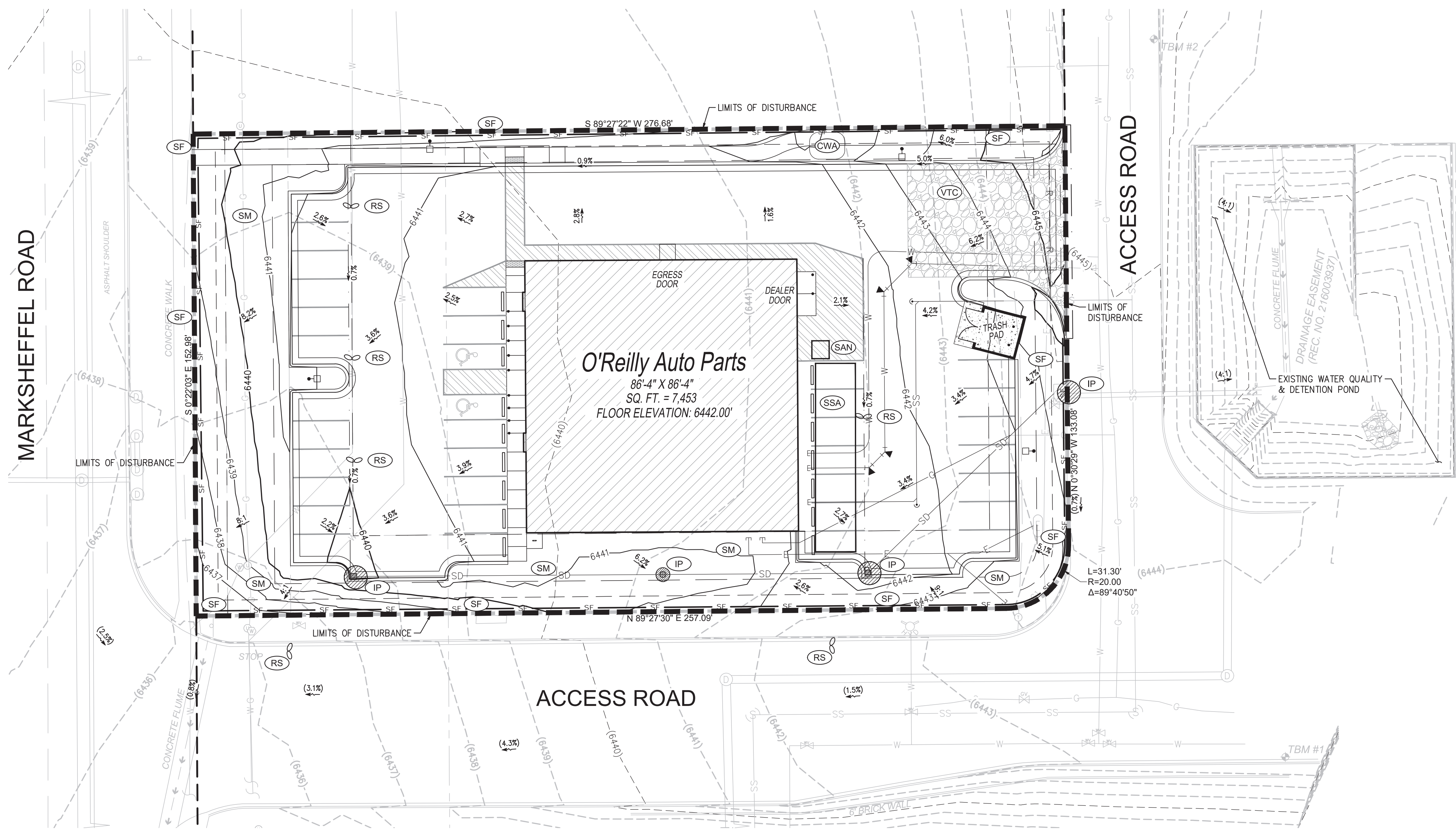
1736 East Sunshine, Suite 417  
Springfield, Missouri 65804  
e-mail: architec@esteryschneider.com  
417.862.0558  
Fax: 417.862.3265

PROJECT:  
NEW O'REILLY AUTO PARTS STORE  
N. MARKSHEFFEL ROAD  
COLORADO SPRINGS, CO #11  
SITE GRADING PLAN

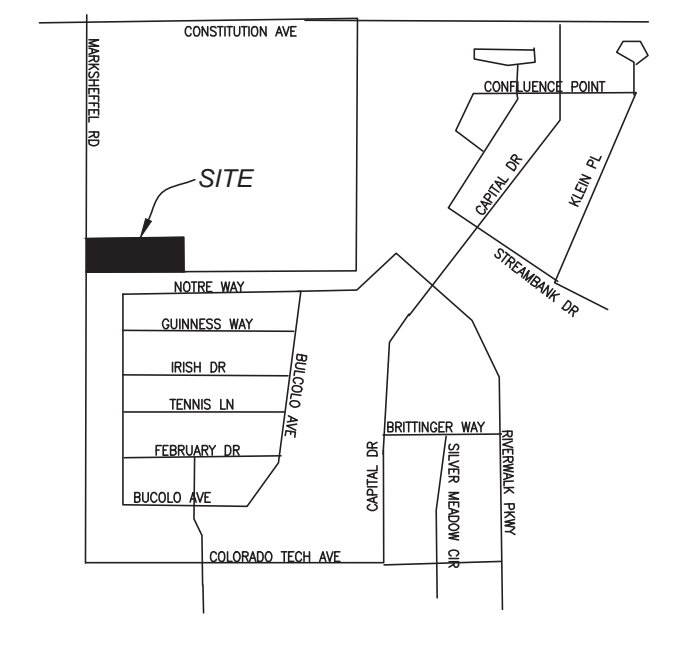
O'Reilly AUTO PARTS  
CORPORATE OFFICES  
233 SOUTH PATTERSON  
SPRINGFIELD, MISSOURI 65802  
(417) 862-2674 TELEPHONE

COMM #	4369
DATE:	10-11-19
REVISION DATE:	02-26-2020
	05-28-2020





VICINITY MAP



CONSTRUCTION EGRESS NOTES

- CONSTRUCTION EGRESS SHALL BE 25" MINIMUM WIDTH AND 30" MINIMUM LENGTH AND 6" MIN THICKNESS OF STONE (1.5"-3.5") COARSE AGGREGATE WITH GEOTEXTILE UNDERLINER. REFER TO CITY OR STATE FOR ANY ADDITIONAL REQUIREMENTS.
- THE EXIT SHALL BE MAINTAINED IN A CONDITION WHICH WILL PREVENT TRACKING OR FLOW OF MUD ONTO PUBLIC RIGHT-OF-WAY. THIS MAY REQUIRE PERIODIC TOP DRESSING WITH 1.5-3.5 INCH STONE, AS CONDITIONS DEMAND, AND REPAIR AND/OR CLEAN OUT OF ANY STRUCTURE USED TO TRAP SEDIMENT. ALL MATERIALS SPILLED, DROPPED, WASHED, OR TRACKED FROM VEHICLES OR SITE ONTO ROADWAYS OR INTO STORM DRAINS MUST BE REMOVED IMMEDIATELY.
- WHEELS MUST BE CLEANED TO REMOVE MUD PRIOR TO ENTRANCE ONTO PUBLIC RIGHT-OF-WAY. WHEN WASHING IS REQUIRED, IT SHALL BE DONE ON AN AREA WITH CRUSHED STONE WHICH DRAINS INTO AN APPROVED SEDIMENT TRAP OR SEDIMENT BASIN LOCATED PER CITY OR STATE REQUIREMENTS.

BENCHMARK

TEMPORARY BENCHMARK #1: ELEVATION = 6443.54', SET MAG NAIL, N:1377025.58, E:3233108.44.  
 TEMPORARY BENCHMARK #2: ELEVATION = 6445.80', SET MAG NAIL, N:1377253.45, E:3233066.72.  
 VERTICAL DATUM: BASED ON OPUS SOLUTION DATED 4/30/2019, NAVD88.  
 GRADE FLAG ELEVATIONS SHOWN HEREON ARE TRUNCATED BY 6400 FEET.

BASIS OF BEARING

BEARINGS ARE BASED ON GRID CENTRAL FOR COLORADO COORDINATE SYSTEM, CENTRAL ZONE, NAD83. LATITUDE = 38°51'57.09193", LONGITUDE = 10°40'53.61704", CONVERGENCE ANGLE = 0°11'59".

SITE EXCAVATION REQUIREMENTS

A GEOTECHNICAL ANALYSIS HAS BEEN PERFORMED ON THIS SITE. REFER TO PROJECT MANUAL.  
 FOLLOW GEOTECHNICAL ANALYSIS RECOMMENDATIONS FOR SITE EXCAVATION REQUIREMENTS.  
 REFER TO STRUCTURAL DRAWINGS FOR BUILDING EXCAVATION REQUIREMENTS.

1 SITE EROSION CONTROL PLAN  
 C1.2 SCALE: 1" = 20'-0"

GENERAL PHASING NOTES

- PHASE 1 (PRE-CONSTRUCTION)
- INSTALLATION OF EROSION CONTROL SILT FENCE.
  - DEMOLITION OF EXISTING SITE IMPROVEMENTS.
  - SILT FENCE PLACED IN AREAS WITH POTENTIAL TO RELEASE SEDIMENT OFFSITE.
  - VEHICLE TRACKING CONTROL - SANITARY FACILITIES
- PHASE 2 (DURING GRADING, AND PAVING)
- INSTALLATION OF ALL STORM WATER DRAINAGE IMPROVEMENTS.
  - ROUGH GRADING.
  - CONSTRUCTION OF NEW SITE IMPROVEMENTS.
  - FINAL GRADING.
  - CONCRETE WASHOUT AREA PRIOR TO ANY CONCRETE WORK
  - SEEDING AND MULCHING
  - STOCKPILES OVER 7-DAYS IDLE
- PHASE 3 (POST PAVING)
- PLACEMENT OF FINAL LANDSCAPING ITEMS AND SOD.
  - REMOVAL OF EROSION CONTROL FENCE.
  - FINAL LANDSCAPE INSTALLATION PER LANDSCAPE PLANS
  - REMOVE REMAINING EROSION CONTROL BMP'S ONCE STABILIZED

EROSION CONTROL SYMBOLS

TITLE	KEY	SYMBOL
SILT FENCE	SF	[Symbol]
VEHICLE TRACKING CONTROL	VTC	[Symbol]
CONCRETE WASHOUT AREA	CWA	[Symbol]
SANITARY FACILITIES	SAN	[Symbol]
STABILIZED STAGING AREA MATERIAL/EQUIP. STORAGE	SSA	[Symbol]
SEEDING AND MULCHING	SM	[Symbol]
ROCK SOCK/CURB SOCK	RS	[Symbol]
INLET PROTECTION	IP	[Symbol]

SYMBOLS LEGEND

NOTE: REFER TO SURVEY FOR EXISTING CONDITIONS SYMBOLS LEGEND.

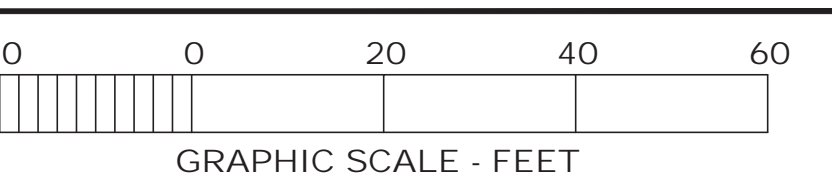
(1000)	EXISTING CONTOURS
-1000-	PROPOSED CONTOURS
1.5%	PROPOSED FLOW ARROW
(1.5%)	EXISTING FLOW ARROW
[Symbol]	PROPERTY LINE
[Symbol]	NEW BUILDING CONSTRUCTION
[Symbol]	ASPHALT PATCH
[Symbol]	NEW CONCRETE PARKING BLOCK
[Symbol]	PROPOSED SWALE IN PAVEMENT/LANDSCAPE
[Symbol]	PROPOSED LIGHT POST
[Symbol]	LIMITS OF CONSTRUCTION AND DISTURBANCE

GENERAL NOTES

- THERE WILL NOT BE ANY ASPHALT/CONCRETE BATCH PLANTS ONSITE.
- THERE ARE NO STREAMS, SPRINGS, OR WETLAND, OR OTHER SURFACE WATERS ON OR NEAR THE SITE.

EXISTING VEGETATION NOTE

THE EXISTING SITE IS RELATIVELY UNDEVELOPED. THERE IS LIGHT VEGETATION AND WEED GROWTH ONSITE. THE GROUND COVER IS ABOUT 50%. THIS IS AN ESTIMATION FROM THE SITE PHOTOS PROVIDED WITH THE SURVEY. THE AREA AROUND THE SITE HAS UNDERGONE RELATIVELY RECENT DEVELOPMENT AND MASS GRADING OPERATIONS ARE KNOWN TO HAVE OCCURRED IN THE AREA. REVIEW OF HISTORICAL AERIAL IMAGERY APPEARS TO SHOW MASS GRADING OPERATIONS OCCURRING BETWEEN 2015 AND 2017.



PREPARED UNDER THE SUPERVISION OF TAIT & ASSOCIATES, INC.

6163 East County Road 16  
 Loveland, CO 80537  
 p: 970.613.1447 f: 970.613.1897  
 www.tait.com

Los Angeles, Boise, Sacramento, Denver, Dallas, Rancho Cucamonga

Since 1984

TAIT ENGINEERS ARCHITECTS  
 41703

ALEX.HOME: FE 41703

**CRAIG A. SCNEIDER, AIA**  
**ARCHITECT**  
 1736 East Sunshine, Suite 417  
 Springfield, Missouri 65804  
 417.862.0558  
 Fax: 417.862.3265  
 e-mail: architect@esterlyscneider.com

**PROJECT:**  
**NEW O'REILLY AUTO PARTS STORE**  
**N. MARKSHEFFEL ROAD**  
**COLORADO SPRINGS, CO #11**  
**SITE EROSION CONTROL PLAN**

**O'Reilly AUTO PARTS**  
 CORPORATE OFFICES  
 233 SOUTH PATERSON  
 SPRINGFIELD, MISSOURI 65802  
 (417) 862-2674 TELEPHONE

COMM #	4369
DATE:	10-11-19
REVISION	
DATE:	02-26-2020
	05-28-2020

**811**  
 Know what's below  
 Call before you dig.

EL PASO COUNTY REFERENCE NUMBER: PPR-20-002



# STANDARD NOTES FOR EL PASO COUNTY GRADING AND EROSION CONTROL PLANS

1. STORMWATER DISCHARGES FROM CONSTRUCTION SITES SHALL NOT CAUSE OR THREATEN TO CAUSE POLLUTION, CONTAMINATION, OR DEGRADATION OF STATE WATERS. ALL WORK AND EARTH DISTURBANCE SHALL BE DONE IN A MANNER THAT MINIMIZES POLLUTION OF ANY ON-SITE OR OFF-SITE WATERS, INCLUDING WETLANDS.
2. NOTWITHSTANDING ANYTHING DEPICTED IN THESE PLANS IN WORDS OR GRAPHIC REPRESENTATION, ALL DESIGN AND CONSTRUCTION RELATED TO ROADS, STORM DRAINAGE AND EROSION CONTROL SHALL CONFORM TO THE STANDARDS AND REQUIREMENTS OF THE MOST RECENT VERSION OF THE RELEVANT ADOPTED EL PASO COUNTY STANDARDS, INCLUDING THE LAND DEVELOPMENT CODE, THE ENGINEERING CRITERIA MANUAL, THE DRAINAGE CRITERIA MANUAL, AND THE DRAINAGE CRITERIA MANUAL VOLUME 2. ANY DEVIATIONS FROM REGULATIONS AND STANDARDS MUST BE REQUESTED, AND APPROVED, IN WRITING.
3. A SEPARATE STORMWATER MANAGEMENT PLAN (SMWP) FOR THIS PROJECT SHALL BE COMPLETED AND AN EROSION AND STORMWATER QUALITY CONTROL PERMIT (ESQCP) ISSUED PRIOR TO COMMENCING CONSTRUCTION. MANAGEMENT OF THE SWMP DURING CONSTRUCTION IS THE RESPONSIBILITY OF THE DESIGNATED QUALIFIED STORMWATER MANAGER OR CERTIFIED EROSION CONTROL INSPECTOR. THE SWMP SHALL BE LOCATED ON SITE AT ALL TIMES DURING CONSTRUCTION AND SHALL BE KEPT UP TO DATE WITH WORK PROGRESS AND CHANGES IN THE FIELD.
4. ONCE THE ESQCP IS APPROVED AND A "NOTICE TO PROCEED" HAS BEEN ISSUED, THE CONTRACTOR MAY INSTALL THE INITIAL STAGE EROSION AND SEDIMENT CONTROL MEASURES AS INDICATED ON THE APPROVED GEC. A PRECONSTRUCTION MEETING BETWEEN THE CONTRACTOR, ENGINEER, AND EL PASO COUNTY WILL BE HELD PRIOR TO ANY CONSTRUCTION. IT IS THE RESPONSIBILITY OF THE APPLICANT TO COORDINATE THE MEETING TIME AND PLACE WITH COUNTY STAFF.
5. CONTROL MEASURES MUST BE INSTALLED PRIOR TO COMMENCEMENT OF ACTIVITIES THAT COULD CONTRIBUTE POLLUTANTS TO STORMWATER. CONTROL MEASURES FOR ALL SLOPES, CHANNELS, DITCHES, AND DISTURBED LAND AREAS SHALL BE INSTALLED IMMEDIATELY UPON COMPLETION OF THE DISTURBANCE.
6. ALL TEMPORARY SEDIMENT AND EROSION CONTROL MEASURES SHALL BE MAINTAINED AND REMAIN IN EFFECTIVE OPERATING CONDITION UNTIL PERMANENT SOIL EROSION CONTROL MEASURES ARE IMPLEMENTED AND FINAL STABILIZATION IS ESTABLISHED. ALL PERSONS ENGAGED IN LAND DISTURBANCE ACTIVITIES SHALL ASSESS THE ADEQUACY OF CONTROL MEASURES AT THE SITE AND IDENTIFY IF CHANGES TO THOSE CONTROL MEASURES ARE NEEDED TO ENSURE THE CONTINUED EFFECTIVE PERFORMANCE OF THE CONTROL MEASURES. ALL CHANGES TO TEMPORARY SEDIMENT AND EROSION CONTROL MEASURES MUST BE INCORPORATED INTO THE STORMWATER MANAGEMENT PLAN.
7. TEMPORARY STABILIZATION SHALL BE IMPLEMENTED ON DISTURBED AREAS AND STOCKPILES WHERE GROUND DISTURBING CONSTRUCTION ACTIVITY HAS PERMANENTLY CEASED OR TEMPORARILY CEASED FOR LONGER THAN 14 DAYS.
8. FINAL STABILIZATION MUST BE IMPLEMENTED AT ALL APPLICABLE CONSTRUCTION SITES. FINAL STABILIZATION IS ACHIEVED WHEN ALL GROUND DISTURBING ACTIVITIES ARE COMPLETE AND ALL DISTURBED AREAS EITHER HAVE A UNIFORM VEGETATIVE COVER WITH INDIVIDUAL PLANT DENSITY OF 70 PERCENT OF PRE-DISTURBANCE LEVELS ESTABLISHED OR EQUIVALENT PERMANENT ALTERNATIVE STABILIZATION METHOD IS IMPLEMENTED. ALL TEMPORARY SEDIMENT AND EROSION CONTROL MEASURES SHALL BE REMOVED UPON FINAL STABILIZATION AND BEFORE PERMIT CLOSURE.
9. ALL PERMANENT STORMWATER MANAGEMENT FACILITIES SHALL BE INSTALLED AS DESIGNED IN THE APPROVED PLANS. ANY PROPOSED CHANGES THAT EFFECT THE DESIGN OR FUNCTION OF PERMANENT STORMWATER MANAGEMENT STRUCTURES MUST BE APPROVED BY THE ECM ADMINISTRATOR PRIOR TO IMPLEMENTATION.
10. EARTH DISTURBANCES SHALL BE CONDUCTED IN SUCH A MANNER SO AS TO EFFECTIVELY MINIMIZE ACCELERATED SOIL EROSION AND RESULTING SEDIMENTATION. ALL DISTURBANCES SHALL BE DESIGNED, CONSTRUCTED, AND COMPLETED SO THAT THE EXPOSED AREA OF ANY DISTURBED LAND SHALL BE LIMITED TO THE SHORTEST PRACTICAL PERIOD OF TIME. PRE-EXISTING VEGETATION SHALL BE PROTECTED AND MAINTAINED WITHIN 50 HORIZONTAL FEET OF A WATERS OF THE STATE UNLESS SHOWN TO BE INFEASIBLE AND SPECIFICALLY REQUESTED AND APPROVED.
11. COMPACTION OF SOIL MUST BE PREVENTED IN AREAS DESIGNATED FOR INFILTRATION CONTROL MEASURES OR WHERE FINAL STABILIZATION WILL BE ACHIEVED BY VEGETATIVE COVER. AREAS DESIGNATED FOR INFILTRATION CONTROL MEASURES SHALL ALSO BE PROTECTED FROM SEDIMENTATION DURING CONSTRUCTION UNTIL FINAL STABILIZATION IS ACHIEVED. IF COMPACTION PREVENTION IS NOT FEASIBLE DUE TO SITE CONSTRAINTS, ALL AREAS DESIGNATED FOR INFILTRATION AND VEGETATION CONTROL MEASURES MUST BE LOOSENEED PRIOR TO INSTALLATION OF THE CONTROL MEASURE(S).
12. ANY TEMPORARY OR PERMANENT FACILITY DESIGNED AND CONSTRUCTED FOR THE CONVEYANCE OF STORMWATER AROUND, THROUGH, OR FROM THE EARTH DISTURBANCE AREA SHALL BE A STABILIZED CONVEYANCE DESIGNED TO MINIMIZE EROSION AND THE DISCHARGE OF SEDIMENT OFF SITE.
13. CONCRETE WASH WATER SHALL BE CONTAINED AND DISPOSED OF IN ACCORDANCE WITH THE SWMP. NO WASH WATER SHALL BE DISCHARGED TO OR ALLOWED TO ENTER STATE WATERS, INCLUDING ANY SURFACE OR SUBSURFACE STORM DRAINAGE SYSTEM OR FACILITIES. CONCRETE WASHOUTS SHALL NOT BE LOCATED IN AN AREA WHERE SHALLOW GROUNDWATER MAY BE PRESENT, OR WITHIN 50 FEET OF A SURFACE WATER BODY, CREEK OR STREAM.
14. DURING DEWATERING OPERATIONS OF UNCONTAMINATED GROUND WATER MAY BE DISCHARGED ON SITE, BUT SHALL NOT LEAVE THE SITE IN THE FORM OF SURFACE RUNOFF UNLESS AN APPROVED STATE DEWATERING PERMIT IS IN PLACE.

15. EROSION CONTROL BLANKETTING OR OTHER PROTECTIVE COVERING SHALL BE USED ON SLOPES STEEPER THAN 3:1.
16. CONTRACTOR SHALL BE RESPONSIBLE FOR THE REMOVAL OF ALL WASTES FROM THE CONSTRUCTION SITE FOR DISPOSAL IN ACCORDANCE WITH LOCAL AND STATE REGULATORY REQUIREMENTS. NO CONSTRUCTION DEBRIS, TREE SLASH, BUILDING MATERIAL WASTES OR UNUSED BUILDING MATERIALS SHALL BE BURIED, DUMPED, OR DISCHARGED AT THE SITE.
17. WASTE MATERIALS SHALL NOT BE TEMPORARILY PLACED OR STORED IN THE STREET, ALLEY, OR OTHER PUBLIC WAY, UNLESS IN ACCORDANCE WITH AN APPROVED TRAFFIC CONTROL PLAN. CONTROL MEASURES MAY BE REQUIRED BY EL PASO COUNTY ENGINEERING IF DEEMED NECESSARY, BASED ON SPECIFIC CONDITIONS AND CIRCUMSTANCES.
18. TRACKING OF SOILS AND CONSTRUCTION DEBRIS OFF-SITE SHALL BE MINIMIZED. MATERIALS TRACKED OFF-SITE SHALL BE CLEANED UP AND PROPERLY DISPOSED OF IMMEDIATELY.
19. THE OWNER/DEVELOPER SHALL BE RESPONSIBLE FOR THE REMOVAL OF ALL CONSTRUCTION DEBRIS, DIRT, TRASH, ROCK, SEDIMENT, SOIL, AND SAND THAT MAY ACCUMULATE IN ROADS, STORM DRAINS AND OTHER DRAINAGE CONVEYANCE SYSTEMS AND STORMWATER APPURTENANCES AS A RESULT OF SITE DEVELOPMENT.
20. THE QUANTITY OF MATERIALS STORED ON THE PROJECT SITE SHALL BE LIMITED, AS MUCH AS PRACTICAL, TO THAT QUANTITY REQUIRED TO PERFORM THE WORK IN AN ORDERLY SEQUENCE. ALL MATERIALS STORED ON-SITE SHALL BE STORED IN A NEAT, ORDERLY MANNER, IN THEIR ORIGINAL CONTAINERS, WITH ORIGINAL MANUFACTURER'S LABELS.
21. NO CHEMICAL(S) HAVING THE POTENTIAL TO BE RELEASED IN STORMWATER ARE TO BE STORED OR USED ONSITE UNLESS PERMISSION FOR THE USE OF SUCH CHEMICAL(S) IS GRANTED IN WRITING BY THE ECM ADMINISTRATOR. IN GRANTING APPROVAL FOR THE USE OF SUCH CHEMICAL(S), SPECIAL CONDITIONS AND MONITORING MAY BE REQUIRED.
22. BULK STORAGE OF ALLOWED PETROLEUM PRODUCTS OR OTHER ALLOWED LIQUID CHEMICALS IN EXCESS OF 55 GALLONS SHALL REQUIRE ADEQUATE SECONDARY CONTAINMENT PROTECTION TO CONTAIN ALL SPILLS ONSITE AND TO PREVENT ANY SPILLED MATERIALS FROM ENTERING STATE WATERS, ANY SURFACE OR SUBSURFACE STORM DRAINAGE SYSTEM OR OTHER FACILITIES.
23. NO PERSON SHALL CAUSE THE IMPEDIMENT OF STORMWATER FLOW IN THE CURB AND GUTTER OR DITCH EXCEPT WITH APPROVED SEDIMENT CONTROL MEASURES.
24. OWNER/DEVELOPER AND THEIR AGENTS SHALL COMPLY WITH THE "COLORADO WATER QUALITY CONTROL ACT" (TITLE 25, ARTICLE 8, CRS), AND THE "CLEAN WATER ACT" (33 USC 1344), IN ADDITION TO THE REQUIREMENTS OF THE LAND DEVELOPMENT CODE, DCM VOLUME II AND THE ECM APPENDIX I. ALL APPROPRIATE PERMITS MUST BE OBTAINED BY THE CONTRACTOR PRIOR TO CONSTRUCTION (1041, NPDES, FLOODPLAIN, 404, FUGITIVE DUST, ETC.). IN THE EVENT OF CONFLICTS BETWEEN THESE REQUIREMENTS AND OTHER LAWS, RULES, OR REGULATIONS OF OTHER FEDERAL, STATE, LOCAL, OR COUNTY AGENCIES, THE MOST RESTRICTIVE LAWS, RULES, OR REGULATIONS SHALL APPLY.
25. ALL CONSTRUCTION TRAFFIC MUST ENTER/EXIT THE SITE ONLY AT APPROVED CONSTRUCTION ACCESS POINTS.
26. PRIOR TO CONSTRUCTION THE PERMITTEE SHALL VERIFY THE LOCATION OF EXISTING UTILITIES.
27. A WATER SOURCE SHALL BE AVAILABLE ON SITE DURING EARTHWORK OPERATIONS AND SHALL BE UTILIZED AS REQUIRED TO MINIMIZE DUST FROM EARTHWORK EQUIPMENT AND WIND.
28. THE SOILS REPORT FOR THIS SITE HAS BEEN PREPARED BY TERRACON AND SHALL BE CONSIDERED A PART OF THESE PLANS.
29. AT LEAST TEN (10) DAYS PRIOR TO THE ANTICIPATED START OF CONSTRUCTION, FOR PROJECTS THAT WILL DISTURB ONE (1) ACRE OR MORE, THE OWNER OR OPERATOR OF CONSTRUCTION ACTIVITY SHALL SUBMIT A PERMIT APPLICATION FOR STORMWATER DISCHARGE TO THE COLORADO DEPARTMENT OF PUBLIC HEALTH AND ENVIRONMENT, WATER QUALITY DIVISION. THE APPLICATION CONTAINS CERTIFICATION OF COMPLETION OF A STORMWATER MANAGEMENT PLAN (SWMP), OF WHICH THIS GRADING AND EROSION CONTROL PLAN MAY BE A PART. FOR INFORMATION OR APPLICATION MATERIALS CONTACT:

COLORADO DEPARTMENT OF PUBLIC HEALTH AND ENVIRONMENT  
 WATER QUALITY CONTROL DIVISION  
 WOOD - PERMITS  
 4300 CHERRY CREEK DRIVE SOUTH  
 DENVER, CO 80246-1530  
 ATTN: PERMITS UNIT



PREPARED UNDER THE SUPERVISION OF TAIT & ASSOCIATES, INC.

6163 East County Road 16  
 Loveland, CO 80537  
 P: 970.613.1447 F: 970.613.1897  
 www.tait.com

**TAIT**  
 Since 1964

Los Angeles, Boise, Sacramento, Rancho Cucamonga  
 Denver, Dallas

**CRAIG A. SCHNEIDER, AIA**  
**ARCHITECT**  
 1736 East Sunshine, Suite 417  
 Springfield, Missouri 65804  
 417.862.0558  
 Fax: 417.862.3265  
 e-mail: architect@esterischnieder.com

**PROJECT:**  
**NEW O'REILLY AUTO PARTS STORE**  
**N. MARKSHEFFEL ROAD**  
**COLORADO SPRINGS, CO #11**

**GENERAL NOTES**

**O'Reilly AUTO PARTS**  
 CORPORATE OFFICES  
 233 SOUTH PATTERSON  
 SPRINGFIELD, MISSOURI 65802  
 (417) 862-2674 TELEPHONE

COMM # 4369  
 DATE: 10-11-19  
 REVISION  
 DATE: 02-26-2020

**CAUTION:**  
 INFORMATION ON THIS DRAWING CONCERNING TYPE AND LOCATION OF UNDERGROUND AND OTHER UTILITIES IS NOT GUARANTEED TO BE ACCURATE OR ALL INCLUSIVE. THE CONTRACTOR IS RESPONSIBLE FOR MAKING HIS OWN DETERMINATION AS TO THE TYPE AND LOCATION OF UNDERGROUND AND OTHER UTILITIES AS MAY BE NECESSARY TO AVOID DAMAGE THERETO.



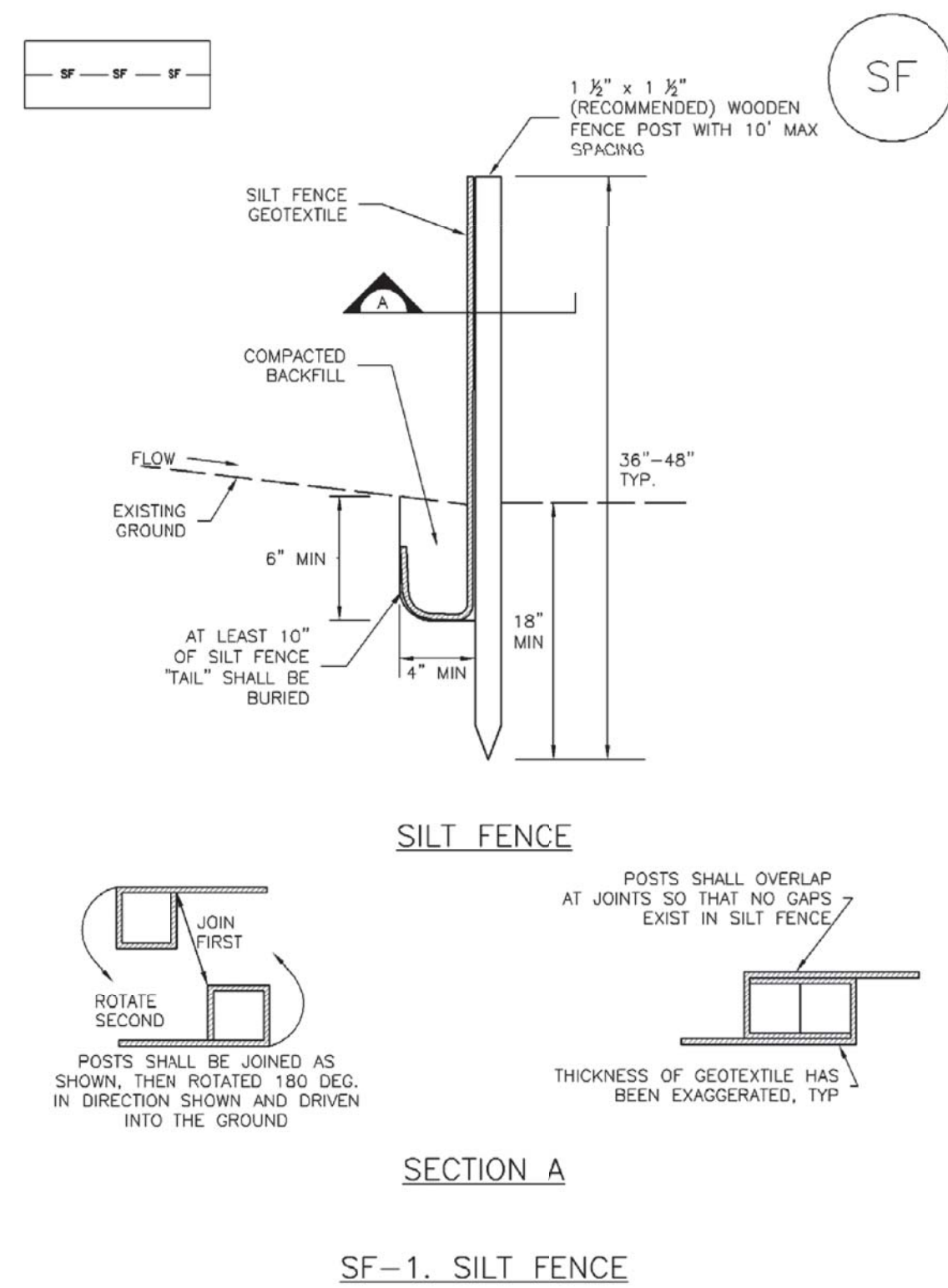
**Know what's below**  
**Call before you dig.**

C1.3



**Silt Fence (SF)**

**SC-1**

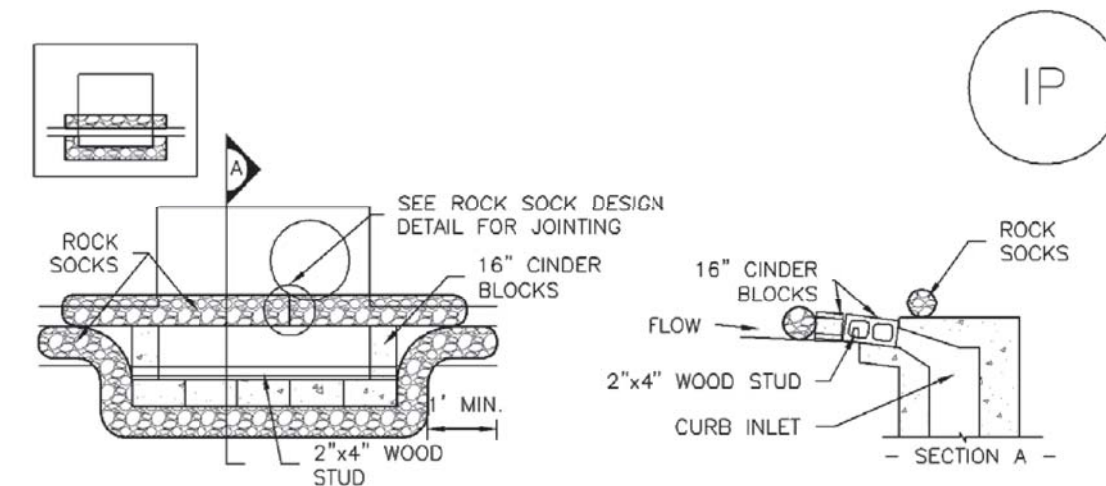


**SF-1. SILT FENCE**

November 2010 Urban Drainage and Flood Control District Urban Storm Drainage Criteria Manual Volume 3 SF-3

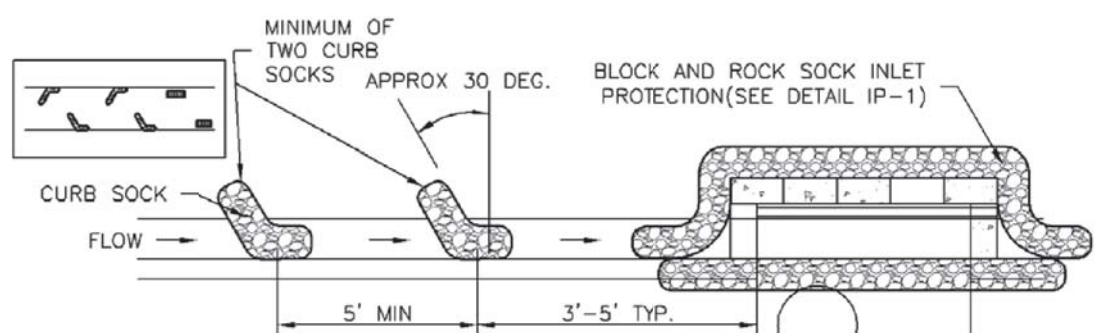
**SC-6**

**Inlet Protection (IP)**



**IP-1. BLOCK AND ROCK SOCK SUMP OR ON GRADE INLET PROTECTION**

- BLOCK AND CURB SOCK INLET PROTECTION INSTALLATION NOTES**
1. SEE ROCK SOCK DESIGN DETAIL FOR INSTALLATION REQUIREMENTS.
  2. CONCRETE "CINDER" BLOCKS SHALL BE LAID ON THEIR SIDES AROUND THE INLET IN A SINGLE ROW, ABUTTING ONE ANOTHER WITH THE OPEN END FACING AWAY FROM THE CURB.
  3. GRAVEL BAGS SHALL BE PLACED AROUND CONCRETE BLOCKS, CLOSELY ABUTTING ONE ANOTHER AND JOINED TOGETHER IN ACCORDANCE WITH ROCK SOCK DESIGN DETAIL.



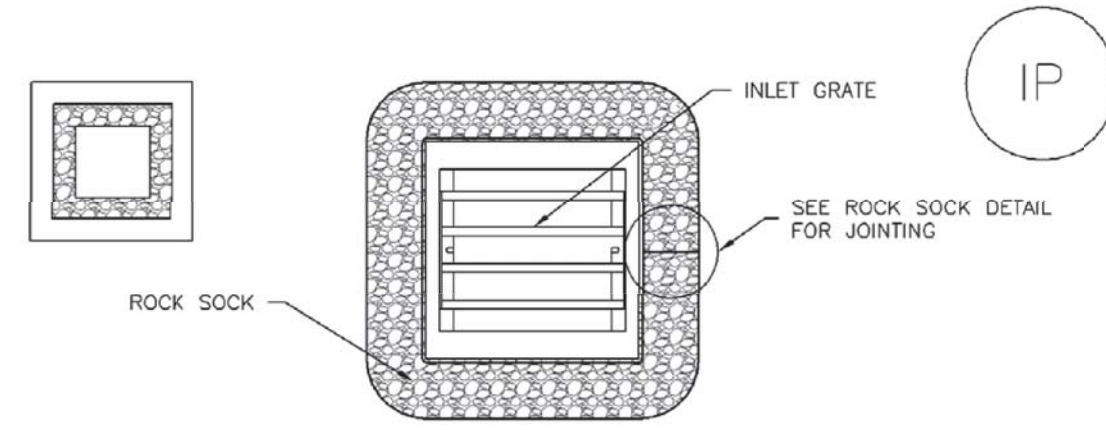
**IP-2. CURB ROCK SOCKS UPSTREAM OF INLET PROTECTION**

- CURB ROCK SOCK INLET PROTECTION INSTALLATION NOTES**
1. SEE ROCK SOCK DESIGN DETAIL INSTALLATION REQUIREMENTS.
  2. PLACEMENT OF THE SOCK SHALL BE APPROXIMATELY 30 DEGREES FROM PERPENDICULAR IN THE OPPOSITE DIRECTION OF FLOW.
  3. SOCKS ARE TO BE FLUSH WITH THE CURB AND SPACED A MINIMUM OF 5 FEET APART.
  4. AT LEAST TWO CURB SOCKS IN SERIES ARE REQUIRED UPSTREAM OF ON-GRADE INLETS.

IP-4 Urban Drainage and Flood Control District Urban Storm Drainage Criteria Manual Volume 3 August 2013

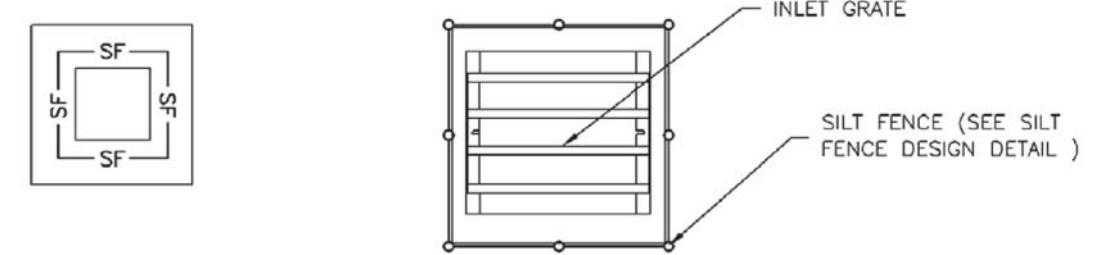
**Inlet Protection (IP)**

**SC-6**



**IP-3. ROCK SOCK SUMP/AREA INLET PROTECTION**

- ROCK SOCK SUMP/AREA INLET PROTECTION INSTALLATION NOTES**
1. SEE ROCK SOCK DESIGN DETAIL FOR INSTALLATION REQUIREMENTS.
  2. STRAW WATTLES/SEDIMENT CONTROL LOGS MAY BE USED IN PLACE OF ROCK SOCKS FOR INLETS IN PERVIOUS AREAS. INSTALL PER SEDIMENT CONTROL LOG DETAIL.



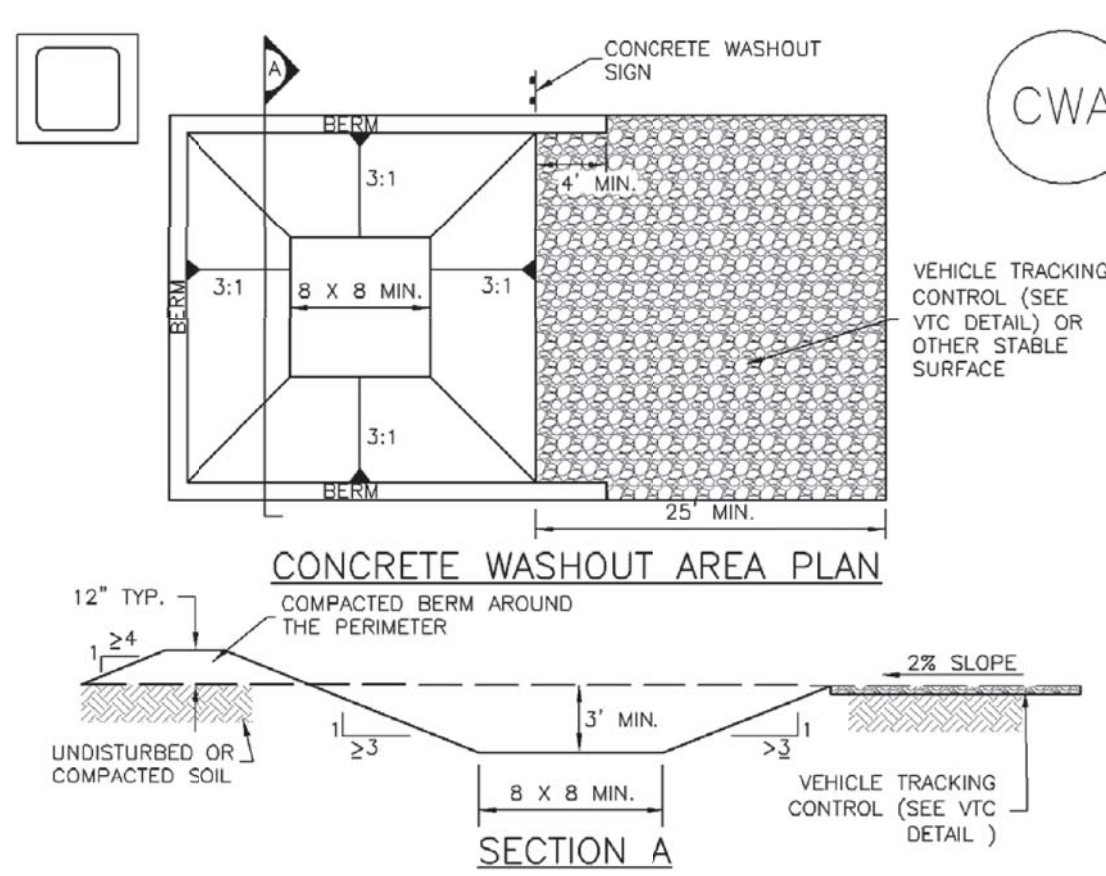
**IP-4. SILT FENCE FOR SUMP INLET PROTECTION**

- SILT FENCE INLET PROTECTION INSTALLATION NOTES**
1. SEE SILT FENCE DESIGN DETAIL FOR INSTALLATION REQUIREMENTS.
  2. POSTS SHALL BE PLACED AT EACH CORNER OF THE INLET AND AROUND THE EDGES AT A MAXIMUM SPACING OF 3 FEET.
  3. STRAW WATTLES/SEDIMENT CONTROL LOGS MAY BE USED IN PLACE OF SILT FENCE FOR INLETS IN PERVIOUS AREAS. INSTALL PER SEDIMENT CONTROL LOG DETAIL.

August 2013 Urban Drainage and Flood Control District Urban Storm Drainage Criteria Manual Volume 3 IP-5

**Concrete Washout Area (CWA)**

**MM-1**



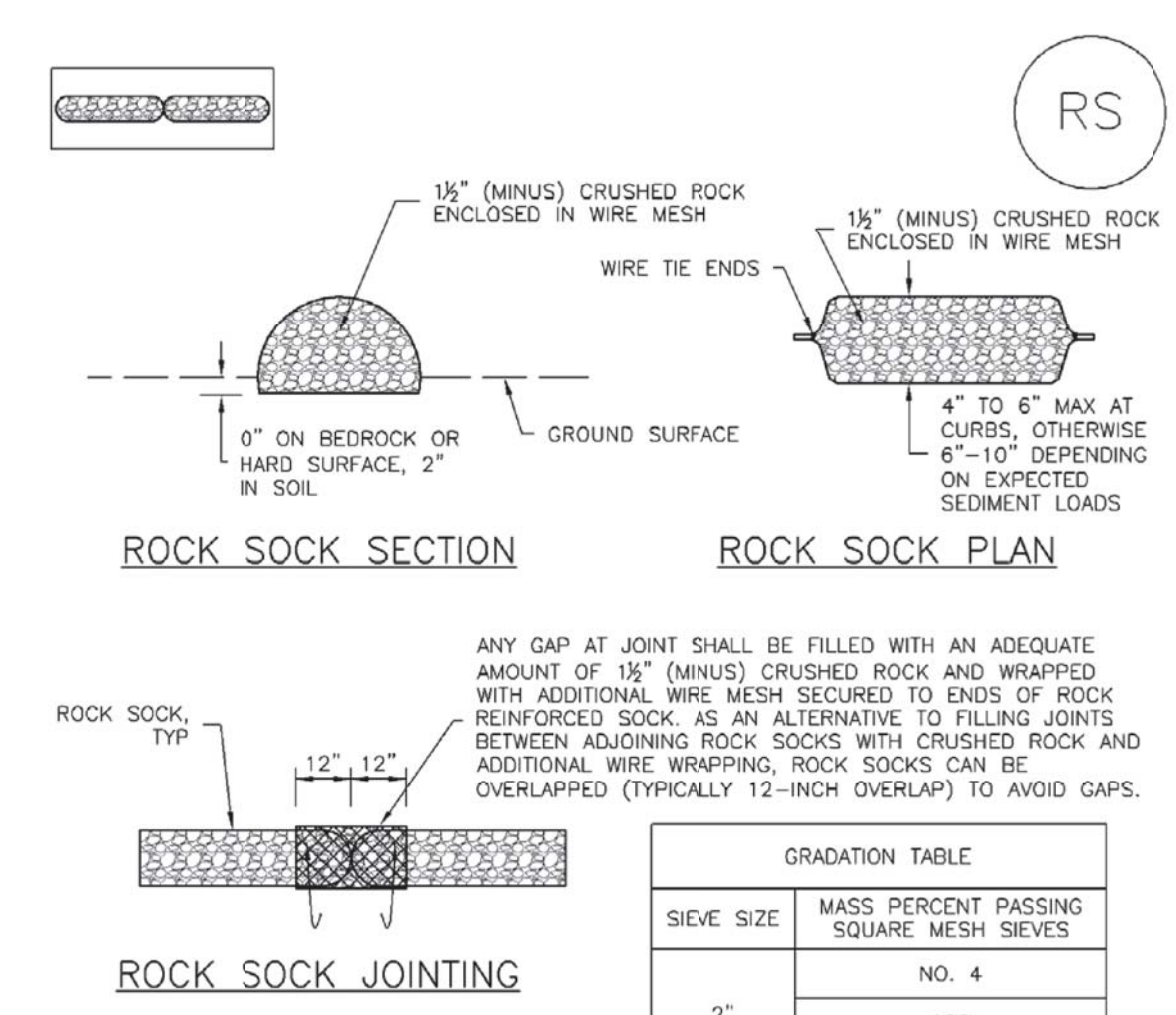
**CWA-1. CONCRETE WASHOUT AREA**

- CWA INSTALLATION NOTES**
1. SEE PLAN VIEW FOR CWA INSTALLATION LOCATION.
  2. DO NOT LOCATE AN UNLINED CWA WITHIN 400' OF ANY NATURAL DRAINAGE PATHWAY OR WATERBODY. DO NOT LOCATE WITHIN 1,000' OF ANY WELLS OR DRINKING WATER SOURCES. IF SITE CONSTRAINTS MAKE THIS INFEASIBLE, OR IF HIGHLY PERMEABLE SOILS EXIST ON SITE, THE CWA MUST BE INSTALLED WITH AN IMPERMEABLE LINER (16 MIL MIN. THICKNESS) OR SURFACE STORAGE ALTERNATIVES USING PREFABRICATED CONCRETE WASHOUT DEVICES OR A LINED ABOVE GROUND STORAGE ARE SHOULD BE USED.
  3. THE CWA SHALL BE INSTALLED PRIOR TO CONCRETE PLACEMENT ON SITE.
  4. CWA SHALL INCLUDE A FLAT SUBSURFACE PIT THAT IS AT LEAST 8' BY 8' SLOPES LEADING OUT OF THE SUBSURFACE PIT SHALL BE 3:1 OR FLATTER. THE PIT SHALL BE AT LEAST 3' DEEP.
  5. BERM SURROUNDING SIDES AND BACK OF THE CWA SHALL HAVE MINIMUM HEIGHT OF 1'.
  6. VEHICLE TRACKING PAD SHALL BE SLOPED 2% TOWARDS THE CWA.
  7. SIGNS SHALL BE PLACED AT THE CONSTRUCTION ENTRANCE, AT THE CWA, AND ELSEWHERE AS NECESSARY TO CLEARLY INDICATE THE LOCATION OF THE CWA TO OPERATORS OF CONCRETE TRUCKS AND PUMP TRUCKS.
  8. USE EXCAVATED MATERIAL FOR PERIMETER BERM CONSTRUCTION.

November 2010 Urban Drainage and Flood Control District Urban Storm Drainage Criteria Manual Volume 3 CWA-3

**SC-5**

**Rock Sock (RS)**



**GRADATION TABLE**

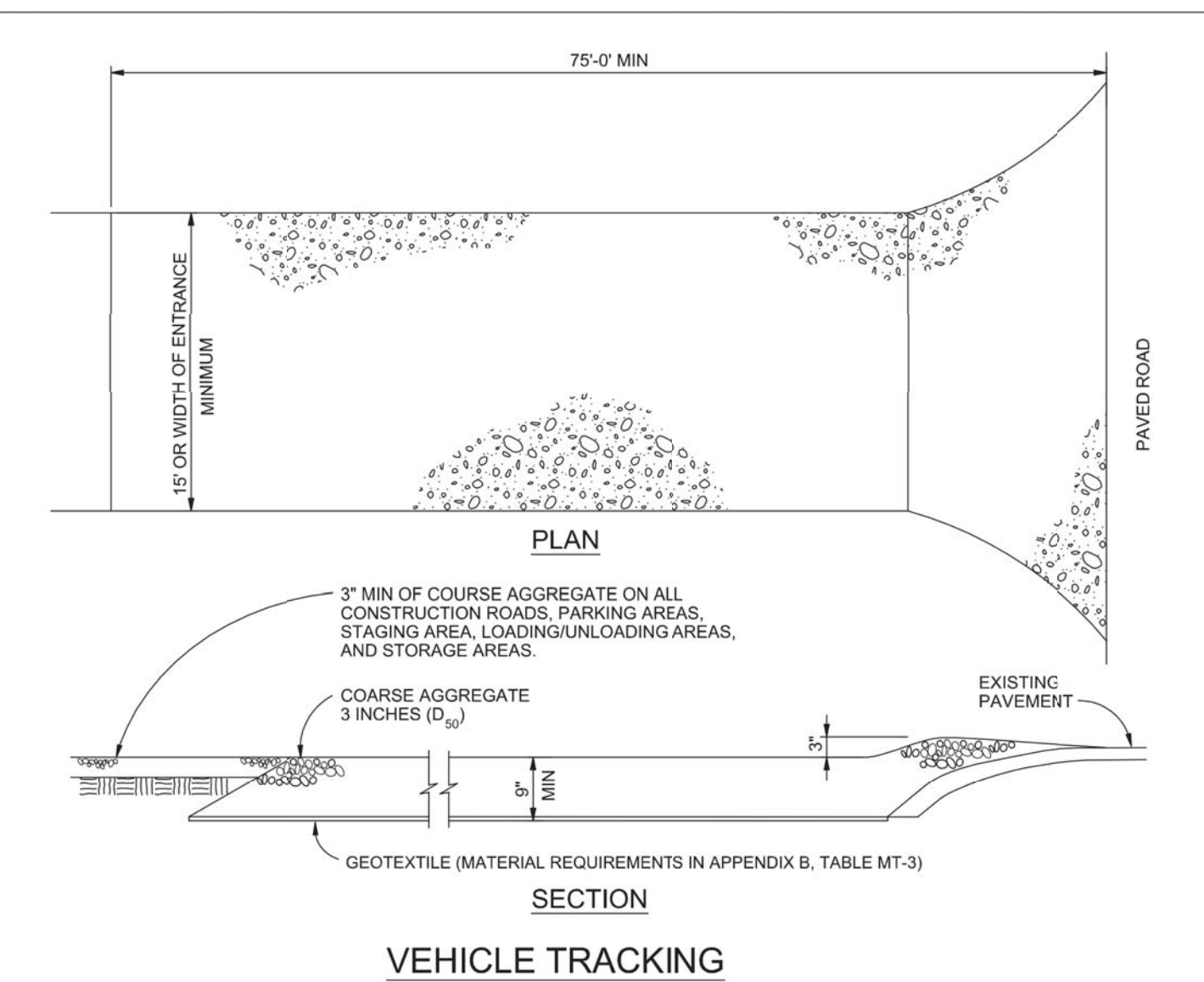
SIEVE SIZE	MASS PERCENT PASSING SQUARE MESH SIEVES
2"	100
1 1/2"	90 - 100
1"	20 - 55
3/4"	0 - 15
3/8"	0 - 5

**MATCHES SPECIFICATIONS FOR NO. 4 COARSE AGGREGATE FOR CONCRETE PER AASHTO M43. ALL ROCK SHALL BE FRACTURED FACE, ALL SIDES.**

- ROCK SOCK INSTALLATION NOTES**
1. SEE PLAN VIEW FOR LOCATION(S) OF ROCK SOCKS.
  2. CRUSHED ROCK SHALL BE 1 1/2" (MINUS) IN SIZE WITH A FRACTURED FACE (ALL SIDES) AND SHALL COMPLY WITH GRADATION SHOWN ON THIS SHEET (1 1/2" MINUS).
  3. WIRE MESH SHALL BE FABRICATED OF 10 GAGE POU-LTRY MESH, OR EQUIVALENT, WITH A MAXIMUM OPENING OF 1/2", RECOMMENDED MINIMUM ROLL WIDTH OF 48"
  4. WIRE MESH SHALL BE SECURED USING "HOG RINGS" OR WIRE TIES AT 6" CENTERS ALONG ALL JOINTS AND AT 2" CENTERS ON ENDS OF SOCKS.
  5. SOME MUNICIPALITIES MAY ALLOW THE USE OF FILTER FABRIC AS AN ALTERNATIVE TO WIRE MESH FOR THE ROCK ENCLOSURE.

**RS-1. ROCK SOCK PERIMETER CONTROL**

RS-2 Urban Drainage and Flood Control District Urban Storm Drainage Criteria Manual Volume 3 November 2010



**VEHICLE TRACKING NOTES**

- INSTALLATION REQUIREMENTS**
1. ALL ENTRANCES TO THE CONSTRUCTION SITE ARE TO BE STABILIZED PRIOR TO CONSTRUCTION BEGINNING.
  2. CONSTRUCTION ENTRANCES ARE TO BE BUILT WITH AN APRON TO ALLOW FOR TURNING TRAFFIC, BUT SHOULD NOT BE BUILT OVER EXISTING PAVEMENT EXCEPT FOR A SLIGHT OVERLAP.
  3. AREAS TO BE STABILIZED ARE TO BE PROPERLY GRADED AND COMPACTED PRIOR TO LAYING DOWN GEOTEXTILE AND STONE.
  4. CONSTRUCTION ROADS, PARKING AREAS, LOADING/UNLOADING ZONES, STORAGE AREAS, AND STAGING AREAS ARE TO BE STABILIZED.
  5. CONSTRUCTION ROADS ARE TO BE BUILT TO CONFORM TO SITE GRADES, BUT SHOULD NOT HAVE SIDE SLOPES OR ROAD GRADES THAT ARE EXCESSIVELY STEEP.
- MAINTENANCE REQUIREMENTS**
1. REGULAR INSPECTIONS ARE TO BE MADE OF ALL STABILIZED AREAS, ESPECIALLY AFTER STORM EVENTS.
  2. STONES ARE TO BE REAPPLIED PERIODICALLY AND WHEN REPAIR IS NECESSARY.
  3. SEDIMENT TRACKED ONTO PAVED ROADS IS TO BE REMOVED DAILY BY SHOVELING OR SWEEPING. SEDIMENT IS NOT TO BE WASHED DOWN STORM SEWER DRAINS.
  4. STORM SEWER INLET PROTECTION IS TO BE IN PLACE, INSPECTED, AND CLEANED IF NECESSARY.
  5. OTHER ASSOCIATED SEDIMENT CONTROL MEASURES ARE TO BE INSPECTED TO ENSURE GOOD WORKING CONDITION.

City of Colorado Springs Stormwater Quality Figure VT-2 Vehicle Tracking Application Examples

**PROJECT:**  
**NEW O'REILLY AUTO PARTS STORE**  
**N. MARKSHEFFEL ROAD**  
**COLORADO SPRINGS, CO #11**

**O'Reilly AUTO PARTS**  
 CORPORATE OFFICES  
 233 SOUTH PATTERSON  
 SPRINGFIELD, MISSOURI 65802  
 (417) 862-2674 TELEPHONE

COMM # 4369  
 DATE: 02-26-2020  
 REVISION DATE: 05-28-2020



**Know what's below**  
**Call before you dig.**

C1.4

PREPARED UNDER THE SUPERVISION OF TAIT & ASSOCIATES, INC.

**TAIT**  
 Since 1964

6165 East County Road 16  
 Loveland, CO 80537  
 P: 970.613/1447 F: 970.613/1897  
 www.tait.com

Los Angeles, Boise, Sacramento, Denver, Dallas, Rancho Cucamonga

**CRAIG A. SCNEIDER, AIA**  
**ARCHITECT**  
 1736 East Sunshine, Suite 417  
 Springfield, Missouri 65804  
 e-mail: architect@esterlyschneider.com  
 417.862.0558  
 Fax: 417.862.3265

TAIT ENGINEERS ARCHITECTS  
 LICENSED PROFESSIONAL ENGINEERS  
 41703  
 ALEX.HOME, PE 41703