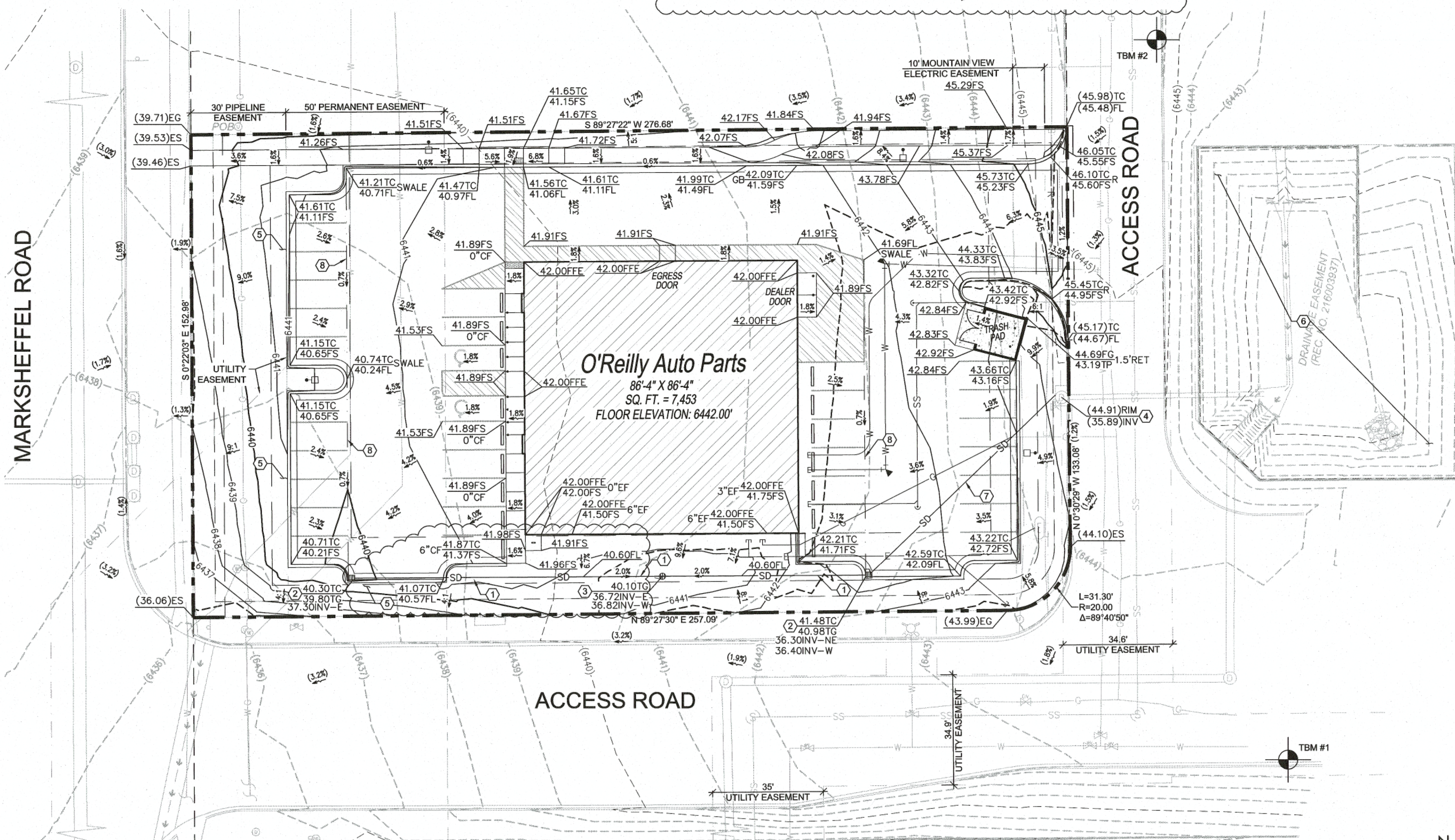


O'REILLY AUTO PARTS STORE
GRADING AND EROSION CONTROL PLAN
EL PASO COUNTY, COLORADO



1 SITE GRADING PLAN

C1.1 SCALE: 1" = 20'-0"

OWNER'S STATEMENT:
THE OWNER WILL COMPLY WITH THE REQUIREMENTS OF THE GRADING AND EROSION CONTROL PLAN.

OWNER SIGNATURE _____ DATE _____

ENGINEER'S STATEMENT:
THIS GRADING AND EROSION CONTROL PLAN WAS PREPARED UNDER MY DIRECTION AND SUPERVISION AND IS CORRECT TO THE BEST OF MY KNOWLEDGE AND BELIEF. SAID PLAN HAS BEEN PREPARED ACCORDING TO THE CRITERIA ESTABLISHED BY THE COUNTY FOR GRADING AND EROSION CONTROL PLANS. I ACCEPT RESPONSIBILITY FOR ANY LIABILITY CAUSED BY ANY NEGLIGENT ACTS, ERRORS OR OMISSIONS ON MY PART IN PREPARING THIS REPORT.

ENGINEER OF RECORD SIGNATURE _____ DATE _____

EL PASO COUNTY:
COUNTY PLAN REVIEW IS PROVIDED ONLY FOR GENERAL CONFORMANCE WITH COUNTY DESIGN CRITERIA. THE COUNTY IS NOT RESPONSIBLE FOR THE ACCURACY AND ADEQUACY OF THE DESIGN, DIMENSIONS, AND/OR ELEVATIONS WHICH SHALL BE CONFIRMED AT THE JOB SITE. THE COUNTY THROUGH THE APPROVAL OF THIS DOCUMENT ASSUMES NO RESPONSIBILITY FOR COMPLETENESS AND/OR ACCURACY OF THIS DOCUMENT. FILED IN ACCORDANCE WITH THE REQUIREMENTS OF THE EL PASO COUNTY LAND DEVELOPMENT CODE, DRAINAGE CRITERIA, AND ENGINEERING CRITERIA MANUAL AS AMENDED.

IN ACCORDANCE WITH ECM SECTION 1.12, THESE CONSTRUCTION DOCUMENTS WILL BE VALID FOR CONSTRUCTION FOR A PERIOD OF 2 YEARS FROM THE DATE SIGNED BY THE EL PASO COUNTY ENGINEER. IF CONSTRUCTION HAS NOT STARTED WITHIN THOSE 2 YEARS, THE PLANS WILL NEED TO BE RESUBMITTED FOR APPROVAL, INCLUDING PAYMENT OF REVIEW FEES AT THE PLANNING AND COMMUNITY DEVELOPMENT DIRECTOR'S DISCRETION.

COUNTY PROJECT ENGINEER SIGNATURE _____ DATE _____

GENERAL NOTES

REFER TO PROJECT MANUAL FOR ADDITIONAL REQUIREMENTS.

SITE CONDITIONS BASED UPON SURVEY PROVIDED BY OWNER FIELD VERIFY EXISTING CONDITIONS BY DETAILED INSPECTION PRIOR TO SUBMITTING BID AND BEGINNING CONSTRUCTION. NOTIFY ENGINEER IF EXISTING CONDITIONS DEVIATE SUBSTANTIALLY FROM THOSE INDICATED HEREIN.

FIELD VERIFY SANITARY SEWER SERVICE CONNECTION INVERT PRIOR TO ESTABLISHING FINAL FINISH FLOOR ELEVATION. NOTIFY ENGINEER IF EXISTING CONDITIONS REQUIRE REVISED FINISH FLOOR ELEVATION TO PROVIDE PROPER DRAINAGE.

ACCESSIBLE PARKING AREAS TO SLOPE 2% MAXIMUM IN ALL DIRECTIONS. DESIGNATED ACCESSIBLE ROUTE TO SLOPE 5% MAXIMUM IN DIRECTION OF TRAVEL WITH 2% MAXIMUM CROSS SLOPE.

THE PROPOSED DEVELOPMENT DISTURBS LESS THAN ONE ACRE.

SITE EXCAVATION REQUIREMENTS

- (A) A GEOTECHNICAL ANALYSIS HAS BEEN PERFORMED ON THIS SITE. REFER TO PROJECT MANUAL.
- (B) FOLLOW GEOTECHNICAL ANALYSIS RECOMMENDATIONS FOR SITE EXCAVATION REQUIREMENTS.
- (C) REFER TO STRUCTURAL DRAWINGS FOR BUILDING EXCAVATION REQUIREMENTS.

ADA NOTE

ALL ACCESSIBLE PATHS OF TRAVEL ARE TO ABIDE BY THE FOLLOWING PARAMETERS:

- CROSS-SLOPE NOT TO EXCEED 2%
- LONGITUDINAL SLOPE NOT TO EXCEED 5%
- LONGITUDINAL RAMP SLOPE NOT TO EXCEED 8.33%
- RAMP LANDINGS NOT TO EXCEED 2% (LANDING PLACEMENT PER RAMP DETAILS)
- PATHWAYS EXCEEDING THESE STANDARDS WILL BE REPLACED AT THE CONTRACTOR'S EXPENSE

THE PARTIES RESPONSIBLE FOR THIS PLAN HAVE FAMILIARIZED THEMSELVES WITH ALL CURRENT ACCESSIBILITY CRITERIA AND SPECIFICATIONS AND THE PROPOSED PLAN REFLECTS ALL SITE ELEMENTS REQUIRED BY THE APPLICABLE ADA DESIGN STANDARDS AND GUIDELINES AS PUBLISHED BY THE UNITED STATES DEPARTMENT OF JUSTICE. APPROVAL OF THIS PLAN BY EL PASO COUNTY DOES NOT ASSURE COMPLIANCE WITH THE ADA OR ANY REGULATIONS OR GUIDELINES ENACTED OR PROMULGATED UNDER OR WITH RESPECT TO SUCH LAWS

BASIS OF BEARING

BEARINGS ARE BASED ON GRID CENTRAL FOR COLORADO COORDINATE SYSTEM, CENTRAL ZONE, NAD83. LATITUDE = 38°51'57.09193", LONGITUDE = 10°40'53.61704", CONVERGENCE ANGLE = 0°11'59".

KEY NOTES

- 12" HDPE STORM DRAIN PIPE AT 0.5% SLOPE.
- 2' X 2' NYLOPLAST CURB INLET WITH STANDARD GRATE AND 24" BASIN.
- 24" AREA INLET WITH 24" NYLOPLAST DOME GRATE.
- CONNECT TO EXISTING STORM DRAIN MANHOLE.
- 2' BENCH AT 2%.
- EXISTING WATER QUALITY AND DETENTION POND.
- 15" HDPE STORM DRAIN PIPE AT 0.5% SLOPE.
- PROPOSED SWALE IN CONCRETE.

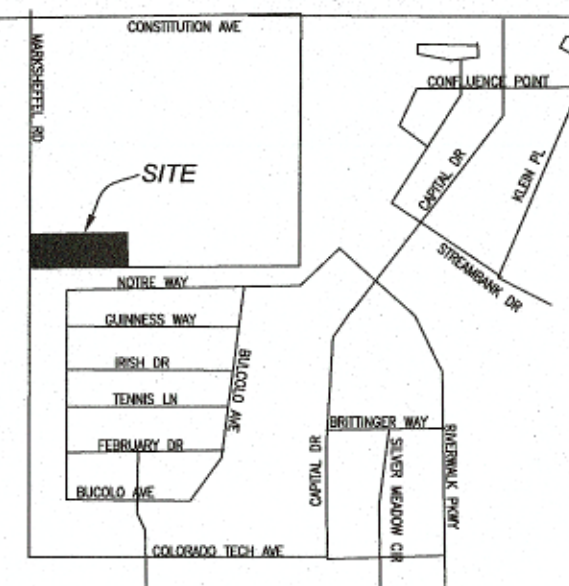
BENCHMARK

TEMPORARY BENCHMARK #1: ELEVATION = 6443.54', SET MAG NAIL, N:1377025.58, E:3233108.44.
TEMPORARY BENCHMARK #2: ELEVATION = 6445.80', SET MAG NAIL, N:1377253.45, E:3233066.72.

VERTICAL DATUM: BASED ON OPUS SOLUTION DATED 4/30/2019, NAVD88.

GRADE FLAG ELEVATIONS SHOWN HEREON ARE TRUNCATED BY 6400 FEET.

VICINITY MAP



SYMBOLS LEGEND

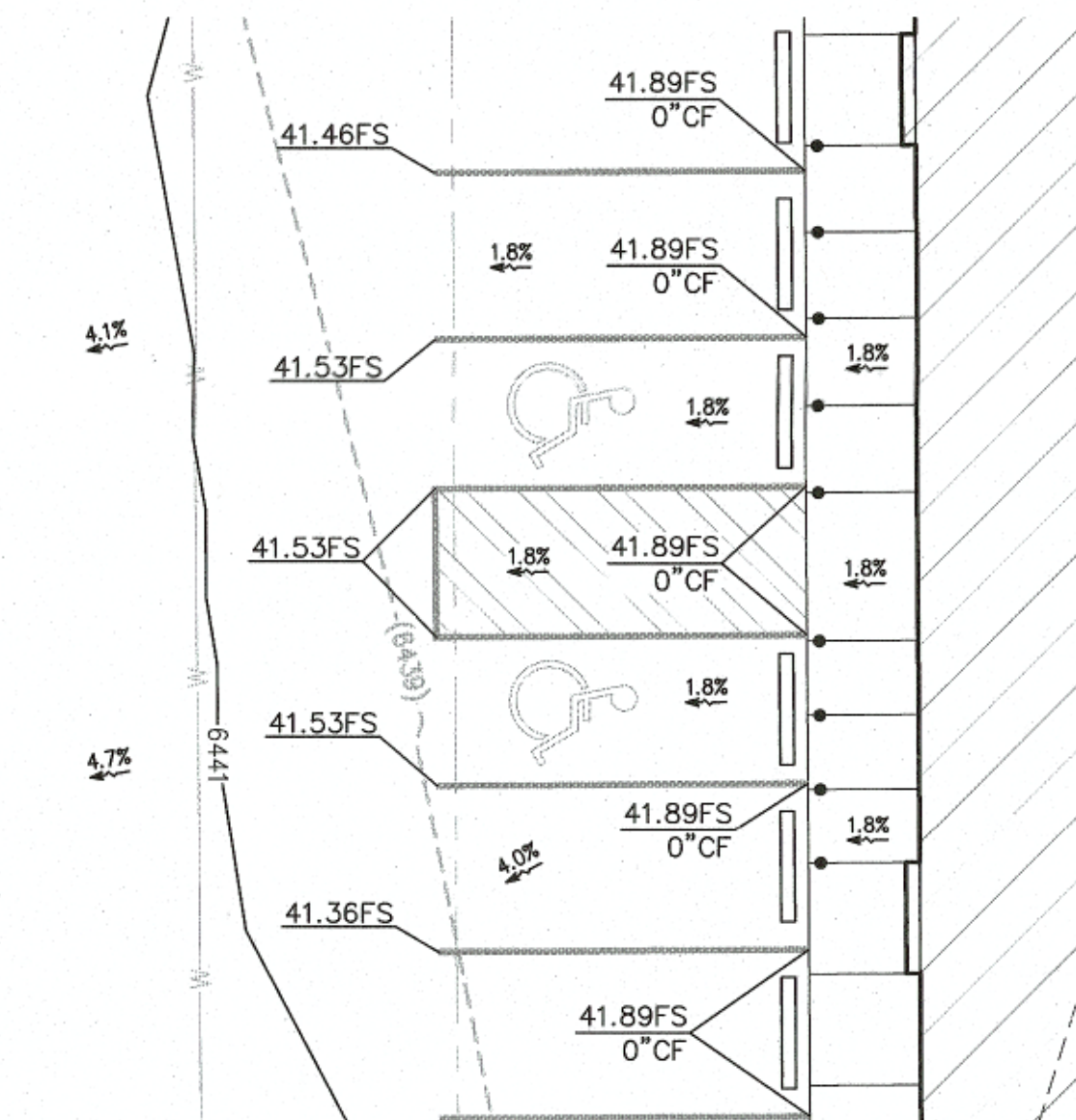
NOTE: REFER TO SURVEY FOR EXISTING CONDITIONS SYMBOLS LEGEND.

- | | |
|----------|--------------------------------------|
| (300.00) | EXISTING ELEV. |
| 300.00 | PROPOSED ELEV. |
| (4300) | EXISTING CONTOURS |
| 4300 | PROPOSED CONTOURS |
| 1.5% | PROPOSED FLOW ARROW |
| (1.5%) | EXISTING FLOW ARROW |
| --- | ADJACENT PROPERTY LINE/ RIGHT OF WAY |
| --- | EASEMENT LINE |
| --- | BUILDING/LANDSCAPE SETBACK LINE |
| --- | PROPOSED SAWCUT |
| --- | PROPERTY LINE/ RIGHT OF WAY |
| --- | NEW BUILDING CONSTRUCTION |
| --- | CUT/FILL LINE |
| --- | NEW CONCRETE PARKING BLOCK |
| --- | PROPOSED LIGHT POST |
| --- | PROPOSED SWALE |

- LIST
- BACK OF WALK
- CURB CUT
- CURB FACE
- EXPOSED FOUNDATION
- EXISTING GROUND
- FINISHED FLOOR ELEVATION
- FINISHED GROUND
- FLOW LINE
- FINISHED SURFACE
- HIGH POINT
- INVERT ELEVATION
- RETAIN RIDGE
- SIDEWALK
- TEMPORARY BENCHMARK
- TOP OF CURB
- TRASH PAD
- BW
- CC
- CF
- EF
- ES
- FF/FFE
- FG
- FL
- FS
- HP
- INV
- RET
- R
- SW/BW
- TBM
- TP

GRADING & EROSION CONTROL SHEET INDEX

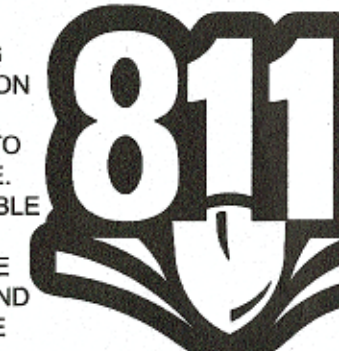
- C1.1 - SITE GRADING PLAN
- C1.2 - SITE EROSION CONTROL PLAN
- C1.3 - GENERAL NOTES
- C1.4 - BMP DETAILS



2 ADA PARKING DETAIL

C1.1 SCALE: 1" = 10'-0"

CAUTION:
INFORMATION ON THIS DRAWING CONCERNING TYPE AND LOCATION OF UNDERGROUND AND OTHER UTILITIES IS NOT GUARANTEED TO BE ACCURATE OR ALL INCLUSIVE. THE CONTRACTOR IS RESPONSIBLE FOR MAKING HIS OWN DETERMINATION AS TO THE TYPE AND LOCATION OF UNDERGROUND AND OTHER UTILITIES AS MAY BE NECESSARY TO AVOID DAMAGE THERETO.



Know what's below
Call before you dig.

EL PASO COUNTY REFERENCE NUMBER: PPR-20-002



6163 East County Road 16
Loveland, CO 80537
P: 970.613.1447
www.tait.com

TAIT

PREPARED UNDER THE SUPERVISION OF TAIT & ASSOCIATES, INC.

Los Angeles Boise Sacramento
Denver Dallas Rancho Cucamonga

ALEX HOWE, PE 41703

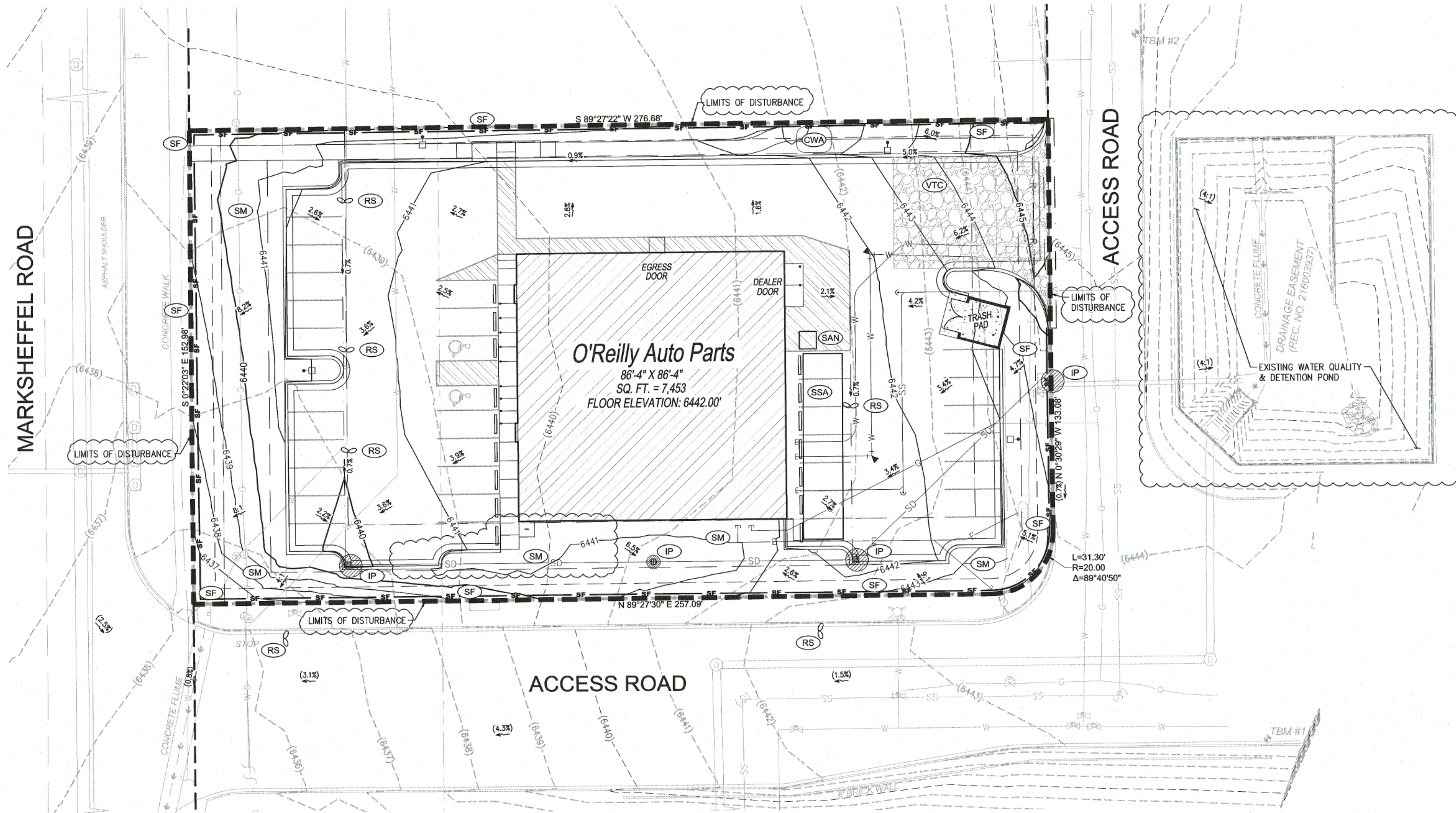
CRAIG A. SCHNEIDER, AIA
ARCHITECT
1736 East Sunshine, Suite 417
Springfield, Missouri 65804
417.862.0558
Fax: 417.862.3265
e-mail: architect@cschneider.com

PROJECT:
NEW O'REILLY AUTO PARTS STORE
N. MARKSHEFFEL ROAD
COLORADO SPRINGS, CO #11
SITE GRADING PLAN

O'Reilly AUTO PARTS
CORPORATE OFFICES
233 SOUTH PATTERSON
SPRINGFIELD, MISSOURI 65802
(417) 862-2674 TELEPHONE

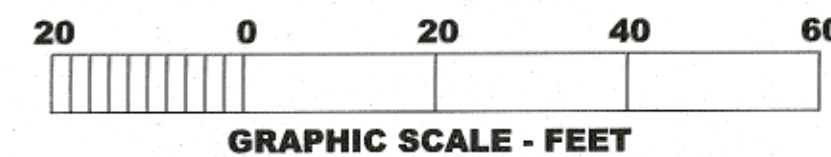
COMM # 4369
DATE: 10-11-19
REVISION
DATE: 02-26-2020

C1.1



1 SITE EROSION CONTROL PLAN

C1.2 SCALE: 1" = 20'-0"



GENERAL PHASING NOTES

- PHASE 1:(PRE-CONSTRUCTION)**
1. INSTALLATION OF EROSION CONTROL SILT FENCE.
 2. DEMOLITION OF EXISTING SITE IMPROVEMENTS.
- SILT FENCE**
- PLACED IN AREAS WITH POTENTIAL TO RELEASE SEDIMENT OFFSITE.
- VEHICLE TRACKING CONTROL**
- SANITARY FACILITIES
- PHASE 2:(DURING GRADING, AND PAVING)**
4. INSTALLATION OF ALL STORM WATER DRAINAGE IMPROVEMENTS.
 5. ROUGH GRADING.
 6. CONSTRUCTION OF NEW SITE IMPROVEMENTS.
 7. FINAL GRADING.
- CONCRETE WASHOUT AREA**
- PRIOR TO ANY CONCRETE WORK
- SEEDING AND MULCHING**
- STOCKPILES OVER 7-DAYS IDLE
- PHASE 3:(POST PAVING)**
8. PLACEMENT OF FINAL LANDSCAPING ITEMS AND SOD.
 9. REMOVAL OF EROSION CONTROL FENCE.
- FINAL LANDSCAPE INSTALLATION PER LANDSCAPE PLANS**
- REMOVE REMAINING EROSION CONTROL BMP'S ONCE STABILIZED

EROSION CONTROL SYMBOLS

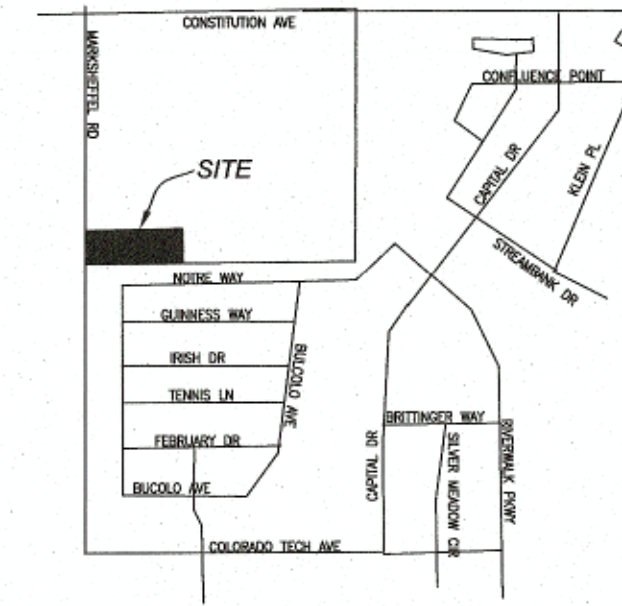
TITLE	KEY	SYMBOL
SILT FENCE	(SF)	
VEHICLE TRACKING CONTROL	(VTC)	
CONCRETE WASHOUT AREA	(CWA)	
SANITARY FACILITIES	(SAN)	
STABILIZED STAGING AREA MATERIAL/EQUIP. STORAGE	(SSA)	
SEEDING AND MULCHING	(SM)	
ROCK SOCK/CURB SOCK	(RS)	
INLET PROTECTION	(IP)	

SYMBOLS LEGEND

NOTE: REFER TO SURVEY FOR EXISTING CONDITIONS SYMBOLS LEGEND.

	(1000)	EXISTING CONTOURS
	1000	PROPOSED CONTOURS
	1.5%	PROPOSED FLOW ARROW
	(1.5%)	EXISTING FLOW ARROW
		PROPERTY LINE
		NEW BUILDING CONSTRUCTION
		ASPHALT PATCH
		NEW CONCRETE PARKING BLOCK
		PROPOSED SWALE IN PAVEMENT/LANDSCAPE
		PROPOSED LIGHT POST
		LIMITS OF CONSTRUCTION AND DISTURBANCE

VICINITY MAP



CONSTRUCTION EGRESS NOTES

1. CONSTRUCTION EGRESS SHALL BE 25' MINIMUM WIDTH AND 30' MINIMUM LENGTH AND 6" MIN THICKNESS OF STONE (1.5"-3.5") COARSE AGGREGATE WITH GEOTEXTILE UNDERLINER. REFER TO CITY OR STATE FOR ANY ADDITIONAL REQUIREMENTS.
2. THE EXIT SHALL BE MAINTAINED IN A CONDITION WHICH WILL PREVENT TRACKING OR FLOW OF MUD ONTO PUBLIC RIGHT-OF-WAY. THIS MAY REQUIRE PERIODIC TOP DRESSING WITH 1.5-3.5 INCH STONE, AS CONDITIONS DEMAND. AND REPAIR AND/OR CLEAN OUT OF ANY STRUCTURE USED TO TRAP SEDIMENT. ALL MATERIALS SPILLED, DROPPED, WASHED, OR TRACKED FROM VEHICLES OR SITE ONTO ROADWAYS OR INTO STORM DRAINS MUST BE REMOVED IMMEDIATELY.
3. WHEELS MUST BE CLEANED TO REMOVE MUD PRIOR TO ENTRANCE ONTO PUBLIC RIGHT-OF-WAY. WHEN WASHING IS REQUIRED, IT SHALL BE DONE ON AN AREA WITH CRUSHED STONE WHICH DRAINS INTO AN APPROVED SEDIMENT TRAP OR SEDIMENT BASIN LOCATED PER CITY OR STATE REQUIREMENTS.

BENCHMARK

TEMPORARY BENCHMARK #1: ELEVATION = 6443.54', SET MAG NAIL, N:1377025.58, E:3233108.44.
TEMPORARY BENCHMARK #2: ELEVATION = 6445.80', SET MAG NAIL, N:1377253.45, E:3233066.72.

VERTICAL DATUM: BASED ON OPUS SOLUTION DATED 4/30/2019, NAVD88.

GRADE FLAG ELEVATIONS SHOWN HEREON ARE TRUNCATED BY 6400 FEET.

BASIS OF BEARING

BEARINGS ARE BASED ON GRID CENTRAL FOR COLORADO COORDINATE SYSTEM, CENTRAL ZONE, NAD83. LATITUDE = 38°51'57.09193", LONGITUDE = 10°40'53.61704", CONVERGENCE ANGLE = 0°11'59".

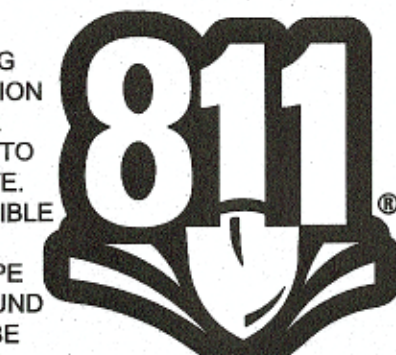
SITE EXCAVATION REQUIREMENTS

A GEOTECHNICAL ANALYSIS HAS BEEN PERFORMED ON THIS SITE. REFER TO PROJECT MANUAL.

FOLLOW GEOTECHNICAL ANALYSIS RECOMMENDATIONS FOR SITE EXCAVATION REQUIREMENTS.

REFER TO STRUCTURAL DRAWINGS FOR BUILDING EXCAVATION REQUIREMENTS.

CAUTION:
INFORMATION ON THIS DRAWING CONCERNING TYPE AND LOCATION OF UNDERGROUND AND OTHER UTILITIES IS NOT GUARANTEED TO BE ACCURATE OR ALL INCLUSIVE. THE CONTRACTOR IS RESPONSIBLE FOR MAKING HIS OWN DETERMINATION AS TO THE TYPE AND LOCATION OF UNDERGROUND AND OTHER UTILITIES AS MAY BE NECESSARY TO AVOID DAMAGE THERETO.



Know what's below
Call before you dig.



6163 East County Road 16
Loveland, CO 80537
P: 970.613.1447
F: 970.613.1897
WWW.TAIT.COM

TAIT
Since 1964

PREPARED UNDER THE SUPERVISION OF TAIT & ASSOCIATES, INC.

Los Angeles Boise Dallas Sacramento
Denver Rancho Cucamonga

ALEX HUME, PE 41703

CRAIG A. SCHNEIDER, AIA
ARCHITECT

417.862.0558
417.862.3265
e-mail: architect@estrischneider.com

PROJECT:
NEW O'REILLY AUTO PARTS STORE
N. MARKSHEFFEL ROAD
COLORADO SPRINGS, CO #11
SITE EROSION CONTROL PLAN

O'Reilly AUTO PARTS
CORPORATE OFFICES
233 SOUTH PATTERSON
SPRINGFIELD, MISSOURI 65802
(417) 862-2674 TELEPHONE

COMM # 4369
DATE: 10-11-19
REVISION
DATE: 02-26-2020

C1.2

STANDARD NOTES FOR EL PASO COUNTY GRADING AND EROSION CONTROL PLANS

1. STORMWATER DISCHARGES FROM CONSTRUCTION SITES SHALL NOT CAUSE OR THREATEN TO CAUSE POLLUTION, CONTAMINATION, OR DEGRADATION OF STATE WATERS. ALL WORK AND EARTH DISTURBANCE SHALL BE DONE IN A MANNER THAT MINIMIZES POLLUTION OF ANY ON-SITE OR OFF-SITE WATERS, INCLUDING WETLANDS.
2. NOTWITHSTANDING ANYTHING DEPICTED IN THESE PLANS IN WORDS OR GRAPHIC REPRESENTATION, ALL DESIGN AND CONSTRUCTION RELATED TO ROADS, STORM DRAINAGE AND EROSION CONTROL SHALL CONFORM TO THE STANDARDS AND REQUIREMENTS OF THE MOST RECENT VERSION OF THE RELEVANT ADOPTED EL PASO COUNTY STANDARDS, INCLUDING THE LAND DEVELOPMENT CODE, THE ENGINEERING CRITERIA MANUAL, THE DRAINAGE CRITERIA MANUAL, AND THE DRAINAGE CRITERIA MANUAL VOLUME 2. ANY DEVIATIONS FROM REGULATIONS AND STANDARDS MUST BE REQUESTED, AND APPROVED, IN WRITING.
3. A SEPARATE STORMWATER MANAGEMENT PLAN (SMWP) FOR THIS PROJECT SHALL BE COMPLETED AND AN EROSION AND STORMWATER QUALITY CONTROL PERMIT (ESQCP) ISSUED PRIOR TO COMMENCING CONSTRUCTION. MANAGEMENT OF THE SWMP DURING CONSTRUCTION IS THE RESPONSIBILITY OF THE DESIGNATED QUALIFIED STORMWATER MANAGER OR CERTIFIED EROSION CONTROL INSPECTOR. THE SWMP SHALL BE LOCATED ON SITE AT ALL TIMES DURING CONSTRUCTION AND SHALL BE KEPT UP TO DATE WITH WORK PROGRESS AND CHANGES IN THE FIELD.
4. ONCE THE ESQCP IS APPROVED AND A "NOTICE TO PROCEED" HAS BEEN ISSUED, THE CONTRACTOR MAY INSTALL THE INITIAL STAGE EROSION AND SEDIMENT CONTROL MEASURES AS INDICATED ON THE APPROVED GEC. A PRECONSTRUCTION MEETING BETWEEN THE CONTRACTOR, ENGINEER, AND EL PASO COUNTY WILL BE HELD PRIOR TO ANY CONSTRUCTION. IT IS THE RESPONSIBILITY OF THE APPLICANT TO COORDINATE THE MEETING TIME AND PLACE WITH COUNTY STAFF.
5. CONTROL MEASURES MUST BE INSTALLED PRIOR TO COMMENCEMENT OF ACTIVITIES THAT COULD CONTRIBUTE POLLUTANTS TO STORMWATER. CONTROL MEASURES FOR ALL SLOPES, CHANNELS, DITCHES, AND DISTURBED LAND AREAS SHALL BE INSTALLED IMMEDIATELY UPON COMPLETION OF THE DISTURBANCE.
6. ALL TEMPORARY SEDIMENT AND EROSION CONTROL MEASURES SHALL BE MAINTAINED AND REMAIN IN EFFECTIVE OPERATING CONDITION UNTIL PERMANENT SOIL EROSION CONTROL MEASURES ARE IMPLEMENTED AND FINAL STABILIZATION IS ESTABLISHED. ALL PERSONS ENGAGED IN LAND DISTURBANCE ACTIVITIES SHALL ASSESS THE ADEQUACY OF CONTROL MEASURES AT THE SITE AND IDENTIFY IF CHANGES TO THOSE CONTROL MEASURES ARE NEEDED TO ENSURE THE CONTINUED EFFECTIVE PERFORMANCE OF THE CONTROL MEASURES. ALL CHANGES TO TEMPORARY SEDIMENT AND EROSION CONTROL MEASURES MUST BE INCORPORATED INTO THE STORMWATER MANAGEMENT PLAN.
7. TEMPORARY STABILIZATION SHALL BE IMPLEMENTED ON DISTURBED AREAS AND STOCKPILES WHERE GROUND DISTURBING CONSTRUCTION ACTIVITY HAS PERMANENTLY CEASED OR TEMPORARILY CEASED FOR LONGER THAN 14 DAYS.
8. FINAL STABILIZATION MUST BE IMPLEMENTED AT ALL APPLICABLE CONSTRUCTION SITES. FINAL STABILIZATION IS ACHIEVED WHEN ALL GROUND DISTURBING ACTIVITIES ARE COMPLETE AND ALL DISTURBED AREAS EITHER HAVE A UNIFORM VEGETATIVE COVER WITH INDIVIDUAL PLANT DENSITY OF 70 PERCENT OF PRE-DISTURBANCE LEVELS ESTABLISHED OR EQUIVALENT PERMANENT ALTERNATIVE STABILIZATION METHOD IS IMPLEMENTED. ALL TEMPORARY SEDIMENT AND EROSION CONTROL MEASURES SHALL BE REMOVED UPON FINAL STABILIZATION AND BEFORE PERMIT CLOSURE.
9. ALL PERMANENT STORMWATER MANAGEMENT FACILITIES SHALL BE INSTALLED AS DESIGNED IN THE APPROVED PLANS. ANY PROPOSED CHANGES THAT EFFECT THE DESIGN OR FUNCTION OF PERMANENT STORMWATER MANAGEMENT STRUCTURES MUST BE APPROVED BY THE ECM ADMINISTRATOR PRIOR TO IMPLEMENTATION.
10. EARTH DISTURBANCES SHALL BE CONDUCTED IN SUCH A MANNER SO AS TO EFFECTIVELY MINIMIZE ACCELERATED SOIL EROSION AND RESULTING SEDIMENTATION. ALL DISTURBANCES SHALL BE DESIGNED, CONSTRUCTED, AND COMPLETED SO THAT THE EXPOSED AREA OF ANY DISTURBED LAND SHALL BE LIMITED TO THE SHORTEST PRACTICAL PERIOD OF TIME. PRE-EXISTING VEGETATION SHALL BE PROTECTED AND MAINTAINED WITHIN 50 HORIZONTAL FEET OF A WATERS OF THE STATE UNLESS SHOWN TO BE INFEASIBLE AND SPECIFICALLY REQUESTED AND APPROVED.
11. COMPACTION OF SOIL MUST BE PREVENTED IN AREAS DESIGNATED FOR INFILTRATION CONTROL MEASURES OR WHERE FINAL STABILIZATION WILL BE ACHIEVED BY VEGETATIVE COVER. AREAS DESIGNATED FOR INFILTRATION CONTROL MEASURES SHALL ALSO BE PROTECTED FROM SEDIMENTATION DURING CONSTRUCTION UNTIL FINAL STABILIZATION IS ACHIEVED. IF COMPACTION PREVENTION IS NOT FEASIBLE DUE TO SITE CONSTRAINTS, ALL AREAS DESIGNATED FOR INFILTRATION AND VEGETATION CONTROL MEASURES MUST BE LOOSENED PRIOR TO INSTALLATION OF THE CONTROL MEASURE(S).
12. ANY TEMPORARY OR PERMANENT FACILITY DESIGNED AND CONSTRUCTED FOR THE CONVEYANCE OF STORMWATER AROUND, THROUGH, OR FROM THE EARTH DISTURBANCE AREA SHALL BE A STABILIZED CONVEYANCE DESIGNED TO MINIMIZE EROSION AND THE DISCHARGE OF SEDIMENT OFF SITE.
13. CONCRETE WASH WATER SHALL BE CONTAINED AND DISPOSED OF IN ACCORDANCE WITH THE SWMP. NO WASH WATER SHALL BE DISCHARGED TO OR ALLOWED TO ENTER STATE WATERS, INCLUDING ANY SURFACE OR SUBSURFACE STORM DRAINAGE SYSTEM OR FACILITIES. CONCRETE WASHOUTS SHALL NOT BE LOCATED IN AN AREA WHERE SHALLOW GROUNDWATER MAY BE PRESENT, OR WITHIN 50 FEET OF A SURFACE WATER BODY, CREEK OR STREAM.
14. DURING DEWATERING OPERATIONS OF UNCONTAMINATED GROUND WATER MAY BE DISCHARGED ON SITE, BUT SHALL NOT LEAVE THE SITE IN THE FORM OF SURFACE RUNOFF UNLESS AN APPROVED STATE DEWATERING PERMIT IS IN PLACE.

15. EROSION CONTROL BLANKETING OR OTHER PROTECTIVE COVERING SHALL BE USED ON SLOPES STEEPER THAN 3:1.
16. CONTRACTOR SHALL BE RESPONSIBLE FOR THE REMOVAL OF ALL WASTES FROM THE CONSTRUCTION SITE FOR DISPOSAL IN ACCORDANCE WITH LOCAL AND STATE REGULATORY REQUIREMENTS. NO CONSTRUCTION DEBRIS, TREE SLASH, BUILDING MATERIAL WASTES OR UNUSED BUILDING MATERIALS SHALL BE BURIED, DUMPED, OR DISCHARGED AT THE SITE.
17. WASTE MATERIALS SHALL NOT BE TEMPORARILY PLACED OR STORED IN THE STREET, ALLEY, OR OTHER PUBLIC WAY, UNLESS IN ACCORDANCE WITH AN APPROVED TRAFFIC CONTROL PLAN. CONTROL MEASURES MAY BE REQUIRED BY EL PASO COUNTY ENGINEERING IF DEEMED NECESSARY, BASED ON SPECIFIC CONDITIONS AND CIRCUMSTANCES.
18. TRACKING OF SOILS AND CONSTRUCTION DEBRIS OFF-SITE SHALL BE MINIMIZED. MATERIALS TRACKED OFF-SITE SHALL BE CLEANED UP AND PROPERLY DISPOSED OF IMMEDIATELY.
19. THE OWNER/DEVELOPER SHALL BE RESPONSIBLE FOR THE REMOVAL OF ALL CONSTRUCTION DEBRIS, DIRT, TRASH, ROCK, SEDIMENT, SOIL, AND SAND THAT MAY ACCUMULATE IN ROADS, STORM DRAINS AND OTHER DRAINAGE CONVEYANCE SYSTEMS AND STORMWATER APPURTENANCES AS A RESULT OF SITE DEVELOPMENT.
20. THE QUANTITY OF MATERIALS STORED ON THE PROJECT SITE SHALL BE LIMITED, AS MUCH AS PRACTICAL, TO THAT QUANTITY REQUIRED TO PERFORM THE WORK IN AN ORDERLY SEQUENCE. ALL MATERIALS STORED ON-SITE SHALL BE STORED IN A NEAT, ORDERLY MANNER, IN THEIR ORIGINAL CONTAINERS, WITH ORIGINAL MANUFACTURER'S LABELS.
21. NO CHEMICAL(S) HAVING THE POTENTIAL TO BE RELEASED IN STORMWATER ARE TO BE STORED OR USED ONSITE UNLESS PERMISSION FOR THE USE OF SUCH CHEMICAL(S) IS GRANTED IN WRITING BY THE ECM ADMINISTRATOR. IN GRANTING APPROVAL FOR THE USE OF SUCH CHEMICAL(S), SPECIAL CONDITIONS AND MONITORING MAY BE REQUIRED.
22. BULK STORAGE OF ALLOWED PETROLEUM PRODUCTS OR OTHER ALLOWED LIQUID CHEMICALS IN EXCESS OF 55 GALLONS SHALL REQUIRE ADEQUATE SECONDARY CONTAINMENT PROTECTION TO CONTAIN ALL SPILLS ONSITE AND TO PREVENT ANY SPILLED MATERIALS FROM ENTERING STATE WATERS, ANY SURFACE OR SUBSURFACE STORM DRAINAGE SYSTEM OR OTHER FACILITIES.
23. NO PERSON SHALL CAUSE THE IMPEDIMENT OF STORMWATER FLOW IN THE CURB AND GUTTER OR DITCH EXCEPT WITH APPROVED SEDIMENT CONTROL MEASURES.
24. OWNER/DEVELOPER AND THEIR AGENTS SHALL COMPLY WITH THE "COLORADO WATER QUALITY CONTROL ACT" (TITLE 25, ARTICLE 8, CRS), AND THE "CLEAN WATER ACT" (33 USC 1344), IN ADDITION TO THE REQUIREMENTS OF THE LAND DEVELOPMENT CODE, DCM VOLUME II AND THE ECM APPENDIX I. ALL APPROPRIATE PERMITS MUST BE OBTAINED BY THE CONTRACTOR PRIOR TO CONSTRUCTION (1041, NPDES, FLOODPLAIN, 404, FUGITIVE DUST, ETC.), IN THE EVENT OF CONFLICTS BETWEEN THESE REQUIREMENTS AND OTHER LAWS, RULES, OR REGULATIONS OF OTHER FEDERAL, STATE, LOCAL, OR COUNTY AGENCIES, THE MOST RESTRICTIVE LAWS, RULES, OR REGULATIONS SHALL APPLY.
25. ALL CONSTRUCTION TRAFFIC MUST ENTER/EXIT THE SITE ONLY AT APPROVED CONSTRUCTION ACCESS POINTS.
26. PRIOR TO CONSTRUCTION THE PERMITTEE SHALL VERIFY THE LOCATION OF EXISTING UTILITIES.
27. A WATER SOURCE SHALL BE AVAILABLE ON SITE DURING EARTHWORK OPERATIONS AND SHALL BE UTILIZED AS REQUIRED TO MINIMIZE DUST FROM EARTHWORK EQUIPMENT AND WIND.
28. THE SOILS REPORT FOR THIS SITE HAS BEEN PREPARED BY TERRACON AND SHALL BE CONSIDERED A PART OF THESE PLANS.
29. AT LEAST TEN (10) DAYS PRIOR TO THE ANTICIPATED START OF CONSTRUCTION, FOR PROJECTS THAT WILL DISTURB ONE (1) ACRE OR MORE, THE OWNER OR OPERATOR OF CONSTRUCTION ACTIVITY SHALL SUBMIT A PERMIT APPLICATION FOR STORMWATER DISCHARGE TO THE COLORADO DEPARTMENT OF PUBLIC HEALTH AND ENVIRONMENT, WATER QUALITY DIVISION. THE APPLICATION CONTAINS CERTIFICATION OF COMPLETION OF A STORMWATER MANAGEMENT PLAN (SWMP), OF WHICH THIS GRADING AND EROSION CONTROL PLAN MAY BE A PART. FOR INFORMATION OR APPLICATION MATERIALS CONTACT:
- COLORADO DEPARTMENT OF PUBLIC HEALTH AND ENVIRONMENT
WATER QUALITY CONTROL DIVISION
WQCD - PERMITS
4300 CHERRY CREEK DRIVE SOUTH
DENVER, CO 80246-1530
ATTN: PERMITS UNIT


PREPARED UNDER THE SUPERVISION OF TAIT & ASSOCIATES, INC.

6163 East County Road 16
Loveland, CO 80537
P: 970/613/1447
www.tait.com

TAIT
Since 1964

6163 East County Road 16
Loveland, CO 80537
F: 970/613/1897
www.tait.com

Los Angeles
Boise
Denver
Sacramento
Rancho Cucamonga



ALEX HOUME, PE 41703

PROJECT:
NEW O'REILLY AUTO PARTS STORE
N. MARKSHEFFEL ROAD
COLORADO SPRINGS, CO #11

GENERAL NOTES

CRAIG A. SCHNEIDER, AIA
ARCHITECT

1736 East Sunshine, Suite 417
Springfield, Missouri 65804
e-mail: architect@ctenrystschneider.com
417.862.0558
Fax: 417.862.3285

CAUTION:
INFORMATION ON THIS DRAWING
CONCERNING TYPE AND LOCATION
OF UNDERGROUND AND OTHER
UTILITIES IS NOT GUARANTEED TO
BE ACCURATE OR ALL INCLUSIVE.
THE CONTRACTOR IS RESPONSIBLE
FOR MAKING HIS OWN
DETERMINATION AS TO THE TYPE
AND LOCATION OF UNDERGROUND
AND OTHER UTILITIES AS MAY BE
NECESSARY TO AVOID DAMAGE
THERETO.

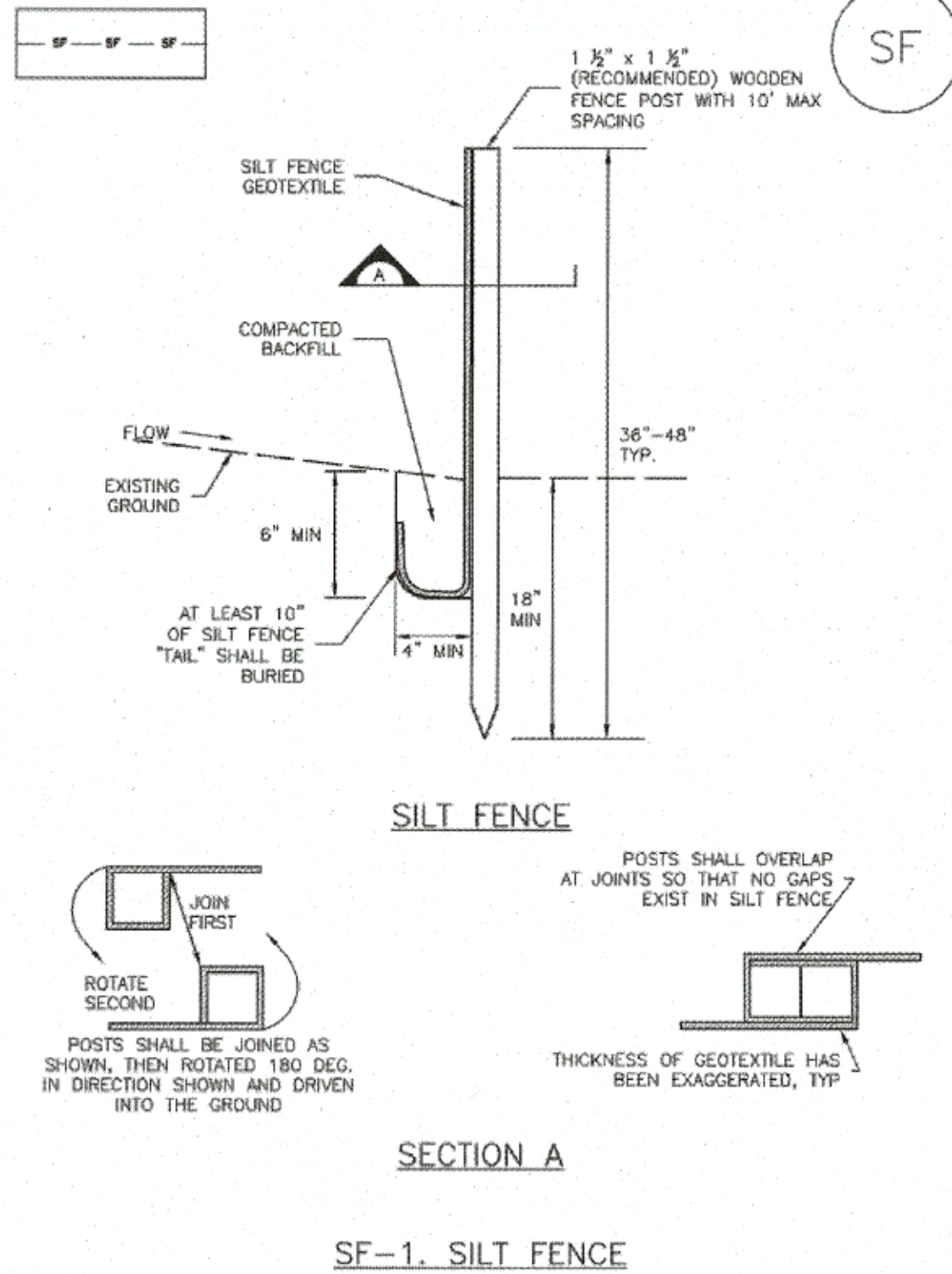


Know what's below
Call before you dig.

COMM #	4369
DATE:	10-11-19
REVISION	
DATE:	02-26-2020

Silt Fence (SF)

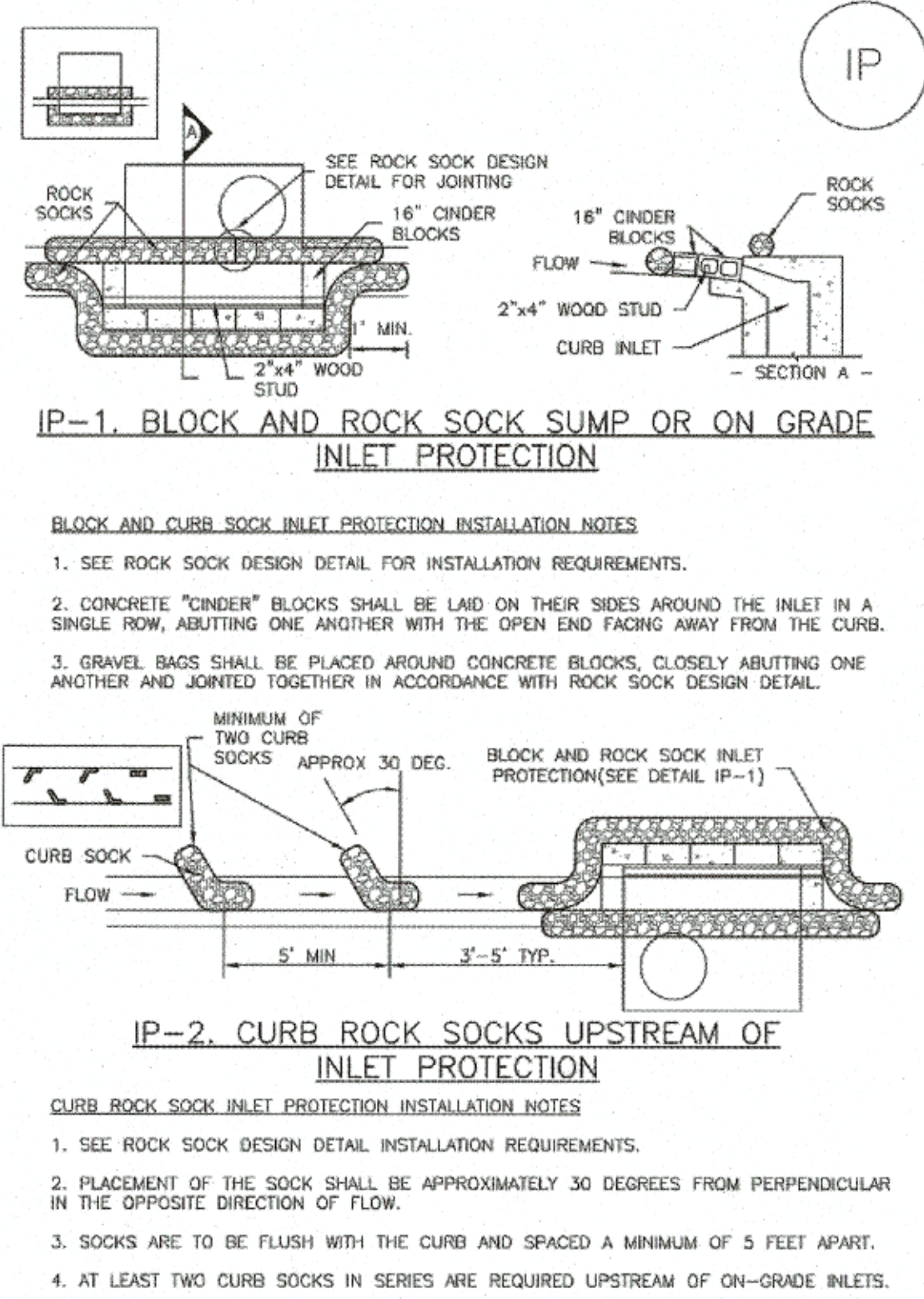
SC-1



November 2010 Urban Drainage and Flood Control District
Urban Storm Drainage Criteria Manual Volume 3 SF-3

SC-6

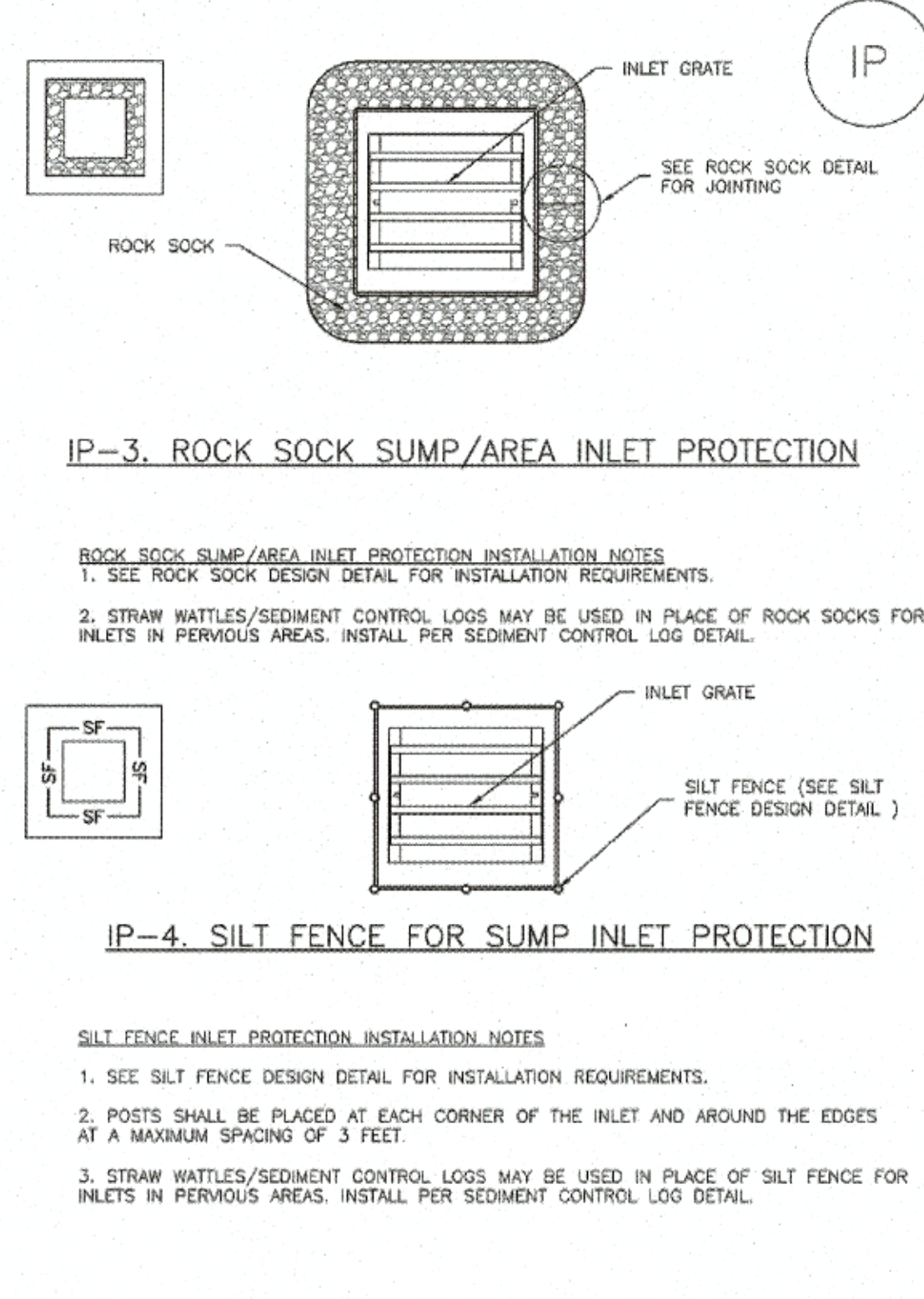
Inlet Protection (IP)



IP-4 Urban Drainage and Flood Control District
Urban Storm Drainage Criteria Manual Volume 3 August 2013

Inlet Protection (IP)

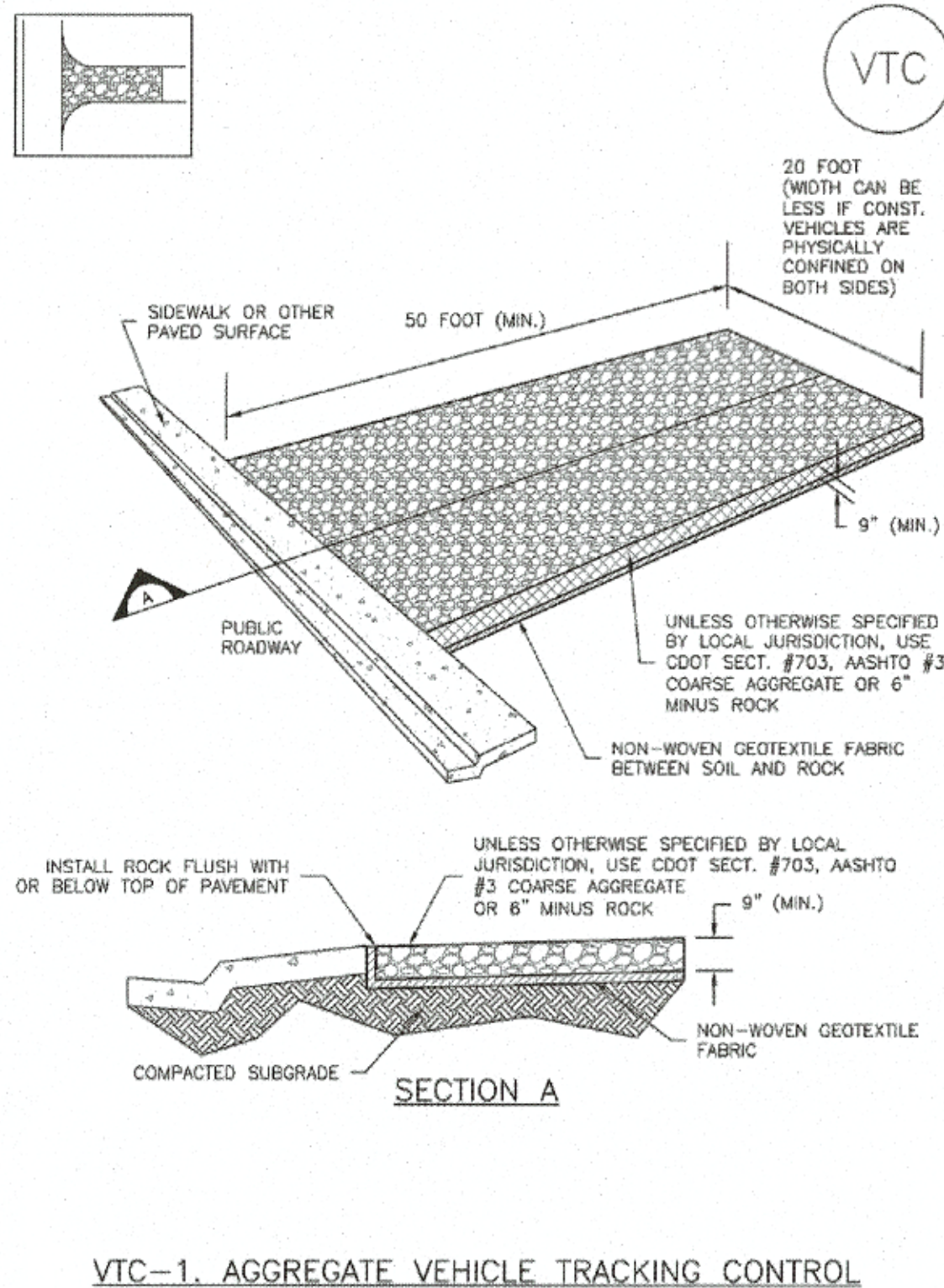
SC-6



August 2013 Urban Drainage and Flood Control District
Urban Storm Drainage Criteria Manual Volume 3 IP-5

Vehicle Tracking Control (VTC)

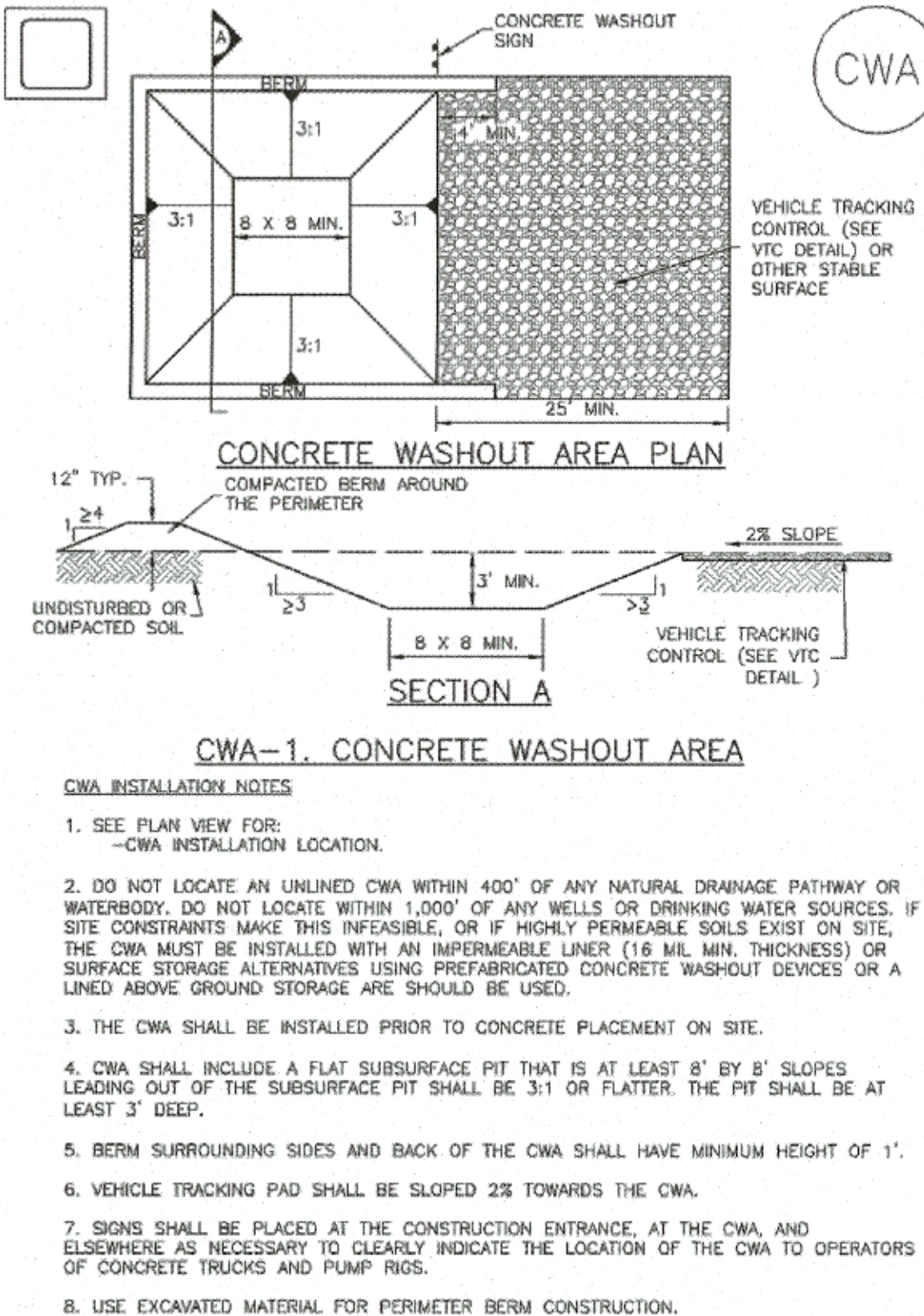
SM-4



November 2010 Urban Drainage and Flood Control District
Urban Storm Drainage Criteria Manual Volume 3 VTC-3

Concrete Washout Area (CWA)

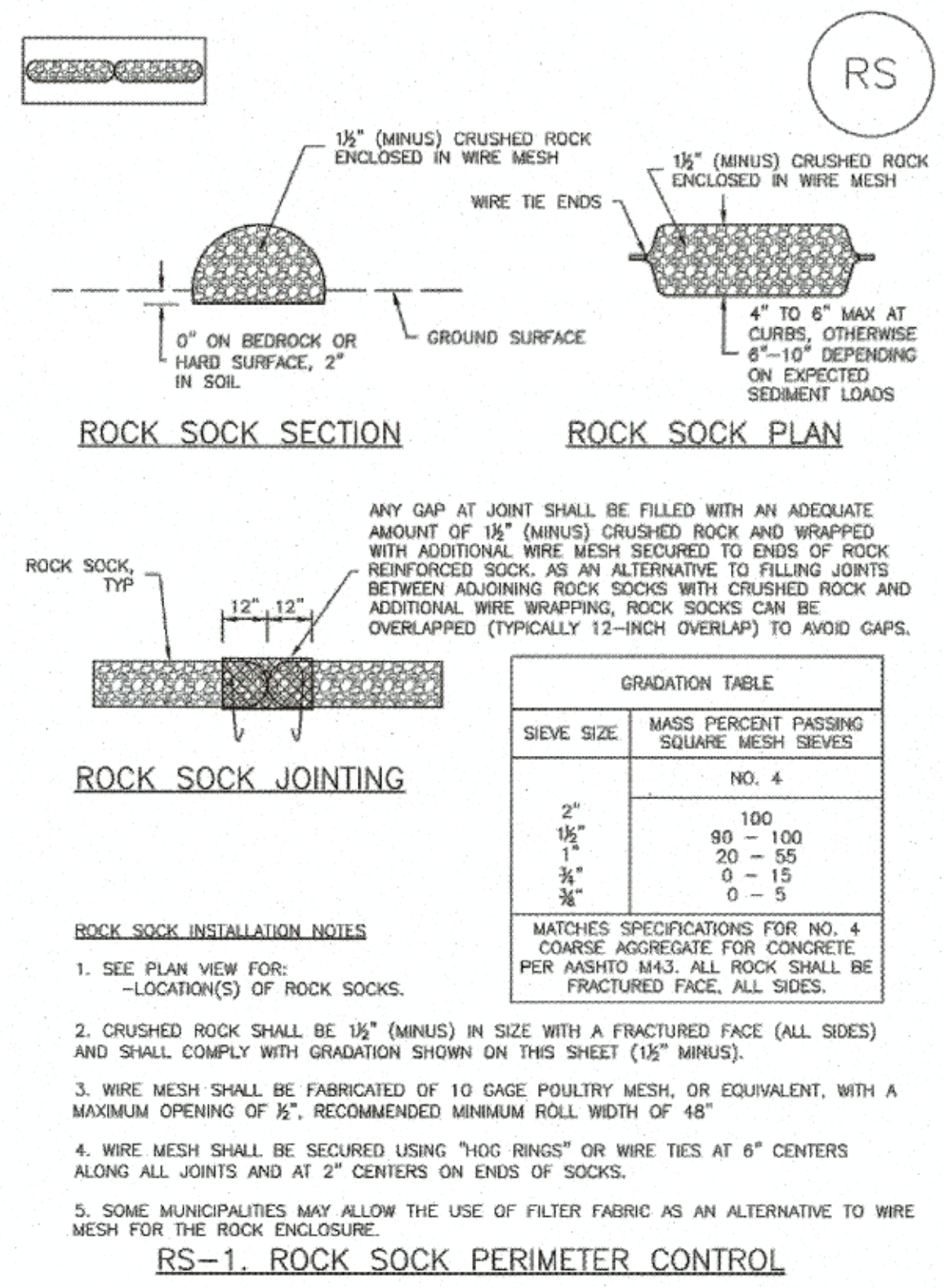
MM-1



November 2010 Urban Drainage and Flood Control District
Urban Storm Drainage Criteria Manual Volume 3 CWA-3

SC-5

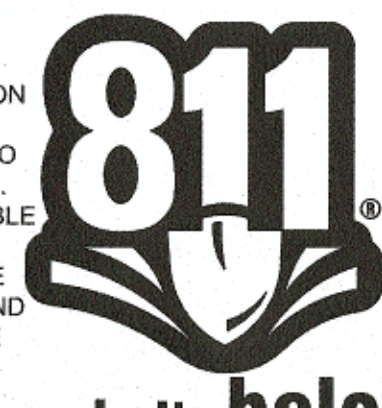
Rock Sock (RS)



RS-2 Urban Drainage and Flood Control District
Urban Storm Drainage Criteria Manual Volume 3 November 2010

NOTE: THIS SHEET HAS BEEN
ADDED TO THE PLAN SET.

CAUTION:
INFORMATION ON THIS DRAWING
CONCERNING TYPE AND LOCATION
OF UNDERGROUND AND OTHER
UTILITIES IS NOT GUARANTEED TO
BE ACCURATE OR ALL INCLUSIVE.
THE CONTRACTOR IS RESPONSIBLE
FOR MAKING HIS OWN
DETERMINATION AS TO THE TYPE
AND LOCATION OF UNDERGROUND
AND OTHER UTILITIES AS MAY BE
NECESSARY TO AVOID DAMAGE
THERE TO.



EL PASO COUNTY REFERENCE NUMBER: PPR-20-002



PREPARED UNDER THE SUPERVISION OF TAIT & ASSOCIATES, INC.
6163 East County Road 16
Loveland, CO 80537
P: 970/613/1447 F: 970/613/1897
www.tait.com
TAIT
Since 1964
Los Angeles Boise Sacramento
Denver Dallas Rancho Cucamonga

CRAIG A. SCHNEIDER, AIA
ARCHITECT
1736 East Sunshine, Suite 417
Springfield, Missouri 65804
e-mail: architect@cschneider.com
417-862-0558
Fax: 417-862-3265

PROJECT:
NEW O'REILLY AUTO PARTS STORE
N. MARKSHEFFEL ROAD
COLORADO SPRINGS, CO #11
BMP DETAILS

O'Reilly AUTO PARTS
CORPORATE OFFICES
233 SOUTH PATTERSON
SPRINGFIELD, MISSOURI 65802
(417) 862-2674 TELEPHONE

COMM # 4369
DATE: 02-26-2020
REVISION
DATE:

C1.4