

CRAIG A. SCHNEIDER, AIA
ARCHITECT
 1736 East Sunshine, Suite 417
 Springfield, Missouri 65804
 e-mail: architec@estletyschneider.com

PROJECT:
NEW O'REILLY AUTO PARTS STORE
N. MARKSHEFFEL ROAD
COLORADO SPRINGS, CO #11
EXTERIOR ELEVATIONS

O'Reilly AUTO PARTS
 CORPORATE OFFICES
 233 SOUTH PATTERSON
 SPRINGFIELD, MISSOURI 65802
 (417) 862-2674 TELEPHONE

| | |
|----------|----------|
| COMM # | 4369 |
| DATE: | 10-11-19 |
| REVISION | |
| DATE: | |

EXTERIOR FINISH SCHEDULE

EXTERIOR INSULATION AND FINISH SYSTEM (EIFS)
KEY NOTE NO. 1:
 MFG: DRYVIT SPECIFIED, EQUAL BY STO OR BASF (NO SUBSTITUTES)
 SERIES: OUTSULATION PLUS MD
 TEXTURE: SANDBLAST
 COLOR: DRYVIT "ORAP011030S" STRATOTONE HIGH PERFORMANCE
 COLOR STANDARD: SHERWIN WILLIAMS "POSITIVE RED" SW6871 (SHER-CRYL) GLOSS

UNIT MASONRY
KEY NOTE NO. 2A:
 TYPE: CONCRETE MASONRY UNIT (CMU)
 MFG: (REFER TO PROJECT MANUAL)
 SIZE: 8"X8"X16" (NOM.)
 TEXTURE: SMOOTH FACE
 COURSING: RUNNING BOND
 FINISH: FIELD PAINT (ACCENT COLOR)
 COLOR: SHERWIN WILLIAMS "SOFTER TAN" SW6141 (SEMI-GLOSS)
COATS:
 (1) COAT SW "PREPRITE" BLOCK FILLER B25W25 (NO LESS THAN 8 MILS) AND (2) COATS SW "CONFLEX XL" SMOOTH ELASTOMERIC A5-400 (NO LESS THAN 5.7 MILS EACH COAT)

COATS (COLD WEATHER APPLICATIONS):
 (1) COAT SW "LOXON BLOCK SURFACER" (NO LESS THAN 8 MILS) AND (2) COATS SW "ULTRACRETE" SOLVENT BORNE SMOOTH B46 (NO LESS THAN 8 MILS EACH COAT OR 16 MILS TOTAL)

KEY NOTE NO. 2B:
 TYPE: CONCRETE MASONRY UNIT (CMU)
 MFG: (REFER TO PROJECT MANUAL)
 SIZE: 8"X8"X16" (NOM.)
 TEXTURE: SPLIT FACE
 COURSING: RUNNING BOND
 FINISH: FIELD PAINT (FIELD COLOR)
 COLOR: SHERWIN WILLIAMS "LATTE" SW6108 (SEMI-GLOSS)
COATS:
 (1) COAT SW "PREPRITE" BLOCK FILLER B25W25 (NO LESS THAN 8 MILS) AND (2) COATS SW "CONFLEX XL" SMOOTH ELASTOMERIC A5-400 (NO LESS THAN 5.7 MILS EACH COAT)

COATS (COLD WEATHER APPLICATIONS):
 (1) COAT SW "LOXON BLOCK SURFACER" (NO LESS THAN 8 MILS) AND (2) COATS SW "ULTRACRETE" SOLVENT BORNE SMOOTH B46 (NO LESS THAN 8 MILS EACH COAT OR 16 MILS TOTAL)

FLASHING AND SHEET METAL
KEY NOTE NO. 3:
 TYPE: STANDING SEAM ROOFING SYSTEM
 MFG: (REFER TO PRE-ENGINEERED METAL BUILDING SHOP DRAWINGS)
 COLOR: GALVALUME

KEY NOTE NO. 4:
 TYPE: CAP FLASHING AT MASONRY
 MFG: (REFER TO PRE-ENGINEERED METAL BUILDING SHOP DRAWINGS)
 FINISH: PREFINISHED
 COLOR: EQUAL TO BUTLER BUILDING "COOL BIRCH WHITE"

KEY NOTE NO. 5:
 TYPE: CAP FLASHING AT EXTERIOR INSULATION FINISH SYSTEM (EIFS)
 MFG: (REFER TO PRE-ENGINEERED METAL BUILDING SHOP DRAWINGS)
 FINISH: FACTORY PRIMED AND FIELD PAINT
 COLOR: SHERWIN WILLIAMS "POSITIVE RED" SW6871 (SHER-CRYL) GLOSS WITH SHERWIN WILLIAMS "THREE COMPONENT (B65T105 / B65V105 / B65C105) CLEAR URETHANE

KEY NOTE NO. 18:
 TYPE: PEMB CONDUCTOR HEAD AND DOWNSPOUTS
 MFG: (OWNER FURNISHED / CONTRACTOR INSTALLED)
 FINISH: FACTORY PRIMED / FIELD PAINTED
 COLOR: SHERWIN WILLIAMS (MATCH ADJACENT MASONRY FIELD COLOR) (SEMI-GLOSS)

DOORS AND WINDOWS
KEY NOTE NO. 12:
 TYPE: STEEL DOORS AND FRAMES (DOORS NO. 2 AND 7)
 MFG: (OWNER FURNISHED / CONTRACTOR INSTALLED)
 FINISH: FACTORY PRIMED AND FIELD PAINTED
 COLOR: SHERWIN WILLIAMS (MATCH ADJACENT MASONRY COLOR) (SEMI-GLOSS)

KEY NOTE NO. 12:
 TYPE: STEEL DOORS AND FRAMES (DOORS NO. 3)
 MFG: (REFER PROJECT MANUAL)
 FINISH: FACTORY PRIMED AND FIELD PAINTED
 COLOR: SHERWIN WILLIAMS (MATCH ADJACENT MASONRY COLOR) (SEMI-GLOSS)

KEY NOTE NO. 13:
 TYPE: (REFER TO WINDOW SCHEDULE)
 MFG: EFCO, KAWNEER, OR OLD CASTLE (VISTA WALL), (NO SUBSTITUTES)
 COLOR: EFCO "IVY", KAWNEER "DARK IVY", VISTA WALL "INTERSTATE GREEN"

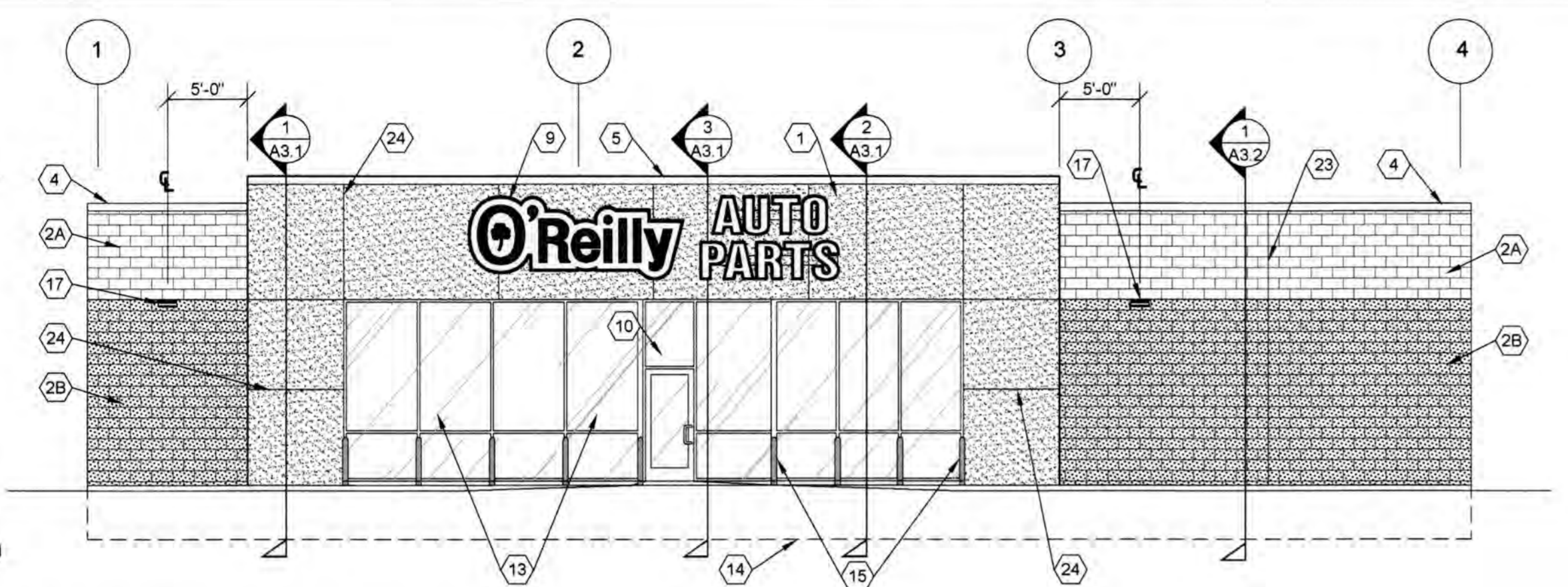
PAINTING
KEY NOTE NO. 15:
 TYPE: STEEL BOLLARDS (REFER TO CIVIL DRAWINGS)
 FINISH: FIELD PRIME AND PAINT
 COLOR: SHERWIN WILLIAMS "HUNT CLUB" SW6468 (SEMI-GLOSS)

GENERAL NOTES

- (A) REFER TO PROJECT MANUAL FOR ADDITIONAL REQUIREMENTS.
- (B) REFER TO CIVIL DRAWINGS FOR ADDITIONAL REQUIREMENTS.
- (C) REFER TO PLUMBING, MECHANICAL, AND ELECTRICAL DRAWINGS FOR SYSTEM TYPES AND ADDITIONAL REQUIREMENTS.
- (D) REFER TO EXTERIOR FINISH SCHEDULE FOR MATERIAL TYPES.
- (E) REFER TO PRE-ENGINEERED METAL BUILDING SHOP DRAWINGS FOR ADDITIONAL REQUIREMENTS.
- (F) REFER TO SCOPE OF WORK SCHEDULE FOR ADDITIONAL REQUIREMENTS.

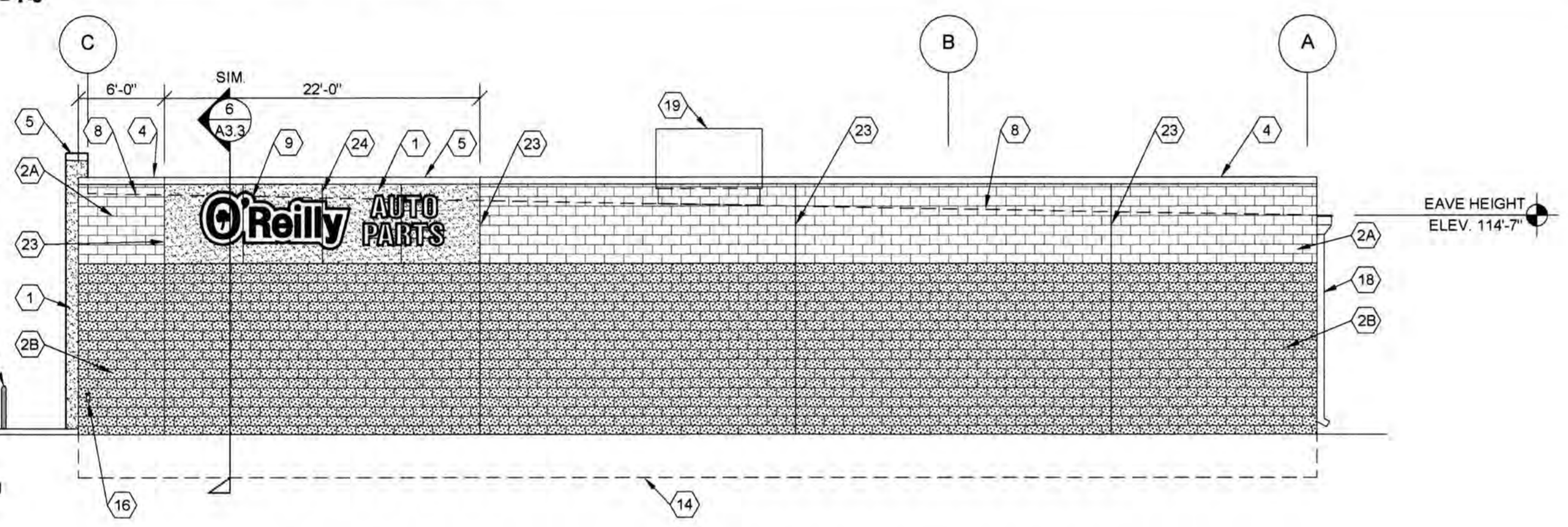
KEY NOTES

- (1) EXTERIOR INSULATION AND FINISH SYSTEM (EIFS).
- (2A) CONCRETE MASONRY UNIT (CMU) EXTERIOR WALL CONSTRUCTION (ACCENT COLOR). REFER TO PLANS, SECTIONS, AND DETAILS FOR ADDITIONAL REQUIREMENTS.
- (2B) CONCRETE MASONRY UNIT (CMU) EXTERIOR WALL CONSTRUCTION (FIELD COLOR). REFER TO PLANS, SECTIONS, AND DETAILS FOR ADDITIONAL REQUIREMENTS.
- (3) PRE-ENGINEERED METAL BUILDING SHEET METAL ROOFING SYSTEM (BEYOND).
- (4) PRE-ENGINEERED METAL BUILDING SHEET METAL FLASHING (AT MASONRY).
- (5) PRE-ENGINEERED METAL BUILDING SHEET METAL FLASHING (AT EIFS).
- (6) PRE-ENGINEERED METAL BUILDING SHEET METAL GUTTER (BEYOND) AND SCUPPER BY PEMB MANUFACTURER.
- (7) CONCRETE MASONRY UNIT (CMU), CORNER FINISHED JAMB UNIT.
- (8) LINE OF ROOF BEYOND WITH 1/4" 12" SLOPE MINIMUM.
- (9) SURFACE MOUNTED SIGN OWNER FURNISHED AND INSTALLED. PROVIDE BACKING FOR MOUNTING AND ROUGH-IN ELECTRICAL COORDINATE REQUIREMENTS WITH OWNER. REFER TO SHEET SG2.1.
- (10) BUILDING ADDRESS NUMBERS IN 6" HIGH HELVETICA WHITE VINYL ADHERED TO EXTERIOR FACE OF GLAZING.
- (11) OVERFLOW SCUPPER. REFER TO DETAIL 2/A3.3 FOR ADDITIONAL INFORMATION.
- (12) EXTERIOR DOOR AND FRAME SYSTEM. REFER TO FLOOR PLAN AND DOOR SCHEDULE FOR TYPES.
- (13) EXTERIOR WINDOW SYSTEM. REFER TO FLOOR PLAN AND WINDOW SCHEDULE FOR TYPES.
- (14) APPROXIMATE LINE OF FOUNDATION. REFER TO STRUCTURAL DRAWINGS.
- (15) STEEL BOLLARDS. REFER TO CIVIL AND STRUCTURAL DRAWINGS.
- (16) HOSE BIB. REFER TO PLUMBING DRAWINGS.
- (17) LIGHT FIXTURE. REFER TO ELECTRICAL DRAWINGS.
- (18) CONDUCTOR HEAD AND DOWNSPOUT (BY PEMB). REFER TO A3.3.
- (19) MECHANICAL ROOF TOP UNIT. REFER TO MECHANICAL DRAWINGS.
- (20) MECHANICAL WALL PENETRATIONS. REFER TO MECHANICAL DRAWINGS. PROVIDE FRAMING, FLASHING, AND SEALANT AS REQUIRED. INSTALL RESTROOM EXHAUST FANS 12" MINIMUM ABOVE INTERIOR CEILING FRAMING.
- (21) PLUMBING ROOF VENT. REFER TO PLUMBING DRAWINGS AND DETAIL 11/A4.2 (BEYOND).
- (22) ELECTRIC METER AND BOX. REFER TO ELECTRICAL PLANS.
- (23) MASONRY CONTROL JOINT. REFER TO STRUCTURAL DRAWINGS. PROVIDE SEALANT OVER 1/2" DIAMETER FOAM BACKER ROD.
- (24) RUSTICATION JOINT. REFER TO DETAIL 6/A3.2.



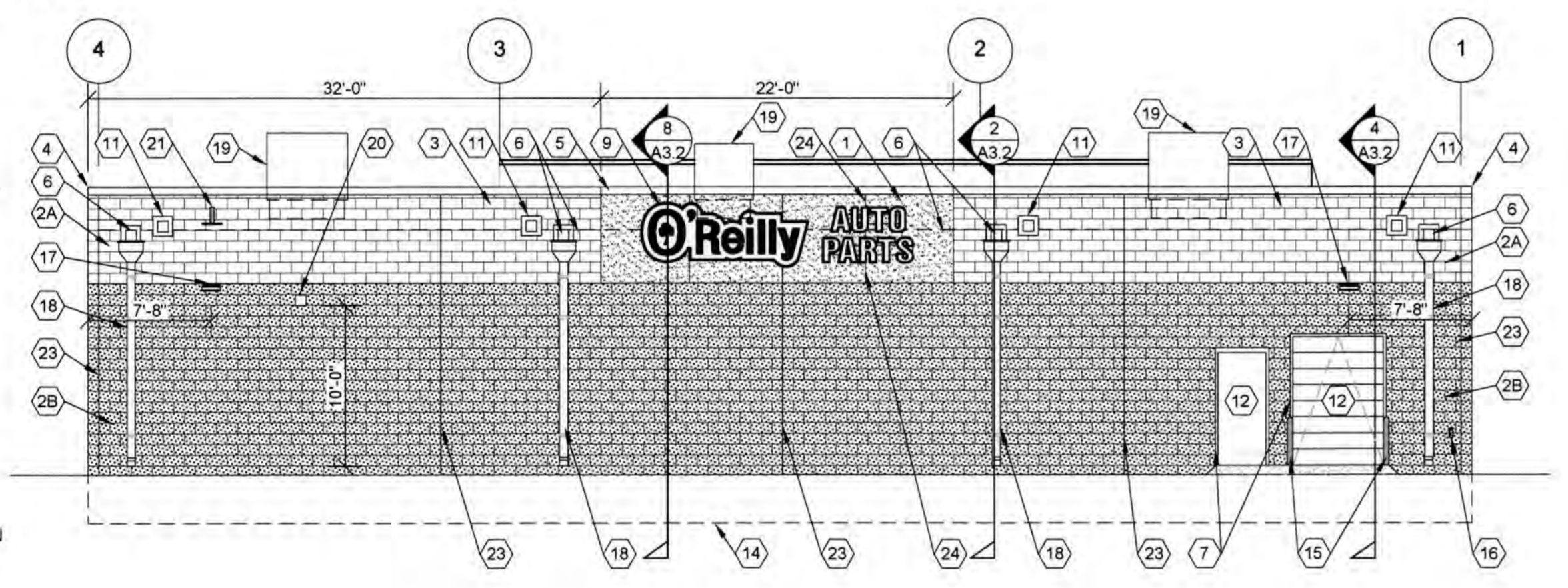
1 WEST EXTERIOR ELEVATION

A2.1 SCALE: 1/8" = 1'-0"



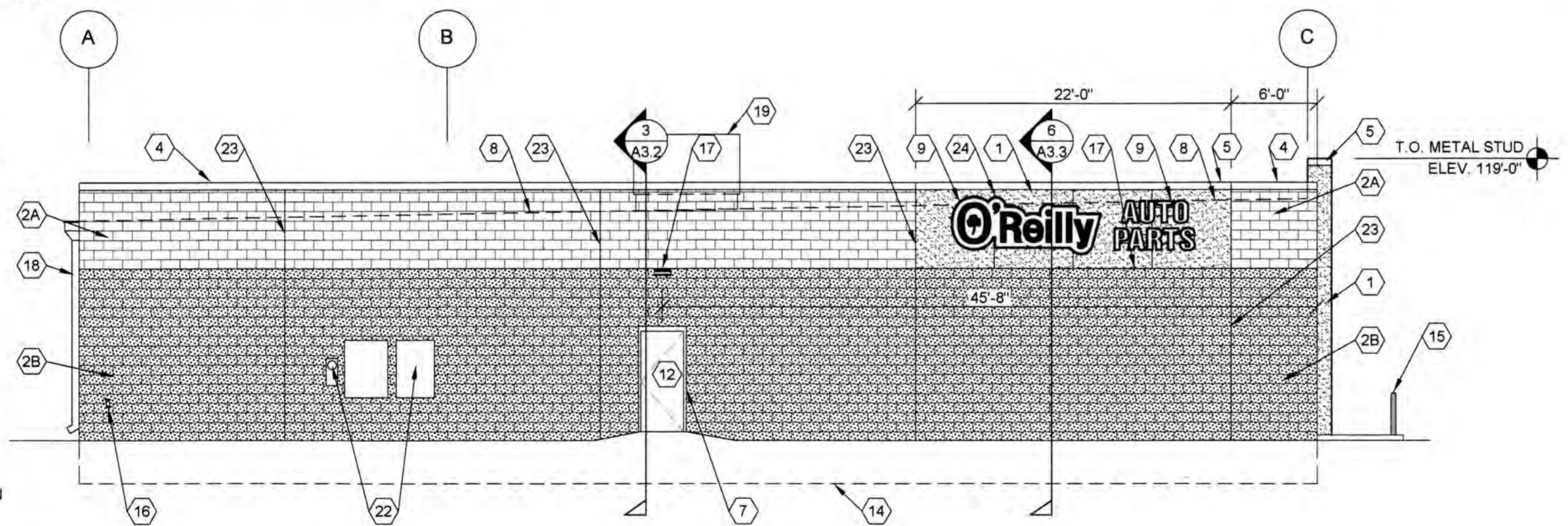
2 SOUTH EXTERIOR ELEVATION

A2.1 SCALE: 1/8" = 1'-0"



3 EAST EXTERIOR ELEVATION

A2.1 SCALE: 1/8" = 1'-0"



4 NORTH EXTERIOR ELEVATION

A2.1 SCALE: 1/8" = 1'-0"

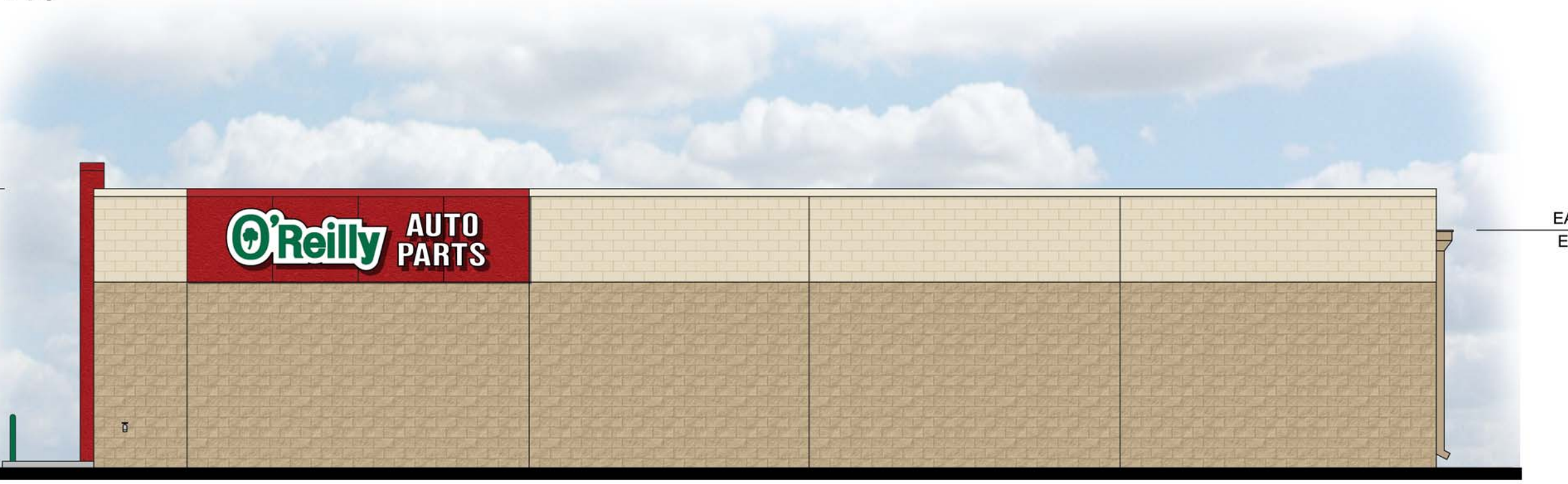
T.O. METAL STUD
ELEV. 119'-0"
T.O. MASONRY
ELEV. 117'-4"
TOP OF OPENING
ELEV. 111'-4"
FINISH FLOOR HEIGHT
ELEV. 100'-0"



1 WEST EXTERIOR ELEVATION

CE1 SCALE: 1/8" = 1'-0"

T.O. MASONRY
ELEV. 117'-4"
EAVE HEIGHT
ELEV. 114'-7"
FINISH FLOOR HEIGHT
ELEV. 100'-0"



EAVE HEIGHT
ELEV. 114'-7"

2 SOUTH EXTERIOR ELEVATION

CE1 SCALE: 1/8" = 1'-0"

T.O. MASONRY
ELEV. 117'-4"
EAVE HEIGHT
ELEV. 114'-7"
FINISH FLOOR HEIGHT
ELEV. 100'-0"



3 EAST EXTERIOR ELEVATION

CE1 SCALE: 1/8" = 1'-0"

T.O. METAL STUD
ELEV. 119'-0"
T.O. MASONRY
ELEV. 117'-4"
FINISH FLOOR HEIGHT
ELEV. 100'-0"







T.O. METAL STUD
ELEV. 119'-0"

4 NORTH EXTERIOR ELEVATION

CE1 SCALE: 1/8" = 1'-0"

FINISH LEGEND:

| | | |
|---|--------------------|---|
|  | FIELD BLOCK - | PAINTED SPLIT FACE C.M.U. COLOR: SHERWIN WILLIAMS "LATTE" SW6108 |
|  | ACCENT BLOCK - | PAINTED SMOOTH FACE C.M.U. COLOR: SHERWIN WILLIAMS "SOFTER TAN" SW6141 |
|  | EIFS AROUND SIGN - | CUSTOM RED MIX BY DRYVIT ORAP011030S SHERWIN WILLIAMS "POSITIVE RED" SW6871 |
|  | STOREFRONT - | KAWNEER "DARK IVY" |



CRAIG A. SCHNEIDER, AIA
ARCHITECT

1736 East Sunshine, Suite 417
Springfield, Missouri 65804
417.862.0558
Fax: 417.862.3265
e-mail: architect@estesyschneider.com

PROJECT:
NEW O'REILLY AUTO PARTS STORE
N. MARKSHEFFEL ROAD
COLORADO SPRINGS, CO #11

COLOR ELEVATIONS

O'Reilly AUTO PARTS
CORPORATE OFFICES
233 SOUTH PATTERSON
SPRINGFIELD, MISSOURI 65802
(417) 862-2674 TELEPHONE

| | |
|----------|---------|
| COMM # | |
| DATE: | 8-27-19 |
| REVISION | |
| DATE: | |

NOT FOR CONSTRUCTION

CE1